

City of Puyallup
Development & Permitting Services
ISSUED PERMIT

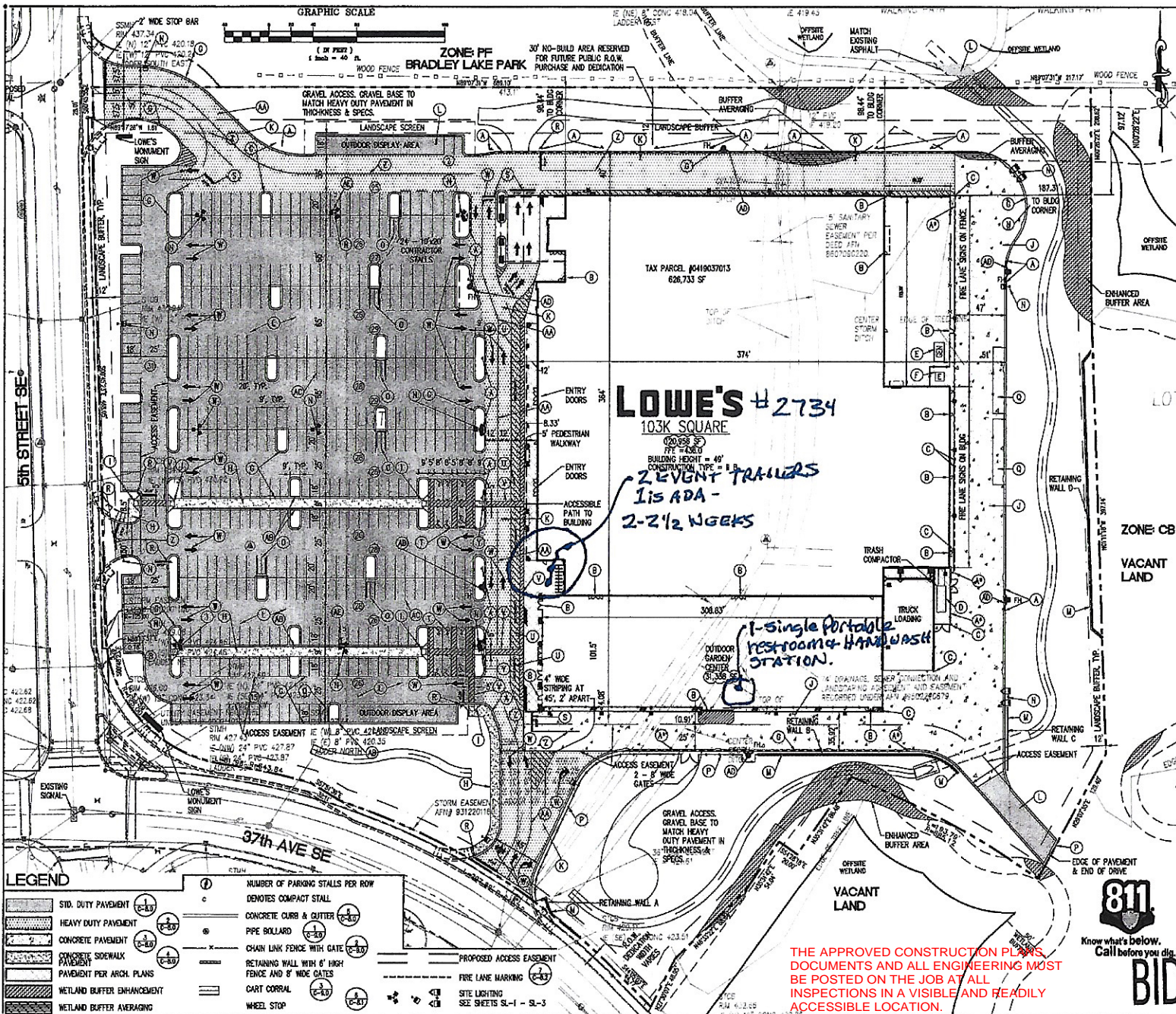
Building	Planning
Engineering	Public Works
Fire	Traffic

City of Puyallup
Building
ACCEPTED

J.Montgomery
12/15/2022
3:47:34 PM



REVISIONS	DATE	DESCRIPTION
1	12/15/2022	ISSUED PERMIT



- SITE KEY**
- (A) PER PUYALLUP CODE 16.04.015, SECTION 2 (B) AND MODIFIED AS APPROVED BY THE FIRE MARSHALL: FIRE LANES SHALL BE IDENTIFIED BY A 4" WIDE LINE AND BLOCK LETTERS 2 FEET HIGH, PAINTED IN THE LAKE, AT 50' OR SUCH INTERVALS THROUGH THE MARSHALL DETERMINED TO BE REASONABLE, STATING "EMERGENCY VEHICLES ONLY", COLOR TO BE BRIGHT YELLOW, AND BY POSTING OF SIGNS STATING "EMERGENCY VEHICLES ONLY - NO PARKING - VIOLATOR VEHICLES SUBJECT TO IMPOUND". SIGNS SHALL BE 12" X 18" AND SHALL HAVE LETTERS AND BACKGROUNDS OF CONTRASTING COLORS, READILY READABLE FROM AT LEAST A 50 FOOT DISTANCE. SIGNS SHALL BE POSTED AT EACH ROW ACROSS FROM THE FIRE LANE AT A HEIGHT OF 4' TO BOTTOM OF SIGN.
 - (AM) FIRE LANE SIGNS IN THIS AREA SHALL BE MOUNTED ON FENCE AT 4' FROM TOP OF PAVEMENT TO BOTTOM OF SIGN
 - (B) DOT PORCH. SEE ARCHITECTURAL PLANS FOR EXACT SIZE, LOCATION FOR STOPS, STAIRS AND/OR RAMPS THAT MAY BE REQUIRED. RAMP PAVEMENT FLUSH WITH THE TOP OF STOP.
 - (C-01) 6" PIPE BOLLARD TYP. SEE ARCH. PLANS
 - (C-02) PAD MOUNTED COMPACTOR. REFER TO ARCHITECTURAL PLAN FOR EXACT LOCATION AND SIZE.
 - (C-03) GENERATOR. SEE ARCH PLANS FOR EXACT LOCATION
 - (C-04) CONCRETE TRANSFORMER PAD. CONTRACTOR TO COORDINATE WITH LOCAL POWER COMPANY FOR DETAILS. SEE ELECTRICAL PLANS.
 - (C-05) 24" CONCRETE CURB AND GUTTER TYPICAL
 - (C-06) CONCRETE SIDEWALK
 - (C-07) CURB RAMP DETAIL
 - (C-08) HEAVY DUTY CONCRETE PAVEMENT
 - (C-09) HEAVY DUTY ASPHALT PAVEMENT
 - (C-10) STANDARD DUTY ASPHALT PAVEMENT
 - (C-11) RETAINING WALL WITH 6" HIGH FENCE & DOUBLE 8" WIDE GATES. SEE STRUCTURAL
 - (C-12) LIGHT POLE BASE (TYP.). REFER TO SITE LIGHTING PLAN. SEE SHEETS SL-1 - SL-3
 - (C-13) CART CORRAL, TYPICAL, PROVIDED & INSTALLED BY LOWE'S.
 - (C-14) 6" HIGH CHAIN LINK FENCING
 - (C-15) 60"x12" LOADING SPACES FOR USED APPLIANCES AND PALLET TRAILERS
 - (C-16) *STOP* SIGN 12" STOP BAR (TYP.)
 - (C-17) ON SITE STOP BAR
 - (C-18) ACCESSIBLE PARKING SPACE TYPICAL. SEE DETAIL SHEET FOR ACCESSIBLE PARKING SPACE SIZE, SIGN AND SYMBOL. (*VAN* INDICATES VAN ACCESSIBLE SPACE)
 - (C-19) LOADING ZONE PAINTED "LOADING ZONE" AT 100' O.C., 24" HIGH, STRIPPED 4" WIDE STRIPES AT 45', 2' APART. PAINTED PEDESTRIAN CROSSWALK OR PATHWAY
 - (C-20) PAINTED DIRECTIONAL ARROW TYPICAL
 - (C-21) DETECTABLE WARNING PER ICC/ANSI A 117.1-2003, SECTIONS 406.13 & 705
 - (C-22) SINGLE YELLOW SOLID LINE 4" PAINTED STRIPING
 - (C-23) SINGLE WHITE SOLID LINE 4" PAINTED STRIPING
 - (C-24) LANDSCAPE ISLAND CURB SCOURPER
 - (C-25) PARKING LOT STRIPING
 - (C-26) FIRE HYDRANT, SEE SHEET C-3.5
 - (C-27) WHEEL STOP

LEGEND

(1) NUMBER OF PARKING STALLS PER ROW	(C) DENOTES COMPACT STALL
(C-13) STD. DUTY PAVEMENT	(C-01) CONCRETE CURB & GUTTER
(C-08) HEAVY DUTY PAVEMENT	(C-13) PIPE BOLLARD
(C-04) CONCRETE PAVEMENT	(C-14) CHAIN LINK FENCE WITH GATE
(C-02) CONCRETE SIDEWALK PAVEMENT PER ARCH. PLANS	(C-11) RETAINING WALL WITH 6" HIGH FENCE AND 8" WIDE GATES
(C-05) WETLAND BUFFER ENHANCEMENT	(C-12) CART CORRAL
(C-06) WETLAND BUFFER AVERAGING	(C-17) WHEEL STOP
(C-24) PROPOSED ACCESS EASEMENT	(C-27) FIRE LANE MARKING
(C-21) SITE LIGHTING SEE SHEETS SL-1 - SL-3	

APPROVED

BY: CITY OF PUYALLUP
ENGINEERING SERVICES

DATE: _____

NOTE: THIS APPROVAL IS VOID AFTER 1 YEAR FROM APPROVAL DATE.

THE CITY WILL NOT BE RESPONSIBLE FOR ERRORS AND/OR OMISSIONS ON THESE PLANS.

FLOOD CONDITIONS MAY EXIST. CHANGES TO THESE PLANS AS DETERMINED BY THE CITY ENGINEER.

BID SET

811
Know what's below.
Call before you dig.

PROJECT NO. 0000000
DRAWING NUMBER: C-1.0
SHEET 8 OF 80

THE APPROVED CONSTRUCTION PLANS, DOCUMENTS AND ALL ENGINEERING MUST BE POSTED ON THE JOB AT ALL INSPECTIONS IN A VISIBLE AND READILY ACCESSIBLE LOCATION.

FULL SIZED LEDGIBLE COLOR PLANS ARE REQUIRED TO BE PROVIDED BY THE PERMITEE ON SITE FOR INSPECTION



PACLAND

1830 PARADISE AVE., SUITE 140
CARLSBAD, CA 92008
TEL: (760) 432-5071
FAX: (760) 432-6144
www.pacland.com

LOWE'S H.W. INC.

1830 PARADISE AVE., SUITE 140
CARLSBAD, CA 92008
TEL: (760) 432-5071
FAX: (760) 432-6144
www.lowes.com

LOWE'S

1830 PARADISE AVE., SUITE 140
CARLSBAD, CA 92008
TEL: (760) 432-5071
FAX: (760) 432-6144
www.lowes.com

SITE PLAN

PUYALLUP, WASHINGTON

PROJECT NO. 0000000
DRAWING NUMBER: C-1.0
SHEET 8 OF 80