

2

SITE PLAN - FOR REFERENCE



https://raymondwest.com
SEATTLE, WA
6607 287TH ST.
AUBURN, WA 98001
PHONE: 1.888.820.8811

REV. NO.	DESCRIPTION	REV. DATE	REV. BY
1	INITIAL RELEASE	09/14/2022	JON TOSKI
2	CITY CORRECTIONS MADE	11/10/2022	JON TOSKI

CUSTOMER:
RED DOT CORPORATION
2504 EAST MAIN
PUYALLUP, WA 98372

SHEET NAME:
SITE PLAN

STRUCTURAL STAMP

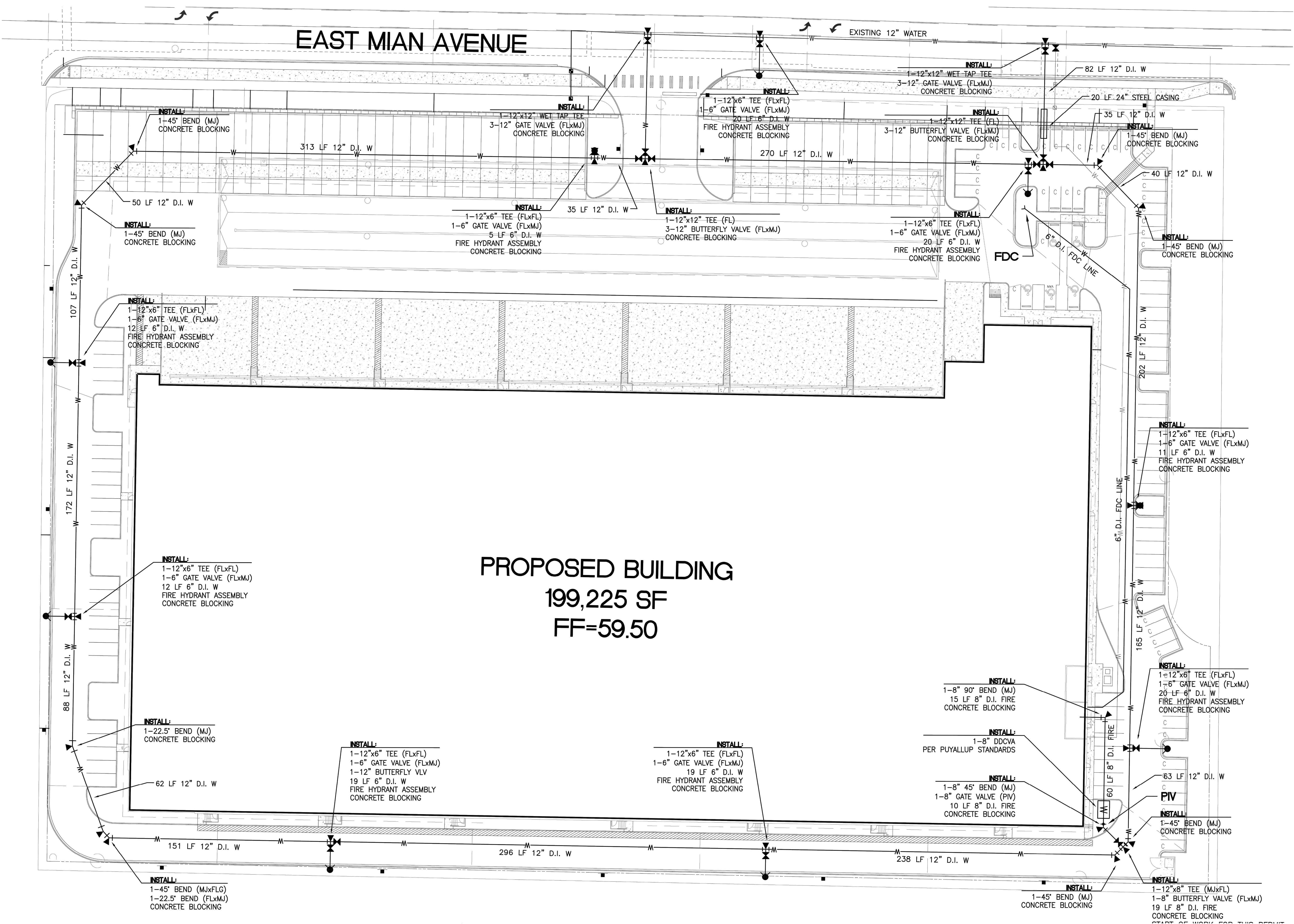
All dimensions are to be field verified by the customer. Raymond West assumes no responsibility for incorrect dimensions, location of lights or other equipment outside of Raymond West's scope of work.

This drawing is the property of Raymond West and is only to be used only by the party described in the Customer Order and may only be reproduced with the permission of Raymond West. Copying in part or as a whole is prohibited. This is subject to a Confidentiality Agreement between Raymond West and the party described under "Customer".

DATE: 11/10/2022
SCALE: NTS
DRAWN BY: J.TOSTANOSKI
PROJECT #: 100713607

SHEET NUMBER: **SS2** REV: **1**

A
B
C
D
E
F
G
H



PROPOSED BUILDING
199,225 SF
FF=59.50

HIGH-PILED STORAGE COMMODITY DESCRIPTION FOR RED DOT CORPORATION:

RED DOT CORPORATION IS GOING TO OCCUPY THE BUILDING LOCATED AT 495 ANDOVER PARK E. PRODUCTS TO BE STORED ARE THE FOLLOWING: MOBILE HVAC UNITS AND COMPONENTS. ALL PRODUCTS ARE CLASS I COMMODITIES, PACKAGED IN CORRUGATED CARTONS, EXPANDED AND UNEXPANDED, PLACED ON WOODEN PALLET. THE COMMODITIES WILL BE PLACED IN THE PROPOSED SELECTIVE RACKING, AND CANTILEVER RACKING ON OPEN WIRE MESH DECKING HAVING UNIFORM OPENINGS NOT MORE THAN 6 INCHES APART, COMPRISING NOT LESS THAN 50 PERCENT OF THE OVERALL SHELF AREA AND WITH APPROVED FLUE SPACES, OR DIRECTLY ON THE LOAD BEAMS. OPEN TOP CONTAINERS AND SOLID SHELVING WILL NOT BE PRESENT. EXPOSED AND CARTONED GROUP A PLASTIC ARE LOCATED THROUGHOUT. CARTONED EXPANDED GROUP A PLASTIC, IN LIMITED AMOUNTS, THE LOCATION WILL BE IDENTIFIED IN THE FINAL REPORT. THE CANTILEVER (TYPE-C) RACK WILL STORE CLASS I COMMODITY.

REQUIRED INFORMATION FOR CITY BUILDING AND FIRE SAFETY PER 2018 IFC AND 2016 NFPA-13

- DIMENSION OF RACKING AREA IS APPROXIMATELY: 21,500 SQ. FT.
- SQUARE FOOTAGE OF THE WAREHOUSE IS APPROXIMATELY 188,000 SQ. FT.
- THE WAREHOUSE CEILING HEIGHT IS 38'. MAXIMUM STORAGE HEIGHT OF COMMODITY WITHIN RACKS WILL NOT EXCEED 30'. TOP OF STORAGE WILL BE MAINTAINED A MINIMUM OF 36" BELOW FIRE SPRINKLER DEFLECTORS.
- THE NUMBER OF TIERS WITHIN RACK ASSEMBLES IS VARIED SEE RACK DETAILS.
- PRODUCTS WILL BE STORED ON WOODEN PALLET, SLATS (MAINTAINING >50%OPEN) OR ON OPEN WIRE MESH DECKING WITHIN PALLET STORAGE RACKS.
- aisle DIMENSIONS BETWEEN STORAGE ARRAYS EQUAL OR EXCEED 10' OR 120" (SEE PLAN)
- MAXIMUM PILE VOLUME FOR THE LARGEST ARRAY IS N/A, NO ON FLOOR STORAGE.
- HIGH PILED STORAGE WILL BE PRESENT IN PALLET RACKS
- NO COMMODITIES WITHIN FACILITY ARE BANNED.
- FIRE ACCESS DOORS ARE REQUIRED AND ARE SPACED SUCH THAT AN ACCESS DOOR IS LOCATED WITHIN 125'-0" LINEAL FEET FROM ALL POINTS OF EXTERIOR WALLS THAT ADJOIN FIRE ACCESS ROADWAYS.
- AN ESFR FIRE SPRINKLER SYSTEM PROTECTS THIS OCCUPANCY.THE SYSTEM IS DESIGNED USING RELIABLE K-16.8, 212 DEGREE ESFR PENDENT SPRINKLER. ESFR SPRINKLER DISCHARGE AT 55 PSI. PER THE 2016 EDITION OF NFPA 13, TABLE 17.3.3.1, K-16.8 ESFR SPRINKLERS DISCHARGING AT 55 PSI, BELOW A 40'-0" HIGH ROOF, ARE ADEQUATE TOO PROTECT THE STATED STORAGE EXPECT AS NOTED.
- NOTE- AREA OF RACKING STORING CARTONED EXPANDED GROUP A PLASTICS COMMODITIES TO BE ADDRESSED IN THE FINAL REPORT
- SMOKE AND HEAT VENTS ARE NOT REQUIRED PER THE 2018 IFC- TABLE 3206.2

2018 IFC-TABLE 3206.2 -GENERAL FIRE PROTECTION AND LIFE SAFETY REQUIREMENTS

- CLASS COMMODITY - GROUP A PLASTICS
- SIZE OF HIGH-PILED STORAGE AREA*- 21,500
- AUTOMATIC FIRE EXTINGUISHING SYSTEM- YES
- FIRE DETECTION SYSTEM- NOT REQUIRED
- BUILDING ACCESS- YES
- SMOKE AND HEAT REMOVAL- YES- J (NOT REQUIRED WHEN STORAGE AREAS WITH AN EXIT ACCESS TRAVEL DISTANCE OF 250 FEET OR LESS ARE PROTECTED BY EARLY SUPPRESSION FAST RESPONSE(ESFR) SPRINKLER SYSTEMS INSTALLED IN ACCORDANCE WITH SECTION 903.3.1.1.
- DRAFT CURTAINS- NOT REQUIRED
- SOLID-PILED STORAGE, SHELF STORAGE AND PALLETIZED STORAGE- YES SEE FINAL REPORT

REV. NO.	DESCRIPTION	REV. DATE	REV. BY
1	INITIAL RELEASE	09/14/2022	JON TOSKI
2	CITY CORRECTIONS MADE	11/10/2022	JON TOSKI

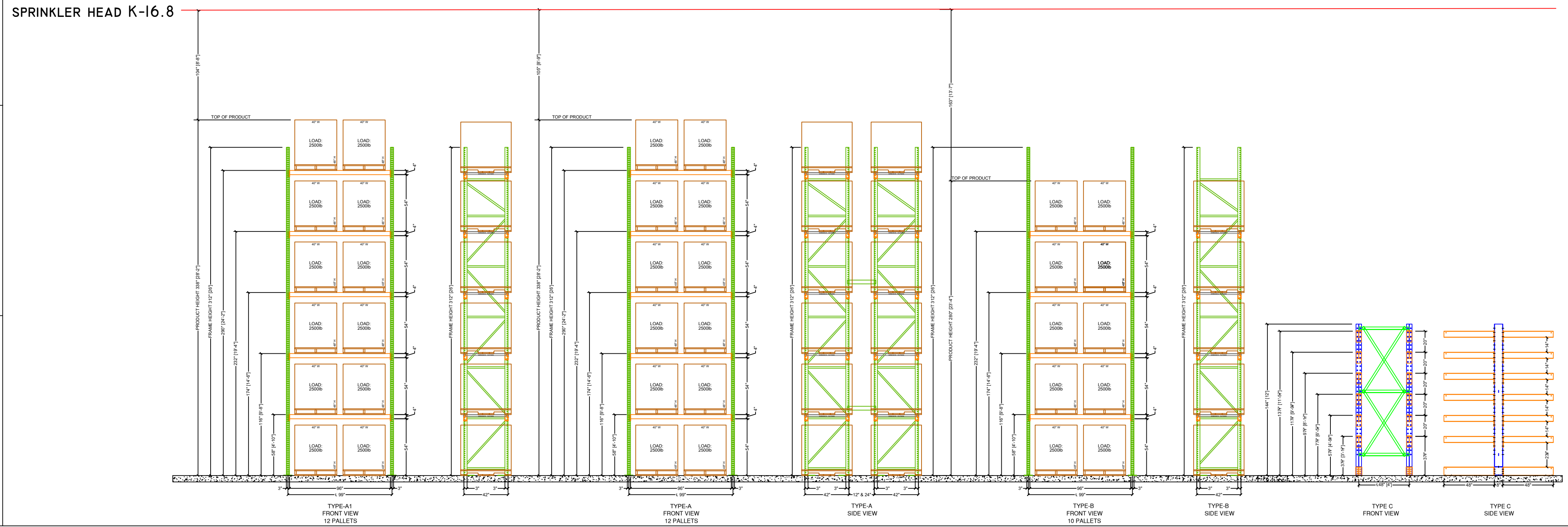
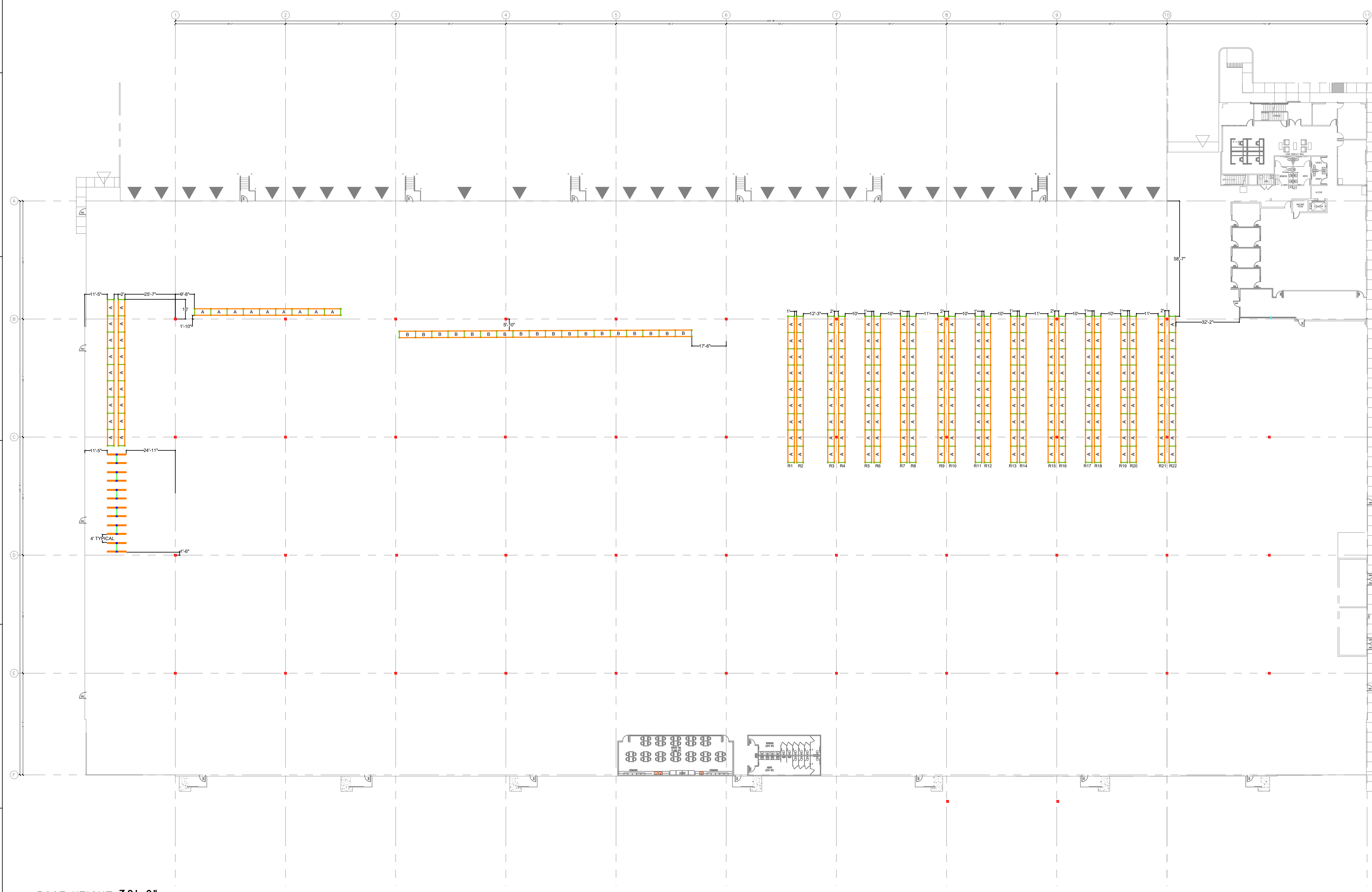
CUSTOMER:
RED DOT CORPORATION
2504 EAST MAIN
PUYALLUP, WA 98372

SHEET NAME:
FLOOR PLAN

STRUCTURAL STAMP

All dimensions are to be field verified by the customer. Raymond West assumes no responsibility for incorrect dimensions, location of lights or other equipment outside of Raymond West's scope of work.
This drawing is the property of Raymond West and is only to be used only by the party described in the Customer section and has only an association with the firm. It is not to be used for any other services or systems. Copying in part or as a whole is prohibited. This is subject to a Confidentiality Agreement between Raymond West and the party described under "Customer".

DATE: 11/10/2022
SCALE: 1/32" = 1'-0"
DRAWN BY: J.TOSTANOSKI
PROJECT #: 100713607
SHEET NUMBER: SS3
REV: 1



RAYMOND WEST INTRALOGISTICS SOLUTIONS

5 SPRINKLER PLANS 1 - FOR REFERENCE ONLY

Scale: NTS

REV. NO.	DESCRIPTION	REV. DATE	REV. BY
1	INITIAL RELEASE	09/14/2022	JON TOSKI
2	CITY CORRECTIONS MADE	11/10/2022	JON TOSKI

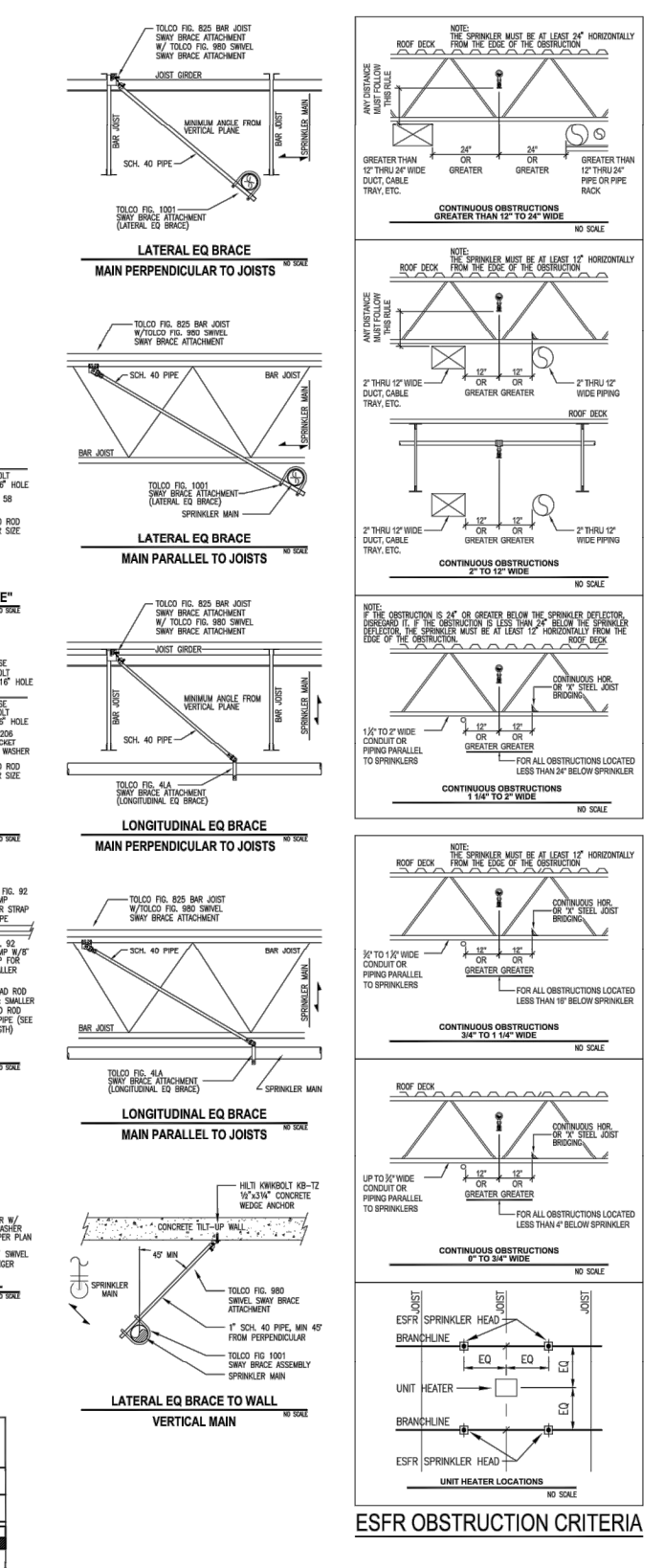
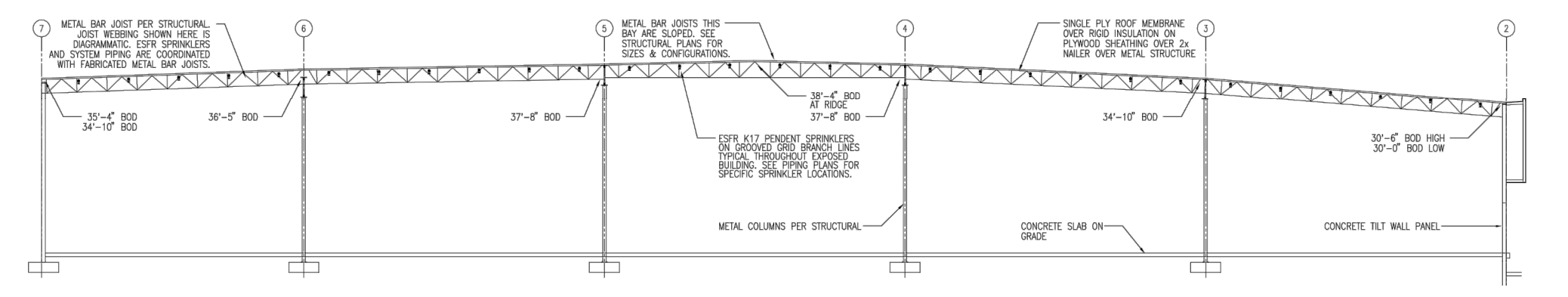
CUSTOMER: **RED DOT CORPORATION**
2504 EAST MAIN
PUYALLUP, WA 98372

SHEET NAME:
SPRINKLER PLANS 1

STRUCTURAL STAMP

All dimensions are to be field verified by the contractor. Raymond West assumes no responsibility for incorrect dimensions, location of lights or other equipment outside of approved sheet's scope of work.
This drawing is the property of Raymond West and is to be used only by the party described in the Customer section and shall only be reproduced with services of systems. Copying in part or as a whole is prohibited. This is subject to a Confidentiality Agreement between Raymond West and the party described under "Customer".

DATE: 11/10/2022
SCALE: NTS
DRAWN BY: J.TOSTANOSKI
PROJECT #: 100713607
SHEET NUMBER: **SS5**
REV: **1**



GENERAL NOTES:

- 16.6K ESFR SPRINKLERS SHALL BE INSTALLED PER NFPA 13 SECTION 8.1.2.1.1. 16.6K ESFR SPRINKLERS SHALL BE INSTALLED SO THE DEFLECTORS ARE NOT MORE THAN 1" AND NOT LESS THAN 1/2" BELOW THE CEILING PER NFPA 13 SECTION 8.1.2.1.2.
- LATERAL BRACING IS NOT REQUIRED ON 2 1/2" & 3" BRANCH LINES WHEN INSTALLED PER NFPA 13 SECTION 8.1.2.1.10.
- ALL 2 1/2" AND 3" BRANCH LINES ARE TO BE INSTALLED PER SECTION 8.1.2.1.10. LATERAL BRACING IS NOT REQUIRED. HANGERS ARE TO BE LETS THAN 6" WHEN MEASURED BETWEEN TOP OF PIPE AND POINT OF ATTACHMENT TO BUILDING STRUCTURE.
- HALLS (HIGH VELOCITY LOW SPEED) FANS SHALL BE CENTERED BETWEEN A ESFR SPRINKLERS AND LOCATED SO THAT THE TOP OF THE FAN BLADES ARE LOCATED A MINIMUM OF 50% BELOW THE SPRINKLER DEFLECTORS. HALL FANS SHALL BE WELDED TO CEILING UPON ACTIVATION OF SPRINKLER SYSTEM W/DEFLECTOR FLOW SWITCHES.

DESIGN CRITERIA:

ACTUAL STORAGE HEIGHTS 30' - 36' MUST BE MAINTAINED BETWEEN TOP OF STORAGE AND ESFR SPRINKLER DEFLECTORS.

1. STORAGE AREAS - ROOF HEIGHTS 40 FT & LESS
SECTION STANDARD IS WITH 13% ISOMETRIC'S 4-17 ESFR PENDENT SPRINKLER HEAD WITH A MINIMUM FLOW PRESSURE OF 20 PSI WITH A MINIMUM 40' HIGH ROOF. THIS DESIGN ALLOWS FOR STORAGE OF THE FOLLOWING COMMODITIES:
PALETTIZED AND SOLID PILED STORAGE PER TABLES 14.4.1 & 15.4.1 (NO OPEN TOP CONTAINERS)
A. GLASS 1-HY ENCAPSULATED COMMODITIES
MAXIMUM STORAGE HEIGHT = 35'-0"
B. CARTONED NONPAVED PLASTICS
MAXIMUM STORAGE HEIGHT = 35'-0"
C. EXPDED NONPAVED PLASTICS
MAXIMUM STORAGE HEIGHT = 35'-0"
2. RACK STORAGE PER TABLES 14.3.3.1 & 17.3.3.1 (NO OPEN TOP CONTAINERS)
A. GLASS 1-HY ENCAPSULATED OR NONENCAPSULATED COMMODITIES
MAXIMUM STORAGE HEIGHT = 35'-0"
B. CARTONED NONPAVED PLASTICS
MAXIMUM STORAGE HEIGHT = 35'-0"
C. EXPDED NONPAVED PLASTICS
MAXIMUM STORAGE HEIGHT = 35'-0"
3. RILE BUILT STORAGE PER TABLES 12.12.2.2.1 & 12.12.2.2.3
A. WOOD OR PLASTIC PALLETS STORED ON FLOOR OR RACKING WITHOUT TOP SHELVING
MAXIMUM STORAGE HEIGHT = 35'-0"
B. FIRE RISER & ELEC. ROOMS
CORRIDOR HAZARD OCCUPANCY
C. OFFICE SPACES
LIGHT HAZARD OCCUPANCY

SEISMIC BRACING LEGEND

BRACE NUMBER	SIZE OF BRACE	TYPE OF BRACE	ATTACHMENT	ATTACHMENT	MINIMUM BRACE SPACING
SB-1	2" SCH40	1" x 2" x 1/4"	FG 1001	FG 1001	42' 20'-0"
SB-2	2" SCH40	1" x 2" x 1/4"	FG 1001	FG 1001	42' 20'-0"
SB-3	2" SCH40	1" x 2" x 1/4"	FG 1001	FG 1001	42' 20'-0"
SB-4	2" SCH40	1" x 2" x 1/4"	FG 1001	FG 1001	42' 20'-0"
SB-5	2" SCH40	1" x 2" x 1/4"	FG 1001	FG 1001	42' 20'-0"
SB-6	2" SCH40	1" x 2" x 1/4"	FG 1001	FG 1001	42' 20'-0"
SB-7	2" SCH40	1" x 2" x 1/4"	FG 1001	FG 1001	42' 20'-0"
SB-8	2" SCH40	1" x 2" x 1/4"	FG 1001	FG 1001	42' 20'-0"
SB-9	2" SCH40	1" x 2" x 1/4"	FG 1001	FG 1001	42' 20'-0"
SB-10	2" SCH40	1" x 2" x 1/4"	FG 1001	FG 1001	42' 20'-0"
SB-11	2" SCH40	1" x 2" x 1/4"	FG 1001	FG 1001	42' 20'-0"
SB-12	2" SCH40	1" x 2" x 1/4"	FG 1001	FG 1001	42' 20'-0"
SB-13	2" SCH40	1" x 2" x 1/4"	FG 1001	FG 1001	42' 20'-0"
SB-14	2" SCH40	1" x 2" x 1/4"	FG 1001	FG 1001	42' 20'-0"
SB-15	2" SCH40	1" x 2" x 1/4"	FG 1001	FG 1001	42' 20'-0"
SB-16	2" SCH40	1" x 2" x 1/4"	FG 1001	FG 1001	42' 20'-0"
SB-17	2" SCH40	1" x 2" x 1/4"	FG 1001	FG 1001	42' 20'-0"

NOTE: THIS IS AN EARLY SUPPRESSION FAST RESPONSE SPRINKLER SYSTEM BRANCH LINE & SPRINKLER HEAD LOCATION ARE CRITICAL. ESFR SYSTEMS REQUIRE SPECIAL CONCENTRATION REGARDING PLACEMENT OF LIGHTING, DUCT WORK, PROCESS PIPING, ELECTRICAL CONDUIT RACE, ETC. SPRINKLER PIPING CAN NOT BE ROUTED AROUND OBSTRUCTIONS DUE TO INCREASED FRICTION LOSSES OR LIFTED FROM ROOF STRUCTURE DUE TO CODE REQUIREMENTS. IF IT IS DETERMINED THAT REQUIRED COORDINATION WITH THE ROOF STRUCTURE, JOIST FRAME, POINT, JOIST BRACING, DUCT WORK, LIGHTING, ELECTRICAL CONDUIT AND OTHER PIPING WILL BE ACCOMMODATED TO PROVIDE THE CLEARANCE REQUIRED FOR AN ESFR SYSTEM.

KEY PLAN

SYSTEM #	SHEET
SYSTEM #1	SHEET FP-3
SYSTEM #2	SHEET FP-4
SYSTEM #3	SHEET FP-5
SYSTEM #4	SHEET FP-6
SYSTEM #5	SHEET FP-7

AS-BUILT

CONSTRUCTION
PUYALLUP LOGISTICS CENTER
199,225 SF
FF-59.50

DATE: 11/10/2022
SCALE: NTS
DRAWN BY: J.TOSTANOSKI
PROJECT #: 100713607
SHEET NUMBER: **FP-2**

UNDERGROUND PIPE NOTES

1. THIS SITE PLAN IS FOR REFERENCE ONLY.
2. SEE ARCHITECTURAL AND CIVIL DRAWINGS FOR ADDITIONAL SITE PLAN INFORMATION.
3. ALL UNDERGROUND PIPING IS TO BE INSTALLED BY A CONTRACTOR HAVING A VALID WASHINGTON STATE UTILITY CERTIFICATION.
4. ALL UNDERGROUND PIPE TO BE INSTALLED 600MM AND/OR 800MM DEEP UNLESS OTHERWISE NOTED.
5. 6" - 400 GPM 12" - 2400 GPM
6. 8" - 600 GPM 12" - 3300 GPM
7. PARROT START POINT AT FLANGES A.F.F. NODE BUILDING.

INSTALLATION NOTE

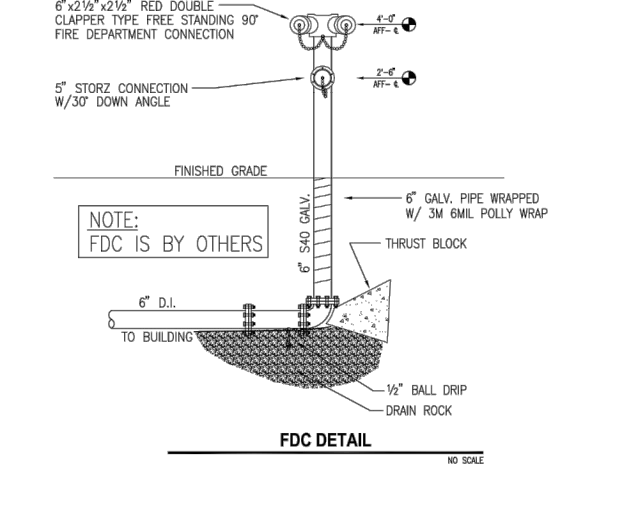
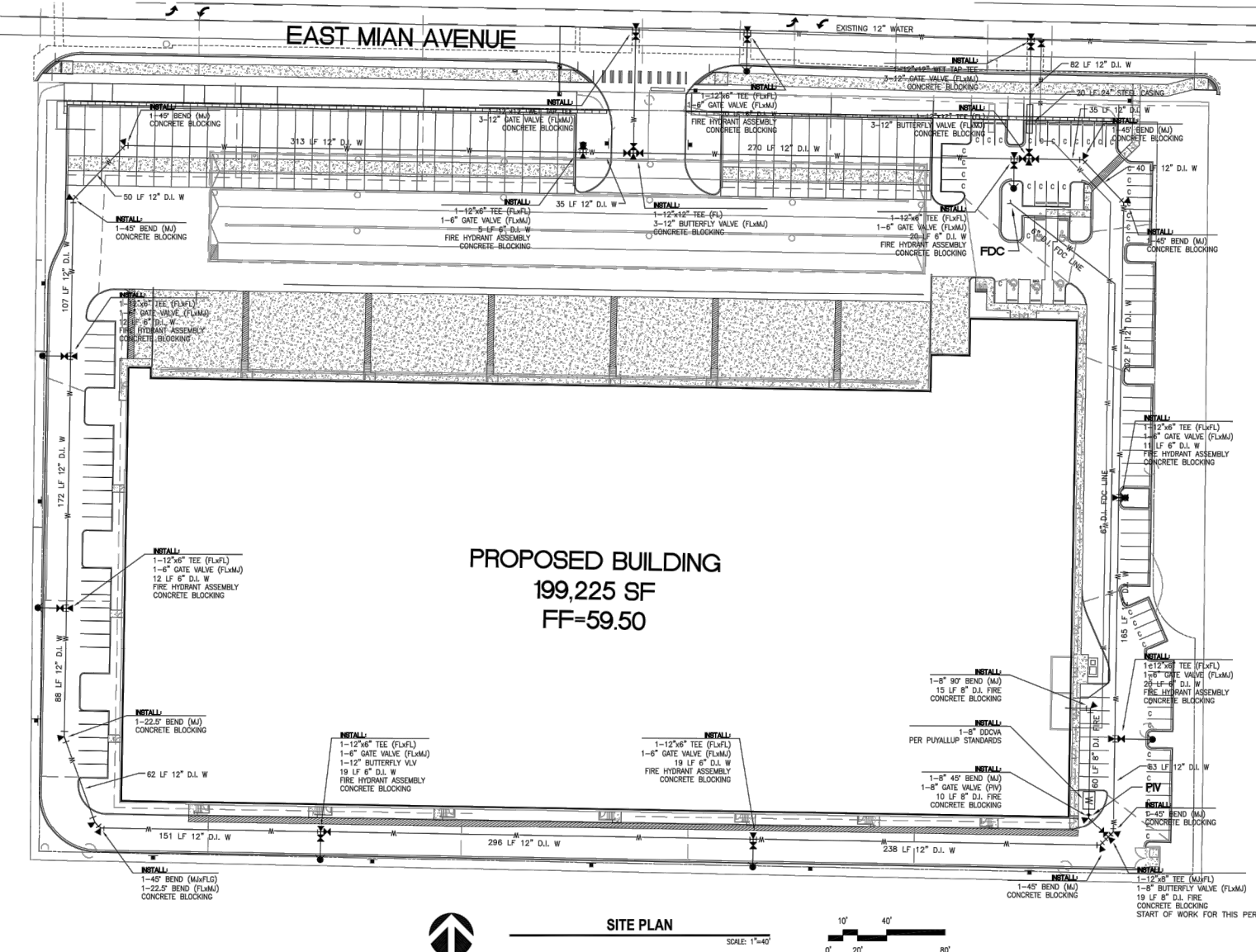
ALL WORK ON THE UNDERGROUND PORTIONS OF FIRE PROTECTION SPRINKLER SYSTEM SHALL BE INSTALLED AND COVERED BY A LICENSED CONTRACTOR WHO HAS ACHIEVED A STATE LEVEL UTILITY CERTIFICATION. SUBORDINATE TO THIS WORK TO PERFORM OR ITEMS NOT CURRENTLY LICENSED AS A FIRE PROTECTION SPRINKLER SYSTEM CONTRACTOR IS PROHIBITED UNDER WAC 212-02-01.

FLOW TEST

STATIC	55 PSI
RESIDUAL	45 PSI
FLOW	1.1 L/SEC @ 200' LOCATION
EAST MAIN	

GENERAL NOTES

1. FOR WORKING CLEARANCE, AN UNBROKEN 3'-0" FOOT SHALL BE MAINTAINED AROUND THE PIPE AND FDC.



MANAGER LEGEND

SYMBOL	DESCRIPTION
(Symbol)	ESFR SPRINKLER
(Symbol)	ESFR BRANCH LINE
(Symbol)	ESFR HANGER
(Symbol)	ESFR BRACKET
(Symbol)	ESFR DEFLECTOR
(Symbol)	ESFR RISER
(Symbol)	ESFR VALVE
(Symbol)	ESFR CONNECTION
(Symbol)	ESFR BRANCH LINE
(Symbol)	ESFR HANGER
(Symbol)	ESFR BRACKET
(Symbol)	ESFR DEFLECTOR
(Symbol)	ESFR RISER
(Symbol)	ESFR VALVE
(Symbol)	ESFR CONNECTION
(Symbol)	ESFR BRANCH LINE
(Symbol)	ESFR HANGER
(Symbol)	ESFR BRACKET
(Symbol)	ESFR DEFLECTOR
(Symbol)	ESFR RISER
(Symbol)	ESFR VALVE
(Symbol)	ESFR CONNECTION

SEISMIC BRACING LEGEND

BRACE NUMBER	SIZE OF BRACE	TYPE OF BRACE	ATTACHMENT	ATTACHMENT	MINIMUM BRACE SPACING
SB-1	2" SCH40	1" x 2" x 1/4"	FG 1001	FG 1001	42' 20'-0"
SB-2	2" SCH40	1" x 2" x 1/4"	FG 1001	FG 1001	42' 20'-0"
SB-3	2" SCH40	1" x 2" x 1/4"	FG 1001	FG 1001	42' 20'-0"
SB-4	2" SCH40	1" x 2" x 1/4"	FG 1001	FG 1001	42' 20'-0"
SB-5	2" SCH40	1" x 2" x 1/4"	FG 1001	FG 1001	42' 20'-0"
SB-6	2" SCH40	1" x 2" x 1/4"	FG 1001	FG 1001	42' 20'-0"
SB-7	2" SCH40	1" x 2" x 1/4"	FG 1001	FG 1001	42' 20'-0"
SB-8	2" SCH40	1" x 2" x 1/4"	FG 1001	FG 1001	42' 20'-0"
SB-9	2" SCH40	1" x 2" x 1/4"	FG 1001	FG 1001	42' 20'-0"
SB-10	2" SCH40	1" x 2" x 1/4"	FG 1001	FG 1001	42' 20'-0"
SB-11	2" SCH40	1" x 2" x 1/4"	FG 1001	FG 1001	42' 20'-0"
SB-12	2" SCH40	1" x 2" x 1/4"	FG 1001	FG 1001	42' 20'-0"
SB-13	2" SCH40	1" x 2" x 1/4"	FG 1001	FG 1001	42' 20'-0"
SB-14	2" SCH40	1" x 2" x 1/4"	FG 1001	FG 1001	42' 20'-0"
SB-15	2" SCH40	1" x 2" x 1/4"	FG 1001	FG 1001	42' 20'-0"
SB-16	2" SCH40	1" x 2" x 1/4"	FG 1001	FG 1001	42' 20'-0"
SB-17	2" SCH40	1" x 2" x 1/4"	FG 1001	FG 1001	42' 20'-0"

GENERAL NOTES

THIS IS AN EARLY SUPPRESSION FAST RESPONSE SPRINKLER SYSTEM BRANCH LINE & SPRINKLER HEAD LOCATION ARE CRITICAL. ESFR SYSTEMS REQUIRE SPECIAL CONCENTRATION REGARDING PLACEMENT OF LIGHTING, DUCT WORK, PROCESS PIPING, ELECTRICAL CONDUIT RACE, ETC. SPRINKLER PIPING CAN NOT BE ROUTED AROUND OBSTRUCTIONS DUE TO INCREASED FRICTION LOSSES OR LIFTED FROM ROOF STRUCTURE DUE TO CODE REQUIREMENTS. IF IT IS DETERMINED THAT REQUIRED COORDINATION WITH THE ROOF STRUCTURE, JOIST FRAME, POINT, JOIST BRACING, DUCT WORK, LIGHTING, ELECTRICAL CONDUIT AND OTHER PIPING WILL BE ACCOMMODATED TO PROVIDE THE CLEARANCE REQUIRED FOR AN ESFR SYSTEM.

MANAGER LEGEND

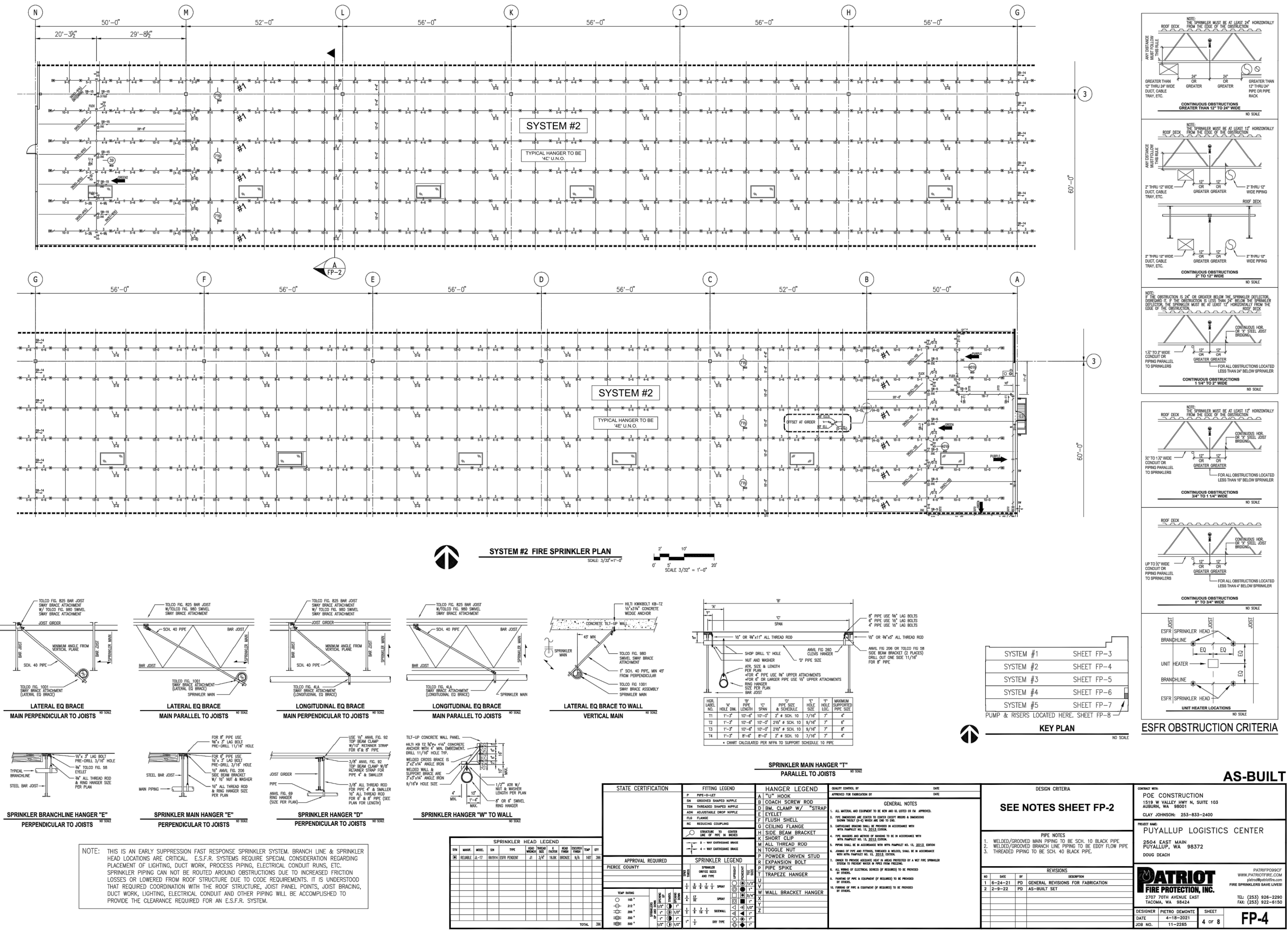
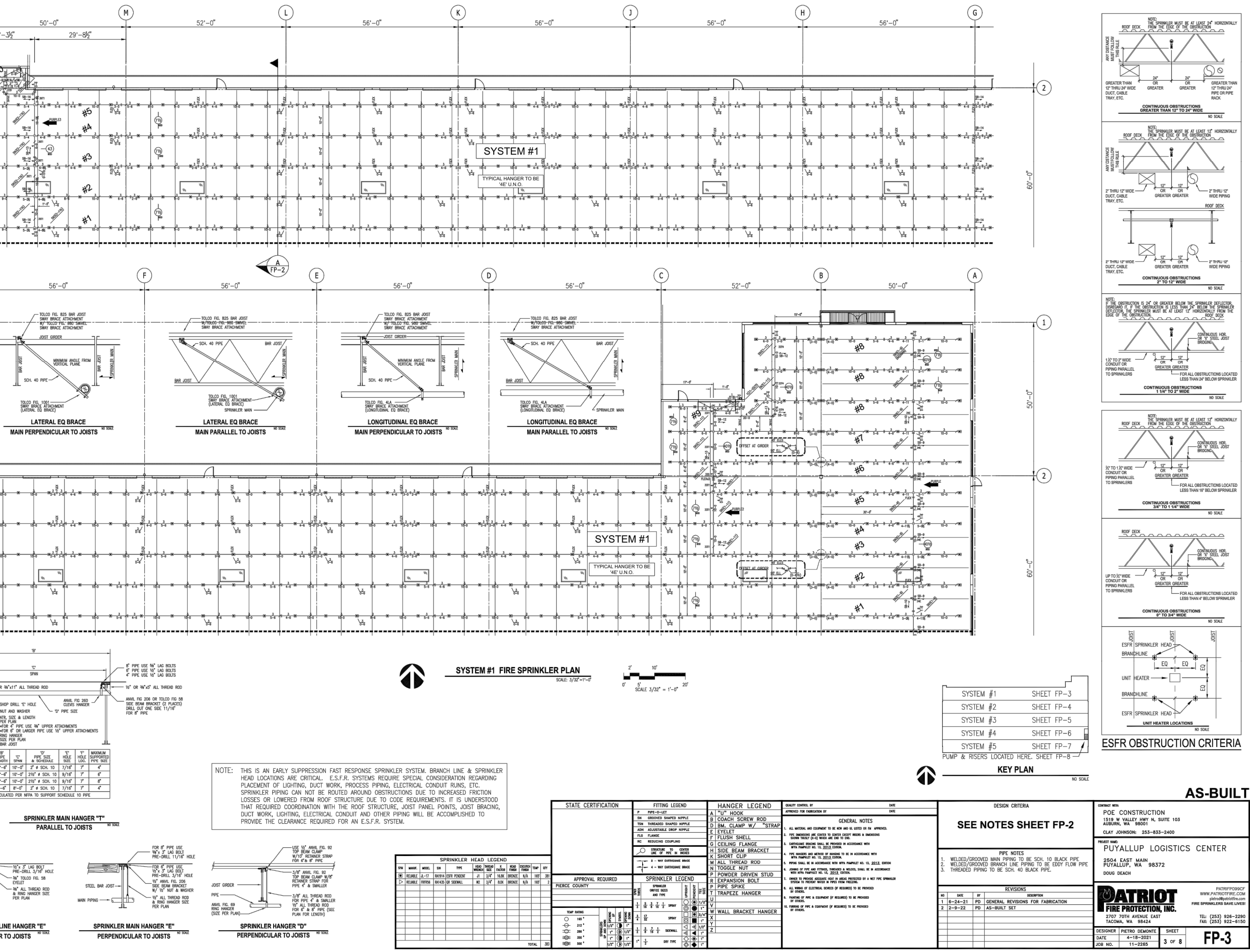
SYMBOL	DESCRIPTION
(Symbol)	ESFR SPRINKLER
(Symbol)	ESFR BRANCH LINE
(Symbol)	ESFR HANGER
(Symbol)	ESFR BRACKET
(Symbol)	ESFR DEFLECTOR
(Symbol)	ESFR RISER
(Symbol)	ESFR VALVE
(Symbol)	ESFR CONNECTION
(Symbol)	ESFR BRANCH LINE
(Symbol)	ESFR HANGER
(Symbol)	ESFR BRACKET
(Symbol)	ESFR DEFLECTOR
(Symbol)	ESFR RISER
(Symbol)	ESFR VALVE
(Symbol)	ESFR CONNECTION

SEISMIC BRACING LEGEND

BRACE NUMBER	SIZE OF BRACE	TYPE OF BRACE	ATTACHMENT	ATTACHMENT	MINIMUM BRACE SPACING
SB-1	2" SCH40	1" x 2" x 1/4"	FG 1001	FG 1001	42' 20'-0"
SB-2	2" SCH40	1" x 2" x 1/4"	FG 1001	FG 1001	42' 20'-0"
SB-3	2" SCH40	1" x 2" x 1/4"	FG 1001	FG 1001	42' 20'-0"
SB-4	2" SCH40	1" x 2" x 1/4"	FG 1001	FG 1001	42' 20'-0"
SB-5	2" SCH40	1" x 2" x 1/4"	FG 1001	FG 1001	42' 20'-0"
SB-6	2" SCH40	1" x 2" x 1/4"	FG 1001	FG 1001	42' 20'-0"
SB-7	2" SCH40	1" x 2" x 1/4"	FG 1001	FG 1001	42' 20'-0"
SB-8	2" SCH40	1" x 2" x 1/4"	FG 1001	FG 1001	42' 20'-0"
SB-9	2" SCH40	1" x 2" x 1/4"	FG 1001	FG 1001	42' 20'-0"
SB-10	2" SCH40	1" x 2" x 1/4"	FG 1001	FG 1001	42' 20'-0"
SB-11	2" SCH40	1" x 2" x 1/4"	FG 1001	FG 1001	42' 20'-0"
SB-12	2" SCH40	1" x 2" x 1/4"	FG 1001	FG 1001	42' 20'-0"
SB-13	2" SCH40	1" x 2" x 1/4"	FG 1001	FG 1001	42' 20'-0"
SB-14	2" SCH40	1" x 2" x 1/4"	FG 1001	FG 1001	42' 20'-0"
SB-15	2" SCH40	1" x 2" x 1/4"	FG 1001	FG 1001	42' 20'-0"
SB-16	2" SCH40	1" x 2" x 1/4"	FG 1001	FG 1001	42' 20'-0"
SB-17	2" SCH40	1" x 2" x 1/4"	FG 1001	FG 1001	42' 20'-0"

GENERAL NOTES

THIS IS AN EARLY SUPPRESSION FAST RESPONSE SPRINKLER SYSTEM BRANCH LINE & SPRINKLER HEAD LOCATION ARE CRITICAL. ESFR SYSTEMS REQUIRE SPECIAL CONCENTRATION REGARDING PLACEMENT OF LIGHTING, DUCT WORK, PROCESS PIPING, ELECTRICAL CONDUIT RACE, ETC. SPRINKLER PIPING CAN NOT BE ROUTED AROUND OBSTRUCTIONS DUE TO INCREASED FRICTION LOSSES OR LIFTED FROM ROOF STRUCTURE DUE TO CODE REQUIREMENTS. IF IT IS DETERMINED THAT REQUIRED COORDINATION WITH THE ROOF STRUCTURE, JOIST FRAME, POINT, JOIST BRACING, DUCT WORK, LIGHTING, ELECTRICAL CONDUIT AND OTHER PIPING WILL BE ACCOMMODATED TO PROVIDE THE CLEARANCE REQUIRED FOR AN ESFR SYSTEM.



AS-BUILT

CONSTRUCTION
PUYALLUP LOGISTICS CENTER
199,225 SF
FF-59.50

DATE: 11/10/2022
SCALE: NTS
DRAWN BY: J.TOSTANOSKI
PROJECT #: 100713607
SHEET NUMBER: **FP-3**

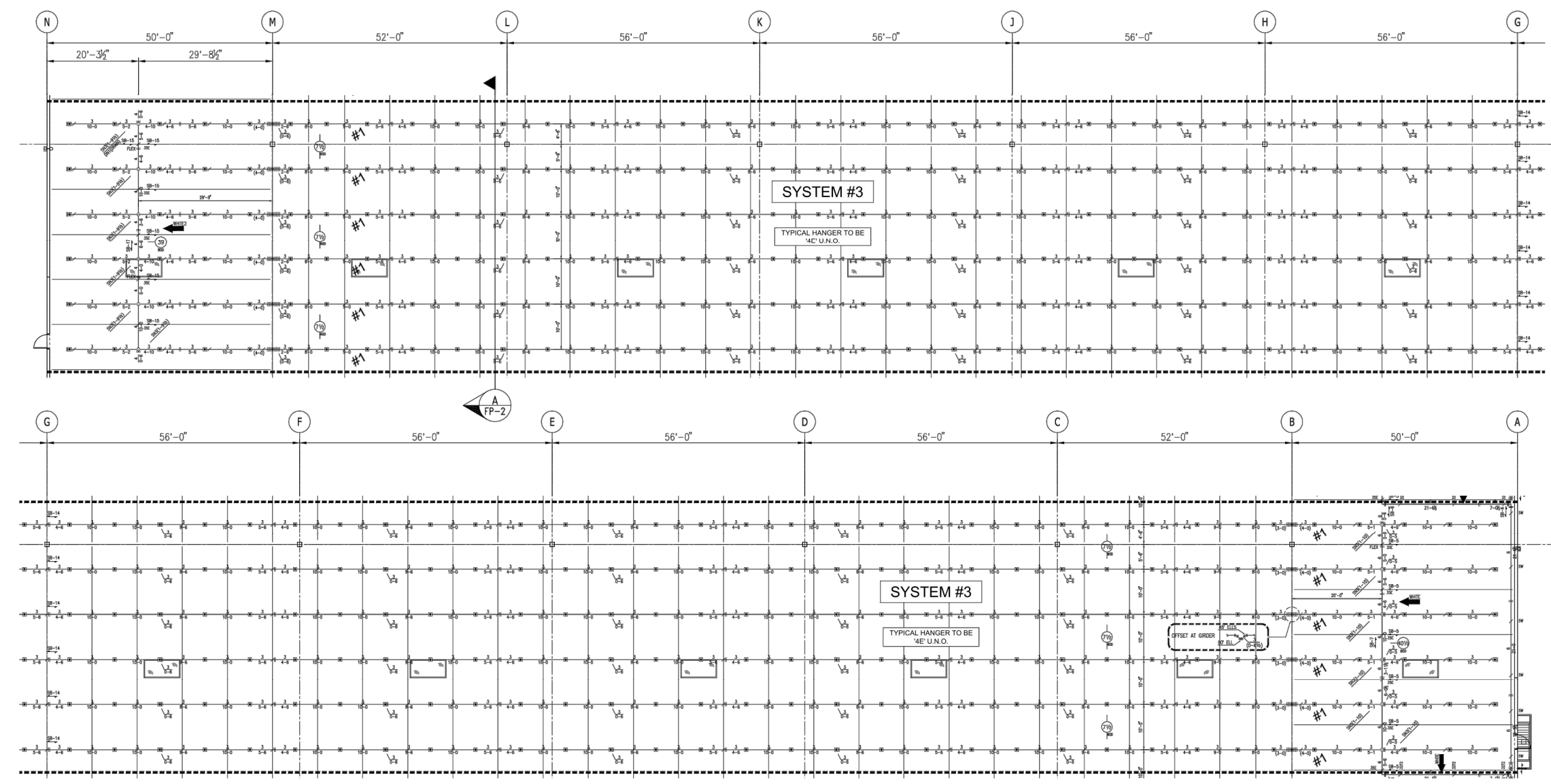
AS-BUILT

CONSTRUCTION
PUYALLUP LOGISTICS CENTER
199,225 SF
FF-59.50

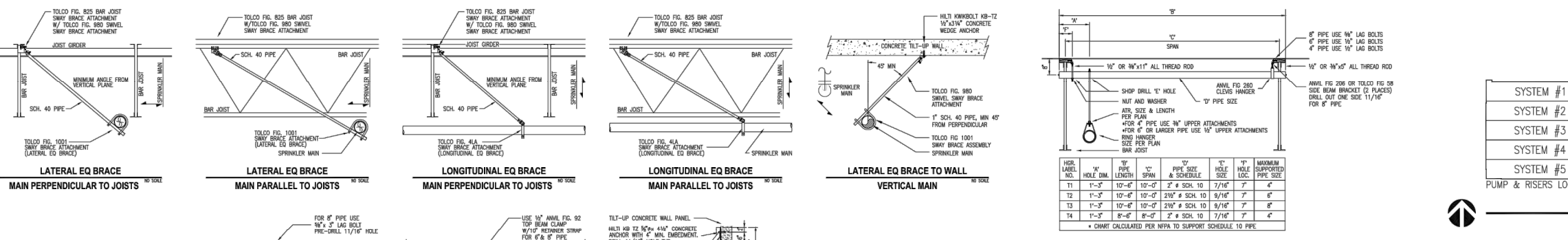
DATE: 11/10/2022
SCALE: NTS
DRAWN BY: J.TOSTANOSKI
PROJECT #: 100713607
SHEET NUMBER: **FP-4**

SPRINKLER PLANS 2 - FOR REFERENCE ONLY

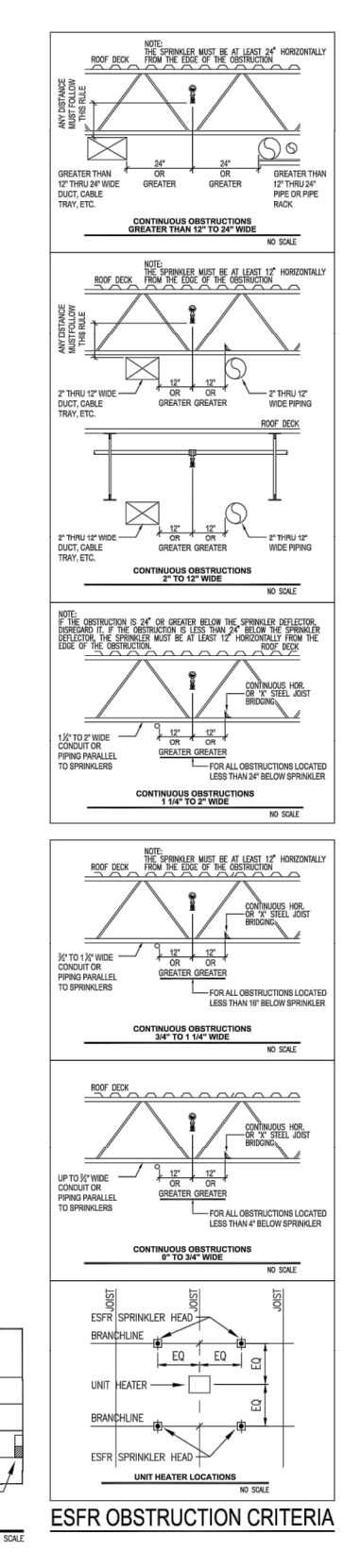
Scale: NTS



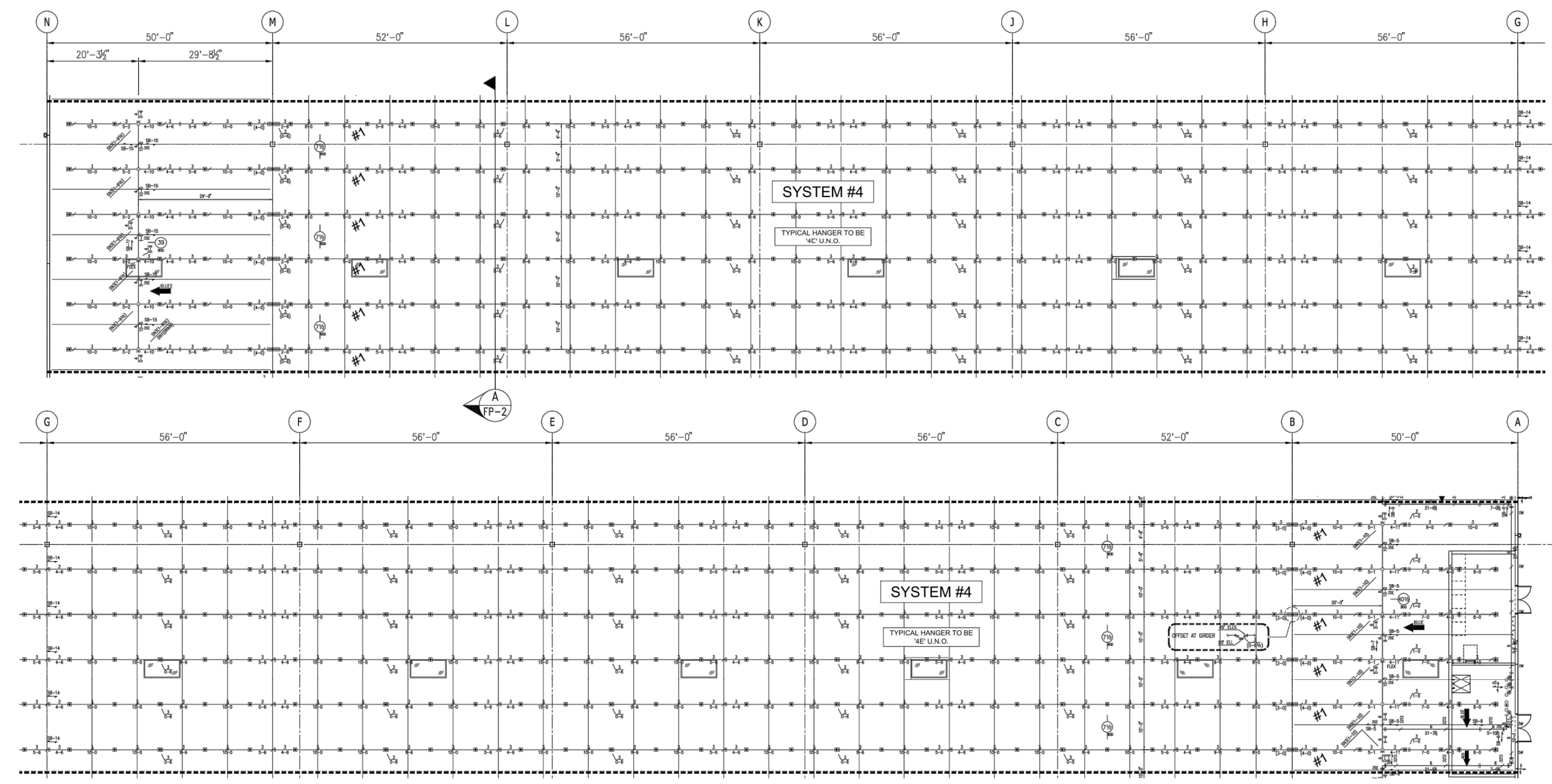
SYSTEM #3 FIRE SPRINKLER PLAN



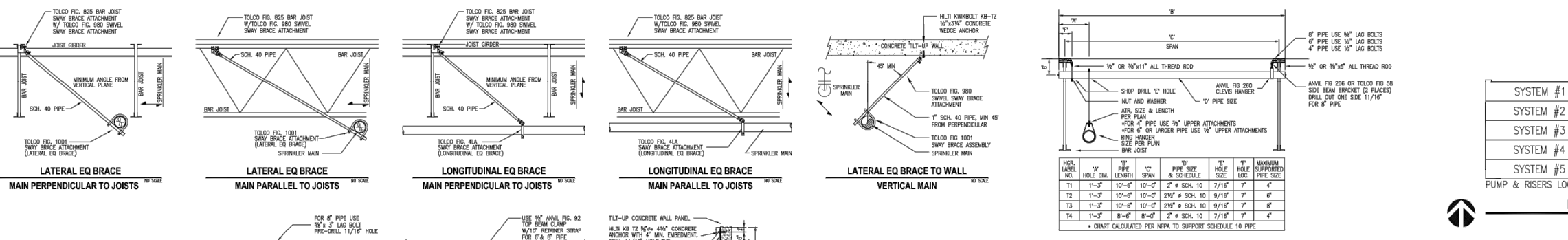
STATE CERTIFICATION	ISSUE DATES	HANGER LEGEND	GENERAL NOTES
AS-BUILT			



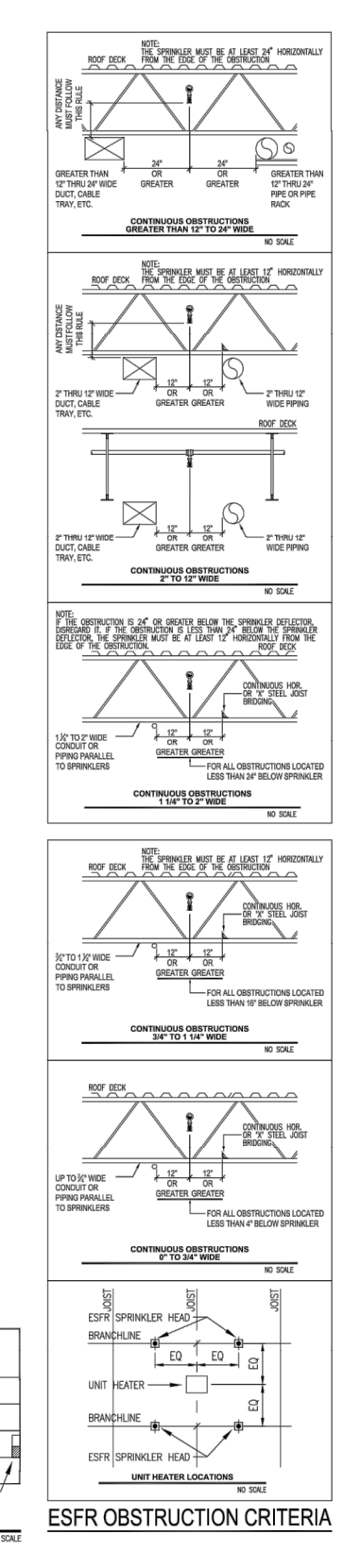
STATE CERTIFICATION	ISSUE DATES	HANGER LEGEND	GENERAL NOTES
AS-BUILT			



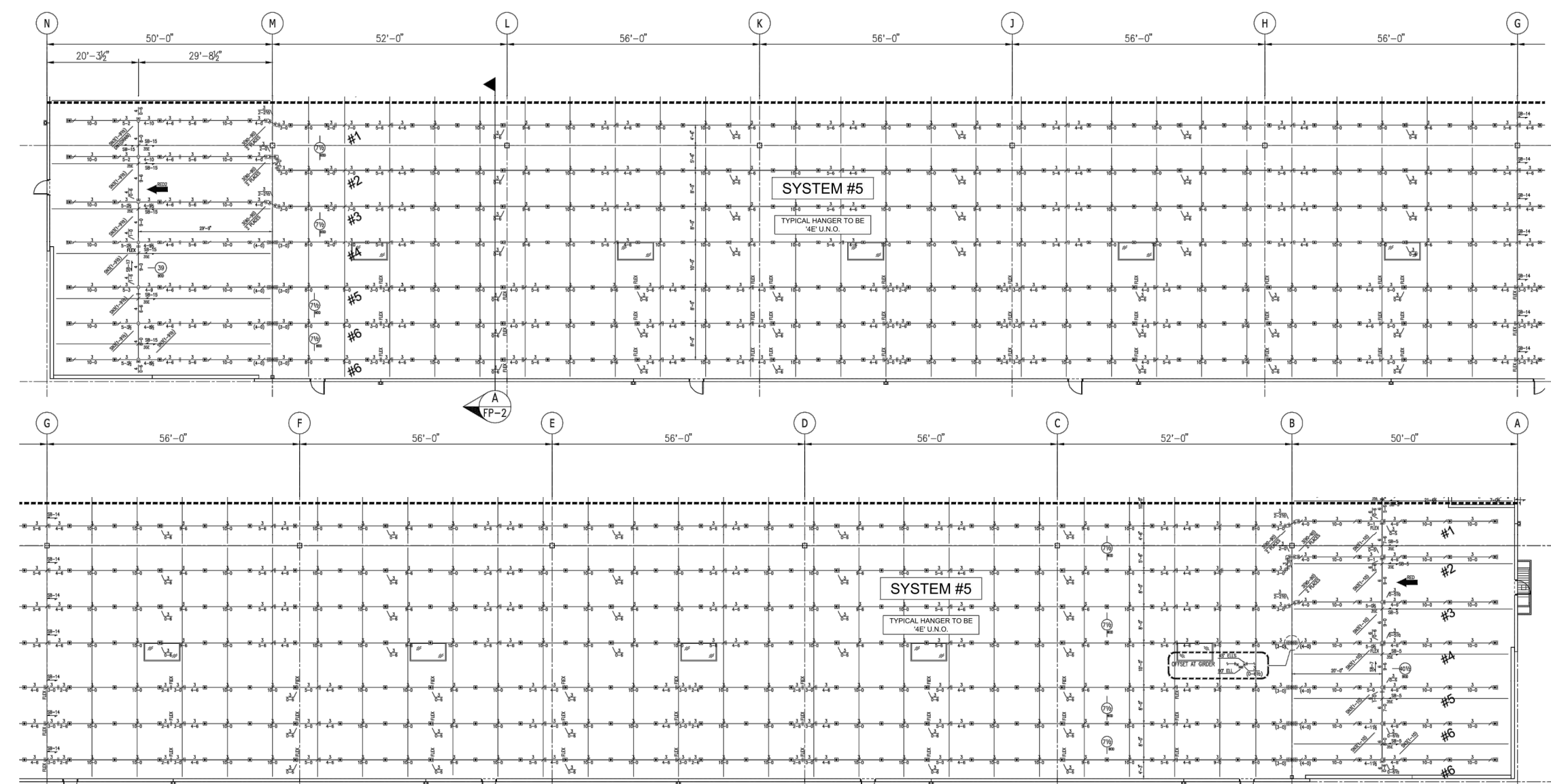
SYSTEM #4 FIRE SPRINKLER PLAN



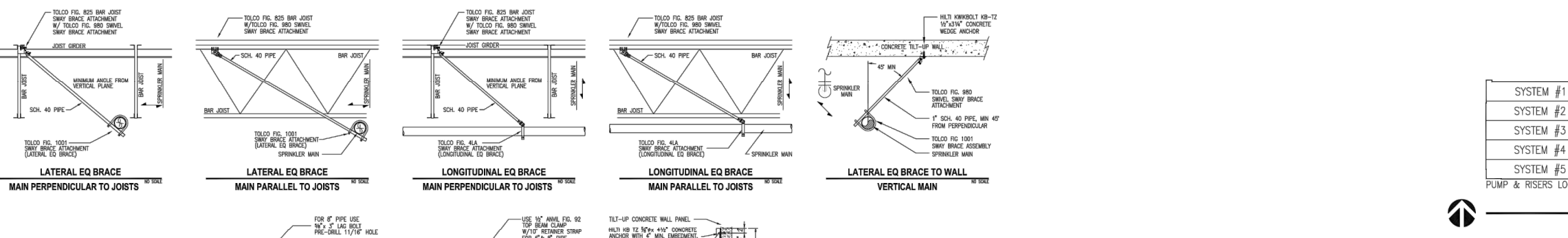
STATE CERTIFICATION	ISSUE DATES	HANGER LEGEND	GENERAL NOTES
AS-BUILT			



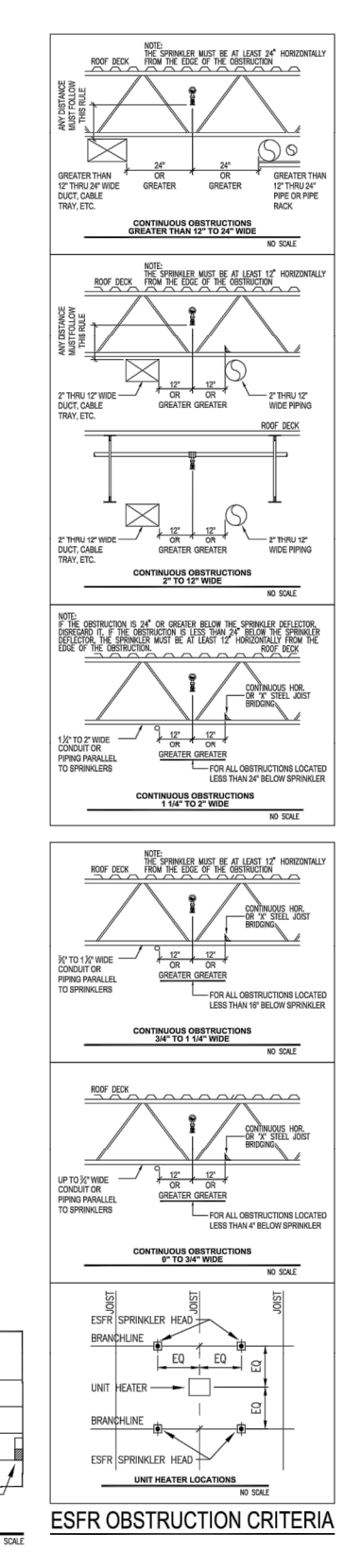
STATE CERTIFICATION	ISSUE DATES	HANGER LEGEND	GENERAL NOTES
AS-BUILT			



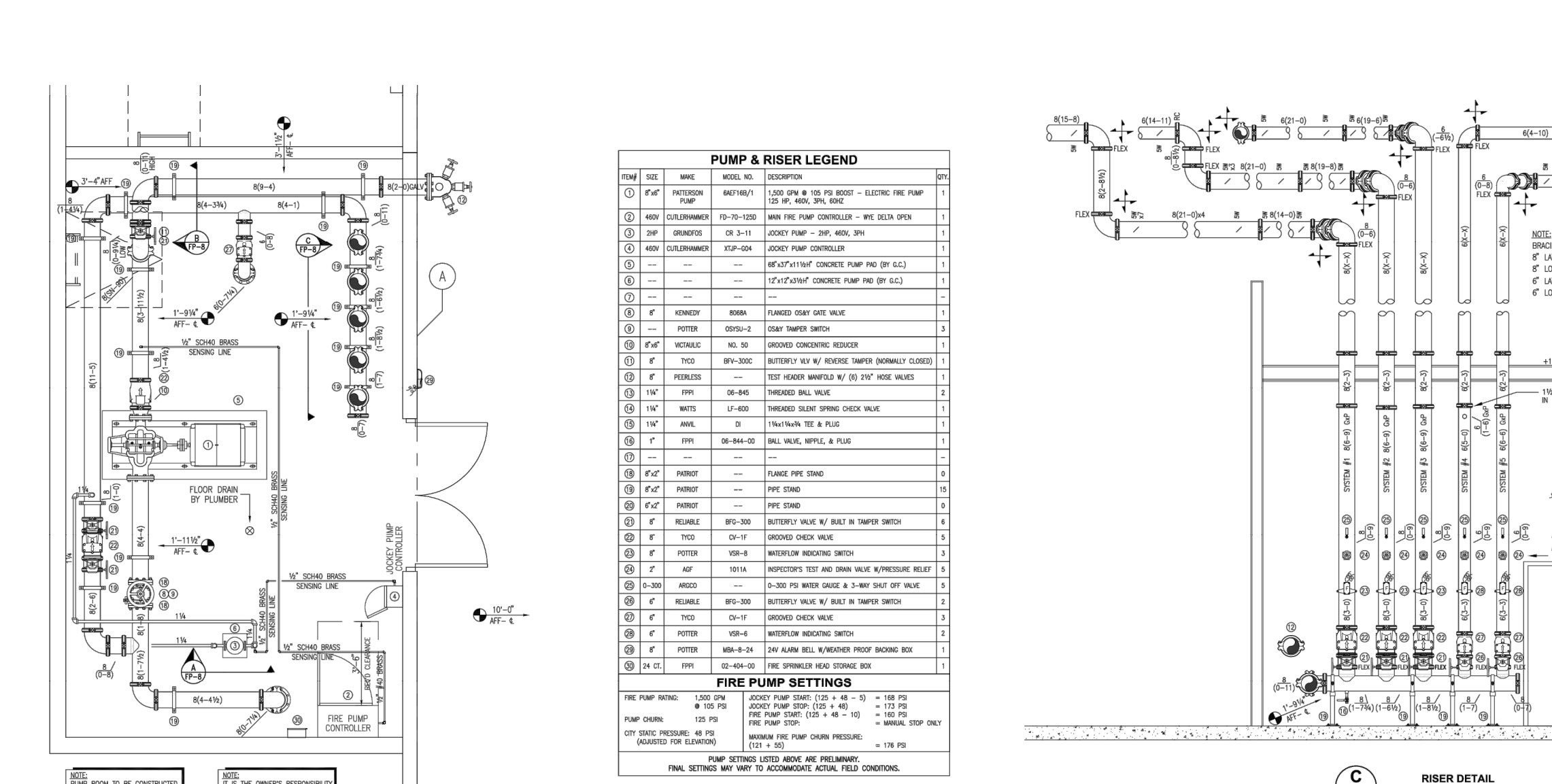
SYSTEM #5 FIRE SPRINKLER PLAN



STATE CERTIFICATION	ISSUE DATES	HANGER LEGEND	GENERAL NOTES
AS-BUILT			



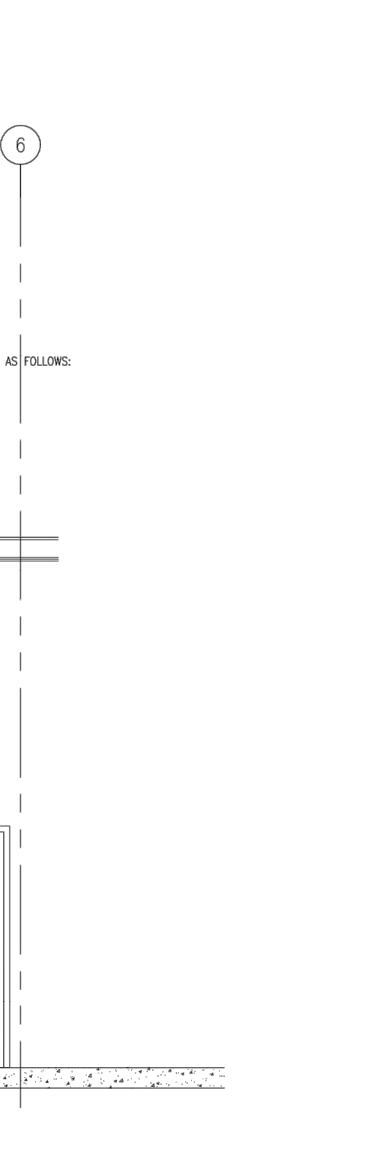
STATE CERTIFICATION	ISSUE DATES	HANGER LEGEND	GENERAL NOTES
AS-BUILT			



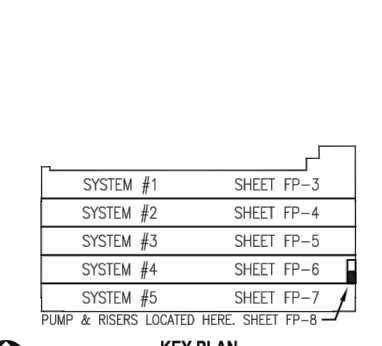
FIRE PUMP LAYOUT



STATE CERTIFICATION	ISSUE DATES	HANGER LEGEND	GENERAL NOTES
AS-BUILT			



RISER DETAIL



STATE CERTIFICATION	ISSUE DATES	HANGER LEGEND	GENERAL NOTES
AS-BUILT			

https://raymondwest.com
SEATTLE, WA
6007 287TH ST.
AUBURN, WA 98001
PHONE: 1.888.820.8811

REV. NO.	DESCRIPTION	REV. DATE	REV. BY
1	INITIAL RELEASE	09/14/2022	JON TOSKI
2	CITY CORRECTIONS MADE	11/10/2022	JON TOSKI

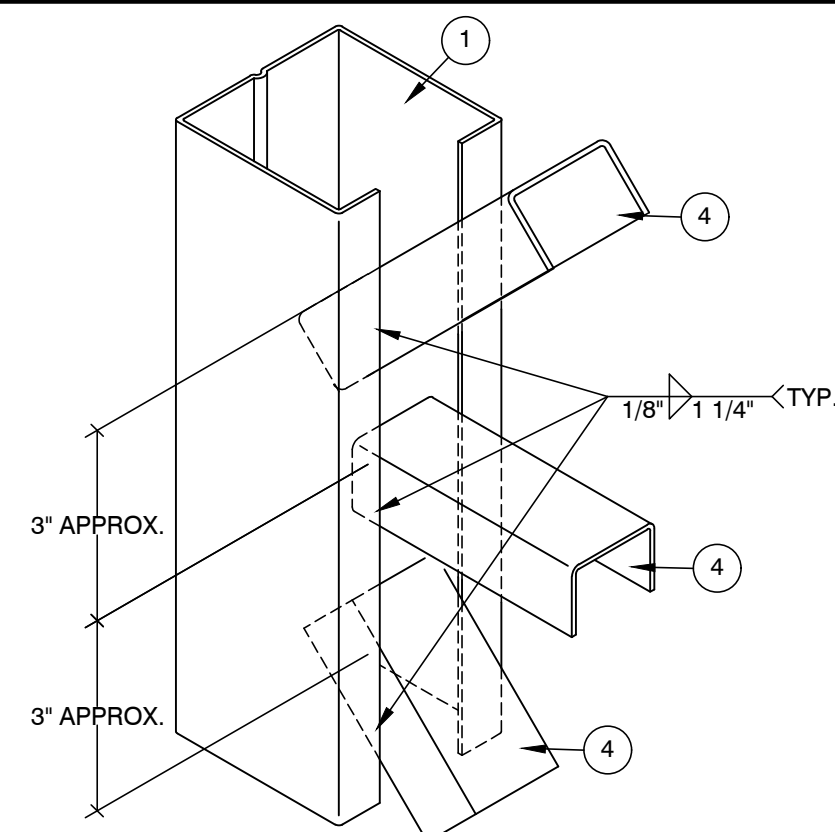
RED DOT CORPORATION
2504 EAST MAIN
PUYALLUP, WA 98372

SHEET NAME:
SPRINKLER PLANS 2

STRUCTURAL STAMP

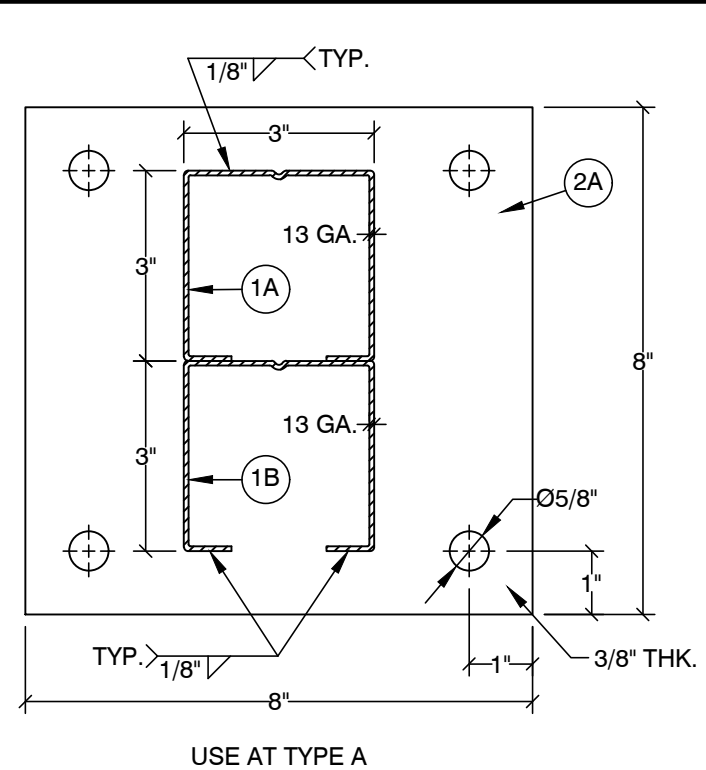
This drawing is the property of Raymond West and is to be used only by the party described in the "Customer" section and then only as indicated in the "Services" section. Copying in part or as a whole is prohibited. This is subject to a Confidentiality Agreement between Raymond West and the party described under "Customer".

DATE: 11/10/2022
SCALE: NTS
DRAWN BY: J.TOSTANOSKI
PROJECT #: 100713607
SHEET NUMBER: SS6
REV: 1



2A BASE PLATE

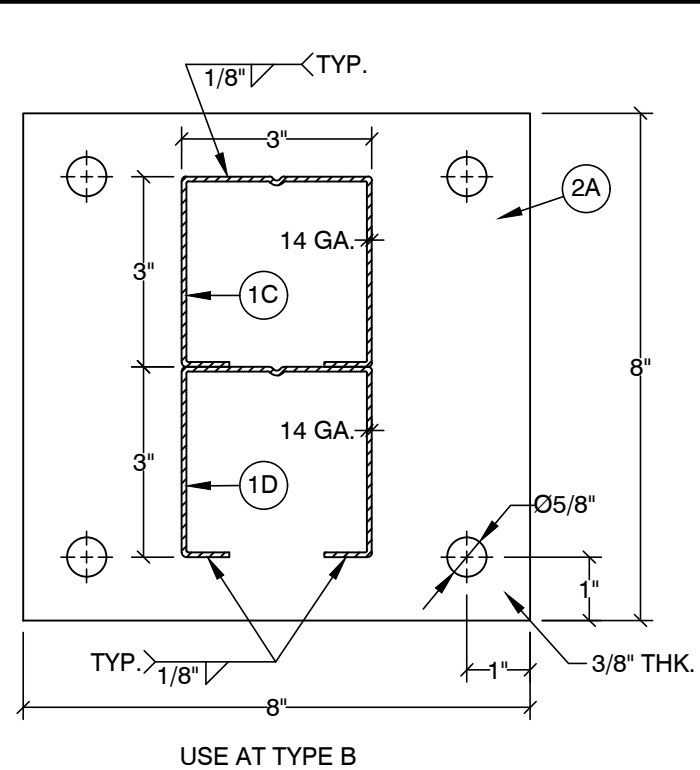
V-A TYPICAL BRACE TO COLUMN CONNECTION



1A COLUMN
1B BACKER

2A BASE PLATE

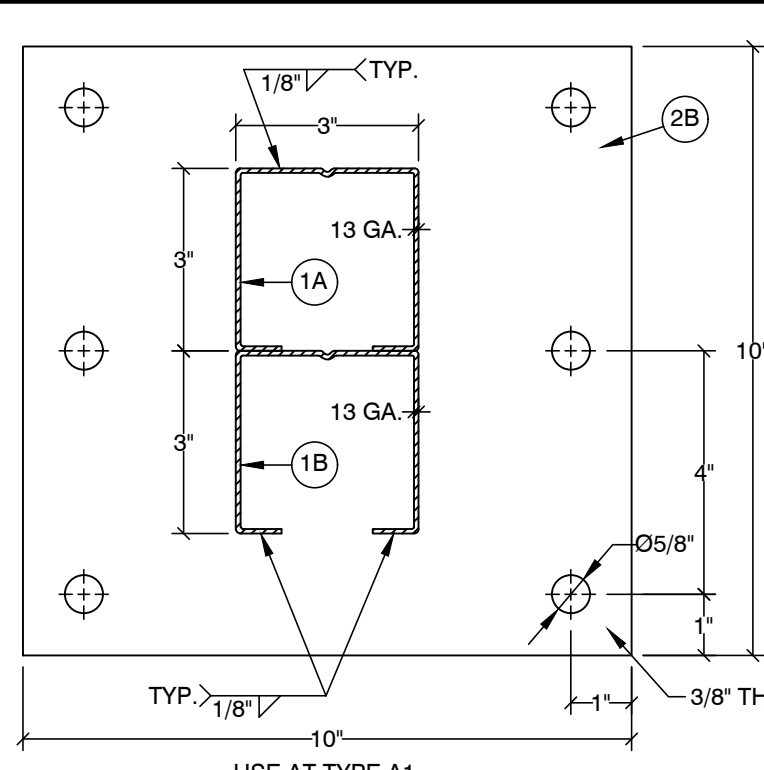
1C COLUMN



1D BACKER

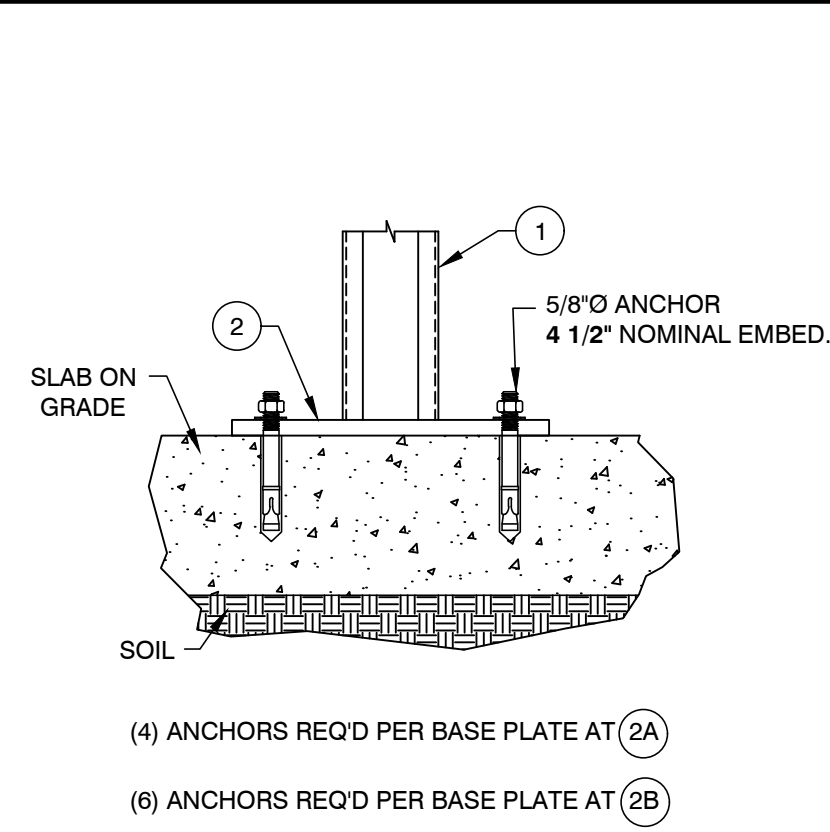
2B BASE PLATE

1A COLUMN



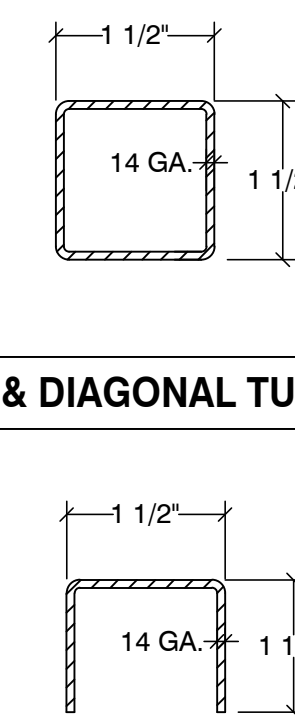
1B BACKER

3 ANCHOR

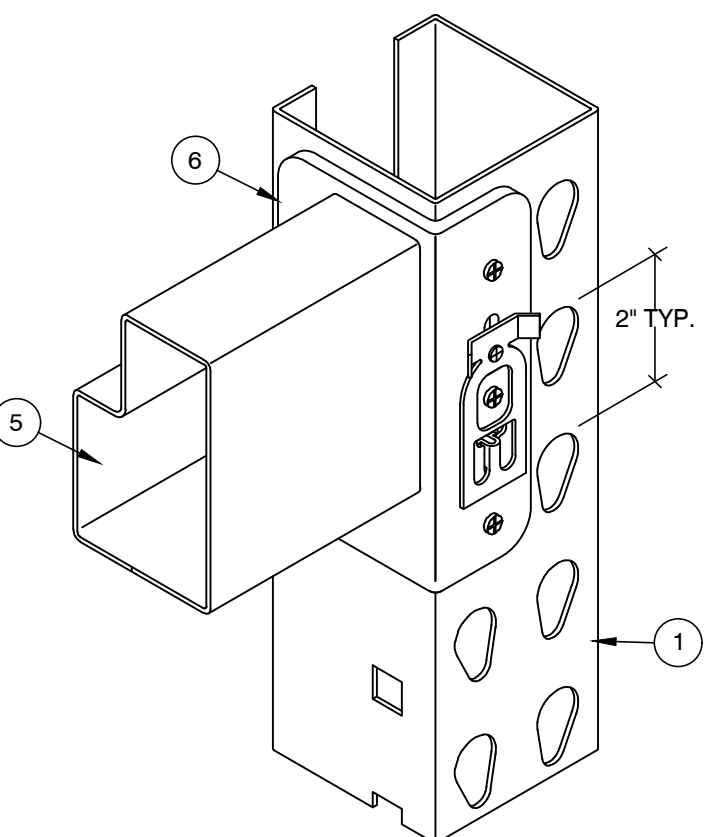


(4) ANCHORS REQ'D PER BASE PLATE AT (2A)
(6) ANCHORS REQ'D PER BASE PLATE AT (2B)

4B HORIZONTAL & DIAGONAL TUBE BRACE

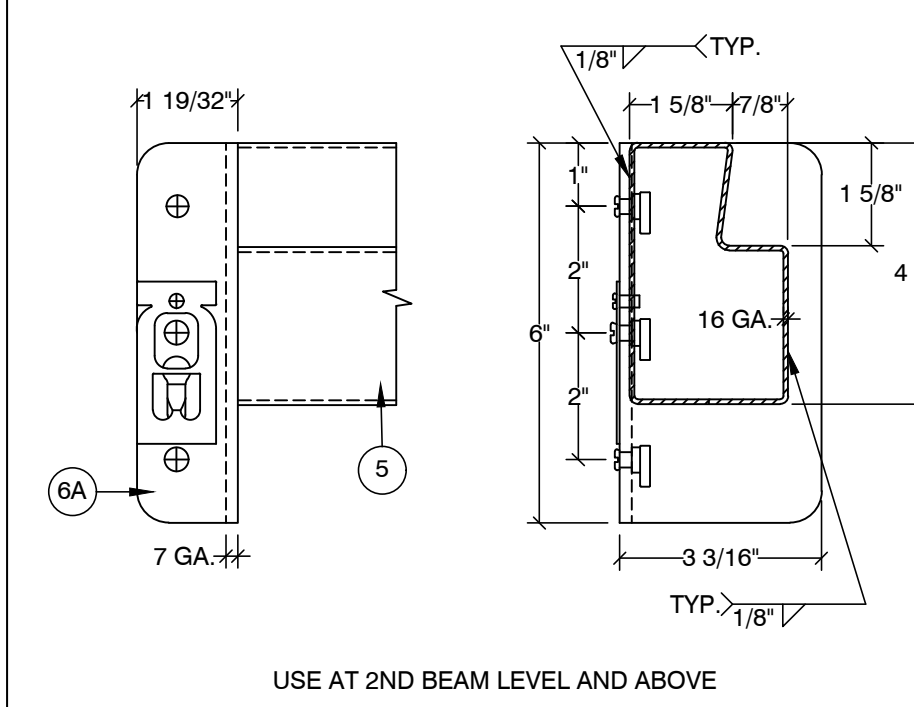


4A HORIZONTAL & DIAGONAL BRACE



6A CONNECTOR

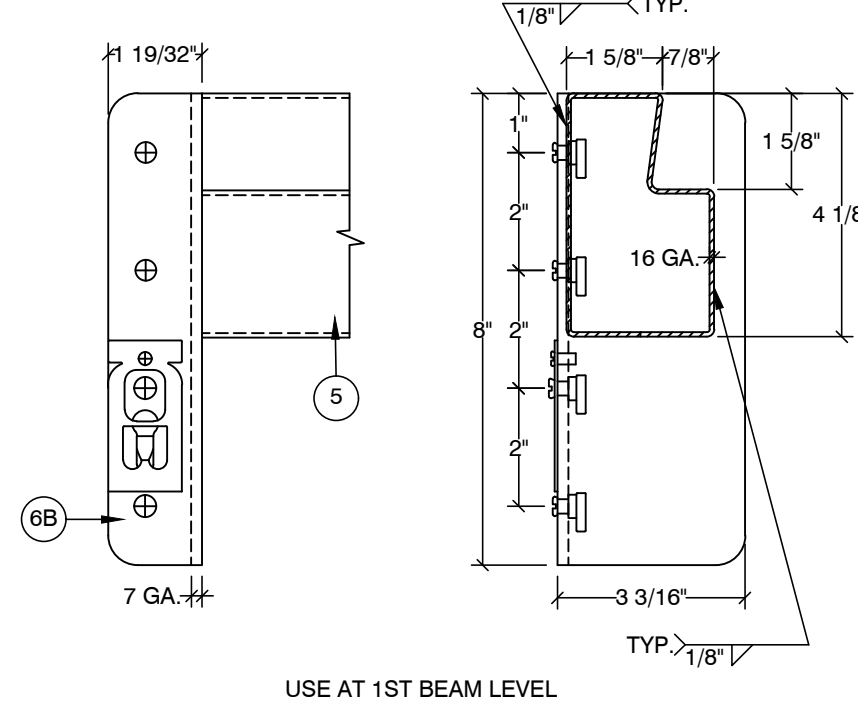
V-B TYPICAL BEAM TO COLUMN CONNECTION



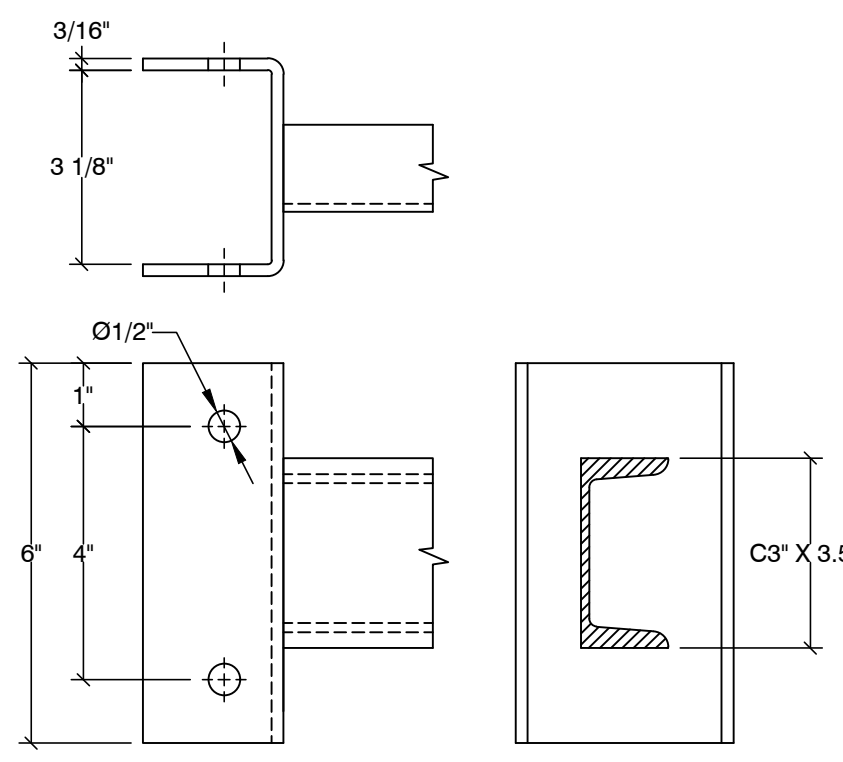
5 BEAM

6B CONNECTOR

5 BEAM

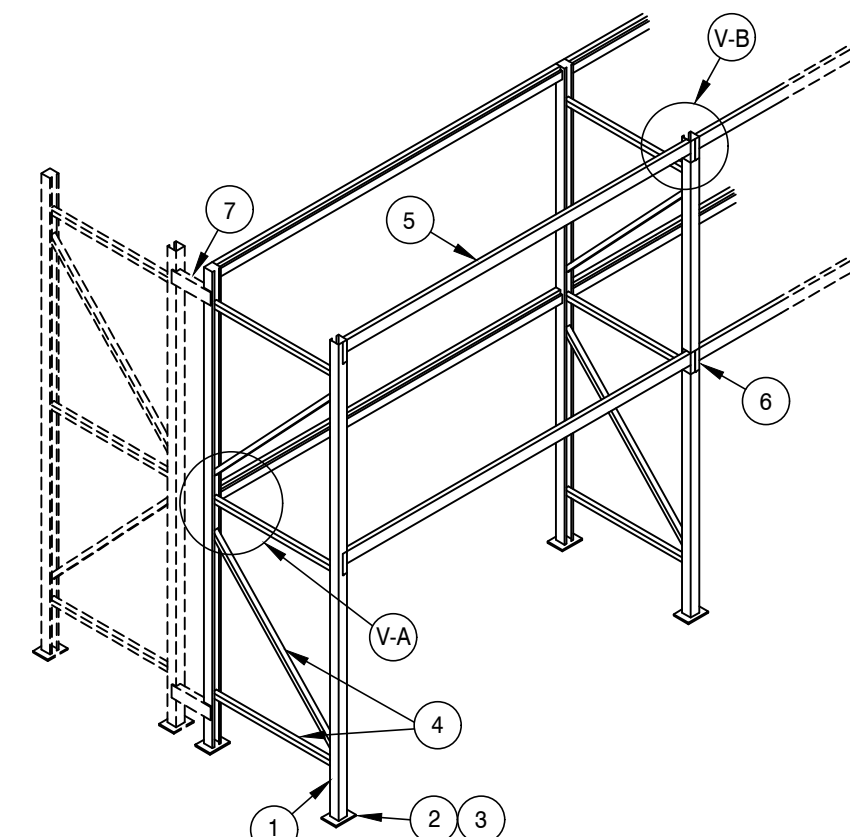


7 FRAME TIE



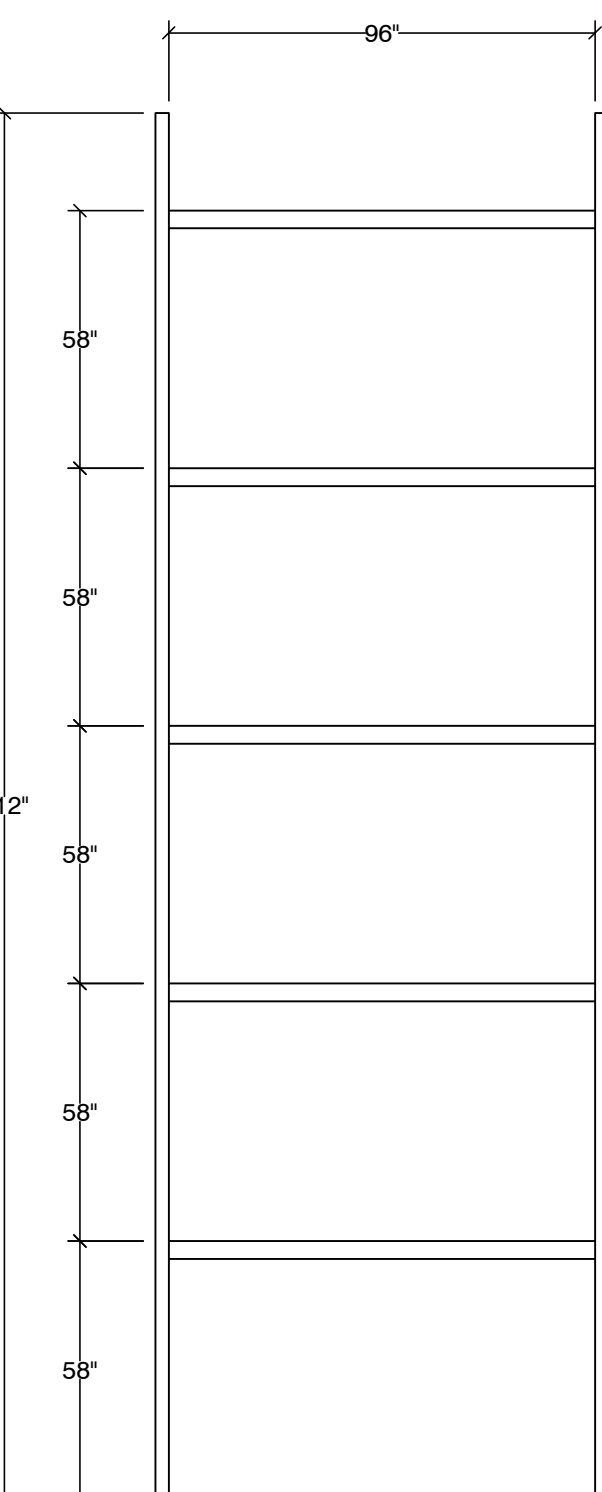
ATTACH W/ (2) 7/16" Ø A449 THRU-BOLTS AT 4" O.C.

GENERAL CONFIGURATION

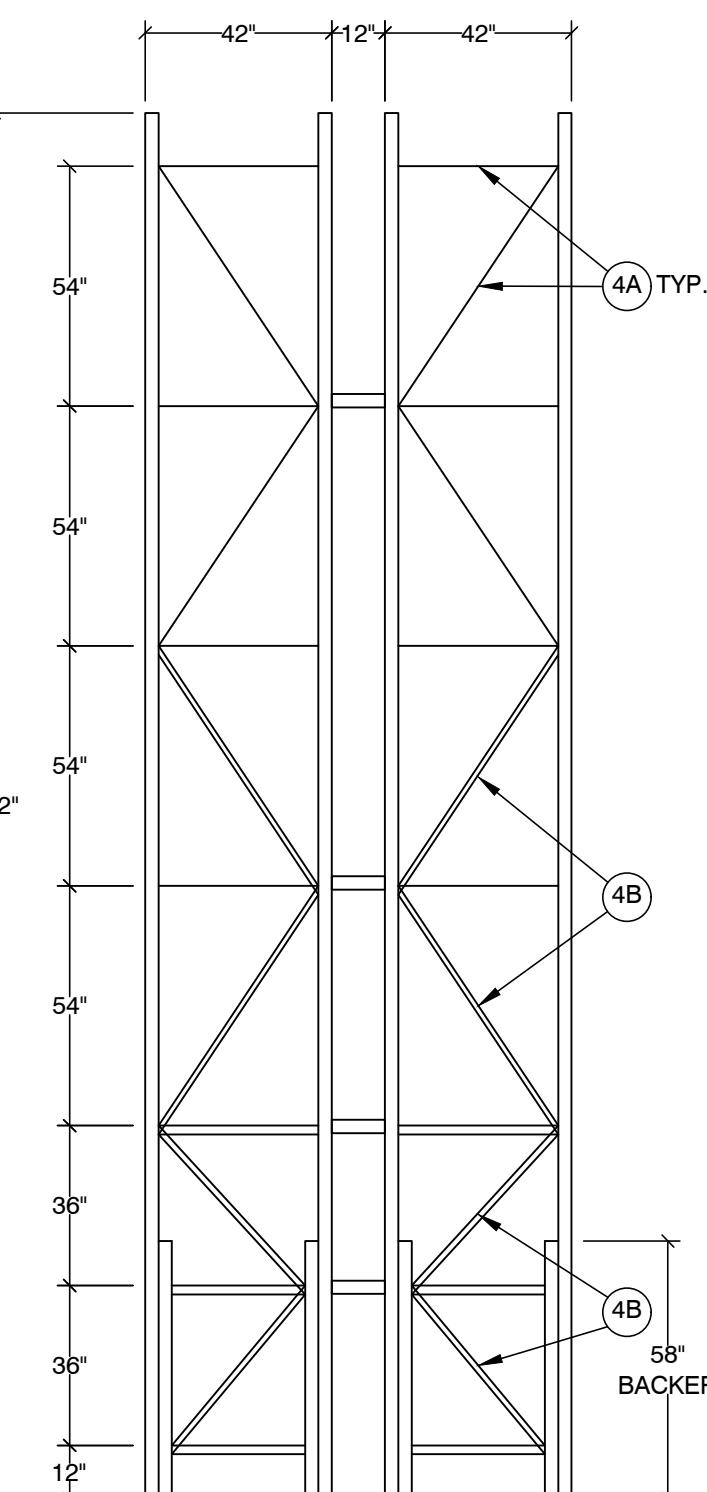


- NOTES:**
- DESIGNED PER SECTION 2209 OF THE 2018 IBC.
Fa = 1.2 & Ss = 1.26.
SEISMIC DESIGN CATEGORY: D.
 - STORAGE CAPACITY: 5,000# PER LEVEL.
 - STEEL: ASTM A1011 FOR SHAPE Fy = 55,000 PSI GRADE 55.
 - ALL BOLTS: A307 UNLESS OTHERWISE NOTED.
 - ANCHORS: HILTI KWIK BOLT TZ 2, ICC #ESR-4266.
 - PERIODIC SPECIAL INSPECTION IS REQUIRED DURING ANCHOR INSTALLATION.
 - CONCRETE: 7" THICK x 4,000 PSI.
 - MODULUS OF SUB-GRADE REACTION: 50 PCI. (DISTURBED SOIL: 500 PSF)
 - THE MAXIMUM TOP TO BOTTOM OUT-OF-PLUMB RATIO AND OUT-OF-STRAIGHT RATIO RACK COLUMN IS 1/240 (FOR EXAMPLE 1/2" PER 10 FEET OF HEIGHT), COLUMN WHOSE OUT-OF-PLUMB RATIO OR OUT-OF-STRAIGHT RATIO EXCEEDS THIS LIMIT SHALL BE UNLOADED AND RE-PLUMBED. ANY DAMAGED PARTS MUST BE REPAIRED OR REPLACED.
 - THE OWNER SHALL MAINTAIN THE STRUCTURAL INTEGRITY OF THE RACK SYSTEM BY ASSURING PROPER OPERATIONAL, HOUSE KEEPING, AND MAINTENANCE PROCEDURES, BUT NOT LIMITED TO, THE FOLLOWING:
 - PROHIBIT ANY OVER LOADING OF ANY PALLET POSITIONS AND OF THE OVERALL RACK SYSTEM.
 - REGULARLY INSPECT FOR DAMAGE. IF DAMAGE IS FOUND, IMMEDIATELY UNLOAD THE AFFECTED AREA AND REPLACE OR REPAIR ANY DAMAGED COLUMNS, BEAMS, OR OTHER STRUCTURAL COMPONENTS.
 - REQUIRE ALL PALLETS TO BE MAINTAINED IN GOOD, SAFE OPERATING CONDITION.
 - ENSURE THAT PALLETS ARE PROPERLY PLACED ONTO PALLET LOAD SUPPORT MEMBERS IN PROPERLY STACKED AND STABLE POSITION.
 - REQUIRE THAT ALL GOODS STORED ON EACH PALLET TO BE PROPERLY STACKED AND STABLE.
 - PROHIBIT DOUBLE STACKING OF ANY PALLET POSITION, INCLUDING THE TOP MOST POSITION, UNLESS THE RACK SYSTEM IS SPECIFICALLY DESIGNED FOR SUCH LOADING.
 - ENSURE THAT THE RACKS ARE NOT MODIFIED OR REARRANGED IN A MANNER NOT WITHIN THE ORIGINAL DESIGN CONFIGURATIONS.

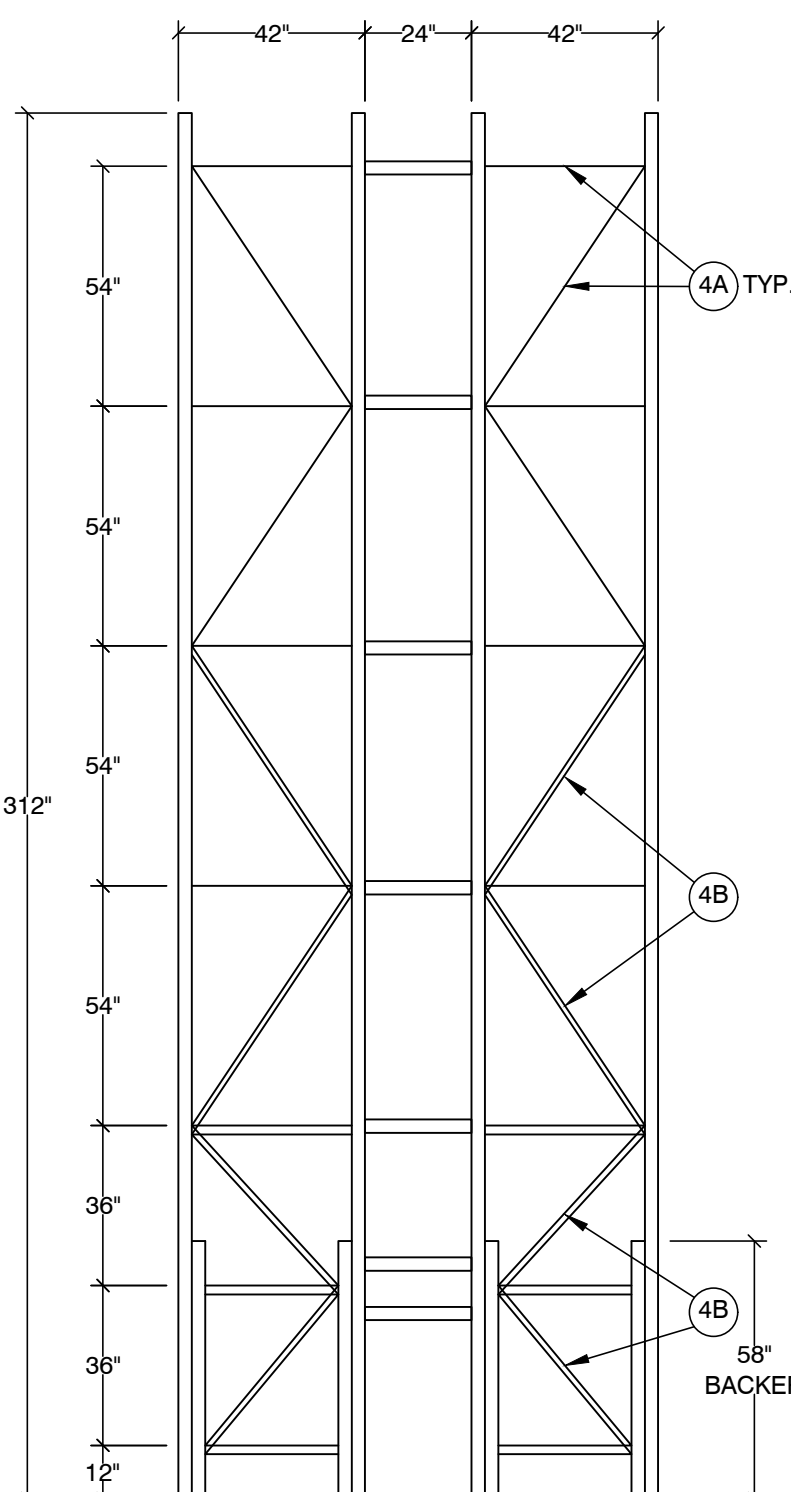
TYPE A



FRONT VIEW

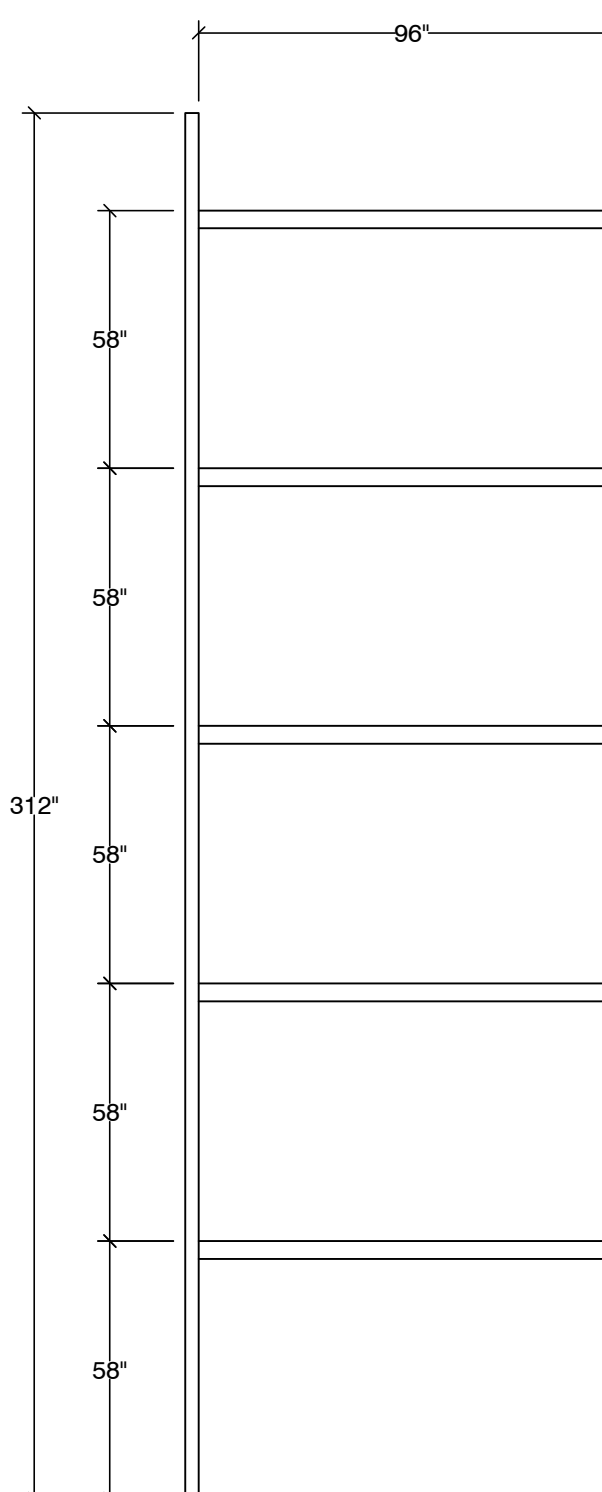


SIDE VIEW

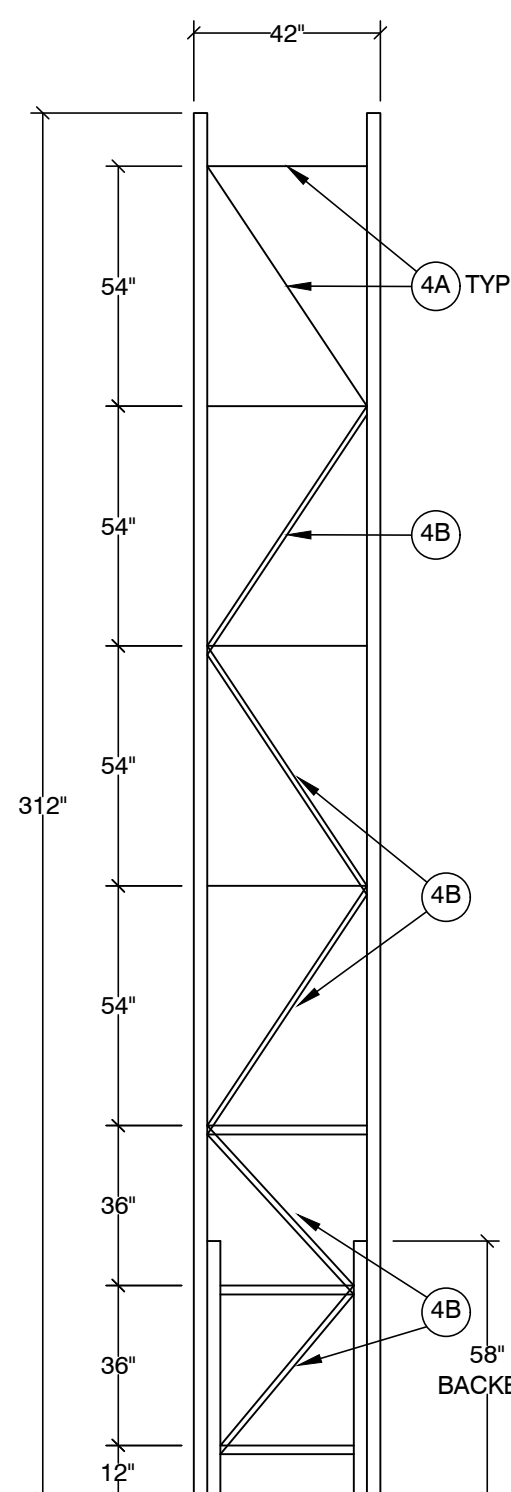


SIDE VIEW

TYPE A1

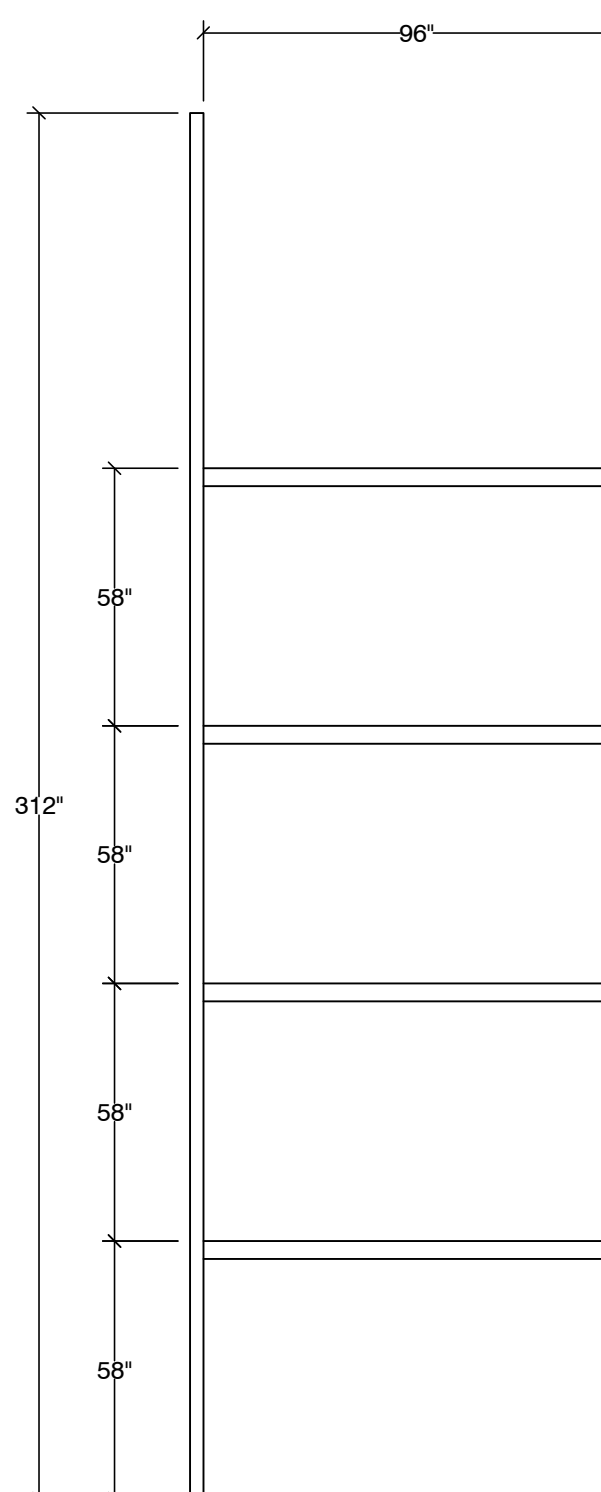


FRONT VIEW

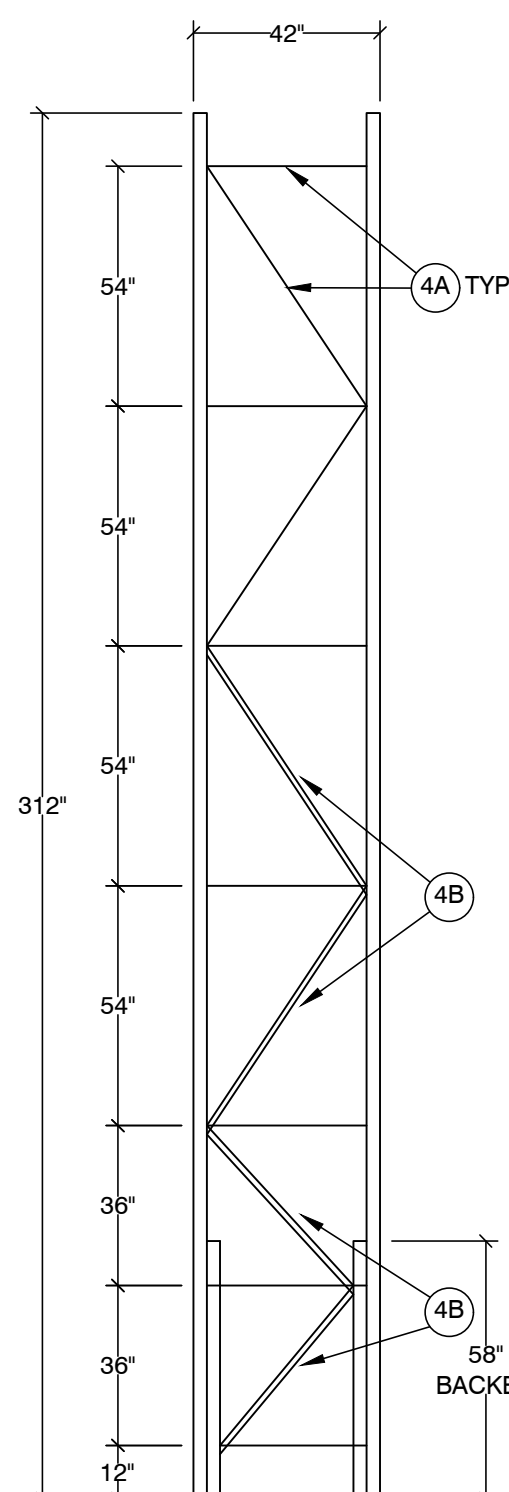


SIDE VIEW

TYPE B



FRONT VIEW



SIDE VIEW

STORAGE RACK ELEVATIONS

RED DOT CORP. WA
2504 EAST MAIN AVE
PUYALLUP, WA 98372

REV	DATE	BY	DESCRIPTION

REV	DATE	BY	DESCRIPTION

SEIZMIC
EST. 1985
SEIZMIC ENGINEERING, INC.
1130 E. Cypress St.
Covina, California 91724
Tel. (909) 869-0989

DRAWN BY: B.G. / A.N.
DATE: 10/13/22
LAST REV BY:

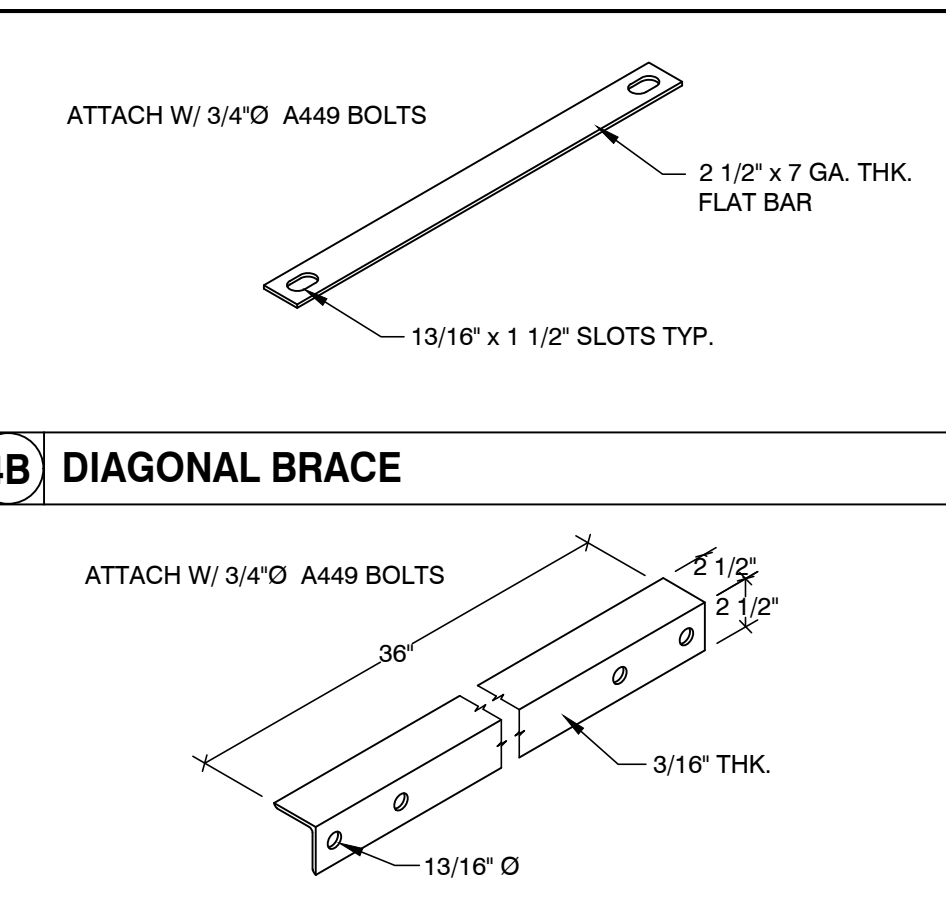
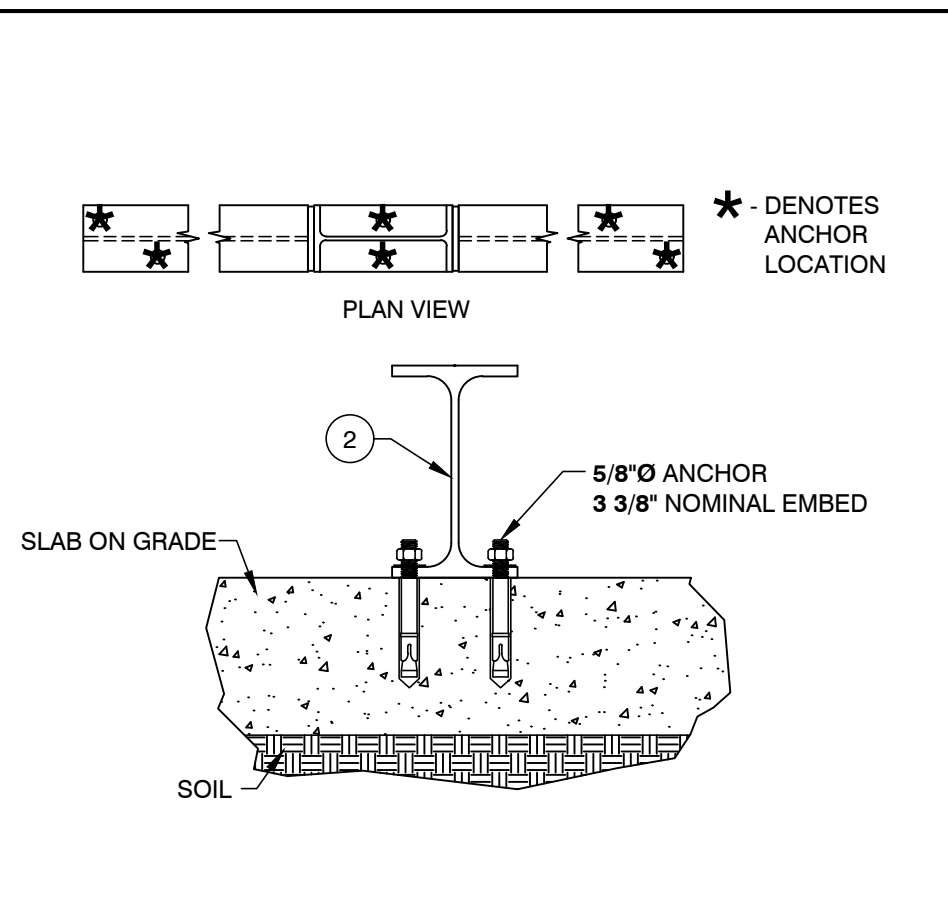
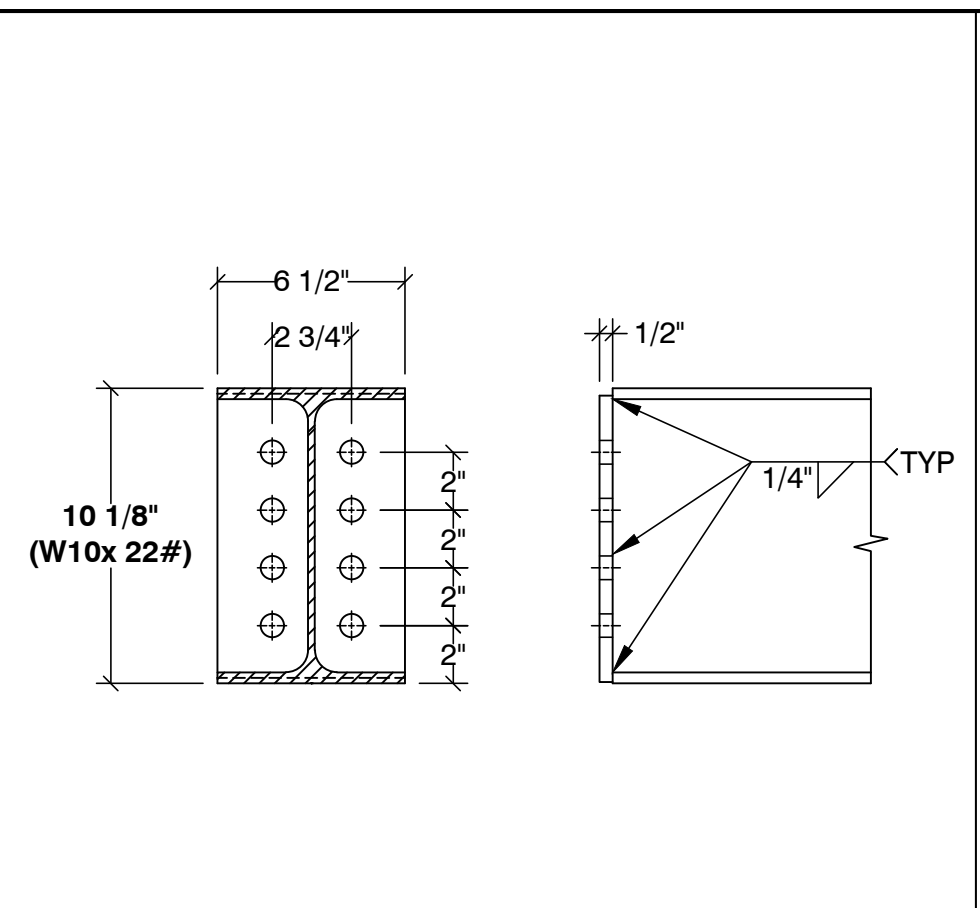
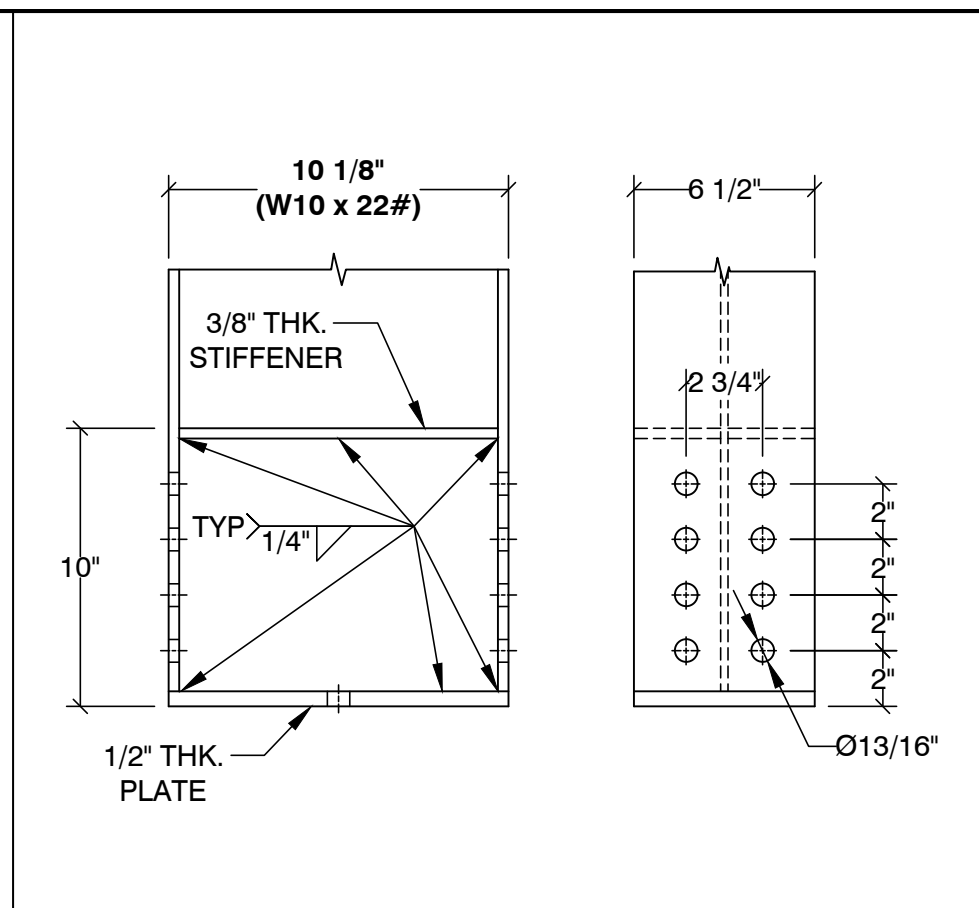
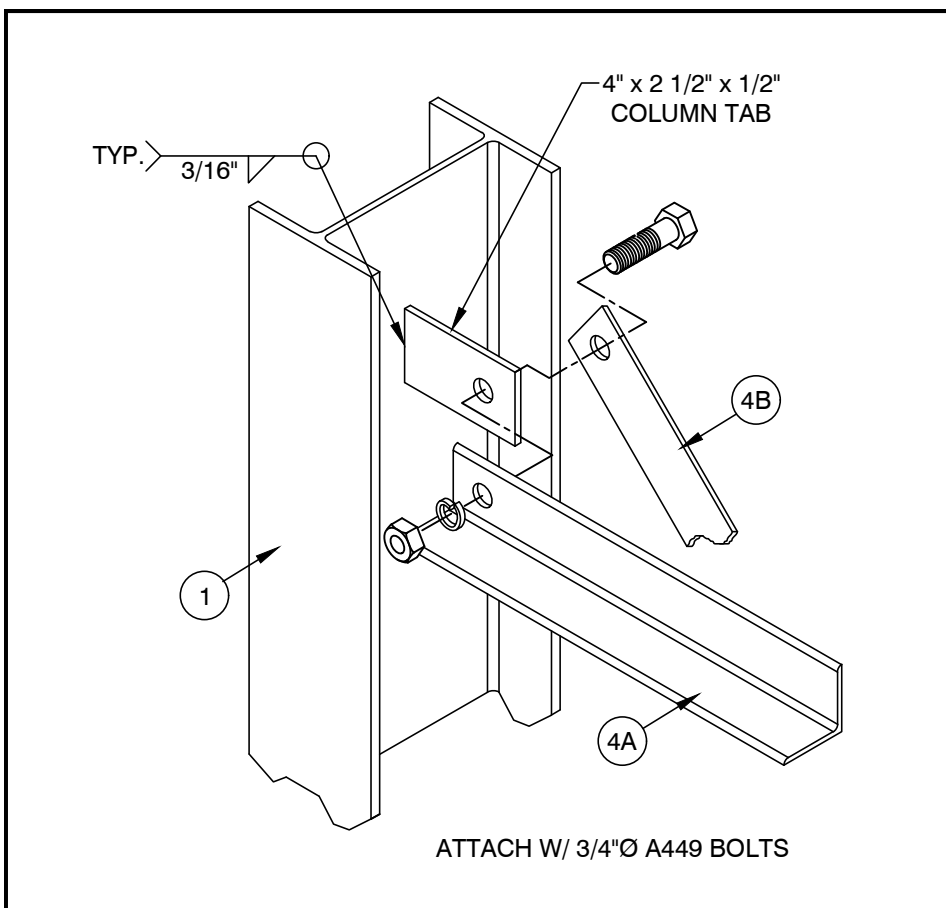
REV DATE:

TYPE: SPC
SCALE: N.T.S.
APRVD BY: SAL E. FATEEN



DESCRIPTION:
STORAGE RACK DETAILS (22-2726-A)

DRAWING NUMBER:
SS7.1



NOTES:
 1. DESIGNED PER SECTION 1613 OF THE 2018 IBC.
 Fa = 1.2 & Ss = 1.26.
 2. STORAGE CAPACITY: 1,750# PER ARM.
 3. STEEL: ASTM A572, Fy = 50,000 PSI GRADE 50.
 4. ALL BOLTS: A307 (UNLESS OTHERWISE NOTED).
 5. ANCHORS: SIMPSON STRONG BOLT 2, ICC #ESR-3037.
 6. PERIODIC SPECIAL INSPECTION IS REQUIRED DURING ANCHOR INSTALLATION.
 7. CONCRETE: 7" THICK x 4,000 PSI.
 8. SOIL BEARING PRESSURE: 1,000 PSF

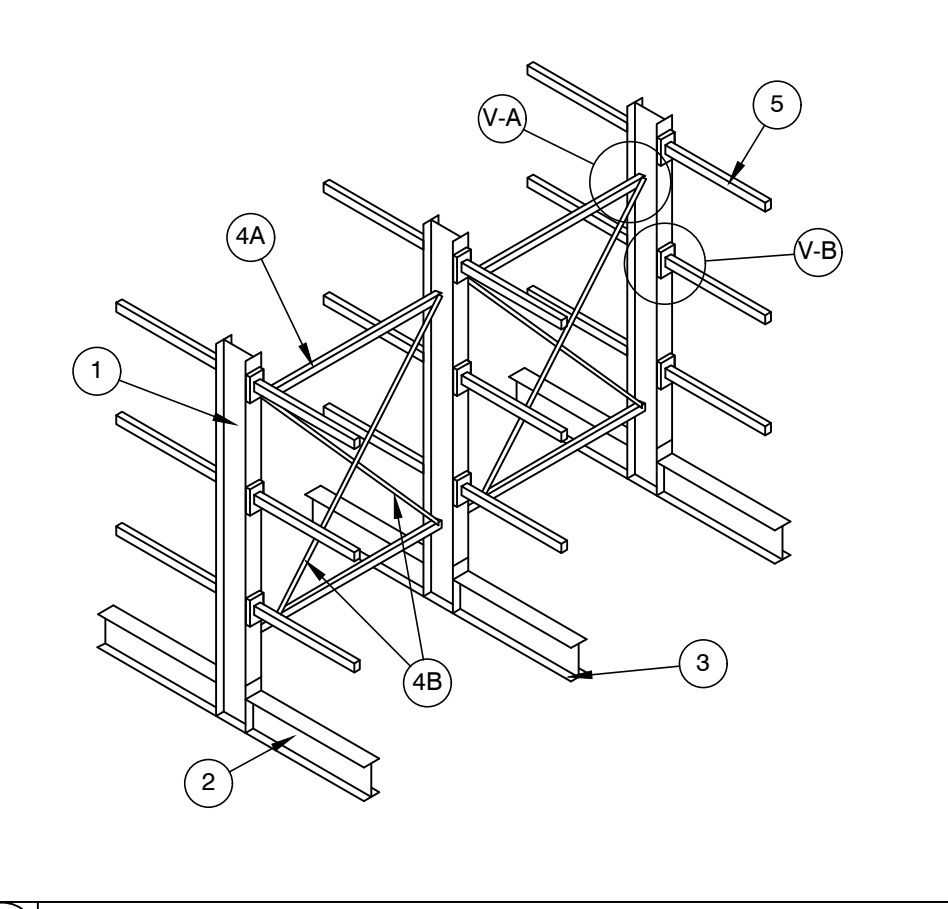
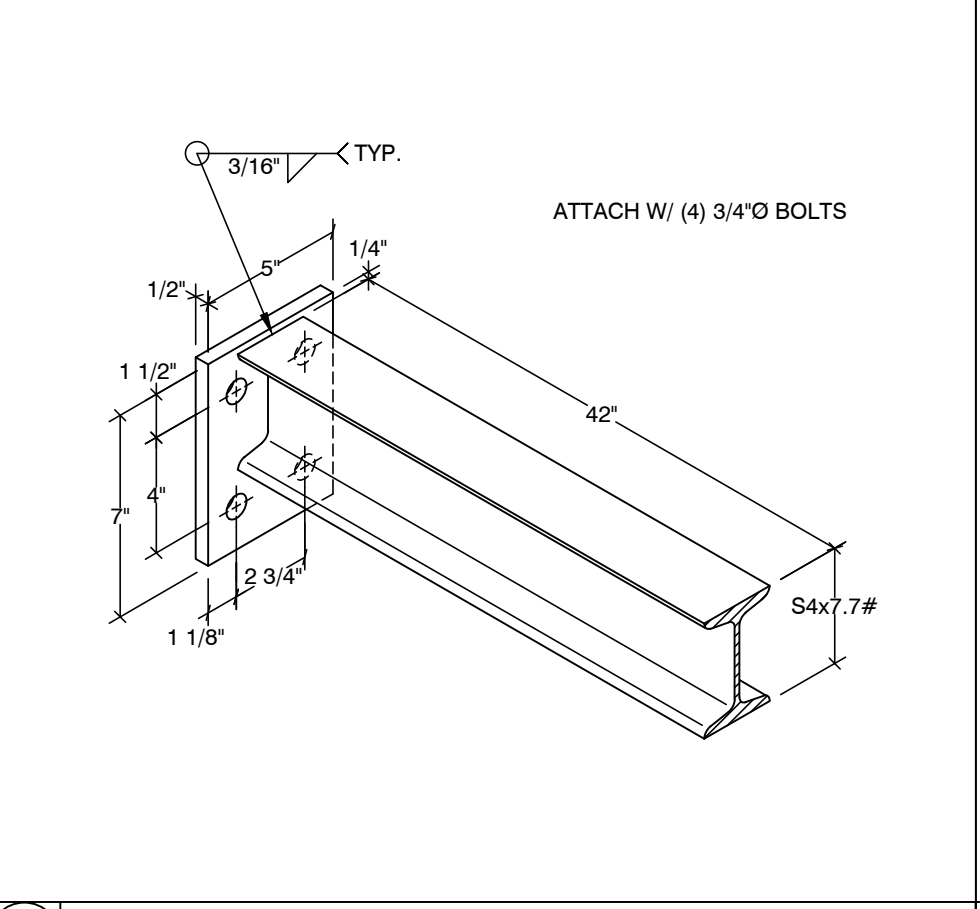
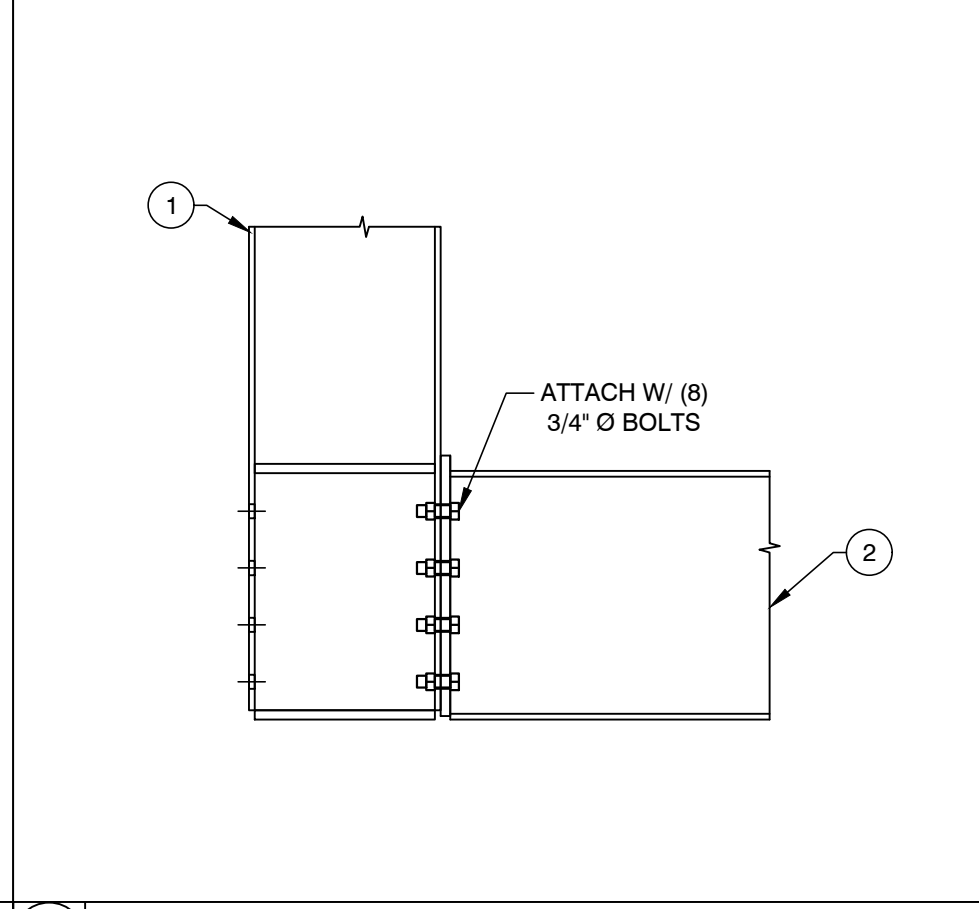
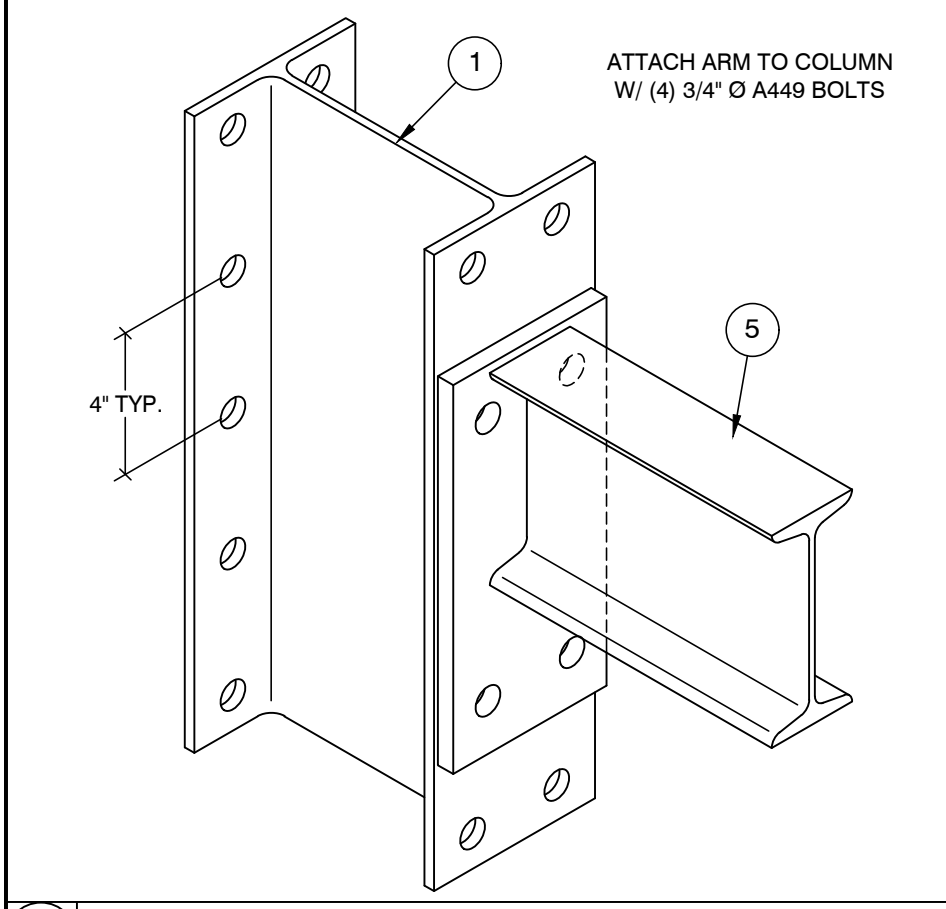
V-A TYPICAL BRACE TO COLUMN CONNECTION

1 COLUMN

2 BASE

3 ANCHOR

4A HORIZONTAL BRACE

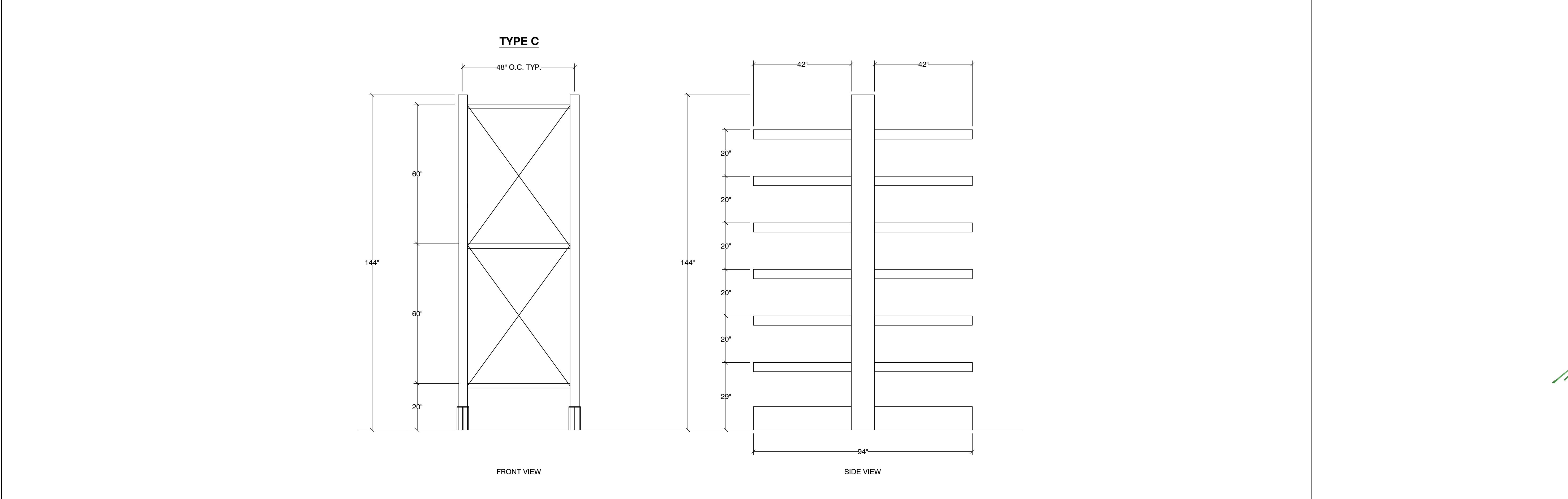


V-B TYPICAL ARM TO COLUMN CONNECTION

V-C TYPICAL BASE TO COLUMN CONNECTION

5 ARM

GENERAL CONFIGURATION



CANTILEVER RACK ELEVATIONS

RED DOT CORP. WA
 2504 EAST MAIN AVE
 PUYALLUP, WA 98372

REV.	DATE	BY	DESCRIPTION

REV.	DATE	BY	DESCRIPTION

SEIZMIC
 EST. 1985
 SEIZMIC ENGINEERING, INC.
 1130 E. Cypress St.
 Covina, California 91724
 Tel. (909)869-0989

DRAWN BY: B.G. / A.N.
 DATE: 10/13/22
 LAST REV BY:
 REV DATE:
 TYPE: HMH
 SCALE: N.T.S.
 APRVD BY: SAL E. FATEEN



DESCRIPTION:
CANTILEVER RACK DETAILS (22-2726-B)

DRAWING NUMBER:
SS7.2