

Where a curb exists, the lateral offset of all vertical obstructions shall be a minimum of 1.5' from the face of the curb to the face of the vertical obstruction and a minimum of 3' at intersections. Where no curb exists, the lateral offset of all vertical obstructions shall be a minimum of 4' measured from the edge of pavement to the face of the obstruction.

Anchored guy wire shall be installed or retrofit with a minimum 7'-feet of overhead sidewalk clearance. The guy-wire shall not obstruct access to any property or to a public or private utility facility. The guy wire shall be anchored in the public right-of-way or within a private utility easement.

City of Puyallup
Development & Permitting Services
ISSUED PERMIT

Building

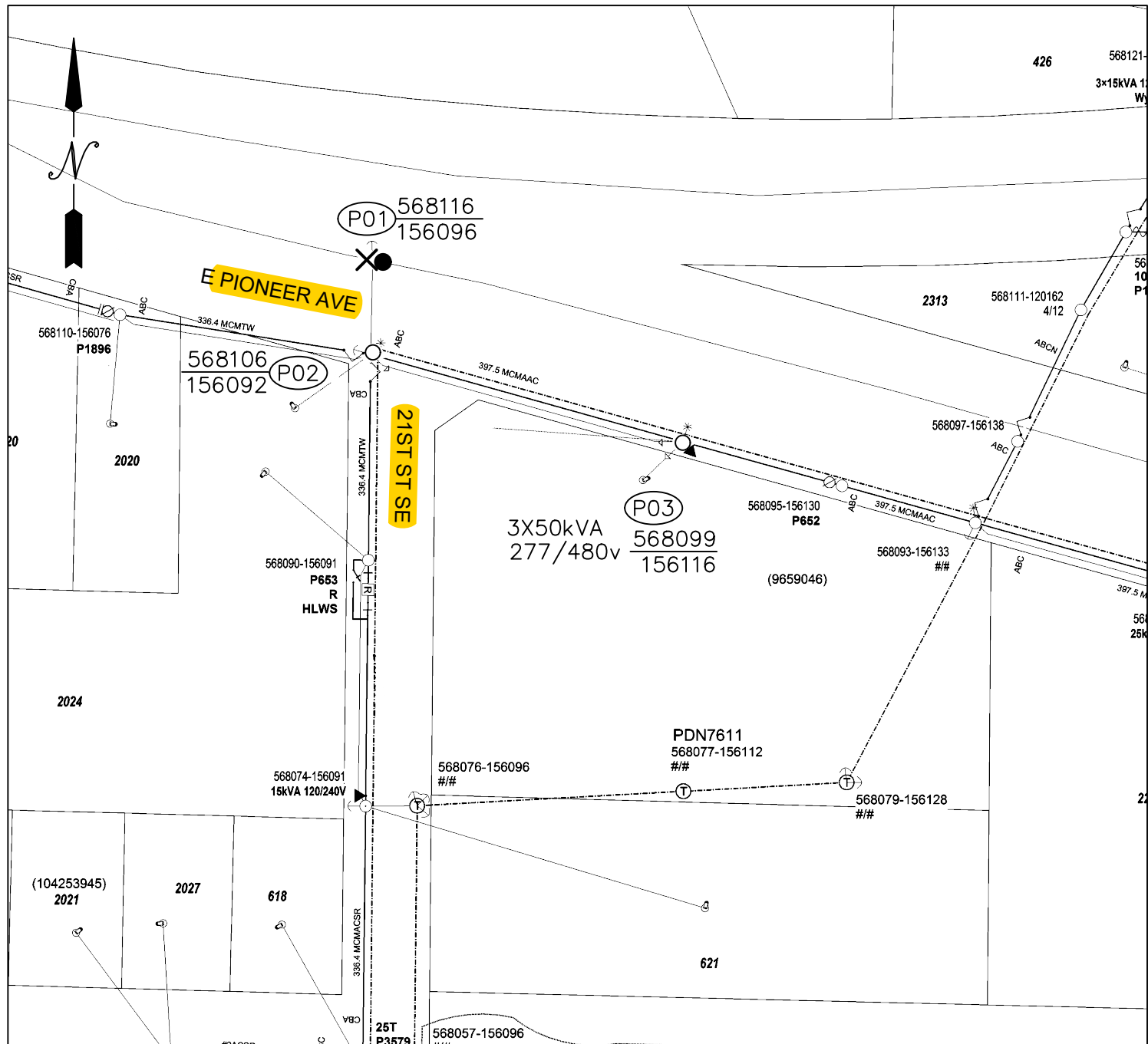
Planning

Engineering

Public Works

Fire

Traffic



SITE PLAN: P01-P03
SCALE: 1:100

SITE SPECIFIC NOTES

- P01 (568116-156096)**
- REPLACE EXIST 55' CL2 POLE
 - INST NEW 35' CL1 (6010.1000 PD351)
 - UPGRADE GUYING PER TRANSMISSION WO# 111028265
 - TRANSFER EXIST SPAN GUYS SOUTH
 - PSE TO REMOVE OLD POLE

- P02 (568106-156092)**
- RAISE DISTRIBUTION UNDERBUILD 2'
 - REPLACE EXIST S/L
 - INST NEW 6" S/L (6060.1000 AEWN06)
 - CREW TO MAINTAIN SAFETY SPACE CLEARANCES
 - RETENTION NEUT. APPROX. 220' TO P03
 - CREW TO MAINTAIN 30" MIDSPAN CLEARANCE

EROSION & SEDIMENT CONTROL REQUIREMENTS

EROSION & SEDIMENT CONTROL SHALL BE PER PSE STANDARD PRACTICE 0150.3200 TECHNIQUES FOR TEMPORARY EROSION & SEDIMENT CONTROL & ANY ADDITIONAL LOCAL JURISDICTION REQUIREMENTS. (LOCAL JURISDICTIONS MAY HAVE ADDITIONAL REQUIREMENTS INCLUDING NOTES DETAILING WHERE EROSION OR SEDIMENT CONTROL STRUCTURES ARE TO BE INSTALLED, CROSS SECTION DETAILS OF THE TYPICAL EROSION STRUCTURES, & SPECIAL REQUIREMENTS FOR WORK IN SENSITIVE AREAS.)

POWER GENERAL NOTES

- All materials to be installed in accordance with Puget Sound Energy's (PSE) standards. Any deviation from this work sketch must be AUTHORIZED by Potelco's Project Manager and NOTED on the Foremans' Copy.
- All switching arrangements and/or outage arrangements are to be made with the Project Manager at least three (3) working days in advance.
- Contact the Utilities Underground Location Center (1-800-424-5555) at least 48 hours prior to commencing work to get the underground facilities located.
- All work is to be done in accordance with local municipal and county permit requirements as applicable.
- Inclement weather conditions may cause delays in construction times and dates.

