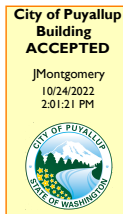
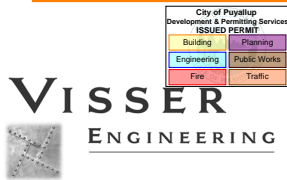


PRCTI20221460



THE APPROVED CONSTRUCTION PLANS, DOCUMENTS AND ALL ENGINEERING MUST BE POSTED ON THE JOB AT ALL INSPECTIONS IN A VISIBLE AND READILY ACCESSIBLE LOCATION.

FULL SIZED LEDGIBLE COLOR PLANS ARE REQUIRED TO BE PROVIDED BY THE PERMITEE ON SITE FOR INSPECTION

STRUCTURAL CALCULATIONS

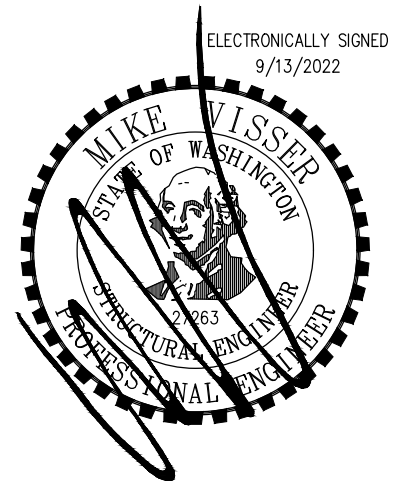
Project: Cheers Puyallup – Retrofit Design
3811 9th St SW, Puyallup, WA 98373

Project No.: 22-074

Client: Ali Kashi
3509 Carpenter Road SE
Lacey, WA 98503

By: Jonathon Waldrip, P.E.
Mike Visser, P.E., S.E.

Date: September 13, 2022



For Additional Information/Analysis
Reference Building Analysis Calculations
Dated September 2, 2022



CALCULATION SHEET

Title: Chord Connection DetailProject: 22074 - Cheers PuyallupClient: KoshiDate: 9/12/2022

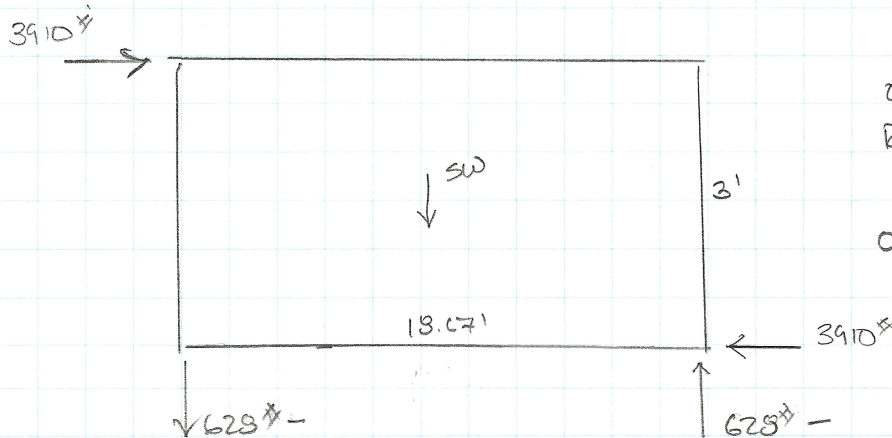
Page: _____

CHORD CONNECTION DETAIL

$$\text{MAX CHORD/COLLECTOR FORCE} = 3910^{\#} (0.7E)$$

To Transfer $3910^{\#}$ w/ sheathing + nailing no greater than
 SW No. ∇ (240 pif) w/ $3/8"$ APA rated Sheathing + 0.131" Nails @ 6-12 spacing.

$$3910^{\#} / 240 \text{ pif} = 16.3' \rightarrow \text{Use } 18'-8" \text{ FOR O.T.}$$



$$\text{O.T.M} = 3910^{\#}(3') = 11,730^{\#}\text{-ft}$$

$$\text{R.M.} = [8(12) + 15(2)] (18.67)^2 / 2$$

$$= 21,959^{\#}\text{-ft}$$

$$\text{O.B.R.M} = 13,175^{\#}\text{-ft} > 11,730^{\#}\text{-ft}$$

OK



CALCULATION SHEET

Title: Top PL Splice DetailProject: 22074 - Cheers PuyallupClient: KASHDate: 9/12/2022

Page: _____

TOP PL SPLICE DETAIL

- EX DRAWINGS STATE (15) 16d Nails between ea. splice
- Gen NOTES state DFP1 Top Plates as Typ in building

$$Z_{11} = 103^* / \text{Nail } (16) (15) = 2472^* @ \text{Typ Splice.}$$

- ∴ Identify locations where T/C or collector Forces are greater than 2472*

Collector Forces.

Grid 3: 14' → 78' + 47' → 55'

Grid 12: 40' → 72'

Grid A: 44' → 50'

Grid K: 32' → 51'

∴ See Collector Loads on Following Pages.

Chord Forces.

Grid 3/12: 16' → 73' → From ORE Moment Diagram

Grid A/K: NONE