

FIRE ALARM LEGEND

Device Legend	
[FACP]	Fire Alarm Control Panel
[FAA]	Fire Alarm Annunciator
[PS]	Power Supply
[S]	Smoke Detector
[F]	Pull Station
[R]	Relay Module
[T]	Tamper Switch
[JP]	Jockey Pump Controller
[X]	Wall Mount Strobe
[X]	Ceiling Mount Strobe
[X]	Wall Mount Horn Strobe
[X]	Ceiling Mount Horn Strobe
[H]	Mini Horn
[E]	Exterior Bell
[FP]	Fire Pump Controller
[WP]	Weather Proof
[VSW]	Sprinkler Valve Supervisory Switch
[VSW]	Sprinkler Flow Switch
[S]	Wall Mounted Smoke Detector
[S]	Non Addressable Heat Detector
[K]	Fire Fighter Phone
[HSC]	Hand Set Center
[SB]	Smoke Beam
[MM]	Mini Module

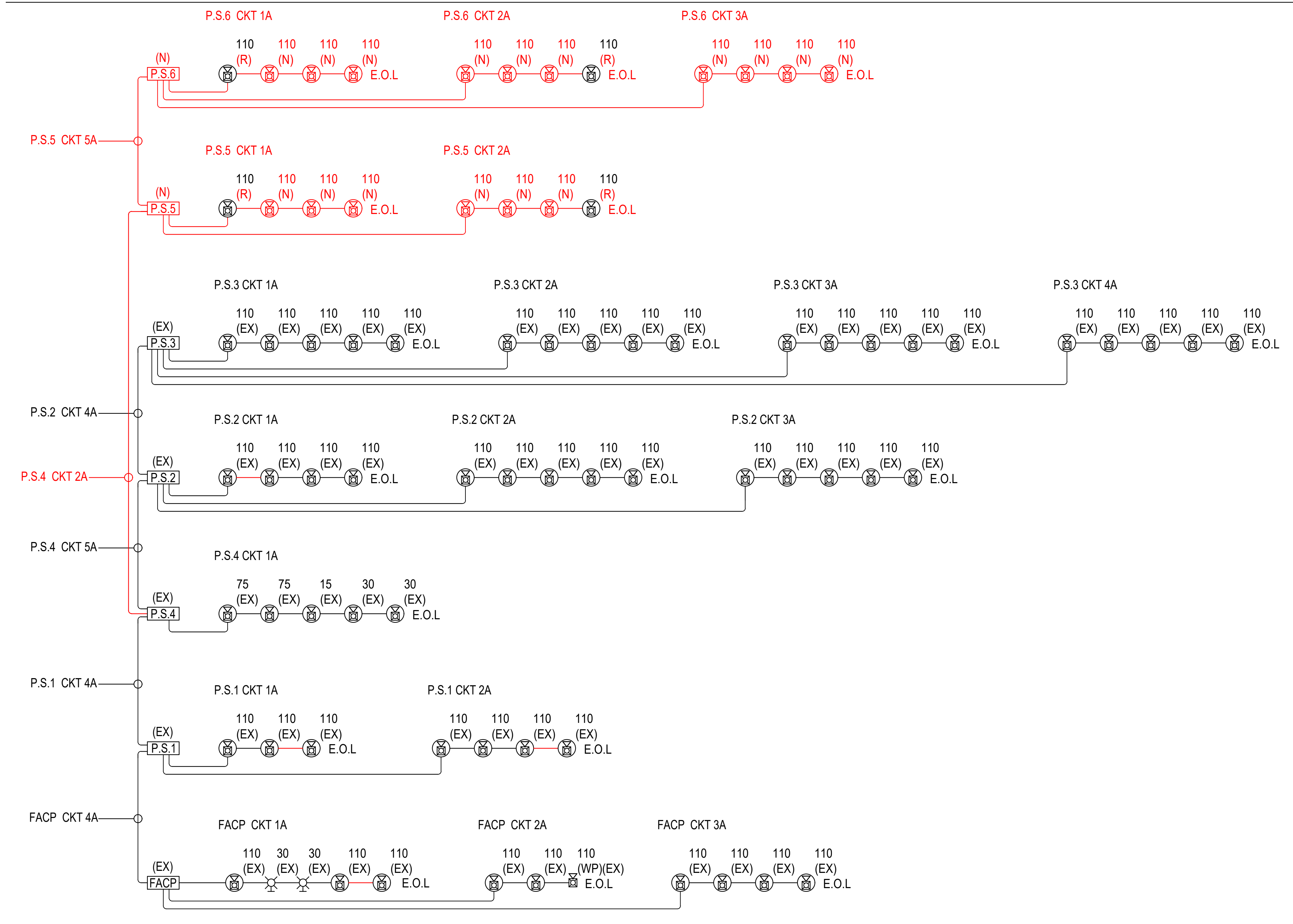
Wiring Legend	
#	Denotes Ckt. Number
A	14 Gauge 2 Conductor FPLP
B	18 Gauge 2 Conductor FPLP
C	16 Gauge 4 Conductor FPLP

Typical Mounting Height	
[FACP]	60" To ϕ AFF
[FAA]	60" To ϕ AFF
[F]	48" To ϕ AFF
[R]	48" To ϕ AFF
[X]	80" To ϕ AFF
[X]	80" To ϕ AFF
[PS]	60" To ϕ AFF
[S]	4"-12"(MAX) To ϕ From Ceiling
[K]	8'-10"(MAX) To ϕ From Floor

- Notes**
- -
 -
 -

DRAWING INDEX

- FA1 COVER PAGE
- FA2 BATTERY CALCULATIONS
- FA3 WAREHOUSE NAC LAYOUT
- FA4 WAREHOUSE SLC LAYOUT



CONTROL LINE IDENTIFICATION	NOTIFICATION	SMK
PULL STATION		
WATERFLOW		
SPRINKLER VALVE TAMPER		
FACFLOW BATTERY		
FACFAC FAILURE		
IRVAC DETECT DETECTOR		
OPEN CIRCUIT		
GROUND FAULT		
WIRE TO WIRE SHORT		
PHONE LINE LOSS		
PUMP MONITORING		

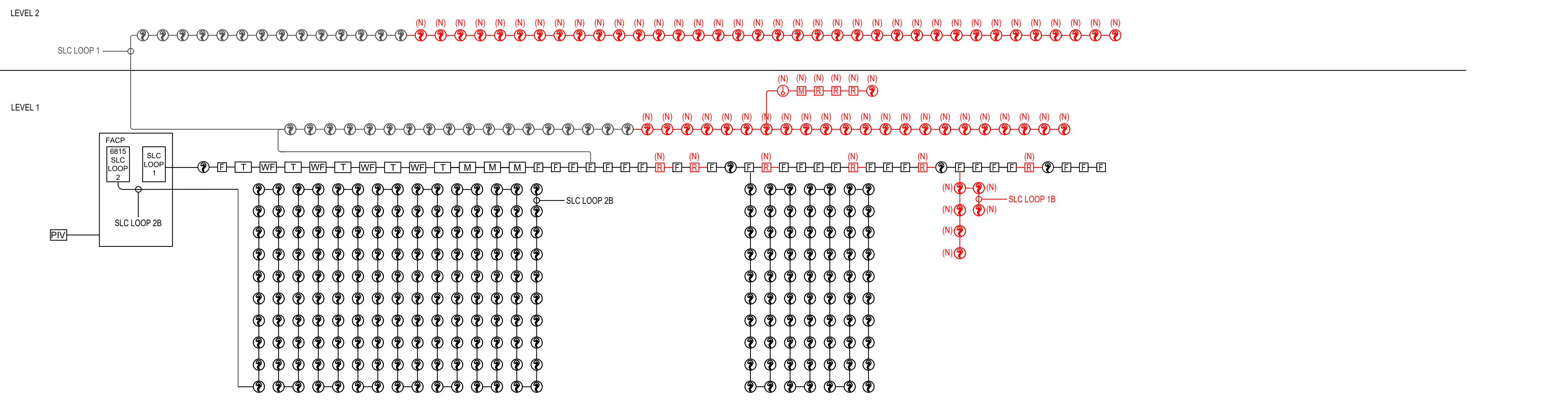
2 OPERATIONS MATRIX
N.T.S.

1 FIRE ALARM NAC RISER DIAGRAM
N.T.S.

RED DOT TI

2504 E. MAIN AVENUE
PUYALLUP, WA 98372

Revisions:	
Rev	Description
1	SHOP



1 FIRE ALARM SLC RISER DIAGRAM
N.T.S

2 FIRE ALARM BATTERY CALCULATIONS
N.T.S

OLSEN ELECTRIC INC.
 Kevin Olsen
 Level III, ET (Engineering Technician)
 Certification # 145198 Exp. 7/01/2023

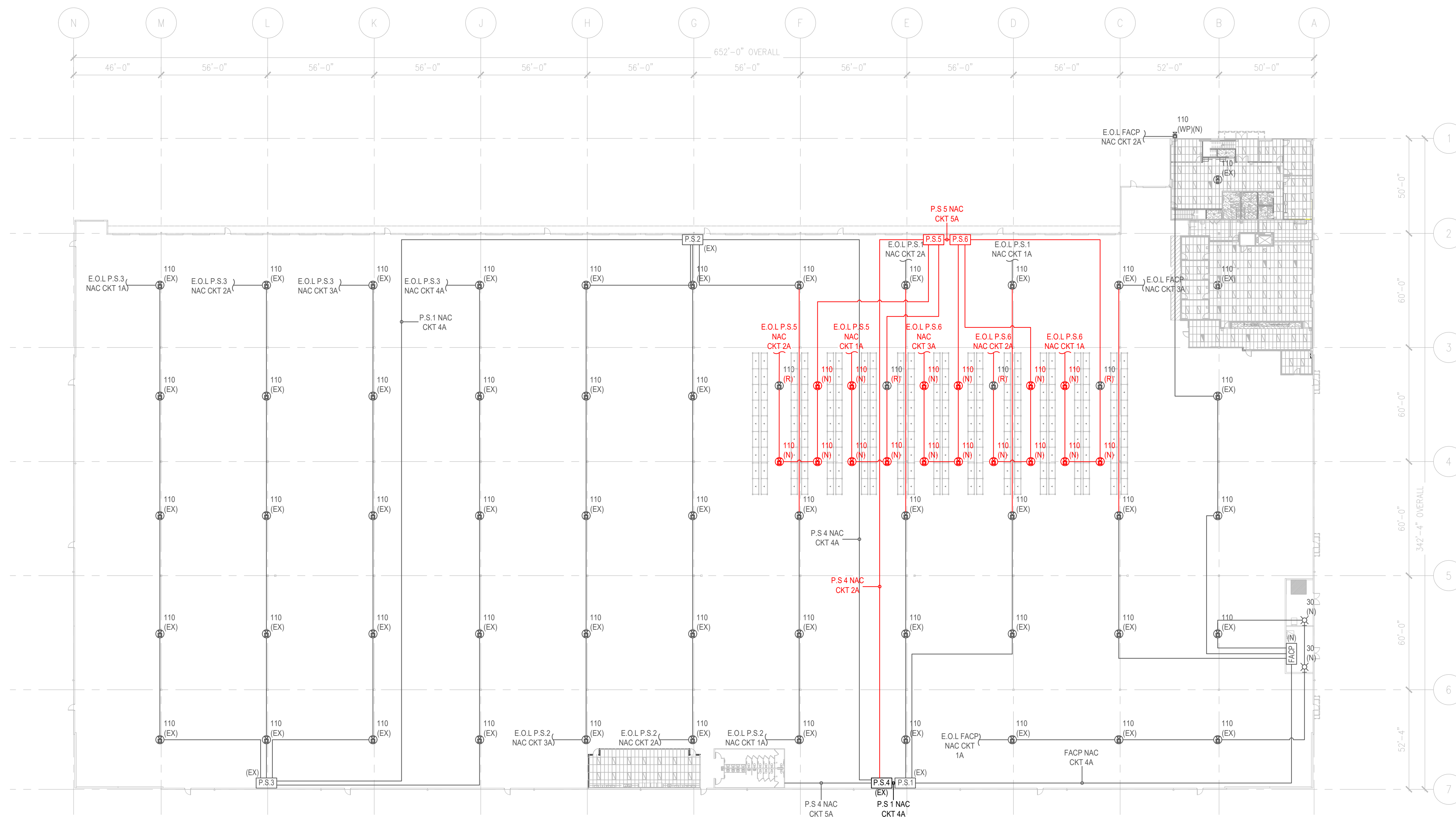
OLSEN ELECTRIC INC.
 Commercial ~ Industrial
 325 Washington Ave S #91
 Kent, WA 98032
 Phone (253)-872-1905
 Fax (253)-269-0268

RED DOT TI
 2504 E. MAIN AVENUE
 PUYALLUP, WA 98372

Revisions:

Rev	Date	By	Description
1	1/18/23	RS	SHOP

1/6/2022
 Drawn By: RS
 Sheet Number: FA2



1 FIRE ALARM WAREHOUSE NAC LAYOUT
 1/32" = 1'-0"

NOTE: DEVICES IN BLACK WITH (EX) ARE EXISTING DEVICES. DEVICES NOTED WITH (R) ARE DEVICES THAT WILL BE RELOCATED

OLSEN
ELECTRIC INC.

Commercial ~ Industrial
 Phone (253)-872-1905 325 Washington Ave S #91
 Fax (253)-269-0268 Kent, WA 98032

RED DOT TI

2504 E. MAIN AVENUE
 PUYALLUP, WA 98372

Revisions:

Rev	Date	By	Description
1	1/18/23	RS	SHOP

1/6/2023

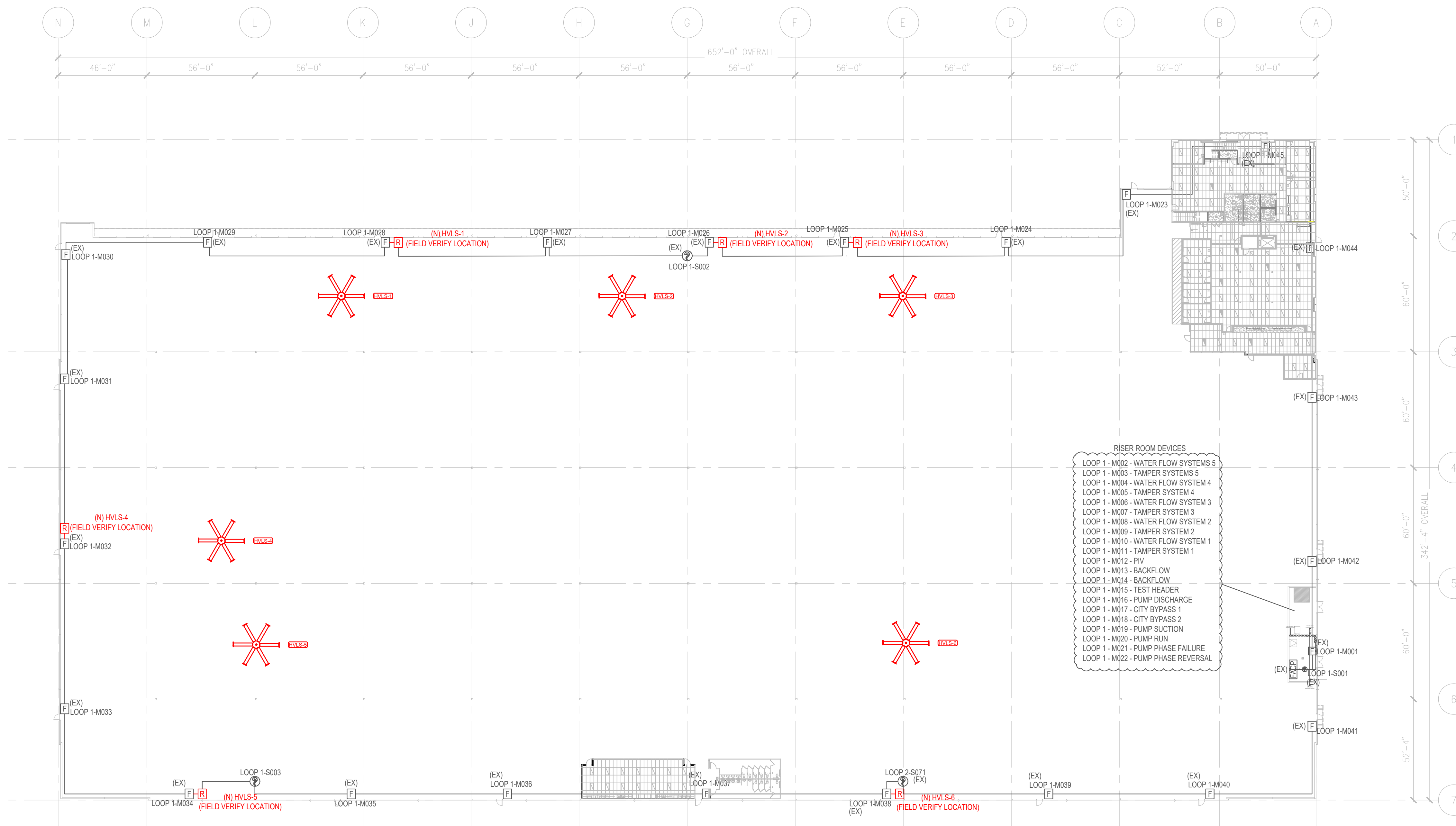
Drawn By: RS

Sheet Number:

FA3

OLSEN
ELECTRIC INC.

Kevin Olsen
 Level III, ET (Engineering Technician)
 Certification # 145198 Exp. 7/01/2023



- RISER ROOM DEVICES**
- LOOP 1 - M002 - WATER FLOW SYSTEMS 5
 - LOOP 1 - M003 - TAMPER SYSTEMS 5
 - LOOP 1 - M004 - WATER FLOW SYSTEM 4
 - LOOP 1 - M005 - TAMPER SYSTEM 4
 - LOOP 1 - M006 - WATER FLOW SYSTEM 3
 - LOOP 1 - M007 - TAMPER SYSTEM 3
 - LOOP 1 - M008 - WATER FLOW SYSTEM 2
 - LOOP 1 - M009 - TAMPER SYSTEM 2
 - LOOP 1 - M010 - WATER FLOW SYSTEM 1
 - LOOP 1 - M011 - TAMPER SYSTEM 1
 - LOOP 1 - M012 - PIV
 - LOOP 1 - M013 - BACKFLOW
 - LOOP 1 - M014 - BACKFLOW
 - LOOP 1 - M015 - TEST HEADER
 - LOOP 1 - M016 - PUMP DISCHARGE
 - LOOP 1 - M017 - CITY BYPASS 1
 - LOOP 1 - M018 - CITY BYPASS 2
 - LOOP 1 - M019 - PUMP SUCTION
 - LOOP 1 - M020 - PUMP RUN
 - LOOP 1 - M021 - PUMP PHASE FAILURE
 - LOOP 1 - M022 - PUMP PHASE REVERSAL

1 FIRE ALARM WAREHOUSE NAC LAYOUT
1/32" = 1'-0"

NOTE: DEVICES IN BLACK WITH (EX) ARE EXISTING DEVICES. DEVICES NOTED WITH (R) ARE DEVICES THAT WILL BE RELOCATED

OLSEN ELECTRIC INC.
Kevin Olsen
Level III, ET (Engineering Technician)
Certification # 145198 Exp. 7/01/2023

Rev	Date	By	Description
1	1/18/23	RS	SHOP

Revisions:

1/6/2023
Drawn By: RS
Sheet Number: FA4