

## FIRE ALARM LEGEND

Device Legend	
[FACP]	Fire Alarm Control Panel
[FAA]	Fire Alarm Annunciator
[PS]	Power Supply
[S]	Smoke Detector
[F]	Pull Station
[R]	Relay Module
[T]	Tamper Switch
[JP]	Jockey Pump Controller
[X]	Wall Mount Strobe
[X]	Ceiling Mount Strobe
[X]	Wall Mount Horn Strobe
[X]	Ceiling Mount Horn Strobe
[H]	Mini Horn
[B]	Exterior Bell
[FP]	Fire Pump Controller
[WP]	Weather Proof
[V]	Sprinkler Valve Supervisory Switch
[W]	Sprinkler Flow Switch
[S]	Wall Mounted Smoke Detector
[H]	Non Addressable Heat Detector
[K]	Fire Fighter Phone
[HSC]	Hand Set Center
[SB]	Smoke Beam
[MM]	Mini Module

Wiring Legend	
#	Denotes Ckt. Number
A	14 Gauge 2 Conductor FPLP
B	18 Gauge 2 Conductor FPLP
C	16 Gauge 4 Conductor FPLP

Typical Mounting Height	
[FACP]	60" To $\phi$ AFF
[FAA]	60" To $\phi$ AFF
[F]	46" To $\phi$ AFF
[R]	48" To $\phi$ AFF
[X]	80" To $\phi$ AFF
[X]	80" To $\phi$ AFF
[PS]	60" To $\phi$ AFF
[S]	4"-12"(MAX) To $\phi$ From Ceiling
[X]	8'-10"(MAX) To $\phi$ From Floor
[WP]	

Notes	
1.	
2.	
3.	
4.	

## DRAWING INDEX

FA1	COVER PAGE
FA2	BATTERY CALCULATIONS
FA3	WAREHOUSE NAC LAYOUT
FA4	WAREHOUSE SLC LAYOUT



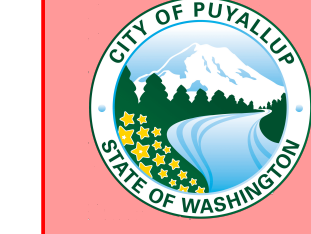
CONTROL LINE INDICATOR	NOTIFICATION	SMK
PULL STATION		
WATERFLOW		
SPRINKLER VALVE TAMPER		
FAC/PC FAILURE		
IRVAC DETECT DETECTOR		
OPEN CIRCUIT		
GROUND FAULT		
WIRE TO WIRE SHORT		
PHONE LINE LOSS		
PUMP MONITORING		

2 OPERATIONS MATRIX  
N.T.S.

**City of Puyallup Fire REVIEWED FOR COMPLIANCE**  
DDrake  
01/30/2023  
8:45:37 AM

THE APPROVED CONSTRUCTION PLANS AND ALL ENGINEERING MUST BE POSTED ON THE JOB AT ALL INSPECTIONS IN A VISIBLE AND READILY ACCESSIBLE LOCATION.

Approval of submitted plans is not an approval of omissions or oversight by this office or noncompliance with any applicable regulations of local government. The contractor is responsible for making sure that the building complies with all applicable building codes and regulations of the local government.



**City of Puyallup Development & Permitting Services ISSUED PERMIT**

Building	Planning
Engineering	Public Works
Fire	Traffic

1 FIRE ALARM NAC RISER DIAGRAM  
N.T.S.

**OLSEN ELECTRIC INC.**  
 Commercial ~ Industrial  
 325 Washington Ave S #91  
 Kent, WA 98032  
 Phone (253)-872-1905  
 Fax (253)-269-0268

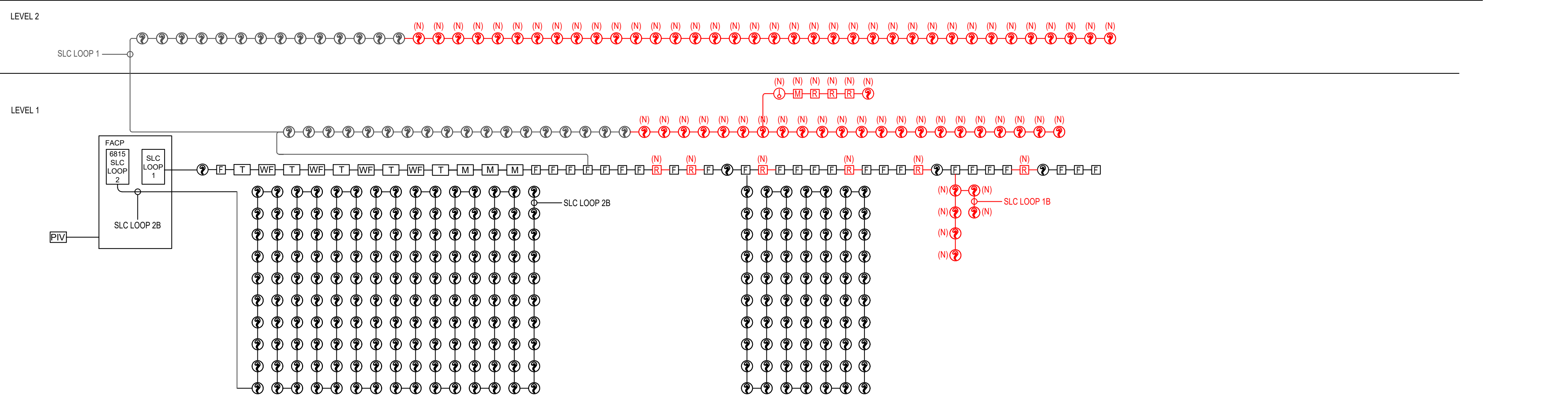
**RED DOT TI**  
 2504 E. MAIN AVENUE  
 PUYALLUP, WA 98372

Revisions:  

Rev	Date	By	Description
1	1/18/23	RS	SHOP

1/6/2023  
 Drawn By: RS  
 Sheet Number: FA1

**OLSEN ELECTRIC INC.**  
 Kevin Olsen  
 Level III, ET (Engineering Technician)  
 Certification # 145198 Exp. 7/01/2023



1 FIRE ALARM SLC RISER DIAGRAM  
N.T.S

2 FIRE ALARM BATTERY CALCULATIONS  
N.T.S

City of Puyallup  
Development & Permitting Services  
**ISSUED PERMIT**

Building	Planning
Engineering	Public Works
Fire	Traffic

**OLSEN ELECTRIC INC.**  
Kevin Olsen  
Level III, ET (Engineering Technician)  
Certification # 145198 Exp. 7/01/2023

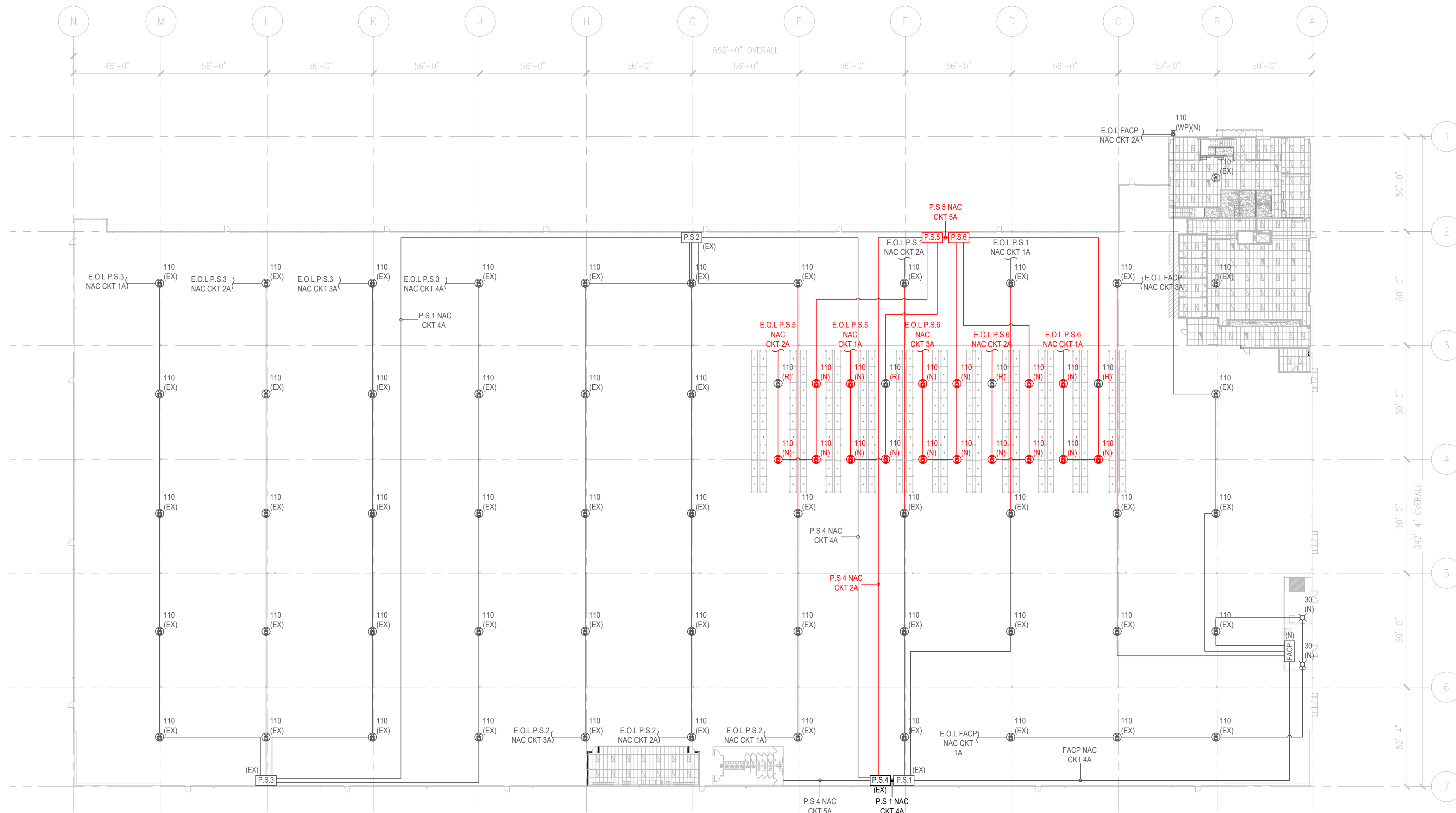
**OLSEN ELECTRIC INC.**  
Commercial ~ Industrial  
325 Washington Ave S #91  
Kent, WA 98032  
Phone (253)-872-1905  
Fax (253)-269-0268

**RED DOT TI**  
2504 E. MAIN AVENUE  
PUYALLUP, WA 98372

Revisions:

Rev	Date	By	Description
1	1/18/23	RS	SHOP

1/6/2022  
Drawn By: RS  
Sheet Number: FA2



1 FIRE ALARM WAREHOUSE NAC LAYOUT  
1/32" = 1'-0"

NOTE: DEVICES IN BLACK WITH (EX) ARE EXISTING DEVICES. DEVICES NOTED WITH (R) ARE DEVICES THAT WILL BE RELOCATED

City of Puyallup Development & Permitting Services ISSUED PERMIT	
Building	Planning
Engineering	Public Works
Fire	Traffic

**OLSEN**  
**ELECTRIC INC.**  
Kevin Olsen  
Level III, ET (Engineering Technician)  
Certification # 145198 Exp. 7/01/2023

**RED DOT TI**  
2504 E. MAIN AVENUE  
PUYALLUP, WA 98372

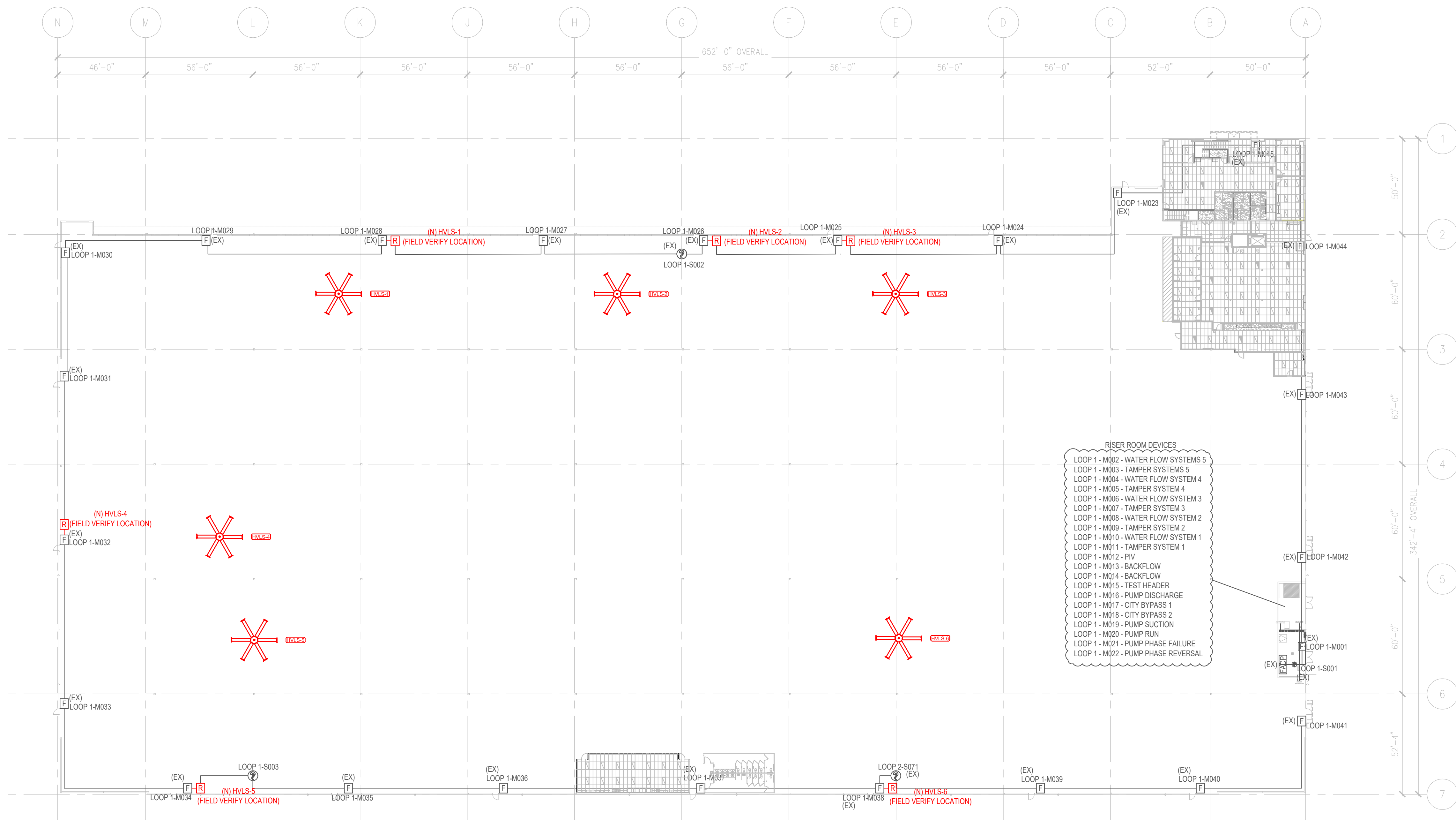
**OLSEN**  
**ELECTRIC INC.**  
Commercial ~ Industrial  
325 Washington Ave S #91  
Kent, WA 98032  
Phone (253)-872-1905  
Fax (253)-269-0268

Rev	Date	By	Description
1	1/18/23	RS	SHOP

Revisions:

Rev	Date	By	Description

1/6/2023  
Drawn By: RS  
Sheet Number: FA3



1 FIRE ALARM WAREHOUSE NAC LAYOUT  
1/32" = 1'-0"

NOTE: DEVICES IN BLACK WITH (EX) ARE EXISTING DEVICES. DEVICES NOTED WITH (R) ARE DEVICES THAT WILL BE RELOCATED

**City of Puyallup**  
Development & Permitting Services  
**ISSUED PERMIT**

Building	Planning
Engineering	Public Works
Fire	Traffic

**OLSEN**  
**ELECTRIC INC.**  
Kevin Olsen  
Level III, ET (Engineering Technician)  
Certification # 145198 Exp. 7/01/2023

**RED DOT TI**  
2504 E. MAIN AVENUE  
PUYALLUP, WA 98372

**OLSEN**  
**ELECTRIC INC.**  
Commercial ~ Industrial  
325 Washington Ave S #91  
Kent, WA 98032  
Phone (253)-872-1905  
Fax (253)-269-0268

Revisions:

Rev	Date	By	Description
1	1/16/23	RS	SHOP

1/6/2023  
Drawn By: RS  
Sheet Number: FA4