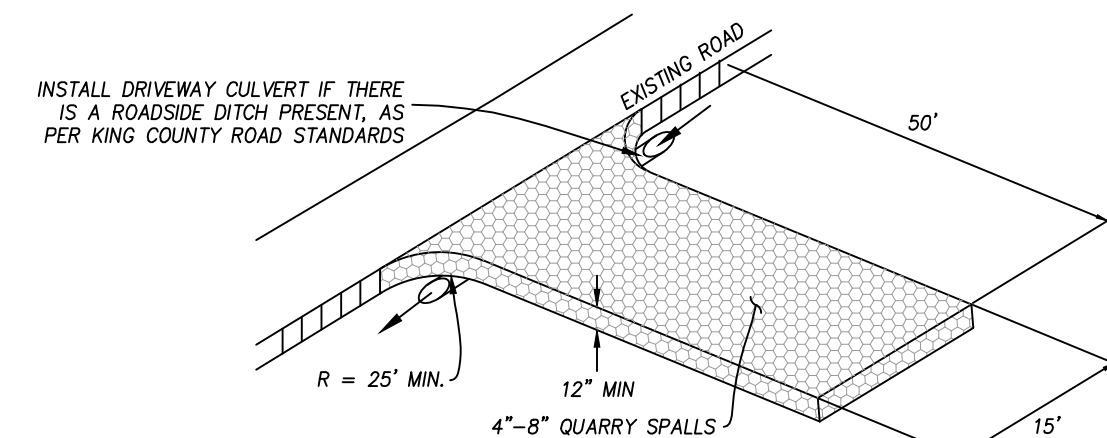
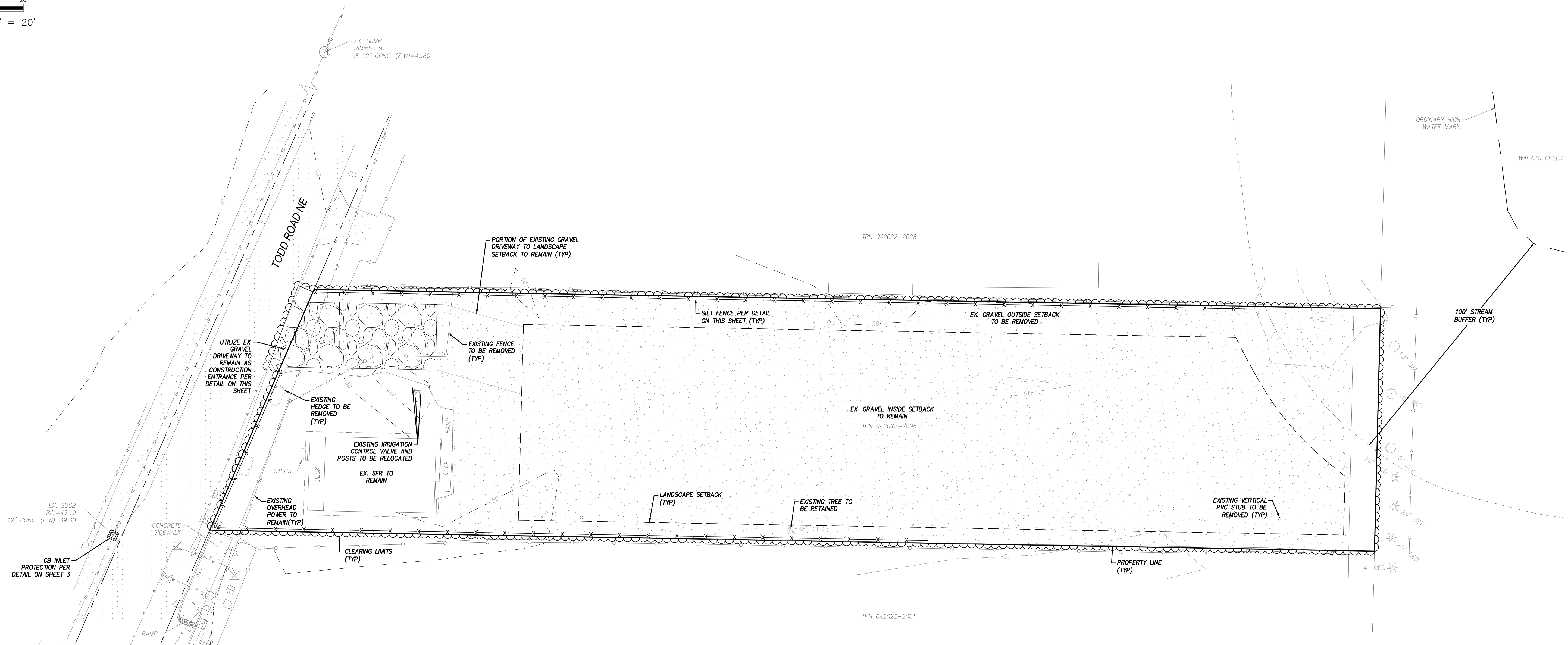


0 5 10 20
SCALE 1" = 20'

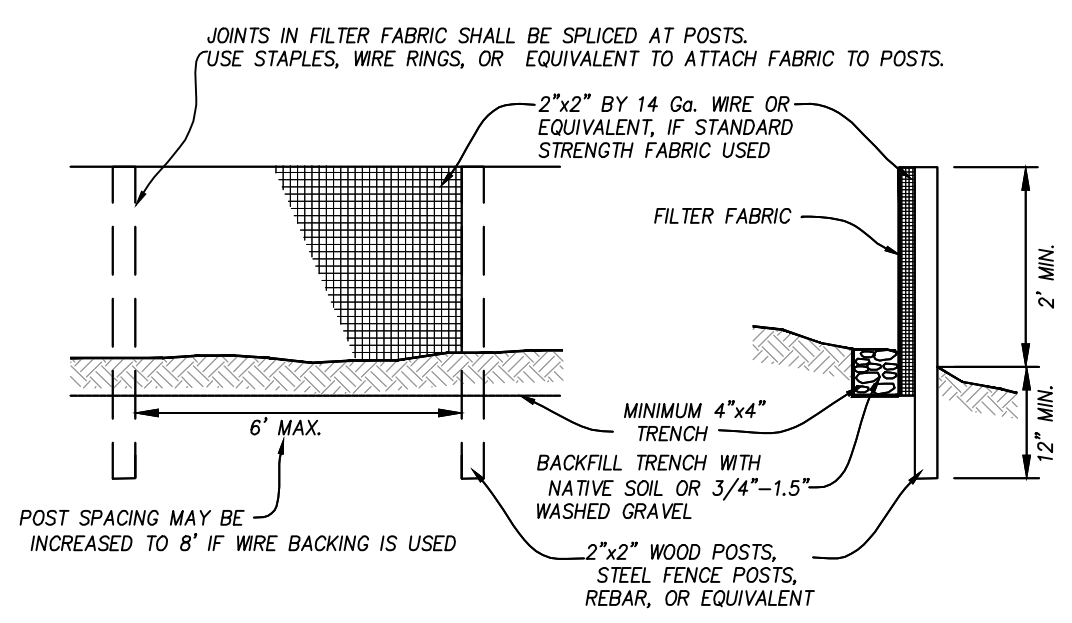
APL PROPERTIES

A PORTION OF THE NW 1/4 OF NW 1/4 OF SECTION 22, T. 20 N., R. 04 E., W.M.
CITY OF PUYALLUP, PIERCE COUNTY, STATE OF WASHINGTON



- MAINTENANCE PER 2016 KCSWDM**
1. QUARRY SPALLS (OR HOG FUEL) SHALL BE ADDED IF THE PAD IS NO LONGER IN ACCORDANCE WITH THE SPECIFICATIONS.
 2. IF THE ENTRANCE IS NOT PREVENTING SEDIMENT FROM BEING TRACKED ONTO PAVEMENT, THEN ALTERNATIVE MEASURES TO KEEP THE STREETS FREE OF SEDIMENT SHALL BE USED. THIS MAY INCLUDE STREET SWEEPING, AN INCREASE IN THE DIMENSIONS OF THE ENTRANCE, OR THE INSTALLATION OF A WHEEL WASH. IF WASHING IS USED, IT SHALL BE DONE ON AN AREA COVERED WITH CRUSHED ROCK AND WASH WATER SHALL DRAIN TO A SEDIMENT TRAP OR POND.
 3. ANY SEDIMENT THAT IS TRACKED ONTO PAVEMENT SHALL BE REMOVED IMMEDIATELY BY SWEEPING. THE SEDIMENT COLLECTED BY SWEEPING SHALL BE REMOVED OR STABILIZED ON SITE. THE PAVEMENT SHALL NOT BE CLEANED BY WASHING DOWN THE STREET, EXCEPT WHEN SWEEPING IS INEFFECTIVE AND THERE IS A THREAT TO PUBLIC SAFETY. IF IT IS NECESSARY TO WASH THE STREETS, A SMALL SUMP MUST BE CONSTRUCTED. THE SEDIMENT WOULD THEN BE WASHED INTO THE SUMP WHERE IT CAN BE CONTROLLED. WASH WATER MUST BE PUMPED BACK ONTO THE SITE AND CAN NOT DISCHARGE TO SYSTEMS TRIBUTARY TO SURFACE WATERS.
 4. ANY QUARRY SPALLS THAT ARE LOOSENED FROM THE PAD AND END UP ON THE ROADWAY SHALL BE REMOVED IMMEDIATELY.
 5. IF VEHICLES ARE ENTERING OR EXITING THE SITE AT POINTS OTHER THAN THE CONSTRUCTION ENTRANCE(S), FENCING SHALL BE INSTALLED TO CONTROL TRAFFIC.

CONSTRUCTION ENTRANCE DETAIL
NTS



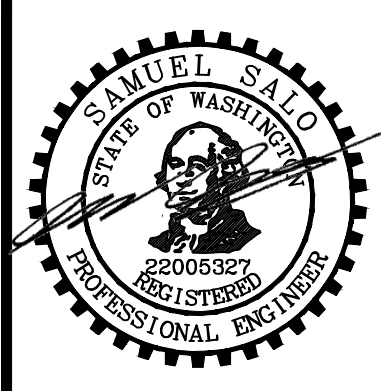
- SILT FENCE MAINTENANCE PER 2016 KCSWDM**
1. ANY DAMAGE SHALL BE REPAIRED IMMEDIATELY.
 2. IF CONCENTRATED FLOWS ARE EVIDENT UPHILL OF THE FENCE, THEY MUST BE INTERCEPTED AND CONVEYED TO A SEDIMENT TRAP OR POND.
 3. IT IS IMPORTANT TO CHECK THE UPHILL SIDE OF THE FENCE FOR SIGNS OF THE FENCE CLOGGING AND ACTING AS A BARRIER TO FLOW AND THEN CAUSING CHANNELIZATION OF FLOWS PARALLEL TO THE FENCE. IF THIS OCCURS, REPLACE THE FENCE OR REMOVE THE TRAPPED SEDIMENT.
 4. SEDIMENT MUST BE REMOVED WHEN THE SEDIMENT IS 6 INCHES HIGH.
 5. IF THE FILTER FABRIC (GEOTEXTILE) HAS DETERIORATED DUE TO ULTRAVIOLET BREAKDOWN, IT SHALL BE REPLACED.

SILT FENCE DETAIL
NTS

SURVEY LEGEND:

- WATER VALVE
- FIRE HYDRANT
- FIRE DEPARTMENT CONNECTION
- WATER VALVE BOX
- WATER METER
- IRRIGATION CONTROL VALVE
- STORM MANHOLE
- CATCH BASIN
- MAILBOX
- JUNCTION BOX
- LIGHT POLE
- SIGN POST
- POST
- UTILITY POLE
- GUY ANCHOR
- UNDERGROUND POWER LINE
- OVERHEAD POWER LINE
- STORM LINE
- WOOD FENCE (WF)
- CHAIN LINK FENCE (CLF)
- HEDGE LINE
- EVERGREEN TREE
- DECIDUOUS TREE
- CONCRETE
- ASPHALT
- GRAVEL

REVISIONS	DESCRIPTION	BY	DATE



1/10/2023

APL PROPERTIES
AMERICAN PRIDE LENDING, LLC
TESC PLAN & DETAILS



JOB NO.	21715
DATE	1/10/2023
SCALE	1"=20'
DESIGNED	SRS
DRAWN	PMS
CHECKED	CJA
APPROVED	CJA

SHEET 3 of 5



Know what's below.
Call before you dig.

FILENAME: J:\21715 - NW (PUYALLUP) ENGINEERING PLAN SHEETS\PRELIM\21715 - TESC.DWG