

THE APPROVED CONSTRUCTION PLANS, DOCUMENTS AND ALL ENGINEERING MUST BE POSTED ON THE JOB AT ALL INSPECTIONS IN A VISIBLE AND READILY ACCESSIBLE LOCATION.

FULL SIZED LEDGIBLE COLOR PLANS ARE REQUIRED TO BE PROVIDED BY THE PERMITEE ON SITE FOR INSPECTION

SUBMITTAL PACKAGE

THE KROGER COMPANY

FRED MEYER DISTRIBUTION CENTER

ROOF SECTIONS A2

2200 N Meridian

Puyallup, Wa

RMI # 023-100

PREPARED FOR

ROOF MANAGEMENT

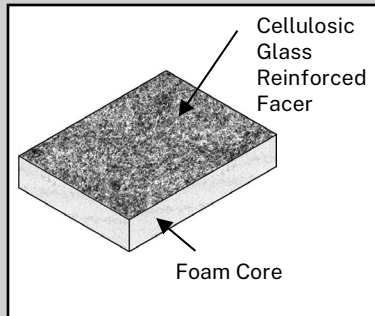
PO BOX 265

GOSHEN, KY 40026

PREPARED BY

WEATHERGUARD, INC

Technical Information Sheet



ISO 95+™ GL Insulation

Item Description

Flat and Tapered Polyiso Boards

Flat Boards: 4' x 4' (1.22 m x 1.22 m), 4' x 8' (1.22 m x 2.44 m)

Tapered Boards: 4' x 4' (1.22 m x 1.22 m)

Slope Range: 1/16" per foot (.5%) to 1/2" per foot (4%)

Thickness Range: 0.5" (12.7 mm) to 4.5" (114.3 mm)

Other options available include: 4' x 7'4" (1.22 m x 2.25 m).

Export cut for international shipments and scored ISO for metal retrofits.

Meets or exceeds performance requirements of ASTM C 1289, Type II, Class 1

Description

Elevate ISO 95+ GL flat and tapered roof insulation consists of a closed cell polyiso foam core laminated to a black glass reinforced mat facer on both major surfaces. Flat and tapered ISO 95+ GL insulation provides outstanding thermal performance on commercial roofing applications, while providing positive rooftop drainage to help eliminate ponding water when tapered ISO 95+ GL insulation is used.

All Elevate polyisocyanurate foam insulations use EPA accepted blowing agents. Elevate ISO 95+ GL incorporates a HCFC-free blowing agent that does not contribute to the depletion of the ozone layer (ODP-free).

Method of Application

1. Insulation shall be neatly fitted to all roof penetrations, projections and nailers.
2. No more insulation shall be installed than can be covered with membrane and completed before the end of each day's work or before the onset of inclement weather.
3. Elevate ISO 95+ GL board may be installed using:

- Elevate fasteners and plates

NOTE: For ballasted systems, the top layer of Elevate insulation may not be mechanically attached.

- Hot asphalt (requires a cover board)
- Elevate approved insulation adhesives
 - I.S.O. Twin Pack™
 - I.S.O.Stick™
 - Twin Jet
 - I.S.O. Spray™ R

Acceptable Immediate Substrates

- 3,000 psi Structural concrete (must be clean, dry, and properly cured)
- Steel deck (min 22 ga)
- Plywood and OSB (min 1/2")
- Lightweight concrete
- Gypsum deck (min 2")

NOTE: Please consult the Design Guides and QuickSpecs online at www.holcimelevate.com to review specific information regarding the assembly.

Storage

- Keep insulation dry at all times.
- Elevate insulation above the deck or ground.
- Cover insulation with waterproof tarps.

Precautions

- Polyiso foam will burn if exposed to a flame of sufficient heat and intensity. Keep away from heat, sparks, and open flames.
- Protect against dust that may be generated during installation.
- Refer to Safety Data Sheet (SDS) for additional information.
- Take care when transporting and handling Elevate insulation to avoid physical damage.

Specification Compliance

ASTM C1289, Type II, Class 1

UL Classified – UL1256

FM Class 1 Approved

Manufactured in an ISO 9001 Registered Facility

CAN/ULC-S704, Type 1, Class 3



LEED® Information

See Recycled Content in Typical Properties table.

Manufacturing Locations: Corsicana, TX

Jacksonville, FL

NOTE: Miami Dade Classified polyiso is only produced in the Jacksonville, FL facility.

***NOTE:** LEED® is a registered trademark of the U.S. Green Building Council.

NOTE: LEED® is a registered trademark of the U.S. Green Building Council

Typical Properties (Meets ASTM C 1289, Type II, Class 1)

Property	ASTM Test Method	Elevate Typical Performance
Compressive Strength	D1621	Grade 2: 20 psi (138 kPa) Grade 3: 25 psi (172 kPa) *
Density	D1622	2 pcf (32 kg/m ³)
Dimensional Stability	D2126	<2%
Moisture Vapor Transmission	E96	<1 perm (<57.5 ng/(Pa·s·m ²))
Water Absorption	C209	<1% by volume
Service Temperature	---	-100 to 250 °F (-73 to 121 °C)
Flame Spread	E84	Index 50
Smoke Development	E84	Index 160 - 180

*25 psi (172 kPa) available upon request.

Product Information

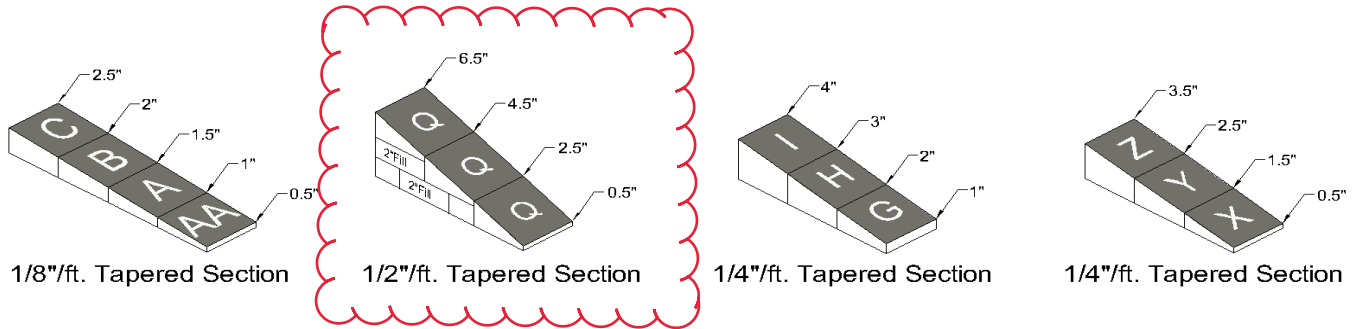
Thickness*		R-Value	Max Flute Span		Approximate Recycled Content		
inches	mm	**	inches	mm	Post-Consumer	Post Industrial	Total
0.5	12.70	2.9	1.50	38.10	52%	15%	67%
1.0	25.40	5.7	2.62	66.67	37%	15%	52%
1.1	27.94	6.3	2.62	66.67	36%	15%	51%
1.2	30.48	6.8	2.62	66.67	34%	15%	49%
1.3	33.02	7.4	3.67	93.34	32%	15%	47%
1.4	35.56	8.0	3.67	93.34	30%	15%	45%
1.5	38.10	8.6	4.37	111.12	29%	15%	44%
1.6	40.64	9.1	4.37	111.12	27%	15%	42%
1.7	43.18	9.7	4.37	111.12	26%	15%	41%
1.75	44.45	10.0	4.37	111.12	26%	15%	41%
1.8	45.72	10.3	4.37	111.12	25%	15%	40%
1.9	48.26	10.8	4.37	111.12	24%	15%	39%
2.0	50.80	11.4	4.37	111.12	24%	15%	39%
2.1	53.34	12.0	4.37	111.12	22%	15%	37%
2.2	55.88	12.6	4.37	111.12	21%	15%	36%
2.25	57.15	12.9	4.37	111.12	21%	15%	36%
2.3	58.42	13.2	4.37	111.12	21%	15%	36%
2.4	60.96	13.8	4.37	111.12	20%	15%	35%
2.5	63.50	14.4	4.37	111.12	20%	15%	35%
2.6	66.04	15.0	4.37	111.12	19%	15%	34%
2.7	68.58	15.6	4.37	111.12	18%	15%	33%
2.75	69.85	15.9	4.37	111.12	18%	15%	33%
2.8	71.12	16.2	4.37	111.12	18%	15%	33%
2.9	73.66	16.8	4.37	111.12	17%	15%	32%
3.0	76.20	17.4	4.37	111.12	17%	15%	32%
3.1	78.74	18.0	4.37	111.12	16%	15%	31%
3.2	81.28	18.6	4.37	111.12	16%	15%	31%
3.25	82.55	18.9	4.37	111.12	16%	15%	31%
3.3	83.82	19.2	4.37	111.12	16%	15%	31%
3.4	86.36	19.9	4.37	111.12	15%	15%	30%
3.5	88.90	20.5	4.37	111.12	15%	15%	30%
3.6	91.44	21.1	4.37	111.12	14%	15%	29%
3.7	93.98	21.7	4.37	111.12	14%	15%	29%
3.75	95.25	22.0	4.37	111.12	14%	15%	29%
3.8	96.52	22.3	4.37	111.12	14%	15%	29%
3.9	99.06	23.0	4.37	111.12	14%	15%	29%
4.0	101.60	23.6	4.50	114.30	14%	15%	29%
4.1	104.14	24.2	4.50	114.30	13%	15%	28%
4.2	106.58	24.9	4.50	114.30	13%	15%	28%
4.25	107.95	25.2	4.50	114.30	13%	15%	28%
4.3	109.22	25.5	4.50	114.30	13%	15%	28%
4.4	111.76	26.1	4.50	114.30	13%	15%	28%
4.5	114.3	26.8	4.50	114.30	13%	15%	28%

*Other thicknesses available upon request.

**R- values provide a 15-year time-weighted average in accordance with CAN/ULC-S770.

Clarification from applicant:
The existing roof insulation is 2.5" or R14.4n and the ½" will provide an additional R2.5. Roof area A2 is an unheated & unconditioned space with just dry storage

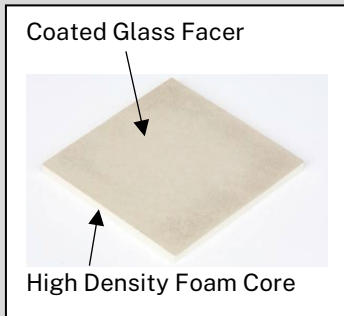
Tapered ISO 95+ GL (available sizes)				
Panel Code	Min-Max Thickness		Slope	
	Inches	mm		
AA	0.5 - 1.0	13 - 25	1/8"/ft	1%
A	1.0 - 1.5	25 - 38	1/8"/ft	1%
B	1.5 - 2.0	38 - 51	1/8"/ft	1%
C	2.5 - 2.5	51 - 64	1/8"/ft	1%
G	1.0 - 2.0	25 - 51	1/4"/ft	2%
H	2.0 - 3.0	51 - 76	1/4"/ft	2%
I	3.0 - 4.0	76 - 102	1/4"/ft	2%
X	0.5 - 1.5	13 - 38	1/4"/ft	2%
Y	1.5 - 2.5	38 - 64	1/4"/ft	2%
Z	2.5 - 3.5	64 - 89	1/4"/ft	2%
Q	0.5 - 2.5	13 - 64	1/2"/ft	4%



Please contact Holcim Technical Services at 800-428-4511 for further information.

This sheet is meant to highlight Elevate products and specifications and is subject to change without notice. Holcim takes responsibility for furnishing quality materials that meet published Elevate product specifications or other technical documents, subject to normal manufacturing tolerances. Neither Holcim nor its representatives practice architecture. Holcim offers no opinion on and expressly refuses any responsibility for the soundness of any structure. Holcim accepts no liability for structural failure or resultant damages. Consult a competent structural engineer prior to installation if the structural soundness or structural ability to properly support a planned installation is in question. No Holcim representative is authorized to vary this disclaimer.

Technical Information Sheet



ISOgard™ HD Cover Board

Item Description	Item Number
ASTM C1289 Type II Class 4, Grade 1:	
4' x 4' (1.22 m x 1.22 m)	W8H8GG050I (Half Bundle)
4' x 8' (1.22 m x 2.44 m)	W8H8GG050H (Half Bundle)
ASTM X1289 Type II Class 4, Grade 2:	
4' x 4' (1.22 m x 1.22 m)	W8H3GG050I (Half Bundle)
4' x 8' (1.22 m x 2.44 m)	W8H3GG050H (Half Bundle)

Meets or exceeds performance requirements and recommendations of ASTM C 1289, Type II, Class 4

Description

Elevate ISOgard HD Cover Board is a half-inch (13 mm) thick polyiso with insulating properties. It has a high density, closed cell, polyisocyanurate foam and coated glass facers. Elevate ISOgard HD Cover Board provides a high thermal performance when compared to other high-density insulations or cover boards.

All Elevate polyisocyanurate insulations use EPA accepted blowing agents. Elevate ISOgard HD Cover Board with ISOgard foam technology incorporates a HCFC-free blowing agent that does not contribute to the depletion of the ozone layer (ODP-free).

Code Approvals

FM4470, UL 790, UL Classified

Method of Application

- Insulation shall be neatly fitted to all roof penetrations, projections, and nailers. No more insulation shall be installed than can be covered with membrane and completed before the end of each day's work or before the onset of inclement weather.
- Elevate ISOgard HD Cover Board can be applied over: existing roof surfaces, under fully adhered or mechanically attached Single-Ply, Modified Bitumen systems applied in Multi-Purpose MB Cold Adhesive and BASEGARD™ SA base sheets with a torch applied cap or SBS sand backed cap sheet in hot asphalt.
- Elevate HD Cover Board must be installed using Elevate Fasteners and Plates or one of the following Elevate insulation adhesives:
 - I.S.O. Twin Pack™
 - I.S.O. Spray™ R
 - Approved Hot Asphalt*
 - Twin Jet
 - I.S.O.Stick™

Storage

Keep insulation dry at all times.

Precautions

- Elevate the insulation above the deck or ground.
- Combustible. Refer to Safety Data Sheet (SDS) for more information.
- Do not install over wet, damp, or uneven substrates.
- Do NOT install when wet.
- *Do NOT torch apply membranes to ISOGARD HD cover boards
- *Do NOT use hot asphalt to apply asphalt roofing systems to ISOGARD HD cover boards

LEED® Information

Recycled Content: Approximately 9%*

*Contains Post Industrial recycled content.

Manufacturing Location: Corsicana, TX Youngwood, PA Jacksonville, FL
De Forest, WI Florence, KY Bristol, CT



Manufactured in an ISO 9000 Registered Facility

FM Global Approved when applied with the fastening pattern shown.

NOTE: LEED® is a registered trademark of the U.S. Green Building Council

Typical Properties		
Property	ASTM Test	Typical Performance
Compressive Strength	Grade 1 Grade 2	D1621 D1621
		≥ 80 psi (≥ 551 kPa) ≥ 120 psi (≥ 827 kPa)
Weight	Grade 1 Grade 2	---
		4' x 4' (1.2m x 1.2m) 5.5 lb (2.5 kg) 6 lb (2.7 kg)
		4' x 8' (1.2m x 2.4m) 11 lb (5 kg) 12 lb (5.4 kg)
Thermal Resistance	C518	2.5 R
Dimensional Stability	D2126	<0.50%
Water Absorption	C209	<3% by Volume
Service Temperature	---	-100 to 250 °F (-73 to 121 °C)
Resistance to mold	D3273	Pass
Flute Span over metal decks	---	2.625" (66.7 mm)
Flame Spread	E84	50
Smoke Developed	E84	160-180

*25 psi (172 kPa) available upon request.

Acceptable Substrates	
Property	NOTE
Structural Concrete, 3000 psi (new & existing)	Please consult Membrane Design Guides online at www.holcimelevate.com to review specific information regarding fastener types appropriate for the type of deck and insulation in use.
Steel, min. 22 gauge	
Lightweight Concrete*	
Plywood and OSB, min. 1/2"	
Gypsum, min. 2"	
NOT ACCEPTABLE	Do not use hot asphalt to adhere membrane to ISOGARD HD cover boards. Elevate ISOGARD HD cover board is not suitable as an immediate substrate for a ballasted roof system.

* A vapor retarder is required to be installed under systems with insulation. A properly prepared, existing, dry and sound, uninsulated built-up roof system (all splits and blisters repaired) can be used as a vapor retarder.

NOTE: Be sure to use the required fastener for an FM approved system.

Please contact Holcim Technical Services at 800-428-4511 for further information.

This sheet is meant to highlight Elevate products and specifications and is subject to change without notice. Holcim takes responsibility for furnishing quality materials that meet published Elevate product specifications or other technical documents, subject to normal manufacturing tolerances. Neither Holcim nor its representatives practice architecture. Holcim offers no opinion on and expressly refuses any responsibility for the soundness of any structure. Holcim accepts no liability for structural failure or resultant damages. Consult a competent structural engineer prior to installation if the structural soundness or structural ability to properly support a planned installation is in question. No Holcim representative is authorized to vary this disclaimer.

Technical Information Sheet



Heavy Duty Fastener

Red Fasteners		Black Fasteners	
Size	Item Number	Size	Item Number
1 ¼"	W56RAC4230	9"	W56RAC4247
2"	W56RAC4232	11"	W56RAC4248
3"	W56RAC4234	16"	W56RAC4244
4"	W56RAC4236	18"	W56RAC4245
5"	W56RAC4237	20"	W56RAC4246
6"	W56RAC4249	22"	W56RAC4231
7"	W56RAC4239	24"	W56RAC4233
8"	W56RAC4240		
10"	W56RAC4241		
12"	W56RAC4242		
14"	W56RAC4243		

Description

The Heavy-Duty Fastener is specifically designed to be used in roofing applications which require additional corrosion protection and additional pullout resistance. The Heavy-Duty Fastener may be used for attachment of roofing insulation and base sheets in combination with Elevate Insulation Plates, or for attachment of Elevate Batten Strips, Seam Plates, Termination Bars, and other accessories to steel, wood, concrete and other decks where approved by Elevate Technical Specifications.

Method of Application

- Using the #3 Phillips tip provided, and a variable speed drill, engage the fastener into the deck as noted below. Take care not to over or under drive the fastener. Threads must engage the decking material per Elevate Technical Specifications.
- Determine screw length as follows:
 - Steel Decks: Select fastener length to penetrate through the deck a minimum of ¾" (19.1 mm).
 - Wood Decks: Select fastener length to penetrate into or through the deck a minimum of 1" (25.4 mm).
 - Concrete Decks: Select fastener length to penetrate into deck a minimum of 1" (25.4 mm).
- If pre-drilling of the deck substrate is necessary, use a hammer drill in impact mode with a 7/32" (5.6 mm) carbide drill bit. Install fasteners by using a variable speed drill at a maximum of 1,500 rpm.

Storage

Store in original, unopened packaging protected from the weather.

Precautions

Eye protection must be worn during the installation of the fasteners and any drilling operation.

LEED® Information

Post-Consumer Recycled Content: 25%
 Pre-Consumer Recycled Content: 0%
 Manufacturing Location: Addison, IL



NOTE: LEED® is a registered trademark of the U.S. Green Building Council

Product Packaging				
Screw Length	Thread Length	Pieces per Container	Weight per Pail/Ctn	Pails/Ctns per
1¼" (31.8 mm)	Full	1,000 / pail	12 lb (5.4 kg)	40
2" (50.8 mm)	Full	1,000 / pail	19 lb (8.6 kg)	40
3" (76.2 mm)	Full	1,000 / pail	29 lb (13.2 kg)	60
4" (101.6 mm)	3" (76.2 mm)	1,000 / pail	37 lb (16.8 kg)	60
5" (127.0 mm)	4" (101.6 mm)	1,000 / pail	47 lb (21.3 kg)	40
6" (152.4 mm)	4" (101.6 mm)	500 / pail	28 lb (12.7 kg)	60
7" (177.8 mm)	4" (101.6 mm)	500 / pail	33 lb 5.0 kg)	60
8" (203.2 mm)	4" (101.6 mm)	500 / pail	38 lb (17.2 kg)	60
9" (228.6 mm)	4" (101.6 mm)	500 / ctn*	42 lb (19.0 kg)	24
10" (254.0 mm)	4" (101.6 mm)	500 / ctn*	46 lb (20.9 kg)	24
11" (279.4 mm)	4" (101.6 mm)	500 / ctn*	51 lb 23.1 kg)	21
12" (304.8 mm)	4" (101.6 mm)	500 / ctn*	55 lb (24.9 kg)	24
14" (355.6 mm)	4" (101.6 mm)	500 / ctn*	65 lb (29.5 kg)	24
16" (406.4 mm)	4" (101.6 mm)	250 / ctn*	38 lb (17.2 kg)	15
18" (457.2 mm)	4" (101.6 mm)	250 / ctn*	43 lb (19.5 kg)	15
20" (508.0 mm)	4" (101.6 mm)	250 / ctn*	47 lb (21.3 kg)	15
22" (558.8 mm)	4" (101.6 mm)	125 / ctn*	65 lb (29.5 kg)	24
24" (609.6 mm)	4" (101.6 mm)	125 / ctn*	65 lb (29.5 kg)	24

* Packaged in cardboard boxes due to fastener length. May require additional lead time.

Typical Properties

Property	Typical Performance
Material	SAE 1022, Heat Treated Steel
Thread Size	0.275" (6.98 mm) Nominal Diameter
Threads/Inch	13 min.
Thread Design	Buttress thread
Fastener Tip	Drill point design
Fastener Head	#3 Phillips drive
Pullout in New 22-gauge (0.76 mm) Steel Deck	
Grade C (Grade 33)	595 lb (270 kg) min.
Grade E (Grade 80)	650 lb (295 kg) min.
Pullout in New Structural Concrete	700 lb (317.5 kg) min.
Pullout in New ¾" (19.0 mm) Plywood Deck	360 lb (163 kg) min.
Corrosion Resistant Coating	Electrocoating of fasteners exhibit 15% or less red rust after 30 cycles of Kesternich and exceed requirements of FM 4470.

Please contact Holcim Technical Services at 800-428-4511 for further information.

This sheet is meant to highlight Elevate products and specifications and is subject to change without notice. Holcim takes responsibility for furnishing quality materials that meet published Elevate product specifications or other technical documents, subject to normal manufacturing tolerances. Neither Holcim nor its representatives practice architecture. Holcim offers no opinion on and expressly refuses any responsibility for the soundness of any structure. Holcim accepts no liability for structural failure or resultant damages. Consult a competent structural engineer prior to installation if the structural soundness or structural ability to properly support a planned installation is in question. No Holcim representative is authorized to vary this disclaimer.

Firestone, the brand of premier roofing, wall, and lining systems you know and trust, will be coming to you under a new name: Elevate. During our transition, products carrying the brand name **Firestone** will change to **Elevate** on product labels and packaging, Technical Information Sheets, and elsewhere. Only the brand name is changing. Our products remain the same.

For further information on our brand transition to Elevate, scan the code below with your smartphone, or visit our website: www.holcimelevate.com



LEARN MORE

Technical Information Sheet

Image Coming Soon

Insulation Fastening Plate

Item Description	Item Number
Pail: 1,000 Pieces	W56RAC4190

Description

Insulation Fastening Plates are specially designed to be used with Elevate All-Purpose, Heavy-Duty, Concrete Drive and Stainless Steel Fasteners in roofing applications for attaching insulation as required by Elevate Specifications.

Method of Application

1. Position insulation plates over insulation as specified by Elevate Specifications.
2. Attach plates to roof deck using the appropriate Elevate fastener.
3. Install plates ribbed side up.

Storage

Store in unopened original containers protected for the weather.

Precautions

- Do not overdrive or underdrive fastener.
- Plates are designed to anchor roof insulation only.
- Avoid field seams directly over insulation plates.
- Cannot be used with Elevate Heavy Duty (HD) Plus Fasteners.

LEED® Information

Post-Consumer Recycled Content:	8%
Post Industrial Recycled Content:	17%
Manufacturing Location:	Cleveland, OH



NOTE: LEED® is a registered trademark of the U.S. Green Building Council

Product Packaging

Plate Diameter	3" (76 mm)
Pail	1000 pieces
Weight of Pail	42 lb (19 kg) per
Pails per Pallet	60

Typical Properties

Properties	Typical Performance
Material	AZ50 Galvalume®
Material Thickness	0.017" (0.43 mm) - 0.023" (0.58mm)
Diameter	3" (76 mm)
Corrosion Resistant Coating	Meets FM No. 4470 Criteria
Pull Through Resistance	400 lbf (181.4 kgf) from center hole
Corrosion Resistance	Meets FM 4470 criteria

*Galvalume® is a registered trademark of BIEC International, Inc.

Please contact Holcim Technical Services at 800-428-4511 for further information.

This sheet is meant to highlight Elevate products and specifications and is subject to change without notice. Holcim takes responsibility for furnishing quality materials that meet published Elevate product specifications or other technical documents, subject to normal manufacturing tolerances. Neither Holcim nor its representatives practice architecture. Holcim offers no opinion on and expressly refuses any responsibility for the soundness of any structure. Holcim accepts no liability for structural failure or resultant damages. Consult a competent structural engineer prior to installation if the structural soundness or structural ability to properly support a planned installation is in question. No Holcim representative is authorized to vary this disclaimer.

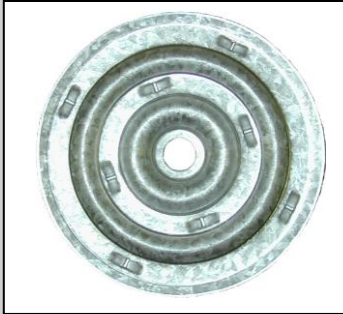
Firestone, the brand of premier roofing, wall, and lining systems you know and trust, will be coming to you under a new name: Elevate. During our transition, products carrying the brand name **Firestone** will change to **Elevate** on product labels and packaging, Technical Information Sheets, and elsewhere. Only the brand name is changing. Our products remain the same.

For further information on our brand transition to Elevate, scan the code below with your smartphone, or visit our website: www.holcimelevate.com



LEARN MORE

Technical Information Sheet



Heavy Duty Seam Plate

Item Description	Item Number
Pail: 1,000 Pieces	W56TPOPL03

Description

Heavy Duty Seam Plates are specifically designed to be used for the attachment of Elevate thermoplastic membranes to approved substrates. Elevate Heavy Duty Seam Plates are to be used with Elevate Heavy Duty or All-Purpose Fasteners into 22-gauge steel, wood or structural concrete decks (Heavy Duty Fasteners only). They may also be used with Elevate Purlin Fasteners to attach membrane to structural steel purlins. The plates are packaged in a clear plastic sleeve for easy handling. The sleeve has an easy-open pull tab with serrations that runs the length of the sleeve.

Method of Application

With Screw Gun:

1. Heavy Duty Seam Plates may be installed with a conventional screw gun. Plates are positioned within the seam area with “Elevate” logo facing up and the Eyehooks™ against the membrane.
2. The stacked plates allow for the installer to carry fifty-six (56) plates at one time, which are all oriented in the same direction, making it easier to lay out the plates.
3. Once placed in the correct seam location, the plate is attached with Elevate All-Purpose, Heavy Duty, or Purlin Fasteners as appropriate to the system requirements.

With AccuSeam™ Tool:

The AccuSeam “boot” attachment can be purchased by owners of AccuTrac® III tools upon request. Tools with serial number of 12134 or higher are required. Training on the AccuTrac Tool is recommended prior to use.

1. Remove the weight from the plate magazine by lifting out. Remove one tube of stacked plates from the pail and tear off the perforated edge. This will expose the stack of plates, which are all oriented in the same direction.
2. Remove and slide the plates into the magazine with the “Elevate” logo facing up, eyehooks facing down.
3. Replace the weight, and you are ready to start.
4. Drop a fastener into the feed tube, turn the screw gun on, and push the tool all the way down until the fastener is properly seated in the plate.
5. Pull the screw gun back up, move the tool to the next position, drop in your fastener, and repeat step 4.

Storage

Store in unopened original containers protected for the weather.

Precautions

- Do not overdrive or underdrive fastener.
- Not for use with Heavy Duty Plus Fasteners.
- Avoid installing HD Seam Plates / field seams directly over insulation plates.

LEED® Information

Post-Consumer Recycled Content: 0%
 Post Industrial Recycled Content: 21%
 Manufacturing Location: West Chicago, IL



NOTE: LEED® is a registered trademark of the U.S. Green Building Council

Product Packaging	
Weather Resistant Pail	1000 pieces
Weight of Pail	48 lb (21.8 kg) per
Pails per Pallet	40

Typical Properties	
Properties	Typical Performance
Material	Galvalume® Sheet Steel AZ50 or AZ55
Material Thickness	0.034" (0.86 mm)
Size	2 ³ / ₈ " (60.3 mm) diameter
Hole Diameter	0.265" ±.003" (6.73 mm ± 0.076 mm)
Pull-Through Resistance	700 lb (317.5 kg) from center hole
Corrosion Resistance	Meets FM No. 4470 criteria

*Galvalume® is a registered trademark of BIEC International, Inc.
 **Eyehook™, AccuSeam™, and AccuTrac® III are trademarks of OMG.

Please contact Holcim Technical Services at 800-428-4511 for further information.

This sheet is meant to highlight Elevate products and specifications and is subject to change without notice. Holcim takes responsibility for furnishing quality materials that meet published Elevate product specifications or other technical documents, subject to normal manufacturing tolerances. Neither Holcim nor its representatives practice architecture. Holcim offers no opinion on and expressly refuses any responsibility for the soundness of any structure. Holcim accepts no liability for structural failure or resultant damages. Consult a competent structural engineer prior to installation if the structural soundness or structural ability to properly support a planned installation is in question. No Holcim representative is authorized to vary this disclaimer.

Firestone, the brand of premier roofing, wall, and lining systems you know and trust, will be coming to you under a new name: Elevate. During our transition, products carrying the brand name **Firestone** will change to **Elevate** on product labels and packaging, Technical Information Sheets, and elsewhere. Only the brand name is changing. Our products remain the same.

For further information on our brand transition to Elevate, scan the code below with your smartphone, or visit our website: www.holcimelevate.com



LEARN MORE

Technical Information Sheet



UltraPly™ TPO Membrane

Item Description	Item Number
1 Roll <i>Meets or exceeds ASTM D 6878.</i>	Various

Description

Elevate UltraPly TPO is a flexible Thermoplastic Polyolefin roofing membrane that is produced with polyester weft-inserted reinforcement. UltraPly TPO membrane meets or exceeds all requirements for ASTM D 6878 Specification. This heat weldable TPO membrane is available in 45 mil (1.14 mm) and 60 mil (1.52 mm) thicknesses. This reflective membrane is suitable for a variety of low-slope applications.

Method of Application

1. Substrates must be clean, dry, smooth, and free of sharp edges, fins, loose or foreign materials, oil, grease, and other materials that may damage the membrane.
2. All rough surfaces that can damage the membrane shall be repaired as specified to offer a smooth substrate.
3. All surface voids greater than ¼" (6.3 mm) wide shall be properly filled with an acceptable fill material.
4. Elevate UltraPly TPO membrane is installed as continuous roofing or waterproofing layer on the roof. Rolls are overlapped (side laps and end laps) prior to heat welding the seam areas.
5. Install the UltraPly TPO Roofing System in accordance with current Elevate UltraPly TPO specifications, details, and workmanship requirements.

Storage

- Store away from sources of punctures and physical damage.
- Assure that structural decking will support the loads incurred by material when stored on rooftop. The deck load limitations should be specified by the project designer.
- Store away from ignition sources as membrane will burn when exposed to open flame.

Precautions

- Exercise caution when lifting, moving, transporting, storing, or handling membrane rolls to avoid sources of punctures and possible physical damage.
- Contact a Regional Technical Coordinator at 1-800-428-4511 for specific recommendations regarding chemical or waste product compatibility with Elevate UltraPly TPO Membrane.
- Refer to Safety Data Sheets (SDS) for additional safety information.

LEED® Information

Post-Consumer Recycled Content: 0%
 Post Industrial Recycled Content: 15%
 Manufacturing Location: Wellford, SC / Tuscumbia, AL

NOTE: LEED® is a registered trademark of the U.S. Green Building Council



Typical Properties				
Properties	ASTM Standard	Performance Minimum	Typical Performance 45 mil	Typical Performance 60 mil
Overall Thickness	D 751	0.039" (1 mm)	0.045" (1.14 mm) ± 10%	0.060" (1.52 mm) ± 10%
Coating Over Scrim	D 7635	0.015" (0.38 mm)	0.017" (0.43 mm)	0.021" (0.53 mm)
Breaking Strength	D 751, Grab Method	220 lbf (979 N)	340 lbf (1,512 N)	390 lbf (1,735 N)
Elongation of Reinforcement Break	D 751, Grab Method	15%	25%	25%
Tearing Strength	D 751	55 lbf (245 N)	120 lbf (534 N)	120 lbf (534 N)
Brittleness Point	D 2137	-40 °F (-40 °C)	Pass	Pass
Ozone Resistance, No Cracks	D 1149	Pass (No Cracks)	Pass	Pass
Properties After Heat Aging (Retained Values) ASTM D 573-5376 h (224 days or 32 weeks) at 240 °F (116 °C)				
Breaking Strength	D 751, Grab Method	90% Minimum	> 90%	> 90%
Elongation at Break	D 751, Grab Method	90% Minimum	> 90%	> 90%
Tearing Strength	D 751	60% Minimum	> 60%	> 60%
Weight of Change	---	± 1% Maximum	< 1%	< 1%
Linear Dimension Change	D 1204, 6 h at 158 °F (70 °C)	± 1% Maximum	< 1%	< 1%
Water Absorption	D 471	± 3% Maximum	< 3%	< 3%

Typical Properties (Continued)

Weather Resistance*	G 155	10,800 kJ/m ² Minimum	> 60,000 kJ/m ²	> 60,000 kJ/m ²
*176 °F (80 °C) Black Panel, no cracking, crazing when wrapped around a 3" (76.2 mm) mandrel and inspected at 7X magnification				
Puncture Resistance	FTM 101C, Method 2031	---	265 (1,180)	300 (1,300)
Dynamic Puncture Resistance MD	D 5635	---	Pass (20 J)	Pass (40 J)
Dynamic Puncture Resistance CD	D 5635	---	Pass (35 J)	Pass (50 J)
Static Puncture Resistance	D 5602	---	Pass (25 kg)	Pass (25 kg)
Air Permeance (Material)	E 2178	< 0.004 ft ³ /ft ² (0.02 L/(s*m ²))	Pass	Pass
<ol style="list-style-type: none"> The ASTM 2178 values listed above are for the air permeance of the UltraPly TPO Membrane component only. When system design includes an air barrier, please consult your Elevate Technical Services Advisor for additional roof system securement enhancements. Consult the Designer / Architect, Code Agency or Authority having Jurisdiction (AHJ) for requirements regarding the selection and use of an appropriate air barrier material, and its installation into the building envelope. 				

Radiative Properties

Cool Roof Ratings Council (CRRC): Values: Initial / 3 Year	White	Tan	Light Tan* (HR)	Gray
Solar Reflectance	0.79 / 0.69	0.61 / 0.55	0.79 / 0.63**	0.34 / 0.34
Thermal Emittance	0.85 / 0.83	0.81 / 0.84	0.90 / 0.90**	0.89 / 0.88
Solar Reflectance Index (SRI)	98 / 83	71 / 63	90 / 77**	37 / 36
Rated Product ID	0008	0015	TBD	0032
Licensed Manufacturer ID	0608	0608	TBD	0608
Classification	Production Line	Production Line	Production Line	Production Line
LEED®	White	Tan	Light Tan* (HR)	Gray
Initial Solar Reflectance Index (SRI)	Pass (98)	---	---	---
3-year Aged Solar Reflectance Index (SRI)	Pass (83)	---	---	---

*Light Tan data determined by testing conducted by PRI Construction Materials Technologies LLC

**Rapid Ratings Results

Product Sizes			
Membrane Thickness: 0.045" (1.14 mm) Membrane Weight: 0.23 lb/ft ² (1.1 kg/m ²)		Membrane Thickness: 0.060" (1.52 mm) Membrane Weight: 0.31 lb/ft ² (1.5 kg/m ²)	
Available Sizes	Available Colors	Available Sizes	Available Colors
5' x 100' (1.5 x 30.5 m)	White, Tan, Gray	5' x 100' (1.5 x 30.5 m)	White, Tan, Gray
5' x 200' (1.5 x 61 m)	White	5' x 200' (1.5 x 61 m)	White
6' 2" x 100' (1.9 x 30.5 m)	White, Tan, Gray	6' 2" x 100' (1.9 x 30.5 m)	White, Tan, Gray
8' x 100' (2.4 x 30.5 m)	White, Tan, Gray	8' x 100' 2.4 x 30.5 m)	White, Tan, Gray
8' x 200' (2.4 x 61 m)	White	8' x 200' (2.4 x 61 m)	White
10' x 100' (3.0 x 30.5 m)	White, Tan, Gray	10' x 100' (3.0 x 30.5 m)	White, Tan, Gray
10' x 200' (3.0 x 61 m)	White	10' x 200' (3.0 x 61 m)	White
12' 4" x 100' (3.8 x 30.5 m)	White, Tan, Gray	12' 4" x 100' (3.8 x 30.5 m)	White, Tan, Gray
12' 4" x 200' (3.8 x 61 m)	White	12' 4" x 200' (3.8 x 61 m)	White

Please contact Holcim Technical Services at 800-428-4511 for further information.

This sheet is meant to highlight Elevate products and specifications and is subject to change without notice. Holcim takes responsibility for furnishing quality materials that meet published Elevate product specifications or other technical documents, subject to normal manufacturing tolerances. Neither Holcim nor its representatives practice architecture. Holcim offers no opinion on and expressly refuses any responsibility for the soundness of any structure. Holcim accepts no liability for structural failure or resultant damages. Consult a competent structural engineer prior to installation if the structural soundness or structural ability to properly support a planned installation is in question. No Holcim representative is authorized to vary this disclaimer.

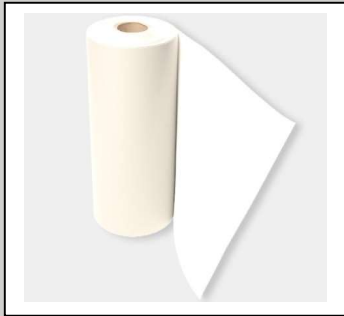
Firestone, the brand of premier roofing, wall, and lining systems you know and trust, will be coming to you under a new name: Elevate. During our transition, products carrying the brand name **Firestone** will change to **Elevate** on product labels and packaging, Technical Information Sheets, and elsewhere. Only the brand name is changing. Our products remain the same.

For further information on our brand transition to Elevate, scan the code below with your smartphone, or visit our website: www.holcimelevate.com



LEARN MORE

Technical Information Sheet



UltraPly™ TPO Unsupported Flashing

Item Description	Item Number
1 Roll – White	W56TPO3017
1 Roll – Tan	W56TPOT026
1 Roll – Gray	W56TPOG026

Description

Elevate UltraPly TPO Unsupported Flashing is a non-reinforced, thermoplastic polyolefin membrane. It is used in roofing applications where Elevate pre-formed TPO accessory products are not appropriate. Elevate UltraPly TPO Unsupported Flashing is available in white, tan and gray.

Method of Application

1. Substrates must be clean, dry, smooth, and free of sharp edges, fins, loose or foreign materials, oil, grease, and other materials that may damage the TPO Unsupported Flashing.
2. All rough surfaces that can damage the flashing shall be repaired as specified to make a smooth substrate.
3. All surface voids greater than 1/4" (6.3 mm) wide shall be properly filled with an acceptable fill material.
4. Install the Elevate UltraPly TPO Unsupported Flashing material with the appropriate heat welding equipment in accordance with current Elevate UltraPly TPO specifications, details and workmanship requirements.

Storage

Store material in its original unopened packaging away from sources of physical damage or chemical contamination. Tarp if stored outside.

Precautions

- For safety information, refer to Safety Data Sheet (SDS) for TPO systems.
- Exercise caution when lifting, moving, transporting storing or handling flashing rolls to avoid sources of punctures, physical damage, or chemical contamination.
- Contact a Regional Technical Coordinator at 1-800-428-4511 for specific recommendations regarding chemical or waste product compatibility with Elevate UltraPly TPO Unsupported Flashing.

LEED® Information

Post-Consumer Recycled Content: 0%
 Post Industrial Recycled Content: 0%
 Manufacturing Location: Welford, SC & Tuscumbia, AL
NOTE: LEED® is a registered trademark of the U.S. Green Building Council

Typical Properties		
Properties	Test Method	Typical Performance
Membrane Thickness	D 751	0.060" (1.52 mm)
Tensile Strength	D 638	1,780 psi (12.3 MPa)
Elongation at Break	D 638	750%
Tearing Strength	1004 (Die C)	16 lbf (71 N)
Brittleness Point	D 2137	-40 °F (-40 °C)
Properties After Heat Aging (Retained Values) (166 h at 240 °F (116 °C))		
Tensile Strength	D 638	1,550 psi (10.7 MPa)
Elongation at Break	D 638	650%
Tearing Strength	1004 (Die C)	12 lbf (53 N)

Product Data	
Material	Thermoplastic Polyolefin (TPO)
Colors	White, Tan, Gray
Nominal Thickness	0.060" (1.52 mm)
Width	24" (610 mm)

Please contact Holcim Technical Services at 800-428-4511 for further information.

This sheet is meant to highlight Elevate products and specifications and is subject to change without notice. Holcim takes responsibility for furnishing quality materials that meet published Elevate product specifications or other technical documents, subject to normal manufacturing tolerances. Neither Holcim nor its representatives practice architecture. Holcim offers no opinion on and expressly refuses any responsibility for the soundness of any structure. Holcim accepts no liability for structural failure or resultant damages. Consult a competent structural engineer prior to installation if the structural soundness or structural ability to properly support a planned installation is in question. No Holcim representative is authorized to vary this disclaimer.

Firestone, the brand of premier roofing, wall, and lining systems you know and trust, will be coming to you under a new name: Elevate. During our transition, products carrying the brand name **Firestone** will change to **Elevate** on product labels and packaging, Technical Information Sheets, and elsewhere. Only the brand name is changing. Our products remain the same.

For further information on our brand transition to Elevate, scan the code below with your smartphone, or visit our website: www.holcimelevate.com



LEARN MORE

Technical Information Sheet

Image Coming Soon

Splice Wash SW-100

Item Description	Item Number
Splice Wash	W563587066

Description

Splice Wash SW-100 is designed to clean and prepare Elevate single-ply membranes to be welded or to receive Elevate Primers, Adhesives or Sealants as noted in Elevate Specifications and Details. This product is not intended for use with PVC or PVC KEE membranes.

Method of Application

1. Surfaces to be welded, or to receive primer, adhesive or sealant shall be clean, dry, and free of foreign materials and excess dusting agent. Remove loose contaminants using brooms or rags.
2. Clean/prepare dirty surfaces using clean cotton rags wetted with Splice Wash SW-100, moving in circular motions with heavy pressure over affected areas. Membrane with caked dirt, including in-service thermoplastic membranes, should be scrubbed using QuickScrubber™ Handle & Pad wetted with Single-Ply Splice Wash SW-100, followed by wiping with clean rags to remove contaminants. On thermoplastic surfaces, the wipe with Splice Wash SW-100 should be in one direction, flipping the rag often to avoid transferring contaminants.
3. Allow surfaces cleaned with Single-Ply Splice Wash SW-100 to dry completely (usually within 10 to 30 minutes) before welding or applying primer, adhesive or sealant per current Elevate specifications and details.
4. Contact a Regional Technical Coordinator at 1-800-428-4511 for specific application information.

Storage

- Store in original unopened pails indoors at temperatures between 60 °F - 80 °F (16 °C - 27 °C) away from all sources of direct heat and ignition - this is a flammable liquid.
- When exposed to lower temperatures, restore to room temperature prior to use.
- Keep the material out of direct sunlight until ready for immediate use.

Shelf Life

Shelf life of two (2) years can be expected when stored in original unopened container at temperatures between 60 °F (16 °C) and 80 °F (27 °C).

Coverage Rate

200-250 ft²/gallon (4.9 - 6.1 m²/L) on one side

Precautions

- Refer to Safety Data Sheets (SDS) for additional safety information.
- Flammable liquid. Store and use away from all sources of direct heat and ignition.
- Cover tightly when not in use.
- Thinning is not allowed.
- Use solvent-resistant Neoprene gloves is required when applying Splice Wash. Avoid contact with eyes and skin.
- Avoid breathing vapors.
- Do not directly wash QuickSeam™ Tape with Splice Wash SW-100.
- Do not take internally.
- Use only in well ventilated areas.
- This product is not to be used with PVC or PVC KEE membranes.

Packaging

5 gallon (18.9 L) pail; about 35 lb (13.6 kg) per pail

LEED® Information

Post-Consumer Recycled Content: 0%

Post Industrial Recycled Content: 0%

Manufacturing Location: South Bend, IN

NOTE: LEED® is a registered trademark of the U.S. Green Building Council

Typical Properties	
Properties	Typical Performance
Solvents	Aliphatic Hydrocarbon Mixture
Viscosity	Very thin, free flowing
Weight per Gallon	6.3 lb/gal (0.75 kg/L) (nominal)
Specific Gravity	0.75 (nominal)
Boiling Point	247 °F (119.4 °C)
V.O.C. Content	6.21 lb/gal (745 g/L)

Please contact Holcim Technical Services at 800-428-4511 for further information.

This sheet is meant to highlight Elevate products and specifications and is subject to change without notice. Holcim takes responsibility for furnishing quality materials that meet published Elevate product specifications or other technical documents, subject to normal manufacturing tolerances. Neither Holcim nor its representatives practice architecture. Holcim offers no opinion on and expressly refuses any responsibility for the soundness of any structure. Holcim accepts no liability for structural failure or resultant damages. Consult a competent structural engineer prior to installation if the structural soundness or structural ability to properly support a planned installation is in question. No Holcim representative is authorized to vary this disclaimer.

Firestone, the brand of premier roofing, wall, and lining systems you know and trust, will be coming to you under a new name: Elevate. During our transition, products carrying the brand name **Firestone** will change to **Elevate** on product labels and packaging, Technical Information Sheets, and elsewhere. Only the brand name is changing. Our products remain the same.

For further information on our brand transition to Elevate, scan the code below with your smartphone, or visit our website: www.holcimelevate.com



LEARN MORE

Technical Information Sheet



UltraPly™ TPO T-Joint Cover

Item Description	Item Number
White	W56TPO3027
Tan	W56TPOT027
Gray	W56TPOG027

Description

Elevate UltraPly TPO T-Joint Covers are made from flexible, non-reinforced, thermoplastic polyolefin membrane. They are designed to cover and seal T-joints formed at seam intersections and at angle changes 1:12 or greater for UltraPly TPO membranes.

Method of Application

1. Prepare T-joint area by removing all dirt and debris from membrane surface. Clean the surface area of the field sheet and the T-Joint Cover with Elevate Splice Wash SW-100 prior to installation of Elevate UltraPly TPO T-Joint Covers.
2. Install UltraPly TPO T-Joint Covers in accordance with current Elevate UltraPly TPO roofing specifications and details.

Storage

Store material in its original unopened packaging away from sources of physical damage or chemical contamination.

Precautions

- Refer to Safety Data Sheet (SDS) for TPO systems for safety information.
- Contact a Regional Technical Coordinator at 1-800-428-4511 for specific recommendations regarding chemical or waste product compatibility with Elevate UltraPly TPO T-Joint Covers.

LEED® Information

Post-Consumer Recycled Content: 0%
 Post Industrial Recycled Content: 0%
 Manufacturing Location: Wellford, SC
NOTE: LEED® is a registered trademark of the U.S. Green Building Council

Typical Properties		
Properties	Test Method	Typical Performance
Membrane Thickness	D 751	0.060" (1.52 mm)
Tensile Strength	D 638	1,780 psi (12.3 MPa)
Elongation at Break	D 638	750%
Tearing Strength	1004 (Die C)	16 lbf (71 N)
Brittleness Point	D 2137	-40 °F (-40 °C)
Properties After Heat Aging (Retained Values) (166 h at 240 °F (116 °C)):		
Tensile Strength	D 638	1,550 psi (10.7 MPa)
Elongation at Break	D 638	650%
Tearing Strength	1004 (Die C)	12 lbf (53 N)

Product Data			
Units per Carton	100	Cartons per Pallet	100
Weight per Carton	9 lb (4.1 kg)	Weight per Pallet	900 lb (408 kg)

Product Packaging	
Material	Thermoplastic Polyolefin (TPO)
Colors	White, Tan, Gray
Nominal Thickness	0.060" (1.52 mm) ± 10%
Width	4" x 4" (102 mm x 102 mm) with ½" (13 mm) radius corners

Please contact Holcim Technical Services at 800-428-4511 for further information.

This sheet is meant to highlight Elevate products and specifications and is subject to change without notice. Holcim takes responsibility for furnishing quality materials that meet published Elevate product specifications or other technical documents, subject to normal manufacturing tolerances. Neither Holcim nor its representatives practice architecture. Holcim offers no opinion on and expressly refuses any responsibility for the soundness of any structure. Holcim accepts no liability for structural failure or resultant damages. Consult a competent structural engineer prior to installation if the structural soundness or structural ability to properly support a planned installation is in question. No Holcim representative is authorized to vary this disclaimer.

Firestone, the brand of premier roofing, wall, and lining systems you know and trust, will be coming to you under a new name: Elevate. During our transition, products carrying the brand name **Firestone** will change to **Elevate** on product labels and packaging, Technical Information Sheets, and elsewhere. Only the brand name is changing. Our products remain the same.

For further information on our brand transition to Elevate, scan the code below with your smartphone, or visit our website: www.holcimelevate.com



LEARN MORE

Technical Information Sheet



UltraPly™ TPO Inside / Outside Corner

Item Description	Item Number
White	W56TPO301C
Tan	W56TPO101C
Gray	W56TPOG01C

Description

Elevate UltraPly TPO Inside/Outside Corners are molded from a flexible thermoplastic polyolefin. The TPO Inside/Outside Corners were specifically designed for flashing either inside or outside corners on curbs, parapets, and scuppers.

Method of Application

1. Prepare TPO Inside/Outside Corner areas by removing all dirt and debris from the membrane surface. Clean the surface area of the field sheet and the inside and outside corners with Elevate Splice Wash SW-100 prior to installation of the TPO Inside/Outside Corner.
2. By cutting the TPO Inside/Outside Corner on the appropriate guideline, the product can be used to complete the flashing of either an inside or an outside corner.
3. All cut corners must be rounded off prior to being heat welded per current Elevate UltraPly TPO Specifications. Care should be taken during the heat welding process to prevent heat buildup that could damage the TPO Inside/Outside Corner.

Storage

Store material in its original unopened packaging away from sources of physical damage or chemical contamination.

Precautions

- Refer to Safety Data Sheet (SDS) for TPO systems for safety information.
- Contact a Regional Technical Coordinator at 1-800-428-4511 for specific recommendations regarding chemical or waste product compatibility with Elevate UltraPly TPO Inside/Outside Corner.
- Transitions may require additional heat to conform to step-off.

LEED® Information

Post-Consumer Recycled Content: 0%
 Post Industrial Recycled Content: 0%
 Manufacturing Location: Wellford, SC
NOTE: LEED® is a registered trademark of the U.S. Green Building Council

Typical Properties		
Properties	Test Method	Typical Performance
Membrane Thickness	D 751	0.070" (1.78 mm)
Tensile Strength	D 638	1,780 psi (12.3 MPa)
Elongation at Break	D 638	750%
Tearing Strength	1004 (Die C)	11 lbf (49 N)
Brittleness Point	D 2137	-40 °F (-40 °C)
Properties After Heat Aging (Retained Values) (166 h at 240 °F (116 °C))		
Tensile Strength	D 638	1,550 psi (10.7 MPa)
Elongation at Break	D 638	650%
Tearing Strength	1004 (Die C)	9 lbf (40 N)

Product Data	
Properties	Value
Material	Thermoplastic Polyolefin (TPO)
Thickness	0.070" (1.8 mm)
Colors	White, Tan, Gray
Overall Size	6" (150 mm) x 8" (200 mm)
Corner Size	3" x 3" x 3.25" (75 mm x 75 mm x 83 mm) with 0.5" (12 mm) radius on all edges of the raised corner

Product Packaging			
Units per Carton	20	Weight per Carton	8 lb (3.6 kg)

Please contact Holcim Technical Services at 800-428-4511 for further information.

This sheet is meant to highlight Elevate products and specifications and is subject to change without notice. Holcim takes responsibility for furnishing quality materials that meet published Elevate product specifications or other technical documents, subject to normal manufacturing tolerances. Neither Holcim nor its representatives practice architecture. Holcim offers no opinion on and expressly refuses any responsibility for the soundness of any structure. Holcim accepts no liability for structural failure or resultant damages. Consult a competent structural engineer prior to installation if the structural soundness or structural ability to properly support a planned installation is in question. No Holcim representative is authorized to vary this disclaimer.

Firestone, the brand of premier roofing, wall, and lining systems you know and trust, will be coming to you under a new name: Elevate. During our transition, products carrying the brand name **Firestone** will change to **Elevate** on product labels and packaging, Technical Information Sheets, and elsewhere. Only the brand name is changing. Our products remain the same.

For further information on our brand transition to Elevate, scan the code below with your smartphone, or visit our website: www.holcimelevate.com



LEARN MORE

Technical Information Sheet

Image Coming Soon

UltraPly™ TPO Clear Cut Edge Sealant

Item Description	Item Number
Clear	W56TPOC002

Description

Elevate UltraPly TPO Clear Cut Edge Sealant is a polymer-based sealant used to seal all cut edges of UltraPly TPO Membrane where the polyester reinforcement is exposed. It is approved for use with all Elevate TPO membranes.

Method of Application

1. Surfaces to receive UltraPly TPO Clear Cut Edge Sealant must be clean, dry, and free of loose and foreign materials, oil and grease.
2. Allow the welded seam to cool prior to application of UltraPly TPO Cut Edge Sealant. Seam should be cool to the touch.
3. Clean seam area with Elevate Splice Wash SW-100 prior to treating the cut edge with sealant.
4. Trim the time of the nozzle to provide approximately a 1/8" (3.175 mm) opening.
5. Apply an approximate 1/8" (3.175 mm) to 1/4" (6.35 mm) diameter bead of sealant to all exposed cut edges of UltraPly TPO Membrane with exposed reinforcement. The UltraPly TPO Clear Cut Edge Sealant can be used at 20 °F (-6.67 °C) and rising if blushing is not present.

Clean-Up

Recommended cleaner is rubbing alcohol followed by soap and water.

Coverage Rate

- 1/8" (3.175 mm) diameter bead: 188 lf/pt (57 m/0.47L)
- 1/4" (6.35 mm) diameter bead: 50 lf/pt (15.2 m/0.47L)

Storage

- Store in original unopened containers at temperatures between 60 °F and 80 °F (15.6 °C and 26.7 °C) until ready for use.
- When exposed to lower temperatures, restore to room temperature prior to use.
- For option results, rotate stock to ensure stored material has not exceeded the shelf life of one (1) year.

Shelf Life

Shelf life of one (1) year can be expected when stored in original, sealed container at temperatures between 60 °F and 80 °F (15.6 °C and 26.7 °C). Shelf life will be shortened if exposed to elevated temperatures for a prolonged period of time.

Precautions

- Refer to Safety Data Sheets (SDS) for additional safety information.
- Flammable. Keep away from fire and open flames during storage and use. Do not smoke when using.
- Use only in well ventilated areas.
- Cover tightly when not in use.
- Do not contaminate with foreign materials.
- Do not thin.
- UltraPly TPO Clear Cut Edge Sealant is not to be used for splicing or as a general-purpose caulking.

LEED® Information

Post-Consumer Recycled Content: 0%

Post Industrial Recycled Content: 0%

Manufacturing Location: Akron, OH

NOTE: LEED® is a registered trademark of the U.S. Green Building Council

Typical Properties	
Properties	Value
Base	Synthetic Rubber
Color	Clear
Solids	28 - 32%
Viscosity	3,000 – 4,000 cps
Weight/Gallon	7.4 lb/gal (3.4 kg/L)
V.O.C. Content	611 g/L
Cure Time	24 hours
Tack Free Time	4 hours

Product Packaging	
Bottle	1 Pint (0.47 L)
Carton	12 Squeeze Bottle with Applicator Nozzles
Carton Weight	13 lb (5.9 kg)

Please contact Holcim Technical Services at 800-428-4511 for further information.

This sheet is meant to highlight Elevate products and specifications and is subject to change without notice. Holcim takes responsibility for furnishing quality materials that meet published Elevate product specifications or other technical documents, subject to normal manufacturing tolerances. Neither Holcim nor its representatives practice architecture. Holcim offers no opinion on and expressly refuses any responsibility for the soundness of any structure. Holcim accepts no liability for structural failure or resultant damages. Consult a competent structural engineer prior to installation if the structural soundness or structural ability to properly support a planned installation is in question. No Holcim representative is authorized to vary this disclaimer.

Firestone, the brand of premier roofing, wall, and lining systems you know and trust, will be coming to you under a new name: Elevate. During our transition, products carrying the brand name **Firestone** will change to **Elevate** on product labels and packaging, Technical Information Sheets, and elsewhere. Only the brand name is changing. Our products remain the same.

For further information on our brand transition to Elevate, scan the code below with your smartphone, or visit our website: www.holcimelevate.com



LEARN MORE

Technical Information Sheet



UltraPly™ TPO Universal Pipe Boot

Item Description	Item Number
White	W56TPO301U
Tan	W56TPOT01U
Gray	W56TPOG01U

Description

The UltraPly TPO Universal Pipe Boot is specifically designed for the flashing of round penetrations on TPO installations. The UltraPly TPO Universal Pipe Boot fits various penetrations from 1" (25 mm) to 6" (150 mm). It must be cut to correct size before installation.

Method of Application

1. UltraPly TPO membrane shall be clear of all dust, dirt, and other contaminants prior to installation of the UltraPly TPO Universal Pipe Boot.
2. Penetration shall be clean of foreign material and any old flashing materials.
3. Cut out a circle, above the rib, on the outside of a level ring of the UltraPly TPO Universal Pipe Boot that is smaller than the penetration.
4. Heat-weld the flashing into place and install the clamp and sealant per current UltraPly TPO specifications.

Storage

Store material in its original unopened packaging away from sources of physical damage or chemical contamination.

Precautions

Do not install over uneven substrates.

LEED® Information

Post-Consumer Recycled Content: 0%
 Post Industrial Recycled Content: 0%
 Manufacturing Location: Wellford, SC
 NOTE: LEED® is a registered trademark of the U.S. Green Building Council

Typical Properties	
Properties	Value
Material	Thermoplastic Polyolefin (TPO)
Color	White, Tan, Gray
Clamp	Stainless steel – worm gear type
Pipe Flange	13" (330 mm) diameter
Thickness	0.055" – 0.075" (1.4 mm – 1.9 mm)

Fits the Pipe Outside Diameter	
1"	25 mm
1 ½"	38 mm
2"	50 mm
3"	76 mm
4"	102 mm
5"	127 mm
6"	152 mm

Product Packaging	
Units per Carton	10 UltraPly TPO Universal Pipe Boots - 10 Stainless Steel Clamps

Please contact Holcim Technical Services at 800-428-4511 for further information.

This sheet is meant to highlight Elevate products and specifications and is subject to change without notice. Holcim takes responsibility for furnishing quality materials that meet published Elevate product specifications or other technical documents, subject to normal manufacturing tolerances. Neither Holcim nor its representatives practice architecture. Holcim offers no opinion on and expressly refuses any responsibility for the soundness of any structure. Holcim accepts no liability for structural failure or resultant damages. Consult a competent structural engineer prior to installation if the structural soundness or structural ability to properly support a planned installation is in question. No Holcim representative is authorized to vary this disclaimer.

Firestone, the brand of premier roofing, wall, and lining systems you know and trust, will be coming to you under a new name: Elevate. During our transition, products carrying the brand name **Firestone** will change to **Elevate** on product labels and packaging, Technical Information Sheets, and elsewhere. Only the brand name is changing. Our products remain the same.

For further information on our brand transition to Elevate, scan the code below with your smartphone, or visit our website: www.holcimelevate.com



LEARN MORE

Technical Information Sheet



UltraPly™ TPO Walkway Pad

Item Description	Item Number
1 Roll: 30" x 50' (76 mm x 15 m)	W56TPO3024

Description

The Elevate UltraPly TPO Walkway Pad is a reinforced walkway composed of white thermoplastic material. The pad is produced into 30" (762 mm) wide by 50' (15 m) long rolls. The pad has a textured surface and a smooth bottom surface for easy welding to UltraPly TPO roof membrane.

The walkway pad or acceptable paver is required at all access points (ladders, hatches, doorways, etc), and is recommended in areas where necessary rooftop traffic will occur to help protect the roofing system from damage as follows:

- As a walkway system on roofs subjected to traffic more frequently than once per month.
- Around rooftop equipment that requires periodic maintenance.

Method of Application

1. Ensure membrane surface is clean, completely dry, and free of debris.
2. Place the UltraPly TPO Walkway Pad over the UltraPly TPO membrane with the textured side up. Cut the material into lengths that can be handled easily. Allow the pad to relax prior to installation.
3. Install the UltraPly TPO Walkway Pad in maximum 10' (3 m) long sections with a space between each section to allow for proper drainage. Position the pad so that it does not result in ponding water.
4. Avoid applying the walkway pad over UltraPly TPO membrane seams and detail flashings.
5. Fully heat weld the perimeter of each section of UltraPly TPO Walkway Pad to the UltraPly TPO roof membrane, leaving one or two 1" gaps in the weld at the low side of the pad to allow for the escape of inadvertent moisture. To achieve the best aesthetic quality, weld when ambient temperature is between 60 and 80 °F (16 and 27 °C). Welder temperature settings will vary with the ambient conditions.

Storage

- Store away from sources of punctures and physical damage.

- Assure that structural decking will support the loads incurred by material when stored on rooftop. The deck load limits should be specified by the project designer.
- Store away from ignition sources as membrane will burn when exposed to open flame.

Precautions

- Do not expose walkway material to any open flames or ignition sources.
- Refer to Safety Data Sheets (SDS) for additional safety information.

LEED® Information

Post-Consumer Recycled Content: 0%

Post Industrial Recycled Content: 0%

Manufacturing Location: Wellford, SC

NOTE: LEED® is a registered trademark of the U.S. Green Building Council

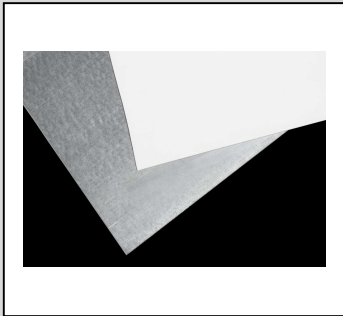
Typical Properties		
Properties	Test Method	Typical Performance
Color	N/A	White
Overall Thickness	D751	0.156" ± 0.010"
Elongation at Break	D412	300%
Tearing Strength	D624	250 lbf/in
Linear Dimensional Stability	D1204	0 ± 0.5%
Accelerated Weathering	G155	5,000 hrs, 10X Magnification, No Cracks
Solar Reflectance	ASTM E903	75%
Thermal Emittance**	ASTM E408	0.95
Solar Reflectance Index (SRI)***	ASTM E1980	94
** Values were obtained from independent testing by Atlas Material Testing DSET Laboratories.		
*** SRI was calculated using the SRI calculator from the USGBC.		

Typical Properties	
1 Roll	30" x 50' (762 mm x 15 m)
Roll Weight	74 lb (34 kg)
Coverage Rate	125 ft ² per Roll

Please contact Holcim Technical Services at 800-428-4511 for further information.

This sheet is meant to highlight Elevate products and specifications and is subject to change without notice. Holcim takes responsibility for furnishing quality materials that meet published Elevate product specifications or other technical documents, subject to normal manufacturing tolerances. Neither Holcim nor its representatives practice architecture. Holcim offers no opinion on and expressly refuses any responsibility for the soundness of any structure. Holcim accepts no liability for structural failure or resultant damages. Consult a competent structural engineer prior to installation if the structural soundness or structural ability to properly support a planned installation is in question. No Holcim representative is authorized to vary this disclaimer.

Technical Information Sheet



UltraPly™ TPO Coated Metal

Item Description	Item Number
White	W56TPO3023
Gray	W56TPOG023
Tan (HR)	W56TPOLT023

Description

Elevate UltraPly TPO Coated Metal is made from a flexible non-reinforced thermoplastic polyolefin membrane factory laminated to hot-dipped galvanized steel. Elevate UltraPly TPO Coated Metal can function as a flashing component for the Elevate UltraPly TPO System.

Method of Application

1. Install UltraPly TPO Coated Metal with 1/8" to 1/4" (3 to 6 mm) between adjoining sections.
2. Install 2" (50 mm) wide heat resistant tape over joints in UltraPly TPO Coated Metal.
3. Heat weld a 6" (150 mm) wide piece of UltraPly TPO Unsupported Flashing over the joint.
4. Robotic welds to UltraPly TPO Coated Metal must be at least 1 1/2" (40 mm) wide. Hand welds must be at least 2" (51 mm) wide.

Storage

Store material in original unopened packaging in a dry area away from sources of physical damage or chemical contamination.

Precautions

- Refer to Safety Data Sheets (SDS) for additional safety information.

LEED® Information

Post-Consumer Recycled Content: 22%

Post Industrial Recycled Content: 6%

Manufacturing Location: Taylor, PA

NOTE: LEED® is a registered trademark of the U.S. Green Building Council

Typical Properties

Properties	Value	Packaging
TPO Coating		Sheets: 10 Sheets per pallet Weight: 525-550 lb (238-250 kg) per pallet
Color	White, Gray, or Tan (HR)	
Thickness	0.032" (0.81 mm), tolerance $\pm .003$ "	
Sheet Metal		
Type	24-gauge G-90 hot dipped galvanized steel	
Thickness	0.023" (0.58 mm), tolerance .004", -0	
Length	10' (120 \pm $\frac{3}{4}$ "; 305 cm \pm 2 cm)	
Width	4' (48 \pm $\frac{1}{2}$ "; 122 cm \pm 1 cm)	

Please contact Holcim Technical Services at 800-428-4511 for further information.

This sheet is meant to highlight Elevate products and specifications and is subject to change without notice. Holcim takes responsibility for furnishing quality materials that meet published Elevate product specifications or other technical documents, subject to normal manufacturing tolerances. Neither Holcim nor its representatives practice architecture. Holcim offers no opinion on and expressly refuses any responsibility for the soundness of any structure. Holcim accepts no liability for structural failure or resultant damages. Consult a competent structural engineer prior to installation if the structural soundness or structural ability to properly support a planned installation is in question. No Holcim representative is authorized to vary this disclaimer.

Firestone, the brand of premier roofing, wall, and lining systems you know and trust, will be coming to you under a new name: Elevate. During our transition, products carrying the brand name **Firestone** will change to **Elevate** on product labels and packaging, Technical Information Sheets, and elsewhere. Only the brand name is changing. Our products remain the same.

For further information on our brand transition to Elevate, scan the code below with your smartphone, or visit our website: www.holcimelevate.com



BASE TIE-IN WITH HD OR HD PLUS SEAM PLATE FASTENED TO DECK

DETAIL NO.

UT-BT-01

MATERIAL: ULTRAPLY™ TPO

ACCEPTABLE SYSTEMS: ALL

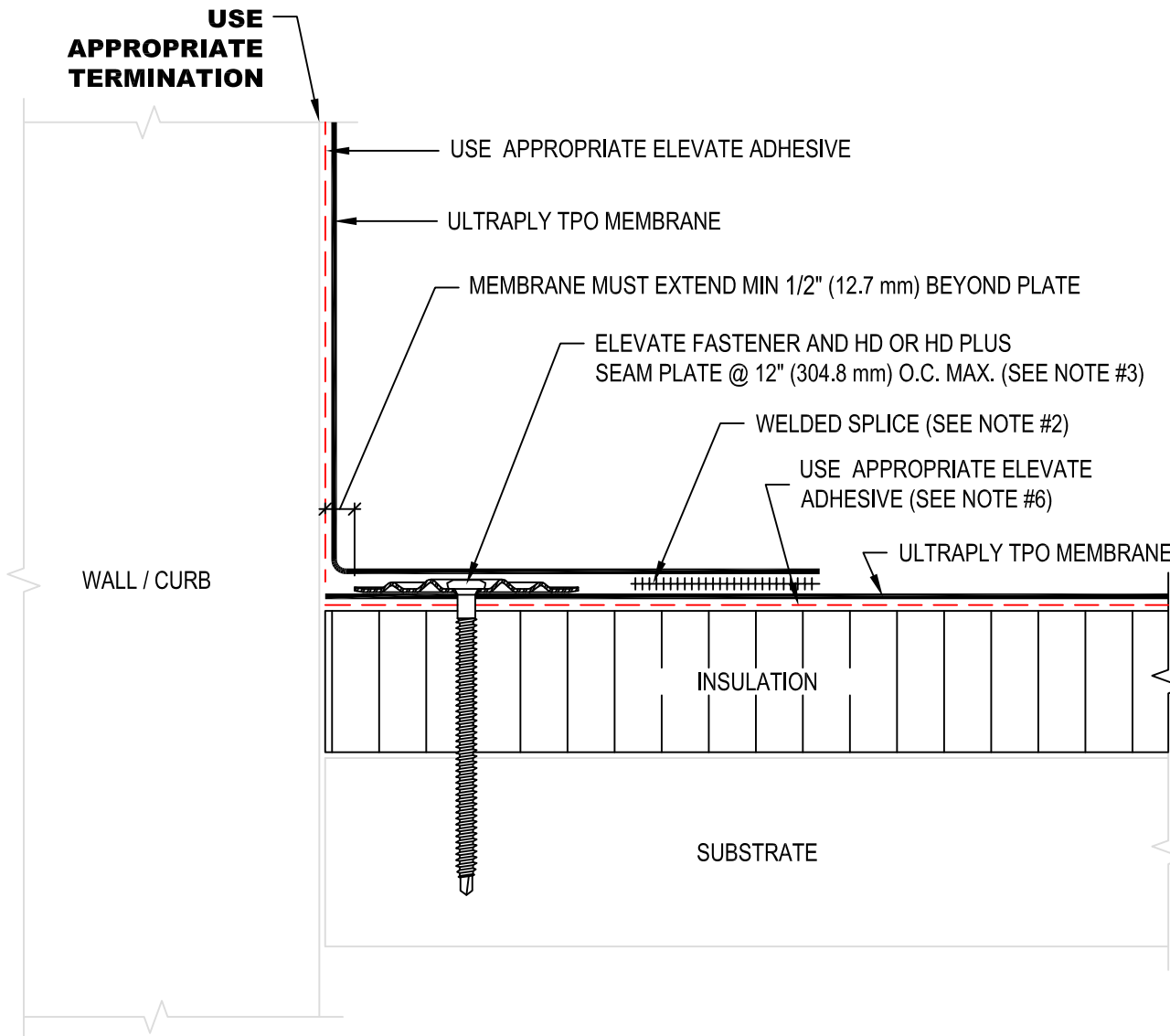
ISSUE / REVISION DATE:

(800) 428-4511 www.holdcimelevate.com

MAXIMUM WARRANTY: 20 YEARS

03/22/2023

NOT TO SCALE



NOTE:

1. REFER TO ELEVATE™ WEBSITE FOR MOST CURRENT INFORMATION.
2. REFER TO DETAIL UT-LS-01 OR UT-LS-02 FOR WELD WIDTH.
3. MAXIMUM 10" (254 MM) LONG FASTENERS (NOTE: WOOD BLOCKING MAY BE SUBSTITUTED FOR INSULATION TO REDUCE FASTENER LENGTH REQUIREMENTS).
4. IN CASE OF OBSTRUCTION REFER TO DETAIL UT-BT-05.
5. REFER TO UT-BT-16 & UT-BT-17 FOR MEMBRANE SECUREMENT AT CORNERS.
6. APPROPRIATE ADHESIVE REQUIRED BETWEEN MEMBRANE AND INSULATION FOR ADHERED SYSTEMS.
7. WHEN REINFORCEMENT OF TPO MEMBRANE IS EXPOSED, REFER TO UT-LS-14 FOR CUT EDGE SEALANT APPLICATION.



CUT EDGE SEALANT APPLICATION

DETAIL NO.
PKE-LS-8
NOT TO SCALE

MATERIAL: .080" PVC KEE

ACCEPTABLE SYSTEMS: ALL

ISSUE / REVISION DATE:

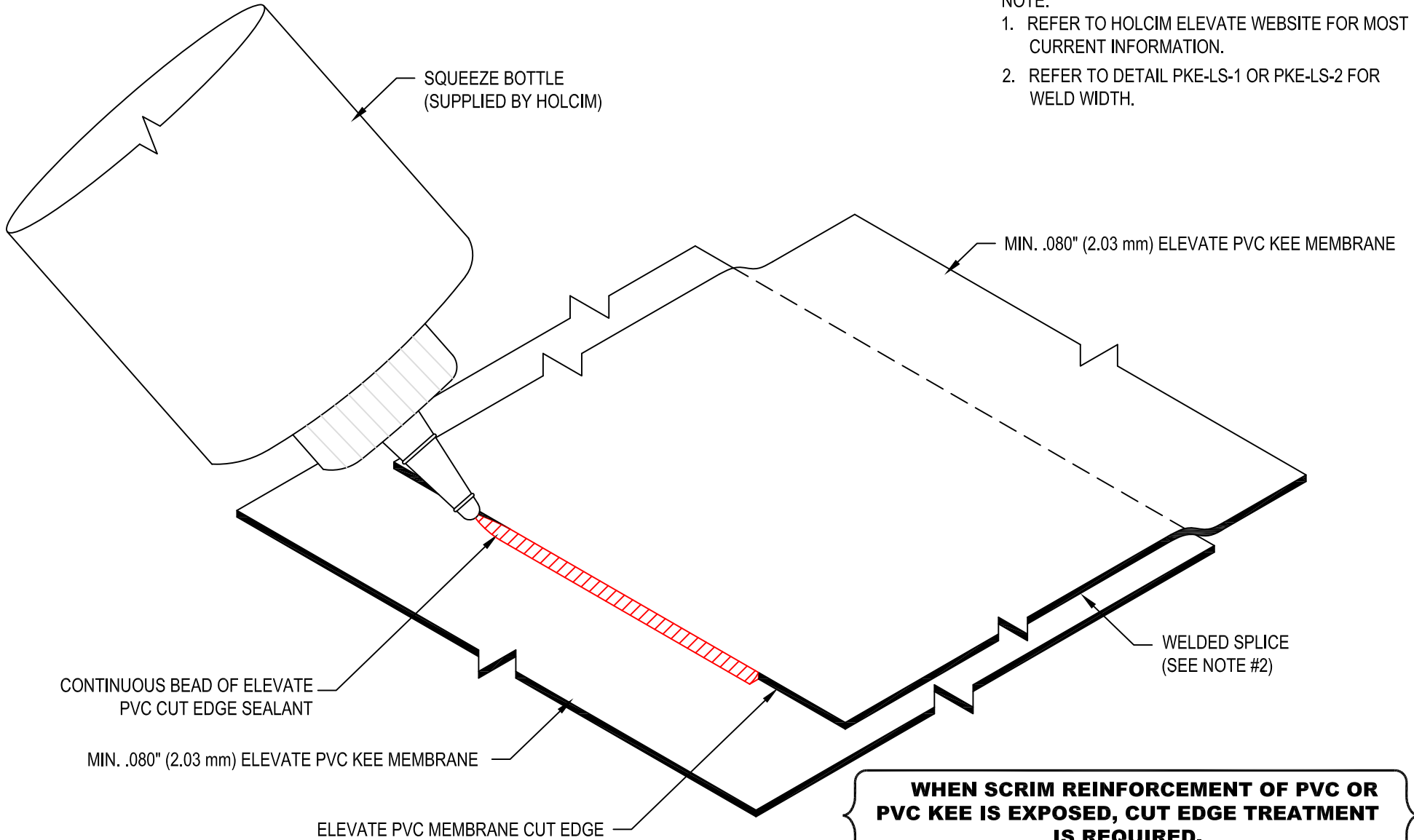
(800) 428-4511 www.holcimelevate.com

MAXIMUM WARRANTY: 30 YEARS

11/02/2022

NOTE:

1. REFER TO HOLCIM ELEVATE WEBSITE FOR MOST CURRENT INFORMATION.
2. REFER TO DETAIL PKE-LS-1 OR PKE-LS-2 FOR WELD WIDTH.



SQUEEZE BOTTLE
(SUPPLIED BY HOLCIM)

MIN. .080" (2.03 mm) ELEVATE PVC KEE MEMBRANE

WELDED SPLICE
(SEE NOTE #2)

CONTINUOUS BEAD OF ELEVATE
PVC CUT EDGE SEALANT

MIN. .080" (2.03 mm) ELEVATE PVC KEE MEMBRANE

ELEVATE PVC MEMBRANE CUT EDGE

**WHEN SCRIM REINFORCEMENT OF PVC OR
PVC KEE IS EXPOSED, CUT EDGE TREATMENT
IS REQUIRED.**

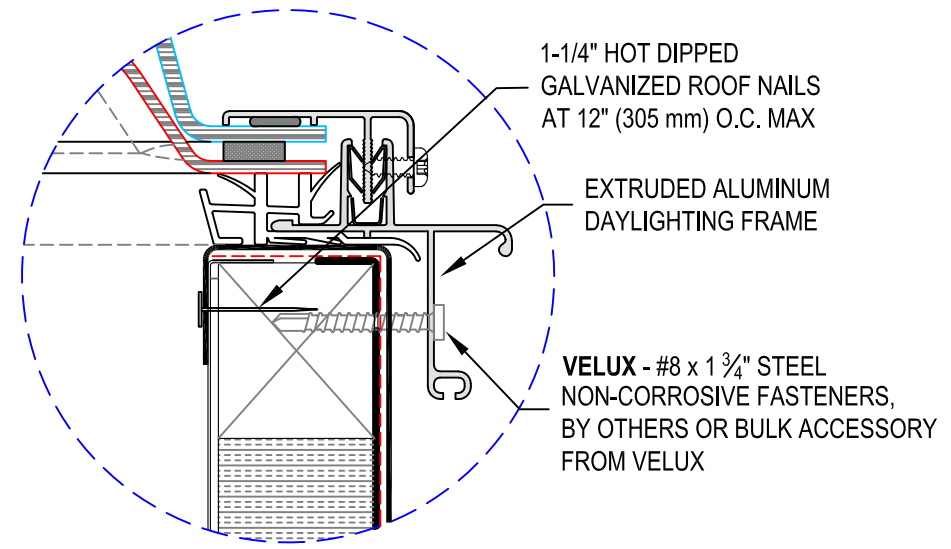
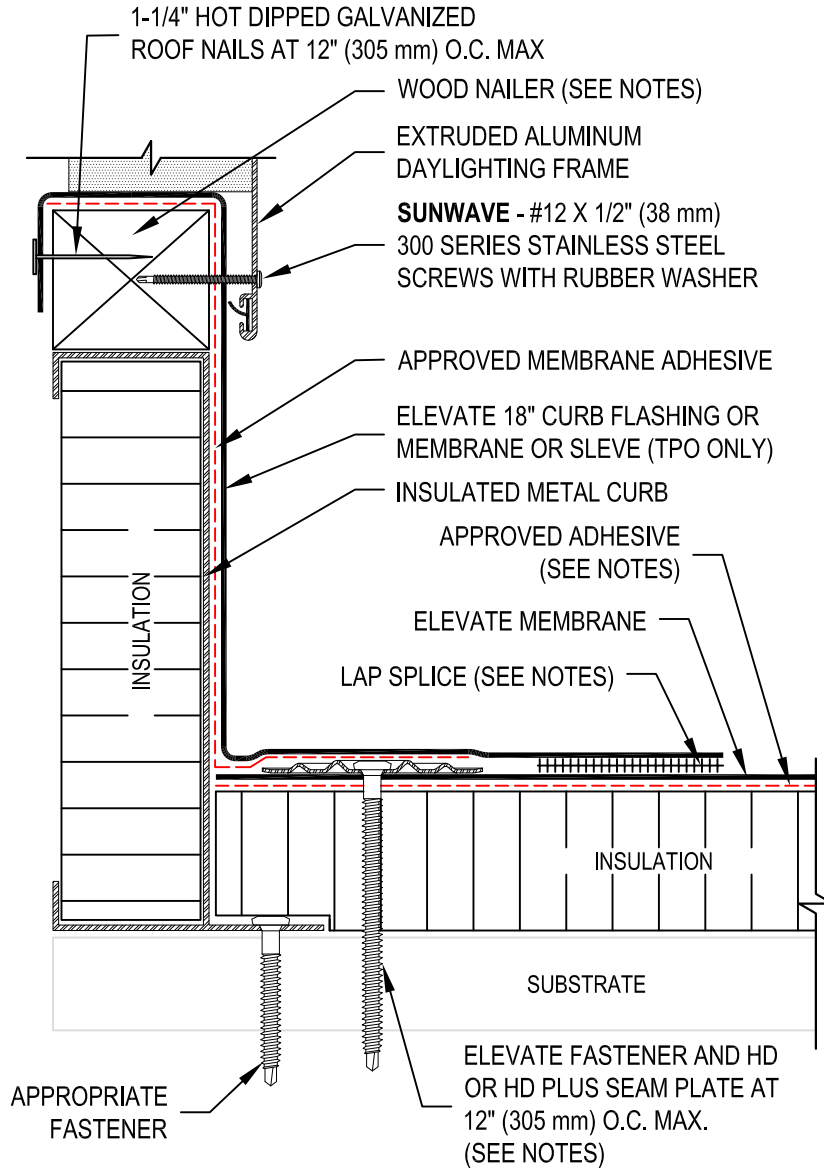
**FLASHING DETAIL AT INSULATED CURB
(UNIT FLANGE MOUNTED TO SUBSTRATE)**

DETAIL NO.
FS-DL-6
NOT TO SCALE

MATERIAL: SUNWAVE™ PRISMATIC SKYLIGHT
(800) 428-4511 www.holcimelevate.com

ACCEPTABLE SYSTEMS: ALL
MAXIMUM WARRANTY: 20 YEARS

ISSUE / REVISION DATE:
11/04/2022



NOTE:

1. REFER TO HOLCIM ELEVATE WEB SITE FOR MOST CURRENT INFORMATION.
2. NAILING AND METAL COUNTER FLASHING ARE NOT REQUIRED IF MEMBRANE IS RUN UP AND OVER CURB WALLS PRIOR TO INSTALLATION OF R.T.U. OR SKYLIGHT UNIT.
3. APPROVED ADHESIVE REQUIRED BETWEEN MEMBRANE AND INSULATION FOR FULLY ADHERED SYSTEMS.
4. WHEN REINFORCEMENT OF TPO MEMBRANE IS EXPOSED, REFER TO UT-LS-14.
5. INSTALL METAL WORK IN ACCORDANCE WITH CURRENT SMACNA RECOMMENDATIONS.
6. WOOD BLOCKING CAN BE USED BELOW CURB FLANGE (TO MATCH INSULATION THICKNESS) CAN BE SUBSTITUTED FOR STRUCTURAL CURB ATTACHMENT.
7. APPROVED WOOD CURBS CAN BE USED IN PLACE OF METAL CURBS.
8. REFER TO STANDARD ELEVATE DETAILS FOR CORNER FLASHING.

INSIDE CORNER

DETAIL NO.
PUT-C-05
NOT TO SCALE

MATERIAL: PLATINUM ULTRAPLY™ TPO

ACCEPTABLE SYSTEMS: ALL

ISSUE / REVISION DATE:

(800) 428-4511 www.holdcimelevate.com

MAXIMUM WARRANTY: 30 YEARS

10/25/2022

NOTE:

1. REFER TO THE ELEVATE™ WEBSITE FOR MOST CURRENT INFORMATION.
2. REFER TO DETAIL PUT-LS-02 OR PUT-LS-03 FOR WELD WIDTH.
3. WHEN REINFORCEMENT OF TPO MEMBRANE IS EXPOSED, REFER TO UT-LS-14 FOR CUT EDGE SEALANT APPLICATION.
4. SEE DETAIL PUT-C-01 FOR OUTSIDE CORNER DETAIL

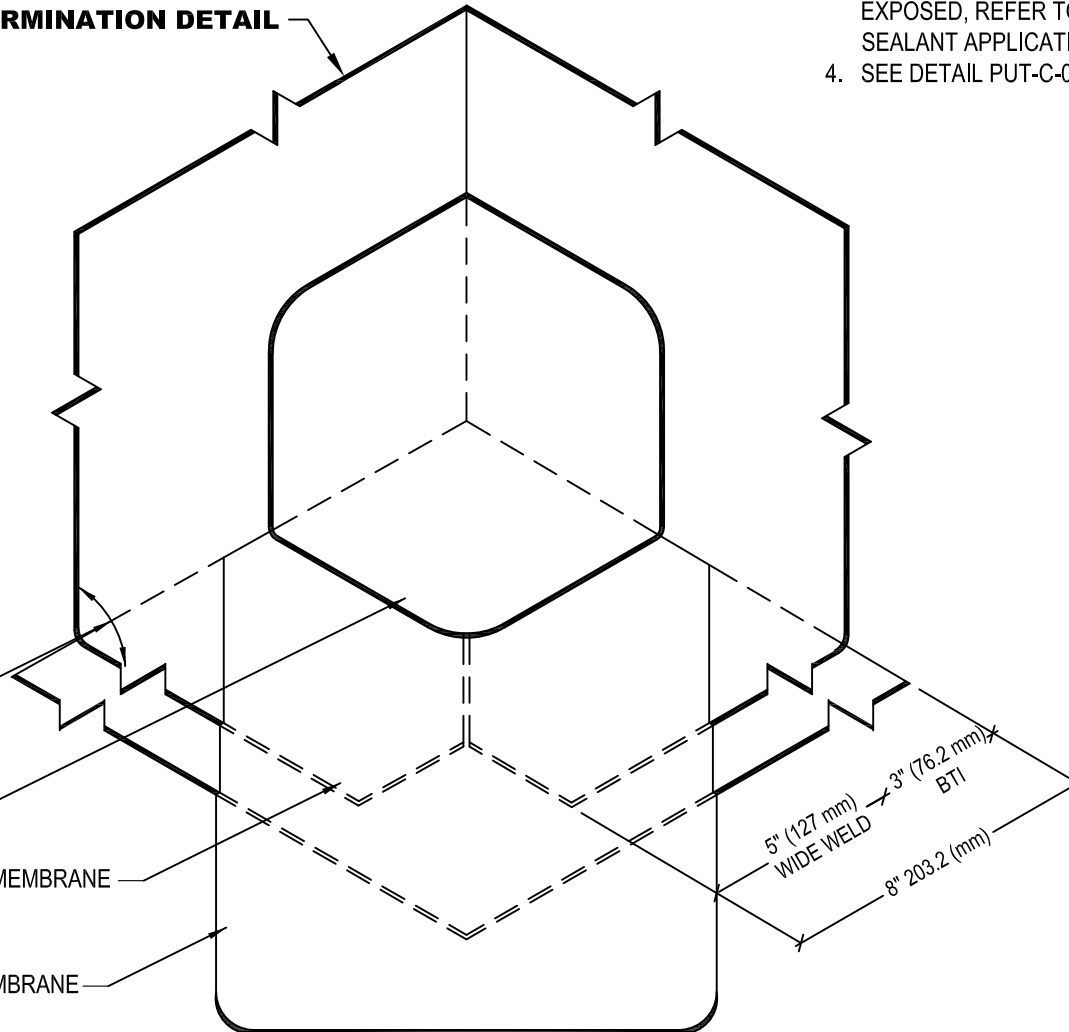
USE APPROPRIATE TERMINATION DETAIL

**USE APPROPRIATE
BASE TIE-IN DETAIL**

PRE-MOLDED PLATINUM TPO INSIDE/OUTSIDE
CORNER WELDED IN PLACE (SEE NOTE #2)

PLATINUM TPO MEMBRANE

ULTRAPLY TPO FLASHING MEMBRANE



OUTSIDE CORNER

DETAIL NO.
TPO-SA-C-01
NOT TO SCALE

MATERIAL: ULTRAPLY™ TPO SA
(800) 428-4511 www.holdcimelevate.com

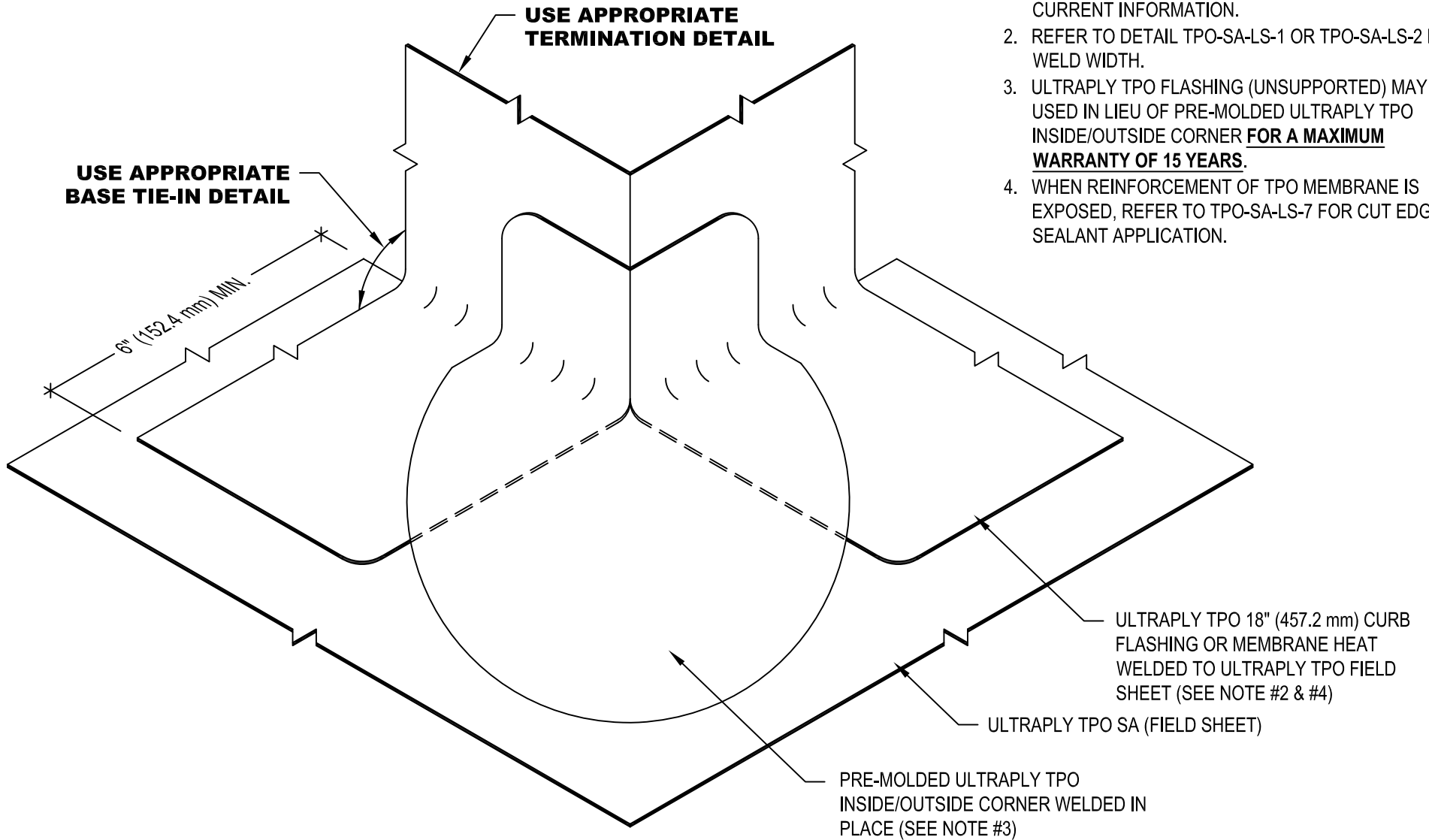
ACCEPTABLE SYSTEMS: SELF ADHERED

MAXIMUM WARRANTY: 20 YEARS

ISSUE / REVISION DATE:
03/17/2023

NOTE:

1. REFER TO ELEVATE™ WEBSITE FOR MOST CURRENT INFORMATION.
2. REFER TO DETAIL TPO-SA-LS-1 OR TPO-SA-LS-2 FOR WELD WIDTH.
3. ULTRAPLY TPO FLASHING (UNSUPPORTED) MAY BE USED IN LIEU OF PRE-MOLDED ULTRAPLY TPO INSIDE/OUTSIDE CORNER **FOR A MAXIMUM WARRANTY OF 15 YEARS.**
4. WHEN REINFORCEMENT OF TPO MEMBRANE IS EXPOSED, REFER TO TPO-SA-LS-7 FOR CUT EDGE SEALANT APPLICATION.



MEMBRANE SECUREMENT AT INSIDE CORNER

DETAIL NO.
UT-BT-17
NOT TO SCALE

MATERIAL: ULTRAPLY™ TPO

ACCEPTABLE SYSTEMS: ALL

ISSUE / REVISION DATE:

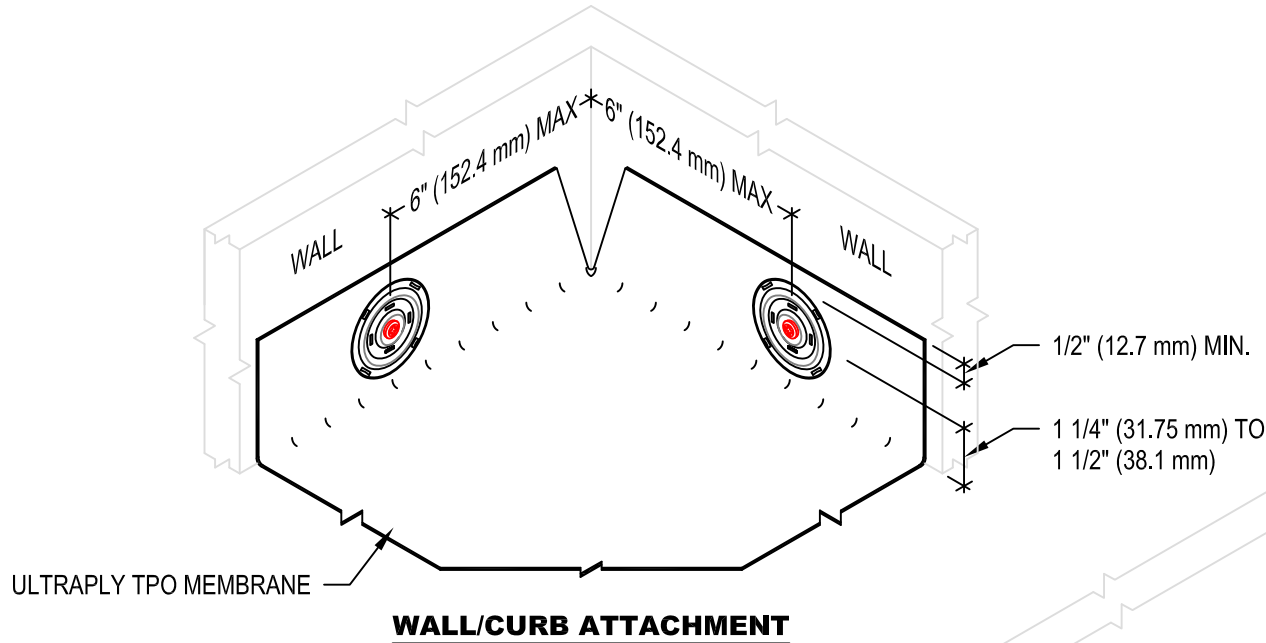
(800) 428-4511 www.holdcimelevate.com

MAXIMUM WARRANTY: 20 YEARS

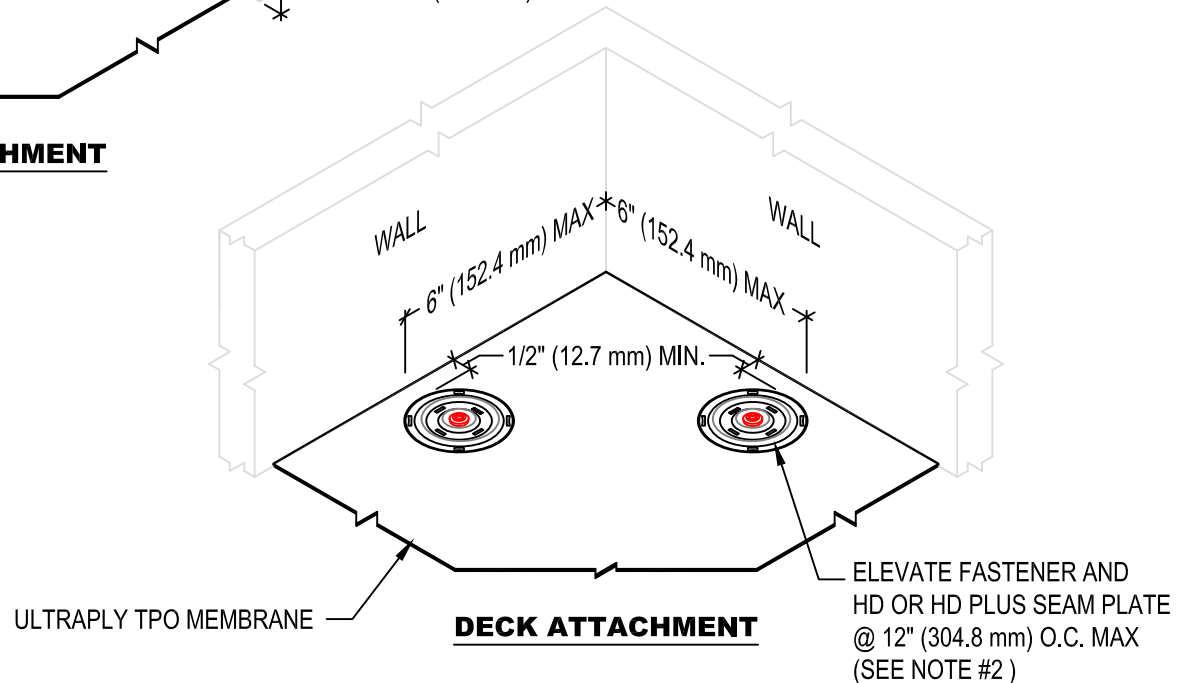
03/22/2023

NOTE:

1. REFER TO ELEVATE™ WEBSITE FOR MOST CURRENT INFORMATION.
2. MAXIMUM 10" (254 mm) LONG FASTENERS
NOTE: WOOD BLOCKING MAY BE SUBSTITUTED FOR INSULATION TO REDUCE FASTENER LENGTH REQUIREMENTS.



BASE FLASHING AND TERMINATION NOT SHOWN FOR CLARITY. REFER TO APPROPRIATE TERMINATION & BASE TIE-IN DETAILS.



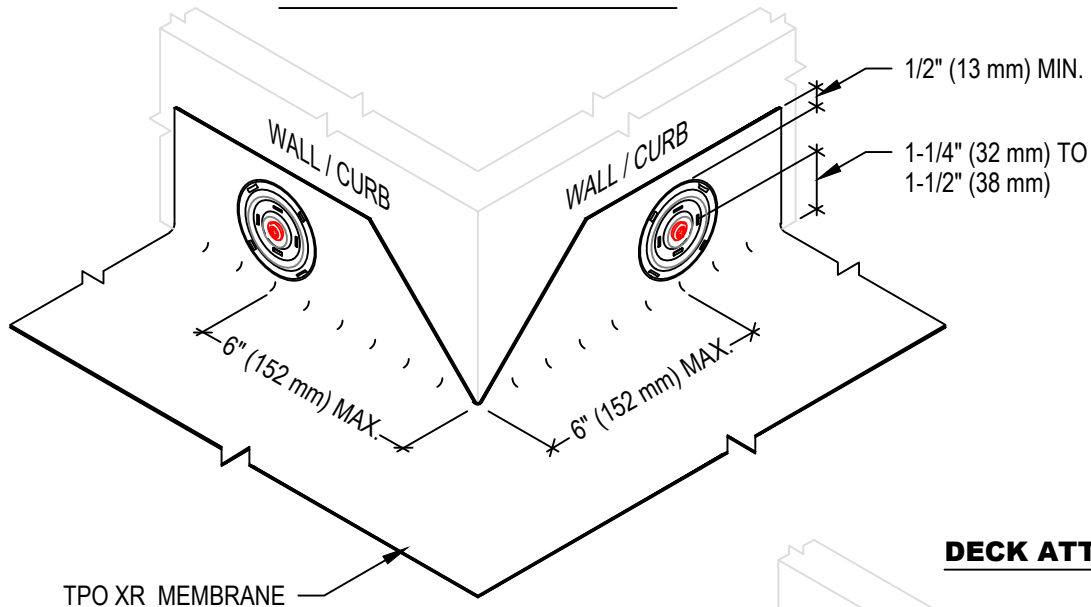
MEMBRANE SECUREMENT AT OUTSIDE CORNER

MATERIAL: ULTRAPLY™ TPO XR
(800) 428-4511 www.holcimelevate.com

ACCEPTABLE SYSTEMS: TPO XR
MAXIMUM WARRANTY: 20 YEARS

ISSUE / REVISION DATE:
10/20/2022

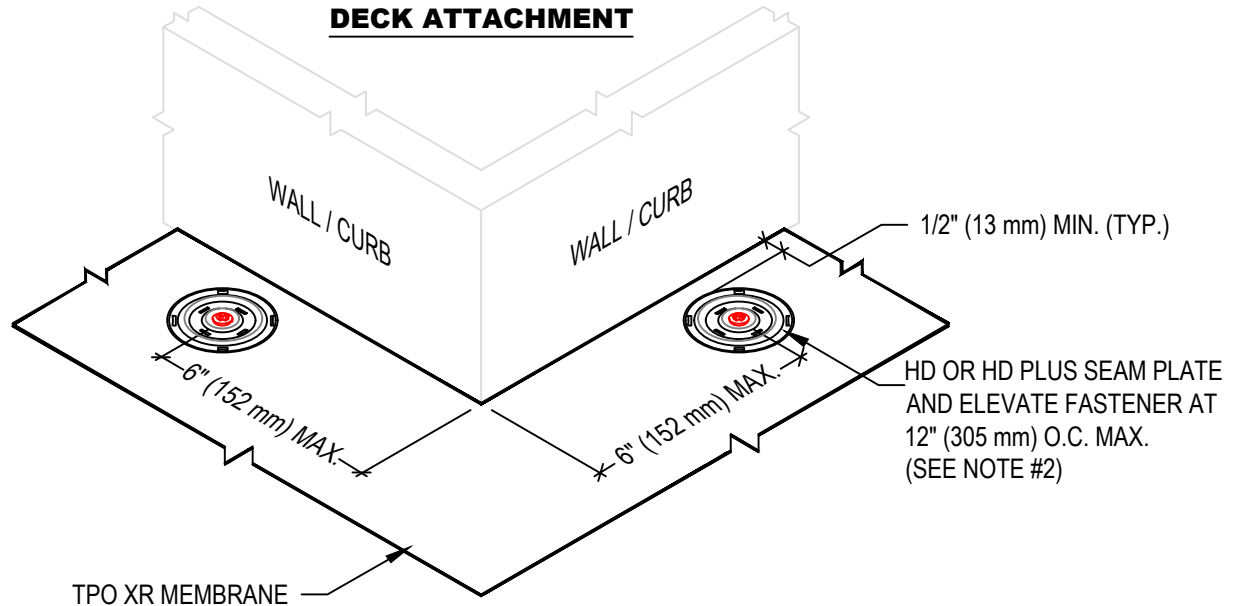
WALL/CURB ATTACHMENT



NOTE:

1. REFER TO HOLCIM ELEVATE WEBSITE FOR MOST CURRENT INFORMATION.
2. MAXIMUM 10" (254 mm) LONG FASTENERS. (NOTE: WOOD BLOCKING MAY BE SUBSTITUTED FOR INSULATION TO REDUCE FASTENER LENGTH REQUIREMENT).

DECK ATTACHMENT



BASE FLASHINGS AND TERMINATIONS NOT SHOWN FOR CLARITY. REFER TO APPROPRIATE TERMINATION & BASE TIE-IN DETAILS.

PENETRATION WITH ULTRAPLY TPO UNIVERSAL PIPE FLASHING

DETAIL NO.
UT-P-02
NOT TO SCALE

MATERIAL: ULTRAPLY™ TPO

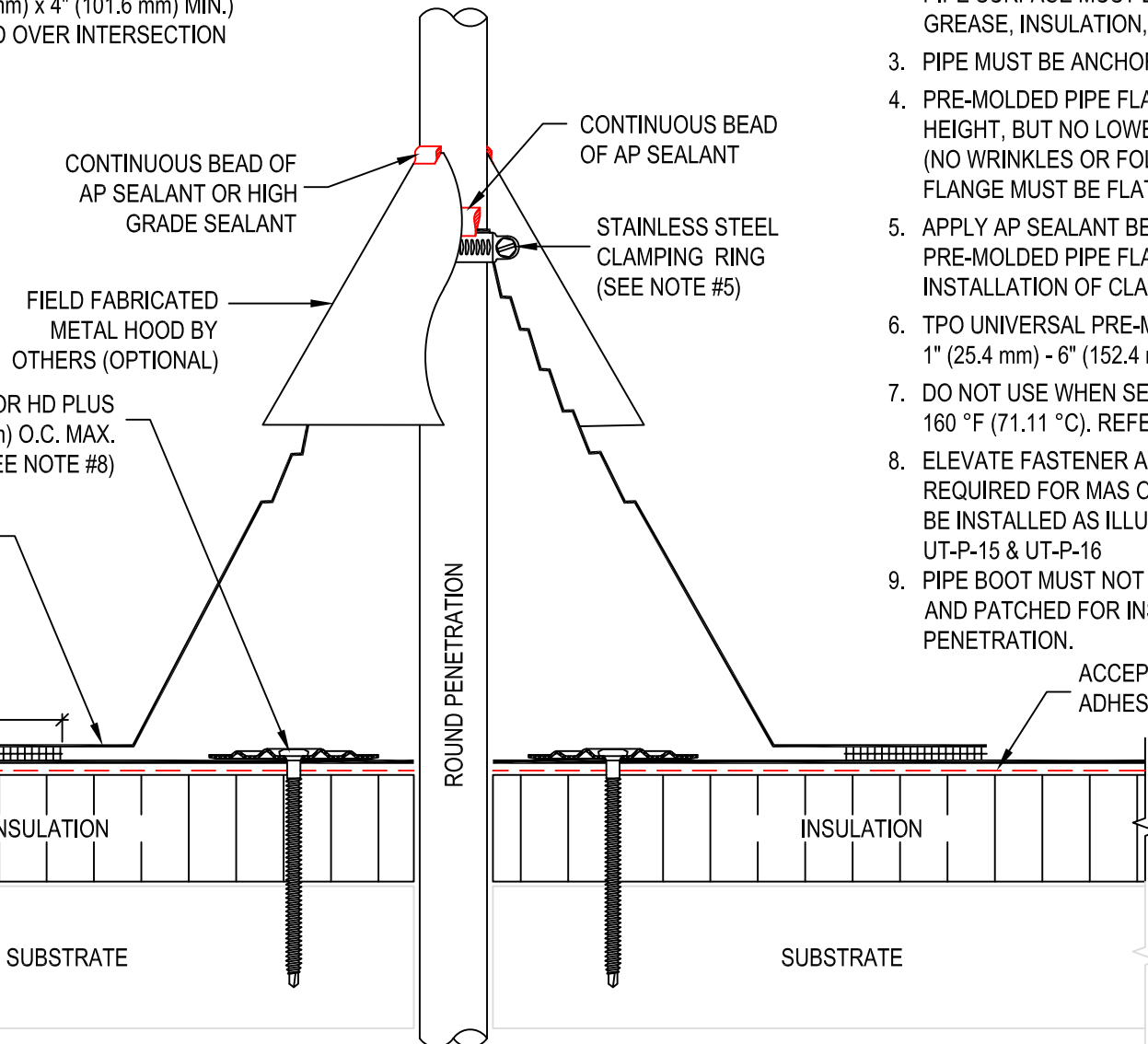
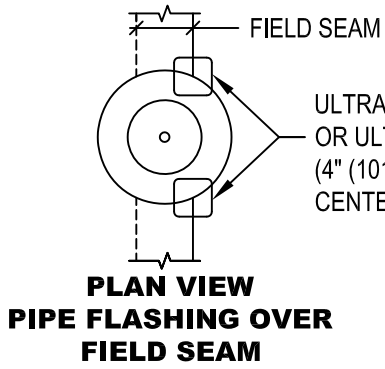
ACCEPTABLE SYSTEMS: ALL

ISSUE / REVISION DATE:

(800) 428-4511 www.holdcimelevate.com

MAXIMUM WARRANTY: 20 YEARS

10/19/2022



NOTE:

1. REFER TO THE ELEVATE™ WEBSITE FOR THE MOST CURRENT INFORMATION.
2. REMOVE ALL EXISTING FLASHING, LEAD, ETC. PIPE SURFACE MUST BE FREE OF ALL RUST, GREASE, INSULATION, ETC.
3. PIPE MUST BE ANCHORED TO ENSURE STABILITY.
4. PRE-MOLDED PIPE FLASHING MAY BE CUT TO HEIGHT, BUT NO LOWER THAN REINFORCING RING (NO WRINKLES OR FOLDS UNDER CLAMPING RING, FLANGE MUST BE FLAT).
5. APPLY AP SEALANT BETWEEN PENETRATION AND PRE-MOLDED PIPE FLASHING PRIOR TO INSTALLATION OF CLAMPING RING.
6. TPO UNIVERSAL PRE-MOLDED PIPE FLASHING FITS 1" (25.4 mm) - 6" (152.4 mm) PENETRATIONS SIZES.
7. DO NOT USE WHEN SERVICE LINE TEMP. EXCEEDS 160 °F (71.11 °C). REFER TO UT-P-06 & UT-P-07.
8. ELEVATE FASTENER AND HD SEAM PLATE REQUIRED FOR MAS ONLY. IF FASTENER CANNOT BE INSTALLED AS ILLUSTRATED, REFER TO DETAILS UT-P-15 & UT-P-16
9. PIPE BOOT MUST NOT BE TWISTED, CUPPED OR CUT AND PATCHED FOR INSTALLATION OF PENETRATION.

ACCEPTABLE ELEVATE MEMBRANE ADHESIVE (ADHERED SYSTEM ONLY)

FLASHING LAP SPLICE WITH WELDED T-JOINT COVER AND ANGLE CHANGE PATCH

DETAIL NO.
UT-LS-12
NOT TO SCALE

MATERIAL: ULTRAPLY™ TPO

ACCEPTABLE SYSTEMS: ALL

ISSUE / REVISION DATE:

(800) 428-4511 www.holdcimelevate.com

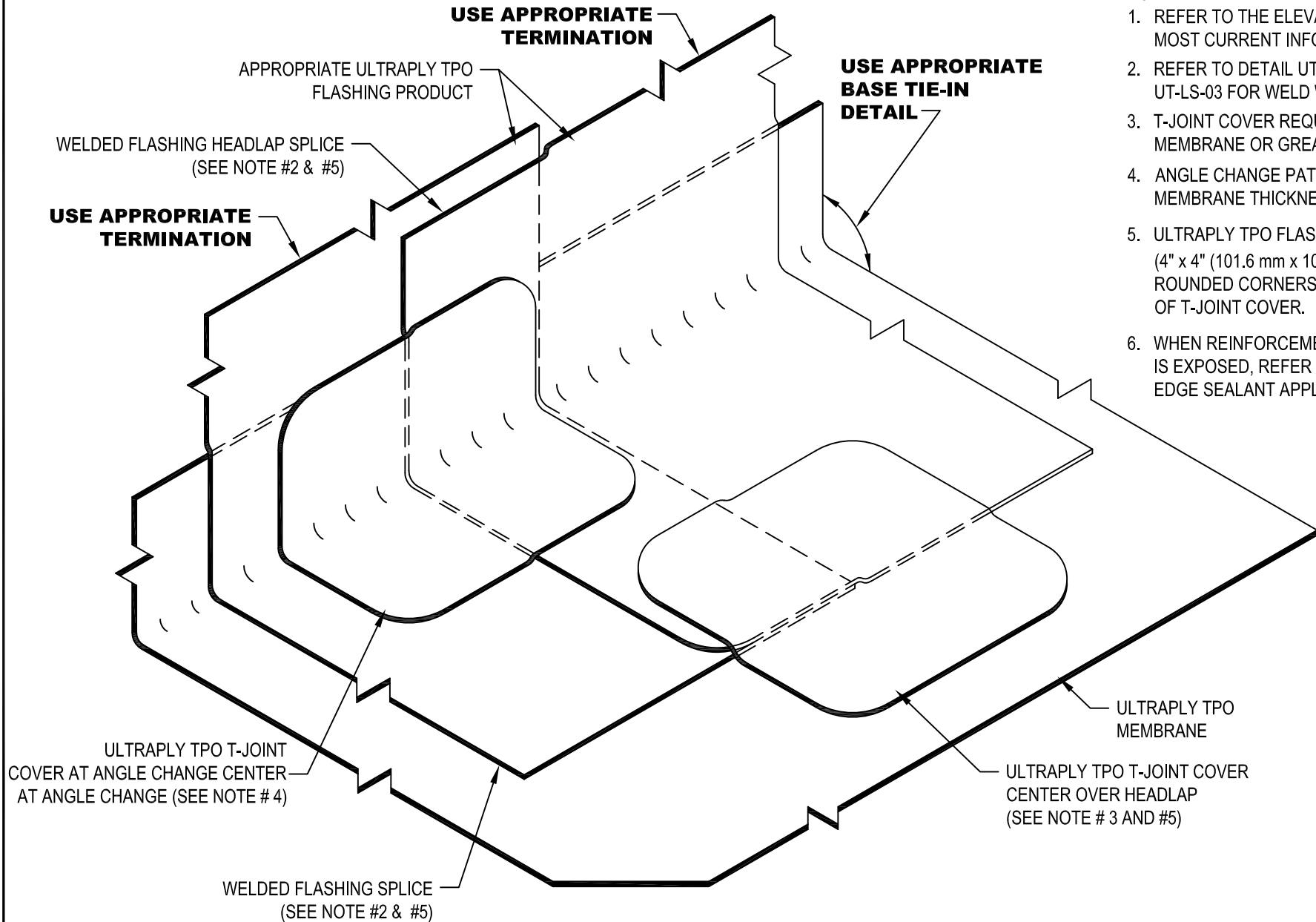
MAXIMUM WARRANTY: 20 YEARS

10/19/2022

NOT TO SCALE

NOTE:

1. REFER TO THE ELEVATE™ WEBSITE FOR MOST CURRENT INFORMATION.
2. REFER TO DETAIL UT-LS-01, UT-LS-02, OR UT-LS-03 FOR WELD WIDTH.
3. T-JOINT COVER REQUIRED FOR .060 GAUGE MEMBRANE OR GREATER.
4. ANGLE CHANGE PATCH REQUIRED FOR ALL MEMBRANE THICKNESS.
5. ULTRAPLY TPO FLASHING (UNSUPPORTED) (4" x 4" (101.6 mm x 101.6 mm) MIN. WITH ROUNDED CORNERS) MAY BE USED IN LIEU OF T-JOINT COVER.
6. WHEN REINFORCEMENT OF TPO MEMBRANE IS EXPOSED, REFER TO UT-LS-14 FOR CUT EDGE SEALANT APPLICATION.



THRU-WALL SCUPPER WITH ULTRAPLY TPO COATED METAL

DETAIL NO.
UT-S-05
NOT TO SCALE

MATERIAL: ULTRAPLY™ TPO

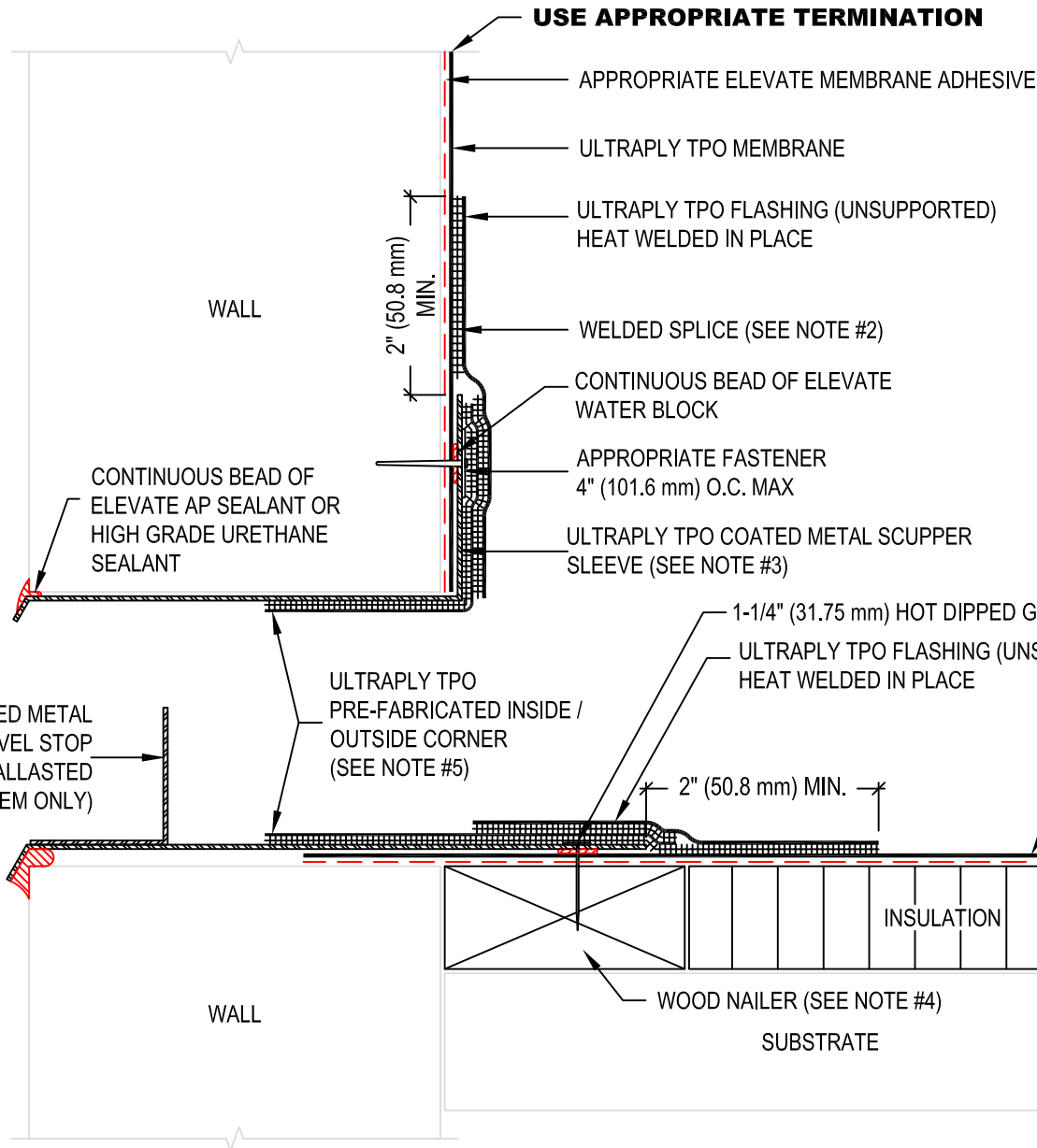
ACCEPTABLE SYSTEMS: ALL

ISSUE / REVISION DATE:

(800) 428-4511 www.holdcimelevate.com

MAXIMUM WARRANTY: 20 YEARS

10/18/2022



NOTE:

1. REFER TO THE ELEVATE™ WEBSITE FOR THE MOST CURRENT INFORMATION.
2. REFER TO DETAIL UT-LS-01 & UT-LS-02 FOR WELD WIDTH.
3. ROUND ALL SHEET METAL FLANGE CORNERS.
4. WOOD NAILER MUST BE INSTALLED TO MEET APPLICABLE BUILDING CODES.
5. ULTRAPLY TPO FLASHING (UNSUPPORTED) MAY BE USED IN LIEU OF PRE-MOLDED ULTRAPLY TPO CORNER **FOR A MAXIMUM WARRANTY OF 15 YEARS.**
6. FLANGE OF METAL MUST BE FULLY SUPPORTED BY WOOD AND TERMINATED AT LEAST 1/2" (12.7 mm) FROM EDGE OF WOOD.
7. SEE UT-S-05A & UT-S-05B FOR DETAILED INSTALLATION INSTRUCTION.

1-1/4" (31.75 mm) HOT DIPPED GALVANIZED ROOF NAILS @ 4" (101.6 mm) O.C. MAX.

ULTRAPLY TPO FLASHING (UNSUPPORTED) HEAT WELDED IN PLACE

ULTRAPLY TPO MEMBRANE

APPROPRIATE ELEVATE MEMBRANE ADHESIVE (ADHERED SYSTEM ONLY)

INSULATION

WOOD NAILER (SEE NOTE #4)

SUBSTRATE



LAP SPLICE WITH LAP UNDER FIELD SEAM USING T-JOINT COVER

DETAIL NO.

TPO-SA-LS-03

MATERIAL: ULTRAPLY™ TPO SA

ACCEPTABLE SYSTEMS: SELF ADHERED

ISSUE / REVISION DATE:

(800) 428-4511 www.holdcimelevate.com

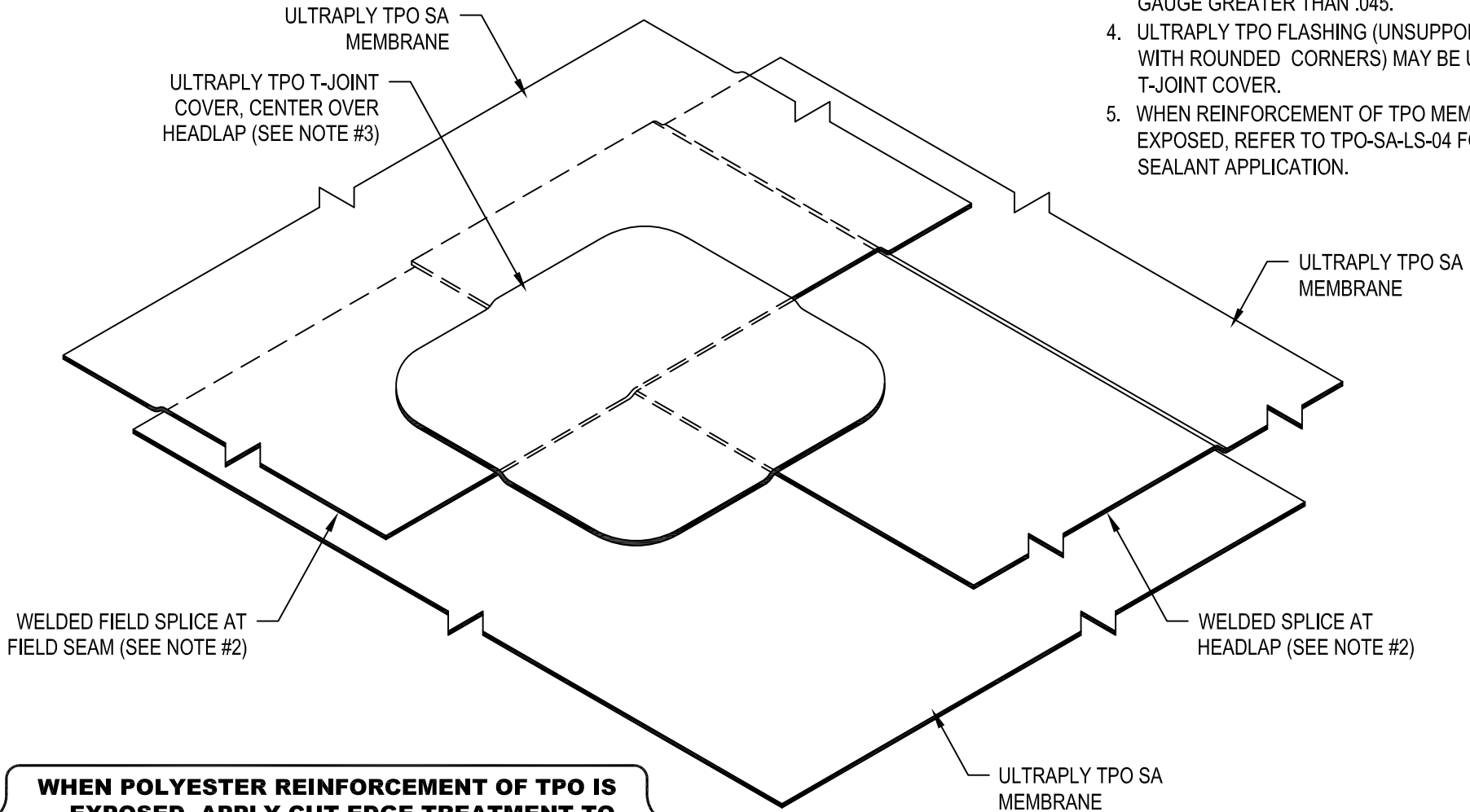
MAXIMUM WARRANTY: 20 YEARS

03/20/2023

NOT TO SCALE

NOTE:

1. REFER TO THE ELEVATE™ WEBSITE FOR THE MOST CURRENT INFORMATION.
2. REFER TO DETAIL TPO-SA-LS-01 FOR WELD WIDTH.
3. T-JOINT COVER REQUIRED FOR MEMBRANE WITH A GAUGE GREATER THAN .045.
4. ULTRAPLY TPO FLASHING (UNSUPPORTED) (4" x 4" MIN. WITH ROUNDED CORNERS) MAY BE USED IN LIEU OF T-JOINT COVER.
5. WHEN REINFORCEMENT OF TPO MEMBRANE IS EXPOSED, REFER TO TPO-SA-LS-04 FOR CUT EDGE SEALANT APPLICATION.



WHEN POLYESTER REINFORCEMENT OF TPO IS EXPOSED, APPLY CUT EDGE TREATMENT TO ENTIRE EXPOSED EDGE. REFER TO TPO-SA-LS-04.

PRRF20230760



ULTRAPLY TPO WALKWAY PAD

DETAIL NO.
UT-M-01
NOT TO SCALE

MATERIAL: ULTRAPLY™ TPO

ACCEPTABLE SYSTEMS: ALL

ISSUE / REVISION DATE:

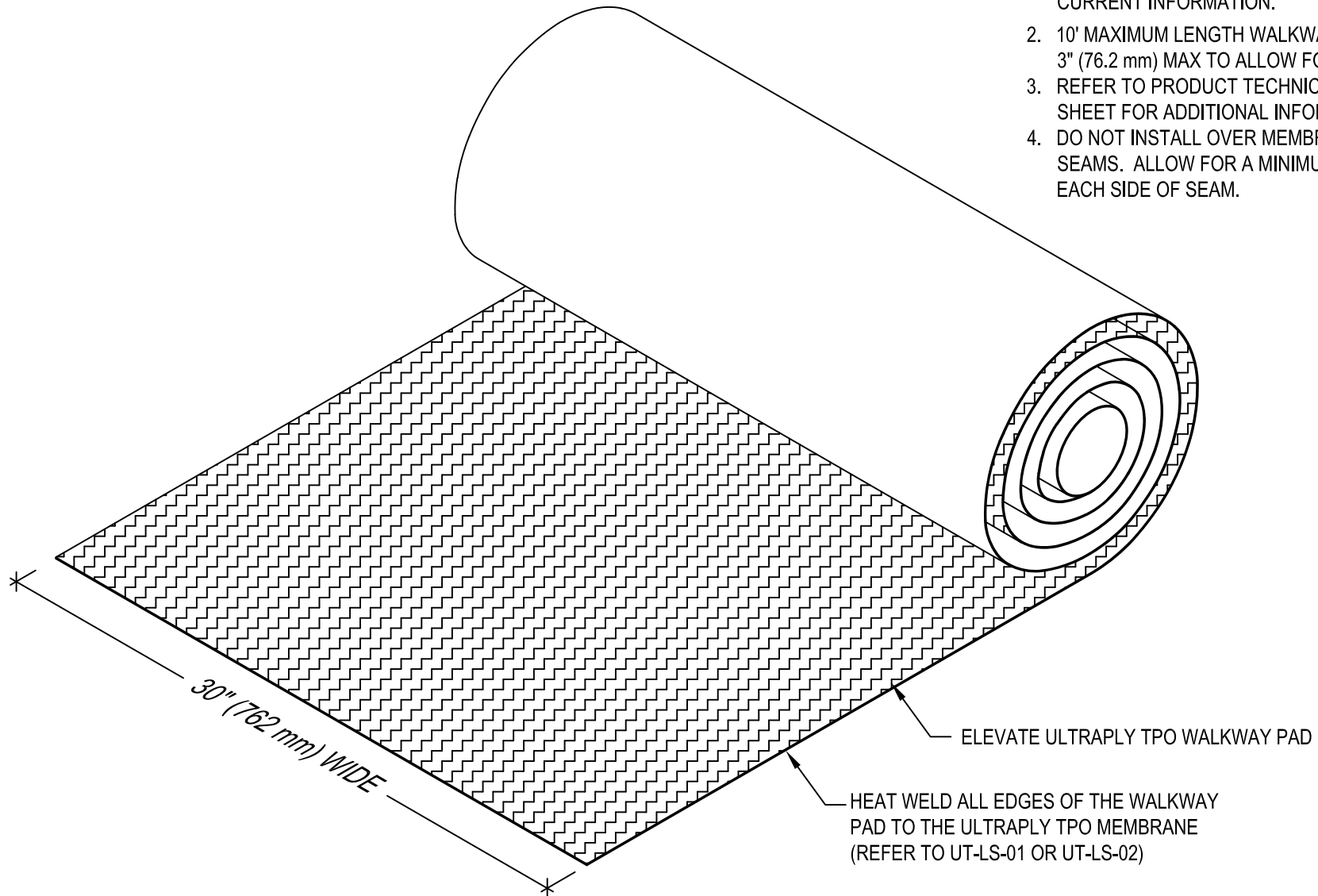
(800) 428-4511 www.holdcimelevate.com

MAXIMUM WARRANTY: N/A

04/04/2023

NOTE:

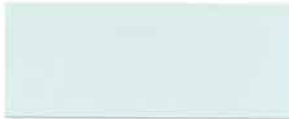
1. REFER TO THE ELEVATE™ WEBSITE FOR MOST CURRENT INFORMATION.
2. 10' MAXIMUM LENGTH WALKWAY SECTIONS, SPACED 3" (76.2 mm) MAX TO ALLOW FOR DRAINAGE.
3. REFER TO PRODUCT TECHNICAL INFORMATION SHEET FOR ADDITIONAL INFORMATION.
4. DO NOT INSTALL OVER MEMBRANE OR FLASHING SEAMS. ALLOW FOR A MINIMUM 3" (76.2 mm) GAP ON EACH SIDE OF SEAM.





Metal Systems Color Availability

UNA-CLAD™ METAL PANEL COLOR SELECTION GUIDE



Stone White



Bone White



Almond



Sandstone



Slate Gray



Cityscape



Charcoal Gray



Sierra Tan



Medium Bronze



Dark Bronze



Extra Dark Bronze



Matte Black



Brandywine



Colonial Red



Terra Cotta



Mansard Brown



Regal Red



Award Blue



Sky Blue



Electric Blue



Regal Blue



Teal



Patina Green



Dark Ivy



Sherwood Green



Hartford Green



Hemlock Green



Tropical Patina



Silver Metallic



Classic Copper



Champagne Metallic

Firestone
BUILDING PRODUCTS
NOBODY COVERS YOU BETTER.™



EMERGENCY CONTACT LIST

The employees listed below are the emergency contact for the Kroger project located in Chehalis, WA

Project Manager: Taylor Brill (360) 560-9284
taylor@weatherguardinc.net

Safety Coordinator: Michael Ballou (360) 957-8948
michael@weatherguardinc.net

Site Foreman: Juan Roman (360) 957-8354

Weatherguard Office: (360) 577-7200

Weatherguard offers a 24 hour answering service that can contact Kelly Sherrell and Todd Wilson in case of after hour emergency's by phone and email.