

Project Title:  
**COASTAL PACIFIC  
FOOD DISTRIBUTION  
PUYALLUP**

Client:  
1942 NORTHWOOD DRIVE  
SALISBURY, MARYLAND 21801  
MATT SMITH

Project No.  
2230491.40

Issue Set & Date:  
**ISSUE FOR PERMIT  
(REVISION A)**  
05/15/2024



NOTICE  
ALTERATION OF THIS DOCUMENT SHALL INVALIDATE THE PROFESSIONAL SEAL AND SIGNATURE. PUBLICATION OF THIS DOCUMENT DOES NOT GUARANTEE THAT THE DESIGNER HAS BEEN ADVISED OF ANY CHANGES TO THE ORIGINAL DESIGN OR THAT THE DESIGNER HAS BEEN ADVISED OF ANY CHANGES TO THE ORIGINAL DESIGN OR THAT THE DESIGNER HAS BEEN ADVISED OF ANY CHANGES TO THE ORIGINAL DESIGN.

Revisions:  
Sheet Title:  
**COVER PAGE**

Designed by: MAM/AG Drawn by: MAM/AG Checked by: CS

Sheet No.  
**L0.00**  
1 of 12 Sheets

**ABBREVIATIONS**

ABV	ABOVE	PA	PLANTING AREA
ADJ	ADJACENT	PC	PORTLAND CEMENT/PRECAST CONCRETE
ALT	ALTERNATE	PL	PROPERTY LINE
ALN	ALIGN	POLY	POLYETHYLENE
APPRX	APPROXIMATE	PT	PRESSURE TREATED
ARCH	ARCHITECTURAL	PVC	POLYVINYL CHLORIDE
ASPH	ASPHALT	QTY	QUANTITY
ASTM	AMERICAN SOCIETY FOR TESTING AND MATERIALS	QUAL	QUALITY
BIO	BIO-INFILTRATION	RAD/r	RADIUS
BM	BENCH MARK	RD	ROOF DRAIN
BLDG	BUILDING	REBAR	REINFORCING BAR
BO	BY OTHERS	REF	REFER OR REFERENCE
BOT	BOTTOM	REINF	REINFORCED / REINFORCING
BS	BOTH SIDES	REM	REMOVE
		REPL	REPLACE
		REQD	REQUIRED
CAL	CALIPER	REV	REVISE / REVISION
CB	CATCH BASIN	ROW	RIGHT-OF-WAY LINE
CFCI	CONTRACTOR FURNISHED		
	CONTRACTOR INSTALLED	SCH	SCHEDULE
CI	CAST IRON	SD	STORM DRAIN
CIPC	CAST-IN-PLACE CONCRETE	SECT	SECTION
CJ	CONTROL JOINT	SPEC	SPECIFICATION
CL	CENTERLINE	SQ	SQUARE
CLR	CLEAR	SS	STAINLESS STEEL
CMU	CONCRETE MASONRY UNIT	ST	STONE
CO	CLEAN OUT	STA	STATION
COL	COLUMN	STD	STANDARD
CONC	CONCRETE	STL	STEEL
CONST	CONSTRUCTION	SYM	SYMMETRICAL
CONT	CONTINUOUS	SHT	SHEET
CP	COORDINATES POINT / CENTER POINT	STRUCT	STRUCTURAL
CTR	CENTER	S/W	SIDEWALK
		T	TREAD / THICK
DBL	DOUBLE	TC	TOP OF CURB
DBH	DIAMETER AT BREAST HEIGHT	TEMP	TEMPORARY
DEMO	DEMOLISH / DEMOLITION	THK	THICKNESS
DET	DETAIL	TOC	TOP OF CONCRETE
DIA	DIAMETER	TOS	TOP OF SLAB/ STEEL
DIM	DIMENSION	TOW/TW	TOP OF WALL
DS	DOWNSPOUT	TYP	TYPICAL
DWG	DRAWING		
EA	EACH	UNO	UNLESS NOTED OTHERWISE
EJ	EXPANSION JOINT		
ELEC	ELECTRICAL	V	VENT / VOLT/ VALVE
ELEV	ELEVATION	(V)	VERIFY
ENCL	ENCLOSURE	VERT	VERTICAL
EOP	EDGE OF PAVEMENT	VOL	VOLUME
EQUIP	EQUIPMENT		
EW	EACH WAY	XFMR	TRANSFORMER
EXIST	EXISTING		
		&	AND
FBO	FURNISHED BY OWNER	<	ANGLE
FDC	FIRE DEPARTMENT CONNECTION	@	AT
FG	FINISH GRADE	¢	CENTERLINE
FOC	FACE OF CONCRETE	¢	PROPERTY LINE
FOW	FACE OF WALL	∅	DIAMETER
FS	FINISHED SURFACE	±	PLUS OR MINUS
FTG	FOOTING	#	NUMBER
FURN	FURNITURE/ FURNISHED		
GAL	GALLON		
GA	GAUGE		
GALV	GALVANIZED		
GC	GENERAL CONTRACTOR		
GND	GROUND		
GV	GATE VALVE		
HOR	HORIZONTAL		
HR	HOUR		
HT/H	HEIGHT / HIGH		
HVAC	HEATING, VENTILATING & AIR CONDITIONING		
ID	INSIDE DIAMETER		
INCL	INCLUDING		
INFO	INFORMATION		
INT	INTERIOR		
MAS	MASONRY		
MAT	MATERIAL		
MAX	MAXIMUM		
MECH	MECHANICAL		
MED	MEDIUM		
MET/MTL	METAL		
MFR	MANUFACTURER		
MH	MANHOLE		
MIN	MINIMUM		
MISC	MISCELLANEOUS		
MIX	MIXTURE		
N	NORTH		
N/A	NOT APPLICABLE		
NIC	NOT IN CONTRACT		
NO	NUMBER		
NOM	NOMINAL		
NTS	NOT TO SCALE		
OC	ON CENTER		
OD	OUTSIDE DIAMETER		
OH	OVERHEAD		

**GENERAL NOTES**

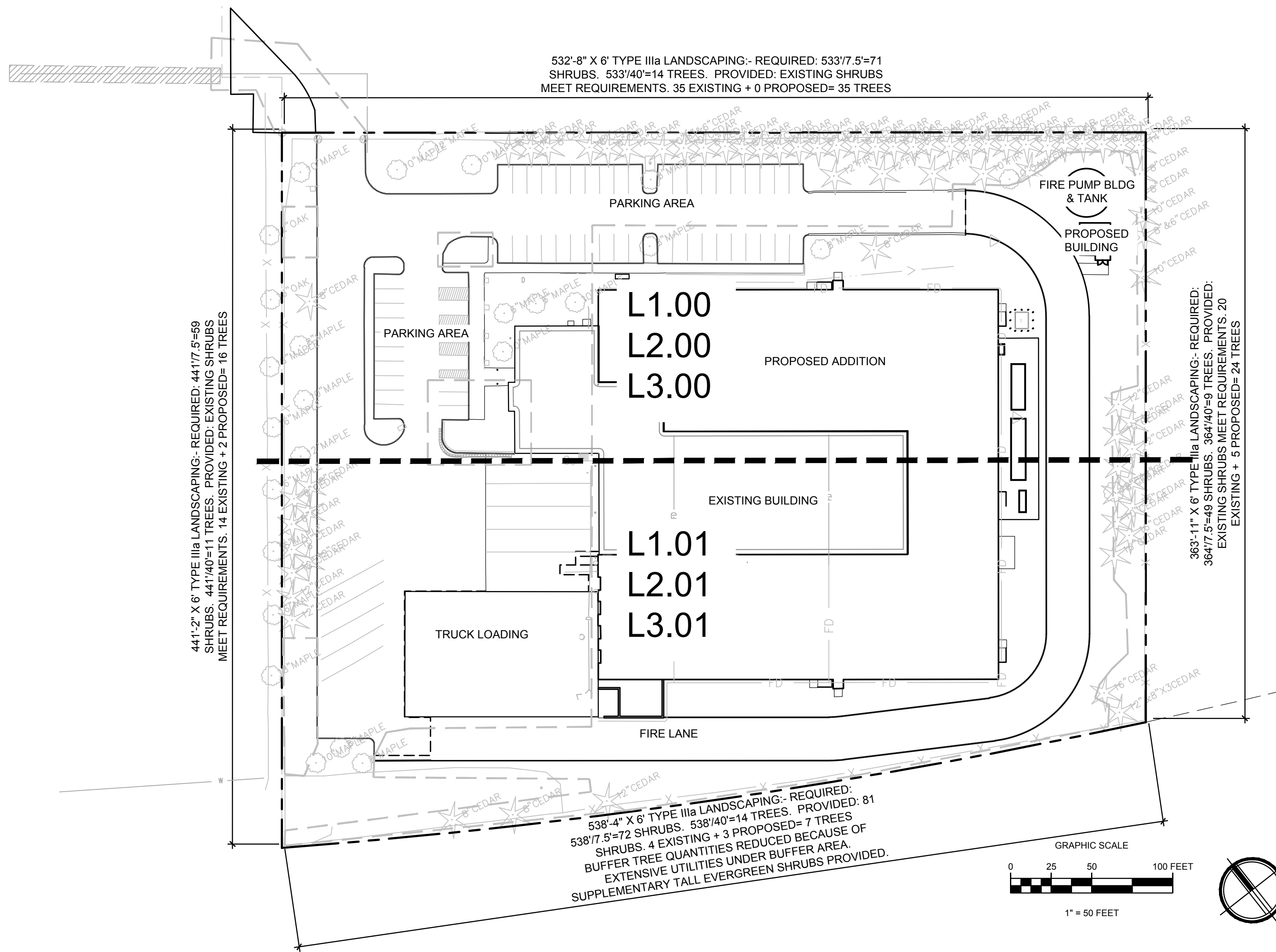
- SEE SPECIFICATIONS FOR PLANT MATERIAL, TOP SOIL AND PLANTING MIX TYPES AND DEPTH, MULCHING, SOIL AMENDMENTS, FERTILIZERS AND WARRANTIES.
- PLANTING SHALL CONFORM TO ALL CITY OF PUYALLUP CODE REQUIREMENTS, INCLUDING PRESERVATION OF ADEQUATE INTERSECTION SIGHT DISTANCE LINES/ TRIANGULAR AREAS.
- CONTRACTOR SHALL VERIFY ON-SITE CONDITIONS PRIOR TO BIDDING AND CONSTRUCTION.
- MODIFY EXISTING AUTOMATIC UNDERGROUND SYSTEM AS REQUIRED TO MAINTAIN IRRIGATION TO EXISTING PLANTING AND PROVIDE IRRIGATION TO NEW PLANTINGS, SEE L3.00-L3.01.
- THE CONTRACTOR AND OWNER ARE RESPONSIBLE FOR READING THE PLANS, SPECIFICATIONS AND NOTES.
- THE CONTRACTOR SHALL VERIFY ALL PLANT MATERIAL QUANTITIES PRIOR TO INSTALLATION. ANY PLANT MATERIAL QUANTITIES LISTED ARE FOR THE CONVENIENCE OF THE CONTRACTOR. ACTUAL NUMBER OF SYMBOLS SHALL HAVE PRIORITY OVER QUANTITY DESIGNATED. THE CONTRACTOR SHALL BE RESPONSIBLE FOR COUNTING THE TOTAL NUMBER OF PLANTS INDICATED ON THE PLANS AND ESTIMATING GROUND COVER QUANTITIES.
- THE CONTRACTOR SHALL FURNISH AND PAY FOR ALL CONTAINER OR FIELD GROWN TREES, SHRUBS AND GROUND COVERS, INCLUDING SEEDING AND SODDED TURF, HYDROMULCHES AND FLATTED GROUND COVERS. THE CONTRACTOR SHALL ALSO BE RESPONSIBLE AND PAY FOR: PLANTING OF ALL PLANT MATERIALS; THE SPECIFIED GUARANTEE OF ALL PLANT MATERIALS; THE STAKING AND GUYING OF TREES AND THE CONTINUOUS PROTECTION OF ALL PLANT MATERIALS UPON THEIR ARRIVAL AT THE SITE.
- SEE SHEET L4.00 FOR PLANTING DETAILS.

**SHEET LIST**

Sheet Number	Sheet Title
L0.00	COVER PAGE
L0.01	SPECIFICATIONS SHEET
L1.00	PLANTING PLAN
L1.01	PLANTING PLAN
L1.02	PLANT SCHEDULE
L2.00	SOILS PLAN
L2.01	SOILS PLAN
L3.00	IRRIGATION PLAN
L3.01	IRRIGATION PLAN
L3.02	IRRIGATION SCHEDULES
L4.00	PLANTING DETAILS
L4.01	IRRIGATION DETAILS

**CODE SUMMARY TABLE**

PUYALLUP MUNICIPAL CODE	CALCULATIONS	REQUIRED	PROVIDED
PMC 20.58.005	REQUIRED PERCENTAGE TO BE LANDSCAPE = 5% CUMULATIVE PAVED AREA ON SITE = 79,554 SF 79,554 * 0.05 = 3,978 SF	3,978 SF	4,257 SF
VMS 7.3	50% MIN. OF SHRUBS AND GROUND COVERS SHALL BE NATIVE 1,124 TOTAL SHRUBS AND GROUND COVERS * 0.5 = 562	562	1,044
	6 TREES TO BE REMOVED = 6 TREE REPLACEMENT	6	12



**OVERALL SITE PLAN**



Know what's below.  
Call before you dig.

**MUNICIPAL SPECIFICATION**

CONTRACTOR TO FOLLOW PUYALLUP VEGETATION MANAGEMENT STANDARDS APPENDIX 20.10 TREE PROTECTION STANDARDS ON CONSTRUCTION SITES. PER VMS 6.4.H. INSPECT NURSERY STOCK. COORDINATE CORRECTIVE PRACTICES NEEDED PRIOR TO INSTALLATION (E.G., CORRECTING CIRCLING ROOTS, REMOVING DEAD BRANCHES, INSPECTING/CORRECTING BRANCH ARCHITECTURE FOR DEFECTS, ETC.) WITH ARBORIST OR LANDSCAPE ARCHITECT.

VMS 7.0.C ALL PLANTS INSTALLED SHALL BE OF THE TYPE, SIZE, AND CONDITION SHOWN ON THE PROJECTS' APPROVED FINAL LANDSCAPE PLAN. PLANTS SHALL EXHIBIT NORMAL HABITS OF GROWTH FOR THE SPECIES. SHALL BE FREE OF SCARS, BRUISES, BREAKS TO MAJOR BRANCHES AND WEED ROOTS AND SEEDS. TREES SHALL BE PRUNED TO CORRECT ANY STRUCTURAL DEFECTS IN BRANCH ARCHITECTURE (E.G. CO-DOMINANT STEMS, CROSSING BRANCHES, BRANCH SPACING, ETC.) AS WELL AS CORRECT CIRCLING/GIRDLING ROOTS IN THE ROOT BALL. PRUNING SHALL BE PER ARBORIST BEST PRACTICES.

VMS 8. A MINIMUM OF EIGHT (8) INCHES OF TOPSOIL, CONTAINING TEN PERCENT DRY WEIGHT IN PLANTING BEDS, AND 5% ORGANIC MATTER CONTENT IN TURF AREAS, AND A PH FROM 6.0 TO 8.0 OR MATCHING THE PH OF THE ORIGINAL UNDISTURBED SOIL. THE TOPSOIL LAYER SHALL HAVE A MINIMUM DEPTH OF EIGHT INCHES (8") EXCEPT WHERE TREE ROOTS LIMIT THE DEPTH OF INCORPORATION OF AMENDMENTS NEEDED TO MEET THE CRITERIA. SUBSOILS BELOW THE TOPSOIL LAYER SHOULD BE SCARIFIED AT LEAST 6 INCHES WITH SOME INCORPORATION OF THE UPPER MATERIAL TO AVOID STRATIFIED LAYERS, WHERE FEASIBLE. INSTALLATION OF THE EIGHT INCHES (8") OF TOPSOIL, AS DESCRIBED ABOVE, SHALL GENERALLY BE ACHIEVED BY PLACING FIVE INCHES (5") OF IMPORTED SANDY LOAM TOPSOIL INTO PLANNED LANDSCAPE AREAS (SUB-BASE SCARIFIED FOUR INCHES (4")) WITH A THREE-INCH (3") LAYER OF COMPOST TILLED INTO THE ENTIRE DEPTH.

REQUIRED INSPECTIONS INCLUDE TREE PROTECTION FENCING PRIOR TO COMMENCING WORK, AND FINAL LANDSCAPE INSTALLATION APPROVAL. CONTRACTOR RESPONSIBLE FOR SCHEDULING CITY INSPECTIONS.

SUBMITTAL OF TOPSOIL DELIVERY TICKETS OR INVOICES TO CITY AND LANDSCAPE ARCHITECT IS REQUIRED.

SEE APPENDIX 20.10 FOR TREE PROTECTION ON CONSTRUCTION AND DEVELOPMENT SITES BEST MANAGEMENT PRACTICES.

**PLANTING SPECIFICATION**

**SITE PREPARATION**

- SEE CIVIL DRAWINGS FOR GRADING, AND UTILITY LOCATIONS AND DIMENSIONS. CONTRACTOR SHALL BE RESPONSIBLE FOR CONFIRMING LOCATION OF ALL UTILITIES. CALL FOR UTILITY LOCATIONS PRIOR TO DEMOLITION. CONSULT WITH ARCHITECT AND/OR GENERAL CONTRACTOR PRIOR TO DEMOLITION.
- CONTRACTOR SHALL NOTIFY THE OWNER'S REPRESENTATIVE OF ANY DISCREPANCIES FOUND IN PLANS OR DEVIATIONS FROM DOCUMENTED ON-SITE CONDITIONS. FAILURE TO NOTIFY THE OWNER'S REPRESENTATIVE IN A TIMELY MANNER SHALL RESULT IN CONTRACTOR ASSUMING RESPONSIBILITY FOR COSTS ASSOCIATED WITH ANY AND ALL REMEDIAL MEASURES REQUIRED.
- CONTRACTOR AND ALL SUBCONTRACTORS SHALL CONFORM TO ALL STATE AND/OR LOCAL CODES.
- CONTRACTOR SHALL INSTALL ALL PRODUCTS PER MANUFACTURERS SPECIFICATIONS.
- IF UTILITIES ARE ENCOUNTERED, CONTRACTOR SHALL PROMPTLY INFORM BUILDING REPRESENTATIVE AND OWNER'S REPRESENTATIVE AND REPAIR ANY DAMAGES.
- CONTRACTOR AND ALL SUBCONTRACTORS SHALL CLEAN UP ALL DEBRIS AND LEAVE SITE IN A NEAT AND ORGANIZED CONDITION DAILY. CONTRACTOR SHALL CLEAN ADJACENT SURFACES DAILY AS NECESSARY (COORDINATE WITH GENERAL CONTRACTOR FOR APPROVAL) DAILY.
- CONTRACTOR SHALL SUBMIT LANDSCAPE PROJECT SCHEDULE TO LANDSCAPE ARCHITECT (L.A.), A MINIMUM OF 4 WEEKS PRIOR TO START OF ANY LANDSCAPE WORK.

**BULK MATERIALS:**

- DO NOT DUMP OR STORE BULK MATERIALS NEAR STRUCTURES, UTILITIES, WALKWAYS AND PAVEMENTS OR ON EXISTING TURF AREAS OR PLANTS.
- PROVIDE EROSION-CONTROL MEASURES TO PREVENT EROSION OR DISPLACEMENT OF BULK MATERIALS. DISCHARGE OF SOIL-BEARING WATER RUNOFF, AND AIRBORNE DUST REACHING ADJACENT PROPERTIES, WATER CONVEYANCE SYSTEMS, OR WALKWAYS.
- DO NOT MOVE OR HANDLE MATERIALS WHEN THEY ARE SATURATED OR FROZEN.

**PLANTING SOIL:**

- LANDSCAPE AREAS SHALL BE DEEP TILLED TO A DEPTH OF AT LEAST 12 INCHES TO FACILITATE DEEP WATER PENETRATION AND SOIL OXYGENATION.
- FOR ALL NEWLY LANDSCAPED AREAS, 4 CUBIC YARDS OF COMPOST PER 1,000 SQUARE FEET OF LANDSCAPE AREA SHALL BE INCORPORATED TO A DEPTH OF AT LEAST 4 INCHES.
- FOR ALL NEWLY LANDSCAPED AREAS, INSTALL SANDY LOAM TOPSOIL, SPREAD TO DEPTHS IN PLAN NOTES, IN ADDITION TO THE INCORPORATION OF ORGANIC MATTER INTO THE TOP HORIZON OF THE IMPORTED SOIL.
- TOPSOIL SHALL BE ONE OF THE FOLLOWING, TESTED BY AN ACCREDITED SOIL TESTING FACILITY AND AMENDED BASED ON THEIR RECOMMENDATIONS:
  - SANDY LOAM TOPSOIL FROM CEDAR GROVE OR APPROVED EQUAL IN GROUND COVER, SHRUB AND TREE AREAS.
  - TWO-WAY WINTER MIX FROM CEDAR GROVE OR APPROVED EQUAL IN LAWN AREAS.
  - OR NATIVE STOCKPILED SOIL AMENDED TO SANDY LOAM, AND

AS RECOMMENDED BY SOIL TEST, OR APPROVED BY LANDSCAPE ARCHITECT.

**MULCH**

- MULCH FOR OCCUPIED AREAS: GROUND FIR OR HEMLOCK AGED BARK OF UNIFORM DARK BLACK COLOR, FREE FROM WEED, SEEDS, SAWDUST, AND SPLINTERS AND SHALL NOT CONTAIN RESIN, TANNIN, WOOD FIBER, SALTS, OR OTHER COMPOUNDS DETRIMENTAL TO PLANT LIFE. FINE SIZE RANGE OF 1/2 INCH TO 1 INCH. SUBMIT SAMPLE FOR OWNER ACCEPTANCE.
- MULCH FOR UNOCCUPIED AREAS: TYPE B: WOOD CHIPS FROM AN ARBORIST CHIPPING OPERATION WITH LESS THAN 20% BY VOLUME GREEN LEAVES. CHIPS STOCKPILED FROM THE TREE REMOVAL PROCESS MAY BE USED.

**MULCHING.**

- MULCH SHALL BE APPLIED TO ALL PLANTING AREAS. MULCHES SHALL BE APPLIED TO THE FOLLOWING DEPTHS: 3 INCHES COVER BARE SOIL, AND 2 INCHES WHERE PLANT MATERIALS WILL COVER
- MULCH TO BE FREE OF DELETERIOUS MATERIALS AND SUITABLE AS A TOP DRESSING OF TREES AND SHRUBS, CONSISTING OF COMPOSTED AGED (MIN. 1 YEAR) FIR OR HEMLOCK BARK CHIPS AND TO BE DARK (BLACK) IN COLOR. COMPOST MULCH TO BE WELL-COMPOSTED, STABLE AND WEED-FREE ORGANIC MATTER WITH ORGANIC MATTER COMPRISING 50 TO 60 PERCENT OF DRY WEIGHT.
- TOP OF MULCH SHALL BE FLUSH WITH FINISH GRADES. DO NOT PLACE MULCH WITHIN 2 INCHES OF TRUNKS OR STEMS.

**PREPARATION:**

- CLEAN SOIL OF CONCRETE SLURRY, CONCRETE LAYERS OR CHUNKS, CEMENT, PLASTER, BUILDING DEBRIS, OILS, GASOLINE, DIESEL FUEL, PAINT THINNER, TURPENTINE, TAR, ROOFING COMPOUND, ACID AND OTHER EXTRANEOUS MATERIALS THAT ARE HARMFUL TO PLANT GROWTH.

**PLACING MANUFACTURED PLANTING TOPSOIL OVER EXPOSED SUBGRADE:**

- TILL PLANTING SOILS PER VMS 8.2.A. REMOVE STONES LARGER THAN 1-1/2 INCHES IN ANY DIMENSION AND STICKS, ROOTS, RUBBISH, AND OTHER EXTRANEOUS MATTER AND LEGALLY DISPOSE OF THEM OFF OWNER'S PROPERTY.
- APPLY, ADD SOIL AMENDMENTS, AND MIX APPROXIMATELY HALF THE THICKNESS OF TOPSOIL OVER PREPARED, LOOSENED SUBGRADE. MIX THOROUGHLY INTO TOP 4 INCHES OF SUBGRADE. SPREAD REMAINDER OF TOPSOIL.
- SPREAD UNAMENDED SOIL TO TOTAL DEPTH REQUIRED TO MEET FINISH GRADES AFTER NATURAL SETTLEMENT. DO NOT SPREAD IF SOIL OR SUBGRADE IS FROZEN, MUDDY, OR EXCESSIVELY WET.
- APPLY AND MIX TOPSOIL IN LIFTS NOT EXCEEDING 8 INCHES IN LOOSE DEPTH FOR MATERIAL COMPACTED BY COMPACTION EQUIPMENT, AND NOT MORE THAN 6 INCHES IN LOOSE DEPTH FOR MATERIAL COMPACTED BY HAND-OPERATED TAMPERS.
- SOIL WILL BE INSPECTED USING A SOIL AUGER TO ENSURE UNCOMPACTED DEPTH OF AT LEAST 12", AND TOPSOIL WITH ORGANIC MATTER TO AT LEAST 8", OR AS REQUIRED. AUGER MUST PENETRATE AT LEAST REQUIRED TILLED DEPTH UNDER WEIGHT OF INSPECTOR OR IT WILL BE REJECTED.

**PROTECTION:**

- IF PLANTING SOIL OR SUBGRADE IS OVERCOMPACTED, DISTURBED, OR CONTAMINATED BY FOREIGN OR DELETERIOUS MATERIALS OR LIQUIDS, REMOVE THE PLANTING SOIL AND CONTAMINATION, RESTORE THE SUBGRADE AS DIRECTED BY LANDSCAPE ARCHITECT AND REPLACE CONTAMINATED PLANTING SOIL WITH NEW PLANTING SOIL.
- REMOVE SURPLUS SOIL AND WASTE MATERIAL INCLUDING EXCESS SUBSOIL, UNSUITABLE MATERIALS, TRASH, AND DEBRIS AND LEGALLY DISPOSE OF THEM OFF OWNER'S PROPERTY UNLESS OTHERWISE INDICATED.

**PLANT MATERIAL OBSERVATION:**

- LANDSCAPE ARCHITECT MAY OBSERVE PLANT MATERIAL EITHER AT PLACE OF GROWTH OR AT SITE BEFORE PLANTING FOR COMPLIANCE WITH REQUIREMENTS FOR GENUS SPECIES, VARIETY, CULTIVAR, SIZE, AND QUALITY. LANDSCAPE ARCHITECT MAY ALSO OBSERVE TREES AND SHRUBS FURTHER FOR SIZE AND CONDITION OF ROOT SYSTEMS, PESTS, DISEASE SYMPTOMS, INJURIES AND LATENT DEFECTS AND MAY REJECT UNSATISFACTORY OR DEFECTIVE MATERIAL AT ANY TIME DURING PROGRESS OF WORK. REMOVE REJECTED PLANTS IMMEDIATELY FROM PROJECT SITE.
- DO NOT PRUNE TREES AND SHRUBS BEFORE DELIVERY. PROTECT BARK, BRANCHES AND ROOT SYSTEMS FROM SUN SCALD, DRYING, WIND BURN, SWEATING, WHIPPING, AND OTHER HANDLING AND TYING DAMAGE. PROVIDE PROTECTIVE COVERING OF PLANTS DURING SHIPPING AND DELIVERY.

**PREPARATION:**

- PROTECT STRUCTURES, UTILITIES, SIDEWALKS, PAVEMENTS, AND OTHER FACILITIES AND TURF AREAS AND EXISTING PLANTS FROM DAMAGE CAUSED BY PLANTING OPERATIONS.
- LAYOUT PLANTS AT LOCATIONS DIRECTED BY PLAN. STAKE LOCATIONS OF INDIVIDUAL TREES AND SHRUBS AND OUTLINE AREAS FOR MULTIPLE PLANTINGS.
- DELIVERY: DELIVER PLANTS AFTER PREPARATIONS FOR PLANTING HAVE BEEN COMPLETED AND INSTALL IMMEDIATELY. IF PLANTING IS DELAYED MORE THAN SIX HOURS AFTER DELIVERY, SET PLANTS AND TREES IN THEIR APPROPRIATE ASPECT (SUN, FILTERED SUN, OR SHADE), PROTECT FROM WEATHER AND MECHANICAL DAMAGE, AND KEEP ROOTS MOIST.
- FIELD CONDITIONS: VERIFY ACTUAL GRADE ELEVATIONS, SERVICE AND UTILITY LOCATIONS, IRRIGATION SYSTEM COMPONENTS, AND DIMENSIONS OF PLANTINGS AND CONSTRUCTION CONTIGUOUS WITH NEW PLANTINGS BY FIELD MEASUREMENTS BEFORE PROCEEDING WITH PLANTING WORK.
- PLANT MATERIAL: FURNISH NURSERY GROWN PLANTS TRUE TO GENUS, SPECIES, VARIETY, CULTIVARS, STEM FORM, SHEARING,

AND OTHER FEATURES INDICATED ON PLANT SCHEDULE WITH HEALTHY ROOT SYSTEMS DEVELOPED BY TRANSPLANTING OR ROOT PRUNING. PROVIDE WELL-SHAPED, FULL-BRANCHED, HEALTHY, VIGOROUS STOCK, DENSELY FOLIATED WHEN IN LEAF AND FREE OF DISEASE, PESTS, EGGS, LARVAE AND DEFECTS SUCH AS KNOTS, SUN SCALD, INJURIES, ABRASIONS AND DISFIGUREMENT.

- PRUNING: PRUNE, THIN, AND SHAPE TREES, SHRUBS AND VINES AS DIRECTED BY LANDSCAPE ARCHITECT.
- LABELING: LABEL AT LEAST ONE PLANT OF EACH VARIETY, SIZE, AND CALIPER WITH A SECURELY ATTACHED, WATERPROOF TAG BEARING LEGIBLE DESIGNATION OF COMMON NAME AND FULL SCIENTIFIC NAME, INCLUDING GENUS AND SPECIES.
- IF FORMAL ARRANGEMENTS OR CONSECUTIVE ORDER OF PLANTS IS INDICATED ON THE THE DRAWINGS, SELECT STOCK FOR UNIFORM HEIGHT AND SPREAD, AND NUMBER THE LABELS TO ASSURE SYMMETRY IN PLANTING.

**HYDROSEED MATERIAL:**

- SEEDS TO BE DELIVERED TO THE JOB SITE IN UNOPENED BAGS BEARING THE SEED SUPPLIER'S TAG SHOWING THE PROPORTIONS AND MIX COMPONENTS OF THE SEED CONTAINED IN EACH BAG INCLUDING THE AREA TO BE COVERED BY THE SEED CONTAINED IN EACH BAG.
- CONTRACTOR TO BRING TO THE JOB SITE THE PACKING LIST FROM THE SEED SUPPLIER LISTING ALL THE SEED DELIVERED TO THE JOB SITE.
- PROVIDE FRESH, CLEAN, NEW-CROP SEED COMPLYING WITH TOLERANCE OF PURITY AND GERMINATION ESTABLISHED BY THE OFFICIAL SEED ANALYSIS OF NORTH AMERICA. PROVIDE SEED MIXTURE COMPOSED OF GRASS SPECIES AND PERCENTAGES AS SPECIFIED BY SEED MANUFACTURER OR SUPPLIER.
- FERTILIZER: PER SEED SUPPLIER'S RECOMMENDATION.
- ALL SEEDING OF SLOPES SHALL BE INSTALLED WITH AN APPROVED TACKIFIER OR EQUIVALENT.
- SEED AT MANUFACTURER'S OR SUPPLIER'S RECOMMENDED TIMES AND RATES.

**PLANTING:**

- SET OUT AND SPACE GROUND COVER AND PLANTS OTHER THAN TREES, SHRUBS AND VINES AS INDICATED ON DRAWINGS IN EVEN ROWS WITH TRIANGULAR SPACING.
  - USE PLANTING SOIL FOR BACKFILL.
  - DIG HOLES LARGE ENOUGH TO ALLOW SPREADING OF ROOTS.
  - WATER THOROUGHLY AFTER PLANTING, TAKING CARE NOT TO COVER PLANT CROWNS WITH WET SOIL.
  - PROTECT PLANTS FROM HOT SUN AND WIND; REMOVE PROTECTION IF PLANTS SHOW EVIDENCE OF RECOVERY FROM TRANSPLANTING SHOCK.
- REPAIR AND REPLACEMENT:**
- REPAIR OR REPLACE EXISTING OR NEW TREES AND OTHER PLANTS THAT ARE DAMAGED BY CONSTRUCTION OPERATIONS, IN A MANNER APPROVED BY LANDSCAPE ARCHITECT.
- CLEANING AND PROTECTION:**
- DURING PLANTING, KEEP ADJACENT PAVING AND CONSTRUCTION CLEAN AND WORK AREA IN AN ORDERLY CONDITION.
  - REMOVE SURPLUS SOIL AND WASTE MATERIAL INCLUDING EXCESS SUBSOIL, UNSUITABLE SOIL, TRASH, AND DEBRIS AND LEGALLY DISPOSE OF THEM OFF OWNER'S PROPERTY.
  - PROTECT PLANTS FROM DAMAGE DUE TO LANDSCAPE OPERATIONS AND OPERATIONS OF OTHER CONTRACTORS AND TRADES. MAINTAIN PROTECTION DURING INSTALLATION AND MAINTENANCE PERIODS.
  - AFTER INSTALLATION AND BEFORE SUBSTANTIAL COMPLETION, REMOVE NURSERY TAGS, NURSERY STAKES, THE TAPE, WIRE, BURLAP, AND OTHER DEBRIS FROM PLANT MATERIAL, PLANTING AREAS, AND PROJECT SITE.

**MAINTENANCE SERVICE:**

- LANDSCAPE CONTRACTOR SHALL PROVIDE MAINTENANCE BY SKILLED EMPLOYEES OF LANDSCAPE INSTALLER AND MAINTAIN THE PLANT MATERIAL, IRRIGATION SYSTEM AND KEEP PLANTED AREAS WEED FREE. BEGIN MAINTENANCE IMMEDIATELY AFTER PLANTS ARE INSTALLED AND CONTINUE UNTIL PLANTINGS ARE ACCEPTABLY HEALTHY AND WELL ESTABLISHED AND THROUGHOUT WARRANTY PERIOD.

**WARRANTY:**

- INSTALLER AGREES TO REPAIR OR REPLACE PLANTINGS AND ACCESSORIES THAT FAIL IN MATERIALS, WORKMANSHIP, OR GROWTH WITHIN SPECIFIED WARRANTY PERIOD. WARRANTY PERIOD TO BE FOR 12 MONTHS FROM DATE OF UNTIL FINAL ACCEPTANCE IS RECEIVED IN WRITING FROM THE OWNERS REPRESENTATIVE.

**IRRIGATION SPECIFICATION**

**GENERAL**

- THIS DESIGN IS DIAGRAMMATIC. ALL PIPING, VALVES, ETC. SHOWN WITHIN PAVED AREAS IS FOR DESIGN CLARIFICATION ONLY AND SHALL BE INSTALLED IN PLANTING AREAS WHERE POSSIBLE. AVOID ANY CONFLICTS BETWEEN THE IRRIGATION SYSTEM, PLANTING AND ARCHITECTURAL FEATURES.
- DO NOT WILLFULLY INSTALL THE SPRINKLER SYSTEM AS SHOWN ON THE DRAWINGS WHEN IT IS OBVIOUS IN THE FIELD THAT OBSTRUCTIONS, GRADE DIFFERENCES OR DIFFERENCES IN THE AREA DIMENSIONS EXIST THAT MIGHT NOT HAVE BEEN

CONSIDERED IN THE ENGINEERING. SUCH OBSTRUCTIONS OR DIFFERENCES SHOULD BE BROUGHT TO THE ATTENTION OF THE OWNER'S AUTHORIZED REPRESENTATIVE. IN THE EVENT THAT THIS NOTIFICATION IS NOT PERFORMED, THE IRRIGATION CONTRACTOR SHALL ASSUME FULL RESPONSIBILITY FOR ANY REVISIONS NECESSARY.

- IT IS THE RESPONSIBILITY OF THE IRRIGATION CONTRACTOR TO FAMILIARIZE HIMSELF WITH ALL GRADE DIFFERENCES, LOCATION OF WALLS, RETAINING WALLS, ETC. THE SHALL COORDINATE HIS WORK WITH THE GENERAL CONTRACTOR AND OTHER SUBCONTRACTORS FOR THE LOCATION AND THE INSTALLATION OF PIPE SLEEVES THROUGH WALLS, UNDER ROADWAYS, PAVING, STRUCTURES, ETC.
- NOTIFY LANDSCAPE ARCHITECT OF ANY ASPECTS OF LAYOUT THAT WILL PROVIDE INCOMPLETE OR INSUFFICIENT WATER COVERAGE OF PLANT MATERIAL AND DO NOT PROCEED UNTIL THEIR INSTRUCTIONS ARE OBTAINED.

**PIPING**

- IN ADDITION TO THE SLEEVES AND CONDUITS SHOWN ON THE DRAWINGS, THE IRRIGATION CONTRACTOR SHALL BE RESPONSIBLE FOR THE INSTALLATION OF SLEEVES AND CONDUITS OF SUFFICIENT SIZE UNDER ALL PAVED AREAS.
- ALL LATERAL PIPING AREAS SHALL BE SCHEDULE 40 PVC PIPE.
- WHERE IT IS NECESSARY TO EXCAVATE ADJACENT TO EXISTING TREES, THE CONTRACTOR SHALL USE ALL POSSIBLE CARE TO AVOID INJURY TO TREES, AND TREE ROOTS. EXCAVATION IN AREAS WHERE 2 INCH AND LARGER ROOTS OCCUR SHALL BE DONE BY HAND. ROOTS 2 INCHES AND LARGER IN DIAMETER SHALL BE WRAPPED IN A PLASTIC BAG AND SECURED WITH A RUBBER BAND. TRENCHES ADJACENT TO TREE SHOULD BE CLOSED WITHIN 24 HOURS; WHERE THIS IS NOT POSSIBLE, THE SIDE OF THE TRENCH ADJACENT TO THE TREE SHALL BE KEPT SHADED WITH BURLAP OR CANVAS.

- THE BACKFLOW DEVICE SHALL BE TESTED AND INSTALLATION VERIFIED TO BE ACCORDING TO LOCAL WATER PURVEYOR, HEALTH DEPARTMENT, STATE, AND FEDERAL REQUIREMENTS.
- INSTALL BACKFLOW ASSEMBLY IN CENTER OF VALVE BOX. ALLOW ADEQUATE ROOM (6-8" PREFERABLY) ON BOTH SIDES OF ASSEMBLY FOR ACCESS.
- STACKED VAULT BOXES MUST BE PERMANENTLY FASTENED TOGETHER.
- SUPPORT ALL DOUBLE CHECK ASSEMBLIES 1.5" IN SIZE AND GREATER. SUPPORTS SHALL NOT INTERFERE WITH MAINTENANCE OR NORMAL OPERATION OF THE ASSEMBLY.
- FLUSH LINES THOROUGHLY BEFORE INSTALLING ASSEMBLY.
- WHERE DISTANCE BETWEEN WATER METER OR TAP AND BACKFLOW DEVICE IS GREATER THAN 10', ALL EXPOSED PIPING SHALL BE STENCILED "FEED LINE TO BACKFLOW PREVENTER - DO NOT TAP" AT 5' INTERVALS.

**BACKFLOW PREVENTION ASSEMBLY**

- THE BACKFLOW DEVICE SHALL BE TESTED AND INSTALLATION VERIFIED TO BE ACCORDING TO LOCAL WATER PURVEYOR, HEALTH DEPARTMENT, STATE, AND FEDERAL REQUIREMENTS.
- INSTALL BACKFLOW ASSEMBLY IN CENTER OF VALVE BOX. ALLOW ADEQUATE ROOM (6-8" PREFERABLY) ON BOTH SIDES OF ASSEMBLY FOR ACCESS.
- STACKED VAULT BOXES MUST BE PERMANENTLY FASTENED TOGETHER.
- SUPPORT ALL DOUBLE CHECK ASSEMBLIES 1.5" IN SIZE AND GREATER. SUPPORTS SHALL NOT INTERFERE WITH MAINTENANCE OR NORMAL OPERATION OF THE ASSEMBLY.
- FLUSH LINES THOROUGHLY BEFORE INSTALLING ASSEMBLY.
- WHERE DISTANCE BETWEEN WATER METER OR TAP AND BACKFLOW DEVICE IS GREATER THAN 10', ALL EXPOSED PIPING SHALL BE STENCILED "FEED LINE TO BACKFLOW PREVENTER - DO NOT TAP" AT 5' INTERVALS.

- IRRIGATION CONTRACTOR TO COORDINATE WITH THE LOCAL WATER PURVEYOR FOR PREINSTALLATION REQUIREMENTS, MUNICIPAL INSTALLATION, INSPECTION AND TESTING OF BACKFLOW PREVENTION DEVICE.
- VALVES
- VALVE LOCATIONS SHOWN ARE DIAGRAMMATIC. INSTALL IN GROUND COVER/SHRUB AREAS WHERE POSSIBLE (NOT IN LAWN AREA.)
- INSTALL VALVE BOXES MINIMUM 12" FROM AND PERPENDICULAR TO WALK, CURB, LAWN, BUILDING OR LANDSCAPE FEATURE. AT MULTIPLE VALVE BOX GROUPS, EACH BOX SHALL BE AN EQUAL DISTANCE FROM THE WALK, CURB, LAWN, ETC. AND EACH BOX SHALL BE MINIMUM 12" APART. SHORT SIDE OF VALVE BOXES SHALL BE PARALLEL TO WALK, CURB, LAWN, ETC.
- LOCATE QUICK COUPLING VALVE 12" FROM HARDSCAPE AREA AND NO FURTHER THAN 100' APART.

- IRRIGATION CONTRACTOR TO COORDINATE WITH THE LOCAL WATER PURVEYOR FOR PREINSTALLATION REQUIREMENTS, MUNICIPAL INSTALLATION, INSPECTION AND TESTING OF BACKFLOW PREVENTION DEVICE.

**VALVES**

- VALVE LOCATIONS SHOWN ARE DIAGRAMMATIC. INSTALL IN GROUND COVER/SHRUB AREAS WHERE POSSIBLE (NOT IN LAWN AREA.)
- INSTALL VALVE BOXES MINIMUM 12" FROM AND PERPENDICULAR TO WALK, CURB, LAWN, BUILDING OR LANDSCAPE FEATURE. AT MULTIPLE VALVE BOX GROUPS, EACH BOX SHALL BE AN EQUAL DISTANCE FROM THE WALK, CURB, LAWN, ETC. AND EACH BOX SHALL BE MINIMUM 12" APART. SHORT SIDE OF VALVE BOXES SHALL BE PARALLEL TO WALK, CURB, LAWN, ETC.
- LOCATE QUICK COUPLING VALVE 12" FROM HARDSCAPE AREA AND NO FURTHER THAN 100' APART.

**CONTROLLER & WIRING**

- ELECTRICAL CONTRACTOR TO SUPPLY 120 VAC (2.5 AMP) SERVICE TO CONTROLLER LOCATION. IRRIGATION CONTRACTOR TO MAKE FINAL CONNECTION FROM ELECTRICAL STUB-OUT TO CONTROLLER.
- EACH CONTROLLER SHALL HAVE ITS OWN INDEPENDENT GROUND WIRE.
- REMOTE CONTROL VALVES SHALL BE WIRED TO CONTROLLER IN SEQUENCE AS SHOWN ON PLANS. RUN WIRE FROM EACH RCV TO THE CONTROLLER. SPLICING WIRES TOGETHER OUTSIDE OF VALVE BOXES WILL NOT BE PERMITTED.
- SPLICING OF 24-VOLT WIRES WILL NOT BE PERMITTED EXCEPT IN VALVE BOXES. LEAVE A 24" COIL OF EXCESS WIRE AT EACH SPLICE AND 100 FEET ON CENTER ALONG WIRE RUN. TAPE WIRE IN BUNDLES 10 FEET ON CENTER. NO TAPING PERMITTED INSIDE SLEEVES.

- INSTALL A SPARE CONTROL WIRE OF A DIFFERENT COLOR ALONG THE ENTIRE MAIN LINE. LOOP 36" EXCESS WIRE INTO EACH SINGLE VALVE BOX AND INTO ONE VALVE BOX IN EACH GROUP OF VALVES.

**SPRINKLERS**

- ALL SPRINKLER HEADS SHALL BE SET PERPENDICULAR TO FINISH GRADE OF THE AREA TO BE IRRIGATED UNLESS OTHERWISE DESIGNATED ON THE PLANS.
- IN LOCATIONS WHERE LOW HEAD DRAINAGE WILL CAUSE EROSION AND EXCESS WATER, USE POP-UP SPRINKLER MODELS WITH

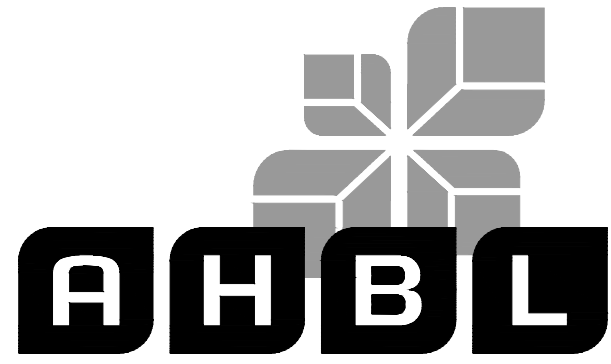
INTEGRAL CHECK VALVE OR CHECK VALVE ON SHRUB RISERS IN LIEU OF SCHEDULE 80 COUPLING.

- THE IRRIGATION CONTRACTOR SHALL FLUSH AND ADJUST ALL SPRINKLER HEADS FOR OPTIMUM PERFORMANCE AND TO PREVENT OVERSPRAY ONTO WALKS, ROADWAYS AND/OR BUILDINGS AS MUCH AS POSSIBLE. THIS SHALL INCLUDE SELECTING THE BEST DEGREE OF ARC TO FIT THE EXISTING SITE CONDITIONS AND TO THROTTLE THE FLOW CONTROL AT EACH VALVE TO OBTAIN THE OPTIMUM OPERATING PRESSURE FOR EACH SYSTEM.

- WHEN VERTICAL OBSTRUCTIONS (STREET LIGHTS, TREES, FIRE HYDRANTS, ETC.) INTERFERE WITH THE SPRAY PATTERN OF THE HEADS SO AS TO PREVENT PROPER COVERAGE, THE IRRIGATION CONTRACTOR SHALL FIELD ADJUST THE SPRINKLER SYSTEM BY INSTALLING A QUARTER, THIRD OR HALF CIRCLE HEAD AT THE SIDES OF THE OBSTRUCTION SO AS TO PROVIDE PROPER COVERAGE. ALL ADJUSTMENTS SHALL BE MADE AT NO ADDITIONAL COST TO THE OWNER.

**OPERATION**

- IRRIGATION CONTRACTOR SHALL INSTALL PROVISIONS FOR WINTERIZATION BY PROVIDING BOTH MANUAL DRAINS AT ALL LOW POINTS (AUTOMATIC DRAIN VALVES ARE NOT PERMITTED) AND A MEANS TO BLOW OUT IRRIGATIONS SYSTEM PIPES WITH PRESSURIZED AIR. SLOPE PIPE AT 1/2" MIN. TO DRAINS. PRESSURIZED AIR NOT TO EXCEED 20 PSI ON DRIP IRRIGATION LINES.
- OPERATE IRRIGATION CONTROLLER(S) BETWEEN THE HOURS OF 10:00 PM AND 5:00 AM TO MINIMIZE CONFLICTS WITH PEDESTRIANS AND VEHICULAR PARKING OR TRAFFIC.



TACOMA · SEATTLE · SPOKANE · TRI-CITIES

2215 North 30th Street, Suite 300, Tacoma, WA 98403  
253.383.2422 TEL 253.383.2572 FAX www.ahbl.com WEB

Project Title:

**COASTAL PACIFIC  
FOOD DISTRIBUTION  
PUYALLUP**

Client:

1942 NORTHWOOD DRIVE  
SALISBURY, MARYLAND 21801

MATT SMITH

Project No.

2230491.40

Issue Set & Date:

**ISSUE FOR PERMIT  
(REVISION A)**

05/15/2024



**NOTICE**  
ALTERATION OF THIS DOCUMENT SHALL INVALIDATE THE PROFESSIONAL SEAL AND SIGNATURE. PUBLICATION OF THIS DOCUMENT DOES NOT CONSTITUTE PROFESSIONAL REVIEW OR ENDORSEMENT BY THE ARCHITECT. THIS DOCUMENT IS ONLY VALID FOR THE PROJECT DESCRIBED IN THE BLOCK AND IS NOT TO BE USED FOR ANY OTHER PROJECT.

- 
- 
- 
- 
- 
- Revisions:

Sheet Title:

**SPECIFICATIONS SHEET**

Designed by: MAM/AG Drawn by: MAM/AG Checked by: CS

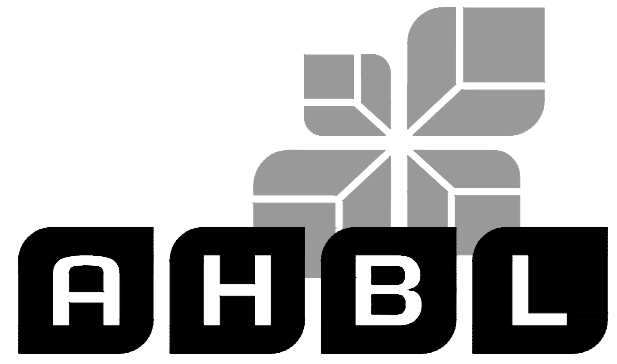
Sheet No.

**L0.01**



Know what's below.  
Call before you dig.





TACOMA · SEATTLE · SPOKANE · TRI-CITIES

2215 North 30th Street, Suite 300, Tacoma, WA 98403  
253.383.2422 TEL 253.383.2572 FAX www.ahbl.com WEB

Project Title:  
**COASTAL PACIFIC  
FOOD DISTRIBUTION  
PUYALLUP**

Client:  
  
1942 NORTHWOOD DRIVE  
SALISBURY, MARYLAND 21801

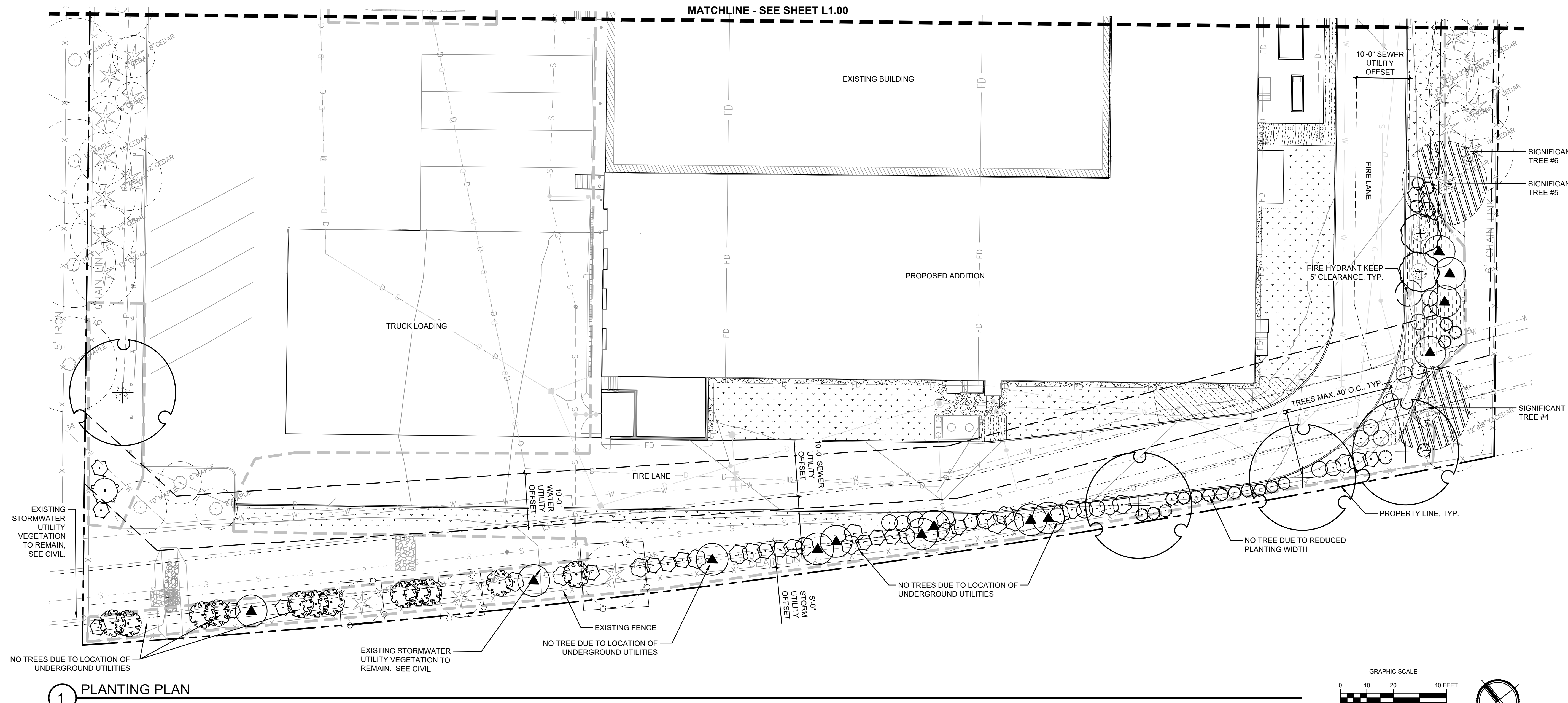
MATT SMITH

Project No.  
2230491.40

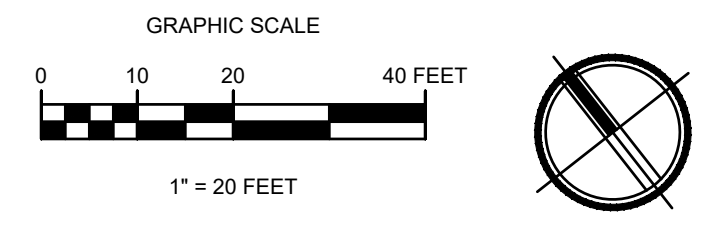
Issue Set & Date:  
**ISSUE FOR PERMIT  
(REVISION A)**  
05/15/2024



NOTICE  
ALTERATION OF THIS DOCUMENT SHALL INVALIDATE THE  
PROFESSIONAL SEAL AND SIGNATURE. PUBLICATION OF  
THIS DOCUMENT DOES NOT CONSTITUTE PROFESSIONAL  
DESIGN OR REVIEW BY THE ARCHITECT. IT IS THE  
ONLY FOR THE PROJECT IDENTIFIED IN THE TITLE BLOCK  
AND IS NOT TO BE USED FOR OTHER PROJECTS, OR  
ADDITION TO THAT PROJECT OR FOR ANY OTHER PROJECT.



**1 PLANTING PLAN**



**NOTES**

- 1. SEE SHEETS L4.00 FOR PLANT DETAILS
- 2. SEE L0.01 FOR SPECIFICATIONS

**PUYALLUP CODE REQUIREMENTS**

- 1. ALL TREES SHALL BE MARKED IN THE FIELD. THIS MAY BE DONE WITH A SMALL ALUMINUM TAG, SPRAY PAINTED NUMBERS USING A STENCIL TEMPLATE, OR OTHER MINIMALLY INVASIVE METHOD THAT AIDS THE SITE CONTRACTOR AND CASE PLANNER IN IDENTIFYING EACH TREE SCHEDULED FOR RETENTION.
- 2. NO WORK SHALL OCCUR WITHIN THE CRPZ, INCLUDING, BUT NOT LIMITED TO, STOCKPILING MATERIALS OR SOIL, PARKING EQUIPMENT, PLACING SOLVENTS, OR DUMPING ANY CONSTRUCTION RELATED DEBRIS, ETC.
- 3. ENTRY INTO THE CRPZ OR MODIFICATION OF THE CRPZ AREA REQUIRES PRIOR AUTHORIZATION FROM THE CITY PLANNING DEPARTMENT.
- 4. ROOTS CUT SHALL BE CUT CLEANLY AND IMMEDIATELY COVERED WITH WET BURLAP, WET WOOD CHIPS/HOG FUEL, WET COMPOST, ETC. TO PREVENT ROOT DESICCATION.
- 5. AREA IMMEDIATELY ADJOINING THE CRPZ THAT WILL REMAIN A ROOT ZONE AREA/LANDSCAPING AREA POST-CONSTRUCTION BUT IMPACTS TO THAT AREA OF THE ROOT ZONE ARE NEEDED FOR CONSTRUCTION RELATED ACTIVITIES SHALL BE COVERED WITH 6-8 INCHES OF COARSE WOOD CHIP MULCH/HOG FUEL AND COVERED WITH PLYWOOD TO PROTECT THE ROOTS IN THAT AREA.

VMS 9.2  
9.2 EXCAVATION IN ROOT ZONE  
TO AVOID DAMAGING THE HEALTH AND STABILITY OF ANY EXISTING TREE WHICH IS TO BE RETAINED, ALL ROOT STRUCTURES ONE (1) INCH IN DIAMETER OR GREATER FOUND WITHIN THE UPPER 24 INCHES OF SOIL, SHOULD NOT BE CUT. ALL ROOTS OVER TWO INCHES IN DIAMETER SHOULD BE TUNNELED UNDER. USE OF PNEUMATIC AIR TOOLS TO REMOVE SOIL AROUND EXISTING ROOT SYSTEM IS PREFERRED. AS LAST RESORT, IF ROOTS ARE TO BE CUT, THEY SHOULD BE CUT SLEANELY. ALL EXPOSED/CUT ROOTS SHALL BE IMMEDIATELY COVERED WITH WET BURLAP, WET HOG FUEL/WOOD CHIPS/SAWDUST OR DAMP SOIL OR COMPOST TO PREVENT DESICCATION. NO RIPPING OR TEARING OF THE ROOT STRUCTURE SHALL BE ALLOWED. AT NO TIME SHALL THE AMOUNT OF ROOT DISTURBANCE POSE A DANGER TO THE GENERAL HEALTH OR STABILITY OF THE TREE.

**CRZP CALCULATIONS**

TOTAL CRITICAL ROOT ZONE SF= 32,896 SF  
TOTAL DISTURBED AREA=342 SF  
  
SIGNIFICANT TREE CRITICAL ROOT ZONE  
  
SIGNIFICANT TREE 4:  
CRITICAL ROOT ZONE SF= 804  
DISTURBED CRZ SF= 235 (29%\*)  
SIGNIFICANT TREE 5:  
CRITICAL ROOT ZONE SF= 804  
DISTURBED CRZ SF= 107 (13%\*)  
  
\*MIN. OF 50% OF CRZ MUST BE PRESERVED AT NATURAL GRADE.

**LEGEND**

- PROPERTY LINE
- MATCHLINE
- PROJECT LIMIT / LIMITS OF WORK
- OVERHEAD BUILDING OR CANOPY
- EXISTING STRUCTURE
- PROPOSED STRUCTURE
- EXISTING TREE TO REMAIN
- CRITICAL ROOT PROTECTION ZONE(CRPZ)
- PERIMETER CRITICAL ROOT ZONE
- INTERIOR CRITICAL ROOT ZONE
- SIGNIFICANT TREE TO BE RETAINED, IMPACTED BY CONSTRUCTION
- TREE PROTECTION FENCE

Revisions:


Sheet Title:

**PLANTING PLAN**

Designed by: MAM/MAG  
Drawn by: MAM/MAG  
Checked by: CS

Sheet No.

**L1.01**

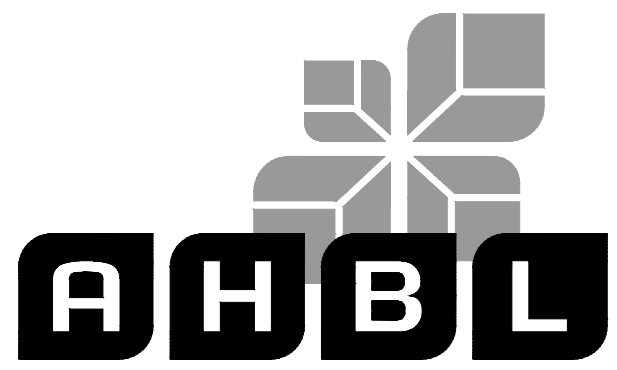
4 of 12 Sheets



**PLANT SCHEDULE**

SYMBOL	BOTANICAL NAME	COMMON NAME	PLANTING SIZE	SPACING	QTY
<b>TREES</b>					
	ACER GRANDIDENTATUM 'SCHMIDT' **	ROCKY MOUNTAIN GLOW® MAPLE	1.5" CAL MIN.	* MAX. 40 O.C.	6
	ULMUS AMERICANA 'PRINCETON'	PRINCETON AMERICAN ELM	1.5" CAL MIN.	* MAX. 40 O.C.	6
SYMBOL	BOTANICAL NAME	COMMON NAME	PLANTING SIZE	*WIDTH/ SPACING	QTY
<b>SHRUBS</b>					
	CORNUS SERICEA 'BAILEY' **	RED TWIG DOGWOOD	2 GAL	120" o.c. /90" o.c.	12
	HOLODISCUS DISCOLOR **	OCEANSPRAY	2 GAL	60" o.c. /90" o.c.	7
	MAHONIA AQUIFOLIUM **	OREGON GRAPE	2 GAL	60" o.c. /90" o.c.	42
	MORELLA CALIFORNICA	CALIFORNIA WAX MYRTLE	3 GAL	144" o.c. /90" o.c.	13
	RIBES SANGUINEUM **	RED FLOWERING CURRANT	2 GAL	84" o.c. /90" o.c.	38
	ROSA RUGOSA **	RUGOSA ROSE	2 GAL	72" o.c. /90" o.c.	22
	SYMPHORICARPOS ALBUS **	SNOWBERRY	2 GAL	72" o.c. /90" o.c.	30
	VACCINIUM OVATUM **	EVERGREEN HUCKLEBERRY	5 GAL	120" o.c. /90" o.c.	3
SYMBOL	BOTANICAL NAME	COMMON NAME	PLANTING SIZE	SPACING	QTY
<b>GROUND COVERS</b>					
	ARCTOSTAPHYLOS UVA-URSI**	KINNIKINNICK	1 GAL	24" o.c.	912
	FESTUCA X 'ECO-LAWN'	ECO-LAWN FESCUE	HYDROSEED		14,923 SF
	FRAGARIA CHILOENSIS **	BEACH STRAWBERRY	1 GAL	24" o.c.	338
	MULCH RESTORATION	HEM/FIR BARK MULCH	MULCH		308 SF
	PRUNUS LAUROCERASUS 'MT VERNON'	MT. VERNON LAUREL	1 GAL	36" o.c.	65
	VINCA MINOR 'BOWLES'	BOWLES PERIWINKLE	1 GAL	24" o.c.	232

\*TREE AND SHRUB SPACING DICTATED MAX. 40" O.C. AND MAX. 7.5' FOR TYPE IIIa PERIMETER LANDSCAPING REQUIREMENTS.  
 \*\*NATIVE



TACOMA · SEATTLE · SPOKANE · TRI-CITIES

2215 North 30th Street, Suite 300, Tacoma, WA 98403  
 253.383.2422 TEL 253.383.2572 FAX www.ahbl.com WEB

Project Title:

**COASTAL PACIFIC  
 FOOD DISTRIBUTION  
 PUYALLUP**

Client:

1942 NORTHWOOD DRIVE  
 SALISBURY, MARYLAND 21801

MATT SMITH

Project No.

2230491.40

Issue Set & Date:

**ISSUE FOR PERMIT  
 (REVISION A)**

05/15/2024



NOTICE  
 ALTERATION OF THIS DOCUMENT SHALL INVALIDATE THE PROFESSIONAL SEAL AND SIGNATURE. PUBLICATION OF THIS DOCUMENT DOES NOT REPRESENT THAT THE DESIGNER HAS REVIEWED THE PROJECT OR THAT THE PROJECT WILL BE COMPLETED AS SHOWN. THIS DOCUMENT IS THE PROPERTY OF THE DESIGNER AND IS NOT TO BE REPRODUCED, COPIED, OR USED FOR ANY OTHER PROJECT WITHOUT THE WRITTEN CONSENT OF THE DESIGNER.

△ \_\_\_\_\_  
 △ \_\_\_\_\_  
 △ \_\_\_\_\_  
 △ \_\_\_\_\_  
 Revisions:

Sheet Title:

**PLANT SCHEDULE**

Designed by: MAM/AG Drawn by: MAM/AG Checked by: CS

Sheet No.

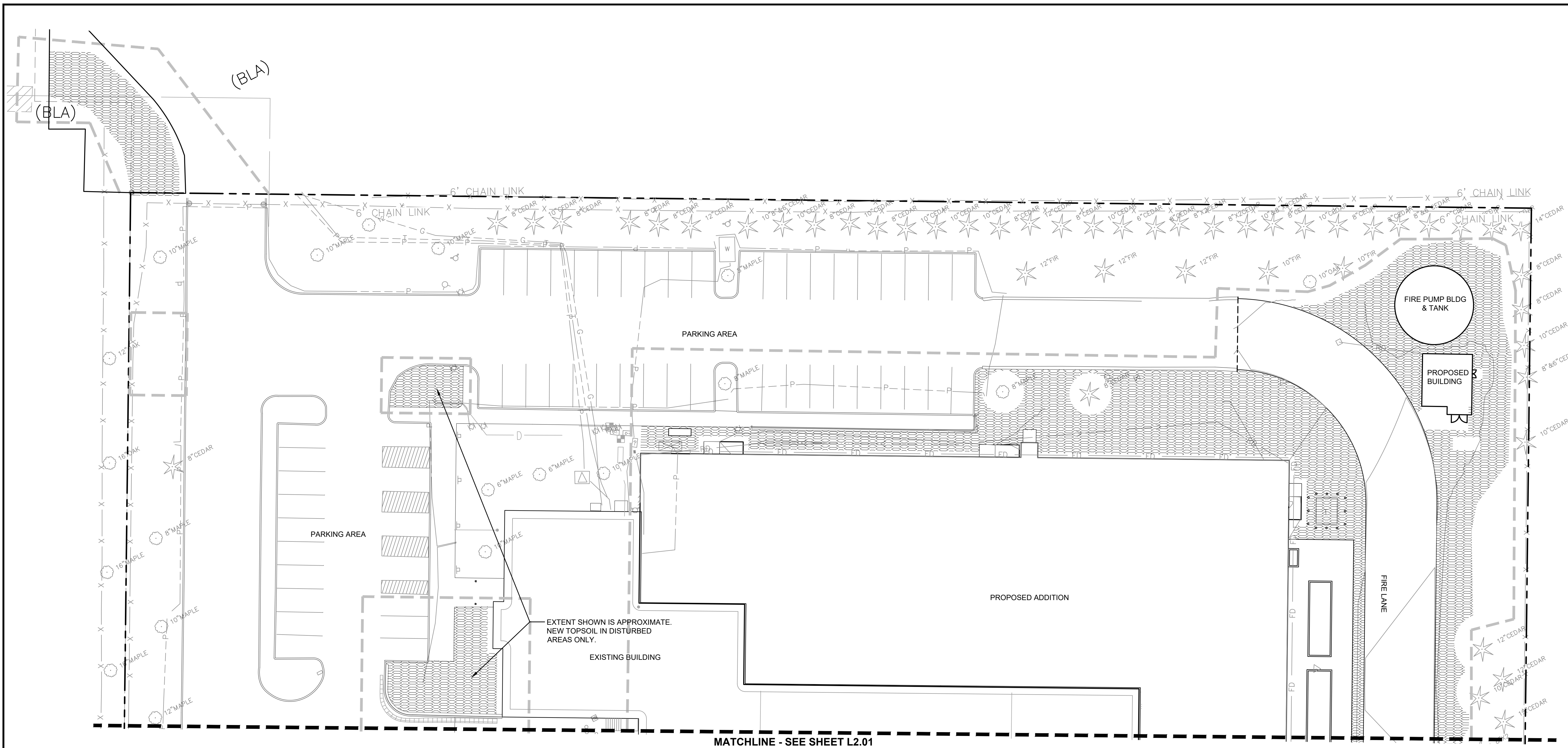
**L1.02**

5 of 12 Sheets



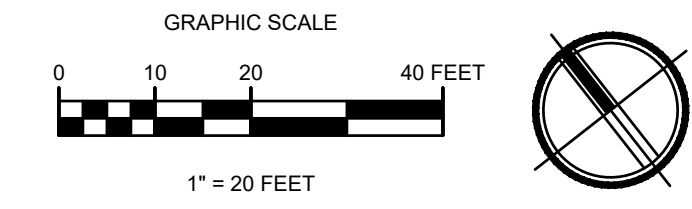


NOTICE  
 ALTERATION OF THIS DOCUMENT SHALL INVALIDATE THE PROFESSIONAL SEAL AND SIGNATURE. PUBLICATION OF THIS DOCUMENT DOES NOT REPRESENT THAT THE DESIGNER HAS REVIEWED THE DOCUMENT FOR THE PROJECT IDENTIFIED IN THIS BLOCK AND IS NOT TO BE USED FOR OTHER PROJECTS OR ACCORD TO THAT PROJECT OR FOR ANY OTHER PROJECT.



1

**SOILS PLAN**



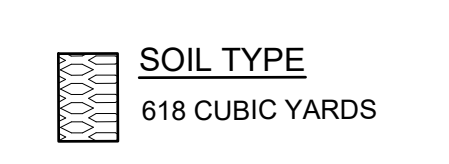
**NOTES**

- SEE SHEETS L0.01 FOR SPECIFICATIONS

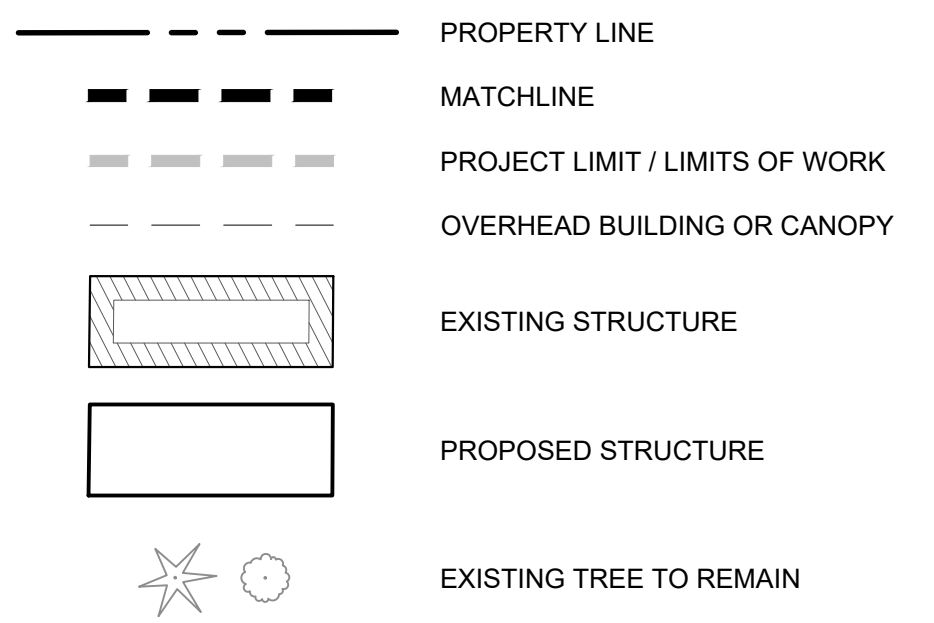
**SOILS NOTES**

- PER CITY OF PUYALLUP MUNICIPAL CODE VMS 8.2.B.B. THE PROJECT LANDSCAPE ARCHITECT SHALL UTILIZE ONE OF THE DESIGN METHODS OUTLINED IN APPENDIX 20.9 IN INCORPORATING THIS STANDARD. THE LANDSCAPE ARCHITECT SHALL ESTIMATE TOTAL TOPSOIL AND COMPOST IMPORT VOLUMES AND SPECIFY THE TOPSOIL AND COMPOST SOURCE DURING THE FINAL LANDSCAPE PLAN REVIEW. A TOPSOIL DELIVERY TICKET(S), INVOICE(S), OR OTHER PHYSICAL PROOF THAT THE CORRECT QUANTITY OF TOPSOIL WAS DELIVERED SHALL BE PROVIDED AT THE TIME OF FINAL INSPECTION.

**SOILS LEGEND**



**LEGEND**



Revisions:

Sheet Title:  
**SOILS PLAN**

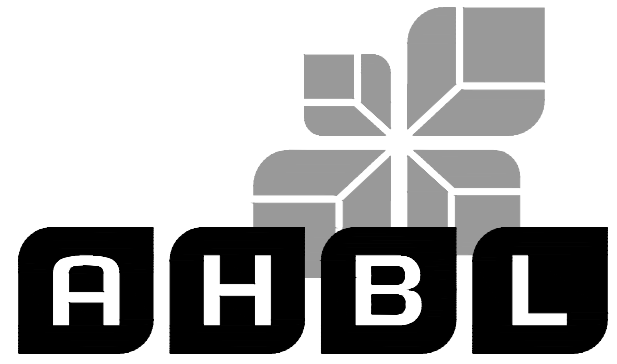
Designed by: MAMIAG Drawn by: MAMIAG Checked by: CS

Sheet No.

**L2.00**

6 of 12 Sheets





TACOMA · SEATTLE · SPOKANE · TRI-CITIES

2215 North 30th Street, Suite 300, Tacoma, WA 98403  
253.383.2422 TEL 253.383.2572 FAX www.ahbl.com WEB

Project Title:

### COASTAL PACIFIC FOOD DISTRIBUTION PUYALLUP

Client:

1942 NORTHWOOD DRIVE  
SALISBURY, MARYLAND 21801

MATT SMITH

Project No.

2230491.40

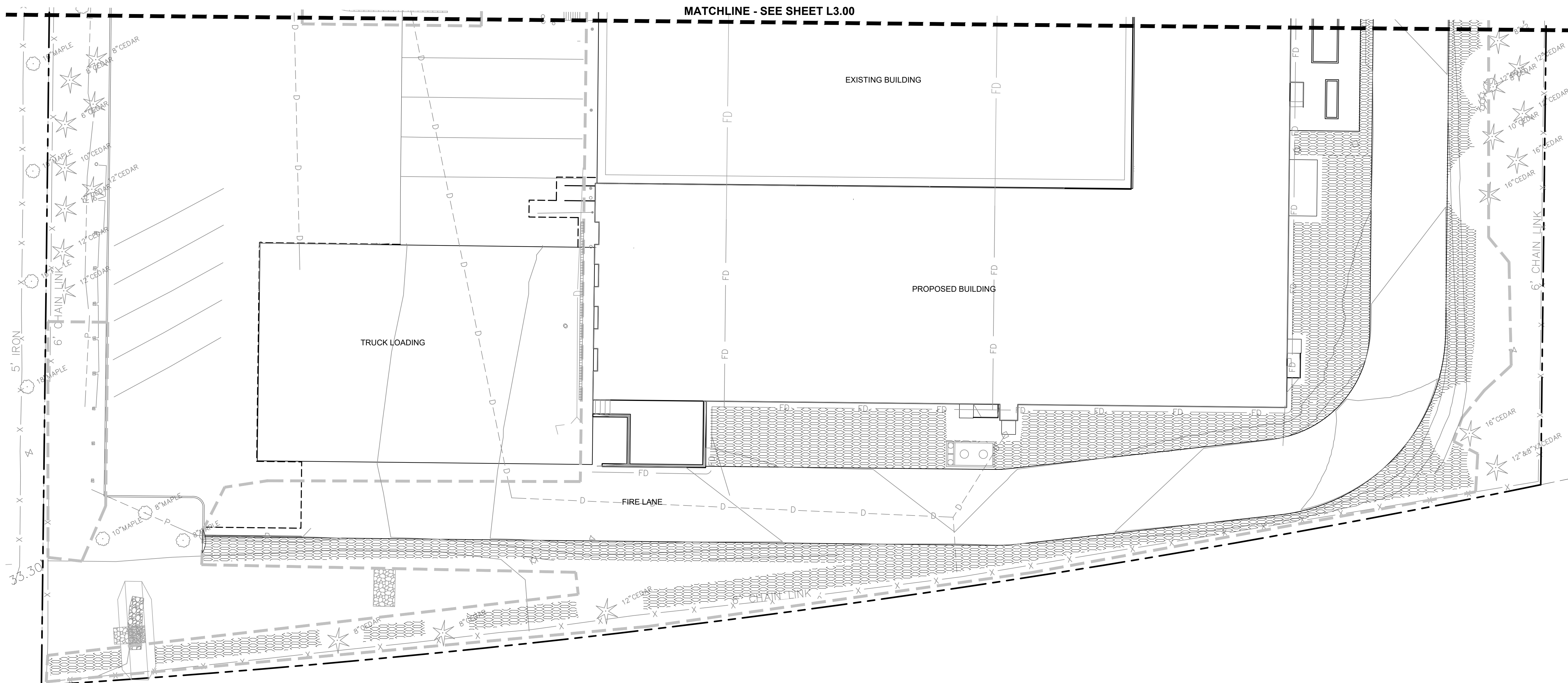
Issue Set & Date:

### ISSUE FOR PERMIT (REVISION A)

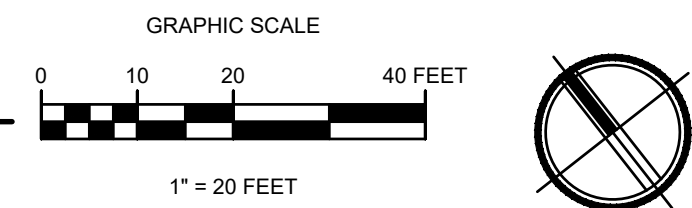
05/15/2024



NOTICE  
ALTERATION OF THIS DOCUMENT SHALL INVALIDATE THE  
PROFESSIONAL SEAL AND SIGNATURE. PUBLICATION OF  
THIS DOCUMENT DOES NOT REPRESENT THE DESIGNER'S  
OR ANY OTHER PARTY'S LIABILITY. THIS DOCUMENT IS THE ORIGINAL AND IS NOT TO BE USED FOR REPAIR, REUSE, OR  
ADDITION TO THAT PROJECT OR FOR ANY OTHER PROJECT.



## 1 SOILS PLAN



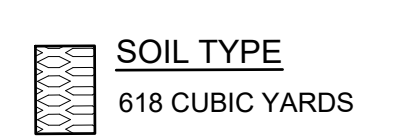
### NOTES

- SEE SHEET L0.01 FOR SPECIFICATIONS
- SEE SHEET L4.00 FOR SOIL AMENDMENT & DEPTH DETAIL

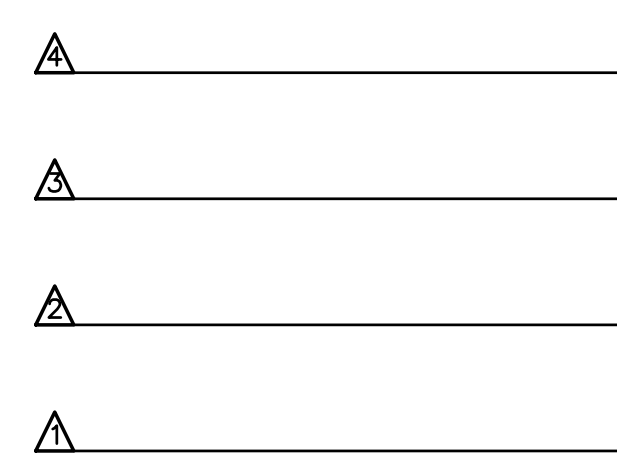
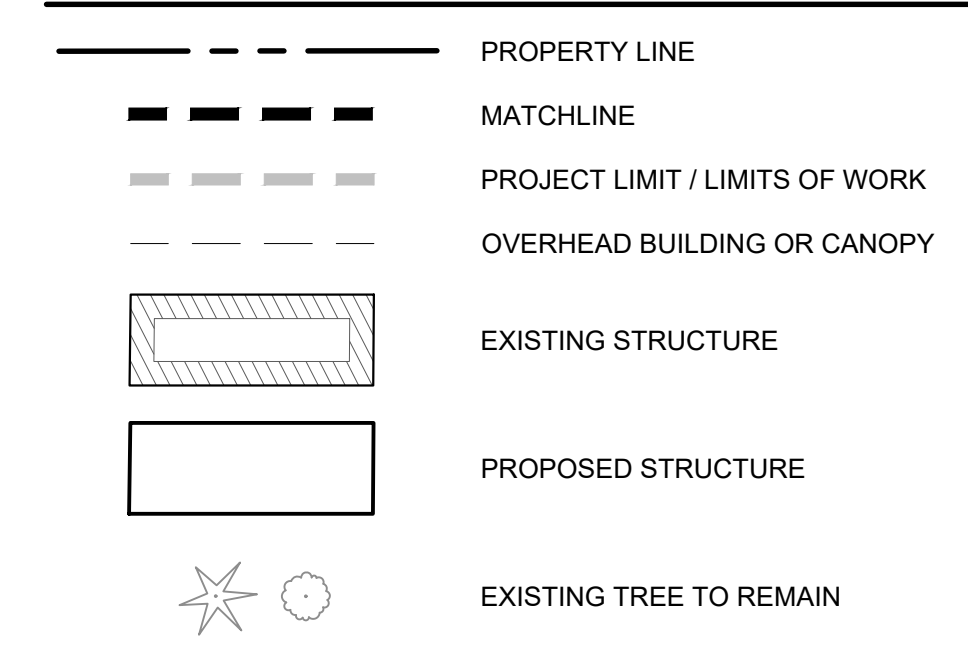
### SOILS NOTES

- PER CITY OF PUYALLUP MUNICIPAL CODE VMS 9.2.B.B. THE PROJECT LANDSCAPE ARCHITECT SHALL UTILIZE ONE OF THE DESIGN METHODS OUTLINED IN APPENDIX 20.9 IN INCORPORATING THIS STANDARD. THE LANDSCAPE ARCHITECT SHALL ESTIMATE TOTAL TOPSOIL AND COMPOST IMPORT VOLUMES AND SPECIFY THE TOPSOIL AND COMPOST SOURCE DURING THE FINAL LANDSCAPE PLAN REVIEW. A TOPSOIL DELIVERY TICKET(S), INVOICE(S), OR OTHER PHYSICAL PROOF THAT THE CORRECT QUANTITY OF TOPSOIL WAS DELIVERED SHALL BE PROVIDED AT THE TIME OF FINAL INSPECTION.

### SOILS LEGEND



### LEGEND



Revisions:

Sheet Title:

## SOILS PLAN

Designed by: MAM/AG Drawn by: MAM/AG Checked by: CS

Sheet No.

# L2.01

7 of 12 Sheets



Project Title:

**COASTAL PACIFIC  
FOOD DISTRIBUTION  
PUYALLUP**

Client:

1942 NORTHWOOD DRIVE  
SALISBURY, MARYLAND 21801

MATT SMITH

Project No.

2230491.40

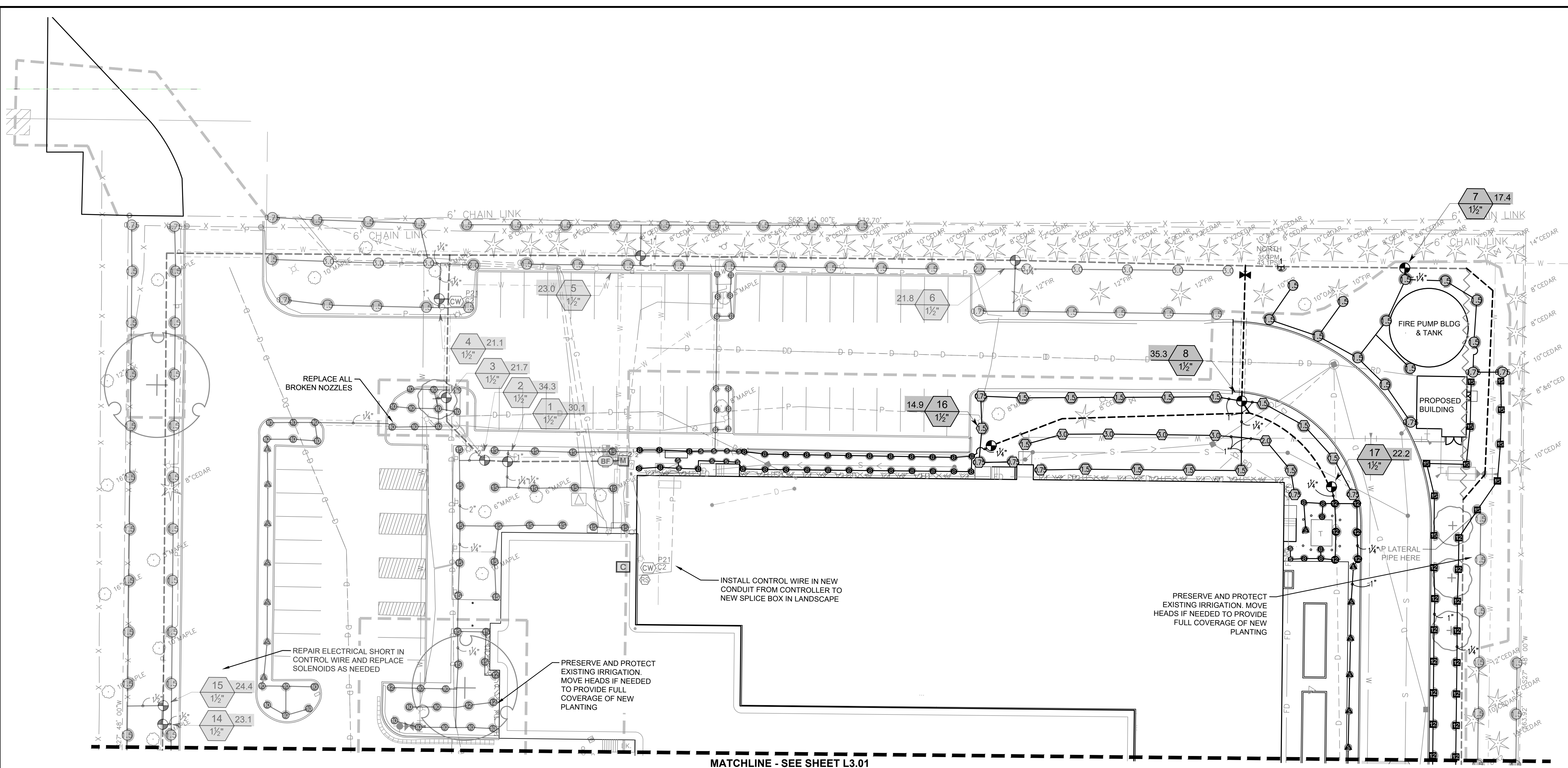
Issue Set & Date:

**ISSUE FOR PERMIT  
(REVISION A)**

05/15/2024

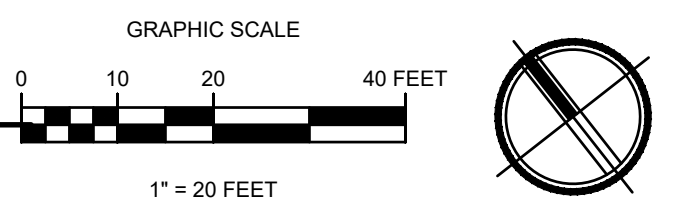


NOTICE  
ALTERATION OF THIS DOCUMENT SHALL INVALIDATE THE  
PROFESSIONAL SEAL AND SIGNATURE. PUBLICATION OF  
THIS DOCUMENT DOES NOT REPRESENT THE DESIGNER'S  
ENDORSEMENT OF THE PROJECT OR THE QUALITY OF THE  
WORK. THIS DOCUMENT IS THE PROPERTY OF THE DESIGNER  
AND IS NOT TO BE USED FOR ANY OTHER PROJECT, OR  
ADDITION TO THAT PROJECT OR FOR ANY OTHER PROJECT.



MATCHLINE - SEE SHEET L3.01

**1 IRRIGATION PLAN**



**NOTES**

1. SEE SHEET L0.01 FOR SPECIFICATIONS
2. SEE SHEET L3.01 FOR IRRIGATION NOTES
3. SEE SHEET L4.01 FOR IRRIGATION DETAILS

Revisions:


Sheet Title:

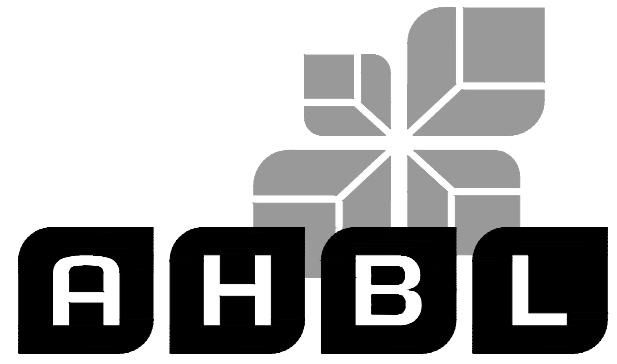
**IRRIGATION PLAN**

Designed by: MAM/AG Drawn by: MAM/AG Checked by: CS

Sheet No.

**L3.00**

8 of 12 Sheets



TACOMA · SEATTLE · SPOKANE · TRI-CITIES

2215 North 30th Street, Suite 300, Tacoma, WA 98403  
253.383.2422 TEL 253.383.2572 FAX www.ahbl.com WEB

Project Title:

# COASTAL PACIFIC FOOD DISTRIBUTION PUYALLUP

Client:

1942 NORTHWOOD DRIVE  
SALISBURY, MARYLAND 21801

MATT SMITH

Project No.

2230491.40

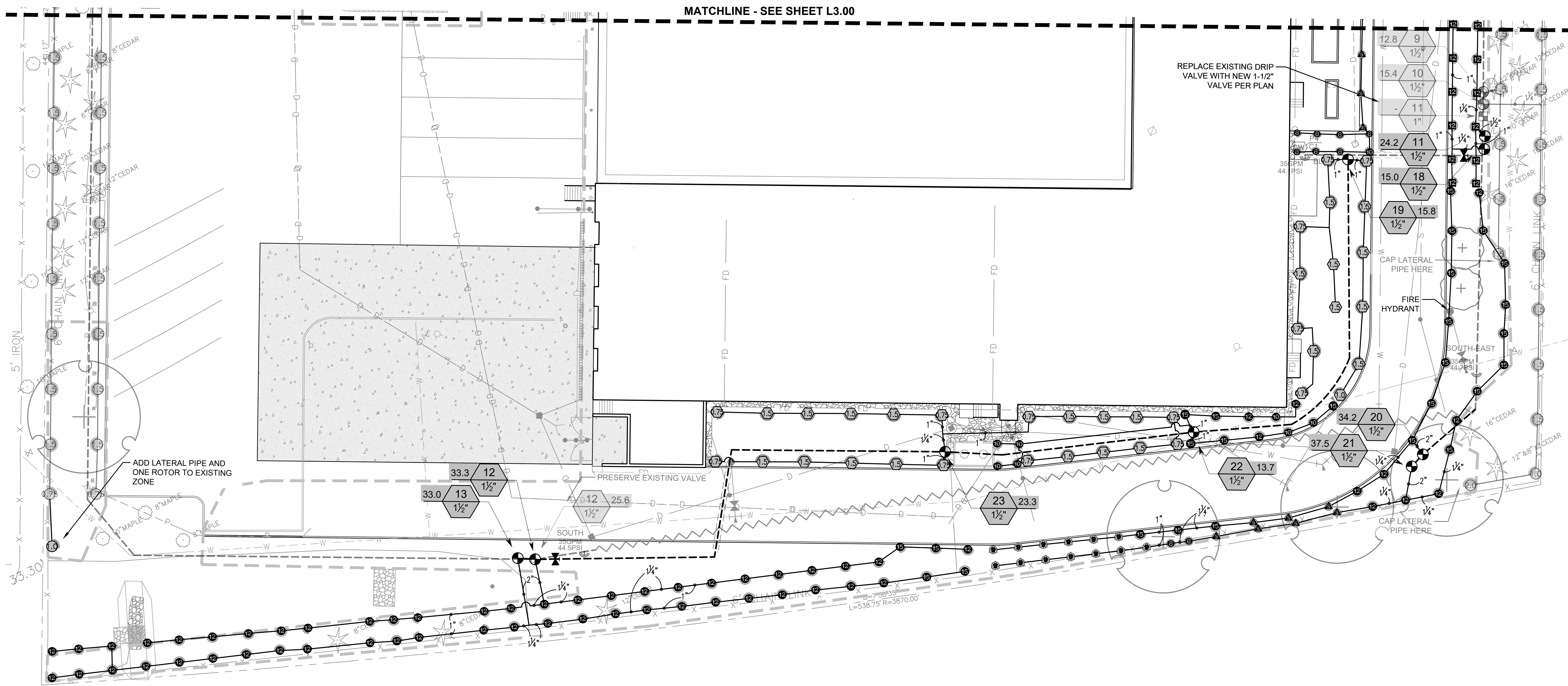
Issue Set & Date:

## ISSUE FOR PERMIT (REVISION A)

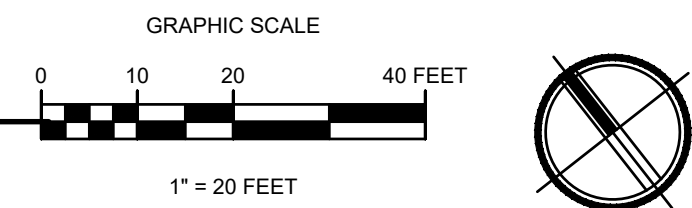
05/15/2024



NOTICE  
ALTERATION OF THIS DOCUMENT SHALL INVALIDATE THE  
PROFESSIONAL SEAL AND SIGNATURE. PUBLICATION OF  
THIS DOCUMENT DOES NOT GUARANTEE THAT THE  
OWNER HAS BEEN ADVISED OF THE EXISTENCE OF THIS  
ISSUE FOR PERMIT. THE DOCUMENT IS FOR USE  
ONLY FOR THE PROJECT IDENTIFIED IN THE BLOCK  
AND NOT BE USED FOR OTHER PROJECTS, OR  
ACCORD TO THAT PROJECT OR FOR ANY OTHER PROJECT.



### 1 IRRIGATION PLAN



#### GENERAL IRRIGATION NOTES

- NO SUBSTITUTIONS OF EQUIPMENT OR DESIGN CHANGES SHALL BE PERMITTED UNLESS APPROVED BY THE OWNER.
- IRRIGATION LINES AND VALVES MAY BE SHOWN IN HARD SURFACE AREAS OR OUTSIDE LANDSCAPE AREAS FOR GRAPHIC CLARITY. LOCATE ALL IRRIGATION LINES IN LANDSCAPE AREAS OR IN SLEEVES UNDER PAVEMENT.
- IRRIGATION CONTRACTOR SHALL COORDINATE INSTALLATION OF IRRIGATION CONDUIT AND SLEEVES UNDER HARD SURFACES WITH RESPECTIVE CONTRACTORS.
- CONTRACTOR SHALL BE RESPONSIBLE FOR OBTAINING ALL PERMITS, TESTS, AND INSPECTIONS REQUIRED FOR THE IRRIGATION SYSTEM.
- CALL FOR LOCATES PRIOR TO DIGGING AT 811. CONTRACTOR IS RESPONSIBLE TO VERIFY UTILITY LOCATIONS. IF UTILITIES ARE DAMAGED IN THE COURSE OF WORK, CONTRACTOR SHALL INFORM THE OWNER AND MAKE ANY REPAIRS REQUIRED, AT NO COST TO THE OWNER.
- ALL SLEEVING SHALL BE MARKED, SEALED AND STAKED. ALL SLEEVES SHALL BE TWICE THE SIZE OF THE LINE OR COMBINED LINES. MINIMUM SLEEVE SIZE SHALL BE 4-INCHES IF LOCATED UNDER ROADWAY OR DRIVE AISLE.
- COORDINATE SLEEVING LOCATIONS WITH ELECTRICAL CONDUIT.
- SPLICE CONTROL WIRES WITHIN VALVE BOXES ONLY, USING 3M-DBY, OR APPROVED SPLICE KITS, AND PROVIDE A 24" EXPANSION LOOP FOR ALL CONTROL WIRES WITHIN EACH VALVE BOX. KEEP WIRE SPLICES TO A MINIMUM. PROVIDE CLEAN WIRE CUTS WITH NEW SPLICE KITS AT ALL SPLICES INCLUDING ANY SPLICE THAT IS DISCONNECTED AND RECONNECTED FOR ANY REASON OR PERIOD OF TIME.
- VALVE BOXES SHALL BE COMMERCIAL-GRADE POLYETHYLENE OR HDPE AND SUITABLE FOR LIGHT DUTY APPLICATIONS.
- INSTALLER TO ADJUST ALL ZONE CONTROL VALVES TO THE CORRECT OPERATING PRESSURE. SEE VALVE SCHEDULE FOR OPERATING PSI.
- CONTRACTOR SHALL HAND TRENCH IRRIGATION DITCHES WHEN WITHIN 20 FEET, OR WITHIN A DELINEATED ROOT PROTECTION ZONE, OF EXISTING TREES TO REMAIN. AVOID CUTTING ANY ROOTS OVER 3" - 4" IN DIAMETER WITHIN THE ROOT PROTECTION ZONE.
- INSTALLER SHALL BE RESPONSIBLE FOR KEEPING EXACT ACCURATE NOTES AND "AS-BUILTS" FOR THE CREATION OF THE "RECORD DRAWINGS" OF THE INSTALLED SYSTEM.
- CONTRACTOR SHALL PROVIDE IRRIGATION MAINTENANCE THROUGH THE PLANT ESTABLISHMENT PERIOD INCLUDING WINTERIZATION(S) AND SPRING START-UP(S).

#### POINT OF CONNECTION NOTES

- CONTRACTOR SHALL VERIFY EXISTING STATIC PRESSURE IS 58 PSI AT THE METER AND SUBMIT WRITTEN VERIFICATION TO THE LANDSCAPE ARCHITECT. NOTIFY THE LANDSCAPE ARCHITECT OF DISCREPANCIES GREATER THAN 5 POUNDS OF DESIGN PRIOR TO INSTALLATION OF ANY IRRIGATION EQUIPMENT.
- POC NUMBER 01: EXISTING 1-1/2" IRRIGATION METER.
  - THE SYSTEM DESIGN IS BASED ON OPERATING 1 ZONE AT A TIME USING AN EXISTING IRRIGATION METER AND EXISTING MAIN LINE. CONTRACTOR SHALL FIELD VERIFY SIZE AND LOCATION.
- COORDINATE METER SCOPE OF WORK WITH ALL APPLICABLE TRADES.
- IRRIGATION CONTRACTOR SHALL TEST THE BACKFLOW PREVENTER AND MAKE SURE IT'S INSTALLED PER LOCAL WATER DISTRICT CODE AND STANDARDS.
- NOTIFY THE OWNER IMMEDIATELY IF THE POINT OF CONNECTION ASSUMPTIONS MADE HERE DO NOT MATCH FIELD CONDITIONS.

#### IRRIGATION SYSTEM DESIGN NOTES

- THIS DESIGN ALTERS THE EXISTING SYSTEM WITH RELOCATION OF CONTROLLER AND CONTROL WIRE, NEW MAIN LINE AND HYDROZONES AS SHOWN.
- CONTRACTOR SHALL FIELD VERIFY ALL EXISTING IRRIGATION EQUIPMENT AND ZONES IMPACTED BY THE CONSTRUCTION OF THIS PROJECT PRIOR TO CONSTRUCTION.
- PRESERVE AND PROTECT EXISTING IRRIGATION TO REMAIN. ALL EXISTING EQUIPMENT SHOWN ON L3.00 AND L3.01 IS TO REMAIN. REPAIR EXISTING COMPONENTS WHICH ARE BROKEN.

#### NOTES

- SEE SHEET L0.01 FOR SPECIFICATIONS
- SEE SHEET L3.01 FOR IRRIGATION NOTES
- SEE SHEET L4.01 FOR IRRIGATION DETAILS



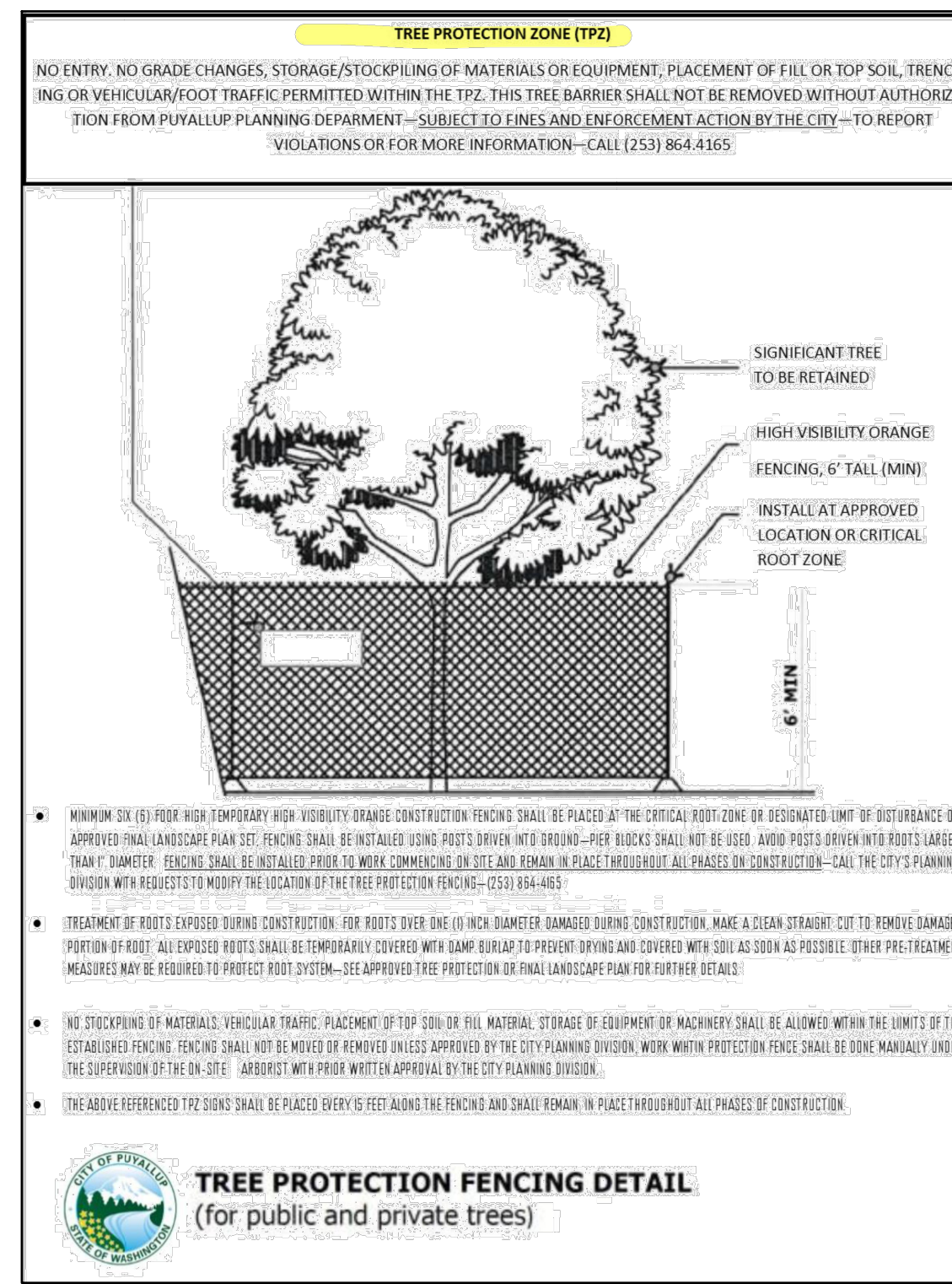
Designed by: MAM/AG Drawn by: MAM/AG Checked by: CS

Sheet No.

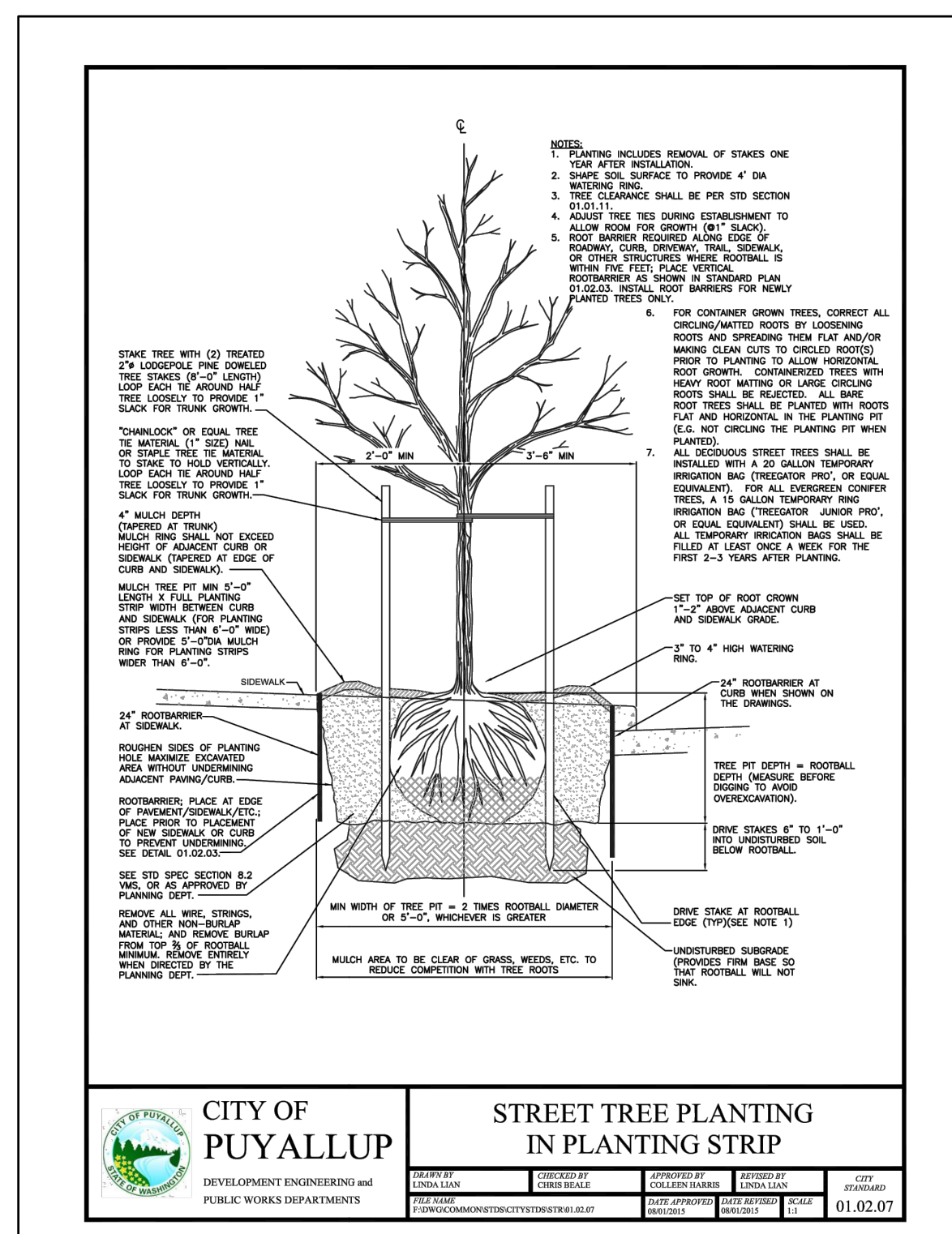
# L3.01

9 of 12 Sheets

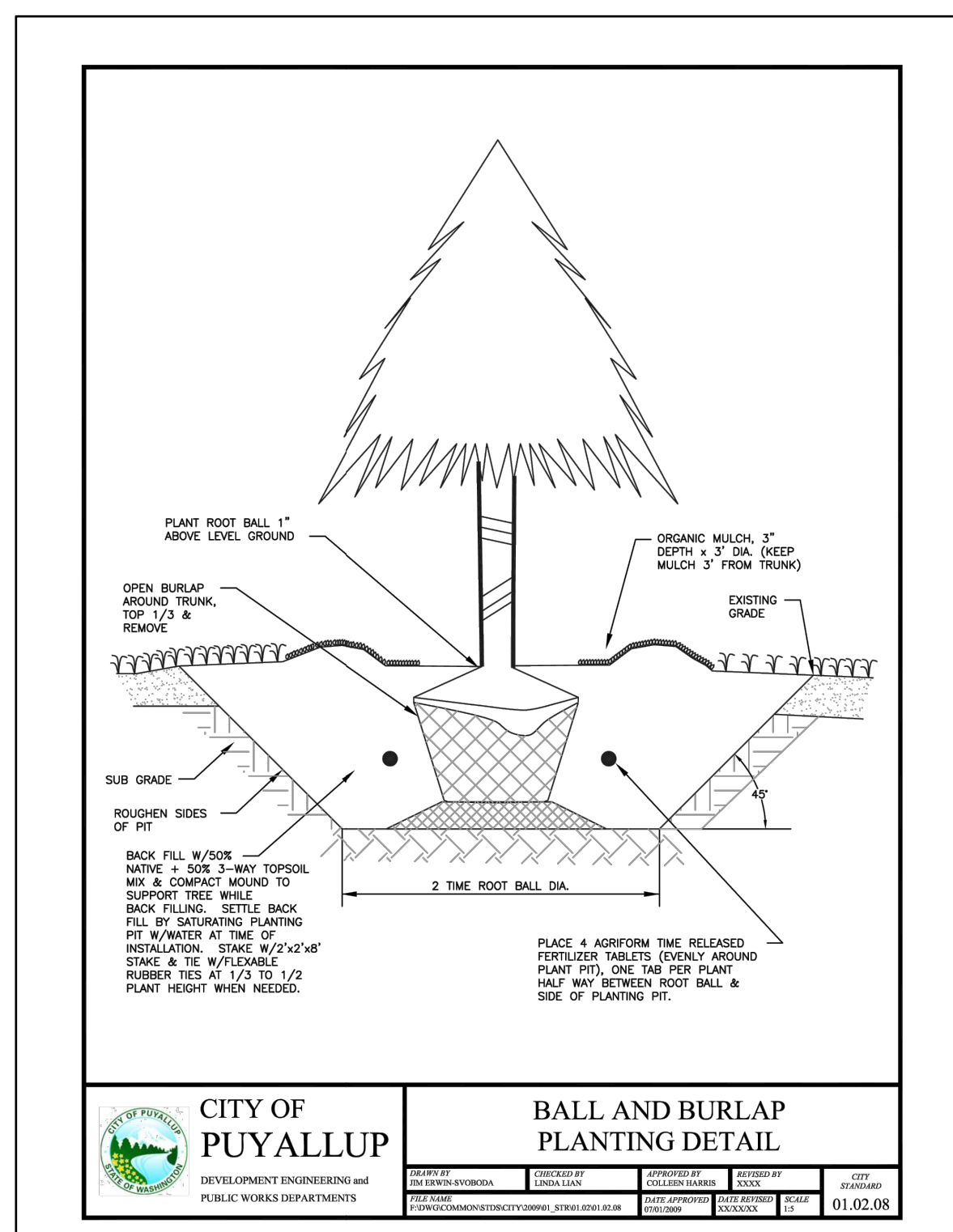




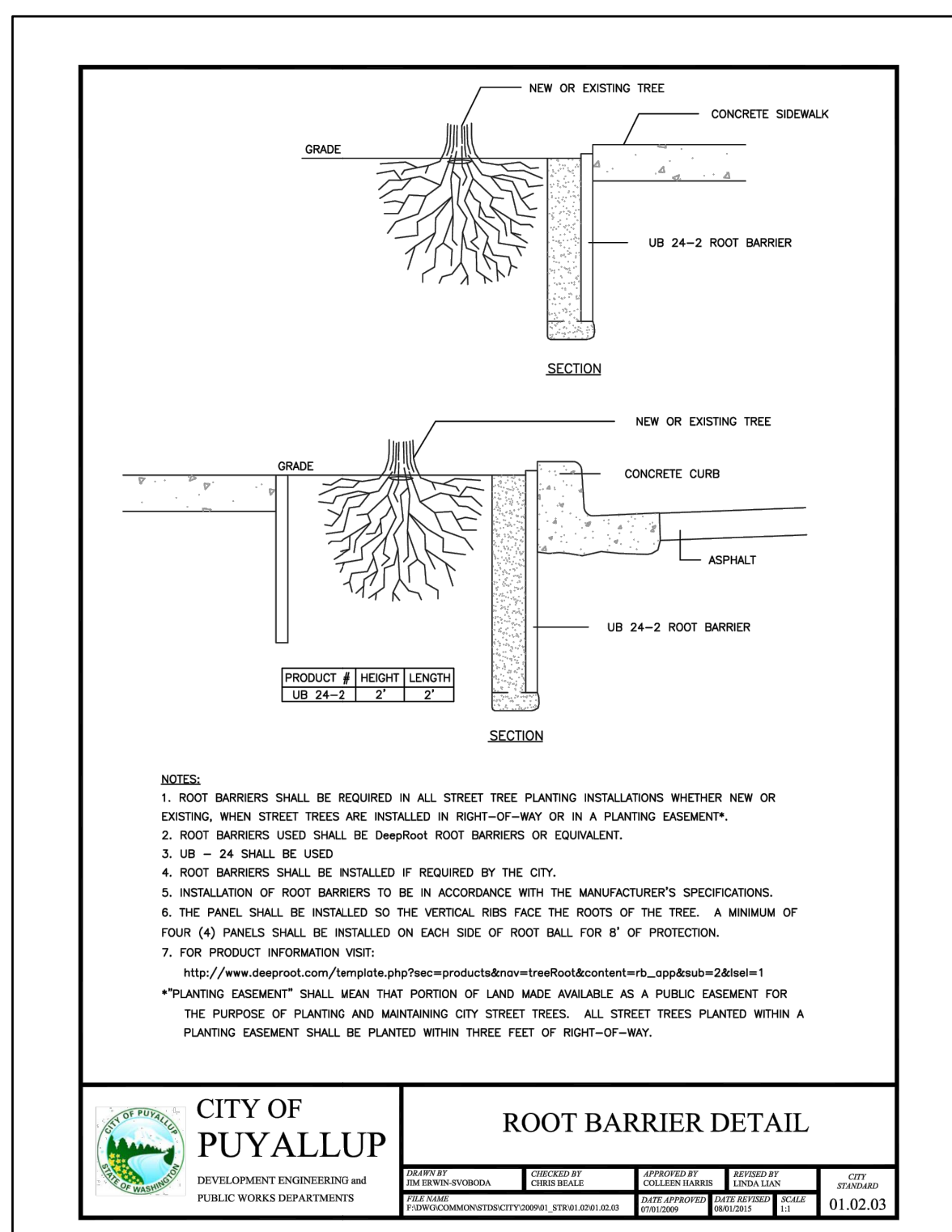
**1 TREE PROTECTION FENCING DETAIL**  
1" = 1'-0"  
P-2023-PAC-84



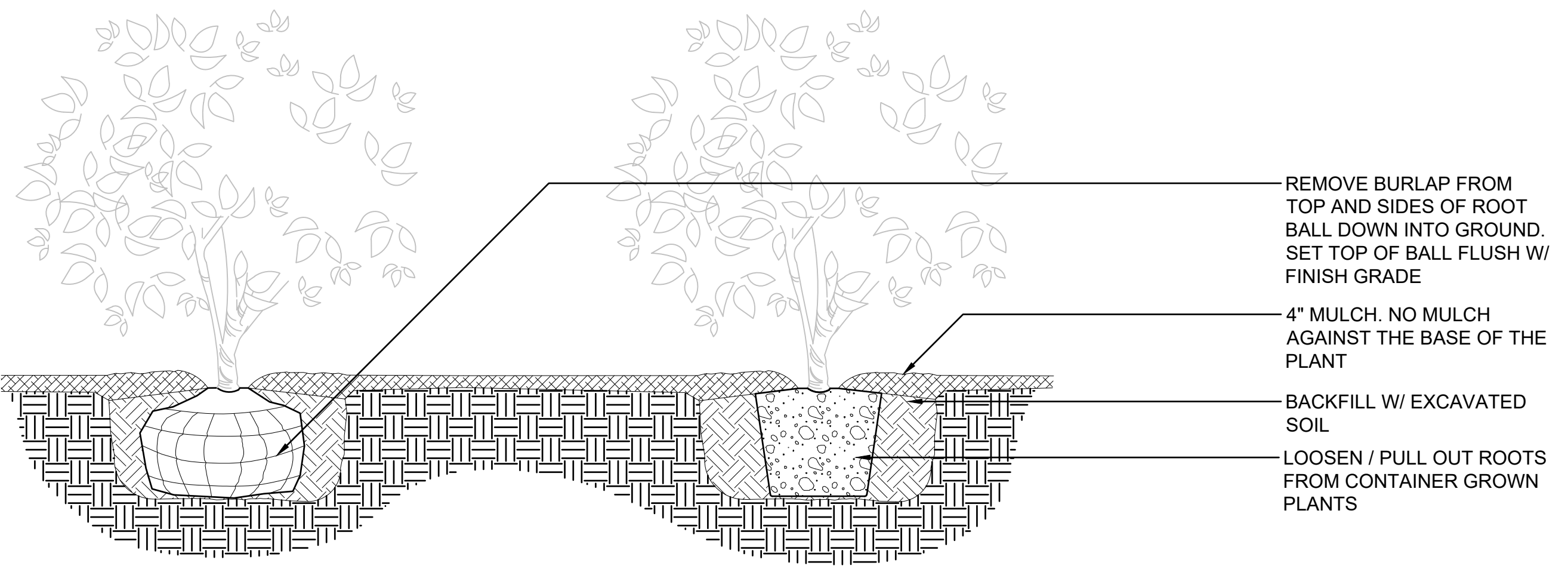
**2 STREET TREE PLANTING IN PLANTING STRIP**  
1" = 1'-0"  
P-2023-PAC-86



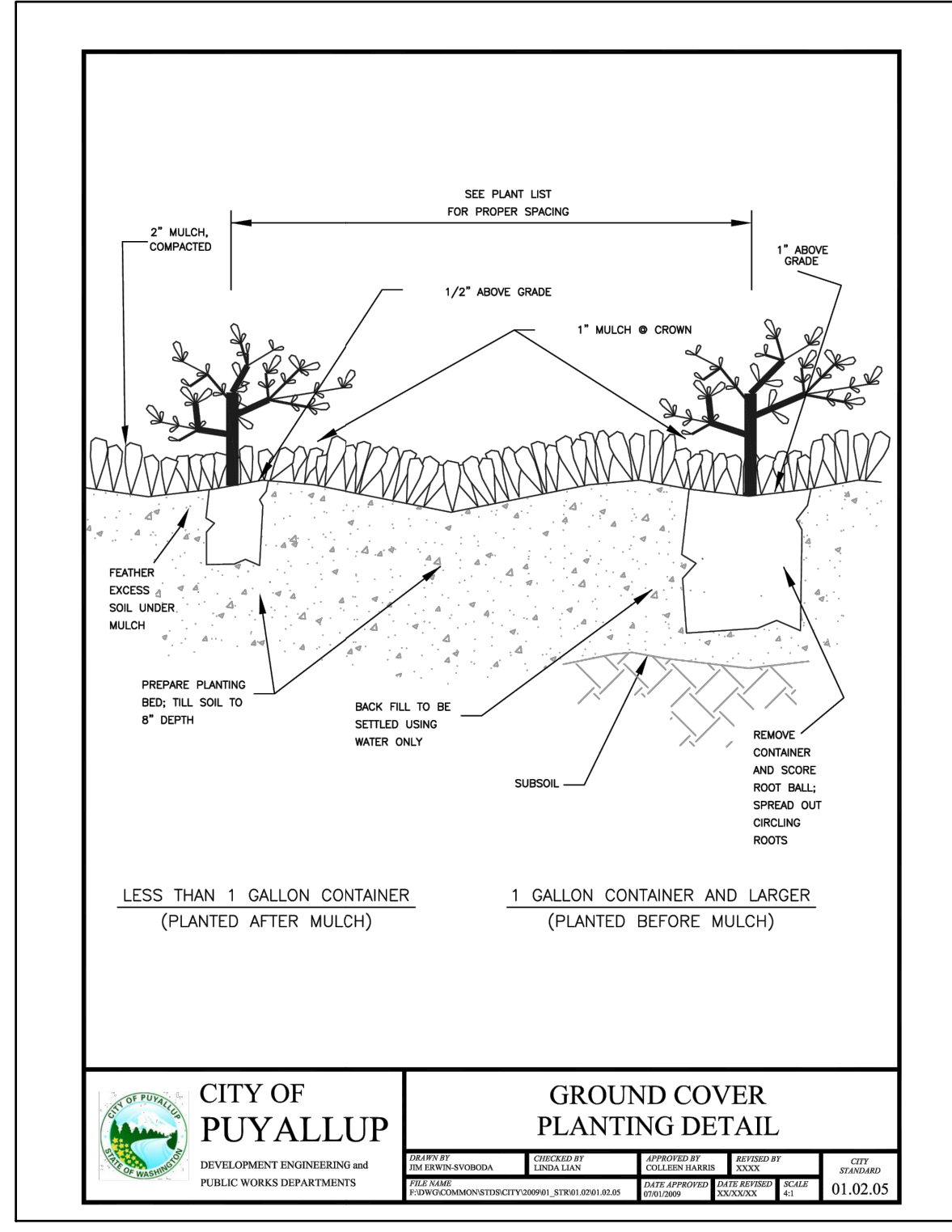
**3 BALL AND BURLAP PLANTING DETAIL**  
1" = 1'-0"  
P-2023-PAC-88



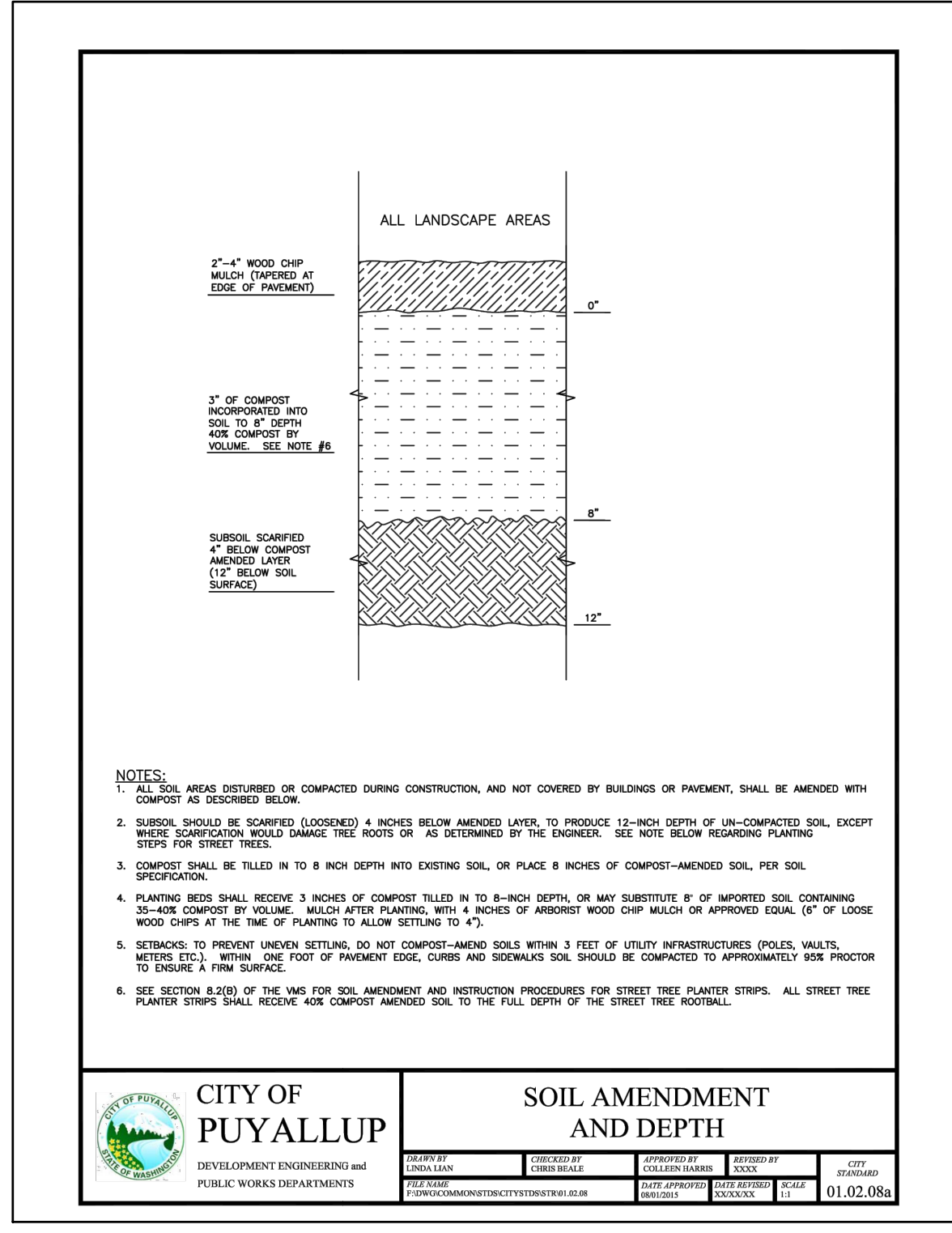
**4 ROOT BARRIER DETAIL**  
1" = 1'-0"  
P-2023-PAC-87



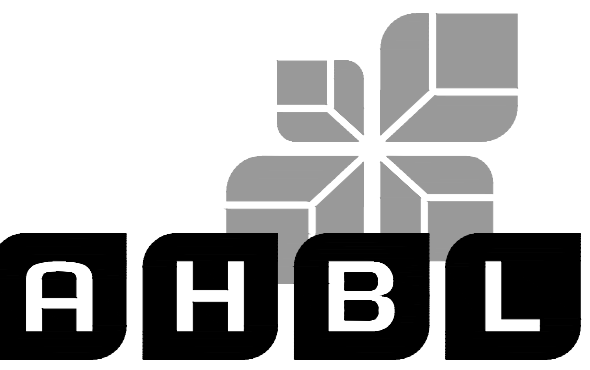
**5 SHRUB PLANTING**  
NTS  
P-2023-PAC-58



**6 GROUNDCOVER PLANTING**  
1" = 1'-0"  
P-2023-PAC-85



**7 SOIL AMENDMENT AND DEPTH**  
1" = 1'-0"  
P-2023-PAC-89



TACOMA · SEATTLE · SPOKANE · TRI-CITIES  
2215 North 30th Street, Suite 300, Tacoma, WA 98403  
253.383.2422 TEL 253.383.2572 FAX www.ahbl.com WEB

**Project Title:**  
**COASTAL PACIFIC FOOD DISTRIBUTION PUYALLUP**

**Client:**  
1942 NORTHWOOD DRIVE  
SALISBURY, MARYLAND 21801

**MATT SMITH**

**Project No.**  
2230491.40

**Issue Set & Date:**

**ISSUE FOR PERMIT (REVISION A)**  
05/15/2024



**NOTICE**  
ALTERATION OF THIS DOCUMENT SHALL INVALIDATE THE PROFESSIONAL SEAL AND SIGNATURE. PUBLICATION OF THIS DOCUMENT DOES NOT WARRANT THAT THE DESIGN OR CONSTRUCTION SHALL BE FREE OF DEFECTS OR THAT THE DESIGN OR CONSTRUCTION SHALL BE FREE OF DEFECTS OR THAT THE DESIGN OR CONSTRUCTION SHALL BE FREE OF DEFECTS OR THAT THE DESIGN OR CONSTRUCTION SHALL BE FREE OF DEFECTS.

**Revisions:**

**Sheet Title:**

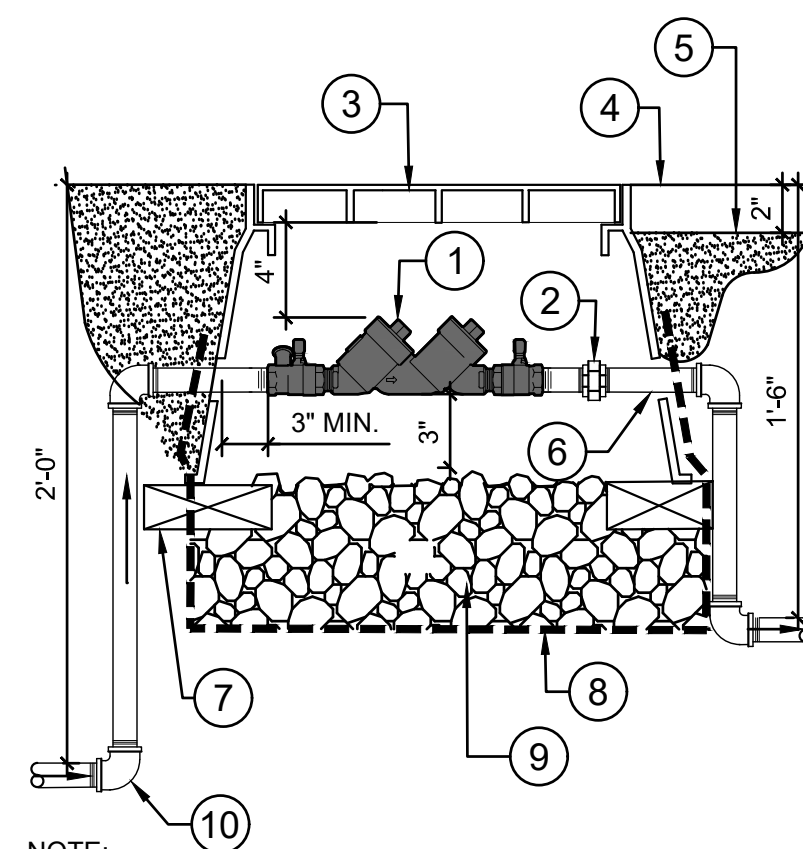
**PLANTING DETAILS**

**Designed by:** MAMIAG **Drawn by:** MAMIAG **Checked by:** CS

**Sheet No.**

**L4.00**  
11 of 12 Sheets





- KEYNOTES:**
- 1 DCVA, SEE SPEC
  - 2 PVC SCH. 80 UNION
  - 3 PLASTIC VALVE BOX, SEE SPEC
  - 4 FINISH GRADE AT LAWN
  - 5 FINISH GRADE IN SHRUB AREAS
  - 6 PVC SCH. 80 NIPPLES AND FITTINGS
  - 7 CONCRETE BLOCKS TO SUPPORT VALVE BOX AT EACH CORNER
  - 8 FILTER GABRIC, WRAP AROUND VALVE BOX SIDES
  - 9 DRAIN ROCK, MIN 6" DEEP
  - 10 FROM METER AND GATE VALVE

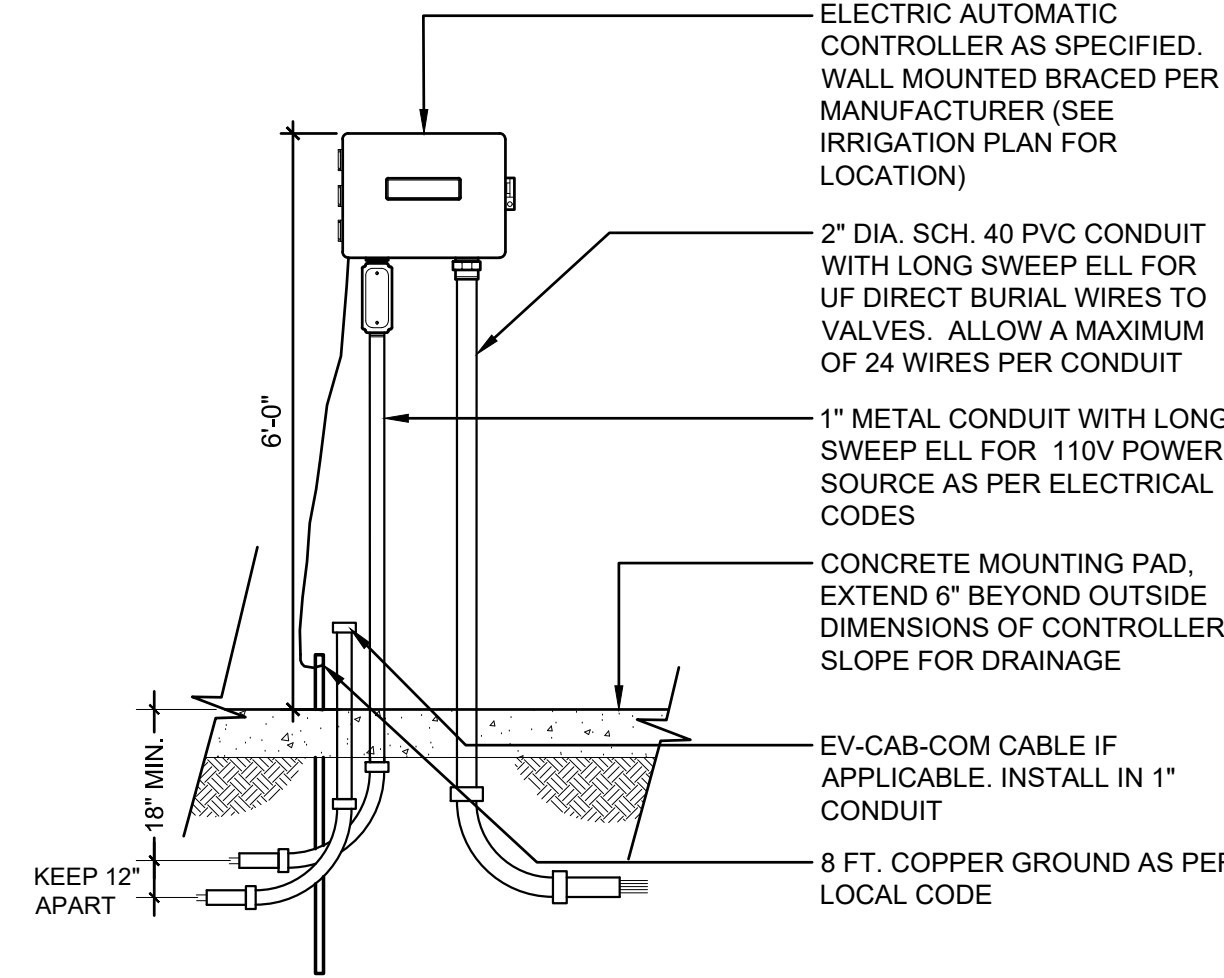
**NOTE:**

1. INSTALL DCVA PER LOCAL CODE.
2. CONTRACTOR TO PAY FOR AND OBTAIN ALL NECESSARY PERMITS AND INSPECTION.
3. DCVA TO BE TESTED BY A CERTIFIED TESTER AT COMPLETION.
4. DO NOT ALLOW VALVE BOX TO REST ON PIPE.
5. ALL PIPE AND FITTINGS SAME SIZE AS DCVA

**1 DCVA**

1 1/2" = 1'-0"

P-2023-PAC-21



**NOTES:**

1. DIMENSIONS ARE MINIMUM CLEARANCES.
2. ALL TRENCH BACKFILL MATERIAL SHALL BE CLEAN IMPORTED SAND.
3. DO NOT TAPE OR BUNDLE WIRES IN SLEEVES.
4. ALL SLEEVES TO BE TWICE THE SIZE OF THE COMBINED PIPES INSIDE.
5. SLEEVES REQUIRED UNDER ALL PAVED AREAS AND WALLS.
6. SLEEVE TO EXTEND 18" BEYOND THE EDGE OF PAVING ON BOTH SIDES.
7. INSTALL TRACER WIRE WITH MAIN LINE

**2 CONTROLLER WALL MOUNTED**

1/2" = 1'-0"

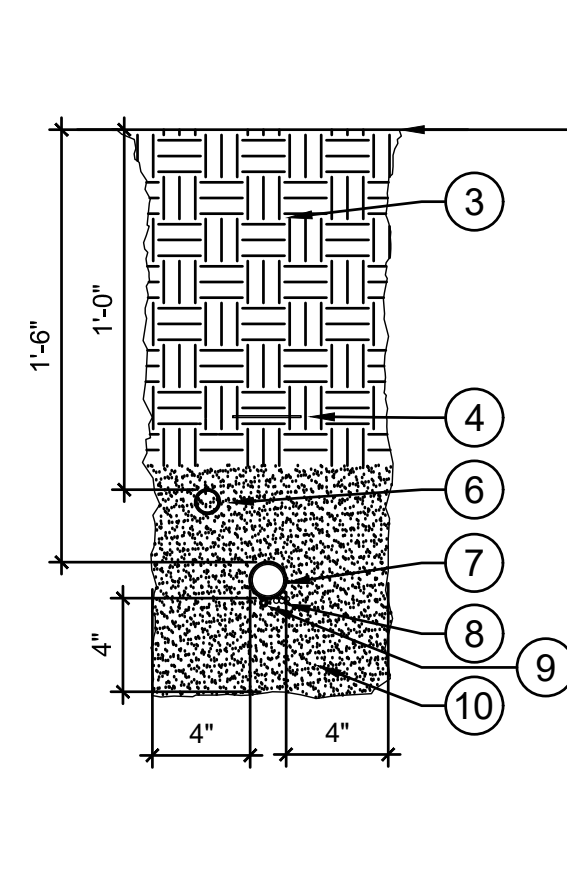
P-2023-PAC-19

**3 TRENCHING AND SLEEVING**

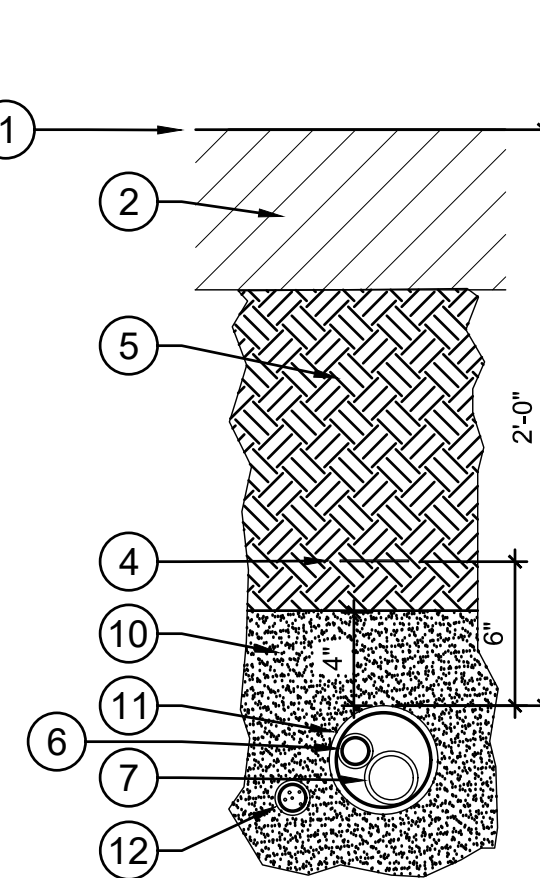
1 1/2" = 1'-0"

P-2023-PAC-11

**PLANTING**

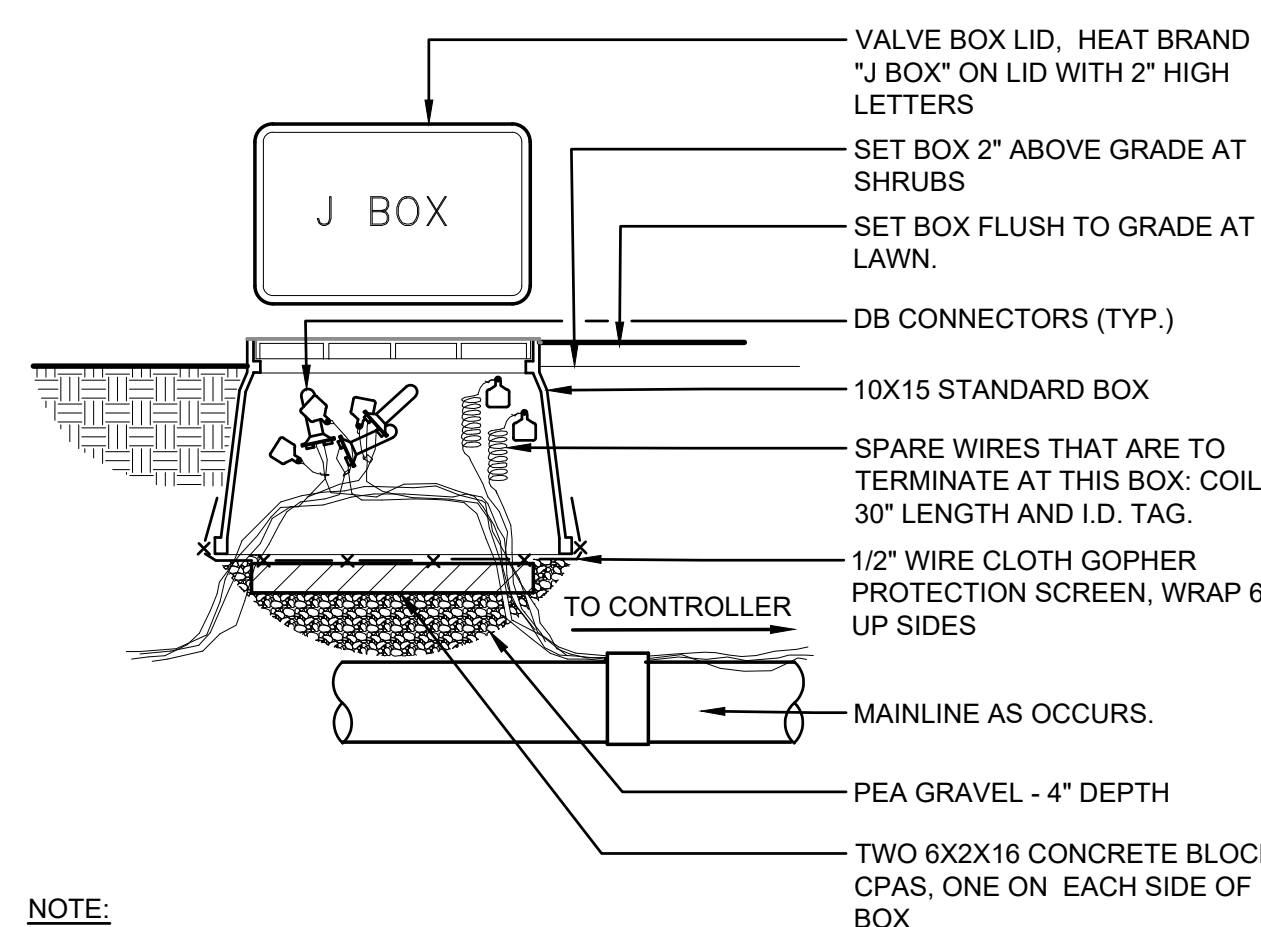


**PAVING**



**LEGEND**

- 1 FINISH GRADE
- 2 PAVING, SEE CIVIL PLAN
- 3 PLANTING SOIL
- 4 DETECTABLE WARNING TAPE 6" ABOVE ALL MAIN LINE
- 5 95% COMPACTED STRUCTURAL FILL
- 6 LATERAL LINE
- 7 MAIN LINE
- 8 CONTROL WIRES
- 9 TRACER WIRE
- 10 CLEAN SAND
- 11 SLEEVE
- 12 ELECTRICAL SLEEVE



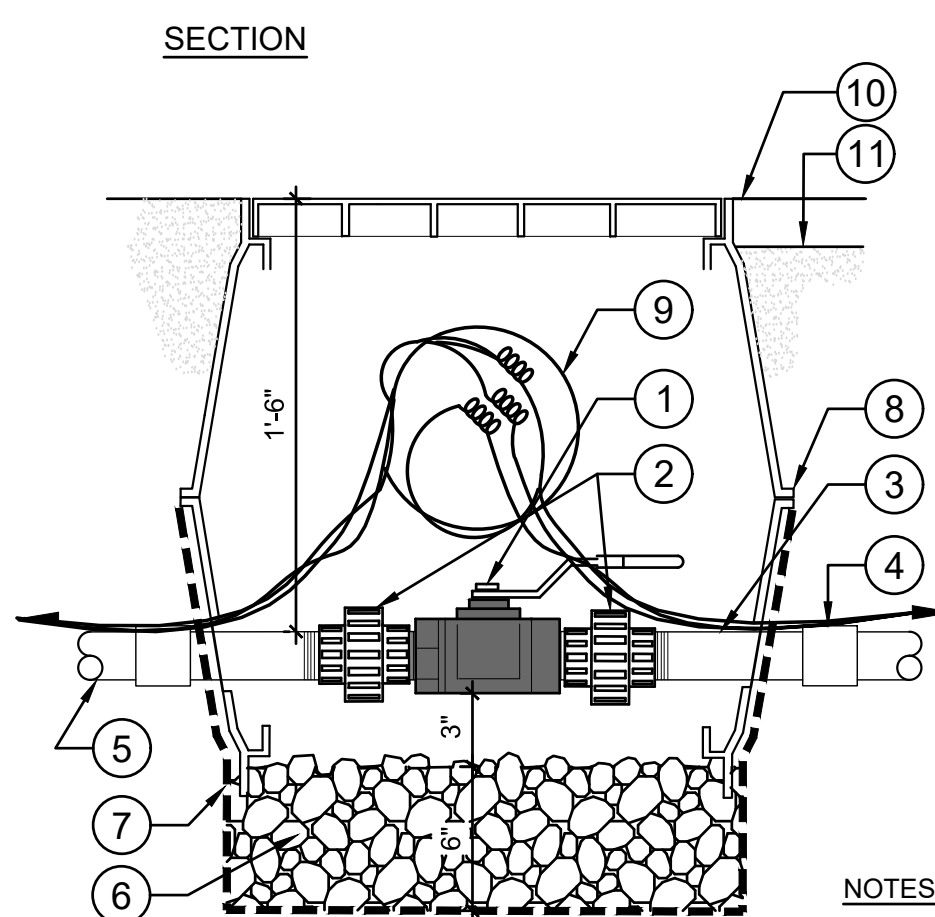
**NOTE:**

1. SPLICE CONTROL WIRES IN VALVE BOX ONLY.
2. LOOP, BUNDLE AND LABEL SPARE WIRES THAT ARE TO CONTINUE, AS OCCURS.

**4 WIRE SPLICE**

NTS

P-2023-PAC-14



**NOTES:**

1. USE TEFLON TAPE FOR ALL THREADED FITTINGS, NO PIPE DOPE
2. KEEP MIN. 3" CLEARANCE AROUND VALVE ON ALL SIDES
3. LEAVE EXTRA 36" CONTROL WIRE COILED INSIDE VALVE BOX
4. USE DBR WATERPROOF CONNECTORS

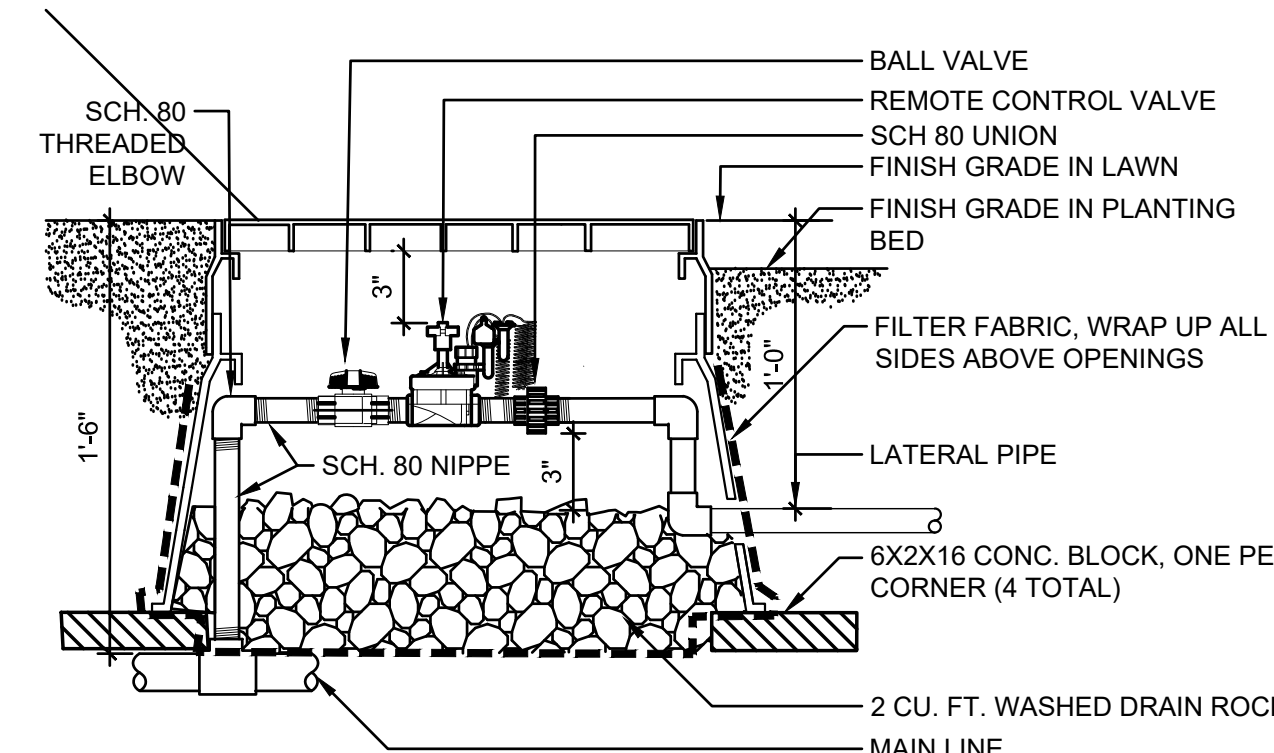
**5 ISOLATION BALL VALVE 3/4"- 2"**

1 1/2" = 1'-0"

P-2023-PAC-05

**KEYNOTES**

- 1 BRASS BALL ISOLATION VALVE, FULL PORT. SAME SIZE AS MAIN LINE
- 2 PVC SCH 80 UNION (2)
- 3 SCHEDULE 80 NIPPLES INSIDE VALVE BOX
- 4 TRANSITION FITTING
- 5 MAIN LINE, SEE DRAWING
- 6 WASHED DRAIN ROCK, MIN. 2 CU FT
- 7 FILTER FABRIC, WRAP AROUND SIDES
- 8 TWO STACKED VALVE BOXES, LOWER ONE UPSIDE DOWN (CLAMSHELL) BOLTED TOGETHER. SEE VALVE BOX INSTALLATION DETAIL FOR SIZE
- 9 COIL 30" SPARE CONTROL WIRE IN VALVE BOX
- 10 FINISH GRADE IN LAWN AREAS
- 11 KEEP VALVE BOX 2" ABOVE MULCH IN PLANTING BED
- 12 OFF SET VALVE BOX TO ALLOW HANDLE TO SWING IN THE CLOSED POSITION



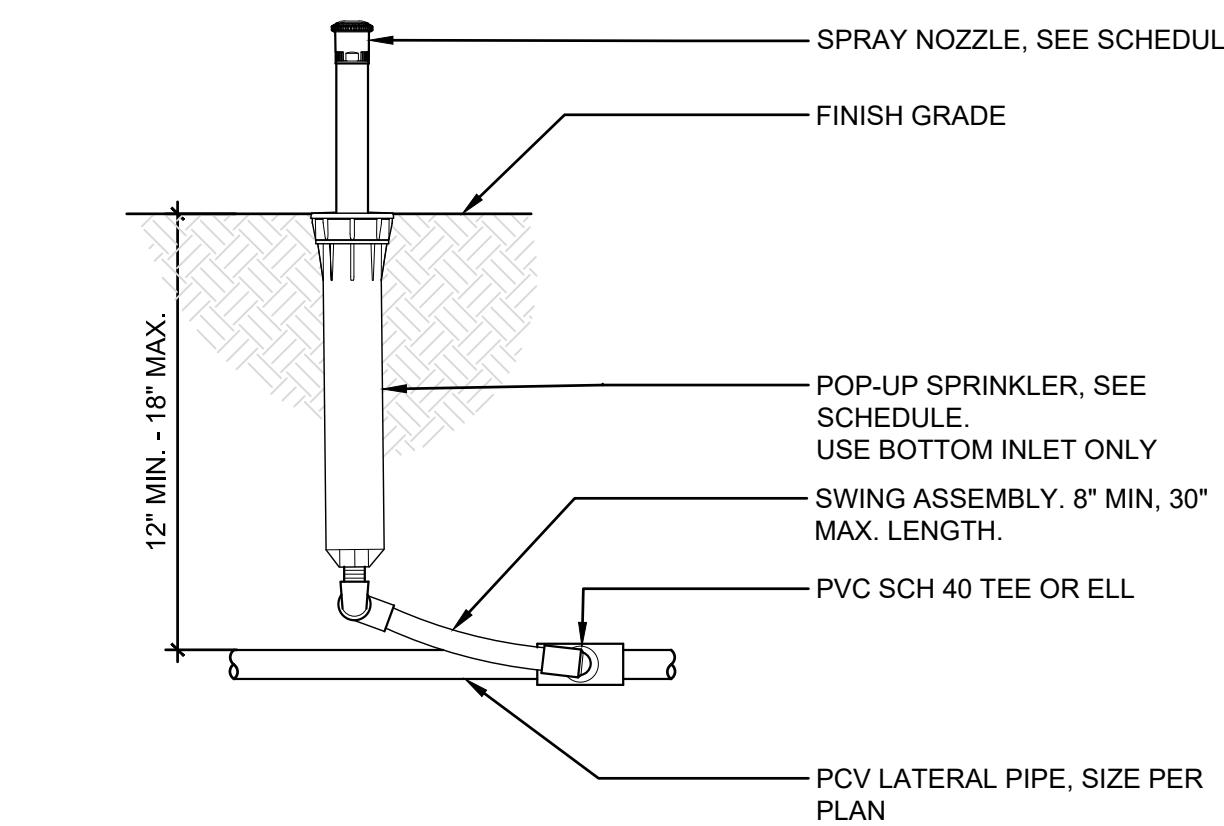
**NOTES:**

1. USE VALVE BOX W EXTENSIONS. SET 2" ABOVE GRADE IN SHRUBS, FLUSH IN TURF
2. USE TEFLON TAPE FOR ALL THREADED FITTINGS, NO PIPE DOPE
3. KEEP MIN. 3" CLEARANCE AROUND VALVE ON ALL SIDES.
4. LEAVE EXTRA 30" CONTROL WIRE COILED INSIDE VALVE BOX
5. USE DBR WATERPROOF CONNECTORS

**6 REMOTE CONTROL VALVE**

1 1/2" = 1'-0"

P-2023-PAC-06



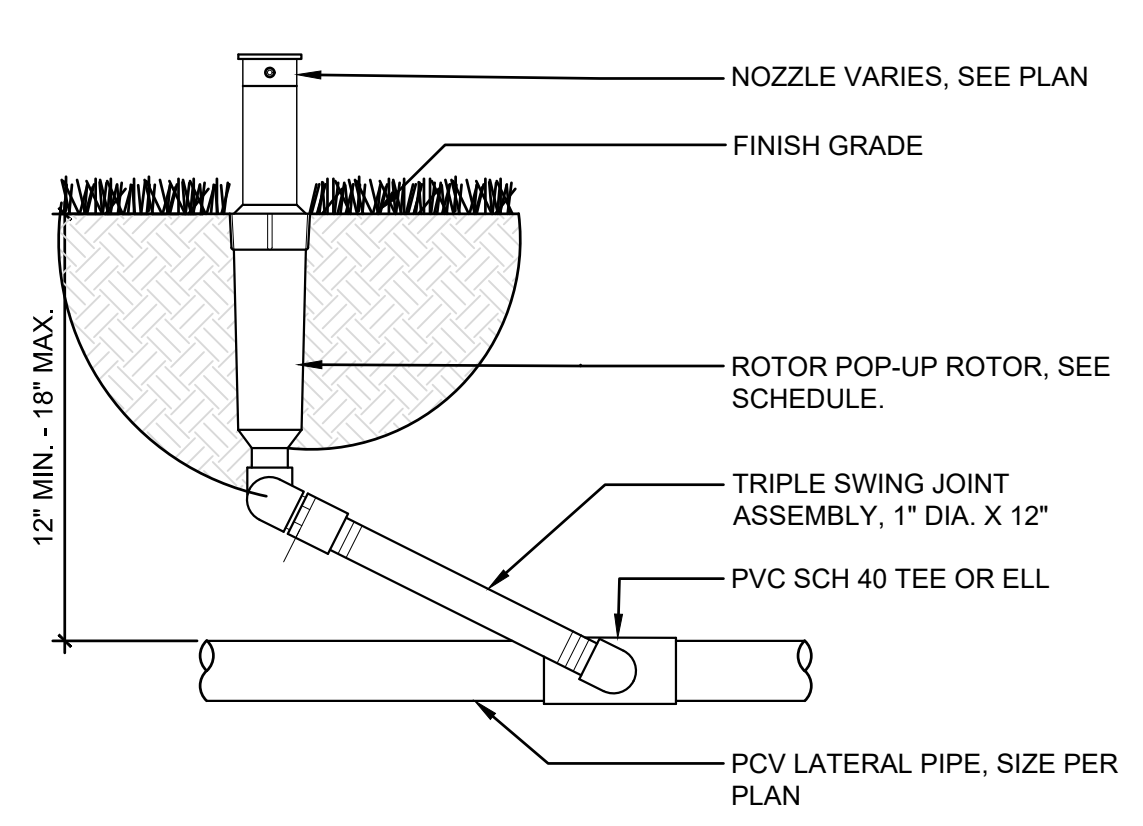
**NOTE:**

1. SET HEADS PLUMB OR SQUARE TO THE SLOPE
2. PLACE HEADS MIN 4" FROM EDGE OF PAVING
3. USE TEFLON TAPE AT ALL THREADED FITTINGS

**7 POP-UP SPRAY OR ROTATOR HEAD**

1/8" = 1'-0"

P-2023-PAC-16



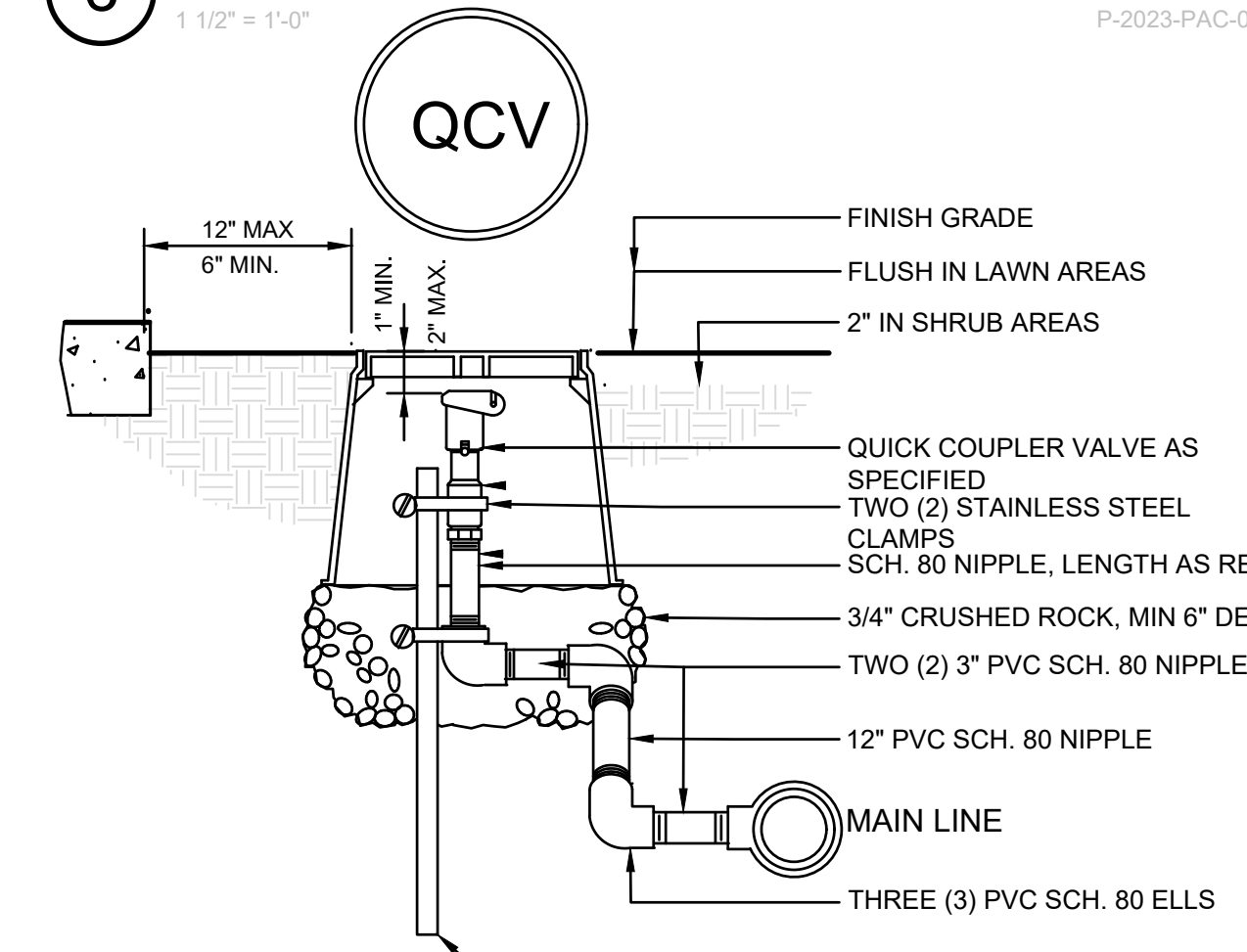
**NOTE:**

1. SET HEADS PLUMB OR SQUARE TO THE SLOPE
2. PLACE HEADS MIN 4" FROM EDGE OF PAVING
3. USE TEFLON TAPE AT ALL THREADED FITTINGS

**8 POP-UP ROTOR HEAD**

1/8" = 1'-0"

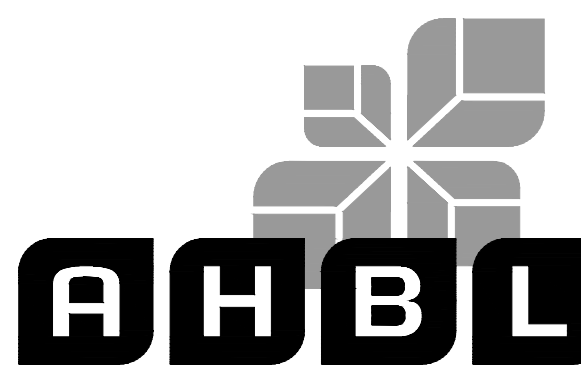
P-2023-PAC-17



**9 QUICK COUPLER VALVE**

1 1/2" = 1'-0"

P-2023-PAC-15



TACOMA · SEATTLE · SPOKANE · TRI-CITIES

2215 North 30th Street, Suite 300, Tacoma, WA 98403  
253.383.2422 TEL 253.383.2572 FAX www.ahbl.com WEB

Project Title:

**COASTAL PACIFIC FOOD DISTRIBUTION PUYALLUP**

Client:

1942 NORTHWOOD DRIVE SALISBURY, MARYLAND 21801

MATT SMITH

Project No.

2230491.40

Issue Set & Date:

**ISSUE FOR PERMIT (REVISION A)**

05/15/2024



**NOTICE**  
ALTERATION OF THIS DOCUMENT SHALL INVALIDATE THE PROFESSIONAL SEAL AND SIGNATURE. PUBLICATION OF THIS DOCUMENT DOES NOT CONSTITUTE PROFESSIONAL LIABILITY INSURANCE. THIS DOCUMENT IS THE PROPERTY OF AHBL AND IS NOT TO BE USED FOR OTHER PROJECTS OR ADDED TO THAT PROJECT OR FOR ANY OTHER PROJECT.

Revisions:

Sheet Title:

**IRRIGATION DETAILS**

Designed by: MAM/AG Drawn by: MAM/AG Checked by: CS

Sheet No.

**L4.01**

12 of 12 Sheets



Know what's below. Call before you dig.