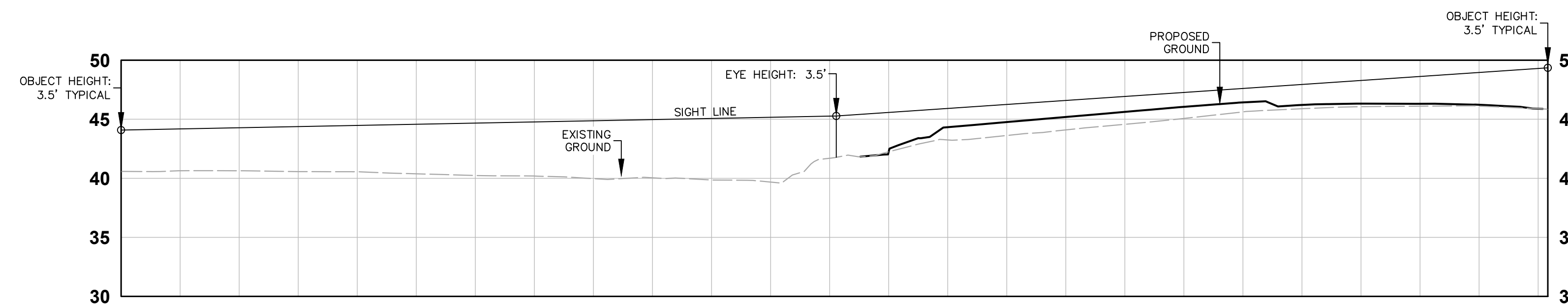


PLAN VIEW
SCALE: 1" = 40'



PROFILE VIEW
H: 1" = 40'
V: 1" = 8'

100% CD SET

REV.	ISSUED FOR	DATE



PLAN NORTH



TRUE NORTH

SCALE: 1"=40'



PSE - OPERATIONAL TRAINING CENTER

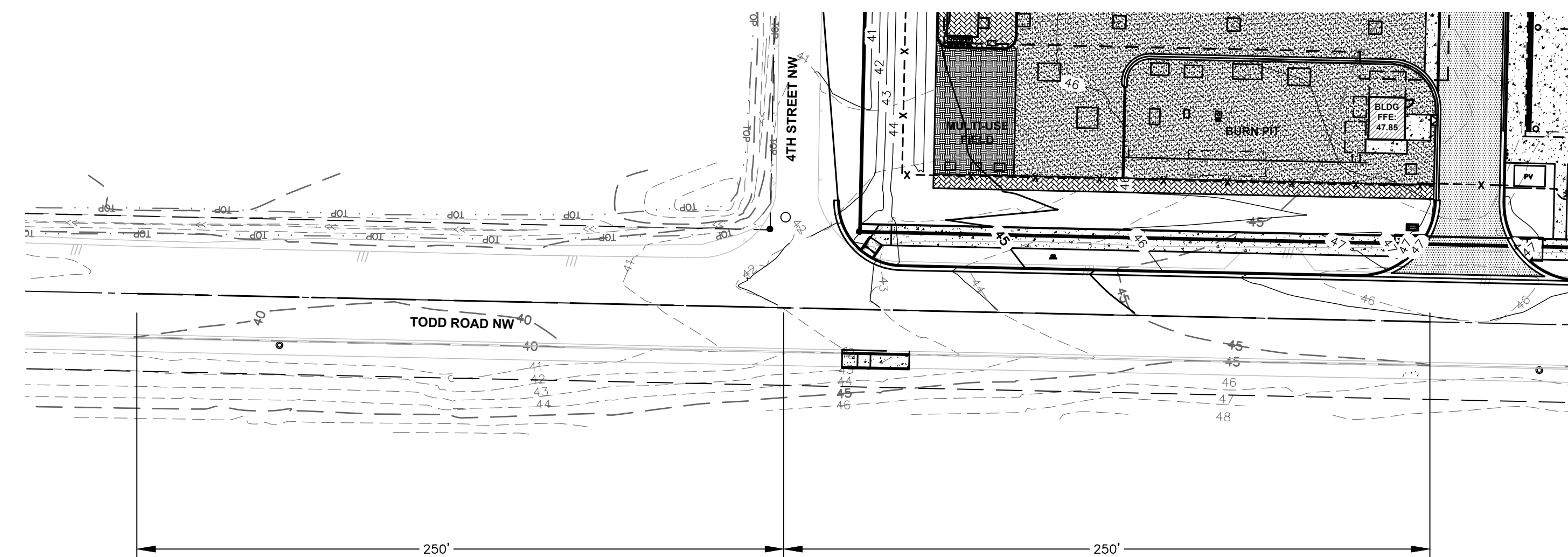
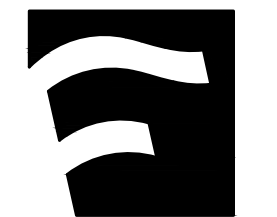
ENTERING SIGHT DISTANCE TODD+4th

PROJECT No:	22219
DRAWN BY:	MPM
CHECKED BY:	THF
DATE ISSUED:	03/04/2024

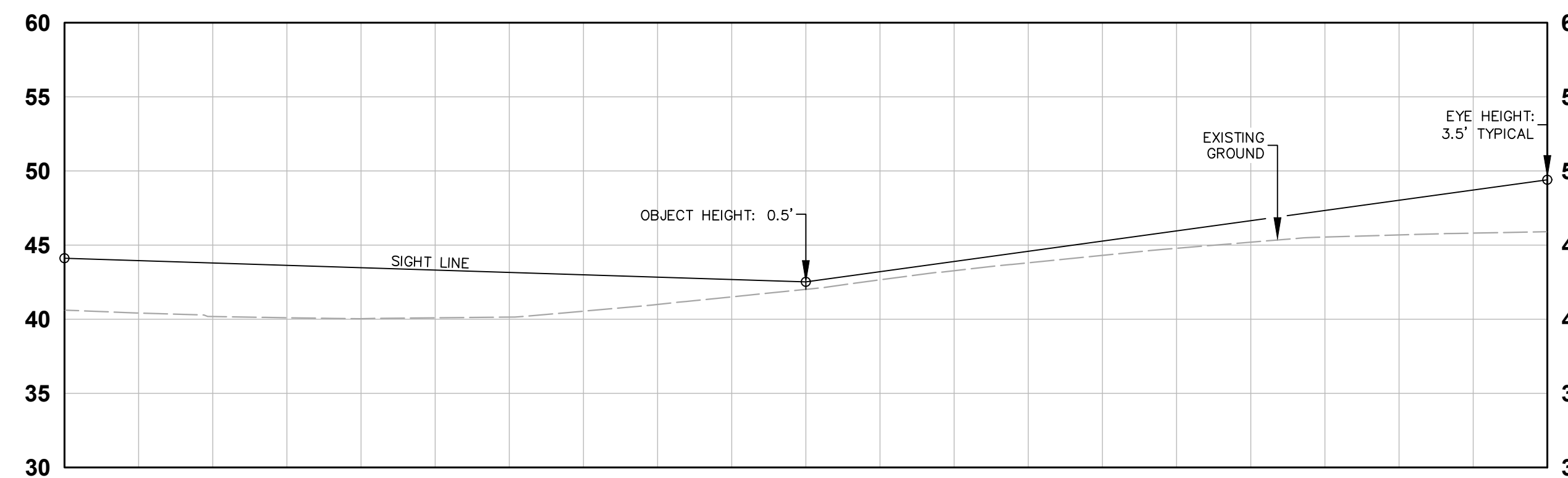
EXH (9)

ENTERING SIGHT DISTANCE
ROADWAY CLASSIFICATION = RESIDENTIAL STREET
DRIVER'S EYE HEIGHT = 3.5'
APPROACHING VEHICLE HEIGHT = 3.5'
DISTANCE FROM TRAVELED WAY = 18'
POSTED SPEED = 25 MPH
DESIGN SPEED = 35 MPH
ENTERING SIGHT DISTANCE = 300'

REFERENCE CITY OF PUYALLUP STANDARDS FOR ROADWAY GEOMETRIC DESIGN CRITERIA TABLE 100-2



PLAN VIEW
SCALE: 1" = 40'



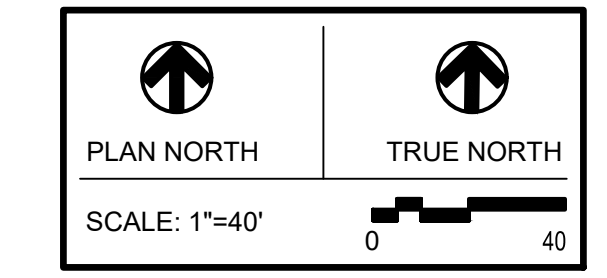
PROFILE VIEW
H: 1" = 40'
V: 1" = 8'

STOPPING SIGHT DISTANCE
VEHICLE TYPE = PASSENGER CAR
DRIVER'S EYE HEIGHT = 3.5'
OBJECT HEIGHT = 0.5' PER CITY OF PUYALLUP STANDARDS
POSTED SPEED = 25 MPH
DESIGN SPEED = 35 MPH
SSD = 250'

REFERENCE CITY OF PUYALLUP STANDARDS FOR ROADWAY
GEOMETRIC DESIGN CRITERIA TABLE 100-2

100% CD SET

REV.	ISSUED FOR	DATE



PSE - OPERATIONAL TRAINING CENTER

STOPPING SIGHT DISTANCE TODD+4th

PROJECT No:	22219
DRAWN BY:	MPM
CHECKED BY:	THF
DATE ISSUED:	03/04/2024

EXH (10)