

City of Puyallup Development & Permitting Services ISSUED PERMIT
Building Planning
Engineering Public Works
Fire Traffic

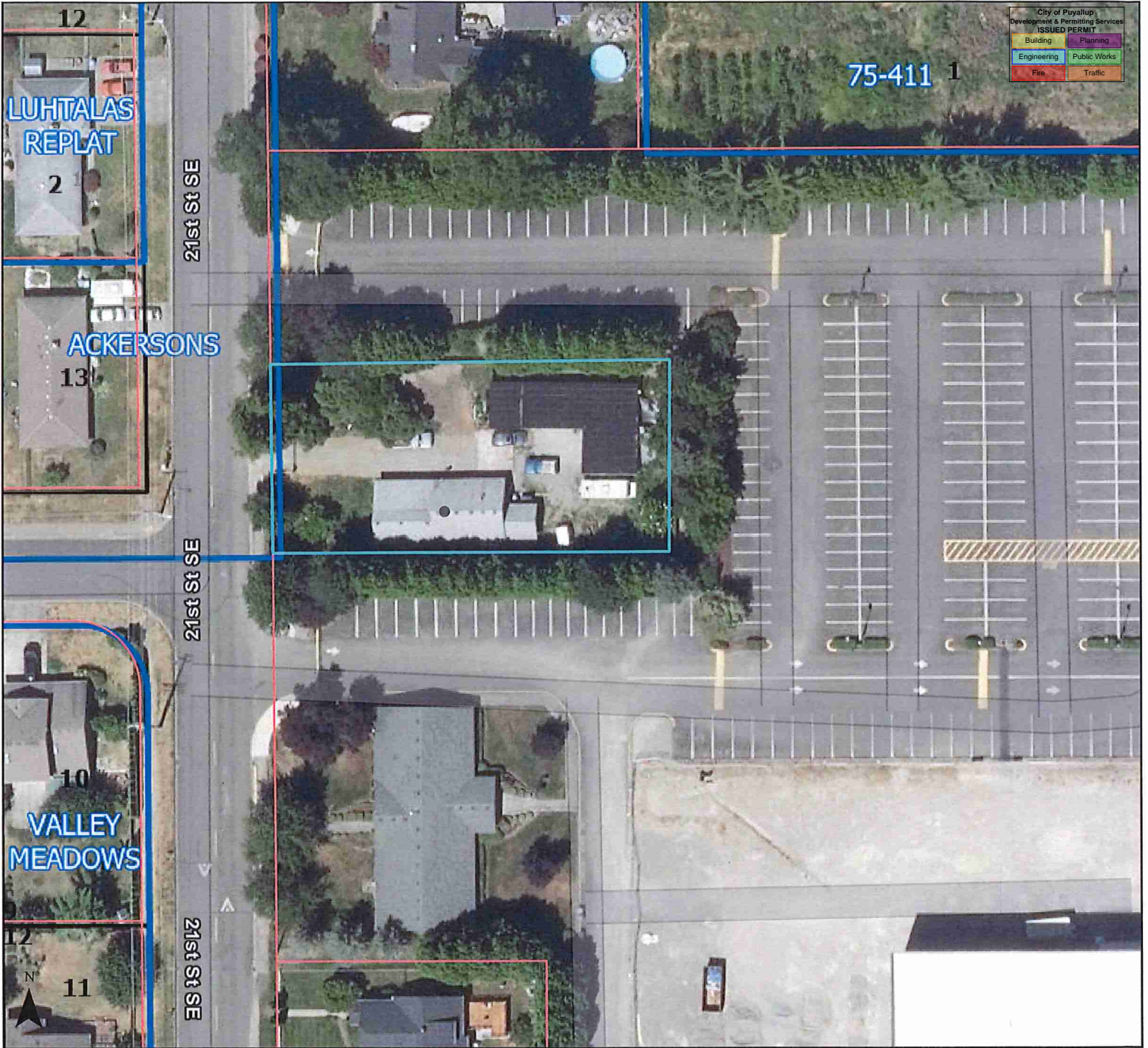
City of Puyallup Development Engineering APPROVED
See permit conditions.
AHunt
07/25/2024
10:06:48 AM

City of Puyallup Building REVIEWED FOR COMPLIANCE
SKInnear
07/12/2024
2:27:34 PM

Ensure site is clear of all hazards and debris prior to scheduling Final inspection.
A Demolition Permit is required through the Puget Sound Clean Air Agency to remove or demolish areas that may have asbestos
https://pscleanair.gov/ | 206-343-8800
All existing plumbing lines must be properly capped or re-routed.
Schedule inspections prior to covering or concealing.

Legend: Tax Parcels (Base Parcel, SimCon First Division, Simultaneous Conveyance, Puyallup City Limits), Plats and Short Plats (Plat), ConveyanceType (Plat). APPROVED PLAN CITY OF PUYALLUP PLANNING DIVISION. APPROVED BY: kbaker. DATE: 07/19/2024. CASE NO.: CONDITIONS:

Scale: 1:564. Map produced using City of Puyallup GIS web apps. Date: 7/9/2024. The printed information was derived from digital databases within the City of Puyallup GIS Portal. The City of Puyallup cannot accept responsibility for any errors, omissions, or positional accuracy, and therefore, there are no warranties which accompany this product.



Legend

Tax Parcels

Base Parcel

SimCon Second Division

SimCon First Division

Plats and Short Plats

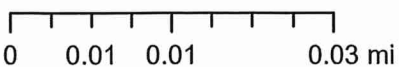
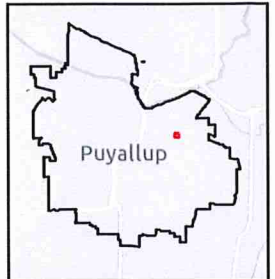
ConveyanceType

Plat

Short Plat

Simultaneous Conveyance

Puyallup City Limits



Scale: 1:1,128

Map produced using City of Puyallup GIS web apps.

Date: 7/9/2024

The printed information was derived from digital databases within the City of Puyallup GIS Portal. The City of Puyallup cannot accept responsibility for any errors, omissions, or positional accuracy, and therefore, there are no warranties which accompany this product. Users of this information should review or consult the primary data and information sources to ascertain the usability of the information.

