

RING	ITEM	BOM	QTY	PART NO.	DESCRIPTION	WEIGHT	PAINT
-	A 62		0				N
-	A 63		0				N
-	A 64		0				N
-	A 65		0				N
1	A 66		1	111810-10006801A	10 GA x 58" SP STV x 96 1/2" w/1 STR PCH W/ 1/2" DIA. FULL FL CPL OPNG		E/ET
1	A 67		1	111810-10006801B	10 GA x 58" SP STV x 96 1/2" w/1 STR PCH W/10" DIA. NZL OPNG		E/ET
1	A 68		1	111810-10006801C	10 GA x 58" SP STV x 96 1/2" w/1 STR PCH W/8" DIA. NZL OPNG		E/ET
1	A 69		2	111810-10006801D	10 GA x 58" SP STV x 96 1/2" w/1 STR PCH W/8" DIA. NZL OPNG		E/ET
1	A 70		1	111810-10006801E	10 GA x 58" SP STV x 96 1/2" w/1 STR PCH W/10" DIA. HALF FL CPL OPNG		E/ET
1	A 71		1	111810-10006801F	10 GA x 58" SP STV x 96 1/2" w/1 STR PCH W/10" DIA. SUCTION NZL OPNG		E/ET
1	A 72		1	111810-10006801G	10 GA x 58" SP STV x 96 1/2" w/1 STR PCH W/1 1/2" DIA. HALF FL CPL OPNG		E/ET
-	A 73		0				N
3	A 74		1	105812-10006801J	12 GA x 58" SP STV x 70 1/2" W/1 1/2" DIA. HALF FL CPL OPNG		E/ET
2	A 75		1	111810-10006801K	10 GA x 58" SP STV x 96 1/2" W/12" DIA. C-FLOW OPNG		E/ET
-	A 76		1	7048100F0080	WDMT NZL EXTR FFLSLIP ON CS 10"X8"X150#		(SUCTION) ET
-	A 77		2	8714BPW100HW	8" - 10" DIA DOUBLE NOZZLE EPDM KIT		[DRAIN] N
-	A 78		1	723810-10006801A	10" DIA INTERIOR ANTI-VORTEX W/ 29" CENTERLINE		(SUCTION) E
-	A 79		0				N
-	A 80		2	781-140871	INDEECO HEATER 15 KW		(HEATER) N
-	A 81		2	8704INDEECO-HW	INDEECO HEATER HW KIT		(HEATER) N
-	A 82		2	6848HTRSTND-D	HEATER STAND SUPPORT ADJUSTABLE (TOP SECTION)		(HEATER) E
-	A 83		2	6848HTRSTND-C	HEATER STAND SUPPORT ADJUSTABLE (BOTTOM SECTION)		(HEATER) E
-	A 84		12	775G00812	BOLT 1/2" X 1 1/4" LG SQ HD HDG GR5		(HEATER) N
-	A 85		12	791M04125	WASHER 1/2" SAE FLAT MG		(HEATER) N
-	A 86		12	279856-004	NUT 1/2" HEX HDG GR5		(HEATER) N
-	A 87		2	704806000080-P	WDMT NZL EXTR RF SLIP ON CS 6"X8"X150# (PAINTED)		(HEATER) ET
-	A 88		2	8704BPW060HW	6" DIA. SINGLE NOZZLE EPDM KIT		(HEATER) N
-	A 89		2	708806010	6" DIA BLIND RF FLANGE		(HEATER) ET
-	A 90		2	87088GW060HW	6" DIA SINGLE FLANGE HARDWARE EPDM KIT		(HEATER) N
-	A 91		0				N
-	A 92		1	7048080F0080-P	WDMT NZL EXTR FFLSLIP ON CS 8"X8"X150# (PAINTED)		[DRAIN] ET
-	A 93		1	322802913-P	8" DIA BACKING PLATE 1/4" PLT X 14 3/4" DIA. W/ 8 11/16" I.D. HOLE (PAINTED)		[DRAIN] E
-	A 94		1	70880801F	8" DIA BLIND FF FLANGE		[DRAIN] ET
-	A 95		1	87088GW080HW	8" DIA SINGLE FLANGE HARDWARE EPDM KIT		[DRAIN] N

REFERENCE DRAWINGS	
HYDROTEC CS TANK CONSTRUCTION GUIDE	282245-000 (*)
ELEVATION VIEW, BOTTOM PLAN & BOM	929T022-100068001A (*)
STRUCTURE & DECK PLAN - CENTER COLUMN SUPPORTED	929T022-100068001B (*)
TANK STRETCH-OUT	929T022-100068001C (*)
TANK HARDWARE	929T022-100068001D (*)
ACCESSORIES DETAILS	929T022-100068001E (*)
EXT LDR ASSY STD 22'	1008754 (*)
1:12 DECK 22" TANK HEIGHT - 3M CABLE FALL PROTECTION DECK 1:12	1010514 (*)
FREE FLOWING VENT ASSEMBLY - HDG SCREEN 84% OPEN AREA	1002680 (*)
30" SQUARE ROOF HATCH INSTALLATION PRINT	35630 (*)
LIQUID LEVEL INDICATOR FULL TRAVEL INSTALLATION PRINT	715C00 (*)
GUARDRAIL OPENING INSTALLATION PRINT	878G000-99 (*)
LOCKABLE HOOP ASSEMBLY INSTALLATION PRINT	1008436 (*)
GUARDRAIL - 10" EACH SIDE OF LADDER W/ TOE BOARD (GALV)	8-50-29-9504-02 (*)
KIT, SHIMS, BLK, 29" DIA CS	SHIMS-CS-29-B (*)
HEATER STAND INSTALLATION PRINT AND BILL OF MATERIAL	1002686 (*)

RING	ITEM	BOM	QTY	PART NO.	DESCRIPTION	WEIGHT	PAINT
-	A 1		17	201812029	STD. 12 GA DECK SHEET		E/ET
-	A 2		2	201812729	12 GA DECK SHEET W/30" SQ. MANWAY OPNG		E/ET
-	A 3		2	356810300	30" DECK MW CVR 10GA		E/ET
-	A 4		2	356810304	30" DECK MW FLG BK ASSY 10GA		E/ET
-	A 5		2	83568PW030PHW	DECK MANWAY - 30" SQ.HARDWARE KIT		N
-	A 6		1	50-80-0306-10	20" VENT CAP LARGE SPUN 16GA ALUM		N
-	A 7		1	35380001H	HDW KIT, 20" DIA. VENT, HDG SCREEN 84% OPEN AREA		N
-	A 8		1	350810005-P	DM NK 10GA 28/30 W/NP 20IN ID, (PAINTED)		E/ET
-	A 9		1	201812529	12 GA DECK SHEET W/ LIQUID LEVEL IND. OPNG		E/ET
-	A 10		1	715C00122	FULL TRAVEL LIQUID LEVEL INDICATOR 22" HIGH TANK		N
-	A 11		0				N
-	A 12		0				N
-	A 13		2	351812029	DECK COVER PLATE		E/ET
-	A 14		0				N
-	A 15		20	378805004	RAFTER HANGER- 3/16" PL. 4 SLOT		E
-	A 16		20	401804170	RAFTER- C4" x 5.4 x 14'-2"		E
-	A 17		0				N
-	A 18		1	605806-10006801A	COLUMN TOP SECTION - 6" DIA. SCH 40 PIPE X 226"		E
-	A 19		1	60280600047A	COLUMN BOTTOM SECTION - 6" DIA. SCH 40 PIPE X 47 5/16"		E
-	A 20		0				N
1	A 21		10	11181012901	10 GA x 58" SP STV x 96 1/2" w/1 STR PCH		E/ET
2	A 22		19	11181012900	10 GA x 58" SP STV x 96 1/2"		E/ET
3	A 23		19	1058121290068	12 GA x 58" SP STV x 70 1/2"		E/ET
-	A 24		0				N
1	A 25		2	11181012901K	10 GA x 58" SP STV x 96 1/2" w/1 STR PCH W/30" DIA SHELL MW OPNG		E/ET
-	A 26		2	367806004PS	3/8" X 39" OD MANWAY COVER		E/ET
-	A 27		2	367806-10006801A	30" DIA. SHELL MANWAY FRAME 2RV GR50		E/ET
-	A 28		2	83678PW064HW	30" DIA. SHELL MANWAY HARDWARE KIT		N
-	A 29		0				N
-	A 30		2	330810329	10 GA BOTTOM CENTER PLATE		E
-	A 31		1	351810002	10 GA BOTTOM CENTER COVER (30 HL)		E
-	A 32		20	226812029	12 GA FLAT BOTTOM SHEET		E
-	A 33		0				N
-	A 34		20	81000757-407	ANCHOR HDW KIT - 7/8" X 27" LG F1554 GR36		N
-	A 35		20	87788PW-HW	ANCHOR BOLT SADDLE HDW KIT 8HL PC EPDM		N
-	A 36		20	50-80-0109-20G	ANCHOR CLIP FOR 7/8" DIA.		Z
-	A 37		20	50-80-0112-97G	AB SADDLE BHL LIQUID (HDG)		Z
-	A 38		1	SHIMS-CS-29-B	KIT, SHIMS, BLK, 29" DIA CS		N
-	A 39		84	795ASPEXCT48	ASPHALT IMPREGNATED FIBERBOARD 5'-0" X 48"		N
-	A 40		1	7885300L	LIQUID TANK - NAMEPLATE (7885SL-10006801A)		N
-	A 41		0				N
-	A 42		1	10-00-0000-50	CST STORAGE LOGO		N
-	A 43		0				N
-	LG 44		1	1008754-000	EXT LDR ASSY STD 22'		Z
-	LG 45		1	1010514-000	1:12 DECK 22" TANK HEIGHT - 3M CABLE FALL PROTECTION DECK 1:12		Z
-	LG 46		1	1008436-000KIT	LOCKABLE HOOP ASSEMBLY		Z
-	LG 47		1	1010568-000	SWING GATE, 22" X 24" - FABENCO Z70-24		N
-	LG 48		1	50-00-0000-99	GUARDRAIL OPNG KIT		Z
-	LG 49		1	150-29-9504-02	GUARDRAIL - 10" EACH SIDE OF LADDER W/ TOE BOARD (GALV)		Z
-	A 50		0				N
-	A 51		2	730-5054-P3-FM	PROCAP BINMASTER		[PROCAP BINMASTER] N
-	A 52		2	734801401	1 1/2" HALF COUPLING		[PROCAP BINMASTER] ET
-	A 53		2	87348PW020HW	2 1/4" - 2" DIA. HALF COUPLING EPDM KIT		[PROCAP BINMASTER] N
-	A 54		0				N
-	A 55		1	99-00-0816-65	POTTER TTS SWITCH		[POTTER TTS SWITCH] N
-	A 56		1	734801001	1" HALF COUPLING		[POTTER TTS SWITCH] ET
-	A 57		2	87348PW010HW	1/4" - 1" DIA. NOZZLE EPDM KIT		[SAMPLE TAP][POTTER TTS SWITCH] N
-	A 58		0				N
-	A 59		1	734800402	1 1/2" FULL COUPLING		[SAMPLE TAP] ET
-	A 60		1	71680500-208505A	1/2" DIA. SAMPLE TAP (BRASS) NON-THREADED		[SAMPLE TAP] N
-	A 61		0				N

Approval of submitted plans is not an approval of omissions or oversights by this office or non compliance with any applicable regulations of local government. The contractor is responsible for making sure that the building complies with all applicable codes and regulations of the local government.

The approved construction plans, documents, and all engineering must be posted on the job at all inspections in a visible and readily accessible location.

Full sized legible color plans are required to be provided by the permittee on site for inspection.

- NOTES:**
- THIS BILL OF MATERIAL IS FOR ONE COMPLETE TANK.
 - DRAWINGS REQUIRED FOR FIELD USE.
 - INTERIOR AND BOTH SIDES OF BOTTOM PAINTED ONE COAT TRICO THERMOSET CORROSION RESISTANT POWDER EPOXY BOND EP @ (7 MILS AVERAGE, DFT). EXTERIOR PAINTED ONE COAT OF TRICO THERMOSET CORROSION RESISTANT POWDER EPOXY BOND EP @ WITH FINISH COAT OF FOREST GREEN (#V01726-110) PERFORMANCE URETHANE (4.5 MILS AVERAGE, DFT).
 - FIRE PROTECTION WATER STORAGE TANK DESIGNED IN ACCORDANCE WITH IBC 2018/2021, ANWA D103-19 & NFPA 22 2023 SPEC. SS = 127.00%, S1 = 43.70%, RISK CAT. SEISMIC = 4. SITE CLASS = D4H, SEISMIC DESIGN CATEGORY = D. IMPORTANCE FACTOR IE = 1.50, TL = 6.00, 120 MPH WINDLOAD PER IBC, RISK CATEGORY = 4. EXP = C, 25 PSF LIVE DECK LOAD, SPECIFIC GRAVITY = 1.00.
 - STANDARD CENTER DOME WITH VENT WILL RELIEVE 24 CFS (11,000 GPM). ADDITIONAL VENTING TO PREVENT A VACUUM GREATER THAN 0.4 OZ PER SQUARE INCH IS THE RESPONSIBILITY OF THE OWNER.
 - FIBERBOARD SHALL BE INSTALLED IN ACCORDANCE WITH ANWA D103.
 - ALL BOLTED CONNECTIONS ARE BEARING CONNECTIONS. FOR CST MINIMUM AND MAXIMUM TORQUE VALUES FOR WATER-TIGHTNESS, REFERENCE CST ERECTION MANUAL. FOR CONNECTIONS NOT ADDRESSED IN THE CST ERECTION MANUAL, USE THE TURN-OF-THE-NUT METHOD.

City of Puyallup Building Reviewed for Compliance
 BSnowden
 09/13/2024
 8:31:58 AM

City of Puyallup Development & Permitting Services ISSUED PERMIT

Building	Planning
Engineering	Public Works
Fire	Traffic

JUL 09 2024

CST STORAGE

903 E 104TH ST, SUITE #900
 KANSAS CITY, MISSOURI 64131

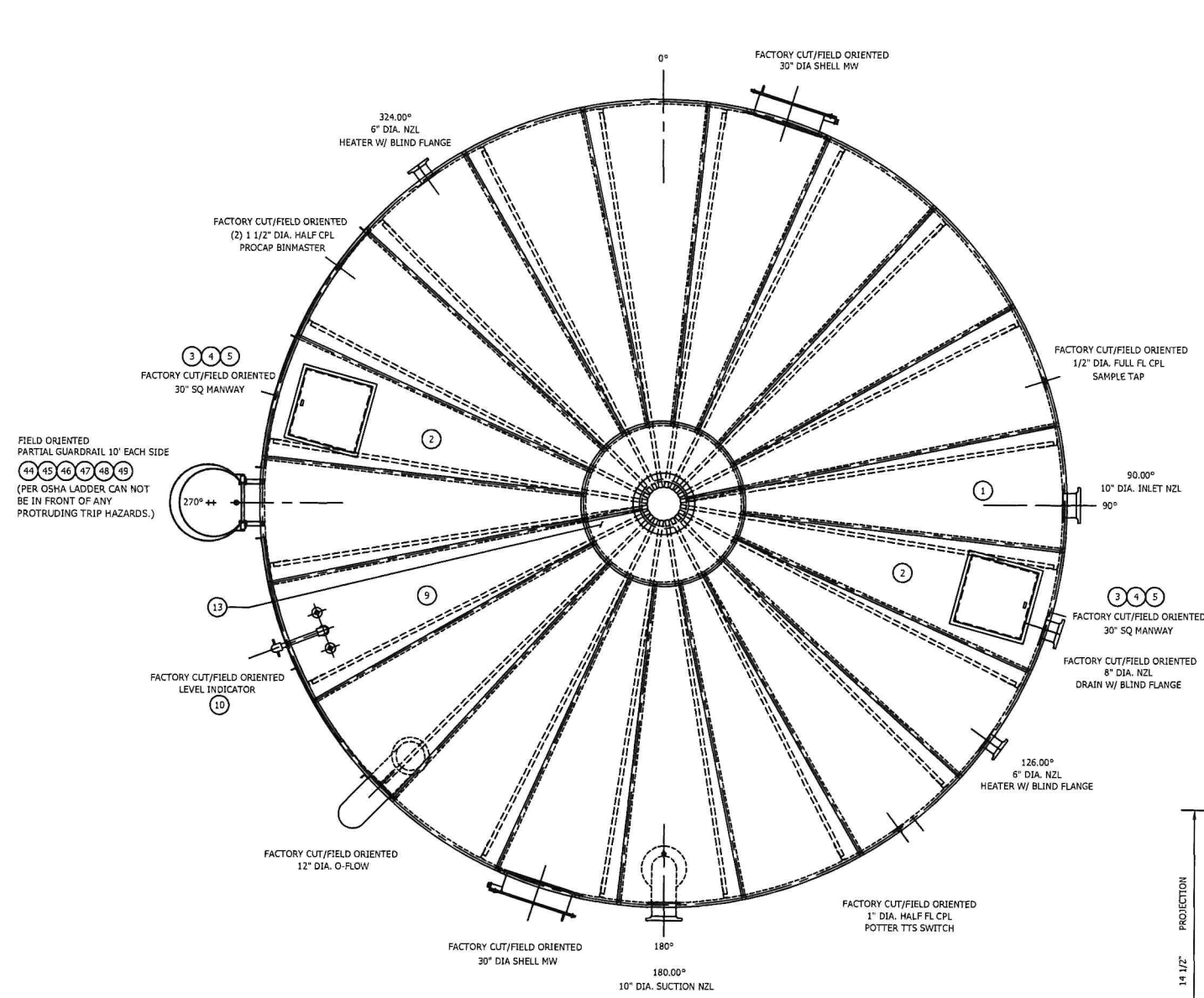
REVISION DESCRIPTION

NO.	BY	CHKD.	DATE	DESCRIPTION
1	AMT	AMT	06/14/24	REVISED PER ECO-30068001-02
2	AMT	AMT	07/02/2024	REVISED PER ECO-30068001-03

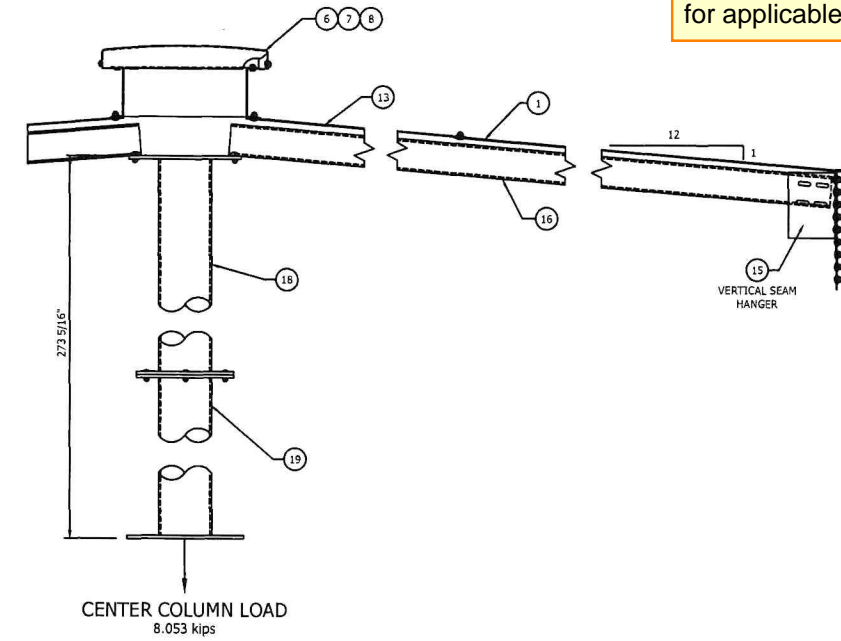
ELEVATION, BOTTOM PLAN AND BOM
 29'-8 1/2" DIA. x 22' HIGH TANK
 COASTAL PACIFIC FOOD DISTRIBUTORS
 PUYALLUP, WA, US

100068001A

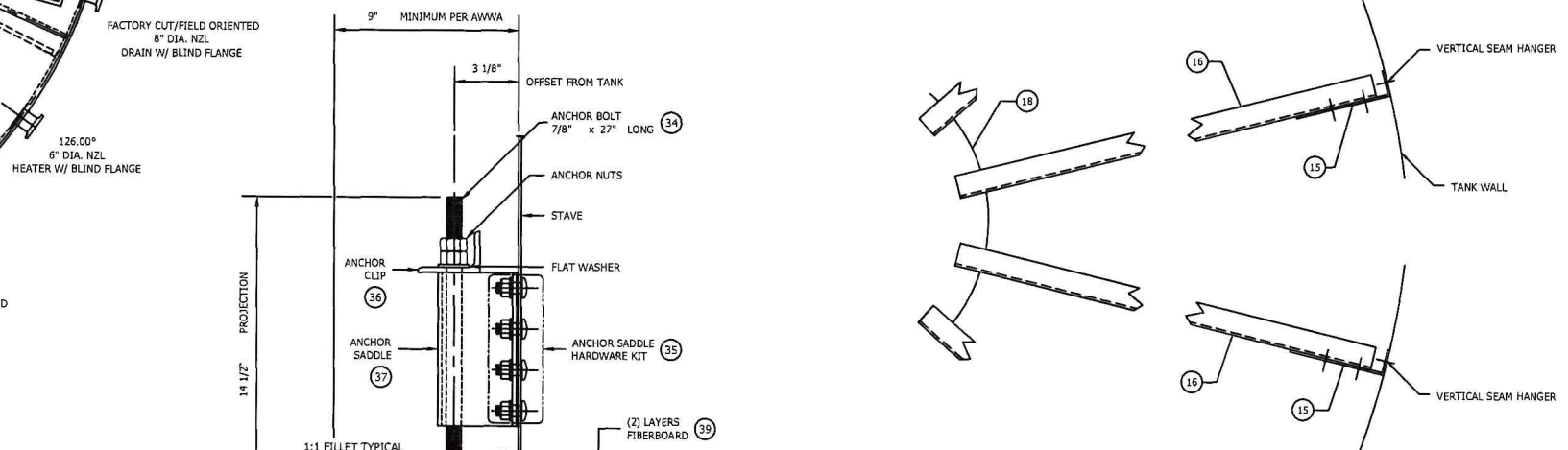
Reference originally Approved drawings for applicable notes and details.



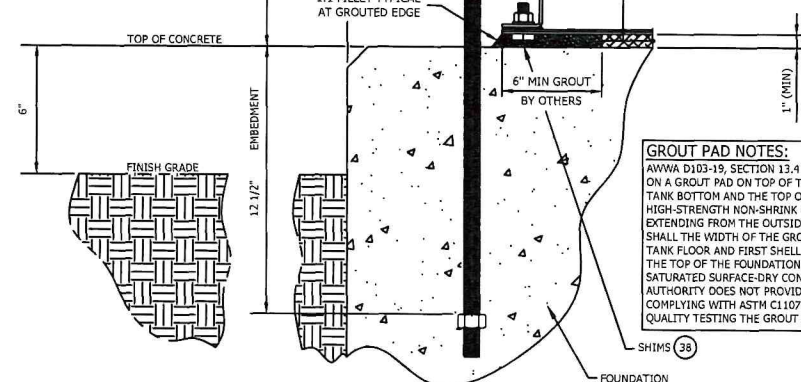
DECK PLAN
SEE STRETCH-OUT FOR DECK SHEET LOCATION.



RAFTER SECTIONAL VIEW



PARTIAL RAFTER PLAN VIEW



CAST-IN-PLACE ANCHOR DETAIL

GROUT PAD NOTES:
AWWA D103-19, SECTION 13.4 REQUIRES THE TANK SHELL AND A PORTION OF THE TANK BOTTOM BE SUPPORTED ON A GROUT PAD ON TOP OF THE CONCRETE FOUNDATION. A 1 INCH (25mm) MINIMUM SPACE BETWEEN THE TANK BOTTOM AND THE TOP OF THE CONCRETE FOUNDATION (RINGWALL OR SLAB) SHALL BE FILLED WITH A HIGH-STRENGTH NON-SHRINK GROUT. THE GROUT SHALL FILL THE ENTIRE SPACE BENEATH THE TANK, EXTENDING FROM THE OUTSIDE EDGE OF THE TANK BOTTOM INWARD TO THE FLOOR CUSHION. IN NO CASE SHALL THE WIDTH OF THE GROUT PLACED UNDER THE TANK BOTTOM BE LESS THAN 6 INCHES (150mm) WIDE. TANK FLOOR AND FIRST SHELL RING ASSEMBLY SHALL BE SHIPPED TO A MINIMUM OF 1 INCH (25mm) GAP OVER THE TOP OF THE FOUNDATION. THE TOP OF THE FOUNDATION SHALL BE CLEANED AND THOROUGHLY WETTED TO SATURATED SURFACE-DRY CONDITION IMMEDIATELY PRIOR TO GROUT PLACEMENT. WHERE THE LOCAL AUTHORITY DOES NOT PROVIDE GROUT SPECIFICATIONS OR REQUIREMENTS, USE A HIGH STRENGTH GROUT COMPLYING WITH ASTM C1107, MINIMUM 28-DAY COMPRESSIVE STRENGTH OF 8,000 PSI. REQUIREMENTS FOR QUALITY TESTING THE GROUT ARE LEFT TO THE AUTHORITY HAVING JURISDICTION.



City of Puyallup
Development & Permitting Services
ISSUED PERMIT

Building	Planning
Engineering	Public Works
Fire	Traffic

CONFIDENTIAL/TRADE SECRETS: BY ACCEPTING POSSESSION OF THIS DOCUMENT, RECIPIENT AGREES THAT ITS CONTENTS ARE CONFIDENTIAL, PROPRIETARY, TRADE SECRETS OF CST STORAGE. NO PORTION OF THIS DOCUMENT MAY BE REPRODUCED, DISTRIBUTED, OR USED IN ANY MANNER WITHOUT WRITTEN PERMISSION FROM CST STORAGE.

CST STORAGE 803 E 104TH ST, SUITE #900 KANSAS CITY, MISSOURI 64131	2	UPDATED PER ECO-10008801-03 RELEASE TO FABRICATION	ND	NMT	ZKH	07/02/24	100068_001
	1	UPDATED PER ECO-10008801-03 REVISE AND RESUBMIT	ND	NMT	06/14/24	06/14/24	06/14/24
STRUCTURE & DECK PLAN - CENTER COLUMN SUPPORTED 29'-8 1/2" DIA. x 22' HIGH COASTAL PACIFIC FOOD DISTRIBUTERS PUYALLUP, WA, US SHEET NO. 100068_001 DATE: 5/27/2024 DRAWN BY: ZKH CHECKED BY: ZKH DATE: 7/02/2024 PROJECT: 929T022-100068001B SHEET: 2							

RING 1: 10 GA 1RV		
LOCATION	DESCRIPTION	QTY
VERTICAL SEAM BOLTS	1/2 X 1 1/4 FN PC HD HDG	960
VERTICAL SEAM NUTS	1/2 HEX NUT	960
VERTICAL SEAM WASHERS	1/2 NEOP BKD STEEL GALV	960
VERT SEAM STRIP GASKET	STRIP GSKT - 1 HOLE EPDM	174
CHIME BOLTS	1/2 X 1 1/4 SQ HD HDG GRS	520
CHIME LAP BOLTS	1/2 X 1 1/4 SQ HD HDG GRS	40
CHIME WASHER	1/2 FLAT STEEL GALV	520
CHIME NUTS	1/2 HEX NUT	560
CHIME STRIP GASKET	STRIP GSKT - 1 HOLE EPDM	97
CHIME LAP GASKET	GSKT CH/LAP LT EPDM	40
RADIUS GASKET	GSKT THN RAD EPDM 1RV	40
CHIME LAP BOLT WSH REC	1/2 NEOP BKD STEEL GALV	80

RING 2: 10 GA 1RV		
LOCATION	DESCRIPTION	QTY
VERTICAL SEAM BOLTS	1/2 X 1 1/4 FN PC HD HDG	960
VERTICAL SEAM NUTS	1/2 HEX NUT	960
VERTICAL SEAM WASHERS	1/2 NEOP BKD STEEL GALV	960
VERT SEAM STRIP GASKET	STRIP GSKT - 1 HOLE EPDM	174
CHIME BOLTS	1/2 X 1 1/4 SQ HD HDG GRS	520
CHIME LAP BOLTS	1/2 X 1 1/4 SQ HD HDG GRS	40
CHIME WASHER	1/2 FLAT STEEL GALV	520
CHIME NUTS	1/2 HEX NUT	560
CHIME STRIP GASKET	STRIP GSKT - 1 HOLE EPDM	97
CHIME LAP GASKET	GSKT CH/LAP LT EPDM	40
RADIUS GASKET	GSKT THN RAD EPDM 1RV	40
CHIME LAP BOLT WSH REC	1/2 NEOP BKD STEEL GALV	80

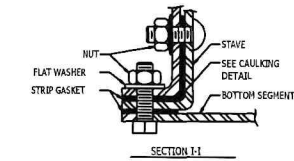
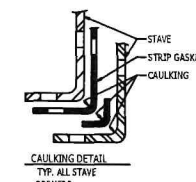
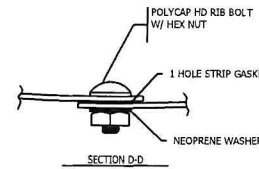
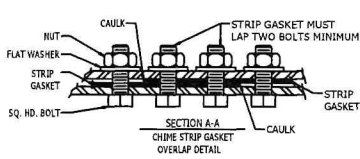
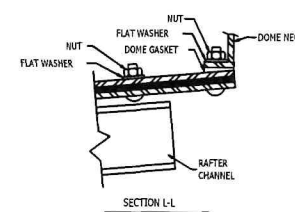
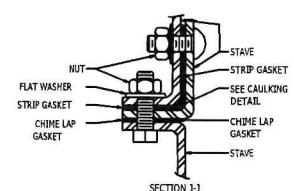
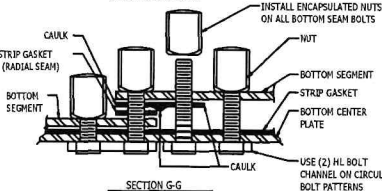
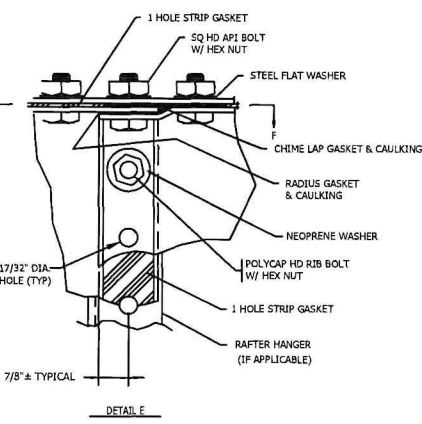
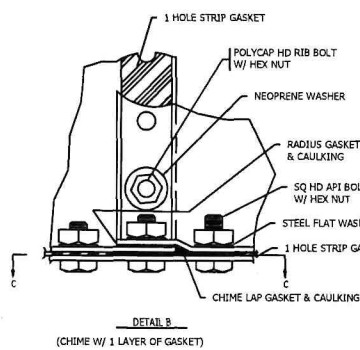
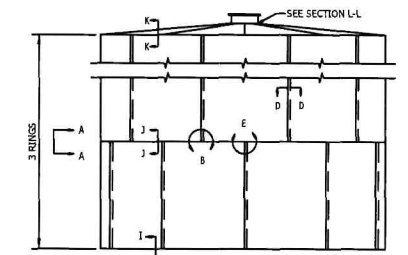
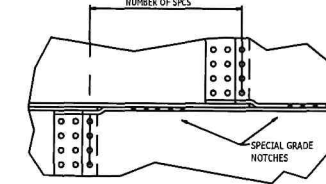
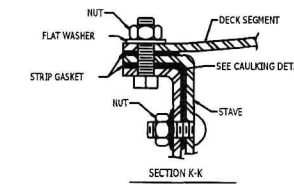
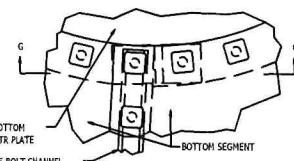
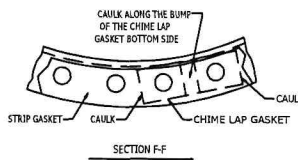
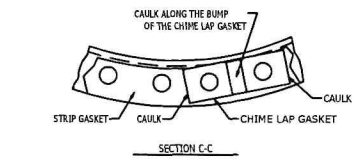
FLAT BOTTOM SECTION: 12 GA CENTER PLATE: 10 GA		
LOCATION	DESCRIPTION	QTY
CENTER PLATE BOLTS	1/2 X 1 SQ HD HDG GRS	28
CENTER PLATE LAP BOLTS	1/2 X 1 1/4 SQ HD HDG GRS	2
CENTER PLATE NUTS	1/2 ENCAP NUT	30
CEN PLATE BOLT CHANNEL	2 HL	15
CENTER PLATE GSKT	MANHOLE GASKET 30 HL	1
COVER PLATE BOLTS	1/2 X 1 SQ HD HDG GRS	78
COVER PLATE LAP BOLTS	1/2 X 1 1/4 SQ HD HDG GRS	22
COVER PLATE NUTS	1/2 ENCAP NUT	100
CVR PLATE BOLT CHANNEL	5 HL	20
COVER PL SEAM BOLTS	1/2 X 1 SQ HD HDG GRS	20
COVER PL SEAM NUTS	1/2 ENCAP NUT	20
COVER PL BOLT CHANNEL	10 HL	2
COVER PLATE STRIP GSKT	STRIP GSKT - 1 HOLE EPDM	23
RADIAL SEAM BOLTS	1/2 X 1 SQ HD HDG GRS	1440
RADIAL SEAM NUTS	1/2 ENCAP NUT	1440
RADIAL SEAM STRIP GSKT	STRIP GSKT - 1 HOLE EPDM	247
RADIAL SEAM BOLT CHAN	48 HL	20
RADIAL SEAM BOLT CHAN	24 HL	20
BOTTOM LAP GASKET	GSKT CH/LAP LT EPDM	24
BOTTOM CHIME STRIP GSKT	STRIP GSKT - 1 HOLE EPDM	96
BOTTOM CHIME LAP GSKT	GSKT CH/LAP LT EPDM	20
BOTTOM CHIME BOLT	1/2 X 1 SQ HD HDG GRS	520
BOTTOM CHIME LAP BOLT	1/2 X 1 1/4 SQ HD HDG GRS	40
BOTTOM CHIME NUT	1/2 HEX NUT	560
BOTTOM CHIME WASHER	1/2 FLAT STEEL GALV	560
BTM LAP BOLT WASHER	1/2 NEOP BKD STEEL GALV	80

DECK: 12 GA		
LOCATION	DESCRIPTION	QTY
CENTER DOME BOLTS	1/2 X 1 1/4 FN PC HD HDG	28
CENTER DOME LAP BOLTS	1/2 X 1 1/4 FN PC HD HDG	2
CENTER DOME WASHERS	1/2 FLAT STEEL GALV	30
CENTER DOME NUTS	1/2 HEX NUT	30
CENTER DOME GSKT	MANHOLE GASKET 30 HL	1
DECK COVER PL BOLTS	1/2 X 1 1/4 FN PC HD HDG	100
DECK COVER PL WASHERS	1/2 FLAT STEEL GALV	100
DECK COVER PL NUTS	1/2 HEX NUT	100
DECK COVER PL GSKT	STRIP GSKT - 1 HOLE EPDM	23
RADIAL SEAM BOLTS	1/2 X 1 1/4 FN PC HD HDG	1420
RADIAL SEAM WASHERS	1/2 FLAT STEEL GALV	1420
RADIAL SEAM NUTS	1/2 HEX NUT	1420
RADIAL SEAM STRIP GSKT	STRIP GSKT - 1 HOLE EPDM	243
TOTAL LAP GSKT	GSKT CH/LAP LT EPDM	44
DECK LAP BOLTS	1/2 X 1 1/4 FN PC HD HDG	22
DECK LAP WASHERS	1/2 FLAT STEEL GALV	22
DECK LAP NUTS	1/2 HEX NUT	22

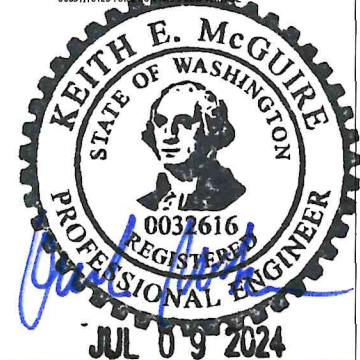
DECK SUPPORT - CENTER COLUMN SUPPORT		
LOCATION	DESCRIPTION	QTY
COLUMN SPICE BOLTS	BLT HH 1/2"X 1-1/2" SS304	8
ALL BEARING PL BOLTS	BLT HH 1/2"X 2" SS304	40
RAFTER TO HANGER BOLTS	BLT HH 1/2"X 1-1/4" SS304	20
INTERIOR FLAT WASHERS	1/2 FLAT 304 SS	68
INTERIOR NUTS	NUT HH 1/2" *WAXED* SS304	68

HARDWARE LIST FOR TANK - DOMESTIC OVRAGE						
RING	ITEM	BOM	QIS	PART NO.	QTY	DESCRIPTION
-	B	1	-	775G00810	3270	BOLT - 1/2 X 1 LG SQUARE HEAD HDG GRS
-	B	2	-	775G00812	775	BOLT - 1/2 X 1 1/4 LG SQUARE HEAD HDG GRS
-	B	3	-	777G00812	4368	BOLT - 1/2 X 1 1/4 LG FN POLYCAP HDG
-	B	4	-	772S00812	91	BLT HH 1/2"X 1-1/4" SS304
-	B	5	-	50-27-0304-02	9	BLT HH 1/2"X 1-1/2" SS304
-	B	6	-	50-27-0304-04	22	BLT HH 1/2"X 2" SS304
-	B	7	-	279856-004	6675	NUT - 1/2 HEX GALVANIZED
-	B	8	-	784NE0800	1688	NUT - 1/2 ENCAPSULATED
-	B	9	-	279856-002	120	NUT - 1/2 304SS HEX WAXED
-	B	10	-	791M04125	3877	WASHER - 1/2 FLAT STEEL GALVANIZED
-	B	11	-	790204000	3057	WASHER - 1/2 NEOPRENE BACKED GALVANIZED STEEL
-	B	12	-	791MR4200	52	WASHER - 1/2 RECESSED GALVANIZED STEEL
-	B	13	-	795NR4000	52	WASHER - 1/2 NEOPRENE O RING
-	B	14	-	50-27-0304-08	71	WASHER - FLAT 1/2 304SS
-	B	15	-	751W00002	1444	STRIP GASKET - 1 HOLE EPDM
-	B	16	-	752W00031	124	GASKET THIN RADIUS EPDM 1RV
-	B	17	-	753W00003	214	GASKET - CHIME LAP LIGHT EPDM
-	B	18	-	375G14003	15	2 HL BOLT CHANNEL GALVANIZED
-	B	19	-	375G14009	21	5 HL BOLT CHANNEL GALVANIZED
-	B	20	-	375G14019	2	10 HL BOLT CHANNEL GALVANIZED
-	B	21	-	375G14047	21	24 HL BOLT CHANNEL GALVANIZED
-	B	22	-	375G14095	21	48 HL BOLT CHANNEL GALVANIZED
-	B	23	-	754W00030	2	MANHOLE GASKET 30 HL EPDM
-	B	24	-	756A00000	8	MANUS BOND CAULK

RING 3: 12 GA 1RV		
LOCATION	DESCRIPTION	QTY
HGR TO SIDEWALL BOLTS	1/2 X 1 1/4 FN PC HD HDG	100
VERTICAL SEAM BOLTS	1/2 X 1 1/4 FN PC HD HDG	600
VERTICAL SEAM NUTS	1/2 HEX NUT	700
VERTICAL SEAM WASHERS	1/2 NEOP BKD STEEL GALV	700
VERT SEAM STRIP GASKET	STRIP GSKT - 1 HOLE EPDM	131
CHIME BOLTS	1/2 X 1 SQ HD HDG GRS	520
CHIME LAP BOLTS	1/2 X 1 1/4 SQ HD HDG GRS	40
CHIME WASHER	1/2 FLAT STEEL GALV	520
CHIME NUTS	1/2 HEX NUT	560
CHIME STRIP GASKET	STRIP GSKT - 1 HOLE EPDM	97
CHIME LAP GASKET	GSKT CH/LAP LT EPDM	40
RADIUS GASKET	GSKT THN RAD EPDM 1RV	40
CHIME LAP BOLT WSH REC	1/2 NEOP BKD STEEL GALV	80



NOTE: USE CHIME LAP GASKETS AT DECK SEAM LAPS AT CENTER DOME. APPLY CAULKING ALONG THE BUMP OF EACH CHIME LAP GASKET.



NO.	DATE	BY	CHKD	APPR	DATE	REV.	REVISION DESCRIPTION
1	7/2/2024						
2	7/2/2024						
3	7/2/2024						

CONFIDENTIAL/FRAGILE SECURITIES: BY ACCEPTING POSSESSION OF THIS DOCUMENT, RECEIPT AGREES THAT ITS CONTENTS ARE CONFIDENTIAL, PROPRIETARY TRADE SECRETS OF CST STORAGE. NO PORTION OF THIS DOCUMENT MAY BE REPRODUCED, DISTRIBUTED, OR USED IN ANY MANNER WITHOUT WRITTEN PERMISSION FROM CST STORAGE.

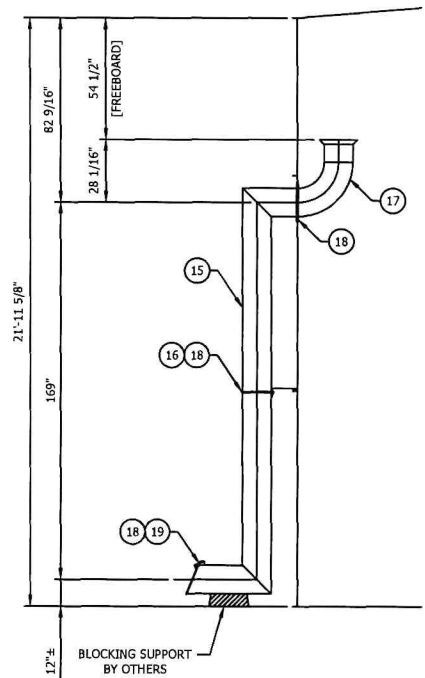


TANK HARDWARE	20'-8 1/2" DIA. x 22' HIGH TANK
COASTAL PACIFIC FOOD DISTRIBUTORS	PUYALLUP, WA, US
DATE	7/2/2024
ISSUE NO.	100058.001
PROJECT NO.	929T022-100068001D

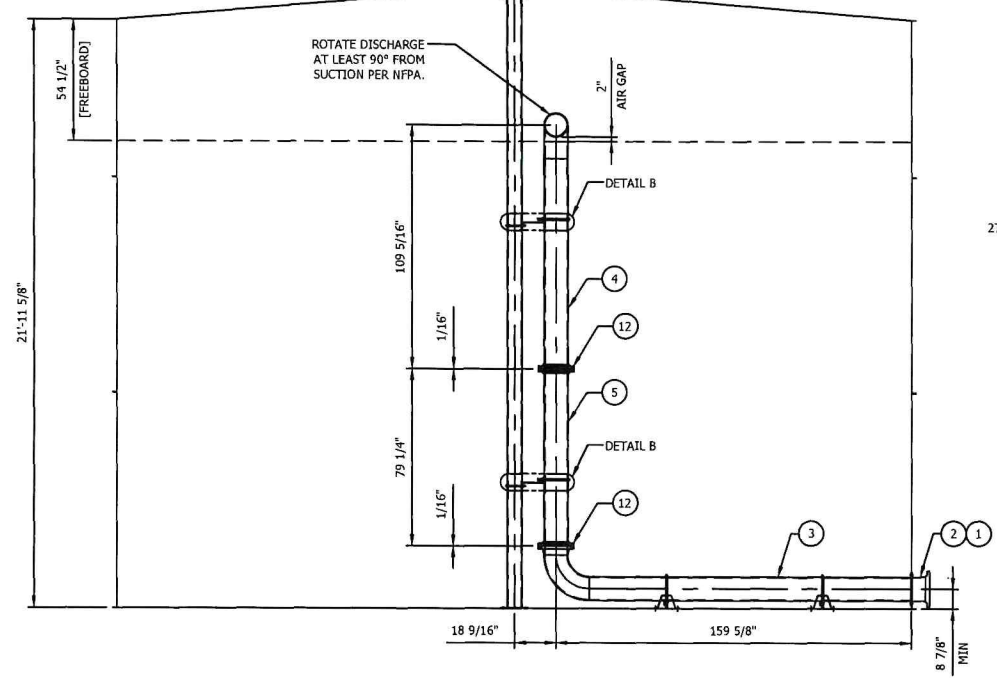
ITEM	QTY	PART NO.	DESCRIPTION	WEIGHT	PAINT
C 1	1	7048100F000	WDMT NZL EXTR PPSLP ON CS 10"x8"x150#	[INLET]	ET
C 2	1	87148PW00HW	8" - 10" DIA DOUBLE NOZZLE EPDM KIT	[INLET]	N
C 3	1	661810-10006801A	INTERNAL RISER, FLOOR, 10" X 159 5/8" LG, SCH 40	[INLET]	E
C 4	1	661810-00438201B	INTERNAL RISER, TOP, 10" X 109 5/16" LG, SCH 40	[INLET]	E
C 5	1	661810-10006801B	INTERNAL RISER, BOTTOM, 10" X 79 1/4" LG, SCH 40	[INLET]	E
C 6	2	795G15060	6" HDG - PIPE U-BOLT W/ NUTS	[INLET]	N
C 7	4	795G15100	10" HDG - PIPE U-BOLT W/ NUTS	[INLET]	N
C 8	4	682810005VA	FLOOR BRACKET BASE	[INLET]	E
C 9	4	795E04006	THREADED ROD- 1/2" DIA X 6" LG.	[INLET]	N
C 10	16	279856-004	NUT 1/2" HEX HDG GR5	[INLET]	N
C 11	2	682804602PKA	SUPPORT ANGLE - 2" X 2" X 1/4" ANGLE X 60" LG.	[INLET]	E
C 12	2	87080GWL00HW	EPDM 150# FLANGE HARDWARE	[INLET]	N
C 13	2	682810-10006801A	6" TO 10" DIA. PIPE, INTERNAL RISER BRACKET 18 9/16" CL	[INLET]	E
C 14					
C 15	1	681812-10006801A	12" DIA. DOWNCOMER 169" CL, SCH10	[OVERFLOW]	ET
C 16	1	680810120	12" DIA. PIPE BRACKET EXT	[OVERFLOW]	ET
C 17	1	320812-10006801A	WEIR CONE W/ELBOW 12" DIA PIPE W/28 1/16" CL	[OVERFLOW]	E
C 18	1	8028PW12242HW	12" OVERFLOW W/ DOWNCOMER HARDWARE KIT	[OVERFLOW]	N
C 19	1	30480112A	FLAP GATE ASSY 12"	[OVERFLOW]	ET
C 20					

FM & NFPA REQUIREMENT:
THE FILL/INLET LINE MUST BE IN A DIFFERENT QUADRANT FROM THE SUCTION LINE (90 DEGREES OR MORE AWAY).

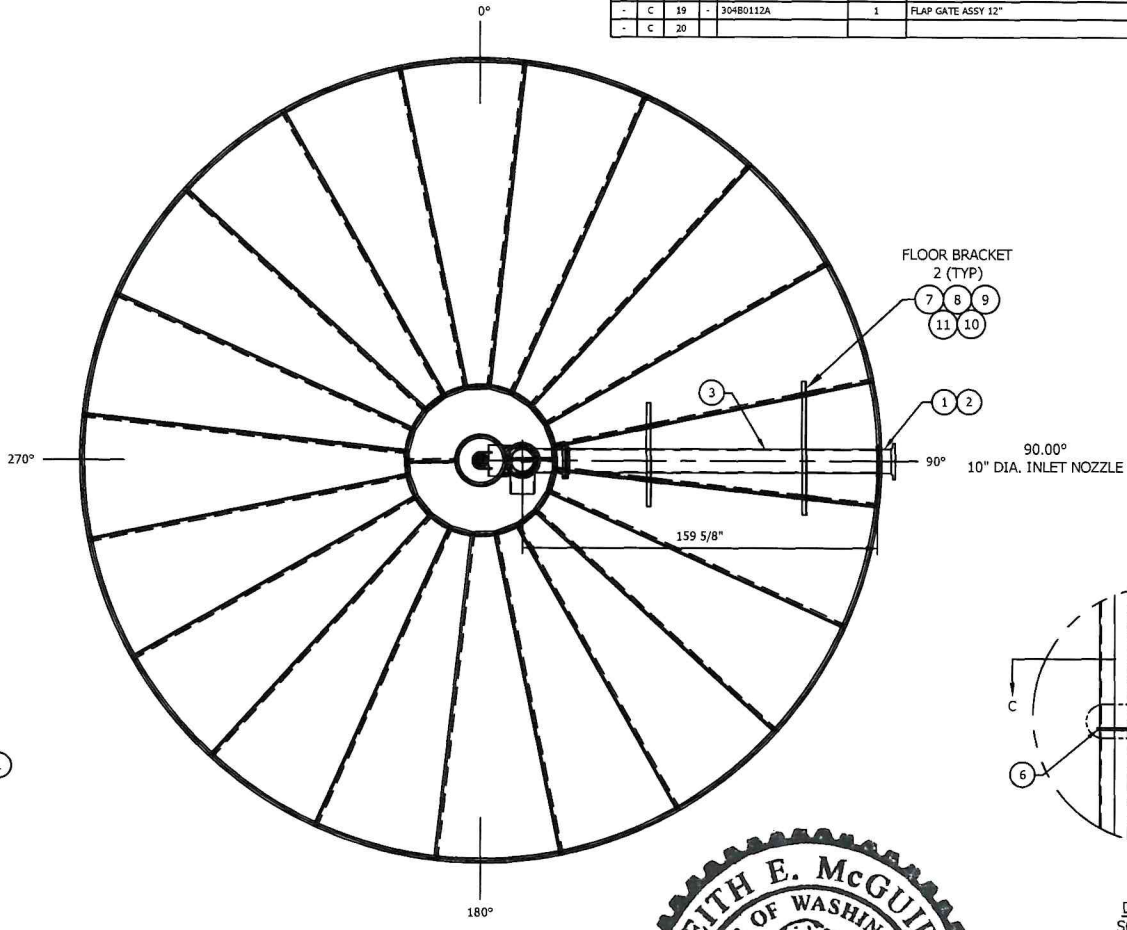
BACK FLOW PREVENTION BY OTHER



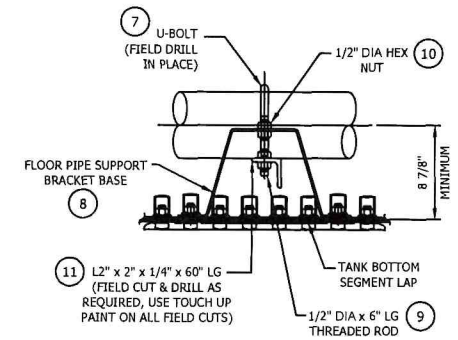
12" DIA. OVERFLOW W/DOWNCOMER DETAIL



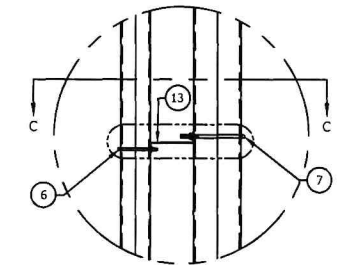
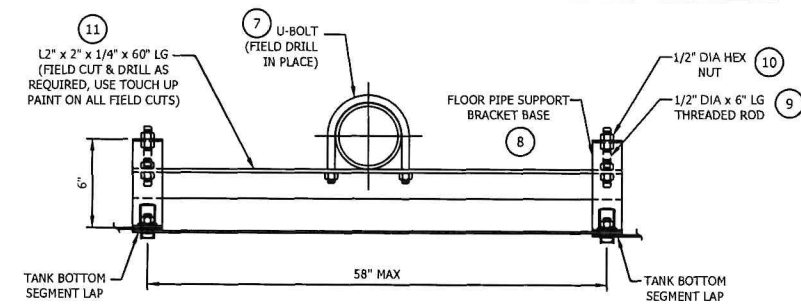
ELEVATION 10" DIA. INTERNAL RISER DETAIL



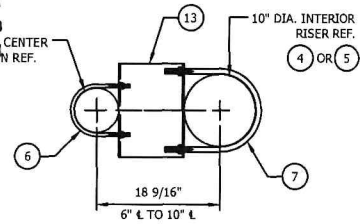
BOTTOM PLAN 10" DIA. INTERNAL RISER DETAIL



FLOOR BRACKET DETAIL



DETAIL B SCALE NTS



SECTION C-C

NO.	DATE	DESCRIPTION	BY	CHKD	APPV	DATE	REV
1	05/02/24	ISSUED PER ECD-10006801-02					
2	05/02/24	ISSUED PER ECD-10006801-03					

CONFIDENTIAL/TRADE SECRETS: BY ACCEPTING POSSESSION OF THIS DOCUMENT, RECIPIENT AGREES THAT ITS CONTENTS ARE CONFIDENTIAL, PROPRIETARY TRADE SECRETS OF CST STORAGE, NO PORTION OF THIS DOCUMENT MAY BE REPRODUCED, DISTRIBUTED, OR USED IN ANY MANNER WITHOUT WRITTEN PERMISSION FROM CST STORAGE.

SCHEDULE OF SPECIAL INSPECTIONS SERVICES FOR FIRE TANK FOUNDATIONS

PROJECT		CPFD - FREEZER EXPANSION - PUYALLUP, WA				
		APPLICABLE TO THIS PROJECT				
MATERIAL / ACTIVITY	SERVICE	REFERENCE	Y/N	EXTENT	AGENT*	DATE COMPLETED
1705.3 Concrete Construction						
Inspect reinforcement, including prestressing tendons, and verify placement.	Field inspection	Per ACI318: Ch. 20,25.2,25.3,26.6.1-26.6.3	Y	Periodic		
Inspection of anchors cast in concrete.		ACI 318:17.8.2	Y	Periodic		
Inspect anchors post-installed in hardened concrete members.	Field inspection	ACI 318: 17.8.2.4 ACI 318: 17.8.2	Y	Continuous		
a. Adhesive anchors installed in horizontal or upward-inclined orientation that resist sustained tension loads.	Field inspection		Y	Continuous		
b. Mechanical and adhesive anchors note defined in 4a.	Field inspection		Y	Continuous		
Verify use of approved design mix	Shop (3) and field inspection	ACI 318: Ch. 19, 26.4.3, 26.4.4	Y	Periodic		
Prior to concrete placement, fabricate specimens for strength tests, perform slump and air content tests, and determine the temperature of the concrete.	Shop (3) and field inspection	ASTM C172, ASTM C31, ACI 318: 26.5, 26.12	Y	Continuous		
Inspect concrete and shotcrete placement for proper application techniques.	Shop (3) and field inspection	ACI 318: 26.5	Y	Continuous		
Verify maintenance of specified curing temperature and techniques	Shop (3) and field inspection	ACI 318: 26.5.3-26.5.5	Y	Periodic		
Inspection of formwork for shape, lines, location and dimensions	Field inspection		Y	Periodic		
Concrete strength testing and verification of compliance with construction documents	Field testing and review of laboratory reports		Y	Periodic		
1705.3.2 Material Tests						
In the absence of sufficient data or documentation providing evidence of conformance to quality standards for materials in Chapters 19 and 20 of ACI 318, testing of materials in accordance with the appropriate standards and criteria for the material in Chapters 19 and 20 of ACI 318 is required.	-	ACI 318	Y	-		
1705.6 Soils						
The approved geotechnical report and the construction documents prepared by the registered design professionals shall be used to determine compliance. During fill placement, the special inspector shall verify that proper materials and procedures are used in accordance with the provisions of the approved geotechnical report.	Submittal review and field inspection	-	Y	-		
1. Verify materials below shallow foundations are adequate to achieve the design bearing capacity.	Field inspection	-	Y	Periodic		
2. Verify excavations are extended to proper depth and have reached proper material.	Field inspection	-	Y	Periodic		
3. Perform classification and testing of compacted fill materials.	Field inspection	-	Y	Periodic		
4. Verify use of proper materials, densities, and lift thicknesses during placement and compaction of controlled fill	Field inspection	-	Y	Continuous		
5. Prior to placement of controlled fill, inspect subgrade and verify that site has been prepared properly	Field inspection	-	Y	Periodic		
* INSPECTION AGENTS		ADDRESS			TELEPHONE NO.	
FIRM						
<p>Notes: 1. The inspection and testing agent(s) shall be engaged by the Owner or the Owner's Agent, and not by the Contractor or Subcontractor whose work is to be inspected or tested. Any conflict of interest must be disclosed to the Building Official prior to commencing work. The qualifications of the Special Inspector(s) and/or testing agencies may be subject to the approval of the Building Official and/or the Design Professional.</p> <p>2. The list of Special Inspectors may be submitted as a separate document, if noted so above.</p> <p>3. Shop Inspections of fabricated items are not required where the fabricator is approved in accordance with IBC Section 1704.2.5.1 and listed in activity 1709.2.</p> <p>4. Observe: Observe on a random basis, operations need not be delayed pending these inspections. Perform: These tasks shall be performed for each welded joint, bolted connection, or steel element.</p> <p>5. NDT of welds completed in an approved fabricator's shop may be performed by that fabricator when approved by the AHJ. Refer to AISC 360, N6.</p>						
Are Special Inspections for Seismic Resistance included in the Statement of Special Inspections?					No	
Are Special Inspections for Wind Resistance included in the Statement of Special Inspections?					No	
DATE:						

