



SteelFab Oregon, Inc
 31975 Rolland Drive
 Tangent, OR 97389
 Phone: 541-231-7400

PRCA20240398 - Revision 3



Date: 9/30/2024

Page 1 of 2

Transmittal #: 00065

Job #: 33166

Project Eveler

For Approval

To: Whiting Turner

Attention: Trevor Steele

Sent Via: Procore

Greg K/SB

We are sending you under separate cover, the following:

- Calculations
- Deck Drawings
- Joist Drawings

Included are 1 print.

TO BE RETURNED BY: 10/14/2024

<u>Drawing Number</u>	<u>Revision</u>	<u>Date Detailed/Revised</u>	<u>Description</u>
PD-00005		9/27/2024	Joist and Deck Calcs
DE1.1	0	9/27/2024	DECK NOTES AND PRODUCT DATA
DE1.2	0	9/27/2024	LEGEND AND TYPICAL DETAILS
DE1.3	0	9/27/2024	ACCESSORY SCHEDULE AND SECTIONS
DE2.1	0	9/27/2024	ROOF DECK LAYOUT PLAN
DE2.2	0	9/27/2024	ROOF DECK LAYOUT PLAN
JE1.01	0	9/30/2024	GENERAL NOTES
JE3.01	0	9/30/2024	ROOF JOIST FRAMING PLAN
JE3.02	0	9/30/2024	ROOF JOIST FRAMING PLAN
JE4.01	0	9/30/2024	JOIST SECTIONS
JE4.02	0	9/30/2024	JOIST SECTIONS

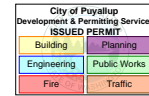
This material is being transmitted for the purpose listed below:

For Approval



SteelFab Oregon, Inc
31975 Rolland Drive
Tangent, OR 97389
Phone: 541-231-7400

PRCA20240398 - Revision 3



Date: 9/30/2024

Page 2 of 2

Transmittal #: 00065

Job #: 33166

Project Eveler

For Approval

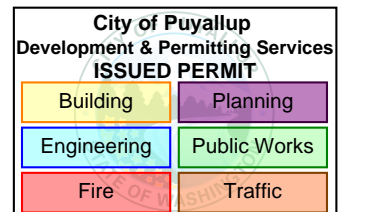
If enclosures are not as noted, please notify at once.

SteelFab Oregon, Inc

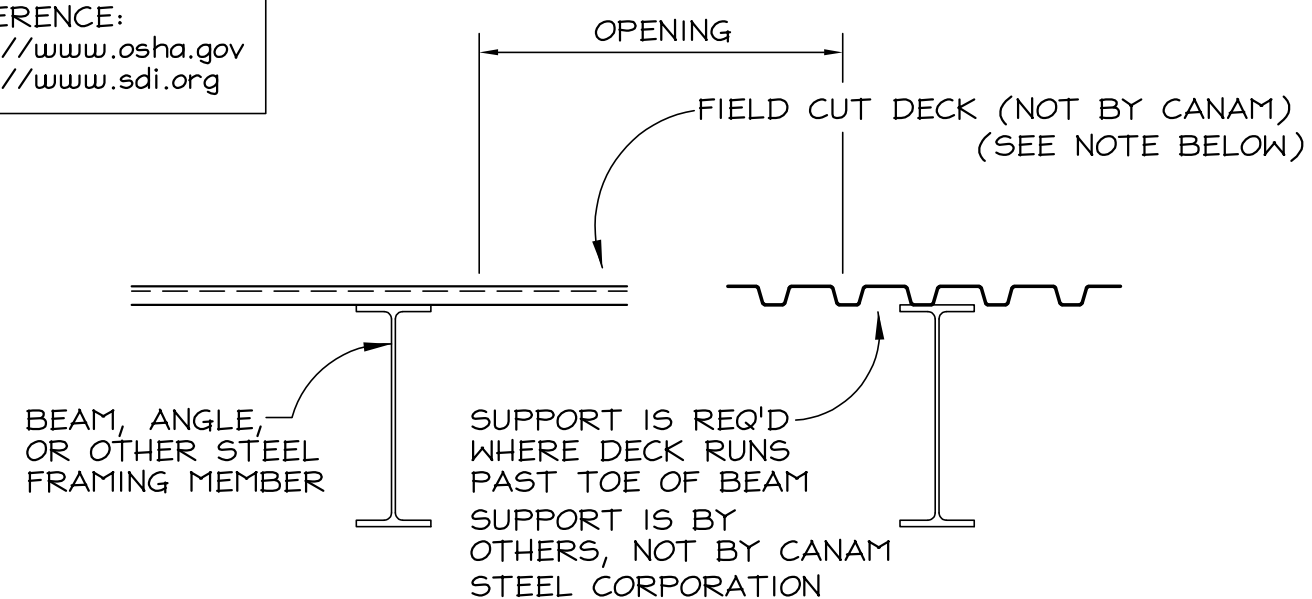
Copy To: Greg K, SFOR DC

By: _____

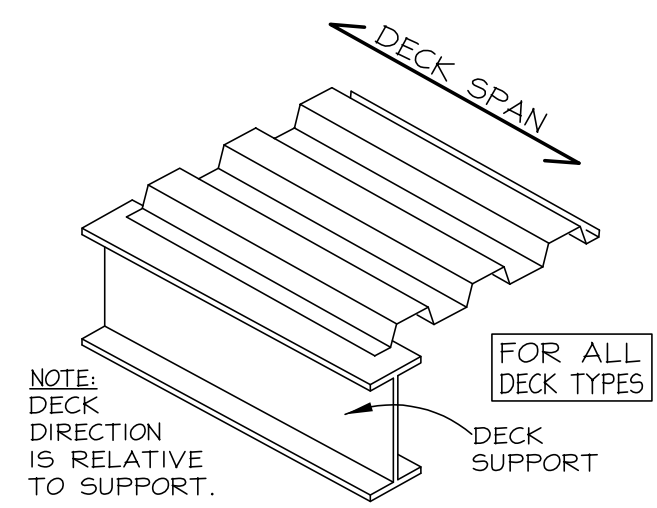
Greg K/SB



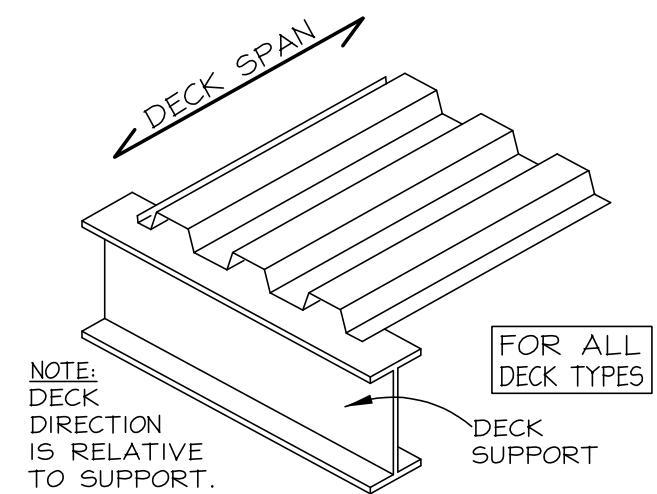
REFERENCE:
<http://www.osha.gov>
<http://www.sdi.org>



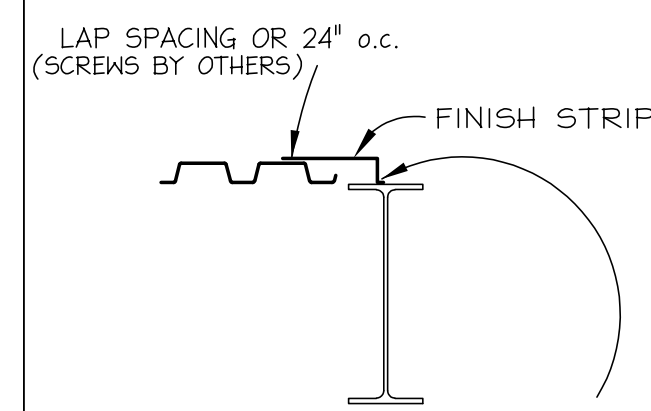
NOTE:
 METAL DECKING HOLES AND OPENINGS SHOULD NOT BE CUT UNTIL IMMEDIATELY PRIOR TO BEING PERMANENTLY FILLED WITH THE EQUIPMENT OR STRUCTURE NEEDED OR INTENDED TO FULFILL ITS SPECIFIC USE. WHEN PROJECT SPECIFIC ERECTION PLAN REQUIRES OTHERWISE, FOLLOW SAFETY ORDINANCES GOVERNING PROTECTIVE MEANS.
TYPICAL FIELD CUT OPENING WITHOUT SLAB



"WEAK" DIRECTION
 APPLIES TO ALL DECK TYPES

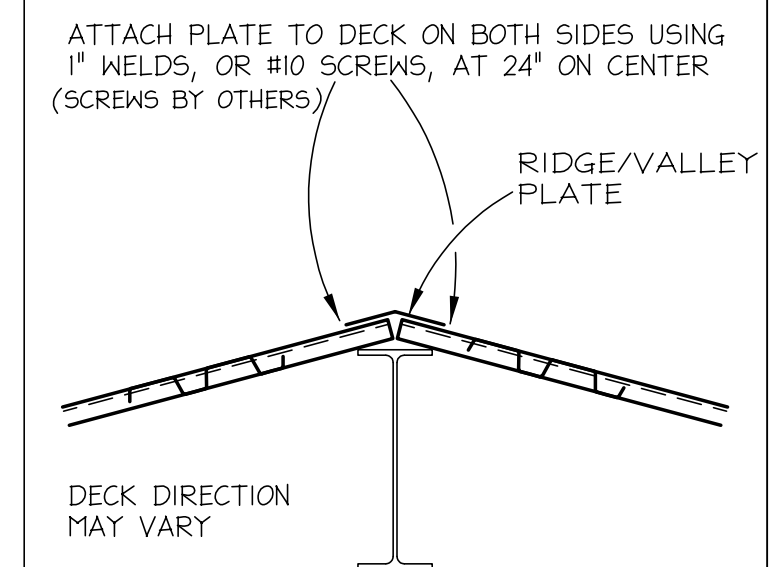


"STRONG" DIRECTION
 APPLIES TO ALL DECK TYPES



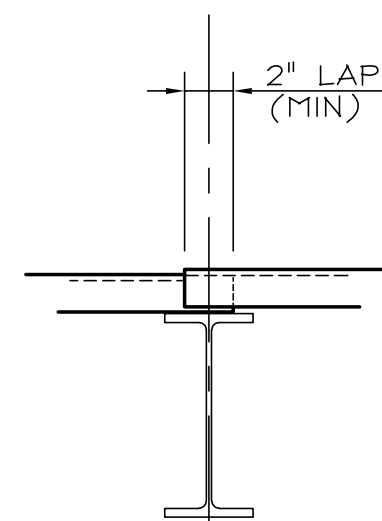
ATTACH TO SUPPORT USING SAME FASTENER AS FOR PERIMETER DECK ATTACHMENT. SPACING IS LESSER OF PERIMETER ATTACHMENT OR 24" o.c.

FINISH STRIP ATTACHMENT DETAIL



DECK DIRECTION MAY VARY

RIDGE/VALLEY PLATE ATTACHMENT DETAIL



TYPICAL DECK LAP @ SUPPORT

DECK LEGEND

- BOA BACK OF ANGLE
- BOC BACK OF CHANNEL
- BM BEAM
- CL CENTERLINE
- COL COLUMN
- EOA EDGE OF ACCESSORY
- EOD EDGE OF DECK
- EPS EDGE OF POURSTOP
- FD DIMENSION TO BE DETERMINED IN FIELD
- FOW FACE OF WALL
- JST JOIST
- TS TUBE STEEL
- UNO UNLESS NOTED OTHERWISE
- VIF VERIFY IN FIELD
- SUGGESTED ERECTION STARTING POINT
- ★ FIELD CUTTING OF DECK REQUIRED
- ∩ TEMPORARY SHORING OF DECK REQUIRED (SHORING IS BY OTHERS NOT BY CANAM STEEL CORPORATION)
- OR ENDS OF DECK BUTTED ON CLBM / WALL
- OVERLAPPING ENDS OF DECK (MIN. 2" LAP)
- ◇ ACCESSORY (SEE PLAN AND SCHEDULE)
- ⊕ SEQUENCE MARKER
- * INFORMATION FURNISHED DURING APPROVAL PROCESS
- ⊠ FIELD CUT OPENING BY OTHERS (SEE TYPICAL DETAIL ON THIS SHEET)

REVISION NO.	DATE	DESCRIPTION
A	7/3/24	FOR APPROVAL
0	9/25/24	FOR FIELD USE



PROJECT NAME: PROJECT EVELER FREEZER EXPN
 LOCATION: PUYALLUP, WA.
 TITLE: LEGEND AND TYPICAL DETAILS
 CUSTOMER: STEELFAB OREGON INC. SF#33166
 CANAM CONTACT: MARCELINO MORQUECHO PHONE: 240-220-4947
 PLANT: PERU, IL.

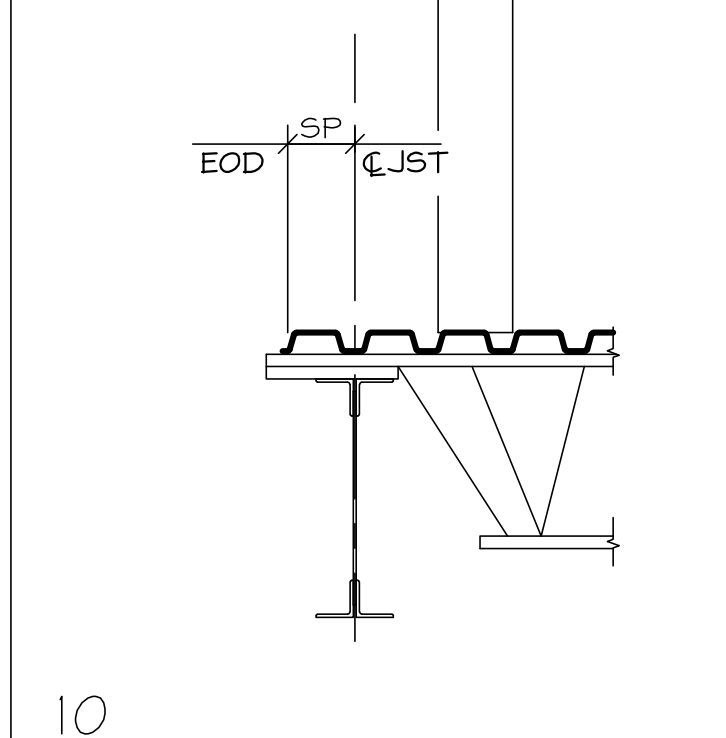
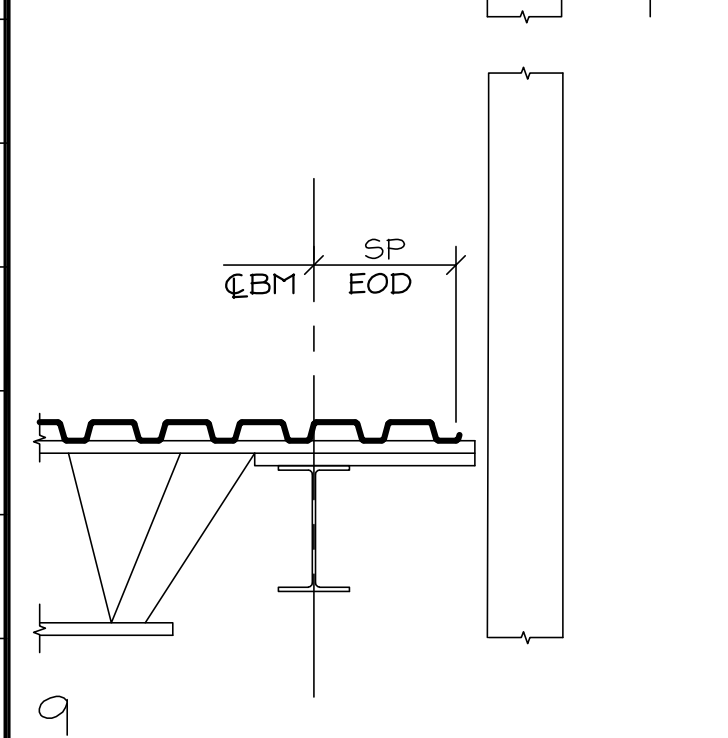
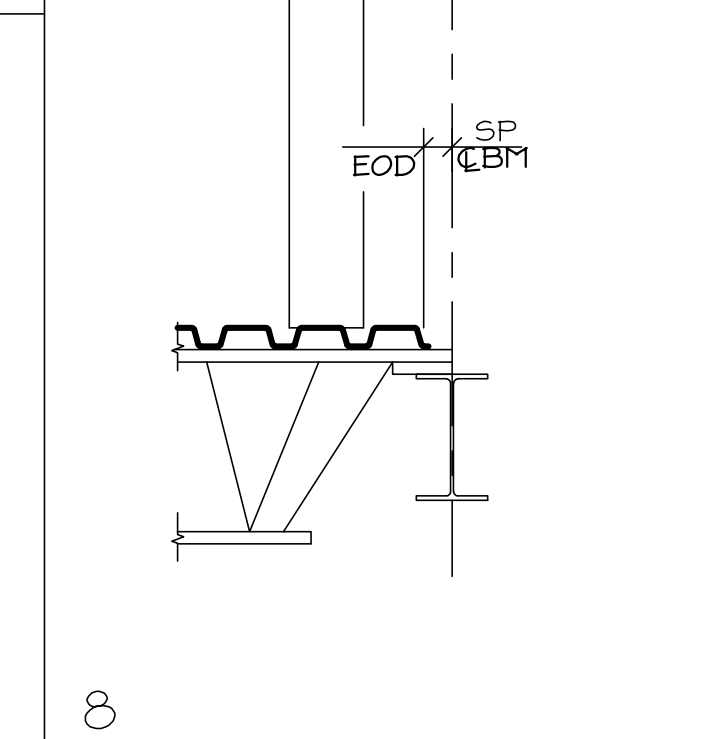
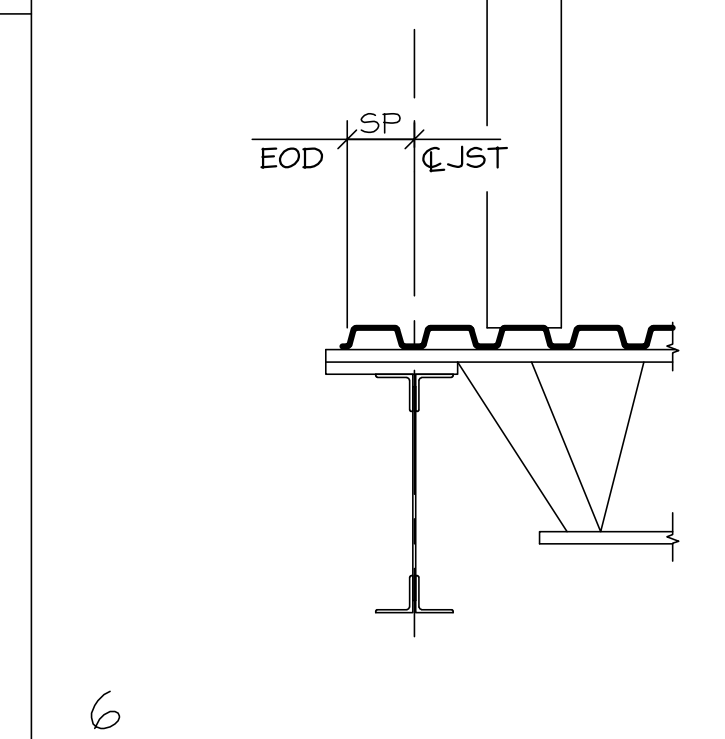
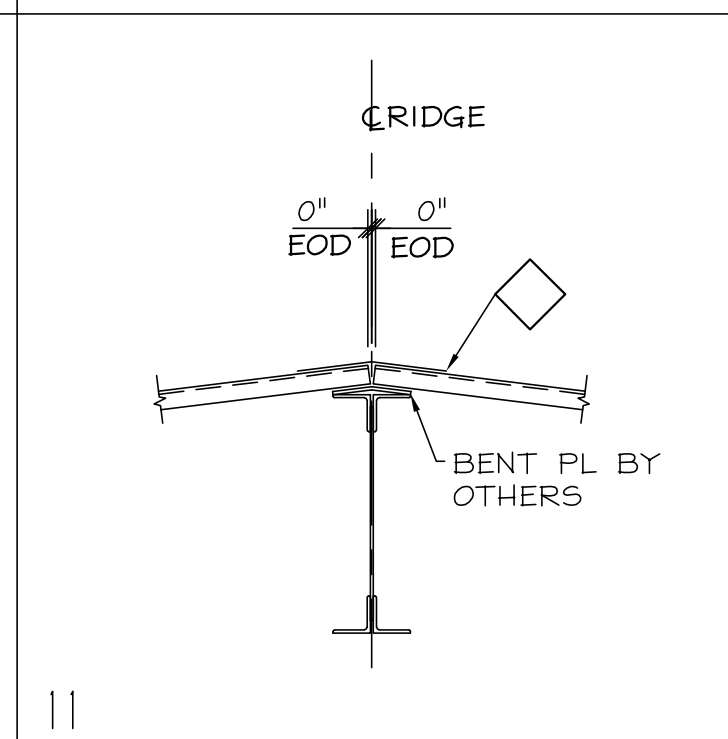
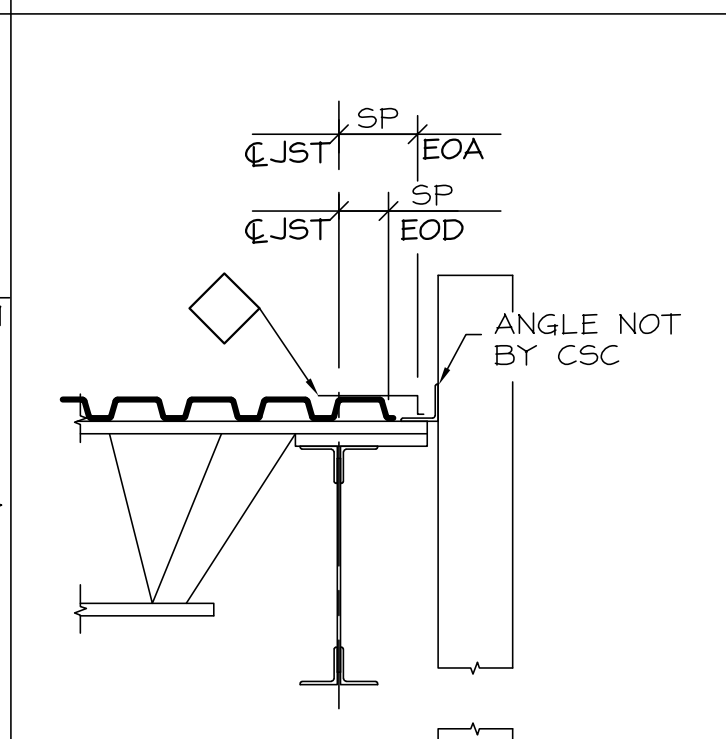
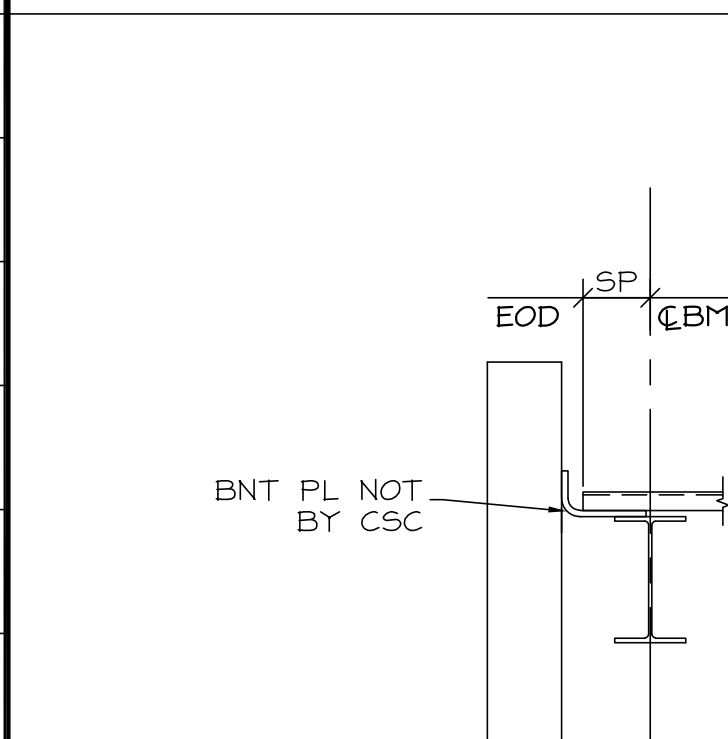
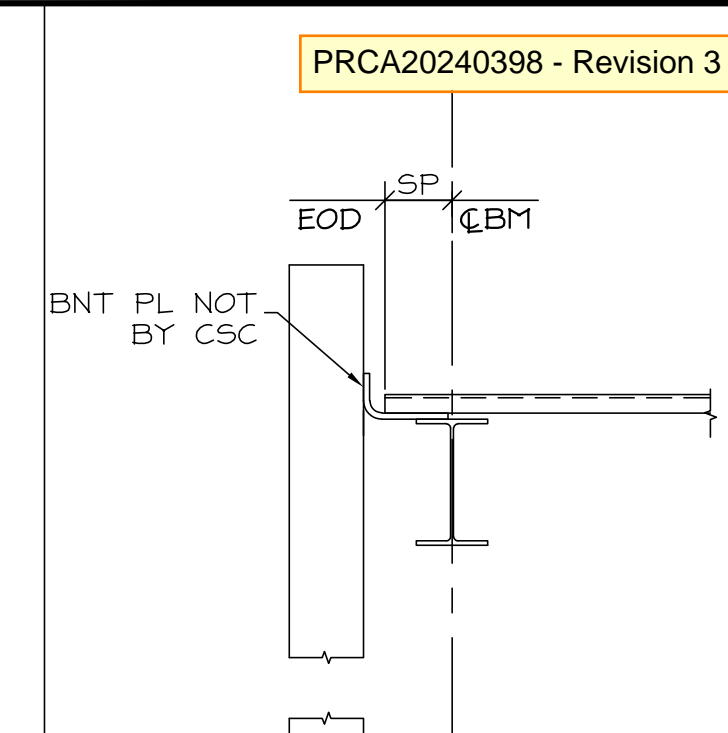
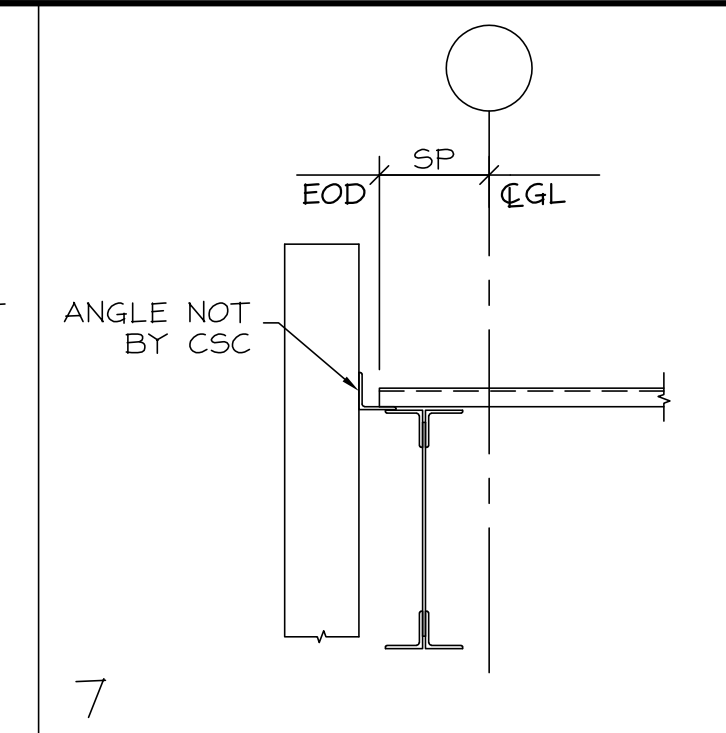
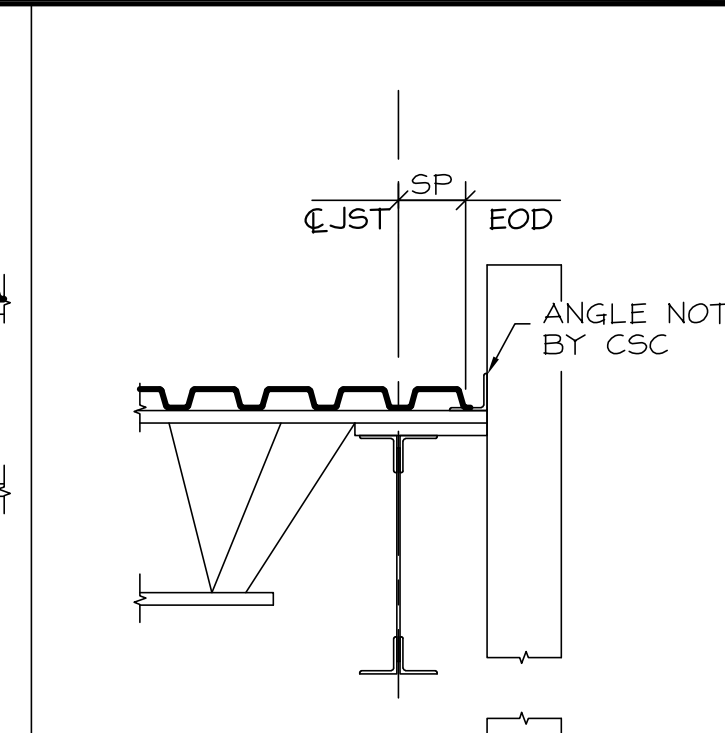
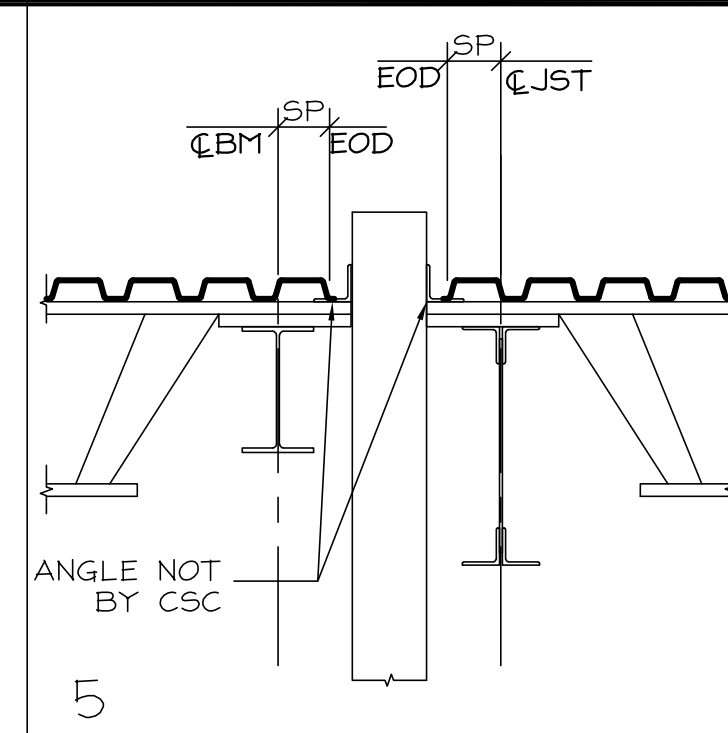
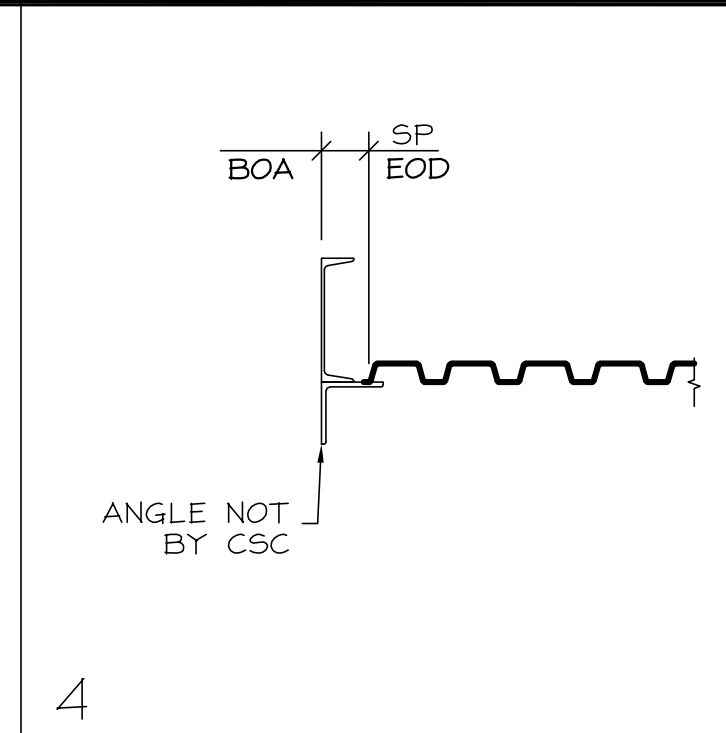
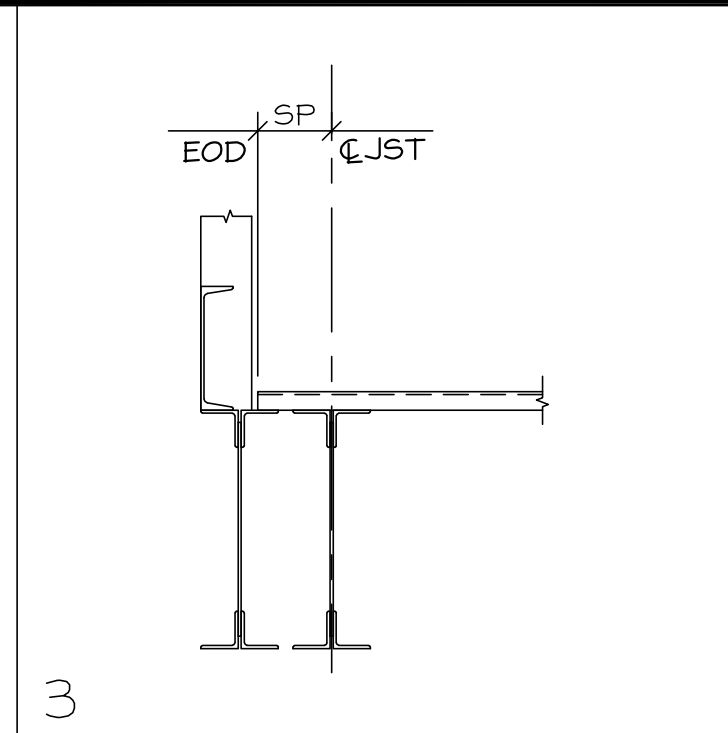
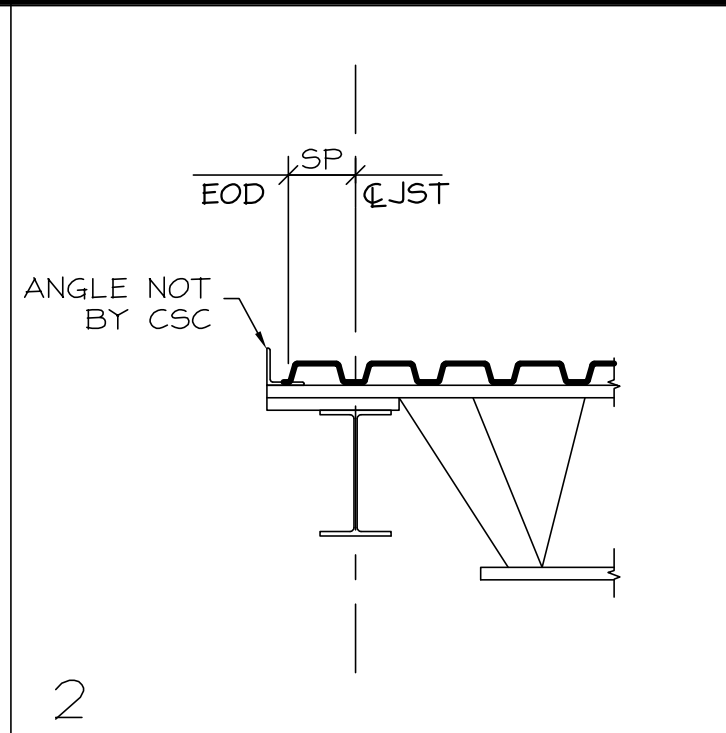
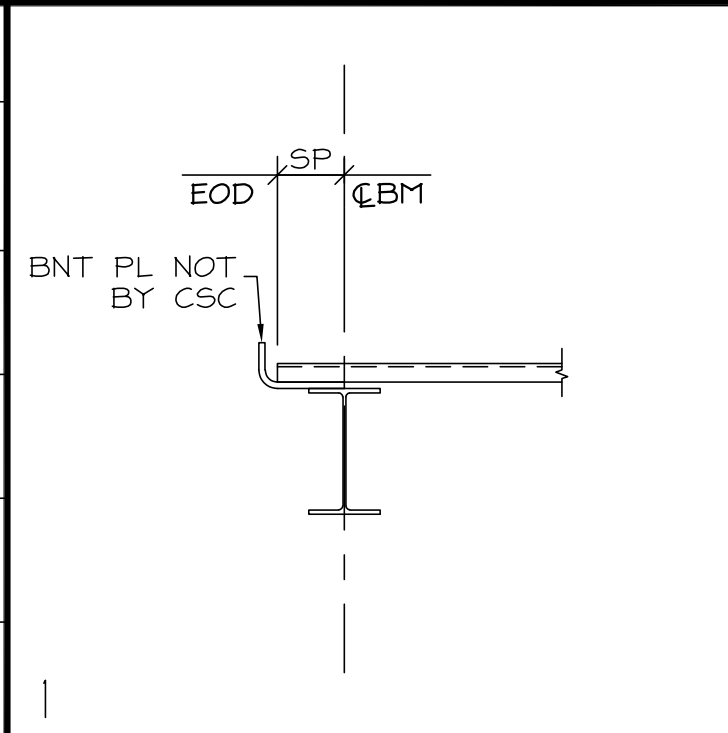
REFER TO SHEET DE1.1 FOR GENERAL NOTES

FOR FIELD USE

	DRAWN BY: JEC CHECKED BY: NAL	PROJECT #: 501994	DRAWING NO: DE1.2
--	----------------------------------	----------------------	----------------------

ACCESSORY SCHEDULE

ITEM NO.	MARK (FIRST TWO DIGITS INDICATE GAUGE)	SECTION (ALL NUMBERS ARE IN INCHES)
1	20FS11 FINISH STRIP	$\frac{1}{2}$ 8
2	20SRP1 RIDGE OR VALLEY FLASHING	$\frac{6}{177 \pm}$
3		
4		
5		
6		
7		
8		
9		
10		
11		
12		
13		
14		
15		
16		
17		
18		
19		
20		
21		
22		
23		
24		
25		
26		
27		
28		



City of Puyallup
Development & Permitting Services
ISSUED PERMIT

Building	Planning
Engineering	Public Works
Fire	Traffic

SECTION NOTES

- AS SECTIONS DRAWN REPRESENT A GENERAL PICTURE OF CUTS AT VARIOUS LOCATIONS ON PLANS, ACCESSORIES SHOWN MAY HAVE DIFFERENT MARKS TO SUIT EACH CONDITION. PLEASE REFER TO PLANS TO IDENTIFY APPROPRIATE MARK NUMBERS AT EACH LOCATION.
- EDGE OF SLAB FORMED BY OTHERS - NOT BY CANAM STEEL CORPORATION UNLESS ACCESSORY (POUR STOP) MARK NUMBER IS SHOWN.
- FIELD CUT AND SUPPORT DECK AS REQUIRED TO SUIT, AT LOCATIONS OF MOMENT / COVER PLATES, ON BEAMS / PLATE GIRDERS AND / OR AT WIND GIRDER DIAGONAL BRACING CONNECTIONS. BY OTHERS NOT BY CANAM STEEL CORPORATION
- BOTTOM OF DECK MUST BE IN FULL CONTACT WITH DECK SUPPORTS. MINIMUM DECK BEARING IN STRONG DIRECTION IS 2", WEAK DIRECTION IS 1/2".
- * SP * WHEN SHOWN - INDICATES SEE PLAN VIEW FOR INFORMATION

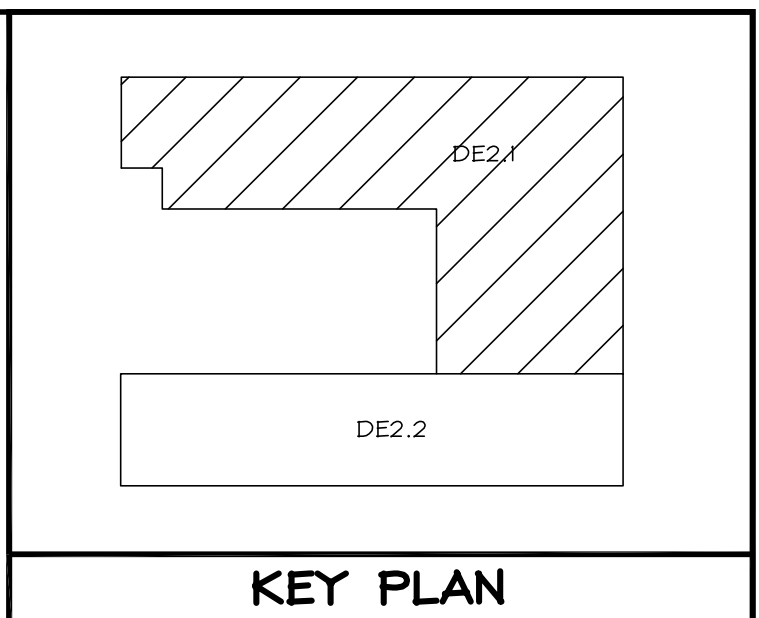
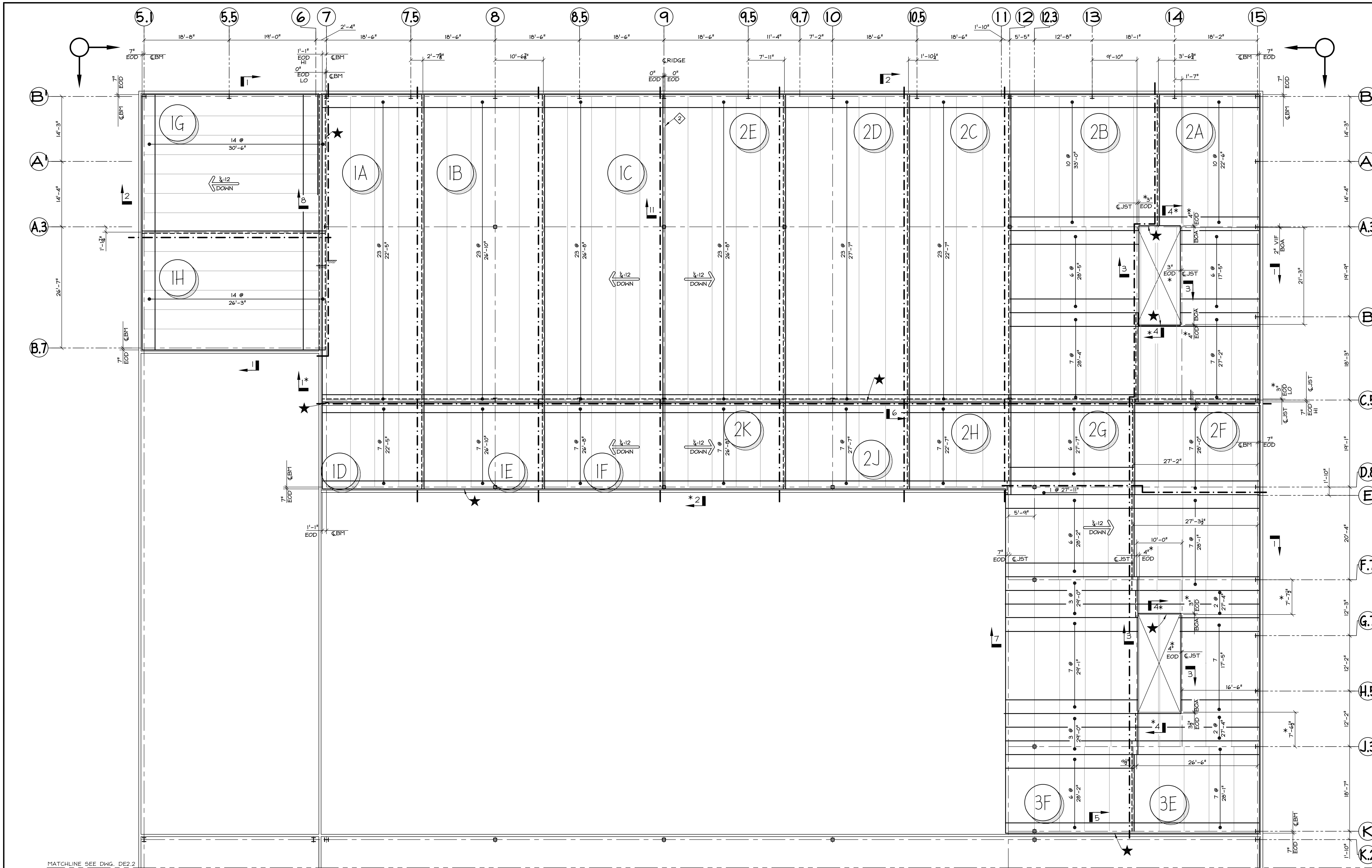
NOTE: SEE PLAN VIEW ONLY FOR EXACT LOCATION OF, AND IF, OR WHERE, ACCESSORIES ARE USED. ALL ACCESSORIES SUPPLIED IN 10'-0" LENGTH UNO. ALL ACCESSORIES ARE GALVANIZED UNO.

REVISION NO.	DATE	DESCRIPTION
A	7/3/24	FOR APPROVAL
0	9/25/24	FOR FIELD USE

CSC
CANAM STEEL CORPORATION

PROJECT NAME: PROJECT EVELER FREEZER EXPN
 LOCATION: PUYALLUP, WA.
 TITLE: ACCESSORY SCHEDULE AND SECTIONS
 CUSTOMER: STEELFAB OREGON INC. SF#33166
 DATE SENT FOR FIELD USE: 9/25/24
 CANAM CONTACT: MARCELINO MORQUECHO PHONE: 240-220-4947
 DATE SENT FOR APPROVAL: 7/3/24
 PLANT: PERU, IL.

REFER TO SHEET DEL.1 FOR GENERAL NOTES	FOR FIELD USE	PROJECT #: 501994	DRAWING NO.: DE1.3
--	----------------------	----------------------	-----------------------

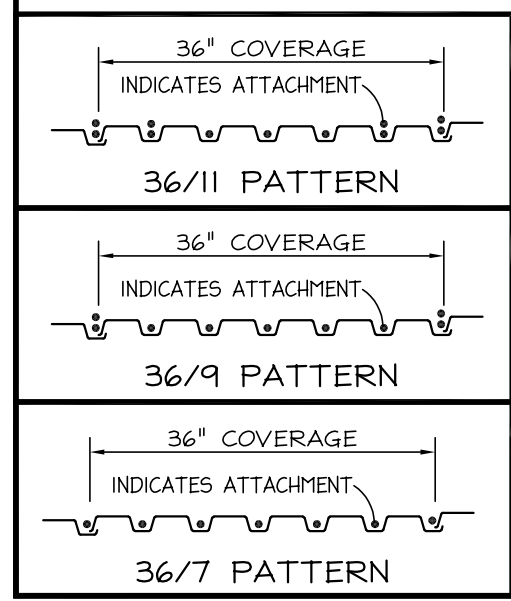


PRCA20240398 - Revision 3

City of Puyallup
Development & Permitting Services
ISSUED PERMIT

Building	Planning
Engineering	Public Works
Fire	Traffic

MATCHLINE SEE DWG. DE2.2



ERECTOR NOTE:
ANY SUBSTITUTIONS, OR DEVIATION FROM THIS ATTACHMENT MUST BE APPROVED BY THE ENGINEER OF RECORD.

ERECTOR NOTE:
IT IS THE RESPONSIBILITY OF THE ERECTOR TO PROVIDE PROPER FALL PROTECTION IN COMPLIANCE WITH OSHA REGULATIONS AT ALL DECK OPENINGS, AND PERIMETERS.

ROOF DECK LAYOUT PLAN

- INDICATES 1 1/2" DEEP 'B' TYPE ROOF DECK 22 GA., PAINTED GRAY/WHITE, 36" COVERAGE
- FIELD OF ROOF ATTACH DECK TO EACH SUPPORT USING HILTI X-HSN 24 FASTENERS @ 36/7 PATTERN ATTACH SIDE-LAPS WITH (6) #8 TEK SCREWS PERIMETER (20'-0" WIDTH @ PERIMETER) ATTACH DECK TO EACH SUPPORT USING HILTI X-HSN 24 FASTENERS @ 36/9 PATTERN ATTACH SIDE-LAPS WITH (5) #8 TEK SCREWS CORNERS (20'-0"x20'-0") ATTACH DECK TO EACH SUPPORT USING HILTI X-HSN 24 FASTENERS @ 36/11 PATTERN ATTACH SIDE-LAPS WITH (5) #8 TEK SCREWS HILTI FASTENERS NOT BY CSC #8 TEK SCREWS NOT BY CSC

[2021 Washington State Residential Code, section R311.3.2]
Floor Elevations at Other Exterior Doors
Doors other than the required egress door shall be provided with landings or floors not more than 7-3/4 inches (196 mm) below the top of the threshold.

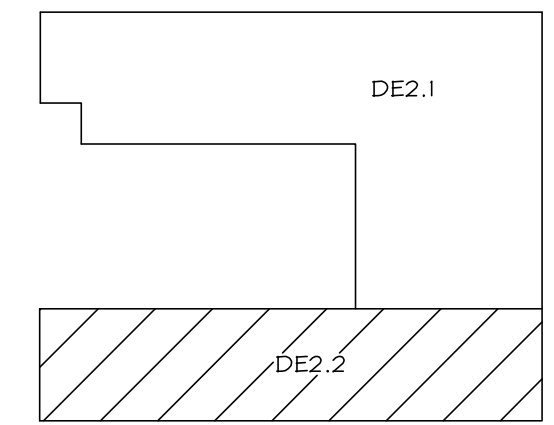
REVISION NO.	DATE	DESCRIPTION
A	7/3/24	FOR APPROVAL
0	9/25/24	FOR FIELD USE

REFER TO SHEET DE1.1 FOR GENERAL NOTES

FOR FIELD USE



PROJECT NAME:	PROJECT EVELER FREEZER EXPN		
LOCATION:	PUYALLUP, WA.		
TITLE:	ROOF DECK LAYOUT PLAN		
CUSTOMER:	STEELFAB OREGON INC. SF#33166		
CANAM CONTACT:	MARCELINO MORQUECHO	PHONE:	240-220-4947
PLANT:	PERU, IL.		
DRAWN BY:	JEC	PROJECT #:	501994
CHECKED BY:	NAL	DRAWING NO.:	DE2.1

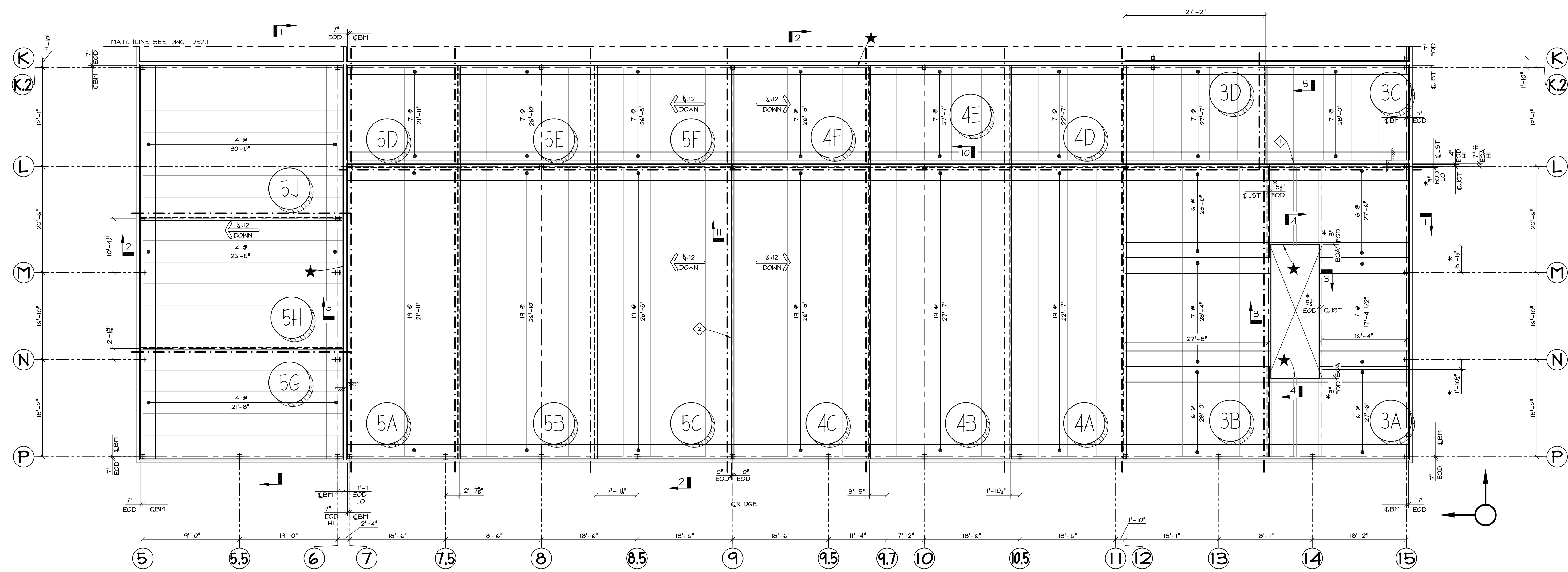


KEY PLAN

PRCA20240398 - Revision 3

City of Puyallup
Development & Permitting Services
ISSUED PERMIT

Building	Planning
Engineering	Public Works
Fire	Traffic



[2021 Washington State Building Code, section 1705.2.2]
Cold-Formed Steel Deck
Special inspections and qualification of welding special inspectors for cold-formed steel floor and roof deck shall be in accordance with the quality assurance inspection requirements of SDI QA/QC.

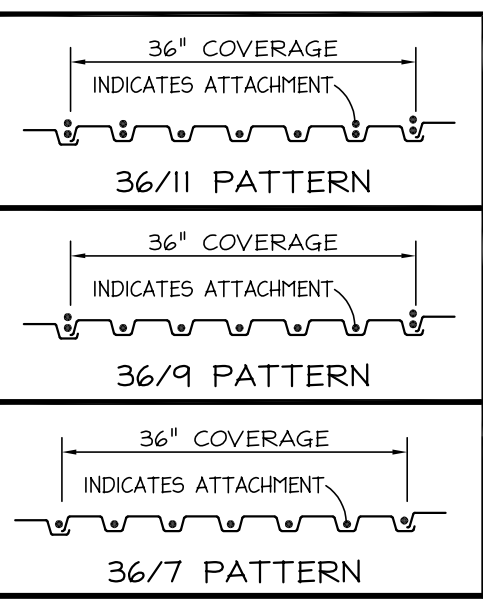
ROOF DECK LAYOUT PLAN

REF. DWG. S-103

- INDICATES 1 1/2" DEEP 'B' TYPE ROOF DECK
22 GA., PAINTED GRAY/WHITE, 36" COVERAGE
- FIELD OF ROOF
ATTACH DECK TO EACH SUPPORT USING HILTI X-HSN 24 FASTENERS @ 36/7 PATTERN
ATTACH SIDE-LAPS WITH (6) #8 TEK SCREENS
- PERIMETER (20'-0" WIDTH @ PERIMETER)
ATTACH DECK TO EACH SUPPORT USING HILTI X-HSN 24 FASTENERS @ 36/4 PATTERN
ATTACH SIDE-LAPS WITH (5) #8 TEK SCREENS
- CORNERS (20'-0"x20'-0")
ATTACH DECK TO EACH SUPPORT USING HILTI X-HSN 24 FASTENERS @ 36/11 PATTERN
ATTACH SIDE-LAPS WITH (5) #8 TEK SCREENS
- HILTI FASTENERS NOT BY CSC
#8 TEK SCREENS NOT BY CSC

ERECTOR NOTE:
ANY SUBSTITUTIONS, OR DEVIATION FROM THIS ATTACHMENT MUST BE APPROVED BY THE ENGINEER OF RECORD.

ERECTOR NOTE:
IT IS THE RESPONSIBILITY OF THE ERECTOR TO PROVIDE PROPER FALL PROTECTION IN COMPLIANCE WITH OSHA REGULATIONS AT ALL DECK OPENINGS, AND PERIMETERS.



REVISION NO.	DATE	DESCRIPTION
A	7/3/24	FOR APPROVAL
0	9/25/24	FOR FIELD USE



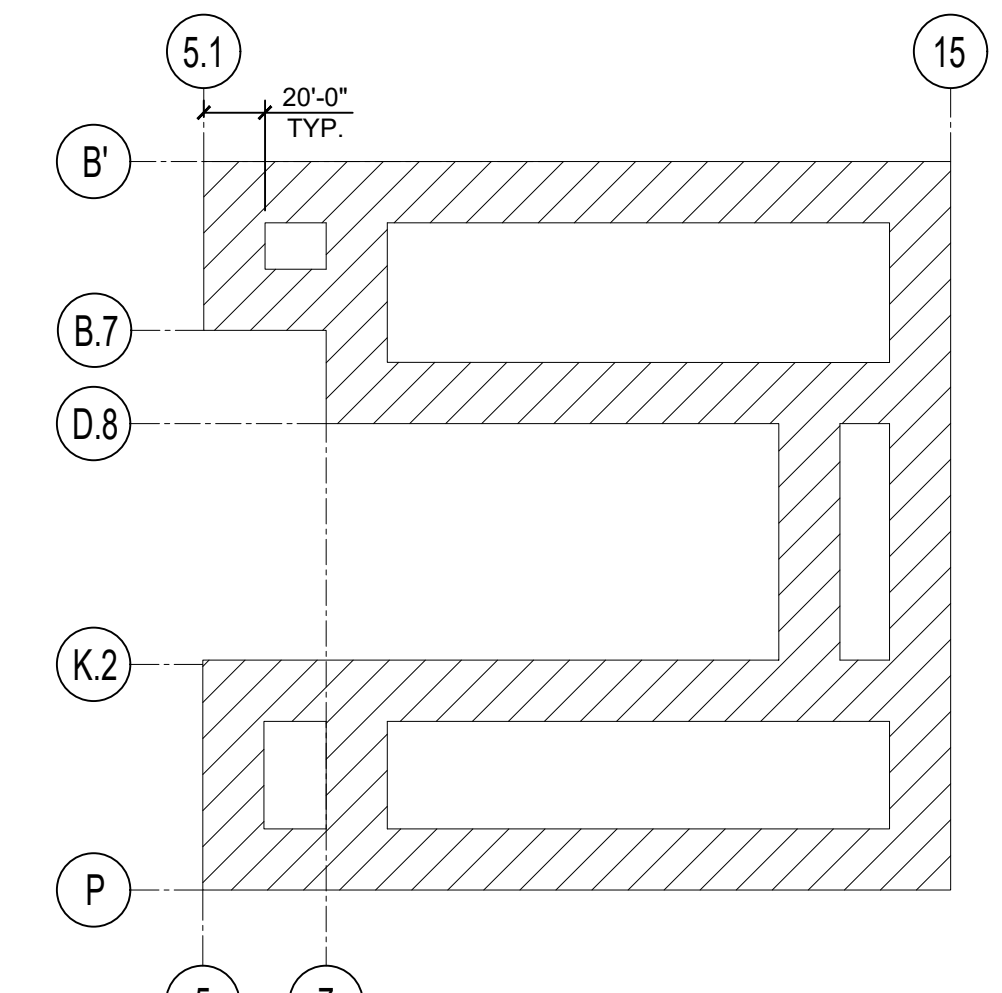
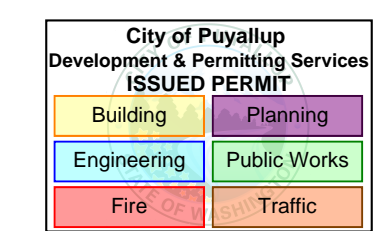
PROJECT NAME:	PROJECT EVELER FREEZER EXPN														
LOCATION:	PUYALLUP, WA.														
TITLE:	ROOF DECK LAYOUT PLAN														
CUSTOMER:	STEELFAB OREGON INC. SF#33166														
DATE SENT FOR FIELD USE:	9/25/24	CANAM CONTACT:	MARCELINO MORQUECHO PHONE: 240-220-4947												
DATE SENT FOR APPROVAL:	7/3/24	PLANT:	PERU, IL.												
REFER TO SHEET DE.1 FOR GENERAL NOTES	FOR FIELD USE		<table border="1"> <tr> <td>DRAWN BY:</td> <td>JEC</td> <td>PROJECT #:</td> <td>501994</td> <td>DRAWING NO.:</td> <td>DE2.2</td> </tr> <tr> <td>CHECKED BY:</td> <td>NAL</td> <td></td> <td></td> <td></td> <td></td> </tr> </table>	DRAWN BY:	JEC	PROJECT #:	501994	DRAWING NO.:	DE2.2	CHECKED BY:	NAL				
DRAWN BY:	JEC	PROJECT #:	501994	DRAWING NO.:	DE2.2										
CHECKED BY:	NAL														

DESIGN NOTES	
NUMBER	DESCRIPTION
1	LOAD COMBINATION PER 2018 WASHINGTON STATE BLDG. CODE.
2	ROOF DEAD LOAD = 25 PSF (DEAD = 10 PSF & MECH = 15 PSF) AND LIVE LOAD = 20 PSF.
3	NET UPLIFT = SEE DIAGRAM ON JE1.01.
4	Sds = 0.847
5	DESIGN ALL JOIST SEATS TO RESIST 3.0K OF LATERAL WIND LOAD PERPENDICULAR TO EACH SEAT.
6	CAMBER PER SJI STANDARD

AVAILABLE CONTRACT DRAWINGS		
DWG. #	DATE	
S-101 THRU S-103, S-201, S-202	05/15/2024	
S-501 THRU S-504, S-601	05/15/2024	
G-002	03/06/2024	

DRAWING INDEX	
SHT #	DRAWING NAME
JE1.01	JOIST COVER SHEET
JE3.01	ROOF JOIST FRAMING PLAN
JE3.02	ROOF JOIST FRAMING PLAN
JE4.01	JOIST SECTIONS
JE4.02	JOIST SECTIONS

PRCA20240398 - Revision 3



UPLIFT DIAGRAM
REF.: S-103

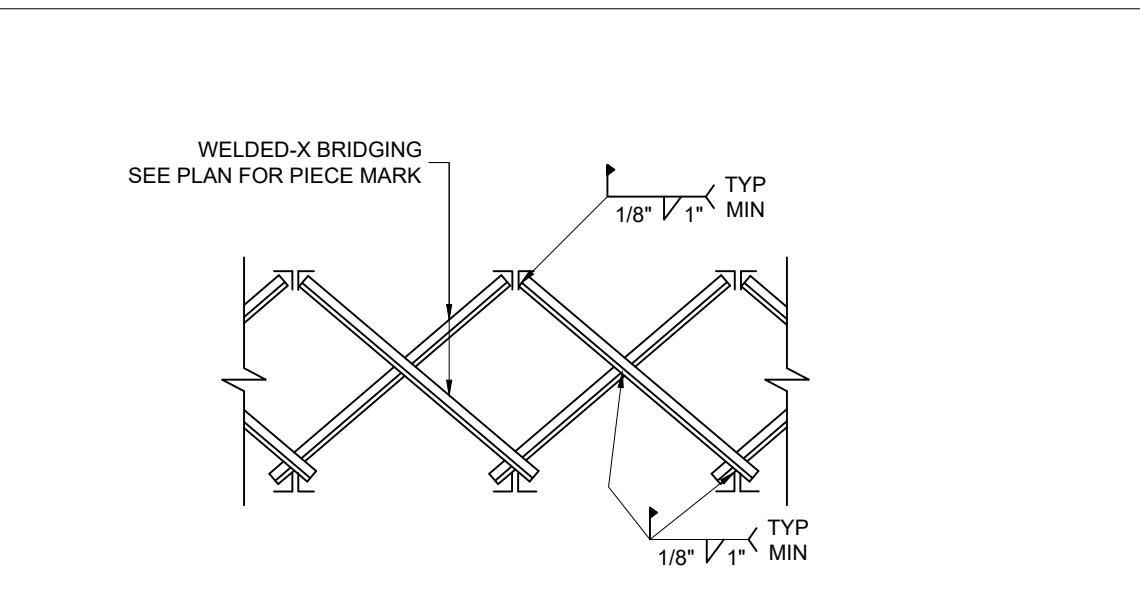
NET UPLIFT CHART

ZONES	NET UPLIFT
INTERIOR	10 PSF
EDGE & CORNER	15 PSF

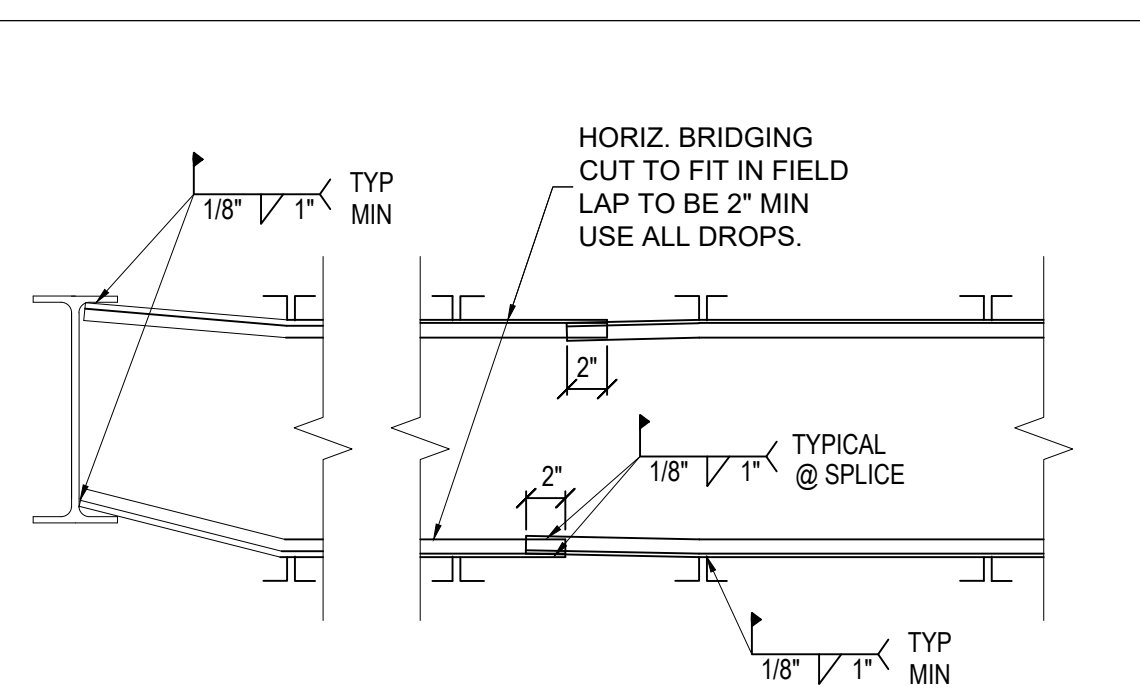
- ### JOIST ERECTOR NOTES
- MINIMUM DESIGN REQUIREMENTS TO BE PER STEEL JOIST INSTITUTE (SJI) LATEST EDITION, UNLESS OTHERWISE NOTED HEREIN.
 - PAINT - ONE PROVISIONAL SHOP COAT GRAY PRIMER (SPECIFICATIONS PROVIDED UPON REQUEST).
 - CAMBER WILL BE FURNISHED ON ALL JOISTS AND JOIST GIRDERS (SEE SJI LATEST EDITION FOR APPROXIMATE CAMBER) UNLESS SPECIFICALLY MODIFIED BY THE CONTRACT DOCUMENTS. CAMBER AND DEFLECTION MUST BE CONSIDERED WHEN DETAILING FRAMING ADJACENT OR FRAMING TO JOISTS OR GIRDERS.
 - THE DESIGN IS BASED UPON LOAD INFORMATION SPECIFICALLY SUBMITTED TO CANAM STEEL CORPORATION. NO SPECIAL LOADS OR OTHER FORCES HAVE BEEN PROVIDED FOR UNLESS PURCHASER HAS REQUESTED THEM IN WRITING. SUCH SPECIAL LOADS OR OTHER FORCES SHALL INCLUDE, WITHOUT LIMITATION, UPLIFT, CONCENTRATED LOADS FROM ROOF TOP UNITS, AXIAL LOADS FROM KICKER ANGLES, ETC.
 - JOISTS SHALL BE INSTALLED IN ACCORDANCE WITH OSHA 1926 SUBPART R. CONSULT THE OSHA SAFETY STANDARDS FOR SPECIFICS.
 - IN BAYS 60'-0" OR LESS, THE FOLLOWING APPLIES TO ANY COLUMN JOISTS OR JOISTS NEAR A COLUMN:
 - THE JOISTS HAVE NOT BEEN DESIGNED TO SUPPORT AN EMPLOYEE WITHOUT BRIDGING INSTALLED.
 - THE JOISTS ARE NOT OSHA JOISTS DESIGNED FOR STABILITY PER SUBPART R.
 - SPECIAL ERECTION METHODS MUST BE INCORPORATED.
 - EMPLOYERS WILL BE CONSIDERED TO BE IN COMPLIANCE WITH OSHA 1926 SUBPART R IF THEY ERECT THESE JOISTS EITHER BY: (1) INSTALLING BRIDGING OR OTHERWISE STABILIZING THE JOIST PRIOR TO RELEASING THE HOISTING CABLE, OR (2) RELEASING THE CABLE WITHOUT HAVING A WORKER ON THE JOISTS.
 - DO NOT ALLOW EMPLOYEES ON THESE JOISTS UNTIL ADEQUATELY STABILIZED.
 - IN BAYS GREATER THAN 60'-0", JOISTS AT OR NEAR COLUMNS SHALL BE ERECTED IN TANDEM (PAIR) WITH AN ADJACENT JOIST. ALL BRIDGING MUST BE INSTALLED BEFORE LIFTING AND THE PAIR OF JOISTS MUST BE SECURED TO THEIR SUPPORT BEFORE RELEASING THE HOISTING LINE. THIS REQUIREMENT MAY BE WAIVED UNDER CERTAIN CONDITIONS.

GENERAL NOTES

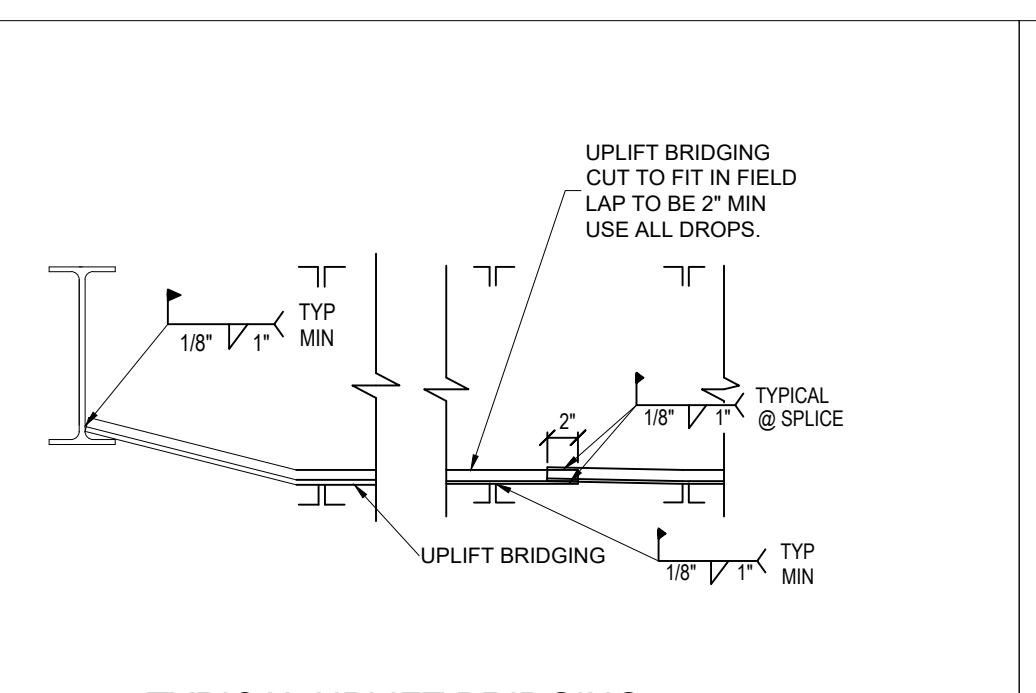
- ANY DISCREPANCY IN DIMENSIONS, DETAILS, OR FABRICATION DISCOVERED DURING ERECTION SHALL BE BROUGHT TO THE IMMEDIATE ATTENTION OF CANAM STEEL CORPORATION, WHO SHALL HAVE THE OPTION OF EXAMINING THE PROBLEM AT THE JOB-SITE BEFORE ANY CORRECTIVE MEASURES ARE UNDERTAKEN. ALL REPAIRS AND REQUIRED ADDITIONAL EXPENSE MUST BE AUTHORIZED IN WRITING BY CANAM STEEL CORP., BEFORE ANY REPAIR WORK IS PERFORMED. CANAM STEEL CORP. WILL NOT BE RESPONSIBLE FOR ADDITIONAL EXPENSES FOR CORRECTIVE MEASURES UNDERTAKEN WITHOUT PRIOR APPROVAL.
- ALL PRODUCTS PROVIDED BY CANAM STEEL CORPORATION IN CONNECTION WITH THIS DRAWING ARE SUBJECT TO CANAM STEEL CORPORATION'S STANDARD TERMS AND CONDITIONS FOR CANAM PRODUCT SALES. BY ACCEPTING THE PRODUCTS, THE PURCHASER ACKNOWLEDGES THAT THEY HAVE RECEIVED AND REVIEWED THESE TERMS AND CONDITIONS.
- THE ISSUANCE OF THIS DRAWING DOES NOT CONSTITUTE THE ACCEPTANCE OF A CUSTOMERS ORDER.
- © 2021, CANAM STEEL CORPORATION. UNAUTHORIZED USE OF THIS DRAWING AND INFORMATION PROVIDED HEREIN IS STRICTLY FORBIDDEN.
- CANAM'S ERECTION DRAWINGS HEREIN WERE PREPARED USING THE STRUCTURAL PORTION OF THE CONTRACT DRAWINGS AS ITS PRIMARY GUIDE AND USING THE ARCHITECTURAL DRAWINGS (WHEN PROVIDED) ONLY FOR MISSING INFORMATION OR FOR CLARIFICATION. CANAM DOES NOT ACCEPT ANY RESPONSIBILITY FOR DISCREPANCIES BETWEEN THE STRUCTURAL AND ARCHITECTURAL DRAWINGS.
- THESE DRAWINGS ARE TO BE USED ONLY FOR THE ERECTION OF PRODUCTS SUPPLIED BY CANAM STEEL CORPORATION AS INDICATED BY AN ERECTION MARK ON THE PLANS AND/OR SECTIONS.
- CANAM STEEL CORPORATION IS NOT RESPONSIBLE FOR HANDLING AND ERECTION OF MATERIALS IT SUPPLIES. THE DESIGN AND MANUFACTURE OF THE MATERIALS ASSUMES THAT THEY ARE HANDLED IN ACCORDANCE WITH ALL APPLICABLE LAWS AND REGULATIONS. CANAM STEEL CORPORATION IS NOT RESPONSIBLE FOR ANY MISHANDLING OR FAILURE TO PROPERLY ERECT THE MATERIALS.
- CANAM STEEL CORPORATION HAS NOT EXAMINED ANY FIELD CONDITIONS AND ASSUMES NO RESPONSIBILITY FOR ANY SITE CONDITIONS. PURCHASER MUST NOTIFY CANAM STEEL CORPORATION OF ANY DISCREPANCIES BETWEEN THE FIELD CONDITIONS AND CANAM STEEL CORPORATION'S FIELD USE DRAWINGS.
- ANY MODIFICATION OF MATERIAL SUPPLIED BY CANAM STEEL CORPORATION WITHOUT PRIOR WRITTEN CONSENT WILL AUTOMATICALLY RELEASE CANAM FROM ALL LIABILITY WITH RESPECT TO SUCH MATERIAL.



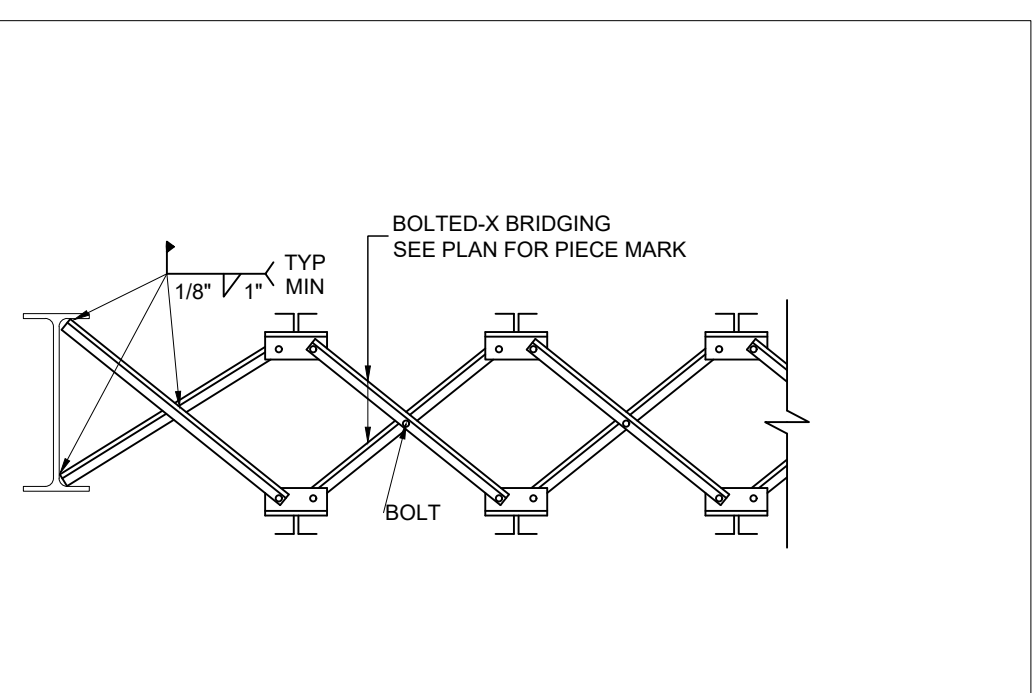
TYPICAL WELDED DIAGONAL BRIDGING



TYPICAL HORIZONTAL BRIDGING



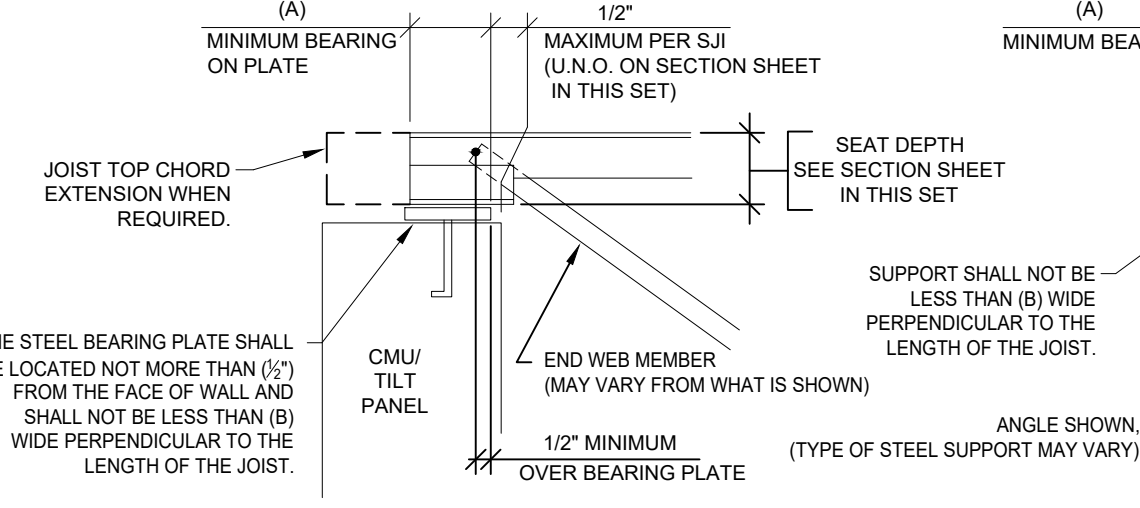
TYPICAL UPLIFT BRIDGING



TYPICAL BOLTED DIAGONAL BRIDGING

KEY NOTE	K-SERIES & LH SERIES 02-06	LH SERIES 07-17 DLH SERIES 10-17	DLH-SERIES 18-25	CJ SERIES SEAT DEPTH ≥ 5"	JOIST GIRDERS
(A)	2"	4"	6"	4"	4"
*(B)	7"	9"	13"	9"	9"

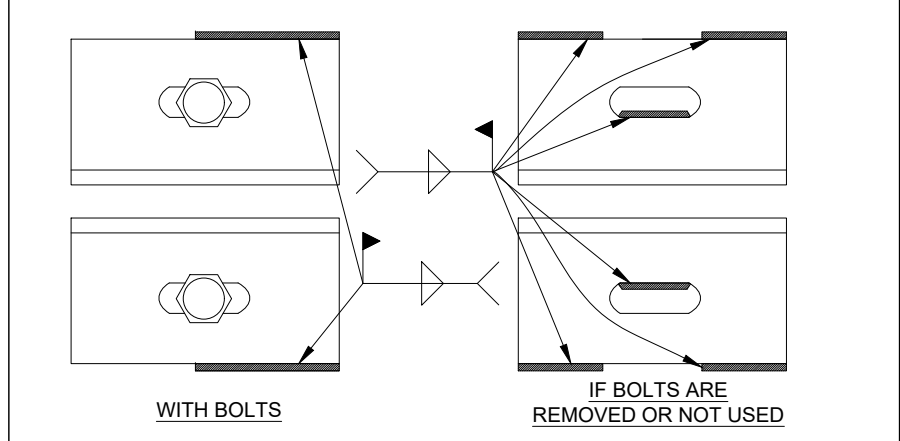
* SOMETIMES THE DESIGNS FOR THE JOIST BEARING SEATS MAY REQUIRE WIDER SEAT MATERIAL THAN THE MINIMUM BEARING SUPPORT WIDTHS SPECIFIED ON THIS DETAIL. THEREFORE, IT IS RECOMMENDED THAT YOU CONSULT W/ CANAM PRIOR TO FABRICATION OR INSTALLATION OF JOIST BEARING SUPPORTS TO CONFIRM BEARING WIDTH REQUIREMENTS.



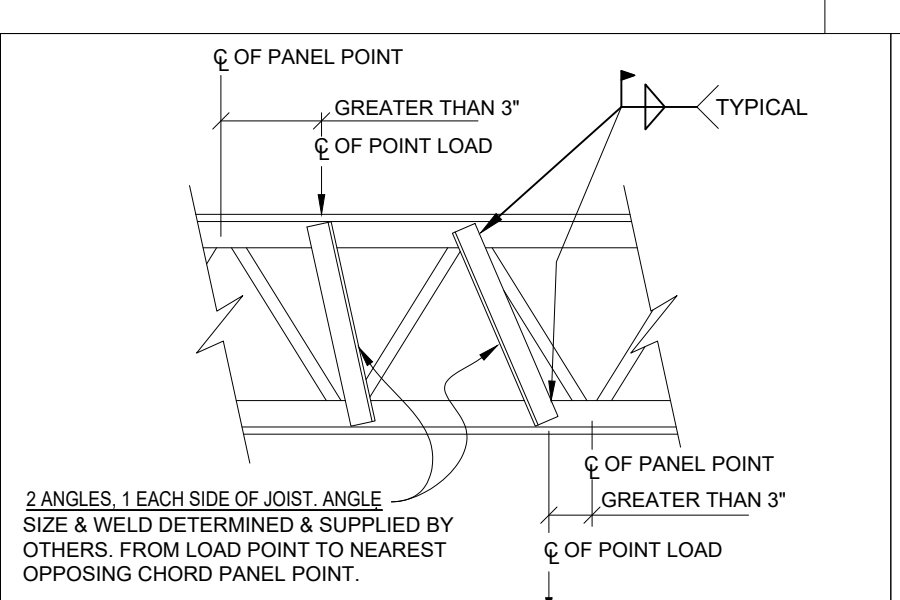
MINIMUM JOIST BEARING DETAIL

SEE THE PROJECT SPECIFIC SECTIONS WITHIN THIS SET FOR EXACT JOIST PLACEMENT. THIS SECTION CONVEYS THAT SJI MINIMUM BEARING LENGTHS AND TYPICAL WIDTH ALLOWANCES SHALL BE RESPECTED UNLESS SPECIFICALLY COORDINATED OTHERWISE WITH CANAM.

ERECTOR NOTE:
JOIST SEATS FABRICATED TO ALLOW FOR BOLTED ANCHORAGE ALSO REQUIRE A FINAL WELDED CONNECTION, BUT THE BOLTS SHALL BE INSTALLED. IF BOLTS ARE NOT INSTALLED, AND IF PERMITTED BY THE EOR, THEN THE INSIDE EDGE OF THE SEAT SLOTS MUST BE WELDED, AS SHOWN. ADDITIONAL WELD AS REQUIRED TO MEET THE TOTAL SPECIFIED SHALL BE PLACED AT A LOCATION ON THE EDGE OF THE SEAT AWAY FROM THE OUTER EDGE OF THE SLOT.

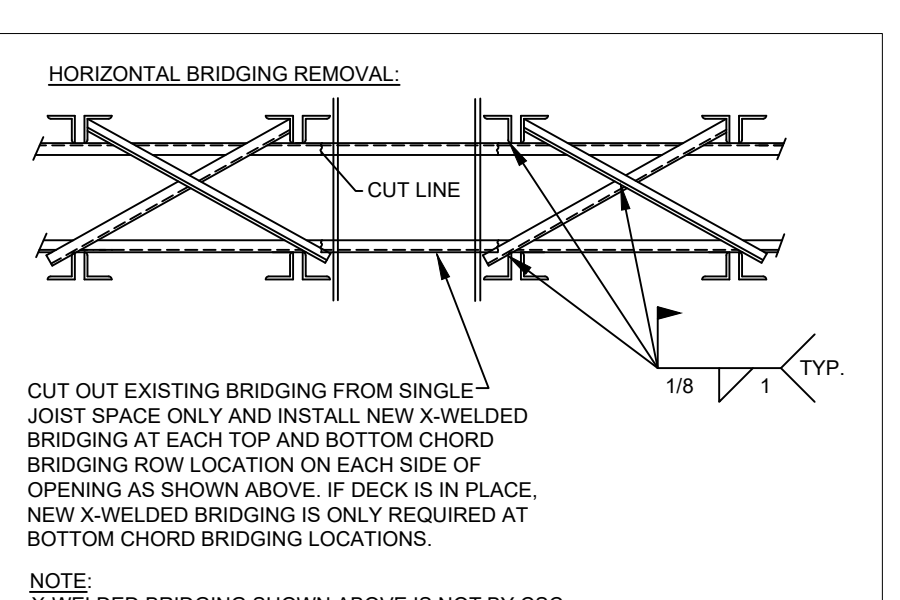


BOLTED JOIST CONNECTION DETAIL



FOR NOMINAL CONCENTRATED LOADS BETWEEN PANEL POINTS, WHICH HAVE BEEN ACCOUNTED FOR IN THE SPECIFIED UNIFORM DESIGN LOADS, A "STRUT" TO TRANSFER THE LOAD TO A PANEL POINT ON THE OPPOSITE CHORD SHALL NOT BE REQUIRED, PROVIDED THE SUM OF THE CONCENTRATED LOADS WITHIN A CHORD PANEL DOES NOT EXCEED 100 POUNDS AND THE ATTACHMENTS ARE CONCENTRIC TO THE CHORD.

TYPICAL INSTALLATION DETAIL FOR: JOIST REINFORCEMENT AT CONCENTRATED LOADS
REFERENCE: 2/S-503



BOLTED X-BRIDGING REMOVAL NOTE:
AFTER JOIST ERECTION BOLTED X-BRIDGING MAY BE REMOVED FROM A SINGLE JOIST SPACING. IF BOLTED X-BRIDGING REMOVAL IS REQUIRED IN TWO CONSECUTIVE JOIST SPACINGS CONTACT CSC ENGINEER.

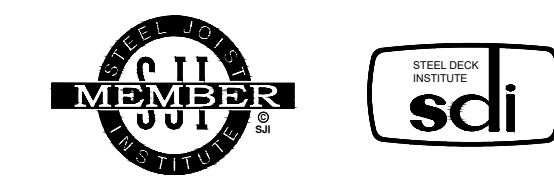
SINGLE JOIST SPACE DISCONTINUOUS BRIDGING PLACEMENT

DRAWING LEGEND	
(00'-0") = ELEVATION	TC = TOP CHORD
(B) = SEAT DEPTH (WHEN NON-STANDARD)	BC = BOTTOM CHORD
<0.00> = AXIAL LOADS	EOG = END OF GIRDER
(E) = ERECTION STABILITY BRIDGING (MUST BE IN PLACE PRIOR TO RELEASING HOISTING LINES)	EOJ = END OF JOIST
• = POINT LOAD - AMOUNT WRITTEN ABOVE THE LINE	BE = JOIST BEARING ELEVATION
• = MOMENT CONNECTION	DT = DANGER JOIST - NOT DESIGNED TO SUPPORT AN EMPLOYEE WITHOUT BRIDGING INSTALLED. SEE ERECTOR NOTES FOR ADDITIONAL INFORMATION.
* = SPECIAL USE	TJ = TIE JOIST
(C) = DENOTES JOIST CONNECTION	TOU = TOP OF JOIST
(G) = DENOTES GIRDER CONNECTION	BOA = BACK OF ANGLE
• = INDICATES X-WELDED BRIDGING TO BE PLACED AT FIRST BOTTOM CHORD PANEL POINTS. ALL OTHER X-WELDED ROWS TO BE EQUALLY SPACED BETWEEN THE FIRST BOTTOM CHORD PANEL POINTS.	BOC = BACK OF CHANNEL
• = ELEVATION CHANGE	FOW = FACE OF WALL
• = MAY BE USED TO INDICATE BOLTED SEAT CONNECTION	FIW = INSIDE FACE OF WALL
	EJ = EXPANSION JOINT
	VF = VERIFY IN FIELD

REVISION NO.	DATE	DESCRIPTION
0	09/27/24	FOR FIELD USE

FOR FIELD USE

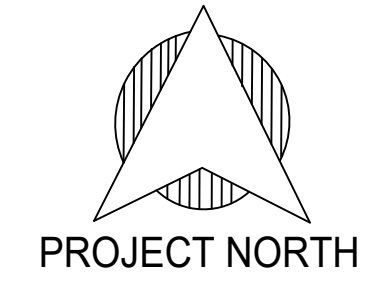
DATE SENT FOR FIELD USE: 09/27/24
DATE SENT FOR APPROVAL: 07/01/2024



CSC SMART-TRACK
"We Deliver When They Can't"
SMART-TRACK IS A NEW APPROACH TO STEEL JOIST & DECK DELIVERY. WE GIVE OUR CUSTOMERS AN OPTION TO SHORTEN STANDARD DRAWING & PRODUCTION LEAD TIMES. <https://cscsteelusa.com/what-is-csc-smart-track/>

CSC
CANAM STEEL CORPORATION

PROJECT NAME:	PROJECT EVELER FREEZER PUYALL		
LOCATION:	PUYALLUP, WA		
TITLE:	JOIST COVER SHEET		
CUSTOMER:	STEELFAB OREGON	SF#33166	
CANAM CONTACT:	MARCELINO MORQUECHO	PHONE: 240-220-4974	
PLANT:	BUCKEYE, AZ		
DRAWN BY:	AP/SND	DATE: 06/27/2024	PROJECT #
CHECKED BY:	SLM	DATE: 09/22/2024	501994
			DRAWING NO: JE1.01



ROOF JOIST FRAMING PLAN

REF. S-103

- PIECEMARKED END IS TAG END ON PLAN
- NET UPLIFT: "SEE DIAGRAM ON JE1.01"
- SEQUENCE: "SEE SEQUENCE PLAN ON JE3.01"

- HORIZONTAL BRIDGING:
 - UPLIFT BRIDGING (ROOF ONLY):
 - H2= L1 1/4"x1 1/4"x0.109
 - H3= L1 1/2"x1 1/2"x0.109
 - SEE JE1.01 FOR SECTIONS

- WELDED X-BRIDGING:
 - 400-799
 - SEE PLAN FOR MARK NO. AND LOCATION
 - SEE JE1.01 FOR SECTIONS

- BOLTED X-BRIDGING:
 - 001-399
 - SEE PLAN FOR MARK NO. AND LOCATION
 - SEE JE1.01 FOR SECTIONS

- ERECTOR STABILITY BRIDGING.
 - MUST BE INSTALLED PRIOR TO THE SLACKENING OF THE HOISTING LINES.

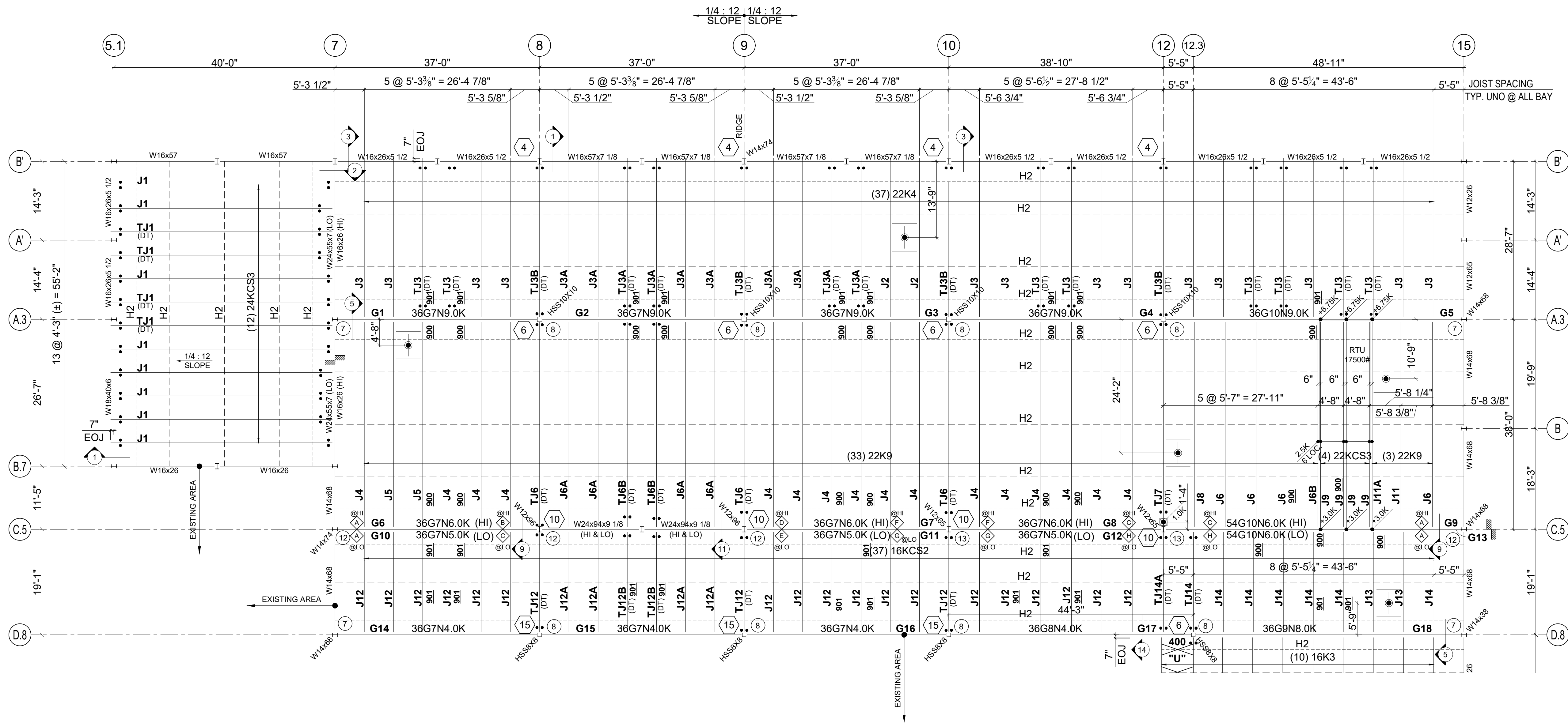
- THE JOIST SUPPORTING THE SPECIFIC LOADS AND LOCATIONS AS SHOWN ON THIS FRAMING PLAN ARE DESIGNED SUCH THAT THE JOIST REINFORCEMENT AT CONCENTRATED LOADS DETAIL ON SHEET JE1.01 IS NOT REQUIRED.

- COLUMNS = W14x53 (TYP. U.N.O.)

- 900 - 999 = KNEE BRACE

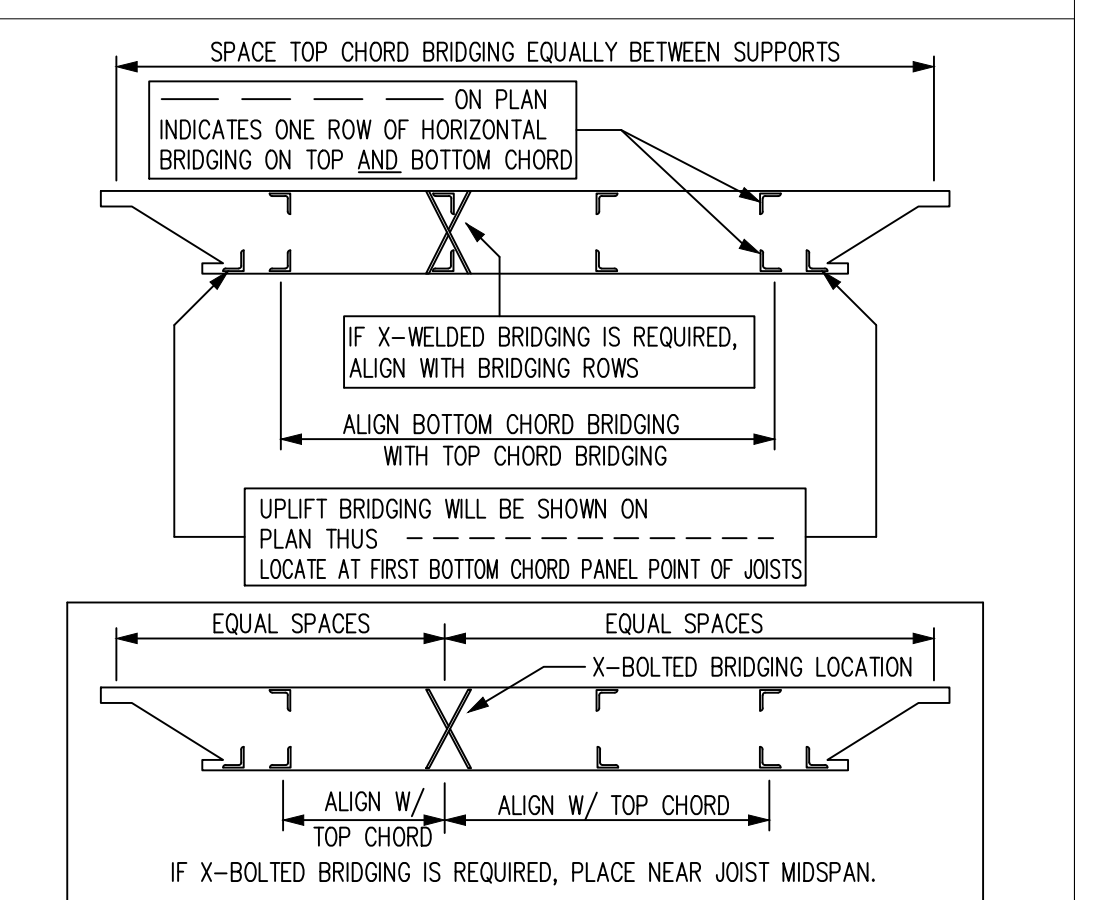
**City of Puyallup
Development & Permitting Services
ISSUED PERMIT**

Building	Planning
Engineering	Public Works
Fire	Traffic

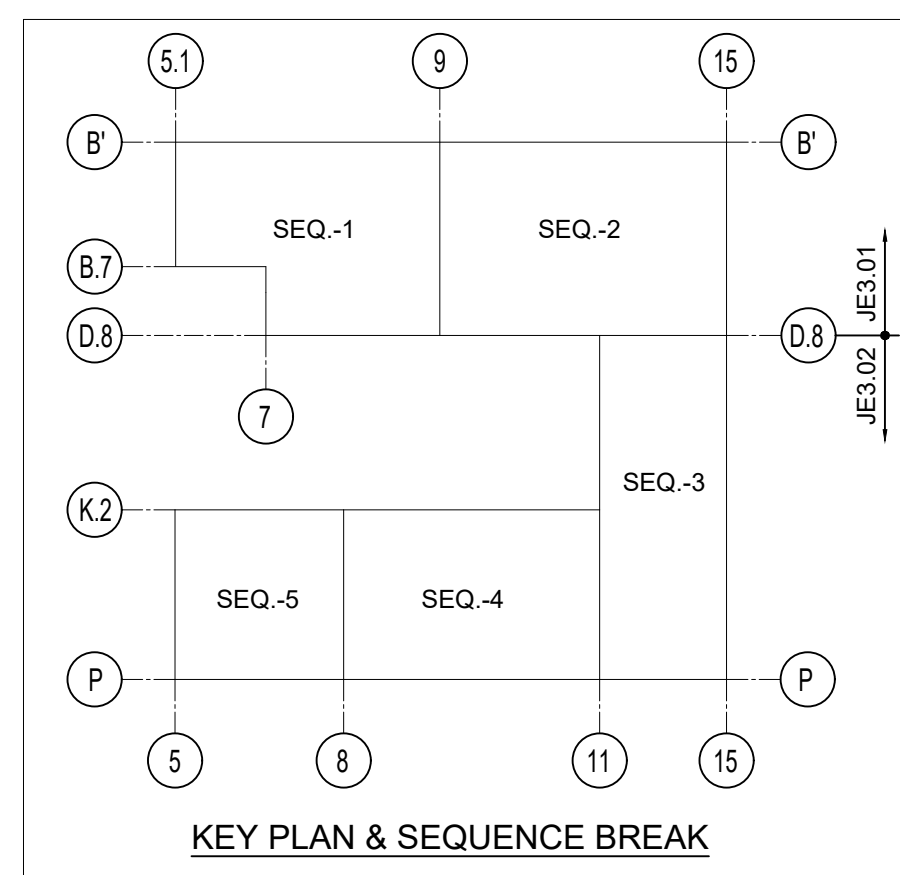


AXIAL LOAD TABLE

SYMBOL	LOAD VALUE
	3.0K (0.7E)
	11.0K (0.7E)
	17.0K (0.7E)
	38.0K (0.7E)
	57.0K (0.7E)
	27.0K (0.7E)
	40.0K (0.7E)
	23.0K (0.7E)



NOTE: BRIDGING ROW QUANTITIES WILL VARY. (SEE JOIST ERECTION PLANS FOR BRIDGING ROW REQUIREMENTS.) N.T.S.



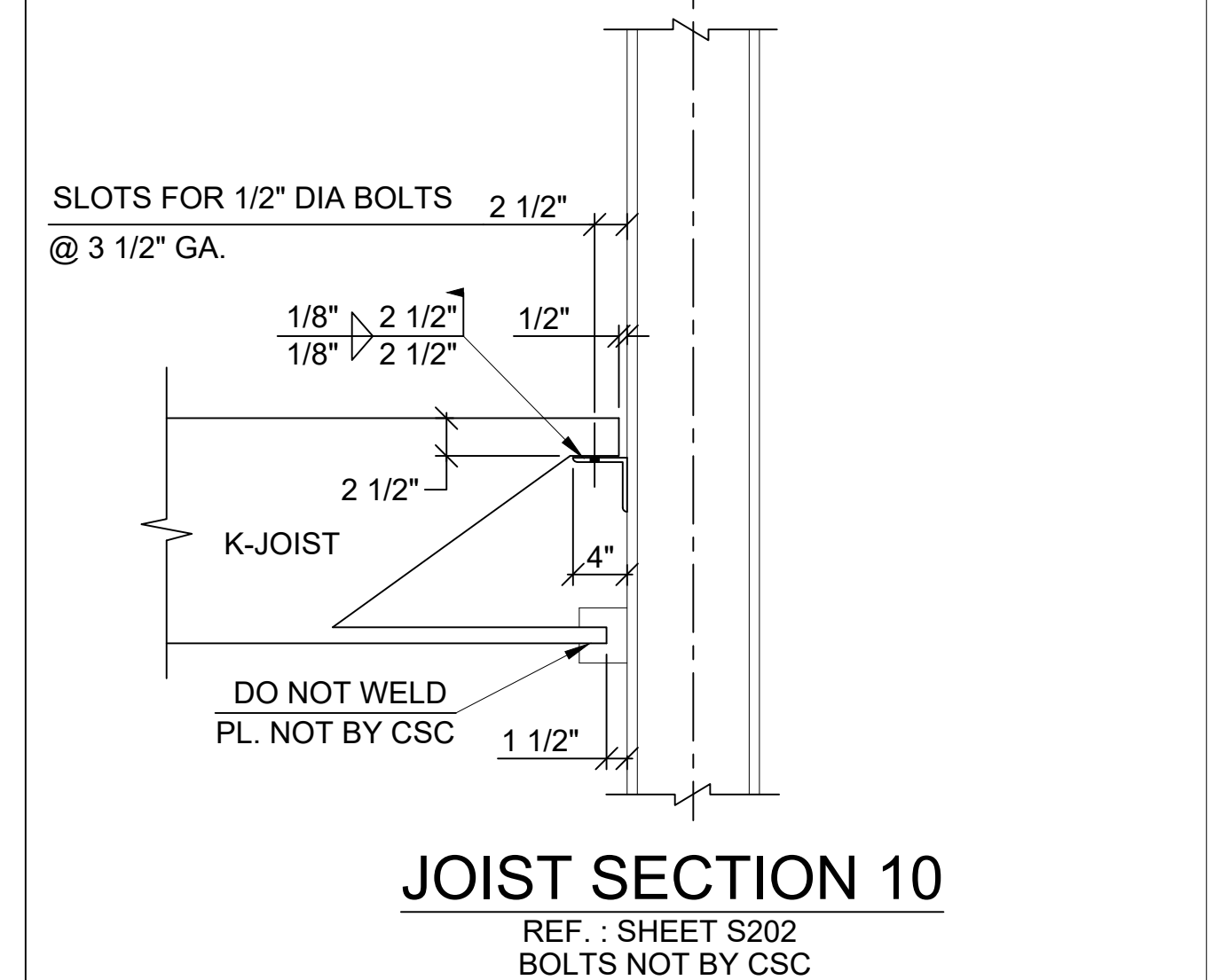
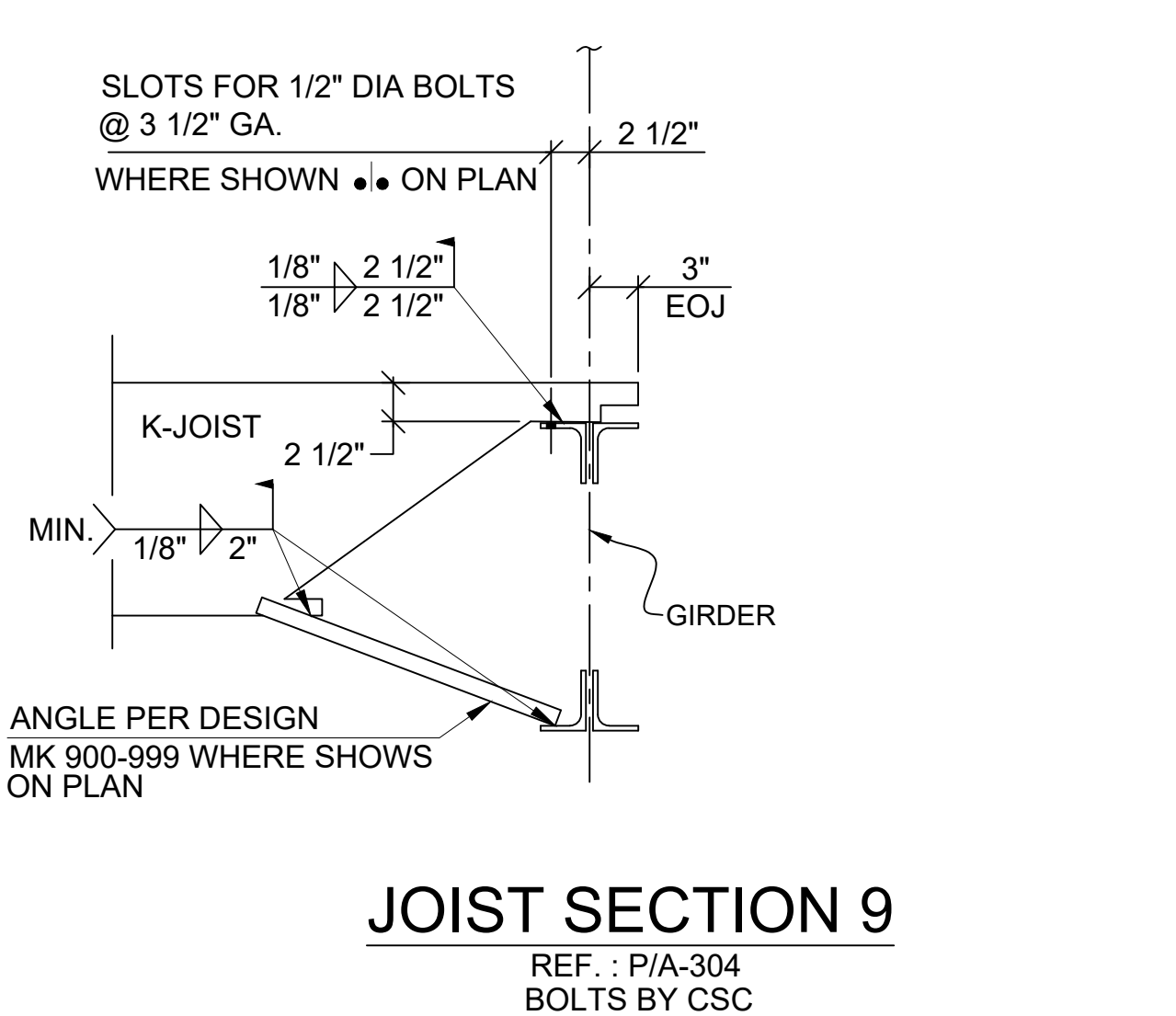
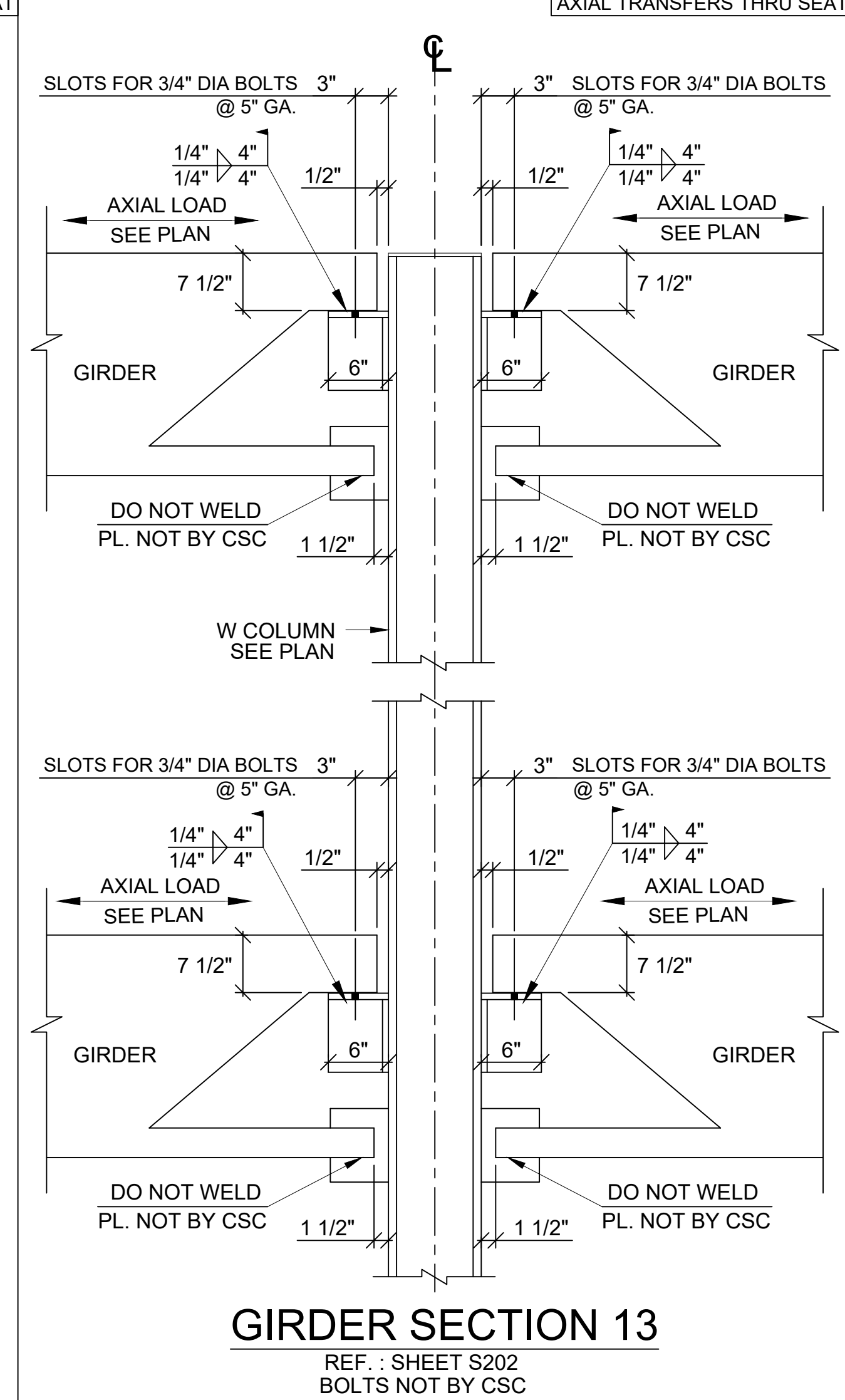
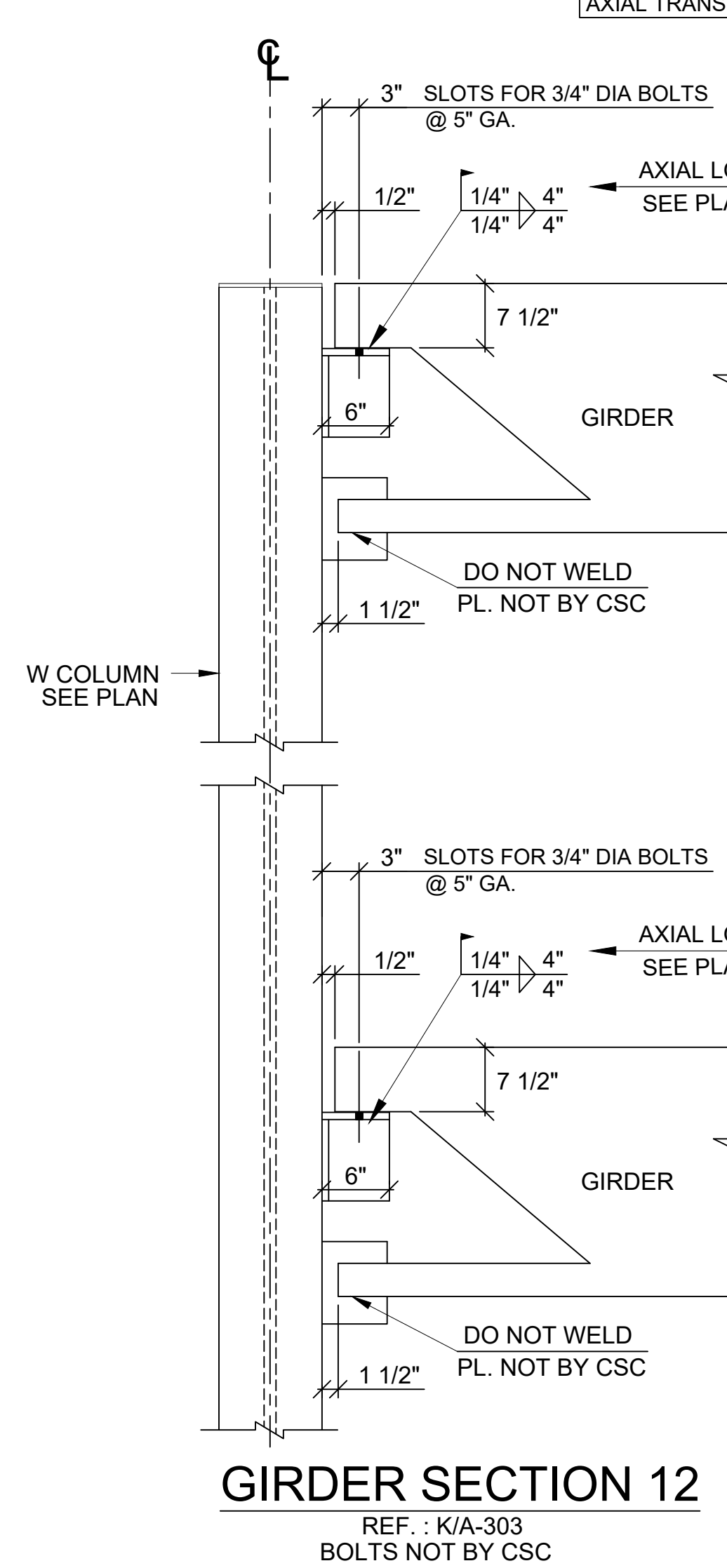
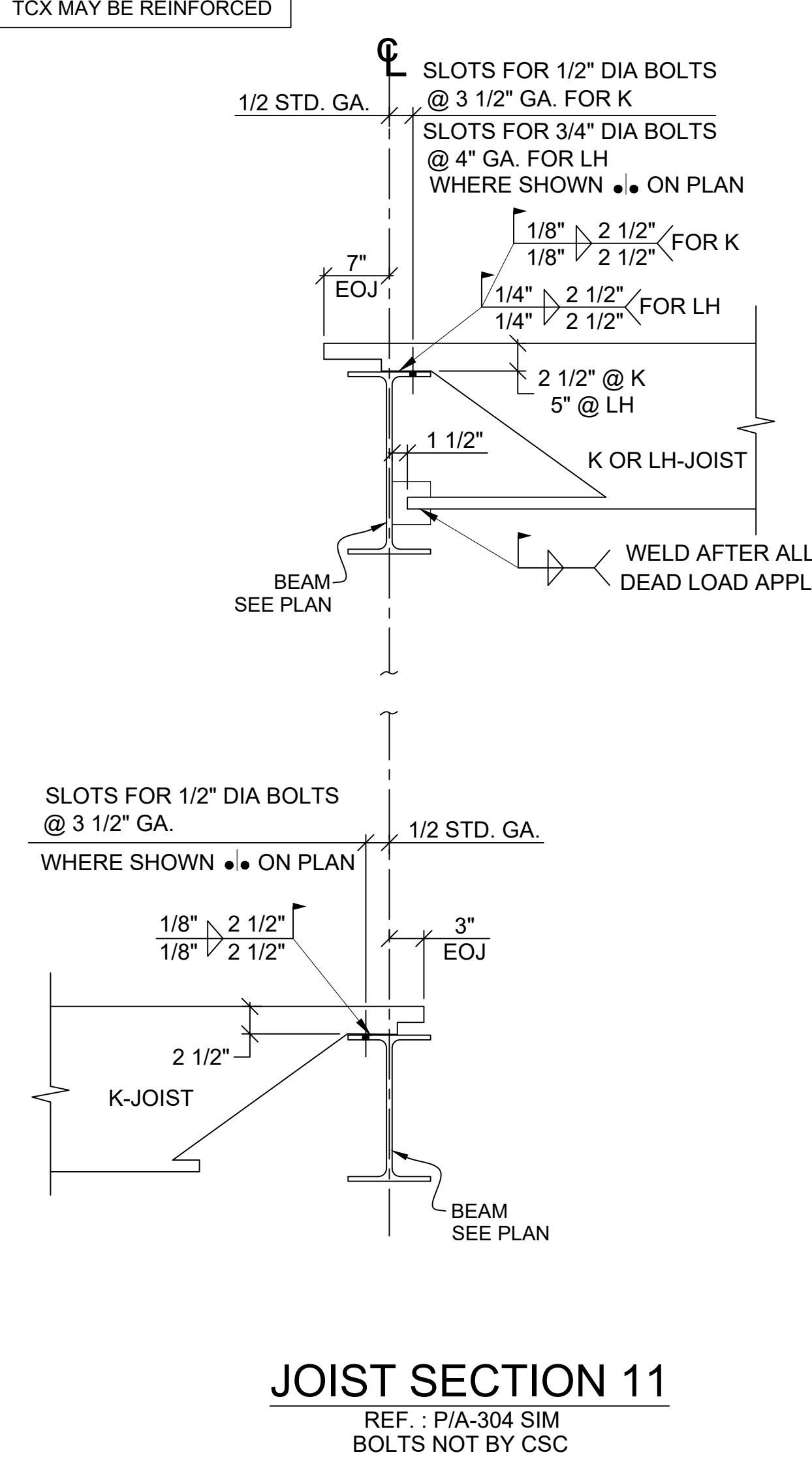
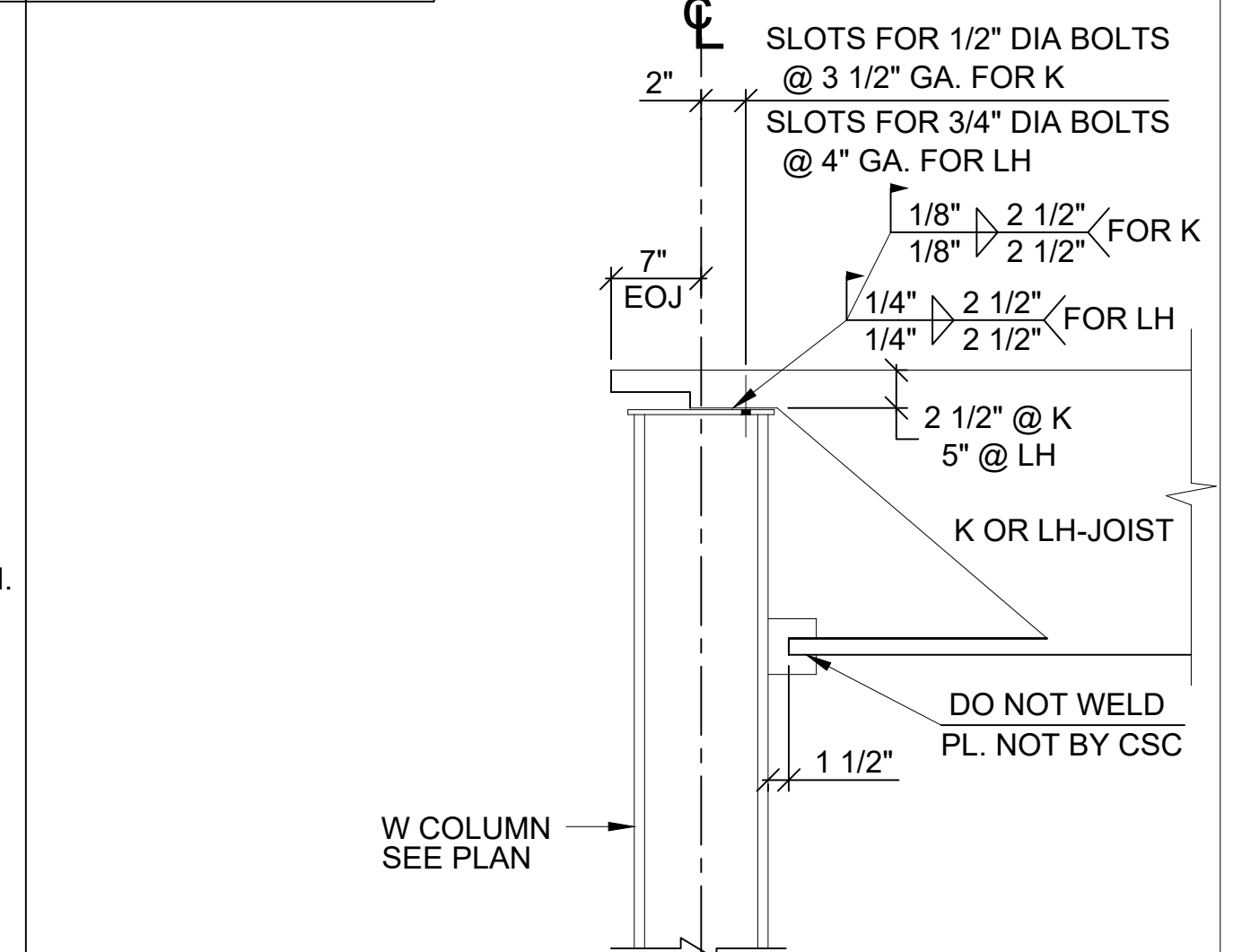
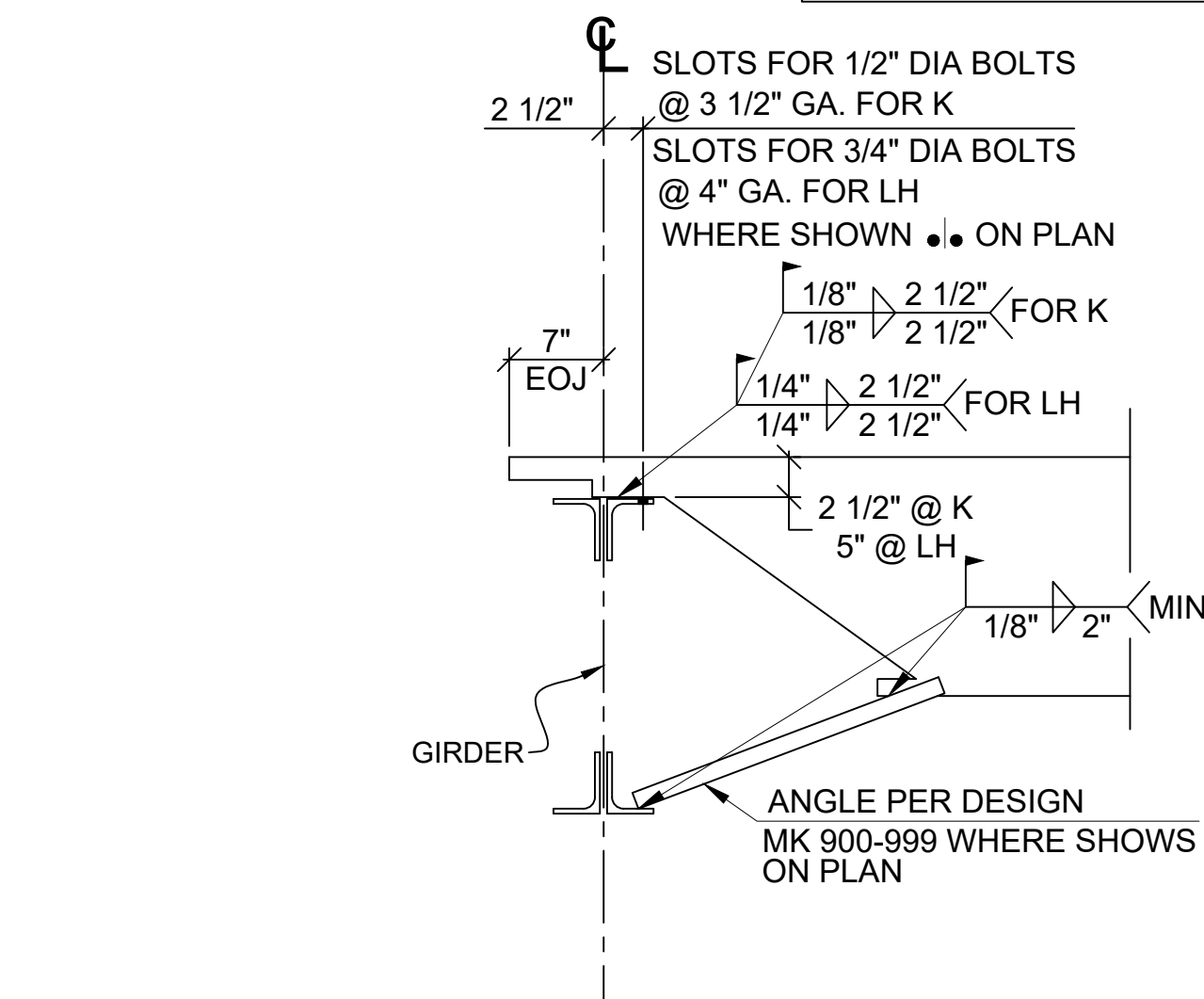
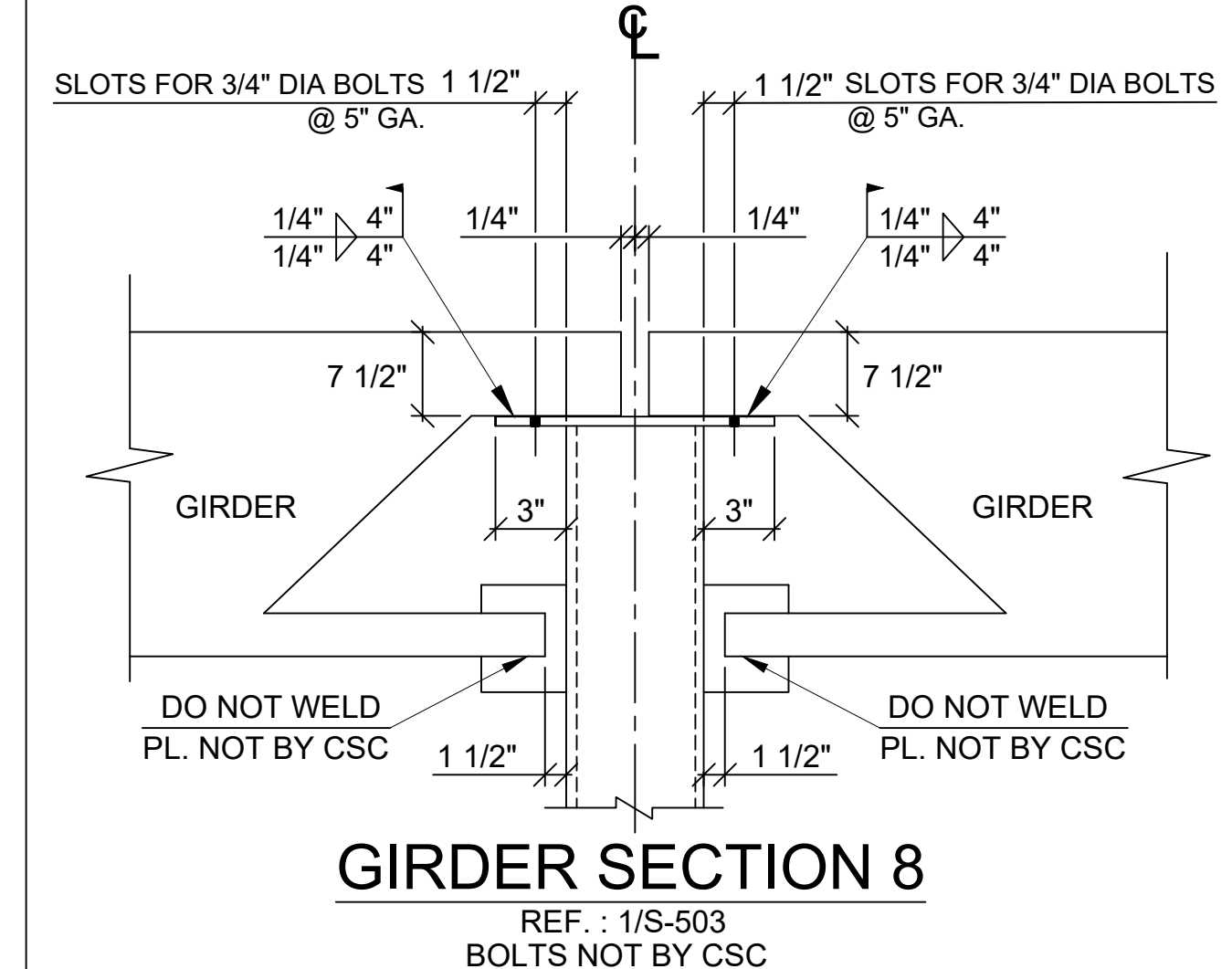
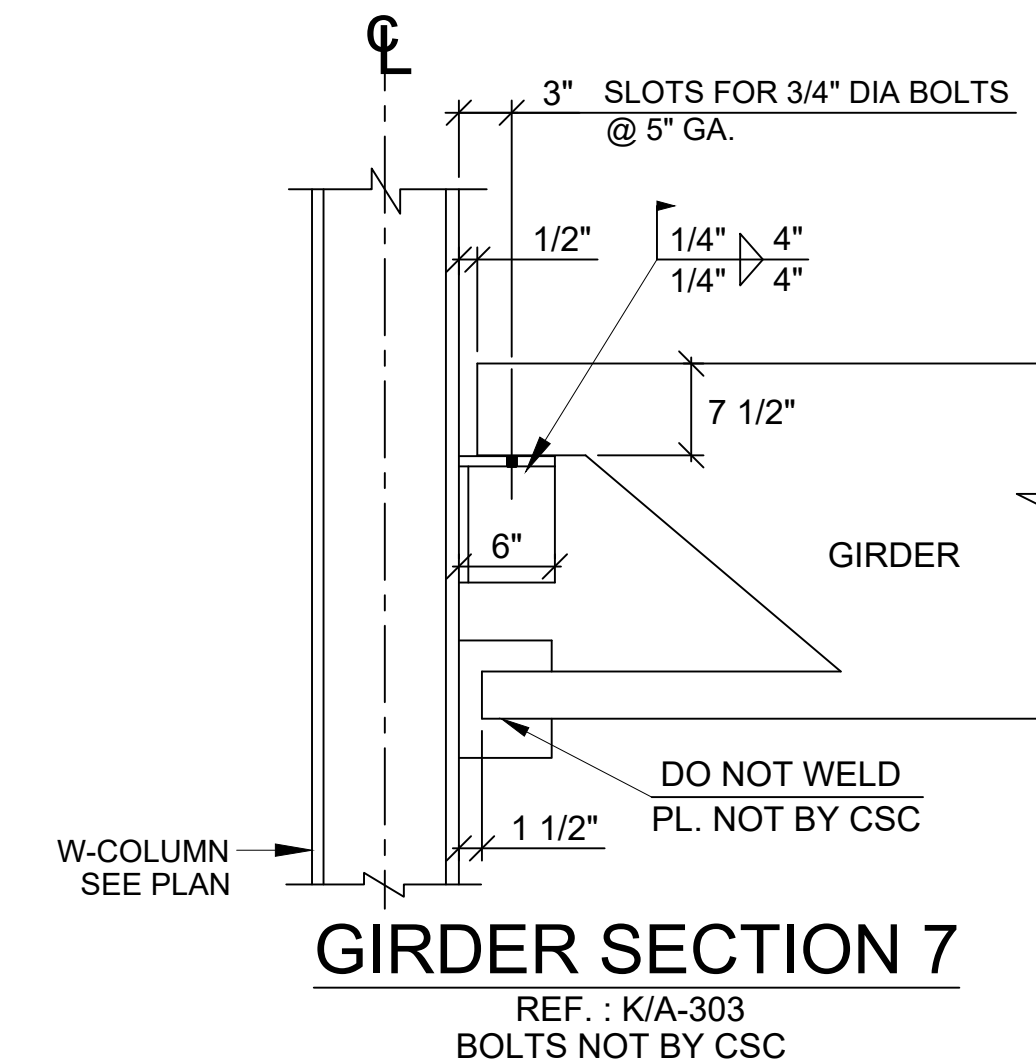
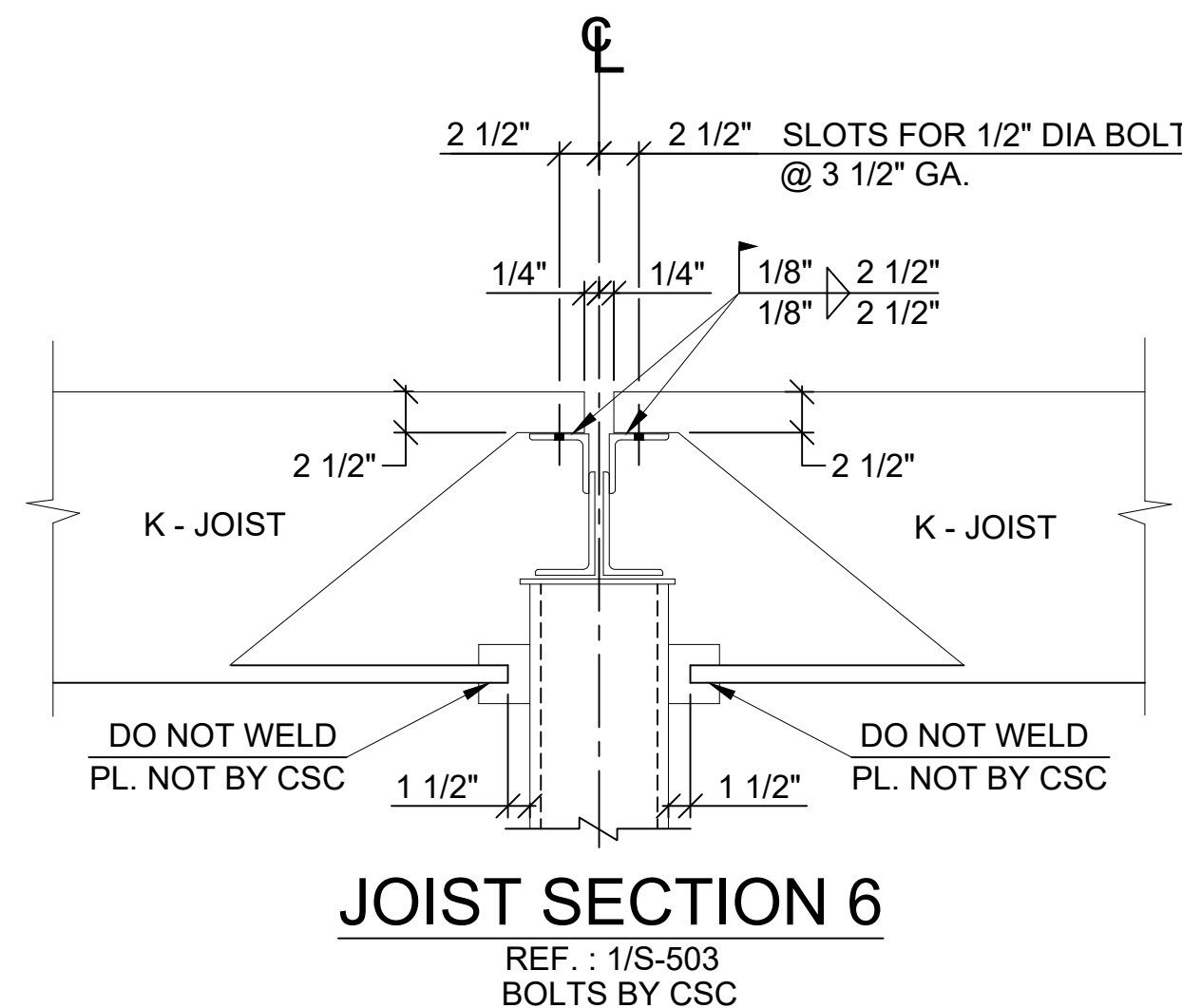
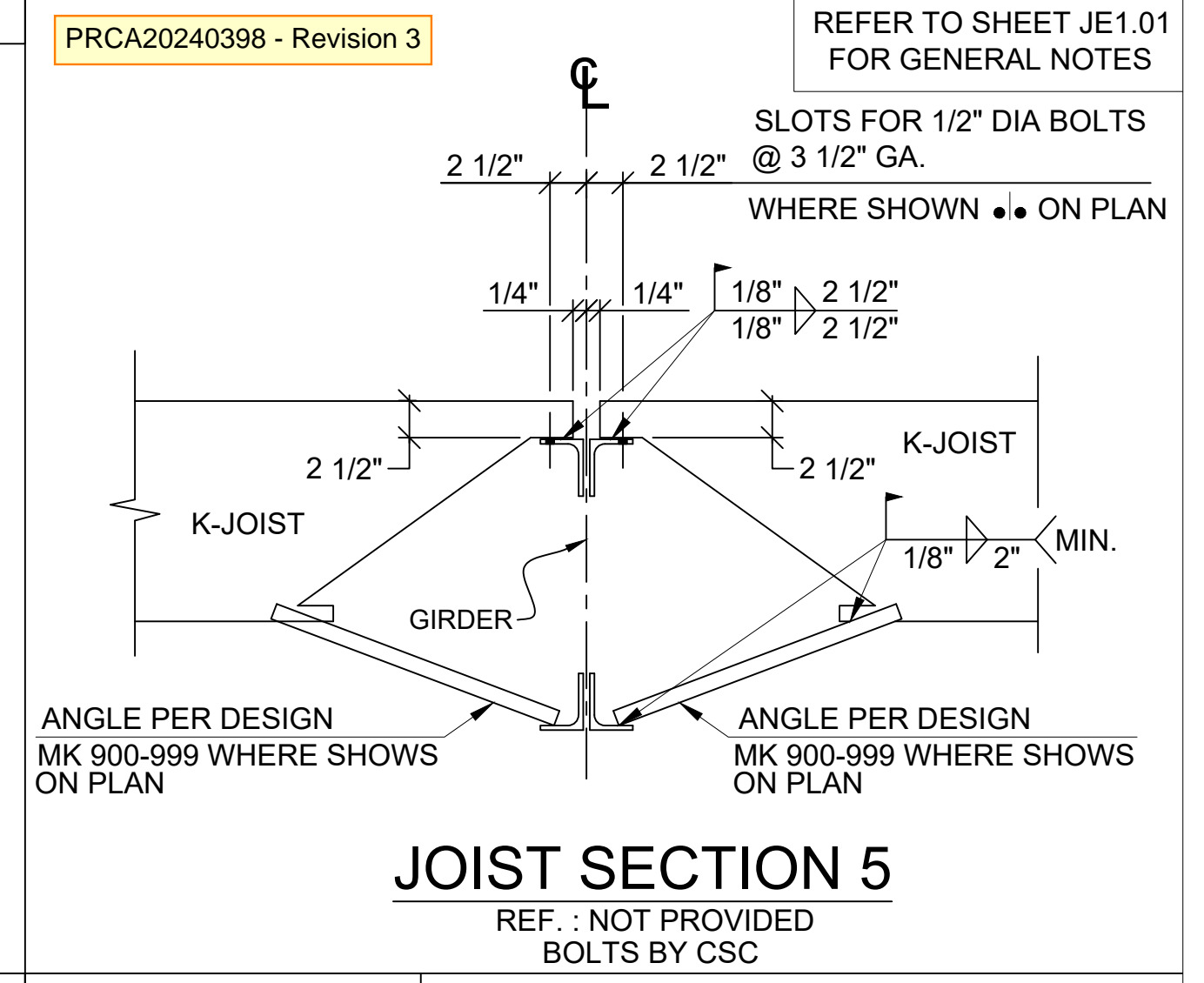
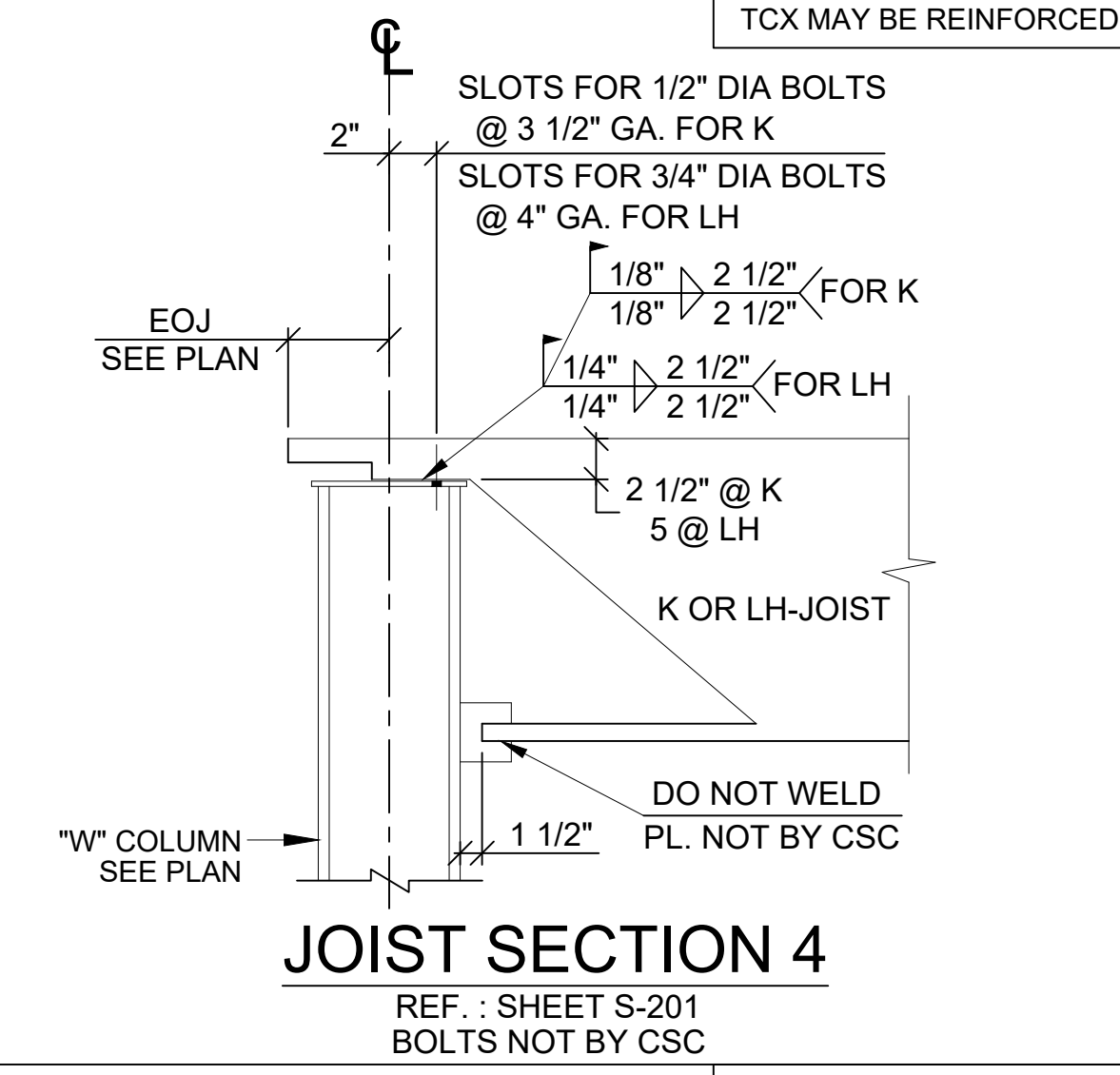
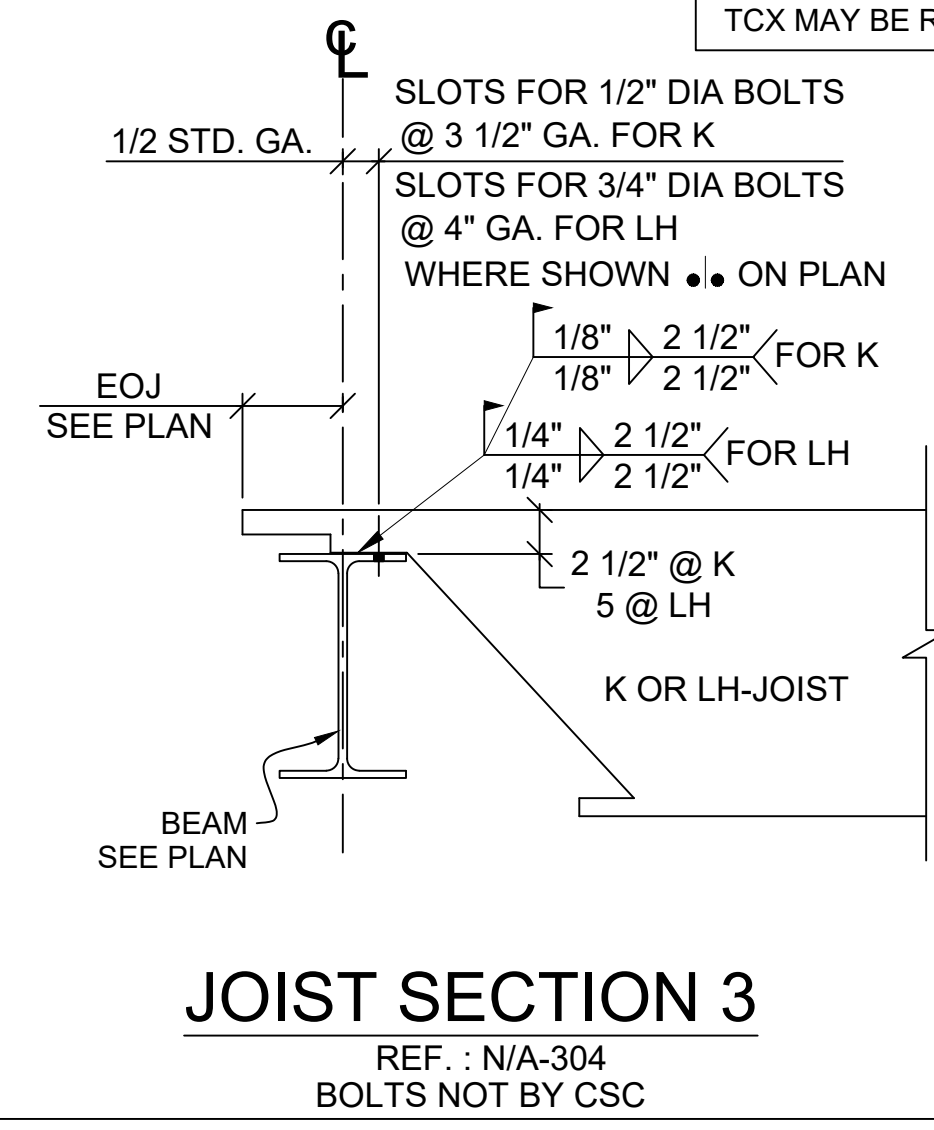
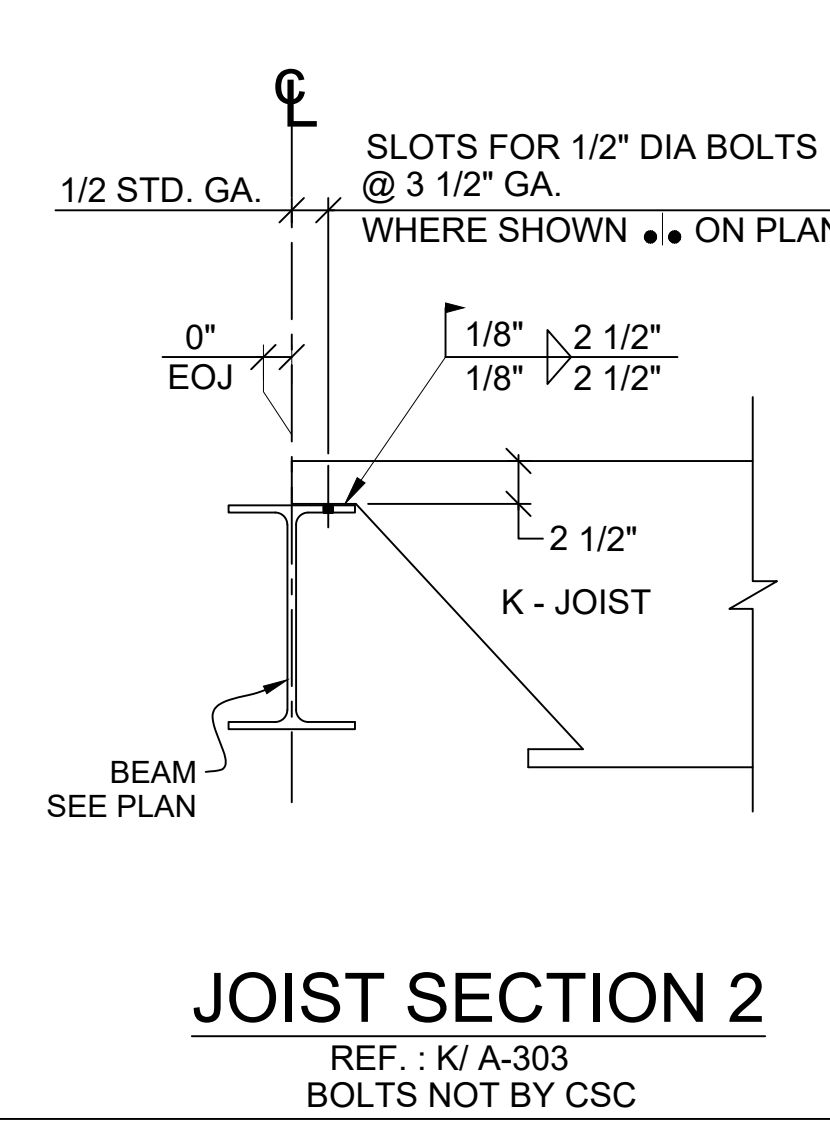
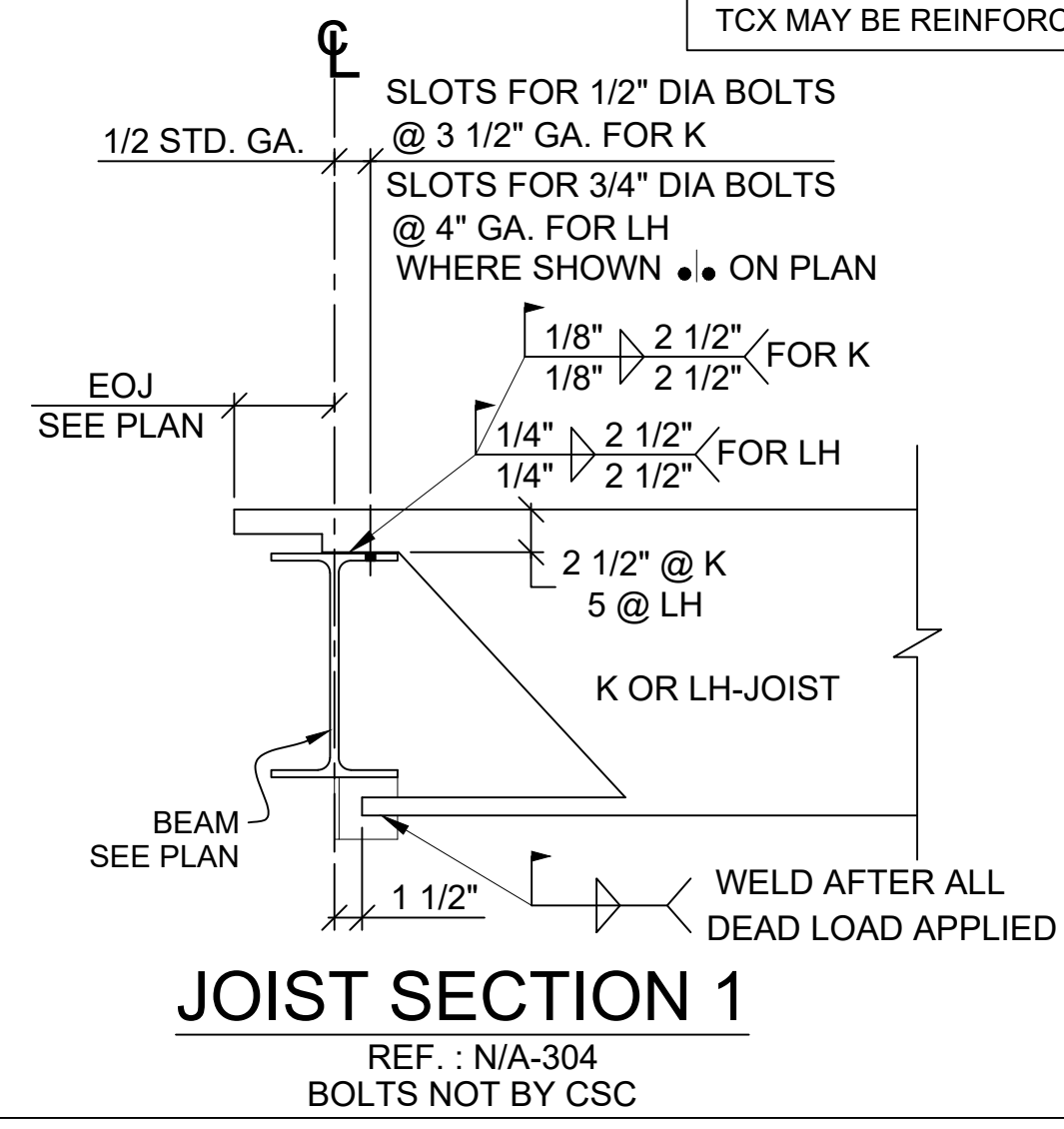
FOR FIELD USE

CSC
CANAM STEEL CORPORATION

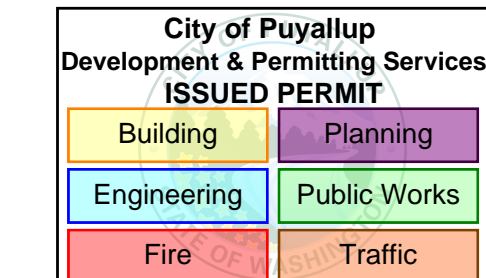
PROJECT NAME: PROJECT EVELER FREEZER PUYALL
 LOCATION: PUYALLUP, WA
 TITLE: ROOF JOIST FRAMING PLAN
 CUSTOMER: STEELFAB OREGON SF#3166
 CANAM CONTACT: MARCELINO MORQUECHO PHONE: 240-220-4974
 PLANT: BUCKEYE, AZ

DRAWN BY: AP/SND	DATE: 06/27/2024	PROJECT #:	DRAWING NO:
CHECKED BY: SLM	DATE: 09/22/2024	501994	JE3.01





Welding to be completed by an individual or fabricator who is WABO certified or approved by the Building Official to perform the work. All welds must be inspected and approved by a WABO certified special inspector.



REVISION NO.	DATE	DESCRIPTION
0	09/27/24	FOR FIELD USE



PROJECT NAME: PROJECT EVELER FREEZER PUYALL

LOCATION: PUYALLUP, WA

TITLE: JOIST SECTIONS

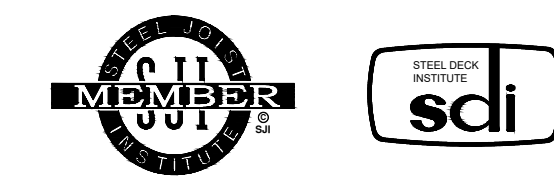
CUSTOMER: STEELFAB OREGON SF#33166

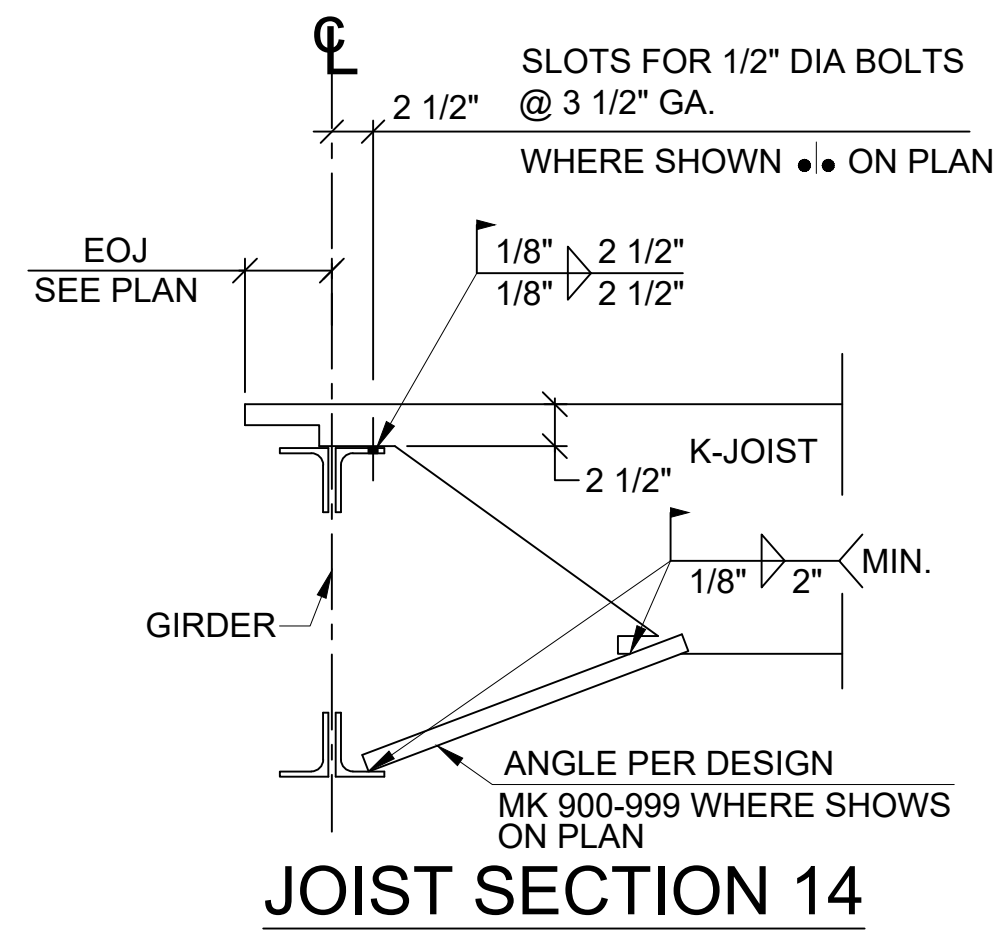
CANAM CONTACT: MARCELINO MORQUECHO PHONE: 240-220-4974

PLANT: BUCKEYE, AZ

DRAWN BY: AP/SND	DATE: 06/27/2024	PROJECT #:	DRAWING NO:
CHECKED BY: SLM	DATE: 09/22/2024	501994	JE4.01

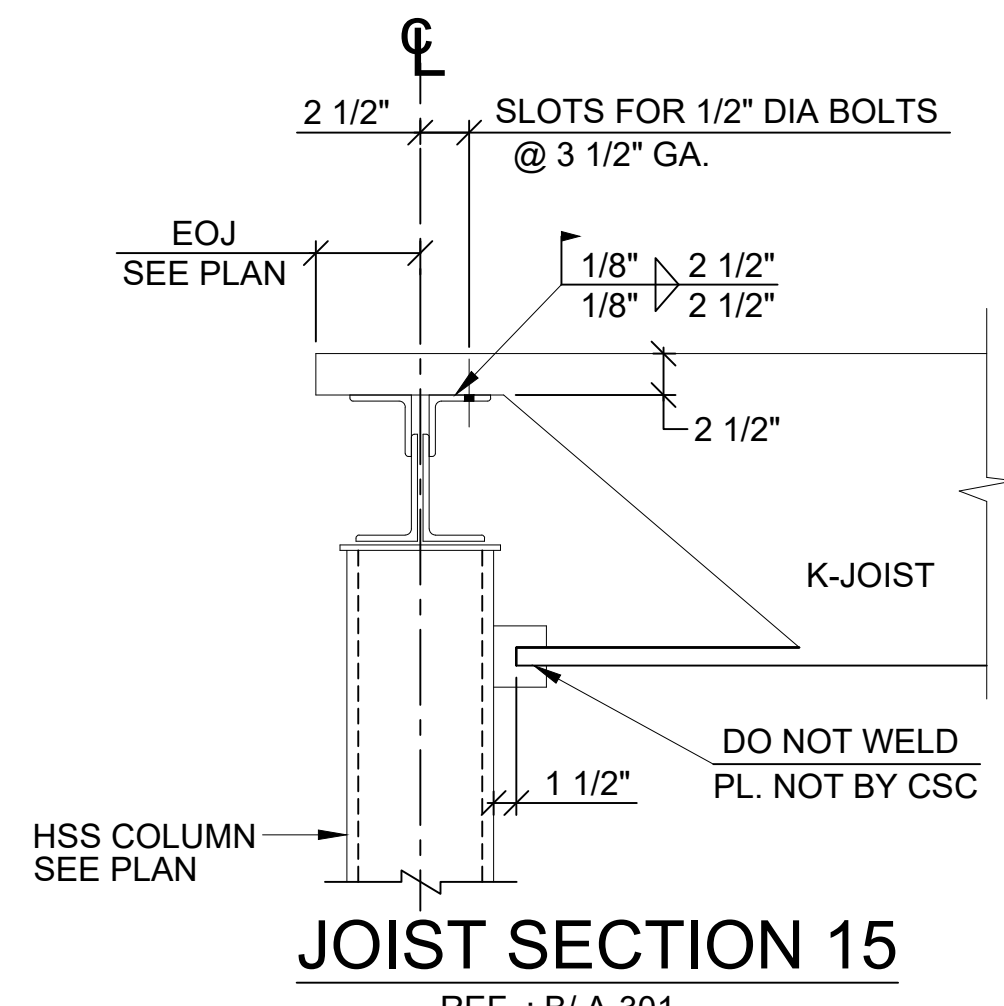
FOR FIELD USE





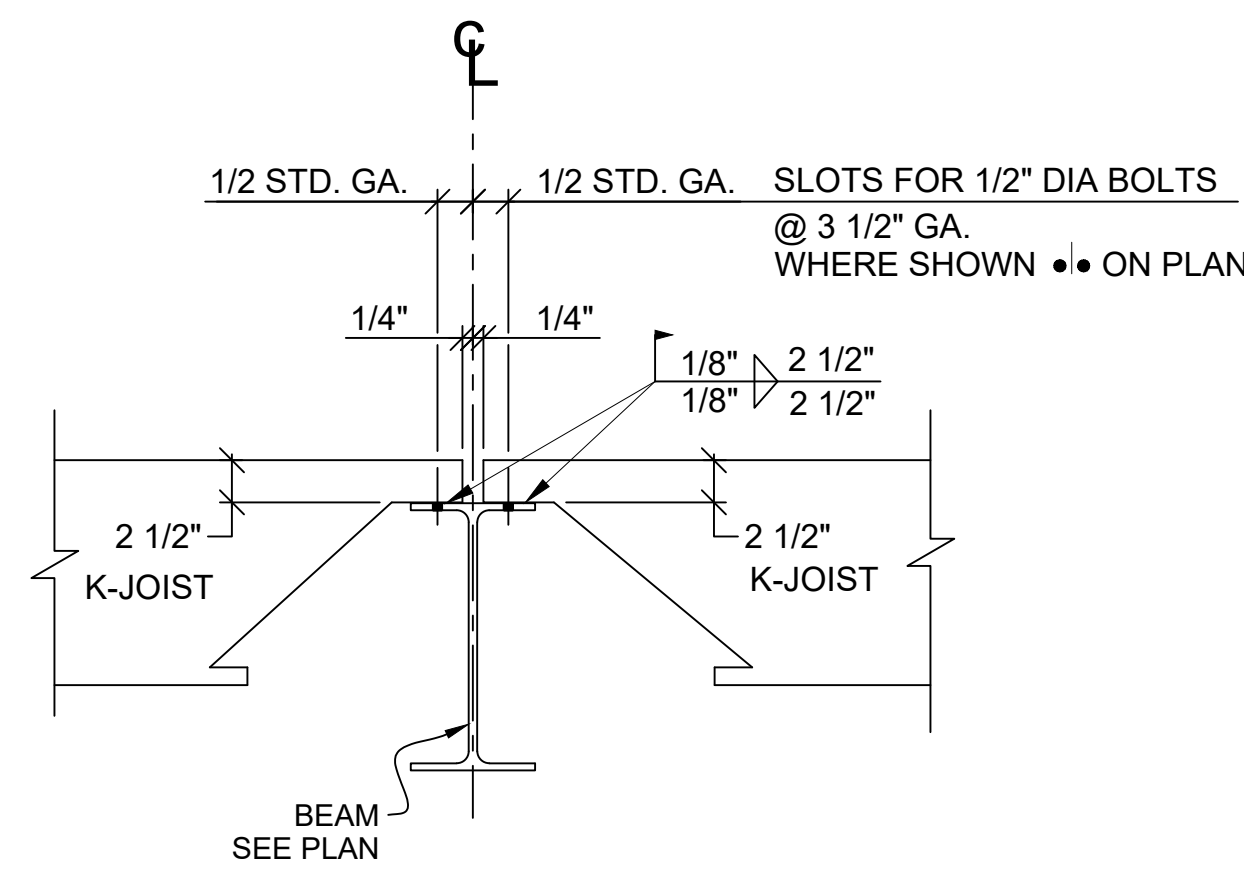
JOIST SECTION 14

REF. : NOT PROVIDED
BOLTS BY CSC



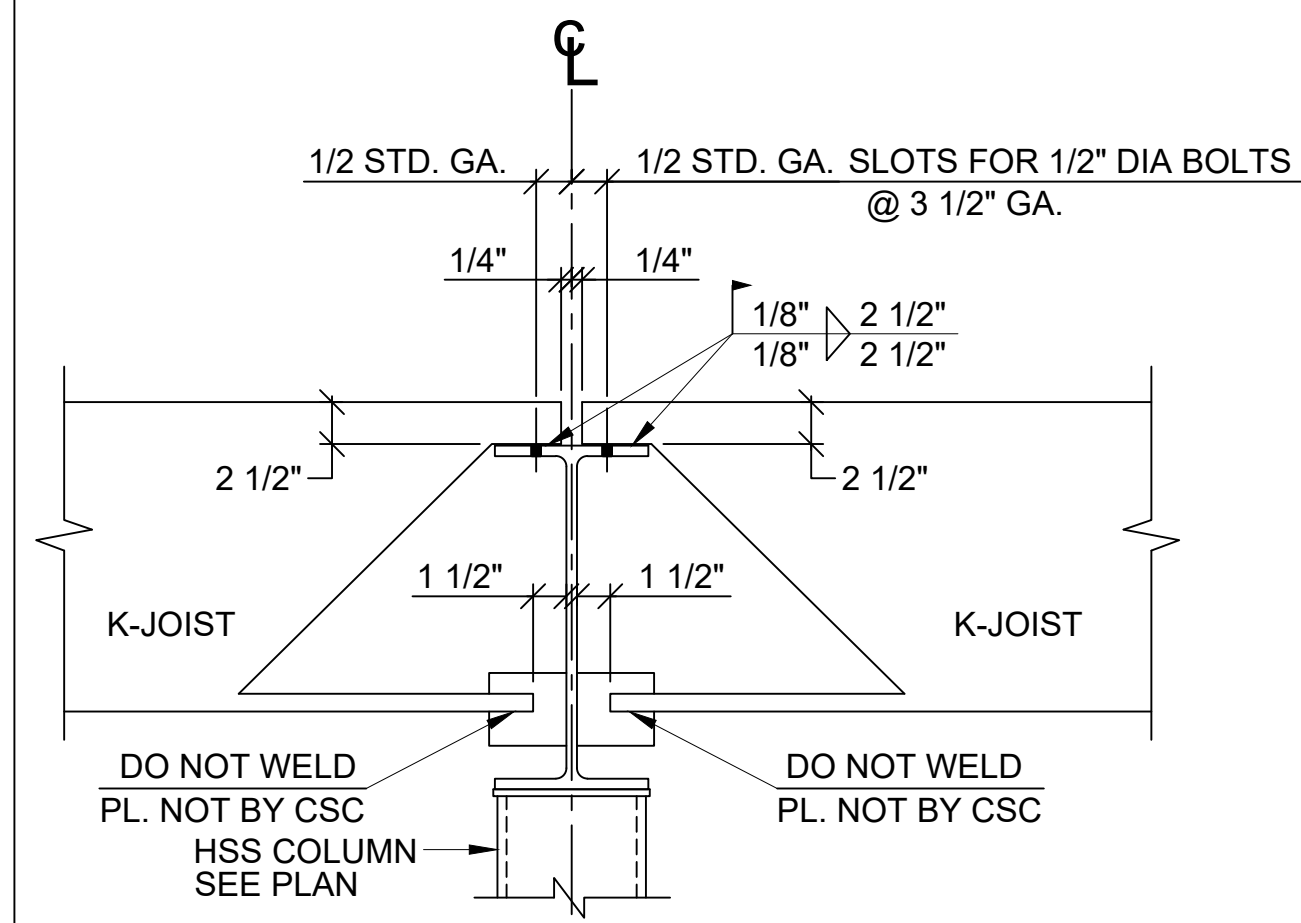
JOIST SECTION 15

REF. : B/ A-301
BOLTS BY CSC



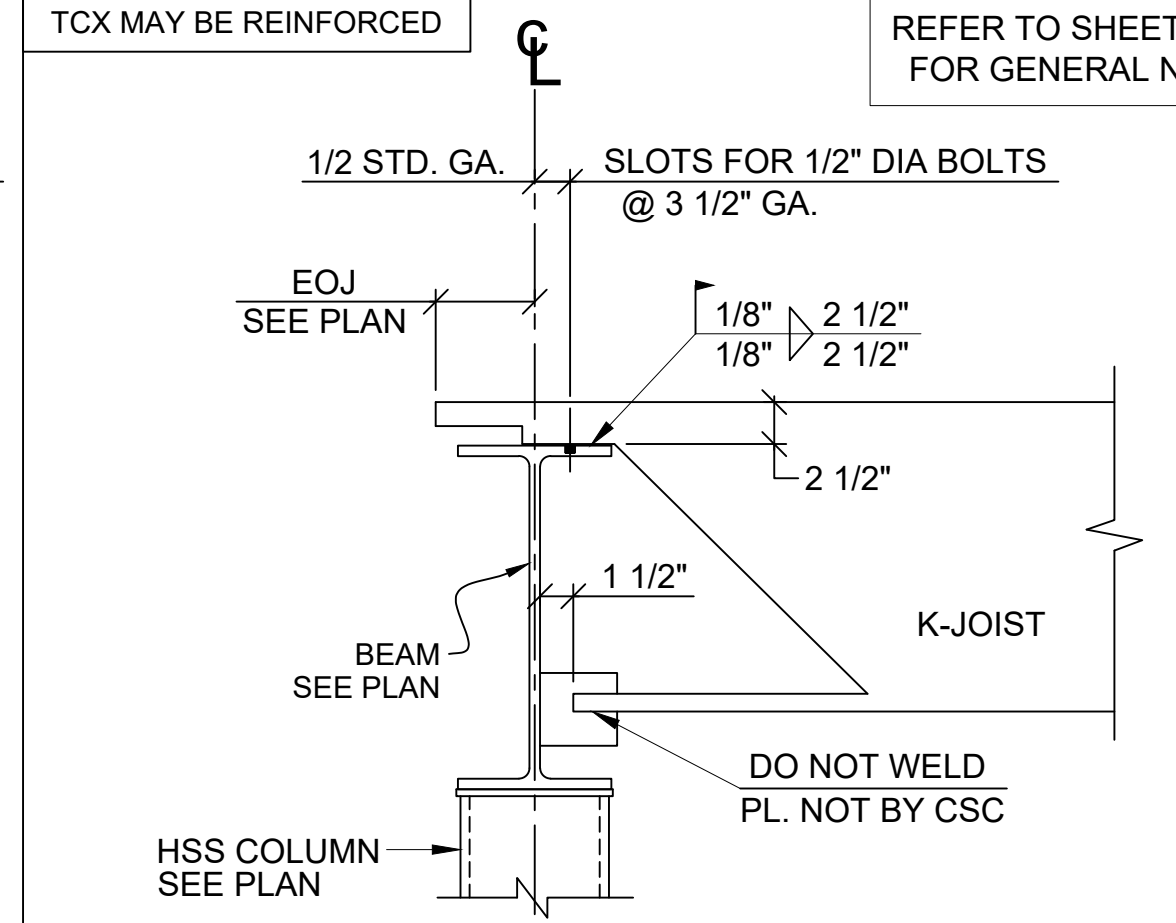
JOIST SECTION 16

REF. : NOT PROVIDED
BOLTS NOT BY CSC



JOIST SECTION 17

REF. : NOT PROVIDED
BOLTS NOT BY CSC

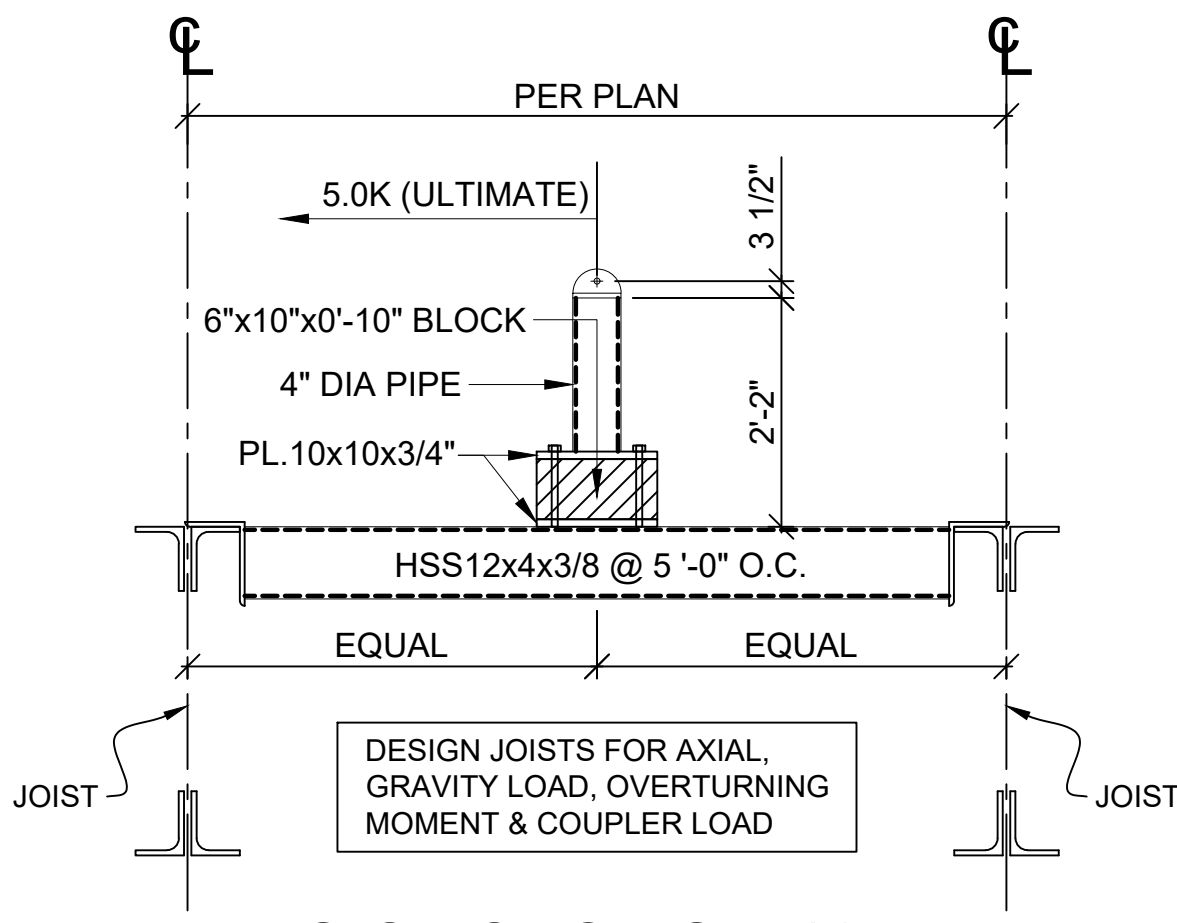


JOIST SECTION 18

REF. : NOT PROVIDED
BOLTS NOT BY CSC

TCX MAY BE REINFORCED

REFER TO SHEET JE1.01
FOR GENERAL NOTES



JOIST SECTION 19

REF. : 4/S-503
STUDS NOT BY CSC

PRCA20240398 - Revision 3

City of Puyallup
Development & Permitting Services
ISSUED PERMIT

Building	Planning
Engineering	Public Works
Fire	Traffic

REVISION NO.	DATE	DESCRIPTION
0	09/27/24	FOR FIELD USE



FOR FIELD USE

PROJECT NAME: PROJECT EVELER FREEZER PUYALL

LOCATION: PUYALLUP, WA

TITLE: JOIST SECTIONS

CUSTOMER: STEELFAB OREGON SF#33166

CANAM CONTACT: MARCELINO MORQUECHO PHONE: 240-220-4974

PLANT: BUCKEYE, AZ

DATE SENT FOR FIELD USE: 09/27/24
DATE SENT FOR APPROVAL: 07/01/2024



DRAWN BY: AP/SND	DATE: 06/27/2024	PROJECT #:	DRAWING NO.:
CHECKED BY: SLM	DATE: 09/22/2024	501994	JE4.02