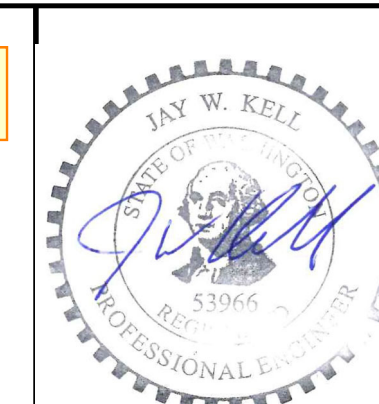
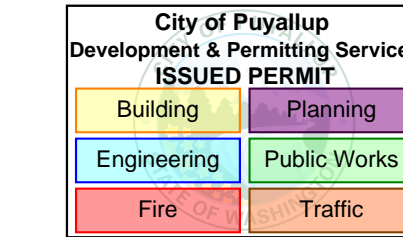


PENTHOUSE UNIT SCHEDULE

AIR UNIT NO.	PENTHOUSE NO.	ROOM NAME	MANUFACTURER	MODEL	SERIAL #	QTY.	REFRIGERANT	TR	TD	AIR FLOW (CFM)	AIR VELOCITY	COIL VOLUME FT ³ EACH	REFRIGERANT CHARGE	EXTERNAL STATIC PRESSURE	FAN MOTORS HP	DISCONNECT SIZE	TYPE OF DEFROST	COIL CONSTRUCTION	DIMENSIONS	OPERATING WEIGHT EACH(LBS.)	NOTES (SEE KEY)
AU101, AU102	PH-1	-10°F FREEZER	COILMAC	A+P2X23T-34-88-124.0C-0500L-CDX-GG-UD	TBD	2 EACH	CO2	25 EACH	-	51.142 EACH	625 FPM	-	-	0	2 @ 5HP EACH	TBD	HOT GAS	STAINLESS STEEL	268.3125"x116.4375"	17,000	1,2,3,4
AU201, AU202	PH-2	-10°F FREEZER	COILMAC	A+P2X23T-34-88-124.0C-0500L-CDX-GG-UD	TBD	2 EACH	CO2	25 EACH	-	51.142 EACH	625 FPM	-	-	0	2 @ 5HP EACH	TBD	HOT GAS	STAINLESS STEEL	268.3125"x116.4375"	17,000	1,2,3,4
AU301, AU302	PH-3	-10°F/+34°F CONVERTIBLE	COILMAC	A+P2X23T-34-112-124.0C-0500L-CDX-GG-UD-L	TBD	2 EACH	CO2	32.45 EACH	-	53.734 EACH	516 FPM	-	-	0	2 @ 5HP EACH	TBD	HOT GAS	STAINLESS STEEL	315.86"x115.68"	19,000	1,2,3,4

NOTES:
 1. UNIT TO BE PRE-WIRED TO NEMA 4 PANEL WITH OVERLOADS & COMMON NON-FUSED DISCONNECT.
 2. RECIRCULATED LIQUID / COLMAC FLOODED COIL DESIGN.
 3. FACTORY INSTALLED AMMONIA SENSOR.
 4. PH SUPPLIED WITH 30A DISCONNECT FOR 20A 208V/120V 1 PHASE 3 WIRE PLUS GROUND SERVICE PROVIDED BY E.C.

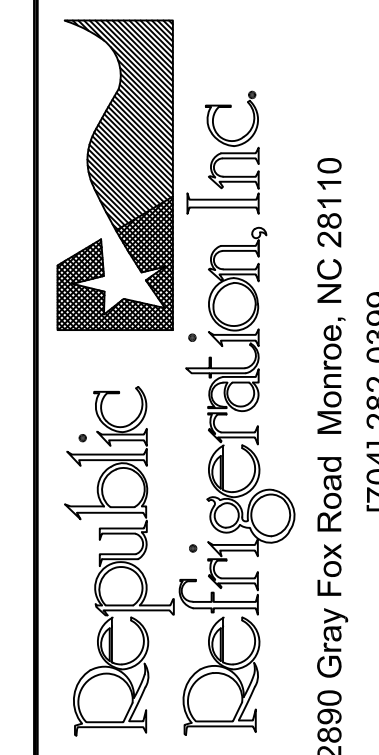
PRCA20240398
 Revision 4 - Refrigeration System



REVISIONS

NO.	DATE	DESCRIPTION	DESIGNED BY	DRAWN BY	CHECKED BY
1	7/27/24	REFRIGERATION COORDINATION SET	J. MCSWAIN	J. BLOUNT	J. MCSWAIN

SCALE: NONE
 DESIGNED BY: J. MCSWAIN
 DRAWN BY: J. BLOUNT
 CHECKED BY: J. MCSWAIN



COASTAL PACIFIC WASHINGTON

DRAWING DESCRIPTION
 REFRIGERATION EQUIPMENT SCHEDULE

DRAWING: R1
 DATE: 2/9/24
 PROJECT NO.: CR2308A

AIR UNIT SCHEDULE

AIR UNIT NO.	ROOM NAME	MANUFACTURER	MODEL	QTY.	REFRIGERANT	TR	TD	AIR FLOW (CFM)	AIR VELOCITY	COIL VOLUME FT ³ EACH	EXTERNAL STATIC PRESSURE	FAN MOTORS PER PH	TYPE OF DEFROST	COIL CONSTRUCTION	DIMENSIONS	OPERATING WEIGHT EACH(LBS.)	NOTES (SEE KEY)
AU401, AU403	+34°F DOCK	COILMAC	A+M23T-19-95-62R3.6C-EC-CDX-GG-ED-R	2	CO2	9.3	-	12.485	506 FPM	-	0	2 @ 1 HP	HOT GAS	S.S. COIL/ALUMINUM FIN	129.125"Lx43.375"Wx47.125"T	1600	1, 2
AU402, AU404	+34°F DOCK	COILMAC	A+M23T-19-95-62R3.6C-EC-CDX-GG-ED-L	2	CO2	9.3	-	12.485	506 FPM	-	0	2 @ 1 HP	HOT GAS	S.S. COIL/ALUMINUM FIN	129.125"Lx43.375"Wx47.125"T	1600	1, 2

NOTES:
 1. UNIT TO BE PRE-WIRED TO NEMA 4 PANEL WITH OVERLOADS & COMMON NON-FUSED DISCONNECT.
 2. UNIT EQUIPPED WITH REHEAT

M&M CARNOT TRANSCRITICAL CO2 PACKAGE

NO.	DUTY	QTY.	REFRIGERANT	M&M CARNOT CHILLER MODEL NO.	CAPACITY		ELECTRICAL DATA 460/3/60			OPERATING WEIGHT (LBS)	DIMENSION	NOTES
					-25°F SST	+18°F SST	MCA	MOP	RACK CURRENT			
-	0°F FREEZER /+34°F DOCK	1	CO2	E0147-1-1	191 TR	67 TR	1176.6	1330	856	50,500	464.75" L x 102" W x 110" H	1

NOTES:
 1. UNIT CONCRETE PAD TO BE PROVIDED BY OTHER.

GAS COOLER SCHEDULE

CONDENSER NO.	M&M MODEL	QTY.	MBH @ 95° CONDENSING, 80° WET BULB	AIR FLOW (CFM)	FAN MOTORS (460/3/60)	PUMP MOTORS (460/3/60)	PAN HEATERS (460/3/60)	OPERATING WEIGHT	NOTES (SEE KEY)
GC-1		1			HP	HP	KW		1,2,3

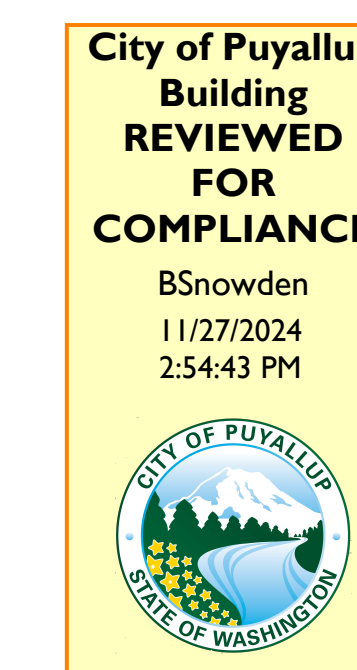
NOTES:
 1. PROVIDE WITH EXTERNAL SERVICE PLATFORM WITH LADDER AND SAFETY CAGE.
 2. INTERGAL SUMP OPERATION WITH ADJUSTABLE STAND PIPE.
 3. INVERTER DUTY MOTORS SUPPLIED ON FAN MOTORS.

PUMP SCHEDULE

PUMP NO.	DUTY	MANUFACTURER	MODEL	SERIAL #	QTY.	FLOW (GPM)	DIFFERENTIAL (FT)	MOTORS (460V/3/60Hz)	SPEED (RPM)	IMPELLER DIAMETER	CONNECTIONS		NOTES
											SUCTION	DISCHARGE	
GP-1	UNDERFLOOR GLYCOL	BELL & GOSSETT	E-80 2X2X0.5B		1	80	75 FT	5 HP	1800	8.75"	2"	2"	
GP-2	FORCED AIR GLYCOL	BELL & GOSSETT	E-80 1.5X1.5X0.5B		1	35	75 FT	3 HP	1800	8.625"	1.5"	1.5"	

NOTES:
 1. EC TO PROVIDE A-L-T STARTERS AND DISCONNECTS.

[2021 Washington State Mechanical Code, section 1110.8]
 Contractor or Engineer Declaration
 The installing contractor or registered design professional of record shall issue a certificate of test to the code official for all systems containing 55 pounds (25 kg) or more of refrigerant. The certificate shall give the test date, name of the refrigerant, test medium and the field test pressure applied to the high-pressure side and the low-pressure side of the system. The certification of test shall be signed by the installing contractor or registered design professional and shall be made part of the public record.



The approved construction plans, documents, and all engineering must be posted on the job at all inspections in a visible and readily accessible location.
 Full sized legible color plans are required to be provided by the permittee on site for inspection.
 Approval of submitted plans is not an approval of omissions or oversights by this office or non compliance with any applicable regulations of local government. The contractor is responsible for making sure that the building complies with all applicable codes and regulations of the local government.

REFRIGERATION ABBREVIATIONS

DR	DEFROST RETURN
GCR	GAS COOLER RETURN
GCS	GAS COOLER SUPPLY
HGD	HOT GAS DEFROST
HG-RHR	HOT GAS REHEAT RETURN
HG-RHS	HOT GAS REHEAT SUPPLY
HLA	HIGH LEVEL ALARM
H.L.C.O.	HIGH LEVEL CUT-OUT
HPL	HIGH PRESSURE LIQUID
HSD	HIGH STAGE DISCHARGE
HSL	HIGH STAGE SUCTION
HTL	HIGH TEMPERATURE LIQUID
HTS	HIGH TEMPERATURE SUCTION
L.L.C.O.	LOW LEVEL CUT-OUT
LTL	LOW TEMPERATURE LIQUID
LTS	LOW TEMPERATURE SUCTION
L.O.V.	LOCKED OPEN VALVE
LT	LIQUID TRANSFER
MTL	MEDIUM TEMPERATURE LIQUID
MTS	MEDIUM TEMPERATURE SUCTION
O.L.	OPERATING LEVEL
PRG	PURGE LINE
RHR	REHEAT RETURN
RHS	REHEAT SUPPLY
RV	RELIEF VENT
VENT	VENT

VALVES

	- CONCENTRIC REDUCER		- DANFOSS ICF VALVE
	- ECCENTRIC REDUCER		- CHECK VALVE
	- STRAINER		- STOP/CHECK VALVE
	- ANGLE VALVE		- PILOT OPERATED CHECK VALVE (CK-2)
	- GAUGE & VALVE		- BALL VALVE
	- GLOBE VALVE		- SINGLE RELIEF
	- BUTTERFLY VALVE		- FLOAT
	- MOTORIZED BUTTERFLY VALVE		- DUAL RELIEF
	- HAND EXPANSION VALVE		- CONTROL STATION
	- SOLENOID VALVE		- PRESSURE GAUGE
	- SOLENOID VALVE w/STRAINER		- PRESSURE TRANSDUCER
	- THERMAL EXPANSION VALVE		- RELATIVE HUMIDITY SENSOR
	- REGULATOR		- TEMPERATURE SENSOR
	- REGULATOR w/SOLENOID		- UNDERFLOOR TEMPERATURE SENSOR
	- REGULATOR w/GAUGE		
	- REGULATOR w/SOLENOID & GAUGE		
	- PILOT OPERATED VALVE		

INSULATION THICKNESS SCHEDULE

PIPE SIZES	DYPLAST POLYISOCYANURATE											
	OUTSIDE & INSIDE AREAS ABOVE 20°F					INSIDE BELOW 20°F						
	-50°F TO -1°F PIPE	ACTUAL BLOCK	TOTAL DIA.	0°F TO 50°F PIPE	ACTUAL BLOCK	TOTAL DIA.	ALL PIPE TEMPS	ACTUAL BLOCK	TOTAL DIA.	HOT GAS AND DRAIN LINES	ACTUAL BLOCK	TOTAL DIA.
VESSLS	4"			3"			N/A					
14" PIPE	3-1/2"	3-1/16"	21"	2-1/2"	2-1/16"	19"	2"	2-3/16"	19"			
12" PIPE	3-1/2"	3-1/16"	20"	2-1/2"	2-1/16"	18"	2"	2-5/16"	17"			
10" PIPE	3-1/2"	3-1/16"	18"	2-1/2"	2-1/16"	16"	2"	2-5/16"	15"	1-1/2"	1-1/16"	14"
8" PIPE	3-1/2"	3/8"	16"	2-1/2"	2-1/16"	14"	2"	2-1/4"	12-3/4"	1-1/2"	1-3/4"	11-3/4"
6" PIPE	3-1/2"	3/8"	14"	2-1/2"	2-1/16"	12"	2"	2-1/4"	10-3/4"	1-1/2"	1-1/16"	9-5/8"
5" PIPE	3-1/2"	3/4"	12-3/4"	2-1/2"	2-1/16"	10-3/4"	2"	2-3/16"	9-5/8"	1-1/2"	1-3/4"	8-5/8"
4" PIPE	3-1/2"	3-1/16"	11-3/4"	2-1/2"	2-1/16"	9-5/8"	2"	2-1/4"	8-5/8"	1-1/2"	1-3/4"	7-5/8"
3" PIPE	3-1/2"	3-1/16"	10-3/4"	2-1/2"	2-1/16"	8-5/8"	2"	2-1/4"	7-5/8"	1-1/2"	1-3/4"	6-5/8"
2-1/2" PIPE	3-1/2"	3-15/16"	10-3/4"	2-1/2"	3-1/16"	8-5/8"	2"	2-9/16"	7-5/8"	1-1/2"	2-1/16"	6-5/8"
2" PIPE	2-1/2"	2-1/16"	7-5/8"	2"	2-5/16"	6-5/8"	2"	2-5/16"	6-5/8"	1-1/2"	1-13/16"	5-9/16"
1-1/2" PIPE	2-1/2"	2-1/16"	7-5/8"	2"	2-9/16"	6-5/8"	2"	2-9/16"	6-5/8"	1-1/2"	1-3/4"	5"
1-1/4" PIPE	2-1/2"	2-1/16"	6-5/8"	2"	2-3/16"	5-9/16"	2"	2-3/16"	5-9/16"	1-1/2"	2"	5"
1" PIPE	2-1/2"	2-1/16"	6-5/8"	2"	2-6/16"	5-9/16"	2"	2-5/16"	5-9/16"	1-1/2"	1-3/4"	4-1/2"
3/4" PIPE	2-1/2"	2-15/16"	6-5/8"	2"	2-3/16"	5"	2"	2-3/16"	5"	1-1/2"	1-11/16"	4"
1/2" PIPE	2-1/2"	2-1/16"	6-5/8"	2"	2-5/16"	4"	2"	2-5/16"	4"	1-1/2"	1-3/4"	4"

NOTES:
 1. RG2400 WILL BE USED

NOTES:

- CONSTRUCTION PER ANSI B31.5 EDITION 2019 "REFRIGERATION PIPING AND HEAT TRANSFER COMPONENTS"
- STAINLESS STEEL TUBE JOINTING: ORBITAL WELDING (GTAW) ONLY. REGISTERED DMS REQUIRED. WELDERS MUST BE QUALIFIED.
- STAINLESS STEEL TUBE: NO FITTINGS. TUBE MUST BE BENDED FOR DIRECTION CHANGE
- VISUAL INSPECTION REQUIRED BEFORE PRESSURE TESTING
- NITROGEN PRESSURE TESTING REQUIRED PER ASME B31.5 EDITION 2019 ARTICLE 538
- STAINLESS STEEL FITTINGS ASTM A403 TP304 OR TP316 BUT WELD
- STAINLESS STEEL FITTINGS ASTM A182 TP304 OR TP316 SOCKET WELD
- SEE MANUFACTURING DRAWINGS FOR DETAILS
- PRESSURE OF SAFETY VALVES MAY BE LESS THAN THE MAXIMUM AUTHORIZED PRESSURE OF THE RACK, IF THE COMPONENTS CONNECTED TO THE RACK HAVE A MAXIMUM AUTHORIZED PRESSURE LOWER THAN THOSE
- RISK OF HYDROSTATIC EXPANSION OF REFRIGERANT IF CLOSED. CLOSE FOR TEMPORARY MAINTENANCE ONLY
- BALL VALVES TO OPEN FOR START-UP ONLY

[2021 Washington State Mechanical Code, section 1109.2.7]
Pipe Identification
 Refrigerant pipe located in areas other than the room or space where the refrigerating equipment is located shall be identified. The pipe identification shall be located at intervals not exceeding 20 feet (6096 mm) on the refrigerant piping or pipe insulation. The minimum height of lettering of the identification label shall be 1/2 inch (12.7 mm). The identification shall indicate the refrigerant designation and safety group classification of refrigerant used in the piping system. For Group A2, A3, B2 and B3 refrigerants, the identification shall also include the following statement: "DANGER—Risk of Fire or Explosion. Flammable Refrigerant." For any Group B refrigerant, the identification shall also include the following statement: "DANGER—Toxic Refrigerant."

[2021 Washington State Mechanical Code, section 1109.5]
Refrigerant Pipe Penetrations
 The annular space between the outside of a refrigerant pipe and the inside of a pipe sleeve or opening in a building envelope wall, floor or ceiling assembly penetrated by a refrigerant pipe shall be sealed in an approved manner with caulking material or foam sealant or closed with a gasketing system. The caulking material, foam sealant or gasketing system shall be designed for the conditions at the penetration location and shall be compatible with the pipe, sleeve and building materials in contact with the sealing materials. Refrigerant pipes penetrating fire-resistance-rated assemblies or membranes of fire-resistance-rated assemblies shall be sealed or closed in accordance with Section 714 of the International Building Code.

[2021 Washington State Mechanical Code, section 1109.2.6]
Exposed Piping Surface Temperature
 Exposed piping with ready access having surface temperatures greater than 120°F (49°C) or less than 5°F (-15°C) shall be protected from contact or shall have thermal insulation that limits the exposed insulation surface temperature to a range of 5°F (-15°C) to 120°F (49°C).

City of Puyallup Development & Permitting Services ISSUED PERMIT	
Building	Planning
Engineering	Public Works
Fire	Traffic



NO.	DATE	DESCRIPTION
1	7/1/24	REFRIGERATION COORDINATION SET

SCALE	NONE
DESIGNED BY	J. McSWAIN
DRAWN BY	J. BLOUNT
CHECKED BY	J. McSWAIN

Republic Refrigeration, Inc.
 2810 Gray Fox Road Monroeville, NC 28110
 (704) 282-0399

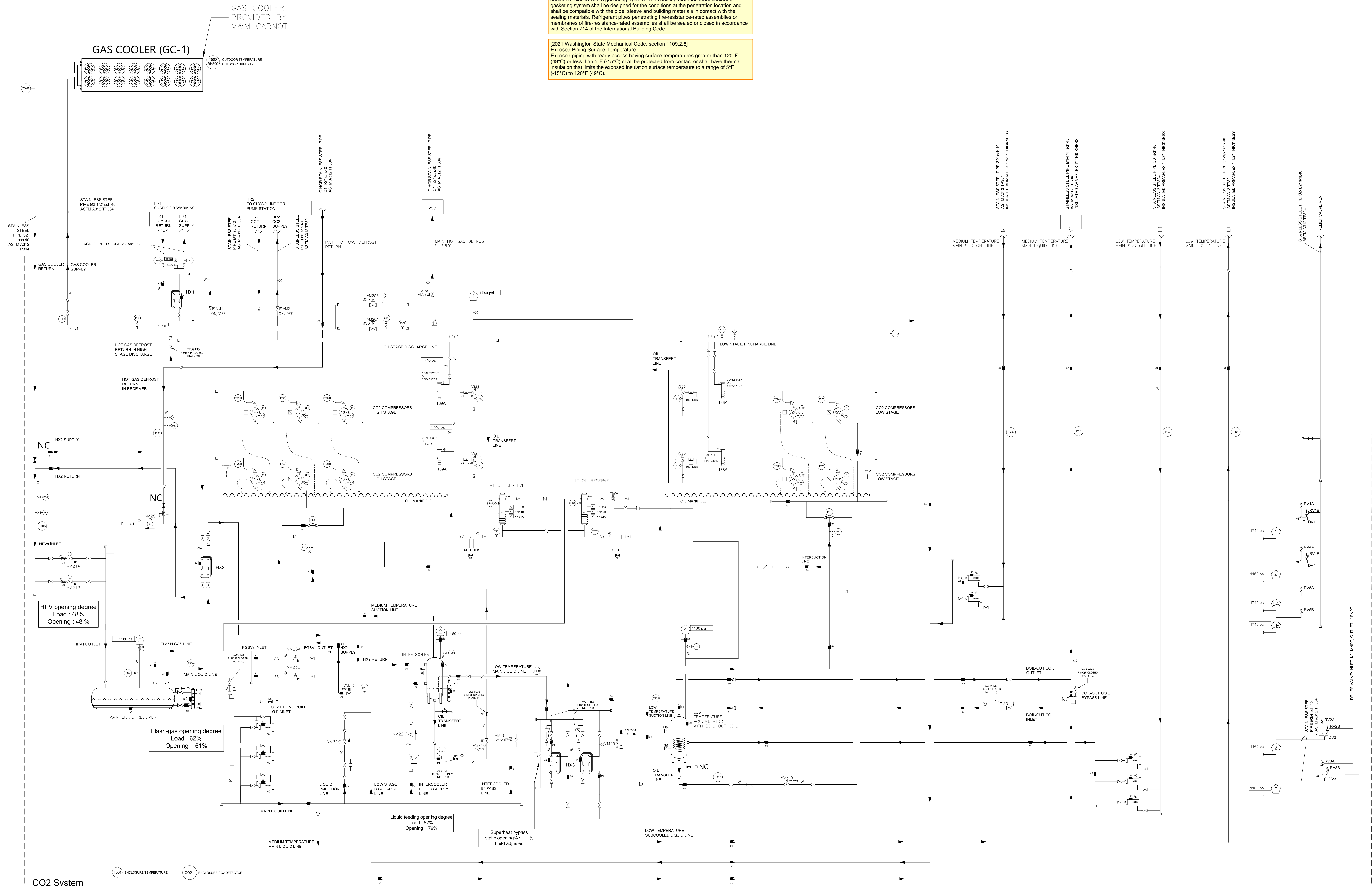
COASTAL PACIFIC WASHINGTON

DRAWING DESCRIPTION
FLOW DIAGRAM

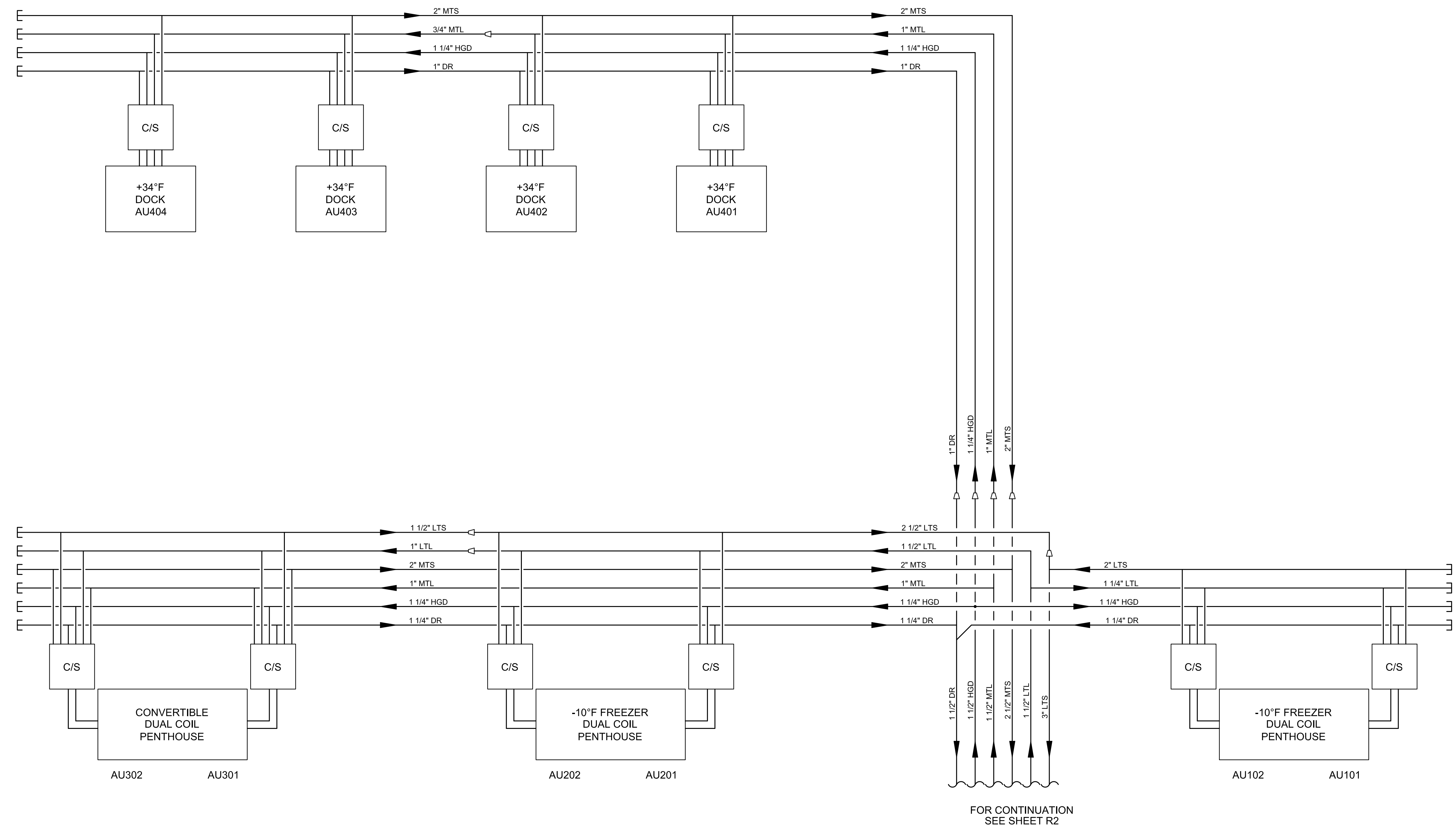
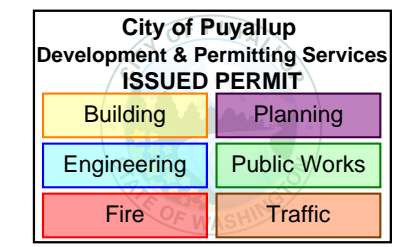
DRAWING
R2
 1 of 1

DATE
4/5/24

PROJECT NO.
CR2308A

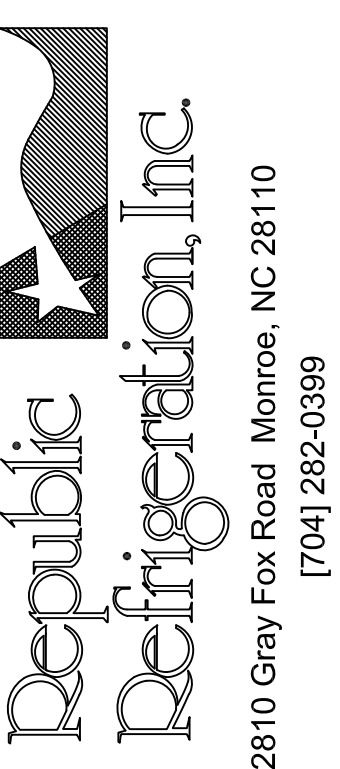


CO2 System
 (T01) ENCLOSURE TEMPERATURE (CO2) ENCLOSURE CO2 DETECTOR
 SYSTEM'S LIMITS - INSTALLATION OF PIPING AND EQUIPMENT OUTSIDE OF BOXED AREA EXECUTED BY OTHERS



NO.	DATE	DESCRIPTION
1	7/1/24	REFRIGERATION COORDINATION SET

SCALE	NONE
DESIGNED BY	J. McSWAIN
DRAWN BY	J. BLOUNT
CHECKED BY	J. McSWAIN



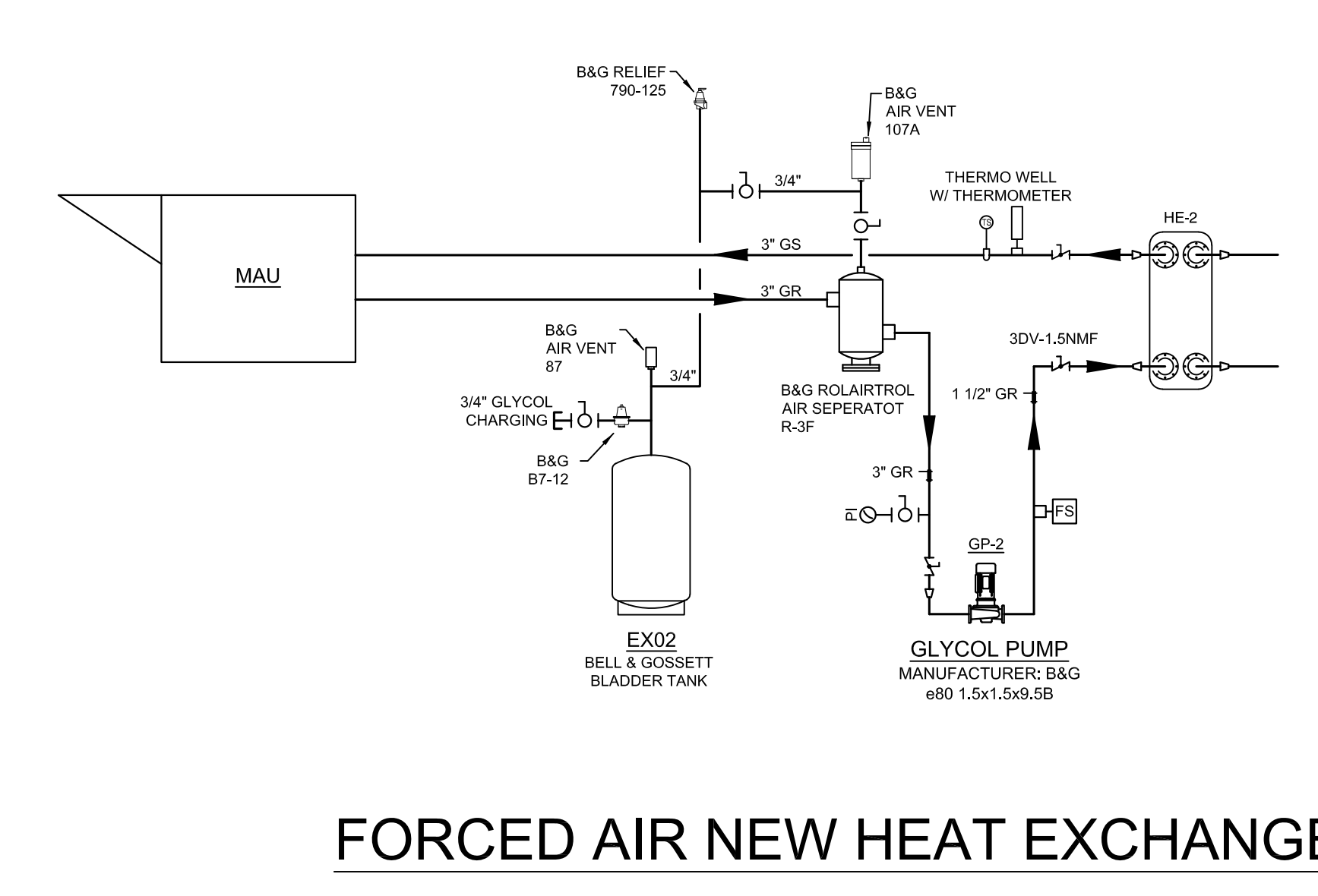
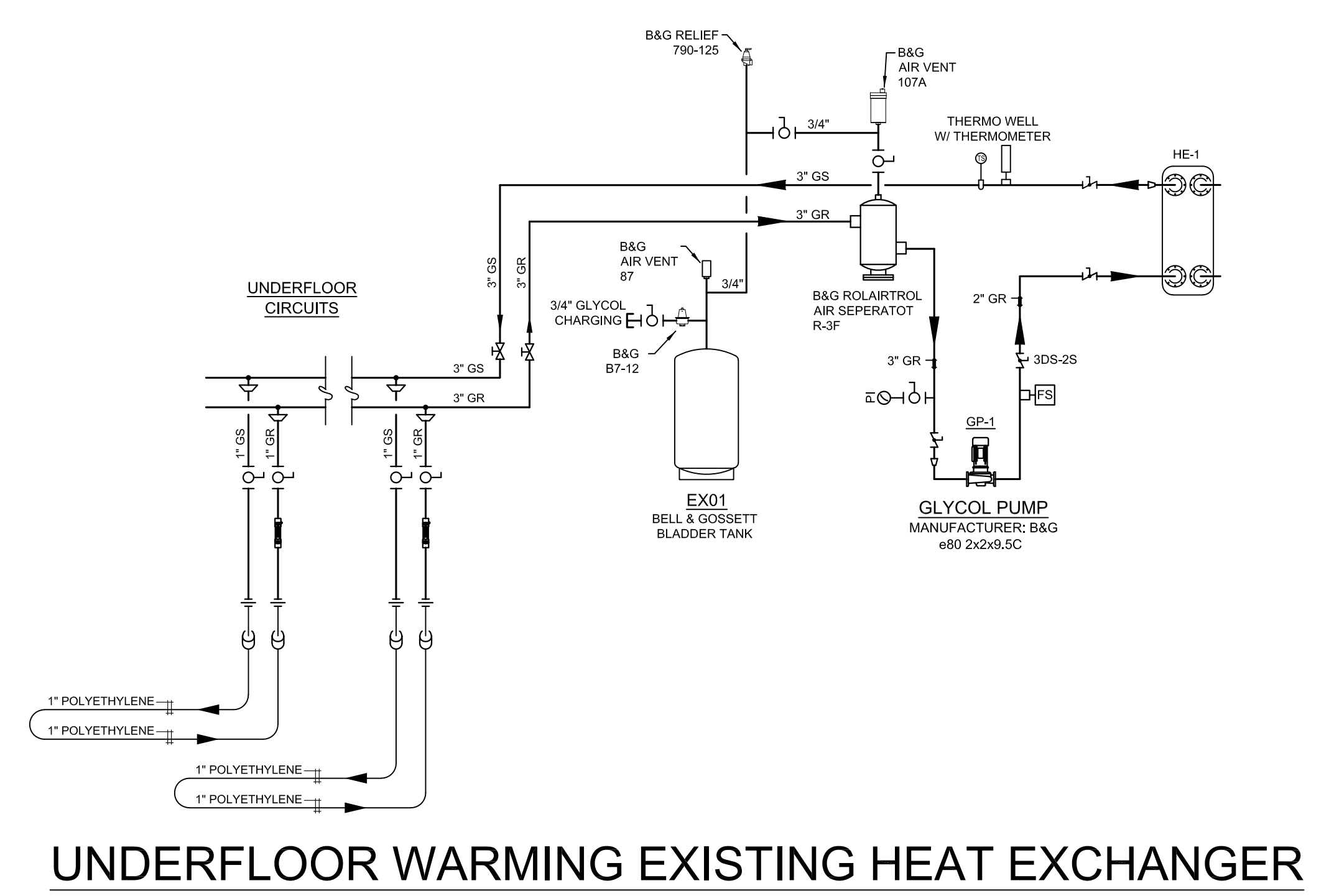
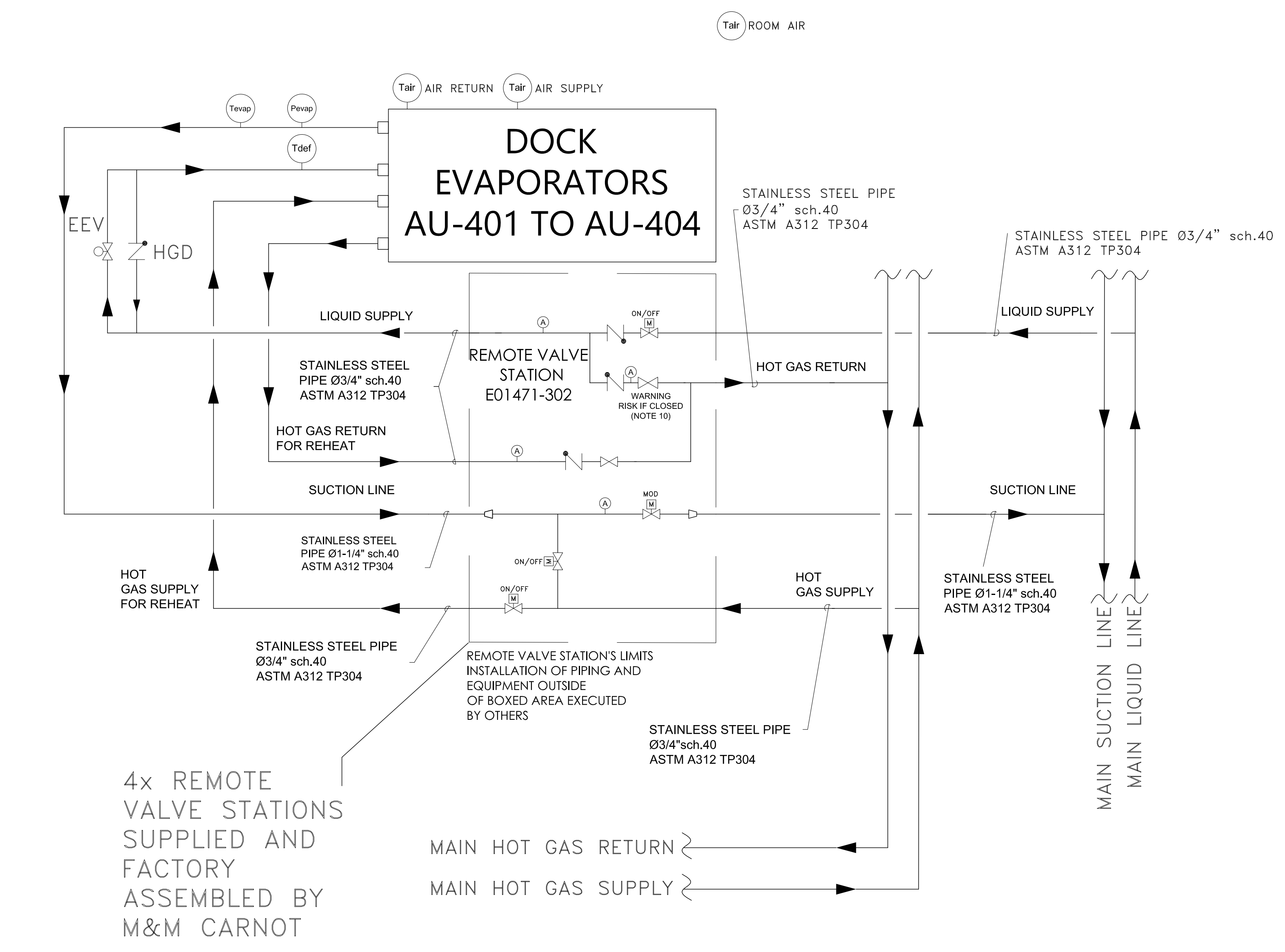
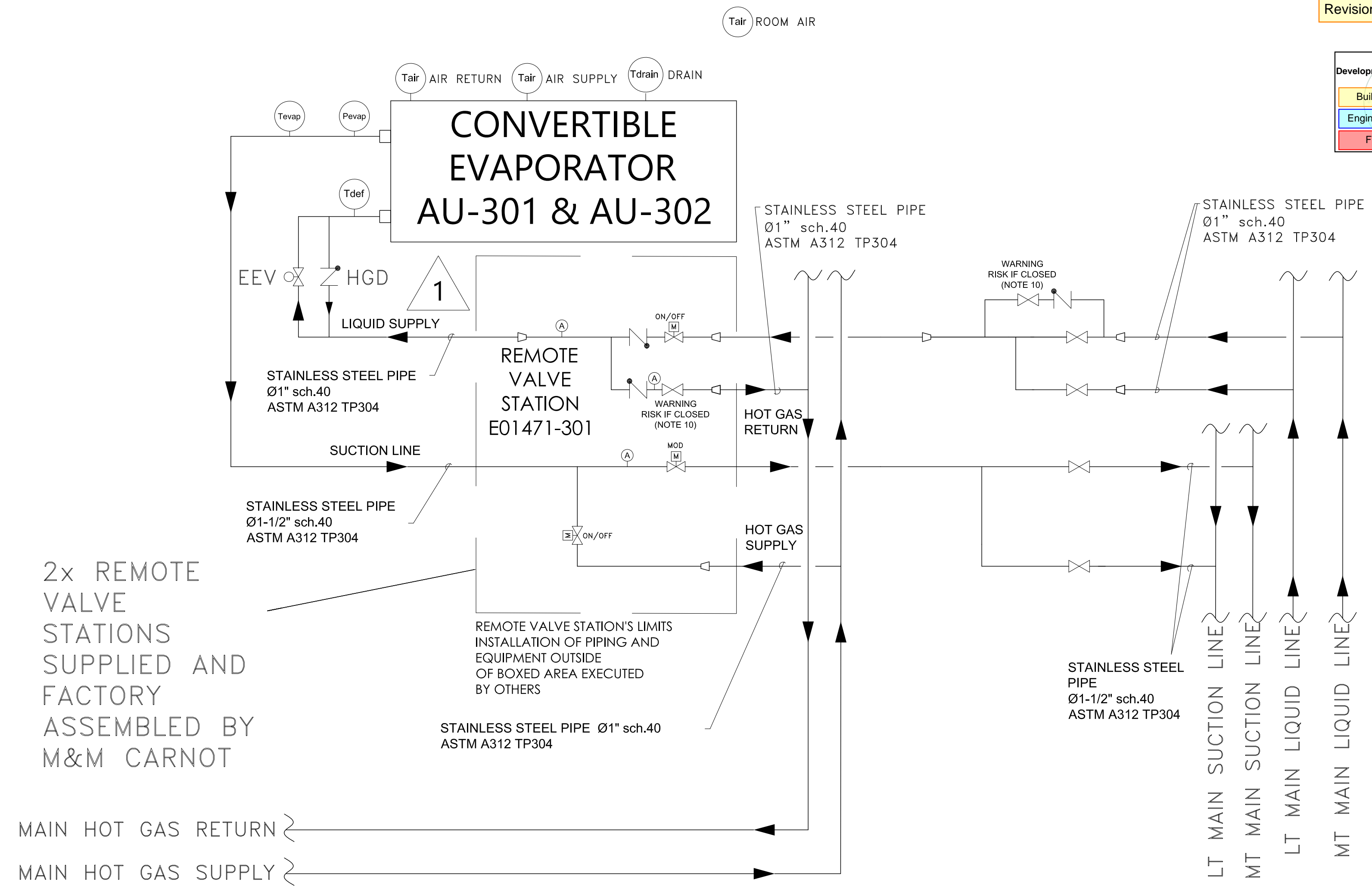
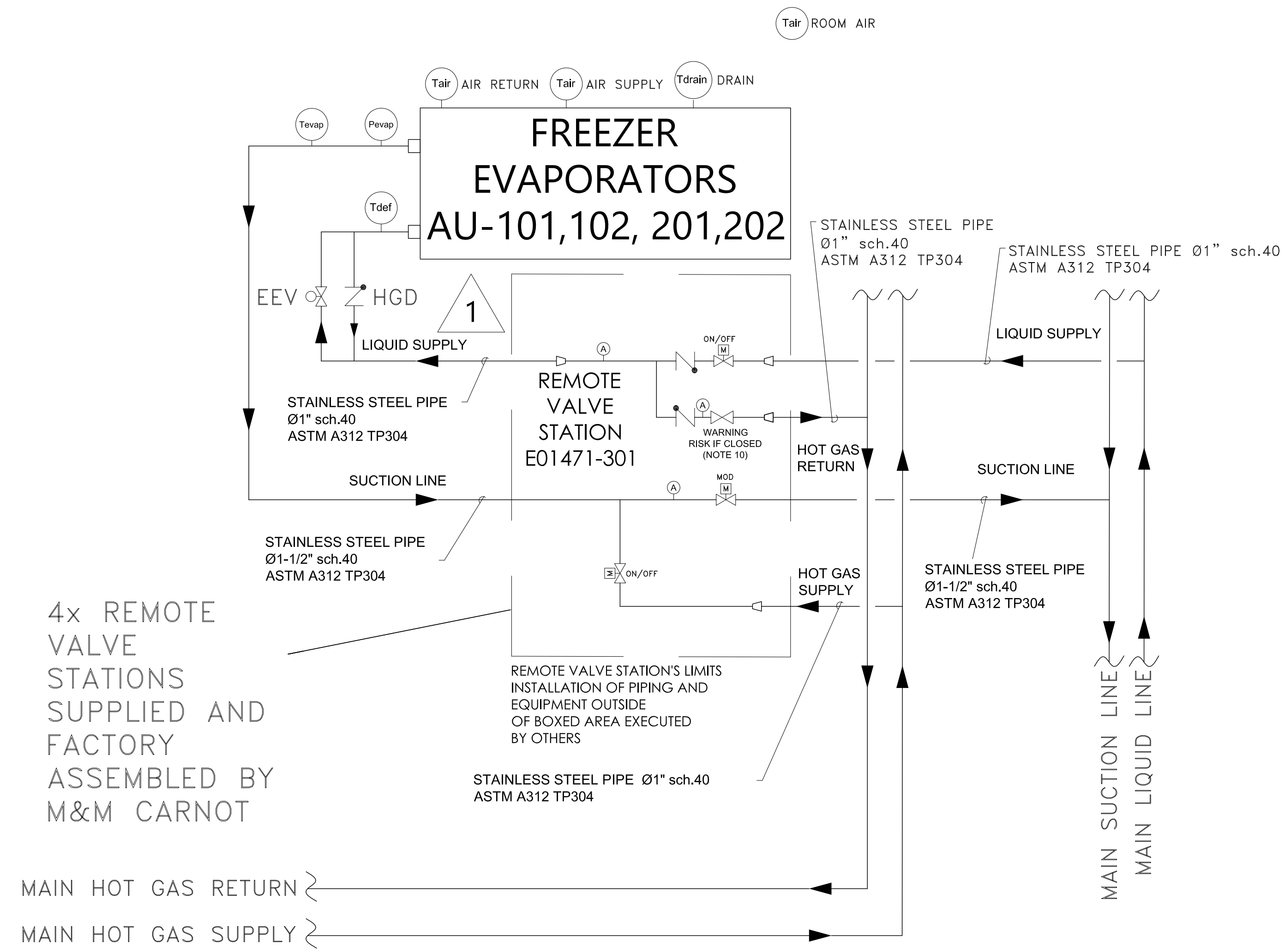
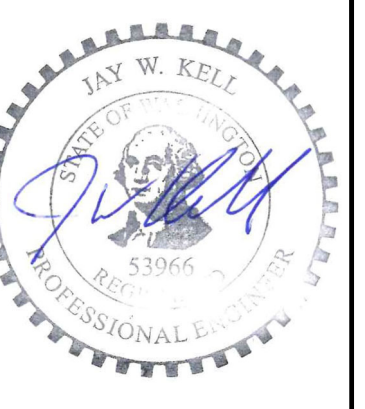
COASTAL PACIFIC
WASHINGTON

DRAWING DESCRIPTION
**FLOW
DIAGRAM**

DRAWING
R3
1 of 1

DATE
4/5/24

PROJECT NO.
CR2308A



NO	DATE	DESCRIPTION
1	7/15/24	REFRIGERATION COORDINATION SET

SCALE	NONE
DESIGNED BY	J. MCSWAIN
DRAWN BY	J. BLOUNT
CHECKED BY	J. MCSWAIN

Republic Refrigeration, Inc.
2810 Gray Fox Road, Monroe, NC 28110
[704] 282-0399

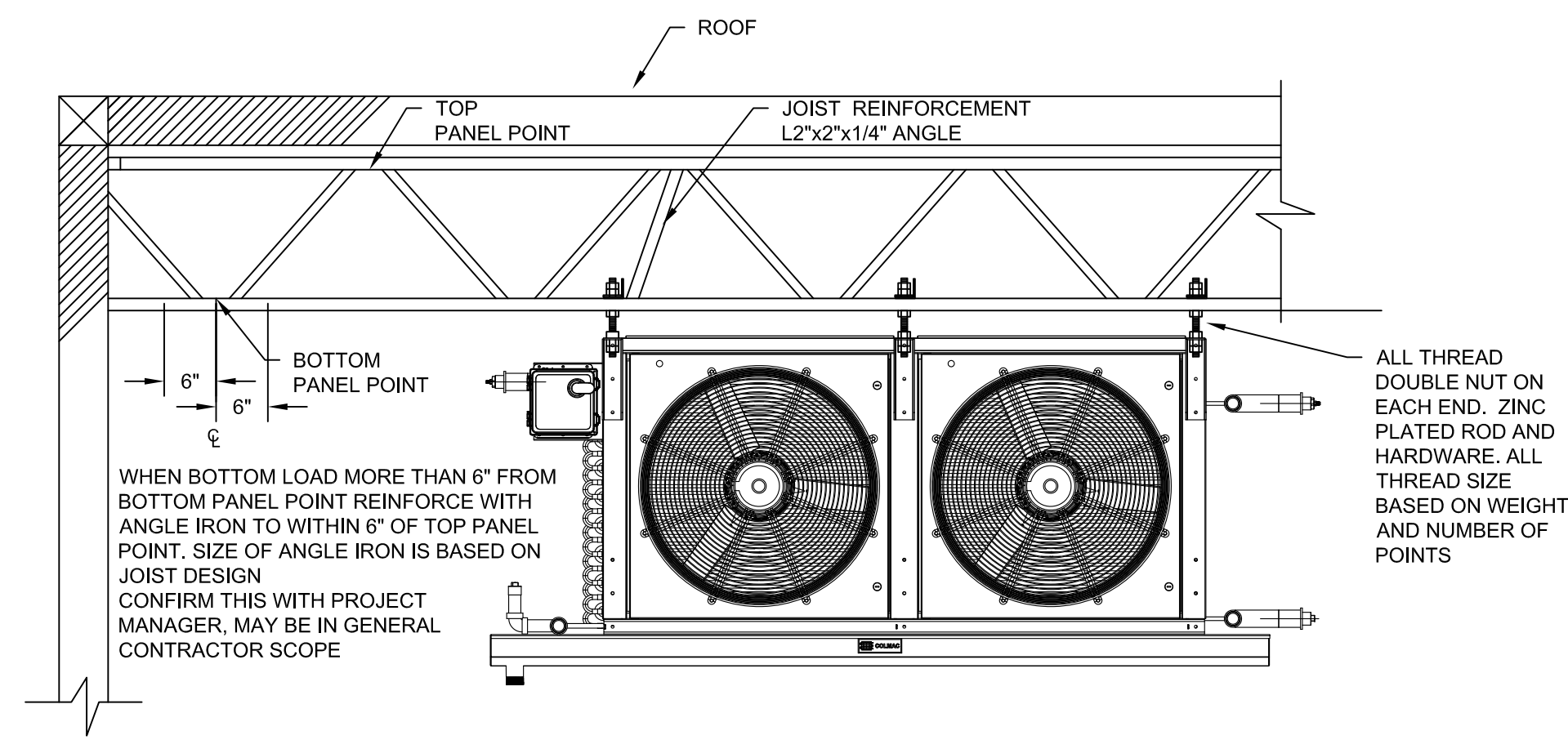
COASTAL PACIFIC WASHINGTON

DRAWING DESCRIPTION
CONTROL STATIONS

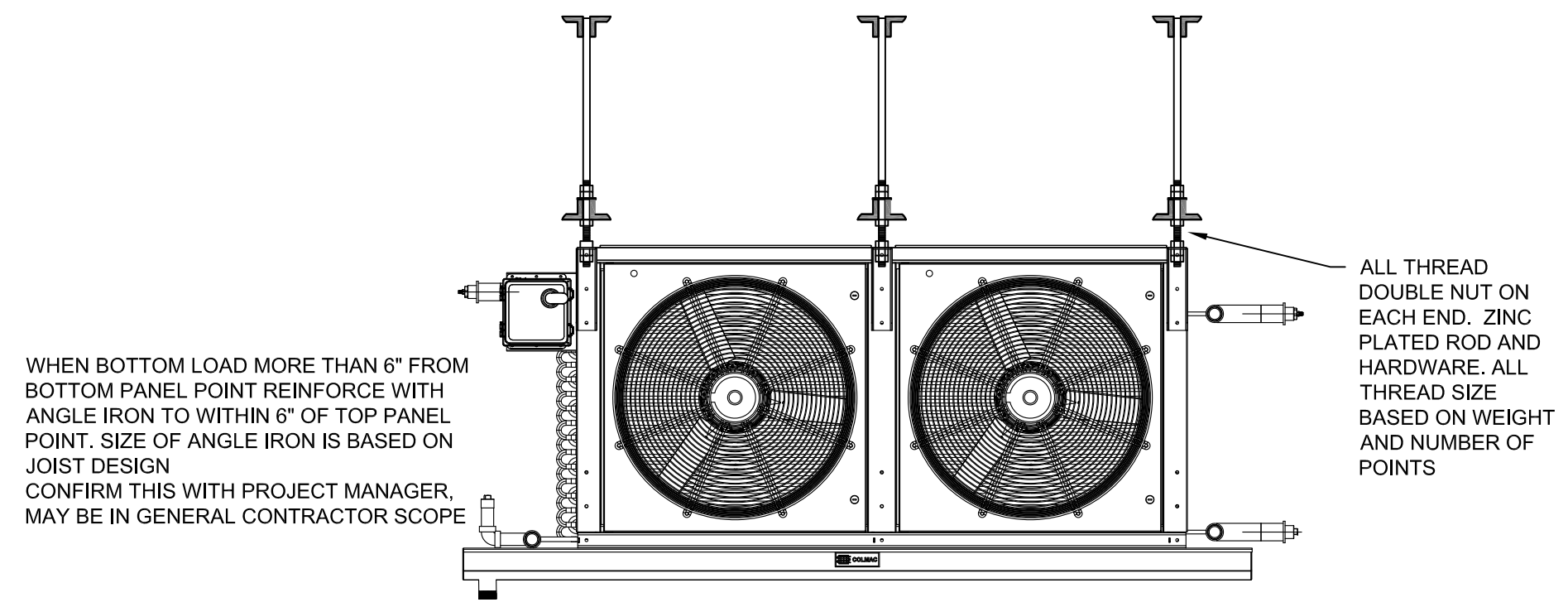
DRAWING
R7
1 OF 1

DATE
4/5/24

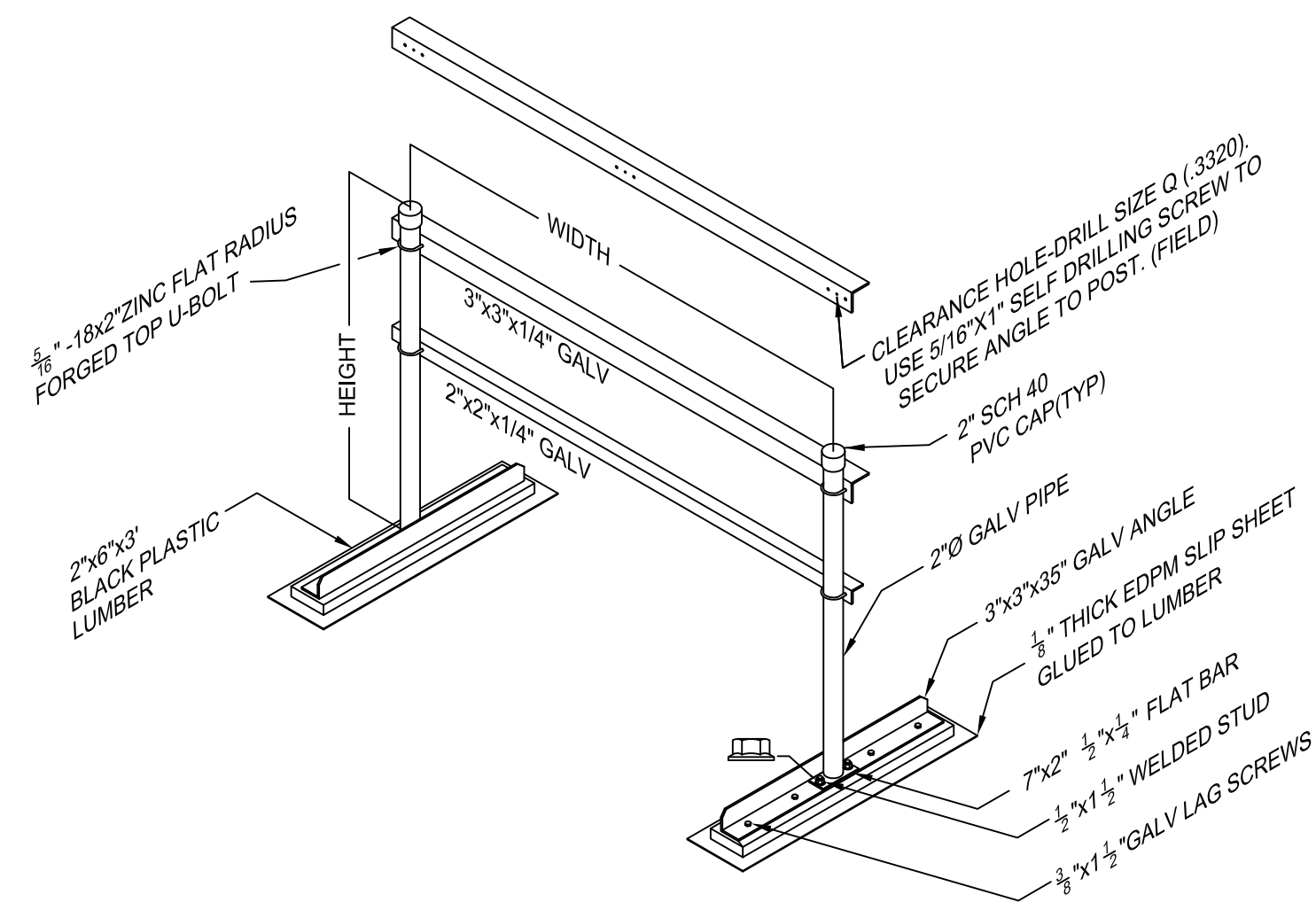
PROJECT NO.
CR2308A



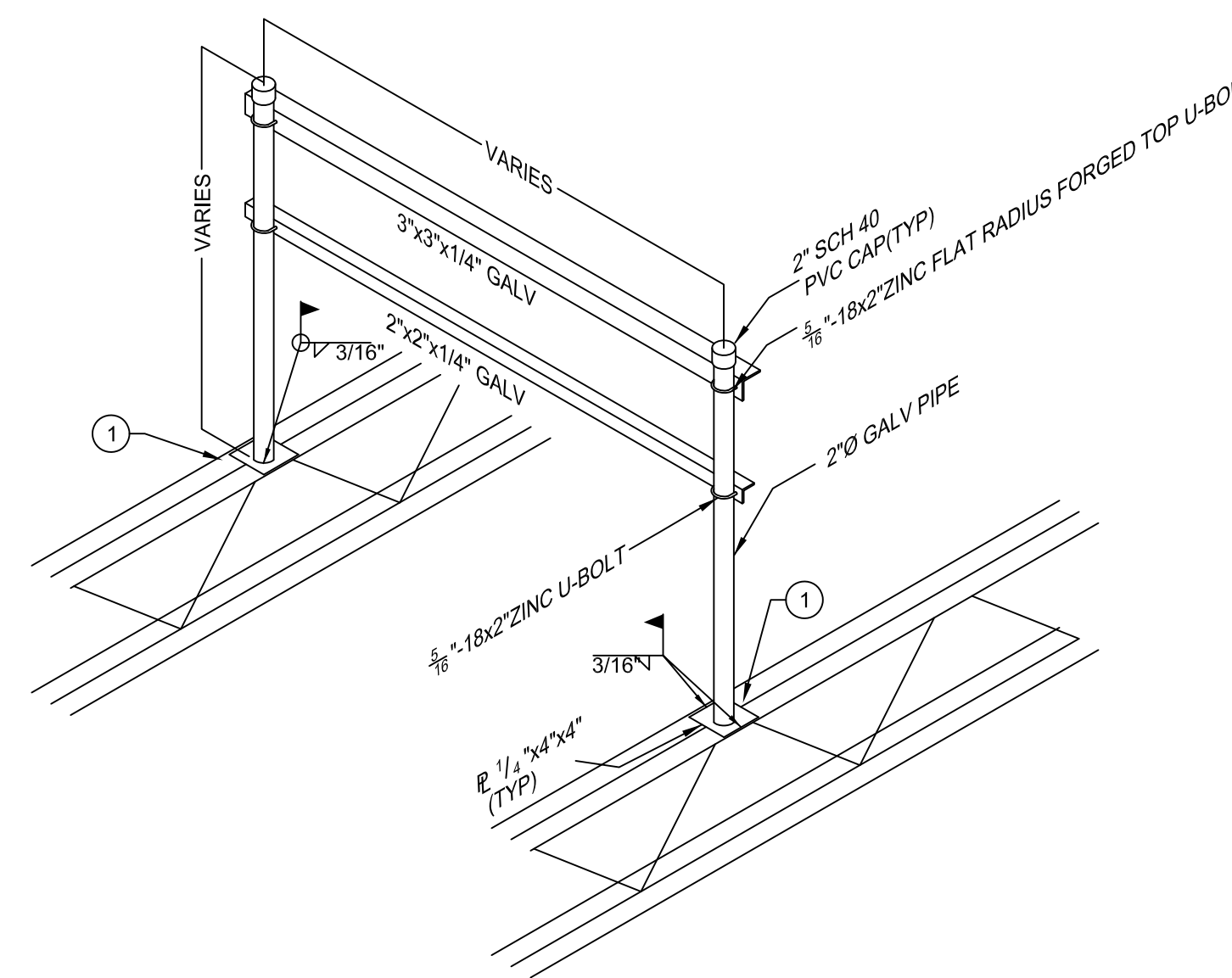
A1 AIR UNIT HANGING/JOIST REINFORCEMENT DETAIL



A2 AIR UNIT HANGING/JOIST REINFORCEMENT DETAIL

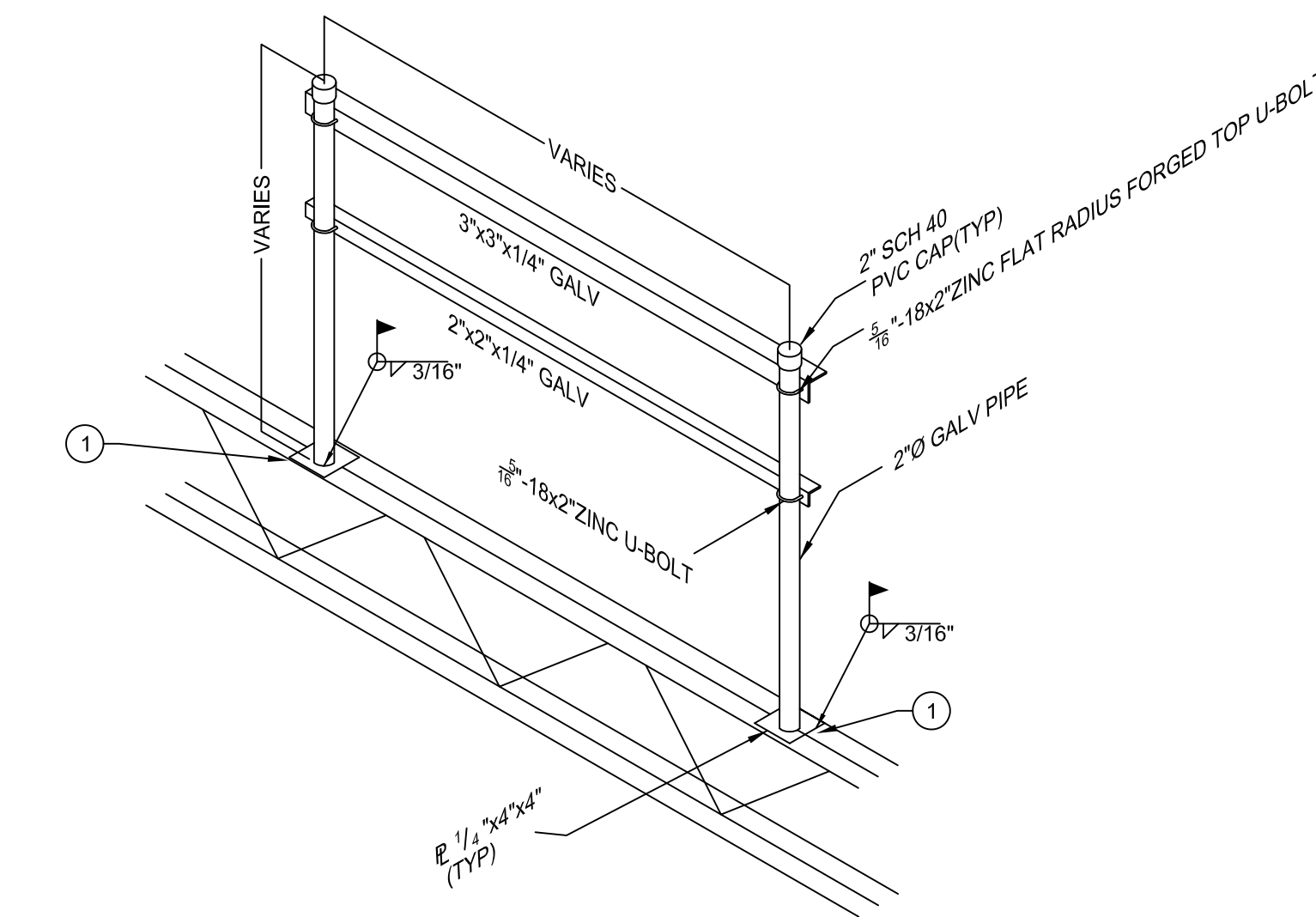


B1 PIPE SUPPORT DETAIL FOR 2 LEG STANDS FOR STANDS NOT ATTACHED TO BAR JOIST



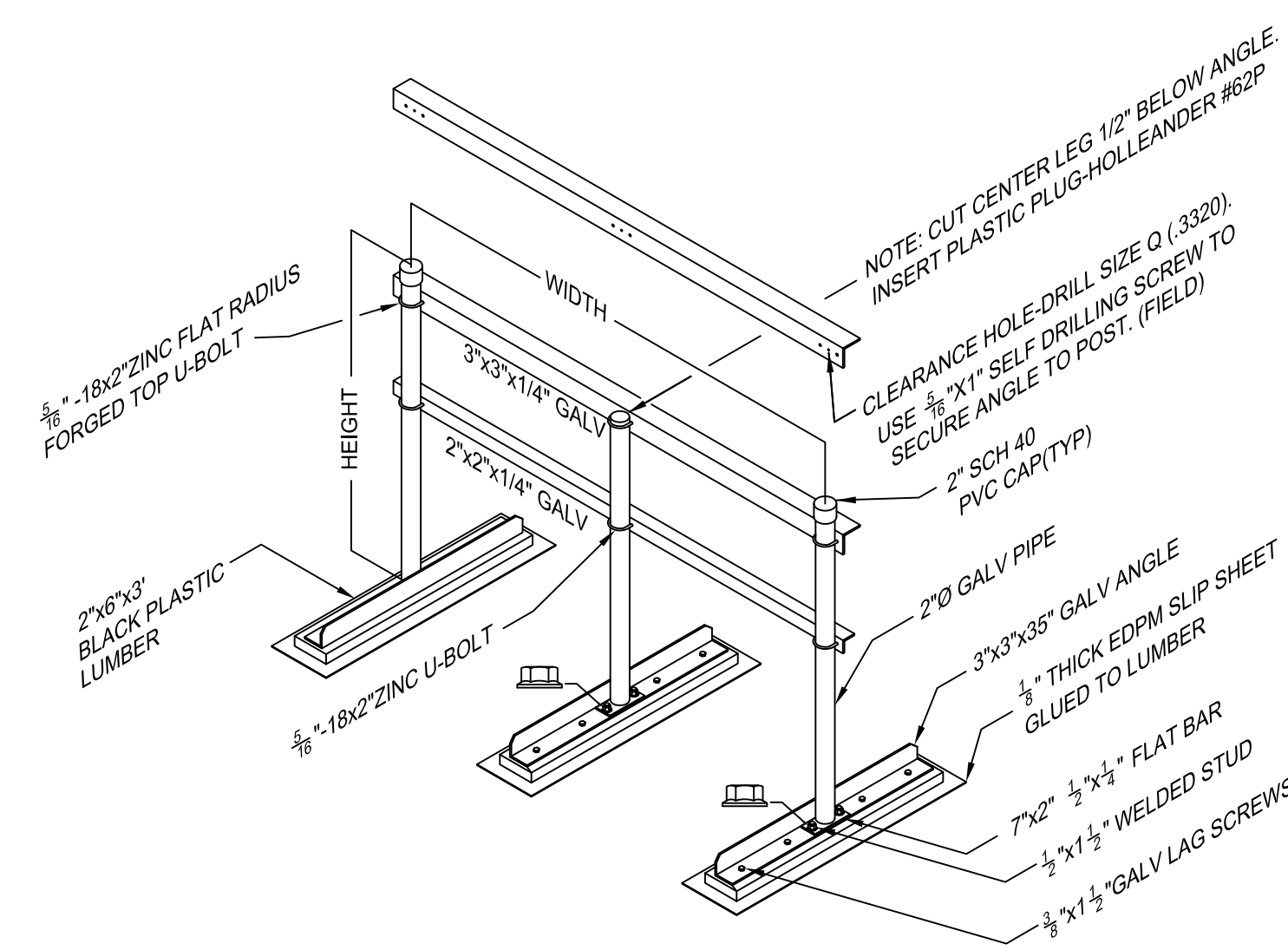
B2 PIPE SUPPORT DETAIL FOR 2 LEG STANDS PERPENDICULAR AND ATTACHED TO BAR JOIST

1.) 3/16\"/>

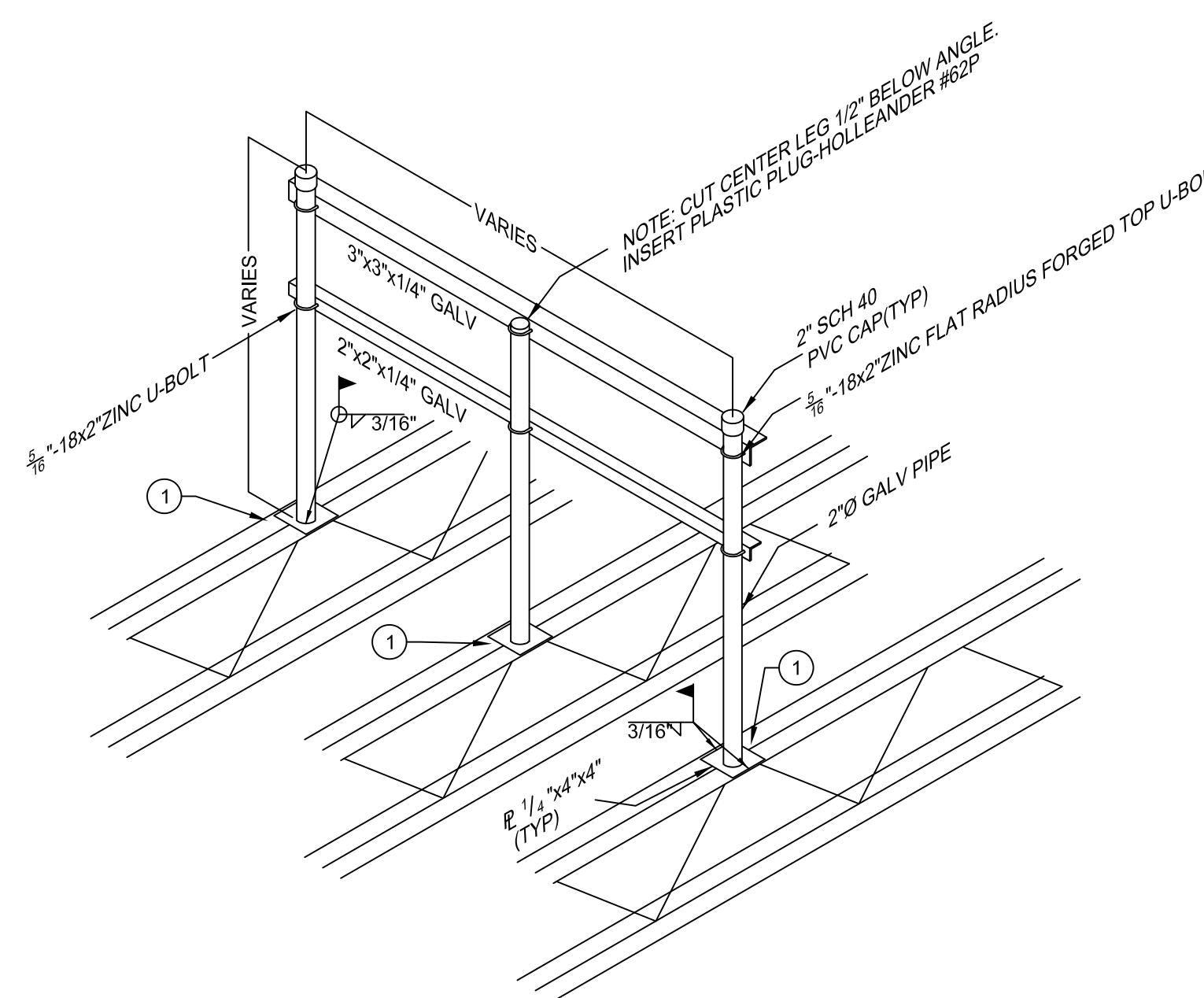


B3 PIPE SUPPORT DETAIL FOR 2 LEG STANDS PARALLEL AND ATTACHED TO BAR JOIST

1.) 3/16\"/>

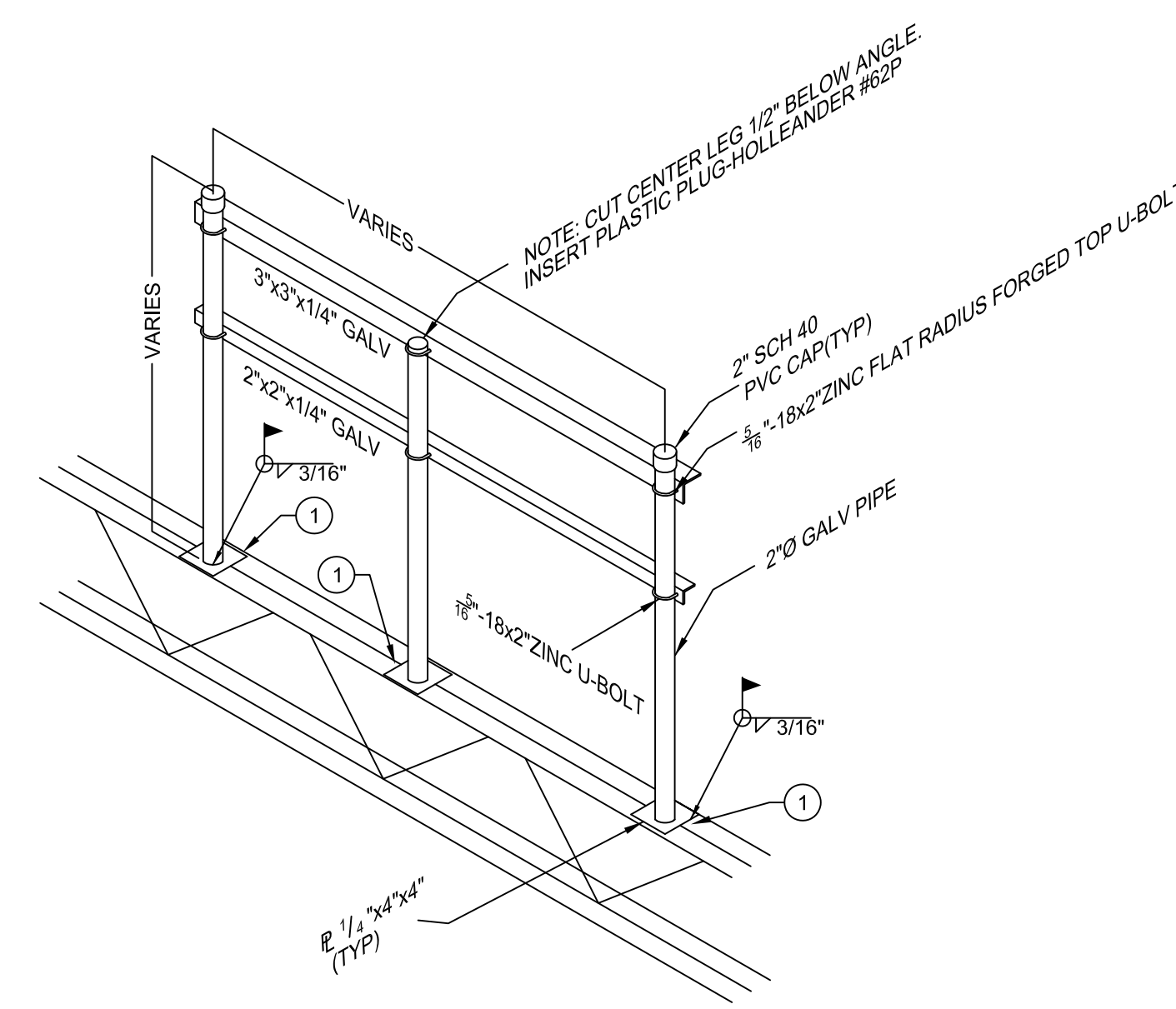


B4 PIPE SUPPORT DETAIL FOR 3 LEG STANDS FOR STANDS NOT ATTACHED TO BAR JOIST



B5 PIPE SUPPORT DETAIL FOR 3 LEG STANDS PERPENDICULAR AND ATTACHED TO BAR JOIST

1.) 3/16\"/>



B6 PIPE SUPPORT DETAIL FOR 3 LEG STANDS PARALLEL AND ATTACHED TO BAR JOIST

1.) 3/16\"/>

NO.	DATE	DESCRIPTION
1	7/1/24	REFRIGERATION COORDINATION SET

SCALE	NONE
DESIGNED BY	J. MCSWAIN
DRAWN BY	J. LOUNT
CHECKED BY	J. MCSWAIN

Republic Refrigeration, Inc.
2810 Gray Fox Road Monroe, NC 28110
[704] 282-0399

COASTAL PACIFIC WASHINGTON

DRAWING DESCRIPTION

REFRIGERATION STANDARD DETAILS

DRAWING

R8.1

1 OF 1

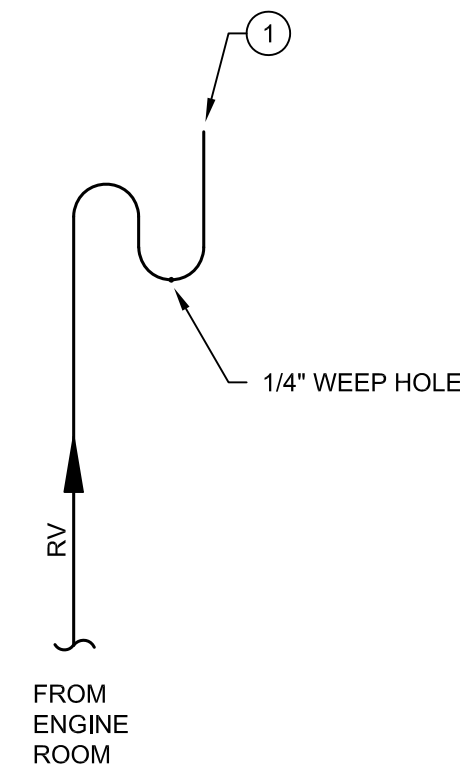
DATE

2/12/24

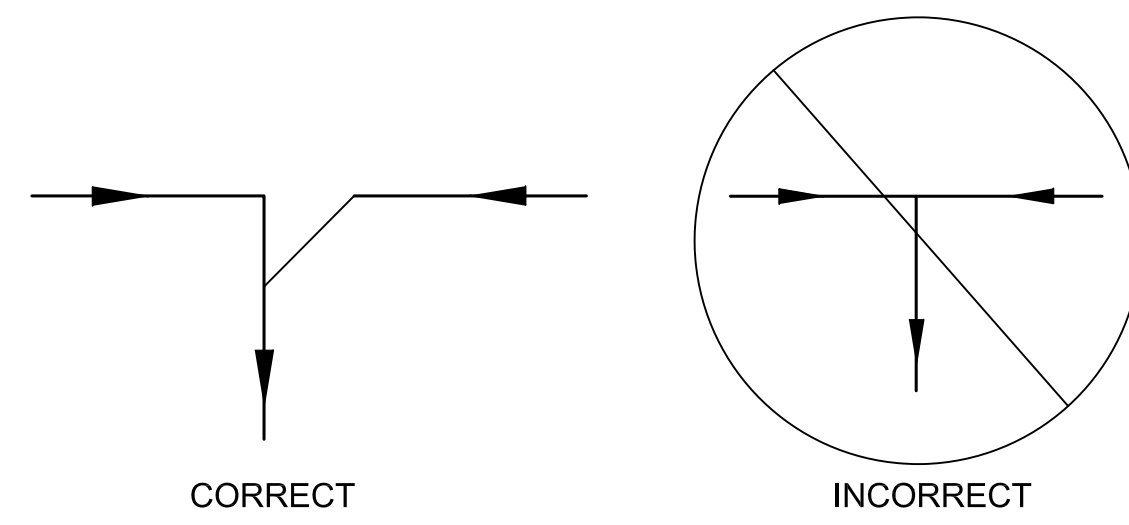
PROJECT NO.

CR2308A

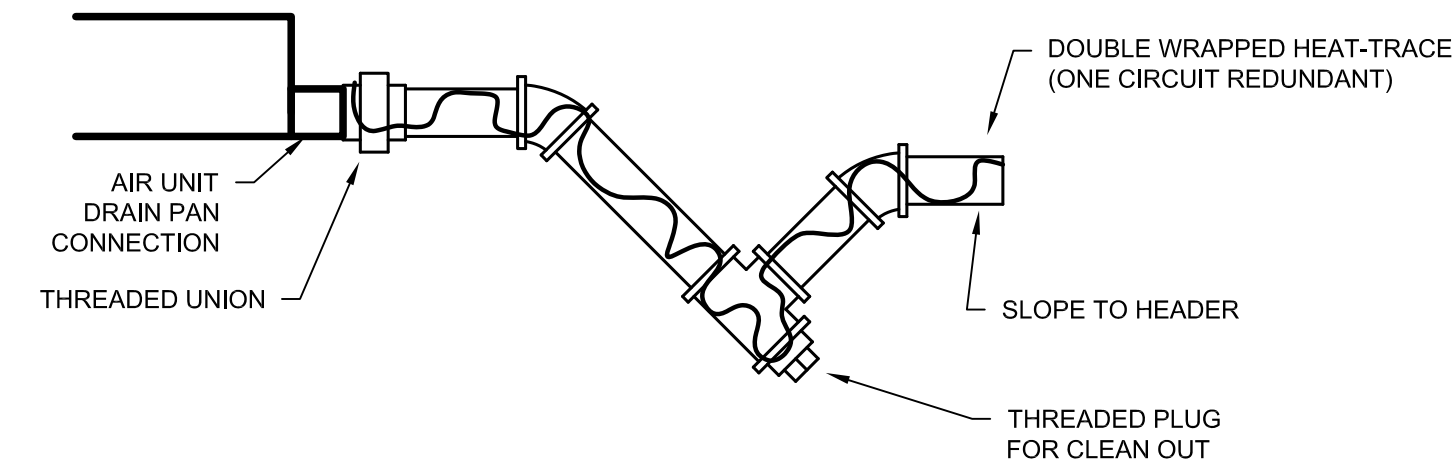
Welding to be completed by an individual or fabricator who is WABO certified or approved by the Building Official to perform the work. All welds must be inspected and approved by a WABO certified special inspector.



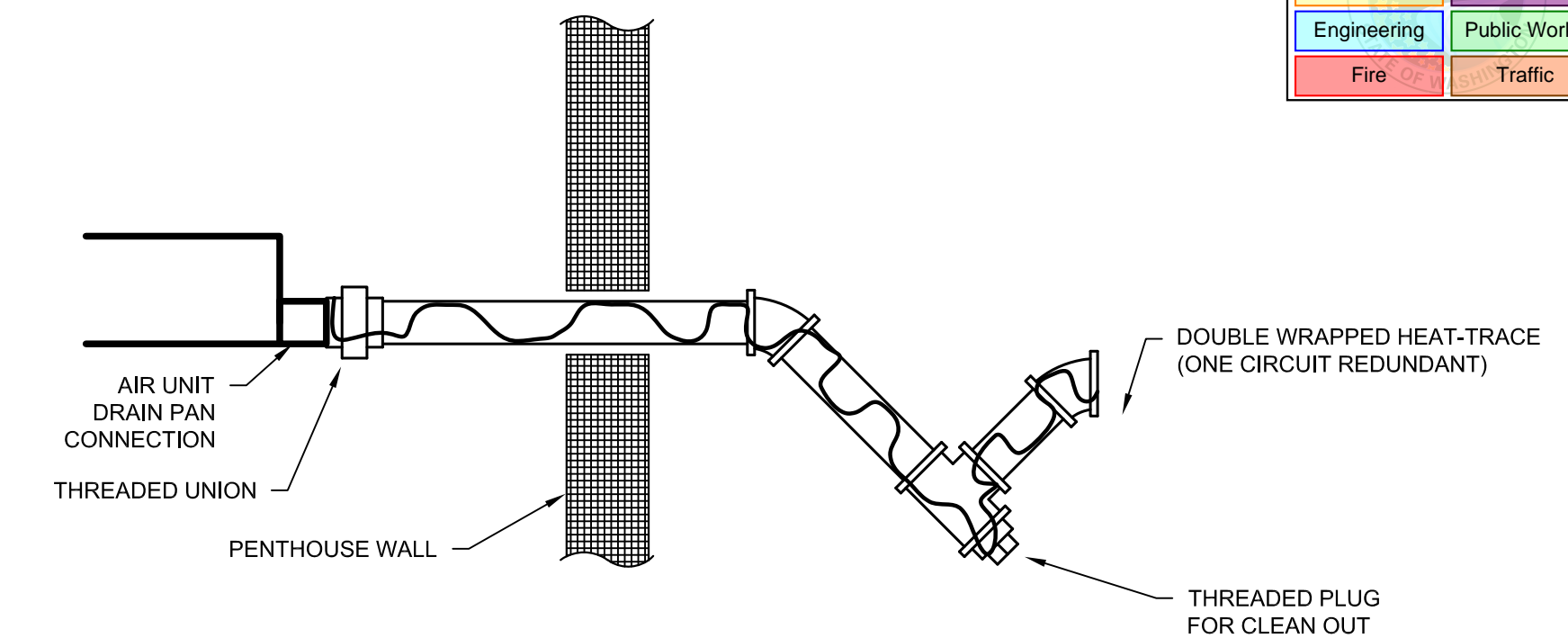
(C) RELIEF HEADER ATMOSPHERIC DISCHARGE DETAIL
1.) INSTALL BIRD SCREEN ON OUTLET.



(G) CONDENSER DRAIN PIPING
1.) AVOID BULLHEAD TEES WHEN PIPING CONDENSER DRAIN.



(M3) CEILING HUNG AIR UNIT DRAIN TRAP DETAIL W/ HEAT-TRACE
1.) DO NOT USE CLOSE NIPPLES SO INSULATION IS EASIER.



(M4) PENTHOUSE AIR UNIT DRAIN TRAP DETAIL W/ HEAT-TRACE
1.) DO NOT USE CLOSE NIPPLES SO INSULATION IS EASIER.

NO	DATE	DESCRIPTION	BY

SCALE	NONE
DESIGNED BY	J. McSWAIN
DRAWN BY	J. LOUNT
CHECKED BY	J. McSWAIN

Republic Refrigeration, Inc.
2810 Gray Fox Road Monroe, NC 28110
[704] 282-0399

COASTAL PACIFIC WASHINGTON

DRAWING DESCRIPTION
REFRIGERATION STANDARD DETAILS

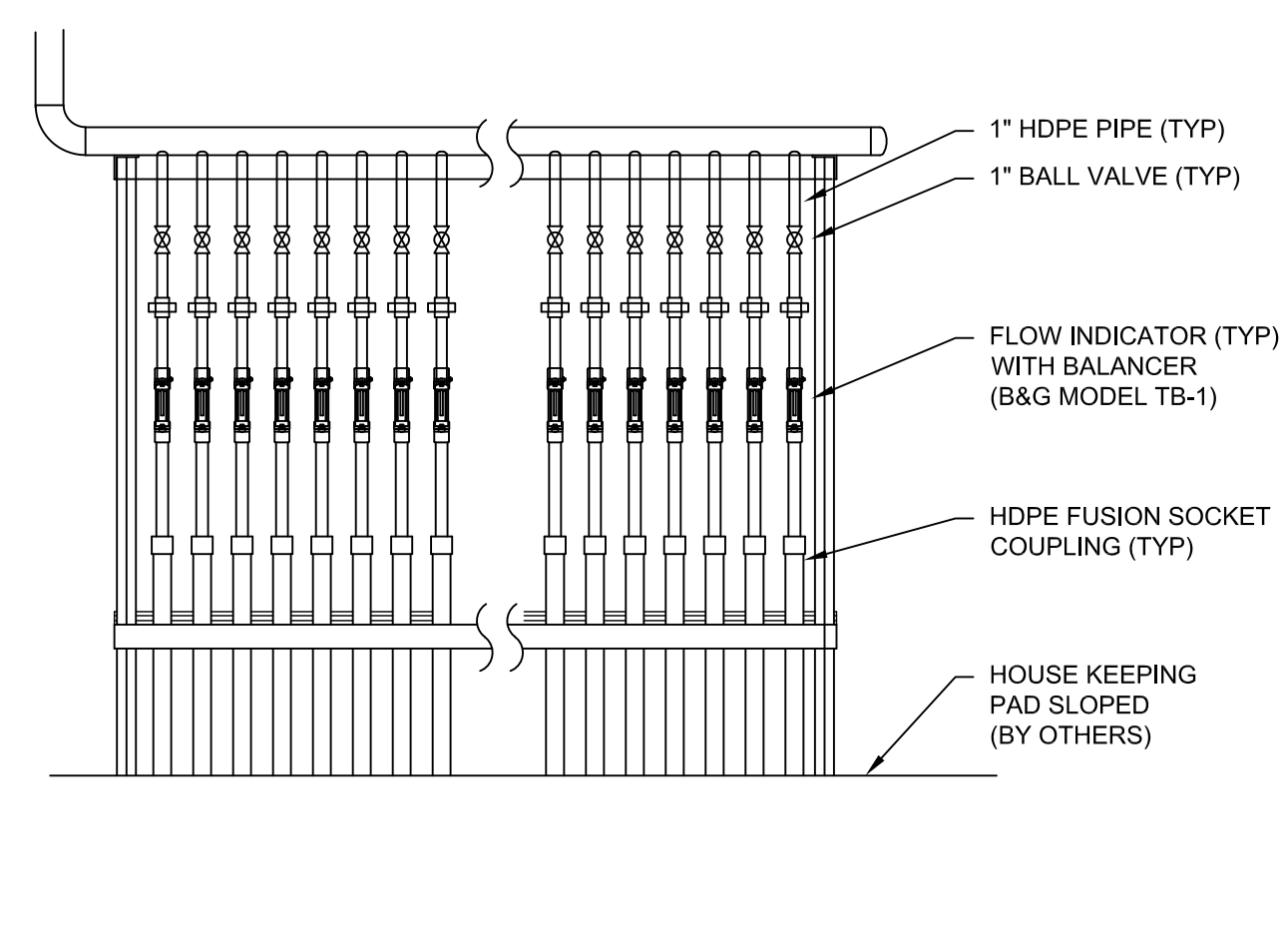
DRAWING
R8.2
1 OF 1

DATE
2/12/24

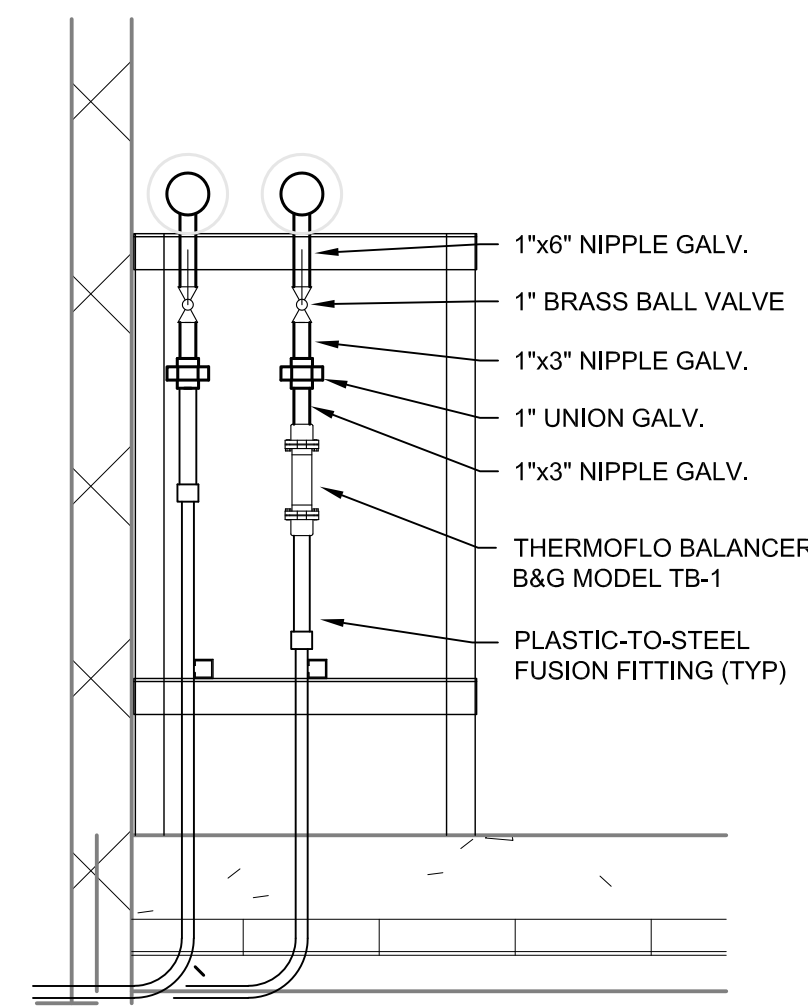
PROJECT NO.
CR2308A



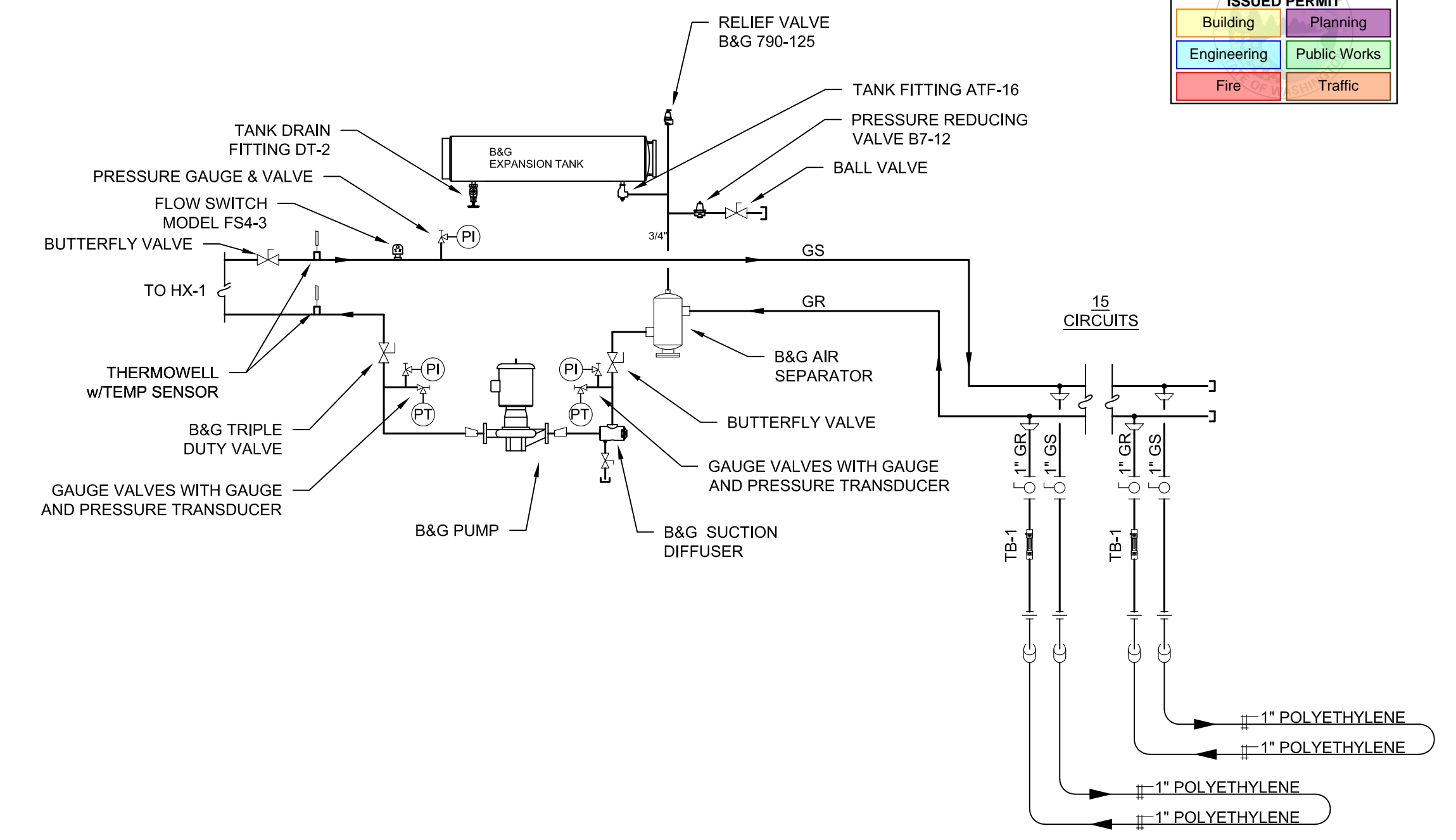
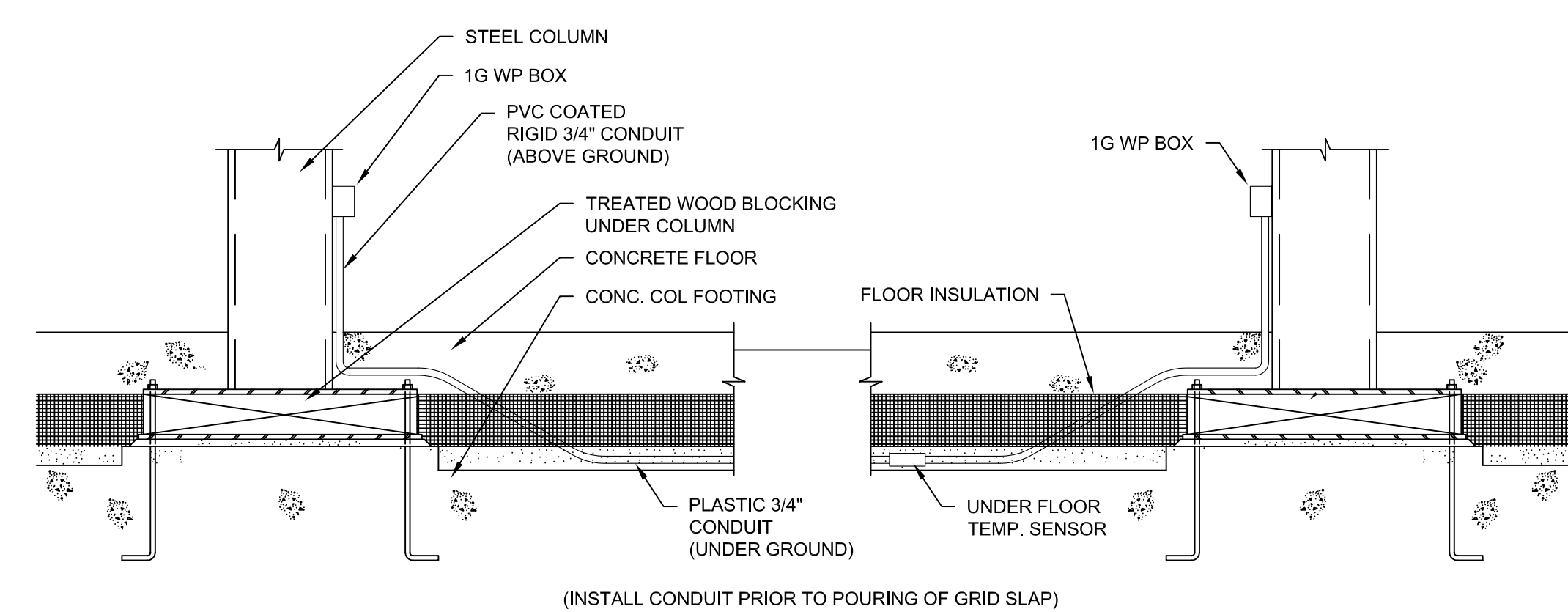
City of Puyallup Development & Permitting Services ISSUED PERMIT	
Building	Planning
Engineering	Public Works
Fire	Traffic



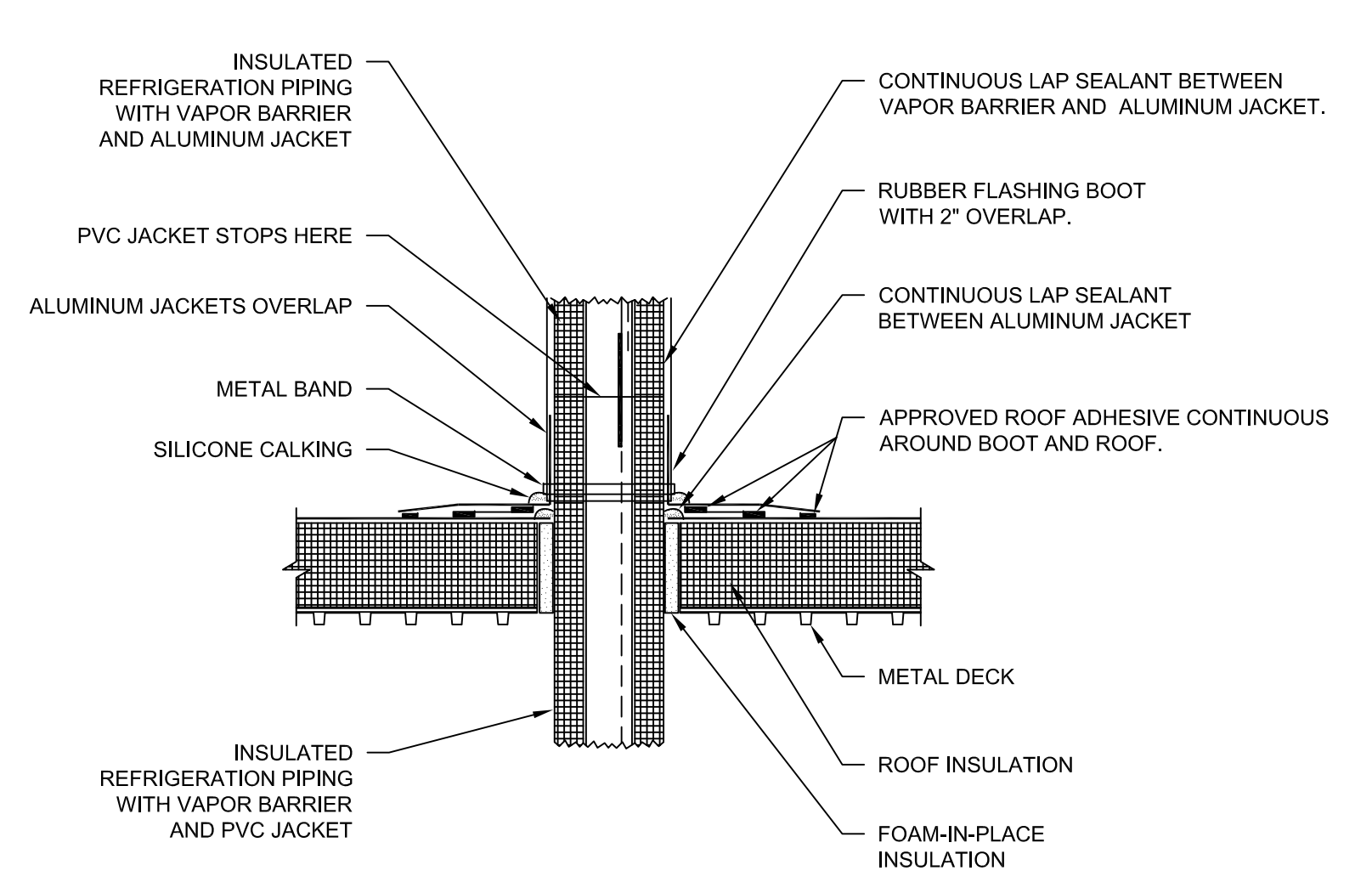
N1 UNDER FLOOR WARMING DETAILS
1.) ARMAFLEX TO BE USED 1 FOOT ABOVE CONCRTE



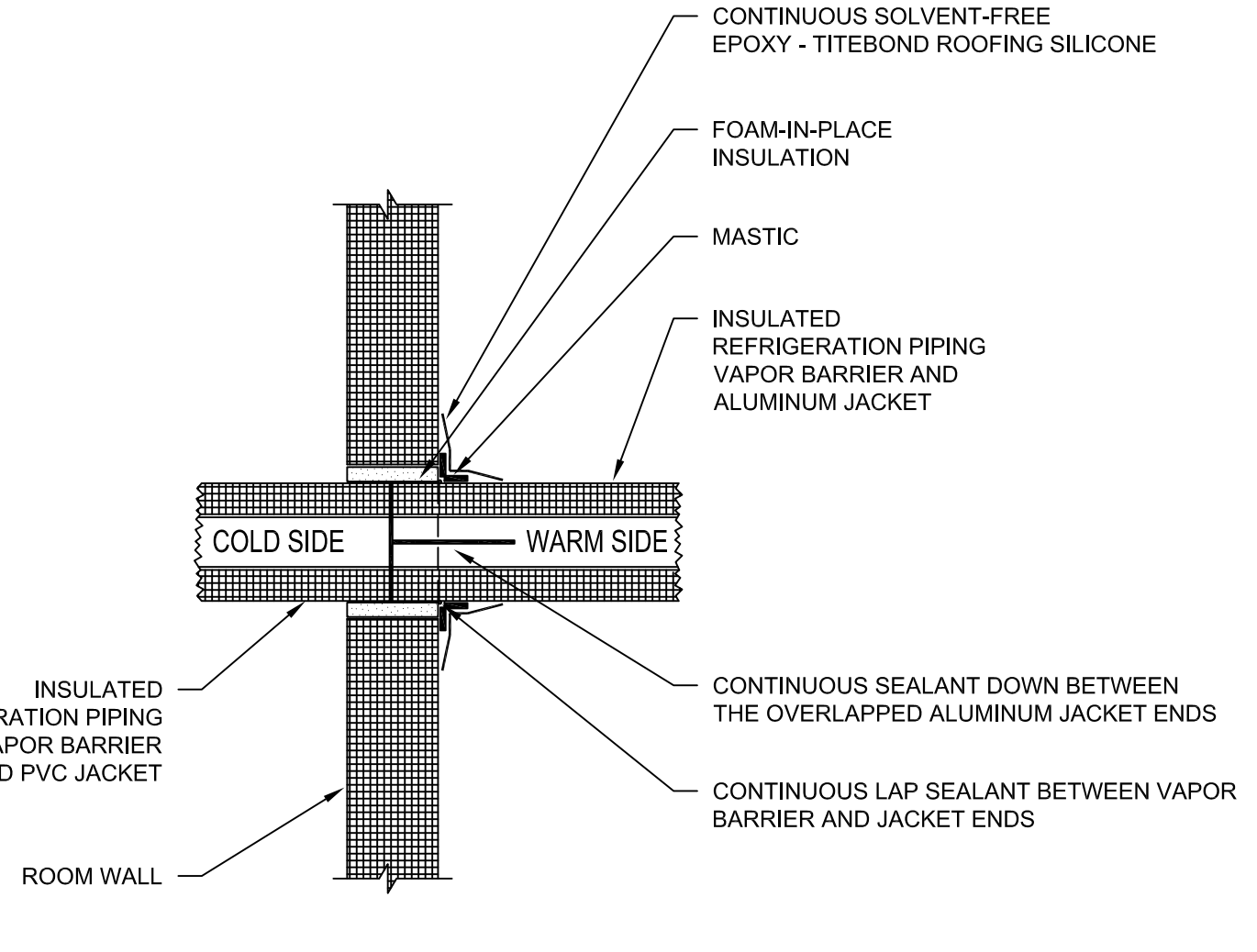
N2 UNDER FLOOR TEMP SENSOR DETAIL
1.) LEAVE A PULL STRING



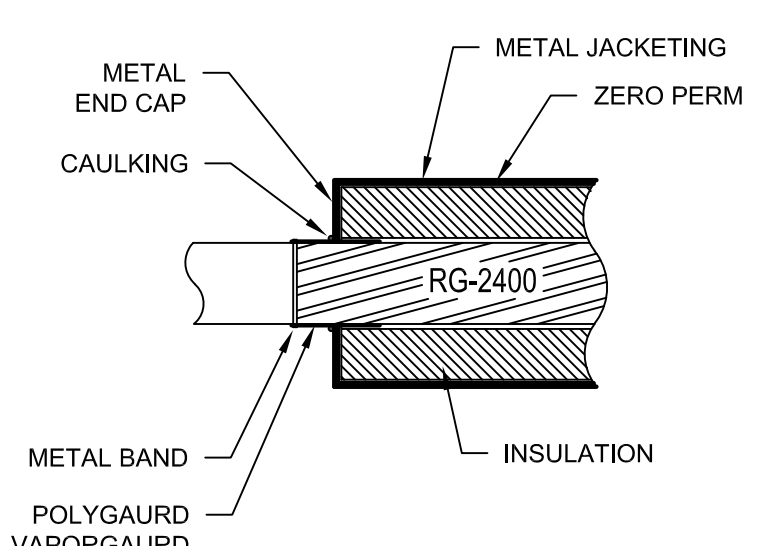
N3 EXAMPLE UNDER FLOOR SCHEMATIC



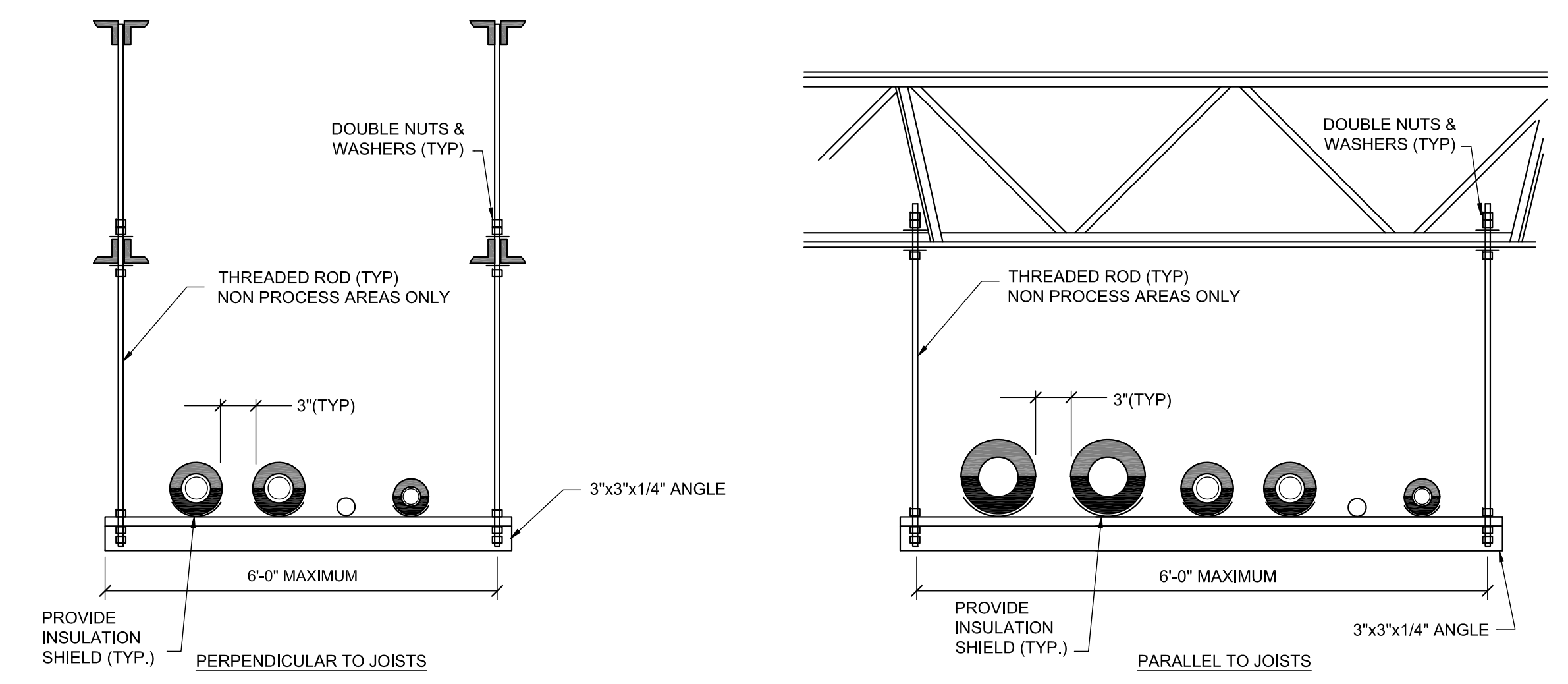
P1 INSULATED PIPE THRU REFRIGERATED ROOM OR NON-REFRIGERATION ROOM ROOF



P2 INSULATED PIPE THRU REFRIGERATED ROOM WALL OR NON-REFRIGERATION ROOM WALL



O INSULATION TERMINATION AT VALVE GROUPS



R PIPE HANGER TRAPEZE DETAILS
1.) HANGER RODS ARE TO BE SPACED AT 5' MAXIMUM ON CENTER.

[2021 Washington State Mechanical Code, section 1109.5]
Refrigerant Pipe Penetrations
The annular space between the outside of a refrigerant pipe and the inside of a pipe sleeve or opening in a building envelope wall, floor or ceiling assembly penetrated by a refrigerant pipe shall be sealed in an approved manner with caulking material or foam sealant or closed with a gasketing system. The caulking material, foam sealant or gasketing system shall be designed for the conditions at the penetration location and shall be compatible with the pipe, sleeve and building materials in contact with the sealing materials. Refrigerant pipes penetrating fire-resistance-rated assemblies or membranes of fire-resistance-rated assemblies shall be sealed or closed in accordance with Section 714 of the International Building Code.

BY	
NO. DATE	
SCALE	NONE
DESIGNED BY	J. McSWAIN
DRAWN BY	J. LOUNT
CHECKED BY	J. McSWAIN

Republic Refrigeration, Inc.
2810 Gray Fox Road Monroe, NC 28110
[704] 282-0399

COASTAL PACIFIC WASHINGTON

DRAWING DESCRIPTION
REFRIGERATION STANDARD DETAILS

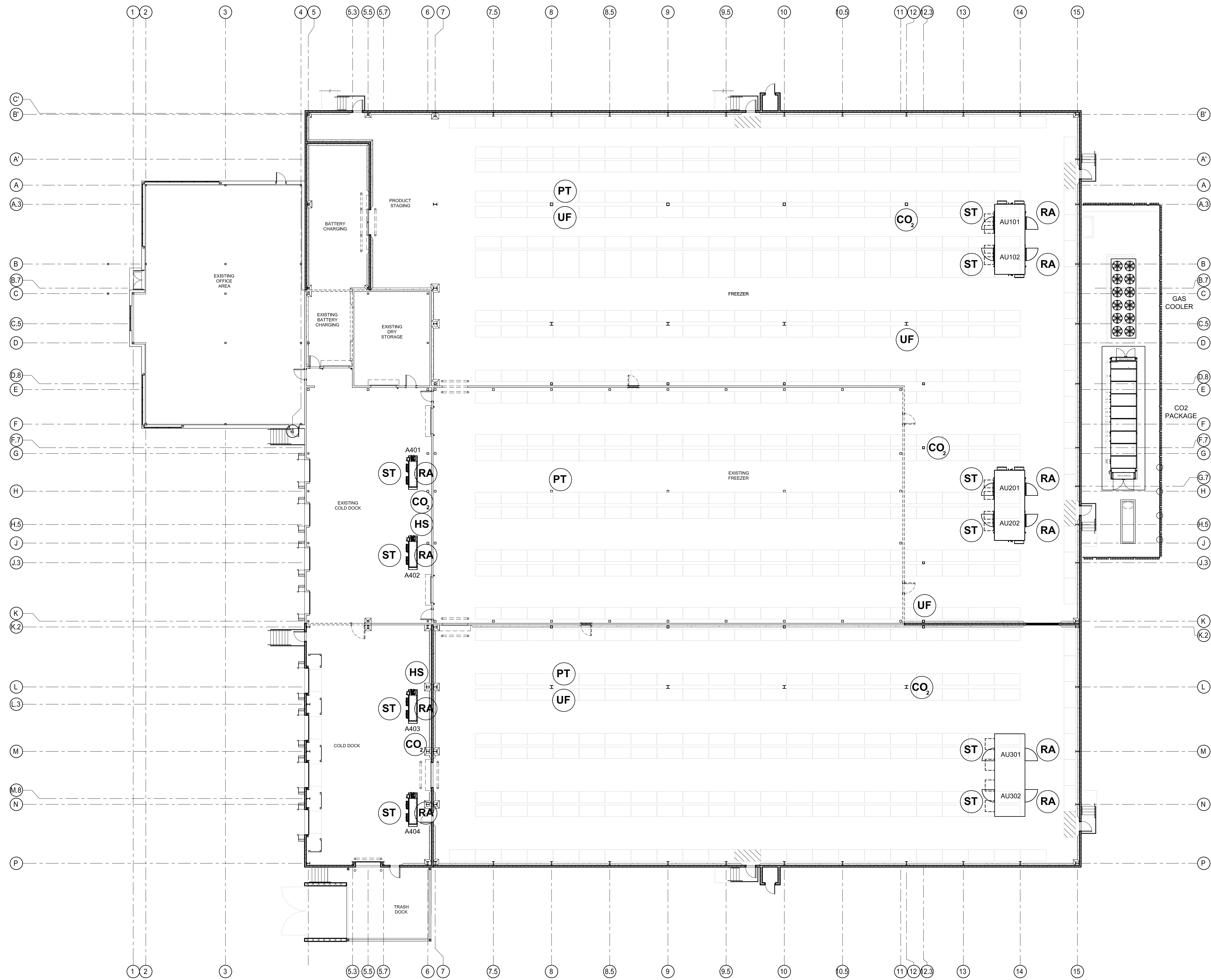
DRAWING
R8.3
1 OF 1
DATE
2/12/24
PROJECT NO.
CR2308A



City of Puyallup Development & Permitting Services ISSUED PERMIT	
Building	Planning
Engineering	Public Works
Fire	Traffic

SYMBOL LEGEND

- CO₂** CO2 DETECTOR WITH HORN AND STROBE
- ST** SUPPLY AIR TEMPERATURE SENSOR
- RA** RETURN AIR TEMPERATURE SENSOR
- PT** PRODUCT/ROOM TEMPERATURE SENSOR
- UF** UNDERFLOOR TEMPERATURE SENSOR
- HS** HUMIDITY SENSOR



REVISIONS	
NO.	DESCRIPTION
1	REFRIGERATION COORDINATION SET

SCALE	1/16"=1'-0"
DESIGNED BY	J. MCSWAIN
DRAWN BY	J. BLOUNT
CHECKED BY	J. MCSWAIN

Republic Refrigeration, Inc.
2810 Gray Fox Road, Monroe, NC 28110
[704] 282-0399

COASTAL PACIFIC WASHINGTON

DRAWING DESCRIPTION
SENSOR LAYOUT

DRAWING
RE4
1 OF 1

DATE
2/28/24

PROJECT NO.
CR2308A