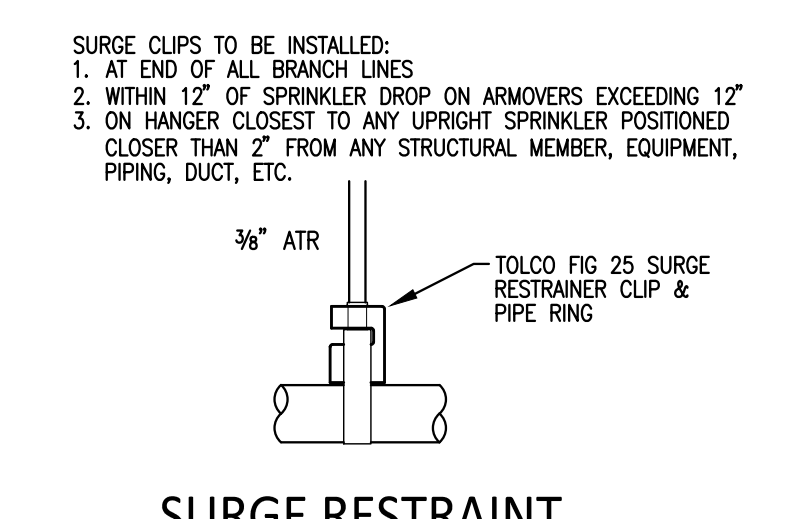
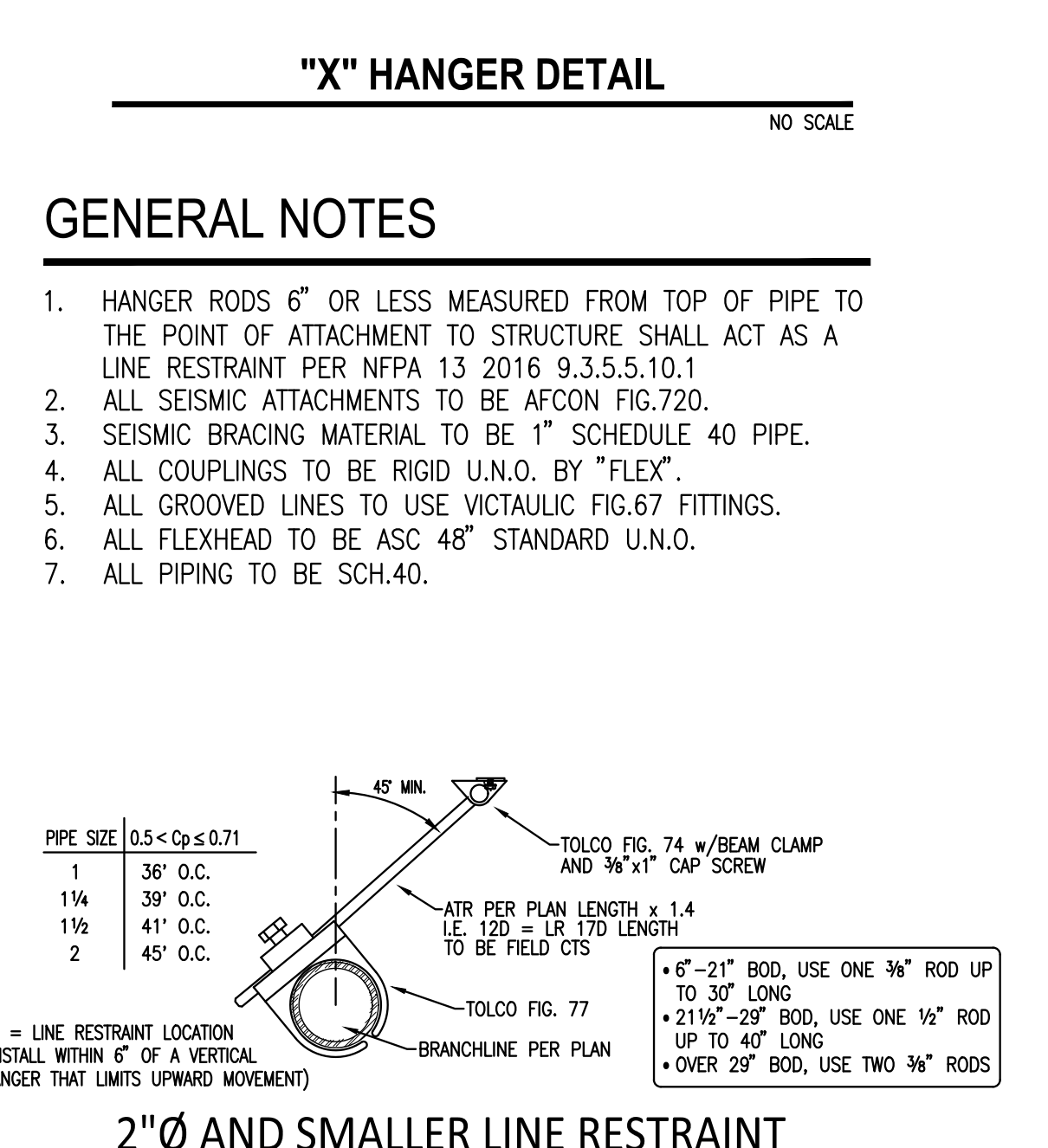
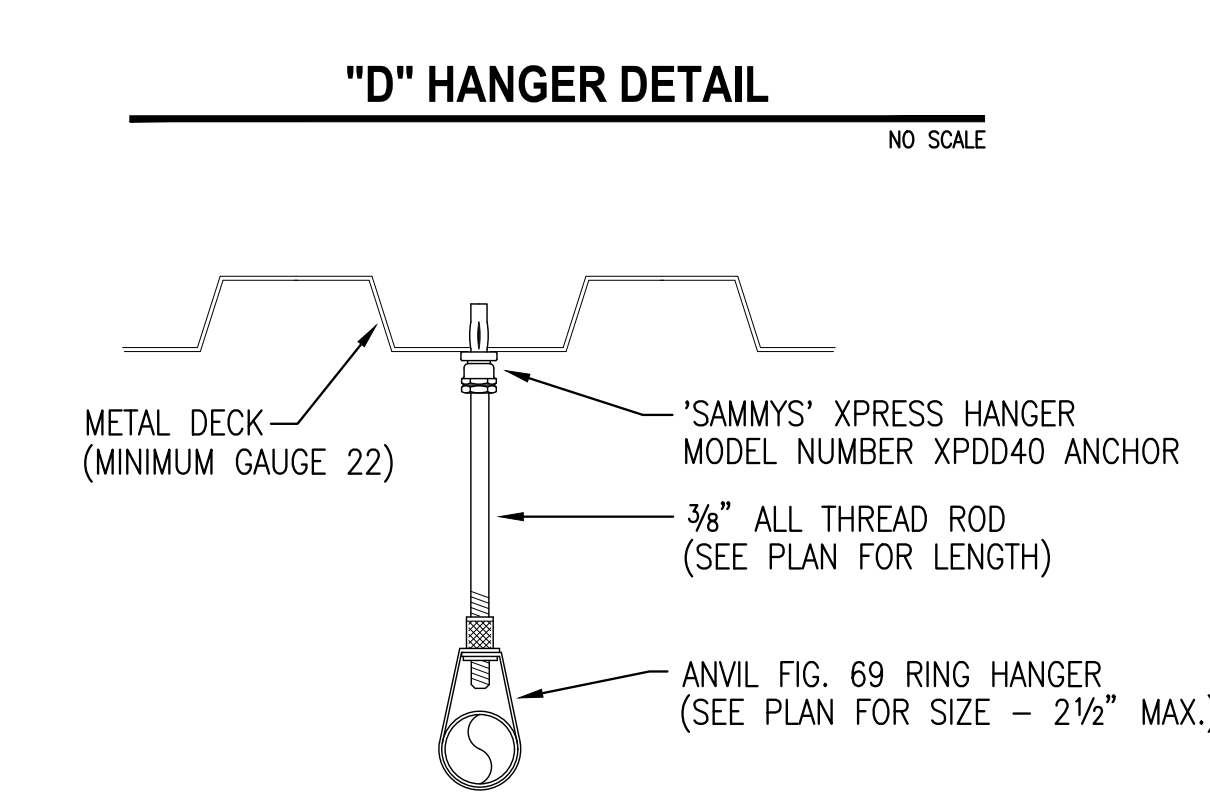
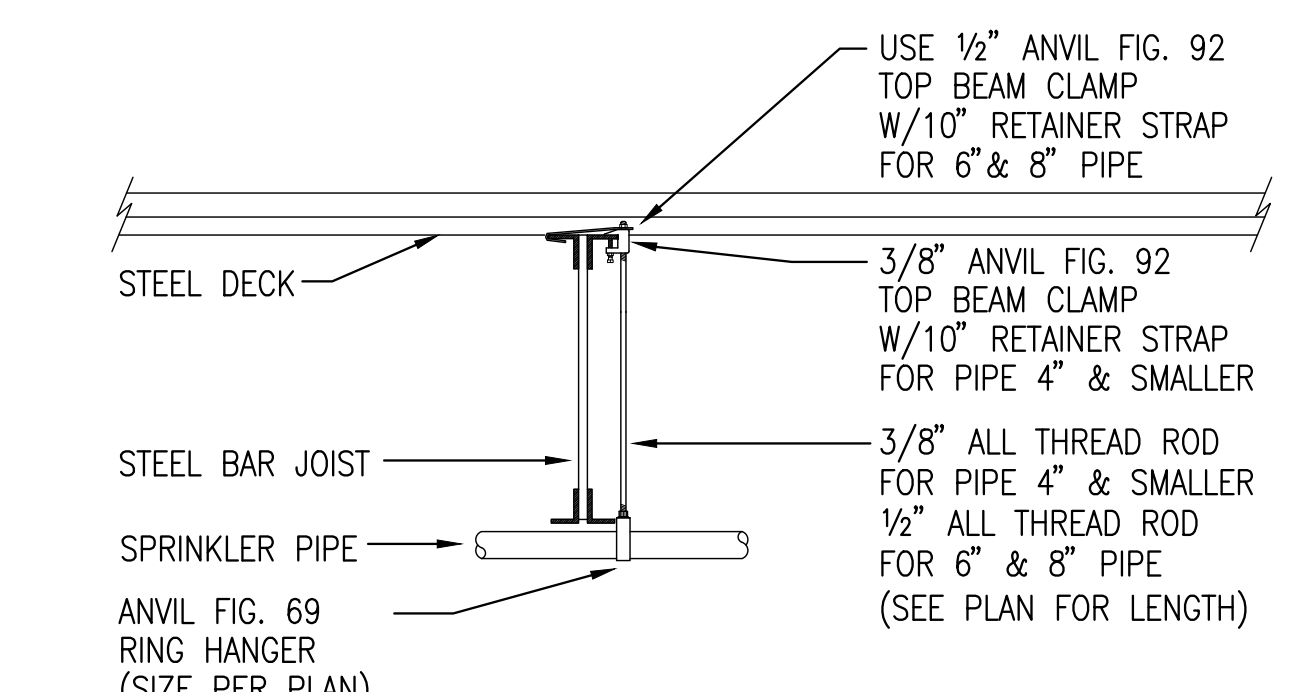
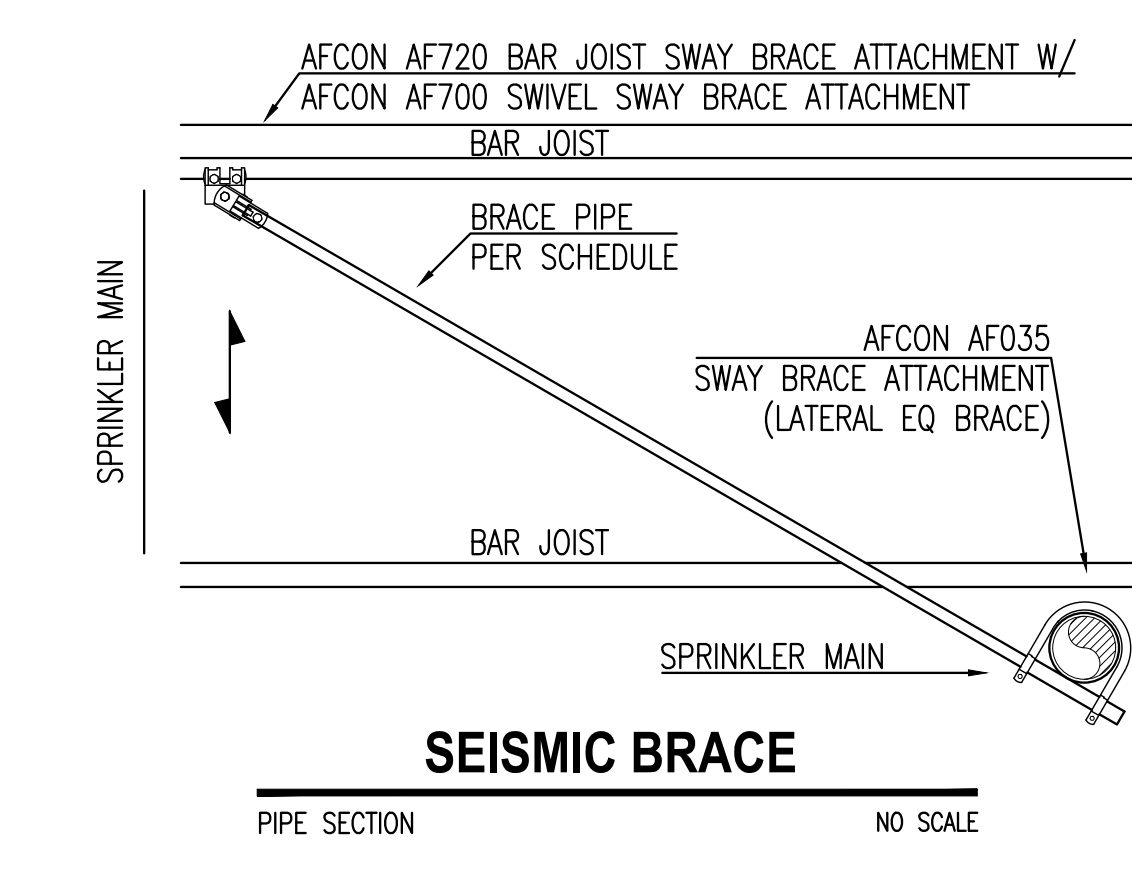
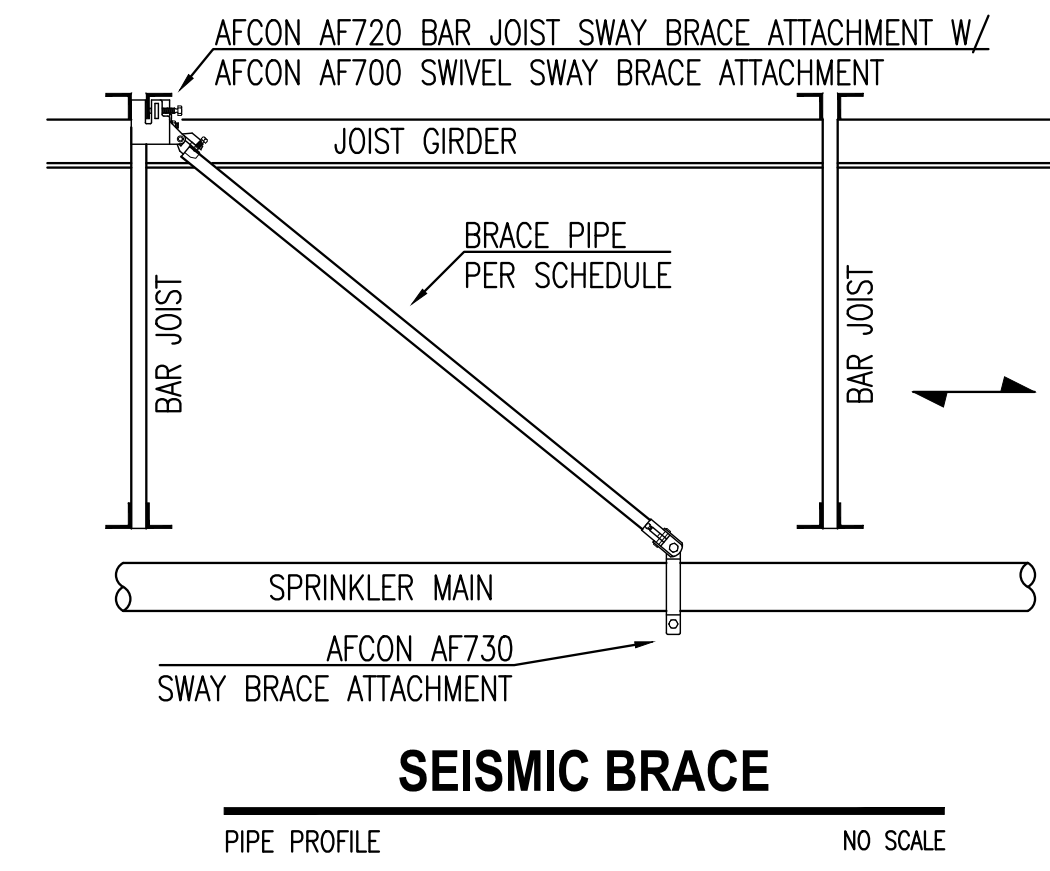


PARALLEL TO STRUCTURE							NO SCALE								
HGR. LABEL NO.	HGR. SIZE	H' HOLE DIM	'B' PIPE LENGTH	'C' SPAN	'D' PIPE SIZE & SCHEDULE	'E' HOLE SIZE	'F' HOLE DIM	HGR. LABEL NO.	HGR. SIZE	H' HOLE DIM	'B' PIPE LENGTH	'C' SPAN	'D' PIPE SIZE & SCHEDULE	'E' HOLE SIZE	'F' HOLE DIM
T1	6"	4'-0 1/2"	9'-0"	9'-0"	X" # SCH10	3/8"	6 1/2"	T2	6"	5'-2"	10'-0"	10'-0"	X" # SCH10	3/8"	6 1/2"
T3	6"	2'-8 1/2"	10'-0"	10'-0"	X" # SCH10	3/8"	6 1/2"	T4	4"	1'-10"	9'-0"	9'-0"	X" # SCH10	3/8"	6 1/2"
T5	4"	4'-2"	10'-0"	10'-0"	X" # SCH10	3/8"	6 1/2"		X"	X'-X"	X'-X"	X'-X"	X" # SCH10	3/8"	6 1/2"

TRAPEZE HANGER DETAIL

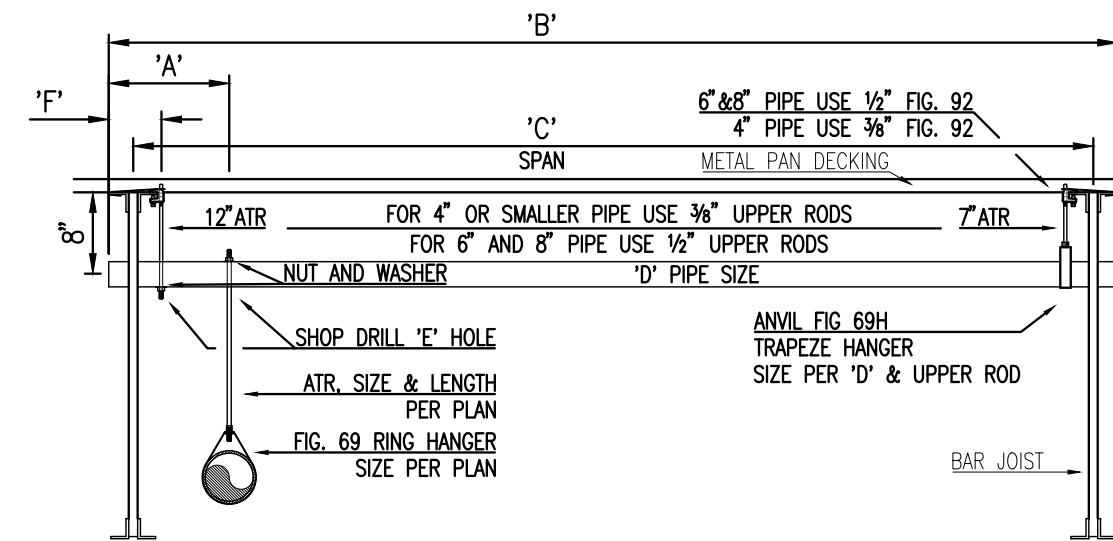
SEISMIC BRACING LEGEND								
BRACE NUMBER	SIZE OF BRACED MAIN	SIZE OF BRACE PIPE	MAX LENGTH BRACE PIPE	STRUCTURAL ATTACHMENT	MAIN ATTACHMENT	MINIMUM BRACE ANGLE	MAX SPACING	
SB-1	6"	SCH 40	1 SCH 40	7'-0"	FIG AF720	FIG AF035	45°	40'
SB-2	6"	SCH 40	1 SCH 40	7'-0"	FIG AF720	FIG AF730	45°	51'
SB-3	6"	SCH 40	1 SCH 40	7'-0"	FIG AF720	FIG AF035	45°	24'
SB-4	6"	SCH 40	1 SCH 40	7'-0"	FIG AF720	FIG AF035	45°	17'
SB-5	2 1/2"	SCH 40	1 SCH 40	7'-0"	FIG AF720	FIG AF035	45°	30'
SB-6	2 1/2"	SCH 40	1 SCH 40	7'-0"	FIG AF720	FIG AF730	45°	80'
SB-7	6"	SCH 40	1 SCH 40	7'-0"	FIG AF720	FIG AF035	45°	30'
SB-8	4"	SCH 40	1 SCH 40	7'-0"	FIG AF720	FIG AF035	45°	40'
SB-9	4"	SCH 40	1 SCH 40	7'-0"	FIG AF720	FIG AF730	45°	80'
SB-10	4"	SCH 40	1 SCH 40	7'-0"	FIG AF720	FIG AF035	60°	14'
SB-11	4"	SCH 40	1 SCH 40	7'-0"	FIG AF720	FIG AF035	45°	20'
SB-12	2"	SCH 40	1 SCH 40	7'-0"	FIG AF720	FIG AF035	45°	20'
SB-13	2"	SCH 40	1 SCH 40	7'-0"	FIG AF720	FIG AF730	45°	40'
SB-14	2 1/2"	SCH 40	1 SCH 40	7'-0"	FIG AF720	FIG AF035	45°	18'



HANGER LEGEND	
A	"U" HOOK
B	COACH SCREW ROD
C	BM. CLAMP W/ "STRAP"
D	EYELET
E	LEVEL
F	HDIP-TZ
G	CEILING FLANGE
H	SIDE BEAM BRACKET
I	SHORT CLIP
J	ALL THREAD ROD
K	TOGGLE NUT
L	POWER DRIVEN STUD
M	EXPANSION BOLT
N	PIPE SPIKE
O	TRAPEZE - SEE DETAIL
P	U
Q	V
R	W
S	X SAMMY XPRESS XPDD40
T	Z

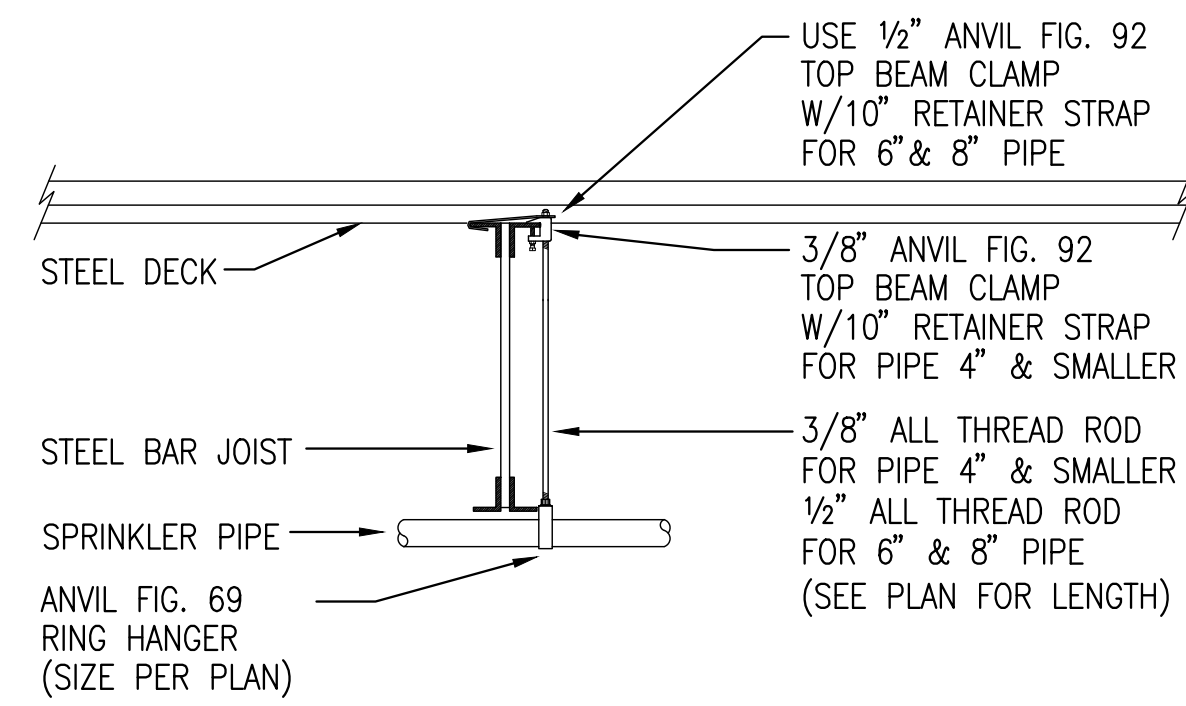
FITTING LEGEND	
P	PIPE-O-LET
SN	GROOVED SHAPED NIPPLE
TSN	THREADED SHAPED NIPPLE
ACM	ADJUSTABLE DROP NIPPLE
FLG	FLANGE
RC	REDUCING COUPLING

SPRINKLER LEGEND	
SPRINKLER ORIFICE SIZES AND TYPE	SPRINKLER SIZE
1/2" SPRAY	1/2"
3/4" SPRAY	3/4"
1" SPRAY	1"
1 1/2" SPRAY	1 1/2"
2" SPRAY	2"
2 1/2" SPRAY	2 1/2"
3" SPRAY	3"
4" SPRAY	4"
5" SPRAY	5"
6" SPRAY	6"
8" SPRAY	8"
10" SPRAY	10"
12" SPRAY	12"
15" SPRAY	15"
20" SPRAY	20"
25" SPRAY	25"
30" SPRAY	30"
36" SPRAY	36"
42" SPRAY	42"
48" SPRAY	48"
54" SPRAY	54"
60" SPRAY	60"
72" SPRAY	72"
84" SPRAY	84"
96" SPRAY	96"
108" SPRAY	108"
120" SPRAY	120"
144" SPRAY	144"
168" SPRAY	168"
192" SPRAY	192"
216" SPRAY	216"
240" SPRAY	240"
264" SPRAY	264"
288" SPRAY	288"
312" SPRAY	312"
336" SPRAY	336"
360" SPRAY	360"
384" SPRAY	384"
408" SPRAY	408"
432" SPRAY	432"
456" SPRAY	456"
480" SPRAY	480"
504" SPRAY	504"
528" SPRAY	528"
552" SPRAY	552"
576" SPRAY	576"
600" SPRAY	600"
624" SPRAY	624"
648" SPRAY	648"
672" SPRAY	672"
696" SPRAY	696"
720" SPRAY	720"
744" SPRAY	744"
768" SPRAY	768"
792" SPRAY	792"
816" SPRAY	816"
840" SPRAY	840"
864" SPRAY	864"
888" SPRAY	888"
912" SPRAY	912"
936" SPRAY	936"
960" SPRAY	960"
984" SPRAY	984"
1008" SPRAY	1008"
1032" SPRAY	1032"
1056" SPRAY	1056"
1080" SPRAY	1080"
1104" SPRAY	1104"
1128" SPRAY	1128"
1152" SPRAY	1152"
1176" SPRAY	1176"
1200" SPRAY	1200"
1224" SPRAY	1224"
1248" SPRAY	1248"
1272" SPRAY	1272"
1296" SPRAY	1296"
1320" SPRAY	1320"
1344" SPRAY	1344"
1368" SPRAY	1368"
1392" SPRAY	1392"
1416" SPRAY	1416"
1440" SPRAY	1440"
1464" SPRAY	1464"
1488" SPRAY	1488"
1512" SPRAY	1512"
1536" SPRAY	1536"
1560" SPRAY	1560"
1584" SPRAY	1584"
1608" SPRAY	1608"
1632" SPRAY	1632"
1656" SPRAY	1656"
1680" SPRAY	1680"
1704" SPRAY	1704"
1728" SPRAY	1728"
1752" SPRAY	1752"
1776" SPRAY	1776"
1800" SPRAY	1800"
1824" SPRAY	1824"
1848" SPRAY	1848"
1872" SPRAY	1872"
1896" SPRAY	1896"
1920" SPRAY	1920"
1944" SPRAY	1944"
1968" SPRAY	1968"
1992" SPRAY	1992"
2016" SPRAY	2016"
2040" SPRAY	2040"
2064" SPRAY	2064"
2088" SPRAY	2088"
2112" SPRAY	2112"
2136" SPRAY	2136"
2160" SPRAY	2160"
2184" SPRAY	2184"
2208" SPRAY	2208"
2232" SPRAY	2232"
2256" SPRAY	2256"
2280" SPRAY	2280"
2304" SPRAY	2304"
2328" SPRAY	2328"
2352" SPRAY	2352"
2376" SPRAY	2376"
2400" SPRAY	2400"
2424" SPRAY	2424"
2448" SPRAY	2448"
2472" SPRAY	2472"
2496" SPRAY	2496"
2520" SPRAY	2520"
2544" SPRAY	2544"
2568" SPRAY	2568"
2592" SPRAY	2592"
2616" SPRAY	2616"
2640" SPRAY	2640"
2664" SPRAY	2664"
2688" SPRAY	2688"
2712" SPRAY	2712"
2736" SPRAY	2736"
2760" SPRAY	2760"
2784" SPRAY	2784"
2808" SPRAY	2808"
2832" SPRAY	2832"
2856" SPRAY	2856"
2880" SPRAY	2880"
2904" SPRAY	2904"
2928" SPRAY	2928"
2952" SPRAY	2952"
2976" SPRAY	2976"
3000" SPRAY	3000"
3024" SPRAY	3024"
3048" SPRAY	3048"
3072" SPRAY	3072"
3096" SPRAY	3096"
3120" SPRAY	3120"
3144" SPRAY	3144"
3168" SPRAY	3168"
3192" SPRAY	3192"
3216" SPRAY	3216"
3240" SPRAY	3240"
3264" SPRAY	3264"
3288" SPRAY	3288"
3312" SPRAY	3312"
3336" SPRAY	3336"
3360" SPRAY	3360"
3384" SPRAY	3384"
3408" SPRAY	3408"
3432" SPRAY	3432"
3456" SPRAY	3456"
3480" SPRAY	3480"
3504" SPRAY	3504"
3528" SPRAY	3528"
3552" SPRAY	3552"
3576" SPRAY	3576"
3600" SPRAY	3600"
3624" SPRAY	3624"
3648" SPRAY	3648"
3672" SPRAY	3672"
3696" SPRAY	3696"
3720" SPRAY	3720"
3744" SPRAY	3744"
3768" SPRAY	3768"
3792" SPRAY	3792"
3816" SPRAY	3816"
3840" SPRAY	3840"
3864" SPRAY	3864"
3888" SPRAY	3888"
3912" SPRAY	3912"
3936" SPRAY	3936"
3960" SPRAY	3960"
3984" SPRAY	3984"
4008" SPRAY	4008"
4032" SPRAY	4032"
4056" SPRAY	4056"
4080" SPRAY	4080"
4104" SPRAY	4104"
4128" SPRAY	4128"
4152" SPRAY	4152"
4176" SPRAY	4176"
4200" SPRAY	4200"
4224" SPRAY	4224"
4248" SPRAY	4248"
4272" SPRAY	4272"
4296" SPRAY	4296"
4320" SPRAY	4320"
4344" SPRAY	4344"
4368" SPRAY	4368"
4392" SPRAY	4392"
4416" SPRAY	4416"
4440" SPRAY	4440"
4464" SPRAY	4464"
4488" SPRAY	4488"
4512" SPRAY	4512"
4536" SPRAY	4536"
4560" SPRAY	4560"
4584" SPRAY	4584"
4608" SPRAY	4608"
4632" SPRAY	4632"
4656" SPRAY	4656"
4680" SPRAY	4680"
4704" SPRAY	4704"
4728" SPRAY	4728"
4752" SPRAY	4752"
4776" SPRAY	4776"
4800" SPRAY	4800"
4824" SPRAY	4824"
4848" SPRAY	4848"
4872" SPRAY	4872"
4896" SPRAY	4896"
4920" SPRAY	4920"
4944" SPRAY	4944"
4968" SPRAY	4968"
4992" SPRAY	4992"
5016" SPRAY	5016"
5040" SPRAY	5040"
5064" SPRAY	5064"
5088" SPRAY	5088"
5112" SPRAY	5112"
5136" SPRAY	5136"
5160" SPRAY	5160"
5184" SPRAY	5184"
5208" SPRAY	5208"
5232" SPRAY	5232"
5256" SPRAY	5256"
5280" SPRAY	5280"
5304" SPRAY	5304"
5328" SPRAY	5328"
5352" SPRAY	5352"
5376" SPRAY	5376"
5400" SPRAY	5400"
5424" SPRAY	5424"
5448" SPRAY	5448"
5472" SPRAY	5472"
5496" SPRAY	5496"
5520" SPRAY	5520"
5544" SPRAY	5544"
5568" SPRAY	5568"
5592" SPRAY	5592"
5616" SPRAY	5616"
5640" SPRAY	5640"
5664" SPRAY	5664"
5688" SPRAY	5688"
5712" SPRAY	5712"
5736" SPRAY	5736"
5760" SPRAY	5760"
5784" SPRAY	5784"
5808" SPRAY	5808"
5832" SPRAY	5832"
5856" SPRAY	5856"
5880" SPRAY	5880"
5904" SPRAY	5904"
5928" SPRAY	5928"
5952" SPRAY	5952"
5976" SPRAY	5976"
6000" SPRAY	6000"
6024" SPRAY	6024"
6048" SPRAY	6048"
6072" SPRAY	6072"
6096" SPRAY	6096"
6120" SPRAY	6120"
6144" SPRAY	6144"
6168" SPRAY	6168"
6192" SPRAY	6192"
6216" SPRAY	6216"
6240" SPRAY	6240"
6264" SPRAY	6264"
6288" SPRAY	6288"
6312" SPRAY	6312"
6336" SPRAY	6336"
6360" SPRAY	6360"
6384" SPRAY	6384"
6408" SPRAY	6408"
6432" SPRAY	6432"
6456" SPRAY	6456"
6480" SPRAY	6480"
6504" SPRAY	6504"
6528" SPRAY	6528"
6552" SPRAY	6552"
6576" SPRAY	6576"
6600" SPRAY	6600"
6624" SPRAY	6624"
6648" SPRAY	6648"
6672" SPRAY	6672"
6696" SPRAY	6696"
6720" SPRAY	6720"
6744" SPRAY	6744"
6768" SPRAY	6768"
6792" SPRAY	6792"
6816" SPRAY	6816"
6840" SPRAY	6840"

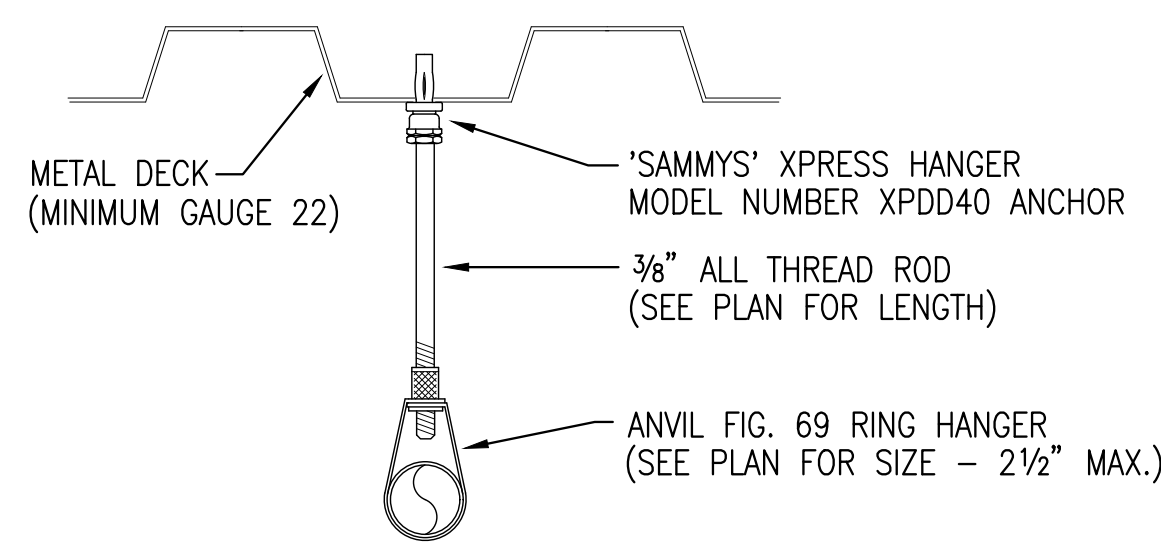


PARALLEL TO STRUCTURE		NO SCALE	
HGR. LABEL NO.	HGR. SIZE	"A" HOLE DIM	"B" PIPE LENGTH
T1	6"	4"-0 1/4"	9'-0"
T2	6"	5'-2"	10'-0"
T3	6"	2'-8 1/4"	10'-0"
T4	4"	1'-10"	9'-0"
T5	4"	4'-2"	10'-0"
T6	X	X-X	X-X

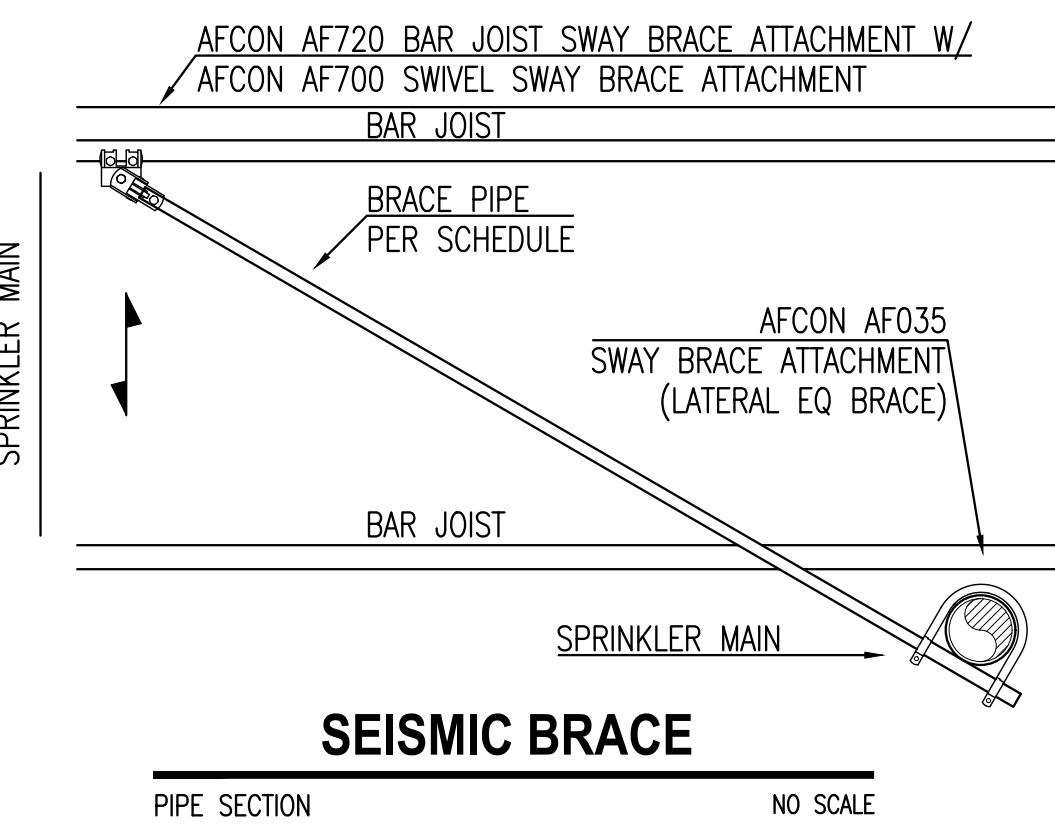
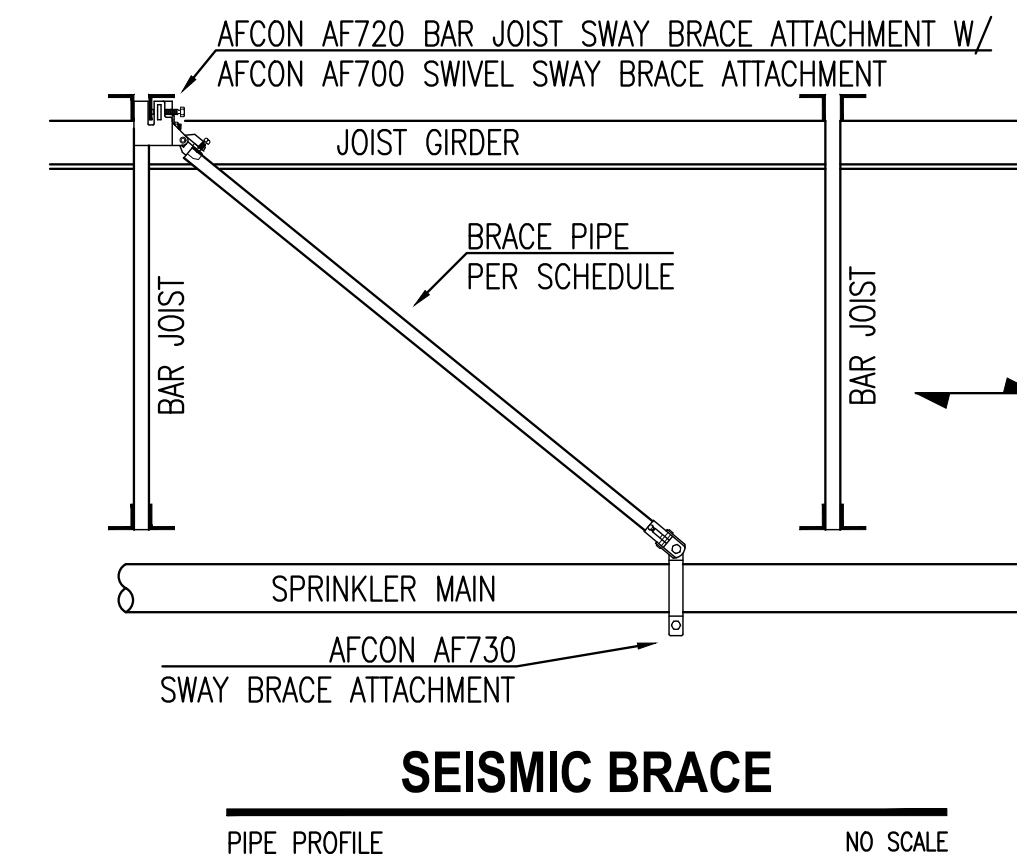
**TRAPEZOID HANGER DETAIL**  
NO SCALE



**"D" HANGER DETAIL**  
NO SCALE

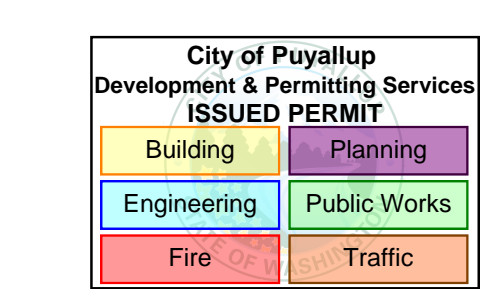
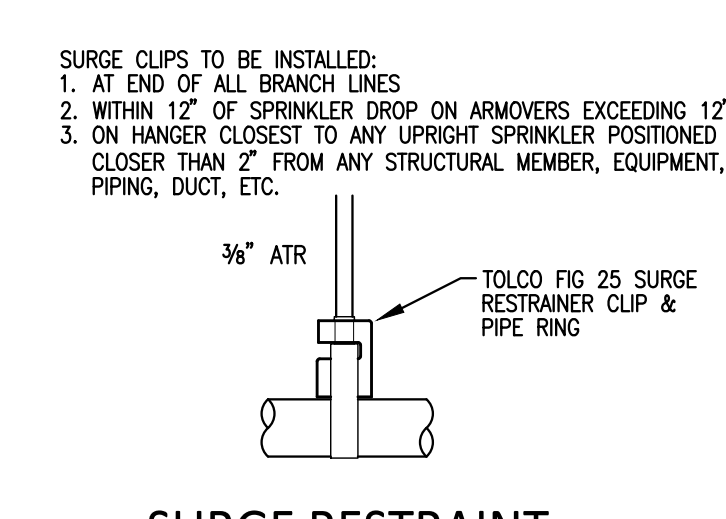
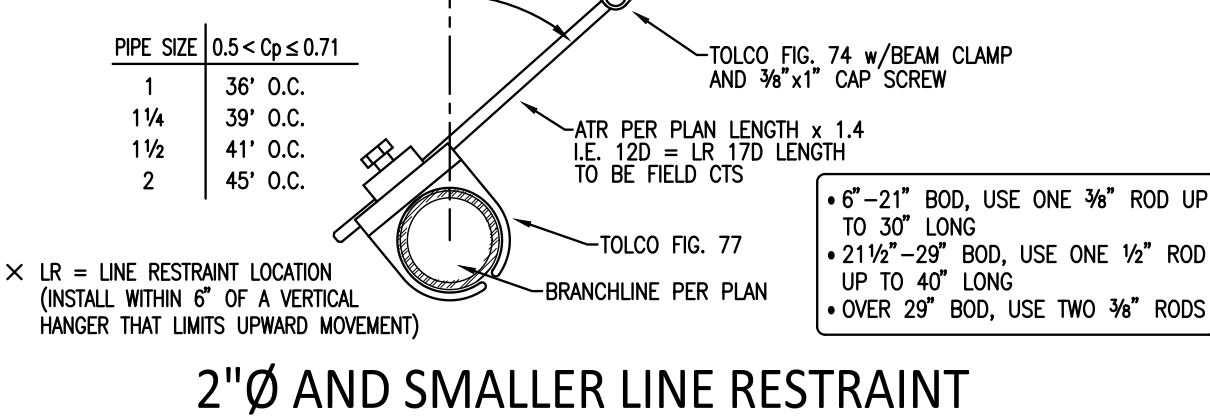


**"X" HANGER DETAIL**  
NO SCALE



**GENERAL NOTES**

- HANGER RODS 6" OR LESS MEASURED FROM TOP OF PIPE TO THE POINT OF ATTACHMENT TO STRUCTURE SHALL ACT AS A LINE RESTRAINT PER NFPA 13 2016 9.3.5.5.10.1.
- ALL SEISMIC ATTACHMENTS TO BE AFCON FIG.720.
- SEISMIC BRACING MATERIAL TO BE 1" SCHEDULE 40 PIPE.
- ALL COUPLINGS TO BE RIGID U.N.O. BY "FLEX".
- ALL GROOVED LINES TO USE VICTALIC FIG.67 FITTINGS.
- ALL FLEXHEAD TO BE ASC 48" STANDARD U.N.O.
- ALL PIPING TO BE SCH.40.



**STATE CERTIFICATION**

Commonwealth of Washington  
Department of Labor & Industries  
Division of Occupational Safety & Health  
PATRIOT FIRE PROTECTION, INC.  
11-14-24

**SPRINKLER LEGEND**

TYPE	TEMP. RATING (°F)	ORIFICE SIZE	ORIFICE TYPE	ORIFICE SIZE
1	140°	1/2"	STANDARD	1/2"
2	155°	3/4"	STANDARD	3/4"
3	175°	1"	STANDARD	1"
4	200°	1 1/4"	STANDARD	1 1/4"
5	250°	1 1/2"	STANDARD	1 1/2"
6	300°	2"	STANDARD	2"
7	325°	2 1/2"	STANDARD	2 1/2"
8	350°	3"	STANDARD	3"
9	400°	3 1/2"	STANDARD	3 1/2"
10	450°	4"	STANDARD	4"

**SPRINKLER HEAD LEGEND**

SYM	MANUF.	MODEL	SN	TYPE	HEAD	THREAD	K	HEAD	FOOTING	TEMP	OFF	
○	RELIABLE	F1-56	RA1325	SR	SSU	W2	1/2"	5.6	BRASS	-	159T	47
○	RELIABLE	KTR56	RA324	OR	SSU	W2	1/2"	5.6	BRASS	-	159T	46
○	RELIABLE	F1-56	RA1325	SR	SSU	W2	1/2"	5.6	BRASS	-	202T	11
○	RELIABLE	FT1958	RA1414	OR	RECESSED SSP	W2	1/2"	5.6	CHROME	CHROME	159T	56
○	RELIABLE	KAT17	SA1914	ESFR	PENDENT	Z1	1/2"	16.8	BRASS	-	159T	24

QUALITY CONTROL BY: DATE  
APPROVED FOR FABRICATION BY: DATE

**GENERAL NOTES**

- ALL MATERIAL AND EQUIPMENT TO BE NEW UNLESS NOTED BY THIS PERMIT.
- PIPE EMPHASIS ARE CENTER TO CENTER UNLESS NOTED BY DIMENSIONS SHOWN THEREIN (X-X) WHICH ARE END TO END.
- EXPOSURE BRACKETS SHALL BE PROVIDED IN ACCORDANCE WITH NFPA HANDBOOK NO. 13, 2016 EDITION.
- PIPE HANGERS AND METHOD OF HANGING TO BE IN ACCORDANCE WITH NFPA HANDBOOK NO. 13, 2016 EDITION.
- WORK SHALL BE IN ACCORDANCE WITH NFPA HANDBOOK NO. 13, 2016 EDITION.
- JOINING OF PIPE AND FITTINGS, THREADED & WELDED, SHALL BE IN ACCORDANCE WITH NFPA HANDBOOK NO. 13, 2016 EDITION.
- OWNER TO PROVIDE ADEQUATE HEAT IN AREAS PROTECTED BY A WET PIPE SPRINKLER SYSTEM TO PREVENT WATER IN PIPES FROM FREEZING.
- ALL WORK OF ELECTRICAL DEVICES (IF REQUIRED) TO BE PROVIDED BY OTHERS.
- PAINTING OF PIPE & EQUIPMENT (IF REQUIRED) TO BE PROVIDED BY OTHERS.
- FLUORING OF PIPE & EQUIPMENT (IF REQUIRED) TO BE PROVIDED BY OTHERS.

**DESIGN CRITERIA**

- OFFICE/CLASSROOM/HALLWAY/RESTROOMS  
LIGHT HAZARD .10/1500
- LABS/TRAINING  
ORDINARY HAZARD GROUP II .20/1500
- WAREHOUSE - STORAGE CLASS I - IV  
ESFR - 12 HEADS @ 35 PSI
- COVERED AREA - DRY SYSTEM  
ORDINARY HAZARD GROUP II .20/1950

**PIPE NOTES**

- ALL WELDED PIPE TO BE SCH.40 BLACK
- ALL THREADED PIPE TO BE SCH.40 BLACK
- SLOPE ALL DRY MAINS MIN. 1/4" PER 10'
- SLOPE ALL DRY LINES MIN. 1/2" PER 10'

**REVISIONS**

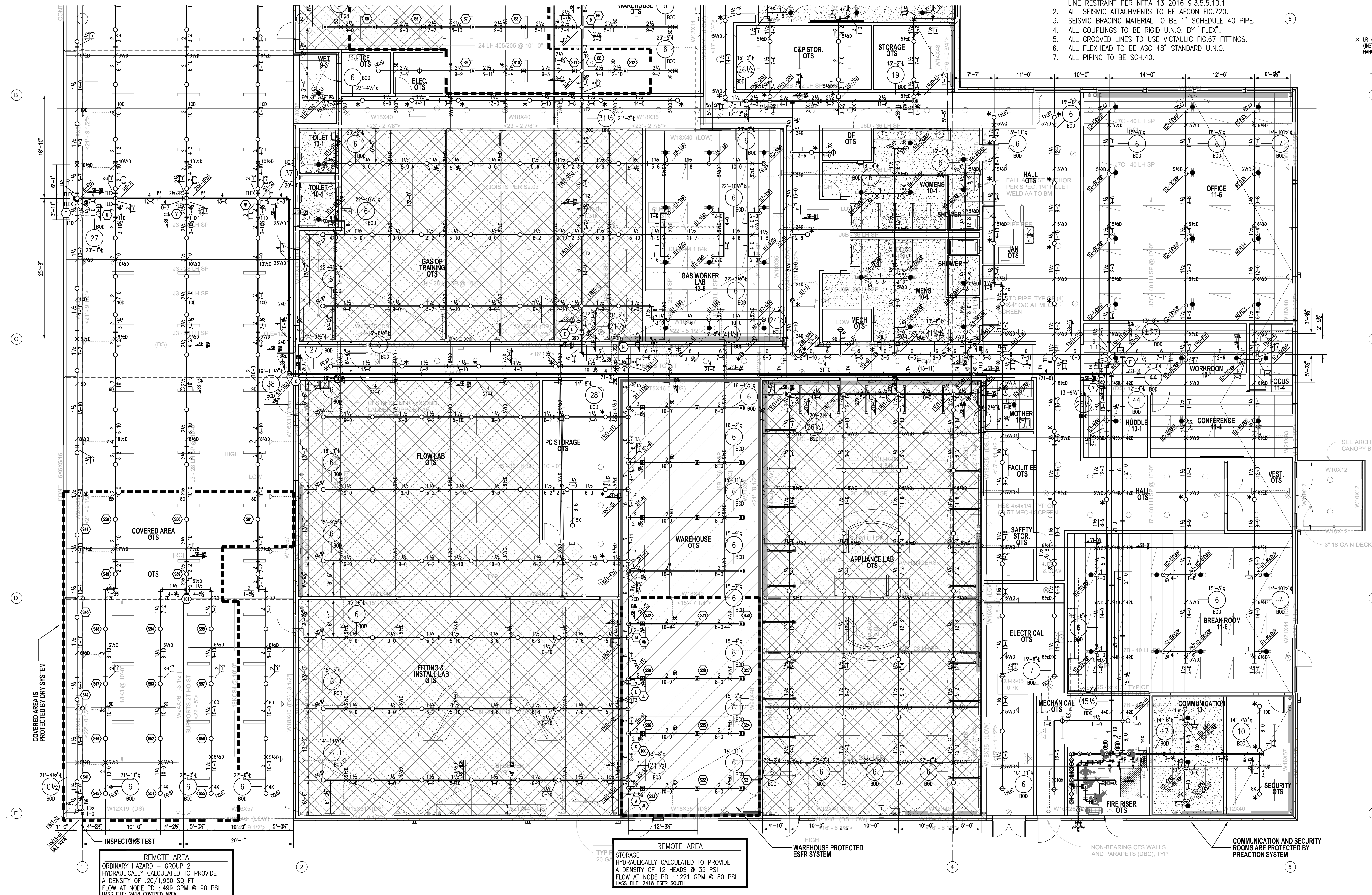
NO.	DATE	BY	DESCRIPTION

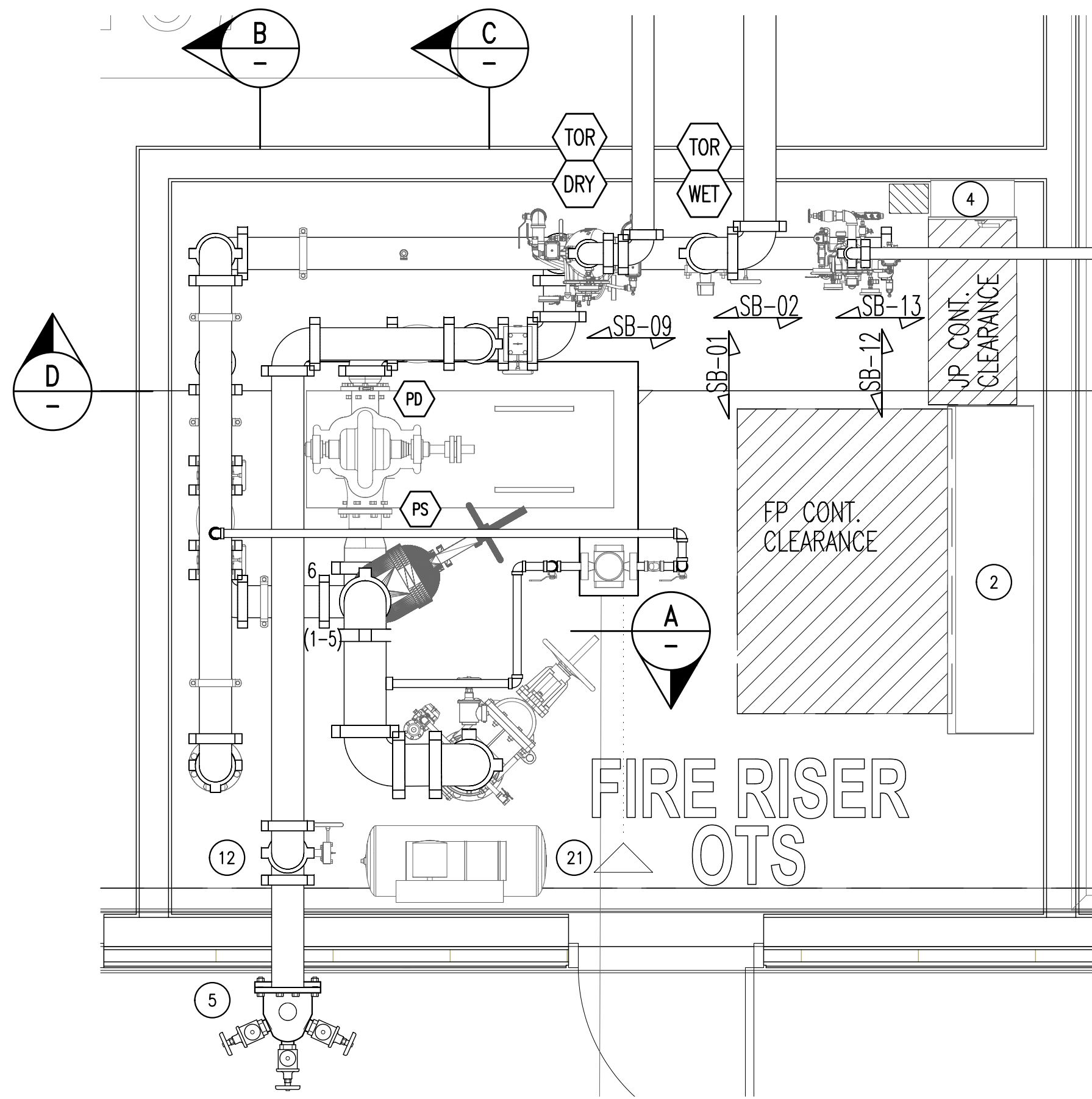
CONTRACT WITH: **PENNCON CONSTRUCTION**  
14500 GREENWOOD AVE N #A  
SHORELINE, WA 98133

PROJECT NAME: **PSE OPERATIONS TRAINING FACILITY**  
325 TODD ROAD NW  
PUYALLUP, WA 98371

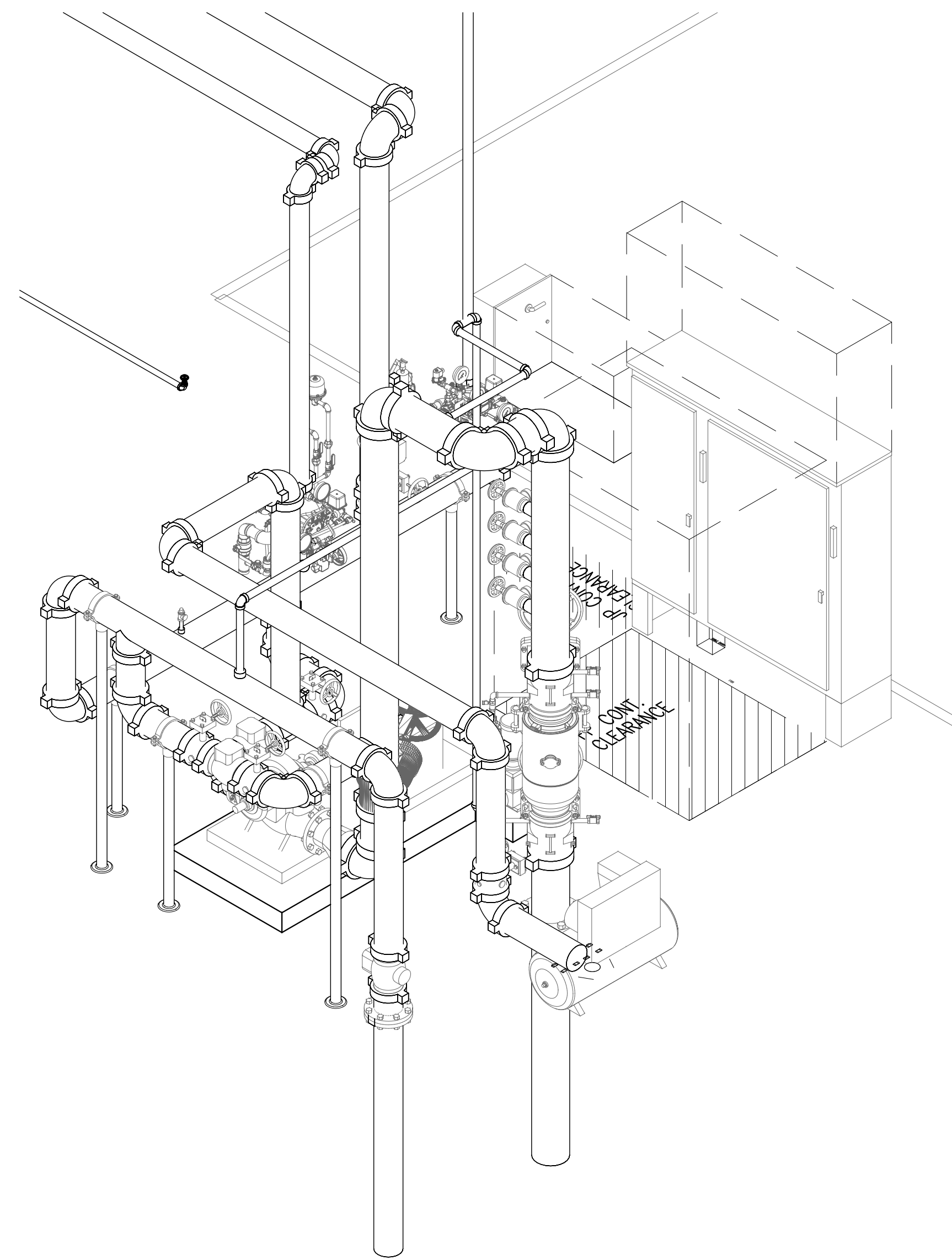
**PATRIOT FIRE PROTECTION, INC.**  
2707 70TH AVENUE EAST  
TACOMA, WA 98424  
TEL: (253) 926-2290  
FAX: (253) 922-6150

DESIGNER: **RON SHEARER** SHEET  
DATE: 11.04.24  
JOB NO.: 11-2418 3 OF 4 **FP-3**

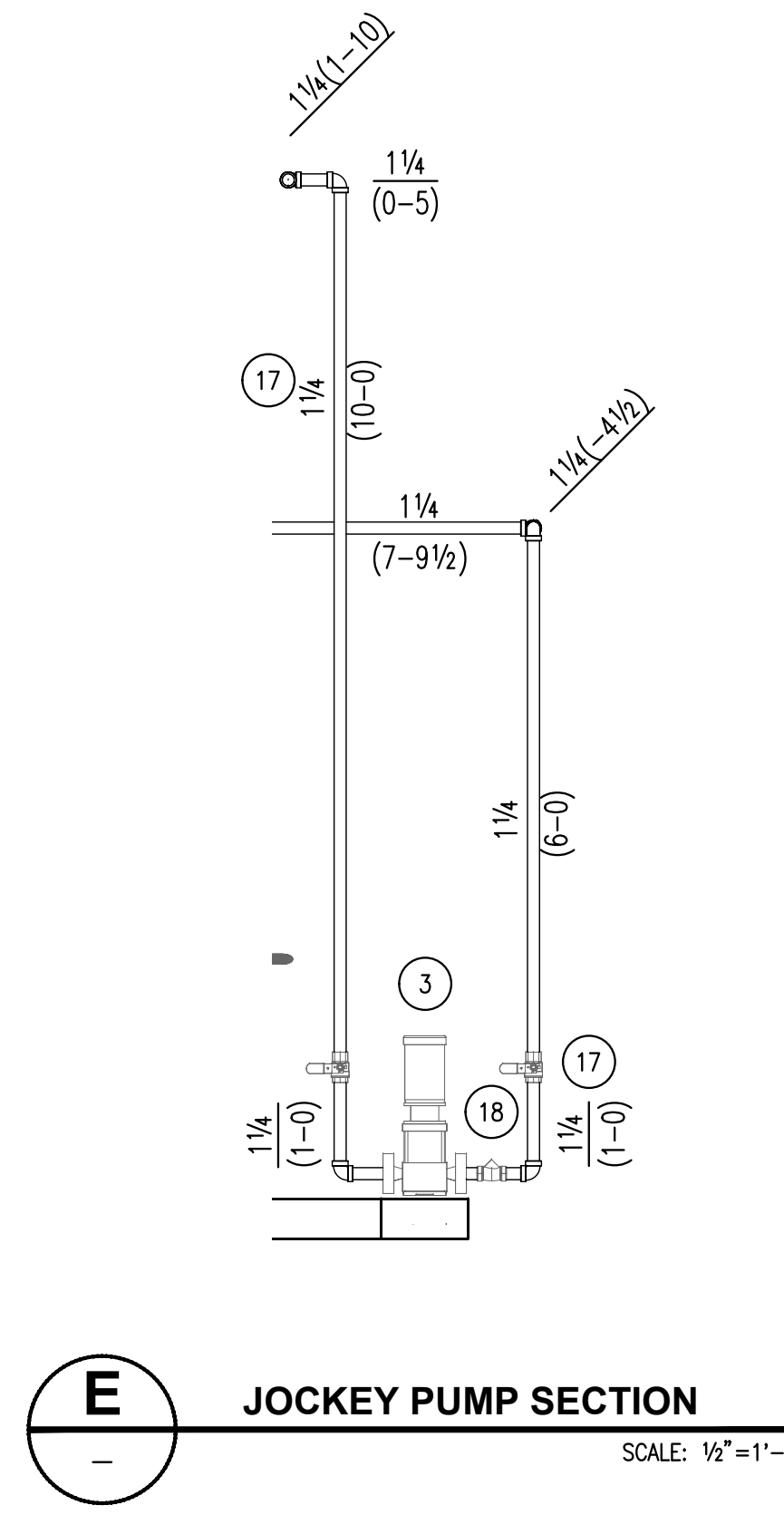




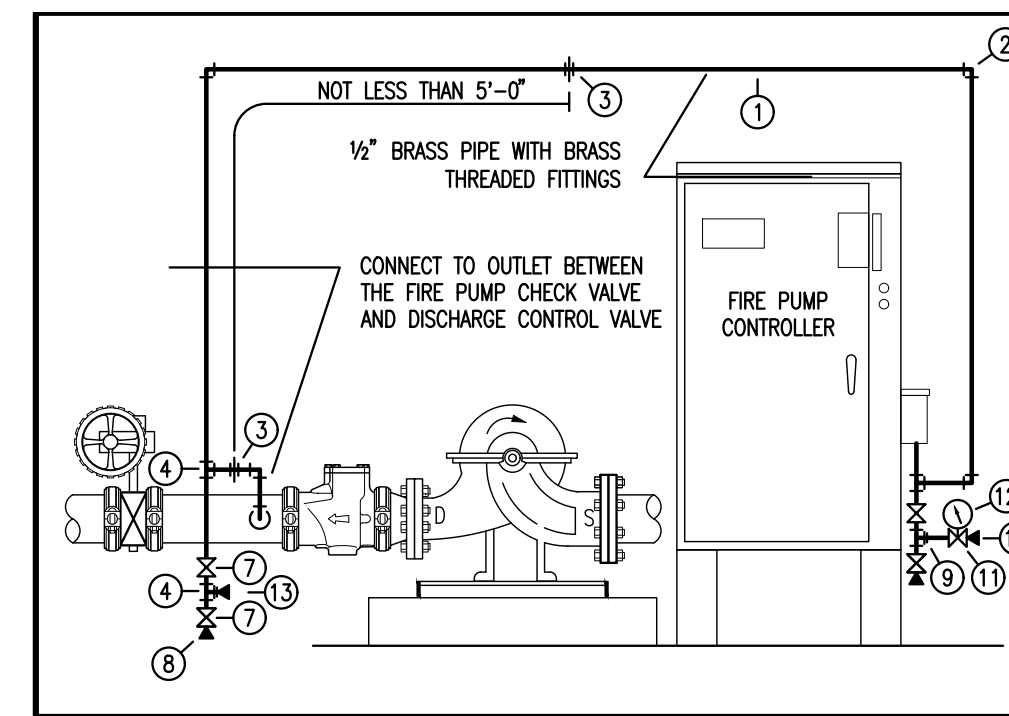
**FIRE PUMP ROOM PLAN**  
SCALE: 1/2"=1'-0"



**FIRE PUMP ROOM ISOMETRIC**  
SCALE: 1/2"=1'-0"

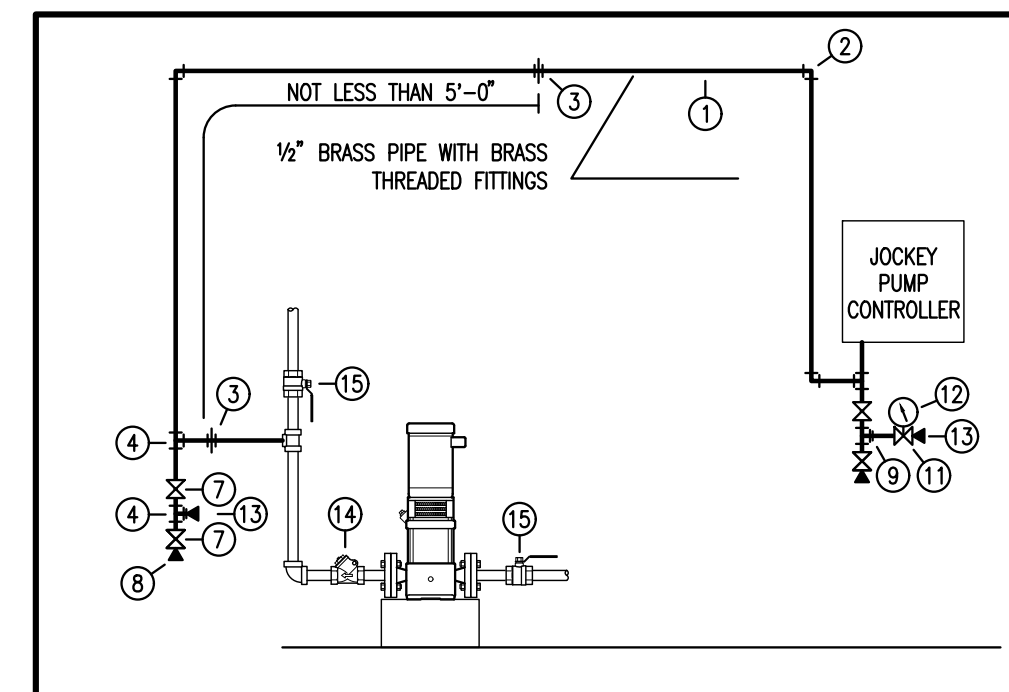


**JOCKEY PUMP SECTION**  
SCALE: 1/2"=1'-0"



ITEM	SIZE	DESCRIPTION	ITEM#	QTY.
1	1/2"	BRASS PIPE SCH. 40	40R20005	40'
2	1/2"	BRASS ELBOW	BR905	8
3	1/2"	BRASS UNION 3/4" ORIFICE	08-539	2
4	1/2"	BRASS TEE	BR75	4
5	1/2"x3/8"	BRASS NIPPLE	5X3BRN	8
6	1/2"x3/8"	BRASS NIPPLE	5X3BRN	4
7	1/2"	BRONZE BALL VALVE	5BVR	4
8	1/2"	BRASS PLUG	BRPLUG5	2
9	1/2"x1/4"	BRASS HEX BUSHING	BRH514	2
10	1/4"x3/8"	BRASS NIPPLE	1/4X3BRN	1
11	1/4"	3-WAY GAUGE VALVE	78V-25	1
12	1/4"	PRESSURE GAUGE - 300 PSI	WATERSF	1
13	1/4"	BRASS PLUG	BRPLUG14	2

**FIRE PUMP CONTROL PIPING SCHEMATIC (UP TO 200 PSI)**

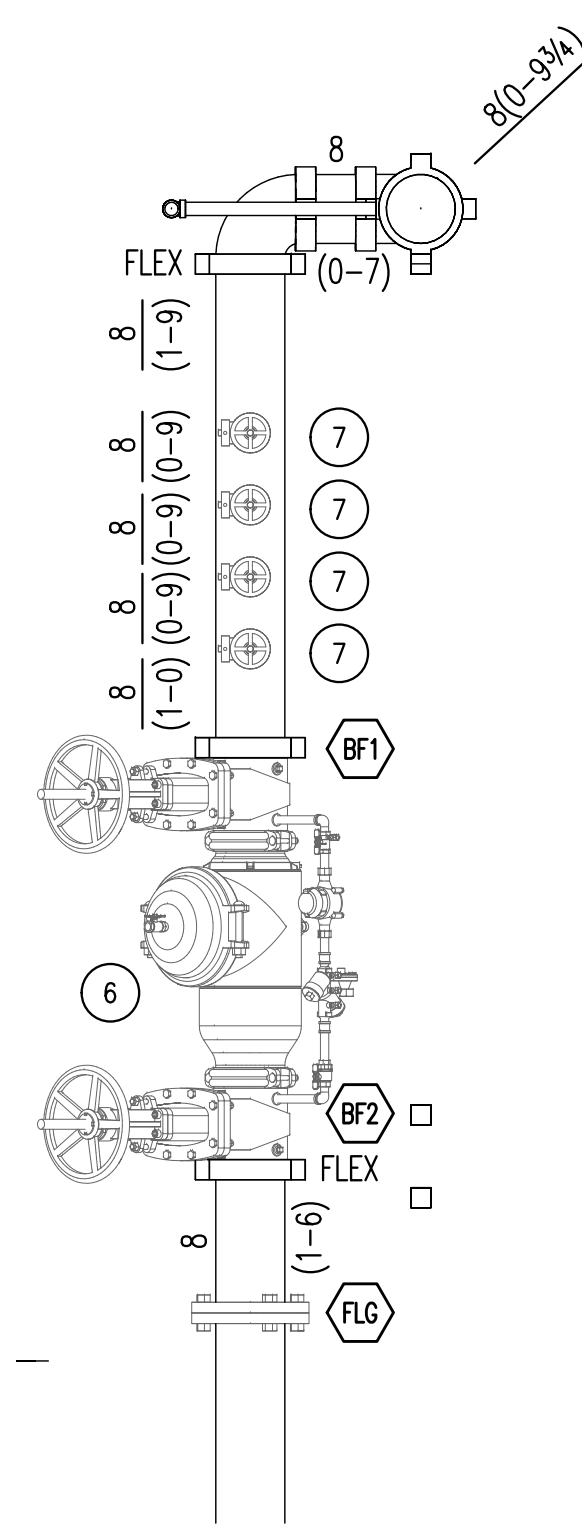


ITEM	SIZE	DESCRIPTION	ITEM#	QTY.
1	1/2"	BRASS PIPE SCH. 40	40R20005	40'
2	1/2"	BRASS ELBOW	BR905	8
3	1/2"	BRASS UNION 3/4" ORIFICE	08-539	2
4	1/2"	BRASS TEE	BR75	4
5	1/2"x3/8"	BRASS NIPPLE	5X3BRN	8
6	1/2"x3/8"	BRASS NIPPLE	5X3BRN	2
7	1/2"	BRONZE BALL VALVE	5BVR	4
8	1/2"	BRASS PLUG	BRPLUG5	2
9	1/2"x1/4"	BRASS HEX BUSHING	BRH514	2
10	1/4"x3/8"	BRASS NIPPLE	1/4X3BRN	1
11	1/4"	3-WAY GAUGE VALVE	78V-25	1
12	1/4"	PRESSURE GAUGE - 300 PSI	WATERSF	1
13	1/4"	BRASS PLUG	BRPLUG14	2
14	1/4"	BRONZE CHECK VALVE	UCO-0125	1
15	1/4"	BRONZE BALL VALVE	125BRV	2

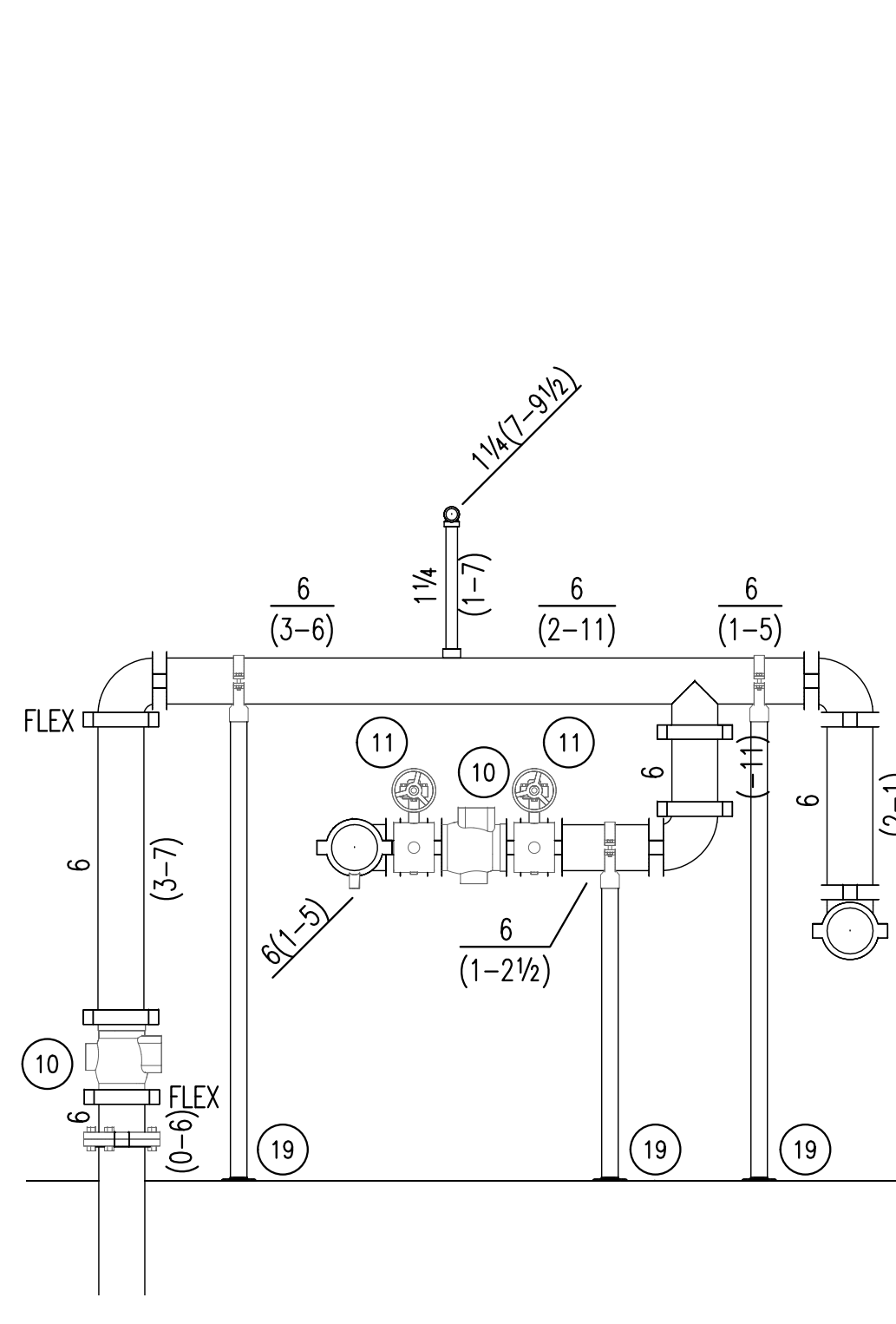
**JOCKEY PUMP CONTROL PIPING SCHEMATIC (UP TO 200 PSI)**

City of Puyallup  
Development & Permitting Services  
**ISSUED PERMIT**

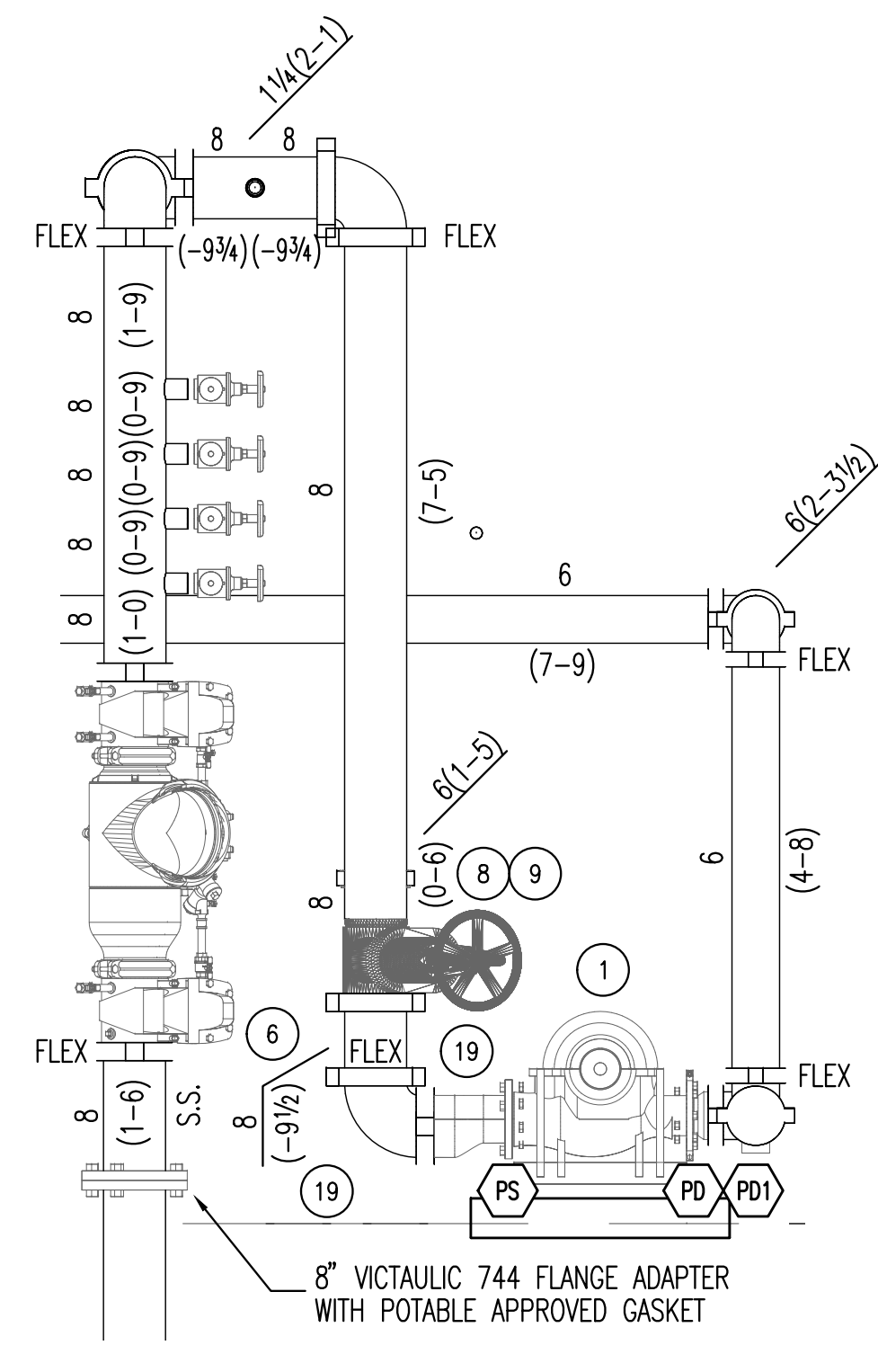
Building	Planning
Engineering	Public Works
Fire	Traffic



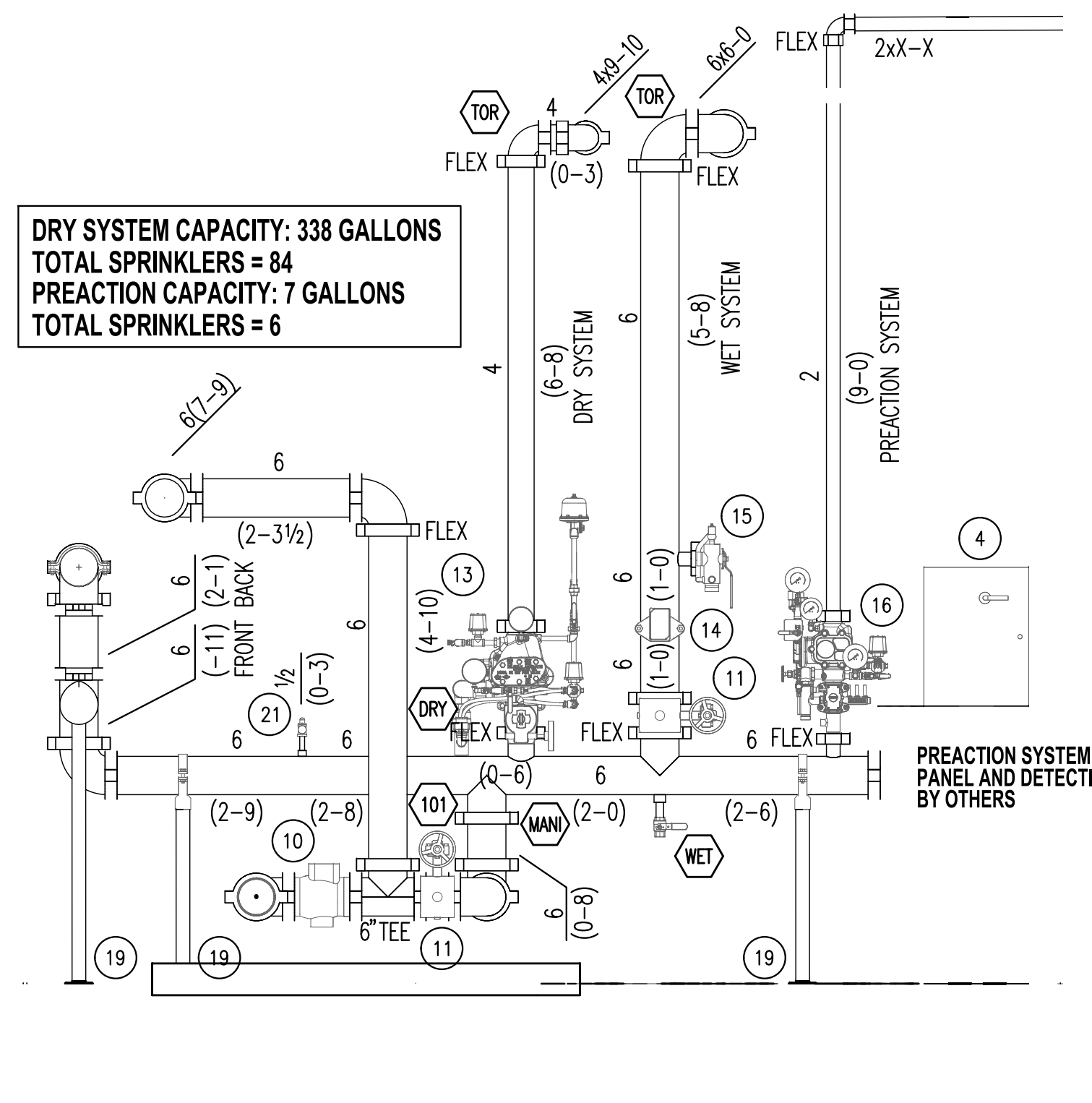
**BACKFLOW SECTION**  
SCALE: 1/2"=1'-0"



**FDC/BYPASS SECTION**  
SCALE: 1/2"=1'-0"



**PUMP SECTION**  
SCALE: 1/2"=1'-0"



**RISER MANIFOLD SECTION**  
SCALE: 1/2"=1'-0"

**DRY SYSTEM CAPACITY: 338 GALLONS**  
**TOTAL SPRINKLERS = 84**  
**PREACTION CAPACITY: 7 GALLONS**  
**TOTAL SPRINKLERS = 6**

ITEM#	SIZE	MAKE	MODEL NO.	DESCRIPTION	QTY.
①	6x5	AURORA	5-481-11C	HORIZONTAL SPLITCASE, 60 HZ, 480V, 3PH, 75HP * PUMP RATED AT 95 PSI @ 1000 GPM.	1
②	75HP	EATON	FT-90	FIRE PUMP CONTROLLER SOFT START w/ AUTO TRANSFER SWITCH*	1
③	116HP	AURORA	PWM-12	JOCKEY PUMP 480V, 3 PHASE, 116HP*	1
④	116HP	EATON	XTJL	JOCKEY PUMP CONTROLLER 116HP, 480V, 3PH *	1
⑤	6"	PENTAR	TEST HEADER	FIRE PUMP TEST HEADER WITH (4) 2 1/2" HOSE VALVES *	1
⑥	8"	WILKINS	J50A5DA	DOUBLE DETECTOR CHECK VALVE WITH GROOVED OS&Y VALVES (54W" T.O.)	1
⑦	2 1/2"	POTTER ROEMER	4065-G	HOSE VALVE FOR FORWARD FLOW TEST	4
⑧	8"	KENNEDY	7093	OS&Y VALVE WITH GROOVED ENDS (11 1/2" T.O.)	1
⑨	-	POTTER ELECTRIC	OSYSU-2	OS&Y VALVE TAMPER SWITCH	1
⑩	6"	TYCO	CV-1	GROOVED CHECK VALVE (11 1/2" T.O.)	2
⑪	6"	RELIABLE	REL363GT	GROOVED BUTTERFLY VALVE w/ INTEGRAL TAMPER SWITCH (363#)(6T.O.)	4
⑫	6"	RELIABLE	REL363GTC	GROOVED BUTTERFLY REVERSE TAMPER VALVE w/ INTEGRAL TAMPER SWITCH (363#)	1
⑬	4"	RELIABLE	FX	DRY PIPE VALVE w/FULLY ASSEMBLED TRIM (GRVD BRV, H/LDR & ALARM SWITCHES)	1
⑭	6"	POTTER	VSR	WATER FLOW SWITCH	1
⑮	2"	AGF	2511A	TEST AND DRAIN WITH PRESSURE RELIEF	1
⑯	2"	RELIABLE	DDX	SINGLE INTERLOCK PREACTION VALVE WITH FULLY ASSEMBLED TRIM (DDX" T.O.)	1
⑰	1 1/4"	RELIABLE	REL-BL	THREADED BALL VALVE 600#	2
⑱	1 1/4"	UNITED BRASS	50	THREADED SPRING CHECK VALVE 400#	1
⑲	6"x2"	PATRIOT	-	PIPE STAND	6
⑳	8"x6"	VICTAULIC	51	ECCENTRIC REDUCER	1
㉑	1HP	JENNY	K1C17UMS	AIR COMPRESSOR 1HP/115V / 17 GALLON TANK	1
㉒	1/2"	AGF	700L	PRESSURE RELIEF VALVE	1

**HANGER LEGEND**

- A "U" HOOK
- B COACH SCREW ROD
- D BM CLAMP W/ STRAP
- E EYELET
- F HDIP-TZ
- G CEILING FLANGE
- H SIDE BEAM BRACKET
- K SHORT CLIP
- M ALL THREAD ROD
- N TOGGLE NUT
- P POWDER DRIVEN STUD
- R EXPANSION BOLT
- S PIPE SPIKE
- T TRAPEZE - SEE DETAIL
- U
- V
- W
- X SAMMY XPRESS XPDD40
- Y
- Z

APPROVAL REQUIRED  
CITY OF PUYALLUP

TEMP RATING (°F)

1/2"	1"	1 1/2"	2"
1/2"	1"	1 1/2"	2"
1/2"	1"	1 1/2"	2"
1/2"	1"	1 1/2"	2"

**FITTING LEGEND**

- P PIPE-O-LET
- SN GROOVED SHAPED NIPPLE
- TSN THREADED SHAPED NIPPLE
- ASDN ADJUSTABLE DROP NIPPLE
- FLG FLANGE
- RC REDUCING COUPLING
- SC STRUCTURE TO CENTER LINE OF PIPE IN INCHES
- 2-WAY EARTHQUAKE BRACE
- 4-WAY EARTHQUAKE BRACE

**STATE CERTIFICATION**

Commonwealth of Washington  
Department of Labor & Industries  
Division of Occupational Safety & Health  
Patriot Fire Protection, Inc.  
PATRIOTFP099CF

**SPRINKLER LEGEND**

SPRINKLER ORIFICE SIZE AND TYPE	UPRIGIT	PENDANT	TELE. SIZE
1/2" SPRAY	1/2"	1/2"	1/2"
3/4" SPRAY	3/4"	3/4"	3/4"
1" SPRAY	1"	1"	1"
1 1/2" SPRAY	1 1/2"	1 1/2"	1 1/2"
2" SPRAY	2"	2"	2"
2 1/2" SPRAY	2 1/2"	2 1/2"	2 1/2"
3" SPRAY	3"	3"	3"
4" SPRAY	4"	4"	4"
5" SPRAY	5"	5"	5"
6" SPRAY	6"	6"	6"
8" SPRAY	8"	8"	8"
10" SPRAY	10"	10"	10"
12" SPRAY	12"	12"	12"
15" SPRAY	15"	15"	15"
20" SPRAY	20"	20"	20"
24" SPRAY	24"	24"	24"
30" SPRAY	30"	30"	30"
36" SPRAY	36"	36"	36"
42" SPRAY	42"	42"	42"
48" SPRAY	48"	48"	48"
54" SPRAY	54"	54"	54"
60" SPRAY	60"	60"	60"
72" SPRAY	72"	72"	72"
84" SPRAY	84"	84"	84"
96" SPRAY	96"	96"	96"
108" SPRAY	108"	108"	108"
120" SPRAY	120"	120"	120"
144" SPRAY	144"	144"	144"
168" SPRAY	168"	168"	168"
192" SPRAY	192"	192"	192"
216" SPRAY	216"	216"	216"
240" SPRAY	240"	240"	240"
270" SPRAY	270"	270"	270"
300" SPRAY	300"	300"	300"
360" SPRAY	360"	360"	360"
420" SPRAY	420"	420"	420"
480" SPRAY	480"	480"	480"
540" SPRAY	540"	540"	540"
600" SPRAY	600"	600"	600"
720" SPRAY	720"	720"	720"
840" SPRAY	840"	840"	840"
960" SPRAY	960"	960"	960"
1080" SPRAY	1080"	1080"	1080"
1200" SPRAY	1200"	1200"	1200"
1440" SPRAY	1440"	1440"	1440"
1680" SPRAY	1680"	1680"	1680"
1920" SPRAY	1920"	1920"	1920"
2160" SPRAY	2160"	2160"	2160"
2400" SPRAY	2400"	2400"	2400"
2700" SPRAY	2700"	2700"	2700"
3000" SPRAY	3000"	3000"	3000"
3600" SPRAY	3600"	3600"	3600"
4200" SPRAY	4200"	4200"	4200"
4800" SPRAY	4800"	4800"	4800"
5400" SPRAY	5400"	5400"	5400"
6000" SPRAY	6000"	6000"	6000"
7200" SPRAY	7200"	7200"	7200"
8400" SPRAY	8400"	8400"	8400"
9600" SPRAY	9600"	9600"	9600"
10800" SPRAY	10800"	10800"	10800"
12000" SPRAY	12000"	12000"	12000"
14400" SPRAY	14400"	14400"	14400"
16800" SPRAY	16800"	16800"	16800"
19200" SPRAY	19200"	19200"	19200"
21600" SPRAY	21600"	21600"	21600"
24000" SPRAY	24000"	24000"	24000"
27000" SPRAY	27000"	27000"	27000"
30000" SPRAY	30000"	30000"	30000"
36000" SPRAY	36000"	36000"	36000"
42000" SPRAY	42000"	42000"	42000"
48000" SPRAY	48000"	48000"	48000"
54000" SPRAY	54000"	54000"	54000"
60000" SPRAY	60000"	60000"	60000"
72000" SPRAY	72000"	72000"	72000"
84000" SPRAY	84000"	84000"	84000"
96000" SPRAY	96000"	96000"	96000"
108000" SPRAY	108000"	108000"	108000"
120000" SPRAY	120000"	120000"	120000"
144000" SPRAY	144000"	144000"	144000"
168000" SPRAY	168000"	168000"	168000"
192000" SPRAY	192000"	192000"	192000"
216000" SPRAY	216000"	216000"	216000"
240000" SPRAY	240000"	240000"	240000"
270000" SPRAY	270000"	270000"	270000"
300000" SPRAY	300000"	300000"	300000"
360000" SPRAY	360000"	360000"	360000"
420000" SPRAY	420000"	420000"	420000"
480000" SPRAY	480000"	480000"	480000"
540000" SPRAY	540000"	540000"	540000"
600000" SPRAY	600000"	600000"	600000"
720000" SPRAY	720000"	720000"	720000"
840000" SPRAY	840000"	840000"	840000"
960000" SPRAY	960000"	960000"	960000"
1080000" SPRAY	1080000"	1080000"	1080000"
1200000" SPRAY	1200000"	1200000"	1200000"
1440000" SPRAY	1440000"	1440000"	1440000"
1680000" SPRAY	1680000"	1680000"	1680000"
1920000" SPRAY	1920000"	1920000"	1920000"
2160000" SPRAY	2160000"	2160000"	2160000"
2400000" SPRAY	2400000"	2400000"	2400000"
2700000" SPRAY	2700000"	2700000"	2700000"
3000000" SPRAY	3000000"	3000000"	3000000"
3600000" SPRAY	3600000"	3600000"	3600000"
4200000" SPRAY	4200000"	4200000"	4200000"
4800000" SPRAY	4800000"	4800000"	4800000"
5400000" SPRAY	5400000"	5400000"	5400000"
6000000" SPRAY	6000000"	6000000"	6000000"
7200000" SPRAY	7200000"	7200000"	7200000"
8400000" SPRAY	8400000"	8400000"	8400000"
9600000" SPRAY	9600000"	9600000"	9600000"
10800000" SPRAY	10800000"	10800000"	10800000"
12000000" SPRAY	12000000"	12000000"	12000000"
14400000" SPRAY	14400000"	14400000"	14400000"
16800000" SPRAY	16800000"	16800000"	16800000"
19200000" SPRAY	19200000"	19200000"	19200000"
21600000" SPRAY	21600000"	21600000"	21600000"
24000000" SPRAY	24000000"	24000000"	24000000"
27000000" SPRAY	27000000"	27000000"	27000000"
30000000" SPRAY	30000000"	30000000"	30000000"
36000000" SPRAY	36000000"	36000000"	36000000"
42000000" SPRAY	42000000"	42000000"	42000000"
48000000" SPRAY	48000000"	48000000"	48000000"
54000000" SPRAY	54000000"	54000000"	54000000"
60000000" SPRAY	60000000"	60000000"	60000000"
72000000" SPRAY	72000000"	72000000"	72000000"
84000000" SPRAY	84000000"	84000000"	84000000"
96000000" SPRAY	96000000"	96000000"	96000000"
108000000" SPRAY	108000000"	108000000"	108000000"
120000000" SPRAY	120000000"	120000000"	120000000"
144000000" SPRAY	144000000"	144000000"	144000000"
168000000" SPRAY	168000000"	168000000"	168000000"
192000000" SPRAY	192000000"	192000000"	192000000"
216000000" SPRAY	216000000"	216000000"	216000000"
240000000" SPRAY	240000000"	240000000"	240000000"
270000000" SPRAY	270000000"	270000000"	270000000"
300000000" SPRAY	300000000"	300000000"	300000000"
360000000" SPRAY	360000000"	360000000"	360000000"
420000000" SPRAY	420000000"	420000000"	420000000"
480000000" SPRAY	480000000"	480000000"	480000000"
540000000" SPRAY	540000000"	540000000"	540000000"
600000000" SPRAY	600000000"	600000000"	600000000"
720000000" SPRAY	720000000"	720000000"	720000000"
840000000" SPRAY	840000000"	840000000"	840000000"
960000000" SPRAY	960000000"	960000000"	960000000"
1080000000" SPRAY	1080000000"	1080000000"	1080000000"</