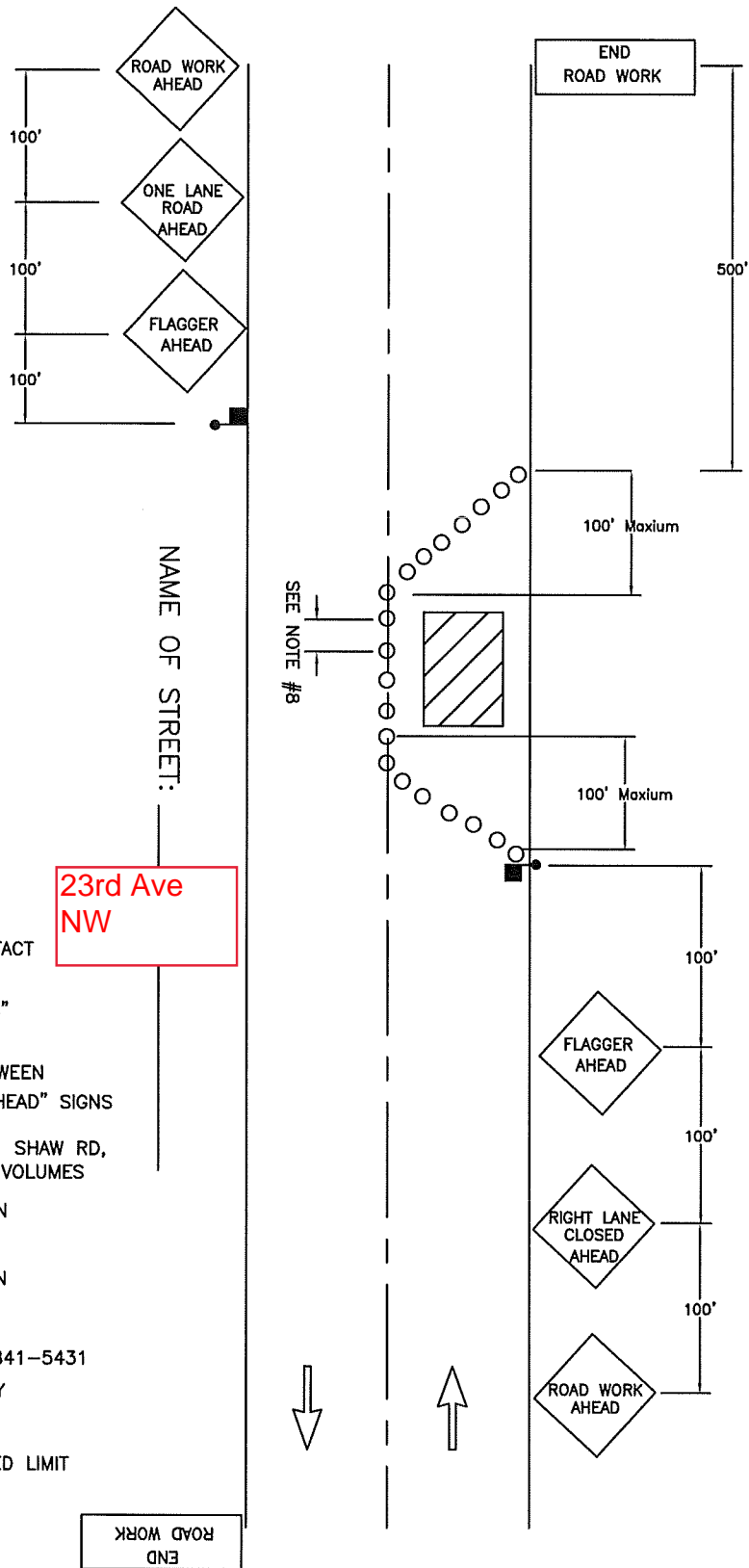


City of Puyallup Development & Permitting Services ISSUED PERMIT	
Building	Planning
Engineering	Public Works
Fire	Traffic



**NOTES:**

- 1 FOR TWO-WAY TRAFFIC WORK ZONES
- 2 FLAGGERS SHALL REMAIN IN RADIO CONTACT AT ALL TIMES
- 3 TRAFFIC CONTROL DEVICES SHALL BE 28" RETROREFLECTIVE CONES
- 4 USE "BE PREPARED TO STOP" SIGN BETWEEN "FLAGGER AHEAD" AND "LANE CLOSED AHEAD" SIGNS ON HIGH VOLUME ROADS, SUCH AS: 43RD AVE SE, 9TH ST SW, 5TH ST SW, SHAW RD, AND OTHER STREETS WITH COMPARABLE VOLUMES
- 5 SIGN SPACING SHALL BE 350 FEET WHEN SPEED LIMIT IS GREATER THAN 30 MPH
- 6 SIGN SPACING SHALL BE 100 FEET WHEN SPEED LIMIT IS 30 MPH OR LESS
- 7 CALL COMM CENTER DAY OF CLOSURE 841-5431
  - 7.1 CLOSURE FOR WEEKDAYS ONLY
  - 7.2 TIMES: 9:00 AM TO 3:00 PM
- 8 DISTANCE BETWEEN CONES EQUALS SPEED LIMIT IN UNITS OF FEET

23rd Ave NW

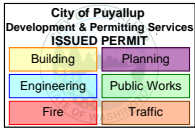
END ROAD WORK



**CITY OF  
PUYALLUP  
TRAFFIC  
ENGINEERING  
DIVISION**

**LANE CLOSURE ON TWO-LANE  
ROAD USING FLAGGERS**

DRAWN J. HUNTER	PLOTTING SCALE NTS/ 1=1	DATE APPROVED 04-03	REVISED 09-30-09	TCP STANDARD
FILE NAME I:\DRAWINGS\PUBLIC WORKS\TRAFFIC\TCP	CHECKED BY M. FORD	REVISED BY S. TANDLE	NO. 7	

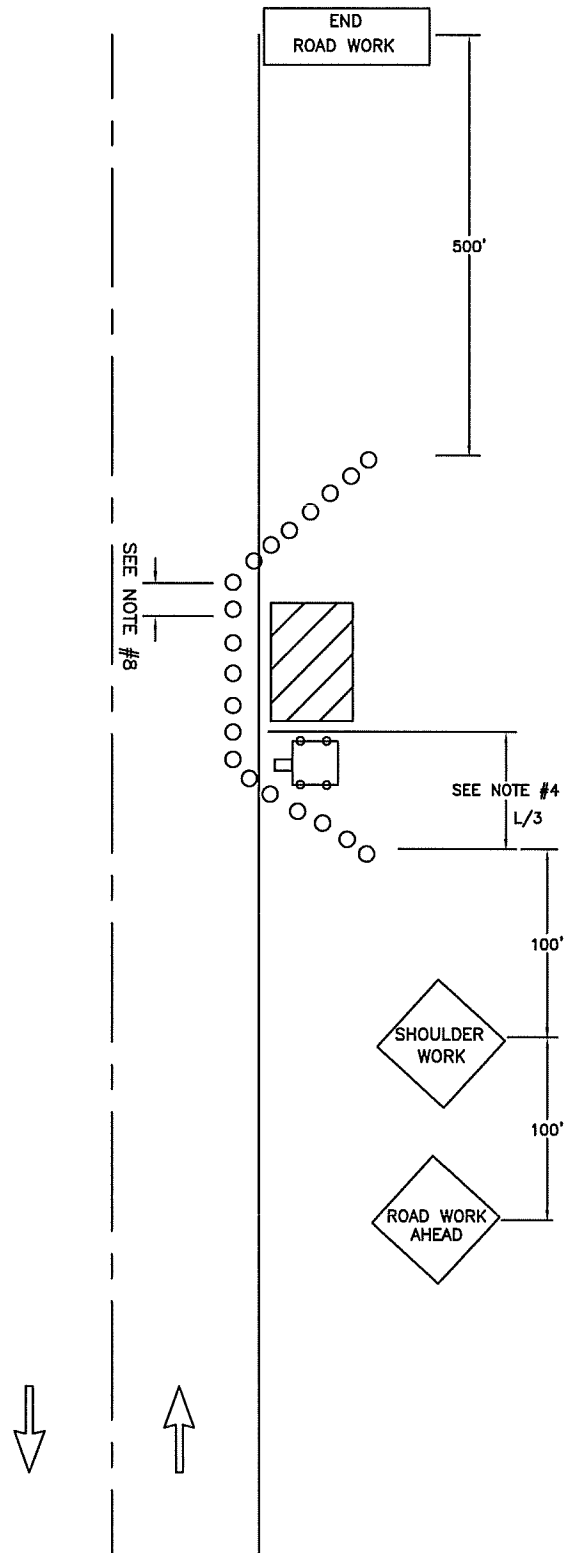


NAME OF STREET:

23rd Ave NW

**NOTES:**

- 1 FOR SHOULDER WORK ZONES
- 2 VEHICLE TO PROTECT WORKZONE
- 3 TRAFFIC CONTROL DEVICES SHALL BE 28" RETROREFLECTIVE CONES
- 4 TAPER LENGTH EQUALS WIDTH OF OFFSET  
TIMES SPEED LIMIT SQUARED DIVIDED BY 60  
$$L = \frac{WS^2}{60}$$
- 5 SIGN SPACING SHALL BE 100 FEET WHEN SPEED LIMIT IS 30 MPH OR LESS
- 6 SIGN SPACING SHALL BE 350 FEET WHEN SPEED LIMIT IS GREATER THAN 30 MPH
- 7 CALL COMM CENTER DAY OF CLOSURE 841-5431  
7.1 CLOSURE FOR WEEKDAYS ONLY
- 8 DISTANCE BETWEEN CONES EQUALS SPEED LIMIT IN UNITS OF FEET
- 9. TRAVEL LANE WIDTH MUST BE 11'(FT) MINIMUM



**CITY OF PUYALLUP  
TRAFFIC ENGINEERING  
DIVISION**

**SHOULDER CLOSURE**

DRAWN J. HUNTER	PLOTTING SCALE NTS/ 1=1	DATE APPROVED 04-03	REVISED 02/10/11	TCP STANDARD
FILE NAME I:\DRAWINGS\PUBLIC WORKS\TRAFFIC\TCP	CHECKED BY M. FORD	REVISED BY S. TANDLE	<b>NO. 11</b>	