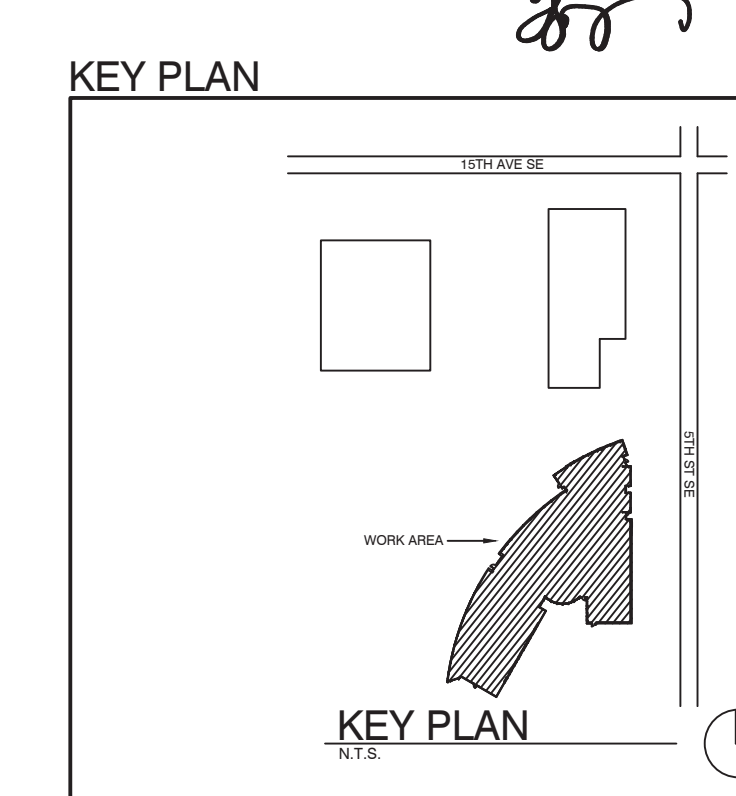


MULTICARE GSH NOTIFICATION
 402 15TH AVE SE
 PUYALLUP, WA 98372
 PARCEL # 7790000566

A DEVICE LOCATION VIEWS - FIRST LEVEL
 SCALE: 1/8" = 1'-0"

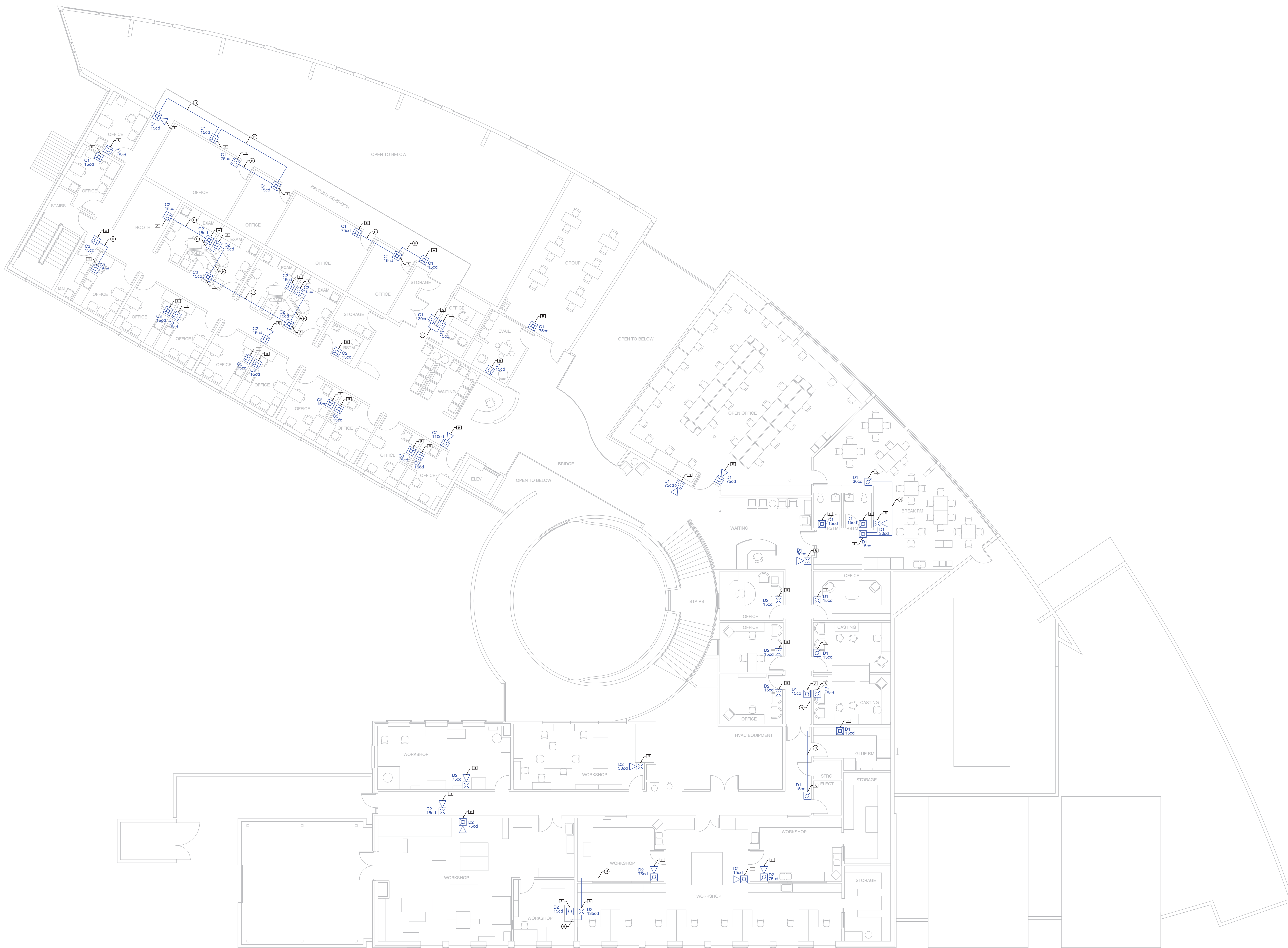
LOUIS LYNN
 FIRE ALARM SYSTEMS III
 SPECIAL HAZARDOUS II
 WATER BASED SYSTEMS LAYOUT III
 CERT # 119284
 EXP # 1/25



ISSUE LOG	DATE	DESCRIPTION

CONSTRUCTION SET	
DESIGNER:	SCOTT PERKINS
ISSUE DATE:	8/3/23
PROJECT #:	FA22088
SYSTEM:	FIRE ALARM
SHEET:	
LOCATION VIEWS	
FA101	

ISSUE LOG	DATE	DESCRIPTION



B DEVICE LOCATION VIEWS - SECOND LEVEL
 SCALE: 1/8" = 1'-0"

LOUIS LYNN
 FIRE ALARM SYSTEMS III
 SPECIAL HAZARDOUS II
 WATER-BASED SYSTEMS LAYOUT II
 CERT #119284
 EXP 4/1/25

LL

KEY PLAN

CONSTRUCTION SET

DESIGNER:	SCOTT PERKINS
ISSUE DATE:	8/3/23
PROJECT #:	FA22088
SYSTEM:	FIRE ALARM
SHEET:	LOCATION VIEWS

FA102