

Staff: NComstock  
Date: 04/10/2025

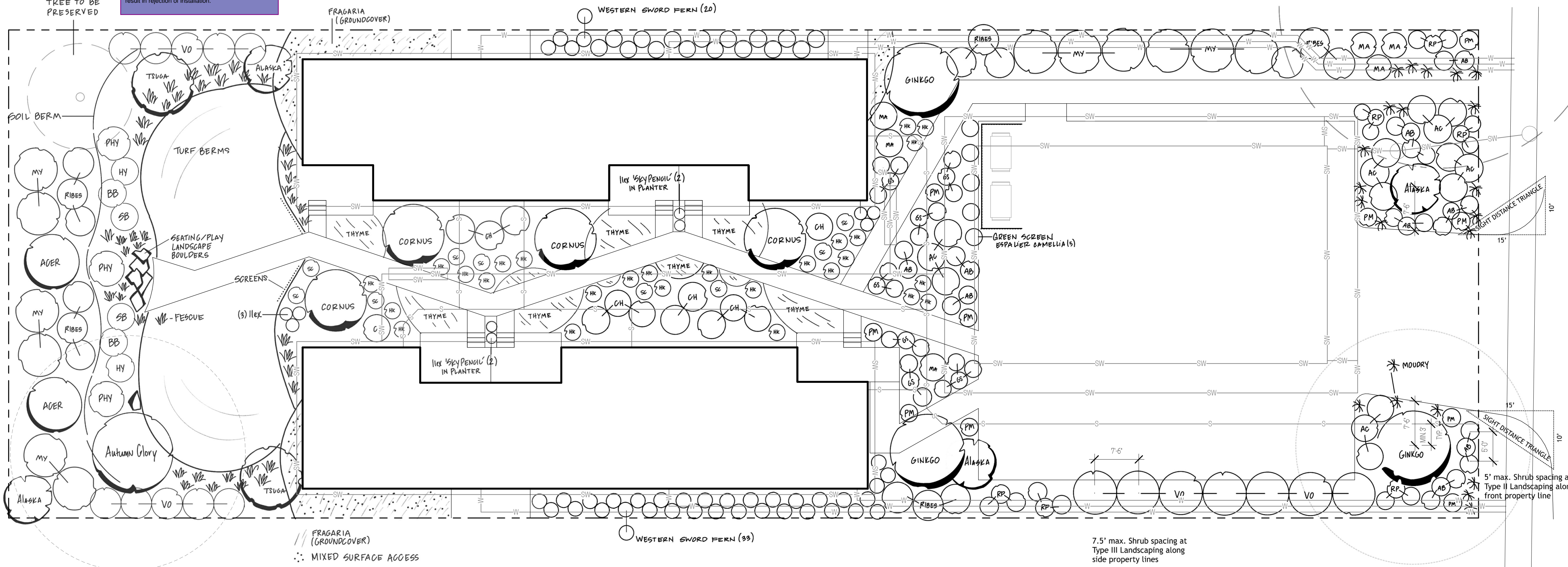
THIS APPROVAL IS VOID AFTER 180 DAYS FROM APPROVAL DATE. THE CITY IS NOT RESPONSIBLE FOR ERRORS OR OMISSIONS ON THESE PLANS. FIELD CONDITIONS MAY DICTATE CHANGES TO THESE PLANS AS DETERMINED BY THE PLANNING DIRECTOR, DESIGNEE, OR PROJECT PLANNER.

NOTE: If street trees are required, Call Planning Division for final inspection. (253) 864-4165 (Option 3) Root barriers are required around street trees in accordance with city standard detail. Top soil shall be installed in accordance with city standards - field verification required. Failure to install top soil and root barriers in accordance with the city standards may result in rejection of installation.

**City of Puyallup  
Development & Permitting Services  
ISSUED PERMIT**

Building	Planning
Engineering	Public Works
Fire	Traffic

EXIST'G CHERRY TREE TO BE PRESERVED



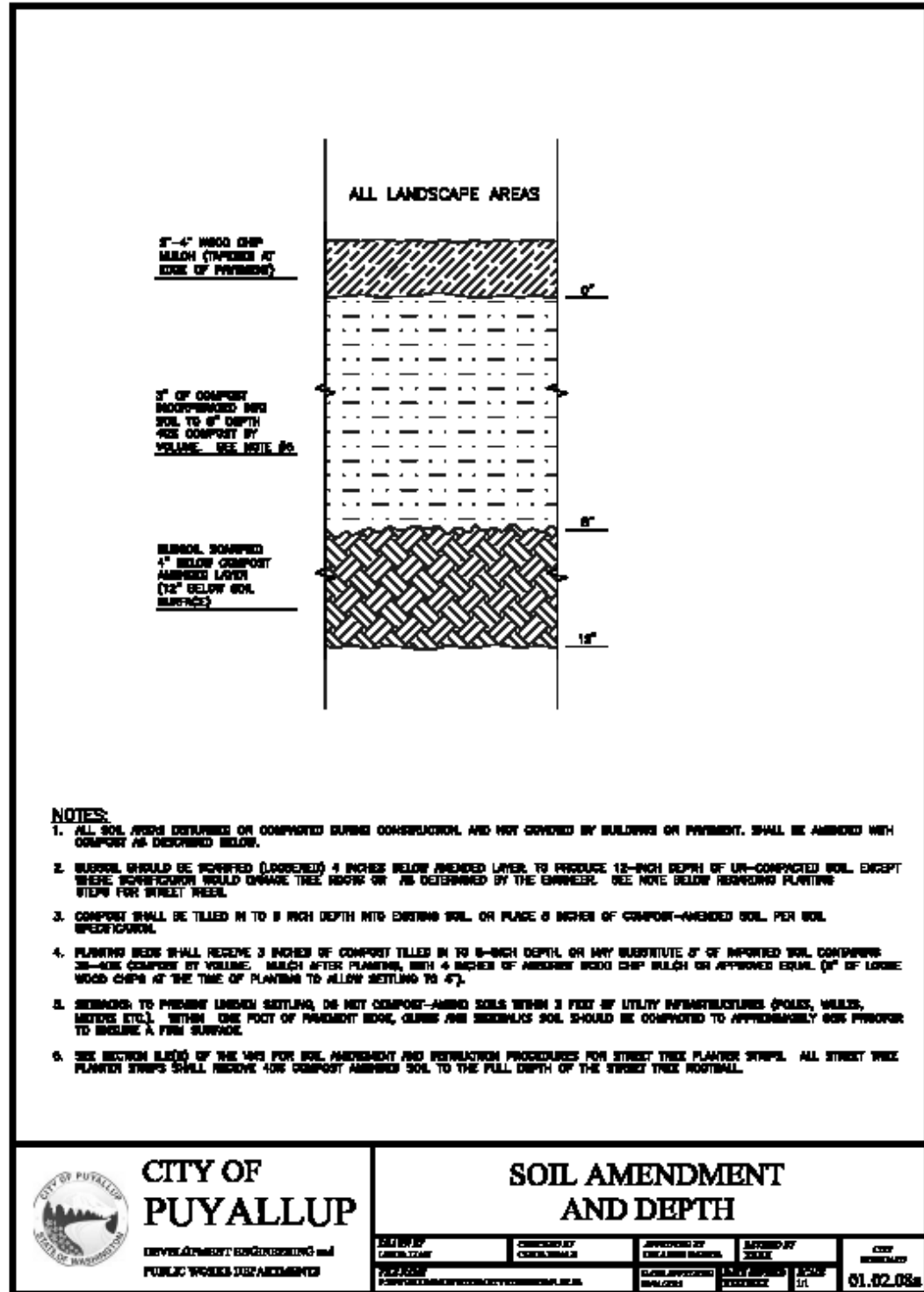
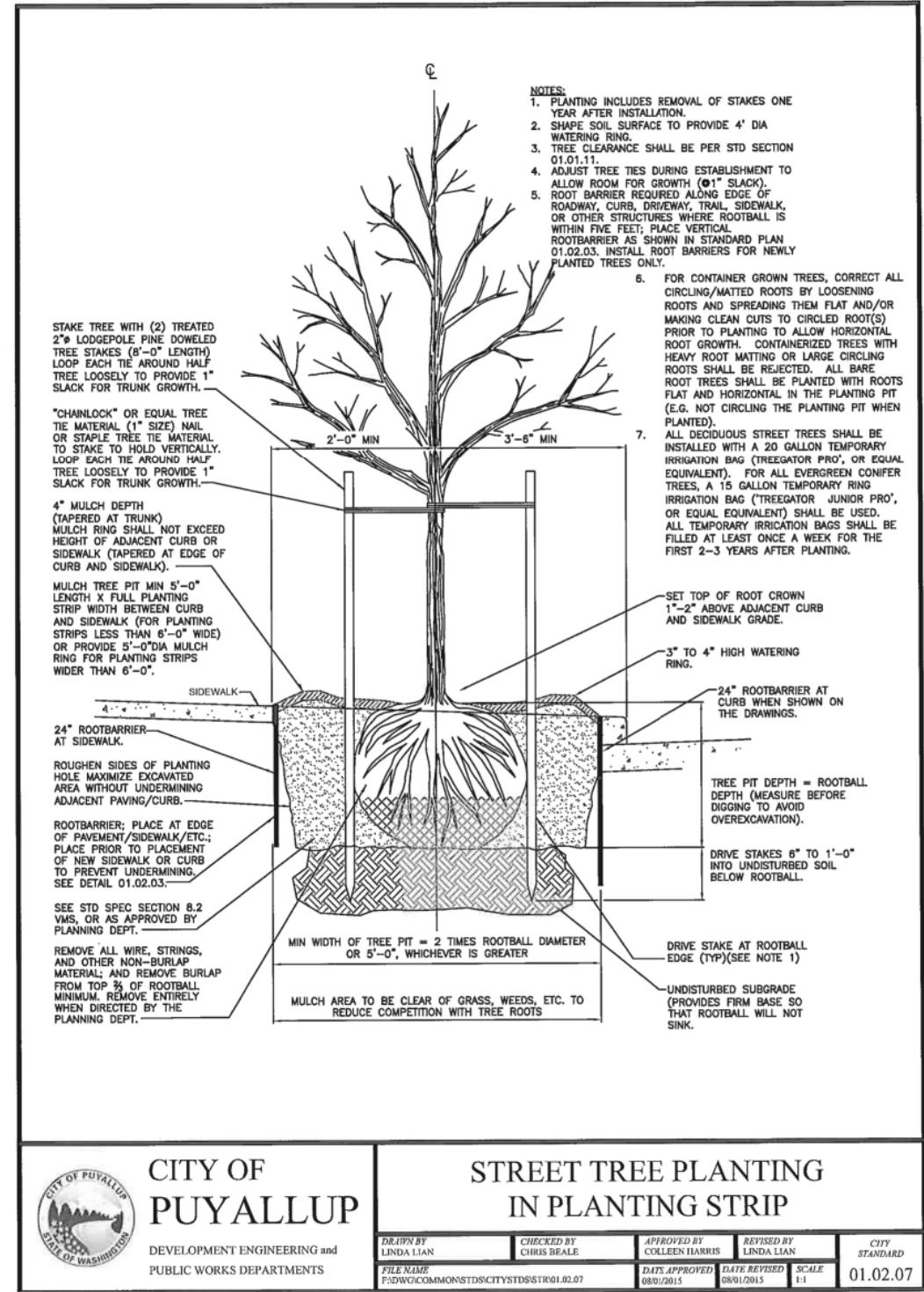
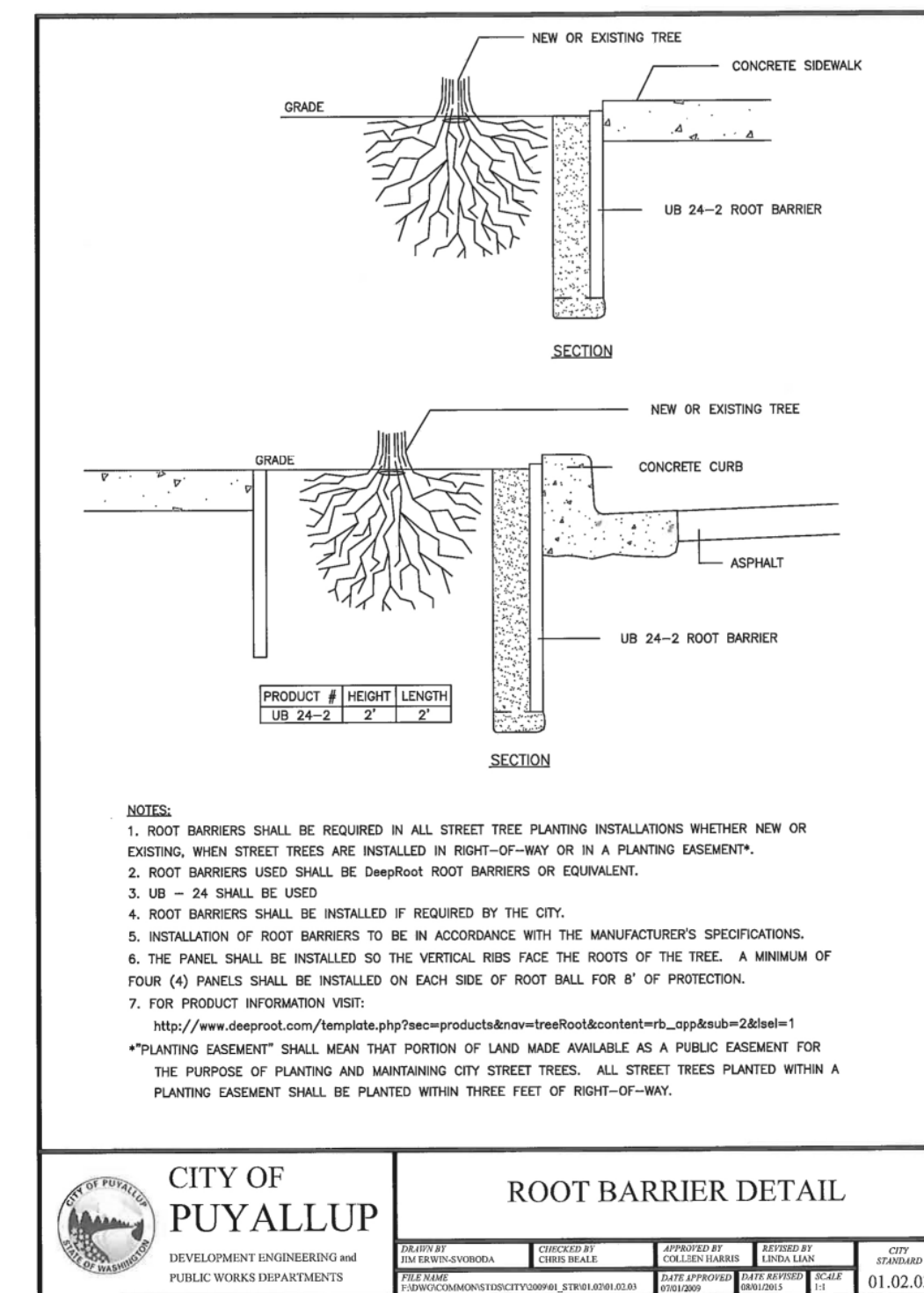
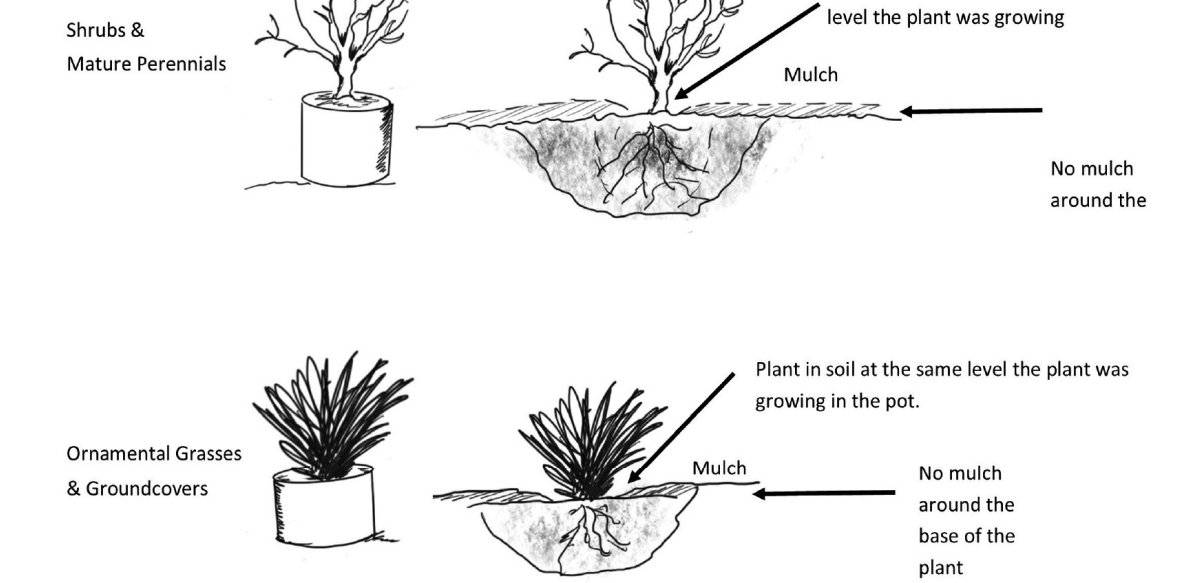
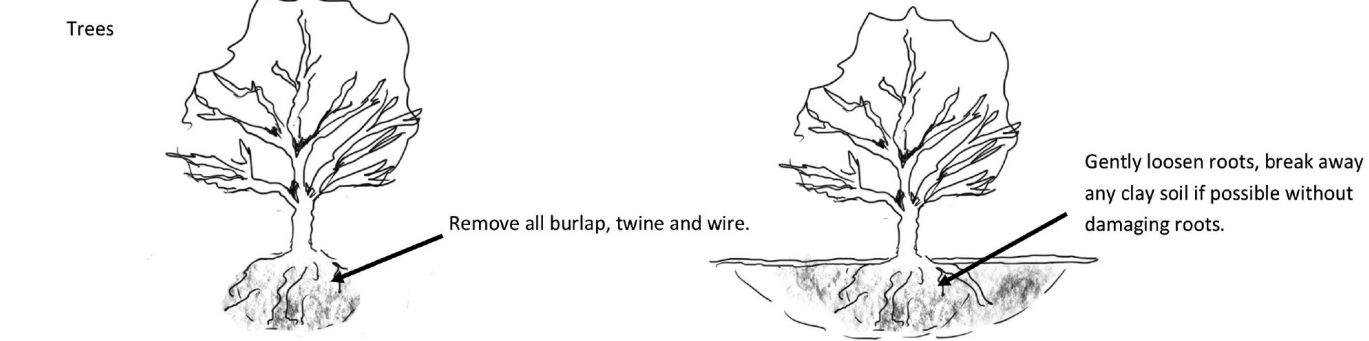
**1 LANDSCAPE PLAN**  
SCALE: 1"=10'-0"

Qty	Size	PLAN ID	Botanical name	Notes
<b>TREES</b> total quantity: 16 / percent native to Puget Sound region: 50%				
3	2" cal.	GINKGO	Ginkgo biloba 'Autumn Gold'	BRANCHED W/ STRONG CENTRAL LEADER
4	8T	ALASKA	Chamaecyparis nootkatensis 'Pendula'	EVERGREEN NATIVE
4	1.5" cal.	CORNUS	Cornus kousa var. chinensis 'Milky Way'	BRANCHED W/ STRONG CENTRAL LEADER
1	2" cal.	AUTUMN GLORY	Acer rubrum 'October Glory'	NATIVE
2	8T	ACER	Acer circinatum	MULTI-STEM NATIVE
2	8T	TSUGA	Tsuga mertensiana	EVERGREEN NATIVE
<b>SHRUBS</b> total quantity: 186 / percent native to Puget Sound region: 58%				
12	5 gal.	MY	Morella californica (syn.) Myrica californica	grows 5-10T EVERGREEN NATIVE
13	5 gal.	RIBES	Ribes sanguineum 'King Edward VII'	grows 7-10T NATIVE
3	2 gal.	PHY	Physocarpus opulifolius 'Diablo' 'Ninebark'	
2	5 gal.	SB	Viburnum tricus 'Spring Bouquet'	
2	5 gal.	HY	Hydrangea paniculata 'Phantom'	
2	5 gal.	BB	Berberis thunbergii f. atropurpurea 'Rose Glow'	
15	5 gal.	AC	Arctostaphylos columbiana	grows 5-10T EVERGREEN NATIVE
24	5 gal.	AB	Abelia x grandiflora 'Kaleidoscope'	EVERGREEN
9	2 gal.	PM	Pinus mugo 'Slow Mound'	EVERGREEN
13	3 gal.	CH	Chioysia x dewittiana 'Aztec Pearl'	grows 8T EVERGREEN
8	2 gal.	SC	Leucothoe fontanesiana 'Zabrid' 'Scarletta'	EVERGREEN
10	4T	ILEX	Ilex crenata 'Sky Pencil'	grows 8T EVERGREEN
5	5 gal.	GREENSCREEN	Camelia sasanqua 'Setsugakka'	grows 6-12T EVERGREEN
18	5 gal.	RP	Rosa pisocarpus	grows 7T NATIVE
18	5 gal.	VO	Vaccinium ovatum	grows 6-9T EVERGREEN NATIVE
6	5 gal.	MA	Mahonia aquifolium	grows 5-8T EVERGREEN NATIVE
24	2 gal.	OS	Gaultheria shallon	EVERGREEN NATIVE
<b>FERNS, GRASSES, PERENNIALS</b> total quantity: 150 / percent native to Puget Sound region: 64%				
53	1 gal.	WESTERN SWORD FERN	Polystichum munifolium	grows 3T EVERGREEN NATIVE
21	1 gal.	MOUDRY	Pennisetum alopecuroides 'Moudry'	4 SEASON
27	1 gal.	HK	Hakonechloa macra 'Aureola'	EVERGREEN
4	1 gal.	FESCUE	Festuca idahoensis	4 SEASON NATIVE
6	1 gal.	Acorus	Acorus 'Ugon' (3 per raised planter)	EVERGREEN
<b>GROUNDCOVERS</b> total quantity: 480 / percent native to Puget Sound region: 50%				
240	4" pot	FRAGARIA	Fragaria chiloensis	24" spacing EVERGREEN NATIVE
240	4" pot	THYME	Thymus praecox 'Coccineus'	12" spacing EVERGREEN

**Planting**

Dig a planting hole two to three times wider than the container to provide loose soil into which emerging roots can expand horizontally, and only as deep as the distance from the top of the root-ball to the bottom of the container to ensure the crown is just above grade. Set the plant in the hole, backfill halfway, and water it in to settle the soil. Finish backfilling. Do not use your foot to firm the soil because it can compact it and slow root growth.

Mulching: Mulches help to hold moisture, nourish the soil, and cut down on all the weeds that blow in. In open areas, add at least 2 inches of mulch, keep shallow around plantings and out of plants' center (crown).



**OPTION 8: STOCKPILE SITE TOPSOILS PRIOR TO GRADING FOR REAPPLICATION**  
Stockpile and cover soil with weed barrier material that sheds moisture yet allows air transmission, in approved location, prior to grading. Replace stockpiled topsoil prior to planting. Amend with compost at PRE-APPROVED rates below:

**A. PLANTING BEDS**  
Place 3 inches of composted material and rototill into 5 inches of replaced soil. Total amended depth to be about 9.5 inches for a settled depth of 8 inches.  
Rake beds to smooth and remove surface rocks larger than 2 inches diameter.  
Mulch planting beds with 4 inches of organic mulch or wood chips.

**B. TURF AREAS**  
Place 1.75 inches of composted material and rototill into 6.5 inches of replaced soil. Total amended depth to be about 9.5 inches for a settled depth of 8 inches.  
Water or roll to compact soil to 85% of maximum dry density.  
Rake to level and remove surface rocks larger than 1 inch diameter.  
Scarification: If placed topsoil plus compost will amount to less than 12 inches, scarify or till subgrade to depth needed to achieve 12 inches of loosed soil after topsoil and amendment as placed. Entire surface should be disturbed by scarification. Do not scarify within drip line of existing trees to be retained.

**CITY OF PUYALLUP VMS SECTION 8.2.A**  
A minimum of eight (8) inches of topsoil, containing ten percent dry weight in planting beds, and 5% organic matter content in turf areas, and a pH from 6.0 to 8.0 or matching the pH of the original undisturbed soil. The topsoil layer shall have a minimum depth of eight inches (8") except where tree roots limit the depth of incorporation of amendments needed to meet the criteria. Subsoils below the topsoil layer should be scarified at least 6 inches with some incorporation of the upper material to avoid stratified layers, where feasible. Installation of the eight inches (8") of topsoil, as described above, shall generally be achieved by placing five inches (5") of imported sandy loam topsoil into planned landscape areas (sub-base scarified four inches (4") with a three-inch (3") layer of compost tilled into the entire depth.

**ESTIMATED VOLUME OF EXISTING TOPSOIL:**  
Existing site area: 20,799 sf  
Existing impervious area (structures, walkways, driveway): 3,800 sf  
Existing topsoil resources: 17,000 cf @ 6" (average depth) = 316 cu yds

**REQUIRED TOPSOIL FOR TURF AREA:**  
1,700 x 0.52 = 32 cu yds

**REQUIRED COMPOST FOR TURF AREA:**  
1,700 x 0.146 = 92 cu yds

**REQUIRED TOPSOIL FOR PLANTING BEDS:**  
8,000 x 0.417 = 123 cu yds

**REQUIRED COMPOST FOR PLANTING BEDS:**  
8,000 x 0.25 = 74 cu yds

**TOTAL REQUIRED TOPSOIL:**  
32 + 123 = 155 cu yds (from stockpile)

**TOTAL REQUIRED COMPOST:**  
92 + 74 = 832 cu yds

**Street Tree Installation Standards Table - City of Puyallup**

Criteria	Class I (Overhead Utility Street Trees)	Class II (Narrow Trees)	Class III (Medium Trees)	Class V (Large Trees)
Minimum planter strip width	4'	4'	5'	6'
On-center spacing standards	20 - 25 ft	20 - 25 ft	25 - 35 ft	30 - 40 ft
Plant under overhead utility lines?	Yes	No	No	No
Planting distance from buildings	7.5'	7.5'	10'	10'
Distance from utility and street light poles	10'	10'	10'	10'
Distance from fire hydrants	5'	5'	5'	5'
Distance from driveway (measured from the outer edge of driveway paving)	7.5'	7.5'	7.5'	7.5'
Distance from stop light signal poles	15'	15'	20'	25'
Distance from underground water, sanitary sewer or storm sewer lines	10'	10'	10'	10'
Distance from underground gas, power or other conduit	3'	3'	3'	5'
Minimum distance from intersection (as measured from the face of curb-line corner at intersection)	30 ft	30 ft	30 ft	30 ft
Minimum distances from street signs (excluding parking signs)	30' from leading side, 10' from trailing side	30' from leading side, 10' from trailing side	30' from leading side, 10' from trailing side	30' from leading side, 10' from trailing side

**7th Avenue Townhomes**  
SEATA ENTERPRISE LLC  
10019 SE 226TH PLACE  
KENT, WASHINGTON 98031  
SEATA.ILL@GMAIL.COM

**Site Location:**  
1200 7th Ave. SE  
Puyallup WA. 98372

**Date:** May 2021 [Revised March 2025]  
Scale: 1"=10'

**Sue Goetz**  
GARDEN DESIGNER  
HORTICULTURIST  
AUTHOR

Sue Goetz, CPH, ECO-Pro  
Garden Design and Consultation  
Tacoma, Washington  
253-225-5187  
info@thecreativegardener.com

WA Certified Professional Horticulturist  
Sue Goetz  
CPH #2112

Locate all utility lines before digging. Plants are chosen for cultural conditions and per client discussions, no substitutions advised unless site and conditions are matched or otherwise approved. Suggested plant reference site www.greatplantpick.com

All property lines and existing elements are assumed accurate measurement as provided by Architect site plans. Legal property line verification is advised by installation contractor for proper placement and landscape accuracy.