

Scope of work under this permit: Monument Sign

The approved construction plans, documents, and all engineering must be posted on the job at all inspections in a visible and readily accessible location.

Full sized legible color plans are required to be provided by the permittee on site for inspection.

Approval of submitted plans is not an approval of omissions or oversights by this office or non compliance with any applicable regulations of local government. The contractor is responsible for making sure that the building complies with all applicable codes and regulations of the local government.

CITY OF PUYALLUP
Planning Division Approved Site Plan
(253) 864-4165
MINIMUM SETBACK REQUIREMENTS
Front Yard: Conditions Rear Yard: N/A
Interior Side Yard: Left: N/A Right: N/A
Street Side Yard: N/A
Zoning District: ML (Limited Manufacturing)
Permit #: PRSG20250392

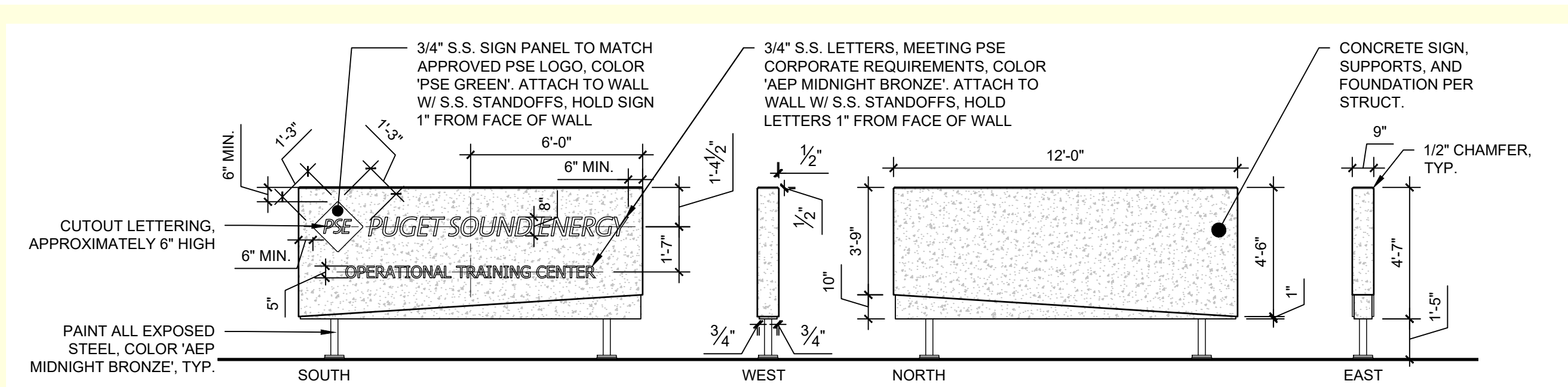
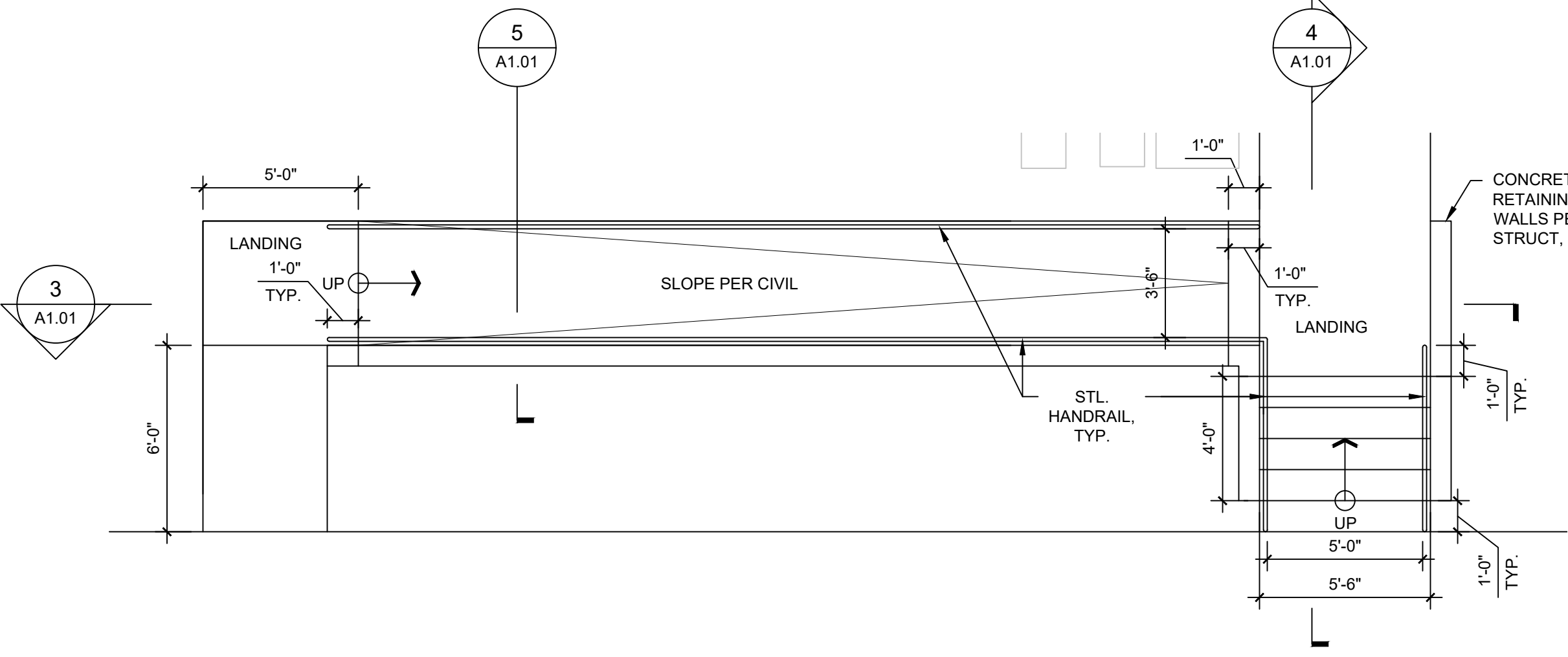
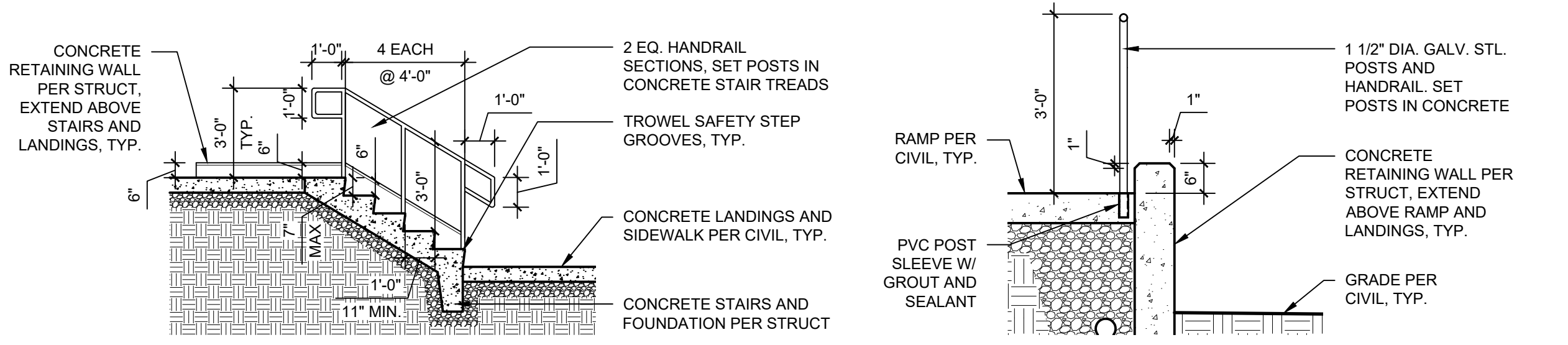
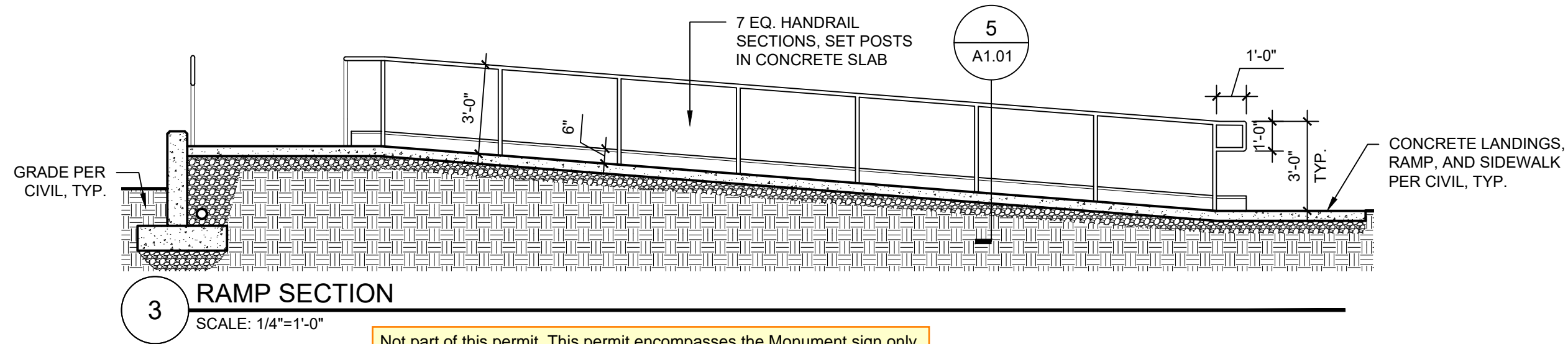
Additional Conditions/Comments

Per PMC 20.60.0655(b). Specific sign requirements by sign type:
(i) Monument signs shall be set back at least five feet from the public right-of-way, regardless of the setback requirement of the zone.
(ii) Placement of monument signs shall not interfere with any vehicular sight-distance requirements, as determined by the city engineer, nor shall it interfere with any pedestrian access.

Staff: J.HulseLew
Date: 04/23/2025

Front, rear, and side yard property lines shall be marked with string from surveying pins prior to footing inspection.

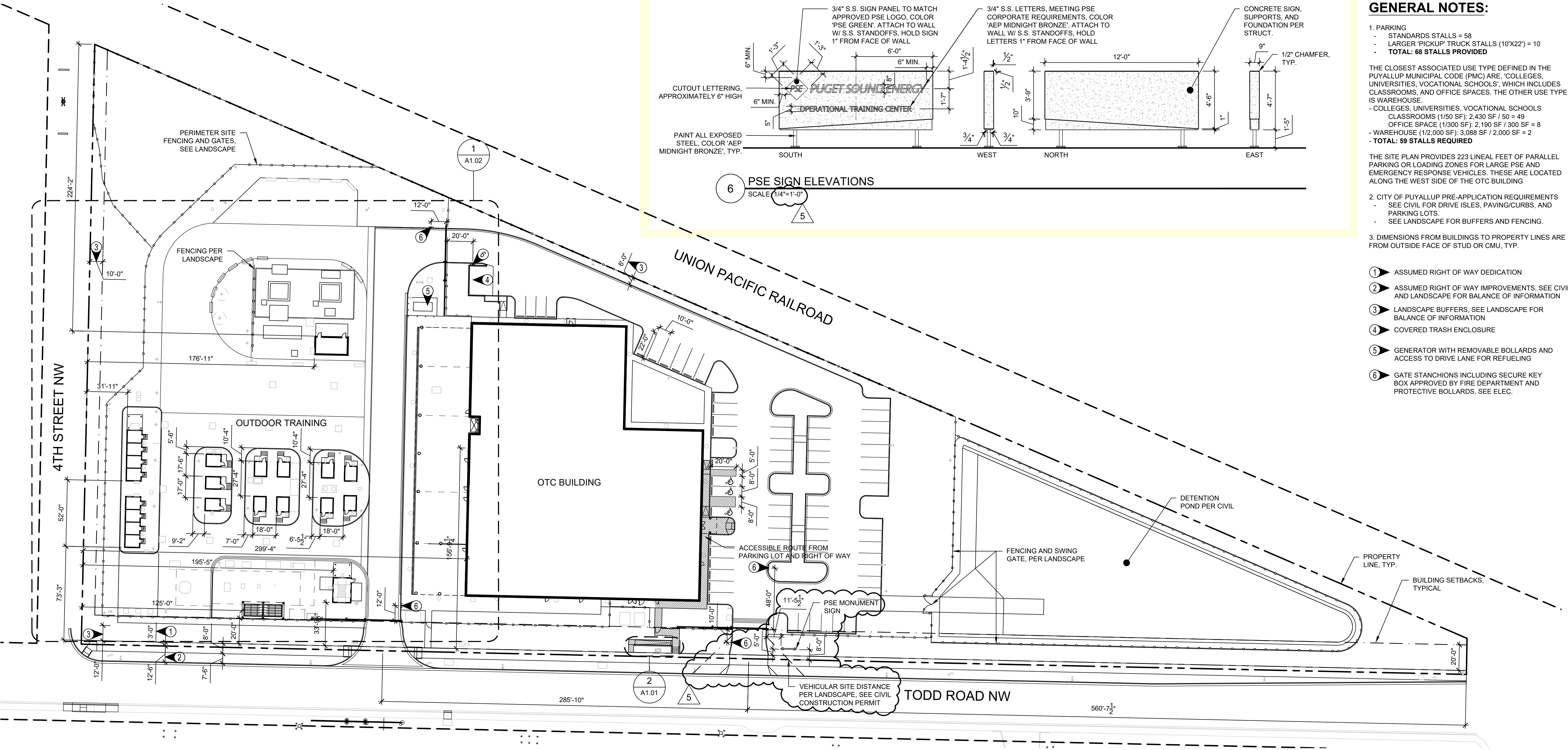
City of Puyallup Development & Permitting Services ISSUED PERMIT	
Building	Planning
Engineering	Public Works
Fire	Traffic



GENERAL NOTES:

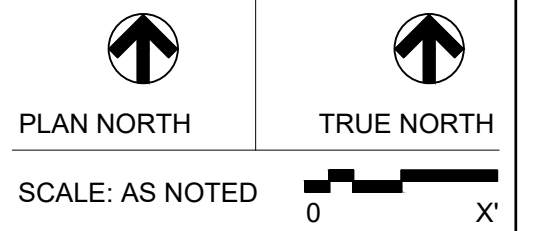
- PARKING
 - STANDARDS STALLS = 58
 - LARGER 'PICKUP' TRUCK STALLS (10'X22') = 10
 - TOTAL: 68 STALLS PROVIDED**
- THE CLOSEST ASSOCIATED USE TYPE DEFINED IN THE PUYALLUP MUNICIPAL CODE (PMC) ARE: COLLEGES, UNIVERSITIES, VOCATIONAL SCHOOLS, WHICH INCLUDES CLASSROOMS, AND OFFICE SPACES. THE OTHER USE TYPE IS WAREHOUSE.
 - COLLEGES, UNIVERSITIES, VOCATIONAL SCHOOLS
 - CLASSROOMS (1/50 SF): 2,430 SF / 50 = 49
 - OFFICE SPACE (1/300 SF): 2,190 SF / 300 SF = 8
 - WAREHOUSE (1/2,000 SF): 3,088 SF / 2,000 SF = 2
 - TOTAL: 59 STALLS REQUIRED**
- THE SITE PLAN PROVIDES 223 LINEAL FEET OF PARALLEL PARKING OR LOADING ZONES FOR LARGE PSE AND EMERGENCY RESPONSE VEHICLES. THESE ARE LOCATED ALONG THE WEST SIDE OF THE OTC BUILDING
- CITY OF PUYALLUP PRE-APPLICATION REQUIREMENTS
 - SEE CIVIL FOR DRIVE ISLES, PAVING/CURBS, AND PARKING LOTS.
 - SEE LANDSCAPE FOR BUFFERS AND FENCING.
- DIMENSIONS FROM BUILDINGS TO PROPERTY LINES ARE FROM OUTSIDE FACE OF STUD OR CMU, TYP.

- ASSUMED RIGHT OF WAY DEDICATION
- ASSUMED RIGHT OF WAY IMPROVEMENTS. SEE CIVIL AND LANDSCAPE FOR BALANCE OF INFORMATION
- LANDSCAPE BUFFERS. SEE LANDSCAPE FOR BALANCE OF INFORMATION
- COVERED TRASH ENCLOSURE
- GENERATOR WITH REMOVABLE BOLLARDS AND ACCESS TO DRIVE LANE FOR REFUELING
- GATE STANCHIONS INCLUDING SECURE KEY BOX APPROVED BY FIRE DEPARTMENT AND PROTECTIVE BOLLARDS, SEE ELEC.



100% CD SET

REV	ISSUED FOR	DATE
1	BUILDING PERMIT REVISION	05/11/2024
2	100% CD REVISIONS	08/06/2024
3	COMPRESSOR BUILDING REVISIONS	01/02/2025
4	PSE SIGNAGE	03/13/2025
5	PSE SIGNAGE - PERMIT REVISION 1	04/18/2025



PSE - OPERATIONAL TRAINING CENTER

OVERALL SITE PLAN

PROJECT No: 202202.06
DRAWN BY: MR
CHECKED BY: AK
DATE ISSUED: 12/06/24