

**Tri-State Engineering, Inc.**

terry@tse-aep.com  
(206) 369-8394

Re: J1177148A  
Vitaly Kravchishin

The truss drawing(s) referenced below have been prepared by Tri-State Engineering under my direct supervision based on the parameters provided by The Truss Company and Building Supply, LLC

Pages or sheets covered by this seal: Page 1 through Page 23

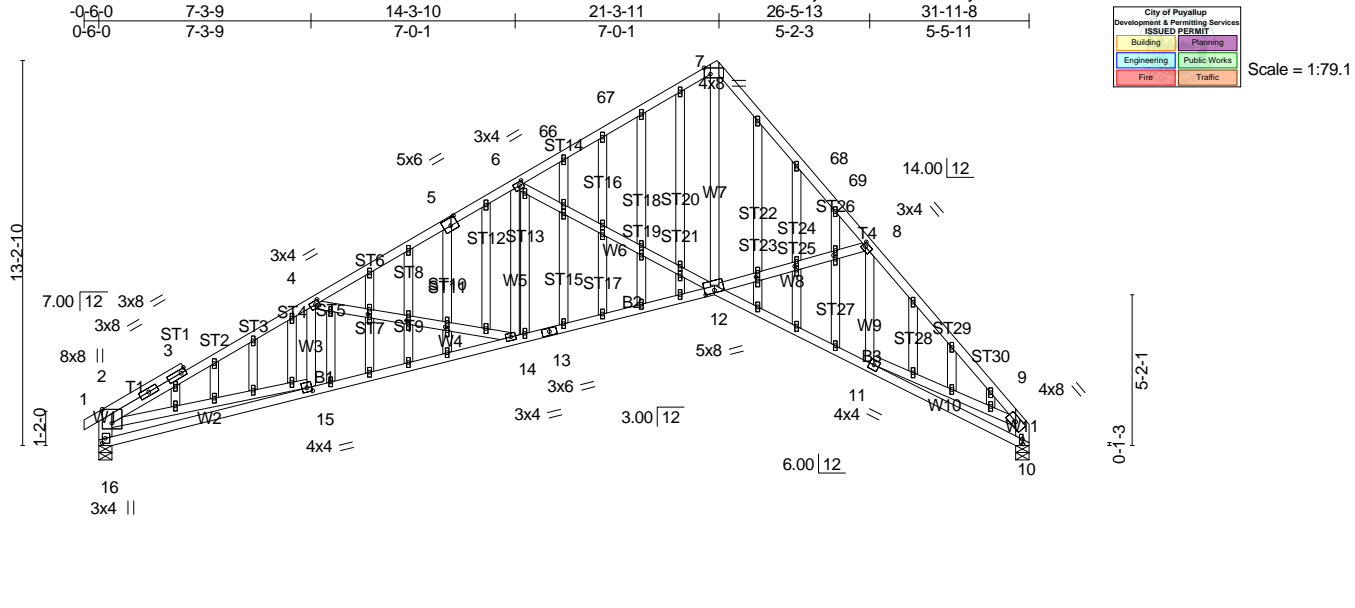
My license renewal date for the state of Washington is August 20th 2026



2/03/25

Digitally signed by: Terry L. Powell, P.E.

The seal on these drawings indicate acceptance of professional engineering responsibility solely for the truss components shown. The suitability and use of this component for any particular building is the responsibility of the building designer, per ANSI/TPI 1.



|                       |   |
|-----------------------|---|
| Plate Offsets (X,Y)-- | [2:0-5-12,Edge], [4:0-1-12,0-1-8], [5:0-3-0,0-3-0], [6:0-1-12,0-1-8], [7:Edge,0-2-9], [8:0-1-4,0-1-8], [10:0-2-0,0-0-4], [12:0-4-0,0-1-0], [15:0-2-0,0-1-12], [16:0-2-0,0-1-4], [33:0-1-9,0-0-12], [35:0-1-9,0-0-12], [38:0-1-9,0-0-12], [53:0-1-10,0-0-12], [56:0-1-10,0-0-12], [59:0-1-10,0-0-12] |
|-----------------------|---|

|   |  |   |   |                            |                         |
|---|--|---|---|----------------------------|-------------------------|
| <b>LOADING</b> (psf)  | <b>SPACING-</b>  | <b>CSI.</b>                                 | <b>DEFL.</b>  | <b>PLATES</b>              | <b>GRIP</b>             |
| TCLL 25.0<br>(Roof Snow=25.0)<br>TCDL 8.0<br>BCLL 0.0 *<br>BCDL 7.0 | 2-0-0<br>Plate Grip DOL 1.15<br>Lumber DOL 1.15<br>Rep Stress Incr YES<br>Code IBC2021/TPI2014 | TC 0.85<br>BC 0.53<br>WB 0.84<br>Matrix-MSH | in (loc) l/defl L/d<br>Vert(LL) -0.17 14-15 >999 360<br>Vert(CT) -0.29 12-14 >999 240<br>Horz(CT) 0.24 10 n/a n/a | MT20<br><br>Weight: 273 lb | 185/148<br><br>FT = 20% |

**LUMBER-**  
 TOP CHORD 2x4 HF-N No.1/No.2  
 BOT CHORD 2x4 HF-N No.1/No.2  
 WEBS 2x4 DF Stud \*Except\*  
 W6,W7: 2x4 HF-N No.1/No.2, W1,W11: 2x6 DF SS  
 OTHERS 2x4 DF Stud

**BRACING-**  
 TOP CHORD Structural wood sheathing directly applied or 2-2-0 oc purlins, except end verticals.  
 BOT CHORD Rigid ceiling directly applied or 10-0-0 oc bracing.

MiTek recommends that Stabilizers and required cross bracing be installed during truss erection, in accordance with Stabilizer Installation guide.

**REACTIONS.** (lb/size) 10=1259/0-5-8 (min. 0-2-1), 16=1309/0-5-8 (min. 0-2-3)  
 Max Horz 16=228(LC 9)  
 Max Uplift 10=-60(LC 12), 16=-90(LC 12)  
 Max Grav 10=1259(LC 1), 16=1335(LC 19)

**FORCES.** (lb) - Max. Comp./Max. Ten. - All forces 250 (lb) or less except when shown.  
 TOP CHORD 2-16=-1477/182, 2-3=-2885/214, 3-4=-2773/245, 4-5=-2385/182, 5-6=-2175/200,  
 6-66=-1532/100, 66-67=-1371/114, 7-67=-1359/130, 7-68=-1782/176, 68-69=-1818/153,  
 8-69=-1926/141, 8-9=-2170/126  
 BOT CHORD 15-16=-282/942, 14-15=-294/2480, 13-14=-147/2021, 12-13=-139/2042, 11-12=-44/1534  
 WEBS 4-14=-466/145, 6-14=-2/380, 6-12=-905/196, 7-12=-115/1662, 8-12=-283/209,  
 9-10=-1227/77, 2-15=-12/1564, 9-11=-33/1450

- NOTES-** (12)
- 1) Wind: ASCE 7-16; Vult=110mph (3-second gust) Vasd=87mph; TCDL=4.8psf; BCDL=4.2psf; h=25ft; Cat. II; Exp B; Enclosed; MWFRS (envelope) gable end zone and C-C Exterior(2E) -0-6-0 to 2-8-6, Interior(1) 2-8-6 to 17-11-2, Exterior(2R) 17-11-2 to 24-3-14, Interior(1) 24-3-14 to 28-6-6, Exterior(2E) 28-6-6 to 31-8-12 zone; cantilever left and right exposed; end vertical left and right exposed; C-C for members and forces & MWFRS for reactions shown; Lumber DOL=1.60 plate grip DOL=1.60
  - 2) Truss designed for wind loads in the plane of the truss only. For studs exposed to wind (normal to the face), see Standard Industry Gable End Details as applicable, or consult qualified building designer as per ANSI/TPI 1.
  - 3) TCLL: ASCE 7-16; Pf=25.0 psf (Lum DOL = 1.15 Plate DOL = 1.15); Is=1.0; Rough Cat B; Partially Exp.; Ce=1.0; Cs=1.00; Ct=1.10
  - 4) Unbalanced snow loads have been considered for this design.
  - 5) This truss has been designed for greater of min roof live load of 17.0 psf or 1.00 times flat roof load of 25.0 psf on overhangs non-concurrent with other live loads.
  - 6) All plates are 1.5x4 MT20 unless otherwise indicated.
  - 7) Gable studs spaced at 1-4-0 oc.
  - 8) This truss has been designed for a 10.0 psf bottom chord live load nonconcurrent with any other live loads.
  - 9) \* This truss has been designed for a live load of 23.0psf on the bottom chord in all areas where a rectangle 3-6-0 tall by 2-0-0 wide will fit between the bottom chord and any other members.
  - 10) Bearing at joint(s) 10, 16 considers parallel to grain value using ANSI/TPI 1 angle to grain formula. Building designer should verify capacity of bearing surface.
  - 11) Provide mechanical connection (by others) of truss to bearing plate capable of withstanding 60 lb uplift at joint 10 and 90 lb uplift at joint 16.

Continued on page 2 2/03/25



|           |       |                      |     |     |                          |
|-----------|-------|----------------------|-----|-----|--------------------------|
| Job       | Truss | Truss Type           | Qty | Ply | Vitaly Kravchishin       |
| J1177148A | A1    | ROOF SPECIAL STRUCTU | 2   | 1   | Job Reference (optional) |

The Truss Company and Building Supply LLC, Sumner, WA

Run: 8.810 s Sep 13 2024 Print: 8.830 s Jan 17 2025 MiTek Industries, Inc. Mon Feb 3 16:36:10 2025 Page 2  
 ID:dLKfzmfhDbtOHQx1xmjsBkznYsv-IVC6707ydmf?KXQ?PZWzKQhrarvewmP1nF16iwzomG3

12) All dimensions given in feet-inches-sixteenths (FFIISS) format.

**LOAD CASE(S)** Standard



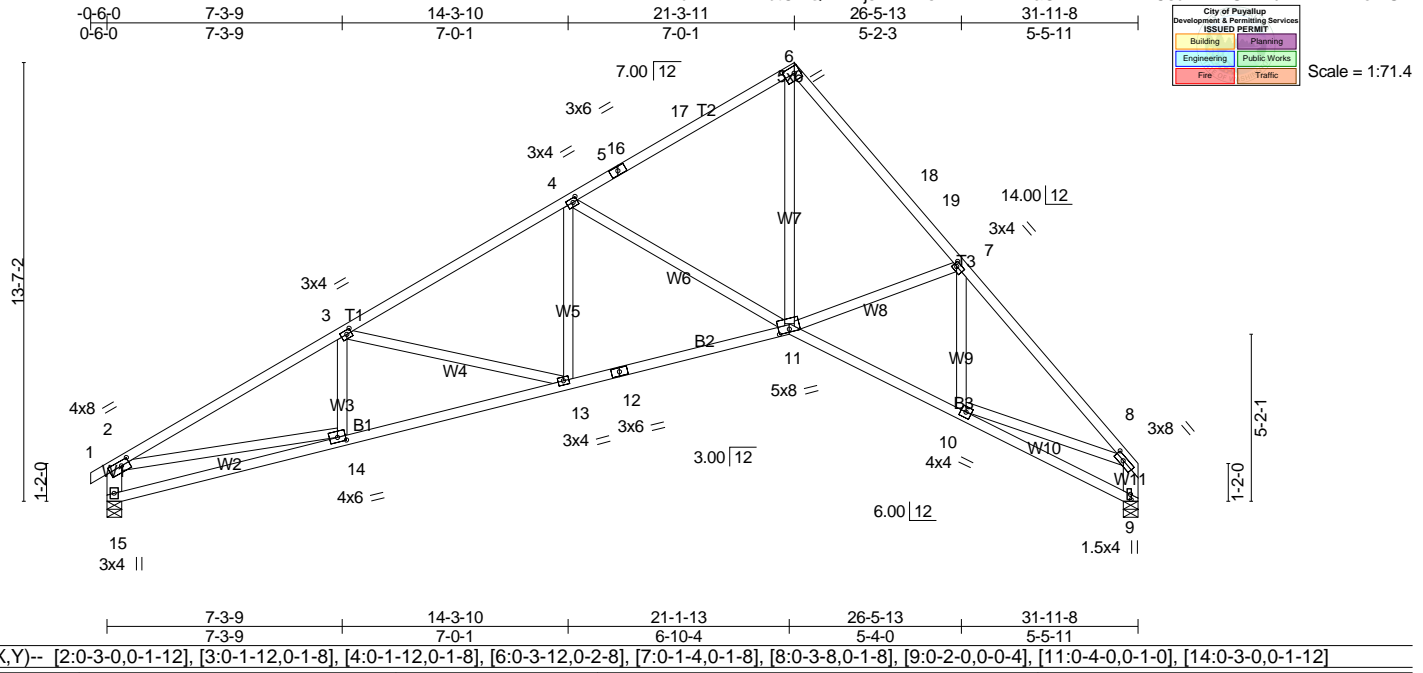
2/03/25

**WARNING - Verify design parameters and READ NOTES ON THIS AND INCLUDED MITEK REFERENCE PAGE MI-7473 BEFORE USE.**  
 Design valid for use only with MiTek connectors. This design is based only upon parameters shown, and is for an individual building component.  
 Applicability of design parameters and proper incorporation of component is responsibility of building designer - not truss designer. Bracing shown is for lateral support of individual web members only. Additional temporary bracing to insure stability during construction is the responsibility of the erector. Additional permanent bracing of the overall structure is the responsibility of the building designer. For general guidance regarding fabrication, quality control, storage, delivery, erection and bracing, consult ANSI/TPI1 Quality Criteria, DSB-89 and BCS11 Building Component Safety Information available from Truss Plate Institute, 2670 Crain Highway, Suite 203 Waldorf, MD 20601



The Truss Company and Building Supply LLC, Sumner, WA

Job Reference (optional)



| LOADING (psf)                 | SPACING-             | CSI.       | DEFL.                         | PLATES         | GRIP     |
|-------------------------------|----------------------|------------|-------------------------------|----------------|----------|
| TCLL 25.0<br>(Roof Snow=25.0) | 2-0-0                | TC 0.91    | in (loc) l/defl L/d           | MT20           | 185/148  |
| TCDL 8.0                      | Plate Grip DOL 1.15  | BC 0.49    | Vert(LL) -0.15 13-14 >999 360 |                |          |
| BCLL 0.0 *                    | Lumber DOL 1.15      | WB 0.82    | Vert(CT) -0.26 11-13 >999 240 |                |          |
| BCDL 7.0                      | Rep Stress Incr YES  | Matrix-MSH | Horz(CT) 0.21 9 n/a n/a       |                |          |
|                               | Code IBC2021/TPI2014 |            |                               | Weight: 170 lb | FT = 20% |

**LUMBER-**  
 TOP CHORD 2x4 HF-N No.1/No.2  
 BOT CHORD 2x4 HF-N No.1/No.2  
 WEBS 2x4 DF Stud \*Except\*  
 W6,W7: 2x4 HF-N No.1/No.2, W1,W11: 2x6 DF SS

**BRACING-**  
 TOP CHORD Structural wood sheathing directly applied, except end verticals.  
 BOT CHORD Rigid ceiling directly applied or 10-0-0 oc bracing.

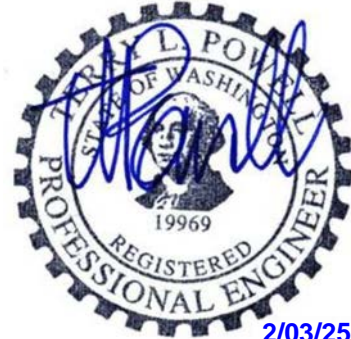
MiTek recommends that Stabilizers and required cross bracing be installed during truss erection, in accordance with Stabilizer Installation guide.

**REACTIONS.** (lb/size) 9=1259/0-5-8 (min. 0-2-1), 15=1309/0-5-8 (min. 0-2-3)  
 Max Horz 15=236(LC 9)  
 Max Uplift 9=63(LC 12), 15=88(LC 12)  
 Max Grav 9=1259(LC 1), 15=1336(LC 19)

**FORCES.** (lb) - Max. Comp./Max. Ten. - All forces 250 (lb) or less except when shown.  
 TOP CHORD 2-3=-2628/229, 3-4=-2255/199, 4-5=-1478/106, 5-16=-1416/112, 16-17=-1310/121,  
 6-17=-1303/137, 6-18=-1678/186, 18-19=-1719/162, 7-19=-1819/151, 7-8=-1972/127,  
 2-15=-1371/170  
 BOT CHORD 14-15=-250/507, 13-14=-284/2237, 12-13=-150/1906, 11-12=-142/1927, 10-11=-45/1387  
 WEBS 3-13=-354/134, 4-13=-3/356, 4-11=-851/194, 6-11=-126/1571, 2-14=-51/1817,  
 8-9=-1228/81, 8-10=-33/1280

**NOTES-** (9)  
 1) Wind: ASCE 7-16; Vult=110mph (3-second gust) Vasd=87mph; TCDL=4.8psf; BCDL=4.2psf; h=25ft; Cat. II; Exp B; Enclosed; MWFRS (envelope) gable end zone and C-C Exterior(2E) 0-6-0 to 2-8-6, Interior(1) 2-8-6 to 18-1-5, Exterior(2R) 18-1-5 to 24-6-0, Interior(1) 24-6-0 to 28-6-6, Exterior(2E) 28-6-6 to 31-8-12 zone; cantilever left and right exposed; end vertical left and right exposed; C-C for members and forces & MWFRS for reactions shown; Lumber DOL=1.60 plate grip DOL=1.60  
 2) TCLL: ASCE 7-16; Pf=25.0 psf (Lum DOL = 1.15 Plate DOL = 1.15); Is=1.0; Rough Cat B; Partially Exp.; Ce=1.0; Cs=1.00; Ct=1.10  
 3) Unbalanced snow loads have been considered for this design.  
 4) This truss has been designed for greater of min roof live load of 17.0 psf or 1.00 times flat roof load of 25.0 psf on overhangs non-concurrent with other live loads.  
 5) This truss has been designed for a 10.0 psf bottom chord live load nonconcurrent with any other live loads.  
 6) \* This truss has been designed for a live load of 23.0psf on the bottom chord in all areas where a rectangle 3-6-0 tall by 2-0-0 wide will fit between the bottom chord and any other members.  
 7) Bearing at joint(s) 9, 15 considers parallel to grain value using ANSI/TPI 1 angle to grain formula. Building designer should verify capacity of bearing surface.  
 8) Provide mechanical connection (by others) of truss to bearing plate capable of withstanding 63 lb uplift at joint 9 and 88 lb uplift at joint 15.  
 9) All dimensions given in feet-inches-sixteenths (FFIISS) format.

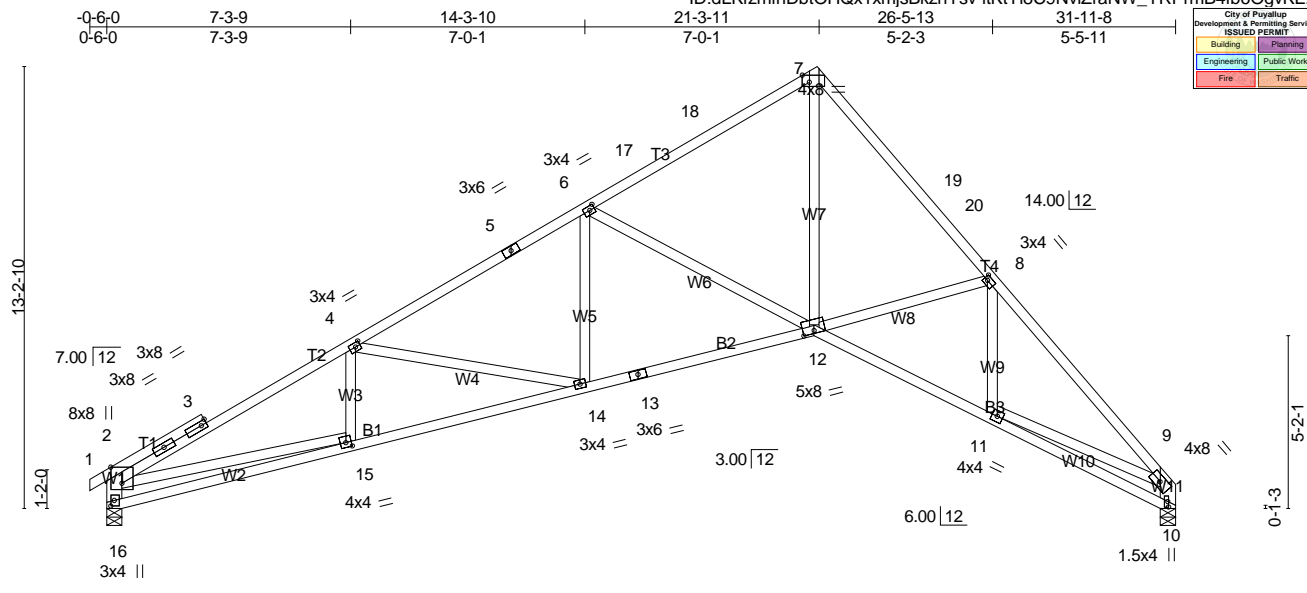
**LOAD CASE(S)** Standard



2/03/25

**WARNING - Verify design parameters and READ NOTES ON THIS AND INCLUDED MITEK REFERENCE PAGE MII-7473 BEFORE USE.**  
 Design valid for use only with MiTek connectors. This design is based only upon parameters shown, and is for an individual building component. Applicability of design parameters and proper incorporation of component is responsibility of building designer - not truss designer. Bracing shown is for lateral support of individual web members only. Additional temporary bracing to insure stability during construction is the responsibility of the erector. Additional permanent bracing of the overall structure is the responsibility of the building designer. For general guidance regarding fabrication, quality control, storage, delivery, erection and bracing, consult ANSI/TPI1 Quality Criteria, DSB-89 and BCS11 Building Component Safety Information available from Truss Plate Institute, 2670 Crain Highway, Suite 203 Waldorf, MD 20601





City of Puyallup  
 Development & Permitting Services  
 ISSUED PERMIT

|             |              |
|-------------|--------------|
| Building    | Planning     |
| Engineering | Public Works |
| Fire        | Traffic      |

Scale = 1:68.9

Plate Offsets (X,Y)-- [2:0-5-12,Edge], [4:0-1-12,0-1-8], [6:0-1-12,0-1-8], [7:Edge,0-2-9], [8:0-1-4,0-1-8], [10:0-2-0,0-0-4], [12:0-4-0,0-1-0], [15:0-2-0,0-1-12], [16:0-2-0,0-1-4]

| LOADING (psf)                 | SPACING-  | CSI.                          | DEFL.   | PLATES         | GRIP     |
|-------------------------------|---|-------------------------------|---|----------------|----------|
| TCLL 25.0<br>(Roof Snow=25.0) | 2-0-0<br>Plate Grip DOL 1.15<br>Lumber DOL 1.15 | TC 0.85<br>BC 0.53<br>WB 0.84 | in (loc) l/defl L/d<br>Vert(LL) -0.17 14-15 >999 360<br>Vert(CT) -0.29 12-14 >999 240<br>Horz(CT) 0.24 10 n/a n/a | MT20           | 185/148  |
| TCDL 8.0                      | Rep Stress Incr YES                             | Matrix-MSH                    |   |                |          |
| BCLL 0.0 *                    | Code IBC2021/TPI2014                            |                               |   |                |          |
| BCDL 7.0                      |   |                               |   | Weight: 170 lb | FT = 20% |

**LUMBER-**  
 TOP CHORD 2x4 HF-N No.1/No.2  
 BOT CHORD 2x4 HF-N No.1/No.2  
 WEBS 2x4 DF Stud \*Except\*  
 W6,W7: 2x4 HF-N No.1/No.2, W1,W11: 2x6 DF SS

**BRACING-**  
 TOP CHORD Structural wood sheathing directly applied or 2-2-0 oc purlins, except end verticals.  
 BOT CHORD Rigid ceiling directly applied or 10-0-0 oc bracing.

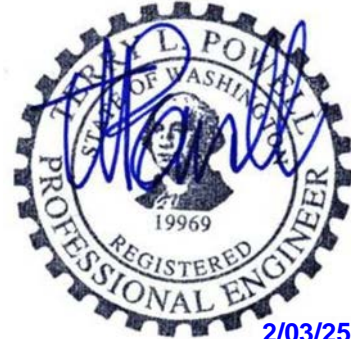
MiTek recommends that Stabilizers and required cross bracing be installed during truss erection, in accordance with Stabilizer Installation guide.

**REACTIONS.** (lb/size) 10=1259/0-5-8 (min. 0-2-1), 16=1309/0-5-8 (min. 0-2-3)  
 Max Horz 16=228(LC 9)  
 Max Uplift 10=-60(LC 12), 16=-90(LC 12)  
 Max Grav 10=1259(LC 1), 16=1335(LC 19)

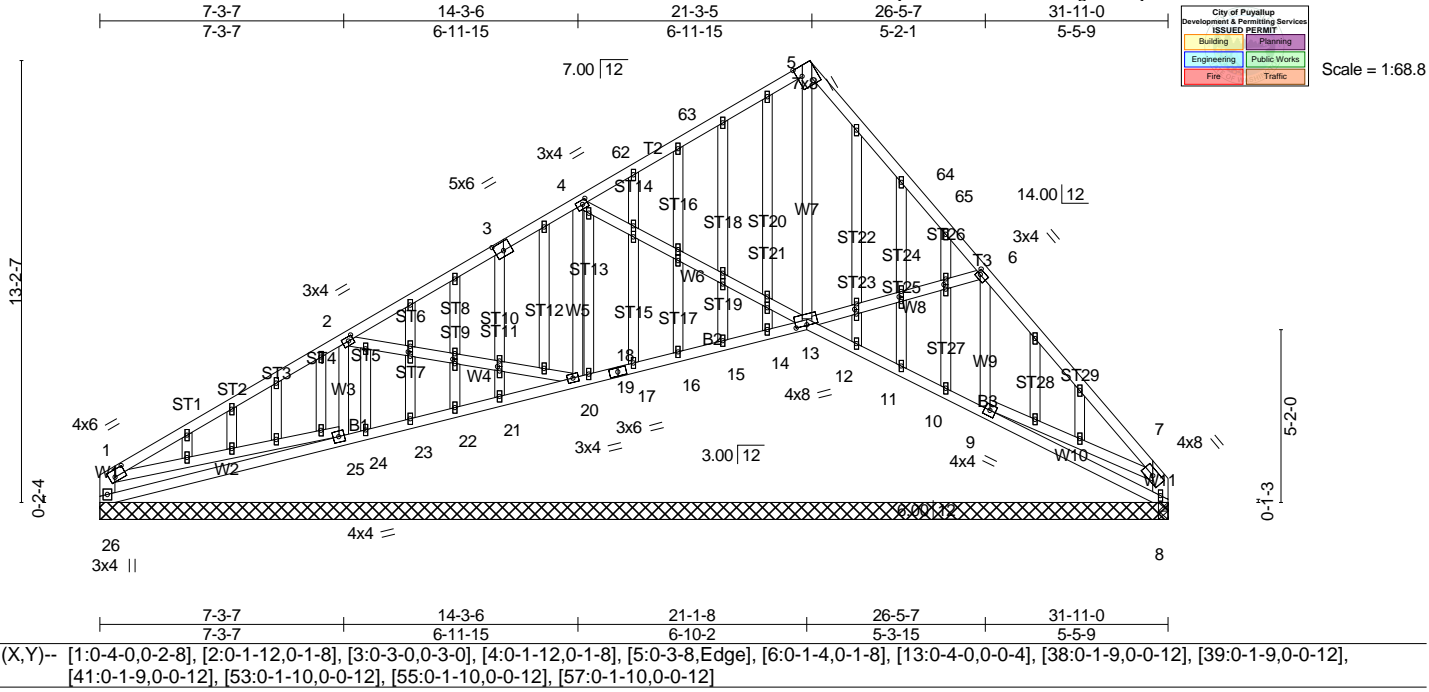
**FORCES.** (lb) - Max. Comp./Max. Ten. - All forces 250 (lb) or less except when shown.  
 TOP CHORD 2-16=-1477/182, 2-3=-2885/214, 3-4=-2773/245, 4-5=-2385/182, 5-6=-2175/200,  
 6-17=-1532/100, 17-18=-1371/114, 7-18=-1359/130, 7-19=-1782/176, 19-20=-1818/153,  
 8-20=-1926/141, 8-9=-2170/126  
 BOT CHORD 15-16=-282/942, 14-15=-294/2480, 13-14=-147/2021, 12-13=-139/2042, 11-12=-44/1534  
 WEBS 4-14=-466/145, 6-14=-2/380, 6-12=-905/196, 7-12=-115/1662, 8-12=-283/209,  
 9-10=-1227/77, 2-15=-12/1564, 9-11=-33/1450

- NOTES-** (9)
- 1) Wind: ASCE 7-16; Vult=110mph (3-second gust) Vasd=87mph; TCDL=4.8psf; BCDL=4.2psf; h=25ft; Cat. II; Exp B; Enclosed; MWFRS (envelope) gable end zone and C-C Exterior(2E) -0-6-0 to 2-8-6, Interior(1) 2-8-6 to 17-11-2, Exterior(2R) 17-11-2 to 24-3-14, Interior(1) 24-3-14 to 28-6-6, Exterior(2E) 28-6-6 to 31-8-12 zone; cantilever left and right exposed; end vertical left and right exposed; C-C for members and forces & MWFRS for reactions shown; Lumber DOL=1.60 plate grip DOL=1.60
  - 2) TCLL: ASCE 7-16; Pf=25.0 psf (Lum DOL = 1.15 Plate DOL = 1.15); Is=1.0; Rough Cat B; Partially Exp.; Ce=1.0; Cs=1.00; Ct=1.10
  - 3) Unbalanced snow loads have been considered for this design.
  - 4) This truss has been designed for greater of min roof live load of 17.0 psf or 1.00 times flat roof load of 25.0 psf on overhangs non-concurrent with other live loads.
  - 5) This truss has been designed for a 10.0 psf bottom chord live load nonconcurrent with any other live loads.
  - 6) \* This truss has been designed for a live load of 23.0psf on the bottom chord in all areas where a rectangle 3-6-0 tall by 2-0-0 wide will fit between the bottom chord and any other members.
  - 7) Bearing at joint(s) 10, 16 considers parallel to grain value using ANSI/TPI 1 angle to grain formula. Building designer should verify capacity of bearing surface.
  - 8) Provide mechanical connection (by others) of truss to bearing plate capable of withstanding 60 lb uplift at joint 10 and 90 lb uplift at joint 16.
  - 9) All dimensions given in feet-inches-sixteenths (FFI/SS) format.

**LOAD CASE(S)** Standard



2/03/25



|                                    |  |  |  |                |             |
|------------------------------------|--|--|--|----------------|-------------|
| Plate Offsets (X,Y)--              | [1:0-4-0,0-2-8], [2:0-1-12,0-1-8], [3:0-3-0,0-3-0], [4:0-1-12,0-1-8], [5:0-3-8,Edge], [6:0-1-4,0-1-8], [13:0-4-0,0-0-4], [38:0-1-9,0-0-12], [39:0-1-9,0-0-12], [41:0-1-9,0-0-12], [53:0-1-10,0-0-12], [55:0-1-10,0-0-12], [57:0-1-10,0-0-12] |  |  |                |             |
| <b>LOADING</b> (psf)               | <b>SPACING-</b>  | <b>CSI.</b>                                | <b>DEFL.</b>   | <b>PLATES</b>  | <b>GRIP</b> |
| TCLL 25.0<br>(Roof Snow=25.0)      | 2-0-0<br>Plate Grip DOL 1.15<br>Lumber DOL 1.15  | TC 0.70<br>BC 0.27<br>WB 0.33<br>Matrix-SH | in (loc) l/defl L/d<br>Vert(LL) -0.05 25-26 >999 360<br>Vert(CT) -0.08 25-26 >999 240<br>Horz(CT) 0.01 8 n/a n/a | MT20           | 185/148     |
| TCDL 8.0<br>BCLL 0.0 *<br>BCDL 7.0 | Rep Stress Incr YES<br>Code IBC2021/TPI2014  |  |  | Weight: 266 lb | FT = 20%    |

**LUMBER-**  
 TOP CHORD 2x4 HF-N No.1/No.2  
 BOT CHORD 2x4 HF-N No.1/No.2  
 WEBS 2x4 DF Stud \*Except\*  
 W6,W7: 2x4 HF-N No.1/No.2, W1,W11: 2x6 DF SS  
 OTHERS 2x4 DF Stud

**BRACING-**  
 TOP CHORD Structural wood sheathing directly applied or 6-0-0 oc purlins, except end verticals.  
 BOT CHORD Rigid ceiling directly applied or 10-0-0 oc bracing, Except: 6-0-0 oc bracing: 24-25,9-10.

MiTek recommends that Stabilizers and required cross bracing be installed during truss erection, in accordance with Stabilizer Installation guide.

**REACTIONS.** All bearings 31-11-0.  
 (lb) - Max Horz 26=225(LC 9)  
 Max Uplift All uplift 100 lb or less at joint(s) 8, 25, 20, 13, 9, 26, 19, 10 except 24=-269(LC 5)  
 Max Grav All reactions 250 lb or less at joint(s) 8, 8, 14, 15, 16, 17, 21, 22, 23, 12, 11 except 25=647(LC 1), 20=551(LC 18), 13=462(LC 18), 9=500(LC 19), 26=284(LC 18)

**FORCES.** (lb) - Max. Comp./Max. Ten. - All forces 250 (lb) or less except when shown.  
 TOP CHORD 1-26=-303/59, 6-65=-252/30  
 BOT CHORD 25-26=-225/398  
 WEBS 2-25=-458/122, 4-20=-512/80, 5-13=-363/13, 6-9=-421/81

- NOTES-** (10)
- 1) Wind: ASCE 7-16; Vult=110mph (3-second gust) Vasd=87mph; TCDL=4.8psf; BCDL=4.2psf; h=25ft; Cat. II; Exp B; Enclosed; MWFRS (envelope) gable end zone and C-C Exterior(2E) 0-2-12 to 3-5-1, Interior(1) 3-5-1 to 17-10-14, Exterior(2R) 17-10-14 to 24-3-7, Interior(1) 24-3-7 to 28-5-15, Exterior(2E) 28-5-15 to 31-8-4 zone; cantilever left and right exposed; end vertical left and right exposed; C-C for members and forces & MWFRS for reactions shown; Lumber DOL=1.60 plate grip DOL=1.60
  - 2) Truss designed for wind loads in the plane of the truss only. For studs exposed to wind (normal to the face), see Standard Industry Gable End Details as applicable, or consult qualified building designer as per ANSI/TPI 1.
  - 3) TCLL: ASCE 7-16; Pf=25.0 psf (Lum DOL = 1.15 Plate DOL = 1.15); Is=1.0; Rough Cat B; Partially Exp.; Ce=1.0; Cs=1.00; Ct=1.10
  - 4) Unbalanced snow loads have been considered for this design.
  - 5) All plates are 1.5x4 MT20 unless otherwise indicated.
  - 6) Gable studs spaced at 1-4-0 oc.
  - 7) This truss has been designed for a 10.0 psf bottom chord live load nonconcurrent with any other live loads.
  - 8) \* This truss has been designed for a live load of 23.0psf on the bottom chord in all areas where a rectangle 3-6-0 tall by 2-0-0 wide will fit between the bottom chord and any other members.
  - 9) Provide mechanical connection (by others) of truss to bearing plate capable of withstanding 100 lb uplift at joint(s) 8, 25, 20, 13, 9, 26, 19, 10 except (jt=lb) 24=269.
  - 10) All dimensions given in feet-inches-sixteenths (FFIISS) format.

**LOAD CASE(S)** Standard

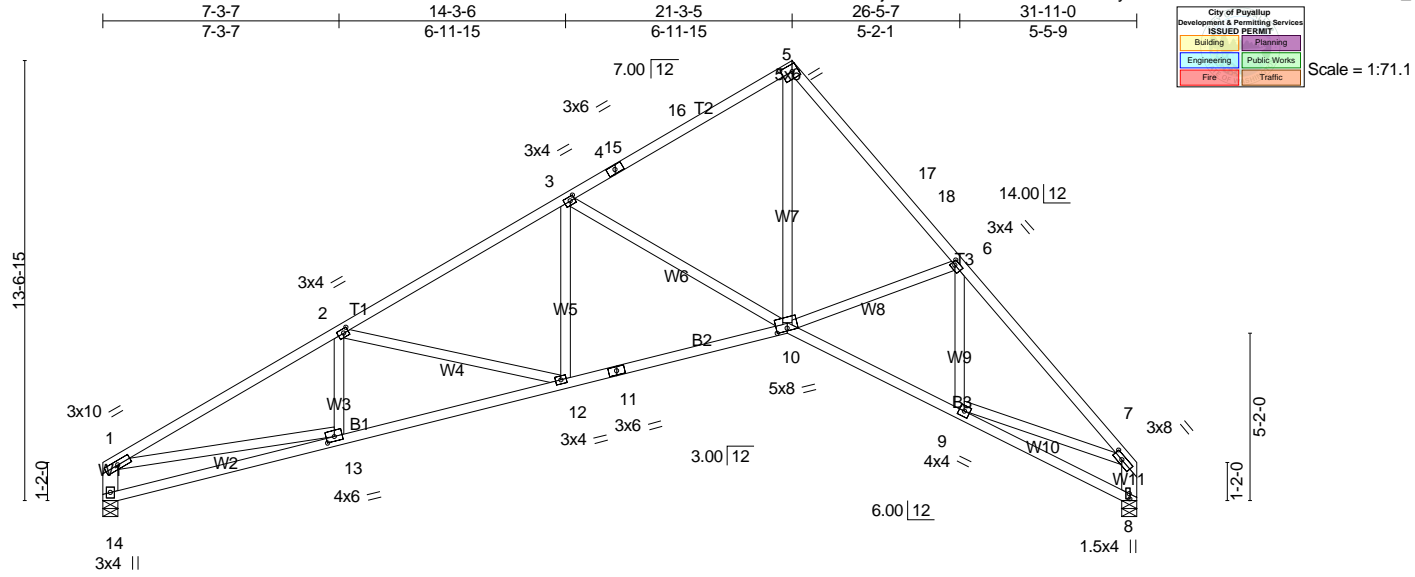


2/03/25

**WARNING - Verify design parameters and READ NOTES ON THIS AND INCLUDED MITEK REFERENCE PAGE MII-7473 BEFORE USE.**

Design valid for use only with MiTek connectors. This design is based only upon parameters shown, and is for an individual building component. Applicability of design parameters and proper incorporation of component is responsibility of building designer - not truss designer. Bracing shown is for lateral support of individual web members only. Additional temporary bracing to insure stability during construction is the responsibility of the erector. Additional permanent bracing of the overall structure is the responsibility of the building designer. For general guidance regarding fabrication, quality control, storage, delivery, erection and bracing, consult ANSI/TPI1 Quality Criteria, DSB-89 and BCS11 Building Component Safety Information available from Truss Plate Institute, 2670 Crain Highway, Suite 203 Waldorf, MD 20601





|                       |  |
|-----------------------|--|
| Plate Offsets (X,Y)-- | [2:0-1-12,0-1-8], [3:0-1-12,0-1-8], [5:0-3-12,0-2-8], [6:0-1-4,0-1-8], [7:0-3-8,0-1-8], [8:0-2-0,0-0-4], [10:0-4-0,0-1-0], [13:0-3-0,0-1-12] |
|-----------------------|--|

|                               |   |                               |  |                |             |
|-------------------------------|---|-------------------------------|--|----------------|-------------|
| <b>LOADING</b> (psf)          | <b>SPACING-</b>                                 | <b>CSI.</b>                   | <b>DEFL.</b>   | <b>PLATES</b>  | <b>GRIP</b> |
| TCLL 25.0<br>(Roof Snow=25.0) | 2-0-0<br>Plate Grip DOL 1.15<br>Lumber DOL 1.15 | TC 0.94<br>BC 0.49<br>WB 0.82 | in (loc) l/defl L/d<br>Vert(LL) -0.15 12-13 >999 360<br>Vert(CT) -0.26 10-12 >999 240<br>Horz(CT) 0.21 8 n/a n/a | MT20           | 185/148     |
| TCDL 8.0                      | Rep Stress Incr YES                             | Matrix-MSH                    |  |                |             |
| BCLL 0.0 *                    | Code IBC2021/TPI2014                            |                               |  |                |             |
| BCDL 7.0                      |   |                               |  | Weight: 169 lb | FT = 20%    |

**LUMBER-**  
 TOP CHORD 2x4 HF-N No.1/No.2  
 BOT CHORD 2x4 HF-N No.1/No.2  
 WEBS 2x4 DF Stud \*Except\*  
 W6,W7: 2x4 HF-N No.1/No.2, W1,W11: 2x6 DF SS

**BRACING-**  
 TOP CHORD Structural wood sheathing directly applied, except end verticals.  
 BOT CHORD Rigid ceiling directly applied or 10-0-0 oc bracing.

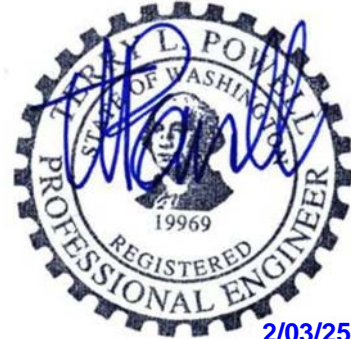
MiTek recommends that Stabilizers and required cross bracing be installed during truss erection, in accordance with Stabilizer Installation guide.

**REACTIONS.** (lb/size) 8=1258/0-5-8 (min. 0-2-1), 14=1258/0-5-8 (min. 0-2-2)  
 Max Horz 14=231(LC 9)  
 Max Uplift 8=-63(LC 12), 14=-79(LC 12)  
 Max Grav 8=1258(LC 1), 14=1286(LC 18)

**FORCES.** (lb) - Max. Comp./Max. Ten. - All forces 250 (lb) or less except when shown.  
 TOP CHORD 1-2=-2629/228, 2-3=-2255/199, 3-4=-1476/106, 4-15=-1415/111, 15-16=-1309/121,  
 5-16=-1302/136, 5-17=-1677/185, 17-18=-1718/162, 6-18=-1818/151, 6-7=-1970/127,  
 1-14=-1290/149  
 BOT CHORD 13-14=-232/395, 12-13=-286/2249, 11-12=-148/1904, 10-11=-141/1924, 9-10=-45/1386  
 WEBS 2-12=-367/138, 3-12=-4/357, 3-10=-849/193, 5-10=-125/1568, 1-13=-100/1949,  
 7-8=-1227/81, 7-9=-33/1279

**NOTES-** (8)  
 1) Wind: ASCE 7-16; Vult=110mph (3-second gust) Vasd=87mph; TCDL=4.8psf; BCDL=4.2psf; h=25ft; Cat. II; Exp B; Enclosed; MWFRS (envelope) gable end zone and C-C Exterior(2E) 0-2-12 to 3-5-1, Interior(1) 3-5-1 to 18-1-1, Exterior(2R) 18-1-1 to 24-5-10, Interior(1) 24-5-10 to 28-5-15, Exterior(2E) 28-5-15 to 31-8-4 zone; cantilever left and right exposed; end vertical left and right exposed; C-C for members and forces & MWFRS for reactions shown; Lumber DOL=1.60 plate grip DOL=1.60  
 2) TCLL: ASCE 7-16; Pf=25.0 psf (Lum DOL = 1.15 Plate DOL = 1.15); Is=1.0; Rough Cat B; Partially Exp.; Ce=1.0; Cs=1.00; Ct=1.10  
 3) Unbalanced snow loads have been considered for this design.  
 4) This truss has been designed for a 10.0 psf bottom chord live load nonconcurrent with any other live loads.  
 5) \* This truss has been designed for a live load of 23.0psf on the bottom chord in all areas where a rectangle 3-6-0 tall by 2-0-0 wide will fit between the bottom chord and any other members.  
 6) Bearing at joint(s) 8, 14 considers parallel to grain value using ANSI/TPI 1 angle to grain formula. Building designer should verify capacity of bearing surface.  
 7) Provide mechanical connection (by others) of truss to bearing plate capable of withstanding 100 lb uplift at joint(s) 8, 14.  
 8) All dimensions given in feet-inches-sixteenths (FFIISS) format.

**LOAD CASE(S)** Standard



2/03/25

**WARNING - Verify design parameters and READ NOTES ON THIS AND INCLUDED MITEK REFERENCE PAGE MII-7473 BEFORE USE.**

Design valid for use only with MiTek connectors. This design is based only upon parameters shown, and is for an individual building component. Applicability of design parameters and proper incorporation of component is responsibility of building designer - not truss designer. Bracing shown is for lateral support of individual web members only. Additional temporary bracing to insure stability during construction is the responsibility of the erector. Additional permanent bracing of the overall structure is the responsibility of the building designer. For general guidance regarding fabrication, quality control, storage, delivery, erection and bracing, consult ANSI/TPI1 Quality Criteria, DSB-89 and BCS11 Building Component Safety Information available from Truss Plate Institute, 2670 Crain Highway, Suite 203 Waldorf, MD 20601



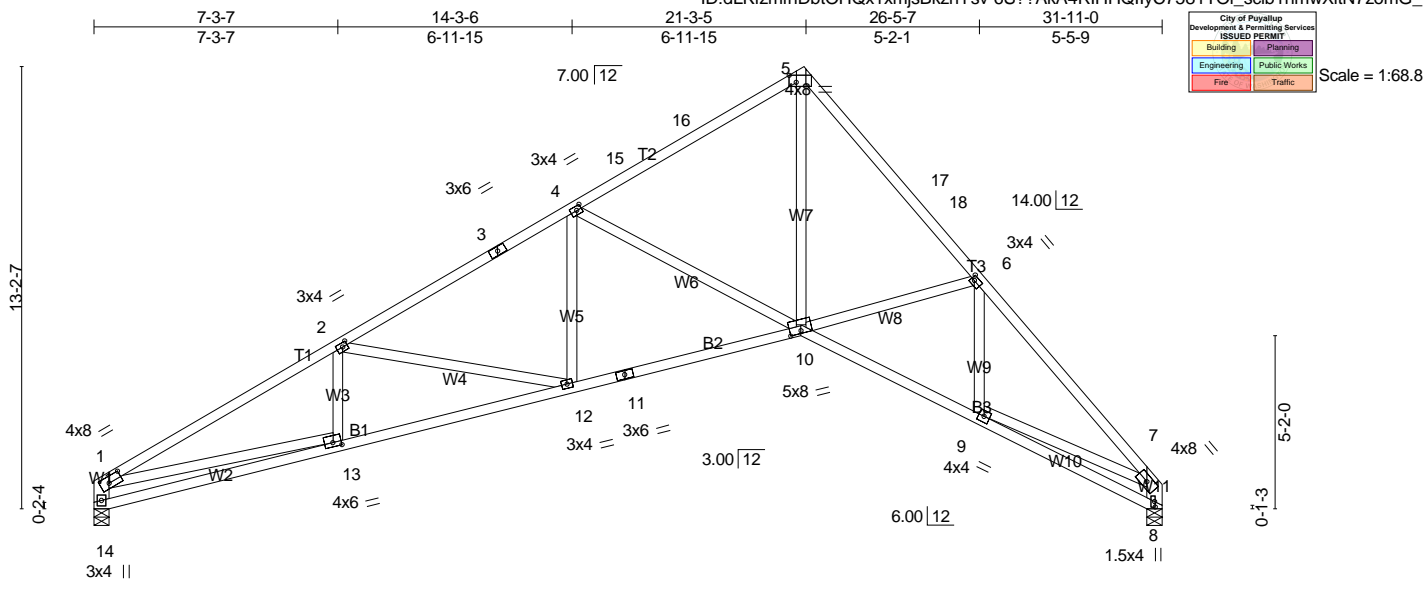


Plate Offsets (X,Y)-- [1:0-4-12,0-2-4], [2:0-1-12,0-1-8], [4:0-1-12,0-1-8], [5:Edge,0-2-9], [6:0-1-4,0-1-8], [8:0-2-0,0-0-4], [10:0-4-0,0-1-0], [13:0-3-0,0-1-8]

| LOADING (psf)                 | SPACING-  | CSI.                          | DEFL.  | PLATES         | GRIP     |
|-------------------------------|---|-------------------------------|--|----------------|----------|
| TCLL 25.0<br>(Roof Snow=25.0) | 2-0-0<br>Plate Grip DOL 1.15<br>Lumber DOL 1.15 | TC 0.88<br>BC 0.54<br>WB 0.83 | in (loc) l/defl L/d<br>Vert(LL) -0.18 12-13 >999 360<br>Vert(CT) -0.30 12-13 >999 240<br>Horz(CT) 0.24 8 n/a n/a | MT20           | 185/148  |
| TCDL 8.0                      | Rep Stress Incr YES                             | Matrix-MSH                    |  |                |          |
| BCLL 0.0 *                    | Code IBC2021/TPI2014                            |                               |  |                |          |
| BCDL 7.0                      |   |                               |  | Weight: 165 lb | FT = 20% |

**LUMBER-**  
 TOP CHORD 2x4 HF-N No.1/No.2  
 BOT CHORD 2x4 HF-N No.1/No.2  
 WEBS 2x4 DF Stud \*Except\*  
 W6,W7: 2x4 HF-N No.1/No.2, W1,W11: 2x6 DF SS

**BRACING-**  
 TOP CHORD Structural wood sheathing directly applied, except end verticals.  
 BOT CHORD Rigid ceiling directly applied or 10-0-0 oc bracing.

MiTek recommends that Stabilizers and required cross bracing be installed during truss erection, in accordance with Stabilizer Installation guide.

**REACTIONS.** (lb/size) 8=1258/0-5-8 (min. 0-2-1), 14=1258/0-5-8 (min. 0-2-2)  
 Max Horz 14=225(LC 9)  
 Max Uplift 8=-60(LC 12), 14=-80(LC 12)  
 Max Grav 8=1258(LC 1), 14=1285(LC 18)

**FORCES.** (lb) - Max. Comp./Max. Ten. - All forces 250 (lb) or less except when shown.  
 TOP CHORD 1-14=-1323/154, 1-2=-2898/247, 2-3=-2385/170, 3-4=-2176/201, 4-15=-1531/100,  
 15-16=-1369/114, 5-16=-1358/130, 5-17=-1781/176, 17-18=-1817/153, 6-18=-1924/142,  
 6-7=-2168/126  
 BOT CHORD 13-14=-218/527, 12-13=-300/2490, 11-12=-147/2019, 10-11=-139/2040, 9-10=-44/1532  
 WEBS 2-12=-476/152, 4-12=-5/380, 4-10=-903/195, 5-10=-115/1659, 6-10=-279/209,  
 7-8=-1226/77, 1-13=-100/2044, 7-9=-33/1449

**NOTES-** (8)  
 1) Wind: ASCE 7-16; Vult=110mph (3-second gust) Vasd=87mph; TCDL=4.8psf; BCDL=4.2psf; h=25ft; Cat. II; Exp B; Enclosed; MWFRS (envelope) gable end zone and C-C Exterior(2E) 0-2-12 to 3-5-1, Interior(1) 3-5-1 to 17-10-14, Exterior(2R) 17-10-14 to 24-3-7, 24-3-7 to 28-5-15, Exterior(2E) 28-5-15 to 31-8-4 zone; cantilever left and right exposed; end vertical left and right exposed; C-C for members and forces & MWFRS for reactions shown; Lumber DOL=1.60 plate grip DOL=1.60  
 2) TCLL: ASCE 7-16; Pf=25.0 psf (Lum DOL = 1.15 Plate DOL = 1.15); Is=1.0; Rough Cat B; Partially Exp.; Ce=1.0; Cs=1.00; Ct=1.10  
 3) Unbalanced snow loads have been considered for this design.  
 4) This truss has been designed for a 10.0 psf bottom chord live load nonconcurrent with any other live loads.  
 5) \* This truss has been designed for a live load of 23.0psf on the bottom chord in all areas where a rectangle 3-6-0 tall by 2-0-0 wide will fit between the bottom chord and any other members.  
 6) Bearing at joint(s) 8, 14 considers parallel to grain value using ANSI/TPI 1 angle to grain formula. Building designer should verify capacity of bearing surface.  
 7) Provide mechanical connection (by others) of truss to bearing plate capable of withstanding 100 lb uplift at joint(s) 8, 14.  
 8) All dimensions given in feet-inches-sixteenths (FFI/SS) format.

**LOAD CASE(S)** Standard



2/03/25

**WARNING - Verify design parameters and READ NOTES ON THIS AND INCLUDED MITEK REFERENCE PAGE MI-7473 BEFORE USE.**

Design valid for use only with MiTek connectors. This design is based only upon parameters shown, and is for an individual building component. Applicability of design parameters and proper incorporation of component is responsibility of building designer - not truss designer. Bracing shown is for lateral support of individual web members only. Additional temporary bracing to insure stability during construction is the responsibility of the erector. Additional permanent bracing of the overall structure is the responsibility of the building designer. For general guidance regarding fabrication, quality control, storage, delivery, erection and bracing, consult ANSI/TPI1 Quality Criteria, DSB-89 and BCS11 Building Component Safety Information available from Truss Plate Institute, 2670 Crain Highway, Suite 203 Waldorf, MD 20601



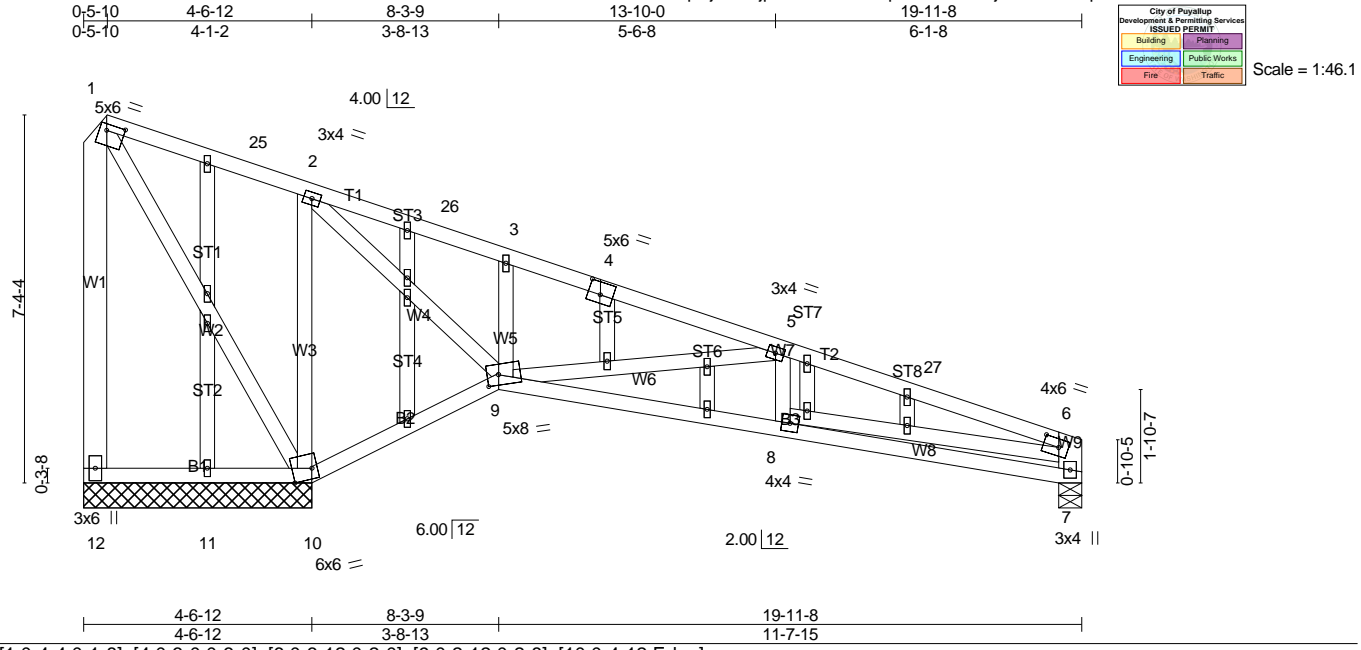


Plate Offsets (X,Y)-- [1:0-4-4,0-1-8], [4:0-3-0,0-3-0], [6:0-3-12,0-2-0], [9:0-2-12,0-2-8], [10:0-4-12,Edge]

|                               |  |             |                             |                |             |
|-------------------------------|--|-------------|-----------------------------|----------------|-------------|
| <b>LOADING</b> (psf)          | <b>SPACING-</b>                        | <b>CSI.</b> | <b>DEFL.</b>                | <b>PLATES</b>  | <b>GRIP</b> |
| TCLL 25.0<br>(Roof Snow=25.0) | 2-0-0                                  | TC 0.31     | in (loc) l/defl L/d         | MT20           | 185/148     |
| TCDL 8.0                      | Plate Grip DOL 1.15<br>Lumber DOL 1.15 | BC 0.23     | Vert(LL) -0.04 8 >999 360   |                |             |
| BCLL 0.0 *                    | Rep Stress Incr YES                    | WB 0.90     | Vert(CT) -0.07 8-9 >999 240 |                |             |
| BCDL 7.0                      | Code IBC2021/TPI2014                   | Matrix-MSH  | Horz(CT) 0.02 7 n/a n/a     |                |             |
|                               |  |             |                             | Weight: 130 lb | FT = 20%    |

|   |   |
|---|---|
| <b>LUMBER-</b><br>TOP CHORD 2x4 HF-N No.1/No.2<br>BOT CHORD 2x4 HF-N No.1/No.2<br>WEBS 2x4 DF Stud *Except*<br>W2: 2x4 HF-N No.1/No.2, W1,W9: 2x6 DF SS<br>OTHERS 2x4 DF Stud | <b>BRACING-</b><br>TOP CHORD Structural wood sheathing directly applied or 6-0-0 oc purlins, except end verticals.<br>BOT CHORD Rigid ceiling directly applied or 10-0-0 oc bracing, Except: 6-0-0 oc bracing: 9-10.<br><div style="border: 1px solid black; padding: 5px; margin-top: 5px;">MiTek recommends that Stabilizers and required cross bracing be installed during truss erection, in accordance with Stabilizer Installation guide.</div> |
|---|---|

**REACTIONS.** All bearings 4-6-12 except (jt=length) 7=0-5-8.  
(lb) - Max Horz 12=-202(LC 8)  
Max Uplift All uplift 100 lb or less at joint(s) 7 except 12=-461(LC 1), 10=-136(LC 9)  
Max Grav All reactions 250 lb or less at joint(s) 12, 11 except 10=1739(LC 19), 7=429(LC 1)

**FORCES.** (lb) - Max. Comp./Max. Ten. - All forces 250 (lb) or less except when shown.  
TOP CHORD 1-12=0/474, 6-7=-422/61, 1-25=0/538, 2-25=0/431, 5-27=-866/67, 6-27=-928/58  
BOT CHORD 9-10=-542/192, 8-9=-43/846  
WEBS 1-10=-895/14, 2-10=-690/89, 2-9=-23/558, 3-9=-324/91, 6-8=-10/613, 5-9=-892/151

- NOTES-** (11)
- 1) Wind: ASCE 7-16; Vult=110mph (3-second gust) Vasd=87mph; TCDL=4.8psf; BCDL=4.2psf; h=25ft; Cat. II; Exp B; Enclosed; MWFRS (envelope) gable end zone and C-C Exterior(2E) 0-2-12 to 3-2-12, Interior(1) 3-2-12 to 16-8-12, Exterior(2E) 16-8-12 to 19-8-12 zone; cantilever left and right exposed ; end vertical left and right exposed;C-C for members and forces & MWFRS for reactions shown; Lumber DOL=1.60 plate grip DOL=1.60
  - 2) Truss designed for wind loads in the plane of the truss only. For studs exposed to wind (normal to the face), see Standard Industry Gable End Details as applicable, or consult qualified building designer as per ANSI/TPI 1.
  - 3) TCLL: ASCE 7-16; Pf=25.0 psf (Lum DOL = 1.15 Plate DOL = 1.15); ls=1.0; Rough Cat B; Partially Exp.; Ce=1.0; Cs=1.00; Ct=1.10
  - 4) Unbalanced snow loads have been considered for this design.
  - 5) All plates are 1.5x4 MT20 unless otherwise indicated.
  - 6) Gable studs spaced at 2-0-0 oc.
  - 7) This truss has been designed for a 10.0 psf bottom chord live load nonconcurrent with any other live loads.
  - 8) \* This truss has been designed for a live load of 23.0psf on the bottom chord in all areas where a rectangle 3-6-0 tall by 2-0-0 wide will fit between the bottom chord and any other members.
  - 9) Bearing at joint(s) 7 considers parallel to grain value using ANSI/TPI 1 angle to grain formula. Building designer should verify capacity of bearing surface.
  - 10) Provide mechanical connection (by others) of truss to bearing plate capable of withstanding 100 lb uplift at joint(s) 7 except (jt=lb) 12=461, 10=136.
  - 11) All dimensions given in feet-inches-sixteenths (FFIISS) format.

**LOAD CASE(S)** Standard



2/03/25

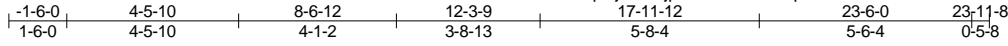
**WARNING - Verify design parameters and READ NOTES ON THIS AND INCLUDED MITEK REFERENCE PAGE MII-7473 BEFORE USE.**

Design valid for use only with MiTek connectors. This design is based only upon parameters shown, and is for an individual building component. Applicability of design parameters and proper incorporation of component is responsibility of building designer - not truss designer. Bracing shown is for lateral support of individual web members only. Additional temporary bracing to insure stability during construction is the responsibility of the erector. Additional permanent bracing of the overall structure is the responsibility of the building designer. For general guidance regarding fabrication, quality control, storage, delivery, erection and bracing, consult ANSI/TPI1 Quality Criteria, DSB-89 and BCS11 Building Component Safety Information available from Truss Plate Institute, 2670 Crain Highway, Suite 203 Waldorf, MD 20601

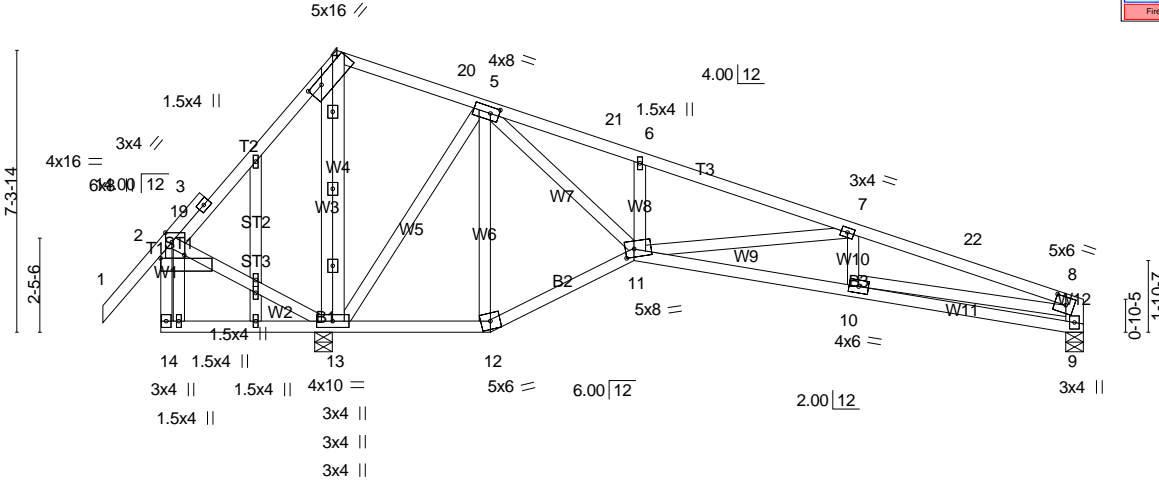


The Truss Company and Building Supply LLC, Sumner, WA

Run: 8.830 s Jan 17 2025 Print: 8.830 s Jan 17 2025 MiTek Industries, Inc. Mon Feb 3 16:36:17 2025 Page 1  
 ID:h4QDTpRjurTkdjpQTHdwEGzmqYo-2r7mbQCLzwY?fcSLJY8c6uT9SgJJ3zL3OrE\_R0zomFY



Scale = 1:59.8



|                       |  |
|-----------------------|--|
| Plate Offsets (X,Y)-- | [2:0-7-6,0-0-15], [2:Edge,0-2-0], [4:0-4-3,0-1-13], [5:0-2-10,0-2-0], [8:0-3-8,0-2-8], [11:0-2-12,0-2-8] |
|-----------------------|--|

|                               |  |   |  |                |             |
|-------------------------------|--|---|--|----------------|-------------|
| <b>LOADING</b> (psf)          | <b>SPACING-</b>  | <b>CSI.</b>                                 | <b>DEFL.</b>   | <b>PLATES</b>  | <b>GRIP</b> |
| TCLL 25.0<br>(Roof Snow=25.0) | 2-0-0<br>Plate Grip DOL 1.15<br>Lumber DOL 1.15<br>Rep Stress Incr YES<br>Code IBC2021/TPI2014 | TC 0.43<br>BC 0.46<br>WB 0.76<br>Matrix-MSH | in (loc) l/defl L/d<br>Vert(LL) -0.13 10-11 >999 360<br>Vert(CT) -0.20 10-11 >999 240<br>Horz(CT) 0.09 9 n/a n/a | MT20           | 185/148     |
| TCDL 8.0                      |  |   |  |                |             |
| BCLL 0.0 *                    |  |   |  |                |             |
| BCDL 7.0                      |  |   |  |                |             |
|                               |  |   |  | Weight: 148 lb | FT = 20%    |

**LUMBER-**  
 TOP CHORD 2x4 HF-N No.1/No.2  
 BOT CHORD 2x4 HF-N No.1/No.2  
 WEBS 2x4 DF Stud \*Except\*  
 W12: 2x6 DF SS, W4: 2x4 HF-N No.1/No.2  
 OTHERS 2x4 DF Stud

**BRACING-**  
 TOP CHORD Structural wood sheathing directly applied or 3-10-7 oc purlins, except end verticals.  
 BOT CHORD Rigid ceiling directly applied or 10-0-0 oc bracing, Except: 6-0-0 oc bracing: 13-14.  
 MiTek recommends that Stabilizers and required cross bracing be installed during truss erection, in accordance with Stabilizer Installation guide.

**REACTIONS.** (lb/size) 9=703/0-5-8 (min. 0-1-8), 13=1293/0-5-8 (min. 0-2-2)  
 Max Horz 13=-170(LC 10)  
 Max Uplift 9=-67(LC 9), 13=-80(LC 13)  
 Max Grav 9=774(LC 20), 13=1293(LC 1)

**FORCES.** (lb) - Max. Comp./Max. Ten. - All forces 250 (lb) or less except when shown.  
 TOP CHORD 3-4=-60/533, 8-9=-771/93, 4-20=-29/256, 5-21=-1478/159, 6-21=-1579/148, 6-7=-1607/123,  
 7-22=-2117/184, 8-22=-2180/174  
 BOT CHORD 12-13=0/432, 11-12=0/490, 10-11=-154/2043, 9-10=-40/306  
 WEBS 4-13=-647/125, 5-13=-911/113, 5-11=-104/1443, 6-11=-337/92, 7-11=-620/122,  
 2-13=-327/230, 8-10=-113/1715

- NOTES-** (11)
- 1) Wind: ASCE 7-16; Vult=110mph (3-second gust) Vasd=87mph; TCCL=4.8psf; BCCL=4.2psf; h=25ft; Cat. II; Exp B; Enclosed; MWFRS (envelope) gable end zone and C-C Exterior(2E) -1-6-0 to 1-6-0, Exterior(2R) 1-6-0 to 7-6-15, Interior(1) 7-6-15 to 20-8-12, Exterior(2E) 20-8-12 to 23-8-12 zone; cantilever left and right exposed; end vertical left and right exposed; C-C for members and forces & MWFRS for reactions shown; Lumber DOL=1.60 plate grip DOL=1.60
  - 2) Truss designed for wind loads in the plane of the truss only. For studs exposed to wind (normal to the face), see Standard Industry Gable End Details as applicable, or consult qualified building designer as per ANSI/TPI 1.
  - 3) TCLL: ASCE 7-16; Pf=25.0 psf (Lum DOL = 1.15 Plate DOL = 1.15); Is=1.0; Rough Cat B; Partially Exp.; Ce=1.0; Cs=1.00; Ct=1.10
  - 4) Unbalanced snow loads have been considered for this design.
  - 5) This truss has been designed for greater of min roof live load of 20.0 psf or 1.00 times flat roof load of 25.0 psf on overhangs non-concurrent with other live loads.
  - 6) Gable studs spaced at 2-0-0 oc.
  - 7) This truss has been designed for a 10.0 psf bottom chord live load nonconcurrent with any other live loads.
  - 8) \* This truss has been designed for a live load of 23.0psf on the bottom chord in all areas where a rectangle 3-6-0 tall by 2-0-0 wide will fit between the bottom chord and any other members.
  - 9) Bearing at joint(s) 9 considers parallel to grain value using ANSI/TPI 1 angle to grain formula. Building designer should verify capacity of bearing surface.
  - 10) Provide mechanical connection (by others) of truss to bearing plate capable of withstanding 100 lb uplift at joint(s) 9, 13.
  - 11) All dimensions given in feet-inches-sixteenths (FFIISS) format.

**LOAD CASE(S)** Standard



2/03/25

**WARNING - Verify design parameters and READ NOTES ON THIS AND INCLUDED MITEK REFERENCE PAGE MII-7473 BEFORE USE.**  
 Design valid for use only with MiTek connectors. This design is based only upon parameters shown, and is for an individual building component. Applicability of design parameters and proper incorporation of component is responsibility of building designer - not truss designer. Bracing shown is for lateral support of individual web members only. Additional temporary bracing to insure stability during construction is the responsibility of the erector. Additional permanent bracing of the overall structure is the responsibility of the building designer. For general guidance regarding fabrication, quality control, storage, delivery, erection and bracing, consult ANSI/TPI1 Quality Criteria, DSB-89 and BCS11 Building Component Safety Information available from Truss Plate Institute, 2670 Crain Highway, Suite 203 Waldorf, MD 20601



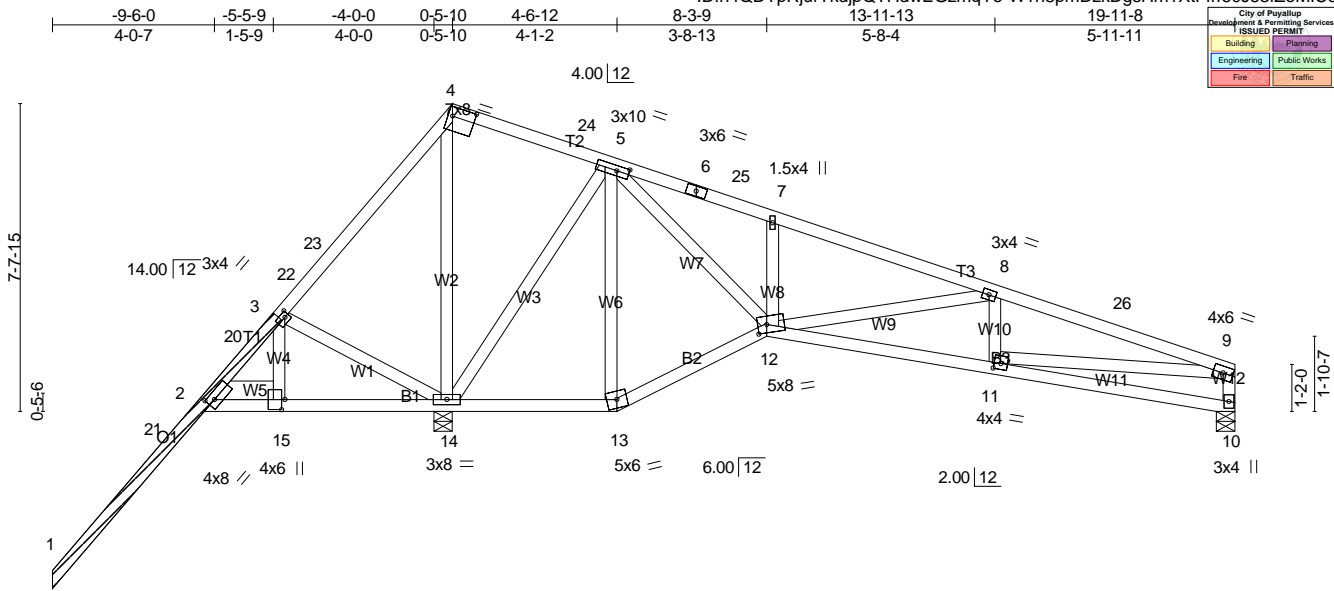


Plate Offsets (X,Y)-- [2:0-2-2,0-1-15], [3:0-1-4,0-1-8], [4:0-6-11,0-2-12], [5:0-3-10,0-1-8], [11:0-2-0,0-1-12], [12:0-2-12,0-2-8], [15:0-3-0,0-1-0]

| LOADING (psf)                 | SPACING-             | CSI.       | DEFL.                         | PLATES         | GRIP     |
|-------------------------------|----------------------|------------|-------------------------------|----------------|----------|
| TCLL 25.0<br>(Roof Snow=25.0) | Plate Grip DOL 1.15  | TC 0.50    | in (loc) l/defl L/d           | MT20           | 185/148  |
| TCDL 8.0                      | Lumber DOL 1.15      | BC 0.46    | Vert(LL) -0.10 11-12 >999 360 |                |          |
| BCLL 0.0 *                    | Rep Stress Incr YES  | WB 0.97    | Vert(CT) -0.15 11-12 >999 240 |                |          |
| BCDL 7.0                      | Code IBC2021/TPI2014 | Matrix-MSH | Horz(CT) 0.06 10 n/a n/a      |                |          |
|                               |                      |            |                               | Weight: 157 lb | FT = 20% |

| LUMBER-                                    | BRACING-   |
|--|--|
| TOP CHORD 2x4 HF-N No.1/No.2               | TOP CHORD Structural wood sheathing directly applied or 4-4-4 oc purlins, except end verticals.  |
| BOT CHORD 2x4 HF-N No.1/No.2               | BOT CHORD Rigid ceiling directly applied or 6-0-0 oc bracing.  |
| WEBS 2x4 DF Stud *Except*<br>W5: 2x6 DF SS | MiTek recommends that Stabilizers and required cross bracing be installed during truss erection, in accordance with Stabilizer Installation guide. |
| OTHERS 2x4 HF-N No.1/No.2                  |  |
| LBR SCAB 1-3 2x4 HF-N No.1/No.2 one side   |  |

**REACTIONS.** (lb/size) 10=603/0-5-8 (min. 0-1-8), 14=1689/0-5-8 (min. 0-2-12)  
 Max Horz 14=183(LC 16)  
 Max Uplift 10=-61(LC 9), 14=-93(LC 12)  
 Max Grav 10=729(LC 20), 14=1689(LC 1)

**FORCES.** (lb) - Max. Comp./Max. Ten. - All forces 250 (lb) or less except when shown.  
 TOP CHORD 3-20=-584/726, 3-22=-389/630, 22-23=-379/699, 4-23=-371/983, 4-24=-180/545,  
 5-24=-191/510, 5-6=-1119/129, 6-25=-1172/122, 7-25=-1219/118, 7-8=-1247/92,  
 8-26=-1675/142, 9-26=-1738/133, 9-10=-708/85  
 BOT CHORD 2-15=-433/622, 14-15=-433/622, 13-14=-256/291, 12-13=-291/335, 11-12=-118/1619  
 WEBS 4-14=-1088/443, 5-14=-916/114, 5-12=-88/1205, 7-12=-327/90, 8-12=-605/189,  
 9-11=-89/1434

- NOTES-** (10)
- Attached 8-9-8 scab 1 to 3, back face(s) 2x4 HF-N No.1/No.2 with 1 row(s) of 10d (0.131"x3") nails spaced 9" o.c. except : starting at 3-7-5 from end at joint 1, nail 1 row(s) at 3" o.c. for 4-2-6.
  - Wind: ASCE 7-16; Vult=110mph (3-second gust) Vasd=87mph; TCDL=4.8psf; BCDL=4.2psf; h=25ft; Cat. II; Exp B; Enclosed; MWFRS (envelope) gable end zone and C-C Exterior(2E) -9-6-0 to -6-6-0, Interior(1) -6-6-0 to -2-6-6, Exterior(2R) -2-6-6 to 3-5-10, Interior(1) 3-5-10 to 16-9-12, Exterior(2E) 16-9-12 to 19-9-12 zone; cantilever left and right exposed ; end vertical left and right exposed; C-C for members and forces & MWFRS for reactions shown; Lumber DOL=1.60 plate grip DOL=1.60
  - TCLL: ASCE 7-16; Pf=25.0 psf (Lum DOL = 1.15 Plate DOL = 1.15); Is=1.0; Rough Cat B; Partially Exp.; Ce=1.0; Cs=1.00; Ct=1.10
  - Unbalanced snow loads have been considered for this design.
  - This truss has been designed for greater of min roof live load of 20.0 psf or 1.00 times flat roof load of 25.0 psf on overhangs non-concurrent with other live loads.
  - This truss has been designed for a 10.0 psf bottom chord live load nonconcurrent with any other live loads.
  - \* This truss has been designed for a live load of 23.0psf on the bottom chord in all areas where a rectangle 3-6-0 tall by 2-0-0 wide will fit between the bottom chord and any other members.
  - Bearing at joint(s) 10 considers parallel to grain value using ANSI/TPI 1 angle to grain formula. Building designer should verify capacity of bearing surface.
  - Provide mechanical connection (by others) of truss to bearing plate capable of withstanding 100 lb uplift at joint(s) 10, 14.
  - All dimensions given in feet-inches-sixteenths (FFIIS) format.

**LOAD CASE(S)** Standard

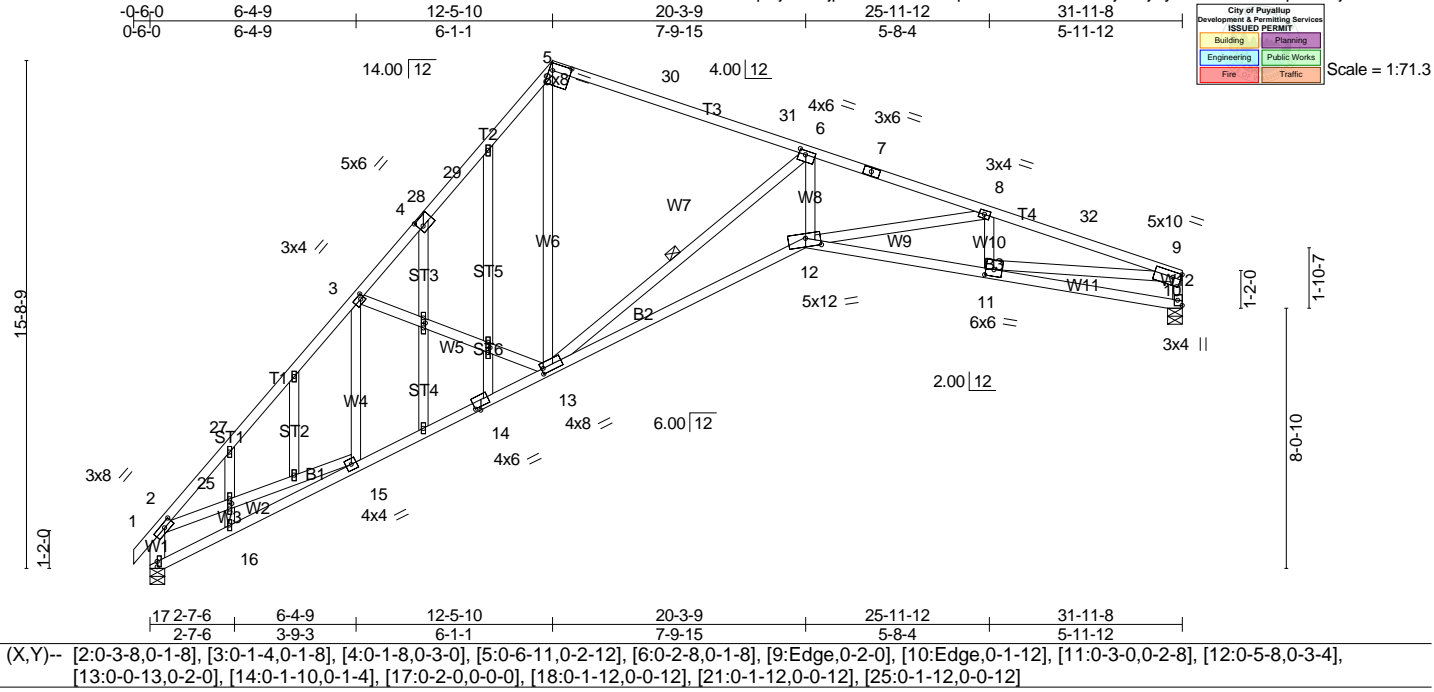


2/03/25

**WARNING - Verify design parameters and READ NOTES ON THIS AND INCLUDED MITEK REFERENCE PAGE MII-7473 BEFORE USE.**

Design valid for use only with MiTek connectors. This design is based only upon parameters shown, and is for an individual building component. Applicability of design parameters and proper incorporation of component is responsibility of building designer - not truss designer. Bracing shown is for lateral support of individual web members only. Additional temporary bracing to insure stability during construction is the responsibility of the erector. Additional permanent bracing of the overall structure is the responsibility of the building designer. For general guidance regarding fabrication, quality control, storage, delivery, erection and bracing, consult ANSI/TPI1 Quality Criteria, DSB-89 and BCS11 Building Component Safety Information available from Truss Plate Institute, 2670 Crain Highway, Suite 203 Waldorf, MD 20601





|   |  |   |  |                        |                     |
|---|--|---|--|------------------------|---------------------|
| <b>LOADING (psf)</b>  | <b>SPACING-</b>  | <b>CSI.</b>                                 | <b>DEFL.</b>   | <b>PLATES</b>          | <b>GRIP</b>         |
| TCLL 25.0<br>(Roof Snow=25.0)<br>TCDL 8.0<br>BCLL 0.0 *<br>BCDL 7.0 | 2-0-0<br>Plate Grip DOL 1.15<br>Lumber DOL 1.15<br>Rep Stress Incr YES<br>Code IBC2021/TPI2014 | TC 1.00<br>BC 0.85<br>WB 0.99<br>Matrix-MSH | in (loc) l/defl L/d<br>Vert(LL) -0.38 12 >991 360<br>Vert(CT) -0.62 12-13 >611 240<br>Horz(CT) 0.50 10 n/a n/a | MT20<br>Weight: 195 lb | 185/148<br>FT = 20% |

**LUMBER-**  
 TOP CHORD 2x4 HF-N No.1/No.2 \*Except\*  
 T3: 2x4 DF 1800F 1.6E or 2x4 DF No.1&Btr or 2x4 DF-N 1800F 1.6E  
 BOT CHORD 2x4 HF-N No.1/No.2  
 WEBS 2x4 DF Stud \*Except\*  
 W6: 2x4 HF-N No.1/No.2, W1: 2x6 DF SS, W7: 2x4 DF 2400F 2.0E  
 OTHERS 2x4 DF Stud

**BRACING-**  
 TOP CHORD Structural wood sheathing directly applied, except end verticals.  
 BOT CHORD Rigid ceiling directly applied or 6-0-0 oc bracing.  
 WEBS 1 Row at midpt 6-13  
 MiTek recommends that Stabilizers and required cross bracing be installed during truss erection, in accordance with Stabilizer Installation guide.

**REACTIONS.** (lb/size) 10=1263/0-5-8 (min. 0-2-2), 17=1312/0-5-8 (min. 0-2-3)  
 Max Horz 17=287(LC 12)  
 Max Uplift 10=-97(LC 13), 17=-26(LC 13)  
 Max Grav 10=1286(LC 20), 17=1312(LC 1)

**FORCES.** (lb) - Max. Comp./Max. Ten. - All forces 250 (lb) or less except when shown.  
 TOP CHORD 2-27=-2009/300, 3-27=-1916/328, 3-4=-1767/310, 4-28=-1645/324, 28-29=-1622/328,  
 5-29=-1607/351, 5-30=-1063/293, 30-31=-1075/281, 6-31=-1166/271, 6-7=-3574/517,  
 7-8=-3678/502, 8-32=-3376/444, 9-32=-3443/435, 9-10=-1268/188  
 BOT CHORD 16-17=-327/252, 15-16=-324/274, 14-15=-359/1380, 13-14=-340/1413, 12-13=-457/4009,  
 11-12=-367/3244  
 WEBS 3-13=-293/229, 5-13=-211/1130, 6-12=-199/2359, 8-12=-62/263, 8-11=-425/111,  
 9-11=-341/2971, 2-17=-1265/264, 2-25=-87/1309, 15-25=-82/1305, 6-13=-3372/374

- NOTES-** (12)
- 1) Wind: ASCE 7-16; Vult=110mph (3-second gust) Vasd=87mph; TCDL=4.8psf; BCDL=4.2psf; h=25ft; Cat. II; Exp B; Enclosed; MWFRS (envelope) gable end zone and C-C Exterior(2E) -0-6-0 to 2-8-6, Interior(1) 2-8-6 to 9-3-5, Exterior(2R) 9-3-5 to 15-8-0, Interior(1) 15-8-0 to 28-7-6, Exterior(2E) 28-7-6 to 31-9-12 zone; cantilever left and right exposed; end vertical left and right exposed; C-C for members and forces & MWFRS for reactions shown; Lumber DOL=1.60 plate grip DOL=1.60
  - 2) Truss designed for wind loads in the plane of the truss only. For studs exposed to wind (normal to the face), see Standard Industry Gable End Details as applicable, or consult qualified building designer as per ANSI/TPI 1.
  - 3) TCLL: ASCE 7-16; Pf=25.0 psf (Lum DOL = 1.15 Plate DOL = 1.15); Is=1.0; Rough Cat B; Partially Exp.; Ce=1.0; Cs=1.00; Ct=1.10
  - 4) Unbalanced snow loads have been considered for this design.
  - 5) This truss has been designed for greater of min roof live load of 20.0 psf or 1.00 times flat roof load of 25.0 psf on overhangs non-concurrent with other live loads.
  - 6) All plates are 1.5x4 MT20 unless otherwise indicated.
  - 7) Gable studs spaced at 2-0-0 oc.
  - 8) This truss has been designed for a 10.0 psf bottom chord live load nonconcurrent with any other live loads.
  - 9) \* This truss has been designed for a live load of 23.0psf on the bottom chord in all areas where a rectangle 3-6-0 tall by 2-0-0 wide will fit between the bottom chord and any other members.
  - 10) Bearing at joint(s) 10, 17 considers parallel to grain value using ANSI/TPI 1 angle to grain formula. Building designer should verify capacity of bearing surface.

Continued on page 2



2/03/25

**WARNING - Verify design parameters and READ NOTES ON THIS AND INCLUDED MITEK REFERENCE PAGE MII-7473 BEFORE USE.**

Design valid for use only with MiTek connectors. This design is based only upon parameters shown, and is for an individual building component. Applicability of design parameters and proper incorporation of component is responsibility of building designer - not truss designer. Bracing shown is for lateral support of individual web members only. Additional temporary bracing to insure stability during construction is the responsibility of the erector. Additional permanent bracing of the overall structure is the responsibility of the building designer. For general guidance regarding fabrication, quality control, storage, delivery, erection and bracing, consult ANSI/TPI1 Quality Criteria, DSB-89 and BCS11 Building Component Safety Information available from Truss Plate Institute, 2670 Crain Highway, Suite 203 Waldorf, MD 20601



|           |       |                      |     |     |                          |
|-----------|-------|----------------------|-----|-----|--------------------------|
| Job       | Truss | Truss Type           | Qty | Ply | Vitaly Kravchishin       |
| J1177148A | A7    | ROOF SPECIAL STRUCTU | 1   | 1   | Job Reference (optional) |

The Truss Company and Building Supply LLC, Sumner, WA

Run: 8.810 s Sep 13 2024 Print: 8.830 s Jan 17 2025 MiTek Industries, Inc. Mon Feb 3 16:36:19 2025 Page 2  
 ID:h4QDTpRjurTkdjpQTHdwEGzmqYo-?EFW05DbVXojvwjRyA4BJZM3TvlXpCMr9j4VuzomFw

**NOTES-** (12)

- 11) Provide mechanical connection (by others) of truss to bearing plate capable of withstanding 100 lb uplift at joint(s) 10, 17.
- 12) All dimensions given in feet-inches-sixteenths (FFIISS) format.



**LOAD CASE(S)** Standard



2/03/25

**WARNING - Verify design parameters and READ NOTES ON THIS AND INCLUDED MITEK REFERENCE PAGE MI-7473 BEFORE USE.**  
 Design valid for use only with MiTek connectors. This design is based only upon parameters shown, and is for an individual building component.  
 Applicability of design parameters and proper incorporation of component is responsibility of building designer - not truss designer. Bracing shown is for lateral support of individual web members only. Additional temporary bracing to insure stability during construction is the responsibility of the erector. Additional permanent bracing of the overall structure is the responsibility of the building designer. For general guidance regarding fabrication, quality control, storage, delivery, erection and bracing, consult ANSI/TPI1 Quality Criteria, DSB-89 and BCS11 Building Component Safety Information available from Truss Plate Institute, 2670 Crain Highway, Suite 203 Waldorf, MD 20601



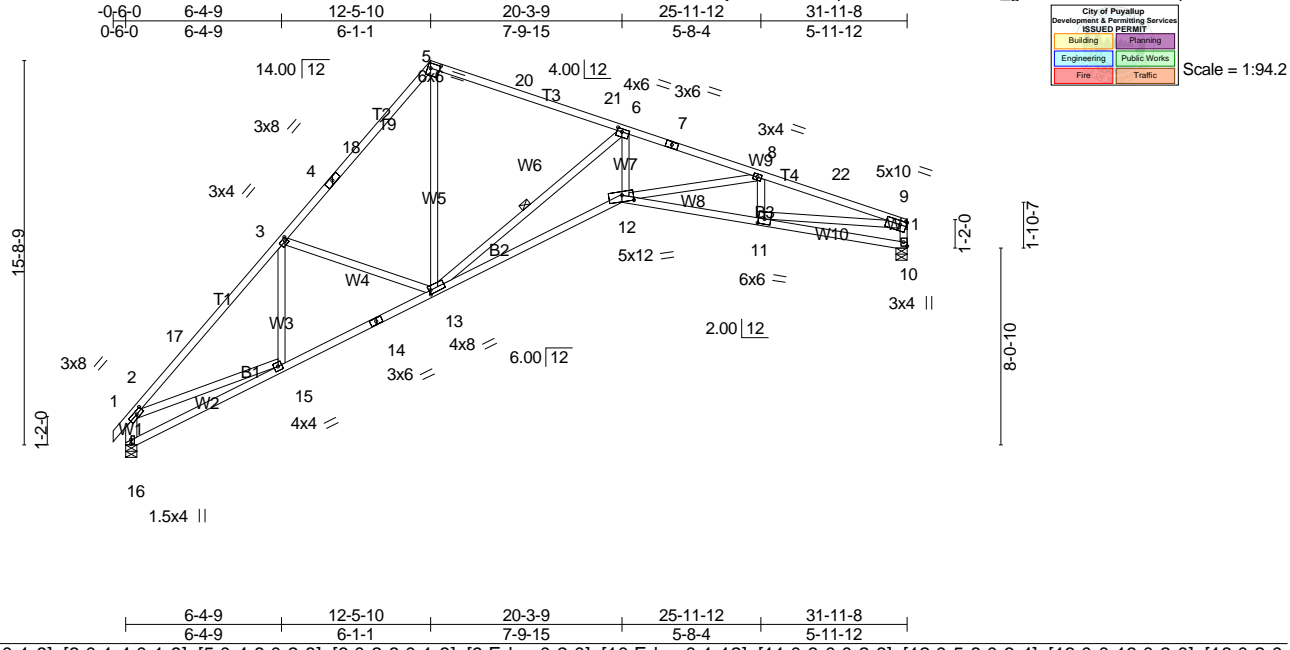


Plate Offsets (X,Y)-- [2:0-3-8,0-1-8], [3:0-1-4,0-1-8], [5:0-4-8,0-2-8], [6:0-2-8,0-1-8], [9:Edge,0-2-0], [10:Edge,0-1-12], [11:0-3-0,0-2-8], [12:0-5-8,0-3-4], [13:0-0-13,0-2-0], [16:0-2-0,0-0-0]

|                                    |   |   |  |                |             |
|------------------------------------|---|---|--|----------------|-------------|
| <b>LOADING</b> (psf)               | <b>SPACING-</b>                             | <b>CSI.</b>                                 | <b>DEFL</b>  | <b>PLATES</b>  | <b>GRIP</b> |
| TCLL 25.0<br>(Roof Snow=25.0)      | Plate Grip DOL 1.15<br>Lumber DOL 1.15      | TC 0.79<br>BC 0.84<br>WB 1.00<br>Matrix-MSH | in (loc) l/defl L/d<br>Vert(LL) -0.37 12 >999 360<br>Vert(CT) -0.60 12-13 >636 240<br>Horz(CT) 0.49 10 n/a n/a | MT20           | 185/148     |
| TCDL 8.0<br>BCLL 0.0 *<br>BCDL 7.0 | Rep Stress Incr YES<br>Code IBC2021/TPI2014 |   |  | Weight: 169 lb | FT = 20%    |

**LUMBER-**  
**TOP CHORD** 2x4 HF-N No.1/No.2 \*Except\*  
 T3: 2x4 DF 2400F 2.0E  
**BOT CHORD** 2x4 HF-N No.1/No.2  
**WEBS** 2x4 DF Stud \*Except\*  
 W5: 2x4 HF-N No.1/No.2, W6: 2x4 DF 2400F 2.0E, W1: 2x6 DF SS

**BRACING-**  
**TOP CHORD** Structural wood sheathing directly applied, except end verticals.  
**BOT CHORD** Rigid ceiling directly applied or 9-2-14 oc bracing.  
**WEBS** 1 Row at midpt 6-13  
 MiTek recommends that Stabilizers and required cross bracing be installed during truss erection, in accordance with Stabilizer Installation guide.

**REACTIONS.** (lb/size) 10=1263/0-5-8 (min. 0-2-2), 16=1312/0-5-8 (min. 0-2-3)  
 Max Horz 16=287(LC 12)  
 Max Uplift 10=-97(LC 13), 16=-26(LC 13)  
 Max Grav 10=1286(LC 20), 16=1312(LC 1)

**FORCES.** (lb) - Max. Comp./Max. Ten. - All forces 250 (lb) or less except when shown.  
**TOP CHORD** 2-17=-2008/298, 3-17=-1915/325, 3-4=-1756/304, 4-18=-1634/318, 18-19=-1611/321,  
 5-19=-1595/345, 5-20=-1092/295, 20-21=-1103/284, 6-21=-1195/273, 6-7=-3570/517,  
 7-8=-3674/502, 8-22=-3379/444, 9-22=-3446/435, 9-10=-1268/188  
**BOT CHORD** 15-16=-329/276, 14-15=-359/1378, 13-14=-338/1413, 12-13=-456/4003, 11-12=-368/3247  
**WEBS** 3-13=-297/228, 5-13=-207/1130, 6-13=-3351/373, 6-12=-201/2356, 8-12=-62/256,  
 8-11=-425/112, 9-11=-342/2975, 2-15=-82/1306, 2-16=-1274/271

- NOTES-** (9)
- 1) Wind: ASCE 7-16; Vult=110mph (3-second gust) Vasd=87mph; TC DL=4.8psf; BCDL=4.2psf; h=25ft; Cat. II; Exp B; Enclosed; MWFRS (envelope) gable end zone and C-C Exterior(2E) -0-6-0 to 2-8-6, Interior(1) 2-8-6 to 9-3-5, Exterior(2R) 9-3-5 to 15-8-0, Interior(1) 15-8-0 to 28-7-6, Exterior(2E) 28-7-6 to 31-9-12 zone; cantilever left and right exposed; end vertical left and right exposed; C-C for members and forces & MWFRS for reactions shown; Lumber DOL=1.60 plate grip DOL=1.60
  - 2) TCLL: ASCE 7-16; Pf=25.0 psf (Lum DOL = 1.15 Plate DOL = 1.15); Is=1.0; Rough Cat B; Partially Exp.; Ce=1.0; Cs=1.00; Ct=1.10
  - 3) Unbalanced snow loads have been considered for this design.
  - 4) This truss has been designed for greater of min roof live load of 20.0 psf or 1.00 times flat roof load of 25.0 psf on overhangs non-concurrent with other live loads.
  - 5) This truss has been designed for a 10.0 psf bottom chord live load nonconcurrent with any other live loads.
  - 6) \* This truss has been designed for a live load of 23.0psf on the bottom chord in all areas where a rectangle 3-6-0 tall by 2-0-0 wide will fit between the bottom chord and any other members.
  - 7) Bearing at joint(s) 10, 16 considers parallel to grain value using ANSI/TPI 1 angle to grain formula. Building designer should verify capacity of bearing surface.
  - 8) Provide mechanical connection (by others) of truss to bearing plate capable of withstanding 100 lb uplift at joint(s) 10, 16.
  - 9) All dimensions given in feet-inches-sixteenths (FFI/SS) format.

**LOAD CASE(S)** Standard



2/03/25

**WARNING - Verify design parameters and READ NOTES ON THIS AND INCLUDED MITEK REFERENCE PAGE MII-7473 BEFORE USE.**  
 Design valid for use only with MiTek connectors. This design is based only upon parameters shown, and is for an individual building component. Applicability of design parameters and proper incorporation of component is responsibility of building designer - not truss designer. Bracing shown is for lateral support of individual web members only. Additional temporary bracing to insure stability during construction is the responsibility of the erector. Additional permanent bracing of the overall structure is the responsibility of the building designer. For general guidance regarding fabrication, quality control, storage, delivery, erection and bracing, consult ANSI/TPI1 Quality Criteria, DSB-89 and BCS11 Building Component Safety Information available from Truss Plate Institute, 2670 Crain Highway, Suite 203 Waldorf, MD 20601





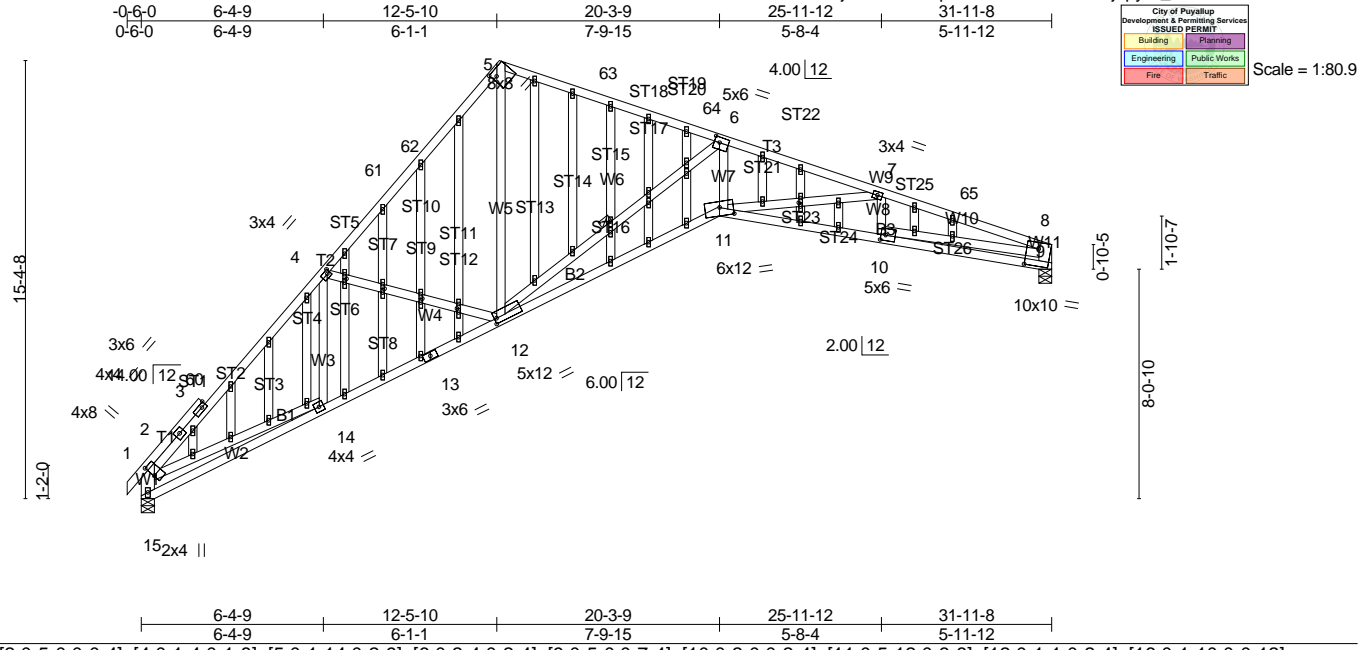


Plate Offsets (X,Y)-- [2:0-5-0,0-0-4], [4:0-1-4,0-1-8], [5:0-1-14,0-2-9], [6:0-2-4,0-2-4], [9:0-5-0,0-7-4], [10:0-2-0,0-2-4], [11:0-5-12,0-3-8], [12:0-1-1,0-2-4], [16:0-1-10,0-0-12], [19:0-1-10,0-0-12], [22:0-1-10,0-0-12], [25:0-1-10,0-0-12], [53:0-1-8,0-0-12]

|                      |                      |             |                               |                |             |
|----------------------|----------------------|-------------|-------------------------------|----------------|-------------|
| <b>LOADING</b> (psf) | <b>SPACING-</b>      | <b>CSI.</b> | <b>DEFL.</b>                  | <b>PLATES</b>  | <b>GRIP</b> |
| TCLL 25.0            | Plate Grip DOL 1.15  | TC 0.95     | in (loc) l/defl L/d           | MT20           | 185/148     |
| (Roof Snow=25.0)     | Lumber DOL 1.15      | BC 0.92     | Vert(LL) -0.46 11 >822 360    |                |             |
| TCDL 8.0             | Rep Stress Incr YES  | WB 0.90     | Vert(CT) -0.73 11-12 >519 240 |                |             |
| BCLL 0.0 *           | Code IBC2021/TPI2014 | Matrix-MSH  | Horz(CT) 0.60 9 n/a n/a       |                |             |
| BCDL 7.0             |                      |             |                               | Weight: 261 lb | FT = 20%    |

**LUMBER-**  
 TOP CHORD 2x4 HF-N No.1/No.2 \*Except\*  
 T2: 2x4 DF 2400F 2.0E  
 T3: 2x4 DF 1800F 1.6E or 2x4 DF No.1&Btr or 2x4 DF-N 1800F 1.6E  
 BOT CHORD 2x4 HF-N No.1/No.2  
 WEBS 2x4 DF Stud \*Except\*  
 W5,W10: 2x4 HF-N No.1/No.2, W11,W1: 2x6 DF SS  
 W6: 2x4 DF 2400F 2.0E  
 OTHERS 2x4 DF Stud \*Except\*  
 ST13: 2x4 HF-N No.1/No.2

**BRACING-**  
 TOP CHORD Structural wood sheathing directly applied, except end verticals.  
 BOT CHORD Rigid ceiling directly applied or 2-2-0 oc bracing.  
 WEBS 1 Row at midpt 6-12  
 MiTek recommends that Stabilizers and required cross bracing be installed during truss erection, in accordance with Stabilizer Installation guide.

**REACTIONS.** (lb/size) 9=1259/0-5-8 (min. 0-2-2), 15=1309/0-5-8 (min. 0-2-2)  
 Max Horz 15=283(LC 12)  
 Max Uplift 9=-95(LC 13), 15=-25(LC 13)  
 Max Grav 9=1281(LC 20), 15=1309(LC 1)

**FORCES.** (lb) - Max. Comp./Max. Ten. - All forces 250 (lb) or less except when shown.  
 TOP CHORD 8-9=-1287/192, 2-3=-2138/315, 3-6=-2074/317, 4-60=-2056/345, 4-61=-1839/308,  
 61-62=-1686/325, 5-62=-1666/349, 5-63=-1129/297, 63-64=-1139/285, 6-64=-1224/275,  
 6-7=-4064/567, 7-65=-3920/512, 8-65=-3988/503  
 BOT CHORD 14-15=-347/354, 13-14=-384/1511, 12-13=-363/1545, 11-12=-523/4453, 10-11=-440/3768,  
 9-10=-51/426  
 WEBS 4-12=-354/233, 5-12=-207/1192, 6-11=-245/2677, 7-10=-331/100, 6-12=-3767/428,  
 2-15=-1352/289, 2-14=-78/1282, 8-10=-385/3305

- NOTES-** (12)
- 1) Wind: ASCE 7-16; Vult=110mph (3-second gust) Vasd=87mph; TCCL=4.8psf; BCDL=4.2psf; h=25ft; Cat. II; Exp B; Enclosed; MWFRS (envelope) gable end zone and C-C Exterior(2E) -0-6-0 to 2-8-6, Interior(1) 2-8-6 to 9-5-9, Exterior(2R) 9-5-9 to 15-10-4, Interior(1) 15-10-4 to 28-6-6, Exterior(2E) 28-6-6 to 31-8-12 zone; cantilever left and right exposed ; end vertical left and right exposed;C-C for members and forces & MWFRS for reactions shown; Lumber DOL=1.60 plate grip DOL=1.60
  - 2) Truss designed for wind loads in the plane of the truss only. For studs exposed to wind (normal to the face), see Standard Industry Gable End Details as applicable, or consult qualified building designer as per ANSI/TPI 1.
  - 3) TCCL: ASCE 7-16; Pf=25.0 psf (Lum DOL = 1.15 Plate DOL = 1.15); Is=1.0; Rough Cat B; Partially Exp.; Ce=1.0; Cs=1.00; Ct=1.10
  - 4) Unbalanced snow loads have been considered for this design.
  - 5) This truss has been designed for greater of min roof live load of 20.0 psf or 1.00 times flat roof load of 25.0 psf on overhangs non-concurrent with other live loads.
  - 6) All plates are 1.5x4 MT20 unless otherwise indicated.
  - 7) Gable studs spaced at 1-4-0 oc.
  - 8) This truss has been designed for a 10.0 psf bottom chord live load nonconcurrent with any other live loads.



Continued on page 2

2/03/25

**WARNING - Verify design parameters and READ NOTES ON THIS AND INCLUDED MITEK REFERENCE PAGE MI-7473 BEFORE USE.**  
 Design valid for use only with MiTek connectors. This design is based only upon parameters shown, and is for an individual building component. Applicability of design parameters and proper incorporation of component is responsibility of building designer - not truss designer. Bracing shown is for lateral support of individual web members only. Additional temporary bracing to insure stability during construction is the responsibility of the erector. Additional permanent bracing of the overall structure is the responsibility of the building designer. For general guidance regarding fabrication, quality control, storage, delivery, erection and bracing, consult ANSI/TPI1 Quality Criteria, DSB-89 and BCS11 Building Component Safety Information available from Truss Plate Institute, 2670 Crain Highway, Suite 203 Waldorf, MD 20601



|           |       |                      |     |     |                          |
|-----------|-------|----------------------|-----|-----|--------------------------|
| Job       | Truss | Truss Type           | Qty | Ply | Vitaly Kravchishin       |
| J1177148A | A9    | ROOF SPECIAL STRUCTU | 1   | 1   | Job Reference (optional) |

The Truss Company and Building Supply LLC, Sumner, WA

Run: 8.830 s Jan 17 2025 Print: 8.830 s Jan 17 2025 MiTek Industries, Inc. Mon Feb 3 16:36:22 2025 Page 2  
 ID:dLKfzmfhDbtOHQx1xmjsBkznYsv-Ppwfe7GToSAImNL65jnpYBt\_hvHkCToX7xk6DzomFt

**NOTES-** (12)

- 9) \* This truss has been designed for a live load of 23.0psf on the bottom chord in all areas where a rectangle 3-6-0 tall by 2-0-0 wide will fit between the bottom chord and any other members.
- 10) Bearing at joint(s) 9, 15 considers parallel to grain value using ANSI/TPI 1 angle to grain formula. Building designer should verify capacity of bearing surface.
- 11) Provide mechanical connection (by others) of truss to bearing plate capable of withstanding 100 lb uplift at joint(s) 9, 15.
- 12) All dimensions given in feet-inches-sixteenths (FFIISS) format.



**LOAD CASE(S)** Standard



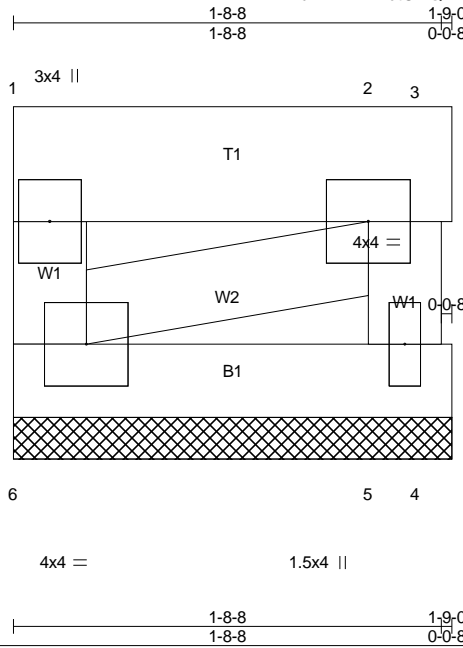
2/03/25

**WARNING - Verify design parameters and READ NOTES ON THIS AND INCLUDED MITEK REFERENCE PAGE MI-7473 BEFORE USE.**  
 Design valid for use only with MiTek connectors. This design is based only upon parameters shown, and is for an individual building component. Applicability of design parameters and proper incorporation of component is responsibility of building designer - not truss designer. Bracing shown is for lateral support of individual web members only. Additional temporary bracing to insure stability during construction is the responsibility of the erector. Additional permanent bracing of the overall structure is the responsibility of the building designer. For general guidance regarding fabrication, quality control, storage, delivery, erection and bracing, consult ANSI/TPI1 Quality Criteria, DSB-89 and BCS11 Building Component Safety Information available from Truss Plate Institute, 2670 Crain Highway, Suite 203 Waldorf, MD 20601



The Truss Company and Building Supply LLC, Sumner, WA

Run: 8.810 s Sep 13 2024 Print: 8.830 s Jan 17 2025 MiTek Industries, Inc. Mon Feb 3 16:36:23 2025 Page 1  
ID:dLkFzmfhDbtOHQx1xmjsBkznYsv-t?U1sTH6ZmI9NXwVgoF0M9jG84T9TqvxxmhlfzomFs



Scale = 1:9.2

**BEVEL - VENT - SCREEN  
MATCH 2X4**

|   |   |   |   |               |             |
|---|---|---|---|---------------|-------------|
| <b>LOADING (psf)</b>  | <b>SPACING-</b>   | <b>CSI.</b>                               | <b>DEFL.</b>  | <b>PLATES</b> | <b>GRIP</b> |
| TCLL 25.0<br>(Roof Snow=25.0)<br>TCDL 8.0<br>BCLL 0.0 *<br>BCDL 7.0 | 2-0-0<br>Plate Grip DOL 1.15<br>Lumber DOL 1.15<br>Rep Stress Incr NO<br>Code IBC2021/TPI2014 | TC 0.03<br>BC 0.05<br>WB 0.12<br>Matrix-P | in (loc) l/defl L/d<br>Vert(LL) n/a - n/a 999<br>Vert(CT) n/a - n/a 999<br>Horz(CT) -0.00 3 n/a n/a | MT20          | 185/148     |
|   |   |   |   | Weight: 9 lb  | FT = 20%    |

**LUMBER-**  
TOP CHORD 2x6 DF SS  
BOT CHORD 2x4 HF-N No. 1/No.2  
WEBS 2x4 DF Stud

**BRACING-**  
TOP CHORD Structural wood sheathing directly applied or 1-9-0 oc purlins, except end verticals.  
BOT CHORD Rigid ceiling directly applied or 6-0-0 oc bracing.

MiTek recommends that Stabilizers and required cross bracing be installed during truss erection, in accordance with Stabilizer Installation guide.

**REACTIONS.** (lb/size) 6=55/1-9-0 (min. 0-1-8), 3=11/1-9-0 (min. 0-1-8), 4=-15/1-9-0 (min. 0-1-8), 5=78/1-9-0 (min. 0-1-8)  
Max Horz 6=-16(LC 34)  
Max Uplift 6=-235(LC 29), 3=-152(LC 32), 4=-37(LC 4), 5=-73(LC 32)  
Max Grav 6=244(LC 50), 3=150(LC 49), 5=127(LC 25)

**FORCES.** (lb) - Max. Comp./Max. Ten. - All forces 250 (lb) or less except when shown.  
TOP CHORD 1-2=-362/360  
BOT CHORD 5-6=-366/366  
WEBS 2-6=-477/479

- NOTES-** (12)
- 1) Wind: ASCE 7-16; Vult=110mph (3-second gust) Vasd=87mph; TCDL=4.8psf; BCDL=4.2psf; h=25ft; Cat. II; Exp B; Enclosed; MWFRS (envelope) gable end zone and C-C Corner(3) zone; cantilever left and right exposed ; end vertical left and right exposed; C-C for members and forces & MWFRS for reactions shown; Lumber DOL=1.60 plate grip DOL=1.60
  - 2) Truss designed for wind loads in the plane of the truss only. For studs exposed to wind (normal to the face), see Standard Industry Gable End Details as applicable, or consult qualified building designer as per ANSI/TPI 1.
  - 3) TCLL: ASCE 7-16; Pf=25.0 psf (Lum DOL = 1.15 Plate DOL = 1.15); Is=1.0; Rough Cat B; Partially Exp.; Ce=1.0; Cs=1.00; Ct=1.10
  - 4) Provide adequate drainage to prevent water ponding.
  - 5) Gable requires continuous bottom chord bearing.
  - 6) Truss to be fully sheathed from one face or securely braced against lateral movement (i.e. diagonal web).
  - 7) Gable studs spaced at 2-0-0 oc.
  - 8) This truss has been designed for a 10.0 psf bottom chord live load nonconcurrent with any other live loads.
  - 9) \* This truss has been designed for a live load of 23.0psf on the bottom chord in all areas where a rectangle 3-6-0 tall by 2-0-0 wide will fit between the bottom chord and any other members.
  - 10) Provide mechanical connection (by others) of truss to bearing plate capable of withstanding 100 lb uplift at joint(s) 4, 5 except (jt=lb) 6=235, 3=152.
  - 11) This truss has been designed for a total drag load of 250 plf. Lumber DOL=(1.60) Plate grip DOL=(1.60) Connect truss to resist drag loads along bottom chord from 0-0-0 to 1-9-0 for 250.0 plf.
  - 12) All dimensions given in feet-inches-sixteenths (FFIIS) format.

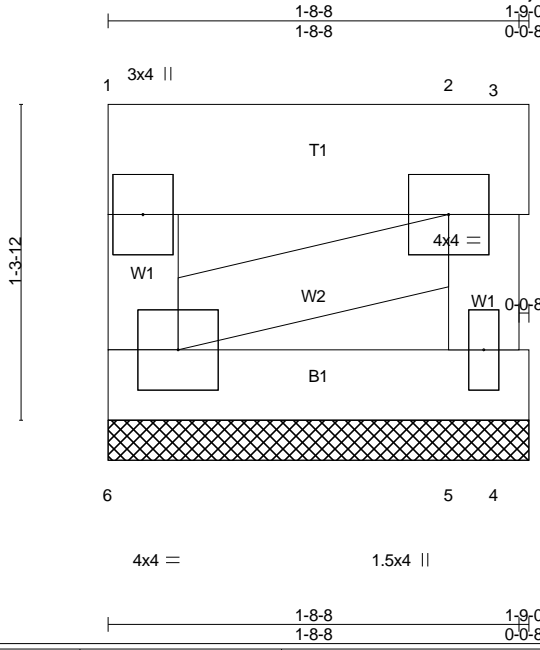
**LOAD CASE(S)** Standard



2/03/25

**WARNING - Verify design parameters and READ NOTES ON THIS AND INCLUDED MITEK REFERENCE PAGE MI-7473 BEFORE USE.**  
Design valid for use only with MiTek connectors. This design is based only upon parameters shown, and is for an individual building component. Applicability of design parameters and proper incorporation of component is responsibility of building designer - not truss designer. Bracing shown is for lateral support of individual web members only. Additional temporary bracing to insure stability during construction is the responsibility of the erector. Additional permanent bracing of the overall structure is the responsibility of the building designer. For general guidance regarding fabrication, quality control, storage, delivery, erection and bracing, consult ANSI/TPI1 Quality Criteria, DSB-89 and BCS11 Building Component Safety Information available from Truss Plate Institute, 2670 Crain Highway, Suite 203 Waldorf, MD 20601





BEVEL - VENT - SCREEN  
MATCH 2X4



Scale = 1:9.6

|                               |   |   |   |               |             |
|-------------------------------|---|---|---|---------------|-------------|
| <b>LOADING (psf)</b>          | <b>SPACING-</b>   | <b>CSI.</b>                               | <b>DEFL.</b>  | <b>PLATES</b> | <b>GRIP</b> |
| TCLL 25.0<br>(Roof Snow=25.0) | 2-0-0<br>Plate Grip DOL 1.15<br>Lumber DOL 1.15<br>Rep Stress Incr NO<br>Code IBC2021/TPI2014 | TC 0.03<br>BC 0.05<br>WB 0.12<br>Matrix-P | in (loc) l/defl L/d<br>Vert(LL) n/a - n/a 999<br>Vert(CT) n/a - n/a 999<br>Horz(CT) -0.00 3 n/a n/a | MT20          | 185/148     |
| TCDL 8.0                      |   |   |   | Weight: 9 lb  | FT = 20%    |
| BCLL 0.0 *                    |   |   |   |               |             |
| BCDL 7.0                      |   |   |   |               |             |

**LUMBER-**  
 TOP CHORD 2x6 DF SS  
 BOT CHORD 2x4 HF-N No.1/No.2  
 WEBS 2x4 DF Stud

**BRACING-**  
 TOP CHORD Structural wood sheathing directly applied or 1-9-0 oc purlins, except end verticals.  
 BOT CHORD Rigid ceiling directly applied or 6-0-0 oc bracing.

MiTek recommends that Stabilizers and required cross bracing be installed during truss erection, in accordance with Stabilizer Installation guide.

**REACTIONS.** (lb/size) 6=55/1-9-0 (min. 0-1-8), 3=13/1-9-0 (min. 0-1-8), 4=-15/1-9-0 (min. 0-1-8), 5=76/1-9-0 (min. 0-1-8)  
 Max Horz 6=-17(LC 34)  
 Max Uplift 6=-254(LC 29), 3=-169(LC 32), 4=-37(LC 4), 5=-75(LC 32)  
 Max Grav 6=263(LC 50), 3=167(LC 49), 5=127(LC 25)

**FORCES.** (lb) - Max. Comp./Max. Ten. - All forces 250 (lb) or less except when shown.  
 TOP CHORD 1-2=-363/361  
 BOT CHORD 5-6=-366/366  
 WEBS 2-6=-489/491

- NOTES-** (12)
- 1) Wind: ASCE 7-16; Vult=110mph (3-second gust) Vasd=87mph; TC DL=4.8psf; BCDL=4.2psf; h=25ft; Cat. II; Exp B; Enclosed; MWFRS (envelope) gable end zone and C-C Corner(3) zone; cantilever left and right exposed; end vertical left and right exposed; C-C for members and forces & MWFRS for reactions shown; Lumber DOL=1.60 plate grip DOL=1.60
  - 2) Truss designed for wind loads in the plane of the truss only. For studs exposed to wind (normal to the face), see Standard Industry Gable End Details as applicable, or consult qualified building designer as per ANSI/TPI 1.
  - 3) TCLL: ASCE 7-16; Pf=25.0 psf (Lum DOL = 1.15 Plate DOL = 1.15); Is=1.0; Rough Cat B; Partially Exp.; Ce=1.0; Cs=1.00; Ct=1.10
  - 4) Provide adequate drainage to prevent water ponding.
  - 5) Gable requires continuous bottom chord bearing.
  - 6) Truss to be fully sheathed from one face or securely braced against lateral movement (i.e. diagonal web).
  - 7) Gable studs spaced at 2-0-0 oc.
  - 8) This truss has been designed for a 10.0 psf bottom chord live load nonconcurrent with any other live loads.
  - 9) \* This truss has been designed for a live load of 23.0psf on the bottom chord in all areas where a rectangle 3-6-0 tall by 2-0-0 wide will fit between the bottom chord and any other members.
  - 10) Provide mechanical connection (by others) of truss to bearing plate capable of withstanding 100 lb uplift at joint(s) 4, 5 except (jt=lb) 6=254, 3=169.
  - 11) This truss has been designed for a total drag load of 250 plf. Lumber DOL=(1.60) Plate grip DOL=(1.60) Connect truss to resist drag loads along bottom chord from 0-0-0 to 1-9-0 for 250.0 plf.
  - 12) All dimensions given in feet-inches-sixteenths (FFIIS) format.

**LOAD CASE(S)** Standard



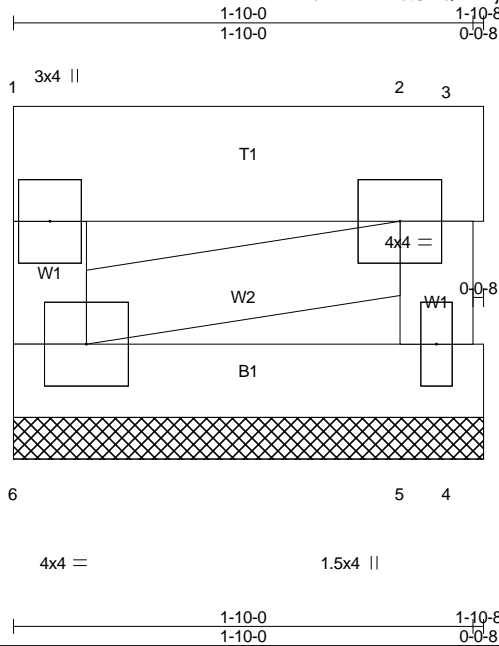
2/03/25

**WARNING - Verify design parameters and READ NOTES ON THIS AND INCLUDED MITEK REFERENCE PAGE MI-7473 BEFORE USE.**  
 Design valid for use only with MiTek connectors. This design is based only upon parameters shown, and is for an individual building component. Applicability of design parameters and proper incorporation of component is responsibility of building designer - not truss designer. Bracing shown is for lateral support of individual web members only. Additional temporary bracing to insure stability during construction is the responsibility of the erector. Additional permanent bracing of the overall structure is the responsibility of the building designer. For general guidance regarding fabrication, quality control, storage, delivery, erection and bracing, consult ANSI/TPI1 Quality Criteria, DSB-89 and BCS11 Building Component Safety Information available from Truss Plate Institute, 2670 Crain Highway, Suite 203 Waldorf, MD 20601



The Truss Company and Building Supply LLC, Sumner, WA

Run: 8.810 s Sep 13 2024 Print: 8.830 s Jan 17 2025 MiTek Industries, Inc. Mon Feb 3 16:36:25 2025 Page 1  
ID:dLKfzmfhDbtOHQx1xmjsBkznYsv-pOcnH9IM5NYsdr3tnDHURaocdu9ZxkJED4APjYzomFq



BEVEL - VENT - SCREEN  
MATCH 2X4



Scale = 1:9.2

|                               |                      |             |                          |               |             |
|-------------------------------|----------------------|-------------|--------------------------|---------------|-------------|
| <b>LOADING</b> (psf)          | <b>SPACING-</b>      | <b>CSI.</b> | <b>DEFL.</b>             | <b>PLATES</b> | <b>GRIP</b> |
| TCLL 25.0<br>(Roof Snow=25.0) | 2-0-0                | TC 0.03     | in (loc) l/defl L/d      | MT20          | 185/148     |
| TCDL 8.0                      | Plate Grip DOL 1.15  | BC 0.06     | Vert(LL) n/a - n/a 999   |               |             |
| BCLL 0.0 *                    | Lumber DOL 1.15      | WB 0.12     | Vert(CT) n/a - n/a 999   |               |             |
| BCDL 7.0                      | Rep Stress Incr NO   | Matrix-P    | Horz(CT) -0.00 3 n/a n/a |               |             |
|                               | Code IBC2021/TPI2014 |             |                          | Weight: 9 lb  | FT = 20%    |

**LUMBER-**  
TOP CHORD 2x6 DF SS  
BOT CHORD 2x4 HF-N No.1/No.2  
WEBS 2x4 DF Stud

**BRACING-**  
TOP CHORD Structural wood sheathing directly applied or 1-10-8 oc purlins, except end verticals.  
BOT CHORD Rigid ceiling directly applied or 6-0-0 oc bracing.

MiTek recommends that Stabilizers and required cross bracing be installed during truss erection, in accordance with Stabilizer Installation guide.

**REACTIONS.** (lb/size) 6=59/1-10-8 (min. 0-1-8), 3=6/1-10-8 (min. 0-1-8), 4=-19/1-10-8 (min. 0-1-8), 5=92/1-10-8 (min. 0-1-8)  
Max Horz 6=-16(LC 34)  
Max Uplift 6=-235(LC 29), 3=-147(LC 32), 4=-45(LC 4), 5=-77(LC 32)  
Max Grav 6=246(LC 50), 3=145(LC 33), 5=142(LC 25)

**FORCES.** (lb) - Max. Comp./Max. Ten. - All forces 250 (lb) or less except when shown.  
TOP CHORD 1-2=-393/391  
BOT CHORD 5-6=-394/394  
WEBS 2-6=-503/505

- NOTES-** (12)
- 1) Wind: ASCE 7-16; Vult=110mph (3-second gust) Vasd=87mph; TC DL=4.8psf; BCDL=4.2psf; h=25ft; Cat. II; Exp B; Enclosed; MWFRS (envelope) gable end zone and C-C Corner(3) zone; cantilever left and right exposed; end vertical left and right exposed; C-C for members and forces & MWFRS for reactions shown; Lumber DOL=1.60 plate grip DOL=1.60
  - 2) Truss designed for wind loads in the plane of the truss only. For studs exposed to wind (normal to the face), see Standard Industry Gable End Details as applicable, or consult qualified building designer as per ANSI/TPI 1.
  - 3) TCLL: ASCE 7-16; Pf=25.0 psf (Lum DOL = 1.15 Plate DOL = 1.15); Is=1.0; Rough Cat B; Partially Exp.; Ce=1.0; Cs=1.00; Ct=1.10
  - 4) Provide adequate drainage to prevent water ponding.
  - 5) Gable requires continuous bottom chord bearing.
  - 6) Truss to be fully sheathed from one face or securely braced against lateral movement (i.e. diagonal web).
  - 7) Gable studs spaced at 2-0-0 oc.
  - 8) This truss has been designed for a 10.0 psf bottom chord live load nonconcurrent with any other live loads.
  - 9) \* This truss has been designed for a live load of 23.0psf on the bottom chord in all areas where a rectangle 3-6-0 tall by 2-0-0 wide will fit between the bottom chord and any other members.
  - 10) Provide mechanical connection (by others) of truss to bearing plate capable of withstanding 100 lb uplift at joint(s) 4, 5 except (jt=lb) 6=235, 3=147.
  - 11) This truss has been designed for a total drag load of 250 plf. Lumber DOL=(1.60) Plate grip DOL=(1.60) Connect truss to resist drag loads along bottom chord from 0-0-0 to 1-10-8 for 250.0 plf.
  - 12) All dimensions given in feet-inches-sixteenths (FFIIS) format.

**LOAD CASE(S)** Standard



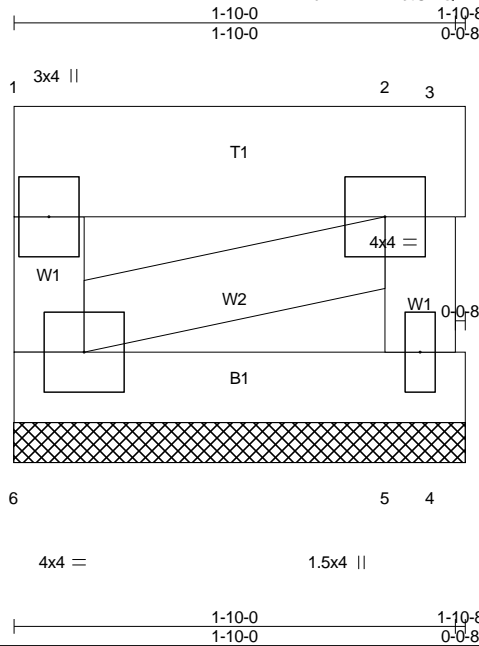
2/03/25

**WARNING - Verify design parameters and READ NOTES ON THIS AND INCLUDED MITEK REFERENCE PAGE MI-7473 BEFORE USE.**  
Design valid for use only with MiTek connectors. This design is based only upon parameters shown, and is for an individual building component. Applicability of design parameters and proper incorporation of component is responsibility of building designer - not truss designer. Bracing shown is for lateral support of individual web members only. Additional temporary bracing to insure stability during construction is the responsibility of the erector. Additional permanent bracing of the overall structure is the responsibility of the building designer. For general guidance regarding fabrication, quality control, storage, delivery, erection and bracing, consult ANSI/TPI1 Quality Criteria, DSB-89 and BCS11 Building Component Safety Information available from Truss Plate Institute, 2670 Crain Highway, Suite 203 Waldorf, MD 20601



The Truss Company and Building Supply LLC, Sumner, WA

Run: 8.810 s Sep 13 2024 Print: 8.830 s Jan 17 2025 MiTek Industries, Inc. Mon Feb 3 16:36:26 2025 Page 1  
ID:dLKfzmfhDbtOHQx1xmjsBkznYsv-HaAAUVJ\_shgJE\_e3LxojzoLnYlUngBkOSkvyF\_zomFp



Scale = 1:9.6

**BEVEL - VENT - SCREEN  
MATCH 2X4**

|   |   |   |  |               |             |
|---|---|---|--|---------------|-------------|
| <b>LOADING (psf)</b>  | <b>SPACING-</b>   | <b>CSI.</b>                               | <b>DEFL.</b>   | <b>PLATES</b> | <b>GRIP</b> |
| TCLL 25.0<br>(Roof Snow=25.0)<br>TCDL 8.0<br>BCLL 0.0 *<br>BCDL 7.0 | 2-0-0<br>Plate Grip DOL 1.15<br>Lumber DOL 1.15<br>Rep Stress Incr NO<br>Code IBC2021/TPI2014 | TC 0.02<br>BC 0.06<br>WB 0.11<br>Matrix-P | in (loc) l/defl L/d<br>Vert(LL) 0.00 2 n/r 120<br>Vert(CT) 0.00 2 n/r 90<br>Horz(CT) -0.00 5 n/a n/a | MT20          | 185/148     |
|   |   |   |  | Weight: 10 lb | FT = 20%    |

**LUMBER-**  
TOP CHORD 2x6 DF SS  
BOT CHORD 2x4 HF-N No. 1/No.2  
WEBS 2x4 DF Stud

**BRACING-**  
TOP CHORD Structural wood sheathing directly applied or 1-10-8 oc purlins, except end verticals.  
BOT CHORD Rigid ceiling directly applied or 6-0-0 oc bracing.

MiTek recommends that Stabilizers and required cross bracing be installed during truss erection, in accordance with Stabilizer Installation guide.

**REACTIONS.** (lb/size) 6=61/1-10-8 (min. 0-1-8), 5=78/1-10-8 (min. 0-1-8)  
Max Horz 6=-64(LC 34)  
Max Uplift 6=-244(LC 29), 5=-246(LC 32)  
Max Grav 6=257(LC 50), 5=263(LC 49)

**FORCES.** (lb) - Max. Comp./Max. Ten. - All forces 250 (lb) or less except when shown.  
TOP CHORD 1-2=-355/353  
BOT CHORD 5-6=-394/394  
WEBS 2-5=-250/254, 2-6=-459/461

- NOTES-** (12)
- 1) Wind: ASCE 7-16; Vult=110mph (3-second gust) Vasd=87mph; TCCL=4.8psf; BCDL=4.2psf; h=25ft; Cat. II; Exp B; Enclosed; MWFRS (envelope) gable end zone and C-C Corner(3) zone; cantilever left and right exposed ; end vertical left and right exposed;C-C for members and forces & MWFRS for reactions shown; Lumber DOL=1.60 plate grip DOL=1.60
  - 2) Truss designed for wind loads in the plane of the truss only. For studs exposed to wind (normal to the face), see Standard Industry Gable End Details as applicable, or consult qualified building designer as per ANSI/TPI 1.
  - 3) TCLL: ASCE 7-16; Pf=25.0 psf (Lum DOL = 1.15 Plate DOL = 1.15); Is=1.0; Rough Cat B; Partially Exp.; Ce=1.0; Cs=1.00; Ct=1.10
  - 4) Provide adequate drainage to prevent water ponding.
  - 5) Gable requires continuous bottom chord bearing.
  - 6) Truss to be fully sheathed from one face or securely braced against lateral movement (i.e. diagonal web).
  - 7) Gable studs spaced at 2-0-0 oc.
  - 8) This truss has been designed for a 10.0 psf bottom chord live load nonconcurrent with any other live loads.
  - 9) \* This truss has been designed for a live load of 23.0psf on the bottom chord in all areas where a rectangle 3-6-0 tall by 2-0-0 wide will fit between the bottom chord and any other members.
  - 10) Provide mechanical connection (by others) of truss to bearing plate capable of withstanding 100 lb uplift at joint(s) except (jt=lb) 6=244, 5=246.
  - 11) This truss has been designed for a total drag load of 250 plf. Lumber DOL=(1.60) Plate grip DOL=(1.60) Connect truss to resist drag loads along bottom chord from 0-0-0 to 1-10-8 for 250.0 plf.
  - 12) All dimensions given in feet-inches-sixteenths (FFIIS) format.

**LOAD CASE(S)** Standard



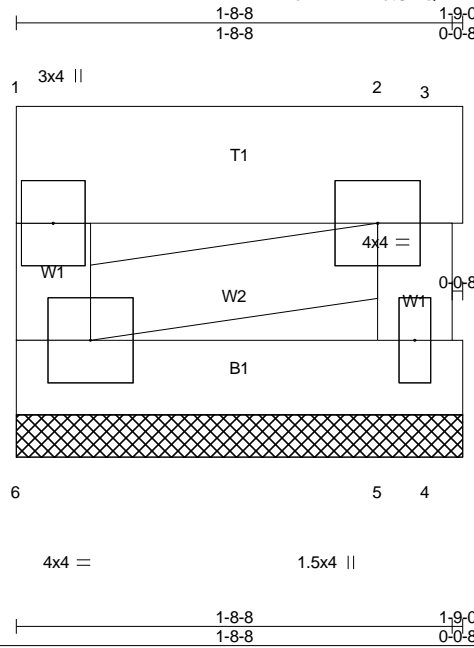
2/03/25

**WARNING - Verify design parameters and READ NOTES ON THIS AND INCLUDED MITTEK REFERENCE PAGE MI-7473 BEFORE USE.**  
Design valid for use only with MiTek connectors. This design is based only upon parameters shown, and is for an individual building component. Applicability of design parameters and proper incorporation of component is responsibility of building designer - not truss designer. Bracing shown is for lateral support of individual web members only. Additional temporary bracing to insure stability during construction is the responsibility of the erector. Additional permanent bracing of the overall structure is the responsibility of the building designer. For general guidance regarding fabrication, quality control, storage, delivery, erection and bracing, consult ANSI/TPI1 Quality Criteria, DSB-89 and BCS11 Building Component Safety Information available from Truss Plate Institute, 2670 Crain Highway, Suite 203 Waldorf, MD 20601



The Truss Company and Building Supply LLC, Sumner, WA

Run: 8.810 s Sep 13 2024 Print: 8.830 s Jan 17 2025 MiTek Industries, Inc. Mon Feb 3 16:36:27 2025 Page 1  
ID:dLKfzmfhDbtOHQx1xmjsBkznYsv-mmkyHqKcc\_oas8DGveJyW?uy8iq5PevXhOfvNqzomFo



Scale = 1:9.0

**BEVEL - VENT - SCREEN  
MATCH 2X4**

|   |   |   |   |                       |             |
|---|---|---|---|-----------------------|-------------|
| <b>LOADING (psf)</b>  | <b>SPACING-</b>   | <b>CSI.</b>                               | <b>DEFL.</b>  | <b>PLATES</b>         | <b>GRIP</b> |
| TCLL 25.0<br>(Roof Snow=25.0)<br>TCDL 8.0<br>BCLL 0.0 *<br>BCDL 7.0 | 2-0-0<br>Plate Grip DOL 1.15<br>Lumber DOL 1.15<br>Rep Stress Incr NO<br>Code IBC2021/TPI2014 | TC 0.03<br>BC 0.05<br>WB 0.11<br>Matrix-P | in (loc) l/defl L/d<br>Vert(LL) n/a - n/a 999<br>Vert(CT) n/a - n/a 999<br>Horz(CT) -0.00 3 n/a n/a | MT20                  | 185/148     |
|   |   |   |   | Weight: 9 lb FT = 20% |             |

**LUMBER-**  
TOP CHORD 2x6 DF SS  
BOT CHORD 2x4 HF-N No. 1/No.2  
WEBS 2x4 DF Stud

**BRACING-**  
TOP CHORD Structural wood sheathing directly applied or 1-9-0 oc purlins, except end verticals.  
BOT CHORD Rigid ceiling directly applied or 6-0-0 oc bracing.

MiTek recommends that Stabilizers and required cross bracing be installed during truss erection, in accordance with Stabilizer Installation guide.

**REACTIONS.** (lb/size) 6=55/1-9-0 (min. 0-1-8), 3=10/1-9-0 (min. 0-1-8), 4=-15/1-9-0 (min. 0-1-8), 5=79/1-9-0 (min. 0-1-8)  
Max Horz 6=-15(LC 9)  
Max Uplift 6=-227(LC 29), 3=-145(LC 32), 4=-37(LC 4), 5=-73(LC 32)  
Max Grav 6=237(LC 50), 3=143(LC 49), 5=128(LC 25)

**FORCES.** (lb) - Max. Comp./Max. Ten. - All forces 250 (lb) or less except when shown.  
TOP CHORD 1-2=-362/360  
BOT CHORD 5-6=-366/366  
WEBS 2-6=-472/474

- NOTES-** (12)
- 1) Wind: ASCE 7-16; Vult=110mph (3-second gust) Vasd=87mph; TCCL=4.8psf; BCDL=4.2psf; h=25ft; Cat. II; Exp B; Enclosed; MWFRS (envelope) gable end zone and C-C Corner(3) zone; cantilever left and right exposed; end vertical left and right exposed; C-C for members and forces & MWFRS for reactions shown; Lumber DOL=1.60 plate grip DOL=1.60
  - 2) Truss designed for wind loads in the plane of the truss only. For studs exposed to wind (normal to the face), see Standard Industry Gable End Details as applicable, or consult qualified building designer as per ANSI/TPI 1.
  - 3) TCLL: ASCE 7-16; Pf=25.0 psf (Lum DOL = 1.15 Plate DOL = 1.15); Is=1.0; Rough Cat B; Partially Exp.; Ce=1.0; Cs=1.00; Ct=1.10
  - 4) Provide adequate drainage to prevent water ponding.
  - 5) Gable requires continuous bottom chord bearing.
  - 6) Truss to be fully sheathed from one face or securely braced against lateral movement (i.e. diagonal web).
  - 7) Gable studs spaced at 2-0-0 oc.
  - 8) This truss has been designed for a 10.0 psf bottom chord live load nonconcurrent with any other live loads.
  - 9) \* This truss has been designed for a live load of 23.0psf on the bottom chord in all areas where a rectangle 3-6-0 tall by 2-0-0 wide will fit between the bottom chord and any other members.
  - 10) Provide mechanical connection (by others) of truss to bearing plate capable of withstanding 100 lb uplift at joint(s) 4, 5 except (jt=lb) 6=227, 3=145.
  - 11) This truss has been designed for a total drag load of 250 plf. Lumber DOL=(1.60) Plate grip DOL=(1.60) Connect truss to resist drag loads along bottom chord from 0-0-0 to 1-9-0 for 250.0 plf.
  - 12) All dimensions given in feet-inches-sixteenths (FFIIS) format.

**LOAD CASE(S)** Standard



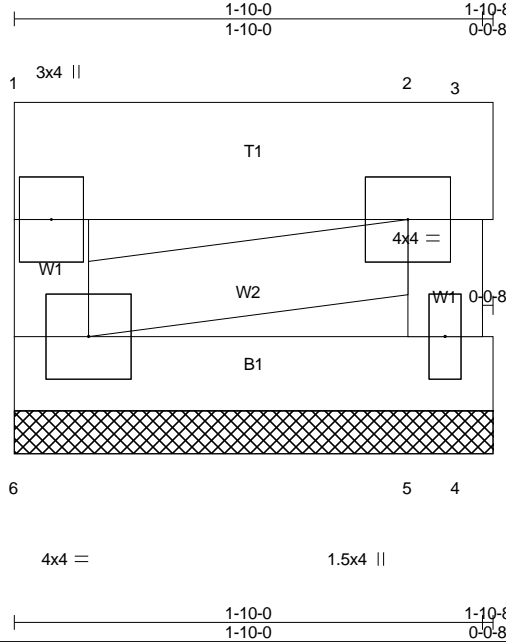
2/03/25

**WARNING - Verify design parameters and READ NOTES ON THIS AND INCLUDED MITEK REFERENCE PAGE MI-7473 BEFORE USE.**  
Design valid for use only with MiTek connectors. This design is based only upon parameters shown, and is for an individual building component. Applicability of design parameters and proper incorporation of component is responsibility of building designer - not truss designer. Bracing shown is for lateral support of individual web members only. Additional temporary bracing to insure stability during construction is the responsibility of the erector. Additional permanent bracing of the overall structure is the responsibility of the building designer. For general guidance regarding fabrication, quality control, storage, delivery, erection and bracing, consult ANSI/TPI1 Quality Criteria, DSB-89 and BCS11 Building Component Safety Information available from Truss Plate Institute, 2670 Crain Highway, Suite 203 Waldorf, MD 20601



The Truss Company and Building Supply LLC, Sumner, WA

Run: 8.810 s Sep 13 2024 Print: 8.830 s Jan 17 2025 MiTek Industries, Inc. Mon Feb 3 16:36:28 2025 Page 1  
ID:dLkFzmfhDbtOHQx1xmjsBkznYsv-EyHwvAKENlwRUloSSLqB3DQ7t5AG853hv2O3JtzomFh



Scale = 1:9.0

**BEVEL - VENT - SCREEN MATCH 2X4**

|                               |                      |             |                          |               |             |
|-------------------------------|----------------------|-------------|--------------------------|---------------|-------------|
| <b>LOADING (psf)</b>          | <b>SPACING-</b>      | <b>CSI.</b> | <b>DEFL.</b>             | <b>PLATES</b> | <b>GRIP</b> |
| TCLL 25.0<br>(Roof Snow=25.0) | 2-0-0                | TC 0.03     | in (loc) l/defl L/d      | MT20          | 185/148     |
| TCDL 8.0                      | Plate Grip DOL 1.15  | BC 0.06     | Vert(LL) n/a - n/a 999   |               |             |
| BCLL 0.0 *                    | Lumber DOL 1.15      | WB 0.12     | Vert(CT) n/a - n/a 999   |               |             |
| BCDL 7.0                      | Rep Stress Incr NO   | Matrix-P    | Horz(CT) -0.00 3 n/a n/a |               |             |
|                               | Code IBC2021/TPI2014 |             |                          | Weight: 9 lb  | FT = 20%    |

**LUMBER-**  
 TOP CHORD 2x6 DF SS  
 BOT CHORD 2x4 HF-N No. 1/No.2  
 WEBS 2x4 DF Stud

**BRACING-**  
 TOP CHORD Structural wood sheathing directly applied or 1-10-8 oc purlins, except end verticals.  
 BOT CHORD Rigid ceiling directly applied or 6-0-0 oc bracing.

MiTek recommends that Stabilizers and required cross bracing be installed during truss erection, in accordance with Stabilizer Installation guide.

**REACTIONS.** (lb/size) 6=59/1-10-8 (min. 0-1-8), 3=5/1-10-8 (min. 0-1-8), 4=-19/1-10-8 (min. 0-1-8), 5=93/1-10-8 (min. 0-1-8)  
 Max Horz 6=-15(LC 9)  
 Max Uplift 6=-227(LC 29), 3=-139(LC 32), 4=-45(LC 4), 5=-76(LC 32)  
 Max Grav 6=238(LC 50), 3=138(LC 33), 5=143(LC 25)

**FORCES.** (lb) - Max. Comp./Max. Ten. - All forces 250 (lb) or less except when shown.  
 TOP CHORD 1-2=-393/391  
 BOT CHORD 5-6=-394/394  
 WEBS 2-6=-498/500

- NOTES-** (12)
- 1) Wind: ASCE 7-16; Vult=110mph (3-second gust) Vasd=87mph; TC DL=4.8psf; BCDL=4.2psf; h=25ft; Cat. II; Exp B; Enclosed; MWFRS (envelope) gable end zone and C-C Corner(3) zone; cantilever left and right exposed; end vertical left and right exposed; C-C for members and forces & MWFRS for reactions shown; Lumber DOL=1.60 plate grip DOL=1.60
  - 2) Truss designed for wind loads in the plane of the truss only. For studs exposed to wind (normal to the face), see Standard Industry Gable End Details as applicable, or consult qualified building designer as per ANSI/TPI 1.
  - 3) TCLL: ASCE 7-16; Pf=25.0 psf (Lum DOL = 1.15 Plate DOL = 1.15); Is=1.0; Rough Cat B; Partially Exp.; Ce=1.0; Cs=1.00; Ct=1.10
  - 4) Provide adequate drainage to prevent water ponding.
  - 5) Gable requires continuous bottom chord bearing.
  - 6) Truss to be fully sheathed from one face or securely braced against lateral movement (i.e. diagonal web).
  - 7) Gable studs spaced at 2-0-0 oc.
  - 8) This truss has been designed for a 10.0 psf bottom chord live load nonconcurrent with any other live loads.
  - 9) \* This truss has been designed for a live load of 23.0psf on the bottom chord in all areas where a rectangle 3-6-0 tall by 2-0-0 wide will fit between the bottom chord and any other members.
  - 10) Provide mechanical connection (by others) of truss to bearing plate capable of withstanding 100 lb uplift at joint(s) 4, 5 except (jt=lb) 6=227, 3=139.
  - 11) This truss has been designed for a total drag load of 250 plf. Lumber DOL=(1.60) Plate grip DOL=(1.60) Connect truss to resist drag loads along bottom chord from 0-0-0 to 1-10-8 for 250.0 plf.
  - 12) All dimensions given in feet-inches-sixteenths (FFIIS) format.

**LOAD CASE(S)** Standard



2/03/25

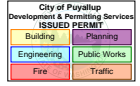
**WARNING - Verify design parameters and READ NOTES ON THIS AND INCLUDED MITEK REFERENCE PAGE MI-7473 BEFORE USE.**  
 Design valid for use only with MiTek connectors. This design is based only upon parameters shown, and is for an individual building component. Applicability of design parameters and proper incorporation of component is responsibility of building designer - not truss designer. Bracing shown is for lateral support of individual web members only. Additional temporary bracing to insure stability during construction is the responsibility of the erector. Additional permanent bracing of the overall structure is the responsibility of the building designer. For general guidance regarding fabrication, quality control, storage, delivery, erection and bracing, consult ANSI/TPI1 Quality Criteria, DSB-89 and BCS11 Building Component Safety Information available from Truss Plate Institute, 2670 Crain Highway, Suite 203 Waldorf, MD 20601



The Truss Company and Building Supply LLC, Sumner, WA

Run: 8.810 s Sep 13 2024 Print: 8.830 s Jan 17 2025 MiTek Industries, Inc. Mon Feb 3 16:36:29 2025 Page 1  
 ID:h4QDTpRjurTkdpQTHdwEGzmqYo-i9rl6WLT8c2l5SNe03LQbQz74VWUitSMq8i8csJzomFm

1-10-0 1-10-8  
 1-10-0 0-0-8



Scale = 1:41.0

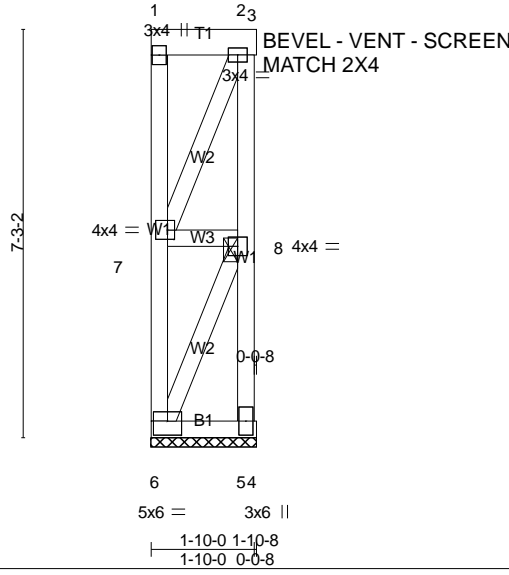


Plate Offsets (X,Y)-- [6:0-3-0,0-3-0], [7:0-1-8,0-2-0]

|                               |                      |             |                           |               |             |
|-------------------------------|----------------------|-------------|---------------------------|---------------|-------------|
| <b>LOADING</b> (psf)          | <b>SPACING-</b>      | <b>CSI.</b> | <b>DEFL.</b>              | <b>PLATES</b> | <b>GRIP</b> |
| TCLL 25.0<br>(Roof Snow=25.0) | 2-0-0                | TC 0.71     | in (loc) l/defl L/d       | MT20          | 185/148     |
| TCDL 8.0                      | Plate Grip DOL 1.15  | BC 0.06     | Vert(LL) 0.00 2-3 n/r 120 |               |             |
| BCLL 0.0 *                    | Lumber DOL 1.15      | WB 0.50     | Vert(CT) 0.00 2-3 n/r 90  |               |             |
| BCDL 7.0                      | Rep Stress Incr NO   | Matrix-P    | Horz(CT) 0.00 5 n/a n/a   |               |             |
|                               | Code IBC2021/TPI2014 |             |                           | Weight: 35 lb | FT = 20%    |

**LUMBER-**  
 TOP CHORD 2x6 DF SS  
 BOT CHORD 2x4 HF-N No.1/No.2  
 WEBS 2x4 DF Stud

**BRACING-**  
 TOP CHORD Structural wood sheathing directly applied or 1-10-8 oc purlins, except end verticals.  
 BOT CHORD Rigid ceiling directly applied or 6-0-0 oc bracing.  
 JOINTS 1 Brace at Jt(s): 8

MiTek recommends that Stabilizers and required cross bracing be installed during truss erection, in accordance with Stabilizer Installation guide.

**REACTIONS.** (lb/size) 6=61/1-10-8 (min. 0-1-8), 5=78/1-10-8 (min. 0-1-8)  
 Max Horz 6=-173(LC 34)  
 Max Uplift 6=-1994(LC 33), 5=-1942(LC 32)  
 Max Grav 6=1928(LC 32), 5=2015(LC 33)

**FORCES.** (lb) - Max. Comp./Max. Ten. - All forces 250 (lb) or less except when shown.  
 TOP CHORD 6-7=-885/913, 1-2=-368/362  
 BOT CHORD 5-6=-397/397  
 WEBS 5-8=-2001/1950, 2-8=-910/913, 7-8=-488/463, 2-7=-982/996, 6-8=-1138/1198

- NOTES-** (12)
- 1) Wind: ASCE 7-16; Vult=110mph (3-second gust) Vasd=87mph; TCDL=4.8psf; BCCL=4.2psf; h=25ft; Cat. II; Exp B; Enclosed; MWFRS (envelope) gable end zone and C-C Corner(3) zone; cantilever left and right exposed ; end vertical left and right exposed; C-C for members and forces & MWFRS for reactions shown; Lumber DOL=1.60 plate grip DOL=1.60
  - 2) Truss designed for wind loads in the plane of the truss only. For studs exposed to wind (normal to the face), see Standard Industry Gable End Details as applicable, or consult qualified building designer as per ANSI/TPI 1.
  - 3) TCLL: ASCE 7-16; Pf=25.0 psf (Lum DOL = 1.15 Plate DOL = 1.15); Is=1.0; Rough Cat B; Partially Exp.; Ce=1.0; Cs=1.00; Ct=1.10
  - 4) Provide adequate drainage to prevent water ponding.
  - 5) Gable requires continuous bottom chord bearing.
  - 6) Truss to be fully sheathed from one face or securely braced against lateral movement (i.e. diagonal web).
  - 7) Gable studs spaced at 2-0-0 oc.
  - 8) This truss has been designed for a 10.0 psf bottom chord live load nonconcurrent with any other live loads.
  - 9) \* This truss has been designed for a live load of 23.0psf on the bottom chord in all areas where a rectangle 3-6-0 tall by 2-0-0 wide will fit between the bottom chord and any other members.
  - 10) Provide mechanical connection (by others) of truss to bearing plate capable of withstanding 100 lb uplift at joint(s) except (jt=lb) 6=1994, 5=1942.
  - 11) This truss has been designed for a total drag load of 250 plf. Lumber DOL=(1.60) Plate grip DOL=(1.60) Connect truss to resist drag loads along bottom chord from 0-0-0 to 1-10-8 for 250.0 plf.
  - 12) All dimensions given in feet-inches-sixteenths (FFIISS) format.

**LOAD CASE(S)** Standard



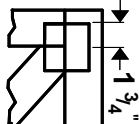
2/03/25

**WARNING - Verify design parameters and READ NOTES ON THIS AND INCLUDED MITEK REFERENCE PAGE MI-7473 BEFORE USE.**  
 Design valid for use only with MiTek connectors. This design is based only upon parameters shown, and is for an individual building component. Applicability of design parameters and proper incorporation of component is responsibility of building designer - not truss designer. Bracing shown is for lateral support of individual web members only. Additional temporary bracing to insure stability during construction is the responsibility of the erector. Additional permanent bracing of the overall structure is the responsibility of the building designer. For general guidance regarding fabrication, quality control, storage, delivery, erection and bracing, consult ANSI/TPI1 Quality Criteria, DSB-89 and BCS11 Building Component Safety Information available from Truss Plate Institute, 2670 Crain Highway, Suite 203 Waldorf, MD 20601

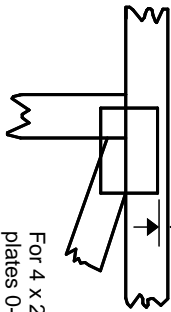


# Symbols

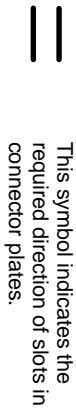
## PLATE LOCATION AND ORIENTATION



Center plate on joint unless x, y offsets are indicated. Dimensions are in ft-in-sixteenths. Apply plates to both sides of truss and fully embed teeth.



For 4 x 2 orientation, locate plates 0- 1/16" from outside edge of truss.



\* Plate location details available in **MITek 20/20 software or upon request.**

## PLATE SIZE

4 X 4

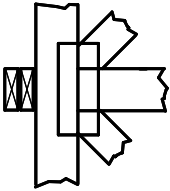
The first dimension is the plate width measured perpendicular to slots. Second dimension is the length parallel to slots.

## LATERAL BRACING LOCATION



Indicated by symbol shown and/or by text in the bracing section of the output. Use T or I bracing if indicated.

## BEARING

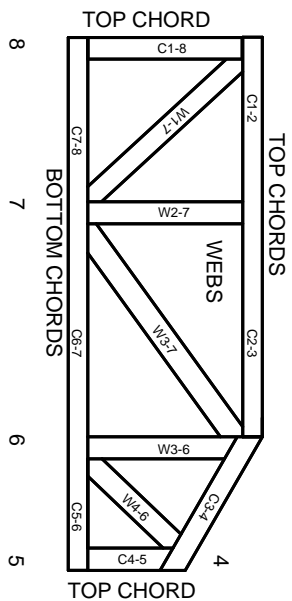


Indicates location where bearings (supports) occur. Icons vary but reaction section indicates joint number where bearings occur. Min size shown is for crushing only.

## Industry Standards:

ANSI/TPI 1: National Design Specification for Metal Plate Connected Wood Truss Construction.  
DSB-89: Design Standard for Bracing, Building Component Safety Information, Guide to Good Practice for Handling, Installing & Bracing of Metal Plate Connected Wood Trusses.

# Numbering System



**JOINTS ARE GENERALLY NUMBERED/LETTERED CLOCKWISE AROUND THE TRUSS STARTING AT THE JOINT FARTHEST TO THE LEFT.**

**CHORDS AND WEBS ARE IDENTIFIED BY END JOINT NUMBERS/LETTERS.**

## PRODUCT CODE APPROVALS

ICC-ES Reports:

ESR-1311, ESR-1352, ESR1988  
ER-3907, ESR-2362, ESR-1397, ESR-3282

Trusses are designed for wind loads in the plane of the truss unless otherwise shown.

Lumber design values are in accordance with ANSI/TPI 1 section 6.3 These truss designs rely on lumber values established by others.

© 2012 MITteK® All Rights Reserved

# General Safety Notes

## Failure to Follow Could Cause Property Damage or Personal Injury

1. Additional stability/bracing for truss system, e.g. diagonal or X-bracing, is always required. See BCSI.
2. Truss bracing must be designed by an engineer. For wide truss spacing, individual lateral braces themselves may require bracing, or alternative T or I bracing should be considered.
3. Never exceed the design loading shown and never stack materials on inadequately braced trusses.
4. Provide copies of this truss design to the building designer, erection supervisor, property owner and all other interested parties.
5. Cut members to bear tightly against each other.
6. Place plates on each face of truss at each joint and embed fully. Knots and wane at joint locations are regulated by ANSI/TPI 1.
7. Design assumes trusses will be suitably protected from the environment in accord with ANSI/TPI 1.
8. Unless otherwise noted, moisture content of lumber shall not exceed 19% at time of fabrication.
9. Unless expressly noted, this design is not applicable for use with fire retardant, preservative treated, or green lumber.
10. Camber is a non-structural consideration and is the responsibility of truss fabricator. General practice is to camber for dead load deflection.
11. Plate type, size, orientation and location dimensions indicated are minimum plating requirements.
12. Lumber used shall be of the species and size, and in all respects, equal to or better than that specified.
13. Top chords must be sheathed or purlins provided at spacing indicated on design.
14. Bottom chords require lateral bracing at 10 ft. spacing, or less, if no ceiling is installed, unless otherwise noted.
15. Connections not shown are the responsibility of others.
16. Do not cut or alter truss member or plate without prior approval of an engineer.
17. Install and load vertically unless indicated otherwise.
18. Use of green or treated lumber may pose unacceptable environmental, health or performance risks. Consult with project engineer before use.
19. Review all portions of this design (front, back, words and pictures) before use. Reviewing pictures alone is not sufficient.
20. Design assumes manufacture in accordance with ANSI/TPI 1 Quality Criteria.
21. The design does not take into account any dynamic or other loads other than those expressly stated.



MITteK Engineering Reference Sheet: Mill-7473 rev. 5/19/2020