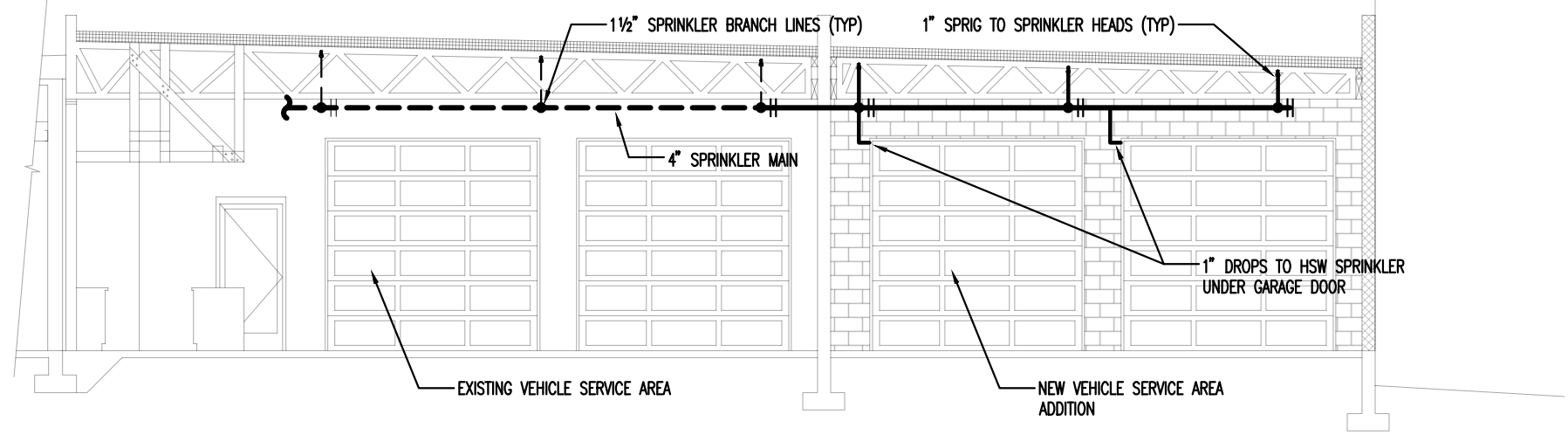
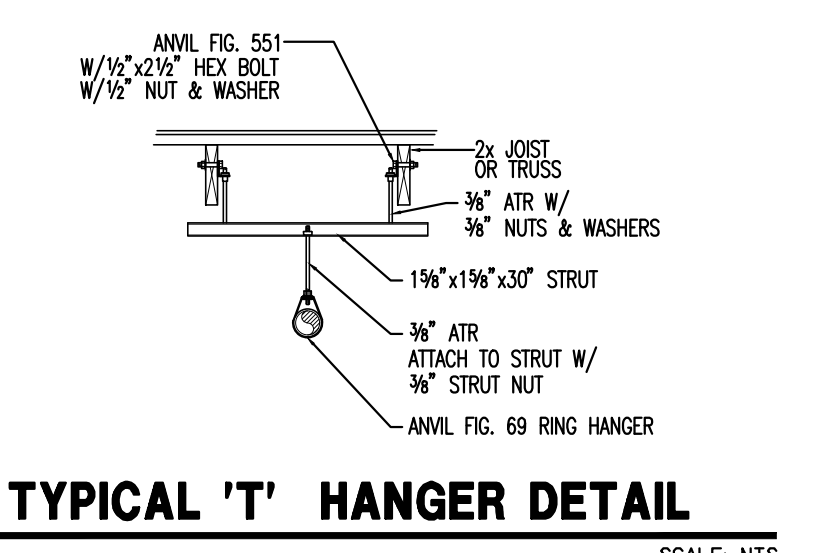
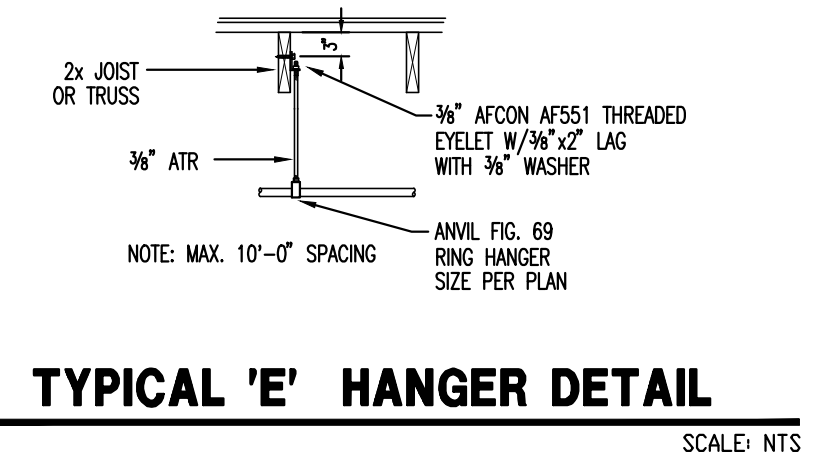
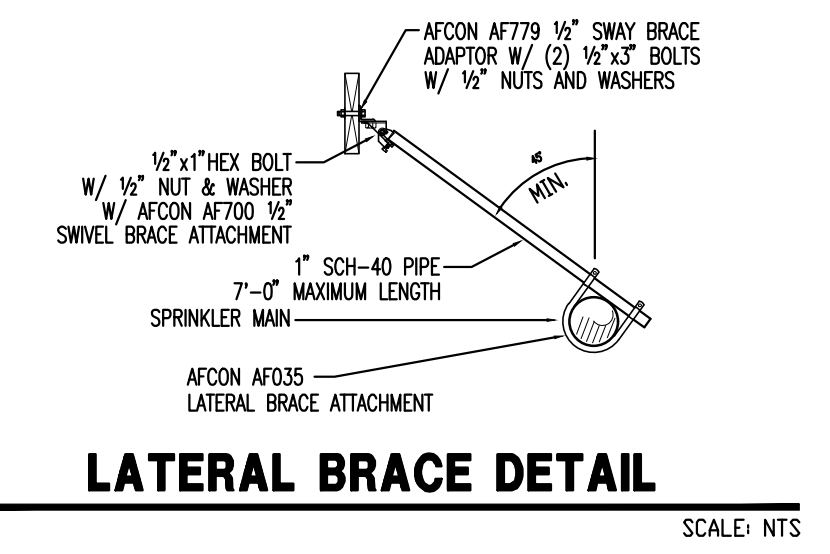
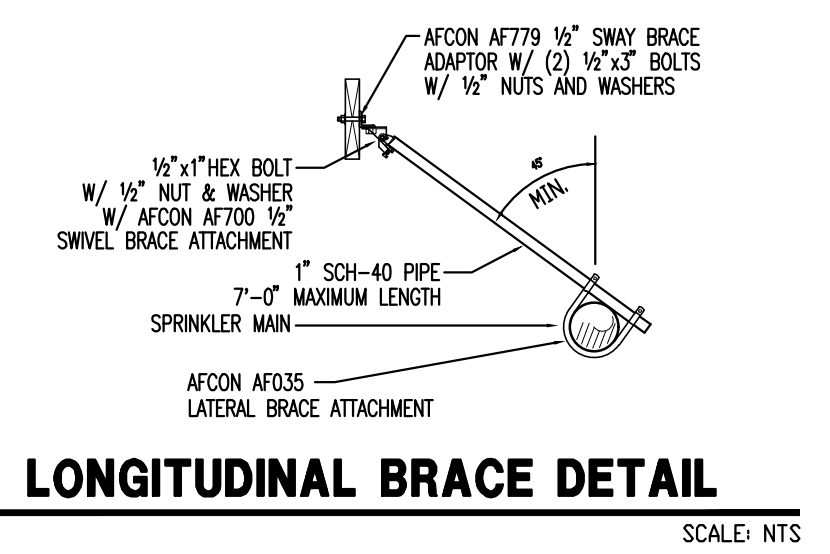


SERVICE ADDITION SPRINKLER PLAN
SCALE: 1/8"=1'-0"



A: SPRINKLER SECTION VIEW
SCALE: 1/8"=1'-0"



SCOPE OF WORK

TENANT IMPROVEMENT-MODIFY EXISTING SPRINKLER SYSTEM FOR NEW TENANT IMPROVEMENT ADDITION. ADDITION DESIGNED AND CALCULATED TO ORDINARY HAZARD GROUP 2, PROVIDING 0.2 GPM/SQFT DENSITY OVER A MAXIMUM COVERAGE AREA OF 130 SQFT PER SPRINKLER. FLEXIBLE COUPLINGS TO BE USED ON BOTH SIDES OF EXISTING WALL PENETRATION. NEW SWAY BRACING TO MATCH EXISTING BRACING SPACING AND FASTENERS.

NOTE - DIAGONAL CROSS HATCHING INDICATES EXISTING BUILDING AREA NOT IN PROJECT SCOPE.

GENERAL NOTES

- DENOTES EXISTING FIRE SPRINKLER PIPING.
- DENOTES NEW FIRE SPRINKLER PIPING.
- ⊙ DENOTES EXISTING FIRE SPRINKLER PENDENT TO REMAIN.
- DENOTES EXISTING FIRE SPRINKLER UPRIGHT TO REMAIN.
- <3 DENOTES EXISTING SIDEWALL FIRE SPRINKLER TO REMAIN.
- SEE HANGER DETAILS FOR TYPICAL HANGERS.

HANGER LEGEND

A	"U" HOOK
B	COACH SCREW ROD
D	BM. CLAMP W/ "STRAP
E	EYELET
F	FLUSH SHELL
G	CEILING FLANGE
H	SIDE BEAM BRACKET
K	SHORT CLIP
M	ALL THREAD ROD
N	TOGGLE NUT
P	POWDER DRIVEN STUD
R	EXPANSION BOLT
S	PIPE SPIKE
T	TRUSS EYELET
U	
V	
W	
X	
Y	
Z	

SPRINKLER LEGEND

SPRINKLER	ORIFICE SIZES AND TYPE	UPRIGHT	PENDENT	TEMP. RATING	SYMBOL	TEMP. RATING
1	5 3/8 3/4 1/2" SPRAY	○	○	165°	○	165°
2	5 3/8 3/4 1/2" SPRAY	○	○	212°	○	212°
3	5 3/8 3/4 1/2" SPRAY	○	○	286°	○	286°
4	5 3/8 3/4 1/2" SPRAY	○	○	350°	○	350°
5	5 3/8 3/4 1/2" SPRAY	○	○	500°	○	500°
6	5 3/8 3/4 1/2" SPRAY	○	○	500°	○	500°
7	5 3/8 3/4 1/2" SPRAY	○	○	500°	○	500°
8	5 3/8 3/4 1/2" SPRAY	○	○	500°	○	500°
9	5 3/8 3/4 1/2" SPRAY	○	○	500°	○	500°
10	5 3/8 3/4 1/2" SPRAY	○	○	500°	○	500°
11	5 3/8 3/4 1/2" SPRAY	○	○	500°	○	500°
12	5 3/8 3/4 1/2" SPRAY	○	○	500°	○	500°
13	5 3/8 3/4 1/2" SPRAY	○	○	500°	○	500°
14	5 3/8 3/4 1/2" SPRAY	○	○	500°	○	500°
15	5 3/8 3/4 1/2" SPRAY	○	○	500°	○	500°
16	5 3/8 3/4 1/2" SPRAY	○	○	500°	○	500°
17	5 3/8 3/4 1/2" SPRAY	○	○	500°	○	500°
18	5 3/8 3/4 1/2" SPRAY	○	○	500°	○	500°
19	5 3/8 3/4 1/2" SPRAY	○	○	500°	○	500°
20	5 3/8 3/4 1/2" SPRAY	○	○	500°	○	500°
21	5 3/8 3/4 1/2" SPRAY	○	○	500°	○	500°
22	5 3/8 3/4 1/2" SPRAY	○	○	500°	○	500°
23	5 3/8 3/4 1/2" SPRAY	○	○	500°	○	500°
24	5 3/8 3/4 1/2" SPRAY	○	○	500°	○	500°
25	5 3/8 3/4 1/2" SPRAY	○	○	500°	○	500°
26	5 3/8 3/4 1/2" SPRAY	○	○	500°	○	500°
27	5 3/8 3/4 1/2" SPRAY	○	○	500°	○	500°
28	5 3/8 3/4 1/2" SPRAY	○	○	500°	○	500°
29	5 3/8 3/4 1/2" SPRAY	○	○	500°	○	500°
30	5 3/8 3/4 1/2" SPRAY	○	○	500°	○	500°
31	5 3/8 3/4 1/2" SPRAY	○	○	500°	○	500°
32	5 3/8 3/4 1/2" SPRAY	○	○	500°	○	500°
33	5 3/8 3/4 1/2" SPRAY	○	○	500°	○	500°
34	5 3/8 3/4 1/2" SPRAY	○	○	500°	○	500°
35	5 3/8 3/4 1/2" SPRAY	○	○	500°	○	500°
36	5 3/8 3/4 1/2" SPRAY	○	○	500°	○	500°
37	5 3/8 3/4 1/2" SPRAY	○	○	500°	○	500°
38	5 3/8 3/4 1/2" SPRAY	○	○	500°	○	500°
39	5 3/8 3/4 1/2" SPRAY	○	○	500°	○	500°
40	5 3/8 3/4 1/2" SPRAY	○	○	500°	○	500°
41	5 3/8 3/4 1/2" SPRAY	○	○	500°	○	500°
42	5 3/8 3/4 1/2" SPRAY	○	○	500°	○	500°
43	5 3/8 3/4 1/2" SPRAY	○	○	500°	○	500°
44	5 3/8 3/4 1/2" SPRAY	○	○	500°	○	500°
45	5 3/8 3/4 1/2" SPRAY	○	○	500°	○	500°
46	5 3/8 3/4 1/2" SPRAY	○	○	500°	○	500°
47	5 3/8 3/4 1/2" SPRAY	○	○	500°	○	500°
48	5 3/8 3/4 1/2" SPRAY	○	○	500°	○	500°
49	5 3/8 3/4 1/2" SPRAY	○	○	500°	○	500°
50	5 3/8 3/4 1/2" SPRAY	○	○	500°	○	500°
51	5 3/8 3/4 1/2" SPRAY	○	○	500°	○	500°
52	5 3/8 3/4 1/2" SPRAY	○	○	500°	○	500°
53	5 3/8 3/4 1/2" SPRAY	○	○	500°	○	500°
54	5 3/8 3/4 1/2" SPRAY	○	○	500°	○	500°
55	5 3/8 3/4 1/2" SPRAY	○	○	500°	○	500°
56	5 3/8 3/4 1/2" SPRAY	○	○	500°	○	500°
57	5 3/8 3/4 1/2" SPRAY	○	○	500°	○	500°
58	5 3/8 3/4 1/2" SPRAY	○	○	500°	○	500°
59	5 3/8 3/4 1/2" SPRAY	○	○	500°	○	500°
60	5 3/8 3/4 1/2" SPRAY	○	○	500°	○	500°
61	5 3/8 3/4 1/2" SPRAY	○	○	500°	○	500°
62	5 3/8 3/4 1/2" SPRAY	○	○	500°	○	500°
63	5 3/8 3/4 1/2" SPRAY	○	○	500°	○	500°
64	5 3/8 3/4 1/2" SPRAY	○	○	500°	○	500°
65	5 3/8 3/4 1/2" SPRAY	○	○	500°	○	500°
66	5 3/8 3/4 1/2" SPRAY	○	○	500°	○	500°
67	5 3/8 3/4 1/2" SPRAY	○	○	500°	○	500°
68	5 3/8 3/4 1/2" SPRAY	○	○	500°	○	500°
69	5 3/8 3/4 1/2" SPRAY	○	○	500°	○	500°
70	5 3/8 3/4 1/2" SPRAY	○	○	500°	○	500°
71	5 3/8 3/4 1/2" SPRAY	○	○	500°	○	500°
72	5 3/8 3/4 1/2" SPRAY	○	○	500°	○	500°
73	5 3/8 3/4 1/2" SPRAY	○	○	500°	○	500°
74	5 3/8 3/4 1/2" SPRAY	○	○	500°	○	500°
75	5 3/8 3/4 1/2" SPRAY	○	○	500°	○	500°
76	5 3/8 3/4 1/2" SPRAY	○	○	500°	○	500°
77	5 3/8 3/4 1/2" SPRAY	○	○	500°	○	500°
78	5 3/8 3/4 1/2" SPRAY	○	○	500°	○	500°
79	5 3/8 3/4 1/2" SPRAY	○	○	500°	○	500°
80	5 3/8 3/4 1/2" SPRAY	○	○	500°	○	500°
81	5 3/8 3/4 1/2" SPRAY	○	○	500°	○	500°
82	5 3/8 3/4 1/2" SPRAY	○	○	500°	○	500°
83	5 3/8 3/4 1/2" SPRAY	○	○	500°	○	500°
84	5 3/8 3/4 1/2" SPRAY	○	○	500°	○	500°
85	5 3/8 3/4 1/2" SPRAY	○	○	500°	○	500°
86	5 3/8 3/4 1/2" SPRAY	○	○	500°	○	500°
87	5 3/8 3/4 1/2" SPRAY	○	○	500°	○	500°
88	5 3/8 3/4 1/2" SPRAY	○	○	500°	○	500°
89	5 3/8 3/4 1/2" SPRAY	○	○	500°	○	500°
90	5 3/8 3/4 1/2" SPRAY	○	○	500°	○	500°
91	5 3/8 3/4 1/2" SPRAY	○	○	500°	○	500°
92	5 3/8 3/4 1/2" SPRAY	○	○	500°	○	500°
93	5 3/8 3/4 1/2" SPRAY	○	○	500°	○	500°
94	5 3/8 3/4 1/2" SPRAY	○	○	500°	○	500°
95	5 3/8 3/4 1/2" SPRAY	○	○	500°	○	500°
96	5 3/8 3/4 1/2" SPRAY	○	○	500°	○	500°
97	5 3/8 3/4 1/2" SPRAY	○	○	500°	○	500°
98	5 3/8 3/4 1/2" SPRAY	○	○	500°	○	500°
99	5 3/8 3/4 1/2" SPRAY	○	○	500°	○	500°
100	5 3/8 3/4 1/2" SPRAY	○	○	500°	○	500°

STATE CERTIFICATION

WASHINGTON STATE
 CERTIFICATE OF COMPETENCY
 FIRE SPRINKLER SYSTEMS
 Matthew Greene
 9919-0311-C Level 3
 Patriot Fire Protection, Inc.
 7/7/2025

TEMP RATING

○	165°	○	165°
○	212°	○	212°
○	286°	○	286°
○	350°	○	350°
○	500°	○	500°

APPROVAL REQUIRED
CITY OF PUYALLUP

SPRINKLER HEADS USED

SYM	MANUF	MODEL	TYPE	THREAD SIZE	ORIFICE SIZE	HEAD ESCUTCH FINISH	TEMP	QTY	
⊙	RELIABLE	FHR-56	QR UPRIGHT	1/2"	5.6K	BRONZE	N/A	2007	15
⊙	RELIABLE	FHR-56	QR HSW	1/2"	5.6K	BRONZE	N/A	2007	4
								TOTAL	19

QUALITY CONTROL BY: MATT GREENE DATE: 7/7/25
 APPROVED FOR FABRICATION BY: DATE:

- GENERAL NOTES**
- ALL MATERIAL AND EQUIPMENT TO BE NEW AND UL LISTED OR FM APPROVED.
 - PIPING DIMENSIONS ARE CENTER TO CENTER EXCEPT RISERS AND DIMENSIONS SHOWN TRUSSEY (I-E) WHICH ARE END TO END.
 - EARTHQUAKE BRACING SHALL BE PROVIDED IN ACCORDANCE WITH NFPA PAMPHLET NO. 13, APPLICABLE EDITION.
 - PIPE HANGERS AND METHOD OF HANGING TO BE IN ACCORDANCE WITH NFPA PAMPHLET NO. 13, APPLICABLE EDITION.
 - PIPING SHALL BE IN ACCORDANCE WITH NFPA PAMPHLET NO. 13, APPLICABLE EDITION.
 - JOINING OF PIPE AND FITTINGS, THREADED & WELDED, SHALL BE IN ACCORDANCE WITH NFPA PAMPHLET NO. 13, APPLICABLE EDITION.
 - OWNER TO PROVIDE ADEQUATE HEAT IN AREAS PROTECTED BY A WET PIPE SPRINKLER SYSTEM TO PREVENT WATER IN PIPES FROM FREEZING.
 - ALL WIRING OF ELECTRICAL DEVICES (IF REQUIRED) TO BE PROVIDED BY OTHERS.
 - PAINTING OF PIPE & EQUIPMENT (IF REQUIRED) TO BE PROVIDED BY OTHERS.
 - FLUORING OF PIPE & EQUIPMENT (IF REQUIRED) TO BE PROVIDED BY OTHERS.

- DESIGN CRITERIA**
- DESIGN PER NFPA 13 2019 EDITION
 -ORDINARY HAZARD GROUP 2 (0.2 GPM/SQFT)
 -130 SQFT MAX SPRINKLER COVERAGE
 -7 PSI MINIMUM END HEAD PRESSURE

- PIPE NOTES**
- ALL NEW THREADED PIPE TO BE SCH 40 - BLACK.
 - ALL NEW WELDED PIPE TO BE SCH 10 - BLACK.

REVISIONS

NO	DATE	BY	DESCRIPTION

CONTRACT WITH:
ACCRET CONSTRUCTION
 801 VALLEY AVE NW SUITE A
 PUYALLUP, WA 98371

PROJECT NAME:
PUYALLUP MAZDA
 SERVICE ADDITION
 608 RIVER ROAD
 PUYALLUP, WA 98371

PATRIOT FIRE PROTECTION, INC.
 2707 70TH AVE E
 TACOMA, WA 98424
 TEL: (253) 926-2290
 FAX: (253) 922-6150

DESIGNER: HUNTER ANDERSON SHEET: **FP-1**
 DATE: 7/7/2025
 JOB NO.: 12-24254

City of Puyallup Development & Permitting Services
ISSUED PERMIT