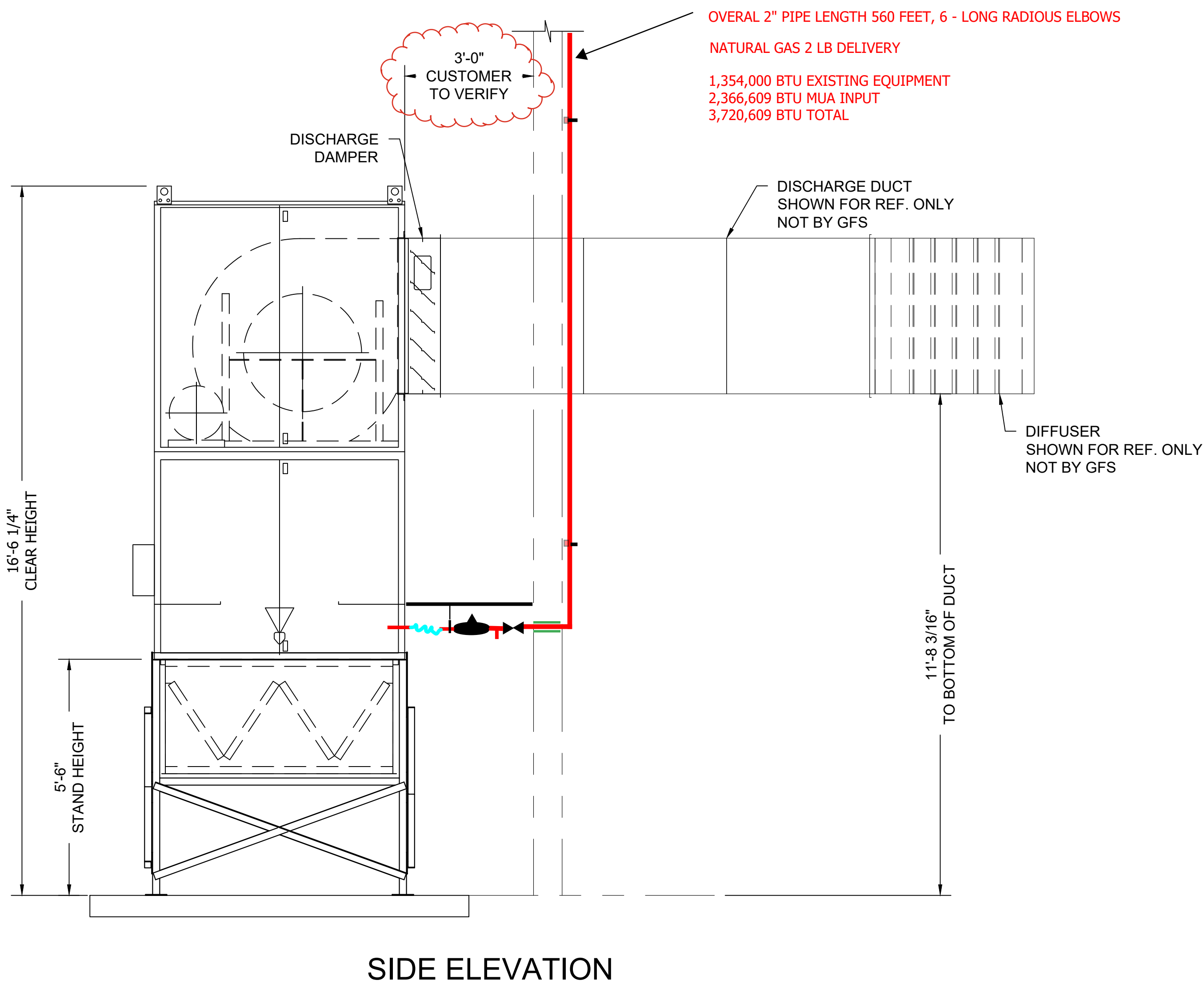


- NOTES:
- STAND IS FABRICATED FROM TUBE AND ANGLE FRAMES WITH CHANNEL SUPPORTS. STAND IS PAINTED GRAY.
 - DUCT SUPPORT NOT SUPPLIED OR DESIGNED BY GFS. EQUIPMENT IS NOT DESIGNED TO SUPPORT DUCT. DUCT SUPPORTS SHALL BE DESIGNED TO RELIEVE THE EQUIPMENT OF ALL DUCT LOAD.
 - INCLUDED, BUT NOT SHOWN:
(1) RUPP CONTROL PANEL w/ START/STOP INTERLOCK
 - CONTROLS FOR "E" INCLUDED ON "F"

CUSTOMER APPROVAL of DRAWINGS		
SIGNED DRAWING(S) IS A STATEMENT THAT THE DIMENSIONS, DESIGN AND APPLICATION HAVE BEEN REVIEWED AND ARE APPROVED FOR FABRICATION.		
MANUFACTURE OF EQUIPMENT WILL BE SCHEDULED AFTER RECEIPT OF APPROVED DRAWINGS.		
REQUIRED INFORMATION		
INFO	VALUE	CUSTOMER VERIFICATION
GAS PRESSURE:	29"-5#	<input type="checkbox"/> YES <input type="checkbox"/> OTHER:
VOLTAGE:	480	<input type="checkbox"/> YES <input type="checkbox"/> OTHER:
PHASE:	3	<input type="checkbox"/> YES <input type="checkbox"/> OTHER:
ROOF PITCH:	NA	<input type="checkbox"/> YES <input type="checkbox"/> OTHER:
GFS STANDARD CONTROL PANEL S.C.C.R.:		5KA RMS
<input type="checkbox"/> APPROVED AS SUBMITTED <input type="checkbox"/> DISAPPROVED - PLEASE RESUBMIT		
GFS WILL NOT BE RESPONSIBLE FOR BACK CHARGES WHEN INFORMATION PROVIDED IS INCORRECT.		
AUTHORIZED SIGNATURE:		

THE AMU HAS BEEN SIZED WITH AN EXTERNAL STATIC PRESSURE (ESP) OF: 0.5", OF WHICH, AN ALLOWANCE OF 0.5" OF STATIC PRESSURE HAS BEEN MADE AVAILABLE FOR CUSTOMER PROVIDED DUCT. IF THE DUCT ALLOWANCE IS NOT ACCURATE, PLEASE CONSULT GFS FOR RESIZING OF THE FAN(S).



SIDE ELEVATION

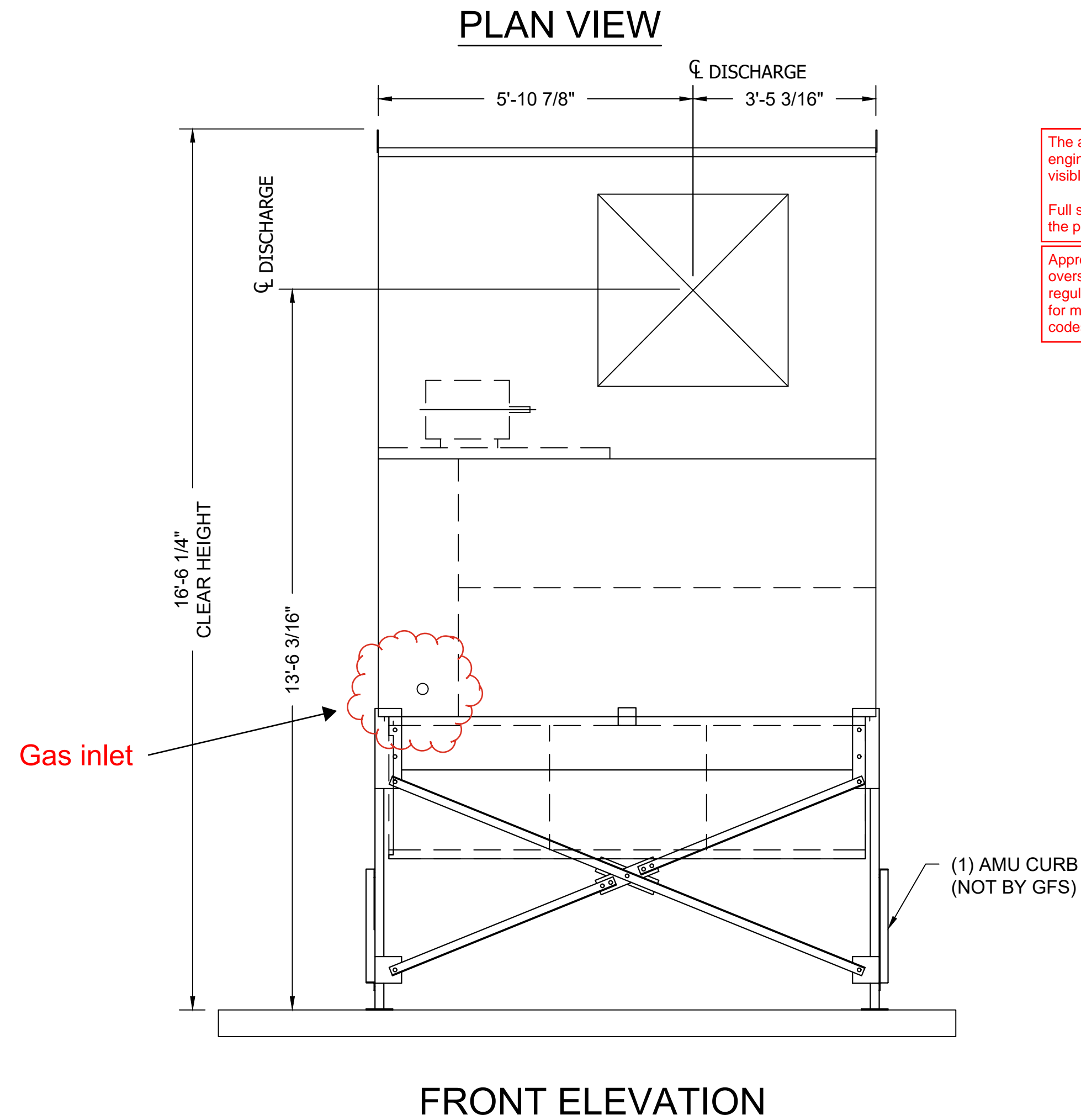
OVERALL 2" PIPE LENGTH 560 FEET, 6 - LONG RADIUS ELBOWS

NATURAL GAS 2 LB DELIVERY

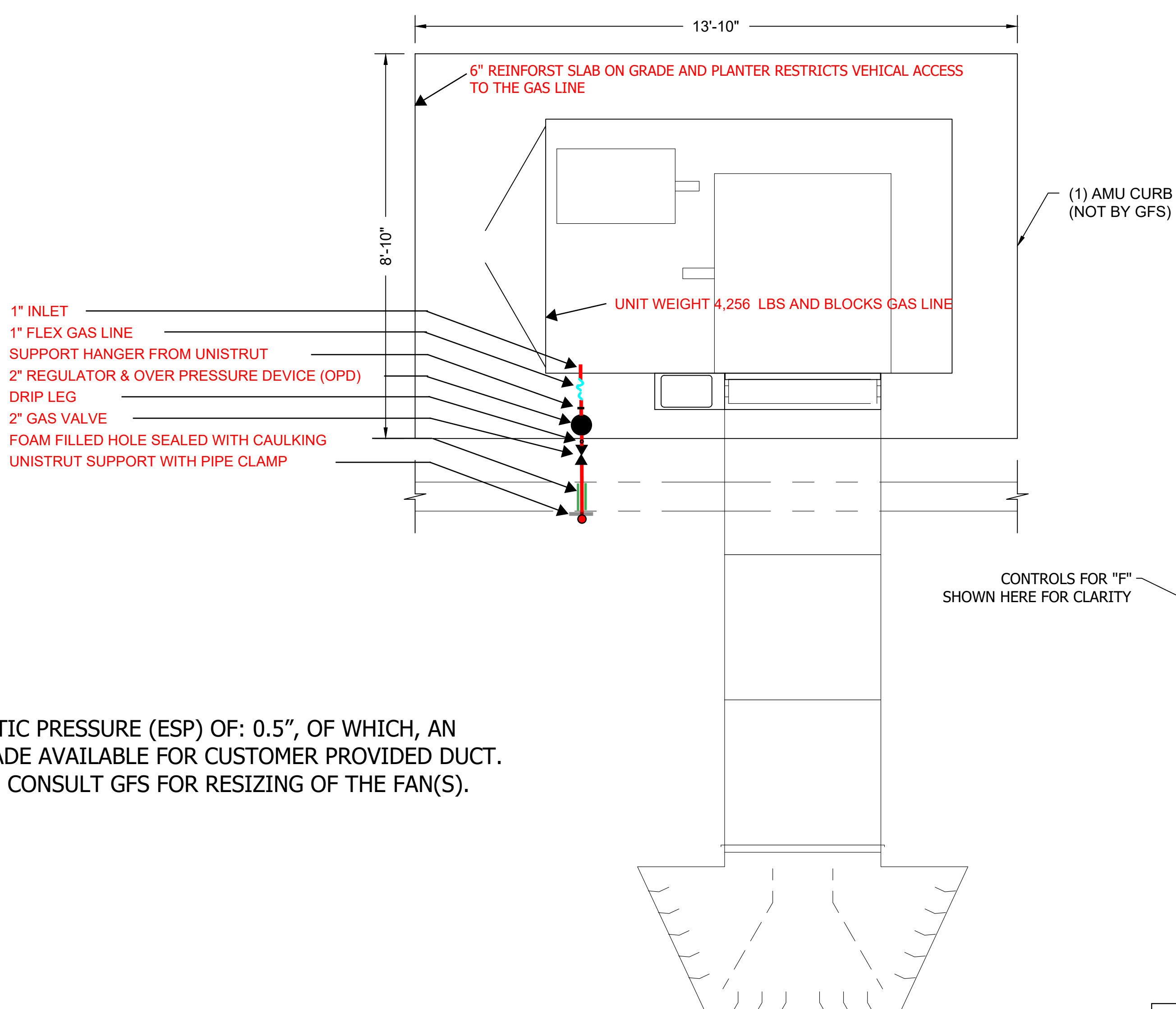
1,354,000 BTU EXISTING EQUIPMENT

2,366,609 BTU MUA INPUT

3,720,609 BTU TOTAL



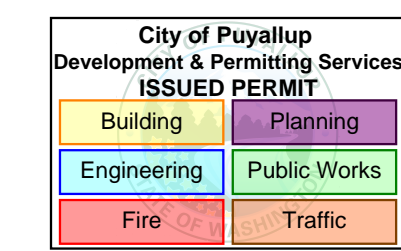
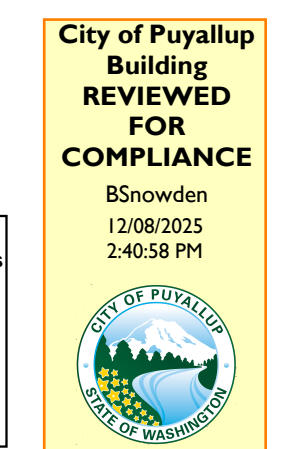
FRONT ELEVATION



PLAN VIEW

BOOTH EQUIPMENT SPECIFICATIONS	
AIR MAKE-UP UNIT	
PART #	1083331
MODEL #	CFA 36
ARRANGEMENT	VERTICAL
LOCATION	OUTDOOR
HEAT SOURCE	DIRECT FIRED
OUTPUT BTU/HR	2,177,000
TEMP. RISE	60°F
GAS PRESSURE	29"-5#
GAS TYPE	NG
CFM	33,600
DUCT ESP	1/2"
HORSEPOWER	20
VOLTAGE	460
PHASE	3
MOTOR	ODP
GAS INLET SIZE	1"
UNIT WEIGHT	4,256
QUANTITY	1
MINIMUM 36" AREA IN FRONT OF AMU ACCESS DOORS TO BE CLEAR OF PIPING AND WIRING TO ENSURE ADEQUATE CLEAR AREA FOR MAINTENANCE	
ELECTRICAL INFO	
OPERATING VOLTAGE	
480 VOLT 3PH 3W 60HZ	
FULL LOAD AMPS	61
LARGEST MOTOR HP	20
TOTAL HP	35
LIGHTING VOLTAGE	120
76 AMP MIN SERVICE REQ	

inH2O	PSI
55.4	2.00145



The approved construction plans, documents, and all engineering must be posted on the job at all inspections in a visible and readily accessible location.

Full sized legible color plans are required to be provided by the permittee on site for inspection.

Approval of submitted plans is not an approval of omissions or oversights by this office or non compliance with any applicable regulations of local government. The contractor is responsible for making sure that the building complies with all applicable codes and regulations of the local government.

GLOBAL FINISHING SOLUTIONS
12731 NORWAY ROAD
OSSEO, WI 54758 USA
800-848-8738
globalfinishing.com

PRMH20251492

SCALE	1/2" = 1'-0"
DRAWN BY	NM
DATE	6/17/2025
REVIEW BY	NM
REVIEW DATE	6/23/2025

MODEL INFO
AMU-CFA-36-OVS-SP
AIR MAKEUP UNIT

SOLD TO
ADVANCED FINISHING SYSTEMS
7515 NE 33RD DRIVE
PORTLAND, OR 97211

SHIP TO
CODEL DOOR
1601 INDUSTRIAL WAY
PUYALLUP, WA 98371

ORDER/SERIAL NUMBER
U178152-E

DRAWING SET
DS

REVISION
A

DRAWING
E-GA

CORRECTION #2 PLAN