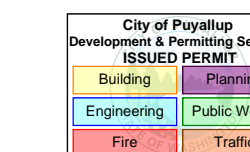


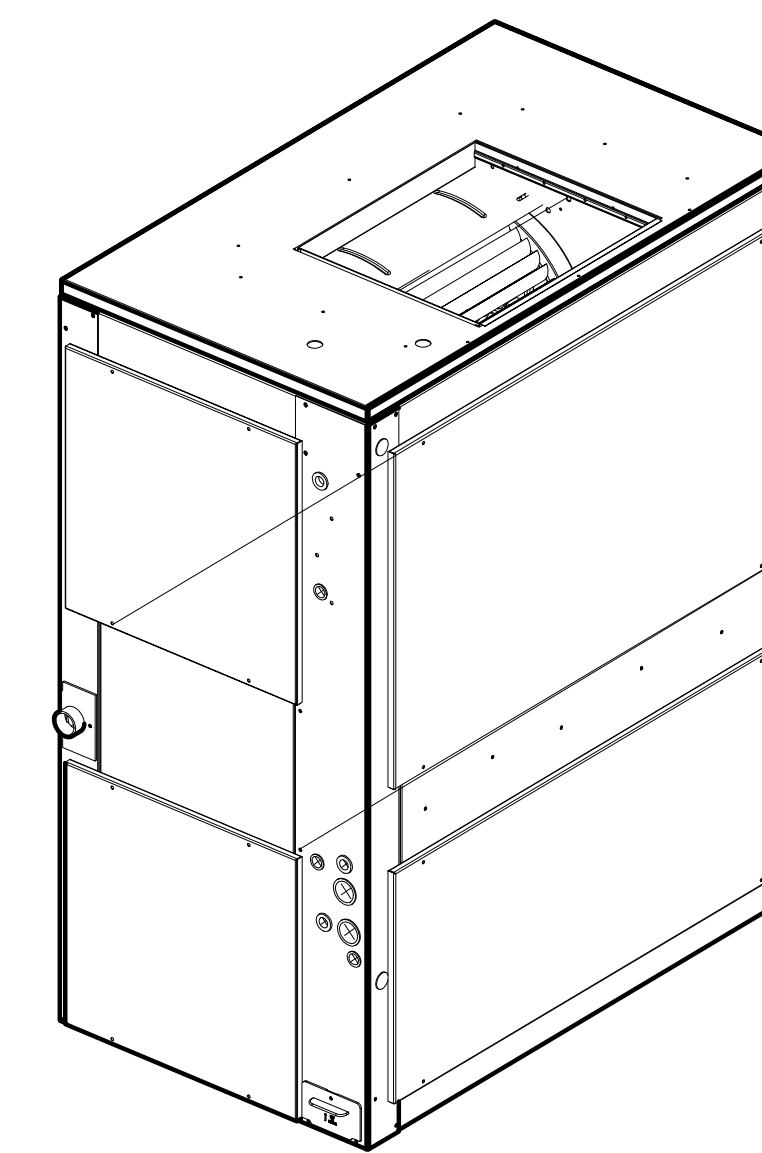
PRMH20260372



I.D. No.	Mfr.	Model	Refrigerant	Cooling Capacity					Heating Capacity			Electrical Data				Op. Wt.	Line Set	Notes
				BTUH TOTAL	BTUH SENSIBLE	EER	EER <sub>2</sub>	IEER	BTUH	COP (High)	COP (Low)	Voltage	Ph.	MCA	MOCPP			
				CU-2	Trane	TWA2404DAA	R-454B	248,110	205,420	10.00	9.60	12.50	218,120	3.20	2.05			

I.D. No.	Mfr.	Model	Indoor Fan				Unit Power			Op. Wt.	Outside Air CFM	Notes	
			CFM	E.S.P.	RPM	B.H.P.	Voltage	Ph.	MCA				MOCPP
			AH-2	Trane	TWE20444BAA	8000	0.50	872	3.82				460

- Notes:
1. Provide Two-Speed - VFD - Variable control.
  2. Provide smoke detector. (APC SL2000P) Provide direct shutdown of unit.



AH-2 (20-TON)	EXISTING UNIT	NEW UNIT
MODEL	TRANE TWE240B400C	TRANE TWE20444BAA
EER	8.5	10.0
WEIGHT	818 lbs	831 lbs

THIS IS A 15 lb INCREASE (1.6%)

### UNIT COMPARISON MATRIX

#### GENERAL NOTES

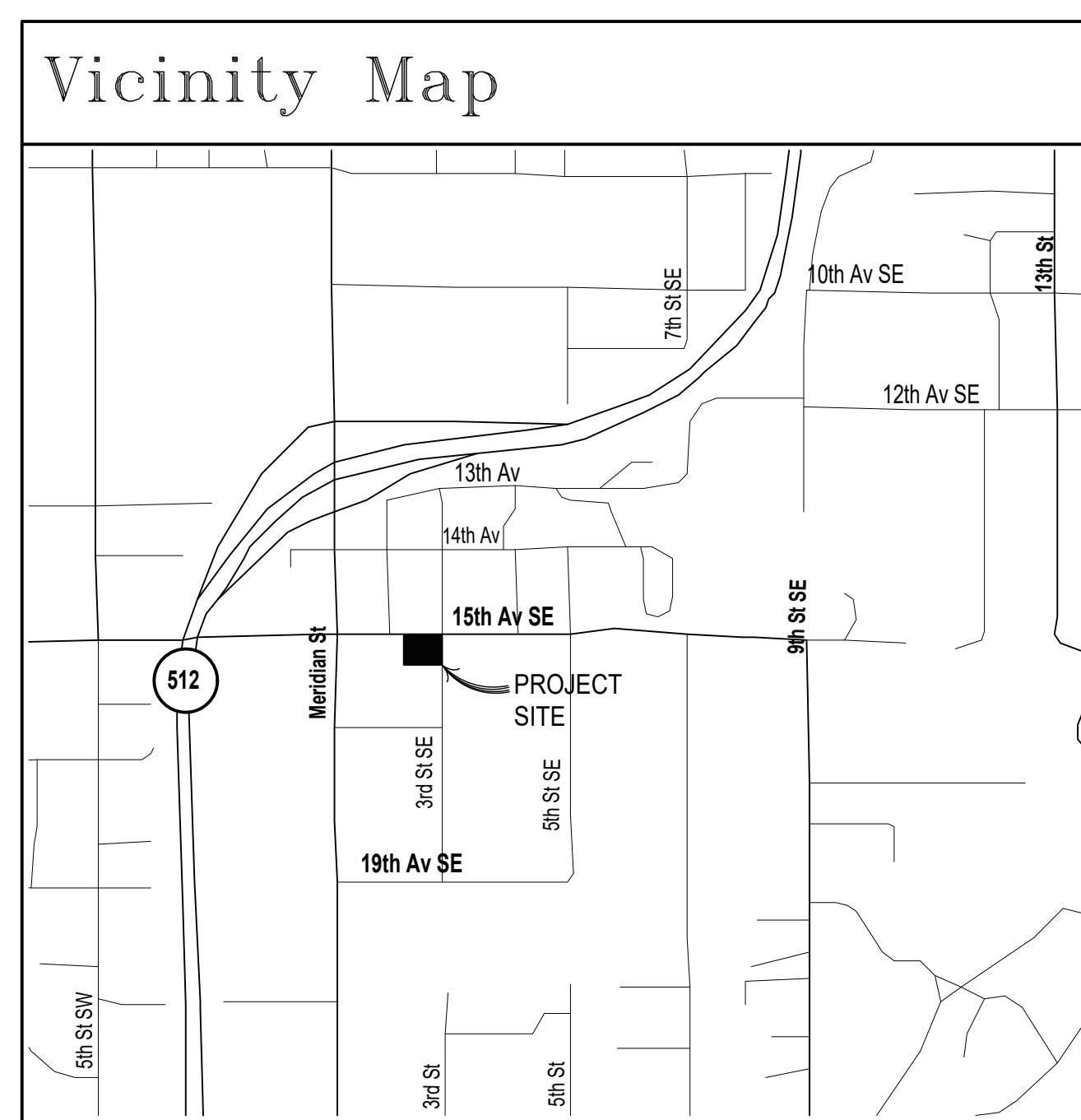
1. All duct sizes shown are clear **inside** dimensions.
2. All duct gauges and supports per 2021 International Mechanical Code and SMACNA Duct Construction Manual.
3. ASEI to test airflow upon project completion.
4. Provide 1" thick pipe insulation with k-value between 0.21 - 0.28 for 100°F mean rating temperature for refrigerant piping.
5. All duct transverse seams and longitudinal joints shall be sealed. All ductwork is constructed and sealed per IMC. OSA ductwork meets air leakage requirements per C402.5 and vapor retarder requirements per the IBC.
6. Materials within ducts or plenums shall have a flame spread rating less than 25 and a flame smoke development rating less than 50 per WSEC 2018.
7. All duct systems on this project are low pressure.
8. Condensate drain piping shall be copper, PVC, or PEX.

#### Scope of Work:

- Remove existing Trane 20-Ton split system.
- Reclaim remaining R22 refrigerant per EPA requirements and dispose unit to metal recycling facility.
- Furnish and install (1) new Trane 20-ton split system heat pump with auxiliary heat strips.
- Provide crane and operator to remove existing unit and set new unit in place.
- Disconnect and reconnect line voltage electrical circuit for the HVAC unit. Includes installing new disconnect box, fuses, and electrical whip as needed.
- All work to be performed by our in-house licensed electricians.
- Check, test, and start new unit to ensure proper operation.
- Provide owner's manual and instructions.
- One-year warranty on all materials installed and workmanship.

#### COMPLETION

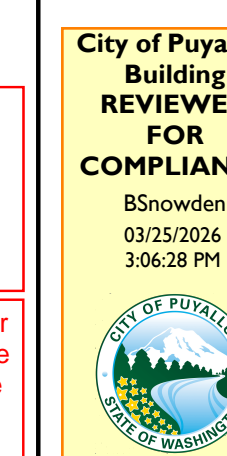
Provide Test and Balance Report, Equipment Startup Test Reports, Operation and Maintenance Manuals, and As-built Record Drawings, as applicable, to Owner upon Project Completion.



VICINITY MAP  
PARCEL #: 779000045

Sheet	Title
M-1	HVAC Notes & Schedules
M-2	HVAC Attic Plan
M-3	HVAC Section

CITY OF PUYALLUP APPROVAL



The approved construction plans, documents, and all engineering must be posted on the job at all inspections in a visible and readily accessible location.

Full sized legible color plans are required to be provided by the permittee on site for inspection.

Approval of submitted plans is not an approval of omissions or oversights by this office or non compliance with any applicable regulations of local government. The contractor is responsible for making sure that the building complies with all applicable codes and regulations of the local government.

PROJECT

PUYALLUP MEDICAL BUILDING - UNIT B  
REPLACE SPLIT SYSTEM  
220 15th AVE SE  
PUYALLUP, WA 98372

REVISIONS

NO.	DATE	DESCRIPTION

DATE

MARCH 17, 2026

ASER NO.

X13536

DRAWN BY:

BRR

DESIGN BY:

JWTK

REVIEWED BY:

SHEET TITLE

HVAC NOTES & SCHEDULES

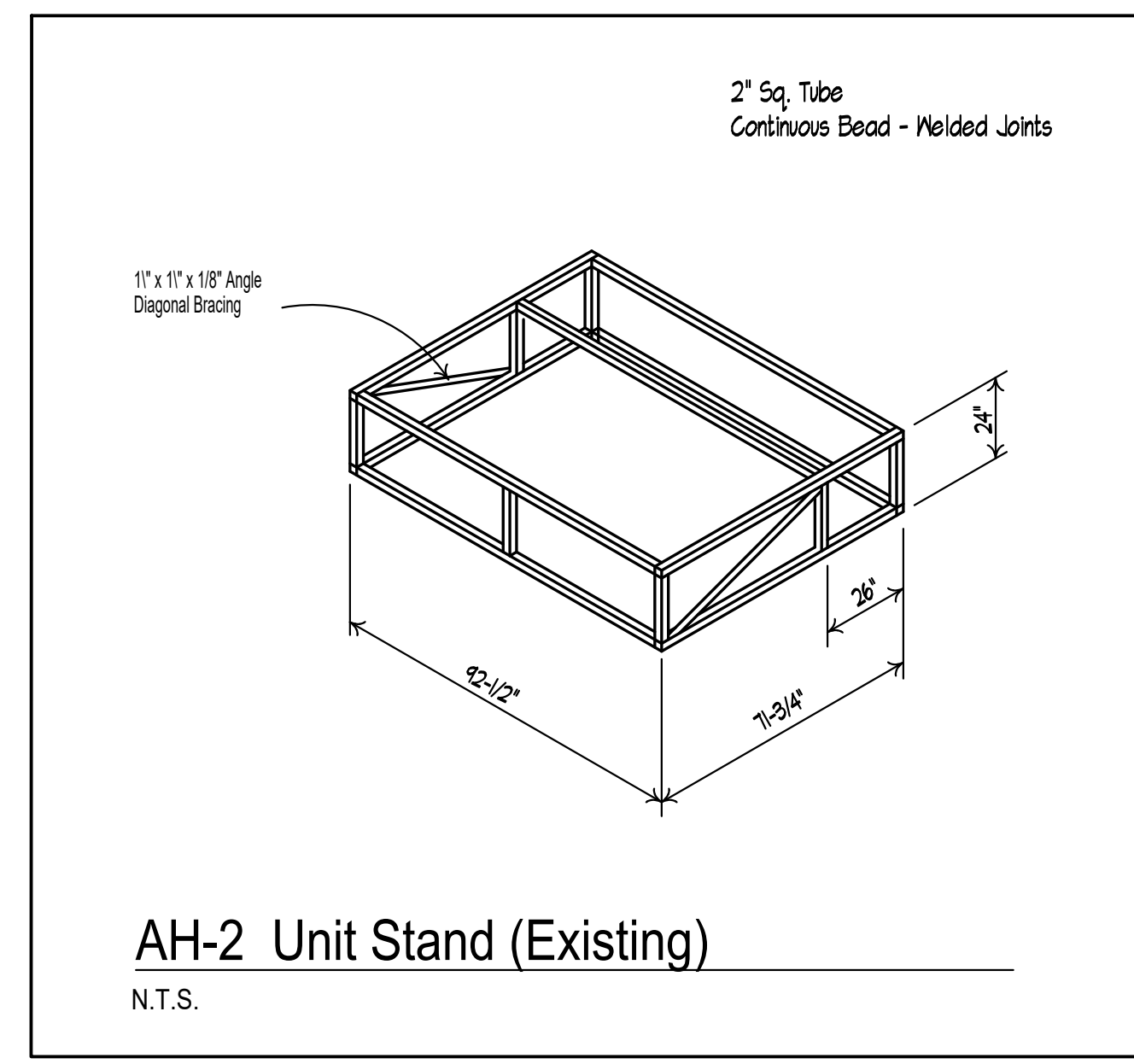
© COPYRIGHT 2025 - ASEI, INC. ALL RIGHTS RESERVED SHEET

M-1

OF 3

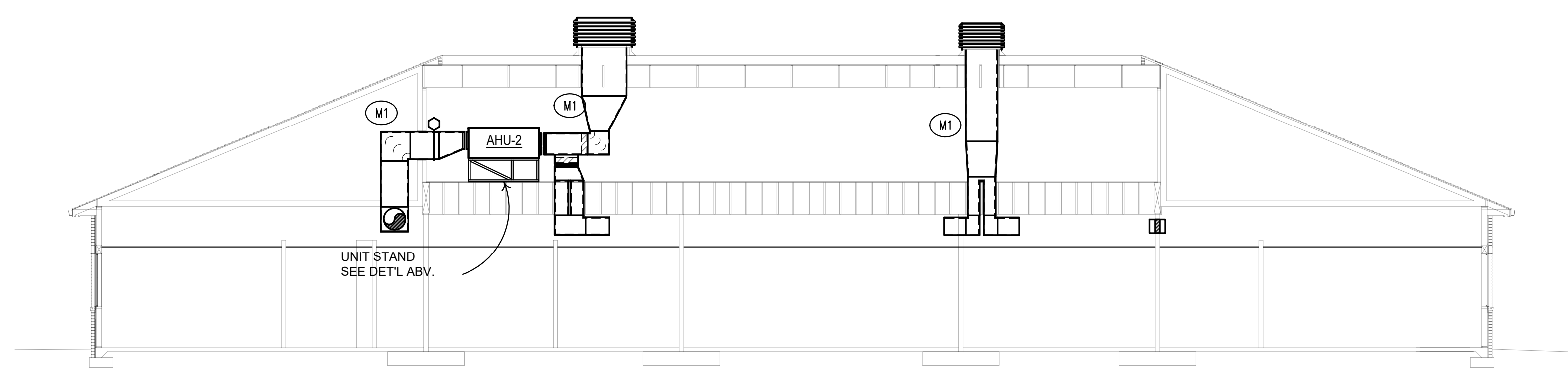
Air Systems Inc. Engineering Inc. COMFORTUSA  
AIR CONDITIONING/REFRIGERATION/MECHANICAL/PLUMBING/ELECTRICAL/ROOFING & MAINTENANCE  
10000 15th Ave SE, Puyallup, WA 98372  
253-866-4444  
www.air-systems.com





**KEY NOTES**

M1 EXISTING DUCT TO REMAIN AS FOUND (SHOWN FOR REFERENCE ONLY)



**Section 'A - A'**  
Scale: 1/8"=1'-0"

**Air Systems Engineering Inc.**  
COMFORTUS USA  
AIR CONDITIONING/METAL FABRICATION/PROFESSIONAL ENGINEERING/SERVICE & MAINTENANCE  
AIR CONDITIONING/METAL FABRICATION/PROFESSIONAL ENGINEERING/SERVICE & MAINTENANCE  
220 15th AVE SE  
PUYALLUP, WA 98372

**PROJECT:**  
PUYALLUP MEDICAL BUILDING - UNIT B  
REPLACE SPLIT SYSTEM  
220 15th AVE SE  
PUYALLUP, WA 98372

REVISIONS	PLAN REVIEW	COMMENTS

DATE: **MARCH 20 2016**

ASNO: X13536

DRAWN BY: BSR DESIGN BY: JWTK

SHEET TITLE: HVAC SECTION