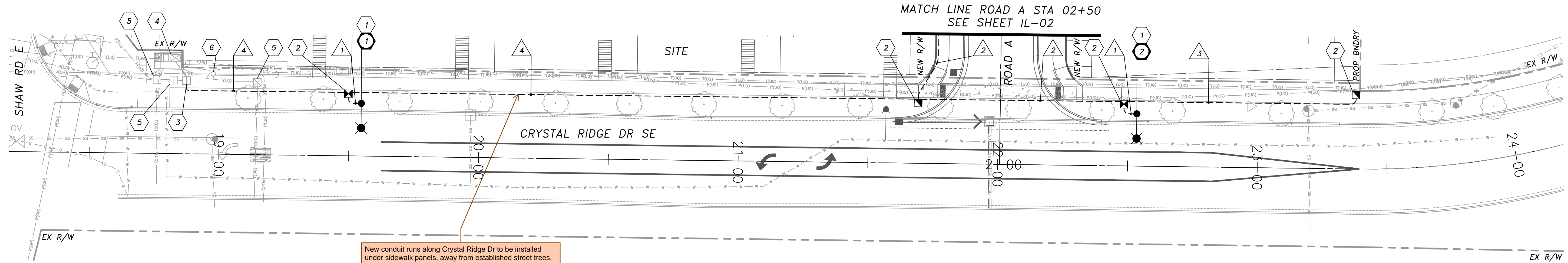


SECTION 35, TOWNSHIP 20 NORTH, RANGE 4 E., W.M.



CITY OF PUYALLUP ILLUMINATION GENERAL NOTES

- ALL WORK SHALL BE IN ACCORDANCE WITH CITY OF PUYALLUP PUBLIC WORKS STANDARDS AND WSDOT STANDARDS AND SPECIFICATIONS.
- THE LOCATIONS OF FEATURES SHOWN ARE APPROXIMATE AND SHALL BE VERIFIED BY THE CONTRACTOR PRIOR TO CONSTRUCTION START.
- UTILITY LOCATIONS ARE APPROXIMATE AND SHALL BE VERIFIED IN THE FIELD BY THE CONTRACTOR PRIOR TO ANY ILLUMINATION WORK.
- ALL WORK SHALL BE CONSISTENT WITH UTILITY AGENCY REQUIREMENTS. THE CONTRACTOR SHALL COORDINATE WITH AFFECTED UTILITY AGENCIES THROUGHOUT THE PROJECT. THE CONTRACTOR SHALL BE RESPONSIBLE FOR ANY DAMAGE TO UTILITIES.
- CONDUIT LOCATIONS ARE SHOWN FOR ILLUSTRATIVE PURPOSES. ACTUAL LOCATIONS SHALL BE DETERMINED BY THE CONTRACTOR IN THE FIELD.
- CONTRACTOR SHALL COORDINATE WITH THE CITY SIGNAL/ILLUMINATION TECHNICIAN AT 253-405-4390 PRIOR TO CONSTRUCTION.
- THE LOCATION OF ALL CONDUITS, JUNCTION BOXES, POLES, AND CABINETS SHOWN ON THIS PLAN MAY BE ADJUSTED IN THE FIELD TO AVOID CONFLICTS AND MEET ADA REQUIREMENTS. ALL FINAL LOCATIONS SHALL BE APPROVED BY THE CITY TRAFFIC ENGINEER PRIOR TO CONSTRUCTION.
- JUNCTION BOX LOCATIONS SHOWN ARE FOR ILLUSTRATIVE PURPOSES ONLY. JUNCTION BOXES SHALL BE FIELD LOCATED BY THE CONTRACTOR WITH DIRECTION FROM THE CITY.
- CONTRACTOR SHALL ADJUST JUNCTION BOX LIDS TO BE FLUSH WITH TOP OF SIDEWALK.
- ANY NEW JUNCTION BOX WHICH WILL BE LOCATED WITHIN OR PARTIALLY WITHIN SIDEWALK SHALL HAVE LIDS AND FRAMES WITH A NON-SLIP COATING ON THE TOP SURFACE EQUAL TO MEBAC1 OR SLIPNOT#3.

ILLUMINATION GENERAL NOTES

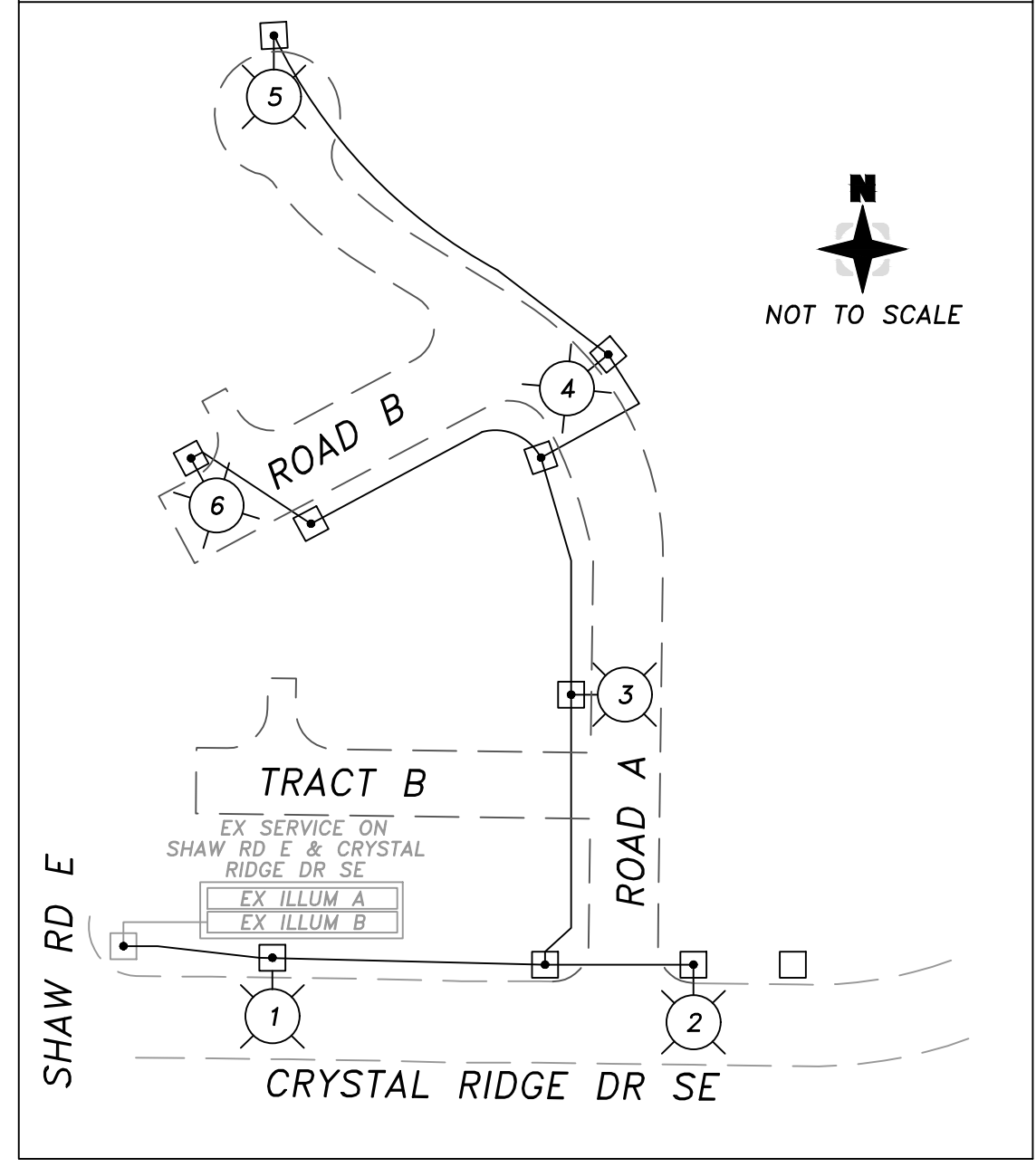
- ALL CONDUCTORS FOR ALL ELECTRICAL EQUIPMENT SHALL BE LABELED IN EACH JUNCTION BOX.
- THE CONTRACTOR SHALL SUBMIT A REQUEST TO THE INSPECTOR FOR MATERIALS APPROVAL AT THE EARLIEST POSSIBLE DATE, OR MIN. 30-DAYS PRIOR TO REQUIRED APPROVAL DATE.
- THE CONTRACTOR SHALL BE RESPONSIBLE FOR ANY DAMAGE TO EXISTING UTILITIES. THE CONTRACTOR SHALL NOTIFY THE AFFECTED UTILITY COMPANY AND THE CITY OF PUYALLUP IMMEDIATELY UPON DAMAGE.
- EXISTING FEATURES TO REMAIN UNLESS OTHERWISE NOTED.
- THE TOP ELEVATION OF ALL POLE FOUNDATIONS SHALL BE APPROVED BY THE INSPECTOR PRIOR TO PLACING CONCRETE.
- IF STREET LIGHT IS TO BE INSTALLED GREATER THAN 4 FEET FROM EDGE OF THE DRIVING SURFACE THE STREET LUMINAIRE ARMS SHALL BE ADJUSTED TO A DIMENSION THAT PROVIDES A MINIMUM OF 3-FT OVERHANG ONTO THE DRIVING SURFACE PER CITY OF PUYALLUP STANDARD PLAN 01.05.04.
- ALL PROJECT MATERIALS SHALL BE REVIEWED AND APPROVED BY THE CITY OF INSPECTOR PRIOR TO PROCUREMENT. MATERIALS NOT APPROVED BY THE CITY OF INSPECTOR SHALL NOT BE ALLOWED ON THE JOB SITE.
- SEE CITY OF PUYALLUP STANDARD PLANS 01.05.01 AND 01.05.02 FOR STREET LIGHT SPECIFICATIONS.
- AS PART OF THE DESIGN PROCESS, THE ENGINEER HAS ATTEMPTED TO CONFIRM THAT THERE ARE NO CONFLICTS WITH OVERHEAD POWER LINES OR SUBSURFACE UTILITIES. HOWEVER, IT IS POSSIBLE FOR THE EXISTING OR PROPOSED CONDITIONS TO CHANGE PRIOR TO IMPLEMENTATION OF THE SCOPE OF WORK IDENTIFIED ON THESE DOCUMENTS. AS THE FIRST ORDER OF BUSINESS, THE CONTRACTOR SHALL CONFIRM THAT THERE ARE NO CONFLICTS WITH SUBSURFACE UTILITIES. ADDITIONALLY, THE CONTRACTOR SHALL CONFIRM THAT MINIMUM CIRCUMFERENTIAL CLEARANCES, AS NOTED IN WAC 296-155-53408 TABLE 4 - MINIMUM CLEARANCE DISTANCES, ARE PROVIDED, PRIOR TO POLE PLACEMENT. ADDITIONAL CLEARANCE MAY BE REQUIRED AS DIRECTED BY THE UTILITY. THE CONTRACTOR SHALL CONTACT THE ENGINEER IMMEDIATELY IF A CONFLICT IS DISCOVERED.

CITY OF PUYALLUP POLE SPACING REQUIREMENTS

ROADWAY	CLASSIFICATION	MAX. SPACING*
CRYSTAL RIDGE DR SE	MINOR COLLECTOR	300'
ROAD A	LOCAL	300'
ROAD B	LOCAL	300'

* CITY OF PUYALLUP STANDARDS SECTION 102.12

ILLUMINATION WIRING DIAGRAM



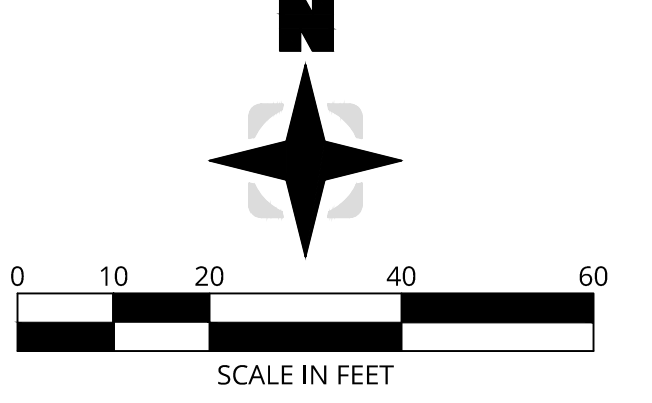
ILLUMINATION CONSTRUCTION NOTES

- CONSTRUCT FOUNDATION PER CITY OF PUYALLUP STANDARD PLAN 01.05.06. FURNISH AND INSTALL NEW LUMINAIRE WITH SHORTING CAP, POLE AND ARM PER CITY OF PUYALLUP STANDARD PLANS 01.05.01, 01.05.02, 01.05.03 & 01.05.04, AND PER ILLUMINATION POLE SCHEDULE, THIS SHEET.
- INSTALL NEW JUNCTION BOX PER CITY OF PUYALLUP STANDARD PLAN 01.06.01.
- EXTEND NEW CONDUIT TO EXISTING JUNCTION BOX. PULL NEW ILLUMINATION CONDUCTORS THROUGH NEW CONDUIT TO EXISTING JUNCTION BOX AND SPLICE NEW ILLUMINATION CONDUCTORS TO EXISTING ILLUMINATION CONDUCTORS USING CITY-APPROVED SPLICE KIT.
- EXISTING SERVICE CABINET AT THE NORTHEAST CORNER OF THE SHAW RD E AND CRYSTAL RIDGE DR SE INTERSECTION TO REMAIN. PROTECT DURING CONSTRUCTION.
- EXISTING JUNCTION BOX TO REMAIN. PROTECT DURING CONSTRUCTION.
- EXISTING UTILITY POLE TO REMAIN. PROTECT DURING CONSTRUCTION.

ILLUMINATION WIRING SCHEDULE

NO.	RACEWAY CONDUIT SIZE	ILLUM. #8		EQUIP. GRND. #8		DETECT. PULL WIRE		CONDUIT FILL	ALLOW. FILL (26%)	ALLOW. FILL (40%)
		EX.	NEW	EX.	NEW	EX.	NEW			
1	2" SCH40 PVC		2		1			0.17	0.86	---
2	2" SCH80 PVC		2		1			0.17	0.75	---
3	2" SCH40 PVC SPARE						1	---	0.86	---
4	2" SCH40 PVC SPARE						1	---	0.86	---
4	2" SCH40 PVC		2		1			0.17	0.86	---
4	2" SCH40 PVC SPARE						1	---	0.86	---

* EQUIPMENT GROUND SIZE SHALL BE EQUAL TO OR LARGER THAN THE LARGEST WIRE SIZE IN THE CONDUIT (MIN SIZE #8).



APPROVED

BY: CITY OF PUYALLUP DEVELOPMENT ENGINEERING

DATE:

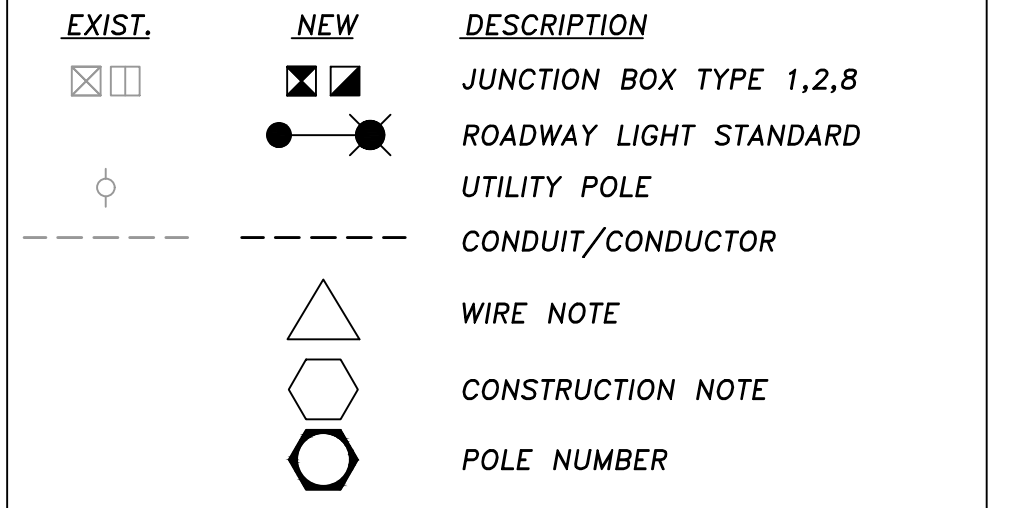
NOTES: THIS APPROVAL IS VOID AFTER 180 DAYS FROM APPROVAL DATE. THE CITY WILL NOT BE RESPONSIBLE FOR ERRORS AND/OR OMISSIONS ON THESE PLANS. FIELD CONDITIONS MAY DICTATE CHANGES TO THESE PLANS AS DETERMINED BY THE DEVELOPMENT ENGINEERING MANAGER.

ILLUMINATION POLE SCHEDULE

LUM. POLE NO.	STREET	STATION*	OFFSET*	POLE HEIGHT	MOUNT. HEIGHT	VOLTAGE	ARM LENGTH	SERVICE/CIRCUIT	WATTAGE /TYPE	INITIAL LUMENS	LUMINAIRE TYPE	DISTRIB. TYPE	COLOR TEMP.	POLE TYPE	BASE	COMMENT
1	CRYSTAL RIDGE DR SE	19+54.5	20.0' LT	~28'	30'	240	8'	EX ILLUM B	54W LED	7,992	GCJ3-30J-MV-40K-2R-GY-080-SC	II	4000K	ROUND STEEL	FIXED	INSTALL FOUNDATION PER CITY OF PUYALLUP STD 01.05.06.
2	CRYSTAL RIDGE DR SE	22+53.5	20.0' LT	~28'	30'	240	8'	EX ILLUM B	54W LED	7,992	GCJ3-30J-MV-40K-2R-GY-080-SC	II	4000K	ROUND STEEL	FIXED	INSTALL FOUNDATION PER CITY OF PUYALLUP STD 01.05.06.
3	ROAD A	03+73.0	17.0' LT	~28'	30'	240	8'	EX ILLUM B	54W LED	7,992	GCJ3-30J-MV-40K-2R-GY-080-SC	II	4000K	ROUND STEEL	FIXED	INSTALL FOUNDATION PER CITY OF PUYALLUP STD 01.05.06.
4	ROAD A	06+72.0	17.0' RT	~28'	30'	240	8'	EX ILLUM B	54W LED	7,992	GCJ3-30J-MV-40K-2R-GY-080-SC	II	4000K	ROUND STEEL	FIXED	INSTALL FOUNDATION PER CITY OF PUYALLUP STD 01.05.06.
5	ROAD A	09+67.5	22.5' RT	~28'	30'	240	8'	EX ILLUM B	54W LED	7,992	GCJ3-30J-MV-40K-2R-GY-080-SC	II	4000K	ROUND STEEL	FIXED	INSTALL FOUNDATION PER CITY OF PUYALLUP STD 01.05.06.
6	ROAD B	03+36.0	15.0' RT	~28'	30'	240	8'	EX ILLUM B	54W LED	7,992	GCJ3-30J-MV-40K-2R-GY-080-SC	II	4000K	ROUND STEEL	FIXED	INSTALL FOUNDATION PER CITY OF PUYALLUP STD 01.05.06.

* STATIONING AND OFFSETS ARE APPROXIMATE. CONTRACTOR SHALL CONFIRM ADJUSTMENTS WITH ENGINEER PRIOR TO IMPLEMENTING.

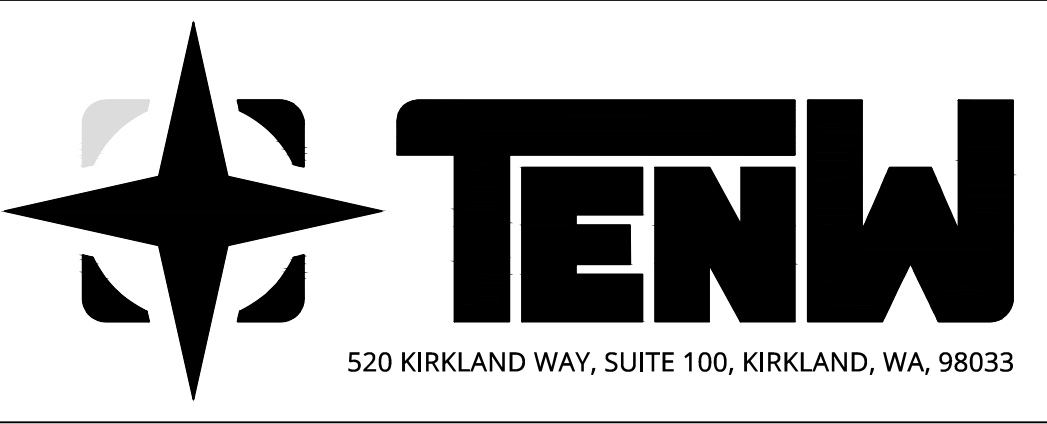
ILLUMINATION LEGEND



REVISION	DATE	BY



TENW CONTACT:
STELLA S. OH, P.E.
PROJECT MANAGER
STELLA@TENW.COM
206-412-6743



RM HOMES
2913 5TH AVE NE, SUITE 201
PUYALLUP, WA 98372
JAMES@RMHOMES.COM
JAMES KERBY

NORMANDY HEIGHTS
PUYALLUP, WA

ILLUMINATION PLAN

IL-01

SHEET:
1
OF
3

SECTION 35, TOWNSHIP 20 NORTH, RANGE 4 E., W.M.

ILLUMINATION CONSTRUCTION NOTES

- 1 CONSTRUCT FOUNDATION PER CITY OF PUYALLUP STANDARD PLAN 01.05.06. FURNISH AND INSTALL NEW LUMINAIRE WITH SHORTING CAP, POLE AND ARM PER CITY OF PUYALLUP STANDARD PLANS 01.05.01, 01.05.02, 01.05.03 & 01.05.04, AND PER ILLUMINATION POLE SCHEDULE, SHEET IL-01.
- 2 INSTALL NEW JUNCTION BOX PER CITY OF PUYALLUP STANDARD PLAN 01.06.01.
- 3 EXTEND NEW CONDUIT TO EXISTING JUNCTION BOX. PULL NEW ILLUMINATION CONDUCTORS THROUGH NEW CONDUIT TO EXISTING JUNCTION BOX AND SPLICE NEW ILLUMINATION CONDUCTORS TO EXISTING ILLUMINATION CONDUCTORS USING CITY-APPROVED SPLICE KIT.
- 4 EXISTING SERVICE CABINET AT THE NORTHEAST CORNER OF THE SHAW RD E AND CRYSTAL RIDGE DR SE INTERSECTION TO REMAIN. PROTECT DURING CONSTRUCTION.
- 5 EXISTING JUNCTION BOX TO REMAIN. PROTECT DURING CONSTRUCTION.
- 6 EXISTING UTILITY POLE TO REMAIN. PROTECT DURING CONSTRUCTION.

ILLUMINATION WIRING SCHEDULE

△ NO.	RACEWAY CONDUIT SIZE	ILLUM. #8		EQUIP. GRND. *		DETECT. PULL WIRE	CONDUIT FILL	ALLOW. FILL	
		EX.	NEW	EX.	NEW			(26%)	(40%)
1	2" SCH40 PVC	2	1	1	1		0.17	0.86	---
2	2" SCH80 PVC	2	1	1	1		0.17	0.75	---
3	2" SCH80 PVC SPARE					1	---	0.75	---
3	2" SCH40 PVC SPARE					1	---	0.86	---
4	2" SCH40 PVC	2	1	1	1		0.17	0.86	---
4	2" SCH40 PVC SPARE					1	---	0.86	---

* EQUIPMENT GROUND SIZE SHALL BE EQUAL TO OR LARGER THAN THE LARGEST WIRE SIZE IN THE CONDUIT (MIN SIZE #8).

ILLUMINATION LEGEND

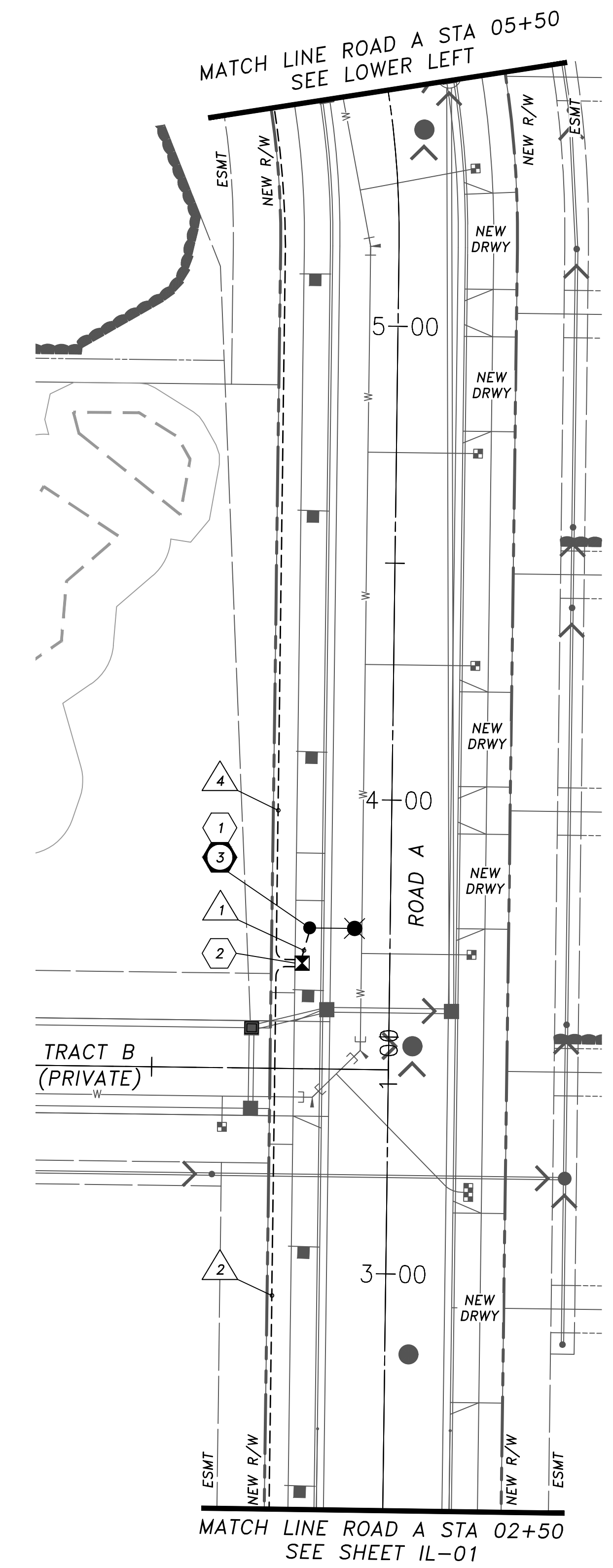
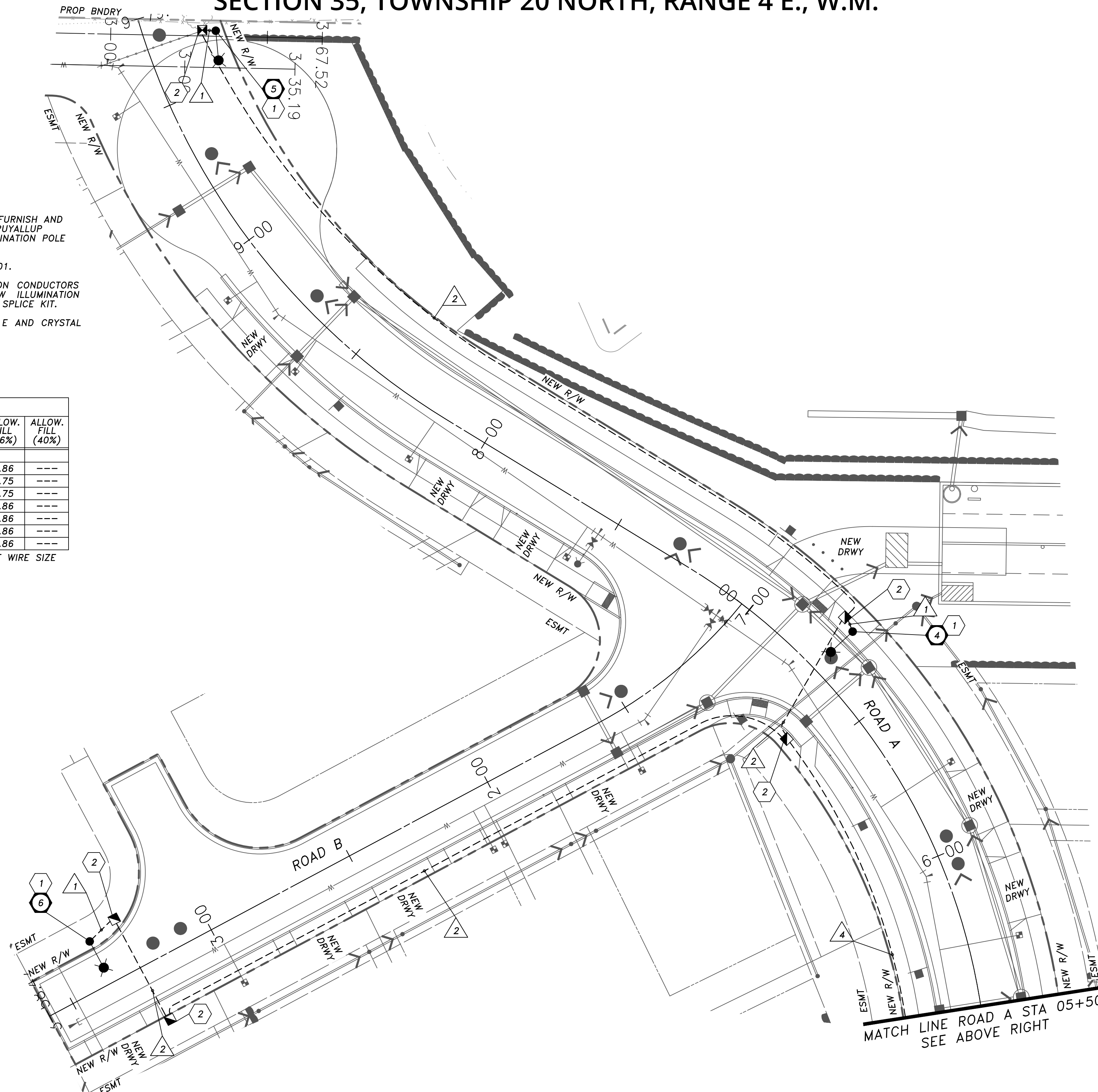
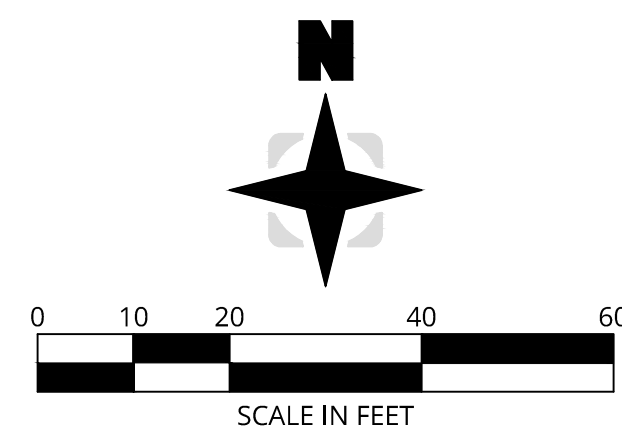
EXIST.	NEW	DESCRIPTION
□	■	JUNCTION BOX TYPE 1,2,8
●	●	ROADWAY LIGHT STANDARD
○	○	UTILITY POLE
- - -	- - -	CONDUIT/CONDUCTOR
△	△	WIRE NOTE
○	○	CONSTRUCTION NOTE
○	○	POLE NUMBER

APPROVED

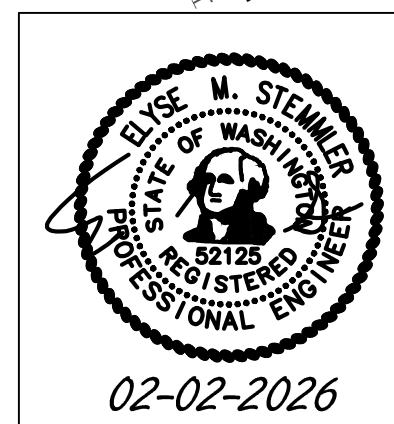
BY _____
CITY OF PUYALLUP
DEVELOPMENT ENGINEERING

DATE _____

NOTES: THIS APPROVAL IS VOID
AFTER 180 DAYS FROM APPROVAL
DATE.
THE CITY WILL NOT BE RESPONSIBLE
FOR ERRORS AND/OR OMISSIONS ON
THESE PLANS.
FIELD CONDITIONS MAY DICTATE
CHANGES TO THESE PLANS AS
DETERMINED BY THE DEVELOPMENT
ENGINEERING MANAGER.



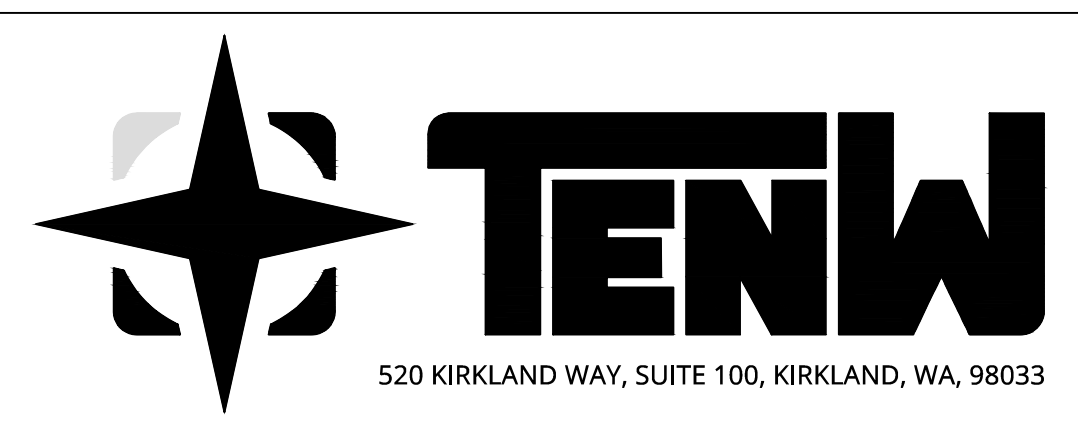
△	REVISION	DATE	BY



TENW CONTACT:

STELLA S. OH, P.E.
PROJECT MANAGER
STELLA@TENW.COM
206-412-6743

ISSUE DATE: 02-02-2026
JOB NO.: TENW #2026-026
DESIGNED BY: BL/SSO
DRAWN BY: BL
APPROVED BY: EMS



RM HOMES
2913 5TH AVE NE, SUITE 201
PUYALLUP, WA 98372
JAMES@RMHOMES.COM
JAMES KERBY

NORMANDY HEIGHTS
PUYALLUP, WA

ILLUMINATION PLAN

IL-02
SHEET:
2
OF
3

SECTION 35, TOWNSHIP 20 NORTH, RANGE 4 E., W.M.

LINE LOSS CALCULATIONS

EX ILLUM B	240	Service Voltage	A	L	R	Vd=2ALR		
Circuit Segment	Conductor Size (#)	(Watts) Load on Segment	Load on Segment (AMPS)	Length (Ft)	Resistance (ohms / Ft)	Voltage Drop (Volts)	LookUp	Σ Voltage Drop (Volts)
SVC(EX) to JB1(EX)	8	324	1.62	15	0.000809	0.04	0.000809	0.04
JB1(EX) to JB2	8	324	1.62	70	0.000809	0.18	0.000809	0.18
JB2 to JB3	8	324	1.62	225	0.000809	0.59	0.000809	0.63
JB3 to JB4	8	270	1.35	145	0.000809	0.32	0.000809	0.95
JB4 to JB5	8	216	1.08	285	0.000809	0.50	0.000809	1.44
JB5 to JB6	8	162	0.81	50	0.000809	0.07	0.000809	1.51
JB6 to JB7	8	108	0.54	290	0.000809	0.25	0.000809	1.76
JB7 to IL	10	54	0.27	50	0.001290	0.03	0.001290	1.54
%Voltage Drop=			0.64	Σ		of Voltage Drop=		1.5

STREET LIGHTING SPECIFICATIONS

- 30-FOOT STEEL STREETLIGHT STANDARD
 - DIMENSIONS**
STREETLIGHT STANDARDS SHALL PROVIDE A FIXTURE MOUNTING HEIGHT OF 30' PLUS OR MINUS 6" WITH A TYPICAL 12 FOOT MAST ARM WITH A THREE FOOT OVERHANG.

BASE PLATE SHALL HAVE SLOTTED HOLES TO ACCOMMODATE 1-INCH ANCHOR BOLTS, AND 11 1/2" BOLT CIRCLE WITH MINIMUM CLEARANCE OF 1" BETWEEN BOLT AND POLE.

HANDHOLE CENTER SHALL BE LOCATED APPROXIMATELY 12 INCHES FROM THE BASE PLATE, ROTATED 270 DEGREES FROM MAST ARM SO AS THE HANDHOLE IS LOCATED ON THE SIDE OPPOSING ONCOMING TRAFFIC.
 - STRENGTH**
POLES SHALL MEET ALL STRENGTH REQUIREMENTS OF AASHTO FOR 90 MPH ISOTACH WHEN USED WITH A LUMINAIRE WEIGHING 48 POUNDS WITH A E.P.A. OF 1.1 SQUARE FEET. ALL ATTACHING BOLTS AND SCREWS THAT ARE NOT GALVANIZED SHALL BE STAINLESS STEEL.
 - FINISH**
THE POLES AND ALL HARDWARE SHALL BE HOT DIPPED GALVANIZED, MINIMUM 3 MIL THICKNESS.
 - MAST ARM ATTACHMENT SHALL BE SECURED BY 3 BOLTS.
 - EACH POLE SHALL HAVE HANDHOLE (WITH COVER), GROUND LUG AND REMOVABLE POLE CAP.
 - EACH CITY POLE SHALL HAVE A BLACK 4" TO 6" LETTER C STENCILED ON ROADWAY SIDE OF POLE 16" ABOVE GRADE.
- ANCHORAGE**
POLES SHALL BE ANCHORED WITH 4 BOLTS, 1"x3/8"x24" #BUNG WITH HOT DIPPED GALVANIZING AFTER THREADS ARE CUT. GALVANIZED AREA SHALL EXTEND FROM THREADED END FOR A MINIMUM OF 12 INCHES. BOLTS SHALL BE PROVIDED WITH 2 GALVANIZED NUTS AND FLAT WASHERS FOR LEVELING. SHIMS WILL NOT BE USED.

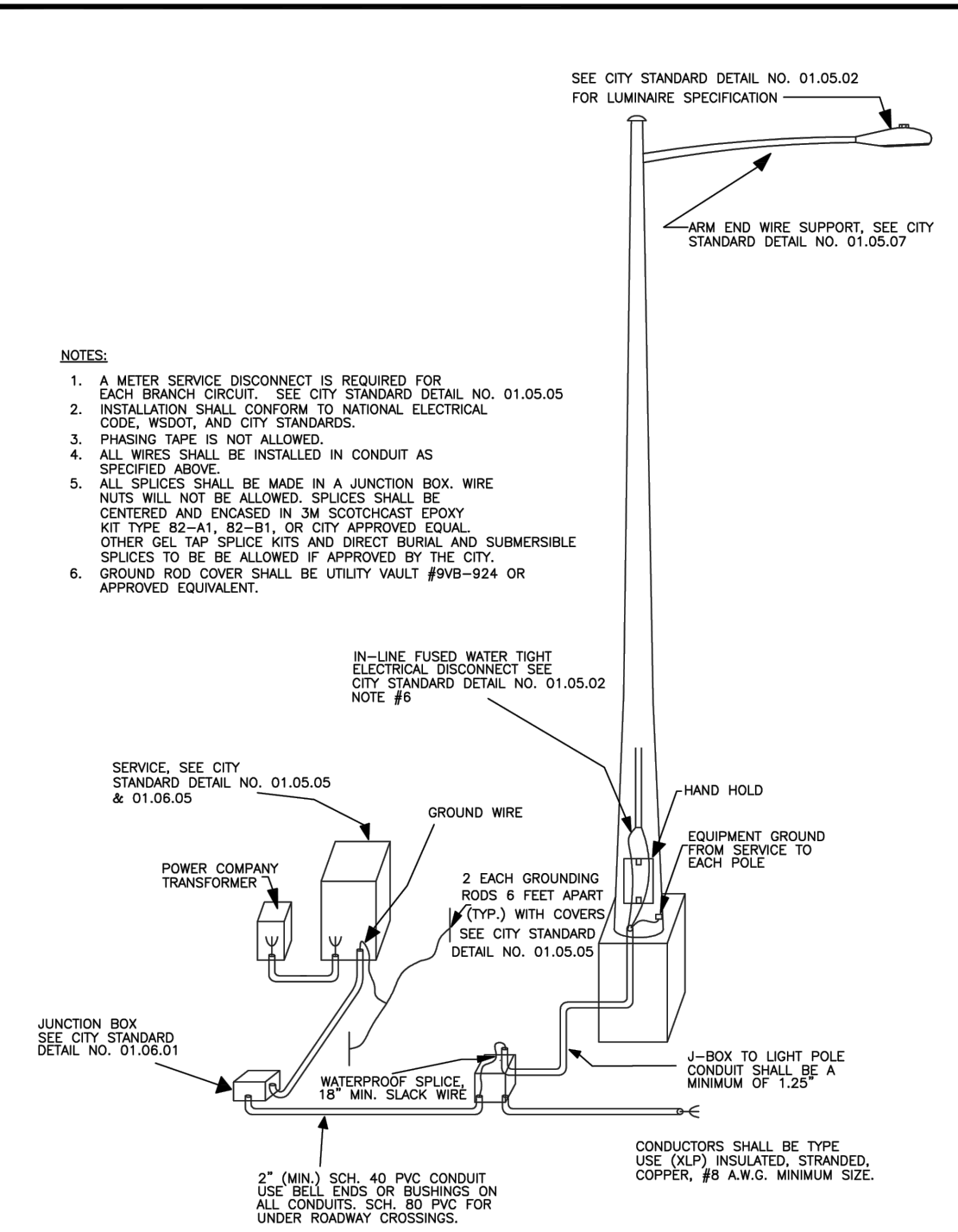
A NON-SHRINKING GROUT SHALL BE INSTALLED WITH ONE 1/2" DRAIN HOLE UNDER THE BASE PLATE AFTER THE ENGINEER HAS APPROVED THE POLE INSTALLATION.
- CONDUIT**
ALL CONDUIT SHALL BE BURIED A MINIMUM OF 24 INCHES DEEP. ALL ROADWAY CROSSINGS SHALL BE RIGID METALLIC OR SCHEDULE 80 PVC. CONDUIT SHALL CONFORM TO SECTION 9-29 OF WSDOT STANDARD SPECIFICATIONS. SCHEDULE 80 PVC MAY BE USED IN LOCATIONS OTHER THAN ROADWAY CROSSINGS.

(STR LIGHT SPECS CONTINUED)

- JUNCTION BOXES (WHEN REQUIRED)**
JUNCTION BOXES SHALL BE INSTALLED AT LOCATIONS AS SHOWN ON THE PLANS. THEY WILL CONFORM TO WSDOT STANDARD PLAN J-40.10-02, TYPE 1. THEY SHALL BE LEVEL WITH THE SIDEWALK GRADE AND FIRMLY BEDDED TO PREVENT FUTURE SETTLING. JUNCTION BOXES ARE PREFERRED NOT TO BE INSTALLED IN THE SIDEWALK. THE COVER SHALL BE GALVANIZED AND GROUNDED. THE LETTERS "JT" SHALL BE ETCHED ON THE COVER. (SEE CITY STANDARD DETAIL NO. 01.05.01). IF THE JUNCTION BOX IS NOT IN THE SIDEWALK THEN IT SHALL HAVE A CONCRETE COLLAR. IF THE JUNCTION BOX IS IN THE SIDEWALK THEN IT SHALL HAVE A NON-SLIP SURFACE TREATMENT. SEE CITY STANDARD DETAIL NO. 01.05.01.
- CONDUCTORS, WIRES, ETC.**
WIRE CONDUCTORS FOR UNDERGROUND FEEDER RUNS AND FOR CIRCUITRY FROM THE IN-LINE FUSE IN THE POLES TO THE JUNCTION BOX SHALL BE 600 VOLT, SINGLE CONDUCTOR STRANDED COPPER AND INSULATED WITH USE GRADE POLYVINYL CHLORIDE COMPOUND (XLP) OR APPROVED EQUAL IN ACCORDANCE WITH THE INSULATED POWER CABLE ENGINEER'S ASSOCIATION SPECIFICATIONS. AN AWG NO. 8 GREEN INSULATED STRANDED COPPER WIRE WILL BE RUN TO THE SERVICE GROUND LUG ON EACH POLE. FEEDERS SHALL BE SIZED IN ACCORDANCE WITH THE NATIONAL ELECTRICAL CODE. WIRES INSIDE THE POLE BETWEEN BALLAST AND IN-LINE FUSES SHALL BE ROME 2C AWG 10 STRANDED POLE AND BRACKET WIRE OR APPROVED EQUAL. SPLICES WILL BE ALLOWED IN JUNCTION BOXES AND POLE BASES ONLY. NO MORE THAN 2 CONDUITS WILL BE ALLOWED INSIDE THE STREET POLE.
- FUSES**
LUMINAIRE FUSING AND ELECTRICAL CONNECTIONS AT LIGHT STANDARD BASES SHALL CONFORM TO SECTION 9-29.7 OF THE STATE OF WASHINGTON STANDARD SPECIFICATIONS AND AS SHOWN ON THE UNIFORM LUMINAIRE WIRING DETAIL IN THE APPENDIX. IN-LINE FUSE HOLDERS SHALL BE SEC MODEL 1791-SF WITH FNM-5 FUSES OR APPROVED EQUAL. (REFER TO CITY STANDARD DETAIL NO. 01.06.01)
- LUMINAIRES AND LAMPS**
RESIDENTIAL STREETS AND NEIGHBORHOOD COLLECTORS:
LEOTEK LED GCJ3-303MMV-40K-2R-GY-090-SC (54 WATT LED)

ARTERIALS AND COMMERCIAL COLLECTORS:
GE EVOLVE LED EERSL-0-23-C3-40-D-GRAY-VL-V1 (194 WATT LED)

THE CITY WILL ENERGIZE THE STREET LIGHTS WHEN A HOME IS OCCUPIED ADJACENT TO A STREET LIGHT OR IMMEDIATELY ACROSS THE STREET. AT THE DEVELOPER'S REQUEST, STREET LIGHTS MAY BE ENERGIZED PRIOR TO OCCUPANCY OF HOMES. HOWEVER, THE DEVELOPER OR BUILDER SHALL ASSUME FULL RESPONSIBILITY FOR ELECTRICAL POWER COSTS AND REPAIR COSTS DUE TO VANDALISM, THEFT, OR CONSTRUCTION.
- SAFE WIRING LABELS**
THE CONTRACTOR IS ADVISED THAT SAFE WIRING LABELS REQUIRED BY LABOR AND INDUSTRIES SHALL APPLY ON THIS PROJECT. (ELECTRICAL INSPECTION STICKER)
- GUARANTEE**
THE CONTRACTOR SHALL SURRENDER TO THE CITY OF PUYALLUP ANY GUARANTEE OR WARRANTY ACQUIRED BY HIM AS A NORMAL TRADE PRACTICE IN CONNECTION WITH THE PURCHASE OF ANY MATERIALS OR ITEMS USED IN THE CONSTRUCTION OF THE ILLUMINATION.
- LOCATION**
SEE CITY STANDARD SECTION 01.01 ROADWAY DESIGN.



NOTES:

- A METER SERVICE DISCONNECT IS REQUIRED FOR EACH BRANCH CIRCUIT. SEE CITY STANDARD DETAIL NO. 01.05.05
- INSTALLATION SHALL CONFORM TO NATIONAL ELECTRICAL CODE, WSDOT AND CITY STANDARDS.
- PHASING TAPE IS NOT ALLOWED.
- ALL WIRES SHALL BE INSTALLED IN CONDUIT AS SPECIFIED ABOVE.
- ALL SPLICES SHALL BE MADE IN A JUNCTION BOX. WIRE NUTS WILL NOT BE ALLOWED. SPLICES SHALL BE CENTERED AND ENCASED IN 3M SCOTCHCAST EPOXY KIT TYPE 82-A1, 82-B1, OR CITY APPROVED EQUAL. OTHER GEL TAP SPLICE KITS AND DIRECT BURIAL AND SUBMERSIBLE SPLICES TO BE ALLOWED IF APPROVED BY THE CITY.
- GROUND ROD COVER SHALL BE UTILITY VAULT #8V0-824 OR APPROVED EQUIVALENT.

CITY OF PUYALLUP

STREET LIGHT SPECIFICATIONS

DEVELOPMENT ENGINEERING and PUBLIC WORKS DEPARTMENTS

DATE APPROVED: 02/02/2026
CITY STANDARD: 01.05.01

CITY OF PUYALLUP

STREET LIGHT SPECIFICATIONS (CONT.)

DEVELOPMENT ENGINEERING and PUBLIC WORKS DEPARTMENTS

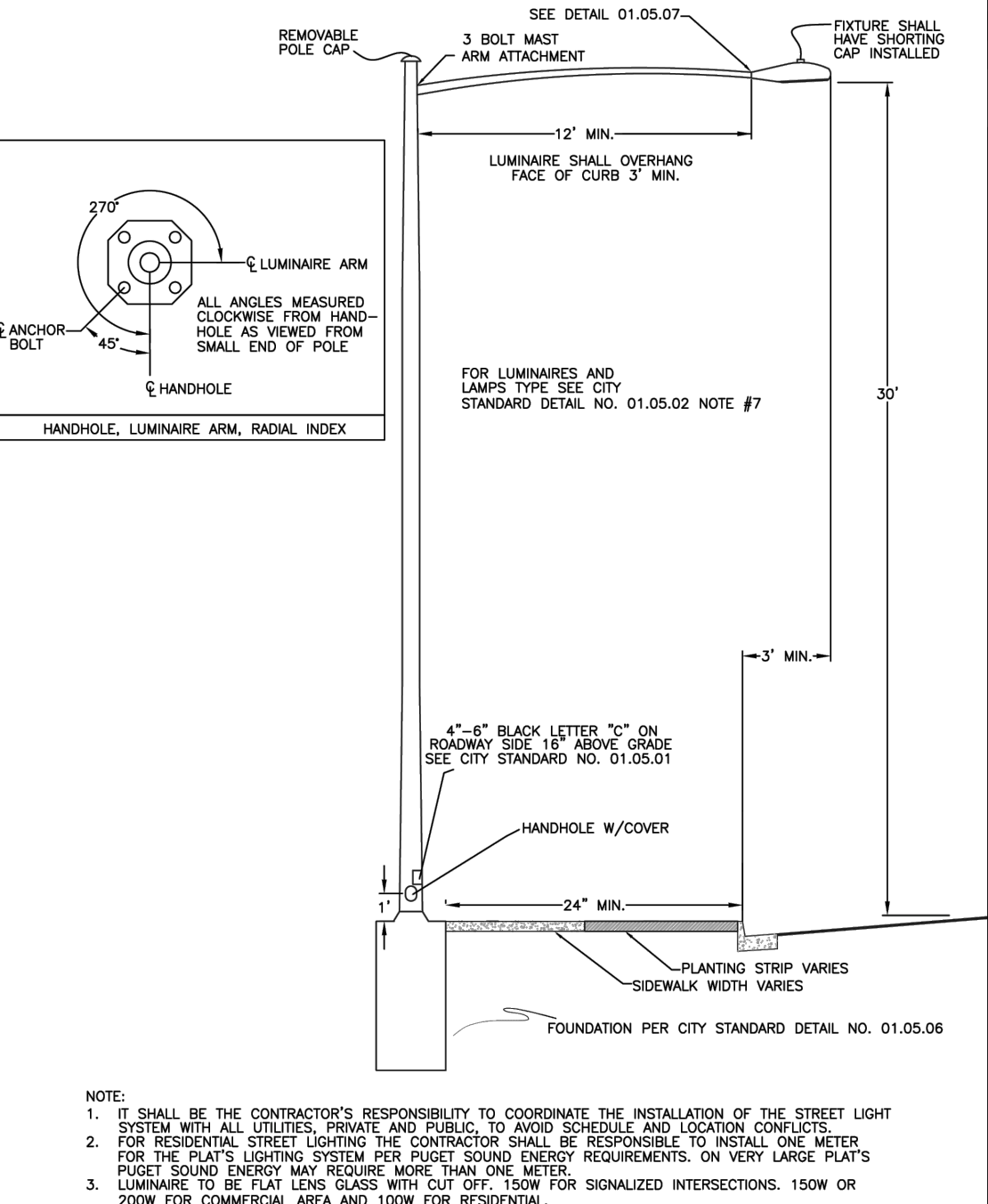
DATE APPROVED: 02/02/2026
CITY STANDARD: 01.05.02

CITY OF PUYALLUP

TYPICAL STREET LIGHT INSTALLATION

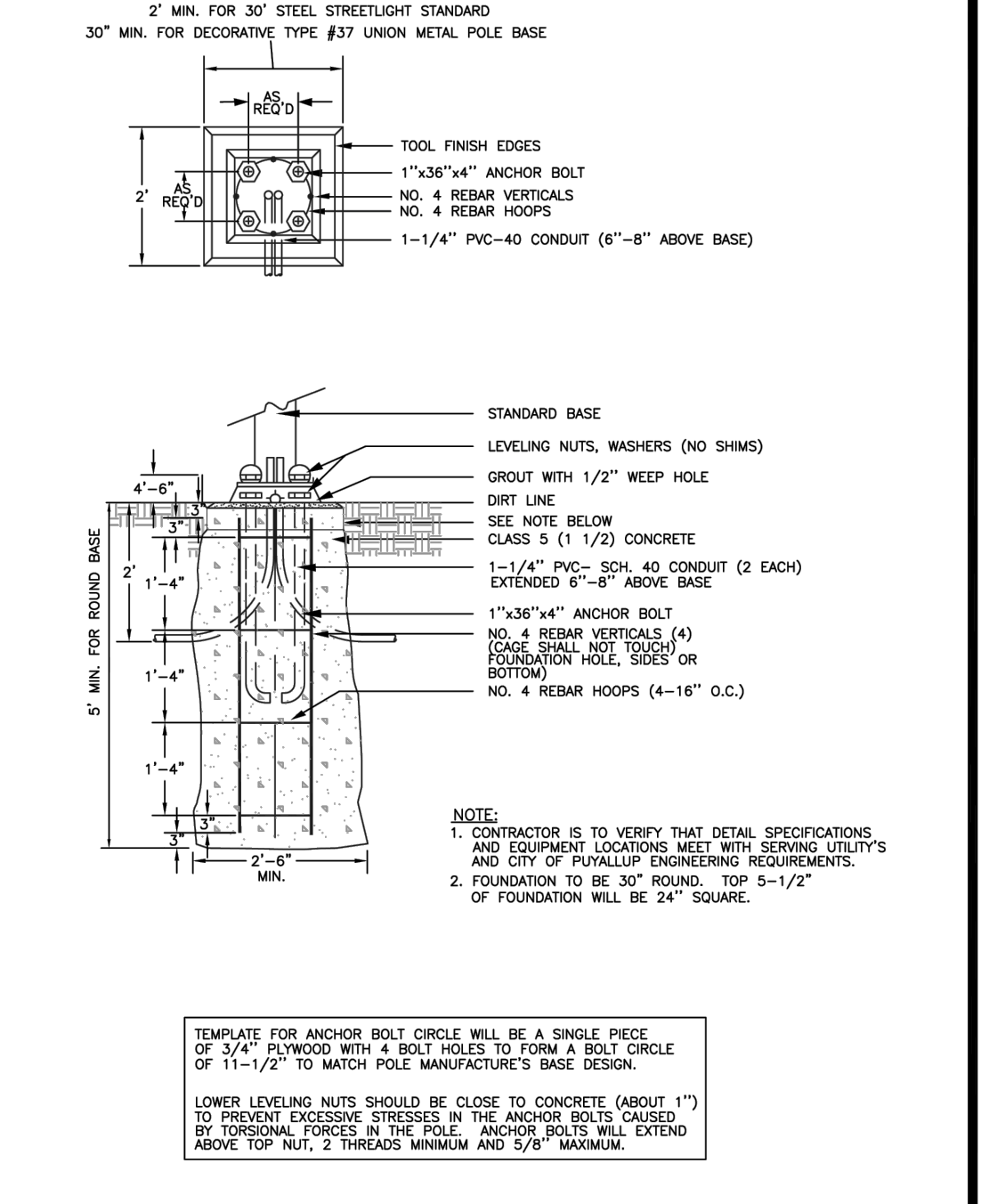
DEVELOPMENT ENGINEERING and PUBLIC WORKS DEPARTMENTS

DATE APPROVED: 02/02/2026
CITY STANDARD: 01.05.03



NOTE:

- IT SHALL BE THE CONTRACTOR'S RESPONSIBILITY TO COORDINATE THE INSTALLATION OF THE STREET LIGHT SYSTEM WITH ALL UTILITIES, PRIVATE AND PUBLIC, TO AVOID SCHEDULE AND LOCATION CONFLICTS.
- FOR RESIDENTIAL STREET LIGHTING THE CONTRACTOR SHALL BE RESPONSIBLE TO INSTALL ONE METER, FOR THE PLANT LIGHTING SYSTEM PER PUYALLUP SOUND ENERGY REQUIREMENTS. ON VERY LARGE PLANTS PUYALLUP SOUND ENERGY MAY REQUIRE MORE THAN ONE METER.
- LUMINAIRE TO BE FLAT LENS GLASS WITH CUT-OFF, 150W FOR SIGNALIZED INTERSECTIONS, 150W OR 200W FOR COMMERCIAL AREA AND 100W FOR RESIDENTIAL.



NOTE:

- CONTRACTOR IS TO VERIFY THAT DETAIL SPECIFICATIONS AND EQUIPMENT LOCATIONS MEET WITH SERVING UTILITIES AND CITY OF PUYALLUP ENGINEERING REQUIREMENTS.
- FOUNDATION TO BE 30" ROUND, TOP 5-1/2" OF FOUNDATION WILL BE 24" SQUARE.

CITY OF PUYALLUP

STREET LIGHT

DEVELOPMENT ENGINEERING and PUBLIC WORKS DEPARTMENTS

DATE APPROVED: 02/02/2026
CITY STANDARD: 01.05.04

CITY OF PUYALLUP

CONCRETE STREETLIGHT FOUNDATION TYPICAL

DEVELOPMENT ENGINEERING and PUBLIC WORKS DEPARTMENTS

DATE APPROVED: 02/02/2026
CITY STANDARD: 01.05.06

CITY OF PUYALLUP

JUNCTION BOX

DEVELOPMENT ENGINEERING and PUBLIC WORKS DEPARTMENTS

DATE APPROVED: 02/02/2026
CITY STANDARD: 01.06.01

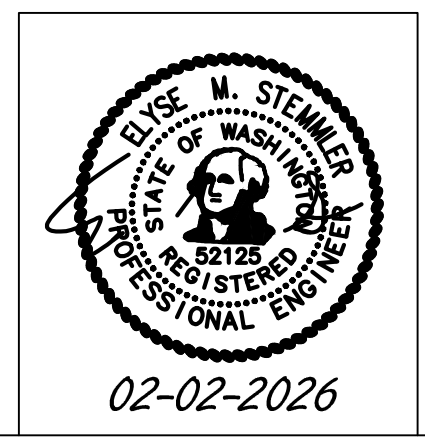
APPROVED

BY _____
CITY OF PUYALLUP
DEVELOPMENT ENGINEERING

DATE _____

NOTES: THIS APPROVAL IS VOID AFTER 180 DAYS FROM APPROVAL DATE.
THE CITY WILL NOT BE RESPONSIBLE FOR ERRORS AND/OR OMISSIONS ON THESE PLANS.
FIELD CONDITIONS MAY DICTATE CHANGES TO THESE PLANS AS DETERMINED BY THE DEVELOPMENT ENGINEERING MANAGER.

REVISION	DATE	BY



TENW CONTACT:

STELLA S. OH, P.E.
PROJECT MANAGER
STELLA@TENW.COM
206-412-6743


ISSUE DATE: 02-02-2026

JOB NO.: TENW #2026-026

DESIGNED BY: BL/SSO

DRAWN BY: BL

APPROVED BY: EMS



TENW

520 KIRKLAND WAY, SUITE 100, KIRKLAND, WA, 98033

RM HOMES
2913 5TH AVE NE, SUITE 201
PUYALLUP, WA 98372
JAMES@RMHOMES.COM
JAMES KERBY

**NORMANDY HEIGHTS
PUYALLUP, WA**

ILLUMINATION DETAILS

IL-03

SHEET:
3
OF
3