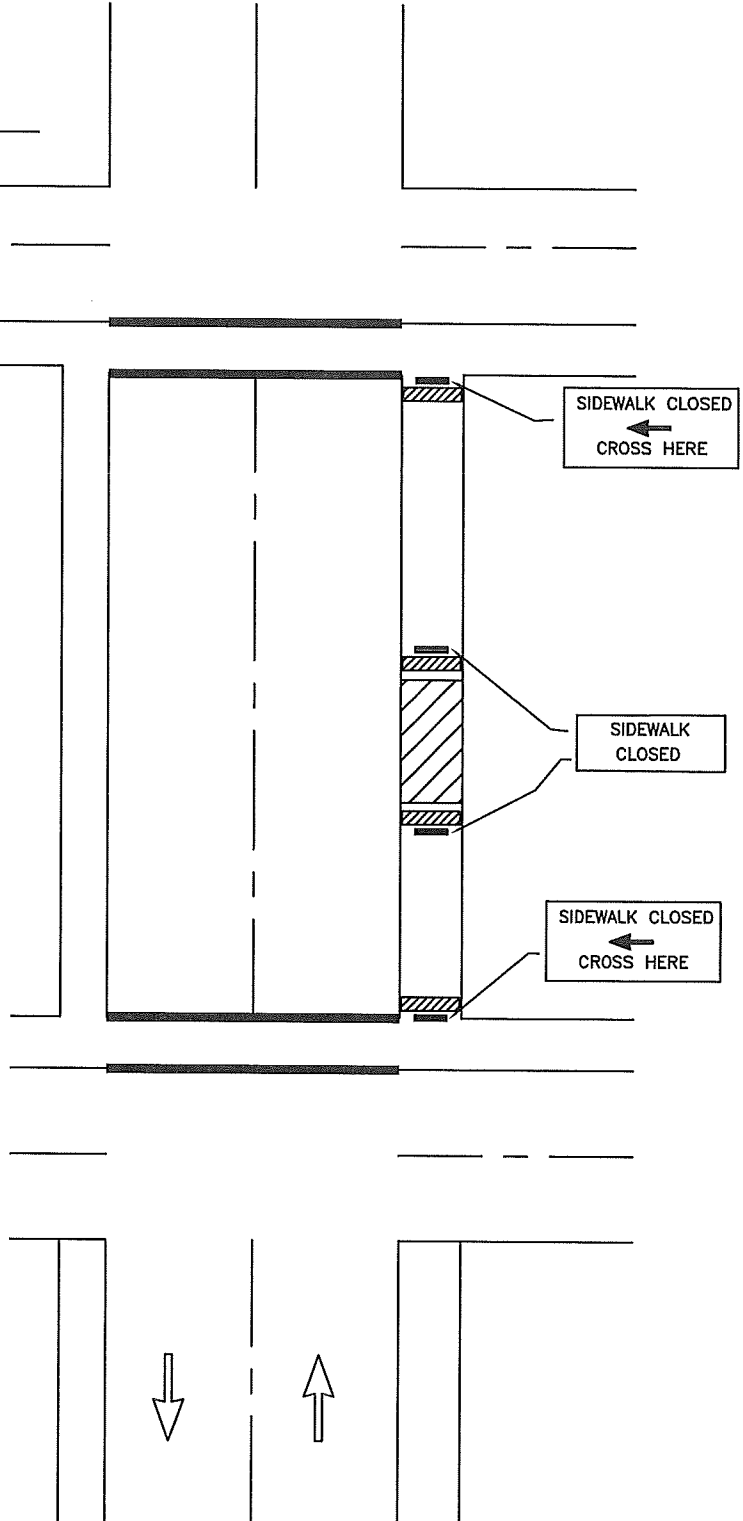


NAME OF STREET: Shaw Road

Site specific traffic control plans required to be submitted and approved prior to pre-con. Lane closures on Shaw Rd will require night work.

NAME OF STREET: Crystal Ridge



NOTES:

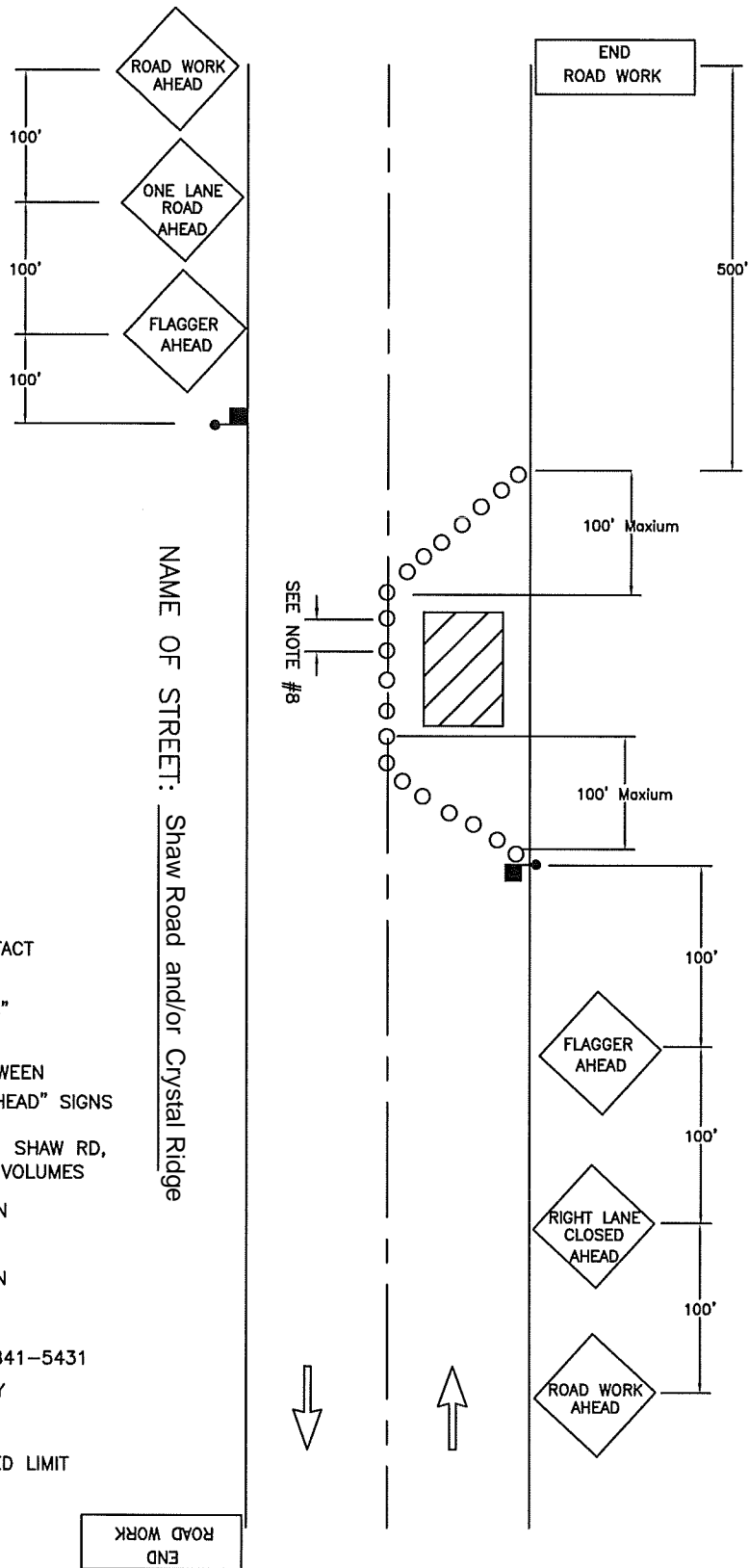
- 1 GIVE 24 HR NOTICE TO BUSINESS/RESIDENTS IMPACTED BY CLOSURE
- 2 "NO PARKING" EASELS MAY BE REQUIRED IN IMMEDIATE AREA OF WORK ZONE
- 3 CALL COMM CENTER DAY OF CLOSURE 841-5431
- 4 KEEP CLOSURE TO MINIMUM AMOUNT OF TIME AS POSSIBLE TO COMPLETE JOB
- 5 FLAGGERS MAYBE NEEDED TO ASSIST W/ CROSSING PEDESTRIANS NEAR SCHOOLS OR HIGH PEDESTRIAN USE AREAS



**CITY OF
PUYALLUP
TRAFFIC
ENGINEERING
DIVISION**

SIDEWALK CLOSURE

DRAWN J. HUNTER	PLOTTING SCALE NTS/ 1=1	DATE APPROVED 04-03	REVISED	TCP STANDARD
FILE NAME I:\DRAWINGS\PUBLIC WORKS\TRAFFIC\TCP	CHECKED BY M. FORD	REVISOR	NO. 6	



NOTES:

- 1 FOR TWO-WAY TRAFFIC WORK ZONES
- 2 FLAGGERS SHALL REMAIN IN RADIO CONTACT AT ALL TIMES
- 3 TRAFFIC CONTROL DEVICES SHALL BE 28" RETROREFLECTIVE CONES
- 4 USE "BE PREPARED TO STOP" SIGN BETWEEN "FLAGGER AHEAD" AND "LANE CLOSED AHEAD" SIGNS ON HIGH VOLUME ROADS, SUCH AS: 43RD AVE SE, 9TH ST SW, 5TH ST SW, SHAW RD, AND OTHER STREETS WITH COMPARABLE VOLUMES
- 5 SIGN SPACING SHALL BE 350 FEET WHEN SPEED LIMIT IS GREATER THAN 30 MPH
- 6 SIGN SPACING SHALL BE 100 FEET WHEN SPEED LIMIT IS 30 MPH OR LESS
- 7 CALL COMM CENTER DAY OF CLOSURE 841-5431
 - 7.1 CLOSURE FOR WEEKDAYS ONLY
 - 7.2 TIMES: 9:00 AM TO 3:00 PM
- 8 DISTANCE BETWEEN CONES EQUALS SPEED LIMIT IN UNITS OF FEET

END ROAD WORK

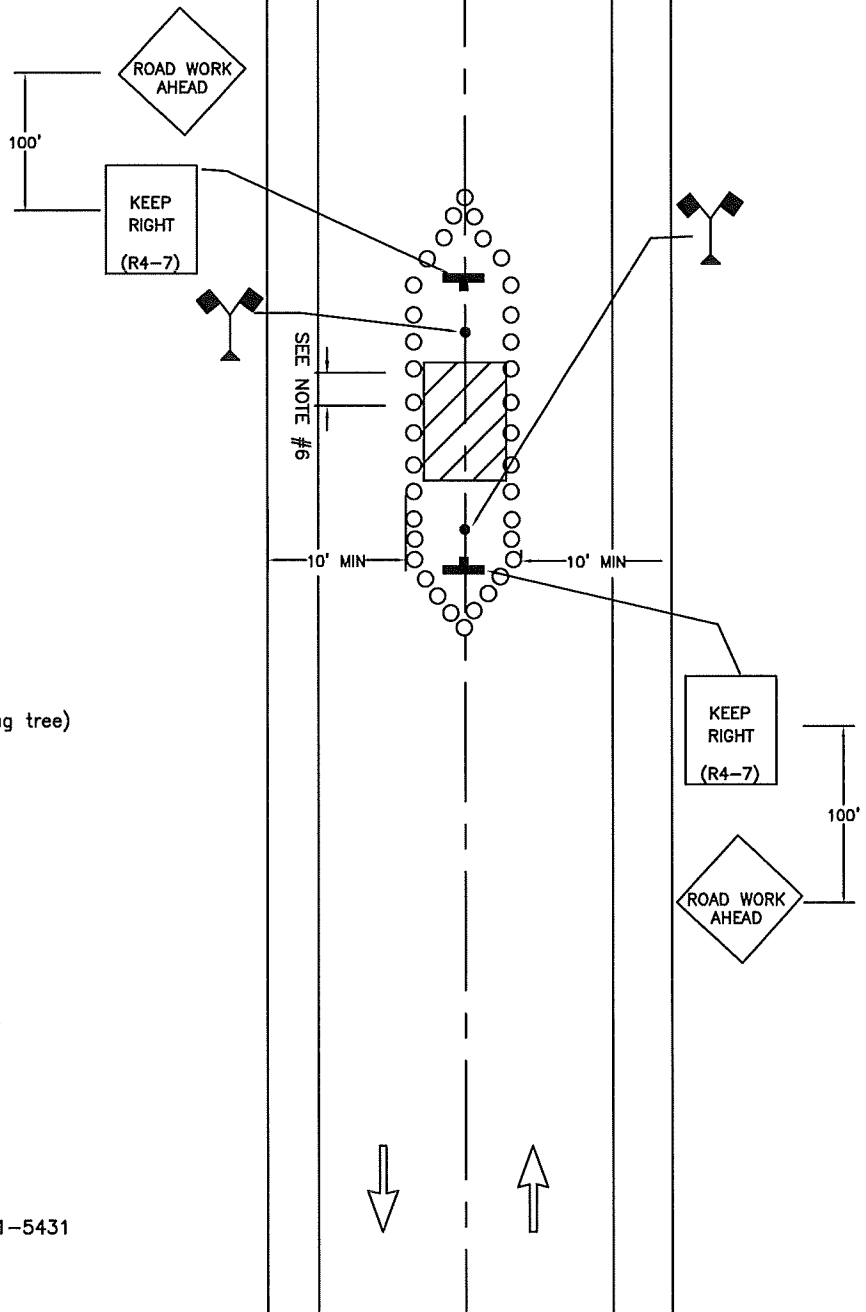


CITY OF PUYALLUP
TRAFFIC ENGINEERING
 DIVISION

LANE CLOSURE ON TWO-LANE ROAD USING FLAGGERS

DRAWN J. HUNTER	PLOTTING SCALE NTS/ 1=1	DATE APPROVED 04-03	REVISED 09-30-09	TCP STANDARD
FILE NAME I:\DRAWINGS\PUBLIC WORKS\TRAFFIC\TCP	CHECKED BY M. FORD	REVISED BY S. TANDLE	NO. 7	

NAME OF STREET: Shaw Road and/or Crystal Ridge



LEGEND



High-level warning device (Flag tree)

NOTES:

- 1 FOR LOW VOLUME WORK ZONES
- 2 TRAFFIC CONTROL DEVICES SHALL BE 28" RETROREFLECTIVE CONES
- 3 SIGN SPACING SHALL BE 100 FEET WHEN SPEED LIMIT IS 30 MPH OR LESS
- 4 SIGN SPACING SHALL BE 350 FEET WHEN SPEED LIMIT IS GREATER THAN 30 MPH
- 5 CALL COMM CENTER DAY OF CLOSURE 841-5431
 - 5.1 CLOSURE FOR WEEKDAYS ONLY
 - 5.2 TIMES: 9:00 AM TO 3:00 PM
- 6 DISTANCE BETWEEN CONES EQUALS SPEED LIMIT IN UNITS OF FEET



**CITY OF
PUYALLUP
TRAFFIC
ENGINEERING
DIVISION**

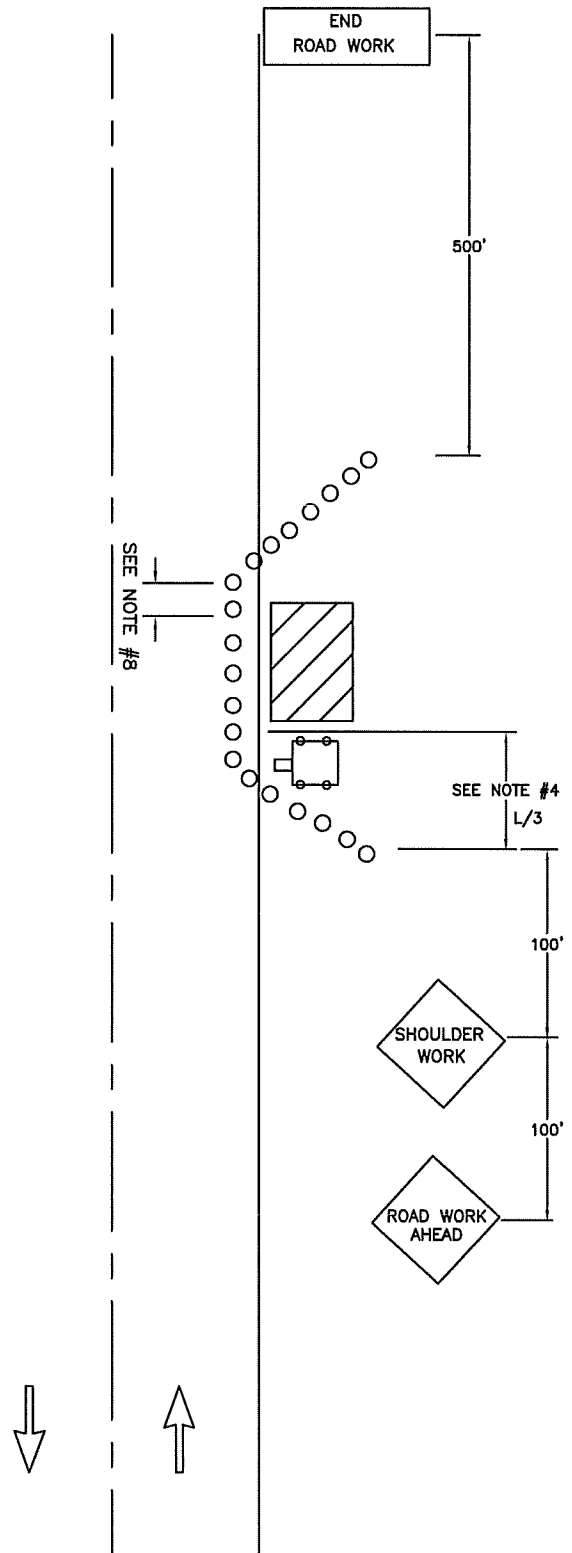
**WORK IN CENTER OF
LOW-VOLUME ROAD**

DRAWN J. HUNTER	PLOTTING SCALE NTS/ 1=1	DATE APPROVED 04-03	REVISED 09-30-09	TCP STANDARD
FILE NAME I:\DRAWINGS\PUBLIC WORKS\TRAFFIC\TCP	CHECKED BY M. FORD	REVISED BY S. TANDLE	NO. 8	

NAME OF STREET: Shaw Road

NOTES:

- 1 FOR SHOULDER WORK ZONES
- 2 VEHICLE TO PROTECT WORKZONE
- 3 TRAFFIC CONTROL DEVICES SHALL BE 28" RETROREFLECTIVE CONES
- 4 TAPER LENGTH EQUALS WIDTH OF OFFSET
TIMES SPEED LIMIT SQUARED DIVIDED BY 60
$$L = \frac{WS^2}{60}$$
- 5 SIGN SPACING SHALL BE 100 FEET WHEN SPEED LIMIT IS 30 MPH OR LESS
- 6 SIGN SPACING SHALL BE 350 FEET WHEN SPEED LIMIT IS GREATER THAN 30 MPH
- 7 CALL COMM CENTER DAY OF CLOSURE 841-5431
7.1 CLOSURE FOR WEEKDAYS ONLY
- 8 DISTANCE BETWEEN CONES EQUALS SPEED LIMIT IN UNITS OF FEET
9. TRAVEL LANE WIDTH MUST BE 11'(FT) MINIMUM



**CITY OF
PUYALLUP
TRAFFIC
ENGINEERING
DIVISION**

SHOULDER CLOSURE

DRAWN J. HUNTER	PLOTTING SCALE NTS/ 1=1	DATE APPROVED 04-03	REVISED 02/10/11	TCP STANDARD
FILE NAME I:\DRAWINGS\PUBLIC WORKS\TRAFFIC\TCP	CHECKED BY M. FORD	REVISED BY S. TANDLE	NO. 11	