

SIGN SPACING = X (1)

TYPE OF ROADWAY	POSTED SPEED	SIGN SPACING (FT)
RURAL ROADS AND URBAN ARTERIALS	45 MPH	500 ±
RURAL ROADS AND URBAN ARTERIALS	35 / 40 MPH	350 ±
RURAL ROADS, URBAN ARTERIALS, RESIDENTIAL, AND BUSINESS DISTRICTS	25 / 30 MPH	200 ± (2)

(1) ALL SPACING MAY BE ADJUSTED TO ACCOMMODATE INTERSECTIONS AND DRIVEWAYS.
 (2) THIS SPACING MAY BE REDUCED IN URBAN AREAS TO FIT ROADWAY CONDITIONS.

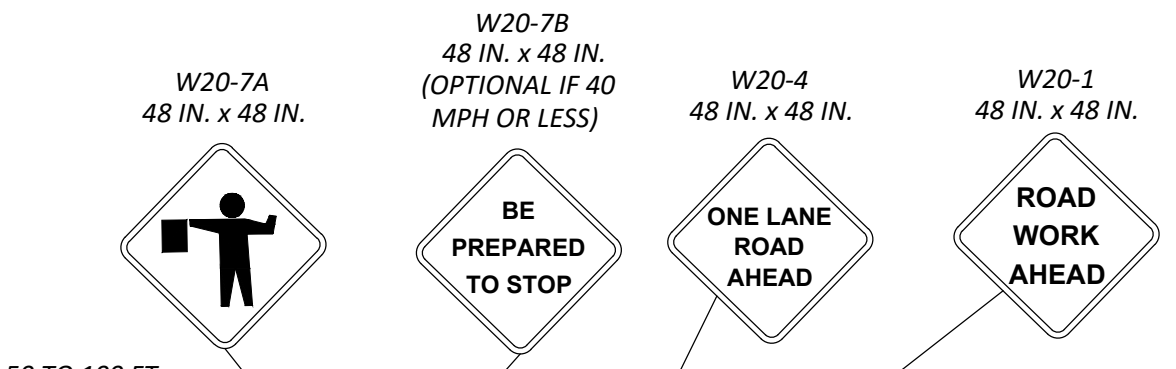
BUFFER DATA (B, R)

LONGITUDINAL BUFFER SPACE = B

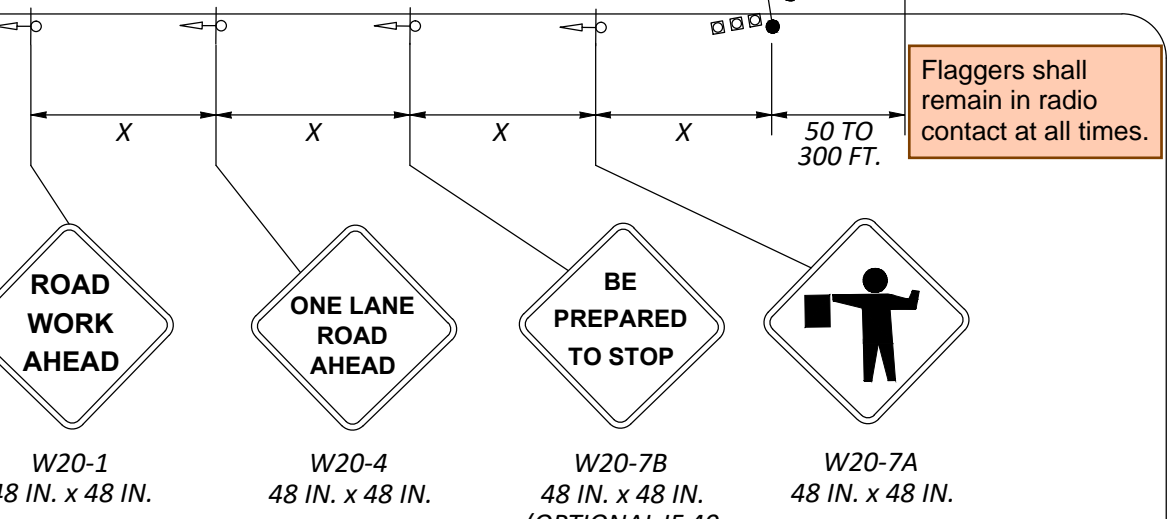
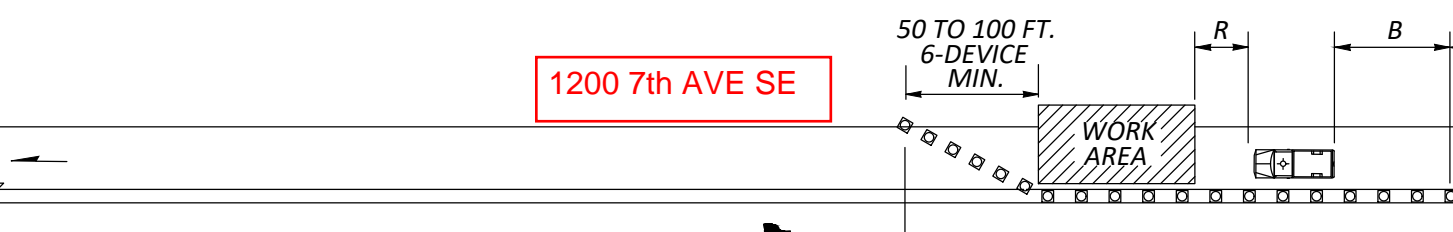
MPH	25	30	35	40	45
LENGTH (FT)	155	200	250	305	360

BUFFER VEHICLE ROLL AHEAD DISTANCE = R

TRANSPORTABLE ATTENUATOR MINIMUM HOST VEHICLE WEIGHT 15,000 LBS. THE MAXIMUM WEIGHT SHALL BE IN ACCORDANCE WITH THE MANUFACTURER'S RECOMMENDATION.	30 FEET MIN. TO 100 FEET MAX.
PROTECTIVE VEHICLE MAY BE A WORK VEHICLE STRATEGICALLY LOCATED TO SHIELD THE WORK AREA.	NO SPECIFIED DISTANCE REQUIRED



ROAD WORK ALLOWED:
 Monday - Friday
 9AM - 3PM
 Call communications center at 253-287-4456 on day of work. Request a job start inspection through the CityView portal.
 The City-issued permit packet shall be posted at the job site and available to inspectors at all times.



Flaggers shall remain in radio contact at all times.

CHANNELIZATION DEVICE SPACING (FT)

POSTED SPEED (MPH)	TAPER	TANGENT
35 - 45	30	60
25 - 30	20	40

MINIMUM LANE CLOSURE TAPER LENGTH = L (FT)

LANE WIDTH (FT)	POSTED SPEED (MPH)				
	25	30	35	40	45
10	105	150	205	270	450
11	115	165	225	295	495
12	125	180	245	320	540

- NOTES:**
- 1) ALL SIGNS ARE BLACK ON ORANGE.
 - 2) EXTEND DEVICE TAPER AT L/3 ACROSS SHOULDER, 3 DEVICES MINIMUM.
 - 3) IF A SIGNAL IS PRESENT, IT SHALL BE SET TO "RED FLASH MODE" DURING FLAGGING OPERATIONS.
 - 4) NIGHT WORK REQUIRES ADDITIONAL ROADWAY LIGHTING AT FLAGGING STATIONS. SEE THE STANDARD SPECIFICATIONS FOR ADDITIONAL DETAILS.
 - 5) MAINTAIN MINIMUM 11-FOOT LANES AT ALL TIMES.
 - 6) SEE SPECIAL PROVISIONS FOR WORK HOUR RESTRICTIONS.
 - 7) PROTECTIVE VEHICLE REQUIRED WHERE POSTED SPEED LIMIT IS 45 MPH. OTHERWISE, USED AT CONTRACTOR'S DISCRETION AND EXPENSE.
- LANE CLOSURES REQUIRE 72-HOUR PUBLIC NOTICE VIA PCMS, UNLESS OTHERWISE APPROVED BY THE ENGINEER. COORDINATE PCMS MESSAGE WITH PIERCE COUNTY TRAFFIC ENGINEERING.

- LEGEND**
- FLAGGING STATION
 - TEMPORARY SIGN LOCATION
 - CHANNELIZING DEVICES
 - PROTECTIVE VEHICLE (SEE NOTE 7)

Puyallup construction restriction zones and routes shall be in effect during special events in downtown Puyallup or at the Washington State Fair. No work is allowed in the public right-of-way as defined by the Puyallup "Construction Restriction Zone & Routes Map."

(NOT TO SCALE)