


# Bradley Heights Apartments

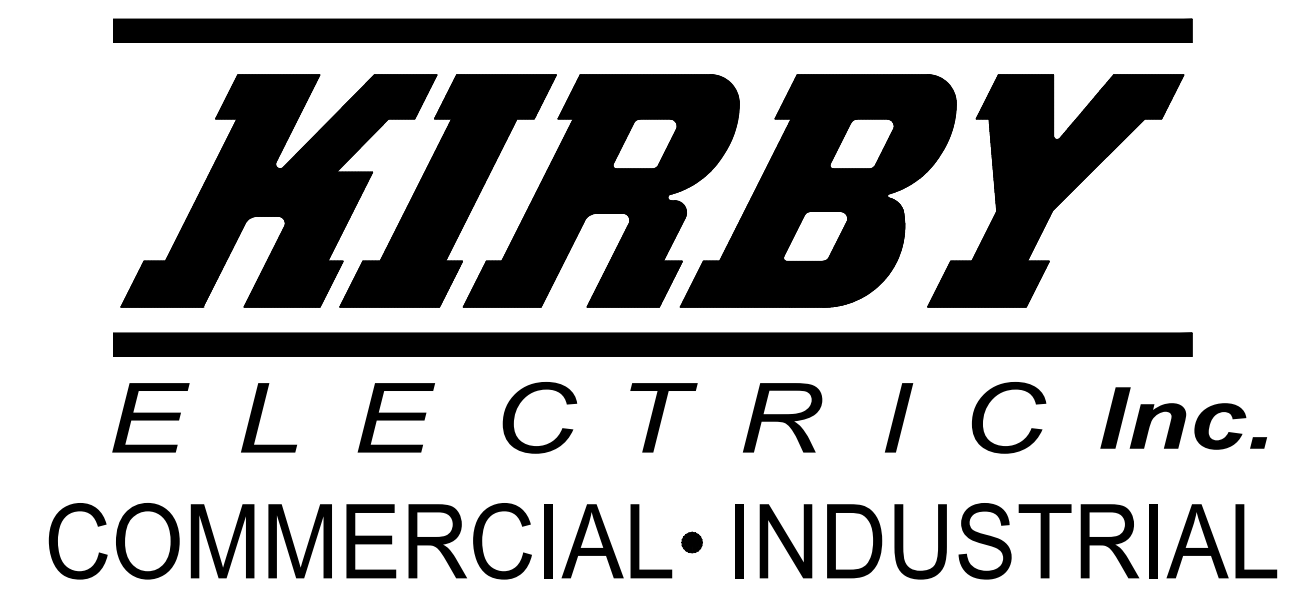
Building J

## FIRE ALARM AND DETECTION SYSTEM

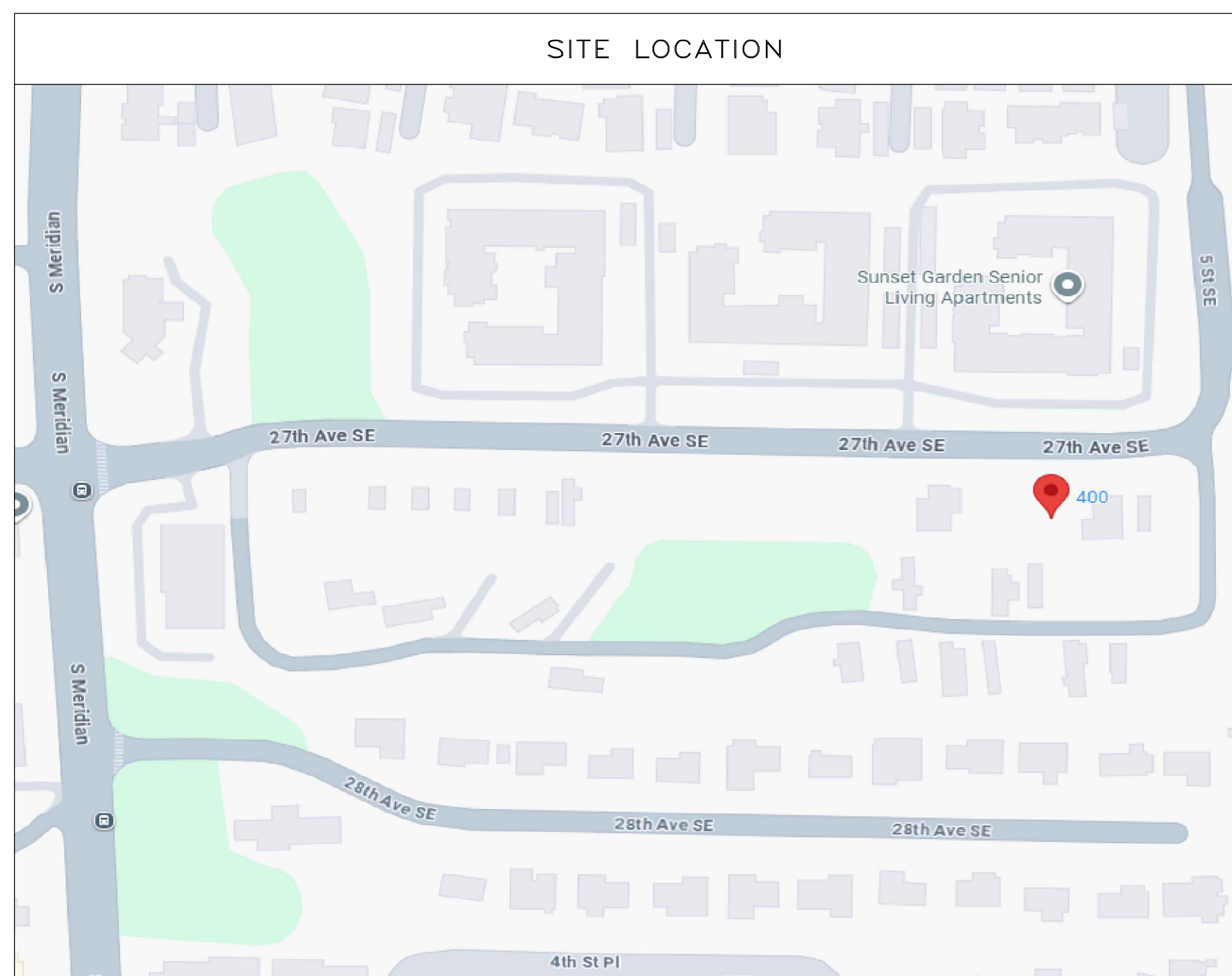
**\*\*UL CERTIFICATION AND SERVICE CONTRACT TO BE ISSUED TO OWNER, BY CONVERGINT TECHNOLOGIES , UPON COMPLETION OF INSTALLATION AND INSPECTION OF SYSTEM\*\***

### PROJECT SCOPE

- |   |  |
|---|--|
| <ol style="list-style-type: none"> <li>1. PROVIDE AND INSTALL NEW SILENT KNIGHT 6808 FIRE ALARM CONTROL PANEL AND HONEYWELL HPF-PS10 REMOTE POWER SUPPLY FOR OCCUPANT NOTIFICATION.</li> <li>2. PROVIDE AND INSTALL 1 STROBE ONLY NOTIFICATION APPLIANCES.</li> <li>3. PROVIDE AND INSTALL 36 LOW FREQUENCY SOUNDER NOTIFICATION APPLIANCES.</li> <li>4. PROVIDE AND INSTALL 11 HORN/STROBE NOTIFICATION APPLIANCES &amp; 1 WATERFLOW BELL.</li> <li>5. PROVIDE AND INSTALL 15 MANUAL PULL STATIONS</li> <li>6. PROVIDE AND INSTALL 1 SMOKE DETECTOR FOR FACP AND PS10</li> </ol> | <ol style="list-style-type: none"> <li>7. PROVIDE AND INSTALL 2 DUAL-INPUT MODULES.</li> <li>8. PROVIDE AND INSTALL A HONEYWELL HW-AV-LTE-M CELLULAR COMMUNICATOR.</li> <li>9. PROVIDE AND INSTALL 10 HEAT DETECTORS. </li> </ol> |
|---|--|

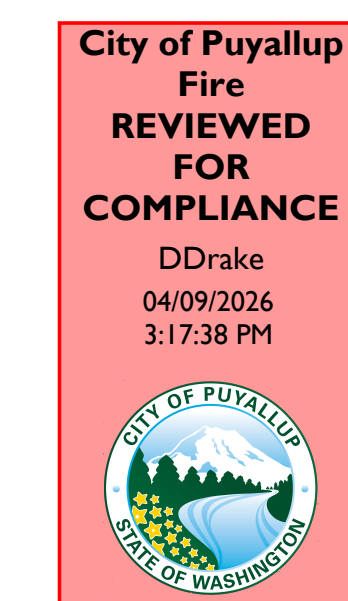
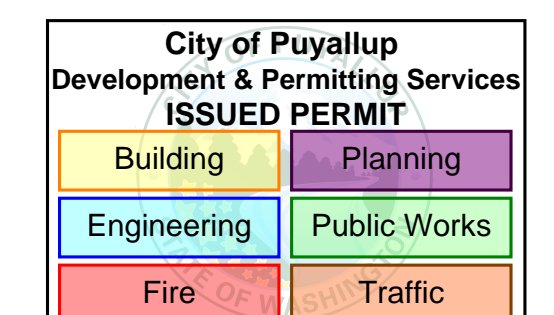


FIRE ALARM SHEET INDEX	
PAGE	SHEET TITLE
EF0.00	COVER SHEET
EF0.01	FIRE ALARM DETAILS
EF0.02	PANEL DETAILS
EF0.03	DEVICE DETAILS
EF1.01	ONE-LINE RISER DIAGRAM
EF2.01	FIRE ALARM PANEL CALCULATIONS
EF3.00	BASEMENT FIRE ALARM PLAN
EF3.01	LEVEL 1 & 2 FIRE ALARM PLAN
EF3.02	LEVEL 3 & ROOF FIRE ALARM PLAN



APPLICABLE CODES & STANDARDS
2022 NATIONAL FIRE ALARM & SIGNALING CODE NFPA72 2023 NATIONAL ELECTRICAL CODE (NEC) NFPA70 2021 INTERNATIONAL FIRE CODE (IFC) WITH WASHINGTON STATE AMENDMENTS 2021 INTERNATIONAL BUILDING CODE (IBC) WITH WASHINGTON STATE AMENDMENTS
OCCUPANCY & BUILDING
OCCUPANCY : R-2 USE : APARTMENT BUILDING AREA : 25,991 S.F.

PROJECT CONTACTS		
PROJECT MANAGER	DMON ADAMS	dmona@kirbyelectric.com
FOREMAN	---	---
DESIGNER	ANATOLIY KINAKH	anatoliyk@kirbyelectric.com
GENERAL PROJECT INFORMATION	TIM KUDELA	timk@kirbyelectric.com
TECHNICIAN SCHEDULING	ANDRACO DICKSON	andracod@kirbyelectric.com




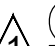
THE APPROVED CONSTRUCTION PLANS AND ALL ENGINEERING MUST BE POSTED ON THE JOB AT ALL INSPECTIONS IN A VISIBLE AND READILY ACCESSIBLE LOCATION.

Approval of submitted plans is not an approval of omissions or oversight by this office or noncompliance with any applicable regulations of local government. The contractor is responsible for making sure that the building complies with all applicable building codes and regulations of the local government.



Bradley Heights  
Apartments - Bldg J  
202 27th Ave SE, BLDG J, PUYALLUP, WA 98374

### REVISIONS:

-  (2026-02-20) INITIAL REVIEW SET
-  (2026-03-26) PERMIT CORRECTIONS PRFA20260236

SHEET NUMBER: EF0.00

SHEET TITLE: COVER SHEET

PLOT DATE: 03-26-26

DESIGNED BY: A.K.

JOB NUMBER: 25-058

DEVICE LEGEND				
SYMBOL	QUANTITY	MANUFACTURER	PART NO	DESCRIPTION
FACP	1	SILENT KNIGHT	6808	INTELLIGENT FIRE ALARM CONTROL PANEL WITH COMMUNICATOR
PS10	1	HONEYWELL	HPF-PS10	10.0 A, 120 VAC REMOTE CHARGER POWER SUPPLY IN A LOCKABLE, METAL ENCLOSURE
CELL	1	HONEYWELL	HW-AV-LTE-M	DUAL-PATH COMMUNICATOR WITH ENCLOSURE, INCLUDES ANTENNA
M2	2	SILENT KNIGHT	SK-MONITOR-2	DUAL MONITORING MODULE
F	15	SILENT KNIGHT	SK-PULL-DA	DUAL ACTION PULL STATION
Ⓢ	1	SYSTEM SENSOR	SS-PHOTO WB300-6	WHITE, ADDRESSABLE PHOTOELECTRIC DETECTOR, STANDARD BASE
Ⓢ	10	SYSTEM SENSOR	SS-HEAT WB300-6	INTELLIGENT FIXED TEMPERATURE THERMAL DETECTOR, STANDARD BASE
Ⓢ	1	SYSTEM SENSOR	SWLED	STROBE, WALL, WHITE
Ⓢ WP	9	SYSTEM SENSOR	P2GRKLED	2-WIRE, COMPACT HORN STROBE, WALL, RED, OUTDOOR
Ⓢ LF	2	SYSTEM SENSOR	P2WH-LF	2-WIRE LOW FREQUENCY SOUNDER STROBE, HIGH CD, WHITE
Ⓢ LF	36	SYSTEM SENSOR	HW-LF	LOW FREQUENCY SOUNDER, WHITE
Ⓢ	1	SYSTEM SENSOR	SSM24-10	ALARM BELL 10" 24VDC, RED
Ⓢ	69	GENERIC	JUNCTION BOX	
Ⓢ	1	SPACE AGE ELECTRONICS	E120V-GT	HYBRID SURGE PROTECTION DEVICE
Ⓢ	1	SPACE AGE ELECTRONICS	SSU00685	FIRE ALARM DOCUMENT CABINET W/8GB USB DRIVE (ACE-11), RED WITH CUSTOM LOGO
N/A	2	POWER-SONIC	PS-12180F2	12V 18AH BATTERY FOR FACP
N/A	2	POWER-SONIC	PS-1280F2	12V 8AH BATTERY FOR POWER SUPPLY
<b>ADDITIONAL ASSEMBLY COMPONENTS AND HARDWARE</b>				
	1	HONEYWELL	HPF-PS10 MAIN BOARD	FIRE ALARM POWER SUPPLY MAIN BOARD
	1	SILENT KNIGHT	6808 MAIN BOARD	MAIN BOARD

### GENERAL NOTES

- FIRE ALARM SYSTEM IS POWER LIMITED.
- ALL RACEWAYS MUST BE FREE OF MOISTURE.
- REFER TO DATA SHEETS FOR PROPER TYPE AND SIZES OF REQUIRED DEVICE MOUNTING ELECTRICAL BOXES.
- AC VOLTAGE IS NOT PERMITTED IN THE SAME RACEWAY AS FIRE ALARM WIRING.
- UNRELATED (NON-FIRE ALARM) WIRE SHALL NOT BE IN THE SAME RACEWAY AS FIRE ALARM WIRE.
- ALL CONTRACTOR FIELD WIRING MUST ENTER ALARM CONTROL PANEL BACKBOX FOLLOWING POWER-LIMITING AND NON-POWER-LIMITING WIRING REQUIREMENTS. REFER TO INSTALLATION INSTRUCTIONS FOR MORE INFORMATION.
- ZONE CIRCUITS AND SIGNAL CIRCUITS ARE ELECTRICALLY SUPERVISED. BRANCH CIRCUITS SHALL BE LOOPED TO MAINTAIN INTEGRITY OF SUPERVISED CIRCUITS. T-TAPPING OF ZONE AND SIGNAL CIRCUITS IS NOT PERMITTED.
- REFER TO FACP MODULE DIAGRAMS, INCLUDED WITH FACP, FOR SPECIFICATIONS AND INFORMATION ON INDIVIDUAL PANEL MODULES.
- ALL FIRE ALARM WIRING SHALL TEST FREE OF OPENS, SHORTS, AND GROUNDS.
- ALL WIRING SHALL BE LABELED AND TAGGED.
- ALL WIRING SHALL MEET ALL APPLICABLE NATIONAL ELECTRICAL CODE ARTICLES FOR FIRE ALARM AND LOW-VOLTAGE WIRING.
- DO NOT USE FIRE ALARM CABINET AS TERMINAL CABINET.

FIRE ALARM SYSTEM DESIGNED BY: KIRBY ELECTRIC INC. AUBURN, WA 253-859-2000

FIRE ALARM SYSTEM INSTALLED BY: KIRBY ELECTRIC INC. AUBURN, WA

EQUIP. FOR FIRE ALARM SYSTEM SUPPLIED BY: SILENT KNIGHT INC. NORTHFORD, CT

WA STATE ELECTRICAL CONTRACTORS NUMBER: KIRBYEI809MZ

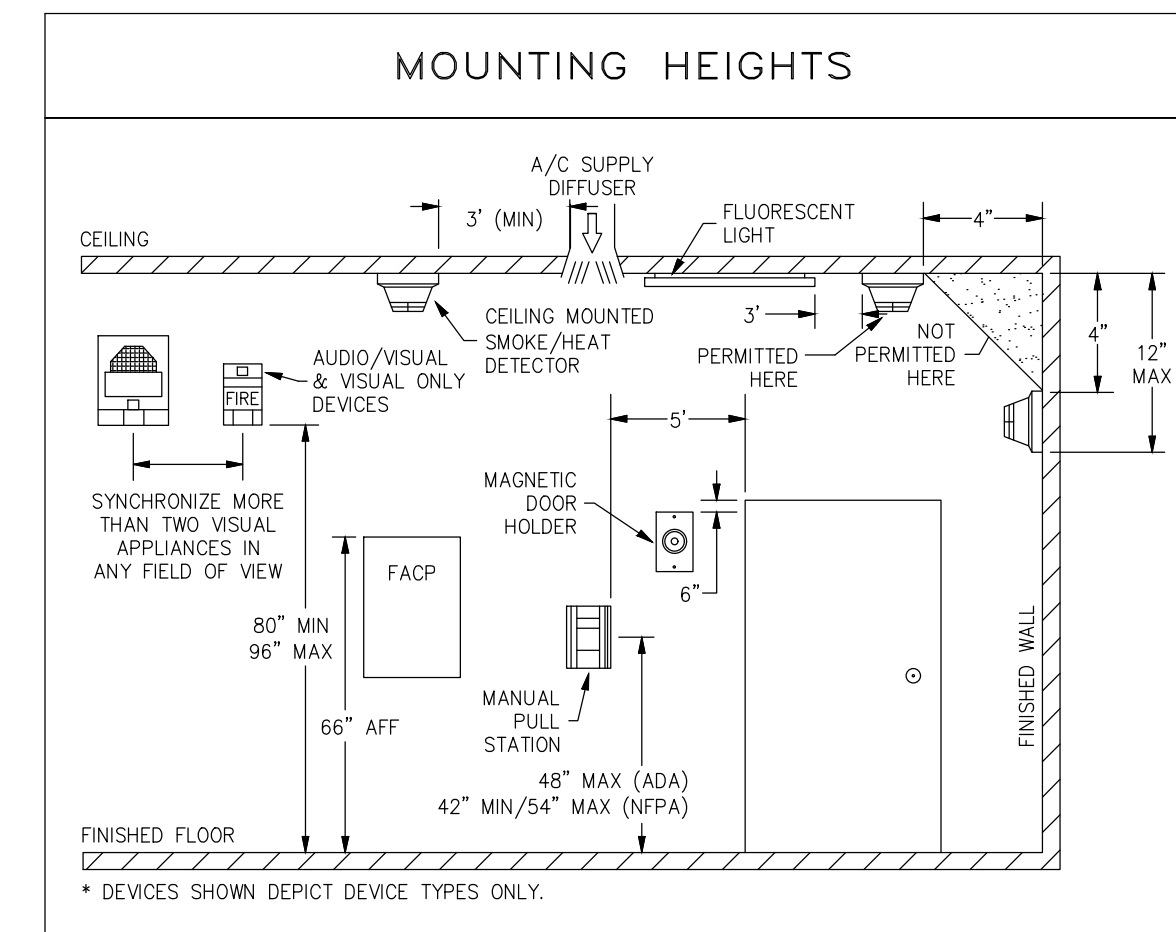
\* THESE DRAWINGS DO NOT SUPERSEDE THE CONTRACT DRAWINGS AND SPECIFICATIONS. THEY ARE INTENDED AS A SUPPLEMENT ONLY AND MUST BE USED IN CONJUNCTION WITH THE CONTRACT DOCUMENTS. THEY DO NOT MODIFY THE CONTRACTORS OBLIGATIONS TO CONFORM TO THE PROJECTS ORIGINAL DESIGN CRITERIA.

### CODE INFORMATION

**BUILDING CODE**  
2021 INTERNATIONAL BUILDING CODE (B) WITH WASHINGTON STATE AMENDMENTS  
2020 WASHINGTON STATE ENERGY CODE

**NATIONAL FIRE PROTECTION ASSOCIATION**  
2022 NATIONAL FIRE ALARM CODE (NFPA 72)  
2023 NATIONAL ELECTRICAL CODE (NFPA 70)  
2021 INTERNATIONAL FIRE CODE (IFC) WITH WASHINGTON STATE AMENDMENTS

**OCCUPANCY CLASSIFICATIONS**  
- R-2



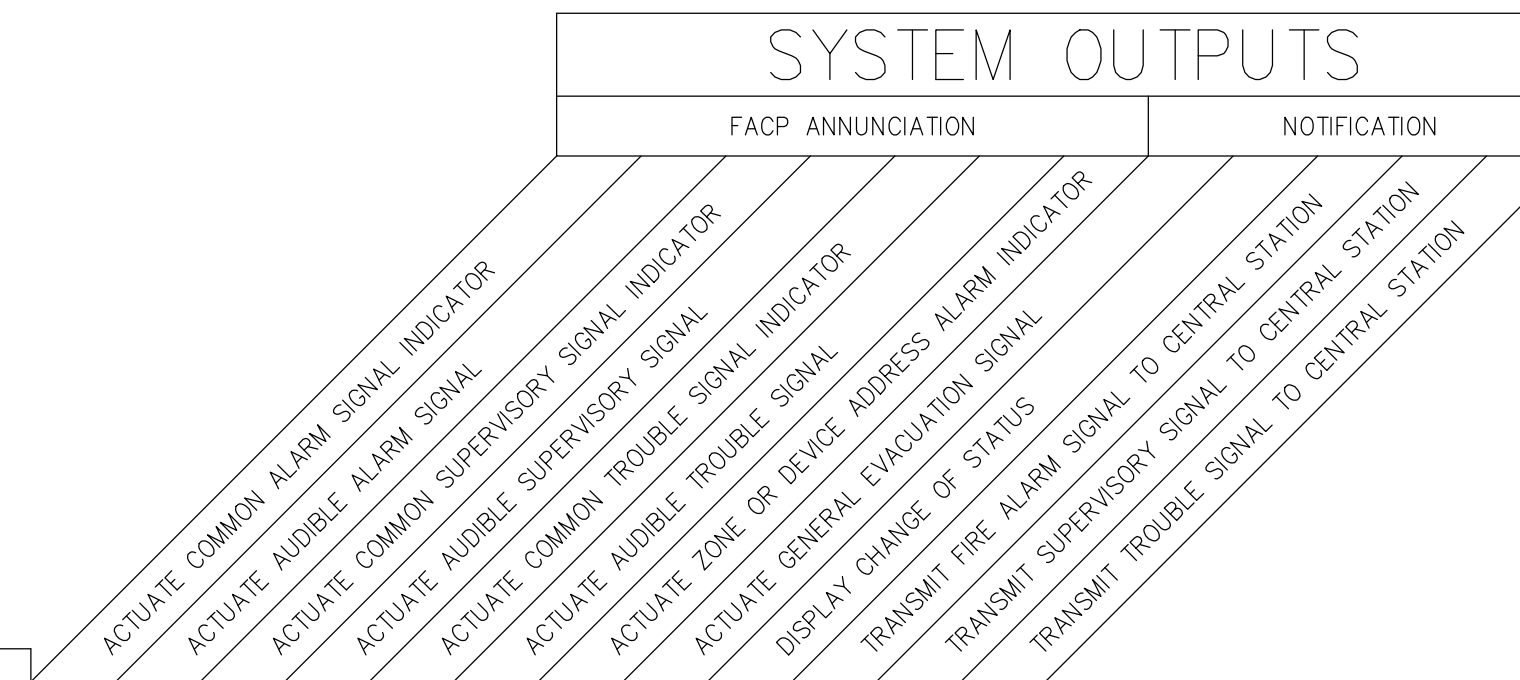
### DEVICE HEIGHT SCHEDULE

DEVICE	HEIGHT
OUTDOOR HORN/STROBE	96"
HORN/STROBE	80"
PULL STATION	48"
FIRE ALARM CONTROL PANEL	60"
POWER SUPPLY	60"
BELL	96"
ANNUNCIATOR	60"

### SYSTEM INPUTS

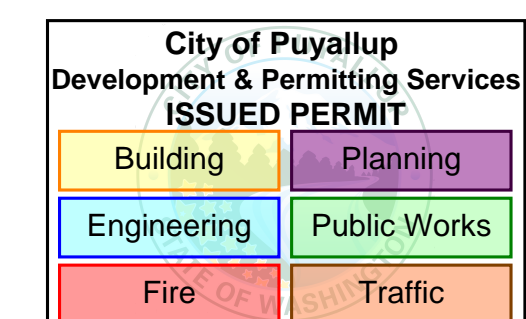
	A	B	C	D	E	F	G	H	I	J	K	L		
1 FIRE ALARM SYSTEM AC POWER FAILURE					●	●							●	1
2 FIRE ALARM SYSTEM LOW BATTERY					●	●							●	2
3 OPEN CIRCUIT					●	●							●	3
4 GROUND FAULT					●	●							●	4
5 NOTIFICATION APPLIANCE CIRCUIT SHORT					●	●							●	5
6 BUILDING MANUAL PULL STATIONS	●	●					●	●	●	●				6
7 AREA HEAT DETECTORS	●	●					●	●	●	●				7
8 AREA SMOKE DETECTORS	●	●					●	●	●	●				8
9 SPRINKLER TAMPER SWITCH			●	●							●			9
10 SPRINKLER WATER FLOW IN BUILDING	●	●					●	●	●	●				10
11 SPRINKLER WATER FLOW IN ELEV EQUIP RM OR SHAFT	●	●					●	●	●	●				11

\*NOT ALL FUNCTIONS ARE USED ON ALL SYSTEMS.



### FIRE ALARM SYSTEM MATRIX

SCALE: N.T.S.



# Bradley Heights Apartments - Bldg J

202 27th AVE SE, BLDG J, PUYALLUP, WA 98374

REVISIONS:

Ⓢ (2026-02-20) INITIAL REVIEW SET

Ⓢ (2026-03-26) PERMIT CORRECTIONS PRFA20260236

SHEET NUMBER: EFO.01

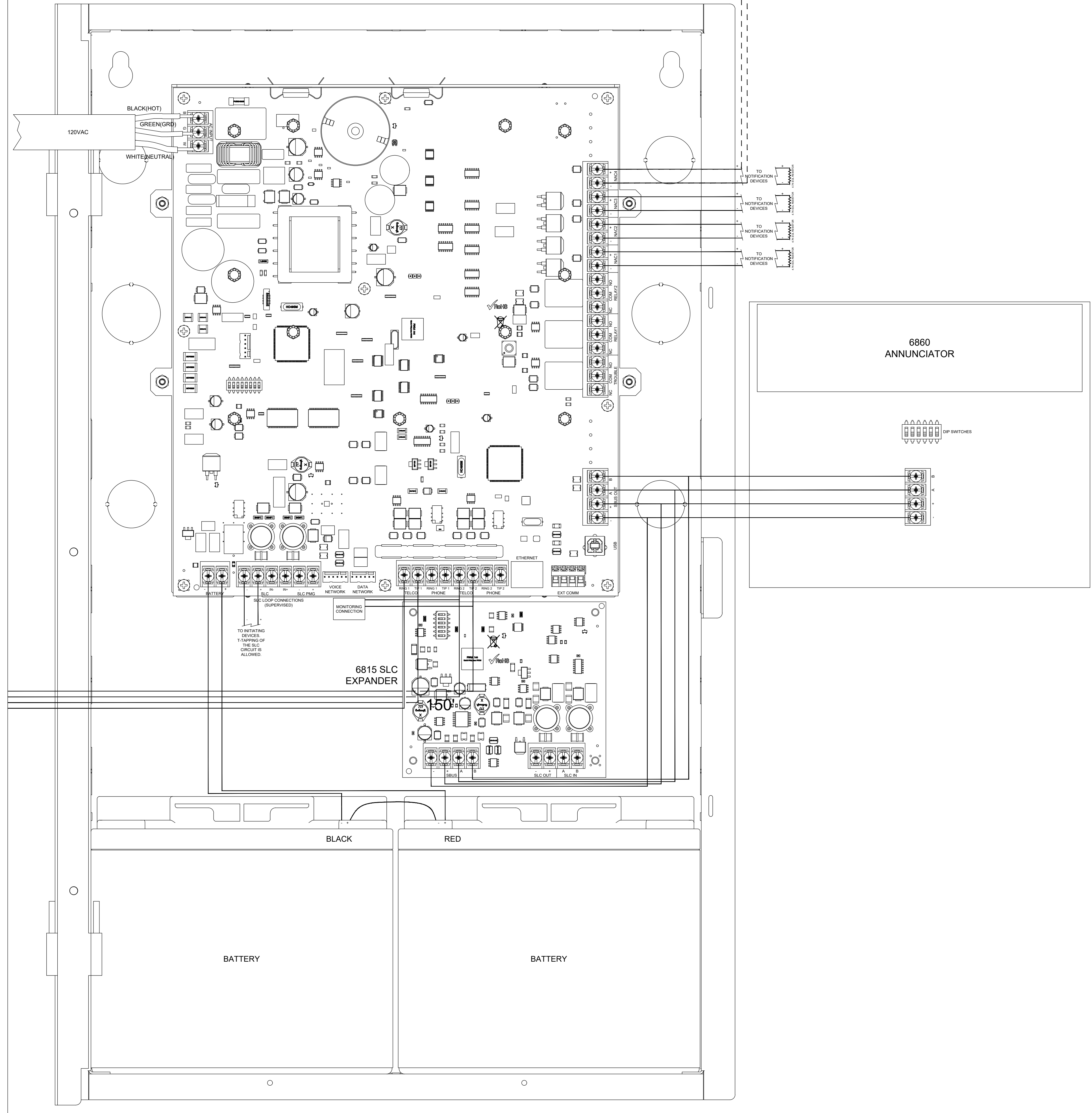
SHEET TITLE: FIRE ALARM DETAILS

PLOT DATE: 03-26-26

DESIGNED BY: A.K.

JOB NUMBER: 25-058

PANEL SK6808 WIRING DETAILS



City of Puyallup  
Development & Permitting Services  
ISSUED PERMIT

Building	Planning
Engineering	Public Works
Fire	Traffic

Bradley Heights  
Apartments - Bldg J

202 27th AVE SE, BLDG J, PUYALLUP, WA 98374



- REVISIONS:
- (2026-02-20) INITIAL REVIEW SET
  - (2026-03-26) PERMIT CORRECTIONS PRFA20260236

SHEET NUMBER: EF0.02

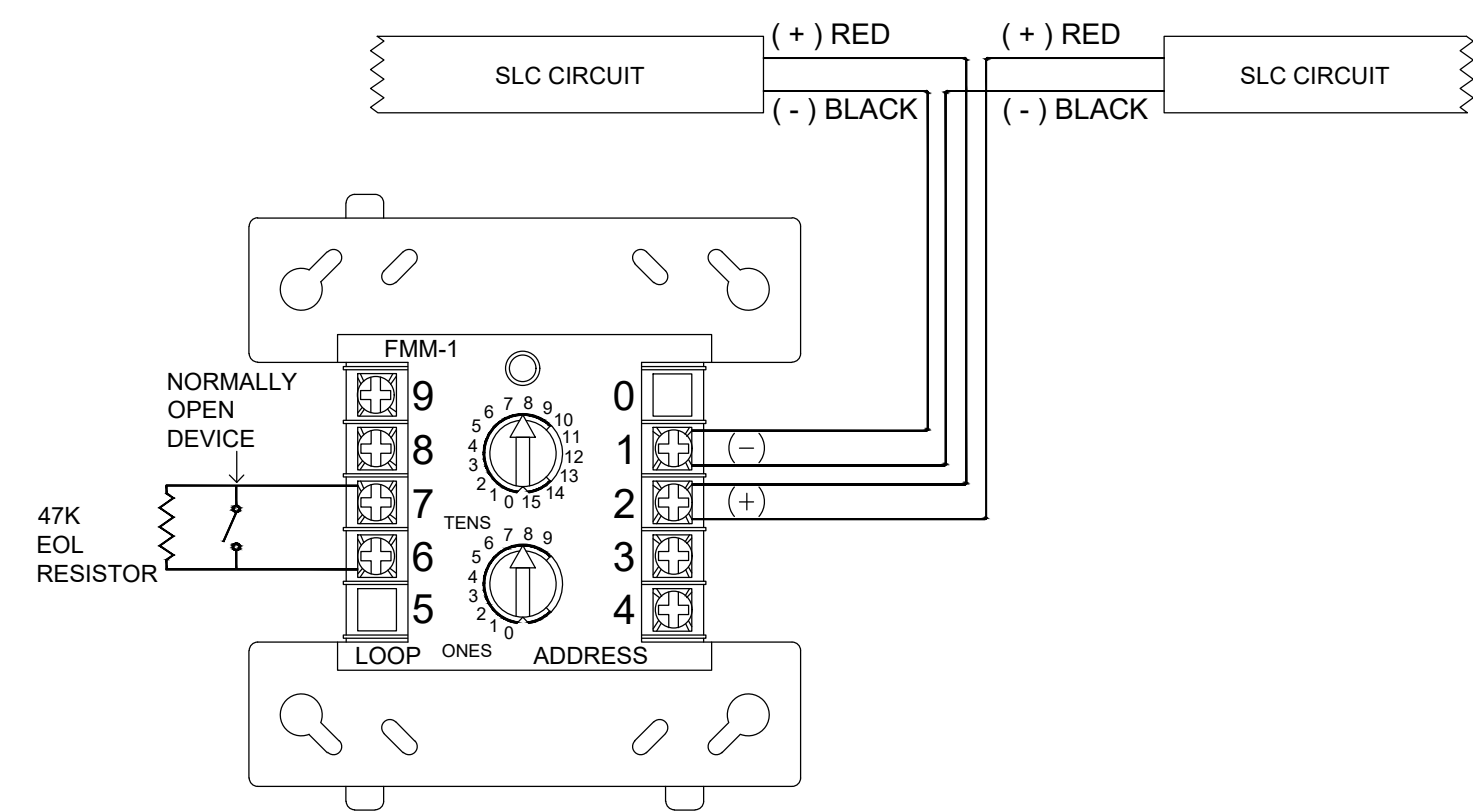
SHEET TITLE:  
PANEL DETAILS

PLOT DATE: 03-26-26

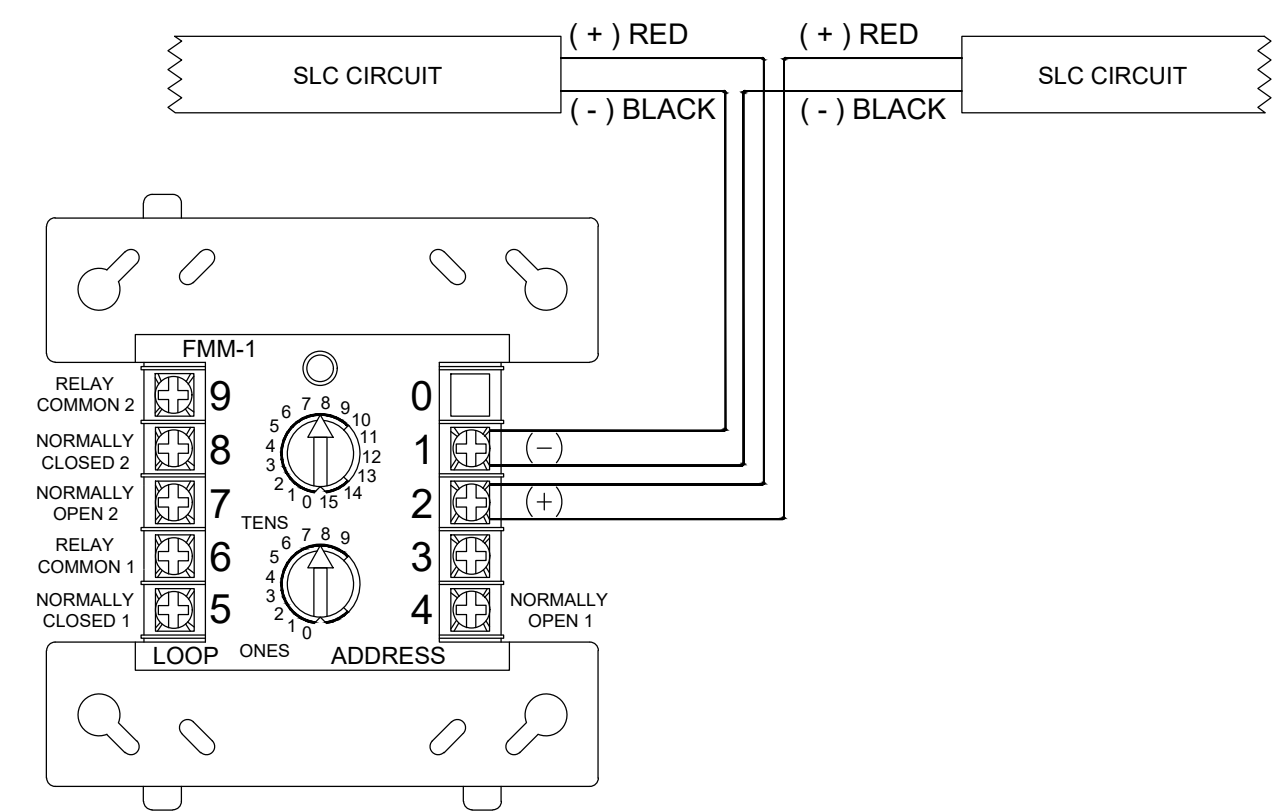
DESIGNED BY: A.K.

JOB NUMBER: 25-058

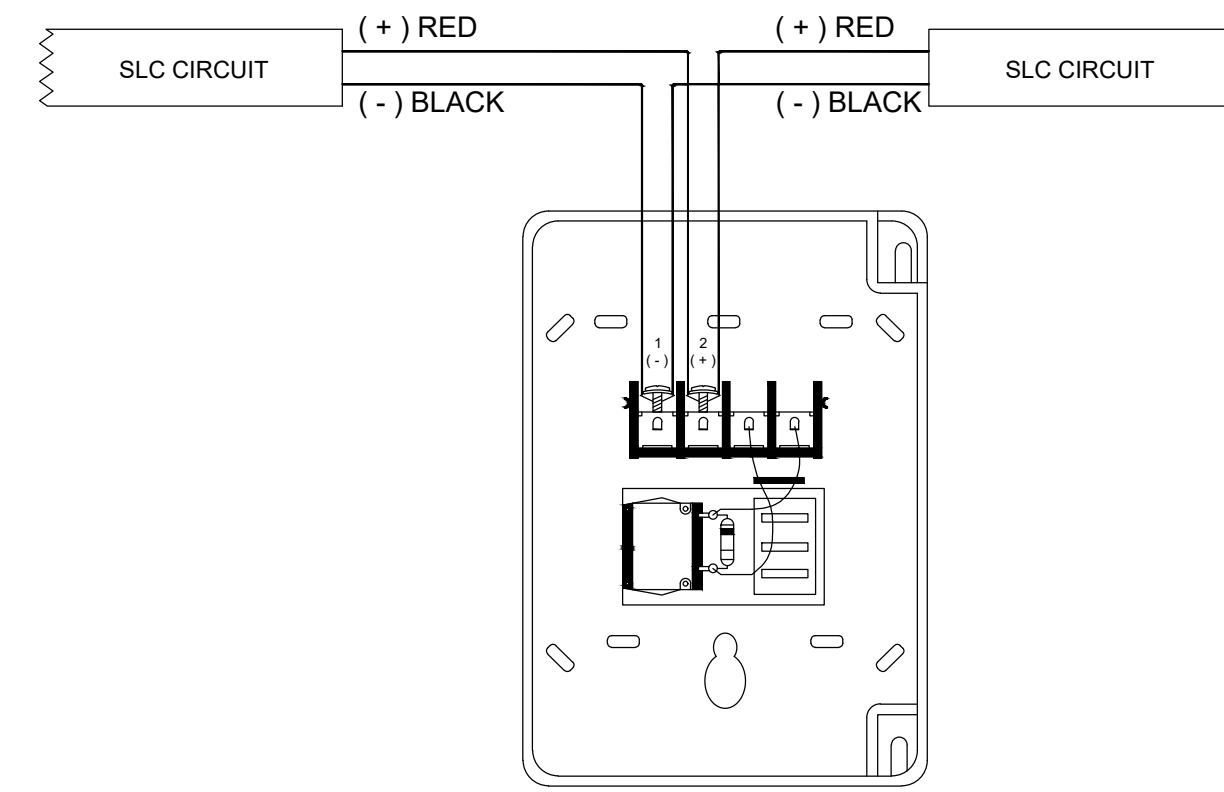
INPUT MODULE



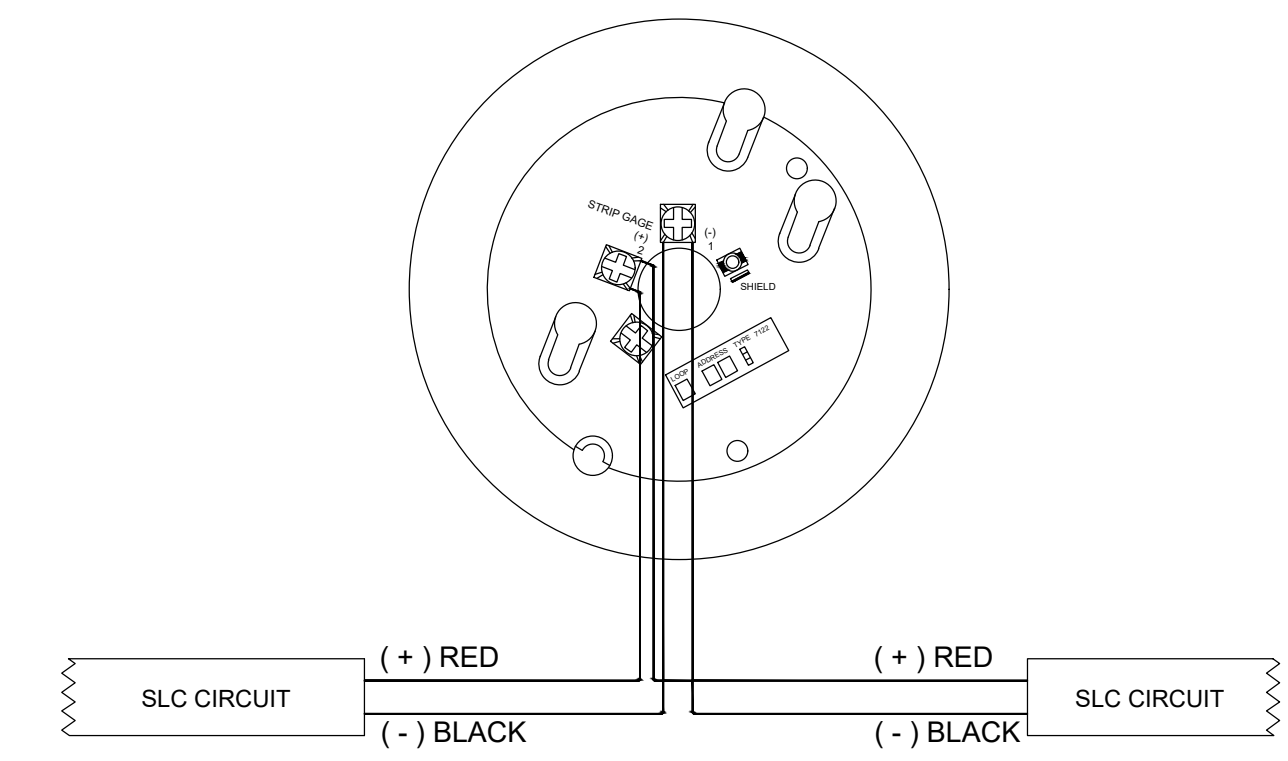
RELAY MODULE



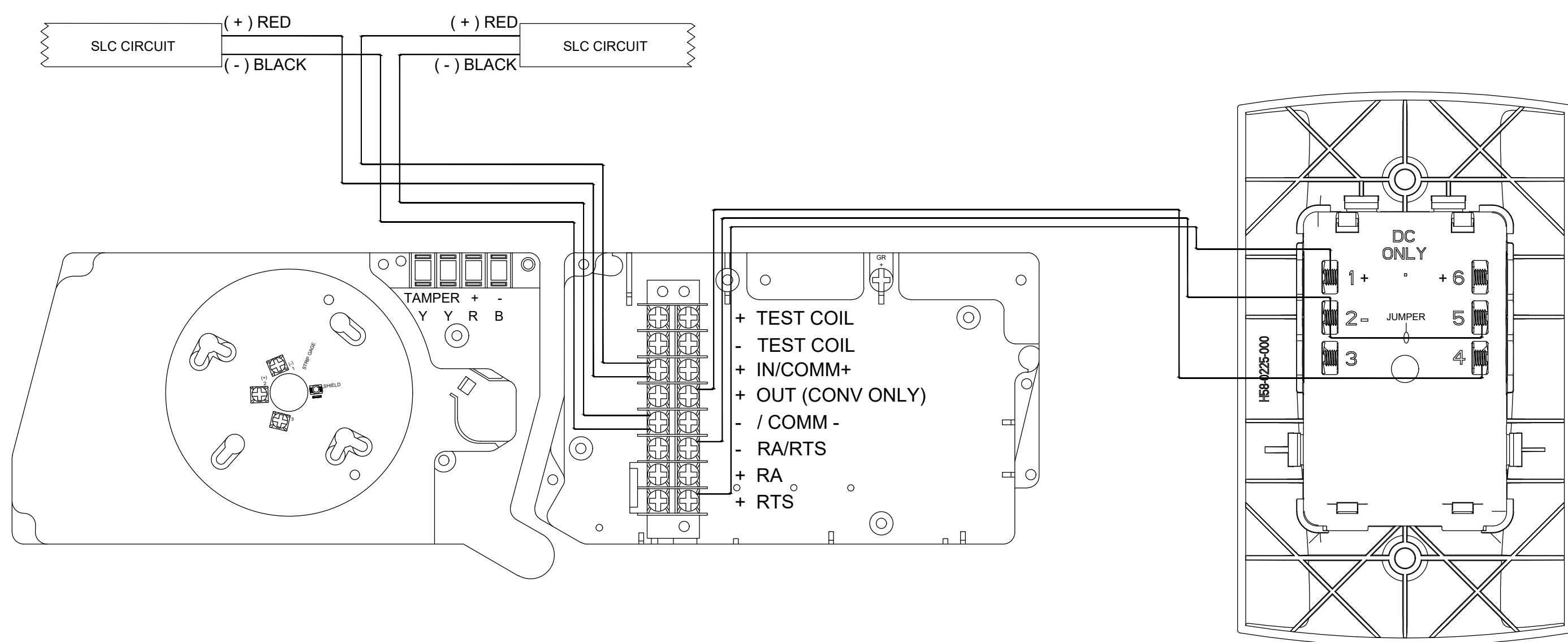
PULL STATION



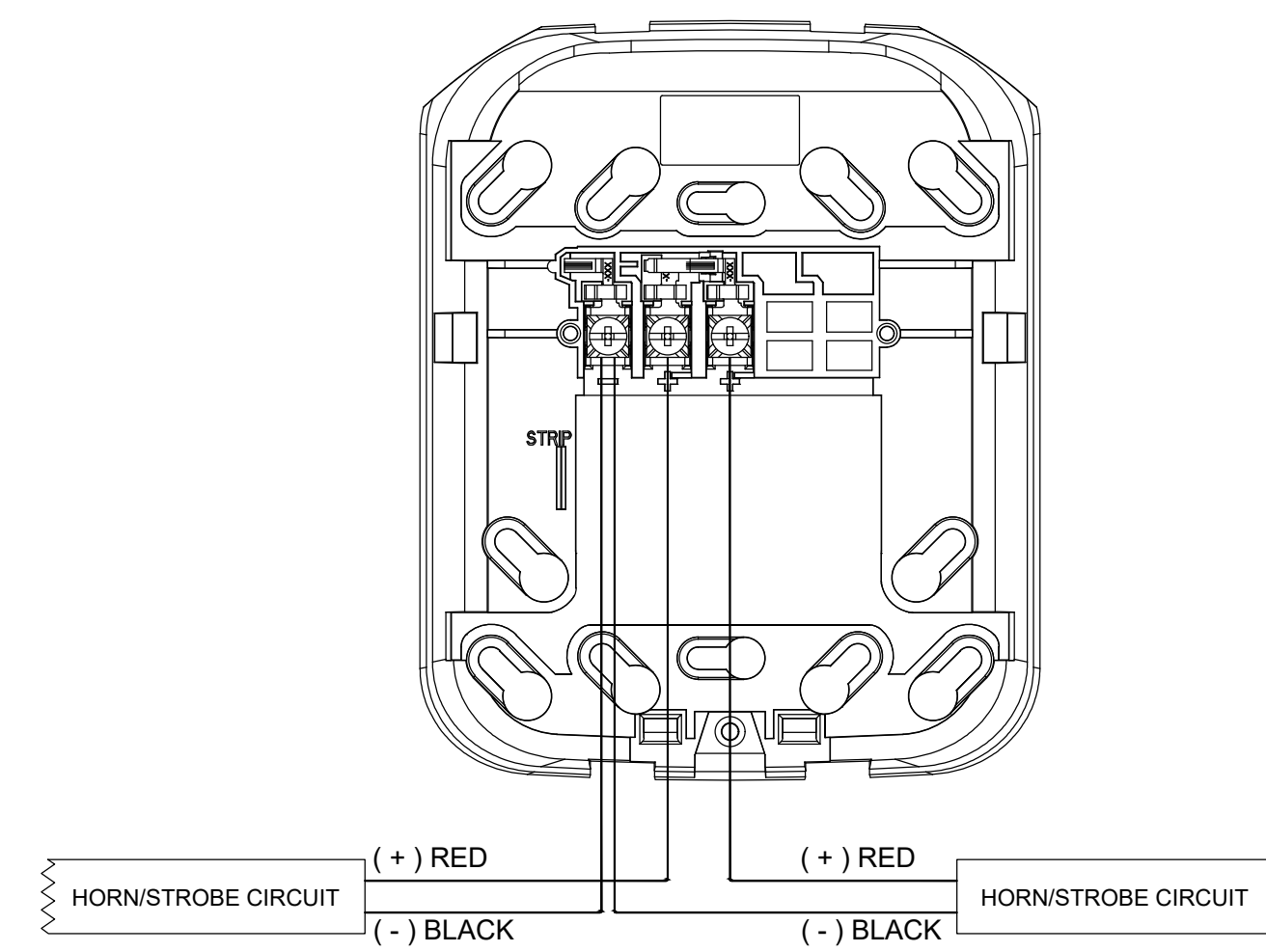
SMOKE DETECTOR



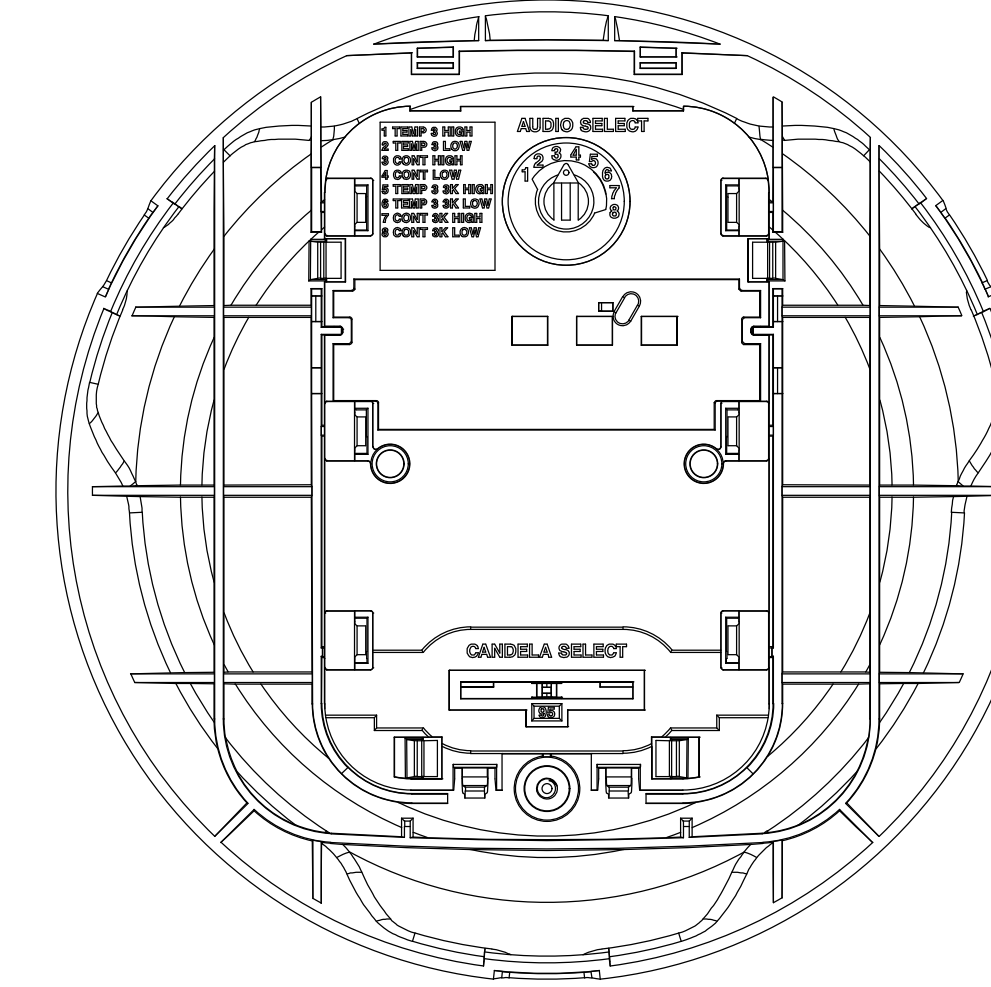
DUCT DETECTOR WITH REMOTE TEST STATION



HORN/STROBE

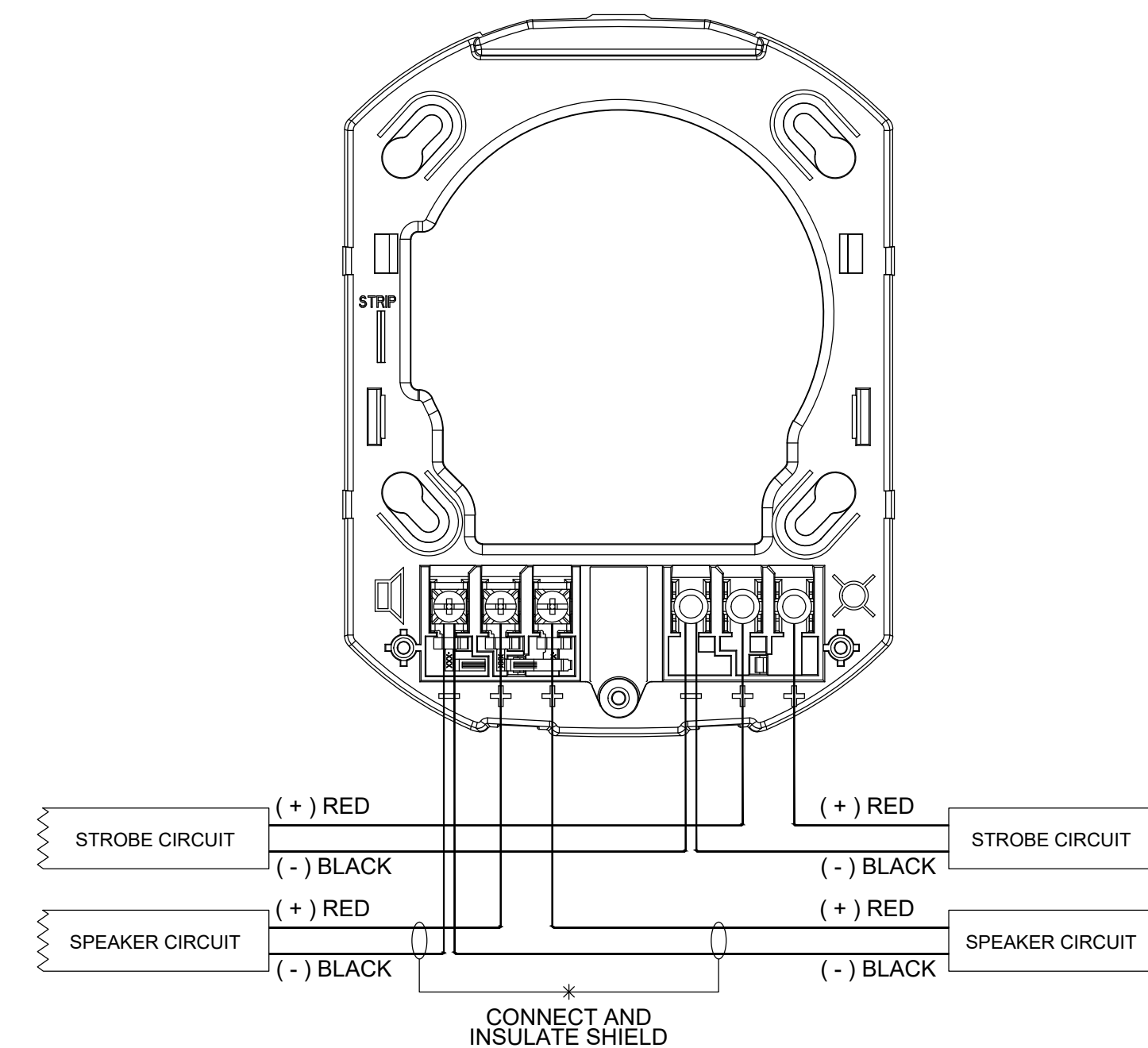


BACKPLATE

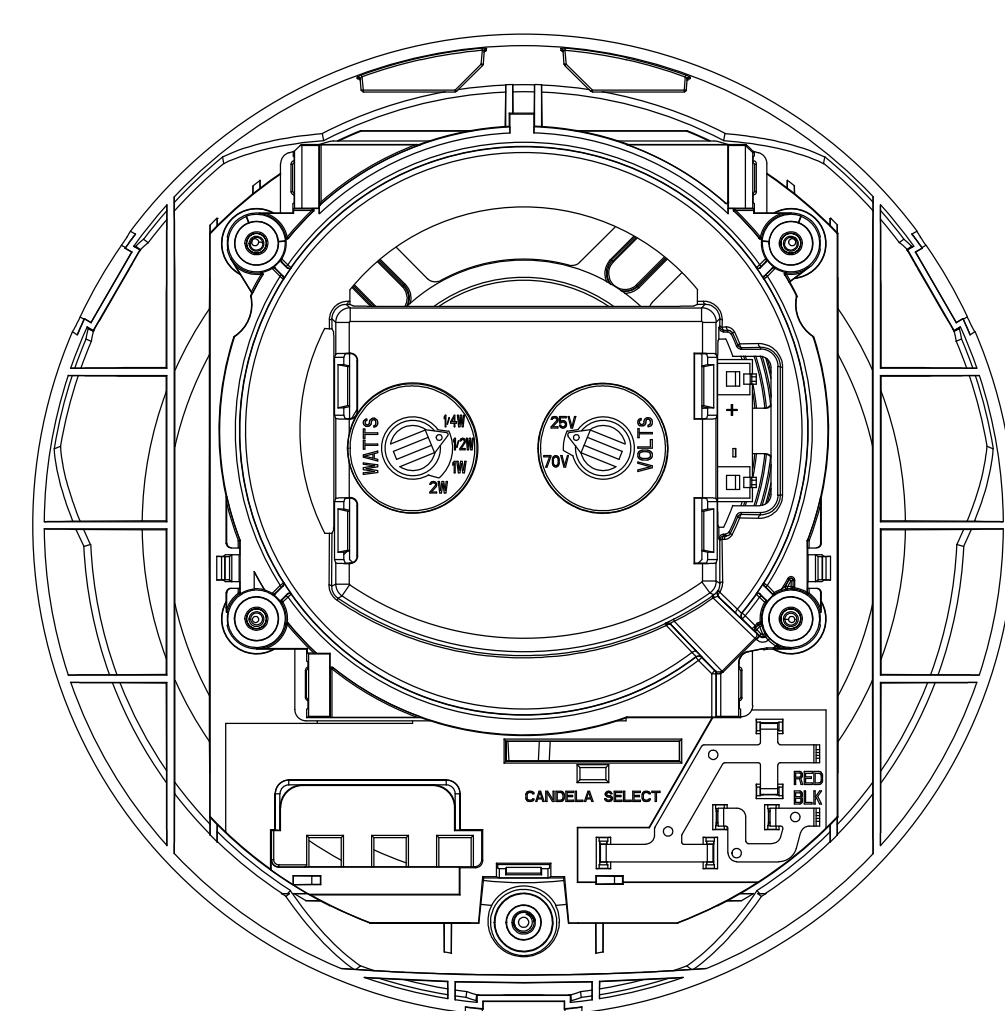


DEVICE

SPEAKER/STROBE

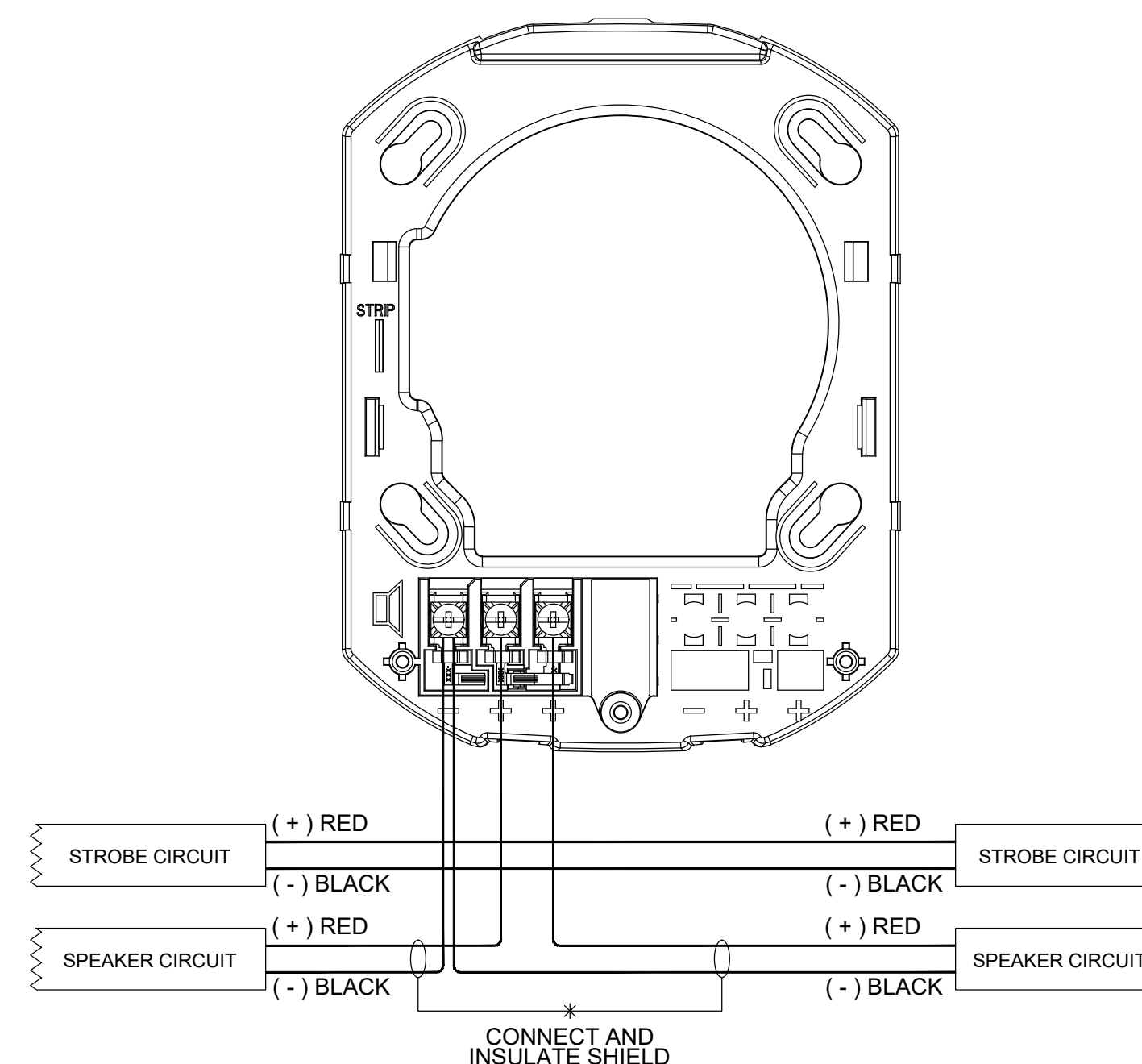


BACKPLATE

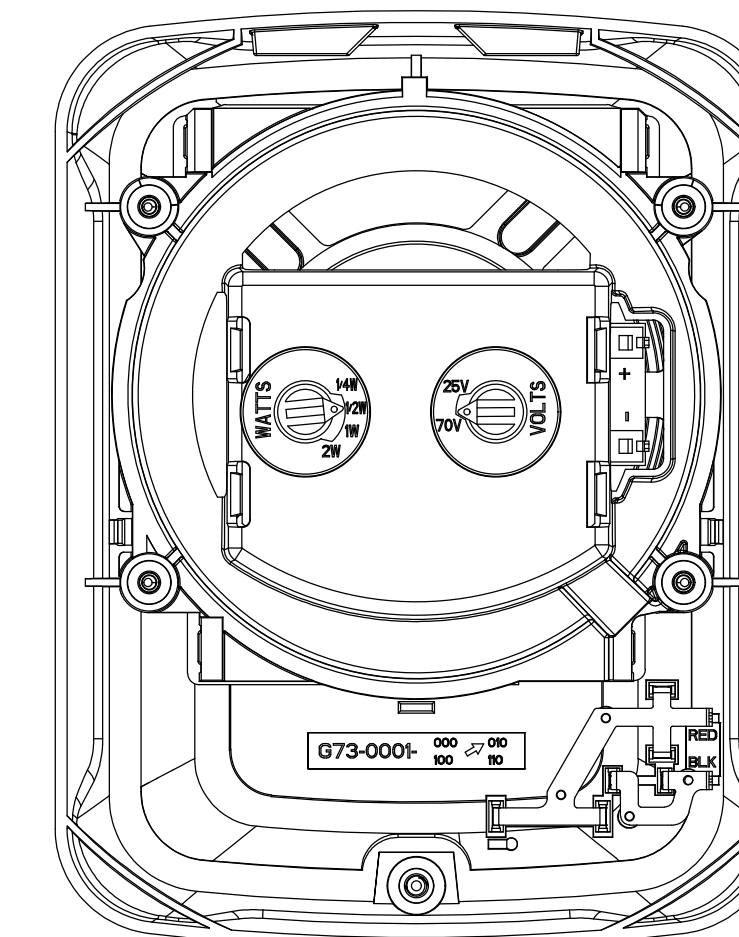


DEVICE

SPEAKER ONLY



BACKPLATE



DEVICE

CONVENTIONAL HEAT DETAIL

REVISIONS:

- (2026-02-20) INITIAL REVIEW SET
- (2026-03-26) PERMIT CORRECTIONS PRFA20260236

City of Puyallup  
 Development & Permitting Services  
**ISSUED PERMIT**

Building	Planning
Engineering	Public Works
Fire	Traffic

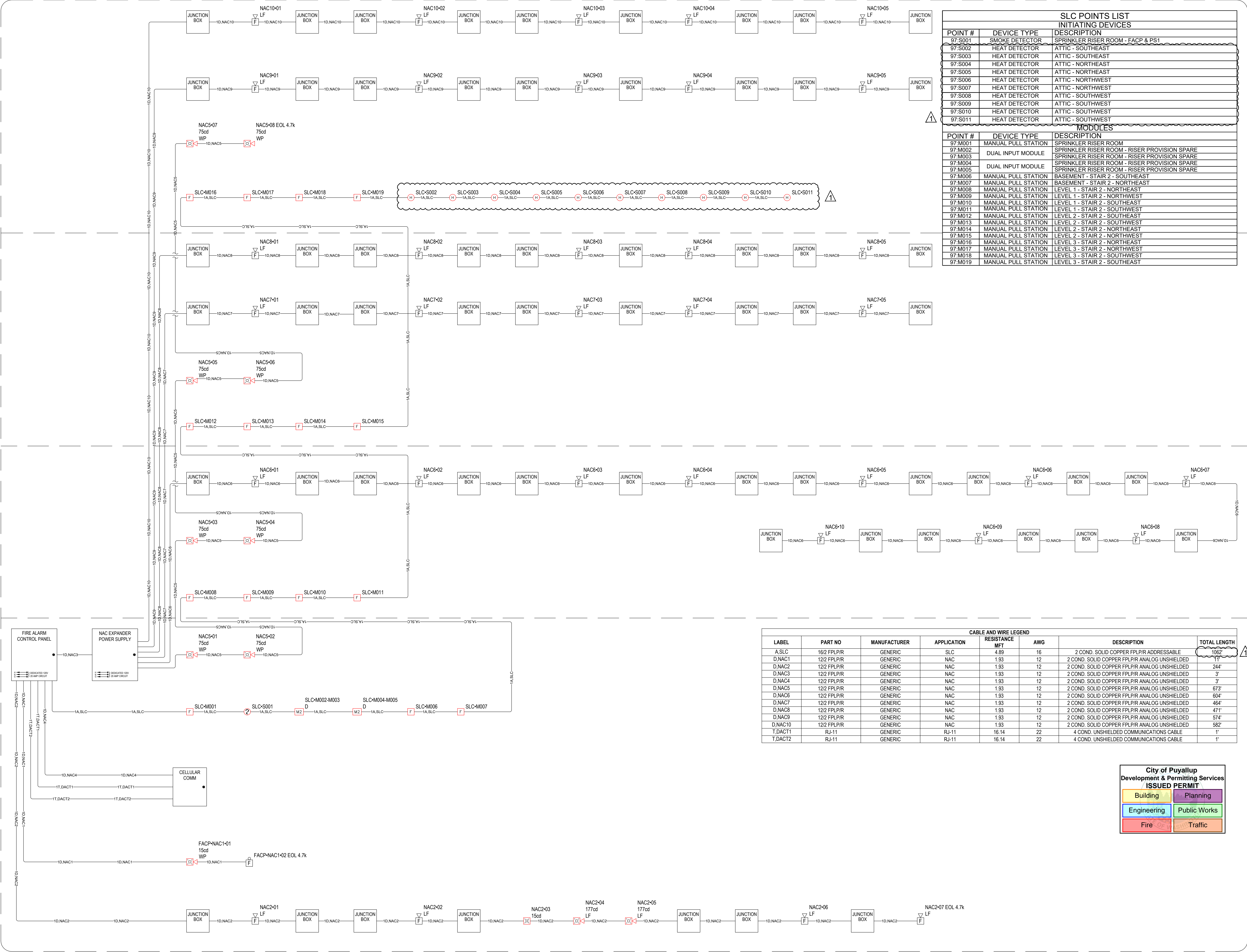
SHEET NUMBER: EF0.03

SHEET TITLE: DEVICE DETAILS

PLOT DATE: 03-26-26

DESIGNED BY: A.K.

JOB NUMBER: 25-058



**SLC POINTS LIST**

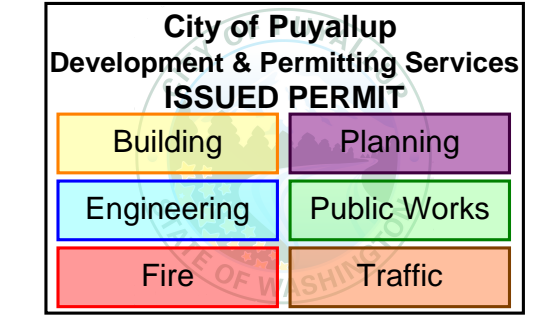
POINT #	DEVICE TYPE	DESCRIPTION
97-S001	SMOKE DETECTOR	SPRINKLER RISER ROOM - FACP & PS1
97-S002	HEAT DETECTOR	ATTIC - SOUTHEAST
97-S003	HEAT DETECTOR	ATTIC - SOUTHEAST
97-S004	HEAT DETECTOR	ATTIC - NORTHEAST
97-S005	HEAT DETECTOR	ATTIC - NORTHEAST
97-S006	HEAT DETECTOR	ATTIC - NORTHWEST
97-S007	HEAT DETECTOR	ATTIC - NORTHWEST
97-S008	HEAT DETECTOR	ATTIC - SOUTHWEST
97-S009	HEAT DETECTOR	ATTIC - SOUTHWEST
97-S010	HEAT DETECTOR	ATTIC - SOUTHWEST
97-S011	HEAT DETECTOR	ATTIC - SOUTHWEST

**MODULES**

POINT #	DEVICE TYPE	DESCRIPTION
97-M001	MANUAL PULL STATION	SPRINKLER RISER ROOM
97-M002	DUAL INPUT MODULE	SPRINKLER RISER ROOM - RISER PROVISION SPARE
97-M003	DUAL INPUT MODULE	SPRINKLER RISER ROOM - RISER PROVISION SPARE
97-M004	DUAL INPUT MODULE	SPRINKLER RISER ROOM - RISER PROVISION SPARE
97-M005	DUAL INPUT MODULE	SPRINKLER RISER ROOM - RISER PROVISION SPARE
97-M006	MANUAL PULL STATION	BASEMENT - STAIR 2 - SOUTHEAST
97-M007	MANUAL PULL STATION	BASEMENT - STAIR 2 - NORTHEAST
97-M008	MANUAL PULL STATION	LEVEL 1 - STAIR 2 - NORTHEAST
97-M009	MANUAL PULL STATION	LEVEL 1 - STAIR 2 - NORTHWEST
97-M010	MANUAL PULL STATION	LEVEL 1 - STAIR 2 - SOUTHWEST
97-M011	MANUAL PULL STATION	LEVEL 1 - STAIR 2 - SOUTHWEST
97-M012	MANUAL PULL STATION	LEVEL 2 - STAIR 2 - SOUTHWEST
97-M013	MANUAL PULL STATION	LEVEL 2 - STAIR 2 - SOUTHWEST
97-M014	MANUAL PULL STATION	LEVEL 2 - STAIR 2 - NORTHEAST
97-M015	MANUAL PULL STATION	LEVEL 2 - STAIR 2 - NORTHWEST
97-M016	MANUAL PULL STATION	LEVEL 3 - STAIR 2 - NORTHEAST
97-M017	MANUAL PULL STATION	LEVEL 3 - STAIR 2 - NORTHWEST
97-M018	MANUAL PULL STATION	LEVEL 3 - STAIR 2 - SOUTHWEST
97-M019	MANUAL PULL STATION	LEVEL 3 - STAIR 2 - SOUTHWEST

**CABLE AND WIRE LEGEND**

LABEL	PART NO	MANUFACTURER	APPLICATION	RESISTANCE MFT	AWG	DESCRIPTION	TOTAL LENGTH
A.SLC	16/2 FPLPIR	GENERIC	SLC	4.89	16	2 COND. SOLID COPPER FPLPIR ADDRESSABLE	1062
D.NAC1	12/2 FPLPIR	GENERIC	NAC	1.93	12	2 COND. SOLID COPPER FPLPIR ANALOG UNSHIELDED	11
D.NAC2	12/2 FPLPIR	GENERIC	NAC	1.93	12	2 COND. SOLID COPPER FPLPIR ANALOG UNSHIELDED	244
D.NAC3	12/2 FPLPIR	GENERIC	NAC	1.93	12	2 COND. SOLID COPPER FPLPIR ANALOG UNSHIELDED	3
D.NAC4	12/2 FPLPIR	GENERIC	NAC	1.93	12	2 COND. SOLID COPPER FPLPIR ANALOG UNSHIELDED	3
D.NAC5	12/2 FPLPIR	GENERIC	NAC	1.93	12	2 COND. SOLID COPPER FPLPIR ANALOG UNSHIELDED	673
D.NAC6	12/2 FPLPIR	GENERIC	NAC	1.93	12	2 COND. SOLID COPPER FPLPIR ANALOG UNSHIELDED	604
D.NAC7	12/2 FPLPIR	GENERIC	NAC	1.93	12	2 COND. SOLID COPPER FPLPIR ANALOG UNSHIELDED	464
D.NAC8	12/2 FPLPIR	GENERIC	NAC	1.93	12	2 COND. SOLID COPPER FPLPIR ANALOG UNSHIELDED	471
D.NAC9	12/2 FPLPIR	GENERIC	NAC	1.93	12	2 COND. SOLID COPPER FPLPIR ANALOG UNSHIELDED	574
D.NAC10	12/2 FPLPIR	GENERIC	NAC	1.93	12	2 COND. SOLID COPPER FPLPIR ANALOG UNSHIELDED	582
T.DACT1	RJ-11	GENERIC	RJ-11	16.14	22	4 COND. UNSHIELDED COMMUNICATIONS CABLE	1'
T.DACT2	RJ-11	GENERIC	RJ-11	16.14	22	4 COND. UNSHIELDED COMMUNICATIONS CABLE	1'



REVISIONS:  
 (2026-02-20) INITIAL REVIEW SET  
 (2026-03-26) PERMIT CORRECTIONS PRFA20260236

SHEET NUMBER: EF1.01

SHEET TITLE:  
 ONE-LINE RISER DIAGRAM

PLOT DATE: 03-26-26

DESIGNED BY: A.K.

JOB NUMBER: 25-058

PANEL LOAD SUMMARY				STANDBY CURRENT (AMPS)		ALARM CURRENT (AMPS)	
PANEL COMPONENT SUMMARY	QTY	PART NO	DESCRIPTION	CURRENT DRAW (A)	TOTAL (A)	CURRENT DRAW (A)	TOTAL
		1	6808 Main Board	Main Board	1 x 0.19	= 0.19	1 x 0.25
CIRCUIT SUMMARY	CIRCUIT						
			DACT1	1 x 0	= 0	1 x 0	= 0
			DACT2	1 x 0	= 0	1 x 0	= 0
			NAC1	1 x 0	= 0	1 x 0.2435	= 0.2435
			NAC2	1 x 0	= 0	1 x 1.368	= 1.368
			NAC3	1 x 0.014	= 0.014	1 x 0.014	= 0.014
			NAC4	1 x 0.06	= 0.06	1 x 0.2	= 0.2
			SLC	1 x 0.00895	= 0.00895	1 x 0.05625	= 0.05625
		TOTAL STANDBY CURRENT		0.27295		TOTAL ALARM CURRENT	2.13175

**PANEL FACP (6808)  
 SUMMARY REPORT**

CIRCUIT DETAILS AND CALCULATIONS									STANDBY CURRENT		ALARM CURRENT		POINT-TO-POINT VOLTAGE DROP CALCULATION SUMMARY		
SOURCE	CIRCUIT	AWG	SYMBOL	QTY	PART NO	DEVICE SETTING	CIRCUIT LENGTH	CIRCUIT RESISTANCE (Ω/ft)	CURRENT DRAW (A)	TOTAL (A)	CURRENT DRAW (A)	TOTAL (A)	STARTING CALCULATION VOLTAGE	END OF LINE VOLTAGE	VOLTAGE DROP
6808 Main Board	NAC1	12	WP	1	P2GRKLED	185cd	13'	0.00193	1 x 0	= 0	1 x 0.19	= 0.19	20.4v	20.39v	0.01v
			F	1	SSM24-10	1 x 0			= 0	1 x 0.0535	= 0.0535				
	NAC2	12	F LF	4	HW-LF		248'	0.00193	4 x 0	= 0	4 x 0.166	= 0.664	20.4v	19.67v	0.73v
			WP LF	2	P2WH-LF	177cd			2 x 0	= 0	2 x 0.343	= 0.686			
			WP	1	SWLED	15cd			1 x 0	= 0	1 x 0.018	= 0.018			
	NAC3	12	PRR	1	HPF-PS10		3'	0.00193	1 x 0.014	= 0.014	1 x 0.014	= 0.014	20.4v	20.4v	0v
	NAC4	12	SEL	1	HW-AV-LTE-M		1'	0.00193	1 x 0.06	= 0.06	1 x 0.2	= 0.2	20.4v	20.4v	0v
	SLC	16	MZ	2	SK-MONITOR-2		1062'	0.00489	2 x 0.00075	= 0.0015	2 x 0.00075	= 0.0015			
			F	15	SK-PULL-DA	15 x 0.00035			= 0.00525	15 x 0.00035	= 0.00525				
			H	10	SS-HEAT w/B300-6	10 x 0.0002			= 0.002	10 x 0.0045	= 0.045				
?			1	SS-PHOTO w/B300-6	1 x 0.0002	= 0.0002			1 x 0.0045	= 0.0045					

**SECONDARY POWER SOURCE REQUIREMENTS**

		REQUIRED STANDBY TIME = 24 HOURS		REQUIRED ALARM TIME = 5 MINUTES	
	SECONDARY STANDBY LOAD	0.27295	x 24	= 6.55 AH	
	SECONDARY ALARM LOAD	2.13175	x 0.08	= 0.18 AH	
	STANDBY AND ALARM LOAD SUBTOTAL			6.73 AH	
	DERATING FACTOR			x 1.25	
	SECONDARY LOAD REQUIREMENTS (AMP HOURS)			8.41 AH	

**PROVIDE (2) 12V  
 12AH BATTERIES @  
 24VDC**

PANEL LOAD SUMMARY				STANDBY CURRENT (AMPS)		ALARM CURRENT (AMPS)	
PANEL COMPONENT SUMMARY	QTY	PART NO	DESCRIPTION	CURRENT DRAW (A)	TOTAL (A)	CURRENT DRAW (A)	TOTAL
		1	HPF-PS10 MAIN BOARD	Fire Alarm Power Supply Main Board	1 x 0.156	= 0.156	1 x 0.185
CIRCUIT SUMMARY	CIRCUIT						
			NAC10	1 x 0	= 0	1 x 0.83	= 0.83
			NAC5	1 x 0	= 0	1 x 0.696	= 0.696
			NAC6	1 x 0	= 0	1 x 1.66	= 1.66
			NAC7	1 x 0	= 0	1 x 0.83	= 0.83
			NAC8	1 x 0	= 0	1 x 0.83	= 0.83
			NAC9	1 x 0	= 0	1 x 0.83	= 0.83
		TOTAL STANDBY CURRENT		0.156		TOTAL ALARM CURRENT	5.861

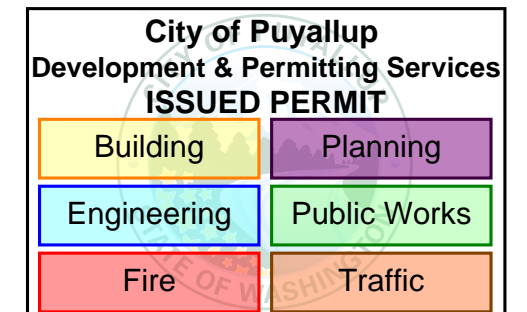
**PANEL PS1  
 (HPF-PS10)  
 SUMMARY REPORT  
 PANEL POWER  
 SUPPLY MAX  
 CURRENT = 10A  
 TOTAL USED  
 CAPACITY = 5.861A  
 (58.61 %)**

CIRCUIT DETAILS AND CALCULATIONS									STANDBY CURRENT		ALARM CURRENT		POINT-TO-POINT VOLTAGE DROP CALCULATION SUMMARY		
SOURCE	CIRCUIT	AWG	SYMBOL	QTY	PART NO	DEVICE SETTING	CIRCUIT LENGTH	CIRCUIT RESISTANCE (Ω/ft)	CURRENT DRAW (A)	TOTAL (A)	CURRENT DRAW (A)	TOTAL (A)	STARTING CALCULATION VOLTAGE	END OF LINE VOLTAGE	VOLTAGE DROP
HPF-PS10 MAIN BOARD	NAC10	12	F LF	5	HW-LF		582'	0.00193	5 x 0	= 0	5 x 0.166	= 0.83	20.4v	18.93v	1.47v
	NAC5	12	WP	8	P2GRKLED	75cd	673'	0.00193	8 x 0	= 0	8 x 0.087	= 0.696	20.4v	19.39v	1.01v
	NAC6	12	F LF	10	HW-LF		604'	0.00193	10 x 0	= 0	10 x 0.166	= 1.66	20.4v	18.08v	2.32v
	NAC7	12	F LF	5	HW-LF		464'	0.00193	5 x 0	= 0	5 x 0.166	= 0.83	20.4v	19.3v	1.1v
	NAC8	12	F LF	5	HW-LF		471'	0.00193	5 x 0	= 0	5 x 0.166	= 0.83	20.4v	19.28v	1.12v
	NAC9	12	F LF	5	HW-LF		574'	0.00193	5 x 0	= 0	5 x 0.166	= 0.83	20.4v	18.95v	1.45v

**SECONDARY POWER SOURCE REQUIREMENTS**

		REQUIRED STANDBY TIME = 24 HOURS		REQUIRED ALARM TIME = 5 MINUTES	
	SECONDARY STANDBY LOAD	0.156	x 24	= 3.74 AH	
	SECONDARY ALARM LOAD	5.861	x 0.08	= 0.49 AH	
	STANDBY AND ALARM LOAD SUBTOTAL			4.23 AH	
	DERATING FACTOR			x 1.25	
	SECONDARY LOAD REQUIREMENTS (AMP HOURS)			5.29 AH	

**PROVIDE (2) 12V 7AH  
 BATTERIES @ 24VDC**



REVISIONS:  
 (2026-02-20) INITIAL REVIEW SET  
 (2026-03-26) PERMIT CORRECTIONS PRFA20260236

SHEET NUMBER: EF2.01

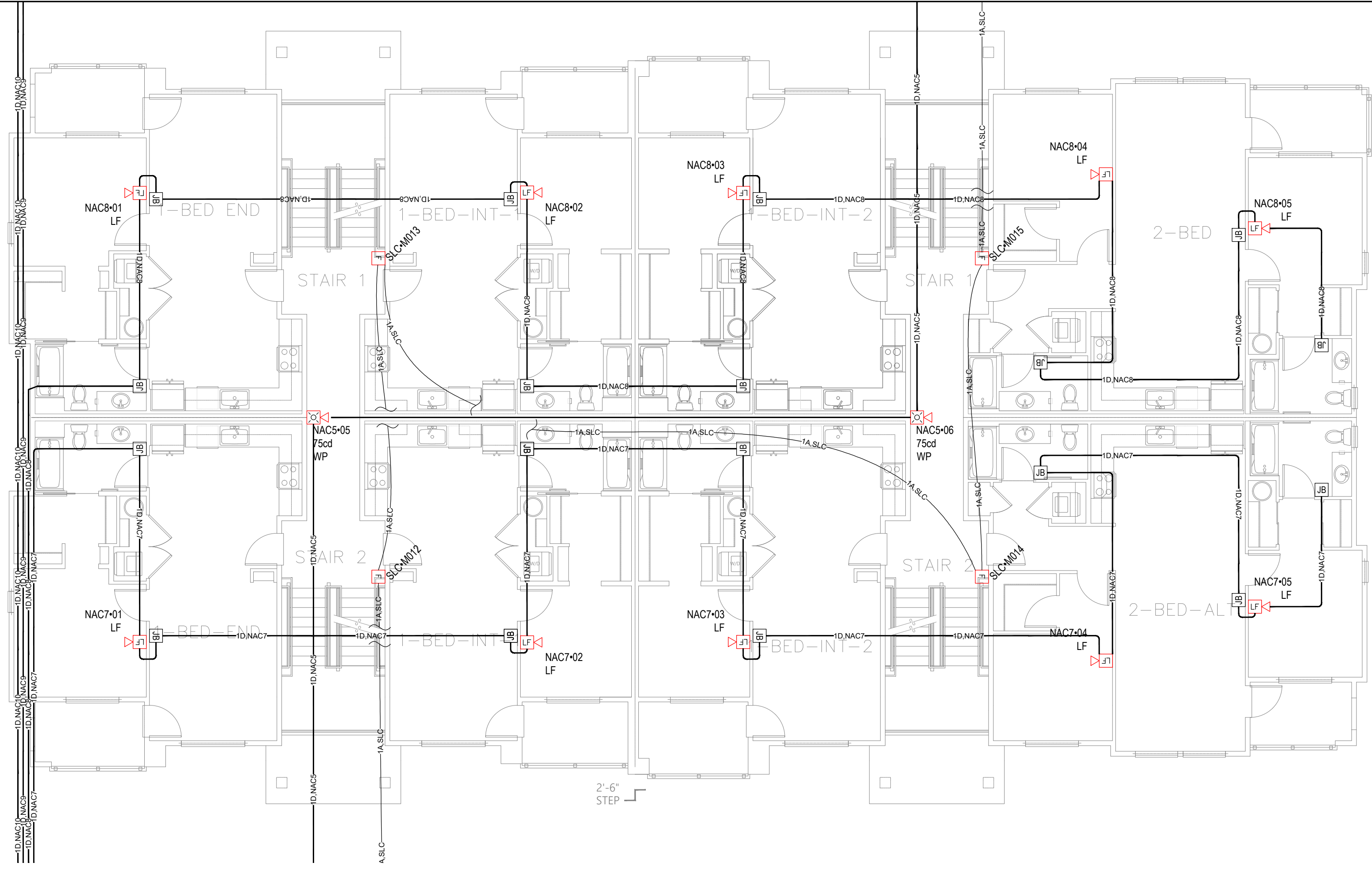
SHEET TITLE: FIRE ALARM PANEL CALCULATIONS

PLOT DATE: 03-26-26

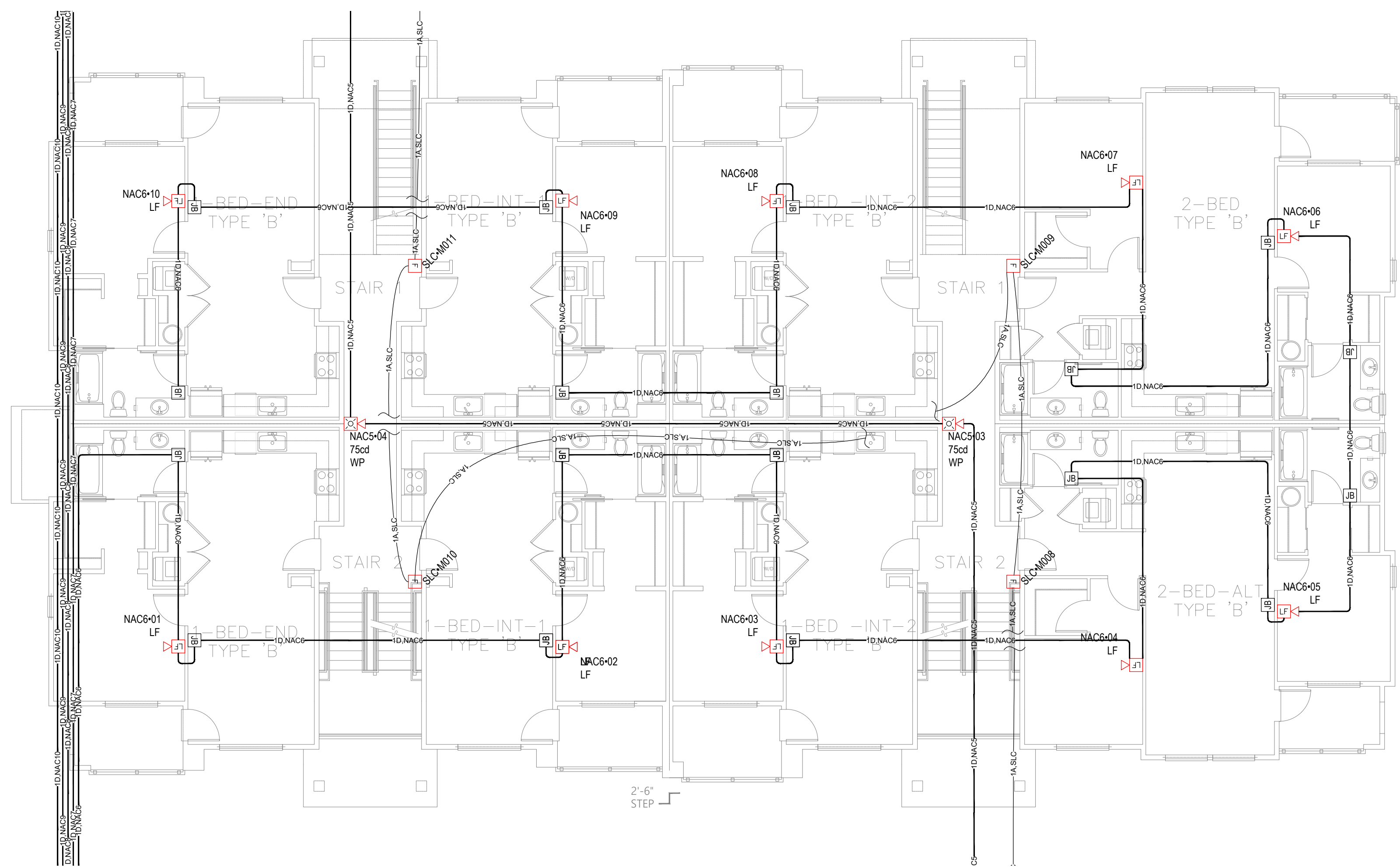
DESIGNED BY: A.K.

JOB NUMBER: 25-058





**2** LEVEL 2 FIRE ALARM PLAN  
SCALE: 1/8" = 1'-0"



**1** LEVEL 1 FIRE ALARM PLAN  
SCALE: 1/8" = 1'-0"

**City of Puyallup  
Development & Permitting Services  
ISSUED PERMIT**

Building	Planning
Engineering	Public Works
Fire	Traffic

# Bradley Heights Apartments - Bldg J

202 27th AVE SE, BLDG J, PUYALLUP, WA 98374

- REVISIONS:
- (2026-02-20) INITIAL REVIEW SET
  - (2026-03-26) PERMIT CORRECTIONS PRFA20260236

SHEET NUMBER: EF3.01

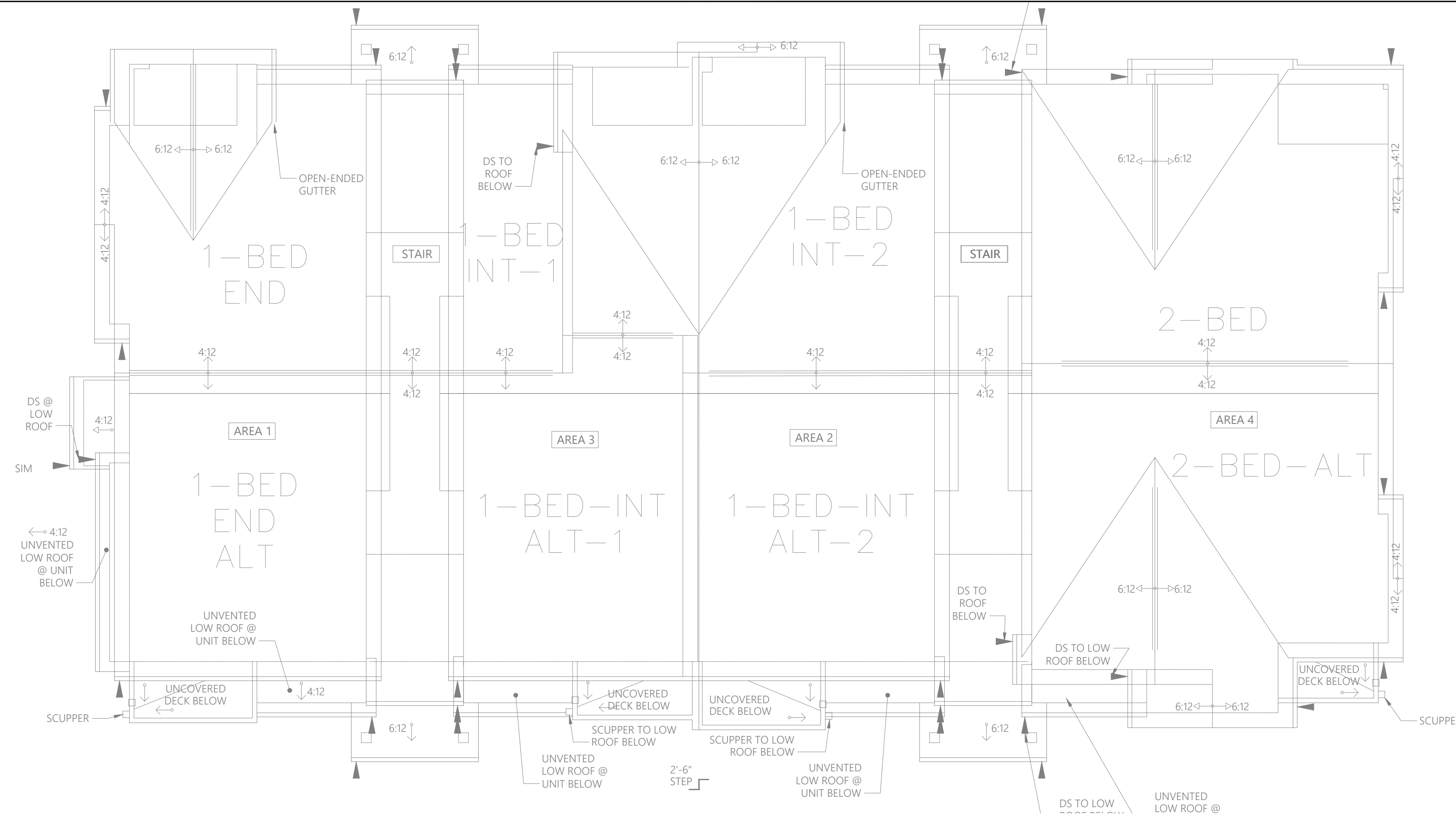
SHEET TITLE:  
LEVEL 1 & 2  
FIRE ALARM  
PLAN

PLOT DATE: 03-26-26

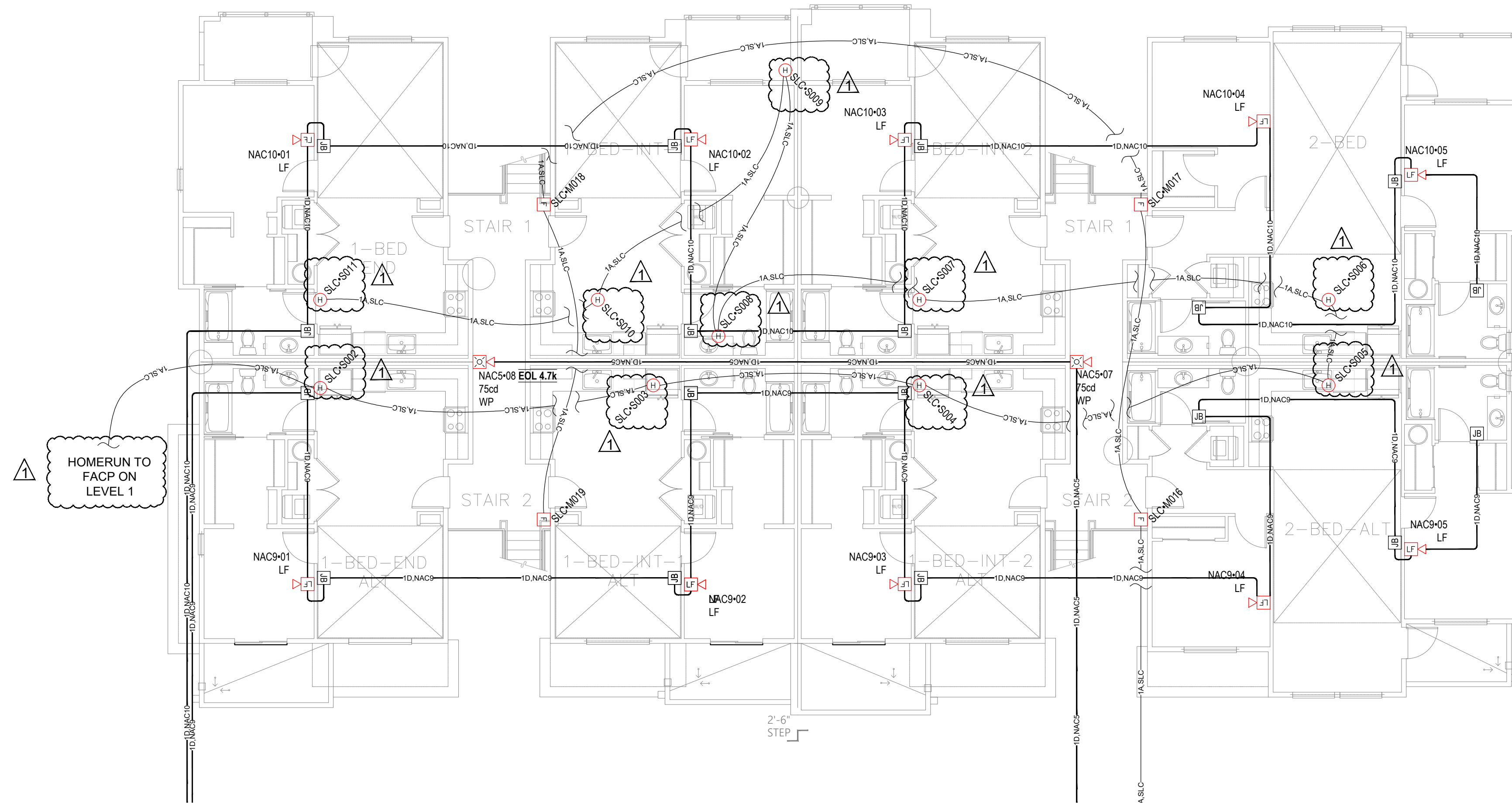
DESIGNED BY: A.K.

JOB NUMBER: 25-058

4826 7th St NW • Suite 101 • Auburn, WA 98001  
P: (253) 859-2000 • F: (253) 859-2363  
www.kirbyelectric.com



**2** ROOF FIRE ALARM PLAN  
SCALE: 1/8" = 1'-0"



**1** LEVEL 3 FIRE ALARM PLAN  
SCALE: 1/8" = 1'-0"

City of Puyallup  
Development & Permitting Services  
**ISSUED PERMIT**

Building	Planning
Engineering	Public Works
Fire	Traffic

REVISIONS:  
 (2026-02-20) INITIAL REVIEW SET  
 (2026-03-26) PERMIT CORRECTIONS PRFA20260236

SHEET NUMBER: EF3.02

SHEET TITLE:  
LEVEL 3 &  
ROOF FIRE  
ALARM PLAN

PLOT DATE: 03-26-26

DESIGNED BY: A.K.

JOB NUMBER: 25-058