

Bradley Heights Apartments

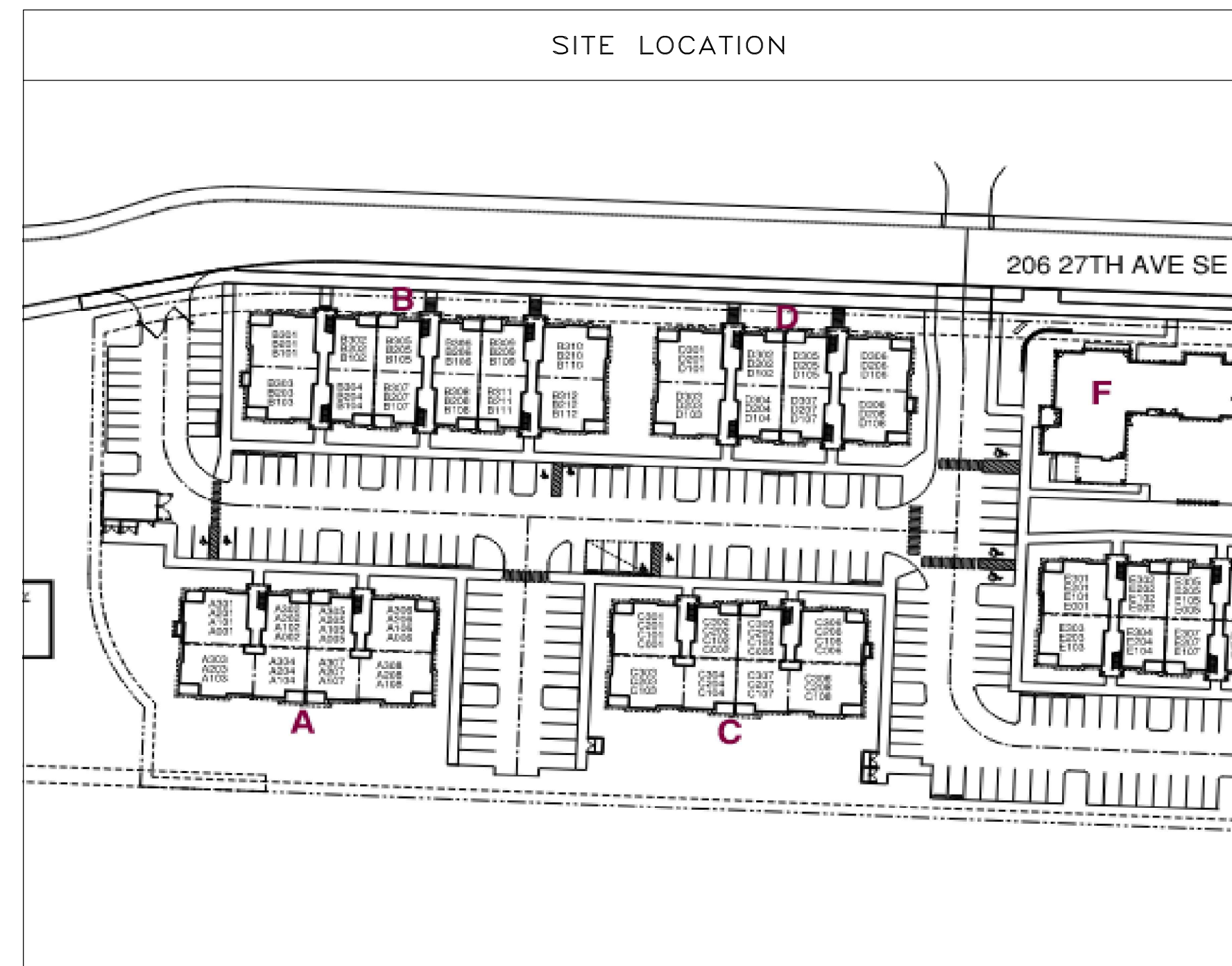
Building D

FIRE ALARM AND DETECTION SYSTEM

****UL CERTIFICATION AND SERVICE CONTRACT TO BE ISSUED TO OWNER, BY CONVERGINT TECHNOLOGIES , UPON COMPLETION OF INSTALLATION AND INSPECTION OF SYSTEM****

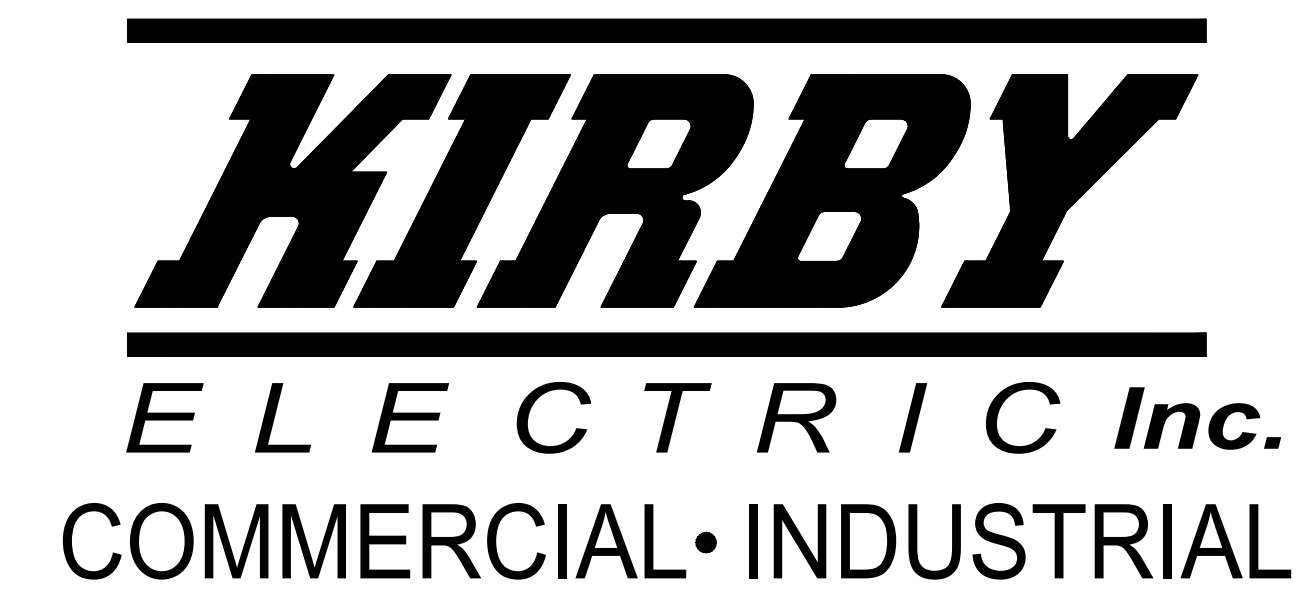
PROJECT SCOPE

1. PROVIDE AND INSTALL NEW SILENT KNIGHT 6808 FIRE ALARM CONTROL PANEL AND HONEYWELL HPF-PS10 REMOTE POWER SUPPLY FOR OCCUPANT NOTIFICATION.
2. PROVIDE AND INSTALL 36 LOW FREQUENCY SOUNDER NOTIFICATION APPLIANCES.
3. PROVIDE AND INSTALL 7 HORN/STROBE NOTIFICATION APPLIANCES & 1 WATERFLOW BELL.
4. PROVIDE AND INSTALL 13 MANUAL PULL STATIONS.
5. PROVIDE AND INSTALL 1 SMOKE DETECTOR FOR FACP AND PS10
6. PROVIDE AND INSTALL 2 DUAL-INPUT MODULES.
7. PROVIDE AND INSTALL A HONEYWELL HW-AV-LTE-M CELLULAR COMMUNICATOR.
8. PROVIDE AND INSTALL 12 HEAT DETECTORS.



APPLICABLE CODES & STANDARDS
2022 NATIONAL FIRE ALARM & SIGNALING CODE NFPA72 2023 NATIONAL ELECTRICAL CODE (NEC) NFPA70 2021 INTERNATIONAL FIRE CODE (IFC) WITH WASHINGTON STATE AMENDMENTS 2021 INTERNATIONAL BUILDING CODE (IBC) WITH WASHINGTON STATE AMENDMENTS
OCCUPANCY & BUILDING
OCCUPANCY : R-2 USE: RESIDENTIAL BUILDING AREA : 24,736 S.F.

PROJECT CONTACTS		
PROJECT MANAGER	DMON ADAMS	dmona@kirbyelectric.com
FOREMAN	---	---
DESIGNER	ANATOLIY KINAKH	anatoliyk@kirbyelectric.com
GENERAL PROJECT INFORMATION	TIM KUDELA	timk@kirbyelectric.com
TECHNICIAN SCHEDULING	ANDRACO DICKSON	andracod@kirbyelectric.com

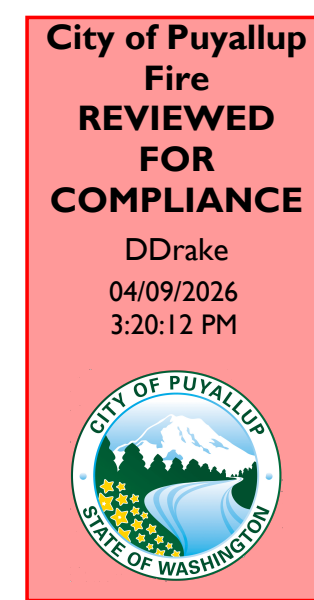
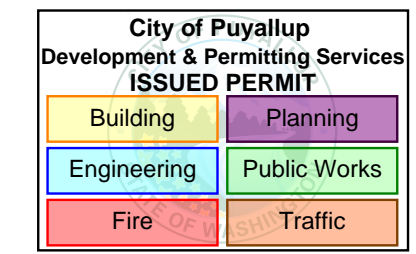


FIRE ALARM SHEET INDEX	
PAGE	SHEET TITLE
EF0.00	COVER SHEET
EF0.01	FIRE ALARM DETAILS
EF0.02	PANEL DETAILS
EF0.03	DEVICE DETAILS
EF1.01	ONE-LINE RISER DIAGRAM
EF2.01	ONE-LINE RISER DIAGRAM
EF3.01	LEVEL 1 & 2 FIRE ALARM PLAN
EF3.02	LEVEL 3 & ROOF FIRE ALARM PLAN



Bradley Heights
Apartments - Bldg D
206 27th Ave SE, Puyallup, WA 98374

- REVISIONS:
- (2026-02-26) INITIAL REVIEW SET
 - (2026-02-27) PERMIT SET
 - (2026-03-27) PRFA20260294 PERMIT CORRECTIONS



THE APPROVED CONSTRUCTION PLANS AND ALL ENGINEERING MUST BE POSTED ON THE JOB AT ALL INSPECTIONS IN A VISIBLE AND READILY ACCESSIBLE LOCATION.

Approval of submitted plans is not an approval of omissions or oversight by this office or noncompliance with any applicable regulations of local government. The contractor is responsible for making sure that the building complies with all applicable building codes and regulations of the local government.

SHEET NUMBER: EF0.00
SHEET TITLE: COVER SHEET
PLOT DATE: 03-27-26
DESIGNED BY: A.K.
JOB NUMBER: 25-058

DEVICE LEGEND				
SYMBOL	QUANTITY	MANUFACTURER	PART NO	DESCRIPTION
FACP	1	SILENT KNIGHT	6808	INTELLIGENT FIRE ALARM CONTROL PANEL WITH COMMUNICATOR
PS10	1	HONEYWELL	HPF-PS10	10.0 A, 120 VAC REMOTE CHARGER POWER SUPPLY IN A LOCKABLE, METAL ENCLOSURE
CELL	1	HONEYWELL	HW-AV-LTE-M	DUAL-PATH COMMUNICATOR WITH ENCLOSURE, INCLUDES ANTENNA
M2	2	SILENT KNIGHT	SK-MONITOR-2	DUAL MONITORING MODULE
F	13	SILENT KNIGHT	SK-PULL-DA	DUAL ACTION PULL STATION
Ⓢ	1	SYSTEM SENSOR	SS-PHOTO WB300-6	WHITE, ADDRESSABLE PHOTOELECTRIC DETECTOR, STANDARD BASE
Ⓢ	12	SYSTEM SENSOR	SS-HEAT WB300-6	INTELLIGENT FIXED TEMPERATURE THERMAL DETECTOR, STANDARD BASE
Ⓢ WP	7	SYSTEM SENSOR	P2GRKLED	2-WIRE, COMPACT HORN STROBE, WALL, RED, OUTDOOR
Ⓢ LF	36	SYSTEM SENSOR	HW-LF	LOW FREQUENCY SOUNDER, WHITE
Ⓢ	1	SYSTEM SENSOR	SSM24-10	ALARM BELL 10" 24VDC, RED
Ⓢ	60	GENERIC	JUNCTION BOX	
Ⓢ	1	SPACE AGE ELECTRONICS	E120V-GT	HYBRID SURGE PROTECTION DEVICE
Ⓢ	40	GENERIC	LINE BREAK (DOUBLE)	
Ⓢ	1	SPACE AGE ELECTRONICS	SSU00685	FIRE ALARM DOCUMENT CABINET W/8GB USB DRIVE (ACE-11), RED WITH CUSTOM LOGO
ADDITIONAL ASSEMBLY COMPONENTS AND HARDWARE				
	1	HONEYWELL	HPF-PS10 MAIN BOARD	FIRE ALARM POWER SUPPLY MAIN BOARD
	1	SILENT KNIGHT	6808 MAIN BOARD	MAIN BOARD

GENERAL NOTES

- FIRE ALARM SYSTEM IS POWER LIMITED.
- ALL RACEWAYS MUST BE FREE OF MOISTURE.
- REFER TO DATA SHEETS FOR PROPER TYPE AND SIZES OF REQUIRED DEVICE MOUNTING ELECTRICAL BOXES.
- AC VOLTAGE IS NOT PERMITTED IN THE SAME RACEWAY AS FIRE ALARM WIRING.
- UNRELATED (NON-FIRE ALARM) WIRE SHALL NOT BE IN THE SAME RACEWAY AS FIRE ALARM WIRE.
- ALL CONTRACTOR FIELD WIRING MUST ENTER ALARM CONTROL PANEL BACKBOX FOLLOWING POWER-LIMITING AND NON-POWER-LIMITING WIRING REQUIREMENTS. REFER TO INSTALLATION INSTRUCTIONS FOR MORE INFORMATION.
- ZONE CIRCUITS AND SIGNAL CIRCUITS ARE ELECTRICALLY SUPERVISED. BRANCH CIRCUITS SHALL BE LOOPED TO MAINTAIN INTEGRITY OF SUPERVISED CIRCUITS. T-TAPPING OF ZONE AND SIGNAL CIRCUITS IS NOT PERMITTED.
- REFER TO FACP MODULE DIAGRAMS, INCLUDED WITH FACP, FOR SPECIFICATIONS AND INFORMATION ON INDIVIDUAL PANEL MODULES.
- ALL FIRE ALARM WIRING SHALL TEST FREE OF OPENS, SHORTS, AND GROUNDS.
- ALL WIRING SHALL BE LABELED AND TAGGED.
- ALL WIRING SHALL MEET ALL APPLICABLE NATIONAL ELECTRICAL CODE ARTICLES FOR FIRE ALARM AND LOW-VOLTAGE WIRING.
- DO NOT USE FIRE ALARM CABINET AS TERMINAL CABINET.

FIRE ALARM SYSTEM DESIGNED BY: KIRBY ELECTRIC INC. AUBURN, WA 253-859-2000

FIRE ALARM SYSTEM INSTALLED BY: KIRBY ELECTRIC INC. AUBURN, WA

EQUIP. FOR FIRE ALARM SYSTEM SUPPLIED BY: SILENT KNIGHT INC. NORTHFORD, CT

WA STATE ELECTRICAL CONTRACTORS NUMBER: KIRBYE1809MZ

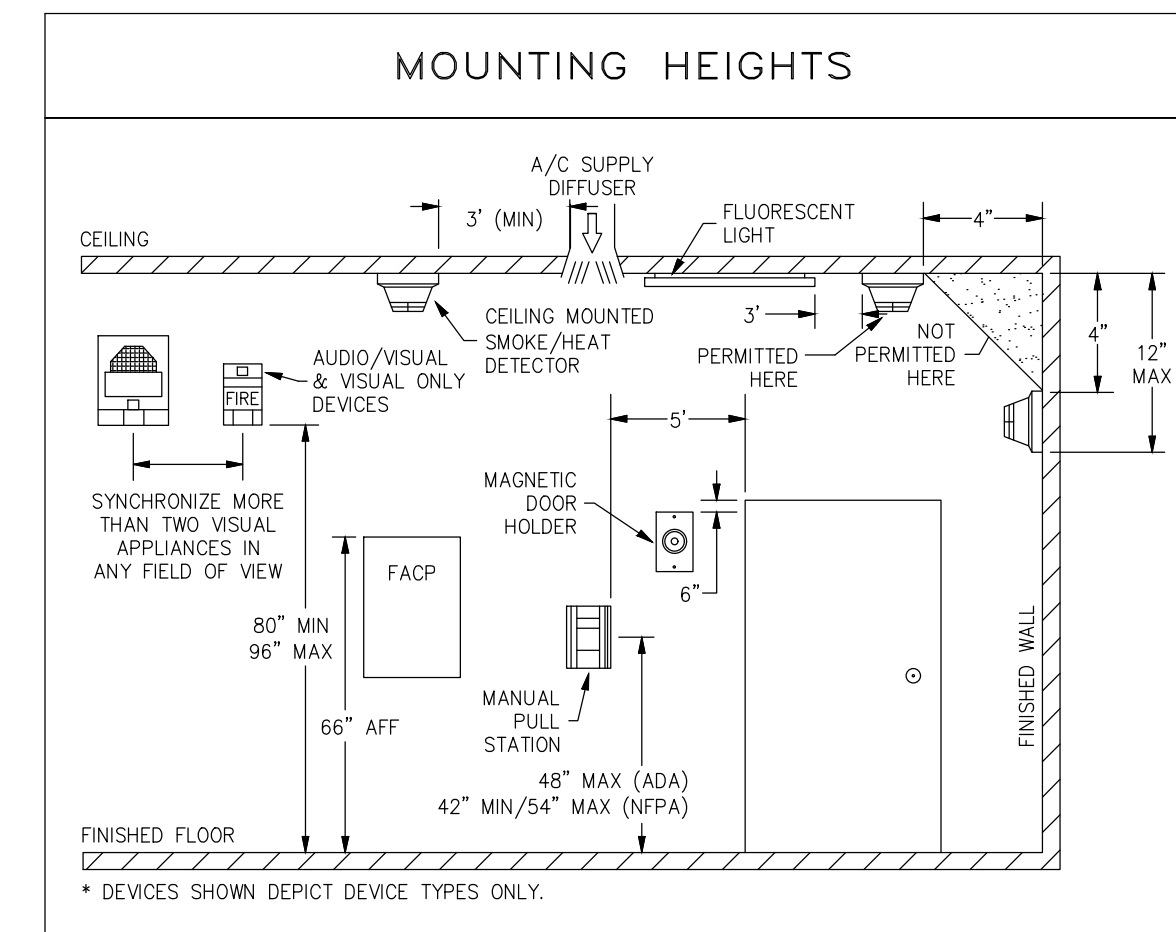
* THESE DRAWINGS DO NOT SUPERSEDE THE CONTRACT DRAWINGS AND SPECIFICATIONS. THEY ARE INTENDED AS A SUPPLEMENT ONLY AND MUST BE USED IN CONJUNCTION WITH THE CONTRACT DOCUMENTS. THEY DO NOT MODIFY THE CONTRACTORS OBLIGATIONS TO CONFORM TO THE PROJECTS ORIGINAL DESIGN CRITERIA.

CODE INFORMATION

BUILDING CODE
2021 INTERNATIONAL BUILDING CODE (B) WITH WASHINGTON STATE AMENDMENTS
2020 WASHINGTON STATE ENERGY CODE

NATIONAL FIRE PROTECTION ASSOCIATION
2022 NATIONAL FIRE ALARM CODE (NFPA 72)
2023 NATIONAL ELECTRICAL CODE (NFPA 70)
2021 INTERNATIONAL FIRE CODE (IFC) WITH WASHINGTON STATE AMENDMENTS

OCCUPANCY CLASSIFICATIONS
- R-2



DEVICE HEIGHT SCHEDULE

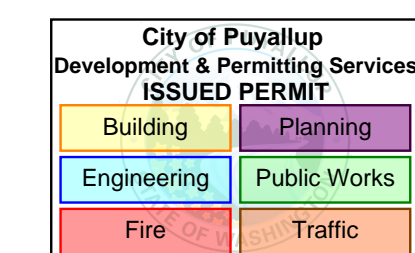
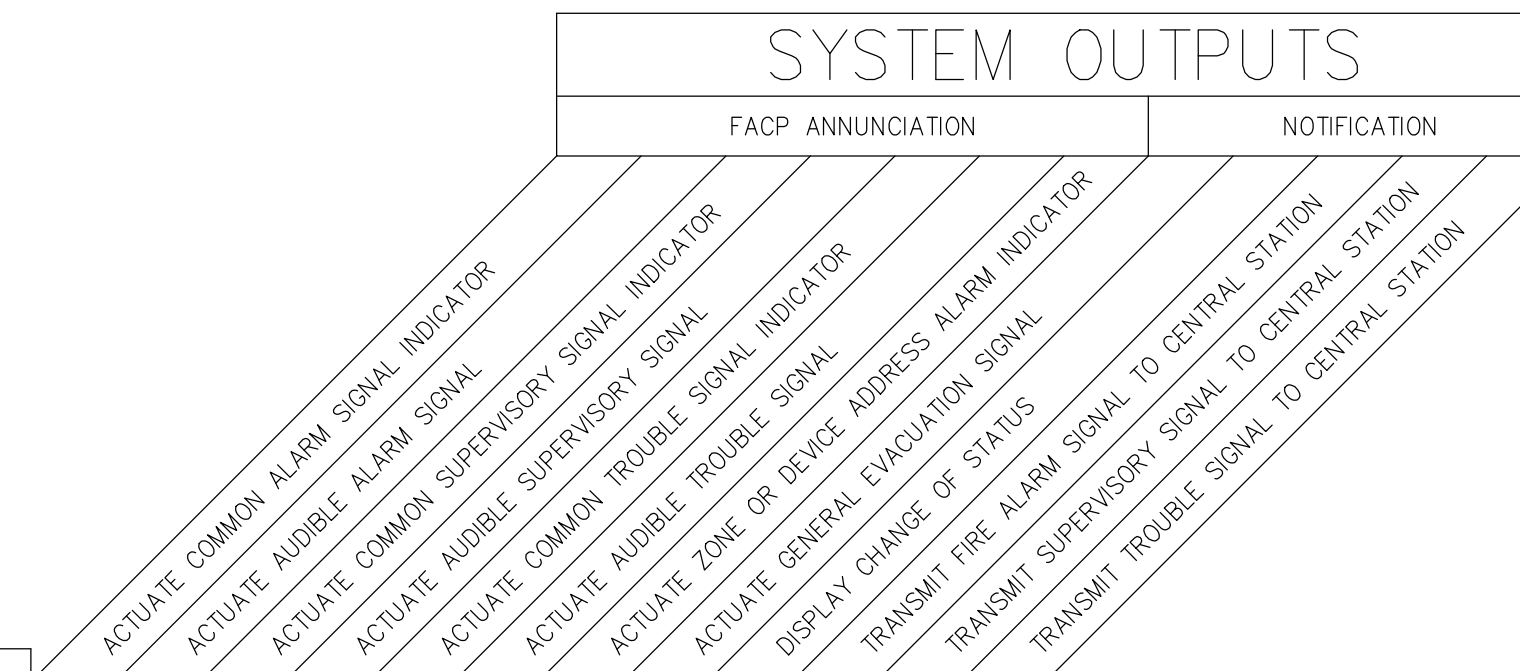
DEVICE	HEIGHT
OUTDOOR HORN/STROBE	96"
HORN/STROBE	80"
PULL STATION	48"
FIRE ALARM CONTROL PANEL	60"
POWER SUPPLY	60"
BELL	96"
ANNUNCIATOR	60"

SYSTEM INPUTS

	A	B	C	D	E	F	G	H	I	J	K	L		
1 FIRE ALARM SYSTEM AC POWER FAILURE					●	●							●	1
2 FIRE ALARM SYSTEM LOW BATTERY					●	●							●	2
3 OPEN CIRCUIT					●	●							●	3
4 GROUND FAULT					●	●							●	4
5 NOTIFICATION APPLIANCE CIRCUIT SHORT					●	●							●	5
6 BUILDING MANUAL PULL STATIONS	●	●					●	●	●	●				6
7 AREA HEAT DETECTORS	●	●					●	●	●	●				7
8 AREA SMOKE DETECTORS	●	●					●	●	●	●				8
9 SPRINKLER TAMPER SWITCH			●	●							●			9
10 SPRINKLER WATER FLOW IN BUILDING	●	●					●	●	●	●				10
11 SPRINKLER WATER FLOW IN ELEV EQUIP RM OR SHAFT	●	●					●	●	●	●				11

*NOT ALL FUNCTIONS ARE USED ON ALL SYSTEMS.

FIRE ALARM SYSTEM MATRIX
SCALE: N.T.S.



Bradley Heights Apartments - Bldg D

206 27th Ave SE, Puyallup, WA 98374

REVISIONS:

- △ (2026-02-26) INITIAL REVIEW SET
- △ (2026-02-27) PERMIT SET
- △ (2026-03-27) PRFA20260294 PERMIT CORRECTIONS

SHEET NUMBER: EFO.01

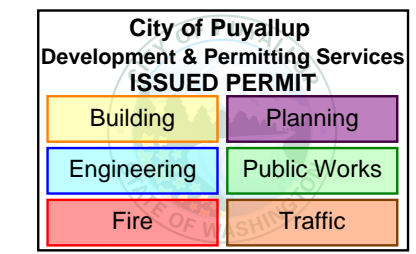
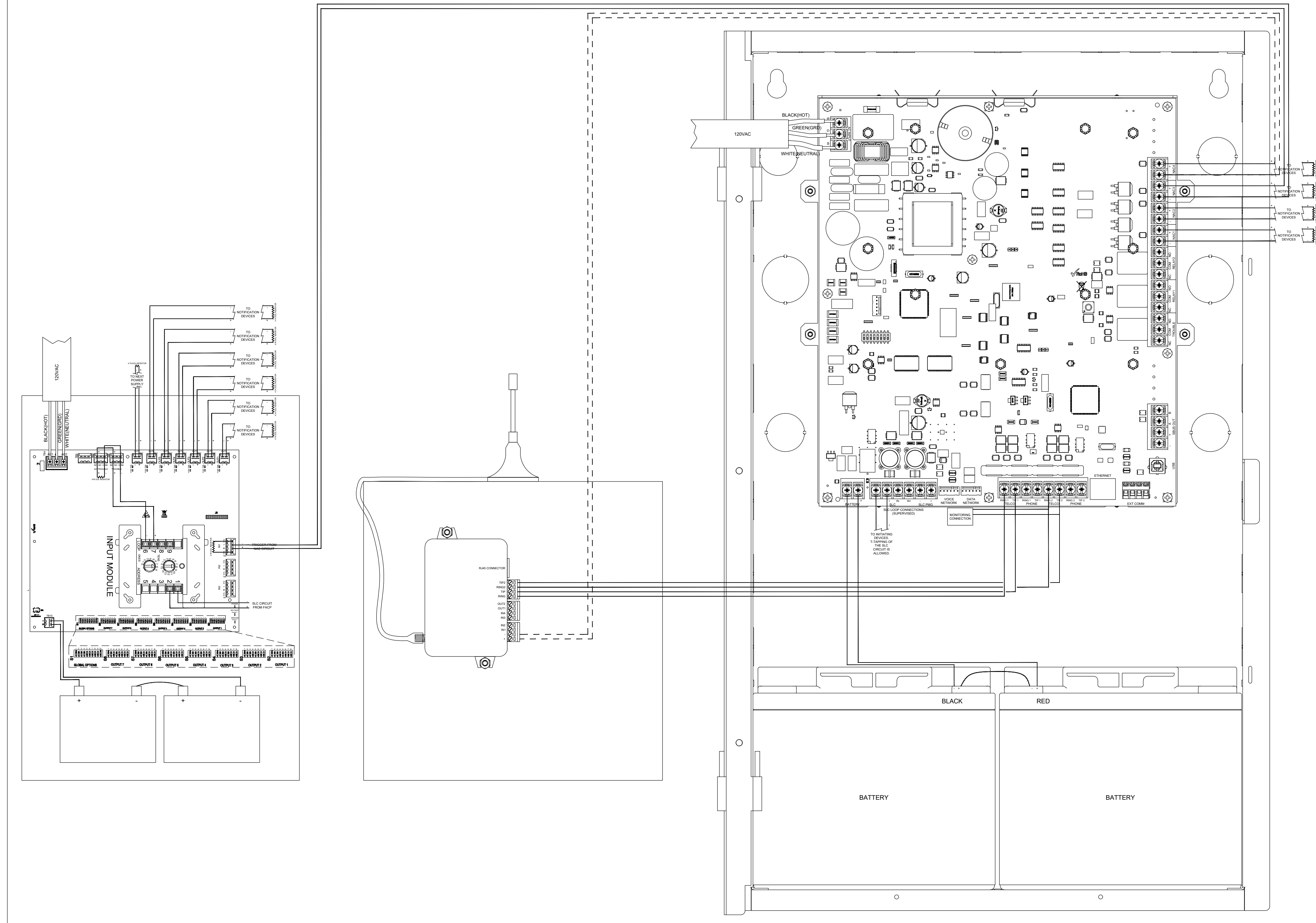
SHEET TITLE: FIRE ALARM DETAILS

PLOT DATE: 03-27-26

DESIGNED BY: A.K.

JOB NUMBER: 25-058

FIRE ALARM CONTROL PANEL SK6808, HONEYWELL HPF-PS10 &
HW-AV-LTE-M CELLULAR COMMUNICATOR WIRING DETAILS



Bradley Heights
Apartments - Bldg D

206 27th Ave SE, Puyallup, WA 98374

- REVISIONS:
- (2026-02-26) INITIAL REVIEW SET
 - (2026-02-27) PERMIT SET
 - (2026-03-27) PRFA20260294 PERMIT CORRECTIONS

SHEET NUMBER: EF0.02

SHEET TITLE:
PANEL DETAILS

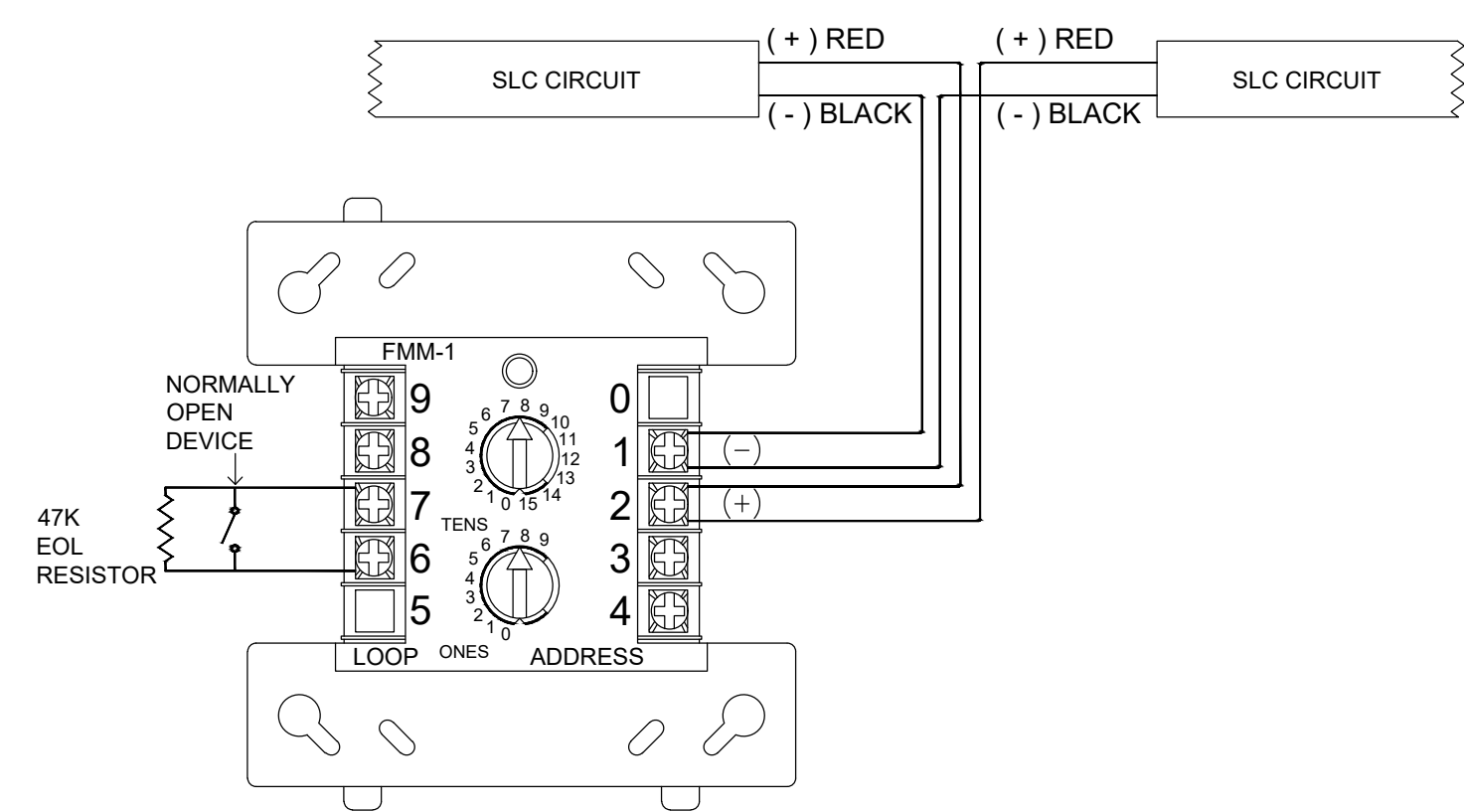
PLOT DATE: 03-27-26

DESIGNED BY: A.K.

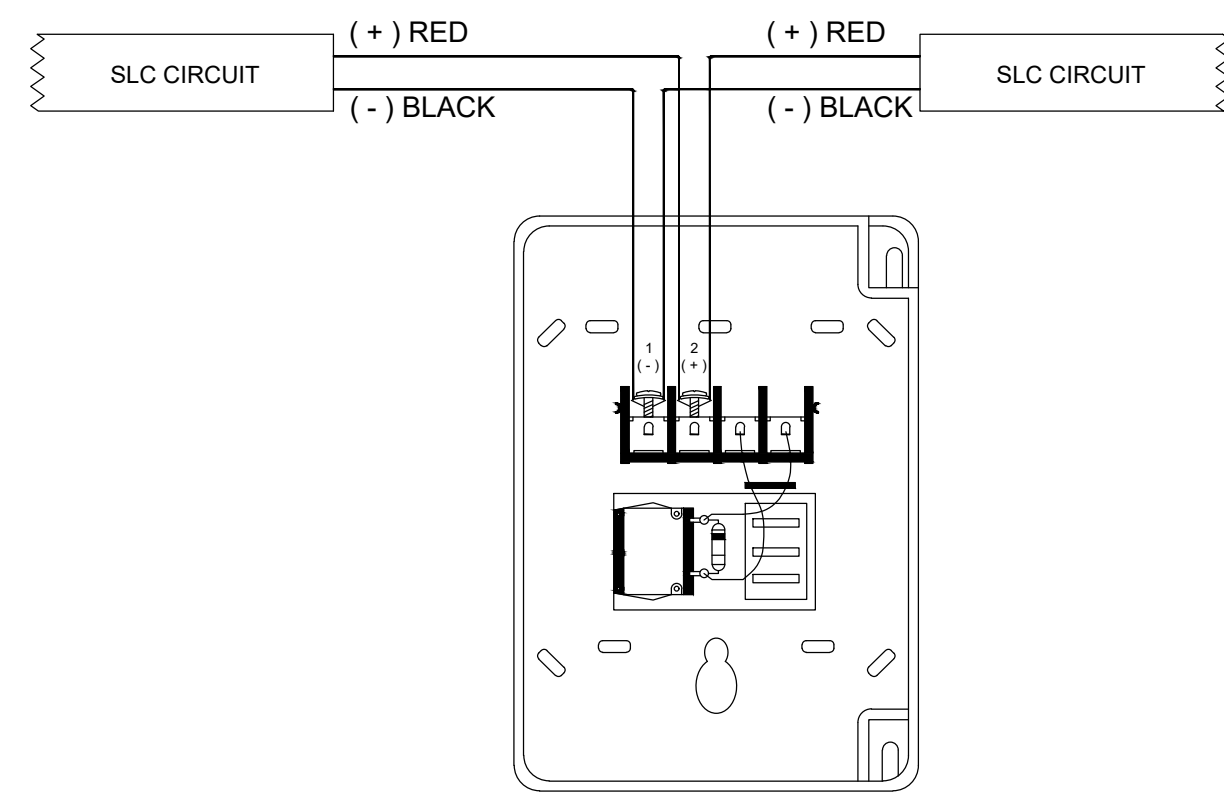
JOB NUMBER: 25-058



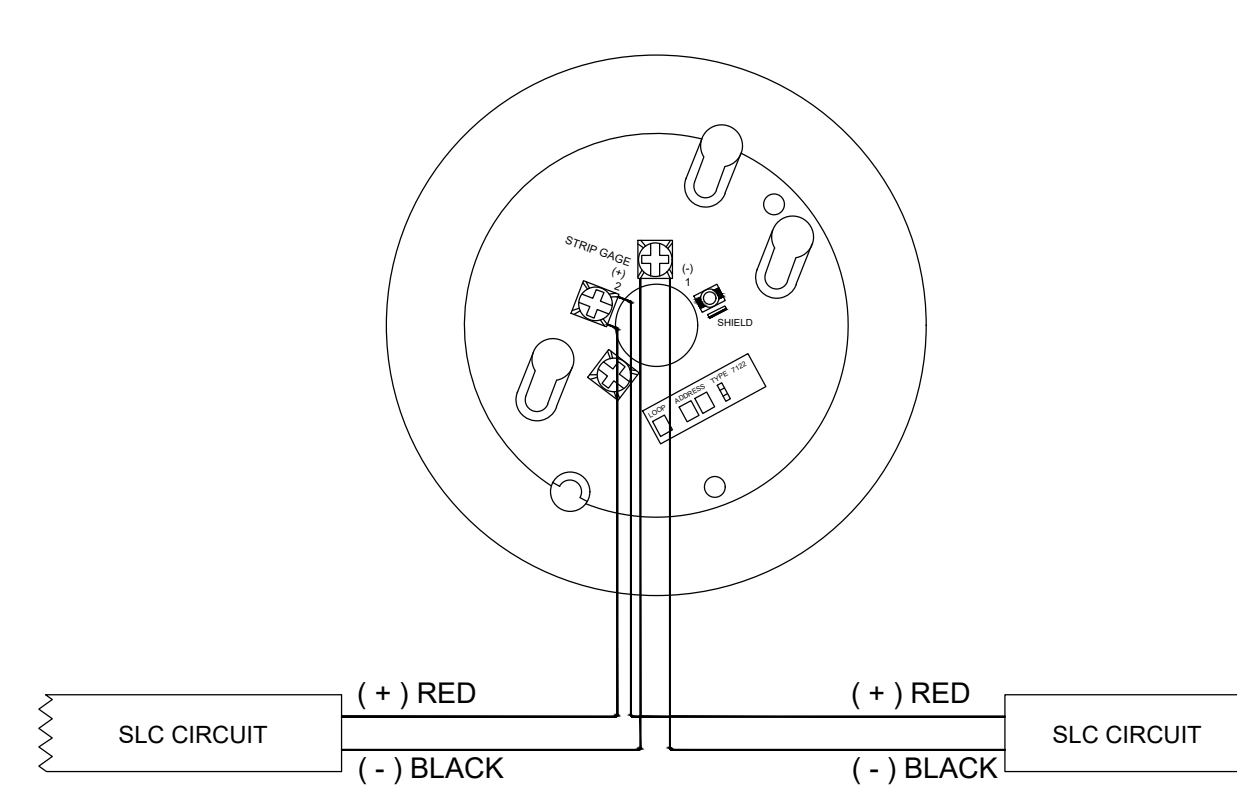
INPUT MODULE



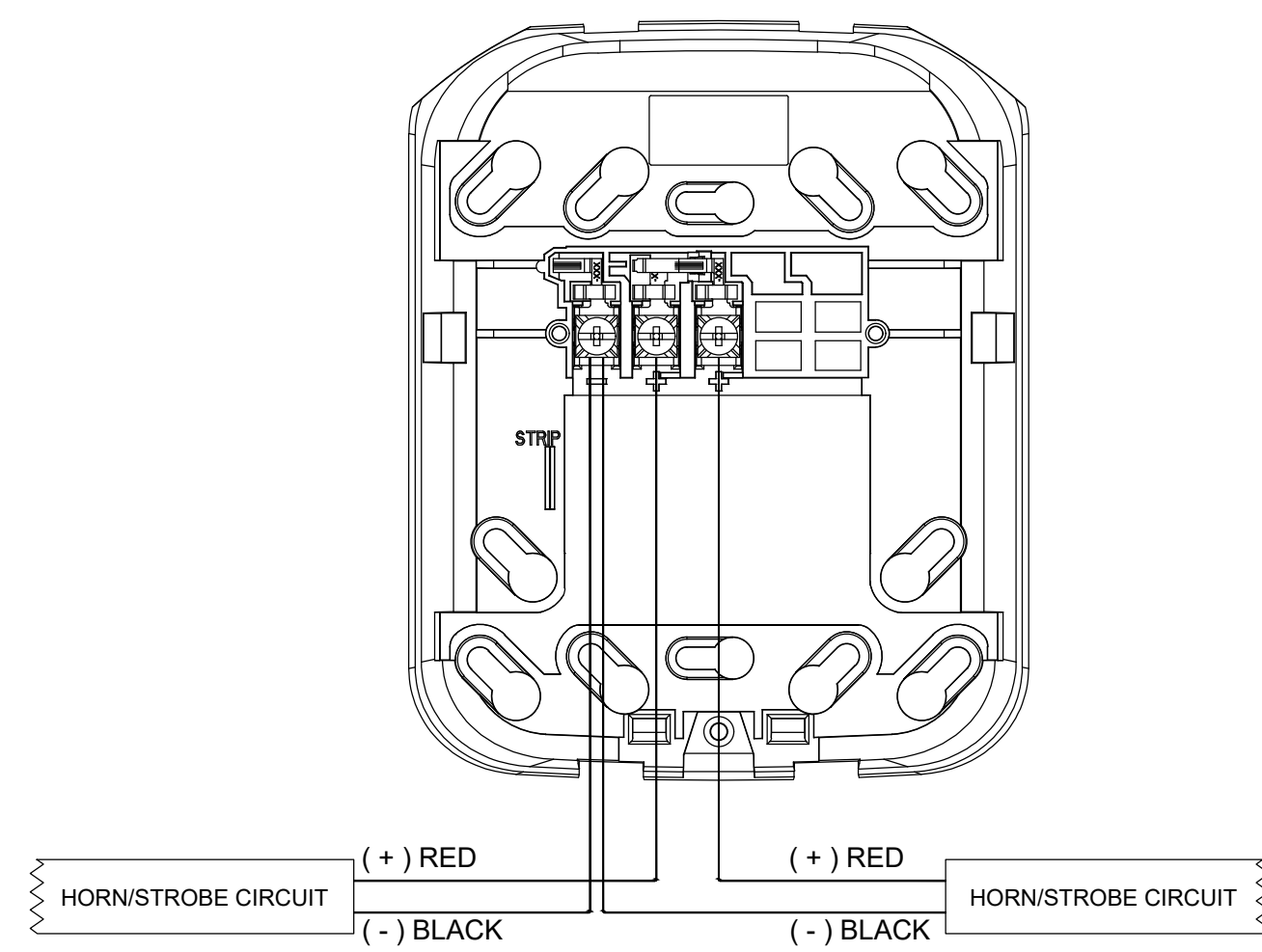
PULL STATION



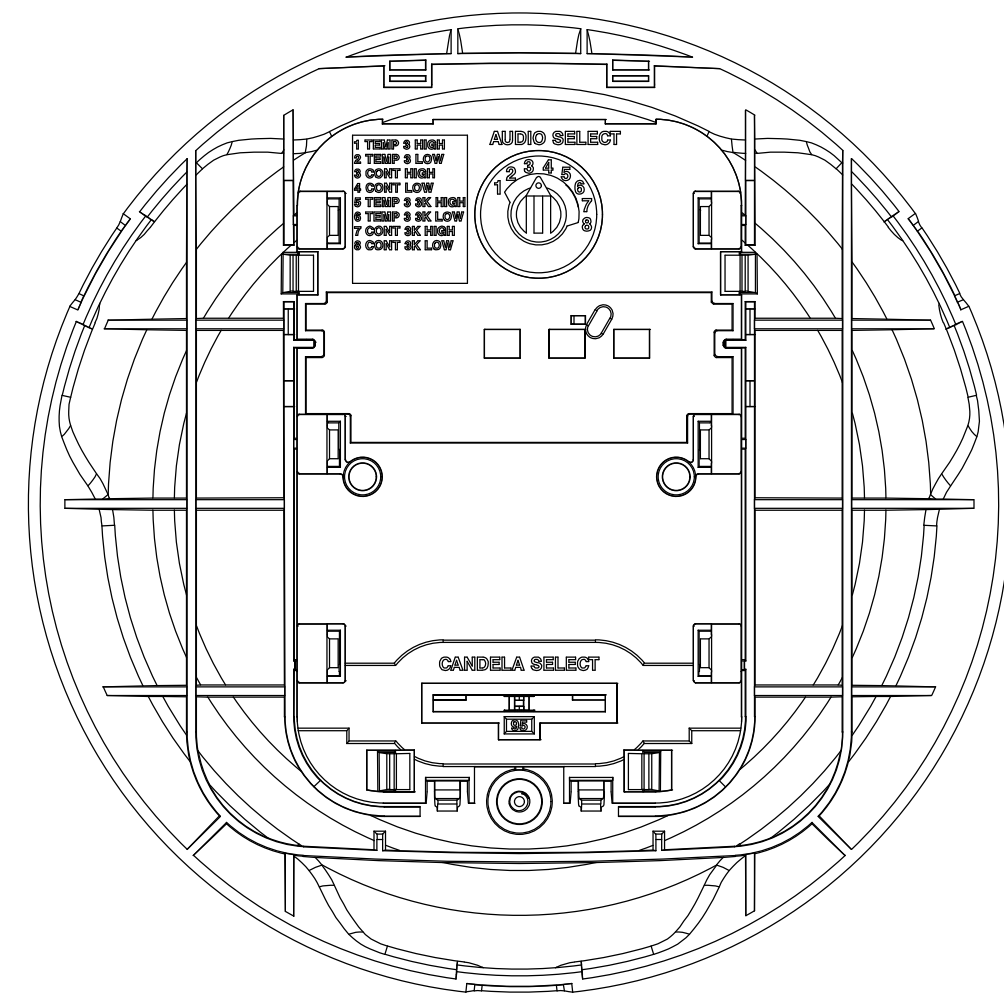
SMOKE DETECTOR



HORN/STROBE



BACKPLATE



DEVICE



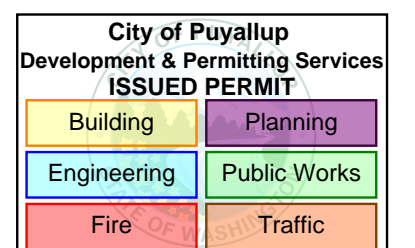
4825 15th St NW • Suite 101 • Auburn, WA 98001
P: (253) 859-2000 • F: (253) 859-2363
www.kirbyelectric.com



Bradley Heights
Apartments - Bldg D
206 27th Ave SE, Puyallup, WA 98374

REVISIONS:

- (2026-02-26) INITIAL REVIEW SET
- (2026-02-27) PERMIT SET
- (2026-03-27) PRFA20260294 PERMIT CORRECTIONS



SHEET NUMBER: EF0.03

SHEET TITLE:
DEVICE DETAILS

PLOT DATE: 03-27-26

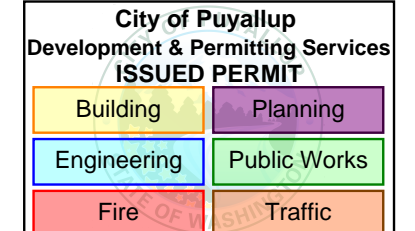
DESIGNED BY: A.K.

JOB NUMBER: 25-058

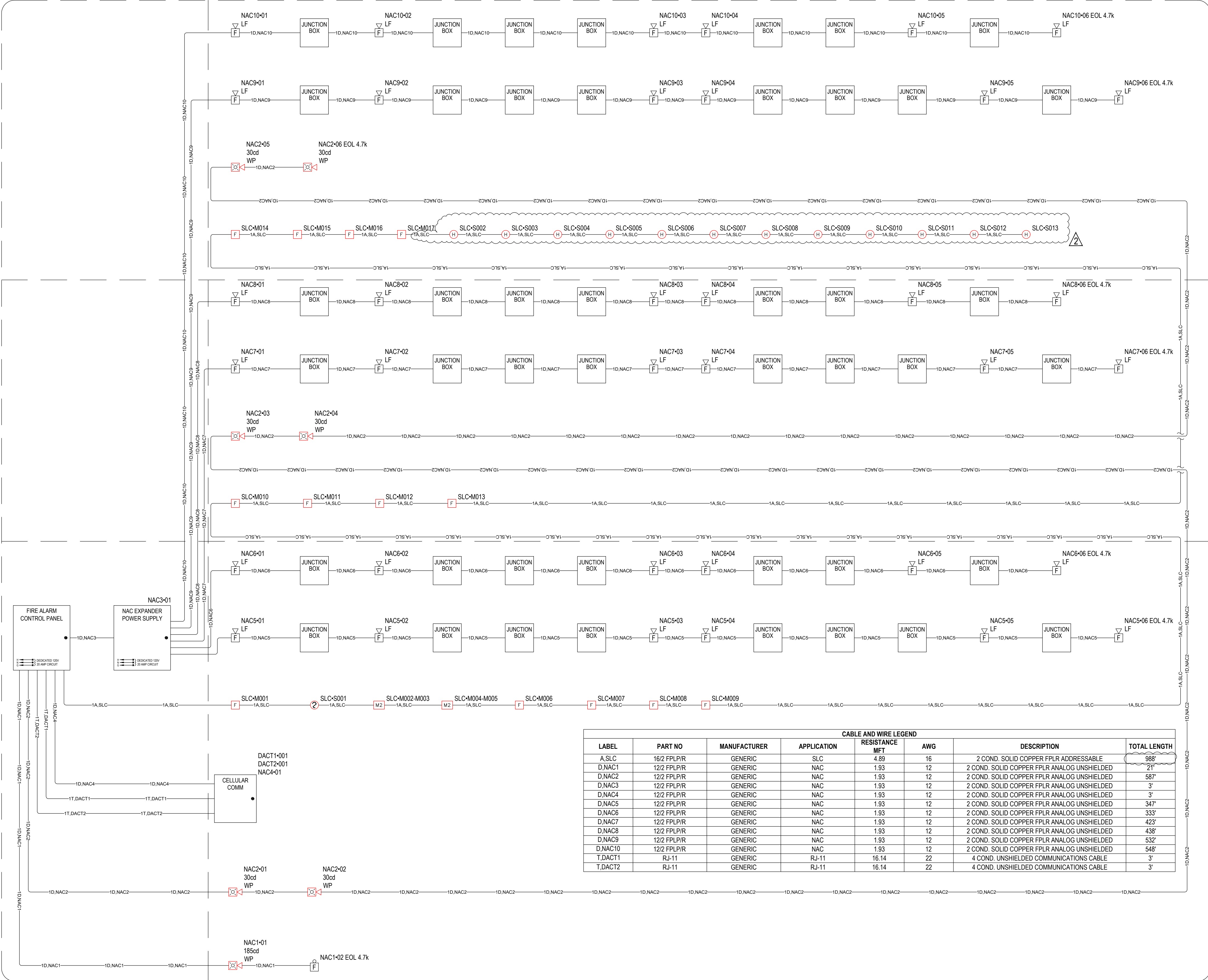


**Bradley Heights
 Apartments - Bldg D**
 206 27th Ave SE, Puyallup, WA 98374

- REVISIONS:
- (2026-02-26) INITIAL REVIEW SET
 - (2026-02-27) PERMIT SET
 - (2026-03-27) PRFA20260294 PERMIT CORRECTIONS



SLC POINTS LIST		
INITIATING DEVICES		
POINT #	DEVICE TYPE	DESCRIPTION
97-S001	SMOKE DETECTOR	SPRINKLER RISER ROOM - FACP & PS1
97-S002	HEAT DETECTOR	ATTIC - SOUTHWEST
97-S003	HEAT DETECTOR	ATTIC - SOUTHWEST
97-S004	HEAT DETECTOR	ATTIC - WEST
97-S005	HEAT DETECTOR	ATTIC - WEST
97-S006	HEAT DETECTOR	ATTIC - NORTHWEST
97-S007	HEAT DETECTOR	ATTIC - NORTHWEST
97-S008	HEAT DETECTOR	ATTIC - NORTHEAST
97-S009	HEAT DETECTOR	ATTIC - NORTHEAST
97-S010	HEAT DETECTOR	ATTIC - EAST
97-S011	HEAT DETECTOR	ATTIC - EAST
97-S012	HEAT DETECTOR	ATTIC - SOUTHEAST
97-S013	HEAT DETECTOR	ATTIC - SOUTHEAST
MODULES		
POINT #	DEVICE TYPE	DESCRIPTION
97-M001	MANUAL PULL STATION	SPRINKLER RISER ROOM
97-M002	DUAL INPUT MODULE	SPRINKLER RISER ROOM - RISER PROVISION SPARE
97-M003	DUAL INPUT MODULE	SPRINKLER RISER ROOM - RISER PROVISION SPARE
97-M004	DUAL INPUT MODULE	SPRINKLER RISER ROOM - RISER PROVISION SPARE
97-M005	DUAL INPUT MODULE	SPRINKLER RISER ROOM - RISER PROVISION SPARE
97-M006	MANUAL PULL STATION	LEVEL 1 - STAIR 1 - NORTHWEST
97-M007	MANUAL PULL STATION	LEVEL 1 - STAIR 1 - SOUTH WEST
97-M008	MANUAL PULL STATION	LEVEL 1 - STAIR 1 - SOUTHEAST
97-M009	MANUAL PULL STATION	LEVEL 1 - STAIR 1 - NORTHEAST
97-M010	MANUAL PULL STATION	LEVEL 2 - STAIR 1 - SOUTHEAST
97-M011	MANUAL PULL STATION	LEVEL 2 - STAIR 1 - SOUTHWEST
97-M012	MANUAL PULL STATION	LEVEL 2 - STAIR 1 - NORTHWEST
97-M013	MANUAL PULL STATION	LEVEL 2 - STAIR 1 - NORTHEAST
97-M014	MANUAL PULL STATION	LEVEL 3 - STAIR 1 - SOUTHEAST
97-M015	MANUAL PULL STATION	LEVEL 3 - STAIR 1 - NORTHEAST
97-M016	MANUAL PULL STATION	LEVEL 3 - STAIR 1 - NORTHWEST
97-M017	MANUAL PULL STATION	LEVEL 3 - STAIR 1 - SOUTHWEST



CABLE AND WIRE LEGEND							
LABEL	PART NO	MANUFACTURER	APPLICATION	RESISTANCE MFT	AWG	DESCRIPTION	TOTAL LENGTH
A.SLC	16/2 FPLP/R	GENERIC	SLC	4.89	16	2 COND. SOLID COPPER FPLR ADDRESSABLE	988'
D.NAC1	12/2 FPLP/R	GENERIC	NAC	1.93	12	2 COND. SOLID COPPER FPLR ANALOG UNSHIELDED	21'
D.NAC2	12/2 FPLP/R	GENERIC	NAC	1.93	12	2 COND. SOLID COPPER FPLR ANALOG UNSHIELDED	587'
D.NAC3	12/2 FPLP/R	GENERIC	NAC	1.93	12	2 COND. SOLID COPPER FPLR ANALOG UNSHIELDED	3'
D.NAC4	12/2 FPLP/R	GENERIC	NAC	1.93	12	2 COND. SOLID COPPER FPLR ANALOG UNSHIELDED	3'
D.NAC5	12/2 FPLP/R	GENERIC	NAC	1.93	12	2 COND. SOLID COPPER FPLR ANALOG UNSHIELDED	347'
D.NAC6	12/2 FPLP/R	GENERIC	NAC	1.93	12	2 COND. SOLID COPPER FPLR ANALOG UNSHIELDED	333'
D.NAC7	12/2 FPLP/R	GENERIC	NAC	1.93	12	2 COND. SOLID COPPER FPLR ANALOG UNSHIELDED	423'
D.NAC8	12/2 FPLP/R	GENERIC	NAC	1.93	12	2 COND. SOLID COPPER FPLR ANALOG UNSHIELDED	438'
D.NAC9	12/2 FPLP/R	GENERIC	NAC	1.93	12	2 COND. SOLID COPPER FPLR ANALOG UNSHIELDED	532'
D.NAC10	12/2 FPLP/R	GENERIC	NAC	1.93	12	2 COND. SOLID COPPER FPLR ANALOG UNSHIELDED	548'
T.DACT1	RJ-11	GENERIC	RJ-11	16.14	22	4 COND. UNSHIELDED COMMUNICATIONS CABLE	3'
T.DACT2	RJ-11	GENERIC	RJ-11	16.14	22	4 COND. UNSHIELDED COMMUNICATIONS CABLE	3'

PANEL LOAD SUMMARY				STANDBY CURRENT (AMPS)		ALARM CURRENT (AMPS)	
PANEL COMPONENT SUMMARY	QTY	PART NO	DESCRIPTION	CURRENT DRAW (A)	TOTAL (A)	CURRENT DRAW (A)	TOTAL
		1	6808 Main Board	Main Board	1 x 0.19	= 0.19	1 x 0.25
CIRCUIT SUMMARY	CIRCUIT						
			DACT1	1 x 0	= 0	1 x 0	= 0
			DACT2	1 x 0	= 0	1 x 0	= 0
			NAC1	1 x 0	= 0	1 x 0.2435	= 0.2435
			NAC2	1 x 0	= 0	1 x 0.228	= 0.228
			NAC3	1 x 0.014	= 0.014	1 x 0.014	= 0.014
			NAC4	1 x 0.06	= 0.06	1 x 0.2	= 0.2
			SLC	1 x 0.00865	= 0.00865	1 x 0.06455	= 0.06455
			TOTAL STANDBY CURRENT	0.27265		TOTAL ALARM CURRENT	1.00005

PANEL FACP (6808)
SUMMARY REPORT

CIRCUIT DETAILS AND CALCULATIONS									STANDBY CURRENT		ALARM CURRENT		POINT-TO-POINT VOLTAGE DROP CALCULATION SUMMARY			
SOURCE	CIRCUIT	AWG	SYMBOL	QTY	PART NO	DEVICE SETTING	CIRCUIT LENGTH	CIRCUIT RESISTANCE (Ω/ft)	CURRENT DRAW (A)	TOTAL (A)	CURRENT DRAW (A)	TOTAL (A)	STARTING CALCULATION VOLTAGE	END OF LINE VOLTAGE	VOLTAGE DROP	
6808 Main Board	NAC1	12		1	P2GRKLED	185cd	21'	0.00193	1 x 0	= 0	1 x 0.19	= 0.19	20.4v	20.38v	0.02v	
				1	SSM24-10				1 x 0	= 0	1 x 0.0535	= 0.0535				
	NAC2	12		6	P2GRKLED	30cd	587'	0.00193	6 x 0	= 0	6 x 0.038	= 0.228	20.4v	20.11v	0.29v	
	NAC3	12		1	HPF-PS10		3'	0.00193	1 x 0.014	= 0.014	1 x 0.014	= 0.014	20.4v	20.4v	0v	
	NAC4	12		1	HW-AV-LTE-M		3'	0.00193	1 x 0.06	= 0.06	1 x 0.2	= 0.2	20.4v	20.4v	0v	
	SLC	16		2	SK-MONITOR-2		988'	0.00489	2 x 0.00075	= 0.0015	2 x 0.00075	= 0.0015				
				13	SK-PULL-DA				13 x 0.00035	= 0.00455	13 x 0.00035	= 0.00455				
				12	SS-HEAT w/B300-6				12 x 0.0002	= 0.0024	12 x 0.0045	= 0.054				
				1	SS-PHOTO w/B300-6				1 x 0.0002	= 0.0002	1 x 0.0045	= 0.0045				

SECONDARY POWER SOURCE REQUIREMENTS			
			REQUIRED STANDBY TIME = 24 HOURS
			REQUIRED ALARM TIME = 5 MINUTES
		SECONDARY STANDBY LOAD	0.27265 x 24 = 6.54 AH
		SECONDARY ALARM LOAD	1.00005 x 0.08 = 0.08 AH
		STANDBY AND ALARM LOAD SUBTOTAL	6.63 AH
		DERATING FACTOR	x 1.25
		SECONDARY LOAD REQUIREMENTS (AMP HOURS)	8.28 AH

PROVIDE (2) 12V
12AH BATTERIES @
24VDC

PANEL LOAD SUMMARY				STANDBY CURRENT (AMPS)		ALARM CURRENT (AMPS)	
PANEL COMPONENT SUMMARY	QTY	PART NO	DESCRIPTION	CURRENT DRAW (A)	TOTAL (A)	CURRENT DRAW (A)	TOTAL
		1	HPF-PS10 MAIN BOARD	Fire Alarm Power Supply Main Board	1 x 0.156	= 0.156	1 x 0.185
CIRCUIT SUMMARY	CIRCUIT						
			NAC10	1 x 0	= 0	1 x 0.996	= 0.996
			NAC5	1 x 0	= 0	1 x 0.996	= 0.996
			NAC6	1 x 0	= 0	1 x 0.996	= 0.996
			NAC7	1 x 0	= 0	1 x 0.996	= 0.996
			NAC8	1 x 0	= 0	1 x 0.996	= 0.996
			NAC9	1 x 0	= 0	1 x 0.996	= 0.996
				TOTAL STANDBY CURRENT	0.156		TOTAL ALARM CURRENT

PANEL PS1
(HPF-PS10)
SUMMARY REPORT
PANEL POWER
SUPPLY MAX
CURRENT = 10A
TOTAL USED
CAPACITY = 6.161A
(61.61 %)

CIRCUIT DETAILS AND CALCULATIONS									STANDBY CURRENT		ALARM CURRENT		POINT-TO-POINT VOLTAGE DROP CALCULATION SUMMARY		
SOURCE	CIRCUIT	AWG	SYMBOL	QTY	PART NO	DEVICE SETTING	CIRCUIT LENGTH	CIRCUIT RESISTANCE (Ω/ft)	CURRENT DRAW (A)	TOTAL (A)	CURRENT DRAW (A)	TOTAL (A)	STARTING CALCULATION VOLTAGE	END OF LINE VOLTAGE	VOLTAGE DROP
HPF-PS10 MAIN BOARD	NAC10	12		6	HW-LF		550'	0.00193	6 x 0	= 0	6 x 0.166	= 0.996	20.4v	18.92v	1.48v
	NAC5	12		6	HW-LF		349'	0.00193	6 x 0	= 0	6 x 0.166	= 0.996	20.4v	19.69v	0.71v
	NAC6	12		6	HW-LF		335'	0.00193	6 x 0	= 0	6 x 0.166	= 0.996	20.4v	19.75v	0.65v
	NAC7	12		6	HW-LF		425'	0.00193	6 x 0	= 0	6 x 0.166	= 0.996	20.4v	19.4v	1v
	NAC8	12		6	HW-LF		440'	0.00193	6 x 0	= 0	6 x 0.166	= 0.996	20.4v	19.34v	1.06v
	NAC9	12		6	HW-LF		535'	0.00193	6 x 0	= 0	6 x 0.166	= 0.996	20.4v	18.98v	1.42v

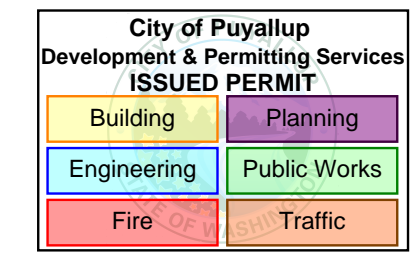
SECONDARY POWER SOURCE REQUIREMENTS			
			REQUIRED STANDBY TIME = 24 HOURS
			REQUIRED ALARM TIME = 5 MINUTES
		SECONDARY STANDBY LOAD	0.156 x 24 = 3.74 AH
		SECONDARY ALARM LOAD	6.161 x 0.08 = 0.51 AH
		STANDBY AND ALARM LOAD SUBTOTAL	4.26 AH
		DERATING FACTOR	x 1.25
		SECONDARY LOAD REQUIREMENTS (AMP HOURS)	5.32 AH

PROVIDE (2) 12V 7AH
BATTERIES @ 24VDC



Bradley Heights
Apartments - Bldg D

- REVISIONS:
- (2026-02-26) INITIAL REVIEW SET
 - (2026-02-27) PERMIT SET
 - (2026-03-27) PRFA20260294 PERMIT CORRECTIONS



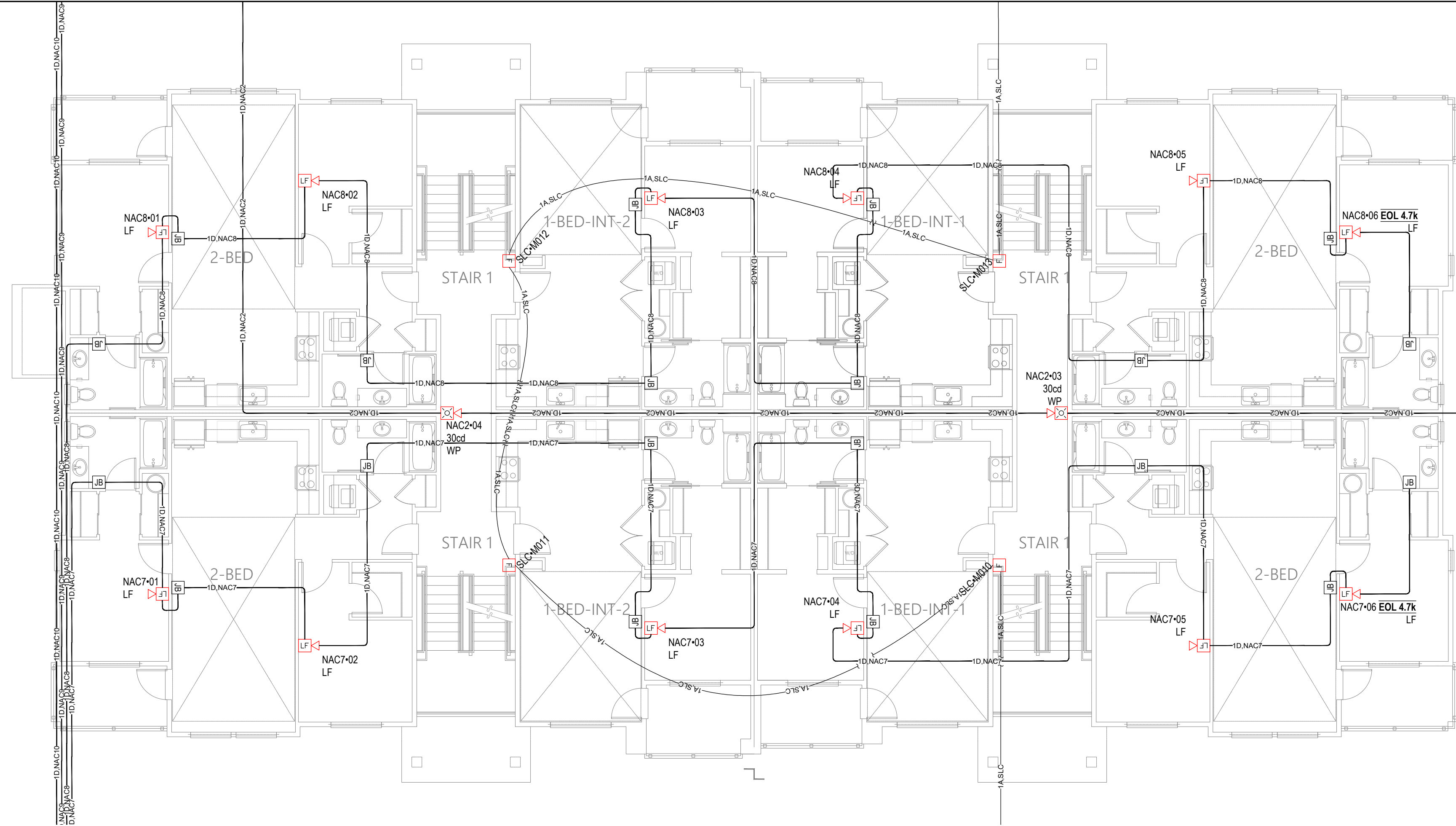
SHEET NUMBER: EF2.01

SHEET TITLE:
ONE-LINE
RISER DIAGRAM

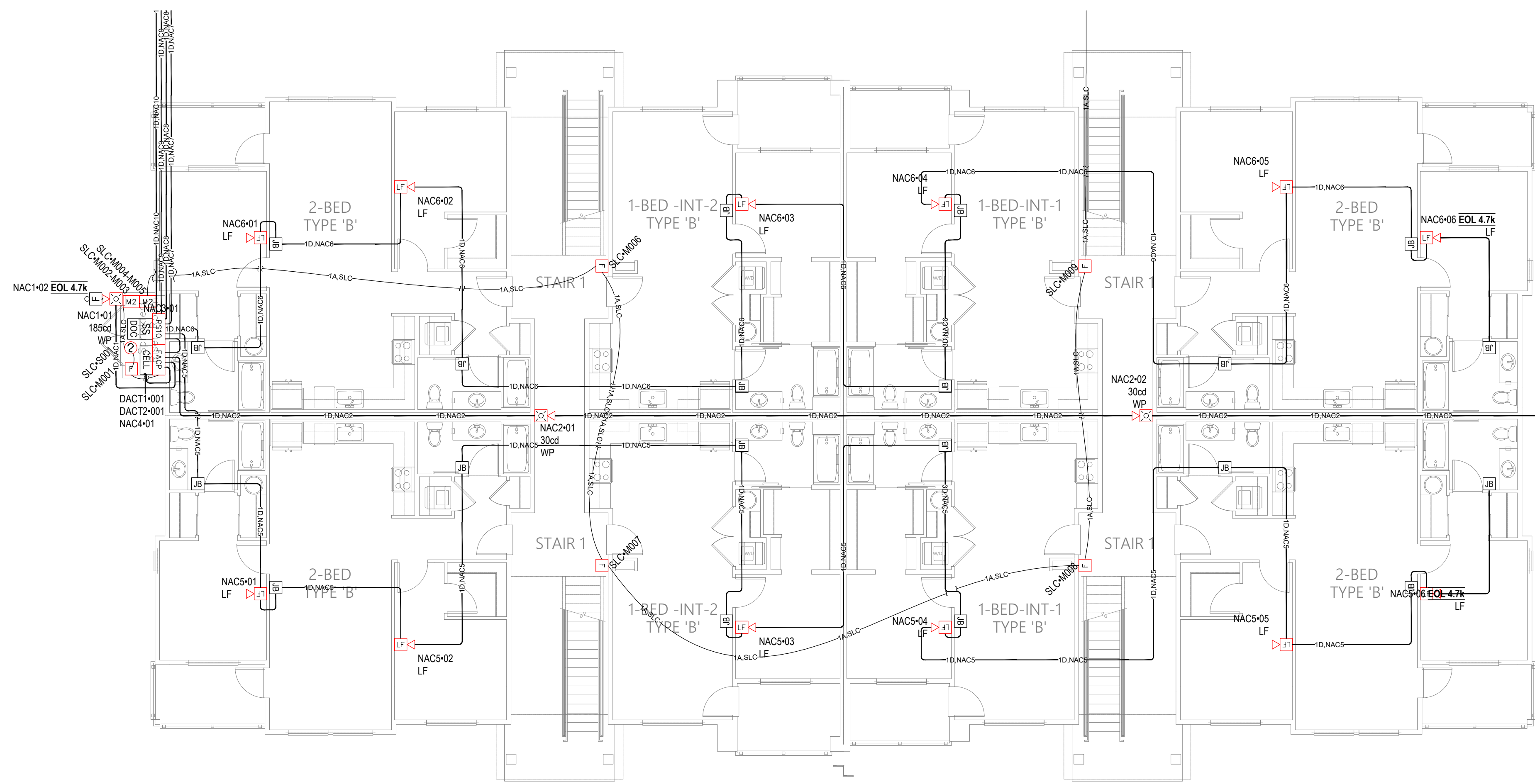
PLOT DATE: 03-27-26

DESIGNED BY: A.K.

JOB NUMBER: 25-058



2 LEVEL 2 FIRE ALARM PLAN
SCALE: 1/8" = 1'-0"



1 LEVEL 1 FIRE ALARM PLAN
SCALE: 1/8" = 1'-0"

City of Puyallup
Development & Permitting Services
ISSUED PERMIT

Building	Planning
Engineering	Public Works
Fire	Traffic

Bradley Heights Apartments - Bldg D

206 27th Ave SE, Puyallup, WA 98374

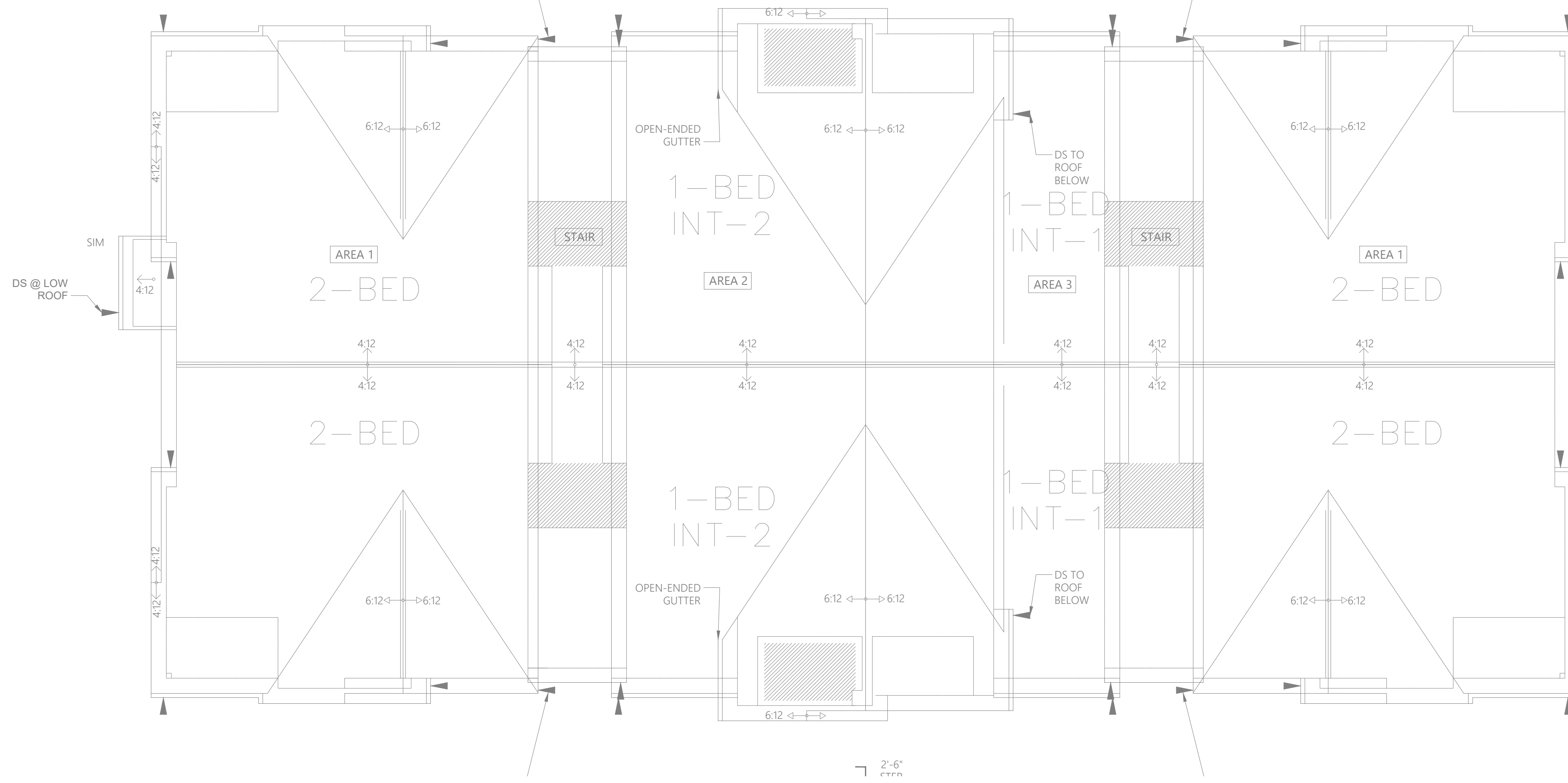
- REVISIONS:
- (2026-02-26) INITIAL REVIEW SET
 - (2026-02-27) PERMIT SET
 - (2026-03-27) PRFA20260294 PERMIT CORRECTIONS

SHEET NUMBER: EF3.01

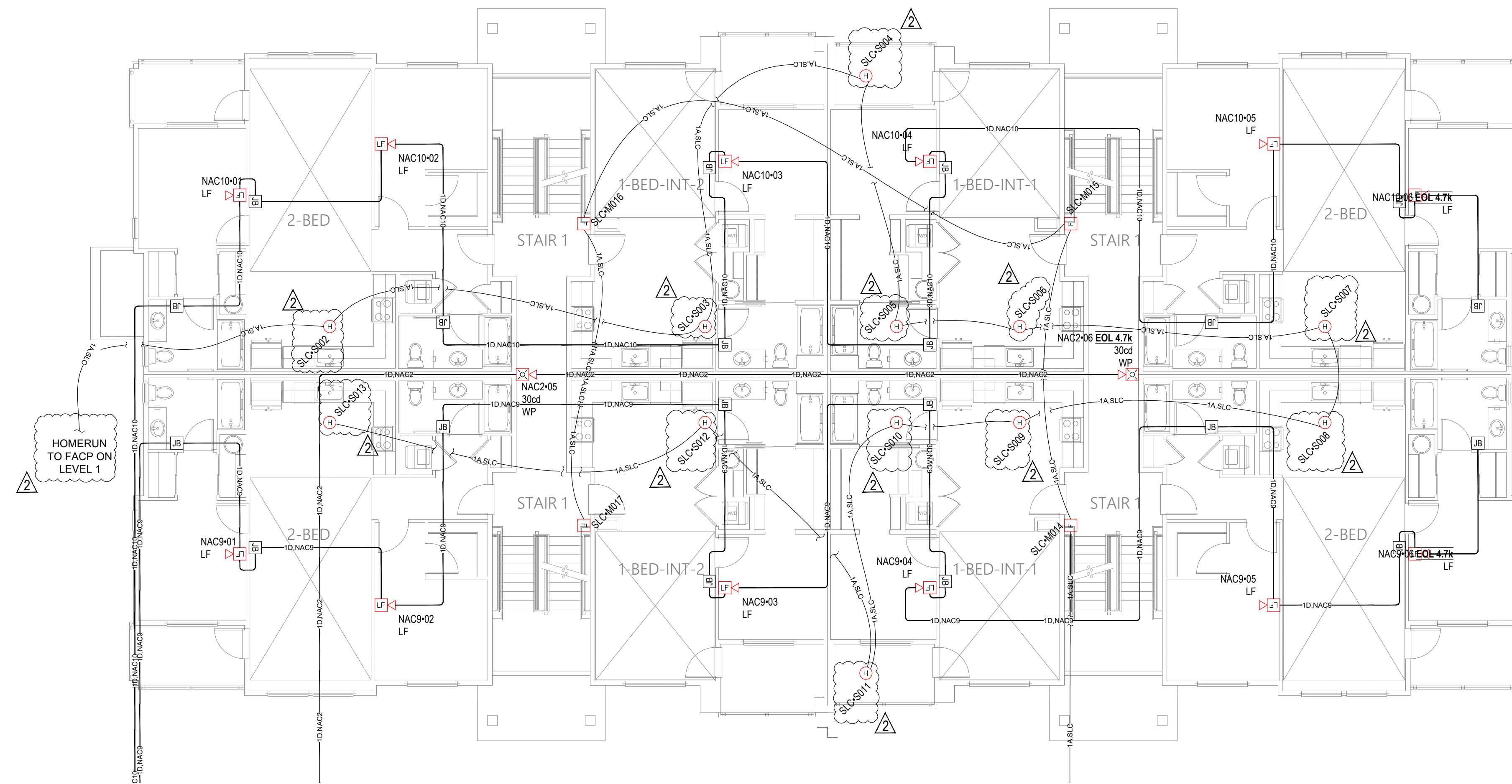
SHEET TITLE:
LEVEL 1 & 2
FIRE ALARM
PLAN

PLOT DATE: 03-27-26
DESIGNED BY: A.K.
JOB NUMBER: 25-058





2 ROOF FIRE ALARM PLAN
SCALE: 1/8" = 1'-0"



1 LEVEL 3 FIRE ALARM PLAN
SCALE: 1/8" = 1'-0"

REVISIONS:

△	(2026-02-26)	INITIAL REVIEW SET
△	(2026-02-27)	PERMIT SET
△	(2026-03-27)	PRFA20260294 PERMIT CORRECTIONS

City of Puyallup
Development & Permitting Services
ISSUED PERMIT

Building	Planning
Engineering	Public Works
Fire	Traffic

SHEET NUMBER: EF3.02

SHEET TITLE:
LEVEL 3 &
ROOF FIRE
ALARM PLAN

PLOT DATE: 03-27-26

DESIGNED BY: A.K.

JOB NUMBER: 25-058