

# GENERAL NOTES

- INSTALLATION SHALL BE ACCOMPLISHED IN STRICT COMPLIANCE WITH NFPA, LOCAL, AND STATE AHJ'S, NEC, AND CONTRACT DRAWINGS.
- RECORD DRAWINGS ARE REQUIRED AT THE TIME OF AHJ ACCEPTANCE. PATRIOT FIRE PROTECTION, INC. REQUIRES ELECTRICAL RED LINES WITH IN TWO WEEKS PRIOR TO PRIOR AHJ TESTS.
- AGREEMENT AND CONFIRMATION OF ALL MILESTONE EVENTS WILL BE MADE WITH PATRIOT FIRE PROTECTION, INC. PROJECT MANAGER, ALL FS TECHNOLOGIES FIELD SERVICES MUST BE SCHEDULED WITH PATRIOT FIRE PROTECTION, INC. PROJECT MANAGER WITH A MINIMUM OF TEN BUSINESS DAYS ADVANCE NOTICE.
- A SET OF INSTALLATION AS-BUILT DRAWINGS SHOWING ACTUAL CONDUIT AND CONDUCTOR ROUTES SHALL BE KEPT BY PROJECT FOREMAN FOR USE BY PATRIOT FIRE PROTECTION, INC. ALARM TECHNICIAN.
- FIRE ALARM CONTROL PANEL SHALL NOT BE ENEGRIZED WITHOUT THE PRESENCE OF A PATRIOT FIRE PROTECTION, INC. ALARM TECHNICIAN.
- THE FIRE ALARM SYSTEM SHALL BE MONITORED BY UNDERWRITERS LISTED MONITORING STATION BEFORE AHJS TEST.
- THE WIRING ROUTING IS DIAGRAMMATIC IN NATURE ONLY AND NOT INTENDED FOR ACTUAL CONDUIT ROUTING.
- ALL CONDUIT SIZING AND ROUTING BY ELECTRICAL CONTRACTOR PER NEC AND AHJ.
- NO LINE VOLTAGE IN SAME CONDUIT AS POWER LIMITED FIRE ALARM CABLE.
- VERIFY ALL LOCATIONS OF DEVICES WITH ELECTRICAL AND ARCHITECTURAL PLANS, SCALE AND PLACE DEVICES PER ELECTRICAL AND ARCHITECTURAL PLANS
- FIELD VERIFY WATERFLOW SWITCHES, TAMPER SWITCHES, PRESSURE SWITCHES, SMOKE DAMPERS, AND DUCT DETECTOR LOCATIONS.
- FIELD VERIFY ALL WIRING LOCATIONS AND REQUIREMENTS FOR HVAC AND FAN CONTROL.
- SMOKE DETECTORS SHALL NOT BE LOCATED WITH IN 36" OF ANY DIFFUSER
- WALL MOUNTED AUDIBLE/VISUAL APPLIANCES SHALL BE MOUNTED IN SUCH THAT THE ENTIRE LENS IS NOT LESS THAN 80" AND NOT GREATER THAN 96" ABOVE FINISHED FLOOR
- THE OPERABLE PART OF EACH MANUAL FIRE ALARM BOX SHALL NOT BE LESS THAN 3'-6" AND NOT MORE THAN 4'-0" ABOVE THE FINISHED FLOOR.
- NO DETECTORS SHALL BE INSTALLED UNTIL AFTER FINAL CONSTRUCTION CLEAN-UP, DETECTORS THAT HAVE BEEN INSTALLED PRIOR TO CLEAN-UP MUST BE CLEANED OR REPLACED AND WILL BE INVOICED ON A TIME AND MATERIAL BASIS.
- A DEDICATED BRANCH CIRCUIT OF ONE OF THE FOLLOWING SHALL SUPPLY PRIMARY POWER.
  - COMMERCIAL LIGHT AND POWER.
  - AN ENGINE-DRIVEN GENERATOR OR EQUIVALENT WHERE A PERSON SPECIFICALLY TRAINED IN ITS OPERATIONS IS ON DUTY AT ALL TIMES.
  - AN ENGINE-DRIVEN GENERATOR OR EQUIVALENT ARRANGED FOR COGENERATION WITH COMMERCIAL LIGHT AND POWER WHERE A PERSON SPECIFICALLY TRAINED IN ITS OPERATION IS ON DUTY AT ALL TIMES.
- ALL CIRCUITS WILL BE PROPERLY TAGGED AND TESTED FOR OPENS, SHORTS, GROUNDS, AND PROPER "END-TO-LINE" RESISTANCE. EACH CIRCUITS METER READING MUST BE DOCUMENTED AND PRESENTED TO PATRIOT FIRE PROTECTION, INC. ALARM TECHNICIAN UPON ARRIVAL ONSITE FOR STARTUP AND CHECKOUT.
- NO TAPPING OF SIGNALING OR INITIATING ZONE CIRCUITS ARE ALLOWED. T-TAPPING OF STYLE 4 ADDRESSABLE CIRCUITS IS ALLOWED PROVIDING A SPLICE IS PROFESSIONALLY INSTALLED, POLARITY IS OBSERVED, AND SHIELDS ARE CONTINUOUS AND FREE OF GROUNDS. SHIELDS MUST BE TERMINATED AT THE FIRE ALARM CONTROL PANEL ONLY. CABLE SHIELDS SHALL BE SPLICED TOGETHER AT EVERY JUNCTION BETWEEN THE FIRE ALARM CONTROL PANEL AND THE LAST DEVICE ON EACH CABLE RUN. SHIELDS AND OTHER FIRE ALARM CONDUCTORS (EXCEPT POWER GROUNDS) SHALL BE INSULATED AND COMPLETELY FREE FROM CONDUIT OR EARTH GROUNDS. SHIELDS WILL BE TIED TO GROUND ONLY AT THE FIRE ALARM CONTROL PANEL.

# SCOPE OF WORK

PERFORM ADDRESSABLE UPGRADE OF FIRE ALARM PANEL IN BUILDING J, REPLACING EXISTING ESL 1500 PANEL WITH A NEW POTTER AFC-50 FIRE ALARM CONTROL PANEL.  
 (1): POTTER AFC-50 FIRE ALARM CONTROL PANEL  
 (1): SMOKE DETECTOR, (1) PULL STATION, (2) INPUT MODULES FOR SPRINKLER EQUIPMENT  
 (1): LOCKING DOCUMENT BOX  
 \* EXISTING WIRE TO BE UTILIZED  
 \* EXISTING MONITORING TO REMAIN

# USE & OCCUPANCY CLASSIFICATION

- ASSEMBLY (A)       A-1    A-2    A-3    A-4    A-5
- BUSINESS (B)
- EDUCATIONAL (E)
- FACTORY & INDUSTRIAL (F)    F-1    F-2
- HIGH HAZARD (H)       H-1    H-2    H-3    H-4    H-5
- INSTITUTIONAL (I)       I-1    I-2    I-3    I-4
- MERCANTILE (M)
- RESIDENTIAL (R)       R-1    R-2    R-3    R-4
- STORAGE (S)       S-1    S-2    S-3    S-4
- UTILITY & MISCELLANEOUS (U)

# AUTOMATIC SPRINKLER PROTECTION

- NONE       PARTIAL       FULL

# DEVICE LEGEND

SYMBOL	QUANTITY	MANUFACTURER	PART NO	DESCRIPTION
[FACU]	1	POTTER	AFC-50	FIRE ALARM CONTROL PANEL
[DM] 2	1	POTTER	PAD100-DIM	DUAL INPUT MODULE
[M]	1	POTTER	PAD100-SIM	SINGLE INPUT MODULE
[F]	1	POTTER	PAD100-PSSA	ADDRESSABLE PULL STATION SINGLE ACTION
[S] 6DB	1	POTTER	PAD300-PD W/PAD300-6DB	PHOTOELECTRIC SMOKE DETECTOR WITH 6" STANDARD BASE

# OPERATION MATRIX

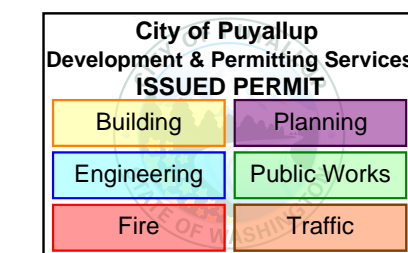
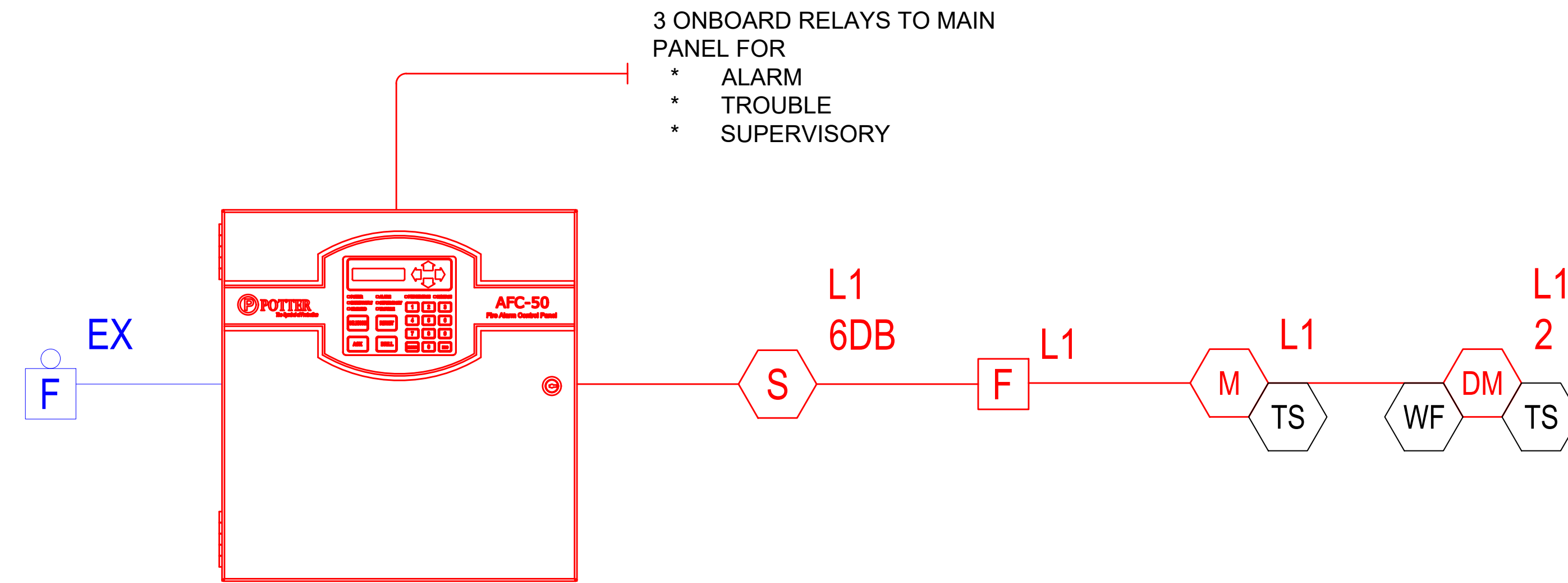
	MANUAL PULL STATION	SMOKE DETECTOR (SPD)	TAMPER	SYSTEM TROUBLE	AC FIRE
DISPLAY OF AN ALARM EVENT AT THE FACP	X	X	X		
DISPLAY OF A SUPERVISORY EVENT AT THE FACP				X	
DISPLAY OF A TROUBLE EVENT AT THE FACP				X	X
TRANSMIT AN ALARM SIGNAL TO THE CENTRAL STATION	X	X	X		
TRANSMIT A SUPERVISORY SIGNAL TO THE CENTRAL STATION				X	
TRANSMIT A TROUBLE SIGNAL TO THE CENTRAL STATION				X	X
INITIATE BUILDING NOTIFICATION (A/V DEVICES)	X	X	X		

# DRAWING ACCEPTANCE

THIS DRAWING IS TO BE USED FOR THE PURPOSE OF PLACING AND LOCATING PATRIOT FIRE PROTECTION, INC. FIRE ALARM DEVICES AND IS NOT TO BE USED FOR ANY OTHER PURPOSES.



VICINITY MAP  
NOT TO SCALE



**City of Puyallup**  
**Fire**  
**REVIEWED**  
**FOR**  
**COMPLIANCE**  
 DDrake  
 04/13/2026  
 7:37:19 AM

THE APPROVED CONSTRUCTION PLANS AND ALL ENGINEERING MUST BE POSTED ON THE JOB AT ALL INSPECTIONS IN A VISIBLE AND READILY ACCESSIBLE LOCATION.

Approval of submitted plans is not an approval of omissions or oversight by this office or noncompliance with any applicable regulations of local government. The contractor is responsible for making sure that the building complies with all applicable building codes and regulations of the local government.

RISER DIAGRAM  
NOT TO SCALE

STATE CERTIFICATION

SHEET INDEX	DESCRIPTION	REV	GENERAL SHEET	DEVICE LOCATIONS AND CALCULATIONS	PRODUCT TYPICALS
FA001					
FA101					
FA102					

NO	DATE	BY	DESCRIPTION

**SYSTEM DESIGN CODES**

INTERNATIONAL BUILDING CODE (IBC 2021 EDITION)  
 INTERNATIONAL FIRE CODE (IFC 2021 EDITION)  
 NATIONAL ELECTRICAL CODE (NFPA 70 2020 EDITION)  
 ADA INTERNATIONAL CODE ANSII 117.1  
 NATIONAL FIRE ALARM AND SIGNALING CODE (NFPA 72 2019 EDITION)

**INSTALLATION COMPANY**

PATRIOT FIRE PROTECTION, INC.  
 2707 70TH AVE E, TACOMA, WA 98424

**MONITORING COMPANY**

SECURITAS  
 4500 3RD AVE SE  
 LACEY, WA 98503

CONTRACT WITH:

PROJECT NAME:  
**Meridian Point Apartments**  
 BUILDING J  
 407 Valley Ave NE  
 Puyallup, WA 98372

**PATRIOT**  
**FIRE PROTECTION, INC.**

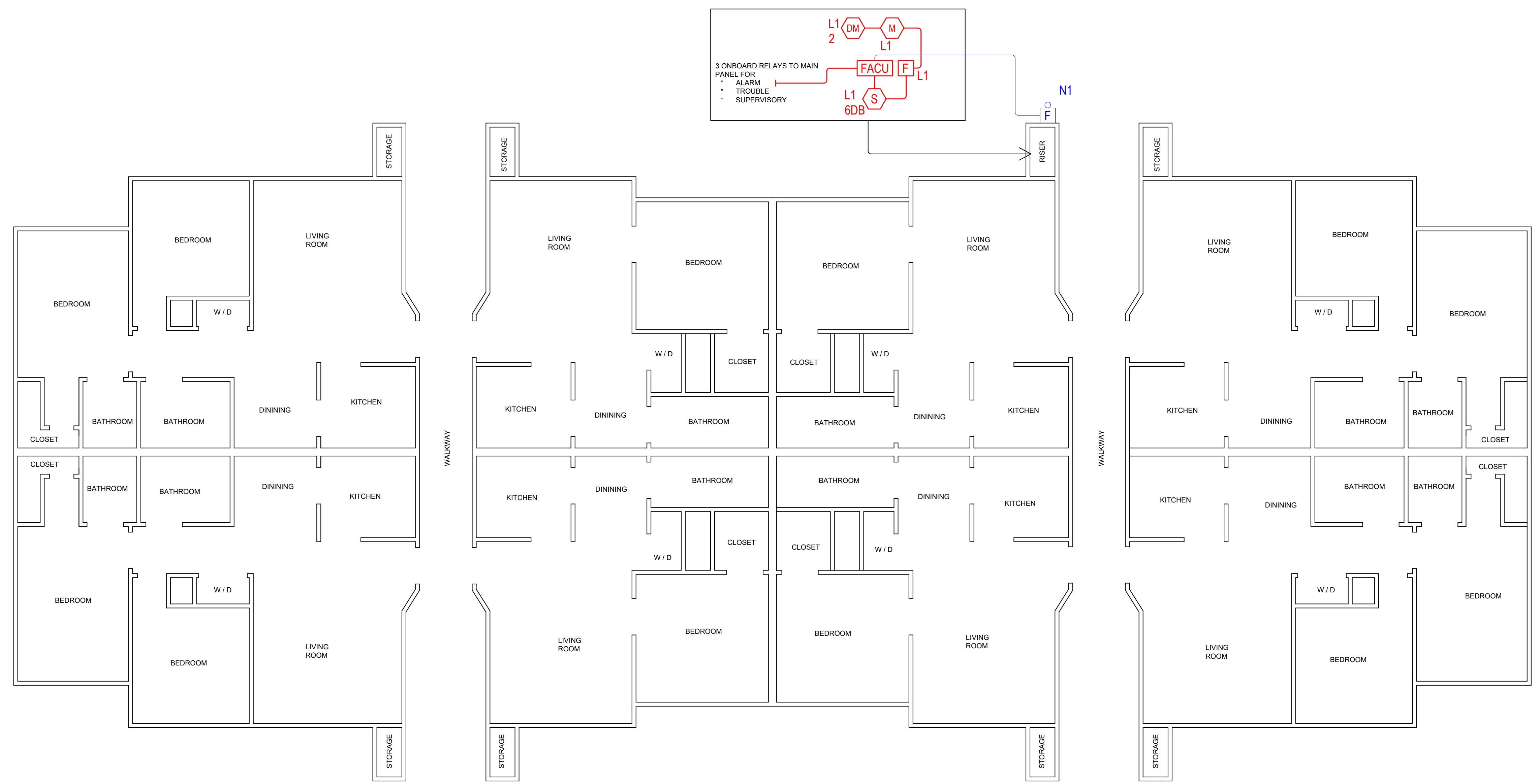
2707 70th Ave E.  
 TACOMA, WA 98424

PATRIFFB370Q  
 WWW.PATRIOTFIRE.COM  
 Erick.Escobedo@patriotfire.com

TEL: (253) 532-0967  
 FAX: (253) 922-6150

DESIGNER	ERICK E.	SHEET	FA001
DATE	3/18/26	1 OF 3	
JOB NO.	19-1084		

PANEL (AFC-50) BATTERY CALCULATION (SECONDARY POWER SOURCE REQUIREMENTS)											
PANEL COMPONENTS					STANDBY CURRENT				SECONDARY ALARM CURRENT		
					QTY	PART NO.	DESCRIPTION	CURRENT DRAW (A)	TOTAL (A)	CURRENT DRAW (A)	TOTAL (A)
					1	AFC-50	FIRE ALARM CONTROL PANEL	0	0	0	0
					1	AFC-50 MAIN BOARD	FIRE ALARM CONTROL PANEL MAIN BOARD	0.13	0.13	0.22	0.22
CIRCUIT	MAX CARD AMPS	USED CARD AMPS	SPARE CARD AMPS	SYMBOL	QTY	PART NO.	DESCRIPTION	CURRENT DRAW (A)	TOTAL (A)	CURRENT DRAW (A)	TOTAL (A)
L1	N/A	0.020980		AIM 2	1	PAD100-DIM	DUAL INPUT MODULE	0.00024	0.00024	0.00024	0.00024
				F	1	PAD100-PSSA	ADDRESSABLE PULL STATION SINGLE ACTION	0.0002	0.0002	0.0002	0.0002
				AIM	1	PAD100-SIM	SINGLE INPUT MODULE	0.00024	0.00024	0.00024	0.00024
				S 6DB	1	PAD300-PD W/PAD300-6DB	PHOTOELECTRIC SMOKE DETECTOR WITH 6" STANDARD BASE	0.0003	0.0003	0.0003	0.0003
N1				F	1	PDC-10-24	10" BELL	0	0	0.02	0.02
								TOTAL STANDBY (A)	0.13098	TOTAL ALARM (A)	0.24098
								REQUIRED STANDBY TIME (HOURS)		24	
								REQUIRED ALARM TIME (MINUTES)		5	
SECONDARY STANDBY LOAD (A)								0.13098			3.16
SECONDARY ALARM LOAD (A)								0.24098			1.25
STANDBY AND ALARM SUBTOTAL (AMP HOURS)										3.16	
DERATING FACTOR										1.25	
SECONDARY LOAD REQUIREMENTS (AMP HOURS)										3.95	
PROVIDE (2) 12V 8AH BATTERIES											
*BATTERY BOX SIZE CAPACITY NOT SPECIFIED. REFER TO MANUFACTURER DOCUMENTATION.											



STATE CERTIFICATION

Jeff Harasimowitz  
Fire Alarm Systems - Level III  
NICET Certification Number 160601  
Exp: 11/01/2028  
Authorizing Signature: *[Signature]*

SHEET INDEX	DESCRIPTION	REVISIONS	
		NO	DATE
GENERAL SHEET	DEVICE LOCATIONS AND CALCULATIONS		
PRODUCT TYPICALS			

**SYSTEM DESIGN CODES**

- INTERNATIONAL BUILDING CODE (IBC 2021 EDITION)
- INTERNATIONAL FIRE CODE (IFC 2021 EDITION)
- NATIONAL ELECTRICAL CODE (NFPA 70 2020 EDITION)
- ADA INTERNATIONAL CODE ANSII 117.1
- NATIONAL FIRE ALARM AND SIGNALING CODE (NFPA 72 2019 EDITION)

**INSTALLATION COMPANY**

PATRIOT FIRE PROTECTION, INC.  
2707 70TH AVE E, TACOMA, WA 98424

**MONITORING COMPANY**

SECURITAS  
4500 3RD AVE SE  
LACEY, WA 98503

CONTRACT WITH:

PROJECT NAME:  
**Meridian Point Apartments**  
BUILDING J  
407 Valley Ave NE  
Puyallup, WA 98372

**PATRIOT FIRE PROTECTION, INC.**  
2707 70th Ave E, Tacoma, WA 98424  
TEL: (253) 532-0967  
FAX: (253) 922-6150

DESIGNER	ERICK E.	SHEET	2 OF 3	FA101
DATE	XXXXXX			
JOB NO.	XXXXXX			

**FLOOR PLAN**  
3/16" = 1'-0"

