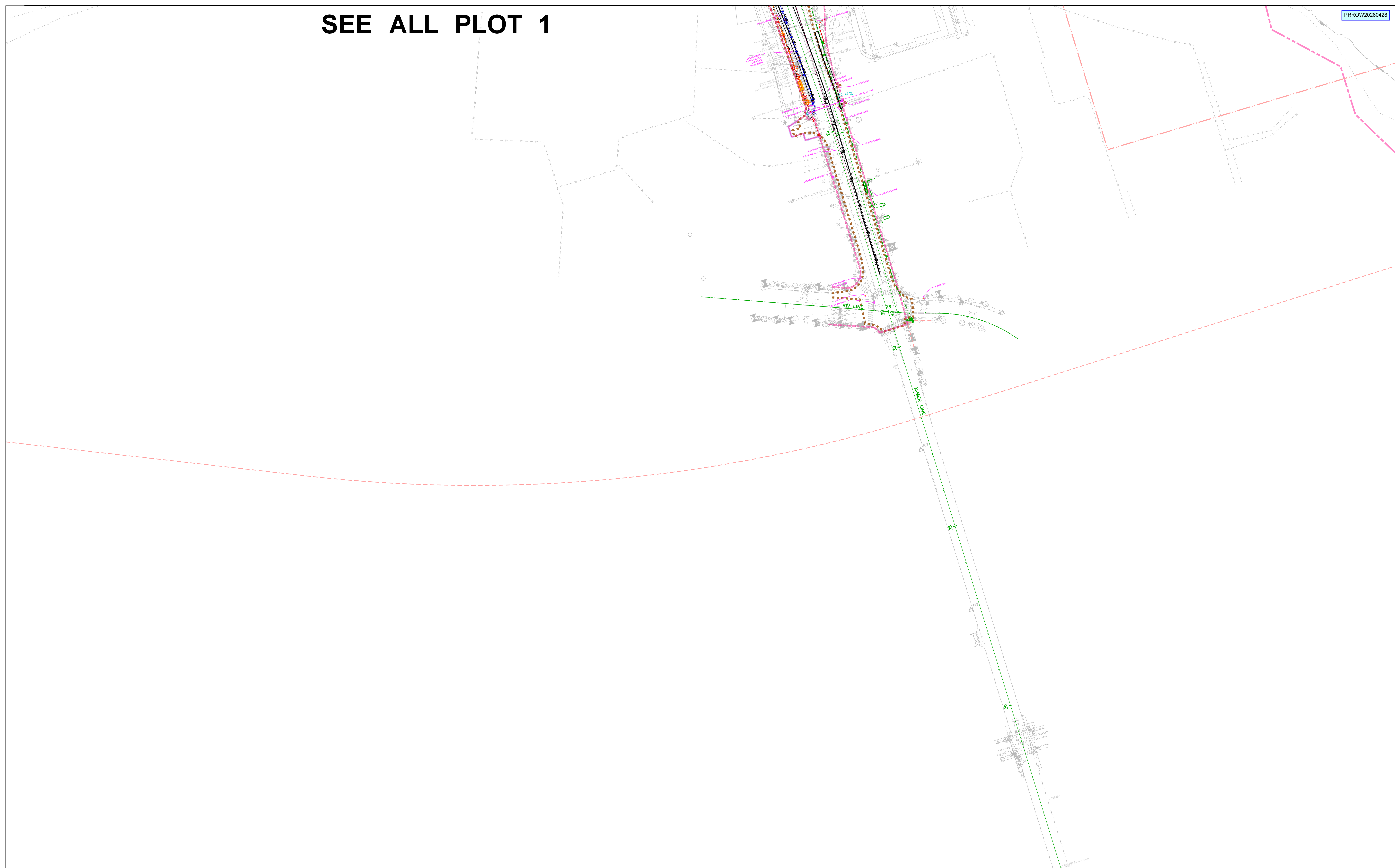
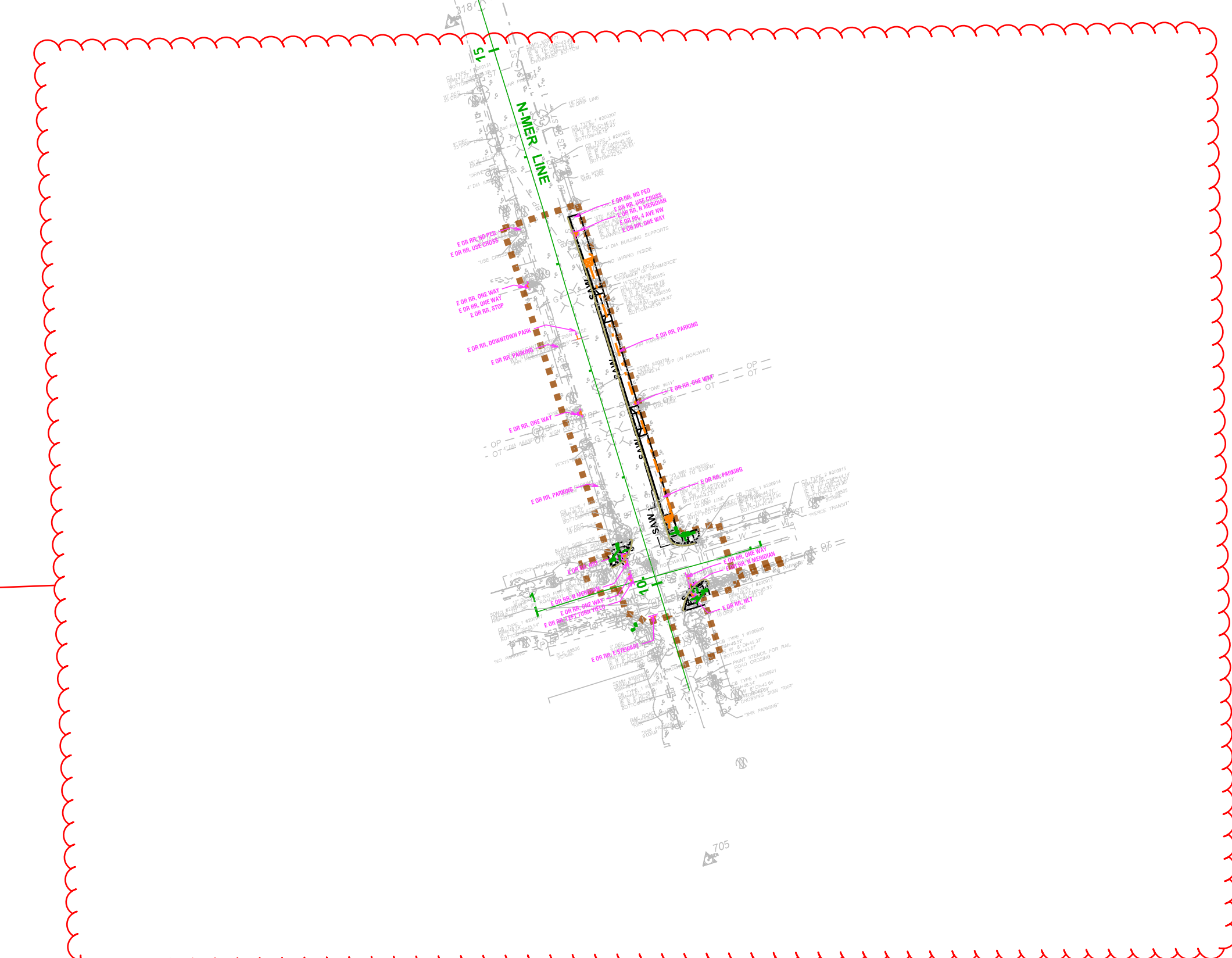


SEE ALL PLOT 1

PRROW20260428



Work Location - see next page for site map



LEGEND

EXISTING BASEMAP	---x---x---x---	(GRAY)
ROADWAY	====	(BLACK)
STRUCTURES	====	(CYAN)
DRAINAGE	—>—	(DARK BLUE)
SIGNING	○—○	(MAGENTA)
ILLUMINATION	- - - -	(ORANGE)
SIGNALS/ITS	- - - -	(GREEN)
PROPOSED UTILITIES	-w-w-	(RED)
IMPACT AREA LINE	(BROWN)
PROJECT IMPACT AREA	====	(PURPLE)
RIGHT-OF-WAY	//////	(PINK)

0 100 200
SCALE IN FEET

**City of Puyallup
Development
Engineering
APPROVED**

See permit
conditions.

YCharitou
04/20/2026
9:46:49 AM



A 10" diameter core drill is allowed for potholing. For pothole windows larger than 10" in diameter or trenching completed in existing roadway, the contractor shall restore the pavement by installing the trench patch and then grinding/overlaying. All roadway restoration and street patches shall comply with City Standard Detail 01.01.20.

The contractor shall locate the public stormwater mains within the vicinity prior to construction. The contractor shall protect the mains in place and restore any damages utilities caused by the drilling.

Approximate bore location - existing asphalt at SW corner of Stewart and Meridian

