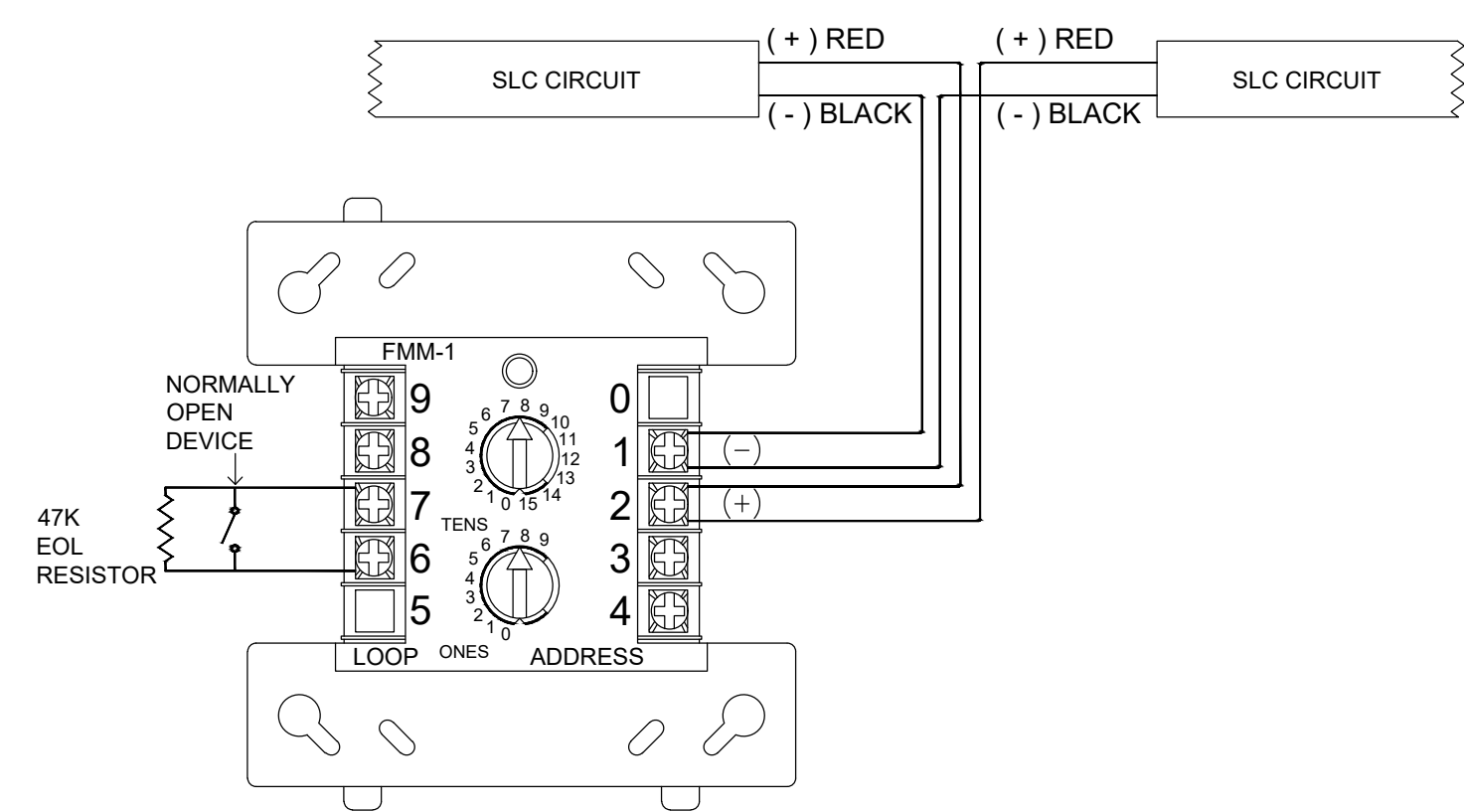
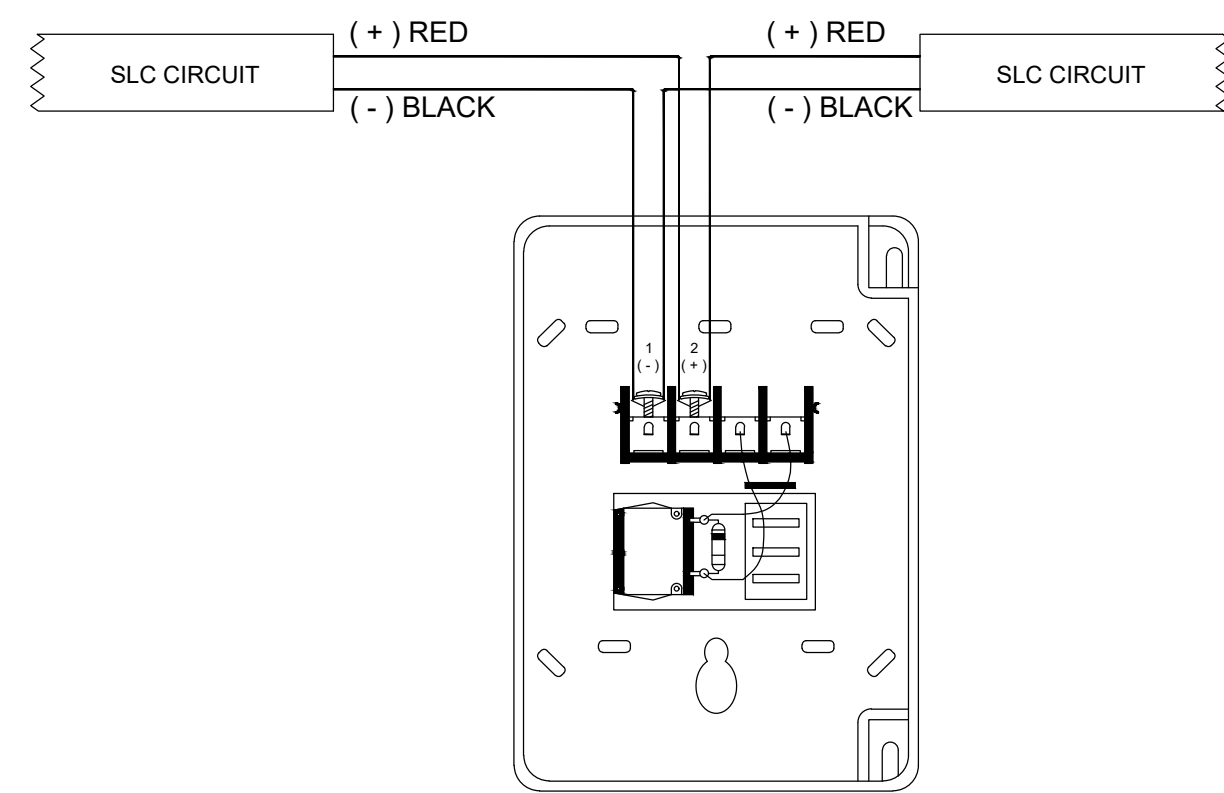


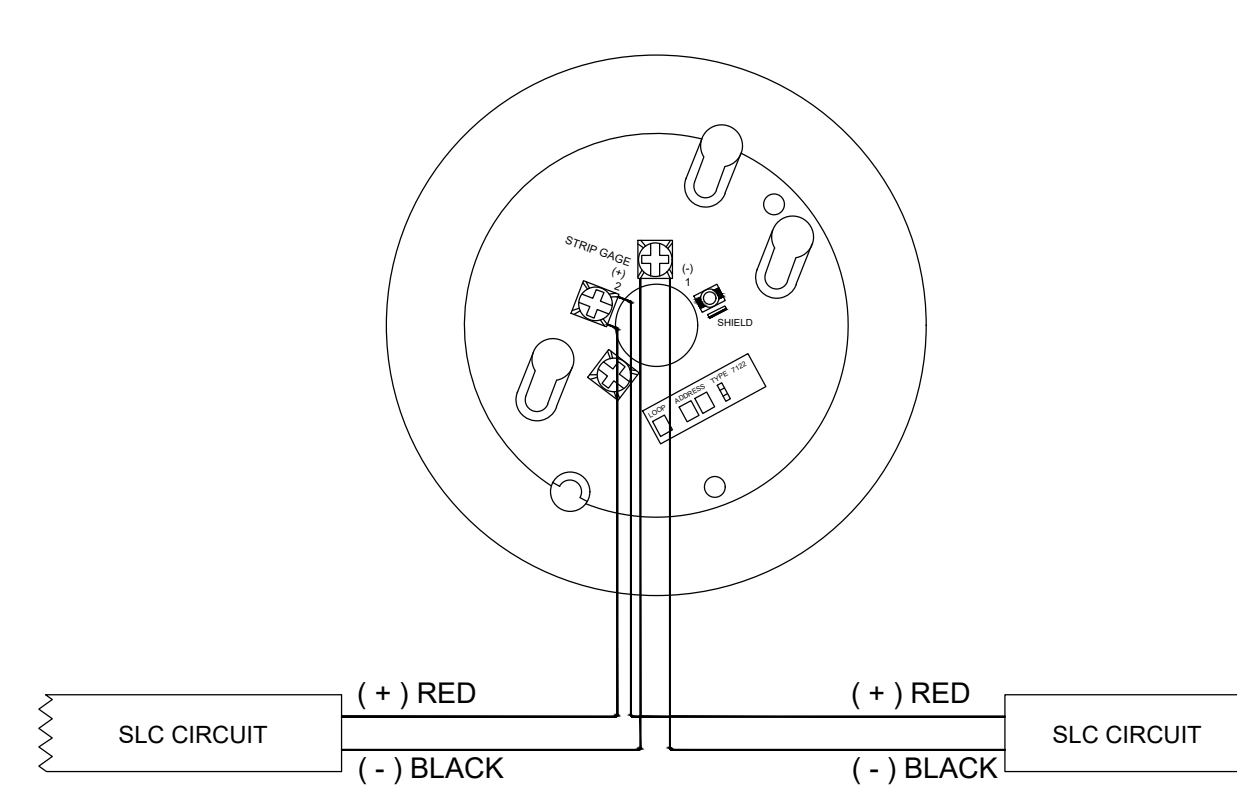
INPUT MODULE



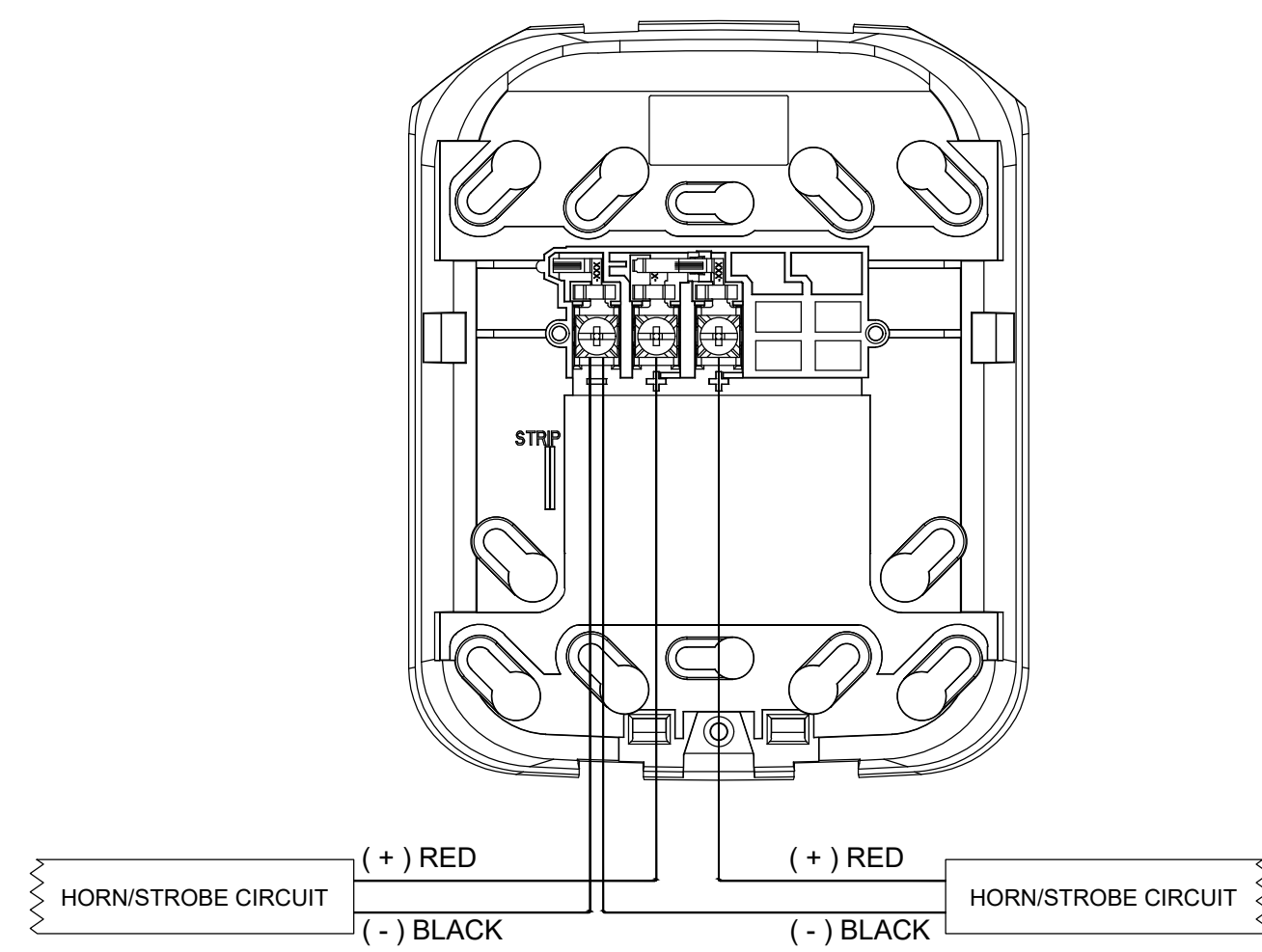
PULL STATION



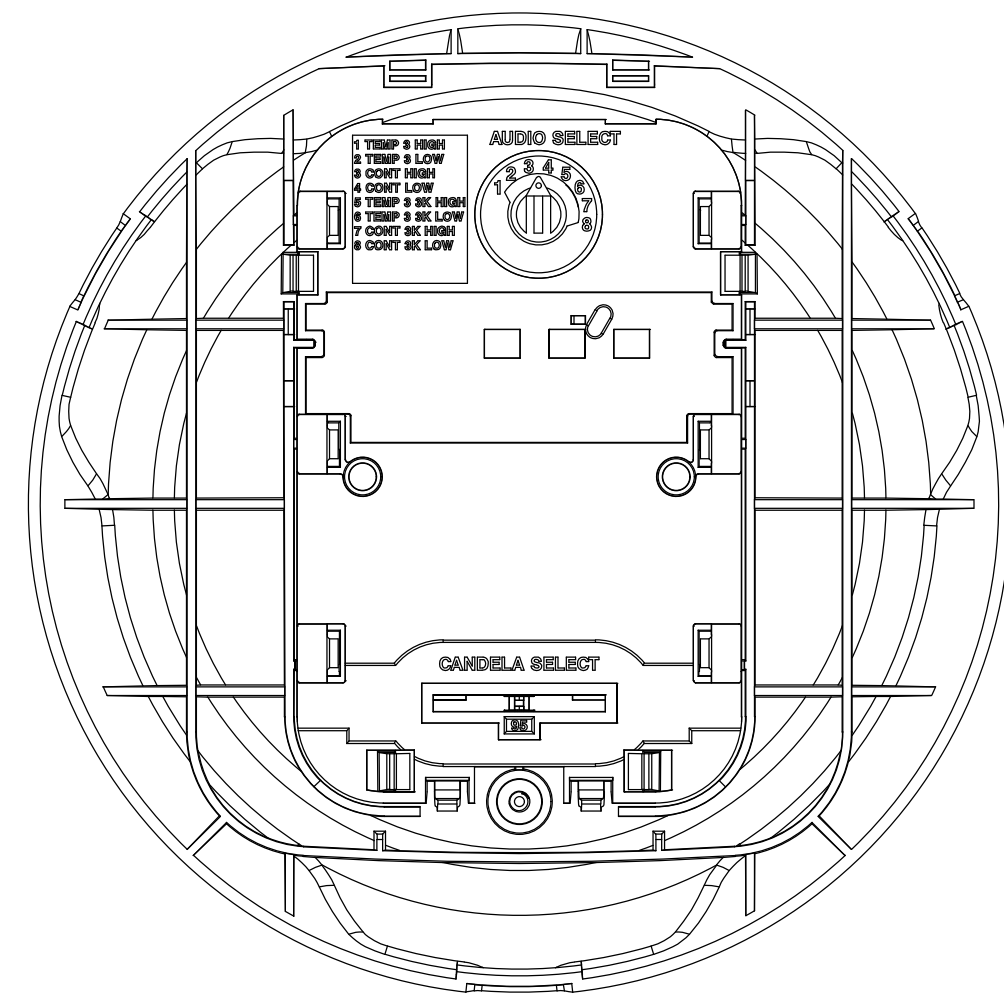
SMOKE DETECTOR



HORN/STROBE



BACKPLATE



DEVICE



BRADLEY HEIGHTS
BLDG H
202 27TH AVE SE, PUYALLUP, WA 98374

REVISIONS:
A (2026-04-01)
INITIAL REVIEW SET

City of Puyallup
Development & Permitting Services
ISSUED PERMIT

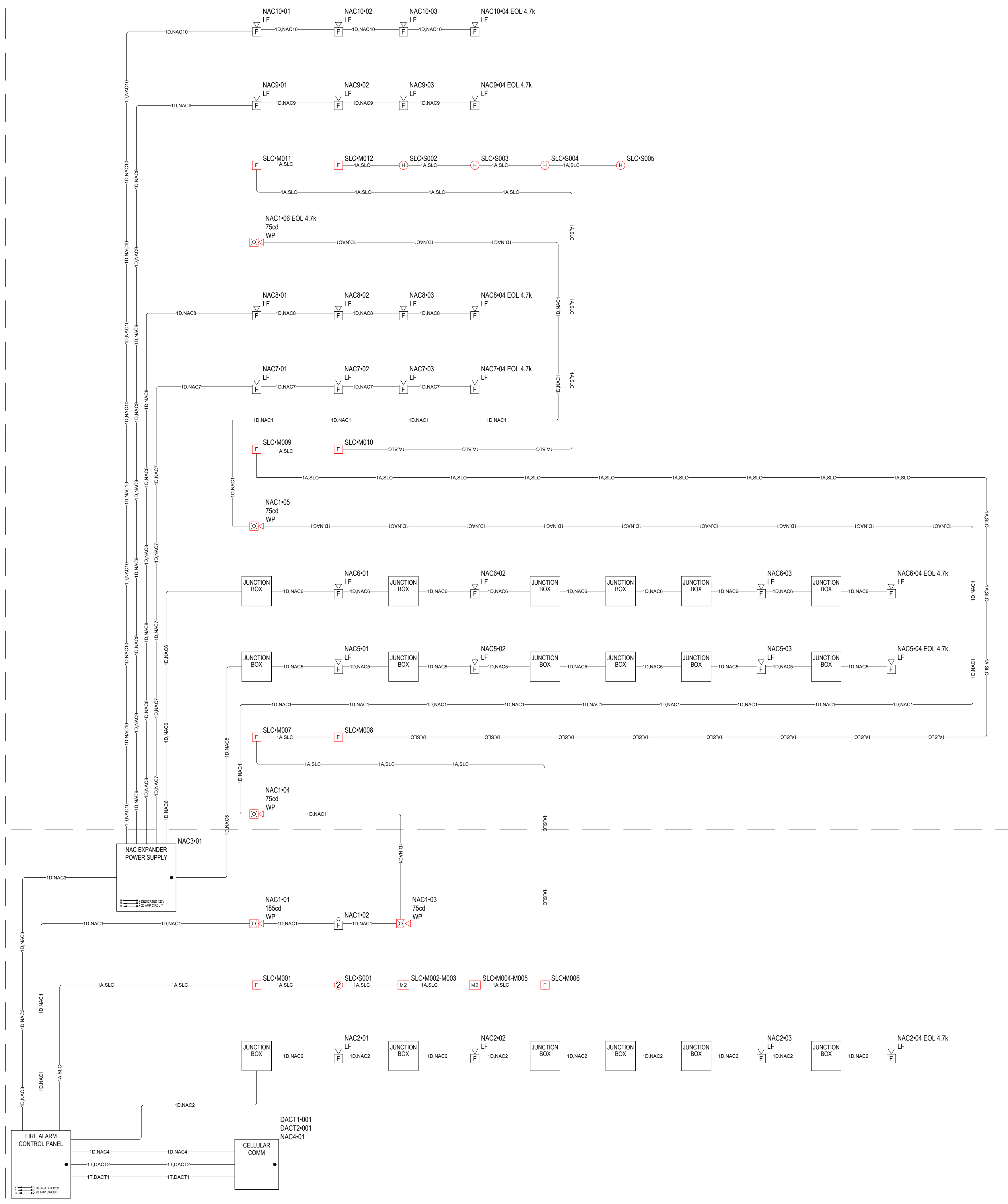
Building	Planning
Engineering	Public Works
Fire	Traffic

SHEET NUMBER: EF0.03
SHEET TITLE: DEVICE DETAILS
PLOT DATE: 04-01-26
DESIGNED BY: D.S.K.
JOB NUMBER: 25-058



**BRADLEY HEIGHTS
 BLDG H**

202 27TH AVE SE, PUYALLUP, WA 98374



SLC POINTS LIST		
INITIATING DEVICES		
POINT #	DEVICE TYPE	DESCRIPTION
97.S001	SMOKE DETECTOR	SPRINKLER RISER ROOM - FACP & PS1
97.S002	HEAT DETECTOR	ATTIC - SOUTHWEST
97.S003	HEAT DETECTOR	ATTIC - SOUTHEAST
97.S004	HEAT DETECTOR	ATTIC - NORTHEAST
97.S005	HEAT DETECTOR	ATTIC - NORTHWEST
MODULES		
POINT #	DEVICE TYPE	DESCRIPTION
97.M001	MANUAL PULL STATION	SPRINKLER RISER ROOM
97.M002	DUAL INPUT MODULE	SPRINKLER RISER ROOM - RISER PROVISION SPARE
97.M003	DUAL INPUT MODULE	SPRINKLER RISER ROOM - RISER PROVISION SPARE
97.M004	DUAL INPUT MODULE	SPRINKLER RISER ROOM - RISER PROVISION SPARE
97.M005	DUAL INPUT MODULE	SPRINKLER RISER ROOM - RISER PROVISION SPARE
97.M006	MANUAL PULL STATION	BASEMENT - STAIR 2 - SOUTH
97.M007	MANUAL PULL STATION	LEVEL 1 - STAIR 2 - SOUTHWEST
97.M008	MANUAL PULL STATION	LEVEL 1 - STAIR 2 - SOUTHWEST
97.M009	MANUAL PULL STATION	LEVEL 2 - STAIR 2 - SOUTHWEST
97.M010	MANUAL PULL STATION	LEVEL 2 - STAIR 2 - SOUTHWEST
97.M011	MANUAL PULL STATION	LEVEL 3 - STAIR 2 - SOUTHWEST
97.M012	MANUAL PULL STATION	LEVEL 3 - STAIR 2 - SOUTHWEST

CABLE AND WIRE LEGEND							
LABEL	PART NO	MANUFACTURER	APPLICATION	RESISTANCE MFT	AWG	DESCRIPTION	TOTAL LENGTH
A.SLC	16/2 FPLPR	GENERIC	SLC	4.89	16	2 COND. SOLID COPPER FPLPR ADDRESSABLE	396'
D.NAC1	12/2 FPLPR	GENERIC	NAC	1.93	12	2 COND. SOLID COPPER FPLPR ANALOG UNSHIELDED	392'
D.NAC2	12/2 FPLPR	GENERIC	NAC	1.93	12	2 COND. SOLID COPPER FPLPR ANALOG UNSHIELDED	160'
D.NAC3	12/2 FPLPR	GENERIC	NAC	1.93	12	2 COND. SOLID COPPER FPLPR ANALOG UNSHIELDED	3'
D.NAC4	12/2 FPLPR	GENERIC	NAC	1.93	12	2 COND. SOLID COPPER FPLPR ANALOG UNSHIELDED	1'
D.NAC5	12/2 FPLPR	GENERIC	NAC	1.93	12	2 COND. SOLID COPPER FPLPR ANALOG UNSHIELDED	270'
D.NAC6	12/2 FPLPR	GENERIC	NAC	1.93	12	2 COND. SOLID COPPER FPLPR ANALOG UNSHIELDED	285'
D.NAC7	12/2 FPLPR	GENERIC	NAC	1.93	12	2 COND. SOLID COPPER FPLPR ANALOG UNSHIELDED	293'
D.NAC8	12/2 FPLPR	GENERIC	NAC	1.93	12	2 COND. SOLID COPPER FPLPR ANALOG UNSHIELDED	331'
D.NAC9	12/2 FPLPR	GENERIC	NAC	1.93	12	2 COND. SOLID COPPER FPLPR ANALOG UNSHIELDED	402'
D.NAC10	12/2 FPLPR	GENERIC	NAC	1.93	12	2 COND. SOLID COPPER FPLPR ANALOG UNSHIELDED	441'
T.DACT1	RJ-11	GENERIC	RJ-11	16.14	22	4 COND. UNSHIELDED COMMUNICATIONS CABLE	1'
T.DACT2	RJ-11	GENERIC	RJ-11	16.14	22	4 COND. UNSHIELDED COMMUNICATIONS CABLE	1'

City of Puyallup
 Development & Permitting Services
ISSUED PERMIT

Building	Planning
Engineering	Public Works
Fire	Traffic

REVISIONS:
 (2026-04-01)
 INITIAL REVIEW SET

SHEET NUMBER: EF1.01

SHEET TITLE:
 ONE-LINE
 RISER DIAGRAM

PLOT DATE: 04-01-26

DESIGNED BY: D.S.K.

JOB NUMBER: 25-058

PANEL LOAD SUMMARY									STANDBY CURRENT (AMPS)		ALARM CURRENT (AMPS)		PANEL FACP (6808) SUMMARY REPORT				
PANEL COMPONENT SUMMARY				QTY	PART NO	DESCRIPTION	CURRENT DRAW (A)	TOTAL (A)	CURRENT DRAW (A)	TOTAL (A)							
				1	6808 Main Board	Main Board	1 x 0.19	= 0.19	1 x 0.25	= 0.25							
				CIRCUIT													
				DACT1							1 x 0	= 0	1 x 0	= 0			
				DACT2							1 x 0	= 0	1 x 0	= 0			
				NAC1							1 x 0	= 0	1 x 0.5915	= 0.5915			
				NAC2							1 x 0	= 0	1 x 0.552	= 0.552			
				NAC3							1 x 0.014	= 0.014	1 x 0.014	= 0.014			
				NAC4							1 x 0.06	= 0.06	1 x 0.2	= 0.2			
				SLC							1 x 0.0053	= 0.0053	1 x 0.0268	= 0.0268			
				TOTAL STANDBY CURRENT							0.2693		TOTAL ALARM CURRENT	1.6343			
CIRCUIT DETAILS AND CALCULATIONS									STANDBY CURRENT		ALARM CURRENT		POINT-TO-POINT VOLTAGE DROP CALCULATION SUMMARY				
SOURCE	CIRCUIT	AWG	SYMBOL	QTY	PART NO	DEVICE SETTING	CIRCUIT LENGTH	CIRCUIT RESISTANCE (Ω/ft)	CURRENT DRAW (A)	TOTAL (A)	CURRENT DRAW (A)	TOTAL (A)	STARTING CALCULATION VOLTAGE	END OF LINE VOLTAGE	VOLTAGE DROP		
6808 Main Board	NAC1	12		4	P2GRKLED	75cd	392'	0.00193	4 x 0	= 0	4 x 0.087	= 0.348	20.4v	20.01v	0.39v		
				1	P2GRKLED	185cd			1 x 0	= 0	1 x 0.19	= 0.19					
				1	SSM24-10				1 x 0	= 0	1 x 0.0535	= 0.0535					
	NAC2	12		4	HW-LF		160'	0.00193	4 x 0	= 0	4 x 0.138	= 0.552	20.4v	20.2v	0.2v		
	NAC3	12		1	HPF-PS10		3'	0.00193	1 x 0.014	= 0.014	1 x 0.014	= 0.014	20.4v	20.4v	0v		
	NAC4	12		1	HW-AV-LTE-M		0'	0.00193	1 x 0.06	= 0.06	1 x 0.2	= 0.2	20.4v	20.4v	0v		
	SLC	16		2	SK-MONITOR-2		396'	0.00489	2 x 0.00075	= 0.0015	2 x 0.00075	= 0.0015					
				8	SK-PULL-DA				8 x 0.00035	= 0.0028	8 x 0.00035	= 0.0028					
				4	SS-HEAT w/B300-6				4 x 0.0002	= 0.0008	4 x 0.0045	= 0.018					
				1	SS-PHOTO w/B300-6				1 x 0.0002	= 0.0002	1 x 0.0045	= 0.0045					
SECONDARY POWER SOURCE REQUIREMENTS													PROVIDE (2) 12V 12AH BATTERIES @ 24VDC				
									REQUIRED STANDBY TIME = 24 HOURS		REQUIRED ALARM TIME = 5 MINUTES						
									SECONDARY STANDBY LOAD	0.2693	x 24	= 6.46 AH					
									SECONDARY ALARM LOAD	1.6343	x 0.08	= 0.14 AH					
									STANDBY AND ALARM LOAD SUBTOTAL			6.6 AH					
									DERATING FACTOR			x 1.25					
									SECONDARY LOAD REQUIREMENTS (AMP HOURS)			8.25 AH					

PANEL LOAD SUMMARY									STANDBY CURRENT (AMPS)		ALARM CURRENT (AMPS)		PANEL PS1 (HPF-PS10) SUMMARY REPORT PANEL POWER SUPPLY MAX CURRENT = 10A TOTAL USED CAPACITY = 3.497A (34.97 %)				
PANEL COMPONENT SUMMARY				QTY	PART NO	DESCRIPTION	CURRENT DRAW (A)	TOTAL (A)	CURRENT DRAW (A)	TOTAL (A)							
				1	HPF-PS10 MAIN BOARD	Fire Alarm Power Supply Main Board	1 x 0.156	= 0.156	1 x 0.185	= 0.185							
				CIRCUIT													
				NAC10							1 x 0	= 0	1 x 0.552	= 0.552			
				NAC5							1 x 0	= 0	1 x 0.552	= 0.552			
				NAC6							1 x 0	= 0	1 x 0.552	= 0.552			
				NAC7							1 x 0	= 0	1 x 0.552	= 0.552			
				NAC8							1 x 0	= 0	1 x 0.552	= 0.552			
				NAC9							1 x 0	= 0	1 x 0.552	= 0.552			
				TOTAL STANDBY CURRENT							0.156		TOTAL ALARM CURRENT	3.497			
CIRCUIT DETAILS AND CALCULATIONS									STANDBY CURRENT		ALARM CURRENT		POINT-TO-POINT VOLTAGE DROP CALCULATION SUMMARY				
SOURCE	CIRCUIT	AWG	SYMBOL	QTY	PART NO	DEVICE SETTING	CIRCUIT LENGTH	CIRCUIT RESISTANCE (Ω/ft)	CURRENT DRAW (A)	TOTAL (A)	CURRENT DRAW (A)	TOTAL (A)	STARTING CALCULATION VOLTAGE	END OF LINE VOLTAGE	VOLTAGE DROP		
HPF-PS10 MAIN BOARD	NAC10	12		4	HW-LF		441'	0.00193	4 x 0	= 0	4 x 0.138	= 0.552	20.4v	19.54v	0.86v		
	NAC5	12		4	HW-LF		270'	0.00193	4 x 0	= 0	4 x 0.138	= 0.552	20.4v	19.97v	0.43v		
	NAC6	12		4	HW-LF		285'	0.00193	4 x 0	= 0	4 x 0.138	= 0.552	20.4v	19.94v	0.46v		
	NAC7	12		4	HW-LF		293'	0.00193	4 x 0	= 0	4 x 0.138	= 0.552	20.4v	19.86v	0.54v		
	NAC8	12		4	HW-LF		331'	0.00193	4 x 0	= 0	4 x 0.138	= 0.552	20.4v	19.78v	0.62v		
	NAC9	12		4	HW-LF		402'	0.00193	4 x 0	= 0	4 x 0.138	= 0.552	20.4v	19.62v	0.78v		
SECONDARY POWER SOURCE REQUIREMENTS													PROVIDE (2) 12V 7AH BATTERIES @ 24VDC				
									REQUIRED STANDBY TIME = 24 HOURS		REQUIRED ALARM TIME = 5 MINUTES						
									SECONDARY STANDBY LOAD	0.156	x 24	= 3.74 AH					
									SECONDARY ALARM LOAD	3.497	x 0.08	= 0.29 AH					
									STANDBY AND ALARM LOAD SUBTOTAL			4.04 AH					
									DERATING FACTOR			x 1.25					
									SECONDARY LOAD REQUIREMENTS (AMP HOURS)			5.04 AH					

City of Puyallup
Development & Permitting Services
ISSUED PERMIT

Building	Planning
Engineering	Public Works
Fire	Traffic



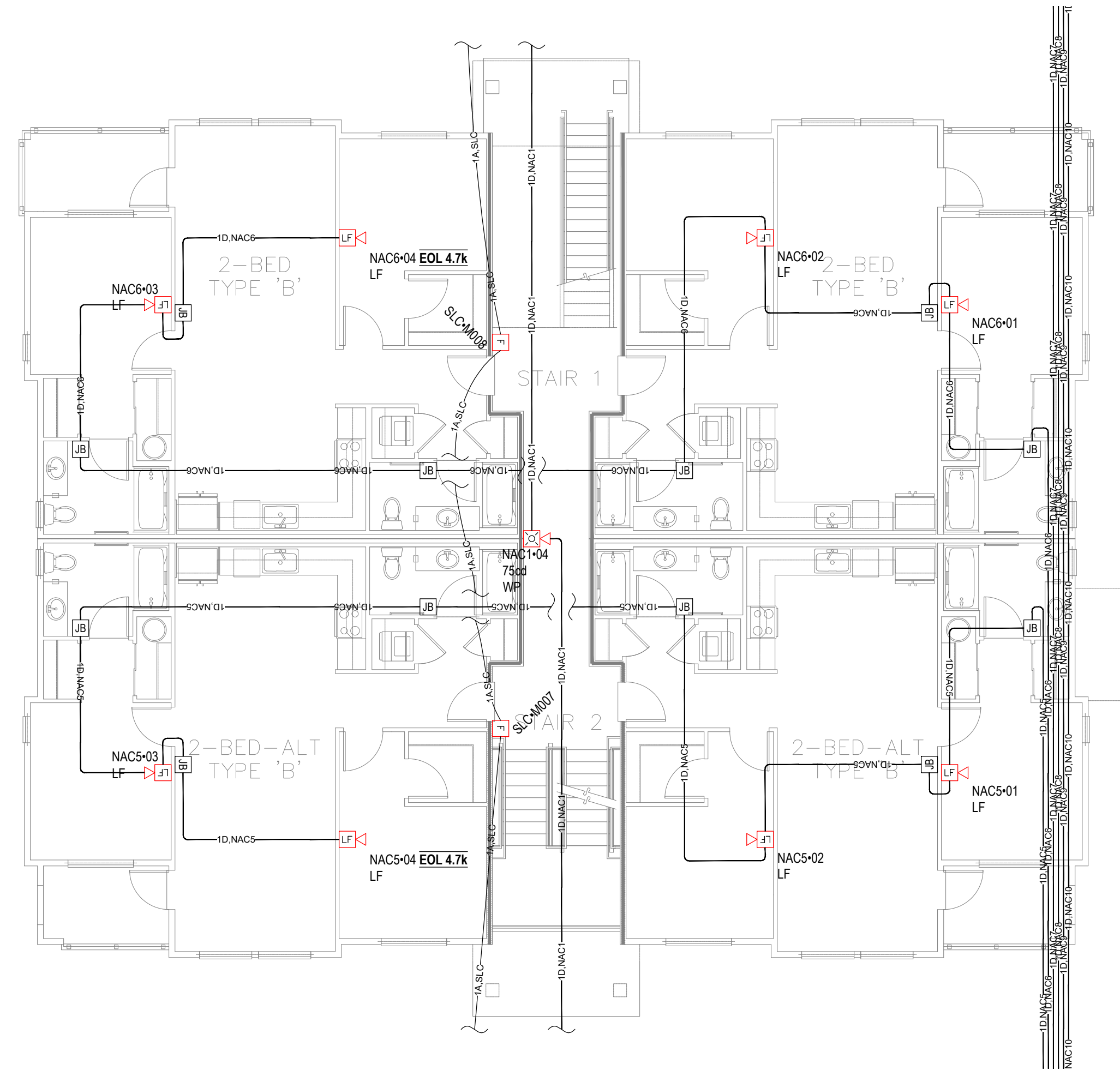
BRADLEY HEIGHTS
BLDG H
202 27TH AVE SE, PUYALLUP, WA 98374

REVISIONS:
A (2026-04-01)
INITIAL REVIEW SET

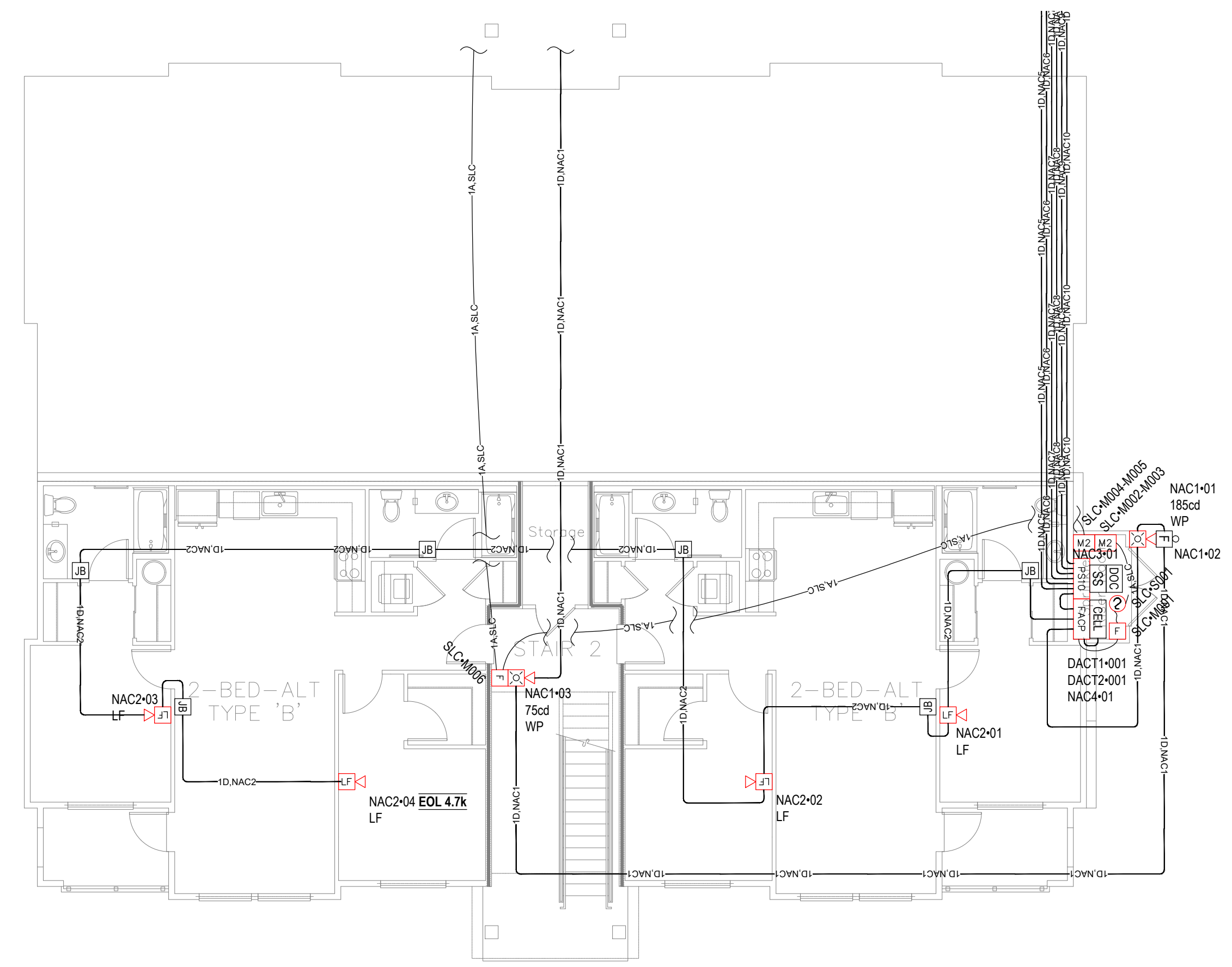
SHEET NUMBER: EF2.01

SHEET TITLE: FIRE ALARM
PANEL
CALCULATIONS

PLOT DATE: 04-01-26
DESIGNED BY: D.S.K.
JOB NUMBER: 25-058



1 LEVEL 1 FIRE ALARM PLAN
SCALE: 1/8" = 1'-0"



1 BASEMENT FIRE ALARM PLAN
SCALE: 1/8" = 1'-0"

City of Puyallup
Development & Permitting Services
ISSUED PERMIT

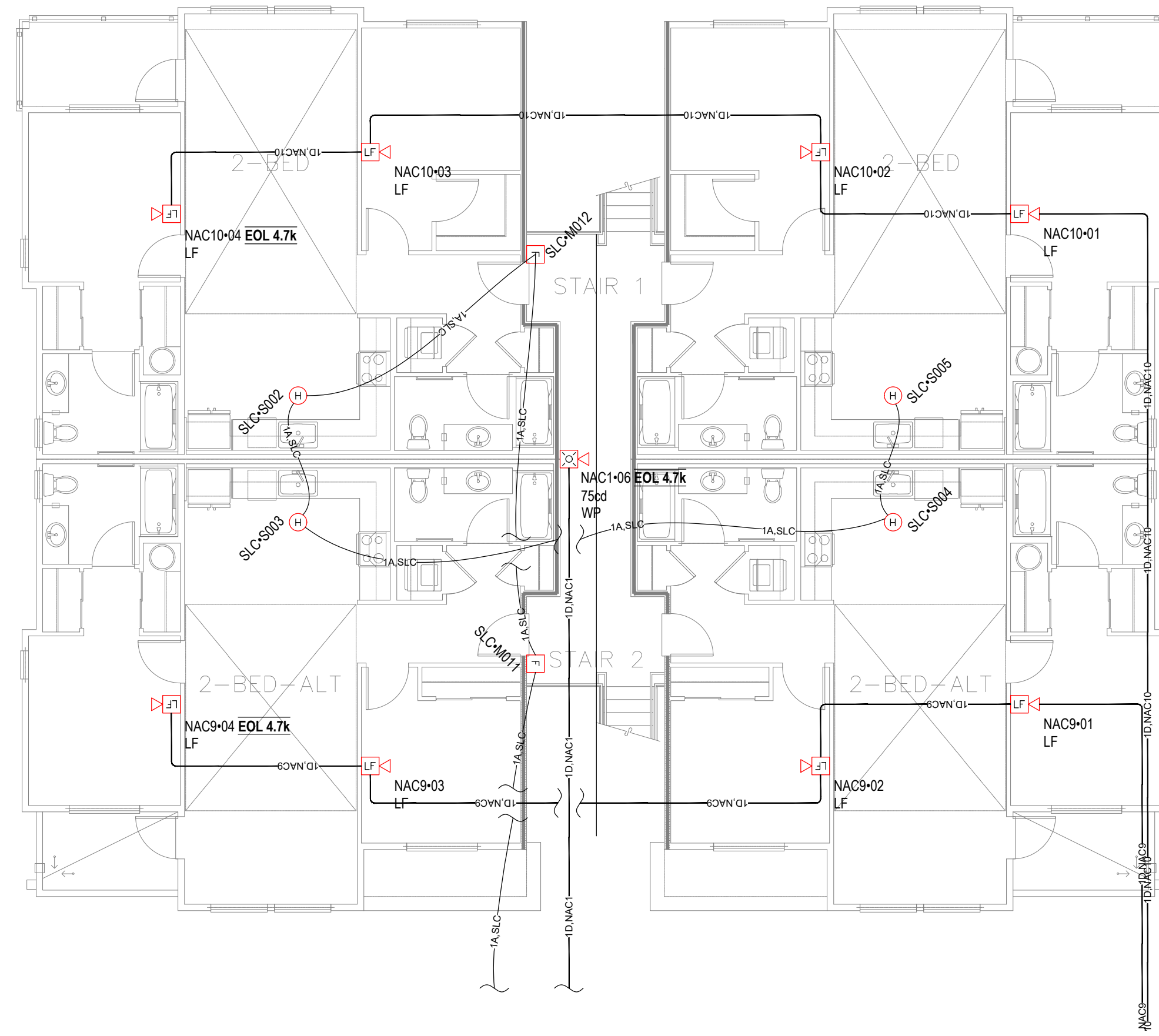
Building	Planning
Engineering	Public Works
Fire	Traffic



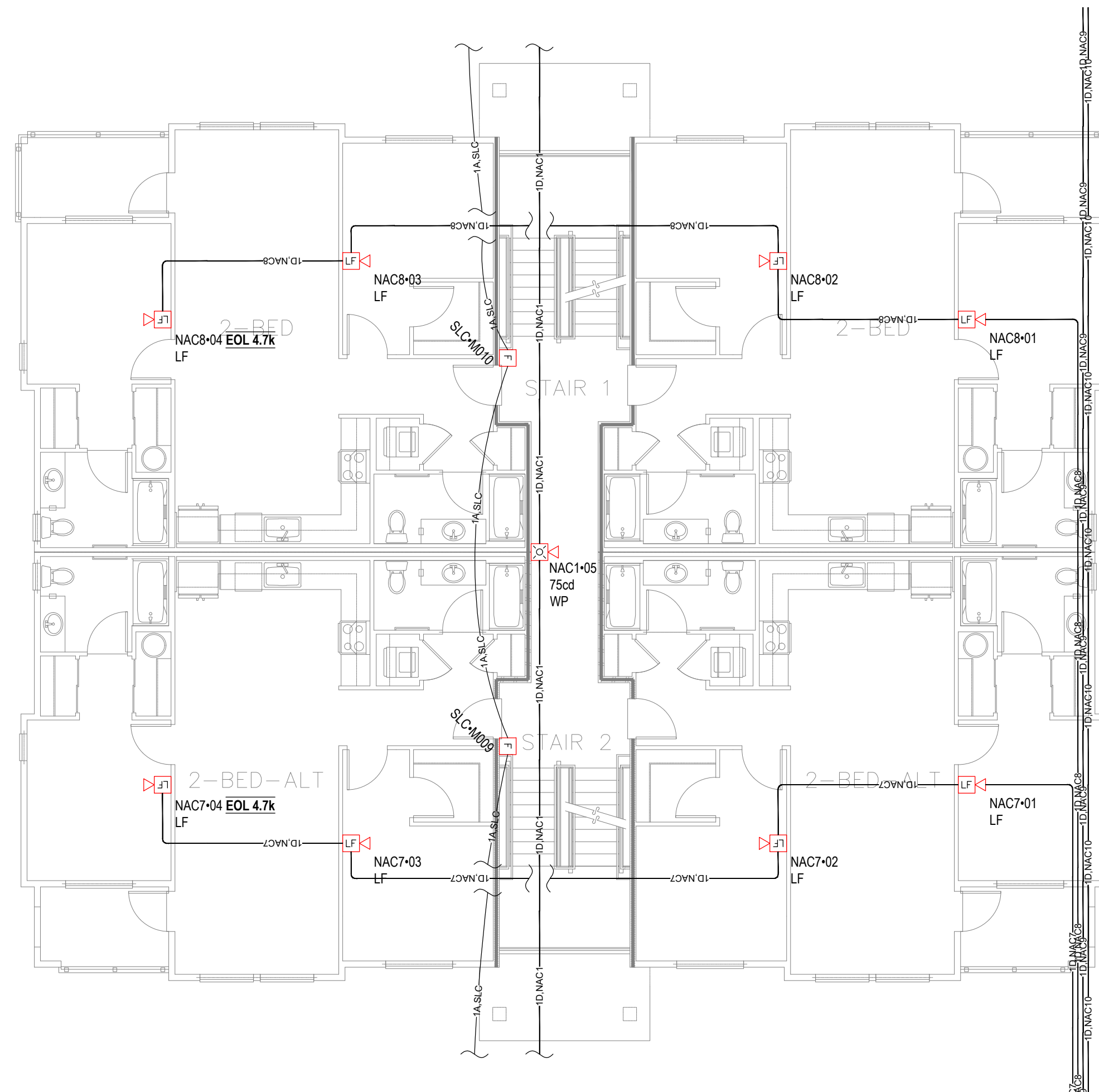
BRADLEY HEIGHTS
BLDG H
202 27TH AVE SE, PUYALLUP, WA 98374

REVISIONS:
A (2026-04-01)
INITIAL REVIEW SET

SHEET NUMBER: EF3.01
SHEET TITLE: BASEMENT & LEVEL 1 FIRE ALARM PLAN
PLOT DATE: 04-01-26
DESIGNED BY: D.S.K.
JOB NUMBER: 25-058



1 LEVEL 3 FIRE ALARM PLAN
SCALE: 1/8" = 1'-0"



1 LEVEL 2 FIRE ALARM PLAN
SCALE: 1/8" = 1'-0"

City of Puyallup
Development & Permitting Services
ISSUED PERMIT

Building	Planning
Engineering	Public Works
Fire	Traffic



BRADLEY HEIGHTS
BLDG H

202 27TH AVE SE, PUYALLUP, WA 98374

REVISIONS:
 (2026-04-01)
 INITIAL REVIEW SET

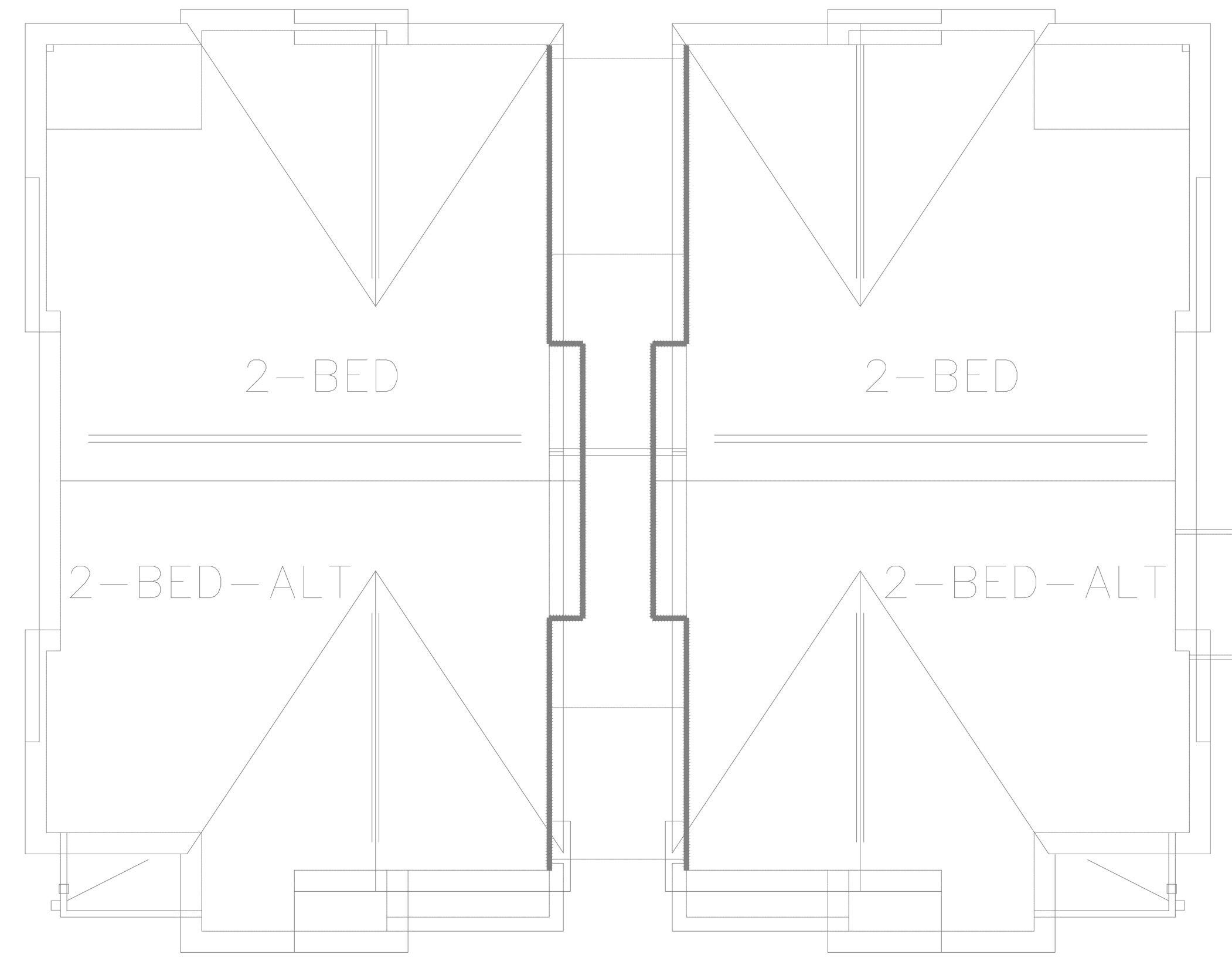
SHEET NUMBER: EF3.02

SHEET TITLE:
LEVEL 2 & 3
FIRE ALARM
PLAN

PLOT DATE: 04-01-26

DESIGNED BY: D.S.K.

JOB NUMBER: 25-058





ROOF FIRE ALARM PLAN
 SCALE: 1/8" = 1'-0"

City of Puyallup
 Development & Permitting Services
ISSUED PERMIT

Building	Planning
Engineering	Public Works
Fire	Traffic

KIRBY
 4826 75th St. NW • Suite 101 • Auburn, WA 98001
 P: (253) 859-2000 • F: (253) 859-2363
 www.kirbyelectric.com



BRADLEY HEIGHTS
BLDG H
 202 27TH AVE SE, PUYALLUP, WA 98374

REVISIONS:
 (2026-04-01)
 INITIAL REVIEW SET

SHEET NUMBER: EF3.03

SHEET TITLE:
ROOF FIRE ALARM PLAN

PLOT DATE: 04-01-26

DESIGNED BY: D.S.K.

JOB NUMBER: 25-058