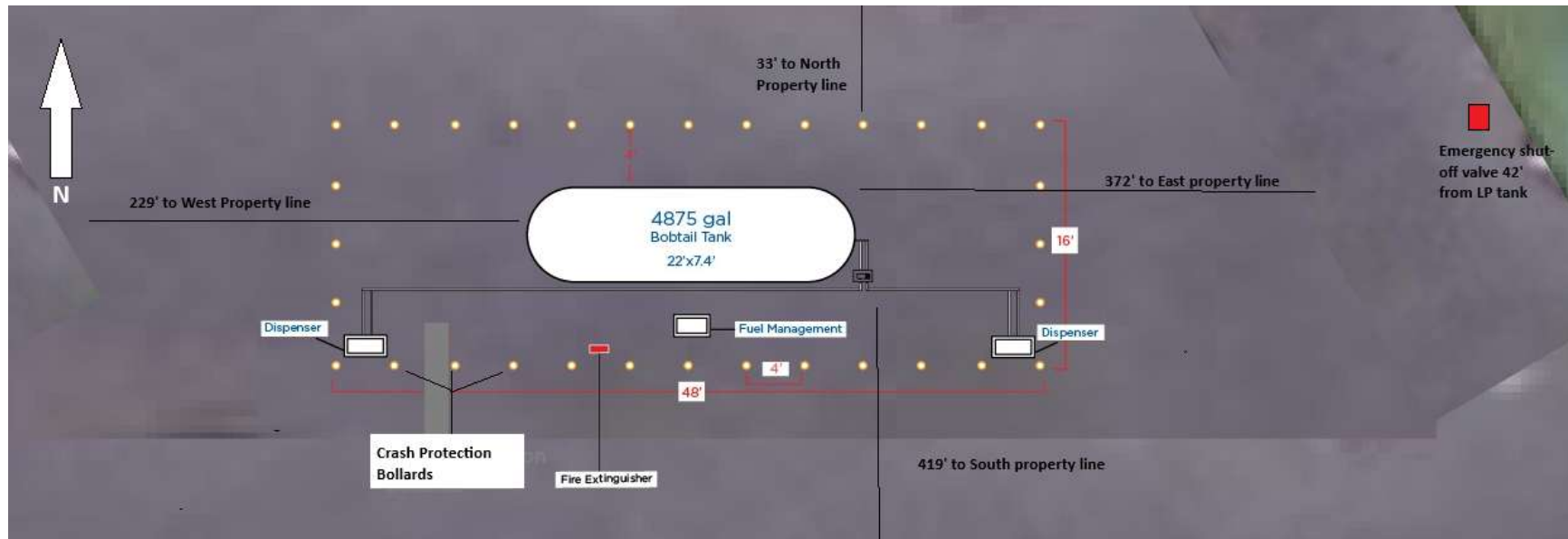


Puyallup Schools Transportation Services - 1501 39<sup>th</sup> Ave SW, Puyallup WA 98371

- Crash protection bollards will be 6" concrete filled steel., 72" long, with 36" below grade. Spacing will be 4' center point to center point. All bollards will be in excess of 3' from the skin of the tank.
- Fire Extinguisher is 20# dry chemical type with an A:B:C rating,

Please find Attached

- Application
- Site Plan
- Engineered Anchor Detail
- Corken Coroflow DL18 model pump specification sheet