

EXTERIOR ELEVATION COLOR AND MATERIAL LEGEND

A1	EXTERIOR MATERIAL TAG	MATERIAL DESIGNATIONS
—	COLOR DESIGNATION	A FIBER CEMENT PANEL SIDING
—	MATERIAL DESIGNATION	B FIBER CEMENT LAP SIDING
		C COMPOSITE "WOOD" SIDING
		D CORRUGATED METAL SIDING

1	EXTERIOR PAINT COLOR 1 - SHERWIN WILLIAMS 6258 "TRICORN BLACK"
2	EXTERIOR PAINT COLOR 2 - SHERWIN WILLIAMS 7662 "EVENING SHADOW"
3	RESYSTA SIDING "DARK BURMA"
4	TAYLOR CORRUGATED METAL "KYNAR 500 MATTE BLACK"

EXTERIOR FINISH SCHEDULE

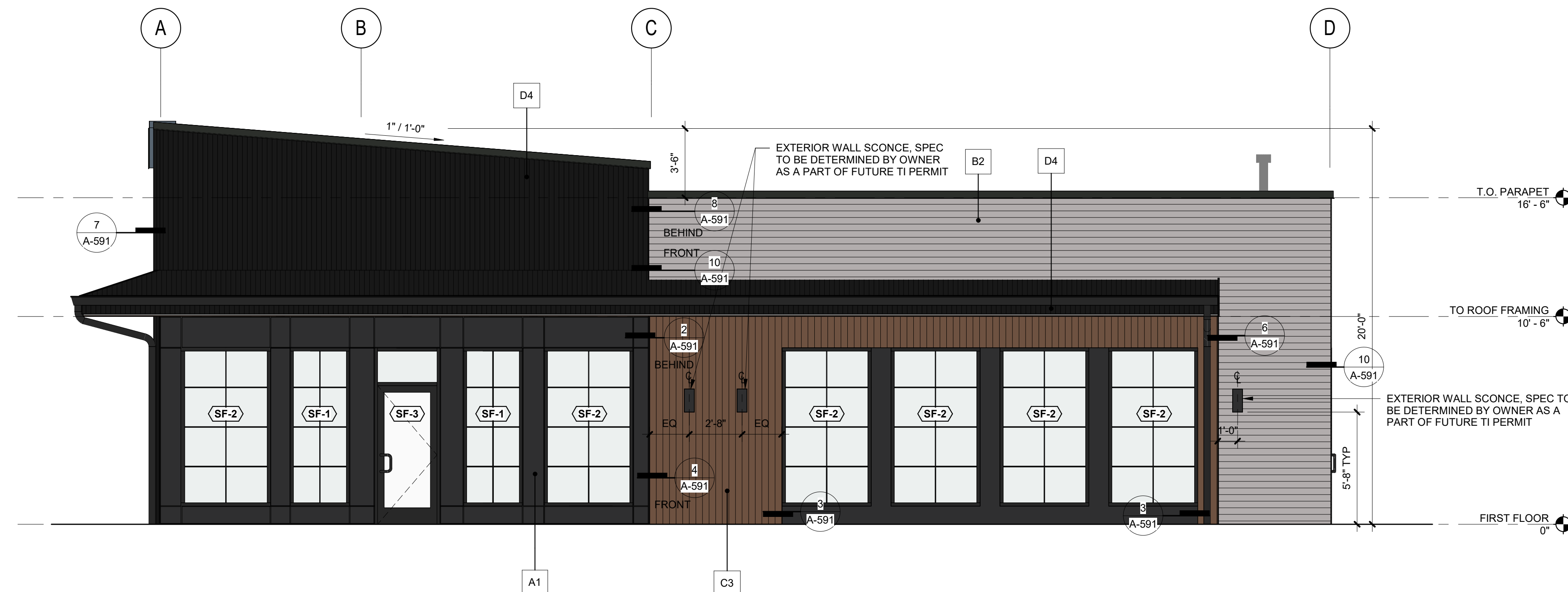
ITEM	MATERIAL	FINISH	COLOR
STOREFRONT FRAMING & DOORS	ALUMINUM	ANODIZED	BLACK
FIBER CEMENT PANEL SIDING	FIBER CEMENT	FIELD PAINT	COLOR: EPT-1
FIBER CEMENT LAP SIDING, 4" EXPOSURE	FIBER CEMENT	FIELD PAINT	COLOR: EPT-2
RESYSTA "WOOD" SIDING	COMPOSITE	FACTORY FINISH	DARK BURMA
PRE-PRIMED SHEET METAL TRIM	SHEET METAL	FIELD PAINT	COLOR: MATCH ADJACENT
PARAPET FLASHING	SHEET METAL	FACTORY FINISH	AEP SPAN COOL BLACK
TAYLOR 7/8" CORRUGATED METAL PANEL SIDING	SHEET METAL	FACTORY KYNAR FINISH	WEATHERED ZINC
TAYLOR 7/8" CORRUGATED METAL ROOFING	SHEET METAL	FACTORY KYNAR FINISH	WEATHERED ZINC
STOREFRONT FLASHING	SHEET METAL	FACTORY FINISH	AEP SPAN COOL BLACK
RESYSTA "WOOD" SOFFIT & FASCIA	COMPOSITE	FACTORY FINISH	DARK BURMA
DOWNSPOUTS	TO BE DETERMINED	FACTORY FINISH	MATCH AEP SPAN COOL BLACK

EXTERIOR ELEVATION GENERAL NOTES

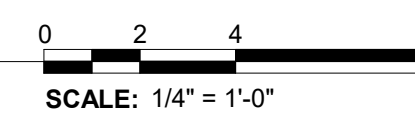
- REFER TO A-591 FOR TYPICAL SIDING REVEAL AND TRANSITION DETAILS.
- REFER TO A-591 FOR TYPICAL TRIMS, FLASHINGS, AND AIR BARRIER TRANSITIONS AT PENETRATIONS OF EXTERIOR WALLS.
- REFER ALSO TO TI SCOPE OF WORK FOR LOCATIONS OF WORK/DEVICES REQUIRING PENETRATIONS NOT SHOWN ON EXTERIOR ELEVATIONS. PROVIDE BACKING, TRIMS, FLASHINGS, AND AIR BARRIER TRANSITIONS AT PENETRATIONS AND SURFACE-MOUNTED ITEMS ON EXTERIOR WALLS.
- REFER TO WINDOW AND STOREFRONT TYPES FOR STANDARD SHADING CONDITIONS.



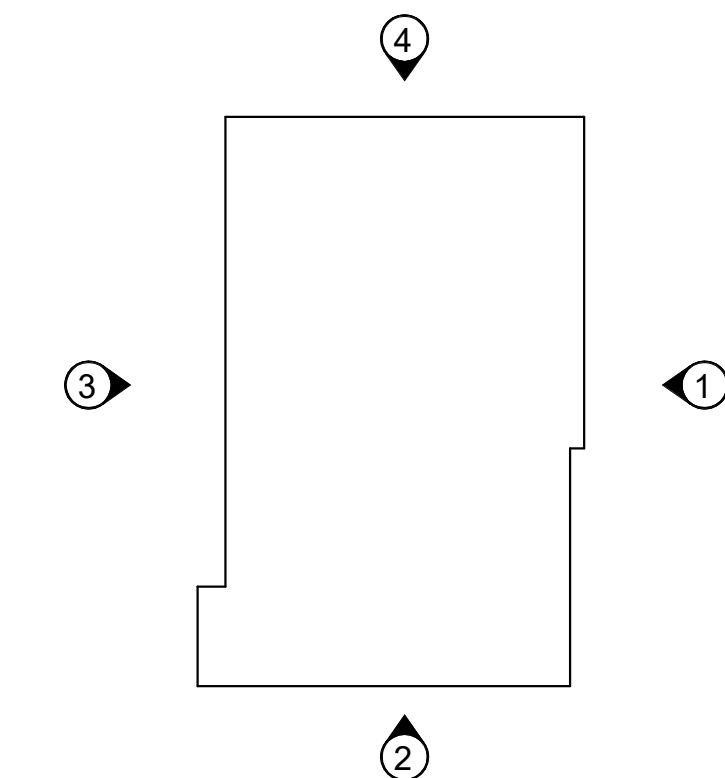
2 EXTERIOR ELEVATION - SOUTH COLOR
1/4" = 1'-0"



1 EXTERIOR ELEVATION - EAST COLOR
1/4" = 1'-0"



KEY PLAN



PROJECT:
BUILDING SHELL RENOVATION
PEM WOODS COFFEE
1127 E. MAIN AVENUE
PUYALLUP, WA 98372

REVISIONS

DATE:
3.30.2026
BCRA NO:
25137.00.00
DRAWN BY:
REVIEWED BY:
SHEET TITLE:
EXTERIOR ELEVATIONS

IF SHEET MEASURES LESS THAN 24"X36", IT IS A REDUCED PRINT. REDUCE SCALE ACCORDINGLY

EXTERIOR ELEVATION COLOR AND MATERIAL LEGEND

A1	EXTERIOR MATERIAL TAG	MATERIAL DESIGNATIONS
—	COLOR DESIGNATION	A FIBER CEMENT PANEL SIDING
—	MATERIAL DESIGNATION	B FIBER CEMENT LAP SIDING
		C COMPOSITE "WOOD" SIDING
		D CORRUGATED METAL SIDING

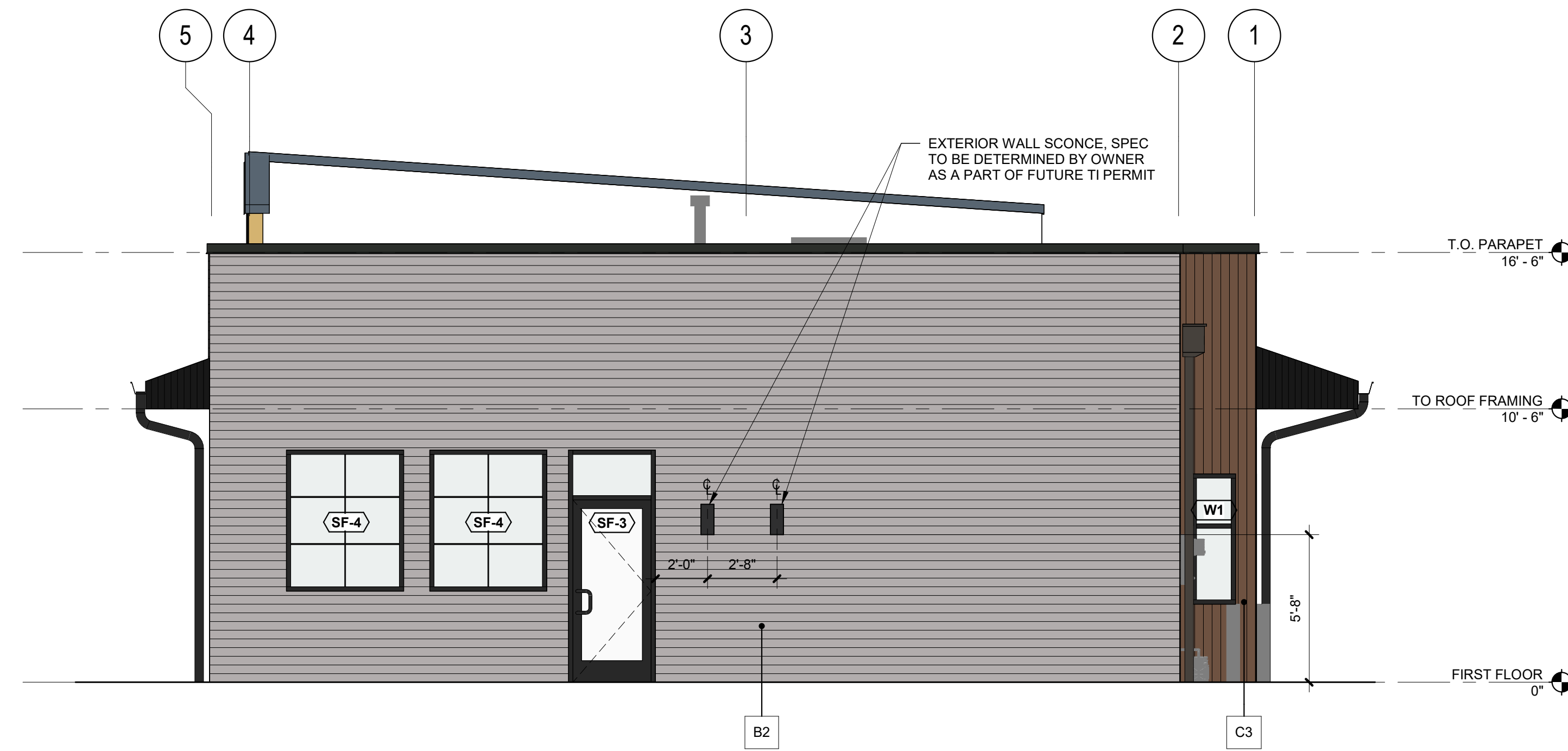
COLOR DESIGNATIONS	
1	EXTERIOR PAINT COLOR 1 - SHERWIN WILLIAMS 6258 "TRICORN BLACK"
2	EXTERIOR PAINT COLOR 2 - SHERWIN WILLIAMS 7662 "EVENING SHADOW"
3	RESYSTA SIDING "DARK BURMA"
4	TAYLOR CORRUGATED METAL "KYNAR 500 MATTE BLACK"

EXTERIOR FINISH SCHEDULE

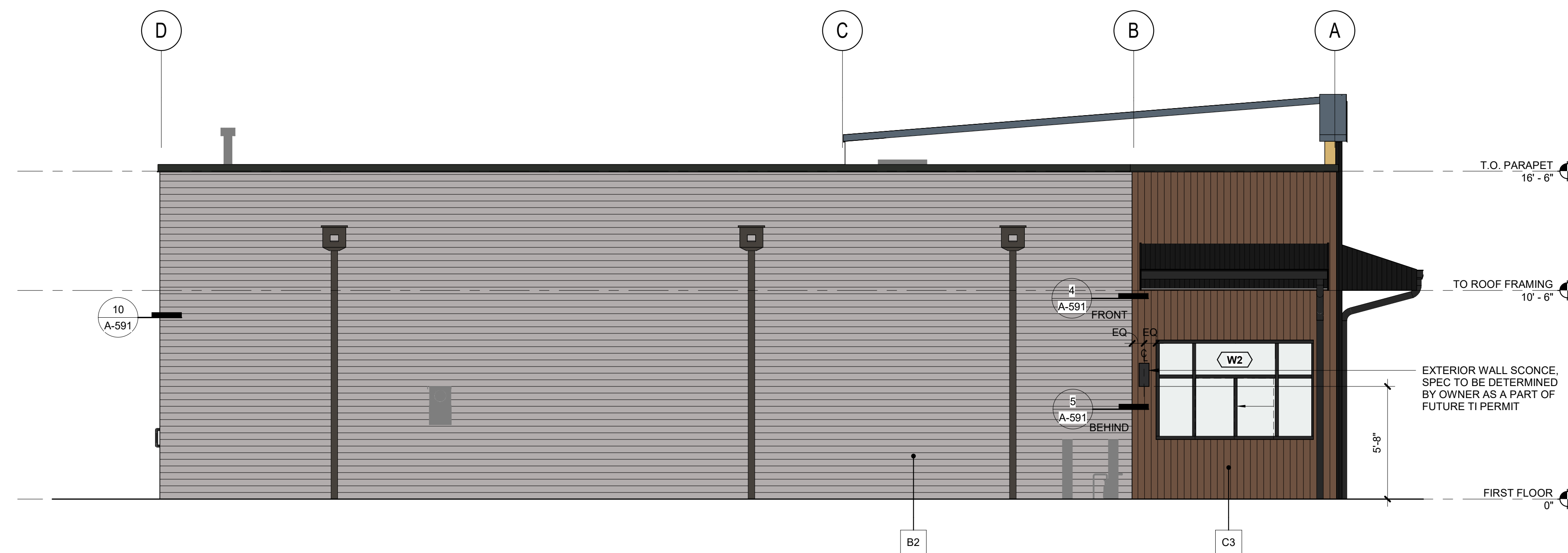
ITEM	MATERIAL	FINISH	COLOR
STOREFRONT FRAMING & DOORS	ALUMINUM	ANODIZED	BLACK
FIBER CEMENT PANEL SIDING	FIBER CEMENT	FIELD PAINT	COLOR: EPT-1
FIBER CEMENT LAP SIDING, 4" EXPOSURE	FIBER CEMENT	FIELD PAINT	COLOR: EPT-2
RESYSTA "WOOD" SIDING	COMPOSITE	FACTORY FINISH	DARK BURMA
PRE-PRIMED SHEET METAL TRIM	SHEET METAL	FIELD PAINT	COLOR: MATCH ADJACENT
PARAPET FLASHING	SHEET METAL	FACTORY FINISH	AEP SPAN COOL BLACK
TAYLOR 7/8" CORRUGATED METAL PANEL SIDING	SHEET METAL	FACTORY KYNAR FINISH	WEATHERED ZINC
TAYLOR 7/8" CORRUGATED METAL ROOFING	SHEET METAL	FACTORY KYNAR FINISH	WEATHERED ZINC
STOREFRONT FLASHING	SHEET METAL	FACTORY FINISH	AEP SPAN COOL BLACK
RESYSTA "WOOD" SOFFIT & FASCIA	COMPOSITE	FACTORY FINISH	DARK BURMA
DOWNSPOUTS	TO BE DETERMINED	FACTORY FINISH	MATCH AEP SPAN COOL BLACK

EXTERIOR ELEVATION GENERAL NOTES

- REFER TO A-591 FOR TYPICAL SIDING REVEAL AND TRANSITION DETAILS.
- REFER TO A-591 FOR TYPICAL TRIMS, FLASHINGS, AND AIR BARRIER TRANSITIONS AT PENETRATIONS OF EXTERIOR WALLS.
- REFER ALSO TO TI SCOPE OF WORK FOR LOCATIONS OF WORK/DEVICES REQUIRING PENETRATIONS NOT SHOWN ON EXTERIOR ELEVATIONS. PROVIDE BACKING, TRIMS, FLASHINGS, AND AIR BARRIER TRANSITIONS AT PENETRATIONS AND SURFACE-MOUNTED ITEMS ON EXTERIOR WALLS.
- REFER TO WINDOW AND STOREFRONT TYPES FOR STANDARD SHADING CONDITIONS.

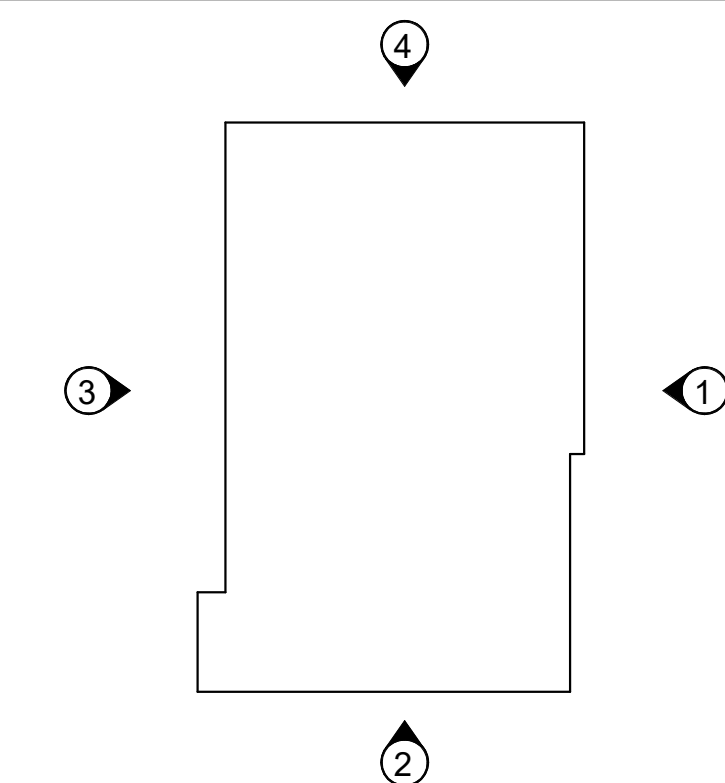


4 EXTERIOR ELEVATION - NORTH COLOR
1/4" = 1'-0"



3 EXTERIOR ELEVATION - WEST COLOR
1/4" = 1'-0"

KEY PLAN



PROJECT:
BUILDING SHELL RENOVATION
PEM WOODS COFFEE
1127 E. MAIN AVENUE
PUYALLUP, WA 98372

REVISIONS

DATE:
3.30.2026
BCRA NO:
25137.00.00
DRAWN BY:
REVIEWED BY:
SHEET TITLE:
EXTERIOR ELEVATIONS