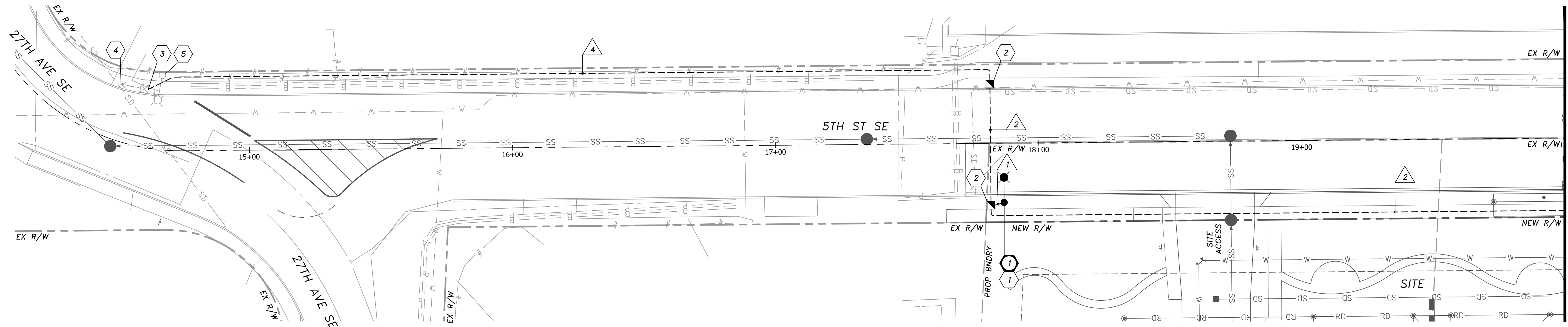


SECTION 03, TOWNSHIP 19 NORTH, RANGE 4 E., W.M.



MATCH LINE 5TH ST STA 20+00
SEE SHEET IL-02

CITY OF PUYALLUP ILLUMINATION GENERAL NOTES

- ALL WORK SHALL BE IN ACCORDANCE WITH CITY OF PUYALLUP PUBLIC WORKS STANDARDS AND WSDOT STANDARDS AND SPECIFICATIONS.
- THE LOCATIONS OF FEATURES SHOWN ARE APPROXIMATE AND SHALL BE VERIFIED BY THE CONTRACTOR PRIOR TO CONSTRUCTION START.
- UTILITY LOCATIONS ARE APPROXIMATE AND SHALL BE VERIFIED IN THE FIELD BY THE CONTRACTOR PRIOR TO ANY ILLUMINATION WORK.
- ALL WORK SHALL BE CONSISTENT WITH UTILITY AGENCY REQUIREMENTS. THE CONTRACTOR SHALL COORDINATE WITH AFFECTED UTILITY AGENCIES THROUGHOUT THE PROJECT. THE CONTRACTOR SHALL BE RESPONSIBLE FOR ANY DAMAGE TO UTILITIES.
- CONDUIT LOCATIONS ARE SHOWN FOR ILLUSTRATIVE PURPOSES. ACTUAL LOCATIONS SHALL BE DETERMINED BY THE CONTRACTOR IN THE FIELD.
- CONTRACTOR SHALL COORDINATE WITH THE CITY SIGNAL/ILLUMINATION TECHNICIAN AT 253-405-4390 PRIOR TO CONSTRUCTION.
- THE LOCATION OF ALL CONDUITS, JUNCTION BOXES, POLES, AND CABINETS SHOWN ON THIS PLAN MAY BE ADJUSTED IN THE FIELD TO AVOID CONFLICTS WITH AFFECTED UTILITY AGENCIES THROUGHOUT THE PROJECT. ALL FINAL LOCATIONS SHALL BE APPROVED BY THE CITY TRAFFIC ENGINEER PRIOR TO CONSTRUCTION.
- JUNCTION BOX LOCATIONS SHOWN ARE FOR ILLUSTRATIVE PURPOSES ONLY. JUNCTION BOXES SHALL BE FIELD LOCATED BY THE CONTRACTOR WITH DIRECTION FROM THE CITY.
- CONTRACTOR SHALL ADJUST JUNCTION BOX LIDS TO BE FLUSH WITH TOP OF SIDEWALK.
- ANY NEW JUNCTION BOX WHICH WILL BE LOCATED WITHIN OR PARTIALLY WITHIN SIDEWALK SHALL HAVE LIDS AND FRAMES WITH A NON-SLIP COATING ON THE TOP SURFACE EQUAL TO MEBAC1 OR SLIPNOT#3.

ILLUMINATION GENERAL NOTES

- THE LOCATION OF ALL CONDUITS, JUNCTION BOXES, POLES AND CABINETS SHOWN ON THIS PLAN MAY BE SLIGHTLY ADJUSTED IN THE FIELD TO AVOID CONFLICTS. ALL FINAL LOCATIONS SHALL BE APPROVED BY THE CITY ENGINEER PRIOR TO CONSTRUCTION.
- ALL CONDUCTORS FOR ALL ELECTRICAL EQUIPMENT SHALL BE LABELED IN EACH JUNCTION BOX.
- ALL CONDUITS SHALL BE RIGID HOT-DIPPED GALVANIZED STEEL OR SCHEDULE 80 PVC WHEN EXPOSED ABOVE THE GROUND. SEE SPECIAL PROVISIONS.
- ALL JUNCTION BOXES SHALL BE PLACED BEHIND SIDEWALK, UNLESS OTHERWISE NOTED.
- ALL WORK SHALL BE IN ACCORDANCE WITH CITY OF PUYALLUP STANDARDS AND SPECIFICATIONS.
- THE LOCATIONS OF FEATURES SHOWN ARE APPROXIMATE AND SHALL BE VERIFIED IN THE FIELD BY THE CONTRACTOR AS NECESSARY.
- THE CONTRACTOR SHALL SUBMIT A REQUEST TO THE INSPECTOR FOR MATERIALS APPROVAL AT THE EARLIEST POSSIBLE DATE, OR MIN. 30-DAYS PRIOR TO REQUIRED APPROVAL DATE.
- ALL WORK SHALL BE CONSISTENT WITH UTILITY AGENCY REQUIREMENTS. THE CONTRACTOR SHALL CONTACT ALL PERTINENT UTILITY AGENCIES 48 HOURS BEFORE COMMENCING WORK AND SHALL COORDINATE WITH AFFECTED UTILITY AGENCIES THROUGHOUT THE PROJECT.
- THE CONTRACTOR SHALL BE RESPONSIBLE FOR ANY DAMAGE TO EXISTING UTILITIES. THE CONTRACTOR SHALL NOTIFY THE AFFECTED UTILITY COMPANY AND THE CITY OF PUYALLUP IMMEDIATELY UPON DAMAGE.
- EXISTING FEATURES TO REMAIN UNLESS OTHERWISE NOTED.
- THE TOP ELEVATION OF ALL POLE FOUNDATIONS SHALL BE APPROVED BY THE INSPECTOR PRIOR TO PLACING CONCRETE.
- IF STREET LIGHT IS TO BE INSTALLED GREATER THAN 4 FEET FROM EDGE OF THE DRIVING SURFACE THE STREET LUMINAIRE ARMS SHALL BE ADJUSTED TO A DIMENSION THAT PROVIDES A MINIMUM OF 3-FT OVERHANG ONTO THE DRIVING SURFACE PER CITY OF PUYALLUP STANDARD PLAN 01.05.04.
- ANY NEW JUNCTION BOX WHICH WILL BE LOCATED WITHIN OR PARTIALLY WITHIN SIDEWALK SHALL HAVE LIDS AND FRAMES WITH A NON-SLIP COATING ON THE TOP SURFACE EQUAL TO MEBAC1 OR SLIPNOT#3.
- ALL PROJECT MATERIALS SHALL BE REVIEWED AND APPROVED BY THE CITY OF INSPECTOR PRIOR TO PROCUREMENT. MATERIALS NOT APPROVED BY THE CITY INSPECTOR SHALL NOT BE ALLOWED ON THE JOB SITE.
- SEE CITY OF PUYALLUP STANDARD PLANS 01.05.01 AND 01.05.02 FOR STREET LIGHT SPECIFICATIONS.
- AS PART OF THE DESIGN PROCESS, THE ENGINEER HAS ATTEMPTED TO CONFIRM THAT THERE ARE NOT CONFLICTS WITH OVERHEAD POWER LINES OR SUBSURFACE UTILITIES. HOWEVER, IT IS POSSIBLE FOR THE EXISTING OR PROPOSED CONDITIONS TO CHANGE PRIOR TO IMPLEMENTATION OF THE SCOPE OF WORK IDENTIFIED ON THESE DOCUMENTS. AS THE FIRST ORDER OF BUSINESS, THE CONTRACTOR SHALL CONFIRM THAT THERE ARE NOT CONFLICTS WITH SUBSURFACE UTILITIES. ADDITIONALLY, THE CONTRACTOR SHALL CONFIRM THAT MINIMUM CIRCUMFERENTIAL CLEARANCES, AS NOTED IN WAC 296-159-5340B TABLE 4 - MINIMUM CLEARANCE DISTANCES, ARE PROVIDED. PRIOR TO POLE PLACEMENT, ADDITIONAL CLEARANCE MAY BE REQUIRED AS DIRECTED BY THE UTILITY. THE CONTRACTOR SHALL CONTACT THE ENGINEER IMMEDIATELY IF A CONFLICT IS DISCOVERED.

ILLUMINATION WIRING SCHEDULE

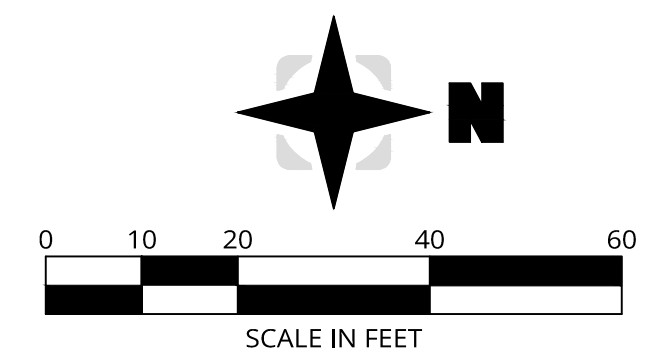
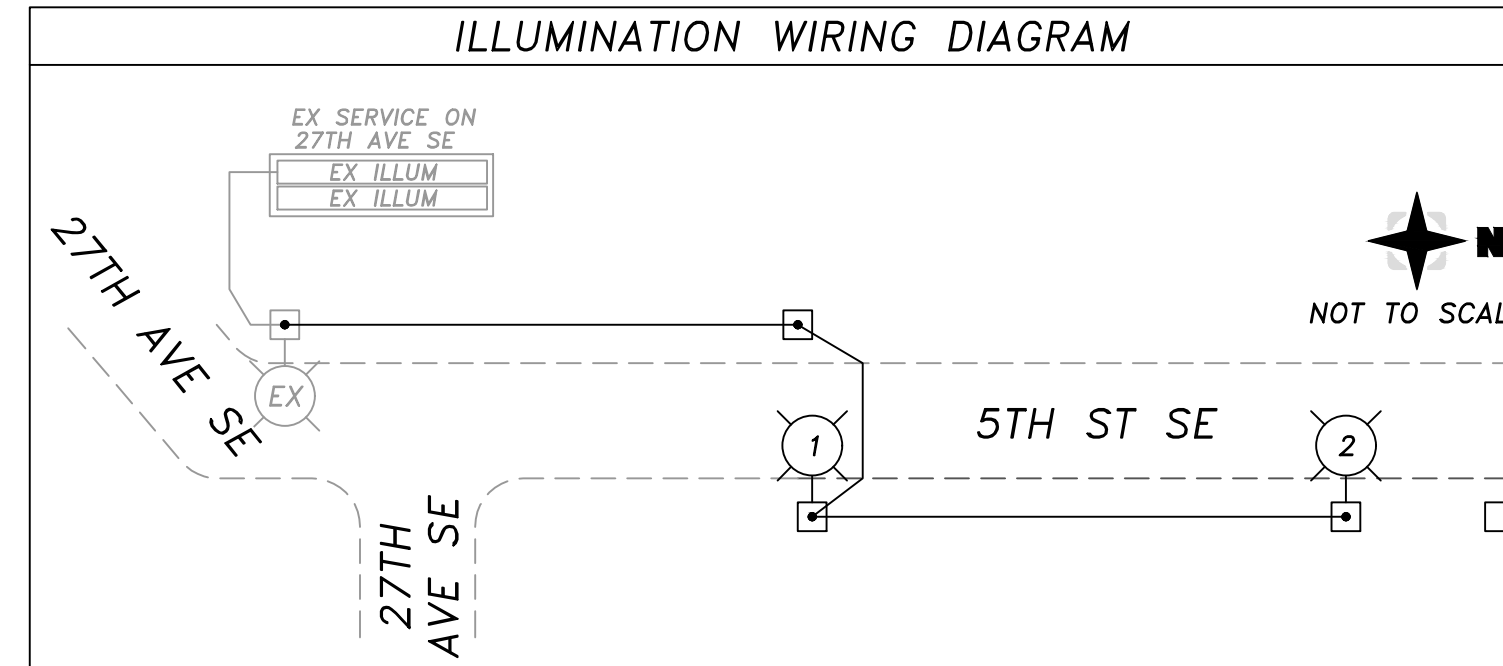
NO.	RACEWAY CONDUIT SIZE	ILLUM. #8			EQUIP. GRND. *	DETECT. PULL WIRE	CONDUIT FILL	ALLOW. FILL (26%)	ALLOW. FILL (40%)
		EX.	NEW	EX. NEW					
1	2" SCH40 PVC		2	1		0.17	0.86	---	
2	2" SCH80 PVC		2	1		0.17	0.75	---	
2	2" SCH80 PVC SPARE				1	---	0.75	---	
3	2" SCH40 PVC SPARE				1	---	0.86	---	
3	2" SCH40 PVC SPARE				1	---	0.86	---	
4	2" SCH40 PVC		2	1		0.17	0.86	---	
4	2" SCH40 PVC SPARE				1	---	0.86	---	

* EQUIPMENT GROUND SIZE SHALL BE EQUAL TO OR LARGER THAN THE LARGEST WIRE SIZE IN THE CONDUIT.

ILLUMINATION CONSTRUCTION NOTES

- CONSTRUCT FOUNDATION PER CITY OF PUYALLUP STANDARD PLAN 01.05.06. FURNISH AND INSTALL NEW LUMINAIRE WITH SHORTING CAP, POLE AND ARM PER CITY OF PUYALLUP STANDARD PLANS 01.05.01, 01.05.02, 01.05.03 & 01.05.04, AND PER ILLUMINATION POLE SCHEDULE, THIS SHEET.
- INSTALL NEW JUNCTION BOX PER CITY OF PUYALLUP STANDARD PLAN 01.06.01.
- EXTEND NEW CONDUIT TO EXISTING JUNCTION BOX. PULL NEW ILLUMINATION CONDUCTORS THROUGH EXISTING CONDUIT TO EXISTING JUNCTION BOX AND SPLICE NEW ILLUMINATION CONDUCTORS TO EXISTING ILLUMINATION CONDUCTORS USING CITY-APPROVED SPLICE KIT.
- EXISTING SERVICE CABINET AT APPROXIMATELY 700' EAST OF THE INTERSECTION OF S MERIDIAN AND 27TH AVE SE TO REMAIN. PROTECT DURING CONSTRUCTION.
- EXISTING STREET LIGHT POLE TO REMAIN. PROTECT DURING CONSTRUCTION.

ILLUMINATION WIRING DIAGRAM



CITY OF PUYALLUP POLE SPACING REQUIREMENTS

ROADWAY	CLASSIFICATION	MAX. SPACING*
5TH ST SE	LOCAL	300'

* CITY OF PUYALLUP STANDARDS SECTION 102.12

ILLUMINATION POLE SCHEDULE

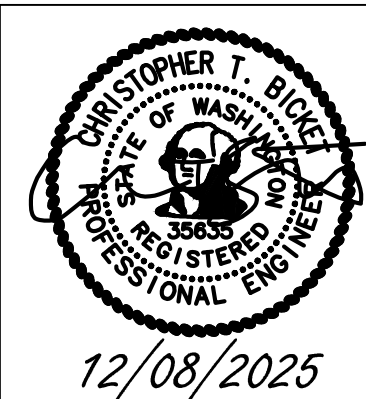
LUM. POLE NO.	POLE ID#	STREET	STATION*	OFFSET*	POLE HEIGHT	MOUNT. HEIGHT	VOLTAGE	ARM LENGTH	SERVICE/CIRCUIT	WATTAGE /TYPE	INITIAL LUMENS	LUMINAIRE TYPE	DISTRIB. TYPE	COLOR TEMP.	POLE TYPE	BASE	COMMENT
1	---	5TH ST SE	17+86.5	22.5' RT	~28'	30'	240	8'	EX ILLUM	54W LED	7,992	GCJ3-30J-MV-40K-2R-GY-080-SC	II	4000K	ROUND STEEL	FIXED	INSTALL FOUNDATION PER CITY OF PUYALLUP STD 01.05.06.
2	---	5TH ST SE	20+61.5	22.5' RT	~28'	30'	240	8'	EX ILLUM	54W LED	7,992	GCJ3-30J-MV-40K-2R-GY-080-SC	II	4000K	ROUND STEEL	FIXED	INSTALL FOUNDATION PER CITY OF PUYALLUP STD 01.05.06.

* STATIONING AND OFFSETS ARE APPROXIMATE. CONTRACTOR SHALL CONFIRM ADJUSTMENTS WITH ENGINEER PRIOR TO IMPLEMENTING.

APPROVED
BY: _____
CITY OF PUYALLUP
DEVELOPMENT ENGINEERING
DATE: _____

NOTES: THIS APPROVAL IS VOID AFTER 180 DAYS FROM APPROVAL DATE. THE CITY WILL NOT BE RESPONSIBLE FOR ERRORS AND/OR OMISSIONS ON THESE PLANS. FIELD CONDITIONS MAY DICTATE CHANGES TO THESE PLANS AS DETERMINED BY THE DEVELOPMENT ENGINEERING MANAGER.

REVISION	DATE	BY



TENW CONTACT:
STELLA S. OH, P.E.
PROJECT MANAGER
STELLA@TENW.COM
206-412-6743

ISSUE DATE: 12-08-2025
JOB NO.: TENW #2025-344
DESIGNED BY: DVB/SSO
DRAWN BY: DVB
APPROVED BY: CTB



BRADBURY PLACE LLC
7809 PACIFIC AVE
TACOMA, WA 98408
253-318-5711
KGRODY54@GMAIL.COM
KEN RODY

BRADBURY PLACE TOWNHOMES
PUYALLUP, WA

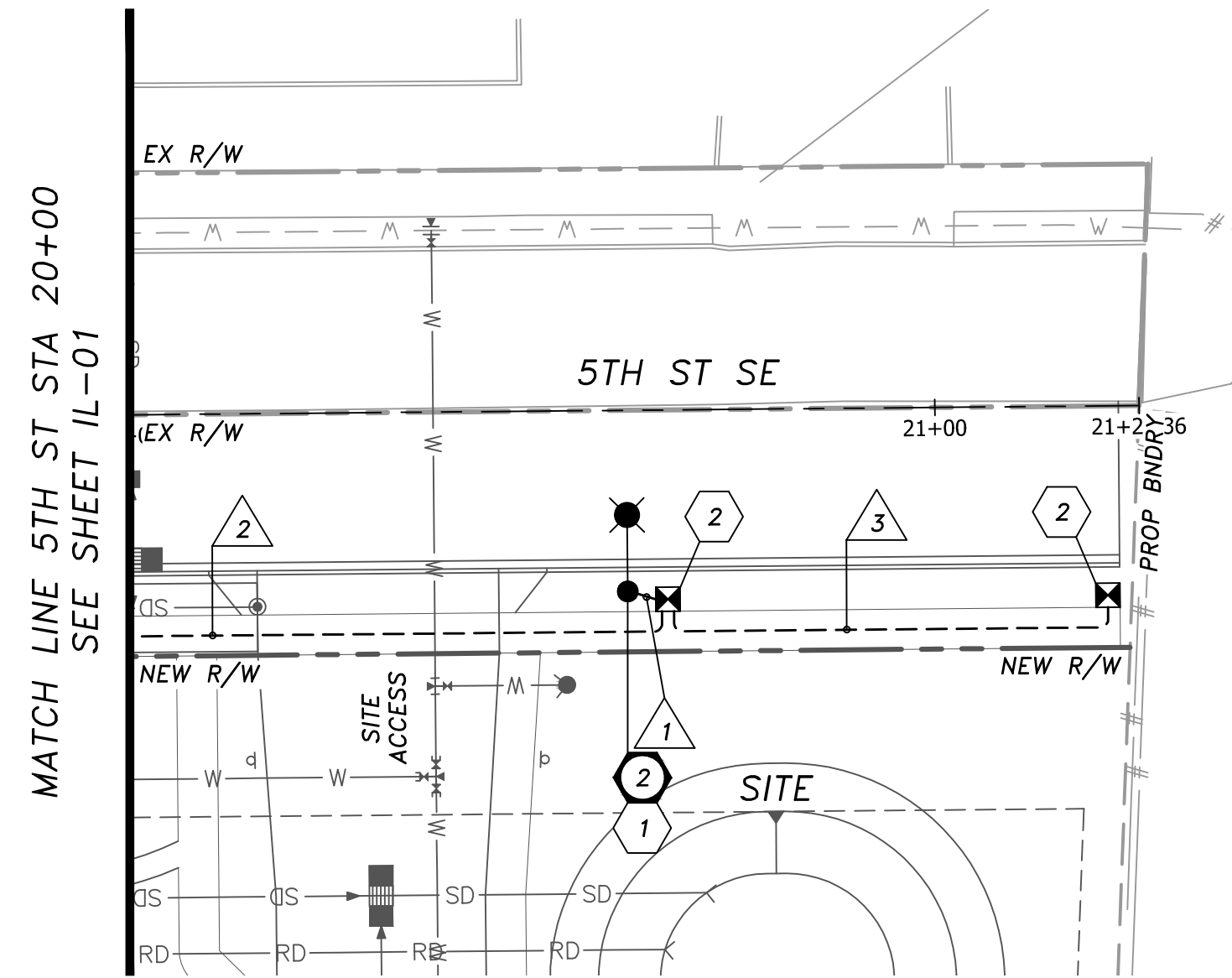
ILLUMINATION PLAN

IL-01

SHEET:
1
OF
3

City standards require 12ft arms.

SECTION 03, TOWNSHIP 19 NORTH, RANGE 4 E., W.M.



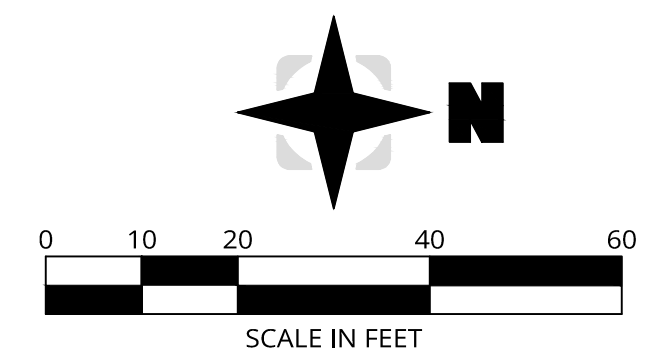
LINE LOSS CALCULATIONS								
ILLUM A	240	Service Voltage	A	L	R	Vd=2ALR		
Circuit Segment	Conductor Size (#)	(Watts) Load on Segment	Load on Segment (AMPS)	Length (Ft)	Resistance (ohms / Ft)	Voltage Drop (Volts)	LookUp	Σ Voltage Drop (Volts)
SVC to JB	8	432	2.16	15	0.000809	0.05	0.000809	0.05
JB to EX1	8	432	2.16	130	0.000809	0.45	0.000809	0.51
EX1 to EX2	8	216	1.08	150	0.000809	0.26	0.000809	0.77
EX2 to EX3	8	162	0.81	300	0.000809	0.39	0.000809	1.16
EX3 to IL1	8	108	0.54	380	0.000809	0.33	0.000809	1.49
IL1 to IL2	8	54	0.27	290	0.000809	0.13	0.000809	1.62
IL2 to Fixture2	10	54	0.27	38	0.001290	0.03	0.001290	1.52
%Voltage Drop=			0.63	Σ of Voltage Drop=		1.5		

ILLUMINATION WIRING SCHEDULE										
NO.	RACEWAY CONDUIT SIZE	ILLUM. #8		EQUIP. GRND. *		DETECT. PULL WIRE		CONDUIT FILL	ALLOW. FILL (26%)	ALLOW. FILL (40%)
		EX.	NEW	EX.	NEW	EX.	NEW			
1	2" SCH40 PVC		2		1			0.17	0.86	---
2	2" SCH80 PVC		2		1			0.17	0.75	---
	2" SCH80 PVC SPARE						1	---	0.75	---
3	2" SCH40 PVC SPARE						1	---	0.86	---
	2" SCH40 PVC SPARE						1	---	0.86	---
4	2" SCH40 PVC		2		1			0.17	0.86	---
	2" SCH40 PVC SPARE						1	---	0.86	---

* EQUIPMENT GROUND SIZE SHALL BE EQUAL TO OR LARGER THAN THE LARGEST WIRE SIZE IN THE CONDUIT.

ILLUMINATION CONSTRUCTION NOTES

- 1 CONSTRUCT FOUNDATION PER CITY OF PUYALLUP STANDARD PLAN 01.05.06. FURNISH AND INSTALL NEW LUMINAIRE WITH SHORTING CAP, POLE AND ARM PER CITY OF PUYALLUP STANDARD PLANS 01.05.01, 01.05.02, 01.05.03 & 01.05.04, AND PER ILLUMINATION POLE SCHEDULE, THIS SHEET.
- 2 INSTALL NEW JUNCTION BOX PER CITY OF PUYALLUP STANDARD PLAN 01.06.01.
- 3 EXTEND NEW CONDUIT TO EXISTING JUNCTION BOX. PULL NEW ILLUMINATION CONDUCTORS THROUGH EXISTING CONDUIT TO EXISTING JUNCTION BOX AND SPLICE NEW ILLUMINATION CONDUCTORS TO EXISTING ILLUMINATION CONDUCTORS USING CITY-APPROVED SPLICE KIT.
- 4 EXISTING SERVICE CABINET AT APPROXIMATELY 700' EAST OF THE INTERSECTION OF S MERIDIAN AND 27TH AVE SE TO REMAIN. PROTECT DURING CONSTRUCTION.
- 5 EXISTING STREET LIGHT POLE TO REMAIN. PROTECT DURING CONSTRUCTION.



APPROVED

BY _____
CITY OF PUYALLUP
DEVELOPMENT ENGINEERING

DATE _____

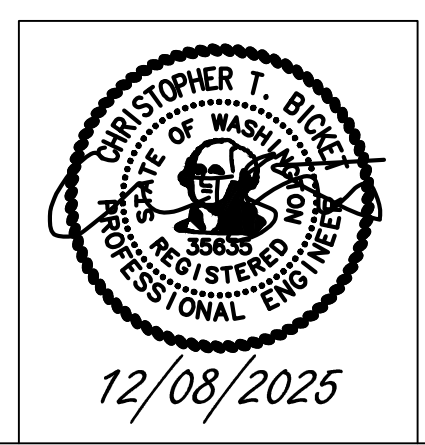
NOTES: THIS APPROVAL IS VOID AFTER 180 DAYS FROM APPROVAL DATE. THE CITY WILL NOT BE RESPONSIBLE FOR ERRORS AND/OR OMISSIONS ON THESE PLANS. FIELD CONDITIONS MAY DICTATE CHANGES TO THESE PLANS AS DETERMINED BY THE DEVELOPMENT ENGINEERING MANAGER.

ILLUMINATION POLE SCHEDULE																	
LUM. POLE NO.	POLE ID#	STREET	STATION*	OFFSET*	POLE HEIGHT	MOUNT. HEIGHT	VOLTAGE	ARM LENGTH	SERVICE/CIRCUIT	WATTAGE /TYPE	INITIAL LUMENS	LUMINAIRE TYPE	DISTRIB. TYPE	COLOR TEMP.	POLE TYPE	BASE	COMMENT
1	---	5TH ST SE	17+86.5	22.5' RT	~28'	30'	240	8'	EX ILLUM	54W LED	7,992	GCJ3-30J-MV-40K-2R-GY-080-SC	II	4000K	ROUND STEEL	FIXED	INSTALL FOUNDATION PER CITY OF PUYALLUP STD 01.05.06.
2	---	5TH ST SE	20+61.5	22.5' RT	~28'	30'	240	8'	EX ILLUM	54W LED	7,992	GCJ3-30J-MV-40K-2R-GY-080-SC	II	4000K	ROUND STEEL	FIXED	INSTALL FOUNDATION PER CITY OF PUYALLUP STD 01.05.06.

* STATIONING AND OFFSETS ARE APPROXIMATE. CONTRACTOR SHALL CONFIRM ADJUSTMENTS WITH ENGINEER PRIOR TO IMPLEMENTING.

ILLUMINATION LEGEND		
EXIST.	NEW/RELOCATED	DESCRIPTION
		JUNCTION BOX TYPE 1,2 ROADWAY LIGHT STANDARD
		CONDUIT/CONDUCTOR WIRE NOTE
		CONSTRUCTION NOTE POLE NUMBER

REVISION	DATE	BY



TENW CONTACT:

STELLA S. OH, P.E.
PROJECT MANAGER
STELLA@TENW.COM
206-412-6743

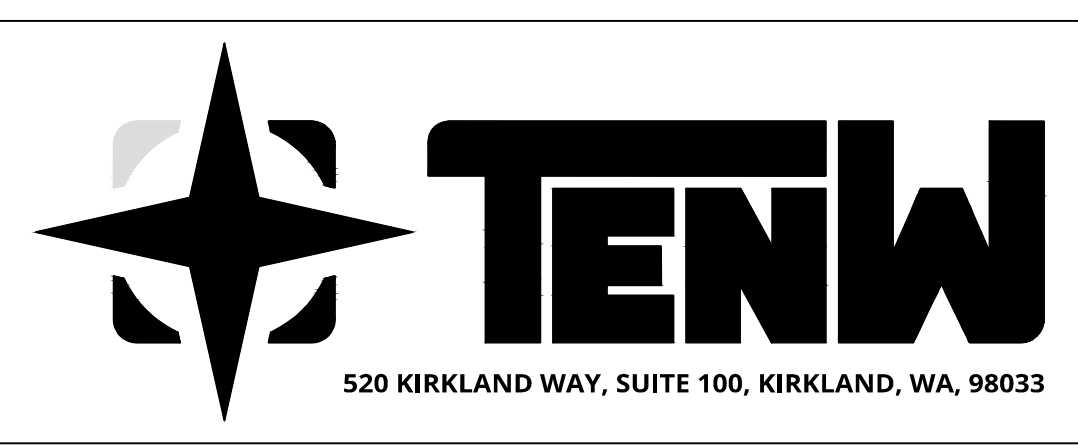
ISSUE DATE: 12-08-2025

JOB NO.: TENW #2025-344

DESIGNED BY: DVB/SSO

DRAWN BY: DVB

APPROVED BY: CTB



BRADBURY PLACE LLC
7809 PACIFIC AVE
TACOMA, WA 98408
253-318-5711
KGRODY54@GMAIL.COM
KEN RODY

**BRADBURY PLACE TOWNHOMES
PUYALLUP, WA**

ILLUMINATION PLAN

IL-02

SHEET:
2
OF
3

SECTION 03, TOWNSHIP 19 NORTH, RANGE 4 E., W.M.

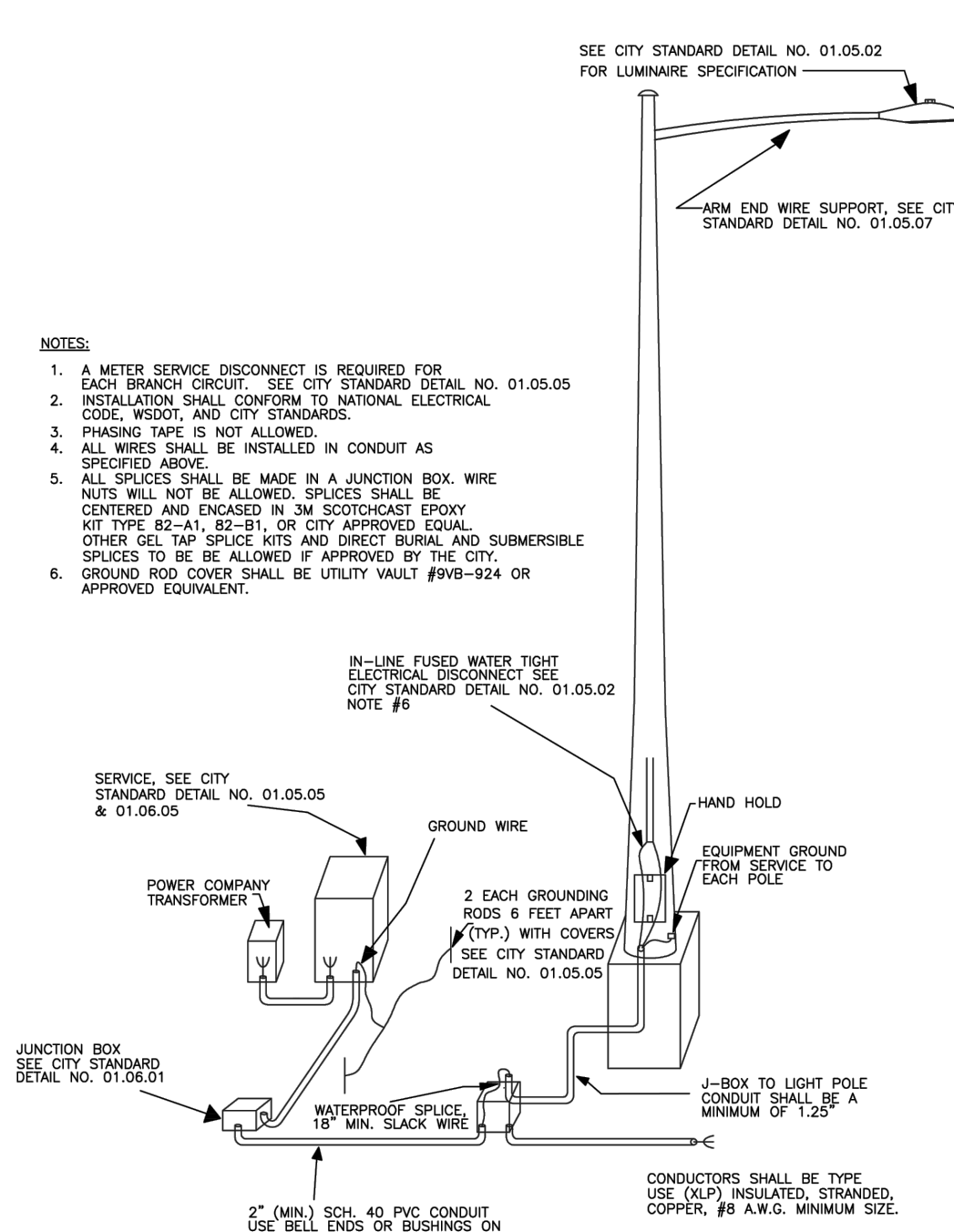
STREET LIGHTING SPECIFICATIONS

- 30-FOOT STEEL STREETLIGHT STANDARD
- DIMENSIONS**
STREETLIGHT STANDARDS SHALL PROVIDE A FIXTURE MOUNTING HEIGHT OF 30'0" PLUS OR MINUS 6" WITH A TYPICAL 12 FOOT MAST ARM WITH A THREE FOOT OVERHANG.
BASE PLATE SHALL HAVE SLOTTED HOLES TO ACCOMMODATE 1-INCH ANCHOR BOLTS, AND 1 1/2" BOLT CIRCLE WITH MINIMUM CLEARANCE OF 1" BETWEEN BOLT AND POLE.
HANDHOLE CENTER SHALL BE LOCATED APPROXIMATELY 12 INCHES FROM THE BASE PLATE, ROTATED 270 DEGREES FROM MAST ARM SO AS THE HANDHOLE IS LOCATED ON THE SIDE OPPOSING ONCOMING TRAFFIC.
- STRENGTH**
POLES SHALL MEET ALL STRENGTH REQUIREMENTS OF AASHTO FOR 90 MPH ISOTACH WHEN USED WITH A LUMINAIRE WEIGHING 48 POUNDS WITH A E.P.A. OF 1.1 SQUARE FEET. ALL ATTACHING BOLTS AND SCREWS THAT ARE NOT GALVANIZED SHALL BE STAINLESS STEEL.
- FINISH**
THE POLES AND ALL HARDWARE SHALL BE HOT DIPPED GALVANIZED, MINIMUM 3 MIL THICKNESS.
- MAST ARM ATTACHMENT SHALL BE SECURED BY 3 BOLTS.
- EACH POLE SHALL HAVE HANDHOLE (WITH COVER), GROUND LUG AND REMOVABLE POLE CAP.
- EACH CITY POLE SHALL HAVE A BLACK 4" TO 6" LETTER C STENCILED ON ROADWAY SIDE OF POLE 16" ABOVE GRADE.

- ANCHORAGE**
 - POLES SHALL BE ANCHORED WITH 4 BOLTS, 1"x36"x4" #8UNC WITH HOT DIPPED GALVANIZING AFTER THREADS ARE CUT. GALVANIZED AREA SHALL EXTEND FROM THREADED END FOR A MINIMUM OF 12 INCHES. BOLTS SHALL BE PROVIDED WITH 2 GALVANIZED NUTS AND FLAT WASHERS FOR LEVELING. SHIMS WILL NOT BE USED.
 - A NON-SHRINKING GROUT SHALL BE INSTALLED WITH ONE 1/2" DRAIN HOLE UNDER THE BASE PLATE AFTER THE ENGINEER HAS APPROVED THE POLE INSTALLATION.
- CONDUIT**
ALL CONDUIT SHALL BE BURIED A MINIMUM OF 24 INCHES DEEP. ALL ROADWAY CROSSINGS SHALL BE RIGID METALLIC OR SCHEDULE 80 PVC. CONDUIT SHALL CONFORM TO SECTION 9-29 OF WSDOT STANDARD SPECIFICATIONS, SCHEDULE 80 PVC MAY BE USED IN LOCATIONS OTHER THAN ROADWAY CROSSINGS.

(STR LIGHT SPECS CONTINUED)

- JUNCTION BOXES (WHEN REQUIRED)**
JUNCTION BOXES SHALL BE INSTALLED AT LOCATIONS AS SHOWN ON THE PLANS. THEY WILL CONFORM TO WSDOT STANDARD PLAN J-40-10-02, TYPE 1. THEY SHALL BE LEVEL WITH THE SIDEWALK GRADE, AND FIRMLY BEDDED TO PREVENT FUTURE SETTLING. JUNCTION BOXES ARE PREFERRED NOT TO BE INSTALLED IN THE SIDEWALK. THE COVER SHALL BE GALVANIZED AND GROUNDED. THE LETTERS "JT" SHALL BE ETCHED ON THE COVER. (SEE CITY STANDARD DETAIL NO. 01.06.01). IF THE JUNCTION BOX IS NOT IN THE SIDEWALK THEN IT SHALL HAVE A CONCRETE COLLAR. IF THE JUNCTION BOX IS IN THE SIDEWALK THEN IT SHALL HAVE A NON-SLIP SURFACE TREATMENT. (SEE CITY STANDARD DETAIL NO. 01.06.01).
- CONDUCTORS, WIRES, ETC.**
WIRE CONDUCTORS FOR UNDERGROUND FEEDER RUNS AND FOR CIRCUITRY FROM THE IN-LINE FUSE IN THE POLES TO THE JUNCTION BOX SHALL BE 600 VOLT, SINGLE CONDUCTOR STRANDED COPPER AND INSULATED WITH USE GRADE POLYVINYL CHLORIDE COMPOUND (XLP) OR APPROVED EQUAL IN ACCORDANCE WITH THE INSULATED POWER CABLE ENGINEER'S ASSOCIATION SPECIFICATIONS. AN AWG NO. 8 GREEN INSULATED STRANDED COPPER WIRE WILL BE RUN TO THE SERVICE GROUND LUG ON EACH POLE. FEEDERS SHALL BE SIZED IN ACCORDANCE WITH THE NATIONAL ELECTRICAL CODE. WIRES INSIDE THE POLE BETWEEN BALLAST AND IN-LINE FUSES SHALL BE ROME 20 AWG TO STRANDED POLE AND BRACKET WIRE OR APPROVED EQUAL. SPLICES WILL BE ALLOWED IN JUNCTION BOXES AND POLE BASES ONLY. NO MORE THAN 2 CONDUITS WILL BE ALLOWED INSIDE THE STREET POLE.
- FUSES**
LUMINAIRE FUSING AND ELECTRICAL CONNECTIONS AT LIGHT STANDARD BASES SHALL CONFORM TO SECTION 9-29.7 OF THE STATE OF WASHINGTON STANDARD SPECIFICATIONS AND AS SHOWN ON THE UNIFORM LUMINAIRE WIRING DETAIL IN THE APPENDIX. IN-LINE FUSE HOLDERS SHALL BE SEC MODEL 1791-SF WITH FNM-5 FUSES OR APPROVED EQUAL. (REFER TO CITY STANDARD DETAIL NO. 01.06.01)
- LUMINAIRES AND LAMPS**
RESIDENTIAL STREETS AND NEIGHBORHOOD COLLECTORS:
LEOTEK LED GC23-30UM-V40K-2R-GY-080-SC (\$4 WATT LED)
OR EVOLVE LED ERS1L-023-C34-0-D-GRAY-A-VI (194 WATT LED)
THE CITY WILL ENERGIZE THE STREET LIGHTS WHEN A HOME IS OCCUPIED ADJACENT TO A STREET LIGHT OR IMMEDIATELY ACROSS THE STREET. AT THE DEVELOPER'S REQUEST, STREET LIGHTS MAY BE ENERGIZED PRIOR TO OCCUPANCY OF HOMES. HOWEVER, THE DEVELOPER OR BUILDER SHALL ASSUME FULL RESPONSIBILITY FOR ELECTRICAL, POWER COSTS AND REPAIR COSTS DUE TO VANDALISM, THEFT, OR CONSTRUCTION.
- ARTERIALS AND COMMERCIAL COLLECTORS:**
GE EVOLVE LED ERS1L-023-C34-0-D-GRAY-A-VI (194 WATT LED)
THE CITY WILL ENERGIZE THE STREET LIGHTS WHEN A HOME IS OCCUPIED ADJACENT TO A STREET LIGHT OR IMMEDIATELY ACROSS THE STREET. AT THE DEVELOPER'S REQUEST, STREET LIGHTS MAY BE ENERGIZED PRIOR TO OCCUPANCY OF HOMES. HOWEVER, THE DEVELOPER OR BUILDER SHALL ASSUME FULL RESPONSIBILITY FOR ELECTRICAL, POWER COSTS AND REPAIR COSTS DUE TO VANDALISM, THEFT, OR CONSTRUCTION.
- SAFE WIRING LABELS**
THE CONTRACTOR IS ADVISED THAT SAFE WIRING LABELS REQUIRED BY LABOR AND INDUSTRIES SHALL APPLY ON THIS PROJECT. (ELECTRICAL INSPECTION STICKER)
- GUARANTEE**
THE CONTRACTOR SHALL SURRENDER TO THE CITY OF PUYALLUP ANY GUARANTEE OR WARRANTY ACQUIRED BY HIM AS A NORMAL TRADE PRACTICE IN CONNECTION WITH THE PURCHASE OF ANY MATERIALS OR ITEMS USED IN THE CONSTRUCTION OF THE ILLUMINATION.
- LOCATION**
SEE CITY STANDARD SECTION 01.01 ROADWAY DESIGN.



SEE CITY STANDARD DETAIL NO. 01.05.02 FOR LUMINAIRE SPECIFICATION

ARM END WIRE SUPPORT, SEE CITY STANDARD DETAIL NO. 01.05.07

IN-LINE FUSED WATER TIGHT ELECTRICAL DISCONNECT SEE CITY STANDARD DETAIL NO. 01.05.02 NOTE #6

SERVICE, SEE CITY STANDARD DETAIL NO. 01.05.05 & 01.06.05

POWER COMPANY TRANSFORMER

GROUND WIRE

HAND HOLD

EQUIPMENT GROUND FROM SERVICE TO EACH POLE

2 EACH GROUNDING RODS 6 FEET APART (TYP) WITH COVERS, SEE CITY STANDARD DETAIL NO. 01.05.05

JUNCTION BOX SEE CITY STANDARD DETAIL NO. 01.06.01



WATERPROOF SPLICE MIN. SLACK WIRE

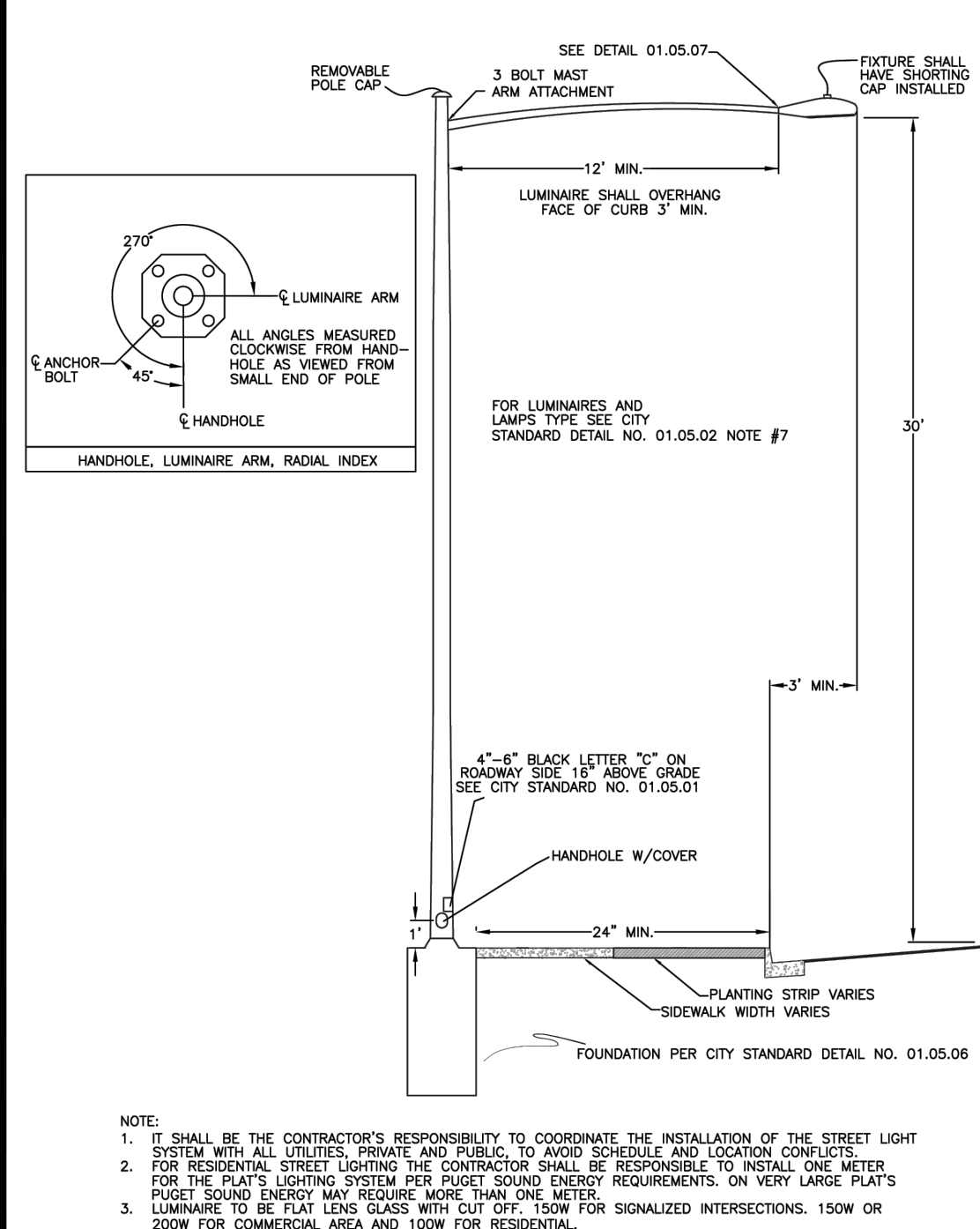
J-BOX TO LIGHT POLE CONDUIT SHALL BE A MINIMUM OF 1.25"

CONDUCTORS SHALL BE TYPE (E.P.A.) INSULATED, STRANDED, COPPER, #8 A.W.G. MINIMUM SIZE.

2" (MIN.) SCH. 40 PVC CONDUIT USE SEE END OR BUSHINGS ON ALL CONDUITS, SCH. 80 PVC FOR UNDER ROADWAY CROSSINGS.

NOTES:
1. A METER SERVICE DISCONNECT IS REQUIRED FOR EACH BRANCH CIRCUIT. (SEE CITY STANDARD DETAIL NO. 01.05.05)
2. INSTALLATION SHALL CONFORM TO NATIONAL ELECTRICAL CODE, WSDOT AND CITY STANDARDS.
3. PHASING TAP IS NOT ALLOWED.
4. ALL WIRES SHALL BE INSTALLED IN CONDUIT AS SPECIFIED ABOVE.
5. ALL SPLICES SHALL BE MADE IN A JUNCTION BOX. WIRE NUTS WILL NOT BE ALLOWED. SPLICES SHALL BE CENTERED AND ENCASED IN 3M SCOTCHCAST EPOXY KIT TYPE 82-A1, 82-B1, OR CITY APPROVED EQUAL. OTHER GEL TAP SPLICE KITS AND UNDER BURNAL AND SUBMERSIBLE SPLICES TO BE ALLOWED IF APPROVED BY THE CITY.
6. GROUND ROD COVER SHALL BE UTILITY WALK #948-924 OR APPROVED EQUIVALENT.

 CITY OF PUYALLUP DEVELOPMENT ENGINEERING and PUBLIC WORKS DEPARTMENTS	STREET LIGHT SPECIFICATIONS DEVELOPMENT ENGINEERING and PUBLIC WORKS DEPARTMENTS PREPARED BY: [Name] CHECKED BY: [Name] APPROVED BY: [Name] DATE: 01.05.01	 CITY OF PUYALLUP DEVELOPMENT ENGINEERING and PUBLIC WORKS DEPARTMENTS	STREET LIGHT SPECIFICATIONS (CONT.) DEVELOPMENT ENGINEERING and PUBLIC WORKS DEPARTMENTS PREPARED BY: [Name] CHECKED BY: [Name] APPROVED BY: [Name] DATE: 01.05.02
--	---	--	---



SEE DETAIL 01.05.07

3 BOLT MAST ARM ATTACHMENT

FIXTURE SHALL HAVE SHORTING CAP INSTALLED

12" MIN. LUMINAIRE SHALL OVERHANG FACE OF CURB 3" MIN.

FOR LUMINAIRES AND LAMP TYPE SEE CITY STANDARD DETAIL NO. 01.05.02 NOTE #7

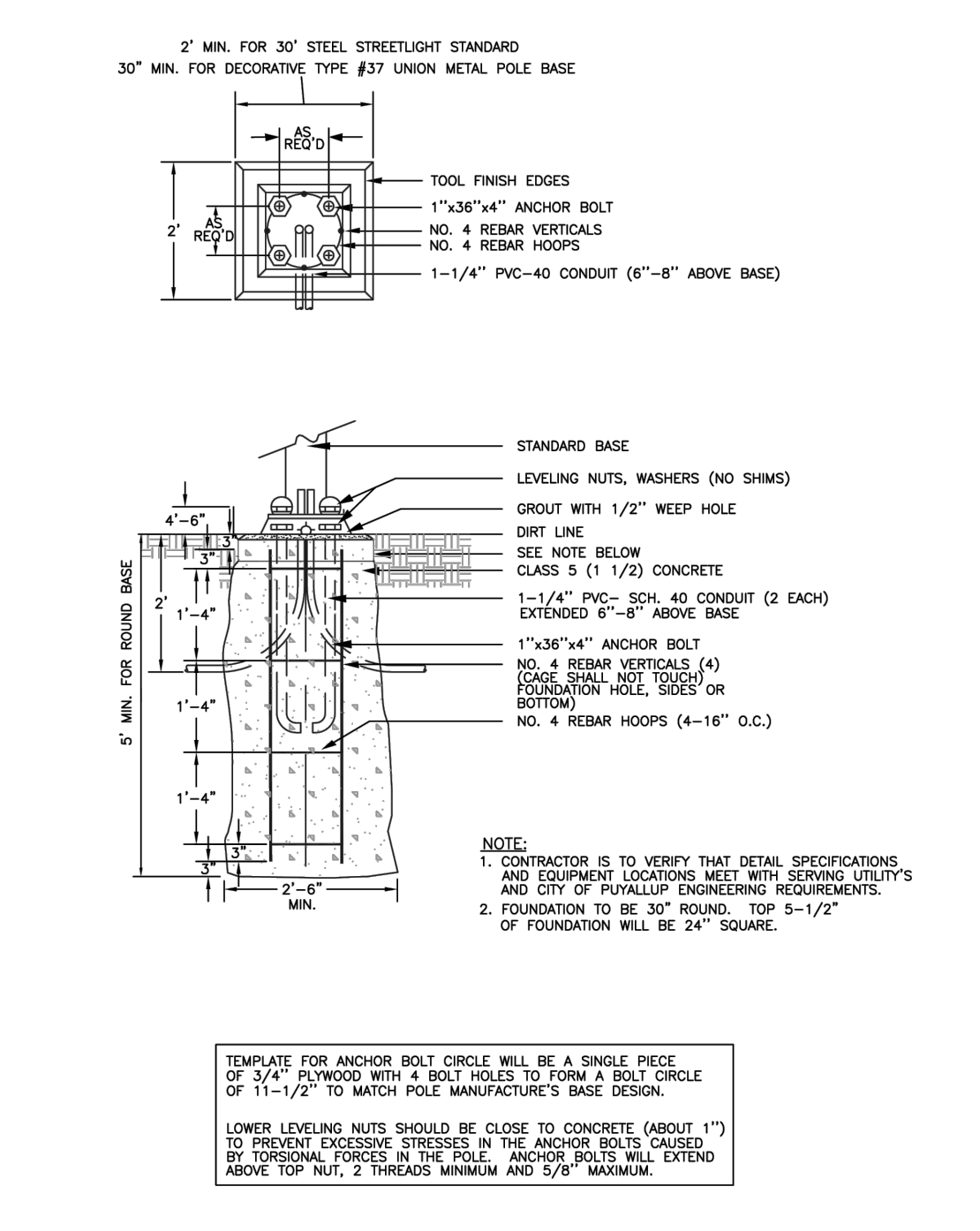
4"-8" BLACK LETTER "C" ON ROADWAY SIDE 16" ABOVE GRADE SEE CITY STANDARD NO. 01.05.01

HANDHOLE W/COVER

PLANTING STRIP VARIES SIDEWALK WIDTH VARIES

FOUNDATION PER CITY STANDARD DETAIL NO. 01.05.06

NOTE:
1. IT SHALL BE THE CONTRACTOR'S RESPONSIBILITY TO COORDINATE THE INSTALLATION OF THE STREET LIGHT SYSTEM WITH ALL UTILITIES, PRIVATE AND PUBLIC, TO AVOID SCHEDULE AND LOCATION CONFLICTS.
2. FOR RESIDENTIAL STREET LIGHTING THE CONTRACTOR SHALL BE RESPONSIBLE TO INSTALL ONE METER FOR THE PLANT'S LIGHTING SYSTEM PER PUGET SOUND ENERGY REQUIREMENTS. ON VERY LARGE PLANT'S PUGET SOUND ENERGY MAY REQUIRE MORE THAN ONE METER.
3. LUMINAIRE TO BE FLAT LEAD GLASS WITH CUT OFF TOW FOR SIGNALIZED INTERSECTIONS. 150W OR 200W FOR COMMERCIAL AREA AND 100W FOR RESIDENTIAL.



2" MIN. FOR 30' STEEL STREETLIGHT STANDARD
30' MIN. FOR DECORATIVE TYPE #37 UNION METAL POLE BASE

TOOL FINISH EDGES

1"x36"x4" ANCHOR BOLT NO. 4 REBAR VERTICALS NO. 4 REBAR HOOPS

1-1/4" PVC-SCH. 40 CONDUIT (6"-8" ABOVE BASE)

STANDARD BASE

LEVELING NUTS, WASHERS (NO SHIMS)

GROUT WITH 1/2" WEEP HOLE

DRY LINE

SEE NOTE BELOW

CLASS 5 (1 1/2) CONCRETE

1-1/4" PVC-SCH. 40 CONDUIT (2 EACH) EXTENDED 6"-8" ABOVE BASE

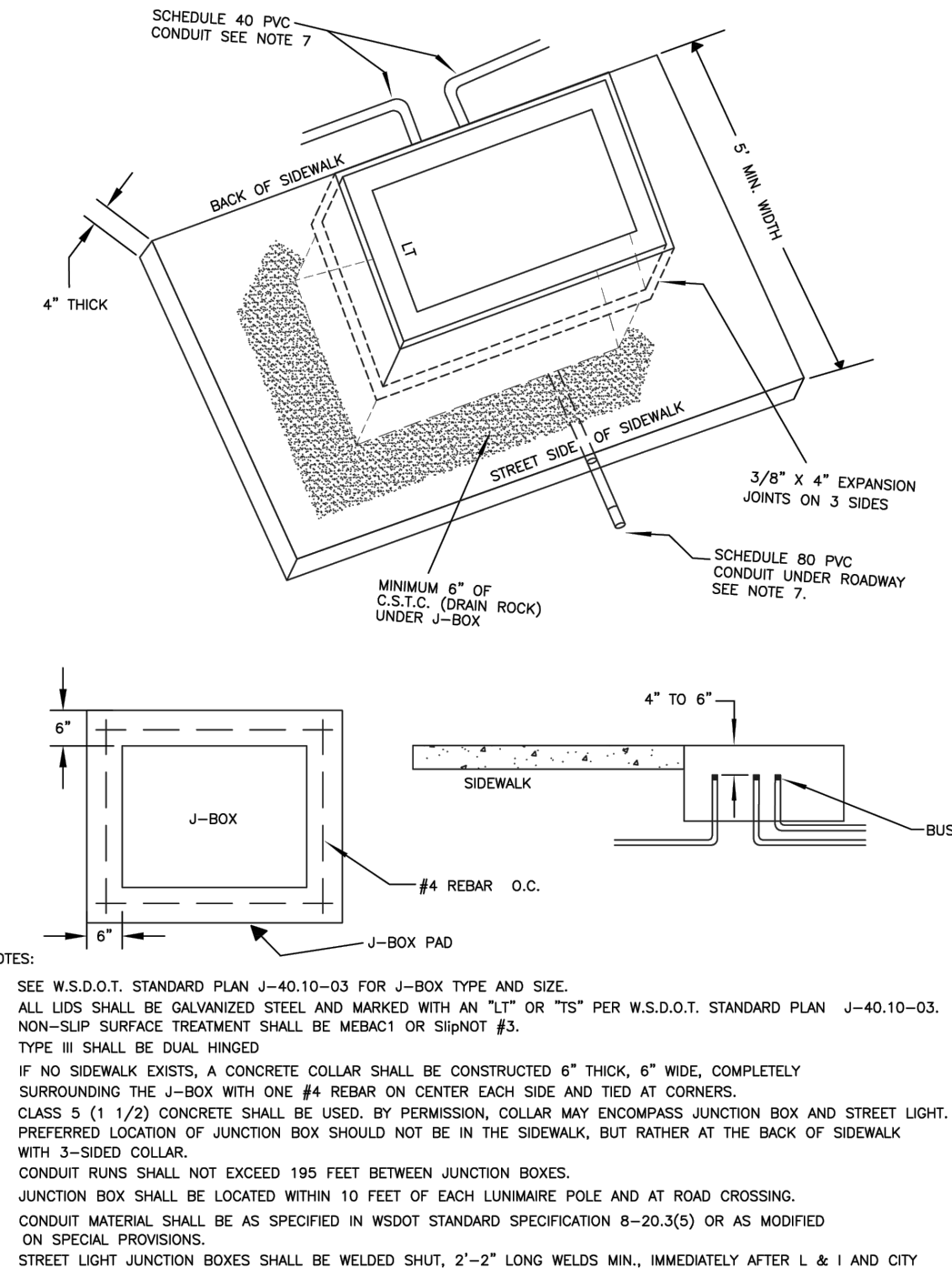
1"x36"x4" ANCHOR BOLT NO. 4 REBAR VERTICALS (4) CORE SHALL NOT TOUCH FOUNDATION HOLE, SIDES OR BOTTOM

NO. 4 REBAR HOOPS (4-16" O.C.)

NOTE:
1. CONTRACTOR IS TO VERIFY THAT DETAIL SPECIFICATIONS AND EQUIPMENT LOCATIONS MEET WITH SERVING UTILITIES AND CITY OF PUYALLUP ENGINEERING REQUIREMENTS.
2. FOUNDATION TO BE 30" ROUND, TOP 5-1/2" OF FOUNDATION WILL BE 24" SQUARE.

TEMPLATE FOR ANCHOR BOLT CIRCLE WILL BE A SINGLE PIECE OF 3/4" PLYWOOD WITH 4 BOLT HOLES TO FORM A BOLT CIRCLE OF 11-1/2" TO MATCH POLE MANUFACTURER'S BASE DESIGN.

LOWER LEVELING NUTS SHOULD BE CLOSE TO CONCRETE (ABOUT 1") TO PREVENT EXCESSIVE STRESSES IN THE ANCHOR BOLTS CAUSED BY TORSIONAL FORCES IN THE POLE. ANCHOR BOLTS TO BE EXTENDED ABOVE TOP NUT, 2 THREADS MINIMUM AND 5/8" MAXIMUM.



SCHEDULE 40 PVC CONDUIT SEE NOTE 7

4" THICK

BACK OF SIDEWALK

STREET SIDE OF SIDEWALK

3/8" X 4" EXPANSION JOINTS ON 3 SIDES

MINIMUM 6" OF C.S.T.C. (DRAIN ROCK) UNDER J-BOX

SCHEDULE 80 PVC CONDUIT UNDER ROADWAY SEE NOTE 7.

6"

4" TO 6"

SIDEWALK



BUSHING

J-BOX

#4 REBAR O.C.

J-BOX PAD

NOTES:
1. SEE W.S.D.O.T. STANDARD PLAN J-40-10-03 FOR J-BOX TYPE AND SIZE.
2. ALL LIDS SHALL BE GALVANIZED STEEL AND MARKED WITH AN "LT" OR "TS" PER W.S.D.O.T. STANDARD PLAN J-40-10-03. NON-SLIP SURFACE TREATMENT SHALL BE MEBACT1 OR SIGNOT #3.
3. TYPE III SHALL BE DUAL HINGED
4. IF NO SIDEWALK EXISTS, A CONCRETE COLLAR SHALL BE CONSTRUCTED 6" THICK, 6" WIDE, COMPLETELY SURROUNDING THE J-BOX WITH ONE #4 REBAR ON CENTER EACH SIDE AND TIED AT CORNERS. CLASS 5 (1 1/2) CONCRETE SHALL BE USED. BY PERMISSION, COLLAR MAY ENCOMPASS JUNCTION BOX AND STREET LIGHT. PREFERRED LOCATION OF JUNCTION BOX SHOULD NOT BE IN THE SIDEWALK, BUT RATHER AT THE BACK OF SIDEWALK WITH 3-SIDED COLLAR.
5. CONDUIT RUNS SHALL NOT EXCEED 195 FEET BETWEEN JUNCTION BOXES.
6. JUNCTION BOX SHALL BE LOCATED WITHIN 10 FEET OF EACH LUMINAIRE POLE AND AT ROAD CROSSING.
7. CONDUIT MATERIAL SHALL BE AS SPECIFIED IN WSDOT STANDARD SPECIFICATION 8-20.3(5) OR AS MODIFIED ON SPECIAL PROVISIONS.
8. STREET LIGHT JUNCTION BOXES SHALL BE WELDED SHUT, 2"-2" LONG WELDS MIN. IMMEDIATELY AFTER L & I AND CITY INSPECTIONS TO HELP PREVENT WIRE THEFT. OTHER THEFT PREVENTION METHODS MAY BE USED IF APPROVED BY THE CITY.

 CITY OF PUYALLUP DEVELOPMENT ENGINEERING and PUBLIC WORKS DEPARTMENTS	STREET LIGHT DEVELOPMENT ENGINEERING and PUBLIC WORKS DEPARTMENTS PREPARED BY: [Name] CHECKED BY: [Name] APPROVED BY: [Name] DATE: 01.05.04	 CITY OF PUYALLUP DEVELOPMENT ENGINEERING and PUBLIC WORKS DEPARTMENTS	CONCRETE STREETLIGHT FOUNDATION TYPICAL DEVELOPMENT ENGINEERING and PUBLIC WORKS DEPARTMENTS PREPARED BY: [Name] CHECKED BY: [Name] APPROVED BY: [Name] DATE: 01.05.06
--	--	--	---

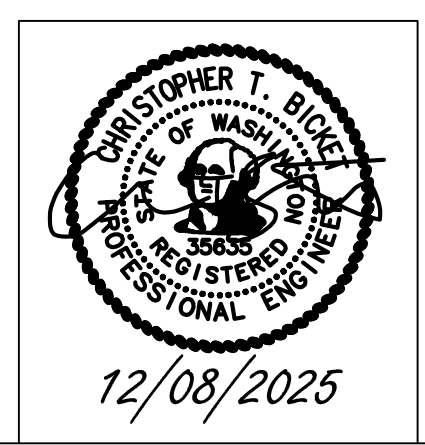
APPROVED

BY _____
CITY OF PUYALLUP
DEVELOPMENT ENGINEERING

DATE _____

NOTES: THIS APPROVAL IS VOID AFTER 180 DAYS FROM APPROVAL DATE.
THE CITY WILL NOT BE RESPONSIBLE FOR ERRORS AND/OR OMISSIONS ON THESE PLANS.
FIELD CONDITIONS MAY DICTATE CHANGES TO THESE PLANS AS DETERMINED BY THE DEVELOPMENT ENGINEERING MANAGER.

REVISION	DATE	BY



TENW CONTACT:

STELLA S. OH, P.E.
PROJECT MANAGER
STELLA@TENW.COM
206-412-6743

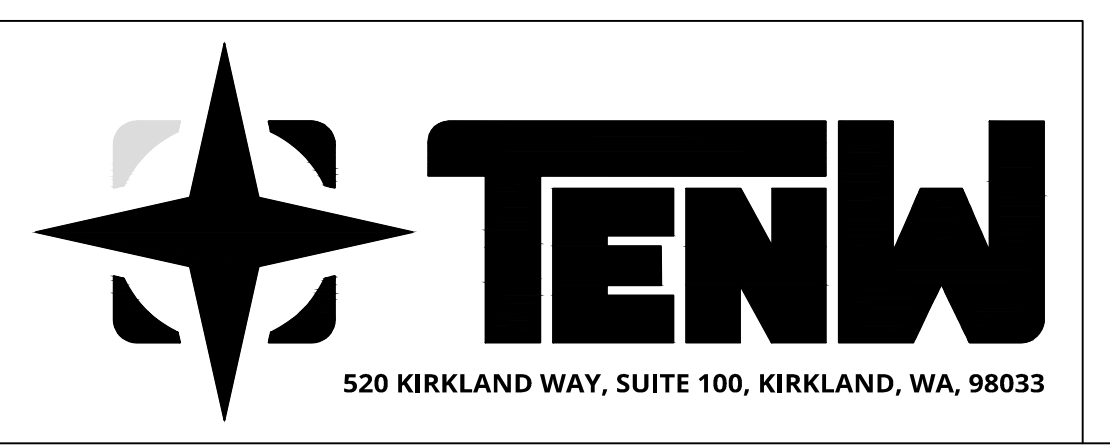
ISSUE DATE: 12-08-2025

JOB NO.: TENW #2025-344

DESIGNED BY: DVB/SSO

DRAWN BY: DVB

APPROVED BY: CTB



BRADBURY PLACE LLC
7809 PACIFIC AVE
TACOMA, WA 98408
253-318-5711
KGRODY54@GMAIL.COM
KEN RODY

**BRADBURY PLACE TOWNHOMES
PUYALLUP, WA**

ILLUMINATION DETAILS

IL-03

SHEET:
3
OF
3