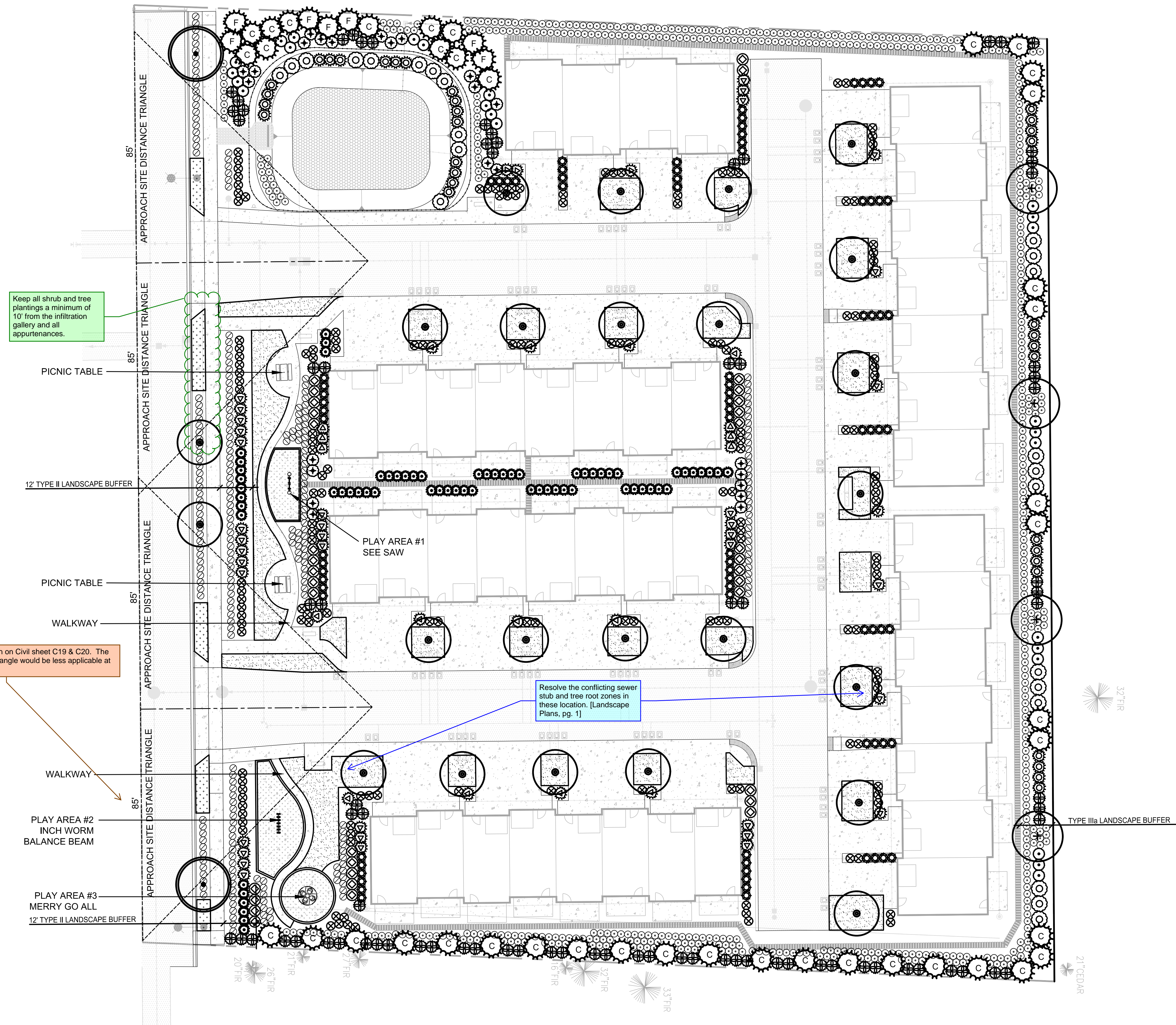


STREET TREES LOCATED IN VEHICULAR SIGHT DISTANCE AREA SHALL BE HIGH-LIMBED (8-10' ABOVE ROOT BALL) FROM NURSERY STOCK TO AVOID OBSTRUCTING TRAFFIC, PEDESTRIANS, AND STREET MAINTENANCE. ADDITIONAL PRUNING BY THE LANDSCAPE CONTRACTOR MAY BE NEEDED AT THE TIME OF INSTALLATION IF APPROPRIATE CLEARANCE IS NOT PROVIDED.

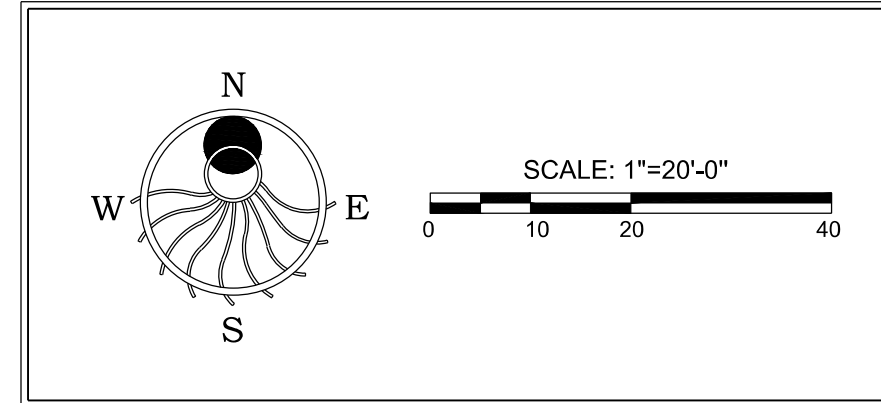
The trees shown on-site are conflicting with water meters and will conflict with the water services running off of those meters, which are not shown on this overlay. [Landscape Plan, pg. 1]



Keep all shrub and tree plantings a minimum of 10' from the infiltration gallery and all appurtenances.

Show ESD sight lines as shown on Civil sheet C19 & C20. The 85ft approach sight distance triangle would be less applicable at private driveways.

Resolve the conflicting sewer stub and tree root zones in these location. [Landscape Plans, pg. 1]



**BRADBURY PLACE
TOWNHOMES**
XXX 6TH STREET SOUTHEAST
PUYALLUP, WA

Eric J. Williams, Landscape Architect
LANDSCAPE ARCHITECTURE - SITE PLANNING
1529 South Seashore Drive
Tacoma, WA
253-676-4173
wstudio70@mhco.com

Drawing:
**LANDSCAPE
PLAN**

Date: 3-25-2026
Job #: bradbury-1-2023
Design: EJW
Drawn: EJW
Check: _____
Revisions: _____

Sheet:
L1.0

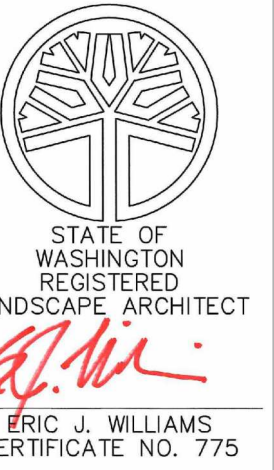
PLANT LEGEND

| QTY | BOTANICAL NAME | COMMON NAME | SIZE & SPACING |
|------------------------|----------------------------------|----------------------------------|--------------------------------|
| TREES | | | |
| 2 | GINKGO BILOBA 'PRINCETON SENTRY' | PRINCETON SENTRY GINKGO | 2" CALIPER, 30' O.C., 5' GRAFT |
| 4 | CORNUS NUTTALLII | PACIFIC DOGWOOD | 2" CALIPER, 40' O.C., 5' GRAFT |
| 24 | KOELREUTERIA PANICULATA | GOLDENCHAIN TREE | 2" CALIPER, 30' O.C., 5' GRAFT |
| 81 | CUPRESSUS ARIZONICA VAR. GLABRA | BLUE ICE SMOOTH CYPRESS | 6'-8' HEIGHT, 3' O.C. SPACING |
| 7 | PSEUDOTSUGA MENZIESII | DOUGLAS FIR | 6'-8' HEIGHT, 8' O.C. SPACING |
| 41 | THUJA PLICATA | WESTERN RED CEDAR | 6'-8' HEIGHT, 8' O.C. SPACING |
| SHRUBS | | | |
| 25 | SYMPHORICARPUS ALBUS | MOCKORANGE | 3 GALLON, 7.5' O.C. SPACING |
| 57 | ESCALLONIA EXONIENSIS 'FRADESII' | PINK PRINCESS ESCALLONIA | 3 GALLON, 4' O.C. SPACING |
| 82 | RIBES SANGUINEUM | RED FLOWERING CURRANT | 3 GALLON, 7.5' O.C. SPACING |
| 25 | CORNUS SERICEA | RED TWIG DOGWOOD | 3 GALLON, 4' O.C. SPACING |
| 34 | AZALEA 'HINO CRIMSON' | HINO CRIMSON AZALEA | 2 GALLON, 3' O.C. SPACING |
| 34 | SPIRAEA DOUGLASII | DOUGLAS SPIREA | 2 GALLON, 3' O.C. SPACING |
| 23 | RHODODENDRON MACROPHYLLUM | PACIFIC RHODODENDRON | 2 GALLON, 3' O.C. SPACING |
| 148 | CORNUS SERICEA 'KELSEY' | KELSEY DOGWOOD | 2 GALLON, 3' O.C. SPACING |
| 82 | CALAMAGROSTIS 'KARL FOERSTER' | KARL FOERSTER FEATHER REED GRASS | 2 GALLON, 3' O.C. SPACING |
| GROUND COVER | | | |
| 256 | ARCTOSTYPYLLOS UVA-URSI | KINNIKINNICK | 1 GALLON, 30" O.C. SPACING |
| 534 | GAULTHERIA SHALLON | SALAL | 1 GALLON, 30" O.C. SPACING |
| DAFFODIL BULBS | | | BULBS @ 12" O.C. SPACING |
| HYDROSEED MIXES | | | |
| SPECIAL SUN MIXTURE | | | BY COUNTRY GREEN TURF FARMS |
| PERENNIAL RYEGRASS | | 80% | 8 LBS PER 1000 SQ. FT. |
| FINE FESCUE | | 20% | |

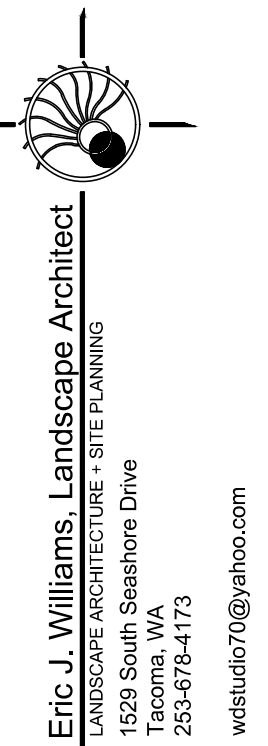
LANDSCAPE NOTES AND SOIL QUALITY

- PROVIDE LANDSCAPE PLANTING TO SCREEN ALL OUTDOOR UTILITY EQUIPMENT. PLANT OPTIONS INCLUDE: BLUE ICE ARIZONA CYPRESS, PURPLE ROCK ROSE, PINK PRINCESS ESCALLONIA, OR PACIFIC WAX MYRTLE.
- LANDSCAPE AREAS SHOULD BE DEEP-TILLED TO A DEPTH OF AT LEAST TWO (2) FEET (24) INCHES TO FACILITATE DEEP WATER PENETRATION AND SOIL OXYGENATION. PROVIDE SOIL AMENDMENTS ENCOURAGED TO IMPROVE WATER DRAINAGE, MOISTURE PENETRATION OR WATER-HOLDING CAPACITY. FOR ALL NEWLY LANDSCAPED AREAS ORGANIC MATTER SHOULD BE INCORPORATED TO A DEPTH OF FOUR (4) TO SIX (6) INCHES TO FACILITATE DEEP WATER PENETRATION AND SOIL OXYGENATION.
- CONTRACTOR SHALL PROVIDE 4" DEPTH IMPORTED TOPSOIL AT SEED MIX AREAS AND 9" DEPTH IMPORTED TOPSOIL AT ALL LANDSCAPE PLANTING AREAS.
- COMPACT ALL SEED MIX AREAS IN TWO DIRECTIONS WITH ROLLER PRIOR TO HYDROSEEDING.
- IMPORTED TOPSOIL SHALL BE 3-WAY MIX.
- CONTRACTOR SHALL PROVIDE 2" DEPTH FINE COMPOST MULCH THROUGHOUT LANDSCAPE PLANTING AREAS.
- CONTRACTOR SHALL GUARANTEE ALL PLANT MATERIALS FOR A PERIOD OF (1) ONE YEAR FROM TIME OF COMPLETION OF WORK.
- TREES PLANTED FIVE FEET OR LESS FROM PAVED SURFACES SHALL BE PLANTED WITH ROOT CONTROL BARRIER.

PLANT IMAGES



BRADBURY PLACE
TOWNHOMES
XXX 5TH STREET SOUTHEAST
PUYALLUP, WA

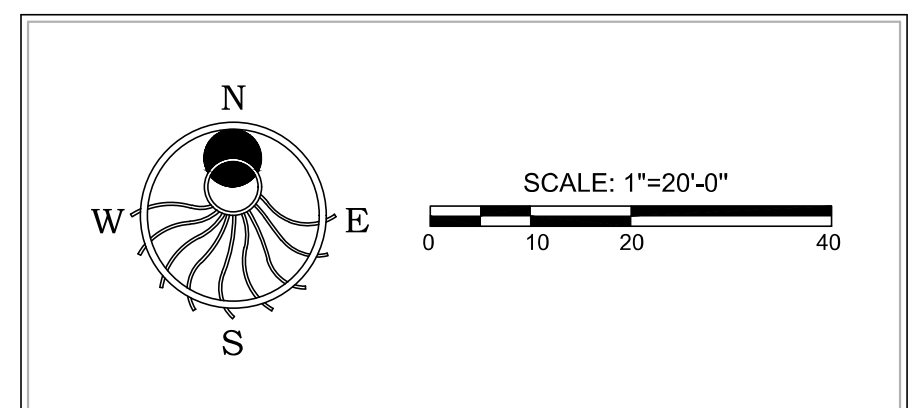


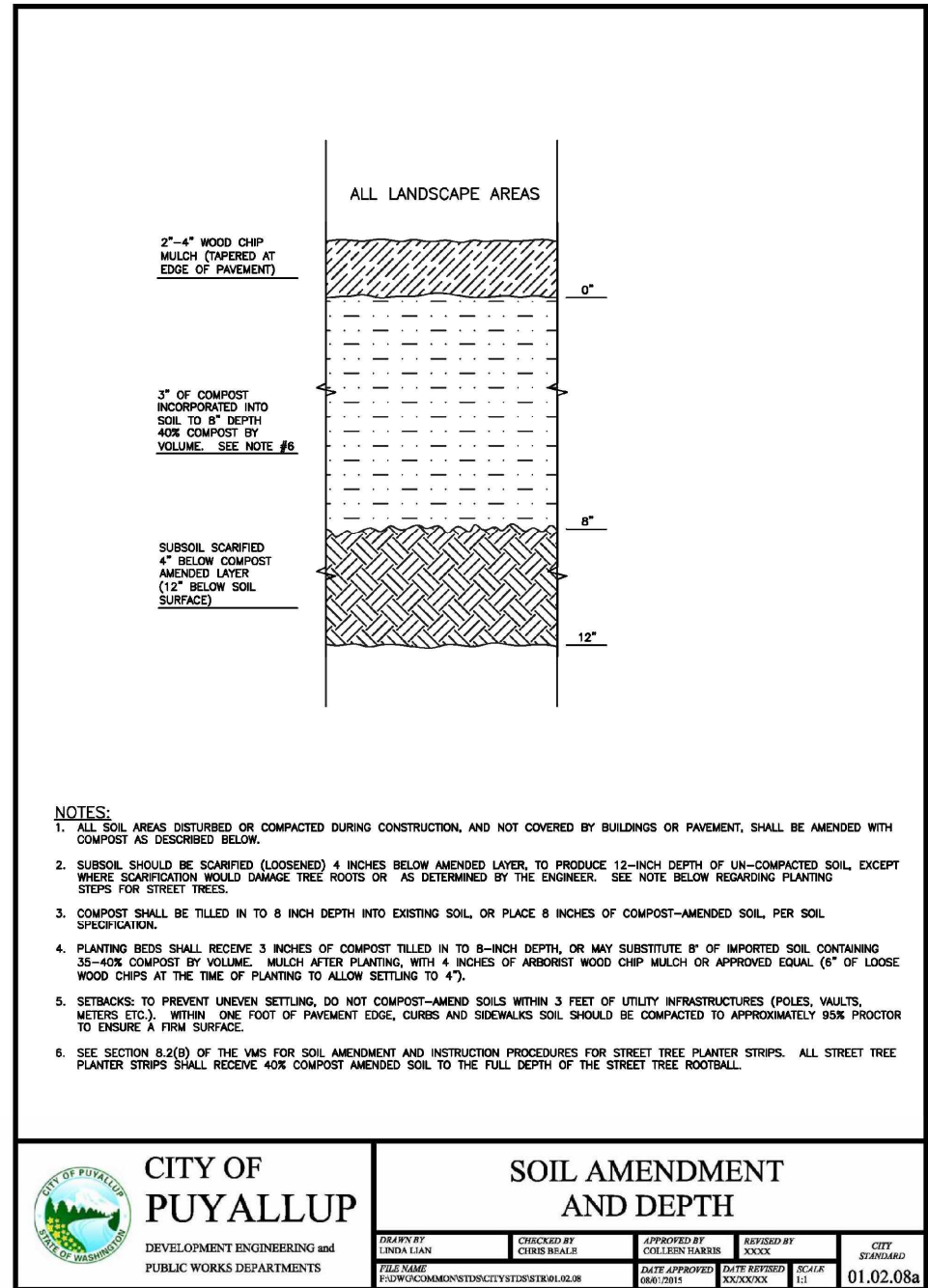
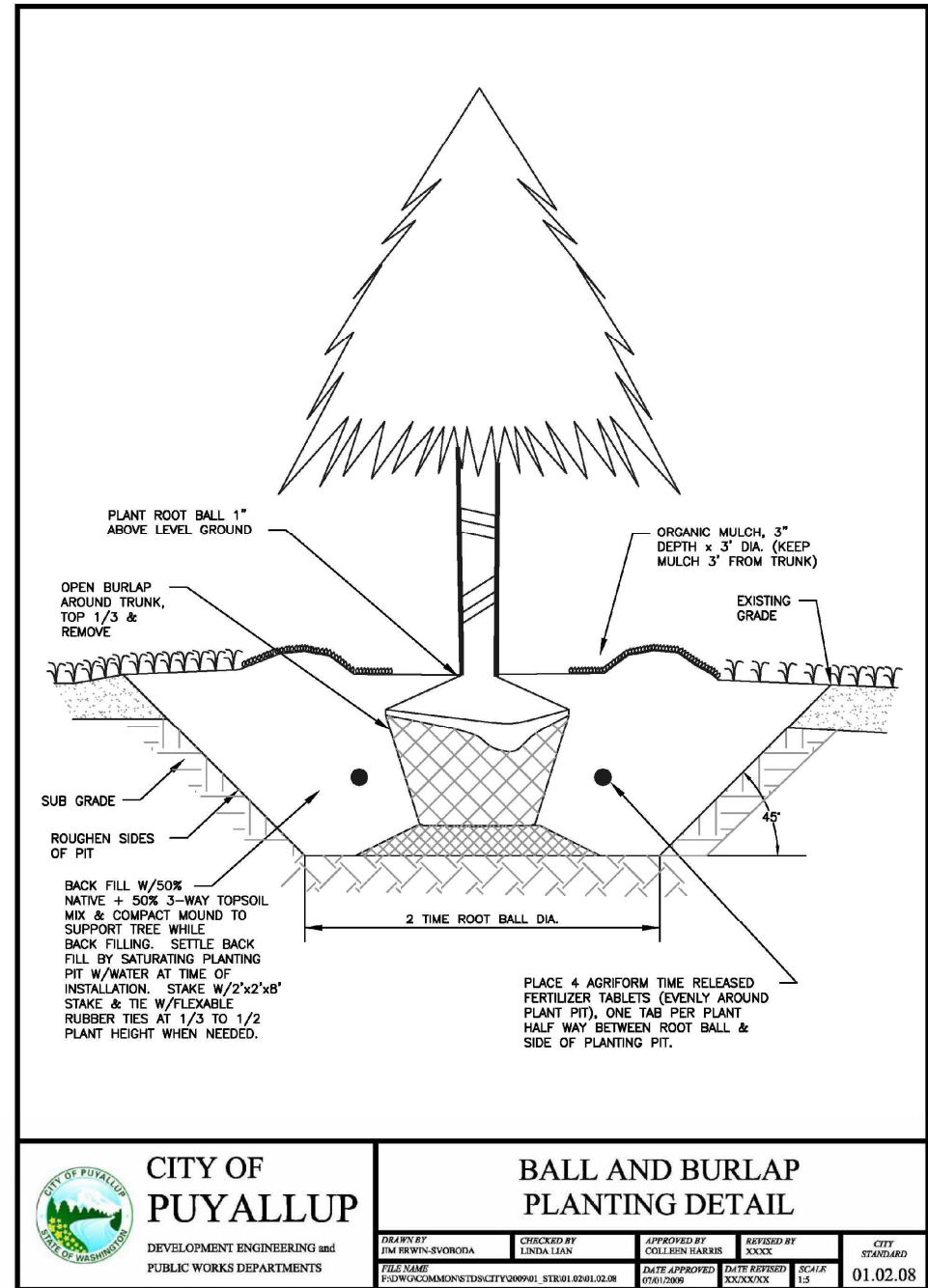
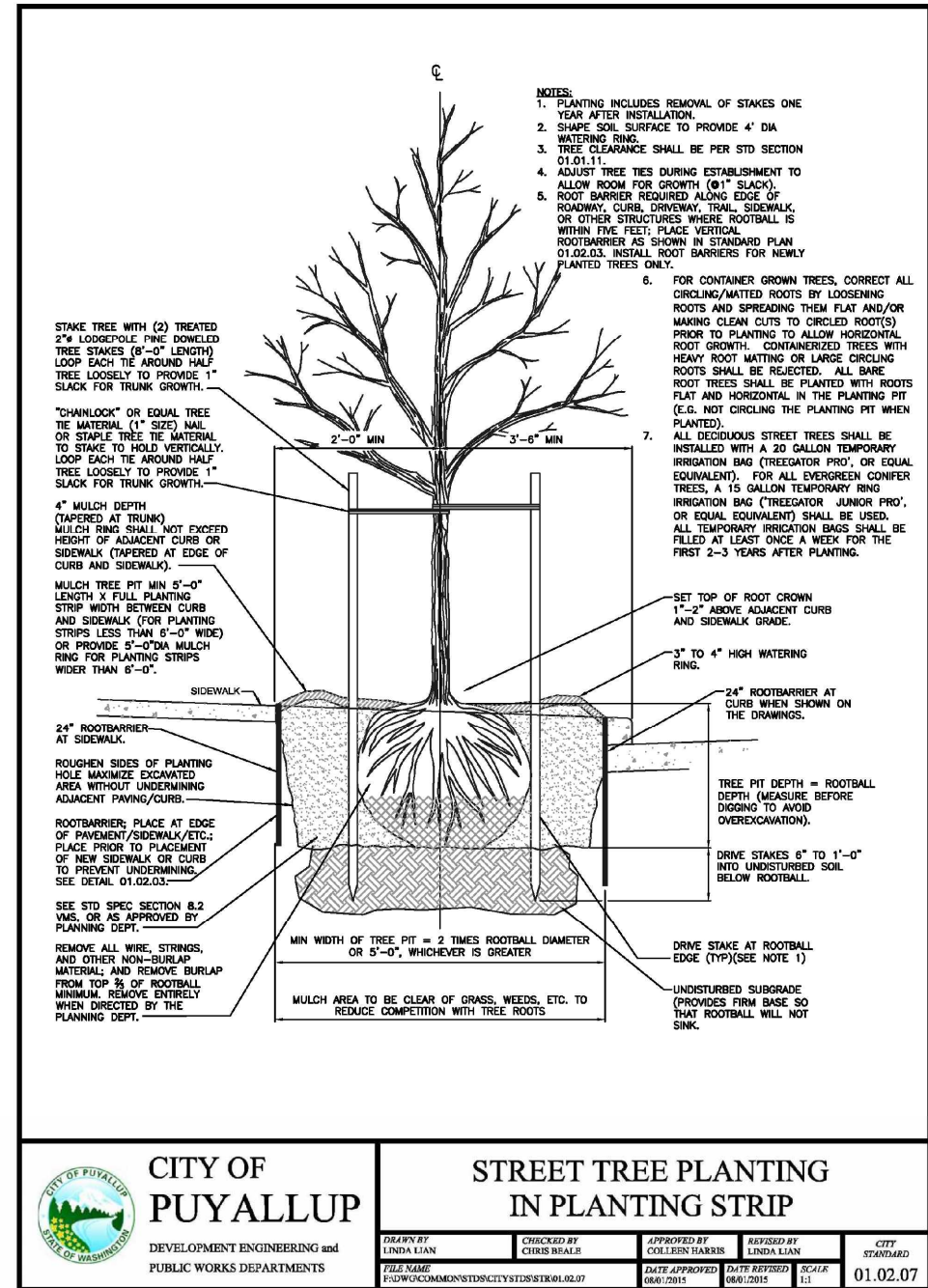
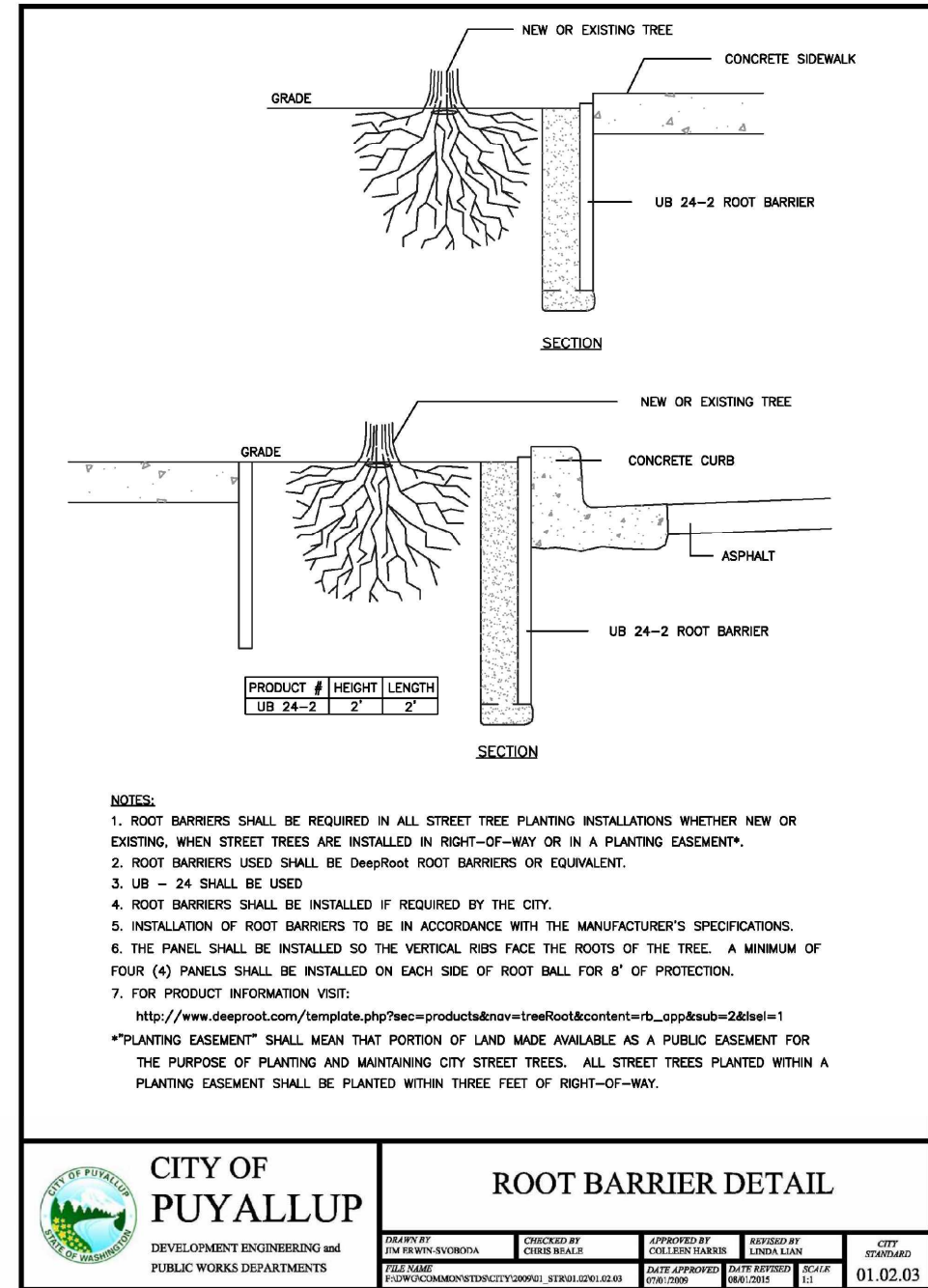
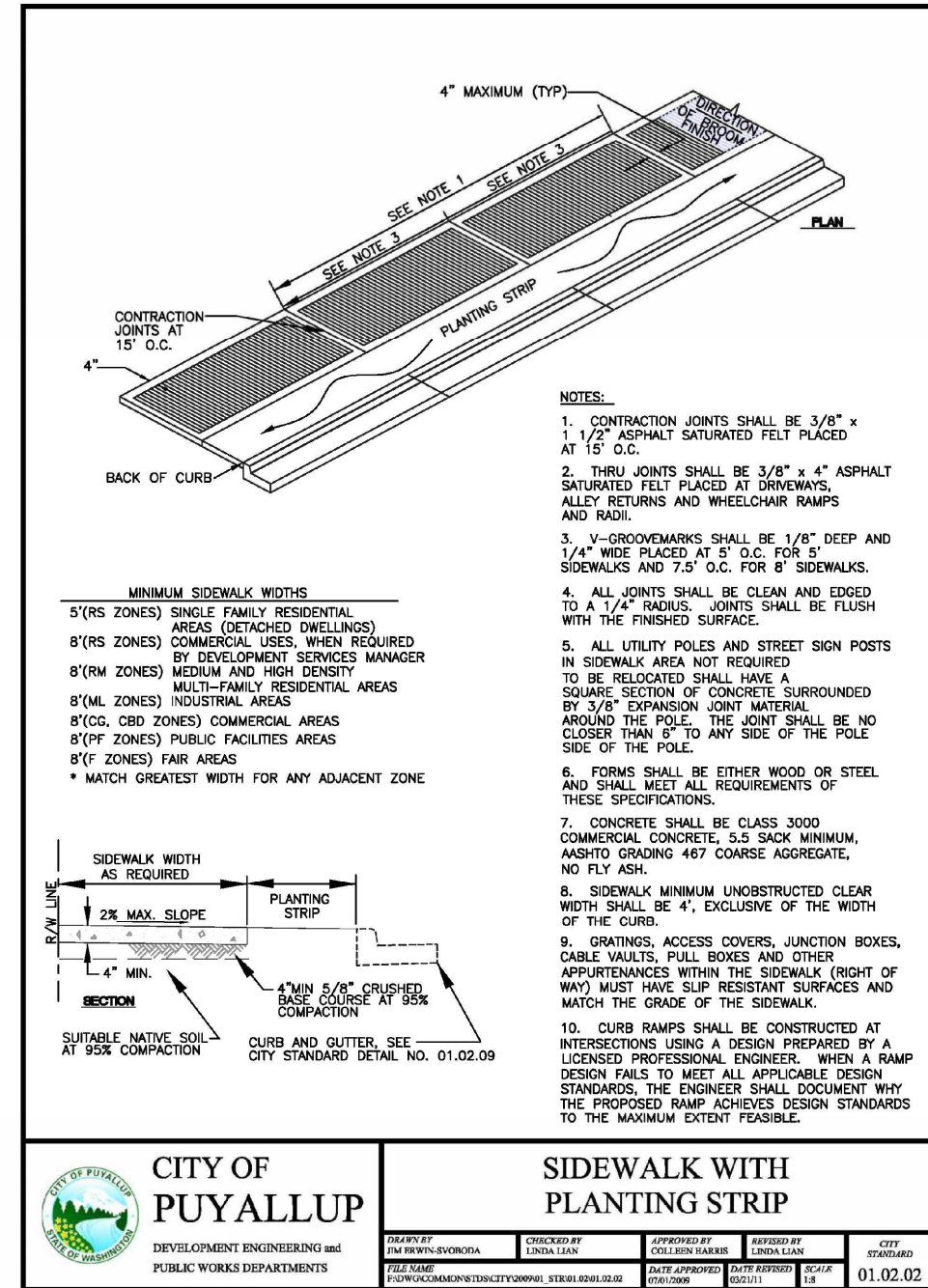
Drawing:
LANDSCAPE PLAN

Date: 3-25-2026
Job #: bradbury-1-2023
Design: EJW
Drawn: EJW
Check: _____
Revisions: _____

Sheet:

L1.1







The PlayLab SeeSaw is a fun and innovative take on a playground favorite. Children stand on the rubber-coated platforms, grip the handles and shift their body weight to produce the classic "seesaw" motion. The fully-enclosed rubber spring mechanism creates a smooth gliding motion and prevents abrupt stops and starts endemic to old-fashioned seesaws.

- Features and Benefits:**
- Unique design allows children to stand during play
 - Rubber spring mechanism provides smooth "seesaw" motion without sudden drops or lifts
 - Coated platforms provide slip-resistant surface

Model: 6261
Use Zone: 20' 1in X 13' 4in
Age Group: 5 to 12 Years

Limited Lifetime Warranty on uprights, hardware and connections. Visit gametime.com/warranty for full warranty information

1 PLAY AREA #1 - SEE SAW



The undulating design of our Inchworm Climber makes it a fun freestanding play activity, or a functional link between two areas of a playground. Body is constructed of durable steel and painted with a powder-coated finish. Rubber steps feature slip-resistant treads.

Features and Benefits:

- Fun way to functionally link two sections of a playground
- Enhances balance and coordination skills
- Inchworm design promotes active play and adds an extra element of fun
- Constructed of durable, recyclable materials and backed by the industry's leading warranty

Model: 8665
Use Zone: 13' 4" X 19' 4"
Fall Height: 4'
Age Group: 5 to 12 Years

Limited Lifetime Warranty on uprights, hardware and connections. Visit gametime.com/warranty for full warranty information

2 PLAY AREA #2 - INCH WORM BALANCE BEAM



Merry-Go-All is a fully accessible, forward-facing inclusive merry-go-round for up to 8 passengers (4 seated, 4 standing). It's a fun motion activity for everyone to enjoy. It features grip/grasp areas to hold onto while riding or pushing others. The center wheel remains stationary so children can work together to turn Merry-Go-All while seated. Available in multi-color...

Features and Benefits:

- Inclusive design with seats at transfer height
- Forward-facing design for up to 8 users (4 seated, 4 standing)
- Promotes social interaction and collaborative play
- Designed for use with an optional 5-point harness (not included)
- Durable, frictionless magnetic braking system to minimize speed

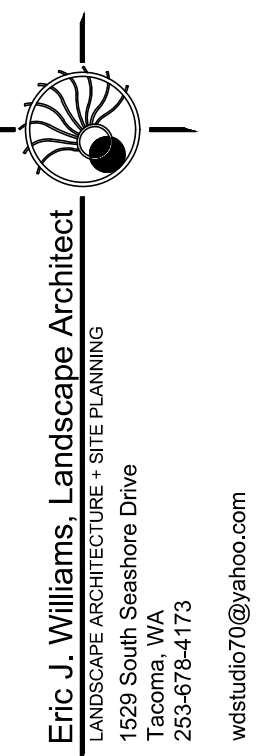
Model: 6272
Use Zone: 19' X 19'
Fall Height: 4'
Age Group: 2 to 5 Years
Age Group: 5 to 12 Years
Number of Children: 8

Limited Lifetime Warranty on uprights, hardware and connections. Visit gametime.com/warranty for full warranty information

3 PLAY AREA #3 - MERRY GO ALL



BRADBURY PLACE
TOWNHOMES
XXX 6TH STREET SOUTHEAST
PUYALLUP, WA



Drawing:

PLAY AREA
IMAGES

Date: 3-25-2026
Job # bradbury-1-2023
Design: EJW
Drawn: EJW
Check: _____
Revisions: _____

Sheet:

L1.3