

### HVAC GENERAL NOTES

- UNSIZE DUCTS SHALL MATCH THE SIZE OF THE LARGEST ADJACENT DUCT THAT IS SIZED. WHERE THE ADJACENT DUCT SIZE IS NOT SHOWN, PROVIDE THE FOLLOWING SIZED DUCTS (OR EQUIVALENT RECTANGULAR).
- WHERE DUCT SIZES ARE NOT SHOWN, SIZE DUCTS FOR A MAXIMUM VELOCITY OF 500 FT/MIN.
- VERIFY LOCATIONS OF ITEMS WITH ARCHITECTURAL PLANS PRIOR TO BEGINNING WORK. NOTIFY ARCHITECT/OWNER OF DISCREPANCIES.
- MECHANICAL EQUIPMENT 1/2 HP AND LESS SHALL HAVE STARTER/CONTROL RELAY PROVIDED BY DIVISION 23. STARTERS FOR MECHANICAL EQUIPMENT LARGER THAN 1/2 HP PROVIDED BY DIVISION 26.
- CONTRACTOR SHALL CAREFULLY COORDINATE WORK W/ ALL OTHER TRADES, ESPECIALLY IN CEILING SPACES WHERE SPACE IS TIGHT. SHEET METAL CONTRACTOR SHALL HAVE PRIORITY OVER OTHER MECHANICAL TRADES IN CEILING SPACE WHERE CONFLICTS OCCUR.
- ALL DUCTWORK SHOWN IS SCHEMATIC, CONTRACTOR SHALL PROVIDE ALL OFFSETS/ELBOWS AS REQ'D TO ALLOW ROUTING AROUND STRUCTURE, ELECTRICAL, & OTHER INTERFERENCES.
- ALL DUCT WALL PENETRATIONS THROUGH WALLS AND FLOORS SHALL BE PROVIDED WITH CLOSURE COLLARS AND BE TIGHTLY SEALED TO PREVENT THE TRANSMISSION OF NOISE.
- SHIFT AIR INLETS/OUTLETS FROM LOCATIONS SHOWN AS REQ'D TO AVOID CONFLICTS W/STRUCTURE & OTHER ITEMS. SUCH SHIFTS SHALL MAINTAIN SYMMETRY OF AIR TERMINALS & SHALL HAVE PRIOR APPROVAL OF ARCHITECT/ENGINEER.
- PROVIDE MANUAL VOLUME DAMPERS IN ALL BRANCH DUCTS AND SPLITS IN MAIN DUCTS AND WHERE REQ'D BY BALANCERS.

### ENERGY CODE REQUIREMENTS

- MATERIALS, METHODS, AND INSTALLATION SHALL COMPLY WITH THE PROVISIONS OF THE 2021 EDITION OF THE WASHINGTON STATE COMMERCIAL ENERGY CODE.
- HVAC EQUIPMENT SHALL MEET THE MINIMUM EFFICIENCIES (EER) LISTED IN THE WASHINGTON STATE ENERGY CODE TABLES C403.3.2.
- DAMPER LOCATIONS, LEAKAGE RATE, CONTROL TYPE, AND MAX CLEARANCE TO COMPLY WITH SECTION C403.7.8 OF THE WSEC
- INSULATE ALL DUCTS IN CONDITIONED SPACE TO R-3.3. INSULATE DUCTS IN UNCONDITIONED SPACE TO R-8. INSULATE OUTSIDE AIR DUCTS WITH R-16.
- KITCHEN HOOD EXHAUST DUCTS SHALL BE CONSTRUCTED TO 4" PRESSURE CLASSIFICATION PER SMACNA. ALL OTHER DUCTWORK SHOWN SHALL BE CONSTRUCTED TO 1" PRESSURE CLASSIFICATION PER SMACNA.
- ALL DUCT WORK SHALL BE SEALED. SEAL ALL TRANSVERSE JOINTS AND LONGITUDINAL SEAMS AS REQUIRED BY 603.90 OF THE INTERNATIONAL MECHANICAL CODE.
- PROVIDE ENERGY EFFICIENT MOTORS ON THE HVAC EQUIPMENT AS REQUIRED IN WASHINGTON STATE ENERGY CODE PARAGRAPH C405.8. MOTORS LESS THAN 1HP SHALL HAVE A MINIMUM EFFICIENCY OF 70%.
- ALL FANS SHALL HAVE A FAN EFFICIENCY INDEX (FEI) OF 1.00 OR HIGHER PER C403.8.3 OF THE WSEC
- TEST AND BALANCE EACH HVAC SYSTEM. ADJUST REGISTERS AND DAMPERS FOR AIR FLOW INDICATED ON DRAWINGS. ADJUST FAN SPEED FOR TOTAL AIR FLOW.
- COMMISSIONING NOT REQUIRED PER WSEC SECTION 408.1. SYSTEMS ARE LESS THAN 180,000 BTU/HR COOLING AND 240,000 BTU/HR HEATING, AND WITH LESS THAN 300 CFM ENERGY-RECOVERY VENTILATION.
- PROVIDE RECORD DRAWING, OWNERS MANUALS, BALANCING REPORT AND COMMISSIONING REPORT TO OWNER AT COMPLETION OF PROJECT. SEE C103.6 OF THE WSEC
- PROVIDE SYSTEMS OPERATIONS TRAINING TO THE BUILDING OWNER PER WSEC PARAGRAPH C103.6.4.

### HVAC LEGEND

SYMBOL	DESCRIPTION	ABBREV.	DESCRIPTION	ABBREV.	DESCRIPTION
— C —	CONDENSATE LINE	AAV	AUTOMATIC AIR VENT ABOVE FINISHED FLOOR	MAX	MAXIMUM THOUSAND BTUH
— RG —	REFRIGERANT GAS	APPROX	APPROXIMATELY	MBH	THOUSAND BTUH
— RL —	REFRIGERANT LIQUID	ARCH	ARCHITECTURAL	MCA	MINIMUM CIRCUIT AMPS
20/12L	DUCT (FIRST FIGURE, SIDE SHOWN)	AUTO	AUTOMATIC	MECH	MECHANICAL
20/12   20/12L	LINED DUCT – DIM. FOR NET FREE AREA EOL = END OF LINING	BLDG	BUILDING	MFR	MANUFACTURER
R (D)	RISE: R OR DROP: D ARROW IN DIRECTION OF FLOW	B.O.D	BOTTOM OF DUCT	MIN	MINIMUM
⊗	DUCT SECTION (SUPPLY)	BTU	BRITISH THERMAL UNIT	NO	NORMALLY OPEN NUMBER
⊙	DUCT SECTION (EXHAUST OR RETURN)	BTUH	BRITISH THERMAL UNIT/HOUR	NO.	NUMBER
⊙ ∅	ROUND DUCT	CAP	CAPACITY	NTS	NOT TO SCALE
M	MOTORIZED DAMPER	CFM	CUBIC FEET PER MINUTE	OA	OUTSIDE AIR
EA	FLEXIBLE CONNECTION	CLG	CEILING	OBD	OPPOSED BLADE DAMPER
FD	FIRE DAMPER COMBINATION FIRE/SMOKE DAMPER	COMP	COMPRESSOR	PD	PRESSURE DROP
FD	FLEXIBLE DUCT	CONN	CONNECTION	PH	PHASE
TV	TURNING VANES	CONT	CONTINUE, CONTINUATION	P.O.C.	POINT OF CONNECTION
SIZE SYMBOL CFM	CEILING OUTLET: WHERE 2 CFM'S SHOWN, LARGER=HIGH SPEED SMALLER = LOW SPEED CFM	COP	COEFFICIENT OF PERFORMANCE	RA	RETURN AIR
SIZE SYMBOL CFM	CEILING INLET	DB	DRY BULB	REF	REFERENCE
SIZE SYMBOL CFM	WALL OUTLET (OR INLET)	DEG F	DEGREE FAHRENHEIT	REQ'D	REQUIRED
T, T <sub>G</sub> , T <sub>A</sub>	THERMOSTAT G = WITH GUARD, A = AVERAGED WITH OTHER	DIA, ∅	DIAMETER	RLA	RATED LOAD AMPS
S	SWITCH	DN	DOWN	RM	ROOM
BP	TIME CLOCK BYPASS	DWG	DRAWING	RPM	REVOLUTIONS PER MINUTE
TT	INTERVAL TIMER	(E)	EXISTING	SA	SUPPLY AIR
TW	THERMAL WELL	EA	EACH	SMACNA	SHEET METAL AND AIR CONDITIONING CONTRACTORS NATIONAL ASSOCIATION
P	PRESSURE TEMPERATURE TEST PORT "PETE'S PLUG"	EAT	ENTERING AIR TEMPERATURE	S.O.	SCREENED OPENING
1 M3	DETAIL IDENTIFICATION NUMBER SHEET ON WHICH DETAIL IS SHOWN	EDB	ENTERING DRY BULB	TD	TRANSFER DUCT
A M3	SECTION IDENTIFICATION LETTER SHEET ON WHICH SECTION IS SHOWN	EER	ENERGY EFFICIENCY RATING	TEMP	TEMPERATURE
		EFF	EFFICIENCY	TG	TRANSFER GRILLE
		ELEC	ELECTRICAL, ELECTRIC	TYP	TYPICAL
		EOL	END OF LINING	U.C.	UNDERCUT DOOR
		ESP	EXTERNAL STATIC PRESSURE	UNO	UNLESS NOTED OTHERWISE
		EWB	ENTERING WET BULB	V	VOLTS, VOLTAGE
		EXH	EXHAUST	VTR	VENT THROUGH ROOF
		EXIST	EXISTING	W	WATT
		FL	FLOOR	W/	WITH
		FLA	FULL LOAD AMPS	WB	WET BULB
		FLEX	FLEXIBLE	WCO	WALL CLEAN OUT
		FFM	FEET PER MINUTE		
		FV	FACE VELOCITY		
		GAL	GALLON		
		GALV.	GALVANIZED		
		HP	HORSE POWER		
		I.E.	INVERT ELEVATION		
		IN	INCH		
		INTEGR.	INTEGRAL		
		KW	KILOWATT		
		LAT	LEAVING AIR TEMPERATURE		
		LDB	LEAVING DRY BULB		
		LWB	LEAVING WET BULB		
		LWT	LEAVING WATER TEMPERATURE		

Approval of submitted plans is not an approval of omissions or oversights by this office or non compliance with any applicable regulations of local government. The contractor is responsible for making sure that the building complies with all applicable codes and regulations of the local government.

The approved construction plans, documents, and all engineering must be posted on the job at all inspections in a visible and readily accessible location.

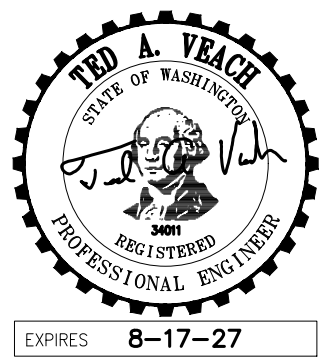
Full sized legible color plans are required to be provided by the permittee on site for inspection.

Separate Electrical Permit is required with the Washington State Department of Labor & Industries. <https://lni.wa.gov/licensing-permits/electrical/electrical-permits-fees-and-inspections> or call for Licensing Information: 1-800-647-0982

### SHEET INDEX

- M-001 – LEGEND & NOTES
- M-002 – SCHEDULES
- M-101 – HVAC PLANS
- M-501 – DETAILS

**VEACH** Consulting Engineers  
12181 C St. S. Tacoma, WA 98444  
Ph: 253-274-5701 Proj# 2608



**CLUCK AND STACK T.I.**  
**SOUTH HILL MALL - STORE #6553**  
**3500 S MERIDIAN ST**  
**PUYALLUP, WA 98373**

DRAWN BY: LRS

4/6/26	REVIEW COMMENTS
3/18/26	ROOFTOP WEIGHT

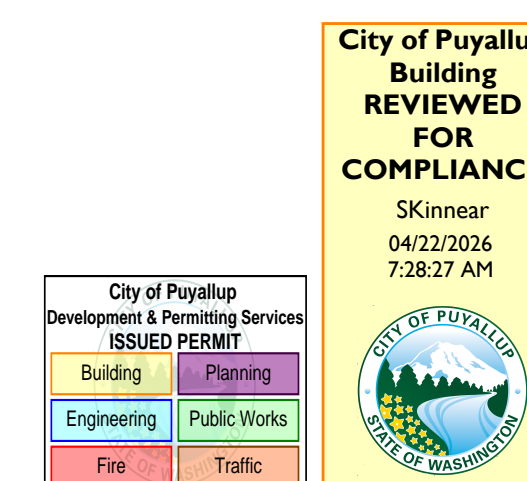
**PRCT120260049**

KEY PLAN

DATE: 12 MARCH 2026

NOTES AND LEGEND

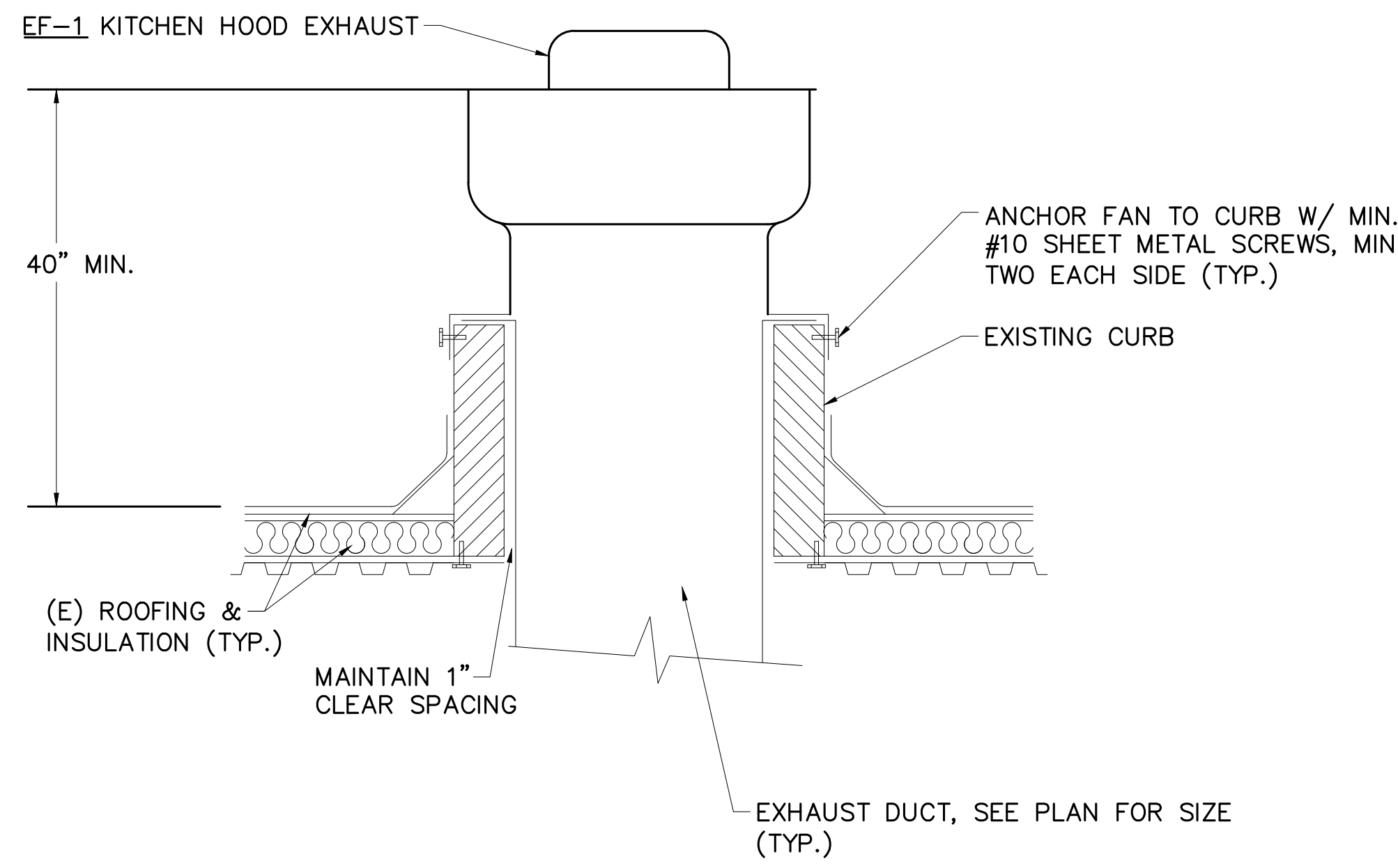
**M-001**



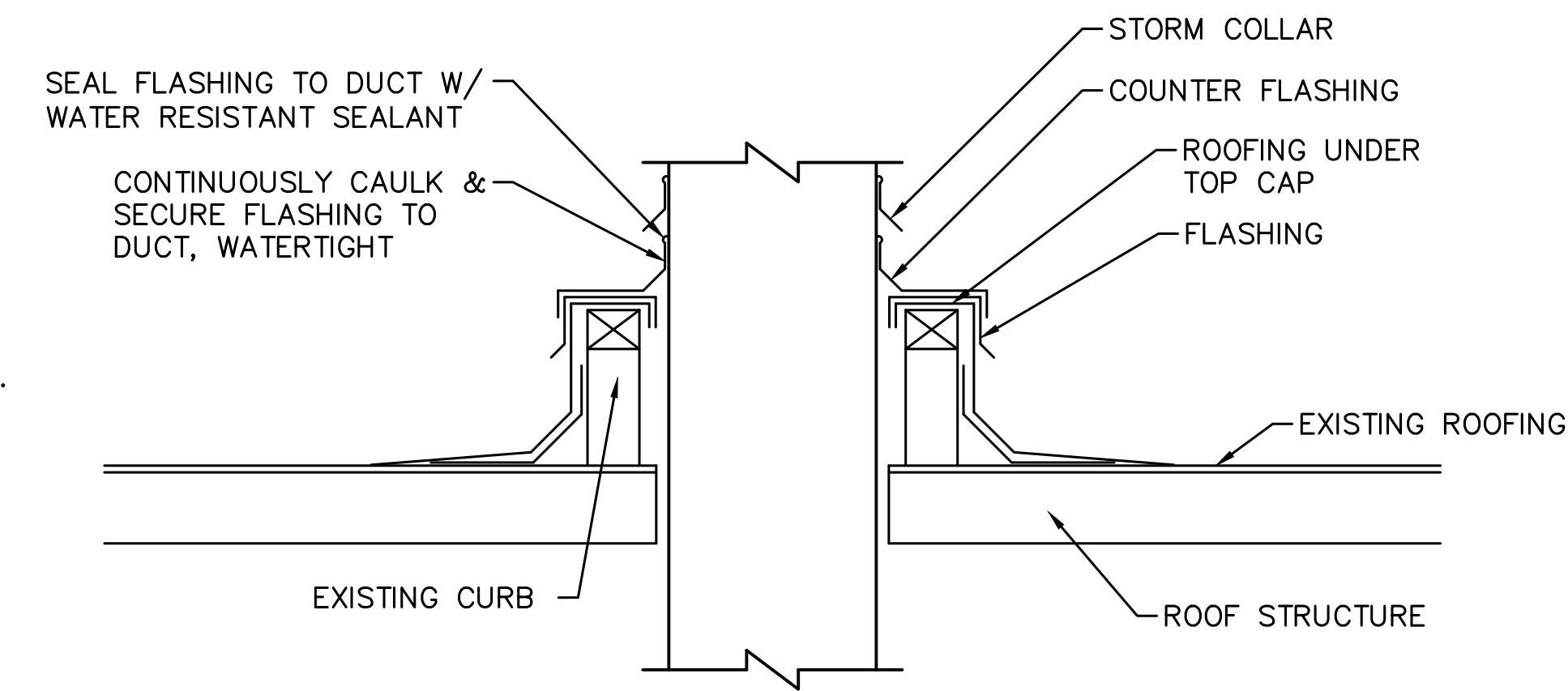
**PERMIT**



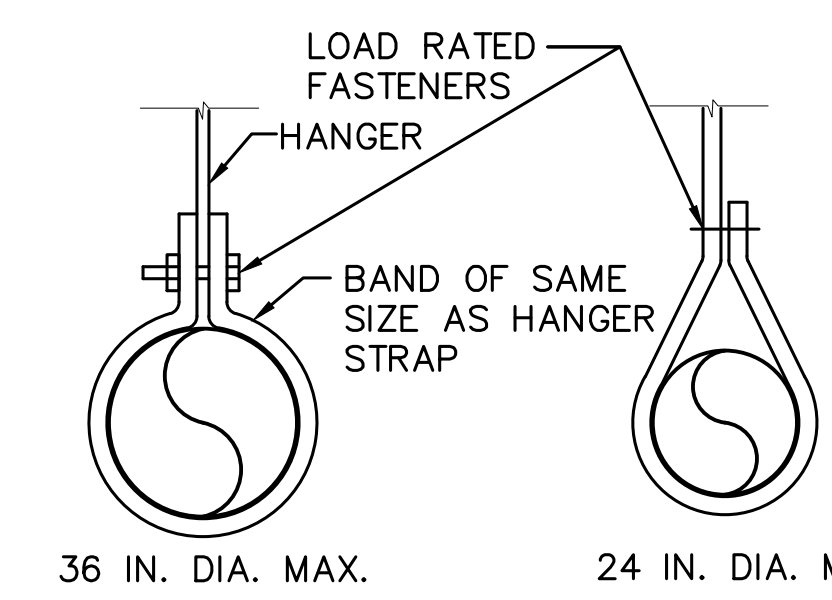




**KITCHEN EXHAUST DETAIL**  
NOT TO SCALE



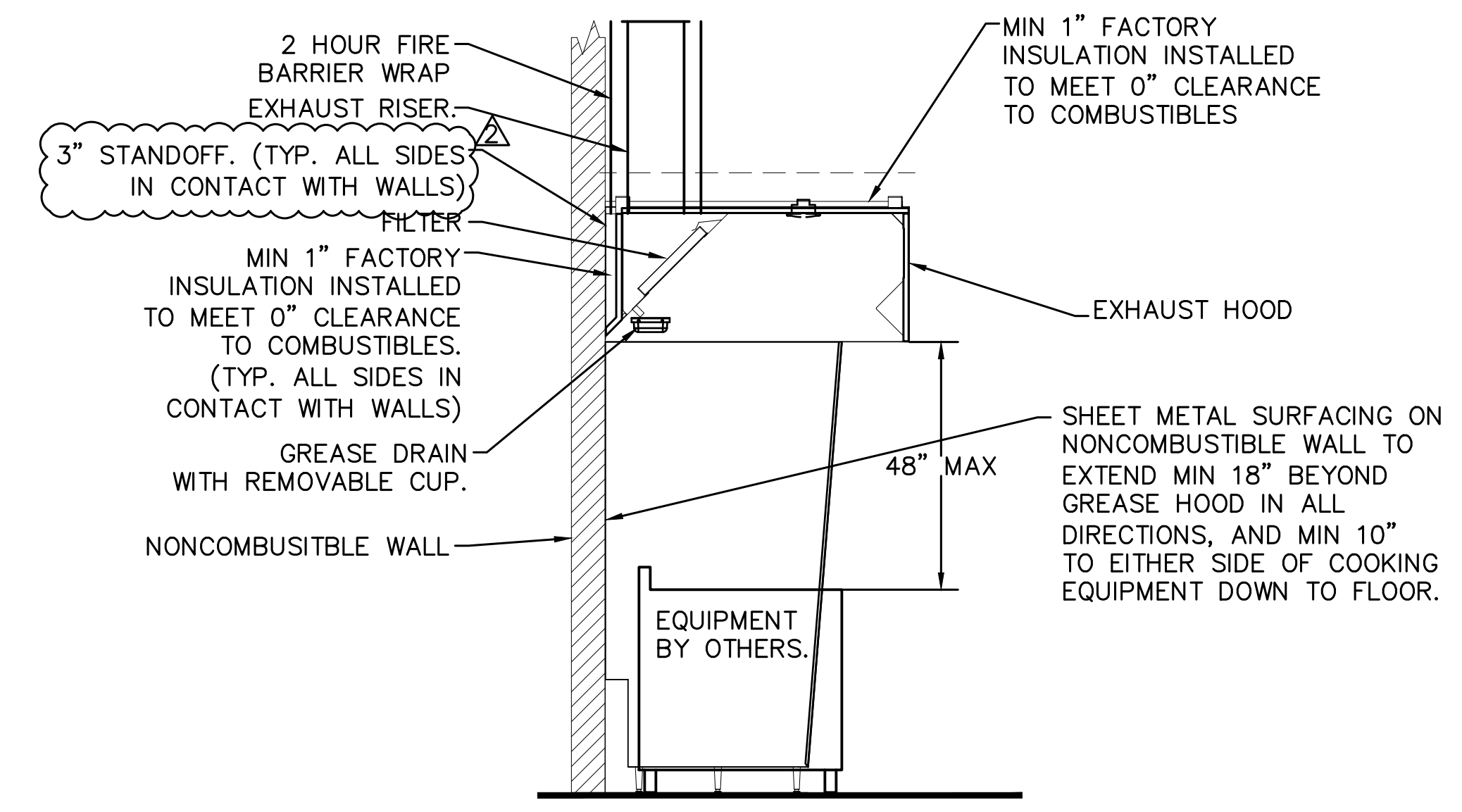
**DUCT THRU ROOF DETAIL**  
NOT TO SCALE



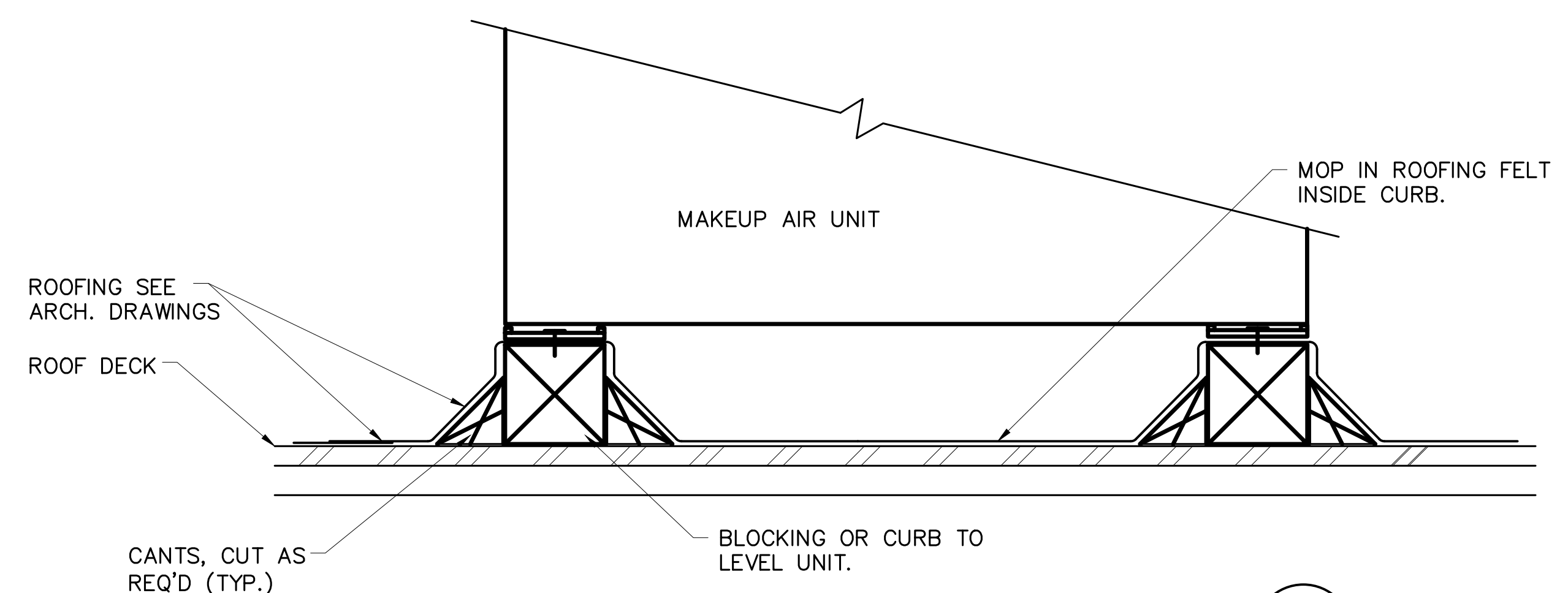
- NOTES:**
1. SIZE HANGER COMPONENTS AND FASTENERS PER SMACNA HVAC DUCT CONSTRUCTION STANDARDS, CHAPTER 5, FOURTH EDITION.
  2. WIRE HANGERS ARE NOT ACCEPTABLE
  3. PROVIDE SHOP DRAWINGS INDICATING TYPES AND LOCATIONS OF DUCT HANGERS.
  4. HANGER ATTACHMENTS TO STRUCTURE SHALL BE OF TYPES AND SIZES ALLOWED BY SMACNA HVAC DUCT CONSTRUCTION STANDARDS, FOURTH EDITION.
  5. SEISMIC BRACING SHALL BE REQUIRED FOR ALL DUCTS THAT ARE SUSPENDED MORE THAN 24" BELOW STRUCTURE. BRACING SHALL MEET THE CURRENT SMACNA SEISMIC RESTRAINT MANUAL GUIDELINES FOR MECHANICAL SYSTEMS.

LARGEST DUCT DIAMETER	SUPPORT ANGLE SIZE	SADDLE SIZE
18" $\phi$	1"x1"x16 GA.	2"x16 GA.
30" $\phi$	1-1/2"x1-1/2"x16 GA.	2"x16 GA.
48" $\phi$	2"x2"x1/8"	3"x10 GA.

**DUCT HANGER ATTACHMENTS**  
NOT TO SCALE



**KITCHEN HOOD DETAIL**  
NOT TO SCALE



**CURB DETAIL**  
NOT TO SCALE



City of Puyallup  
Development & Permitting Services  
ISSUED PERMIT

Building	Planning
Engineering	Public Works
Fire	Traffic

**CLUCK AND STACK T.I.**  
**SOUTH HILL MALL - STORE #6553**  
**3500 S MERIDIAN ST**  
**PUYALLUP, WA 98373**

DRAWN BY: LRS

4/6/26	REVIEW COMMENTS
3/18/26	ROOFTOP WEIGHT

**PRCT120260049**

DATE: 12 MARCH 2026

DETAILS

**M-501**