

DAMPER SCHEDULE & LEGEND

TAG	DESCRIPTION	NOTES	TAG	DESCRIPTION	NOTES
FD-1 (1) 1/2	1 1/2 HOUR DYNAMIC FIRE DAMPER, CURTAIN STYLE, VERTICAL OR HORIZONTAL, 165°F FLUSABLE LINK, BLANK IN AIR STREAM, 4000 FPM UP TO 24X24 VERTICAL, 2000 FPM ALL OTHERS, UL555, GREENHECK RFD-10 TYPE A OR EQUAL.		SD (S)	SMOKE DAMPER, SEE MOTORIZED DAMPER SCHEDULE.	
BDD (BD)	BACKDRIFT DAMPER: GREENHECK WD 330 (VERT) OR WD-100 (HORIZONTAL) OR EQUAL.		MD (M)	MOTORIZED CONTROL DAMPER, SEE MOTORIZED DAMPER SCHEDULE.	
L	VOLUME DAMPER, SHOP FABRICATED, W/LOCKING QUADRANT.		FSD-1 (1) 1/2	1 1/2 HOUR FIRE/SMOKE DAMPER, SEE MOTORIZED DAMPER SCHEDULE.	
RD-1 (RD)	REMOTE OPERATED VOLUME DAMPER, 2000 FPM, UP TO 1" WG, SV ACTUATOR TO R/H1 REMOTE CONNECTION, GREENHECK RBD-10.		FSD-2 (2)	3 HOUR RATED FIRE SMOKE DAMPER, SEE MOTORIZED DAMPER SCHEDULE.	
RD-2 (RD)	REMOTE OPERATED VOLUME DAMPER, 2000 FPM, UP TO 1" WG, SV ACTUATOR TO R/H1 REMOTE CONNECTION, GREENHECK RBD-10.				

MOTORIZED DAMPER SCHEDULE

UNIT NO.	MFR. & MODEL NO.	MOUNTING POSITION	FIRE RATING	LEAKAGE CLASS	ACTUATOR FAIL	VOLT/PH	TYPE	BY	NOTES
SD-EA-1-030	GREENHECK SMD-201	VERT	-	1	CLOSE	120V/1	2 POSITION	EC	1
SD-EA-1-031	GREENHECK SMD-201	VERT	-	1	CLOSE	120V/1	2 POSITION	EC	1
SD-EA-1-032	GREENHECK SMD-201	VERT	-	1	CLOSE	120V/1	2 POSITION	EC	1
NOT USED	-	-	-	-	-	-	-	-	-
SD-EA-1-033	GREENHECK SMD-201	VERT	-	1	CLOSE	120V/1	2 POSITION	EC	1
SD-EA-1-034	GREENHECK SMD-201	VERT	-	1	CLOSE	120V/1	2 POSITION	EC	1
FSD-EA-1-035	GREENHECK FSD-211	VERT	1 1/2	1	CLOSE	120V/1	2 POSITION	EC	1
FSD-EA-1-036	GREENHECK FSD-211	VERT	1 1/2	1	CLOSE	120V/1	2 POSITION	EC	1
MD-EA-1-001	GREENHECK VCD-23	VERT	-	1A	IN-PLACE	24V	2 POSITION	CC	2

NOTES:
 1. LIFE-SAFETY MOTORIZED DAMPER
 - TWO POSITION WITH SPRING RETURN
 - OPEN WHEN BLDG IN NON FIRE ALARM MODE, NORMALLY (SPRING) CLOSED/POWERED OPEN
 - 120V DAMPER ACTUATOR, MODEL BASED ON TORQUE REQ'S FOR DAMPER SIZE & LOCATED EXTERNAL TO DAMPER SLEEVE (UNO)
 - INTERLOCK WITH FIRE ALARM SYSTEM BY FIRE ALARM CONTRACTOR
 - PROVIDED WITH OPEN/CLOSED INDICATOR
 - EMERGENCY POWER REQUIRED.
 - UL 555S LISTED
 - PROVIDED WITH REMOTE RESET LINKAGE (RRL) - COMBINATION FSD ONLY
 - 165°F CLOSURE TEMPERATURE (UNO) - COMBINATION FSD ONLY
 2. MOTORIZED CONTROL DAMPER
 - 24V DAMPER ACTUATOR BY CONTROLS CONTRACTOR, LOCATED EXTERNAL TO DAMPER SLEEVE (UNO)

DIFFUSER/GRILLE SCHEDULE

SYMBOL	MANUFACTURER & MODEL NUMBER	SIZE	TYPE	NOTES
A	TITUS MCD-3	AS NOTED	T-BAR MOUNT MODULAR CORE DIFFUSER	BORDER TYPE 3, WHITE FINISH
B	TITUS MCD-1	AS NOTED	SURFACE MOUNT MOD CORE DIFFUSER	BORDER TYPE 1, WHITE FINISH
C	TITUS 350RL	AS NOTED	SURFACE MOUNT RETEXH GRILLE	BORDER TYPE 1, WHITE FINISH
D	TITUS 50F	AS NOTED	T-BAR LAY-IN EGGRATE (RETURN/EXH)	BORDER TYPE 3, WHITE FINISH
E	HALTON KCD	AS NOTED	T-BAR MOUNT KITCHEN CEILING DIFFUSER	

DUCTWORK SCHEDULE

SERVICE / USAGE	LOCATION	MATERIAL	WORKING PRESSURE (IN. WC)	SMACNA PRESSURE CLASS (IN. WC)	SMACNA SEAL CLASS	NOTES
MEDIUM PRESSURE SUPPLY AIR	BETWEEN AHU AND TERMINAL UNITS	GALV. STEEL	2.5	4	A	1
LOW PRESSURE SUPPLY AIR	FROM TERMINAL FAN COILS UNITS TO GRD'S	GALV. STEEL	1	2	B	1
FLEXIBLE DUCT	CONN TO GRD'S	PREINSUL. FLEX	0.5	RATED "6"-1"	NA	2
RETURN AIR	FROM GRD'S TO AHU & FOU'S	GALV. STEEL	1	2	B	1
TRANSFER AIR	FROM GRD TO GRD	GALV. STEEL	0.05	1	B	1
GENERAL EXHAUST	FROM GRD TO FAN AND AMBIENT	GALV. STEEL	-1	-2	B	1
GREASE EXHAUST	FROM HOOD TO FAN	16 GA WELDED STL	-2	-4	A	4,5
DISHWASHER & POTWASH EXHAUST	FROM HOOD TO FAN	STAINLESS STEEL	-1	-2	A	5,8

DUCTWORK INSULATION SCHEDULE

SERVICE	LOCATION	INSULATION TYPE	THICKNESS	R-VALUE	NOTES
OUTDOOR AIR ≥ 2800 CFM	CONDITIONED SPACE AND UPSTREAM OF AUTOMATIC SHUTOFF DAMPER	WRAP	6"	R-16	9
OUTDOOR AIR ≥ 2800 CFM	CONDITIONED SPACE AND DOWNSTREAM OF AUTOMATIC SHUTOFF DAMPER	WRAP	3"	R-8	9
OUTDOOR AIR ≥ 2800 CFM	CONDITIONED SPACE	WRAP	3"	R-7	9
SUPPLY OR RETURN AIR	OUTSIDE OF THE BUILDING	LINING	2"	R-8	10,11
SUPPLY OR RETURN AIR	UNCONDITIONED SPACE OUTSIDE OF THE CONDITIONED BUILDING ENVELOPE	LINING OR WRAP	2"	R-6	10
SUPPLY OR RETURN AIR	UNCONDITIONED SPACE AND CONVEYING AIR WITHIN 15 DEG F OF SPACE TEMPERATURE (I.E. SUPPLY OR RETURN AIR FLEXING)	WRAP	1"	R-3.3	9
SUPPLY AIR	CONDITIONED SPACE AND CONVEYING AIR LESS THAN 55F OR GREATER THAN 105F	WRAP	1"	R-3.3	9
SUPPLY AIR	CONDITIONED SPACE AND CONVEYING AIR BETWEEN 55F AND 105F	NONE	NONE	NONE	
RETURN, RELIEF OR EXHAUST AIR	CONDITIONED SPACE, DOWNSTREAM OF ENERGY RECOVERY AND UPSTREAM OF AUTOMATIC SHUTOFF DAMPER	WRAP	3"	R-8	9
RETURN, RELIEF OR EXHAUST AIR	CONDITIONED SPACE, DOWNSTREAM OF AUTOMATIC SHUTOFF DAMPER	WRAP	6"	R-16	9
EXHAUST AIR	CONDITIONED SPACE, UPSTREAM OF ENERGY RECOVERY DEVICE OR AUTOMATIC SHUTOFF DAMPER	NONE	NONE	NONE	
EXHAUST AIR	UNCONDITIONED SPACE OUTSIDE OF THE CONDITIONED BUILDING ENVELOPE, UPSTREAM OF ENERGY RECOVERY DEVICE	LINING OR WRAP	2"	R-6	10
EXHAUST AIR	OUTSIDE OF THE BUILDING, UPSTREAM OF ENERGY RECOVERY DEVICE	LINING	2"	R-8	10,11

NOTES:
 1. SHEET METAL GAUGES AND FITTINGS PER SMACNA AND MACDONALD-MILLER DUCT CONSTRUCTION STANDARDS.
 2. THERMAFLEX "GM" OR EQUAL WITH 12 FOOT MAXIMUM LENGTH.
 3. INSTALL PER MFG. GUIDELINES AND INSTRUCTIONS.
 4. UL 300 HOOD TO BE PROVIDED IN KITCHEN BY KITCHEN CONSULTANT. DUCTWORK SPRINKLERS NOT REQUIRED.
 5. SLOPE AT 1/4" PER FOOT BACK TO SOURCE.
 6. SEAMS TO BE CAULKED OR WELDED TO PREVENT CONDENSATION FROM LEAKING THROUGH.
 7. INSULATE ONLY SINGLE WALL METAL DUCT IN ACCESSIBLE LOCATIONS UP TO 7' AFF.
 8. DUCT SYSTEMS GREATER THAN 3" WC SHALL BE LEAK TESTED IN ACCORDANCE WITH W545 C03.10.2.3
 9. WRAP INSULATION WEIGHT = 0.75 PCF
 10. WRAP INSULATION WEIGHT = 1 PCF
 11. INSULATION EXPOSED TO WEATHER SHALL BE PROTECTED FROM DAMAGE INCLUDING THAT DUE TO SUNLIGHT, MOISTURE, EQUIPMENT MAINTENANCE AND WIND, AND SHALL PROVIDE SHIELDING FROM SOLAR RADIATION THAT CAN CAUSE DEGRADATION OF THE MATERIAL.

GENERAL NOTES:
 - INSULATION THICKNESS SHOWN ABOVE IS EQUAL TO TOTAL MINIMUM REQUIRED R-VALUE. ALTERNATE INSULATION WITH EQUAL R-VALUE IS ALLOWED.
 - ALL CONCEALED DUCTWORK TO BE PER MFM'S EXPOSURE 0 (SEALANT, LABELS AND OTHER ITEMS VISIBLE ON OUTSIDE OF DUCTWORK, MAY HAVE SCRATCHES AND MINOR DENTS).
 - ALL INTERIOR EXPOSED DUCTWORK WITHIN OCCUPIED AREAS TO BE PER MFM'S EXPOSURE 1 (NO VISIBLE SEALANT, LABELS, OR WRITING, EXTERIOR WELDS CLEANED AND PAINTED).

PRCT120251049
 REVISION (1) 4/29/2026
 Provide with original plans for reference.

The approved submitted plans is not an approval of omissions or omissions by this office or non compliance with any applicable regulations of local government. The contractor is responsible for making sure that the building complies with all applicable codes and regulations of the local government.

The approved construction plans, documents, and all engineering must be posted on the job at all inspections in a visible and readily accessible location.
 Full sized legible color plans are required to be provided by the permittee on site for inspection.

MECHANICAL GENERAL ABBREVIATIONS

ABBR	FULL NAME	ABBR	FULL NAME	ABBR	FULL NAME
AC	AIR CONDITIONING UNIT	EWT	ENTERING WATER TEMPERATURE	NO	NORMALLY OPEN
AFF	AIR FILTERED FLOOR	FAN	FAN COIL UNIT	NON	NON
AHU	AIR HANDLING UNIT	FD	FIRE DAMPER	NDS	NOT TO SCALE
AL	ALUMINUM	FLO	FULL LOAD AMPS	ORD	OPPOSED BLADE DAMPER
BAS	BUILDING AUTOMATION SYSTEM	FOT	FLAT ON TOP	OD	OUTSIDE DIMENSION
BOD	BACKDRIFT DAMPER	FOT	FLAT ON TOP	POC	POINT OF CONNECTION
BI	BLACK IRON	FSD	FIRE SMOKE DAMPER	PRV	PRESSURE REDUCING VALVE
BOT	BOTTOM OF DUCT	GALV	GALVANIZED	PVC	POLYVINYL CHLORIDE
BOT	BOTTOM	GC	GENERAL CONTRACTOR	REQD	REQUIRED
BTU	BRITISH THERMAL UNITS	GENX	GENERATOR EXHAUST	RIBA	REDUCED PRESSURE BACKFLOW ASSY
BTUH	BRITISH THERMAL UNITS PER HOUR	GLVN	GALVANNEAL	RTU	ROOFTOP UNIT
CAT1	CATEGORY FOUR VENT	GPM	GALLONS PER MINUTE	SA	SHEET METAL
CAT4	CATEGORY FOUR VENT	GREASE	GREASE DUCT	SD	SMOKE DAMPER
CFM	CUBIC FEET PER MINUTE	GWB	GYPSSUM WALL BOARD	SND	SOUND LINED
CFM	CUBIC FEET PER MINUTE	HFP	HORSE POWER, HEAT PUMP	SM	SHEET METAL
CFM	CUBIC FEET PER MINUTE	HVAC	HEATING, VENTILATION AND AIR COND.	SP	STATIC PRESSURE
DB	DUCTBOARD	HX	HEAT EXCHANGER	STL	STAINLESS STEEL
DEMO	DEMOLISH	ID	INSIDE DIMENSION	SUSP	SUSPENDED
DP	DIRECT EXHAUST	LAT	LEAVING AIR TEMPERATURE	T	TYPICAL
DPM	DIFFERENTIAL PRESSURE MONITOR	LBS	POUNDS	TOD	TOP OF DUCT
DPF	DIFFUSER	LWT	LEAVING WATER TEMPERATURE	TV	TURNING VANES
DMR	DAMPEN	MIXED	MIXED AIR TEMPERATURE	TYP	TYPICAL
DN	DOWN	MBH	ONE THOUSAND BTUH	UNO	UNLESS NOTED OTHERWISE
DN	DOWN	MCA	MINIMUM CIRCUIT AMPACITY	UV	ULTRAVIOLET RADIATION
EAT	ENTERING AIR TEMPERATURE	MD	MOTORIZED DAMPER	VAV	VOLUME DAMPER
EGR	EGGCRATE	MN	MINIMUM	VFD	VARIABLE FREQUENCY DRIVE
EEF	ENERGY EFFICIENCY RATIO	MFR	MANUFACTURER	WD	WELDED
EF	EXHAUST FAN	MAC	MACDONALD-MILLER	WI	WITH
ELEV	ELEVATION	MC	NORMALLY CLOSED	WELD	WELDED
ESP	EXTERNAL STATIC PRESSURE	NIC	NOT IN CONTRACT	Ø	VOLTAGE PHASE & DUCT DIAMETER

PIPING SYSTEM ABBREVIATIONS

ABBR	FULL NAME	ABBR	FULL NAME	ABBR	FULL NAME
C	CONDENSATE INDORET DRAIN	GLWR	GLYCOL WATER RETURN	NOV	NATURAL GAS VENT
CA	AIR COMPRESSED	GLWS	GLYCOL WATER SUPPLY	PA	AIR PNEUMATIC
CDWR	CONDENSER WATER RETURN	HHRH	HEATING HOT WATER RETURN	PC	CONFORMANCE
CDWS	CONDENSER WATER SUPPLY	HWWS	HEATING HOT WATER SUPPLY	PCHR	CHILLED WATER (PROCESS) RETURN
CHRV	CHILLER RELIEF VENT	HPC	HEATING HOT WATER PRESSURE	PCHS	CHILLED WATER (PROCESS) SUPPLY
CHWR	CHILLED WATER RETURN	HRS	HEATING HOT WATER SUPPLY	RHS	REFRIGERANT HOT GAS
CHWS	CHILLED WATER SUPPLY	HRR	HEAT RECOVERY RETURN	RLO	REFRIGERANT LOW PRESSURE
CIN/STU	STEAM CLEAN	HRS	HEAT RECOVERY RETURN	RHS	REFRIGERANT HOT GAS
CLR	CLOSED LOOP WATER RETURN	LPC	LOAD PRESSURE CONTROL	SCHR	CHILLED WATER (SECONDARY) RETURN
CLS	CLOSED LOOP WATER SUPPLY	LPS	LOAD PRESSURE CONTROL	SCWS	CHILLED WATER (SECONDARY) SUPPLY
COMB-PVC	AIR COMBUSTION PVC	LPS	LOAD PRESSURE CONTROL	SCV	STEAM CONDENSATE VENT
CRV	CRYO VENT	LTCR	CHILLED WATER (LOW TEMP) RETURN	SV	STEAM VENT
DTWS	DUAL TEMP WATER SUPPLY	MPC	MEDIUM PRESSURE CONTROL	VAC	VACUUM EXHAUST
DTRV	DUAL TEMP WATER RETURN	MPC	MEDIUM PRESSURE CONTROL	VAC	VACUUM EXHAUST
FOC	FUEL OIL SECONDARY CONTAINMENT	MPC	MEDIUM PRESSURE CONTROL	VAC	VACUUM EXHAUST
FOP	FUEL OIL FILL	MJV	MAKEUP WATER	VRF	VRF HIGH PRESSURE
FOR	FUEL OIL RETURN	NC/CONDUT	NATURAL GAS CONDUIT	VRF	VRF HIGH PRESSURE
FOS	FUEL OIL SUPPLY	NGH	NATURAL GAS HIGH PRESSURE	VRF	VRF LOW PRESSURE LIQUID
FOS	FUEL OIL SUPPLY	NGH	NATURAL GAS HIGH PRESSURE	VRF	VRF LOW PRESSURE LIQUID
GENX	GENERATOR EXHAUST	NGH	NATURAL GAS HIGH PRESSURE	VRF	VRF LOW PRESSURE LIQUID
GENX	GENERATOR EXHAUST	NGM	NATURAL GAS MEDIUM PRESSURE	VRF	VRF LOW PRESSURE LIQUID
GENX	GENERATOR EXHAUST	NGM	NATURAL GAS MEDIUM PRESSURE	VRF	VRF LOW PRESSURE LIQUID

HVAC SYSTEM ABBREVIATIONS

ABBR	FULL NAME	ABBR	FULL NAME	ABBR	FULL NAME
COMB-GALV	COMBUSTION AIR SUPPLY AIR LP	EA AL	EXHAUST ALUMINUM	GA	OUTSIDE AIR
SA-KOOL	SUPPLY AIR LP KOOLDUCT	EA SS	EXHAUST ALUMINUM WELDED	RA	RELIEF AIR
SA AL	SUPPLY AIR LP ALUMINUM				

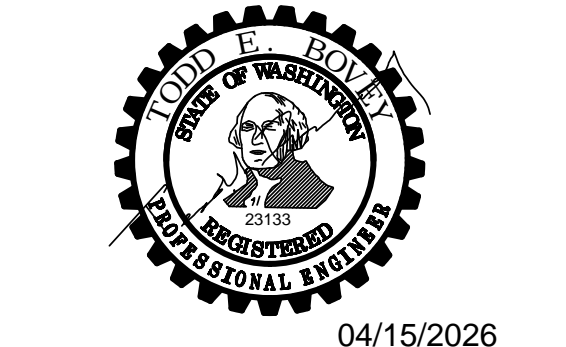
1301 9th Ave
 #2300 Seattle
 WA 98101
 1-2063816000
 www.perkinswill.com

CONSULTANTS

FOOD SERVICE
INMAN FOOD SERVICES
 3807 Charlotte Avenue,
 Nashville, Tennessee 37209
 CINC
AHBL
 1200 6th Ave #1620,
 Seattle, WA 98101
STRUCTURAL
PCS
 1011 Western Avenue, Suite 810
 Seattle, WA 98104
CONTRACTOR
SELLEN
 227 Westlake Ave,
 Seattle, WA 98109

MACDONALD MILLER
 17930 International Blvd,
 Suite 120, SeaTac, WA 98188
MECHANICAL
MACDONALD MILLER
 17930 International Blvd,
 Suite 120, SeaTac, WA 98188
ELECTRICAL
EBD SERVICES
 14900 Interurban Ave S #143
 Seattle, WA 98168
PROJECT MANAGER
TURNER & TOWNSEND
 920 Fifth Avenue,
 Seattle, WA 98104

MacDonald-Miller
FACILITY SOLUTIONS
 17930 Intl. Blvd. Suite, 120 SeaTac, WA 98188
 Phone: 206-763-9400 www.macmiller.com

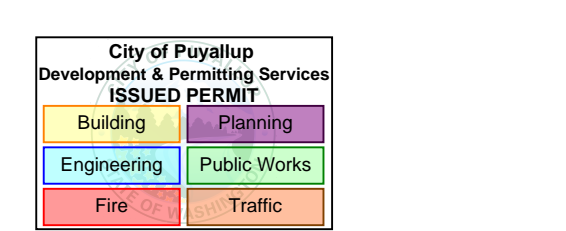


04/15/2026

Multicare
Good Samaritan
Hospital Kitchen
 401 15th Ave SE,
 Puyallup,
 WA 98372

Multicare
Good Samaritan Hospital

MULTICARE



KEY PLAN

ISSUE CHART

NO.	DATE	DESCRIPTION
4	04.24.2026	PHASE 2 REV 1
B	11.20.2025	PERMIT CORRECTIONS
2	11.06.2025	AS101
1	08.06.2025	ISSUE
Job Number		7725-0055

TITLE

SCHEDULES - MECHANICAL

SHEET NUMBER

TMO.02

PIPING GENERAL NOTES

PIPING MATERIAL SCHEDULE			
PIPING	SIZE	MATERIAL	JOINT
HEATING HOT WATER	1/2" - 2"	COPPER TYPE L	LEAD FREE SOLDER, PRESSED MECH JOINT
CHILLED WATER	2-1/2" - 10"	SCH 40 BLK STL, ASTM A53 A OR B	GROOVED, FLANGED, BUTT WELDED
INDIRECT DRAIN	1/2" - 2"	COPPER TYPE L	LEAD FREE SOLDER, PRESSED MECH JOINT
REFRIGERATION	1/8" - 4-1/8"	COPPER TUBE, ACR	BRAZED

PIPING INSULATION SCHEDULE				
PIPING TYPE	PIPE SIZE	INSULATION TYPE	INSULATION THICKNESS	CONDUCTIVITY RANGE
HEATING HOT WATER (105'-140'F)	1/2" - 1-1/4"	FIBERGLASS, ELASTOMERIC FOAM	1"	0.21 - 0.28
HEATING HOT WATER (141'-200'F)	1/2" - 1-1/4"	FIBERGLASS, ELASTOMERIC FOAM	1-1/2"	0.28 - 0.29
CHILLED WATER COOLING (40'-60'F)	1/2" - 1-1/4"	FIBERGLASS, ELASTOMERIC FOAM	1"	0.21 - 0.27
COIL CONDENSATE PIPING	1/2" - 1-1/4"	FIBERGLASS, ELASTOMERIC FOAM	1"	0.21 - 0.27
REFRIGERATION SUCTION	1/8" - 1"	ELASTOMERIC FOAM	1/2" (1" IF LOCATED OUTSIDE BLDG ENV.)	0.21 - 0.27
REFRIGERATION MIXED (DOWNSTREAM OF TXV)	1-1/8" - 7/8"	ELASTOMERIC FOAM	1"	0.21 - 0.27

- ALL PIPING INSULATION AND COVERINGS SHALL HAVE AN ASTM FLAME SPREAD RATING OF 25 OR LESS AND AN ASTM SMOKE DEVELOPED RATING OF 50 OR LESS.
 - ELASTOMERIC INSULATIONS SHALL BE CLOSED CELL.
 - ELASTOMERIC INSULATIONS WHICH MEET THESE RATINGS MAY BE USED AS A SUBSTITUTE FOR FIBERGLASS.
 - PROVIDE A VAPOR BARRIER COVERING ON ALL CHILLED WATER PIPING AND COIL CONDENSATE PIPING INSULATION.
 - PROVIDE A COVERING FOR ALL FIBERGLASS INSULATION WITHIN THE BUILDING.
 - PROVIDE A VINYL JACKET FOR ALL INSULATION EXPOSED TO SIGHT WITHIN THE BUILDING EXCEPT MECHANICAL ROOMS.
 - PROVIDE REMOVABLE LACED INSULATION PAD OVER ALL CONTROL VALVES, WHERE NOT LOCATED WITHIN A MECHANICAL ROOM.
 - AT PIPE HANGERS PROVIDE RIGID INSULATION BETWEEN PIPE AND HANGER.
- THESE PLANS ARE SCHEMATIC AND DO NOT SHOW EXACT ROUTING OR EVERY OFFSET WHICH MAY BE REQUIRED. THE MECHANICAL CONTRACTOR IS TO COORDINATE WITH ALL OTHER TRADES AND IS TO VERIFY ALL CLEARANCES BEFORE COMMENCING WORK.
 - MATERIALS, METHODS, AND INSTALLATION SHALL COMPLY WITH THE PROVISIONS OF THE 2021 INTERNATIONAL BUILDING CODE (IBC), INTERNATIONAL MECHANICAL CODE (IMC), INTERNATIONAL ENERGY CODE (IEC) AND UNIFORM PLUMBING CODE (UPC) AS AMENDED BY THE STATE OF WASHINGTON AND LOCAL AUTHORITIES.
 - ALL PIPE SIZES NOTED ON DRAWINGS ARE MINIMUMS.
 - SLOPE ALL INDIRECT DRAINS AT 2% UNLESS OTHERWISE NOTED ON DRAWINGS. OBTAIN APPROVAL FROM THE CODE AUTHORITY BEFORE INSTALLING PIPING AT LESS THAN 2% (EVEN IF LESSER SLOPE IS INDICATED ON DRAWINGS).
 - HANGERS AND SUPPORTS FOR PIPING SHALL BE IN ACCORDANCE WITH THE 2021 IMC AND IBC AS AMENDED BY THE STATE OF WASHINGTON AND LOCAL AUTHORITIES.
 - PIPING PENETRATIONS OF FIRE RATED WALLS OR FLOORS SHALL BE SLEEVED AND FIRE STOPPED WITH LISTED MATERIALS SO AS TO MAINTAIN THE INTEGRITY AND RATING OF THE FLOOR OR WALL.
 - PROVIDE CHROME PLATE ESCUTCHEON PLATES AT ALL EXPOSED WALL AND CEILING PENETRATIONS.
 - PROVIDE SHUT-OFF VALVES AT ALL EQUIPMENT CONNECTIONS.
 - GROUND, GROOVED OR FLANGED CONNECTION AT EQUIPMENT FOR FUTURE REMOVAL AND SERVICING.
 - FOR CONDENSATE PIPING PROVIDE TRAPS WITH A MINIMUM SEAL 2" GREATER THAN THE FAN OPERATING STATIC PRESSURE AT ALL COOLING COIL CONNECTIONS.
 - PROVIDE MINIMUM 1" AIR BREAK FOR ALL CONDENSATE PIPE TERMINATIONS AT DRAINS.
 - PROVIDE DIELECTRIC CONNECTIONS BETWEEN DISSIMILAR METALS.
 - HEAT TRACING OF PIPING, WHERE INDICATED, SHALL BE PROVIDED AND INSTALLED BY THE MECHANICAL CONTRACTOR. COORDINATE ELECTRICAL SUPPLY FOR HEAT TRACE WITH ELECTRICAL CONTRACTOR.
 - TRENCHING, BACKFILLING AND COMPACTING FOR UNDERGROUND PIPING SHALL BE THE RESPONSIBILITY OF THE MECHANICAL CONTRACTOR UNLESS STATEMENT OTHERWISE IN CONTRACT DOCUMENTS.

DESCRIPTION OF OPERATIONS

- PHASE 1**
MAKEUP AIR UNIT (MAU-2)
 SERVICES: MAKEUP AIR FOR PHASE 1 KITCHEN AREA
 CONTROL TYPE: DDC SYSTEM MONITORING AND INTERLOCK WITH KEF-2
 SETPOINTS: COOLING DAT: 60F (ADJ); HEATING DAT: 72F (ADJ); ROOM TEMPERATURE: 70F (ADJ)
 NOTES: PROVIDES TEMPERATURE CONTROL AND MAKEUP AIR TO PHASE 1 KITCHEN.
 SUMMARY: VARIABLE VOLUME MAKEUP AIR FOR PHASE 1 KITCHEN. TEMPERATURE REGULATION BY INTEGRAL HEAT PUMP AND ELECTRIC BACKUP HEAT. VFD MODULATES FAN BASED ON INPUT FROM DEMAND CONTROL KITCHEN VENTILATION SYSTEM. UNIT WILL MODULATE BETWEEN ITS MINIMUM AND MAXIMUM CFM SETPOINTS IN CONJUNCTION WITH KEF-2. MINIMUM CFM SETPOINT SHALL PROVIDE AT LEAST A 50 PERCENT REDUCTION IN MAKEUP AIR IN ACCORDANCE WITH 2021 WSEC C403.7.1.3.
- KITCHEN EXHAUST FAN (KEF-2)**
 SERVICES: TYPE II GREASE EXHAUST FOR PHASE 1 KITCHEN
 CONTROL TYPE: DDC SYSTEM MONITORING AND INTERLOCK WITH MAU-2
 SUMMARY: VFD MODULATES FAN BASED ON INPUT FROM DEMAND CONTROL KITCHEN VENTILATION SYSTEM. UNIT WILL MODULATE BETWEEN ITS MINIMUM AND MAXIMUM CFM SETPOINTS IN CONJUNCTION WITH MAU-2. MINIMUM CFM SETPOINT SHALL PROVIDE AT LEAST A 50 PERCENT REDUCTION IN EXHAUST AIR IN ACCORDANCE WITH 2021 WSEC C403.7.1.3.
- DISHWASHER EXHAUST FAN (DEF-1)**
 SERVICES: TYPE II POTWASH HOOD AND DISHWASHER
 CONTROL TYPE: DDC SYSTEM MONITORING AND INTERLOCK WITH DISHWASHER
 SUMMARY: FAN RUNS CONTINUOUSLY TO MAINTAIN MINIMUM CFM REQUIRED FOR POT WASH EXHAUST HOOD. UPON SIGNAL FROM DISHWASHER VFD SHALL SPEED UP FAN TO ITS DESIGN CFM SETPOINT TO PROVIDE REQUIRED EXHAUST AT BOTH THE POTWASH HOOD AND DISHWASHER.
- HYDRONIC HEATING COILS (DHC-20 THRU DHC-23)**
 SERVICES: VARIOUS SPACES SERVED FROM THE EXISTING AHU-1 SUPPLY DUCT SYSTEM.
 CONTROL TYPE: DDC
 SPACE TEMPERATURE SETPOINTS: 70F HEATING (ADJ)
 SUMMARY: WHEN SPACE TEMPERATURE FALLS 2% BELOW SETPOINT, THE HOT WATER CONTROL VALVE SHALL MODULATE TO MAINTAIN THE SPACE TEMPERATURE SETPOINT.
- MOTORIZED DAMPER (MD-1)**
 SERVICES: WAREWASH SUPPLY AIR DUCT
 CONTROL TYPE: DDC
 SETPOINTS: MAXIMUM 3900 CFM, MINIMUM 3150 CFM
 SUMMARY: TWO-POSITION MOTORIZED DAMPER. WHEN DAMPER IS FULL OPEN SYSTEM SHALL BE BALANCED TO DESIGN FLOW RATE AS INDICATED ON PLANS. UPON SHUTOFF OF DISHWASHER EXHAUST DAMPER SHALL RESTRICT AIRFLOW TO MINIMUM CFM SETPOINT.

- PHASE 2**
EXISTING MAKEUP AIR UNIT (MAU-1)
 SERVICES: MAKEUP AIR FOR PHASE 2 KITCHEN AREA
 CONTROL TYPE: DDC SYSTEM MONITORING AND INTERLOCK WITH KEF-1
 DISCHARGE AIR TEMPERATURE SETPOINT: HEATING: 60F (ADJ)
 NOTES: EXISTING UNIT TO BE REBALANCED.
 SUMMARY: VARIABLE VOLUME MAKEUP AIR FOR PHASE 2 KITCHEN. HEAT PROVIDED BY HYDRONIC HEATING COIL. VFD MODULATES FAN BASED ON INPUT FROM DEMAND CONTROL KITCHEN VENTILATION SYSTEM. UNIT WILL MODULATE BETWEEN ITS MINIMUM AND MAXIMUM CFM SETPOINTS IN CONJUNCTION WITH KEF-1. MINIMUM CFM SETPOINT SHALL PROVIDE AT LEAST A 50 PERCENT REDUCTION IN MAKEUP AIR IN ACCORDANCE WITH 2021 WSEC C403.7.1.3.

- EXISTING KITCHEN EXHAUST FAN (KEF-1)**
 SERVICES: TYPE II GREASE EXHAUST FOR PHASE 2 KITCHEN
 CONTROL TYPE: DDC SYSTEM MONITORING AND INTERLOCK WITH MAU-1
 NOTES: EXISTING UNIT TO BE REBALANCED.
 SUMMARY: VFD MODULATES FAN BASED ON INPUT FROM DEMAND CONTROL KITCHEN VENTILATION SYSTEM INSTALLED ON NEW PHASE 2 TYPE I HOODS. UNIT WILL MODULATE BETWEEN ITS MINIMUM AND MAXIMUM CFM SETPOINTS IN CONJUNCTION WITH MAU-1. MINIMUM CFM SETPOINT SHALL PROVIDE AT LEAST A 50 PERCENT REDUCTION IN EXHAUST AIR IN ACCORDANCE WITH 2021 WSEC C403.7.1.3.

- GENERAL KITCHEN EXHAUST FAN (EF-4)**
 SERVICES: PHASE 2 KITCHEN AREA
 CONTROL TYPE: DDC SYSTEM MONITORING
 SETPOINT: -0.02 INCHES WATER COLUMN (ADJ)
 NOTES: UNIT MAINTAINS NEGATIVE SPACE PRESSURE.
 SUMMARY: VFD MODULATES FAN TO MAINTAIN NEGATIVE SPACE PRESSURE SETPOINT. IF SETPOINT IS MAINTAINED FOR A PERIOD OF 15 MINUTES AND VFD IS AT MINIMUM SPEED, FAN SHALL TURN OFF. FAN SHALL TURN ON IF SETPOINT IS NOT MAINTAINED FOR A PERIOD OF 15 MINUTES.

- SERIES FAN POWERED TERMINAL UNITS (FTU-101, 102, 103, AND 106)**
 SERVICES: PHASE 2 KITCHEN AND OFFICES
 CONTROL TYPE: DDC
 SPACE TEMPERATURE SETPOINTS: COOLING: 75F (ADJ); HEATING: 70F (ADJ)
 NOTES: FTU-101 THRU FTU-103 ARE EXISTING, FTU-106 IS NEW. UNITS PROVIDE TEMPERATURE CONTROL AND MAKEUP AIR TO PHASE 2 KITCHEN.
 SUMMARY: THE SERIES FAN RUNS CONTINUOUSLY AND THE PRIMARY AIR DAMPER IS MODULATED TO MAINTAIN THE ZONE COOLING SETPOINT. WHEN HEATING CALL EXISTS, THE PRIMARY AIR DAMPER IS SET TO THE MINIMUM POSITION AND THE ELECTRIC HEAT IS CYCLED AS NEEDED TO MAINTAIN THE ZONE HEATING SETPOINT.

ROOM CONDITIONING SCHEDULE																			
ROOM DATA			ASHRAE 170 REQUIREMENTS					DESIGN											
NAME	CODE SIMILAR	FLOOR AREA (SF)	HEIGHT (FT)	ROOM VOLUME (CUFT)	PRESSURE TO ADJACENT SPACE	MIN OUTSIDE ACH	MIN TOTAL ACH	100% EXHAUST	HUMIDITY (%RH)	ROOM TEMP (°F)	PRESSURE TO ADJACENT SPACE	OUTSIDE ACH	MIN OUTSIDE AIR/FLOW (CFM)	TOTAL ACH	SUPPLY AIR (CFM)	RETURN AIR (CFM)	EXHAUST AIR (CFM)	HUMIDITY (%RH)	ROOM TEMP (°F)
PHASE 0 AREAS																			
TEMP LINEN STORAGE	CLEAN LINEN STORAGE	838	7.75	6496	POSITIVE	NR	2	NR	NR	72-78	POSITIVE	2.3	260	2.3	260	0	250	NR	72-78
TEMP DRY STORAGE	FOOD AND SUPPLY STORAGE	1380	7.75	10695	NR	NR	2	NR	NR	72-78	NR	2.1	370	2.1	370	0	370	NR	72-78
LINEN	CLEAN LINEN STORAGE	1109	7.00	7763	POSITIVE	NR	2	NR	NR	72-78	POSITIVE	3.3	425	3.3	425	0	375	NR	72-78
PHASE 1 AREAS																			
DRY STORAGE	FOOD AND SUPPLY STORAGE	976	7.75	7564	NR	NR	2	NR	NR	72-78	NR	4.8	600	4.8	600	0	600	NR	72-78
FREP AREA	FOOD PREPARATION AREAS	474	7.75	3673	NR	2	10	NR	NR	72-78	NR	18.3	1150	18.3	1150	0	1150	NR	72-78
COOK AREA RIGHT	FOOD PREPARATION AREAS	445	7.75	3449	NR	2	10	NR	NR	72-78	NR	27.5	1580	27.5	1580	0	1580	NR	72-78
COOK AREA LEFT	FOOD PREPARATION AREAS	850	7.75	6588	NR	2	10	NR	NR	72-78	NR	22.6	2480	22.6	2480	0	5100	NR	72-78
JANITOR CLOSET	ENVIRONMENTAL SERVICES	72	7.75	558	NEGATIVE	NR	10	YES	NR	NR	NEGATIVE	0.0	0	16.1	0	0	150	NR	NR
WAREWASH	WAREWASH	988	7.75	7657	NEGATIVE	NR	NR	YES	NR	NR	NEGATIVE	30.6	3900	31.7	3900	0	4045	NR	NR
TUBE FEEDING STORAGE	FOOD AND SUPPLY STORAGE	138	7.75	1070	NR	2	NR	NR	NR	72-78	NR	2.8	50	2.8	50	0	0	NR	72-78
EVS BREAKROOM	OFFICE BREAKROOM	1250	7.75	9533	NR	NR	NR	NR	NR	NR	NR	5.5	875	5.5	875	0	870	NR	NR
EVS SUPERVISOR OFFICE	OFFICE	141	7.75	1093	NR	NR	NR	NR	NR	NR	NR	7.7	140	7.7	140	0	140	NR	NR
EVS PRIVATE OFFICE	OFFICE	112	7.75	866	NR	NR	NR	NR	NR	NR	NR	5.2	75	5.2	75	0	75	NR	NR
DIETITIAN OFFICES	OFFICE	363	7.75	2813	NR	NR	NR	NR	NR	NR	NR	4.0	280	4.0	280	0	280	NR	NR
WORKROOM	OFFICE	220	7.75	1706	NR	NR	NR	NR	NR	NR	NR	3.5	100	3.5	100	0	250	NR	NR
NUTRITION MGR OFFICE	OFFICE	164	7.75	1271	NR	NR	NR	NR	NR	NR	NR	4.0	85	4.0	85	0	85	NR	NR
TOUCHDOWN 1111	OFFICE	85	7.75	659	NR	NR	NR	NR	NR	NR	NR	6.8	75	6.8	75	0	0	NR	NR
TOUCHDOWN 1112	OFFICE	85	7.75	659	NR	NR	NR	NR	NR	NR	NR	6.8	75	6.8	75	0	0	NR	NR
PHASE 2 AREAS																			
COOK AREA PODS 1 & 2	FOOD PREPARATION AREAS	966	7.75	7487	NR	2	10	NR	NR	72-78	NR	9.1	1140	30.5	3810	0	3340	NR	72-78
COOK AREA PODS 3 & 4	FOOD PREPARATION AREAS	1060	7.75	8073	NR	2	10	NR	NR	72-78	NR	13.0	1360	18.9	3003	0	3370	NR	72-78
BEVERAGE & HOLDING	FOOD PREPARATION AREAS	421	7.75	3263	NR	2	10	NR	NR	72-78	NR	2.6	140	9.7	525	0	0	NR	72-78
PRODUCTION MGR OFFICE	OFFICE	100	7.75	775	NR	NR	NR	NR	NR	NR	NR	1.5	20	5.8	75	0	0	NR	NR
CHEF OFFICE	OFFICE	120	7.75	930	NR	NR	NR	NR	NR	NR	NR	1.3	20	4.8	75	0	0	NR	NR
LINEN EXPANSION	CLEAN LINEN STORAGE	748	7.00	5236	POSITIVE	NR	2	NR	NR	72-78	POSITIVE	4.3	375	4.3	375	0	325	NR	72-78
EVS STORAGE	ENVIRONMENTAL SERVICES	760	7.00	5320	NEGATIVE	NR	10	YES	NR	NR	NEGATIVE	9.0	800	10.2	800	0	900	NR	NR

- "NR" INDICATES NO REQUIREMENT.
- DOH LICENSED HOSPITALS: ROOM AIRFLOW REQUIREMENTS ARE BASED ON ASHRAE 170:2021 AS ADOPTED BY THE 2022 FGI GUIDELINES.

MAKE-UP AIR UNIT SCHEDULE

UNIT NO.	MFR. & MODEL NO.	NOM TONS	HEAT, MBH	ESP	FAN HP	OA CFM	COP	IEER	ISMRE	VOL/TPH	AUX HTR KW	MCA	WT LBS	NOTES
MAU-1	GREENHECK / MRX-1115-1422	-	250	3540	1	5	3540	-	-	208/3	NONE	-	1500	EXISTING, 1
MAU-2	CAPTIVEAIRE CAS	29	278	8120	3	20	8120	3.5	17.8	8.1	460/3	150	278.8	NEW, 2-7

NOTES:
 1. EXISTING UNIT TO BE REUSED, BALANCE UNIT TO NEW SCHEDULED CFM. UNIT IS EQUIPPED WITH FAN VFD, HYDRONIC HEATING AND COOLING COILS, MERV 8 FILTERS.
 2. POWER WIRING AND DISCONNECT SWITCH BY ELECTRICAL CONTRACTOR.
 3. W/ SINGLE POINT POWER CONNECTION.
 4. MCA LISTED IS TOTAL MCA.
 5. FACTORY CONTROLS. INTEGRATION WITH BMS BY CONTROLS CONTRACTOR.
 6. UNIT SUPPLIED WITH 2" MERV 8 PRE-FILTERS AND 2" MERV 13 FINAL FILTERS.
 7. WEIGHT INCLUDES FACTORY ROOF CURB.

DUCT HEATING COIL SCHEDULE

UNIT NO.	AREA SERVED	MFG & MODEL NO.	AIRFLOW (CFM)	SIZE (W"xH")	EAT (°F)	LAT (°F)	AIR PD (IN WC)	GPM	WATER PD (FT HD)	EWTF	LWTF (F)	NOTES
DHC-20	WAREWASH	RAE	2650	20x10	55	85	0.37	12.5	3.59	160	140	1.2
DHC-21	OFFICE	RAE	290	10x10	55	85	0.04	1.0	0.56	160	140	1.2
DHC-22	OFFICE	RAE	415	10x10	55	85	0.13	1.5	1.16	160	140	1.2
DHC-23	EVS BREAK	RAE	1090	20x10	55	85	0.23	3.5	6.87	160	140	1.2
DHC-24	STORAGE	RAE	600	12x12	55	85	0.14	2.0	2.89	160	140	1.2
DHC-25	HALLWAY	RAE	505	12x10	55	85	0.20	1.5	1.23	160	140	1.2

- IF NO EXISTING 24V POWER IS AVAILABLE, ELECTRICAL CONTRACTOR TO PROVIDE POWER FOR CONTROLS. 24V WIRING BY CONTROLS CONTRACTOR.
- 2-WAY HYDRONIC CONTROL VALVE, WALL THERMOSTAT, SENSORS, AND INTEGRATION WITH THE BMS BY CONTROLS CONTRACTOR.

SERIES VAV BOX SCHEDULE

UNIT NO.</

REFRIGERANT CHARGE LIMIT SCHEDULE

UNIT NO.	LOCATION	REFRIG. TYPE	RCL (LBS./ M CU FT)	EDV (CU FT)	OCC FACTOR	EDVC (LBS.)	TOTAL SYSTEM CHARGE (LBS.)	NOTES
A26	MECHANICAL ROOM 1-E-21.1	R-454A	28	2,882	1	80.7	5.7	1,2,3,4,5,6,7
A23	MECHANICAL ROOM 1-E-21.1	R-454A	28	2,882	1	80.7	5.7	1,2,3,4,5,6,7
A9	MECHANICAL ROOM 1-E-21.1	R-454A	28	2,882	1	80.7	5.7	1,2,3,4,5,6,7
A17	MECHANICAL ROOM 1-E-21.1	R-454A	28	2,882	1	80.7	5.7	1,2,3,4,5,6,7
A20	MECHANICAL ROOM 1-E-21.1	R-454A	28	2,882	1	80.7	5.7	1,2,3,4,5,6,7
D57	MECHANICAL ROOM 1-E-21.1	R-454A	28	2,882	1	80.7	5.7	1,2,3,4,5,6,7

NOTES
 1. UNITS PROVIDED AND INSTALLED BY KEC. REFER TO FOOD SERVICE DRAWINGS FOR ADDITIONAL INFORMATION. UNIT SERVES WALK-IN COOLER OR FREEZER.
 2. CALCULATIONS IN ACCORDANCE WITH THE 2021 WASHINGTON STATE MECHANICAL CODE AND 2019 ASHRAE STANDARDS 15 & 34 INCLUDING ALL ADDENDUMS.
 3. RCL IS REFRIGERANT CONCENTRATION LIMIT FOUND IN 2021 IMC TABLE 1103.1.
 4. EDVC IS THE EFFECTIVE DISPERSAL VOLUME CHARGE AS DEFINED BY 2019 ASHRAE 15 SECTION 7.3.
 5. EDV IS THE EFFECTIVE DISPERSAL VOLUME AS DEFINED BY 2019 ASHRAE 15 7.2.3.
 6. EDV INCLUDES ADJACENT SPACE UTILIZING CONNECTED SPACES VIA NATURAL VENTILATION. TRANSFER AIR OPENING SIZED IN ACCORDANCE WITH 2019 ASHRAE 15 SECTION 7.2.3.2.
 7. ALL AREAS WHERE THE REFRIGERATION SYSTEM WILL BE INSTALLED ARE BUSINESS OCCUPANCIES WITH AN OCCUPANCY FACTOR OF 1.

PROJECT RESPONSIBILITY MATRIX

UNIT NO.	DESCRIPTION	BMS			NON BMS			PROVIDED BY	INSTALLED BY	POWER WIRING BY	CONTROLS WIRING BY	FIRE ALARM WIRING BY	TEST AND BALANCE BY	NOTES	
		S/S	TC	T'START	INTERLOCK	24 HOUR	FIRE/LIFE SAFETY								OTHER
PART A: NEW MECHANICAL EQUIPMENT															
A1	MAKEUP AIR UNITS	X	-	X	X	-	-	13,16	MC	MC	EC	CC	-	MC	3,5,11,47,49
A2	TYPE I GREASE EXHAUST FANS	X	-	-	X	X	-	-	MC	MC	EC	CC	-	MC	3,5,47,49
A3	TYPE II DISHWASHER EXHAUST FANS	-	-	-	X	X	-	16	MC	MC	EC	CC	-	MC	3,5,47,49
A4	GENERAL EXHAUST FANS	X	-	-	X	X	-	16	MC	MC	EC	CC	-	MC	3,5,47,49
A5	HYDRONIC HEATING COILS	-	-	X	-	X	-	-	-	-	-	CC	-	MC	11,47
A6	FAN POWERED VALVS	X	-	X	-	X	-	-	MC	MC	EC	CC	-	MC	3,11,49
A7	WALK-IN COOLER / FREEZER REFRIGERATION EQUIPMENT AND ASSOCIATED PIPING	-	-	X	-	X	-	2	KEC	KEC	EC	KEC	-	KEC	7,11,21,49
A8	TYPE I GREASE EXHAUST HOODS	-	-	-	X	X	X	1	KEC	MC	EC	CC	FAC	MC	8
A9	ANSUL FIRE PROTECTION SYSTEM FOR TYPE I HOODS	-	-	-	X	X	X	6	KEC	KEC	EC	EC	FAC	KEC	-
A10	TYPE II POTWASH HOODS	-	-	-	X	X	-	-	KEC	MC	EC	CC	-	MC	-
PART B: MECHANICAL EQUIPMENT ANCILLARIES															
B1	HVAC EQUIPMENT MOTORS	-	-	-	-	-	-	-	MC	MC	EC	CC	-	MC	-
B2	MAGNETIC MOTOR STARTERS; AUTOMATICALLY CONTROLLED WITH OR WITHOUT HOA SWITCHES	-	-	-	-	-	-	-	EC	EC	EC	CC	-	MC	47
B3	MAGNETIC MOTOR STARTERS; MANUALLY CONTROLLED	-	-	-	-	-	-	-	EC	EC	EC	CC	-	MC	-
B4	MAGNETIC MOTOR STARTERS (FURNISHED W/ MECH. EQUIPMENT)	-	-	-	-	-	-	-	MC	MC	EC	CC	-	MC	-
B5	AIRFLOW PROVING SWITCH AS NEEDED BY EQUIPMENT	-	-	-	-	-	-	-	MC	MC	MC	CC	-	MC	48
B6	DISCONNECT SWITCHES, 120V RECEPTACLES	-	-	-	-	-	-	-	EC	EC	-	-	-	-	-
B7	HYDRONIC VALVES AND DAMPER MOTORS	-	-	-	-	-	-	-	CC	CC	EC	CC	-	MC	16,45
B8	DDC CONTROL SYSTEM (LOW VOLTAGE)	-	-	-	-	-	-	-	CC	CC	EC	CC	-	CC	45
B9	DDC CONTROL PANEL(S)	-	-	-	-	-	-	-	CC	CC	EC	CC	-	CC	45
B10	ROOF CUTTING, PATCHING AND WATERPROOFING	-	-	-	-	-	-	-	GC	GC	-	-	-	-	-
B11	MOTOR SPEED CONTROLS, 120V	-	-	-	-	-	-	-	MC	EC	EC	EC	-	MC	-
B12	DUCT SMOKE DETECTORS (ACTIVATION OF LOCAL SMOKE DAMPERS)	-	-	-	-	-	-	-	EC	MC	EC	FAC	-	FAC	50
B13	AREA SMOKE DETECTORS	-	-	-	-	-	-	-	EC	EC	EC	EC	-	EC	-
B14	FIRE DAMPERS	-	-	-	-	-	-	-	MC	MC	-	-	-	MC	17
B15	DUCT SMOKE DETECTORS (SHUTDOWN OF MECHANICAL EQUIPMENT OVER 2000 CFM)	-	-	-	-	-	-	X	EC	MC	EC	FAC	-	FAC	17
B16	COMBINATION FIRE/SMOKE DAMPERS AND SMOKE DAMPERS	-	-	-	-	-	-	X	MC	MC	EC	FAC	-	FAC	17
B17	EQUIPMENT CRANE PICKS	-	-	-	-	-	-	-	GC	-	-	-	-	-	23
B18	SLEEPERS FOR MECHANICAL EQUIPMENT	-	-	-	-	-	-	-	GC	GC / MC	-	-	-	-	-
B19	SHEETMETAL ACCESS DOORS IN MECHANICAL EQUIPMENT AND DUCTS	-	-	-	-	-	-	-	MC	MC	-	-	-	-	-
B20	ARCHITECTURAL ACCESS DOORS/PANELS FOR MECHANICAL EQUIPMENT ACCESS	-	-	-	-	-	-	-	GC	GC	-	-	-	-	17
B21	SHEETMETAL FLASHING CAPS OVER CURBS AND SLEEPERS	-	-	-	-	-	-	-	GC	GC	-	-	-	-	24
B22	FLASHING AND COUNTERFLASHING AROUND MECHANICAL UNITS	-	-	-	-	-	-	-	GC	GC	-	-	-	-	24
B23	CONCEALING ENCLOSURES AROUND MECH. EQUIPMENT	-	-	-	-	-	-	-	GC	GC	-	-	-	-	17,5,38
B24	BOLLARDS FOR PROTECTION OF MECHANICAL EQUIPMENT	-	-	-	-	-	-	-	GC	GC	-	-	-	-	25
B25	PIPE SLEEVES	-	-	-	-	-	-	-	MC	MC	-	-	-	-	26,27
B26	FIRE SAFING AROUND MECHANICAL EQUIPMENT; PIPING, DUCTWORK, ETC.	-	-	-	-	-	-	-	MC	MC	-	-	-	-	-
B27	CAULKING FOR WEATHER PROTECTION AROUND EXTERIOR MECHANICAL DEVICES (LOUVERS, PIPE AND DUCT PENETRATIONS, ETC.)	-	-	-	-	-	-	-	GC	GC	-	-	-	-	28,40
B28	FLOOR DRAINS	-	-	-	-	-	-	-	MC	MC	-	-	-	MC	30,29
B29	FIRE-RATED DUCT ENCLOSURES	-	-	-	-	-	-	-	GC	GC	-	-	-	-	17,38
B30	WALL/CEILING SOUND MITIGATION	-	-	-	-	-	-	-	GC	GC	-	-	-	-	49
B31	FALL PROTECTION	-	-	-	-	-	-	-	GC	GC	-	-	-	-	-
Part D: DEMOLITION															
D1	CUT CAP AND MAKE SAFE OF EXISTING MECHANICAL EQUIPMENT AND ASSOCIATED UTILITIES	-	-	-	-	-	-	-	MC	MC	EC	CC	FAC	-	-
D2	CUT CAP AND MAKE SAFE OF EXISTING WALK-IN COOLER / FREEZER EQUIPMENT AND ASSOCIATED UTILITIES	-	-	-	-	-	-	-	KEC	KEC	EC	CC	FAC	-	-
ABBREVIATIONS:															
AF	ABOVE FINISHED FLOOR	GC	GENERAL CONTRACTOR & OTHER TRADES			TC	TIME CLOCK								
CC	CONTROL CONTRACTOR	MC	MECHANICAL CONTRACTOR			VAV	VARIABLE AIR								
EC	ELECTRICAL CONTRACTOR	KEC	KITCHEN EQUIPMENT CONTRACTOR			VFD	VARIABLE FREQUENCY DRIVE								
FAC	FIRE ALARM CONTRACTOR	S/S	START/STOP			BMS	BUILDING MANAGEMENT SYSTEM								
NOTES:															
1.	HOODS ARE CONTROLLED BY HALTON DEMAND CONTROL KITCHEN VENTILATION (DCKV) SYSTEM. HARDWIRE INTERLOCK FROM DCKV CONTROLLER TO KITCHEN EXHAUST FAN VFD. DCKV CONTROLLER MONITORED BY BMS WHICH SENDS SIGNALS TO THE MAKEUP AIR UNIT.														
2.	UNITS CONTROLLED VIA LINE VOLTAGE THERMOSTAT LOCATED IN WALK-INS. SYSTEM REQUIRES MONITORING ONLY FROM BMS.														
3.	EC TO PROVIDE MAGNETIC MOTOR STARTERS FOR START/STOP OPERATION OF EQUIPMENT AND PROVIDE SERVICE DISCONNECT SWITCH WHEN REQUIRED. INTERLOCKING RELAYS PROVIDED BY CC.														
4.	EQUIPMENT SLEEPERS PROVIDED AND INSTALLED BY GC. SHEETMETAL SLEEPER CAPS PROVIDED AND INSTALLED BY MC.														
5.	GC TO ALTER CONSTRUCTION TO MEET CODE REQUIRED CLEARANCES AND DIRECT OTHER TRADES TO MEET INSTALLATION REQUIREMENTS.														
6.	LINE-VOLTAGE THERMOSTAT SET TO 80 F. INSTALL THERMOSTAT 48" AFF.														
7.	EC TO PROVIDE POWER AND SERVICE DISCONNECT SWITCH WHEN REQUIRED.														
8.	KEC TO PROVIDE DEMAND CONTROL KITCHEN VENTILATION SYSTEM FOR CONTROL OF HOODS, GREASE EXHAUST FANS, AND MAKEUP AIR UNITS.														
9.	PART OF THE SMOKE CONTROL SYSTEM. EMERGENCY POWER REQUIRED.														
10.	SMOKE DAMPER FOR FAN SYSTEM TO BE POWERED CLOSED, FAIL OPEN ON LOSS OF POWER. SEE SMOKE CONTROL FAN PRESSURE SWITCH.														
11.	THERMOSTAT. INSTALL 7-DAY PROGRAMMABLE THERMOSTAT 48" AFF.														
12.	PROVIDED WITH AN INTERNAL FACTORY INSTALLED THERMOSTAT.														
13.	THERMOSTAT SUPPLIED BY EQUIPMENT SUPPLIER. EC TO PROVIDE POWER CONNECTION TO UNIT WITH SERVICE DISCONNECT SWITCH. MC TO COORDINATE LOCATIONS AND POWER REQUIREMENTS TO EC.														
14.	SUPPLIER ASSEMBLED CONTROL PACKAGE. EC TO SET PANEL & FAN VFD, PROVIDE SERVICE DISCONNECT SWITCHES AND POWER WIRING AS REQUIRED. EC TO INTERLOCK VIBRATION SAFETY SWITCH TO SHUTDOWN VFD. EC TO POWER WIRE SUMP HEATER AND CONTACTOR. EC TO WIRE WATER LEVEL FLOAT SENSOR TO DRAIN SOLENOID AT WATER TREATMENT STATION.														
15.	EC TO FURNISH AND INSTALL BOILER POWER WIRING AND EMERGENCY SHUTDOWN SWITCHES. WIRING OF BOILER CONTROLS BY CC.														
16.	ALL EXHAUST AND INTAKE DAMPERED OPENINGS INTO THE BUILDING SHALL BE POWERED CLOSED DURING BUILDING UNOCCUPIED HOURS, UNLESS 24/7 OPERATION.														
17.	MC TO COORDINATE LOCATIONS OF ACCESS DOORS. GC TO FURNISH AND INSTALL ACCESS DEVICES.														
18.	SERVICE AND MAINTENANCE OUTLETS FOR POWER TOOLS.														
19.	MC TO PROVIDE THERMOSTAT, CONTACTOR AND/OR RELAY. EC TO PROVIDE POWER AND HEAT TRACE CABLE. MC TO COORDINATE LOCATIONS AND POWER REQUIREMENTS.														
20.	DAY TANK SUPPLIED BY EC.														
21.	REFRIGERANT PIPING PROVIDED AND INSTALLED BY KEC. MC TO PROVIDE AND INSTALL CONDENSATE PIPING FROM INDOOR EVAPORATOR COIL TO DRAIN.														
22.	MC TO COORDINATE LOCATION WITH GC. EC TO PROVIDE METHODS/MATERIALS SPECIFICATIONS.														
23.	GC TO PROVIDE STANDARD WORKING HOURS FOR CRANE PICKS. MC TO COORDINATE WEIGHTS OF MECHANICAL EQUIPMENT TO GC. GC TO PROVIDE SCHEDULE FOR PICKS, CHANGES MUST BE IN WRITING NO LESS THEN 24 HOURS PRIOR TO PICK.														
24.	ROOFING AND FLASHING BY GC.														
25.	POSITIONING SUGGESTED BY MC. FINAL INSTALLATION BY GC.														
26.	POSITIONING SUGGESTED BY MC. INSTALLATION IN SLABS BY MC. REVIEW BY GC TO CONFIRM LAYOUT WITH MC.														
27.	SLEEVES THROUGH STRUCTURAL BEAMS COORDINATED BY MC BUT FURNISHED BY GC.														
28.	SEE LOUVER INSTALLATIONS.														
29.	MC TO COORDINATE LOCATION, TOP OF DRAIN ELEVATION AND MEMBRANES IF REQUIRED WITH GC. SLOPE TO DRAIN BY GC.														
30.	MC TO COORDINATE LOCATION, ELEVATION AND OTHER FIXTURE REQUIREMENTS WITH GC.														
31.	MC TO PROVIDE AND INSTALL. STRUCTURAL DESIGN AND REVIEW BY GC AND GC'S STRUCTURAL ENGINEER AT NO COST TO MC.														
32.	PIPE TRENCHING AND IMPORT/EXPORT OF SOILS IS BY GC.														
33.	PIPE BEDDING MATERIAL AND PIPE BEDDING IS BY MC. CLOSURE OF TRENCH BY GC.														
34.	PIPE PENETRATION AND SEAL BY MC.														
35.	BOOT AND DRAIN SUPPLIED BY GC. MC CONNECTS TO BOOT AND ROUTES TO FOUNDATION DRAINS AS INDICATED ON THE CIVIL DRAWINGS. FOUNDATION DRAINS BY GC.														
36.	THE MC SHALL COORDINATE EQUIPMENT ACCESS WALKWAYS AND WALK-ON MATS SERVING THE AC EQUIPMENT WITH THE GC. FINAL STRUCTURAL DESIGN OF THE WALKWAYS SHALL BE BY THE STRUCTURAL ENGINEER AND THE ARCHITECT. THE CONSTRUCTION OF THE WALKWAYS SHALL BE BY THE GC AS INDICATED ON THE ARCHITECTURAL AND MECHANICAL DRAWINGS AND AS REQUIRED BY THE MANUFACTURER.														
37.	SHAFTS AND HORIZONTAL ENCLOSURES USED FOR RETURN AIR, EXHAUST AIR, OR ARE PART OF THE SMOKE CONTROL SYSTEM SHALL BE CONSTRUCTED AIRTIGHT. SHAFTS SHALL BE CONSTRUCTED TO WITHSTAND NEGATIVE OR POSITIVE PRESSURE OF 10 PSF.														
38.	THE MC SHALL COORDINATE DUCT ENCLOSURE REQUIREMENTS WITH THE GC.														
39.	TOILET ROOM ACCESSORIES SUCH AS GRAB BARS, TOILET PAPER DISPENSERS, SEAT GUARD DISPENSERS, ETC., SHALL BE FURNISHED BY THE GC. SUPPORTS FOR ACCESSORIES AND PARTITIONS SHALL BE INSTALLED BY THE GC. INSTALLATION LOCATIONS SHALL BE COORDINATED WITH THE ARCHITECT AND AS REQUIRED BY CODES AND ADA STANDARDS. INVENTORY, RECEIPT AND DELIVERY TO DESTINATION/ROOMS BY GC.														
40.	WEATHERPROOFING AND WATERPROOFING BY GC.														
41.	UTILITY PIPING PENETRATING THE BUILDING TO WITHIN 5 FEET PERPENDICULAR FROM THE BUILDING BY MC. MC TO COORDINATE LOCATIONS AND ELEVATIONS WITH GC.														
42.	CC TO SIZE AND INSTALL THE ACTUATOR. VERIFY CONTROL OPTIONS WITH DAMPER USE.														
43.	GC TO PROVIDE J-BOLTS, REBAR, IMBED PLATES, IMBED BOLTS, ETC. AS REQUIRED FOR CURB AND PAD CONSTRUCTION. MC SHALL PROVIDE DIMENSIONAL REQUIREMENTS TO GC.														
44.	GC SHALL CONSTRUCT CONCRETE FORMING AND FRAMING AS REQUIRED TO SUPPORT MECHANICAL EQUIPMENT. MC SHALL COORDINATE SIZES AND LOCATIONS WITH GC.														
45.	GC SHALL COORDINATE LOCATION AND SIZE OF TRANSFORMER WITH EC.														
46.	SEE ALSO SMOKE CONTROL/PRESSURIZATION PLAN.														
47.	EC SHALL PROVIDE AND INSTALL CONTROL VOLTAGE TRANSFORMER WITH ANY REQUIRED STARTERS.														
48.	SWITCHES PROVIDED WITH EQUIPMENT BY EQUIPMENT SUPPLIER.														
49.	MECHANICAL EQUIPMENT NOISE ASSESSMENT TO BE PROVIDED BY PROJECT ACCOUSTITION. ALL EQUIPMENT ISOLATION AND OTHER DUCT/PIPING MITIGATION BY MC. ALL ROOM MITIGATION BY G.C.														
50.	FAC TO COORDINATE LOCATION AND ACCESS. GC TO FURNISH AND INSTALL ACCESS DEVICES.														

1301 5th Ave
 #2300, Seattle
 WA 98101
 1-12063876000
 www.perkinswill.com

CONSULTANTS

FOOD SERVICE
INMAN FOOD SERVICES
 3807 Charlotte Avenue,
 Nashville, Tennessee 37209
 csw

ABHL
 1200 6th Ave #1620,
 Seattle, WA 98101

STRUCTURAL
PCS
 1011 Western Avenue, Suite 810
 Seattle, WA 98104

CONTRACTOR
SELLEN
 227 Westlake Ave,
 Seattle, WA 98109

PLUMBING
MACDONALD MILLER
 17930 International Blvd,
 Suite 120, SeaTac, WA 98158

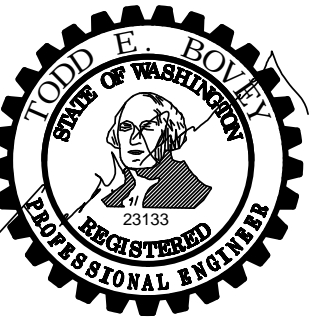
MECHANICAL
MACDONALD MILLER
 17930 International Blvd,
 Suite 120, SeaTac, WA 98188

ELECTRICAL
EBD SERVICES
 14900 International Ave S #143
 Seattle, WA 98168

PROJECT MANAGER
TURNER & TOWNSEND
 920 Fifth Avenue,
 Seattle, WA 98104



MacDonald-Miller
 FACILITY SOLUTIONS
 17930 Intl. Blvd., Suite, 120 SeaTac, WA 98188
 Phone: 206-763-9400 www.macmiller.com



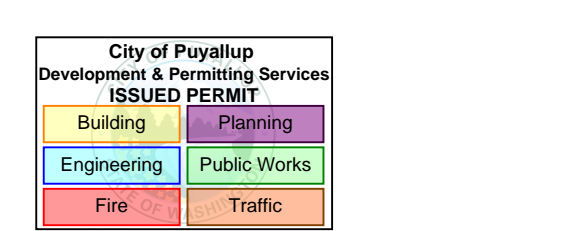
04/15/2026

PHASE 2 REV 1 04.24.2026

MultiCare
Good Samaritan
Hospital Kitchen
 401 15th Ave SE,
 Puyallup,
 WA 98372

MultiCare
Good Samaritan Hospital

MULTICARE



KEY PLAN

ISSUE CHART

4	PHASE 2 REV 1	04.24.2026
ISSUE	SSUE	DATE
Job Number	7725-4055	
TITLE		

SCHEDULES - MECHANICAL

SHEET NUMBER

TM0.03

SHEET NOTES

- DRAWINGS RELY ON ACCURACY OF EXISTING AS-BUILT INFORMATION AND MAY NOT SHOW FULL SCOPE OF DEMOLITION REQUIRED. FIELD TO CONTACT ENGINEER WITH ANY DISCREPANCIES.
- COORDINATE ALL REQUIRED HVAC SHUTDOWNS WITH OWNER AND G.C.

Perkins&Will

1301 5th Ave
 #2300, Seattle, WA 98101
 T+1-206-381-6000
 www.perkinswill.com

CONSULTANTS

FOOD SERVICE

INMAN FOOD SERVICES
 3807 Charlotte Avenue,
 Nashville, Tennessee 37209

CIVIL

AHBL
 1200 5th Ave #1620,
 Seattle, WA 98101

STRUCTURAL

PCS
 1011 Western Avenue, Suite 810
 Seattle, WA 98104

CONTRACTOR

SELLEN
 227 Westlake Ave,
 Seattle, WA 98109

PLUMBING

MACDONALD MILLER
 17930 International Blvd,
 Suite 120, SeaTac, WA 98158

MECHANICAL

MACDONALD MILLER
 17930 International Blvd,
 Suite 120, SeaTac, WA 98188

ELECTRICAL

EBD SERVICES
 14900 Interurban Ave S #143
 Seattle, WA 98158

PROJECT MANAGER

TURNER & TOWNSEND
 920 Fifth Avenue,
 Seattle, WA 98104

MacDonald-Miller
FACILITY SOLUTIONS
 17930 Intl. Blvd. Suite. 120 SeaTac, WA 98188
 Phone: 206-763-9400 www.macmiller.com



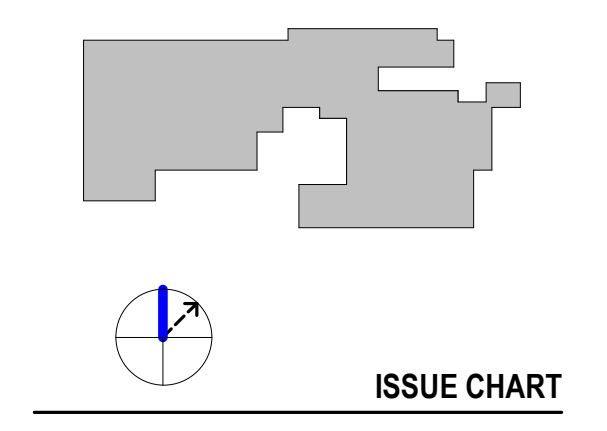
MultiCare
Good Samaritan
Hospital Kitchen
 401 15th Ave SE,
 Puyallup,
 WA 98372

MultiCare
Good Samaritan Hospital
MULTICARE

City of Puyallup
 Development & Permitting Services
 9500 D PLYMOUTH

Building	Planning
Engineering	Public Works
Fire	Traffic

KEY PLAN

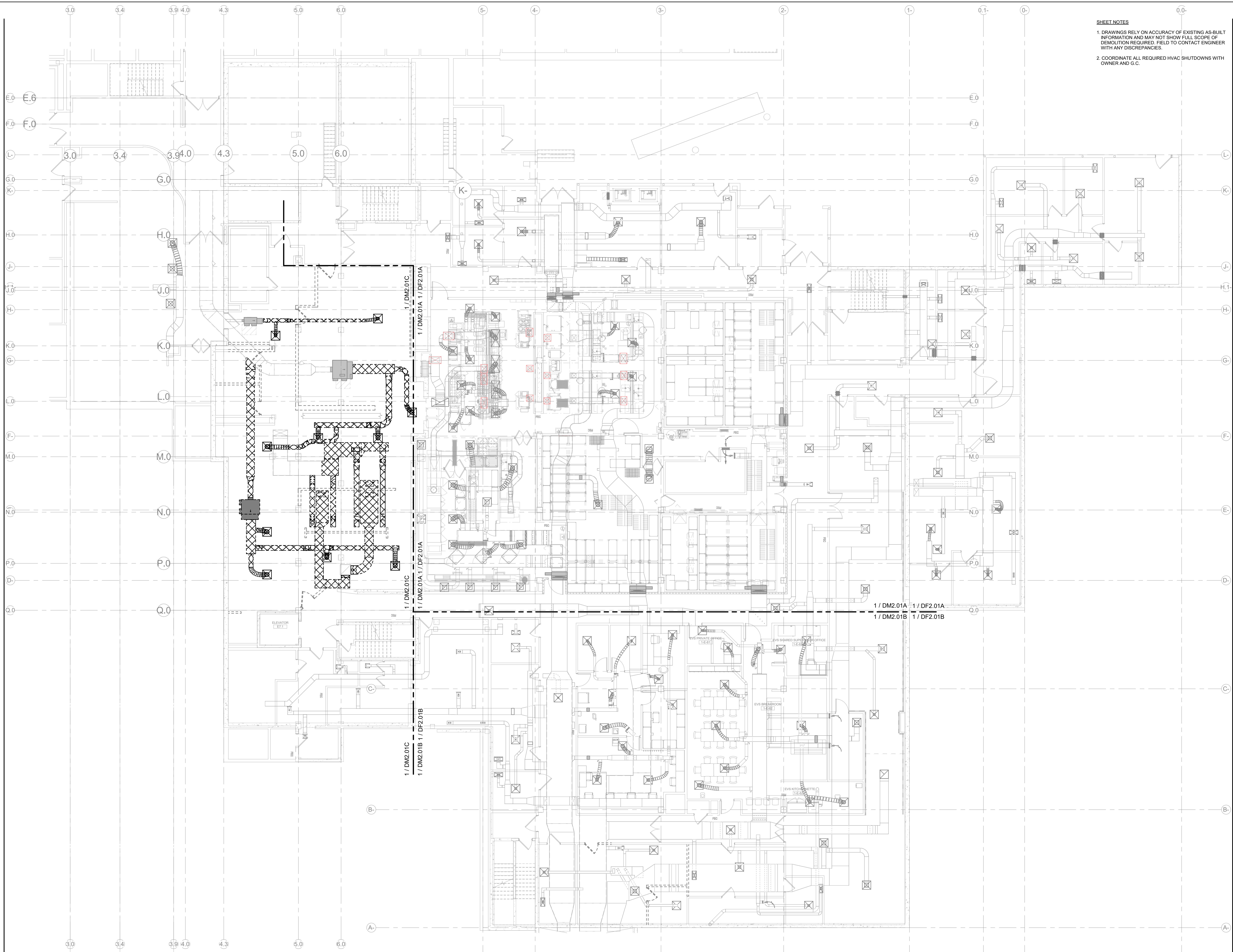


A	PERMIT CORRECTIONS	07.11.2025
ISSUE	ISSUE	
Job Number	7725-4055	TITLE

LEVEL 01 OVERALL
DEMOLITION FLOOR
PLAN - MECHANICAL

SHEET NUMBER

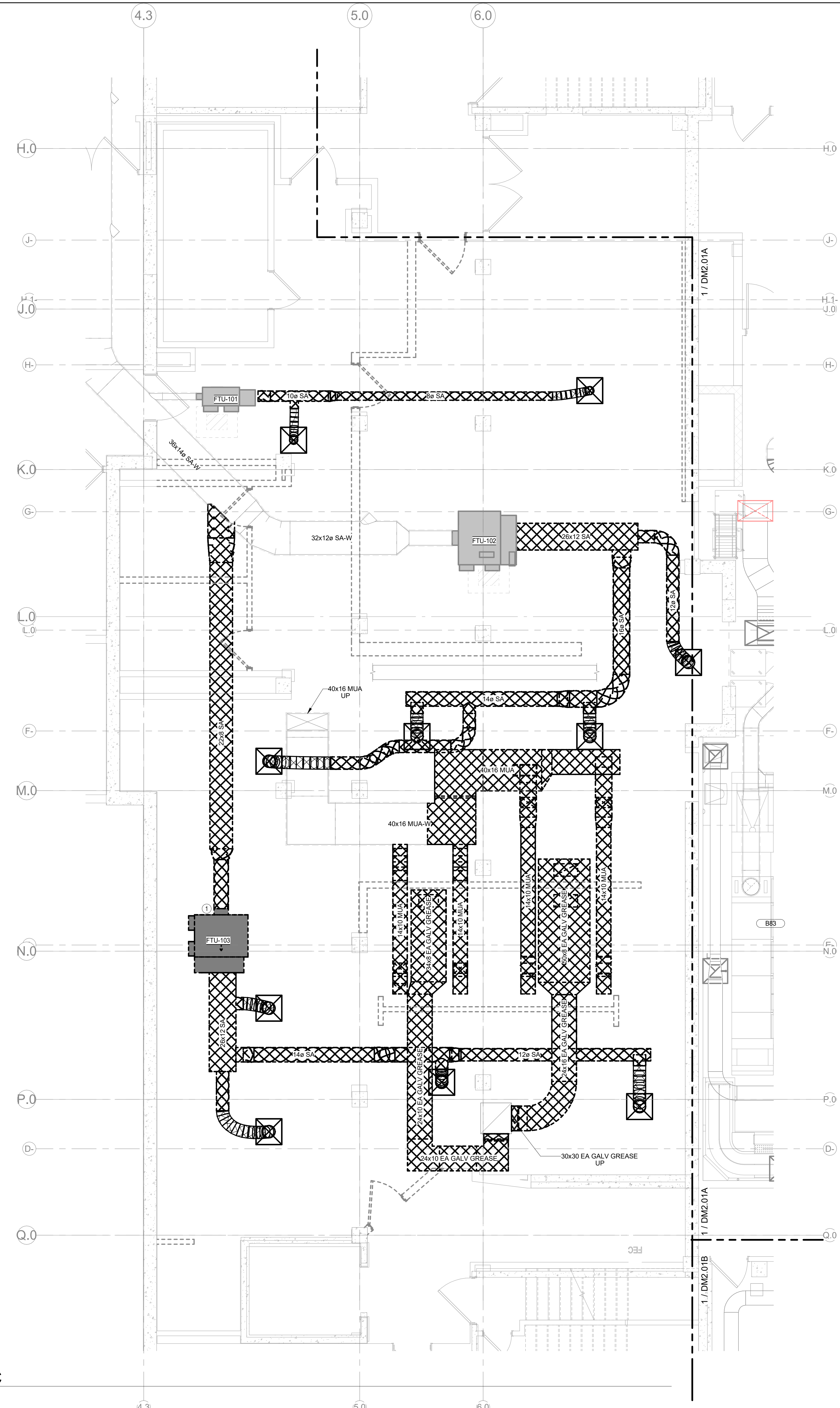
DM2.01



1 LEVEL 01 - SHEETMETAL - DEMO - PHASE 2
 SCALE: 1/8" = 1'-0"

4/24/2026 11:27:56 AM Autodesk Docs\MultiCare - Good Samaritan Hospital Kitchen Expansion\MECH\MultiCare\Kitchen\PC-14

PHASE 2 REV 1 04.24.2026



SHEET NOTES

- DRAWINGS RELY ON ACCURACY OF EXISTING AS-BUILT INFORMATION AND MAY NOT SHOW FULL SCOPE OF DEMOLITION REQUIRED. FIELD TO CONTACT ENGINEER WITH ANY DISCREPANCIES.
- COORDINATE ALL REQUIRED HVAC SHUTDOWNS WITH OWNER AND G.C.

Perkins&Will

1301 5th Ave
 #2300, Seattle, WA 98101
 T: 206.381.6000
 www.perkinswill.com

CONSULTANTS

FOOD SERVICE

INMAN FOOD SERVICES
 3807 Charlotte Avenue,
 Nashville, Tennessee 37209

AHBL
 1200 6th Ave #1620,
 Seattle, WA 98101

STRUCTURAL

PCS
 1011 Western Avenue, Suite 810
 Seattle, WA 98104

CONTRACTOR

SELLEN
 227 Westlake Ave,
 Seattle, WA 98109

PLUMBING

MACDONALD MILLER
 17930 International Blvd,
 Suite 120, SeaTac, WA 98188

MECHANICAL

MACDONALD MILLER
 17930 International Blvd,
 Suite 120, SeaTac, WA 98188

ELECTRICAL

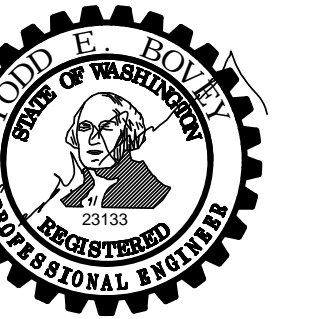
EBD SERVICES
 14900 International Ave S #143
 Seattle, WA 98168

PROJECT MANAGER

TURNER & TOWNSEND
 920 Fifth Avenue,
 Seattle, WA 98104



MacDonald-Miller
FACILITY SOLUTIONS
 17930 Intl. Blvd, Suite, 120 SeaTac, WA 98188
 Phone: 206-763-9400 www.macmiller.com

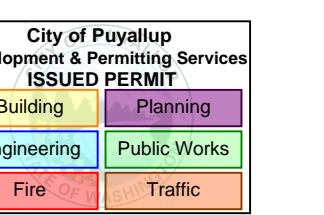


04/15/2026

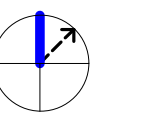
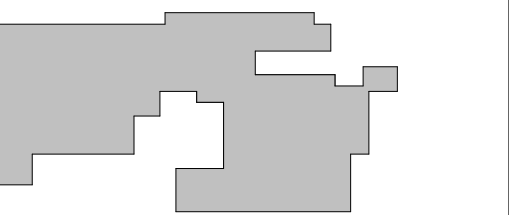
MultiCare
Good Samaritan
Hospital Kitchen
 401 15th Ave SE,
 Puyallup,
 WA 98372



MULTICARE



KEY PLAN



ISSUE CHART

NO.	DESCRIPTION	DATE
A	PERMIT CORRECTIONS	07.11.2025
B	ISSUE	07.11.2025
C	ISSUE	07.11.2025
D	ISSUE	07.11.2025
E	ISSUE	07.11.2025
F	ISSUE	07.11.2025
G	ISSUE	07.11.2025
H	ISSUE	07.11.2025
I	ISSUE	07.11.2025
J	ISSUE	07.11.2025
K	ISSUE	07.11.2025
L	ISSUE	07.11.2025
M	ISSUE	07.11.2025
N	ISSUE	07.11.2025
O	ISSUE	07.11.2025
P	ISSUE	07.11.2025
Q	ISSUE	07.11.2025
R	ISSUE	07.11.2025
S	ISSUE	07.11.2025
T	ISSUE	07.11.2025
U	ISSUE	07.11.2025
V	ISSUE	07.11.2025
W	ISSUE	07.11.2025
X	ISSUE	07.11.2025
Y	ISSUE	07.11.2025
Z	ISSUE	07.11.2025

TITLE
LEVEL 01 DEMOLITION
FLOOR PLAN - PHASE 2
AREA C - MECHANICAL

SHEET NUMBER
DM2.01C

1 LEVEL 01 - SHEETMETAL - DEMO - AREA C
 SCALE: 1/4" = 1'-0"

4/24/2026 11:28:01 AM Autodesk Docs\MultiCare - Good Samaritan Hospital Kitchen Expansion\MECH\MultiCare\Kitchen\FE5.rvt



- SHEET NOTES**
1. ALL PHASE 2 MECHANICAL SCOPE OF WORK IS INSIDE OF SINGLE SMOKE COMPARTMENT. NO NEW DUCT PENETRATIONS OF RATED WALLS REQUIRED.
- FIRE & SMOKE RATING LEGEND**
- EXISTING 1HR FIRE BARRIER
 - EXISTING 2HR FIRE BARRIER
 - NEW 1HR RATED FIRE BARRIER
 - NEW 2HR RATED FIRE BARRIER
 - EXISTING 1HR RATED SMOKE BARRIER
 - EXISTING SMOKE PARTITION
 - NEW 1HR RATED SMOKE BARRIER
 - NEW SMOKE PARTITION

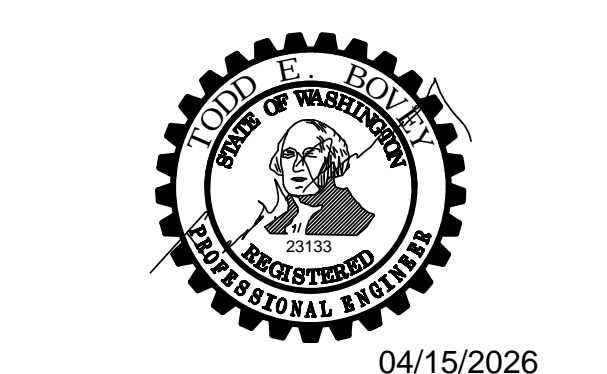
Perkins&Will

1301 5th Ave
#2300, Seattle, WA 98101
1-206338-6000
www.perkinswill.com

CONSULTANTS

- FOOD SERVICE**
- INMAN FOOD SERVICES**
3807 Charlotte Avenue,
Nashville, Tennessee 37209
- AHBL**
1200 5th Ave #1620,
Seattle, WA 98101
- STRUCTURAL**
- PCS**
1011 Western Avenue, Suite 810
Seattle, WA 98104
- CONTRACTOR**
- SELLEN**
227 Westlake Ave,
Seattle, WA 98109
- PLUMBING**
- MACDONALD MILLER**
17930 International Blvd,
Suite 120, SeaTac, WA 98188
- Mechanical**
- MACDONALD MILLER**
17930 International Blvd,
Suite 120, SeaTac, WA 98188
- ELECTRICAL**
- EBD SERVICES**
14900 Interurban Ave S #143
Seattle, WA 98188
- PROJECT MANAGER**
- TURNER & TOWNSEND**
920 Fifth Avenue,
Seattle, WA 98104

MacDonald-Miller
FACILITY SOLUTIONS
17930 Intl. Blvd. Suite. 120 SeaTac, WA 98188
Phone: 206-763-9400 www.macmiller.com



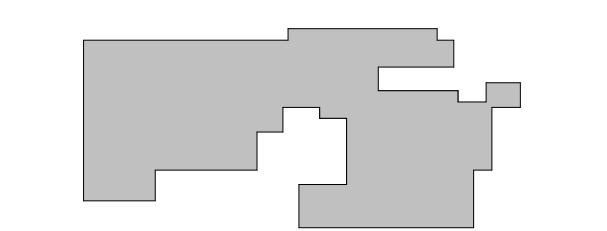
MultiCare
Good Samaritan
Hospital Kitchen
401 15th Ave SE,
Puyallup, WA 98372

MultiCare
Good Samaritan Hospital
MULTICARE

City of Puyallup
Development & Permitting Services
ISSUED PERMIT

Building Planning
Engineering Public Works
Fire Traffic

KEY PLAN



ISSUE CHART

NO.	DESCRIPTION	DATE
A	PERMIT CORRECTIONS	07.11.2025
ISSUE	ISSUE	
Job Number		7725-4055

TITLE

LEVEL 01 OVERALL FLOOR PLAN - MECHANICAL

SHEET NUMBER

TM2.01

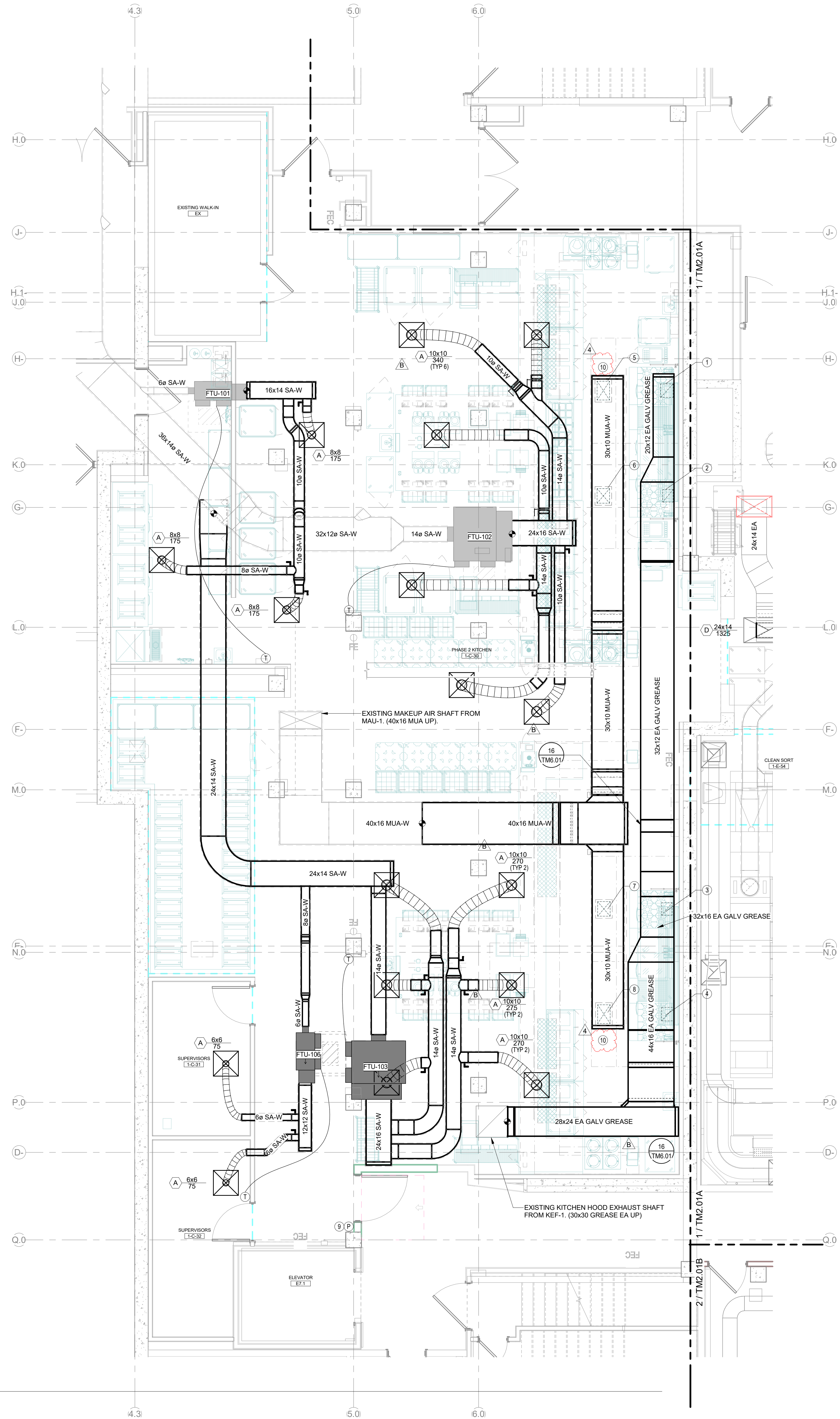
1 LEVEL 01 - SHEETMETAL - PHASE 2
SCALE: 1/8" = 1'-0"

4/24/2026 11:28:15 AM Autodesk Docs\MultiCare - Good Samaritan Hospital Kitchen Expansion\MECH\MultiCare\Kitchen\PE2-01

PHASE 2 REV 1 04.24.2026

4/24/2026 11:28:22 AM Autodesk Docs\MultiCare - Good Samaritan Hospital Kitchen Expansion\MECH\MultiCare\Kitchen\PE5-4

1 LEVEL 01 - SHEETMETAL - AREA C
SCALE: 1/4" = 1'-0"



- SHEET NOTES**
- GREASE EXHAUST DUCT ACCESS PANELS SHALL BE PROVIDED IN ACCORDANCE WITH SECTION 506.3.8 AND 506.3.9 OF THE 2021 WASHINGTON STATE MECHANICAL CODE. ACCESS PANELS SHALL BE:
 - LOCATED NOT MORE THAN 10 FEET FROM CHANGES IN DIRECTION GREATER THAN 45 DEGREES.
 - LOCATED ON THE SIDE OR TOP OF THE DUCT, NOT ON THE BOTTOM.
 - HAVE DIMENSIONS OF AT LEAST 12 INCHES BY 12 INCHES.
- SHEET NOTES**
- RELOCATE EXISTING THERMOSTATS AS SHOWN FOR TERMINAL UNITS FTU-101, 102 AND 103.
- KEY NOTES**
- 13x12 EA DN TO HOOD. BALANCE TO 1936 CFM.
 - 12x10 EA DN TO HOOD. BALANCE TO 1404 CFM.
 - 12x10 EA DN TO HOOD. BALANCE TO 1431 CFM.
 - 13x12 EA DN TO HOOD. BALANCE TO 1936 CFM.
 - 18x12 MUA DN TO HOOD. BALANCE TO 885 CFM.
 - 14x12 MUA DN TO HOOD. BALANCE TO 885 CFM.
 - 18x12 MUA DN TO HOOD. BALANCE TO 885 CFM.
 - ROOM PRESSURE SENSOR FOR CONTROL OF EF-4 VFD.
 - FIELD TO INSULATE ENTIRE PERFORATED SUPPLY PLENUM. 1" INSULATION INTENDED TO PREVENT CONDENSATION ACCUMULATION.

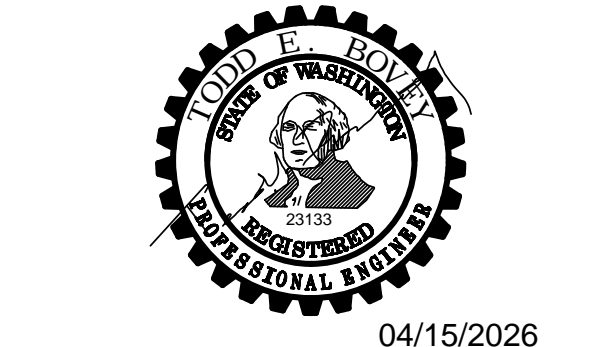
Perkins&Will

1301 5th Ave
#2300, Seattle, WA 98101
1-2063816000
www.perkinswill.com

CONSULTANTS

- FOOD SERVICE**
- INMAN FOOD SERVICES**
3807 Charlotte Avenue,
Nashville, Tennessee 37209
- CIVIL**
- AHBL**
1200 6th Ave #1620,
Seattle, WA 98101
- STRUCTURAL**
- PCS**
1011 Western Avenue, Suite 810
Seattle, WA 98104
- CONTRACTOR**
- SELLEN**
227 Westlake Ave,
Seattle, WA 98109
- PLUMBING**
- MACDONALD MILLER**
17930 International Blvd,
Suite 120, SeaTac, WA 98158
- MECHANICAL**
- MACDONALD MILLER**
17930 International Blvd,
Suite 120, SeaTac, WA 98188
- ELECTRICAL**
- EBD SERVICES**
14900 Interurban Ave S #143
Seattle, WA 98168
- PROJECT MANAGER**
- TURNER & TOWNSEND**
920 Fifth Avenue,
Seattle, WA 98104

MacDonald-Miller
FACILITY SOLUTIONS
17930 Intl. Blvd, Suite, 120 SeaTac, WA 98188
Phone: 206-763-9400 www.macmiller.com



04/15/2026

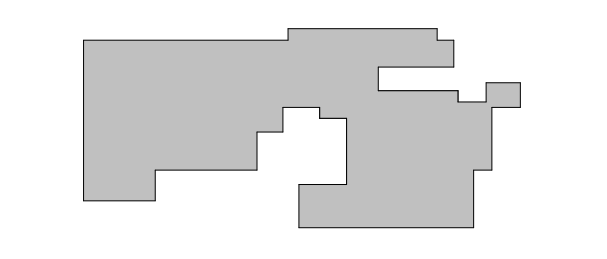
MultiCare
Good Samaritan
Hospital Kitchen
401 15th Ave SE,
Puyallup,
WA 98372

MultiCare
Good Samaritan Hospital
MULTICARE

City of Puyallup
Development & Permitting Services
ISSUED PERMITS

Building	Planning
Engineering	Public Works
Fire	Traffic

KEY PLAN



ISSUE CHART

4	PHASE 2 REV 1	04/24/2026
B	PERMIT CORRECTIONS	11/20/2025
2	ASI 01	11/06/2025
A	PERMIT CORRECTIONS	07/11/2025
ISSUE	ISSUE	DATE
Job Number	7725-4055	TITLE

LEVEL 01 FLOOR PLAN - PHASE 2 AREA C - MECHANICAL

SHEET NUMBER
TM2.01C

SHEET NOTES

1. EXISTING KITCHEN EQUIPMENT MAU-1 AND KEF-1 ARE TO BE REUSED ALONG WITH EXISTING DUCTWORK AND SHAFTS.

A. GC TO CONFIRM EXISTING SHAFTS ARE SUITABLE FOR REUSE. SHAFTS FOUND TO BE IN POOR CONDITION MUST BE REPAIRED TO MAINTAIN REQUIRED FIRE RATING.

B. GC TO CONFIRM EXISTING DUCTWORK IS SUITABLE FOR REUSE. DUCTS FOUND TO BE IN POOR CONDITION MUST BE REPAIRED OR REPLACED TO MAINTAIN PRESSURE CLASS AND MINIMIZE LEAKAGE.

Perkins&Will

1301 5th Ave
 #2300, Seattle
 WA 98101
 1-2063381600
 www.perkinswill.com

CONSULTANTS

FOOD SERVICE

INMAN FOOD SERVICES
 3807 Charlotte Avenue,
 Nashville, Tennessee 37209
 CNL

AHBL
 1200 6th Ave #1620,
 Seattle, WA 98101

STRUCTURAL

PCS
 1011 Western Avenue, Suite 810
 Seattle, WA 98104

CONTRACTOR

SELLEN
 227 Westlake Ave,
 Seattle, WA 98109

PLUMBING

MACDONALD MILLER
 17930 International Blvd,
 Suite 120, SeaTac, WA 98188

MECHANICAL

MACDONALD MILLER
 17930 International Blvd,
 Suite 120, SeaTac, WA 98188

ELECTRICAL

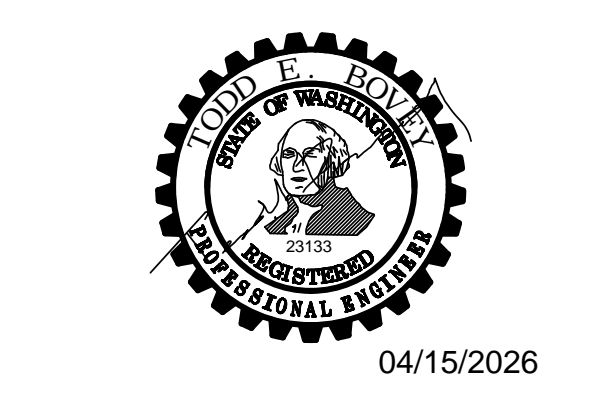
EBD SERVICES
 14900 Interurban Ave S #143
 Seattle, WA 98168

PROJECT MANAGER

TURNER & TOWNSEND
 920 Fifth Avenue,
 Seattle, WA, 98104

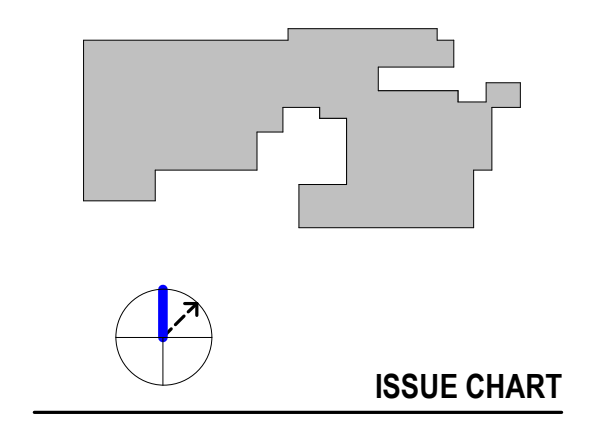
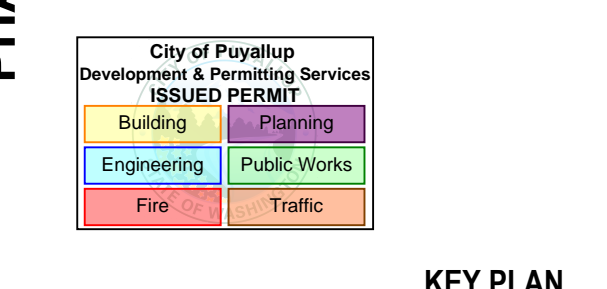
MM

MacDonald-Miller
FACILITY SOLUTIONS
 17930 Intl. Blvd, Suite, 120 SeaTac, WA 98188
 Phone: 206-763-9400 www.macmiller.com



MultiCare
Good Samaritan
Hospital Kitchen
 401 15th Ave SE,
 Puyallup,
 WA 98372

MultiCare
Good Samaritan Hospital

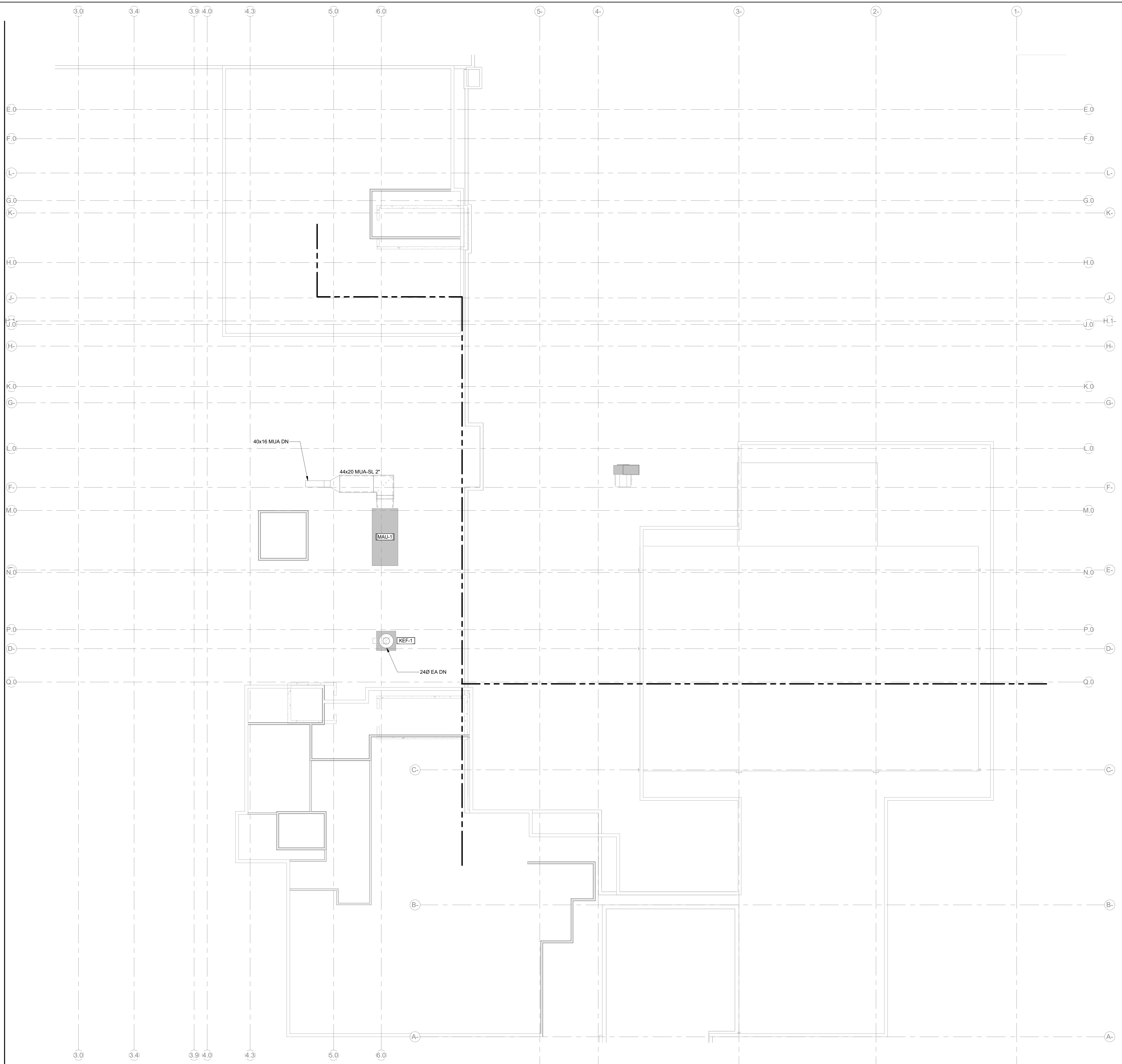


A	PERMIT CORRECTIONS	07.11.2025
ISSUE	ISSUE	DATE
Job Number	7725-4055	TITLE

**LEVEL 05 FLOOR PLAN -
 PHASE 2 - MECHANICAL**

SHEET NUMBER

TM2.05



1 LEVEL 05 - SHEETMETAL - PHASE 2
 SCALE: 1/8" = 1'-0"

4/24/2026 11:29:26 AM Autodesk Docs\\MultiCare - Good Samaritan Hospital Expansion\\MECH\\MultiCare\\Kitchen\\R25.rvt

SHEET NOTES

- 1. EXISTING KITCHEN EQUIPMENT MAU-1 AND KEF-1 ARE TO BE REUSED ALONG WITH EXISTING DUCTWORK AND SHAFTS.
- A. GC TO CONFIRM EXISTING SHAFTS ARE SUITABLE FOR REUSE. SHAFTS FOUND TO BE IN POOR CONDITION MUST BE REPAIRED TO MAINTAIN REQUIRED FIRE RATING.
- B. GC TO CONFIRM EXISTING DUCTWORK IS SUITABLE FOR REUSE. DUCTS FOUND TO BE IN POOR CONDITION MUST BE REPAIRED OR REPLACED TO MAINTAIN PRESSURE CLASS AND MINIMIZE LEAKAGE.

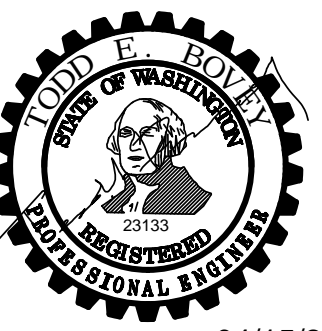
1301 5th Ave
#2300, Seattle
WA 98101
1-12063816000
www.perkinswill.com

CONSULTANTS

- FOOD SERVICE**
- INMAN FOOD SERVICES**
3807 Charlotte Avenue,
Nashville, Tennessee 37209
- CIVIL**
- AHBL**
1200 6th Ave #1620,
Seattle, WA 98101
- STRUCTURAL**
- PCS**
1011 Western Avenue, Suite 810
Seattle, WA 98104
- CONTRACTOR**
- SELLEN**
227 Westlake Ave,
Seattle, WA 98109
- PLUMBING**
- MACDONALD MILLER**
17930 International Blvd,
Suite 120, SeaTac, WA 98158
- MECHANICAL**
- MACDONALD MILLER**
17930 International Blvd,
Suite 120, SeaTac, WA 98188
- ELECTRICAL**
- EBD SERVICES**
14900 International Ave S #143
Seattle, WA 98168
- PROJECT MANAGER**
- TURNER & TOWNSEND**
920 5th Avenue,
Seattle, WA, 98104



MacDonald-Miller
FACILITY SOLUTIONS
17930 Intl. Blvd, Suite, 120 SeaTac, WA 98188
Phone: 206-763-9400 www.macmiller.com

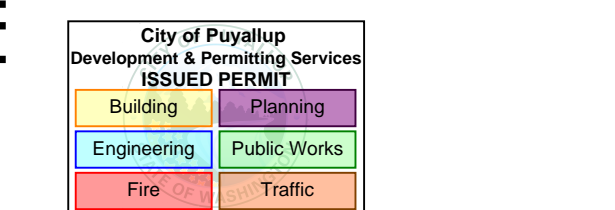


04/15/2026

MultiCare
Good Samaritan
Hospital Kitchen
401 15th Ave SE,
Puyallup,
WA 98372

MultiCare
Good Samaritan Hospital

MULTICARE



KEY PLAN

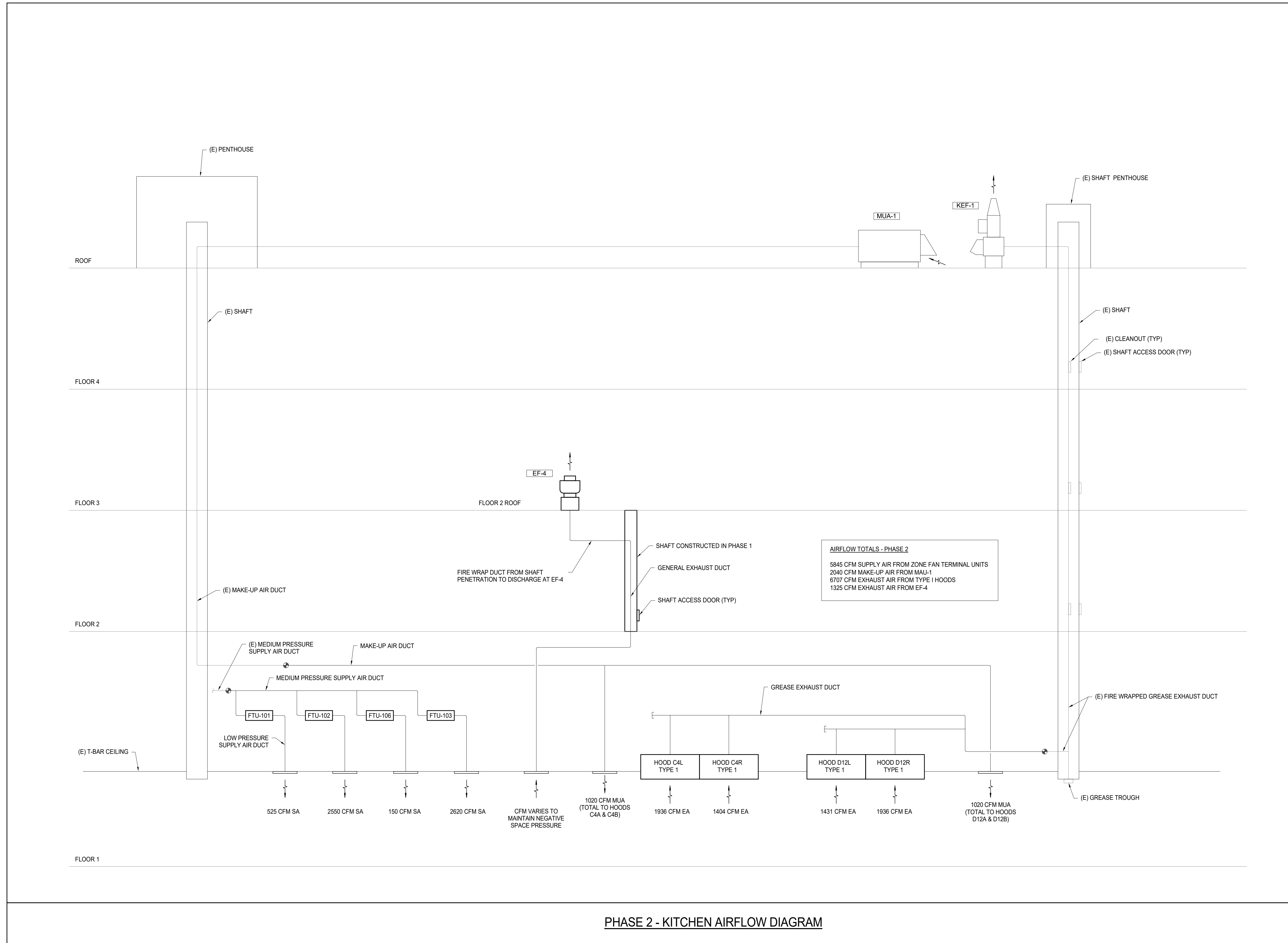
ISSUE CHART

NO.	PERMIT CORRECTIONS	DATE
A	ISSUE	07.11.2025
Job Number	7725-4055	TITLE

AIRFLOW DIAGRAMS - PHASE 2 - MECHANICAL

SHEET NUMBER

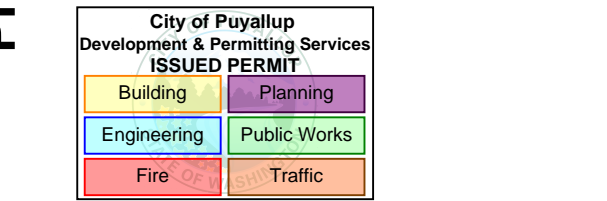
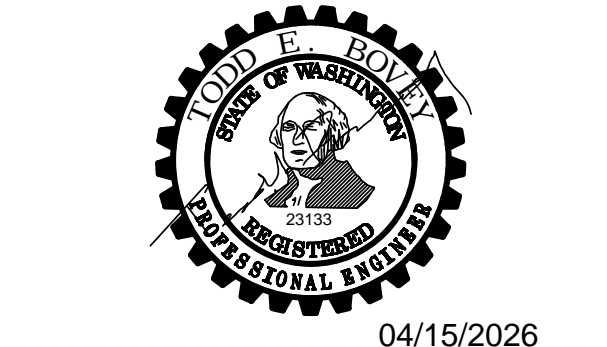
TM4.02



PHASE 2 - KITCHEN AIRFLOW DIAGRAM

4/24/2026 11:29:29 AM Autodesk Docs\MultiCare - Good Samaritan Hospital\Expansion\MECH\MultiCare\Kitchen\REV.dwg

<p>NOTES: CURB DIMENSION ID SHALL BE DUCT DIMENSION PLUS 4" MIN.</p> <p>20 TM6.01</p> <p>ROOF TOP DUCT PENETRATION CURB DETAIL N.T.S.</p>	<p>15 TM6.01</p> <p>ROOFTOP DUCT SUPPORT DETAIL N.T.S.</p>	<p>10 TM6.01</p> <p>VAV BOX DETAIL N.T.S.</p>	<p>NOTE: COORDINATE EQUIPMENT SUPPORT LOCATION WITH STRUCTURAL ENG & G.C</p> <p>5 TM6.01</p> <p>KITCHEN GREASE EXHAUST FAN N.T.S.</p>
<p>19 TM6.01</p> <p>ROOF TOP AC UNIT CURB DETAIL (UNITS 5 TO 25 TON) N.T.S.</p> <p>NOTE: ROOF OPENING AND TEMPORARY WEATHER COVER OF ROOF OPENING BY G.C. *14" IS MINIMUM STANDARD. FOR ABOVE DECK INSULATION APPLICATIONS MAINTAIN 8" DISTANCE FROM UNIT GASKET TO TOP OF FINISHED ROOF.</p>	<p>14 TM6.01</p> <p>DUCTWORK HANGER SCHEDULE / DETAIL N.T.S.</p> <p>FOLLOW CURRENT SMACNA STANDARDS FOR HANGER SPACING TYPE AND SIZE. SEE SMACNA HVAC DUCT CONSTRUCTION STANDARDS</p>	<p>NOTE: COORDINATE EQUIPMENT SUPPORT LOCATION WITH STRUCTURAL ENG & G.C</p> <p>9 TM6.01</p> <p>KEF-1 EXHAUST FAN DETAIL (EXISTING) N.T.S.</p>	<p>4 TM6.01</p> <p>EXHAUST FAN INSTALLATION DETAIL N.T.S.</p> <p>GENERAL NOTES: EXACT DAMPER & CURB SIZE MUST BE CHECKED FOR EQUIPMENT SUBMITTALS. FINAL RESPONSIBILITY FOR CORRECT CURB & DAMPER SIZES BY INSTALLER.</p>
<p>23 TM6.01</p> <p>WATER COOLED CONDENSING UNIT PIPING DETAIL N.T.S.</p>	<p>18 TM6.01</p> <p>ROOF TOP EQUIPMENT SLEEPER SUPPORT DETAIL N.T.S.</p>	<p>COMBINATION FIRE/SMOKE DAMPER INSTALLATION INSTRUCTIONS</p> <p>11 TM6.01</p> <p>FIRE / SMOKE DAMPER INSTALLATION DETAIL N.T.S.</p> <p>NOTE: CAUTION - HEAVY SPRING USED TO LOAD SPRINT LINK ACTUATOR. USE CARE IN RESETTING LINK.</p>	<p>1-1/2 AND 3 HOUR RATED LISTED AND LABELED BY:</p> <p>U_L U_L</p> <p>MANUFACTURES INSTALLATION INSTRUCTIONS TAKE PRIORITY. THIS INFORMATION MEANT TO SUPPLEMENT MANUFACTURES INFORMATION.</p> <p>DAMPERS SHALL BE SECURED TO COLLAR WITH NO. 10 SHEET METAL SCREWS 6" ON CENTER, 1/4" DIA. NUTS AND BOLTS, WELDING, OR 3/16" STEEL POP RIVETS.</p> <p>SEE NOTES 2 AND 3 FOR JOINT DETAIL.</p> <p>ANGLES SHALL BE A MINIMUM OR 1 1/2" X 1 1/2" X 18 GAUGE. FASTEN TO COLLAR WITH 1/4" DIAMETER NUTS AND BOLTS, WELDING 6" ON CENTER, NO. 10 SHEET METAL SCREWS 6" ON CENTER, OR 3/16" STEEL POP RIVETS. (SEE NOTE 4 FOR CLEARANCE AND OVERLAP.)</p> <p>NOTES:</p> <ol style="list-style-type: none"> COLLARS SHALL BE OF THE SAME GAUGE OR HEAVIER AS THE DUCT TO WHICH IT IS ATTACHED. GAUGES SHALL CONFORM TO SMACNA OR ASH-RAE DUCT STANDARDS. COLLARS SHALL EXTEND APPROXIMATELY 3" ON EITHER SIDE OF WALL OR FLOOR TO FACILITATE THE JOINING OF THE COLLAR TO THE DUCT. IN CASES WHERE THE WIDTH OF THE RETAINING ANGLE IS SUCH THAT IT WOULD INHIBIT JOINING THE COLLAR TO THE DUCT, THE COLLAR MAY EXTEND APPROXIMATELY 2" BEYOND THE EDGE OF THE ANGLES. SEE NOTE 3. THE FOLLOWING DUCT-COLLAR CONNECTIONS MAY BE USED ON ALL SYSTEMS: <ul style="list-style-type: none"> INSIDE SLIP PLAIN 'S' SLIP HEMMED 'S' SLIP BAR SLIP ALTERNATE BAR SLIP (STANDING SLIP) REINFORCED BAR SLIP (CLEAT) DOUBLE 'S' SLIP CLIP SLIP DRIVE SLIP POCKET LOCK WHEN THE DUCT WORK TERMINATES AT THE DAMPER, RETAINING ANGLES ON THE OPPOSITE SIDE OF THE OPENING MAY BE REVERSED PROVIDED THE SIZE OF THE OPENING IS INCREASED BY AN AMOUNT EQUAL TO TWICE THE COMBINED THICKNESS OF THE ANGLE AND THE HEIGHT OF THE SCREW OR BOLT HEAD TO MAINTAIN EXPANSION CLEARANCE. (SEE NOTE 4.) IN THIS CASE THE COLLAR AT THE OPEN END MAY BE MADE FLUSH WITH THE EDGE OF THE RETAINING ANGLE. CLEARANCE BETWEEN THE COLLAR AND WALL/FLOOR OPENING SHALL BE 1/8" PER FOOT ON HEIGHT AND WIDTH OF COLLAR TO A MAXIMUM OF 1/2" (E.G. DAMPER 47 3/4" X 47 3/4", COLLAR 48" X 48", OPENING 48 1/2" X 48 1/2"). PERIMETER ANGLES SHALL OVERLAP THE WALL/FLOOR BY A MINIMUM OF 1". MAXIMUM SINGLE DAMPER OF A MULTIPLE ASSEMBLY SHALL BE 36"X48". MAXIMUM MULTIPLE ASSEMBLY SHALL BE 72"X48". IN CASES WHERE THE OPENINGS ARE LARGER THAN SPECIFIED IN NOTE 5, A 12" WIDE BRICK OR REINFORCED CONCRETE MULLION MUST BE PROVIDED BETWEEN ADJACENT ASSEMBLIES. AS WITH ALL JOINTS, CONTRACTOR MUST SEAL DUCT-COLLAR CONNECTIONS, IN FIELD, AFTER INSTALLATION. SUITABLE ACCESS SERVICE OPENINGS MUST BE PROVIDED TO MAKE FIRE DAMPERS ACCESSIBLE FOR INSPECTION AND SERVICING. HORIZONTAL MOUNTINGS IDENTICAL. <p>IMPORTANT:</p> <ul style="list-style-type: none"> DO NOT CAST DAMPER IN PLACE. DO NOT FASTEN RETAINING ANGLES OR DAMPER DIRECTLY TO WALL OR FLOOR. CYCLE DAMPER AFTER INSTALLATION TO INSURE FREE MOVEMENT. DO NOT INSTALL DAMPER OUT OF SQUARE OR OUT OF FLAT. INSTALL DAMPER IN PLANE OF FIRE SEPARATION.
<p>22 TM6.01</p> <p>PIPING THRU RATED WALLS N.T.S.</p> <p>NOTE: INSTALL PER MFG. INSTRUCTIONS AND UL LISTING</p>	<p>16 TM6.01</p> <p>GREASE RESERVOIR N.T.S.</p>	<p>NOTE: COORDINATE EQUIPMENT SUPPORT LOCATION WITH STRUCTURAL ENG & G.C</p> <p>3 TM6.01</p> <p>DIFFUSER CAN DETAIL (NO PERF) N.T.S.</p>	<p>2 TM6.01</p> <p>DUCTED TRANSFER GRILLE INSULATION DETAIL N.T.S.</p>
<p>21 TM6.01</p> <p>HYDRONIC COIL WITH 2-WAY CONTROL DETAIL N.T.S.</p> <p>NOTE: A COMPLETE HOSE KIT W/ ALL COMPONENTS MAY BE PROVIDED.</p>	<p>11 TM6.01</p> <p>FIRE / SMOKE DAMPER INSTALLATION DETAIL N.T.S.</p>	<p>1 TM6.01</p> <p>DIFFUSER INSTALLATION DETAIL N.T.S.</p>	<p>NOTE: COORDINATE EQUIPMENT SUPPORT LOCATION WITH STRUCTURAL ENG & G.C</p> <p>4 TM6.01</p> <p>EXHAUST FAN INSTALLATION DETAIL N.T.S.</p> <p>GENERAL NOTES: EXACT DAMPER & CURB SIZE MUST BE CHECKED FOR EQUIPMENT SUBMITTALS. FINAL RESPONSIBILITY FOR CORRECT CURB & DAMPER SIZES BY INSTALLER.</p>



PHASE 2 REV 1 04.24.2026