



MacDonald-Miller
FACILITY SOLUTIONS
17930 Intl. Blvd, Suite, 120 SeaTac, WA 98188
Phone: 206-763-9400 www.macmiller.com



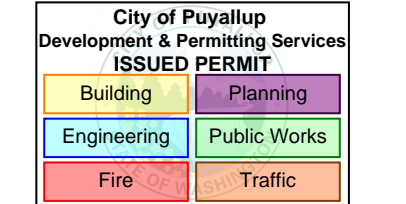
4/24/2026

MultiCare
Good Samaritan
Hospital Kitchen
401 15th Ave SE,
Puyallup,
WA 98372

PHASE 2 REV 1 04.24.2026

MultiCare
Good Samaritan Hospital

MULTICARE



City of Puyallup
Development & Permitting Services
ISSUED PERMIT



KEY PLAN

ISSUE CHART

B	CoPDDH	11.20.2025
A	Permit Corrections	07.11.2025
ISSUE	DATE	
Job Number	7725-4055	

TITLE

SCHEDULES -
PLUMBING

SHEET NUMBER

TP0.03

PROJECT RESPONSIBILITY MATRIX																	
UNIT NO.	DESCRIPTION	BMS			NON BMS					PROVIDED BY	INSTALLED BY	POWER WIRING BY	CONTROLS WIRING BY	FIRE ALARM WIRING BY	TEST AND BALANCE BY	NOTES	
		S/S	TC	T'STAT	INTERLOCK	24 HOUR	FIRE/LIFE SAFETY	OTHER									
PART A: NEW PLUMBING EQUIPMENT																	
A1	GREASE INTERCEPTORS	-	-	-	-	-	-	-	-	-	PC	PC	-	-	-	PC	1,3,13
PART B: PLUMBING EQUIPMENT ANCILLARIES																	
B1	ARCHITECTURAL ACCESS DOORS/PANELS FOR PLUMBING EQUIPMENT ACCESS	-	-	-	-	-	-	-	-	-	GC	GC	-	-	-	-	
B2	PIPE SLEEVES	-	-	-	-	-	-	-	-	-	PC	PC	-	-	-	-	
B3	FIRE SAFING AROUND PLUMBING EQUIPMENT: PIPING, ETC.	-	-	-	-	-	-	-	-	-	PC	PC	-	-	-	-	
B4	CALLING FOR WEATHER PROTECTION AROUND EXTERIOR PLUMBING DEVICES (PIPE PENETRATIONS, ETC.)	-	-	-	-	-	-	-	-	-	GC	GC	-	-	-	-	
B5	FLOOR DRAINS	-	-	-	-	-	-	-	-	-	PC	PC	-	-	-	PC	1,3,8
B6	WALL/CEILING SOUND MITIGATION	-	-	-	-	-	-	-	-	-	GC	GC	-	-	-	-	
B7	NATURAL GAS SHUTOFF VALVE FOR FIRE SUPPRESSION SYSTEM	-	-	-	-	-	-	-	-	-	PC	PC	EC	GC	FAC	FAC	1,3,5
Part C: PLUMBING MISC																	
C1	PLUMBING FIXTURES, VALVES, BACKFLOW DEVICES, WATER TANKS, TRAP PRIMERS, HYDRANTS AND HOSE BIBBS	-	-	-	-	-	-	-	-	-	PC	PC	EC	-	-	PC	1,2,3,4,9
C2	IMPORT AND EXPORT OF SOILS	-	-	-	-	-	-	-	-	-	GC	GC	-	-	-	-	
C3	PIPE BEDDING	-	-	-	-	-	-	-	-	-	PC	PC	-	-	-	10	
C4	SUBGRADE WALL PENETRATIONS BY PIPING	-	-	-	-	-	-	-	-	-	PC	PC	-	-	-	-	
C5	EQUIPMENT ACCESS PLATFORMS & WALK-ON MATTS FOR EQUIPMENT ACCESS	-	-	-	-	-	-	-	-	-	GC	GC	-	-	-	-	
C6	ROOF AND WATERPROOF MEMBRANES PENETRATIONS BY PLUMBING PIPING	-	-	-	-	-	-	-	-	-	PC	PC	-	-	-	-	7
C7	UTILITY PIPING TO 5 FEET OUTSIDE OF THE BLDG	-	-	-	-	-	-	-	-	-	PC	PC	-	-	-	-	6,11,12
Part D: DEMOLITION																	
D1	DEMOLITION AND MAKE SAFE OF EXISTING PLUMBING EQUIPMENT AND ASSOCIATED UTILITIES	-	-	-	-	-	-	-	-	-	PC	PC	EC	CC	FAC	-	-
D2	DEMOLITION AND MAKE SAFE OF EXISTING GREASE INTERCEPTOR AND ASSOCIATED...	-	-	-	-	-	-	-	-	-	GC	GC	-	-	-	-	-
ABBREVIATIONS:																	
AFF	ABOVE FINISHED FLOOR	GC	GENERAL CONTRACTOR & OTHER TRADES									TC	TIME CLOCK				
CC	CONTROL CONTRACTOR	PC	PLUMBING CONTRACTOR									VAV	VARIABLE AIR				
EC	ELECTRICAL CONTRACTOR	KEC	KITCHEN EQUIPMENT CONTRACTOR									VFD	VARIABLE FREQUENCY DRIVE				
FAC	FIRE ALARM CONTRACTOR	S/S	START/STOP									BMS	BUILDING MANAGEMENT SYSTEM				
MC	MECHANICAL CONTRACTOR																
NOTES:																	
1. COORDINATE PROPER ACCESS FOR INSTALLATION AND MAINTENANCE WITH ARCHITECT & GC.																	
2. PC TO COORDINATE LOCATIONS OF ACCESS DOORS, GC TO FURNISH AND INSTALL ACCESS DEVICES.																	
3. GC TO ALTER CONSTRUCTION TO MEET CODE REQUIRED CLEARANCES AND DIRECT OTHER TRADES TO MEET INSTALLATION REQUIREMENTS.																	
4. EC TO PROVIDE POWER AND SERVICE DISCONNECT SWITCH WHEN REQUIRED.																	
5. EC TO FURNISH AND INSTALL NATURAL GAS EMERGENCY SHUTDOWN SWITCHES, POWER AND WIRING FOR KITCHEN HOOD FIRE SUPPRESSION SYSTEM.																	
6. REFRIGERANT PIPING PROVIDED AND INSTALLED BY KEC. MC TO PROVIDE AND INSTALL CONDENSATE PIPING FROM INDOOR EVAPORATOR COIL TO DRAIN.																	
7. ROOFING AND FLASHING BY GC.																	
8. PC TO COORDINATE LOCATION, TOP OF FLOOR DRAIN ELEVATION AND MEMBRANES IF REQUIRED WITH GC. SLOPE TO DRAIN BY GC.																	
9. PC TO COORDINATE LOCATION OF ELEVATION AND OTHER FIXTURE REQUIREMENTS WITH GC.																	
10. PIPE BEDDING MATERIAL AND PIPE BEDDING IS BY PC. CLOSURE OF TRENCH BY GC.																	
11. PIPE PENETRATION AND SEAL BY PC.																	
12. UTILITY PIPING PENETRATING THE BUILDING TO WITHIN 5 FEET PERPENDICULAR FROM THE BUILDING BY PC. PC TO COORDINATE LOCATIONS AND ELEVATIONS WITH GC.																	
13. GC SHALL CONSTRUCT CONCRETE FORMING AND FRAMING AS REQUIRED TO SUPPORT PLUMBING EQUIPMENT. PC SHALL COORDINATE SIZES AND LOCATIONS WITH GC.																	

FOOD SERVICE EQUIPMENT PLUMBING SCHEDULE - PHASE 2 AREA C																						
NO.	DESCRIPTION	DRAINAGE					COLD WATER					HOT WATER					NATURAL GAS					REMARKS
		SANITARY WASTE (DIRECT)	SANITARY WASTE (INDIRECT)	GREASE WASTE (DIRECT)	GREASE WASTE (INDIRECT)	DRAIN DISCHARGE (GPM)	VENT SIZE	PIPE SIZE	FILTERED WATER PIPE SIZE	GPM	TEMP (°F)	PRESSURE (PSIG)	PIPE SIZE	GPM	GPH	TEMP (°F)	PRESSURE (PSIG)	PIPE SIZE	MBH INPUT	PRESSURE (INCH WC)		
C11	PASTA COOKER							1/2"														
C13	COUNTER TOP GRIDDLE																	3/4"	120	6		
C15	COUNTER TOP CHAR BROILER																	1/2"	76	8-14		
C16	COUNTER TOP 6 BURNER RANGE																	1/2"	180	8-14		
C17	POT FILLER							1/2"														
C33.1	HAND SINK W/ SIDE SPLASHES	2"						1/2"					1/2"								PROVIDE W/ "MV-1" ASSE1070 THERMOSTATIC MIXING VALVE.	
C45	HAND SINK W/ SIDE SPLASHES	2"						1/2"					1/2"								PROVIDE W/ "MV-1" ASSE1070 THERMOSTATIC MIXING VALVE.	
C46	COFFEE BREWER W/ URNS								1/4"												△ FILTERED WATER FROM C47. PROVIDE WITH 1/2" RPBA "BFP-03."	
C47	WATER FILTERS							3/8"													CONNECT FILTERED WATER TO C46 & C54.	
NOTES:																						
1. THE ABOVE SCHEDULE CONTAINS OWNER FURNISHED FOOD SERVICE EQUIPMENT & FIXTURES THAT REQUIRE PLUMBING UTILITIES. REFER TO THE FOOD SERVICE / KITCHEN CONSULTANT'S DOCUMENTS FOR ROUGH-IN REQUIREMENTS & EXACT LOCATIONS OF ALL FOOD SERVICE FIXTURES & EQUIPMENT.																						
2. WHERE INDIRECT DRAINS ARE REQUIRED, CONTRACTOR MUST ROUTE INDIRECT DRAIN PIPING FROM FIXTURES & EQUIPMENT TO ADJACENT FLOOR RECEPTOR(S) AS REQUIRED. INDIRECT DRAIN DISCHARGE OVER FLOOR RECEPTOR(S) MUST CONTAIN APPROVED AIR BREAK(S). CONTRACTOR MUST PROVIDE A MINIMUM OF 1" THICK INSULATION (WITH APPROVED SANITARY BARRIER WRAP) FOR CONDENSATE AND / OR REFRIGERATED WASTE PIPING DISCHARGING INTO INDIRECT RECEPTORS TO PREVENT SWEATING (I.E. ALL PIPING WITH A TEMPERATURE LOWER THAN 60°F). REFER TO FOOD SERVICE / KITCHEN CONSULTANT'S DOCUMENTS FOR ADDITIONAL REQUIREMENTS.																						
3. PLASTIC OR STAINLESS STEEL MATERIAL MUST BE USED FOR WASTE PIPING INSTALLED TO RECEIVE CARBONATED LIQUID WASTE. THE PLASTIC OR STAINLESS STEEL MATERIAL MUST BE INSTALLED TO A POINT DOWNSTREAM OF THE NEAREST FREQUENTLY USED DRAIN BRANCH TO ENSURE PROPER DILUTION OF THE CARBONATED LIQUID WASTE & PREVENT DOWNSTREAM CORROSION OF INCOMPATIBLE PIPE MATERIAL.																						
4. PROVIDE EMERGENCY DRAIN PAN ASSEMBLY DIRECTLY UNDERNEATH ALL DRAINAGE PIPING LOCATED ABOVE FOOD SERVICE AREAS. PROVIDE MINIMUM 1" COPPER DRAIN PIPE CONNECTION AT DRAIN PAN LOW POINTS, & ROUTE TO NEAREST FLOOR RECEPTOR WITH APPROVED AIR GAP & EMERGENCY SIGNAGE.																						
5. PROVIDE DEDICATED ISOLATION VALVE & UNIONS AT UTILITY CONNECTIONS FOR EACH APPLIANCE & EQUIPMENT ITEM IN ADDITION TO SPECIALTIES & DEVICES LISTED ABOVE.																						
6. PROVIDE WATER HAMMER ARRESTER AT ALL WATER SUPPLY CONNECTIONS TO EQUIPMENT.																						

FOOD SERVICE EQUIPMENT PLUMBING SCHEDULE - PHASE 2 AREA D																						
NO.	DESCRIPTION	DRAINAGE					COLD WATER					HOT WATER					NATURAL GAS					REMARKS
		SANITARY WASTE (DIRECT)	SANITARY WASTE (INDIRECT)	GREASE WASTE (DIRECT)	GREASE WASTE (INDIRECT)	DRAIN DISCHARGE (GPM)	VENT SIZE	PIPE SIZE	FILTERED WATER PIPE SIZE	GPM	TEMP (°F)	PRESSURE (PSIG)	PIPE SIZE	GPM	GPH	TEMP (°F)	PRESSURE (PSIG)	PIPE SIZE	MBH INPUT	PRESSURE (INCH WC)		
D1	HAND SINK W/ SIDE SPLASHES	2"						1/2"					1/2"								PROVIDE W/ "MV-1" ASSE1070 THERMOSTATIC MIXING VALVE.	
D17	PASTA COOKER							1/2"														
D18	POT FILLER							1/2"														
D23	COUNTER TOP 6 BURNER RANGE																	3/4"	180	6		
D25	COUNTER TOP GRIDDLE																	1/2"	120	8-14		
D27	COUNTER TOP CHAR BROILER																	1/2"	76	8-14		
D45	WATER FILTER								1/4"												△ CONNECT FILTERED WATER TO D46. PROVIDE WITH 1/2" RPBA "BFP-03."	
D46	COFFEE BREWER W/ URNS								1/4"												FILTERED WATER FROM D45.	
D31	HAND SINK W/ PEDESTAL BASE	2"						1/2"					1/2"								PROVIDE W/ "MV-1" ASSE1070 THERMOSTATIC MIXING VALVE.	
D61	S/S STANDARD FLOOR TROUGH W/ GRATE			4"					2"													
D63	CUBE ICE MAKER	3/4"							1/2"												PROVIDE WITH 1/2" RPBA "BFP-01" & WATER HAMMER ARRESTER. IW PIPE TO RECEPTOR WITH APPROVED AIR GAP.	
D64	WATER FILTER								1/2"												CONNECT FILTERED WATER TO D74.	
D68	AMBIENT CARBONATOR								1/2"												FILTERED WATER FROM D71.	
D71	WATER FILTER								1/2"												CONNECT FILTERED WATER TO D68.	
D74	ICE CUBE MAKER								1/2"												FILTERED WATER FROM D64.	
NOTES:																						
1. THE ABOVE SCHEDULE CONTAINS OWNER FURNISHED FOOD SERVICE EQUIPMENT & FIXTURES THAT REQUIRE PLUMBING UTILITIES. REFER TO THE FOOD SERVICE / KITCHEN CONSULTANT'S DOCUMENTS FOR ROUGH-IN REQUIREMENTS & EXACT LOCATIONS OF ALL FOOD SERVICE FIXTURES & EQUIPMENT.																						
2. WHERE INDIRECT DRAINS ARE REQUIRED, CONTRACTOR MUST ROUTE INDIRECT DRAIN PIPING FROM FIXTURES & EQUIPMENT TO ADJACENT FLOOR RECEPTOR(S) AS REQUIRED. INDIRECT DRAIN DISCHARGE OVER FLOOR RECEPTOR(S) MUST CONTAIN APPROVED AIR BREAK(S). CONTRACTOR MUST PROVIDE A MINIMUM OF 1" THICK INSULATION (WITH APPROVED SANITARY BARRIER WRAP) FOR CONDENSATE AND / OR REFRIGERATED WASTE PIPING DISCHARGING INTO INDIRECT RECEPTORS TO PREVENT SWEATING (I.E. ALL PIPING WITH A TEMPERATURE LOWER THAN 60°F). REFER TO FOOD SERVICE / KITCHEN CONSULTANT'S DOCUMENTS FOR ADDITIONAL REQUIREMENTS.																						
3. PLASTIC OR STAINLESS STEEL MATERIAL MUST BE USED FOR WASTE PIPING INSTALLED TO RECEIVE CARBONATED LIQUID WASTE. THE PLASTIC OR STAINLESS STEEL MATERIAL MUST BE INSTALLED TO A POINT DOWNSTREAM OF THE NEAREST FREQUENTLY USED DRAIN BRANCH TO ENSURE PROPER DILUTION OF THE CARBONATED LIQUID WASTE & PREVENT DOWNSTREAM CORROSION OF INCOMPATIBLE PIPE MATERIAL.																						
4. PROVIDE EMERGENCY DRAIN PAN ASSEMBLY DIRECTLY UNDERNEATH ALL DRAINAGE PIPING LOCATED ABOVE FOOD SERVICE AREAS. PROVIDE MINIMUM 1" COPPER DRAIN PIPE CONNECTION AT DRAIN PAN LOW POINTS, & ROUTE TO NEAREST FLOOR RECEPTOR WITH APPROVED AIR GAP & EMERGENCY SIGNAGE.																						
5. PROVIDE DEDICATED ISOLATION VALVE & UNIONS AT UTILITY CONNECTIONS FOR EACH APPLIANCE & EQUIPMENT ITEM IN ADDITION TO SPECIALTIES & DEVICES LISTED ABOVE.																						
6. PROVIDE WATER HAMMER ARRESTER AT ALL WATER SUPPLY CONNECTIONS TO EQUIPMENT.																						

CONSULTANTS

- FOOD SERVICE
INMAN FOOD SERVICES
3807 Charlotte Avenue,
Nashville, Tennessee 37209
- CIVIL
AHBL
1200 5th Ave #1620,
Seattle, WA 98101
- STRUCTURAL
PCS
1011 Western Avenue, Suite 810
Seattle, WA 98104
- CONTRACTOR
SELLEN
227 Westlake Ave,
Seattle, WA 98109
- PLUMBING
MACDONALD MILLER
17930 International Blvd,
Suite 120, SeaTac, WA 98159
- MECHANICAL
MACDONALD MILLER
17930 International Blvd,
Suite 120, SeaTac, WA 98188
- ELECTRICAL
EBD SERVICES
14900 Interurban Ave S #143
Seattle, WA 98168
- PROJECT MANAGER
TURNER & TOWNSEND
920 Fifth Avenue,
Seattle, WA, 98104



MacDonald-Miller
FACILITY SOLUTIONS
17930 Intl. Blvd, Suite, 120 SeaTac, WA 98188
Phone: 206-763-9400 www.macmiller.com



4/24/2026

MultiCare
Good Samaritan
Hospital Kitchen
401 15th Ave SE,
Puyallup,
WA 98372

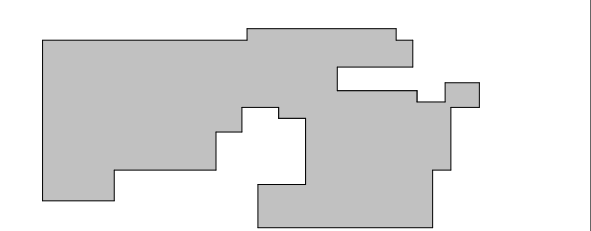
MultiCare
Good Samaritan Hospital

MULTICARE

City of Puyallup
Development & Permitting Services
ISSUED PERMIT

Building	Planning
Engineering	Public Works
Fire	Traffic

KEY PLAN

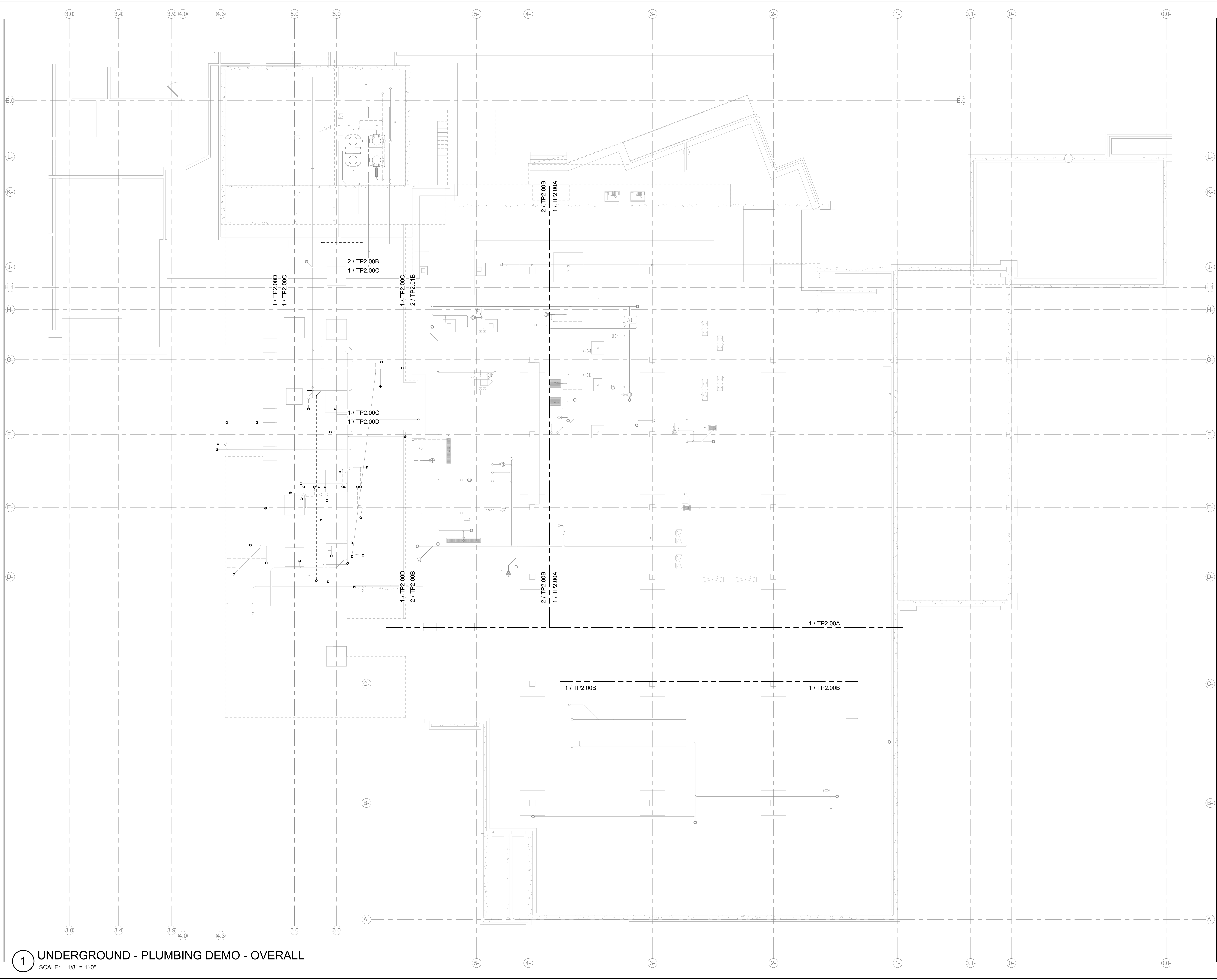


ISSUE CHART

ISSUE	DATE
Job Number	7725-4055

TITLE
LEVEL 01 DEMOLITION
UNDERGROUND
OVERALL PLAN -
PLUMBING
SHEET NUMBER

DP2.00



1 UNDERGROUND - PLUMBING DEMO - OVERALL
SCALE: 1/8" = 1'-0"

CONSULTANTS

FOOD SERVICE

INMAN FOOD SERVICES
3807 Charlotte Avenue,
Nashville, Tennessee 37209

CIVIL

AHBL
1200 6th Ave #1620,
Seattle, WA 98101

STRUCTURAL

PCS
1011 Western Avenue, Suite 810
Seattle, WA 98104

CONTRACTOR

SELLEN
227 Westlake Ave,
Seattle, WA 98109

PLUMBING

MACDONALD MILLER
17930 International Blvd,
Suite 120, SeaTac, WA 98188

MECHANICAL

MACDONALD MILLER
17930 International Blvd,
Suite 120, SeaTac, WA 98188

ELECTRICAL

EBD SERVICES
14900 International Ave S #143
Seattle, WA 98188

PROJECT MANAGER

TURNER & TOWNSEND
920 Fifth Avenue,
Seattle, WA, 98104



MacDonald-Miller
FACILITY SOLUTIONS
17930 Intl. Blvd, Suite, 120 SeaTac, WA 98188
Phone: 206-763-9400 www.macmiller.com



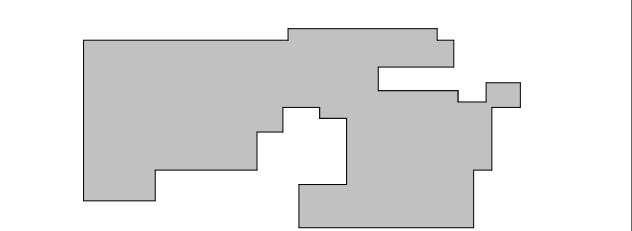
4/24/2026

MultiCare
Good Samaritan
Hospital Kitchen
401 15th Ave SE,
Puyallup,
WA 98372

MultiCare
Good Samaritan Hospital
MULTICARE

Building	Planning
Engineering	Public Works
Fire	Traffic

KEY PLAN

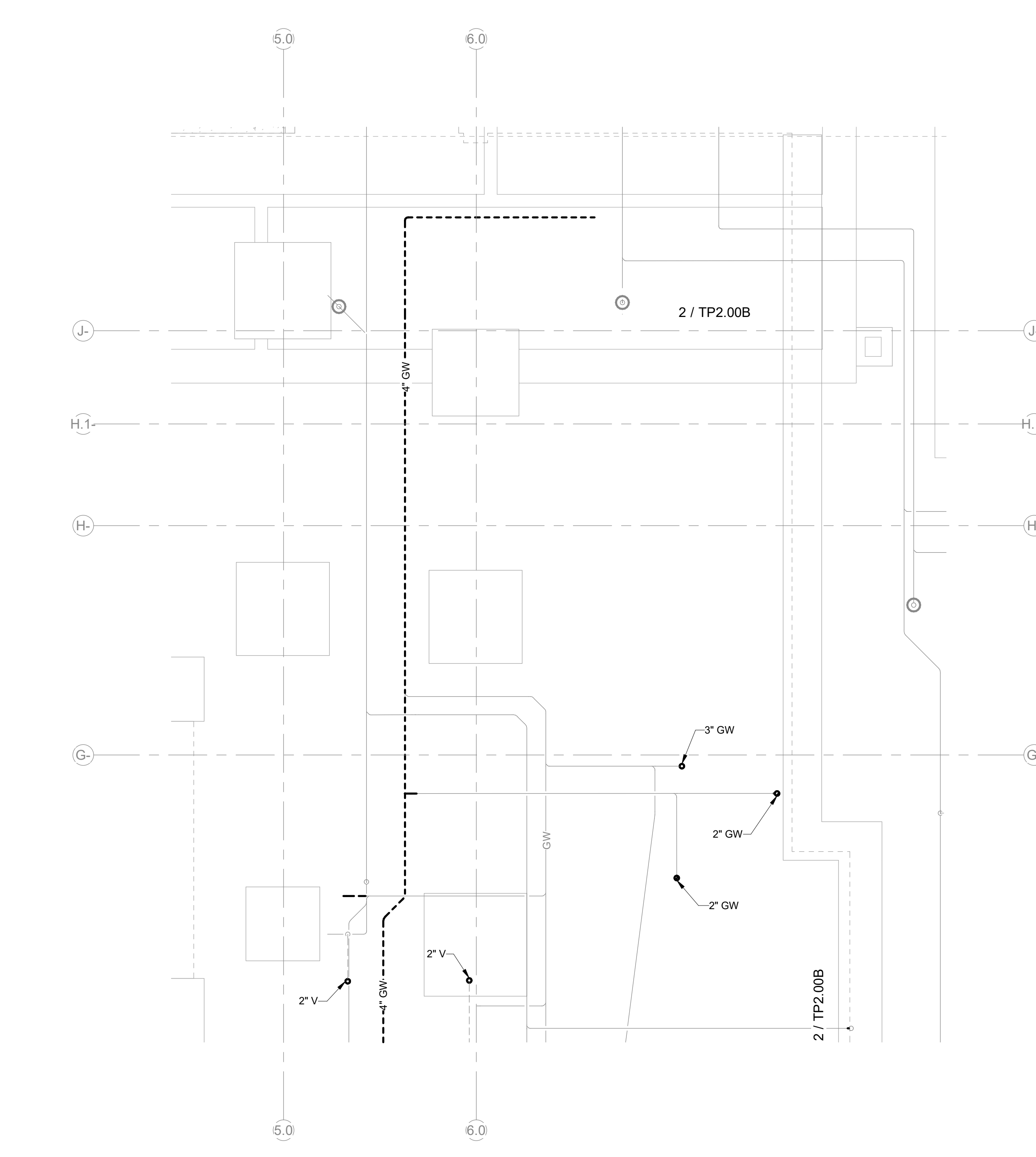


ISSUE CHART

ISSUE	DATE
Job Number	7725-4055

LEVEL 01 DEMOLITION
UNDERGROUND PLAN -
PLUMBING - AREA C

SHEET NUMBER
DP2.00C

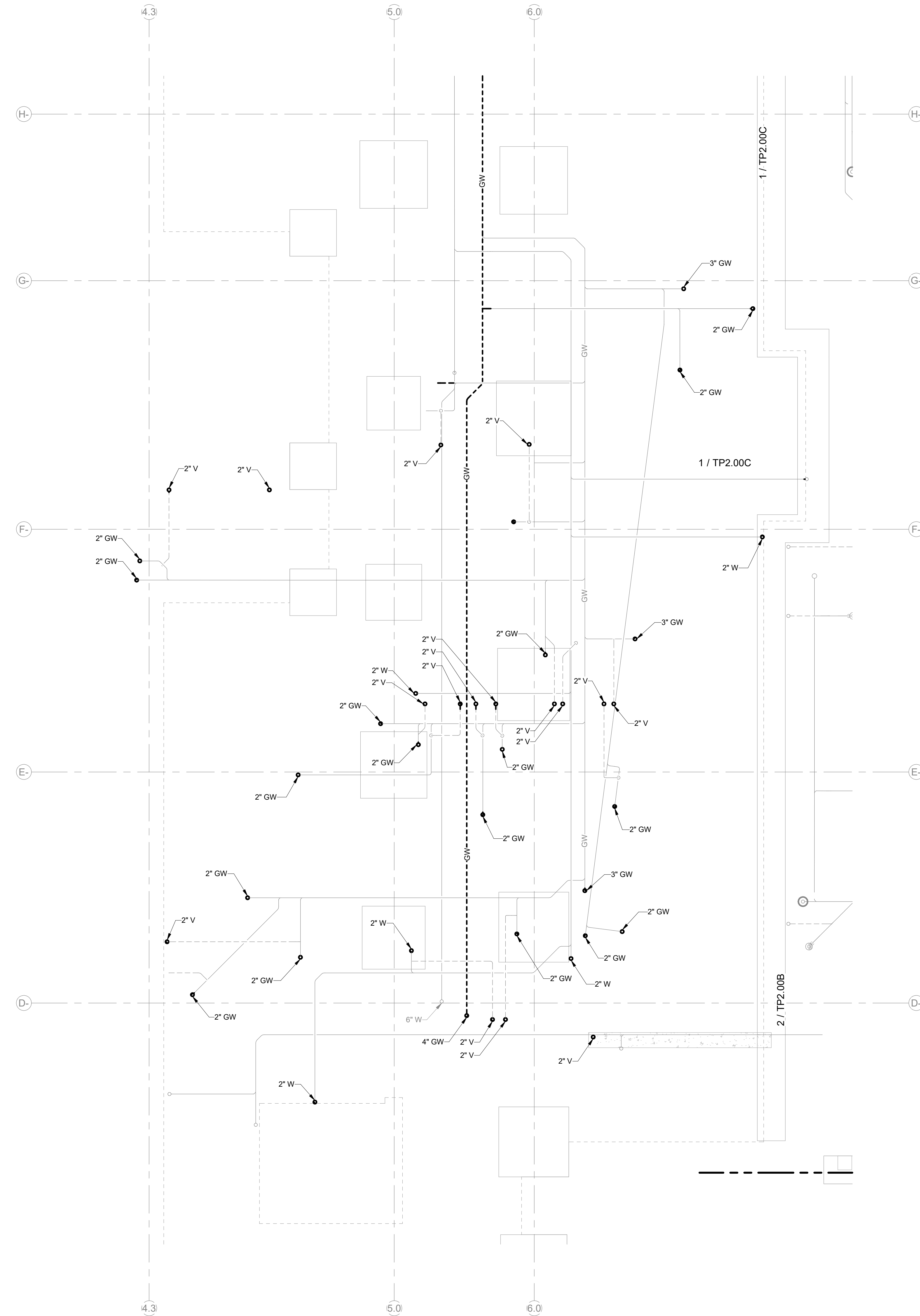


GENERAL NOTES:
1. CUT AND CAP ALL EXISTING WASTE STUBS 6-INCHES BELOW SLAB. PATCH FLOOR TO MATCH EXISTING. COORDINATE PATCHING WITH ARCHITECTURAL.

1 UNDERGROUND - PLUMBING DEMO - AREA C
SCALE: 1/4" = 1'-0"

PHASE 2 REV 1 04.24.2026

4/24/2026 3:09:15 PM Autodesk Docs\MultiCare - Good Samaritan Hospital Kitchen Expansion\PLUMBING\MultiCare-Kitchen-DES-14



1 UNDERGROUND - PLUMBING DEMO - AREA D
SCALE: 1/4" = 1'-0"

GENERAL NOTES:
1. CUT AND CAP ALL EXISTING WASTE STUBS 6-INCHES BELOW SLAB. PATCH FLOOR TO MATCH EXISTING. COORDINATE PATCHING WITH ARCHITECTURAL.

Perkins&Will

1301 5th Ave
#2300, Seattle,
WA 98101
T: +12063816000
www.perkinswill.com

CONSULTANTS

FOOD SERVICE

INMAN FOOD SERVICES
3807 Charlotte Avenue,
Nashville, Tennessee 37209

CIVIL

AHBL
1200 6th Ave #1620,
Seattle, WA 98101

STRUCTURAL

PCS
1011 Western Avenue, Suite 810
Seattle, WA 98104

CONTRACTOR

SELLEN
227 Westlake Ave,
Seattle, WA 98109

PLUMBING

MACDONALD MILLER
17930 International Blvd,
Suite 120, SeaTac, WA 98188

MECHANICAL

MACDONALD MILLER
17930 International Blvd,
Suite 120, SeaTac, WA 98188

ELECTRICAL

EBD SERVICES
14900 Interurban Ave S #143
Seattle, WA 98168

PROJECT MANAGER

TURNER & TOWNSEND
920 Fifth Avenue,
Seattle, WA, 98104



MacDonald-Miller
FACILITY SOLUTIONS
17930 Intl. Blvd, Suite, 120 SeaTac, WA 98188
Phone: 206-763-9400 www.macmiller.com

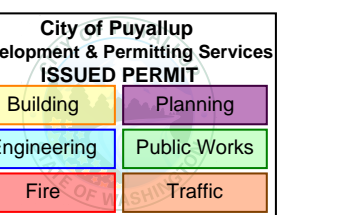


4/24/2026

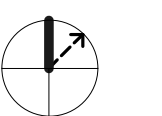
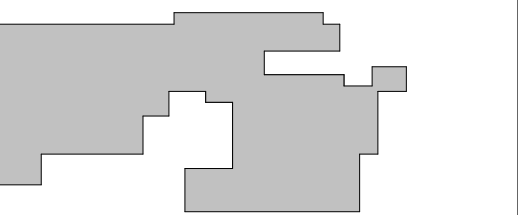
MultiCare
Good Samaritan
Hospital Kitchen
401 15th Ave SE,
Puyallup,
WA 98372

MultiCare
Good Samaritan Hospital

MULTICARE



KEY PLAN



ISSUE CHART

ISSUE	ISSUE	DATE
Job Number	7725-4055	
TITLE		

LEVEL 01 DEMOLITION
UNDERGROUND PLAN -
PLUMBING - AREA D

SHEET NUMBER

DP2.00D

PHASE 2 REV 1 04.24.2026



MacDonald-Miller
FACILITY SOLUTIONS
17930 Intl. Blvd, Suite, 120 SeaTac, WA 98188
Phone: 206-763-9400 www.macmiller.com

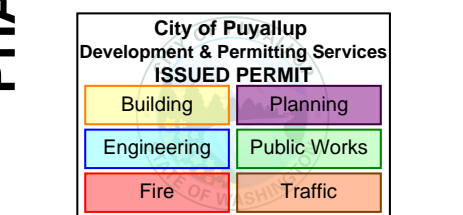


4/24/2026

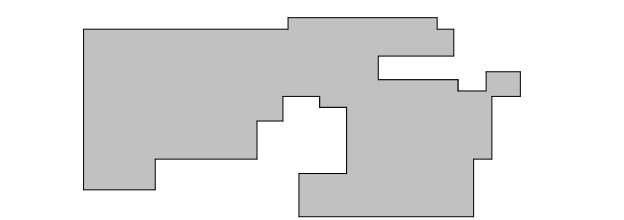
MultiCare
Good Samaritan
Hospital Kitchen
401 15th Ave SE,
Puyallup,
WA 98372

MultiCare
Good Samaritan Hospital

MULTICARE



KEY PLAN

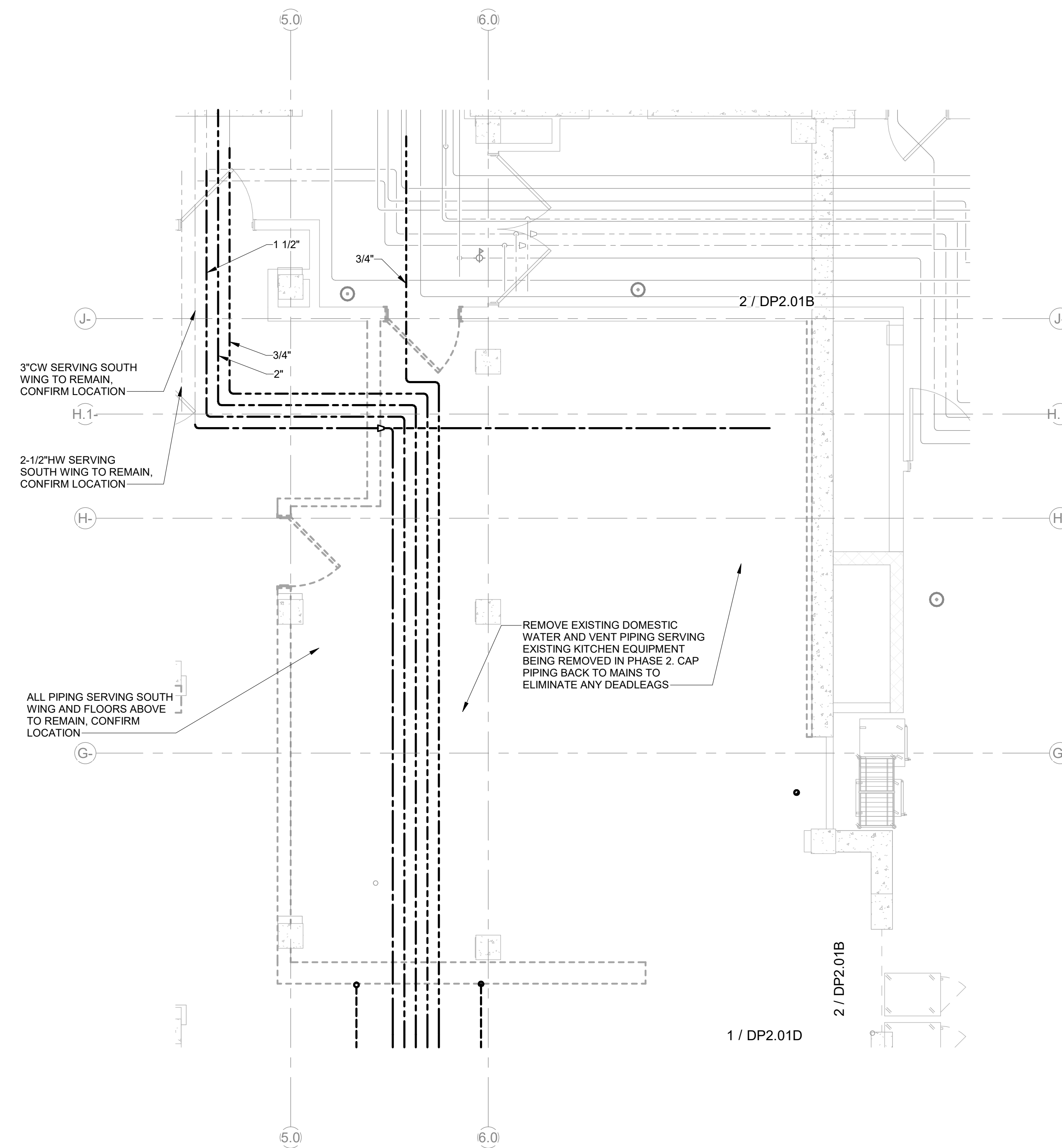


ISSUE	ISSUE	DATE
Job Number	7725-4055	
TITLE		

LEVEL 01 DEMOLITION
FLOOR PLAN - PHASE 2
AREA C - PLUMBING

SHEET NUMBER

DP2.01C



GENERAL NOTES:

- CUT AND CAP ALL EXISTING WASTE STUBS IN WALL OR 6-INCHES BELOW SLAB. PATCH WALL/FLOOR TO MATCH EXISTING. COORDINATE PATCHING WITH ARCHITECTURAL.
- REMOVE ALL FLOOR DRAINS AND FLOOR SINKS. CUT AND CAP WASTE PIPING 6-INCHES BELOW SLAB. PATCH FLOOR TO MATCH EXISTING. COORDINATE PATCHING WITH ARCHITECTURAL.
- CONTRACTOR TO CONFIRM WITH ENGINEER PRIOR TO ANY REMOVAL OF PIPING NOT SERVING EXISTING KITCHEN FIXTURES OR EQUIPMENT.

1 LEVEL 01 - PLUMBING DEMO - AREA C
SCALE: 1/4" = 1'-0"

CONSULTANTS

- FOOD SERVICE**
- INMAN FOOD SERVICES**
 3807 Charlotte Avenue,
 Nashville, Tennessee 37209
 CIVIL
- AHBL**
 1200 5th Ave #1620,
 Seattle, WA 98101
- STRUCTURAL**
- PCS**
 1011 Western Avenue, Suite 810
 Seattle, WA 98104
- CONTRACTOR**
- SELLEN**
 227 Westlake Ave,
 Seattle, WA 98109
- PLUMBING**
- MACDONALD MILLER**
 17930 International Blvd,
 Suite 120, SeaTac, WA 98188
- MECHANICAL**
- MACDONALD MILLER**
 17930 International Blvd,
 Suite 120, SeaTac, WA 98188
- ELECTRICAL**
- EBD SERVICES**
 14900 International Ave S #143
 Seattle, WA 98168
- PROJECT MANAGER**
- TURNER & TOWNSEND**
 920 Fifth Avenue,
 Seattle, WA 98104



MacDonald-Miller
FACILITY SOLUTIONS
 17930 Intl. Blvd. Suite. 120 SeaTac, WA 98188
 Phone: 206-763-9400 www.macmiller.com



4/24/2026

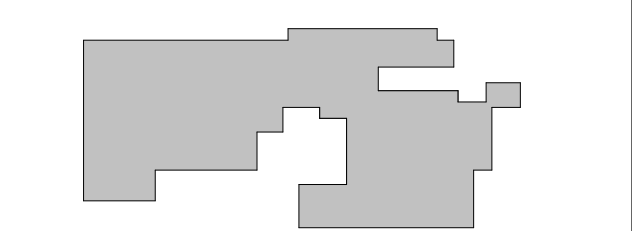
MultiCare
Good Samaritan
Hospital Kitchen
 401 15th Ave SE,
 Puyallup, WA 98372

MultiCare
Good Samaritan Hospital
MULTICARE

City of Puyallup
 Development & Permitting Services
ISSUED PERMIT

Building	Planning
Engineering	Public Works
Fire	Traffic

KEY PLAN



ISSUE CHART

ISSUE	ISSUE	DATE
Job Number	7725-4055	TITLE

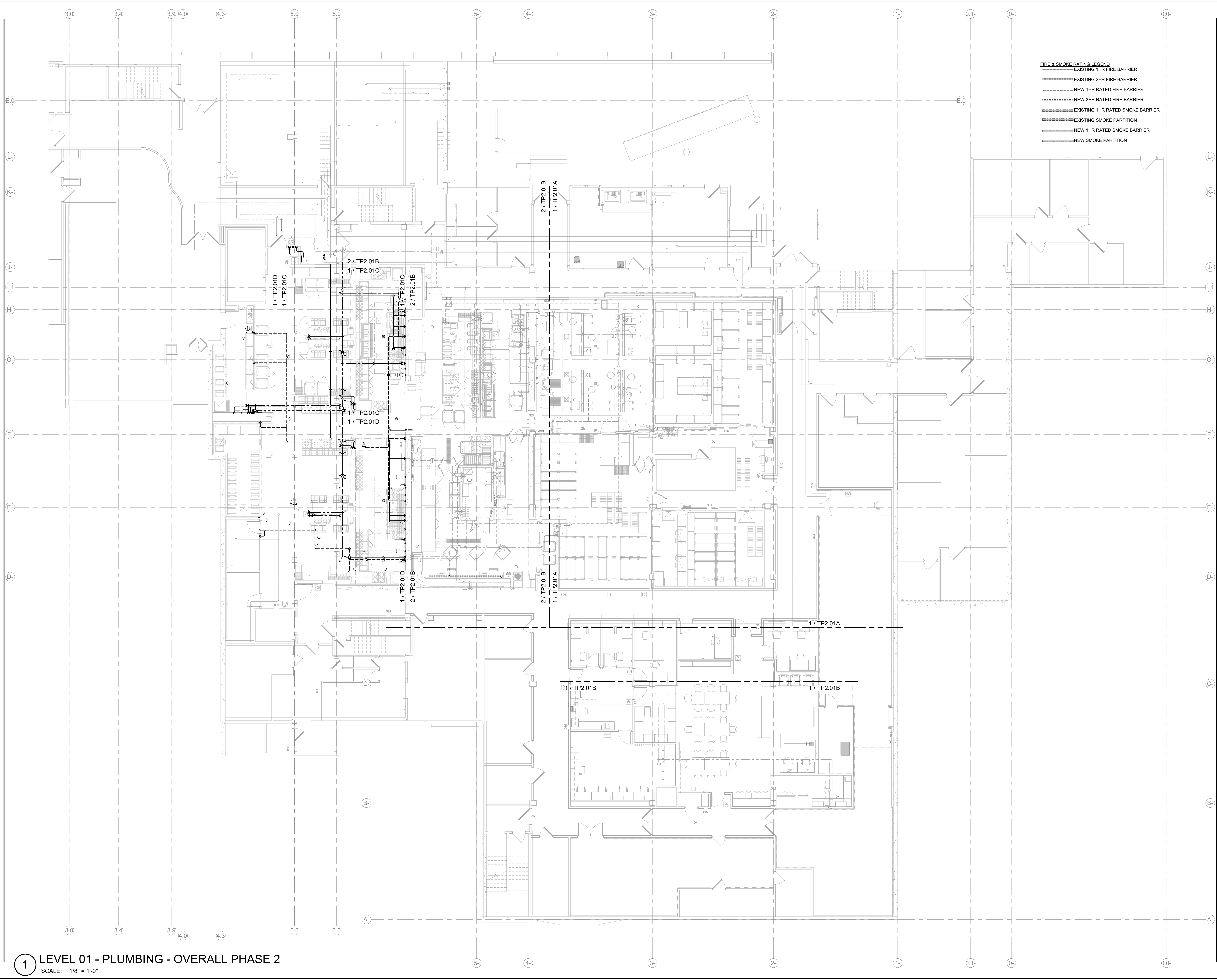
LEVEL 01 OVERALL FLOOR PLAN - PLUMBING

SHEET NUMBER

TP2.01

FIRE & SMOKE RATING LEGEND

- EXISTING 1HR FIRE BARRIER
- EXISTING 2HR FIRE BARRIER
- NEW 1HR RATED FIRE BARRIER
- NEW 2HR RATED FIRE BARRIER
- EXISTING 1HR RATED SMOKE BARRIER
- EXISTING SMOKE PARTITION
- NEW 1HR RATED SMOKE BARRIER
- NEW SMOKE PARTITION



1 LEVEL 01 - PLUMBING - OVERALL PHASE 2
 SCALE: 1/8" = 1'-0"

4/24/2026 3:10:08 PM Autodesk Docs\MultiCare - Good Samaritan Hospital Kitchen Expansion\PLUMB\MultiCare-Kitchen-P2-01

CONSULTANTS

- FOOD SERVICE**
INMAN FOOD SERVICES
 3807 Charlotte Avenue,
 Nashville, Tennessee 37209
- CIVIL**
AHBL
 1200 6th Ave #1620,
 Seattle, WA 98101
- STRUCTURAL**
PCS
 1011 Western Avenue, Suite 810
 Seattle, WA 98104
- CONTRACTOR**
SELLEN
 227 Westlake Ave,
 Seattle, WA 98109
- PLUMBING**
MACDONALD MILLER
 17930 International Blvd,
 Suite 120, SeaTac, WA 98159
- MECHANICAL**
MACDONALD MILLER
 17930 International Blvd,
 Suite 120, SeaTac, WA 98188
- ELECTRICAL**
EBD SERVICES
 14900 International Ave S #143
 Seattle, WA 98168
- PROJECT MANAGER**
TURNER & TOWNSEND
 920 Fifth Avenue,
 Seattle, WA 98104



MacDonald-Miller
FACILITY SOLUTIONS
 17930 Intl. Blvd. Suite. 120 SeaTac, WA 98188
 Phone: 206-763-9400 www.macmiller.com

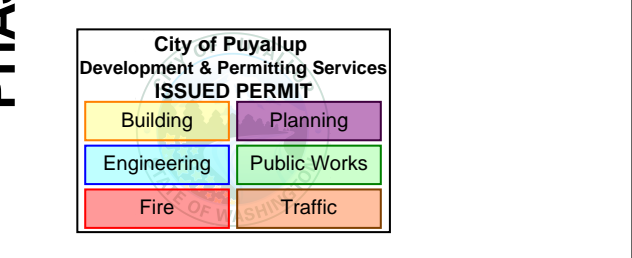


4/24/2026

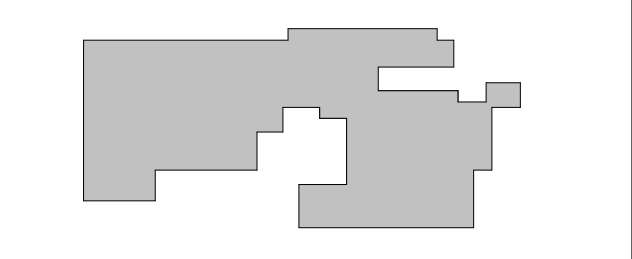
MultiCare
Good Samaritan
Hospital Kitchen
 401 15th Ave SE,
 Puyallup,
 WA 98372

MultiCare
Good Samaritan Hospital

MULTICARE



KEY PLAN



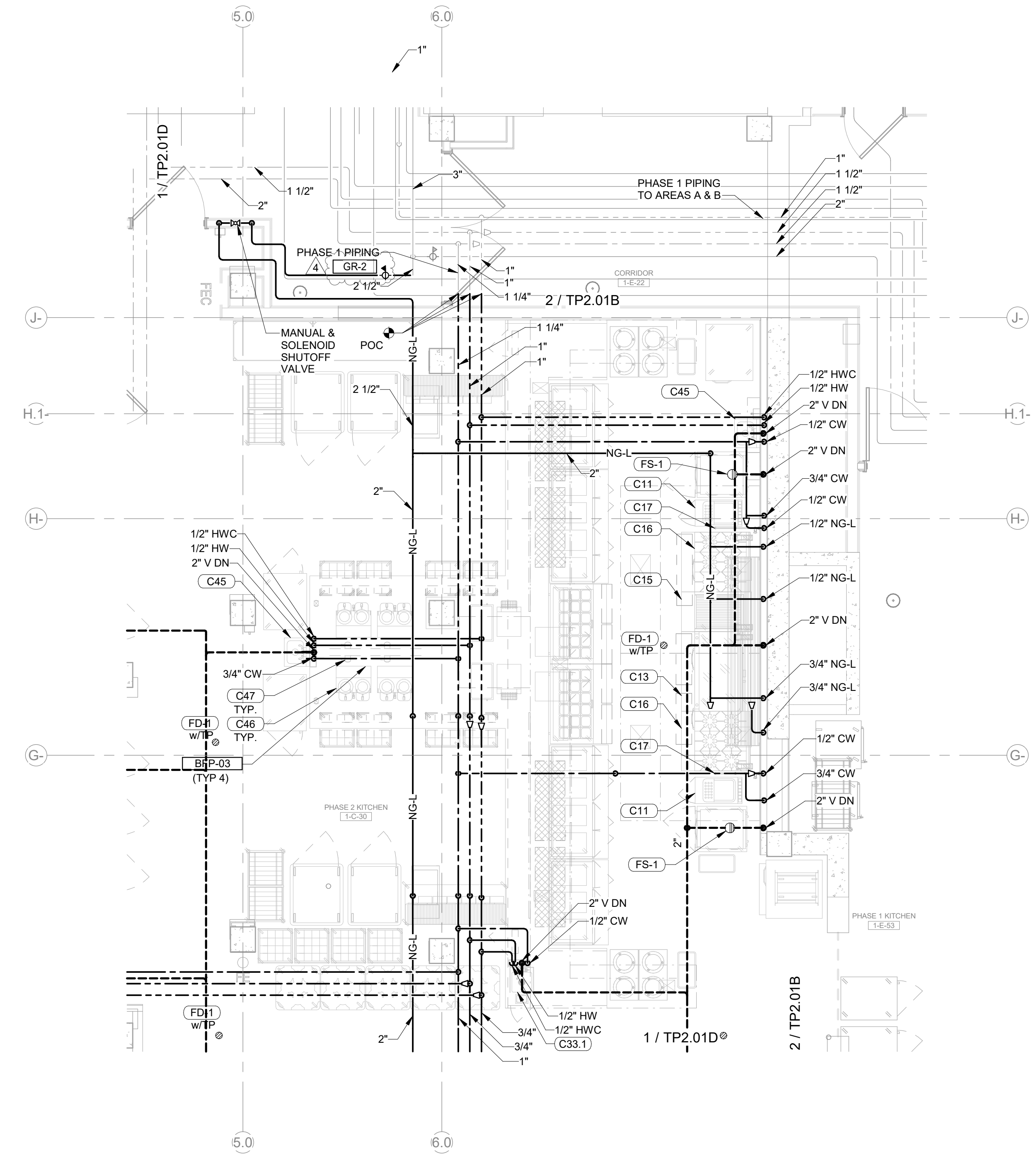
ISSUE CHART

4	PHASE 2 REV 1	04.24.2026
B	CoP/DCH	11.20.2025
ISSUE	ISSUE	04/24
Job Number	7725-4055	

TITLE
**LEVEL 01 FLOOR PLAN -
 PHASE 2 AREA C -
 PLUMBING**

SHEET NUMBER

TP2.01C



GENERAL NOTES:
 1. FOR ALL NEW AND EXISTING WASTE PIPING, PROVIDE DRIP PANS UNDER ALL OVERHEAD WASTE LINES RUNNING OVER THE KITCHEN, INCLUDING THE DRY STORAGE ROOM, WITH AN OVERFLOW DRAIN WITH AN OUTLET LOCATED IN A NORMALLY OCCUPIED ROOM OR AREA.

1 LEVEL 01 - PLUMBING - AREA C
 SCALE: 1/4" = 1'-0"



MacDonald-Miller
FACILITY SOLUTIONS
17930 Intl. Blvd, Suite, 120 SeaTac, WA 98188
Phone: 206-763-9400 www.macmiller.com

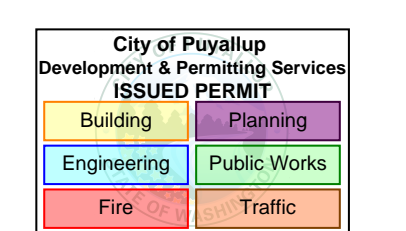


4/24/2026

MultiCare
Good Samaritan
Hospital Kitchen
401 15th Ave SE,
Puyallup,
WA 98372

MultiCare
Good Samaritan Hospital

MULTICARE



KEY PLAN

ISSUE CHART

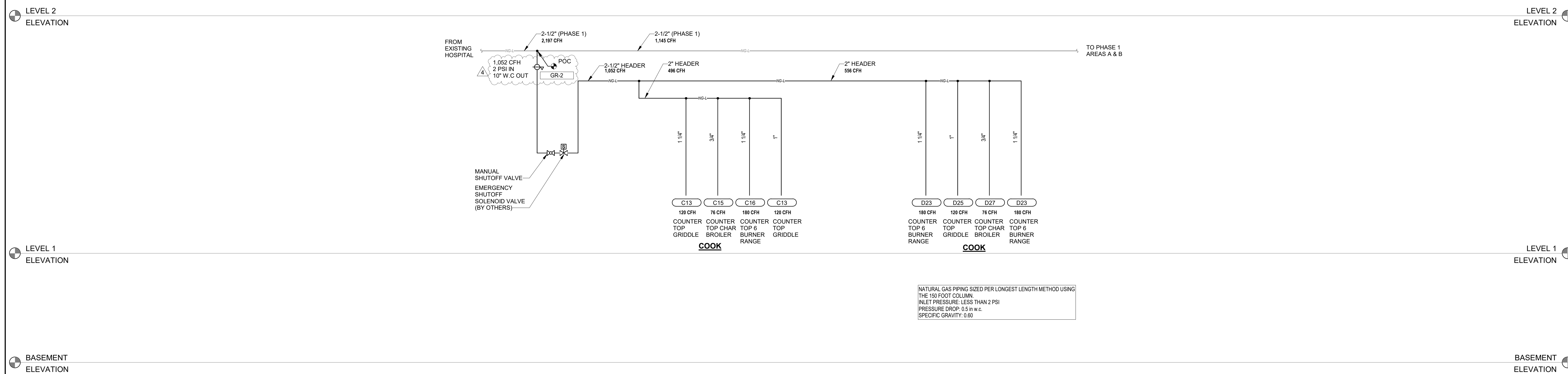
4	PHASE 2 REV 1	04/24/2026
ISSUE	SCALE	DATE
Job Number	7725-4055	
TITLE		

NATURAL GAS RISER

SHEET NUMBER

TP4.03B

PHASE 2 REV 1 04.24.2026



1 NATURAL GAS RISER - PHASE 2
SCALE: 1/8" = 1'-0"

CONSULTANTS

FOOD SERVICE
INMAN FOOD SERVICES
3807 Charlotte Avenue,
Nashville, Tennessee 37209

CIVIL
AHBL
1200 6th Ave #1620,
Seattle, WA 98101

STRUCTURAL
PCS
1011 Western Avenue, Suite 810
Seattle, WA 98104

CONTRACTOR
SELLEN
227 Westlake Ave,
Seattle, WA 98109

PLUMBING
MACDONALD MILLER
17930 International Blvd,
Suite 120, SeaTac, WA 98188

MECHANICAL
MACDONALD MILLER
17930 International Blvd,
Suite 120, SeaTac, WA 98188

ELECTRICAL
EBD SERVICES
14900 Interurban Ave S #143
Seattle, WA 98168

PROJECT MANAGER
TURNER & TOWNSEND
920 Fifth Avenue,
Seattle, WA, 98104



MacDonald-Miller
FACILITY SOLUTIONS
17930 Intl. Blvd, Suite, 120 SeaTac, WA 98188
Phone: 206-763-9400 www.macmiller.com

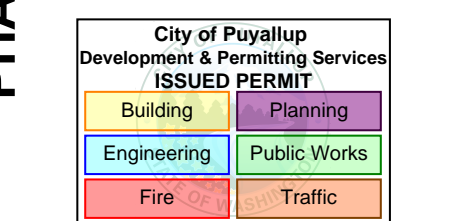


4/24/2026

MultiCare
Good Samaritan
Hospital Kitchen
401 15th Ave SE,
Puyallup,
WA 98372

MultiCare
Good Samaritan Hospital

MULTICARE



KEY PLAN

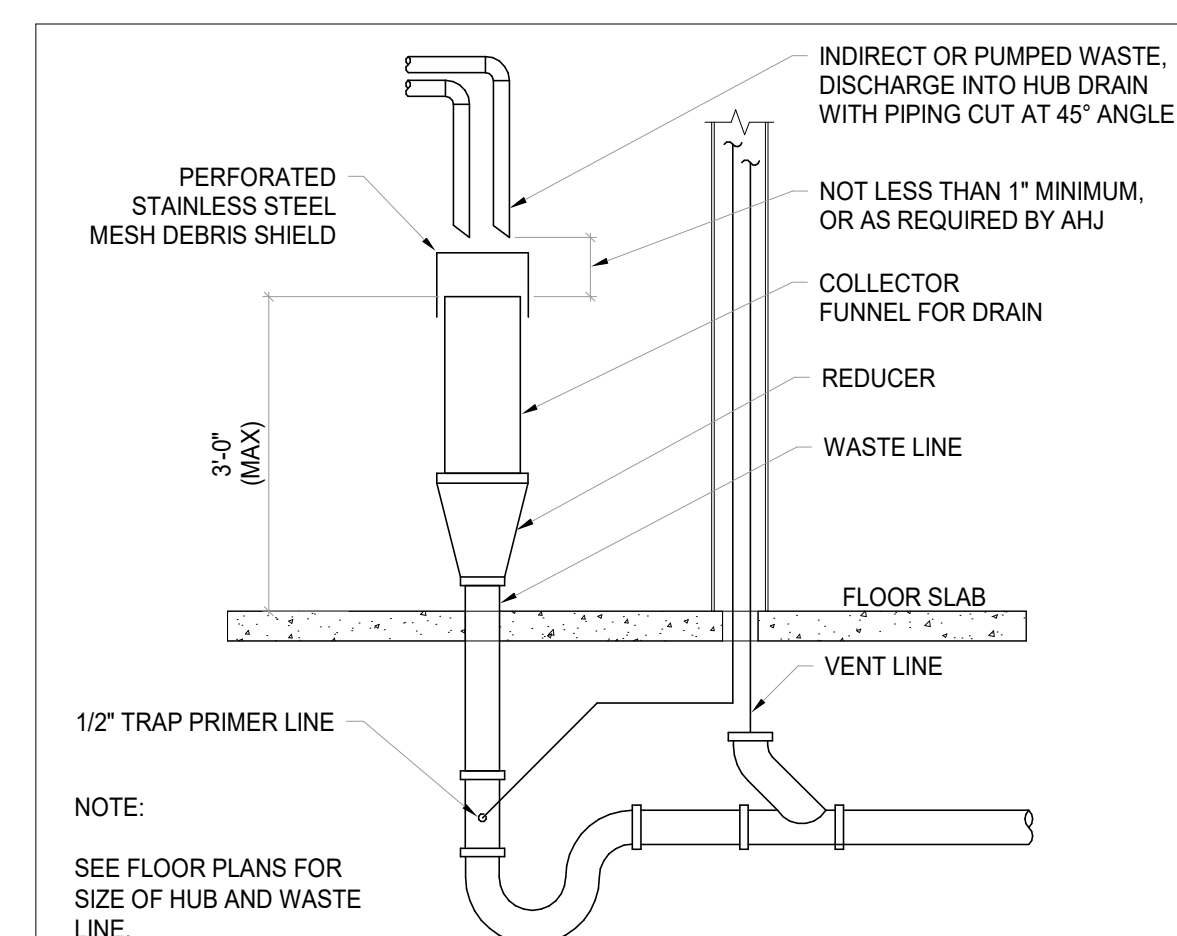
ISSUE CHART

ISSUE	DATE
Job Number	7725-4055
TITLE	

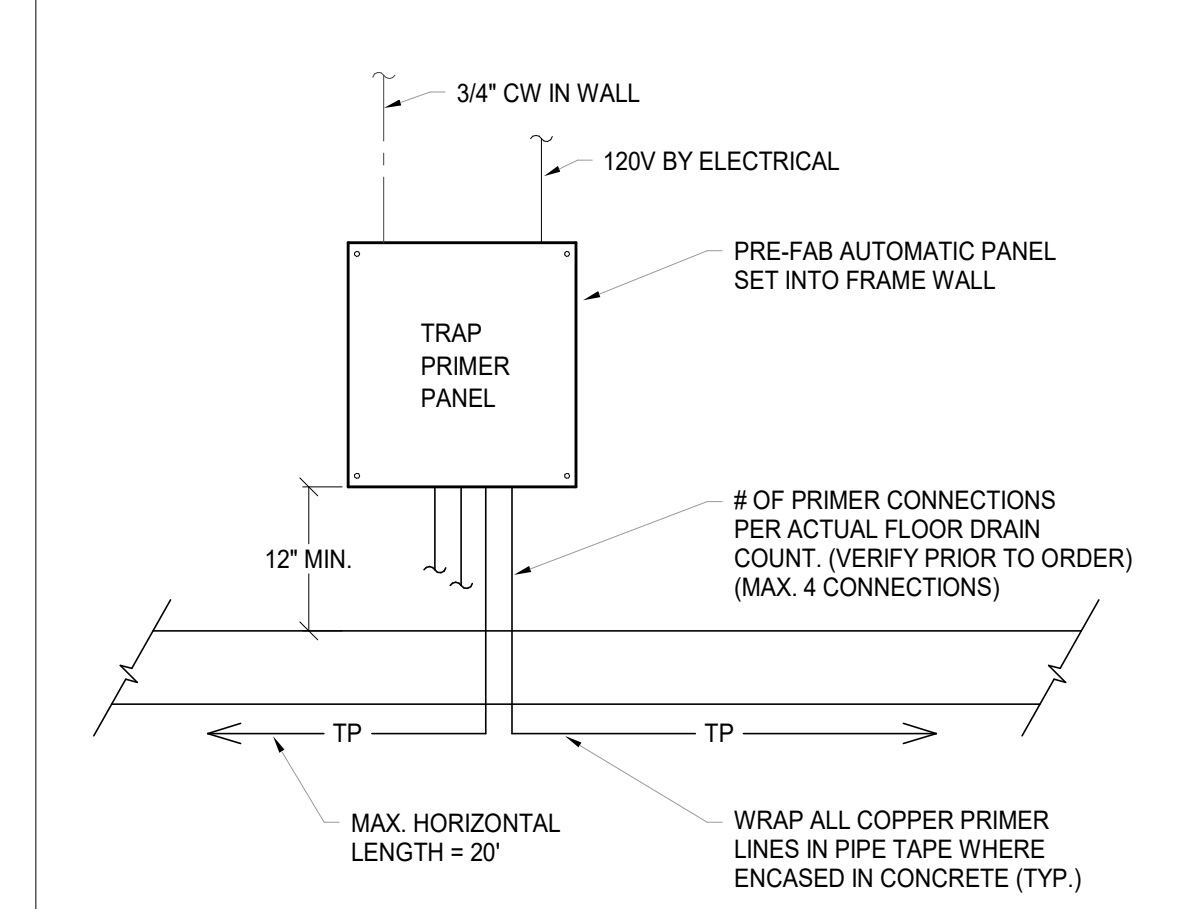
PLUMBING DETAILS

SHEET NUMBER

P6.01



OPEN HUB DRAIN WASTE PIPING
N.T.S.



ELECTRONIC TRAP PRIMER MANIFOLD
N.T.S.