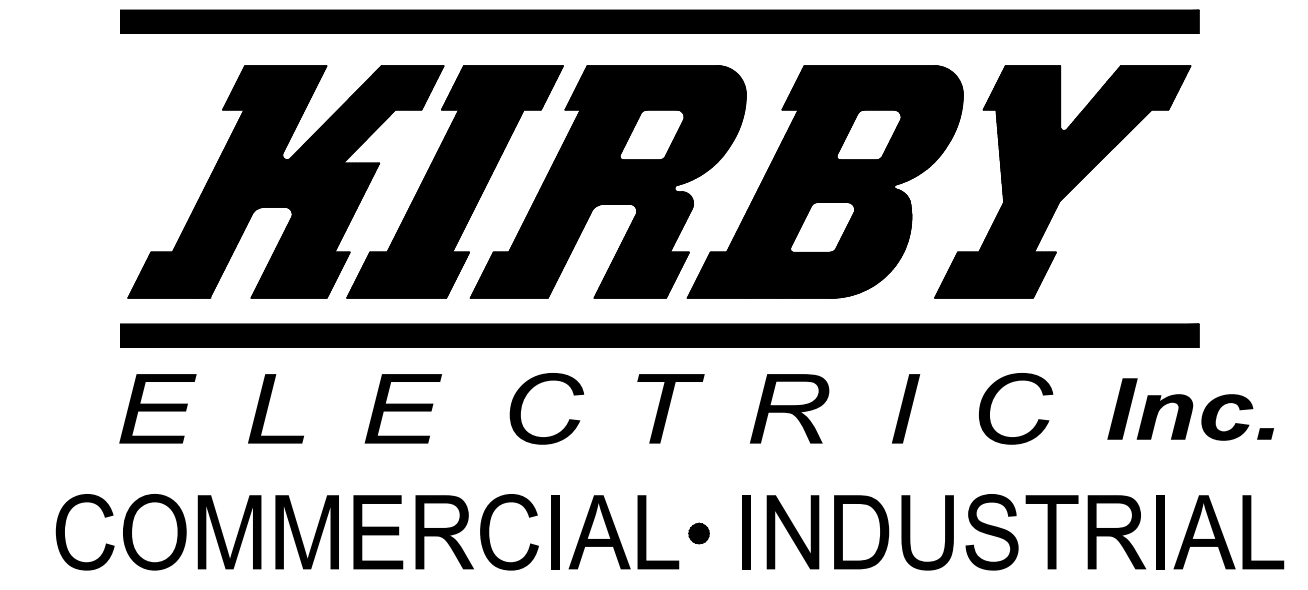


BRADLEY HEIGHTS

BLDG E

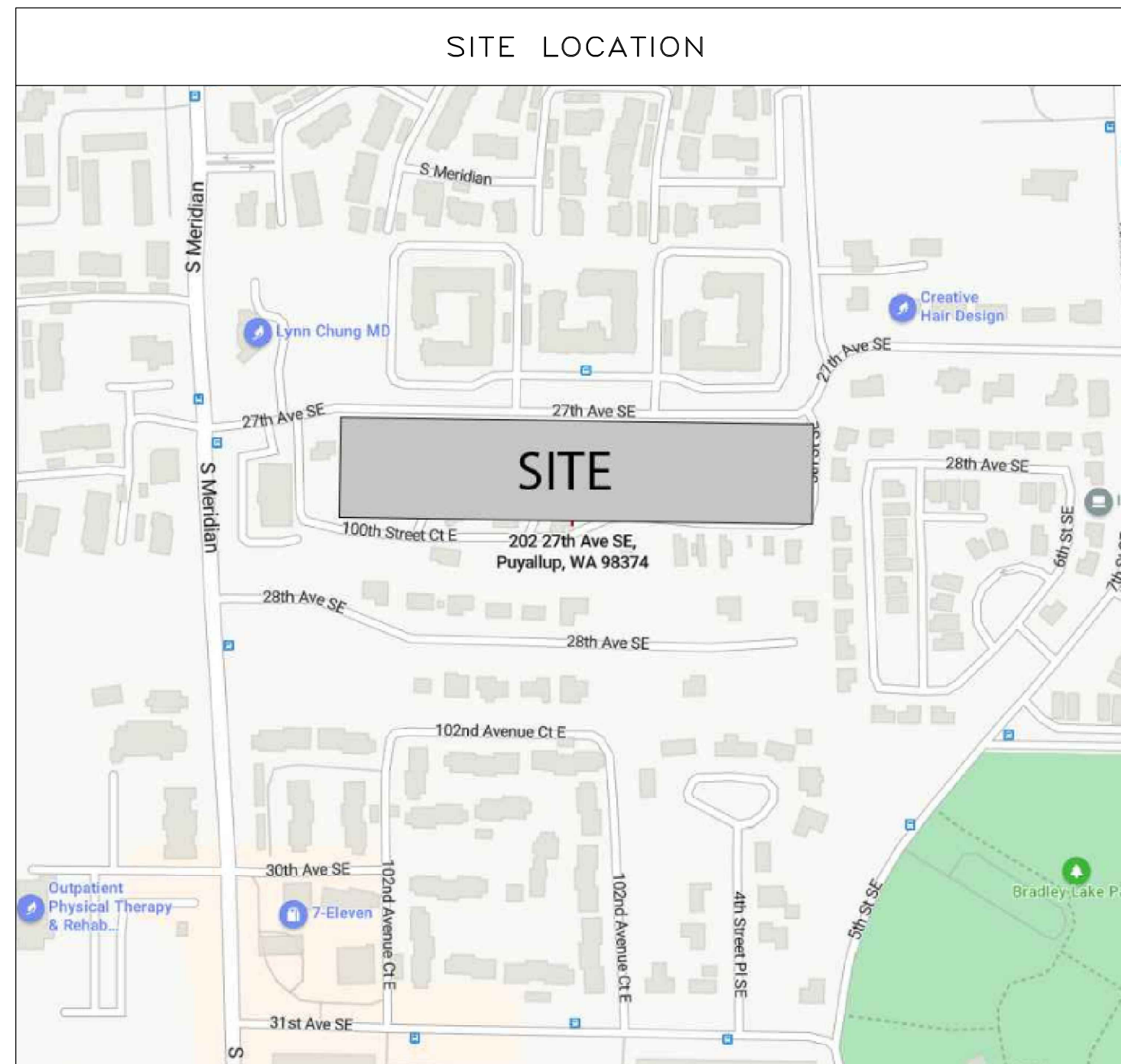
FIRE ALARM AND DETECTION SYSTEM



FIRE ALARM SHEET INDEX	
Sheet Number	Sheet Title
EFO.00	COVER SHEET
EFO.01	FIRE ALARM DETAILS
EFO.02	PANEL DETAILS
EFO.03	DEVICE DETAILS
EF1.01	ONE-LINE RISER DIAGRAM
EF2.01	FIRE ALARM PANEL CALCULATIONS
EF3.01	BASEMENT & LEVEL 1 FIRE ALARM PLAN
EF3.02	LEVEL 2 & 3 FIRE ALARM PLAN
EF3.03	ROOF FIRE ALARM PLAN

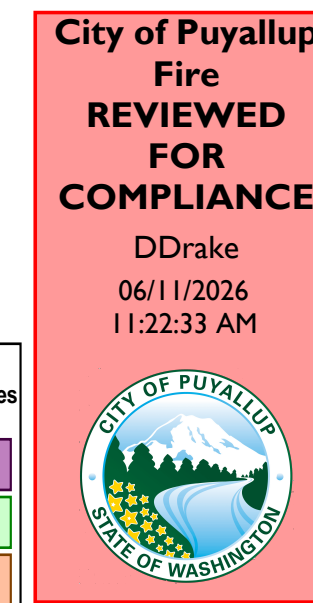
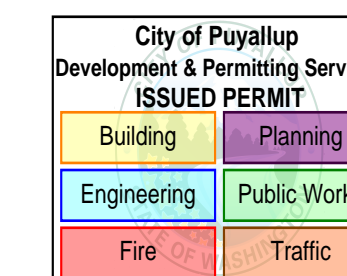
PROJECT SCOPE

- | | |
|---|---|
| <ol style="list-style-type: none"> 1. PROVIDE AND INSTALL NEW SILENT KNIGHT 680B FIRE ALARM CONTROL PANEL AND NEW HONEYWELL HPF-PS10 REMOTE POWER SUPPLY FOR OCCUPANT NOTIFICATION. 2. PROVIDE AND INSTALL 53 LOW FREQUENCY SOUNDER NOTIFICATION APPLIANCES. 3. PROVIDE AND INSTALL 5 LOW FREQUENCY SOUNDER STROBE NOTIFICATION APPLIANCES. 4. PROVIDE AND INSTALL 3 STROBE ONLY NOTIFICATION APPLIANCES. 5. PROVIDE AND INSTALL 13 HORN/STROBE NOTIFICATION APPLIANCES & 1 WATERFLOW BELL. 6. PROVIDE AND INSTALL 22 MANUAL PULL STATIONS. | <ol style="list-style-type: none"> 7. PROVIDE AND INSTALL 1 SMOKE DETECTOR FOR FACP & PS10. 8. PROVIDE AND INSTALL 2 DUAL-INPUT MODULES. 9. PROVIDE AND INSTALL 16 HEAT DETECTORS. 10. PROVIDE AND INSTALL A HONEYWELL HW-AV-LTE-M CELLULAR COMMUNICATOR. |
|---|---|



APPLICABLE CODES & STANDARDS
2022 NATIONAL FIRE ALARM & SIGNALING CODE NFPA72 2023 NATIONAL ELECTRICAL CODE (NEC) NFPA70 2021 INTERNATIONAL FIRE CODE (IFC) WITH WASHINGTON STATE AMENDMENTS 2021 INTERNATIONAL BUILDING CODE (IBC) WITH WASHINGTON STATE AMENDMENTS
OCCUPANCY & BUILDING
OCCUPANCY : R-2 USE : RESIDENTIAL BUILDING AREA : 35,927 S.F.

PROJECT CONTACTS		
PROJECT MANAGER	DENNIS RISHKOVOY	dennis@kirbyelectric.com
FOREMAN	---	---
DESIGNER	DANIEL KOPYTIN	danielko@kirbyelectric.com
DIRECTOR OF OPERATIONS	KYLE MCBARRON	kylem@kirbyelectric.com
TECHNICIAN SCHEDULING	ANDRACO DICKSON	andraco@kirbyelectric.com

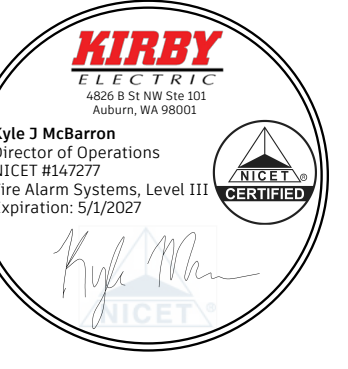


**City of Puyallup
Fire
REVIEWED
FOR
COMPLIANCE**

DDrake
06/11/2026
11:22:33 AM

THE APPROVED CONSTRUCTION PLANS AND ALL ENGINEERING MUST BE POSTED ON THE JOB AT ALL INSPECTIONS IN A VISIBLE AND READILY ACCESSIBLE LOCATION.

Approval of submitted plans is not an approval of omissions or oversight by this office or noncompliance with any applicable regulations of local government. The contractor is responsible for making sure that the building complies with all applicable building codes and regulations of the local government.



BRADLEY HEIGHTS
BUILDING E

27TH AVE SE AND 5TH ST SE, PUYALLUP, WA 98374

REVISIONS:
 (2026-05-14)
 INITIAL SET

SHEET NUMBER: EFO.00
 SHEET TITLE: COVER SHEET
 PLOT DATE: 05-14-26
 DESIGNED BY: D.S.K.
 JOB NUMBER: 25-058

DEVICE LEGEND				
SYMBOL	QUANTITY	MANUFACTURER	PART NO	DESCRIPTION
	1	SILENT KNIGHT	6808	INTELLIGENT FIRE ALARM CONTROL PANEL WITH COMMUNICATOR
	1	HONEYWELL	HPF-PS10	10.0 A, 120 VAC REMOTE CHARGER POWER SUPPLY IN A LOCKABLE, METAL ENCLOSURE
	1	HONEYWELL	HW-AV-LTE-M	DUAL-PATH COMMUNICATOR WITH ENCLOSURE, INCLUDES ANTENNA.
	2	SILENT KNIGHT	SK-MONITOR-2	DUAL MONITORING MODULE
	22	SILENT KNIGHT	SK-PULL-DA	DUAL ACTION PULL STATION
	1	SYSTEM SENSOR	SS-PHOTO WB300-6	WHITE, ADDRESSABLE PHOTOELECTRIC DETECTOR, STANDARD BASE
	16	SYSTEM SENSOR	SS-HEAT WB300-6	INTELLIGENT FIXED TEMPERATURE THERMAL DETECTOR, STANDARD BASE
	3	SYSTEM SENSOR	SWLED	STROBE, WALL, WHITE
	13	SYSTEM SENSOR	P2GRKLED	2-WIRE, COMPACT HORN STROBE, WALL, RED, OUTDOOR
	5	SYSTEM SENSOR	P2WH-LF	2-WIRE LOW FREQUENCY SOUNDER STROBE, HIGH CD, WHITE
	53	SYSTEM SENSOR	HW-LF	LOW FREQUENCY SOUNDER, WHITE
	1	SYSTEM SENSOR	SSM24-10	ALARM BELL 10" 24VDC, RED
	93	GENERIC	JUNCTION BOX	
	1	SPACE AGE ELECTRONICS	E120V-GT	HYBRID SURGE PROTECTION DEVICE
	1	SPACE AGE ELECTRONICS	SSU00685	FIRE ALARM DOCUMENT CABINET W/8GB USB DRIVE (ACE-11), RED WITH CUSTOM LOGO
N/A	2	POWER-SONIC	PS-12180F2	12V 18AH BATTERY FOR FACP
N/A	2	POWER-SONIC	PS-1280F2	12V 8AH BATTERY FOR POWER SUPPLY
ADDITIONAL ASSEMBLY COMPONENTS AND HARDWARE				
	1	HONEYWELL	HPF-PS10 MAIN BOARD	FIRE ALARM POWER SUPPLY MAIN BOARD
	1	SILENT KNIGHT	6808 MAIN BOARD	MAIN BOARD

GENERAL NOTES

- FIRE ALARM SYSTEM IS POWER LIMITED.
- ALL RACEWAYS MUST BE FREE OF MOISTURE.
- REFER TO DATA SHEETS FOR PROPER TYPE AND SIZES OF REQUIRED DEVICE MOUNTING ELECTRICAL BOXES.
- AC VOLTAGE IS NOT PERMITTED IN THE SAME RACEWAY AS FIRE ALARM WIRING.
- UNRELATED (NON-FIRE ALARM) WIRE SHALL NOT BE IN THE SAME RACEWAY AS FIRE ALARM WIRE.
- ALL CONTRACTOR FIELD WIRING MUST ENTER ALARM CONTROL PANEL BACKBOX FOLLOWING POWER-LIMITING AND NON-POWER-LIMITING WIRING REQUIREMENTS. REFER TO INSTALLATION INSTRUCTIONS FOR MORE INFORMATION.
- ZONE CIRCUITS AND SIGNAL CIRCUITS ARE ELECTRICALLY SUPERVISED. BRANCH CIRCUITS SHALL BE LOOPED TO MAINTAIN INTEGRITY OF SUPERVISED CIRCUITS. T-TAPPING OF ZONE AND SIGNAL CIRCUITS IS NOT PERMITTED.
- REFER TO FACP MODULE DIAGRAMS, INCLUDED WITH FACP, FOR SPECIFICATIONS AND INFORMATION ON INDIVIDUAL PANEL MODULES.
- ALL FIRE ALARM WIRING SHALL TEST FREE OF OPENS, SHORTS, AND GROUNDS.
- ALL WIRING SHALL BE LABELED AND TAGGED.
- ALL WIRING SHALL MEET ALL APPLICABLE NATIONAL ELECTRICAL CODE ARTICLES FOR FIRE ALARM AND LOW-VOLTAGE WIRING.
- DO NOT USE FIRE ALARM CABINET AS TERMINAL CABINET.

FIRE ALARM SYSTEM DESIGNED BY: KIRBY ELECTRIC INC. AUBURN, WA 253-859-2000

FIRE ALARM SYSTEM INSTALLED BY: KIRBY ELECTRIC INC. AUBURN, WA

EQUIP. FOR FIRE ALARM SYSTEM SUPPLIED BY: SILENT KNIGHT INC. NORTHFORD, CT

WA STATE ELECTRICAL CONTRACTORS NUMBER: KIRBYEI809MZ

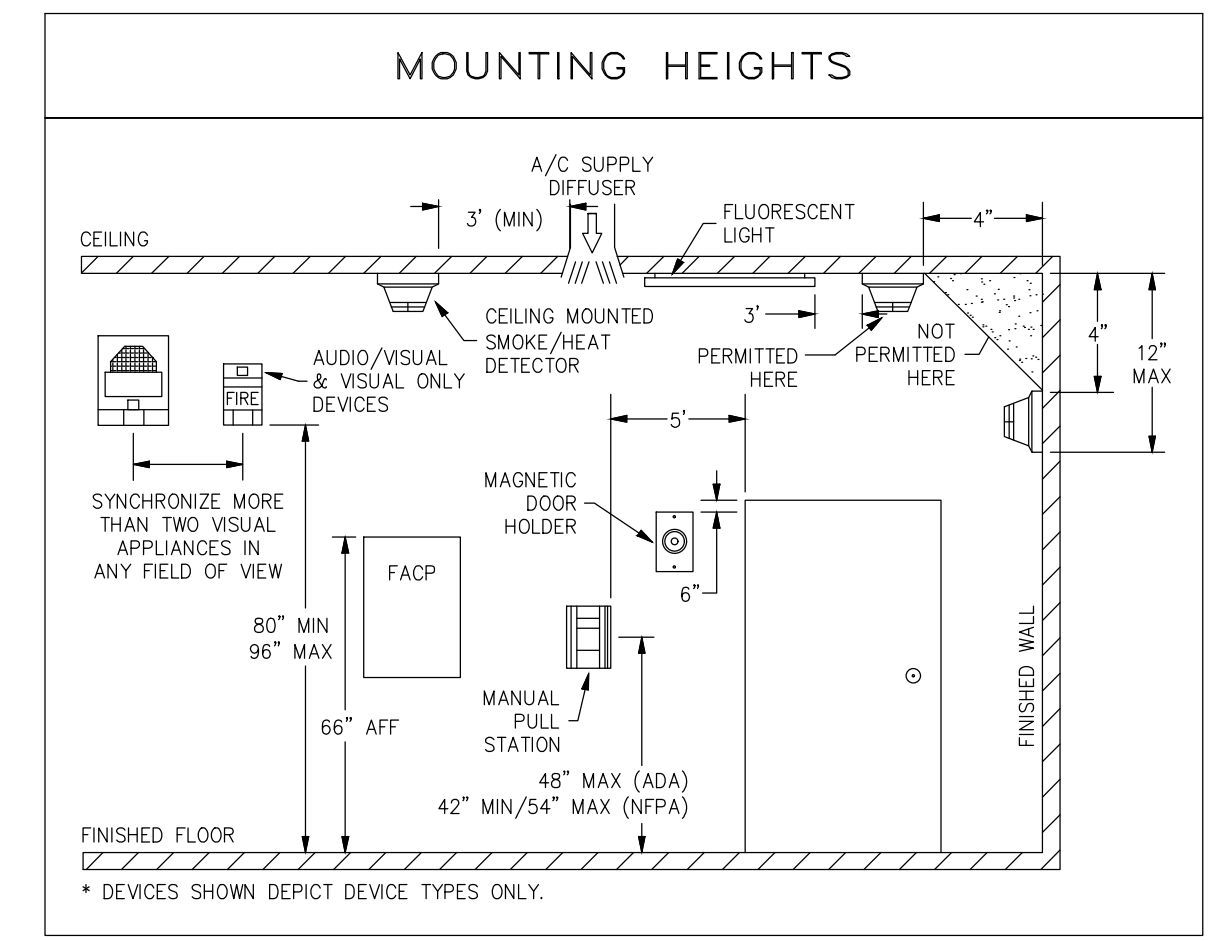
* THESE DRAWINGS DO NOT SUPERSEDE THE CONTRACT DRAWINGS AND SPECIFICATIONS. THEY ARE INTENDED AS A SUPPLEMENT ONLY AND MUST BE USED IN CONJUNCTION WITH THE CONTRACT DOCUMENTS. THEY DO NOT MODIFY THE CONTRACTORS OBLIGATIONS TO CONFORM TO THE PROJECTS ORIGINAL DESIGN CRITERIA.

CODE INFORMATION

BUILDING CODE
2021 INTERNATIONAL BUILDING CODE (B) WITH WASHINGTON STATE AMENDMENTS
2020 WASHINGTON STATE ENERGY CODE

NATIONAL FIRE PROTECTION ASSOCIATION
2022 NATIONAL FIRE ALARM CODE (NFPA 72)
2023 NATIONAL ELECTRICAL CODE (NFPA 70)
2021 INTERNATIONAL FIRE CODE (IFC) WITH WASHINGTON STATE AMENDMENTS

OCCUPANCY CLASSIFICATIONS
- R-2



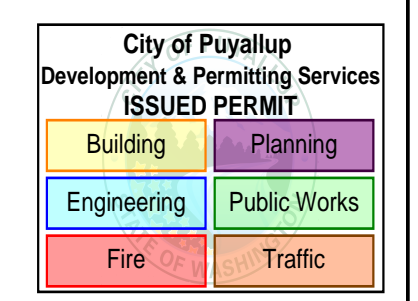
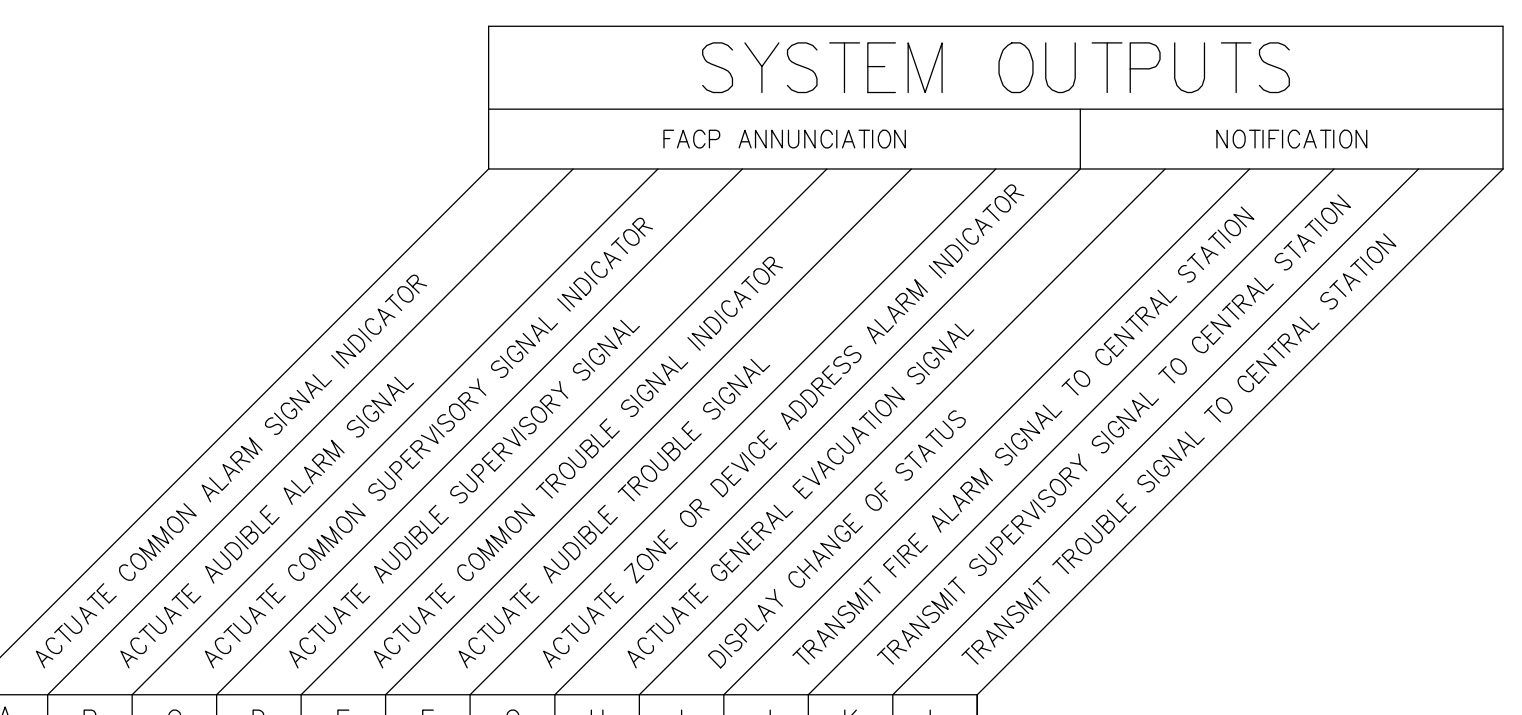
DEVICE HEIGHT SCHEDULE

DEVICE	HEIGHT
OUTDOOR HORN/STROBE	96"
HORN/STROBE	80"
PULL STATION	48"
FIRE ALARM CONTROL PANEL	60"
POWER SUPPLY	60"
BELL	96"
ANNUNCIATOR	60"

SYSTEM INPUTS

	A	B	C	D	E	F	G	H	I	J	K	L		
1 FIRE ALARM SYSTEM AC POWER FAILURE					●	●							●	1
2 FIRE ALARM SYSTEM LOW BATTERY					●	●							●	2
3 OPEN CIRCUIT					●	●							●	3
4 GROUND FAULT					●	●							●	4
5 NOTIFICATION APPLIANCE CIRCUIT SHORT					●	●							●	5
6 BUILDING MANUAL PULL STATIONS	●	●					●	●	●	●				6
7 AREA HEAT DETECTORS	●	●					●	●	●	●				7
8 AREA SMOKE DETECTORS	●	●					●	●	●	●				8
9 HOOD OR ROOM FIRE SUPPRESSION SYSTEM ALARM	●	●					●	●	●	●				9
10 SPRINKLER TAMPER SWITCH			●	●			●					●		10
11 SPRINKLER WATER FLOW IN BUILDING	●	●					●	●	●	●				11

FIRE ALARM SYSTEM MATRIX
SCALE: N.T.S.



BRADLEY HEIGHTS BUILDING E

27TH AVE SE AND 5TH ST SE, PUYALLUP, WA 98374

REVISIONS:
 (2026-05-14) INITIAL SET

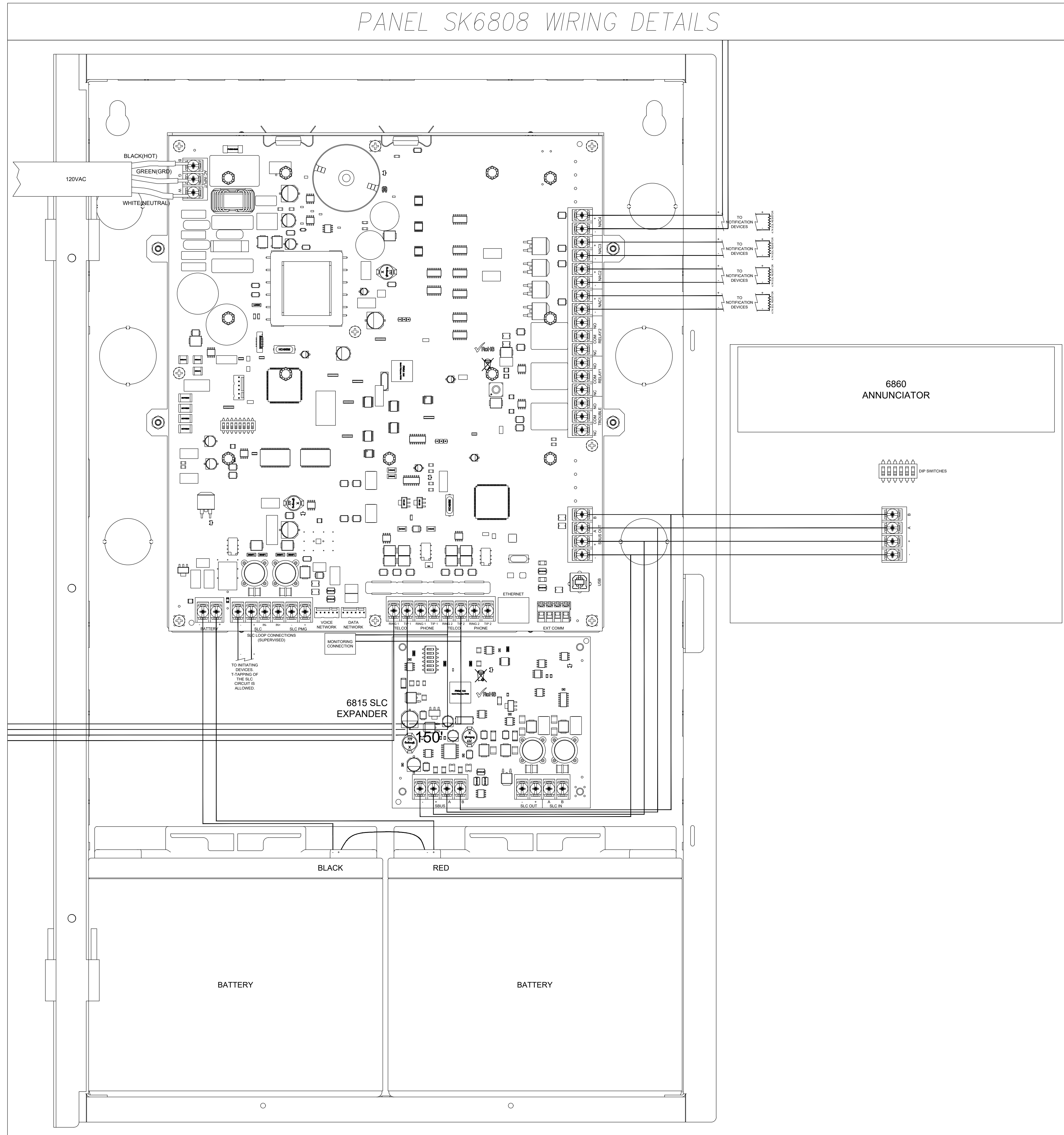
SHEET NUMBER: EFO.01

SHEET TITLE:
FIRE ALARM
DETAILS

PLOT DATE: 05-14-26
 DESIGNED BY: D.S.K.
 JOB NUMBER: 25-058



PANEL SK6808 WIRING DETAILS



City of Puyallup
Development & Permitting Services
ISSUED PERMIT

Building	Planning
Engineering	Public Works
Fire	Traffic



BRADLEY HEIGHTS
BUILDING E

27TH AVE SE AND 5TH ST SE, PUYALLUP, WA 98374

REVISIONS:
 (2026-05-14)
 INITIAL SET

SHEET NUMBER: EF0.02

SHEET TITLE:
 PANEL DETAILS

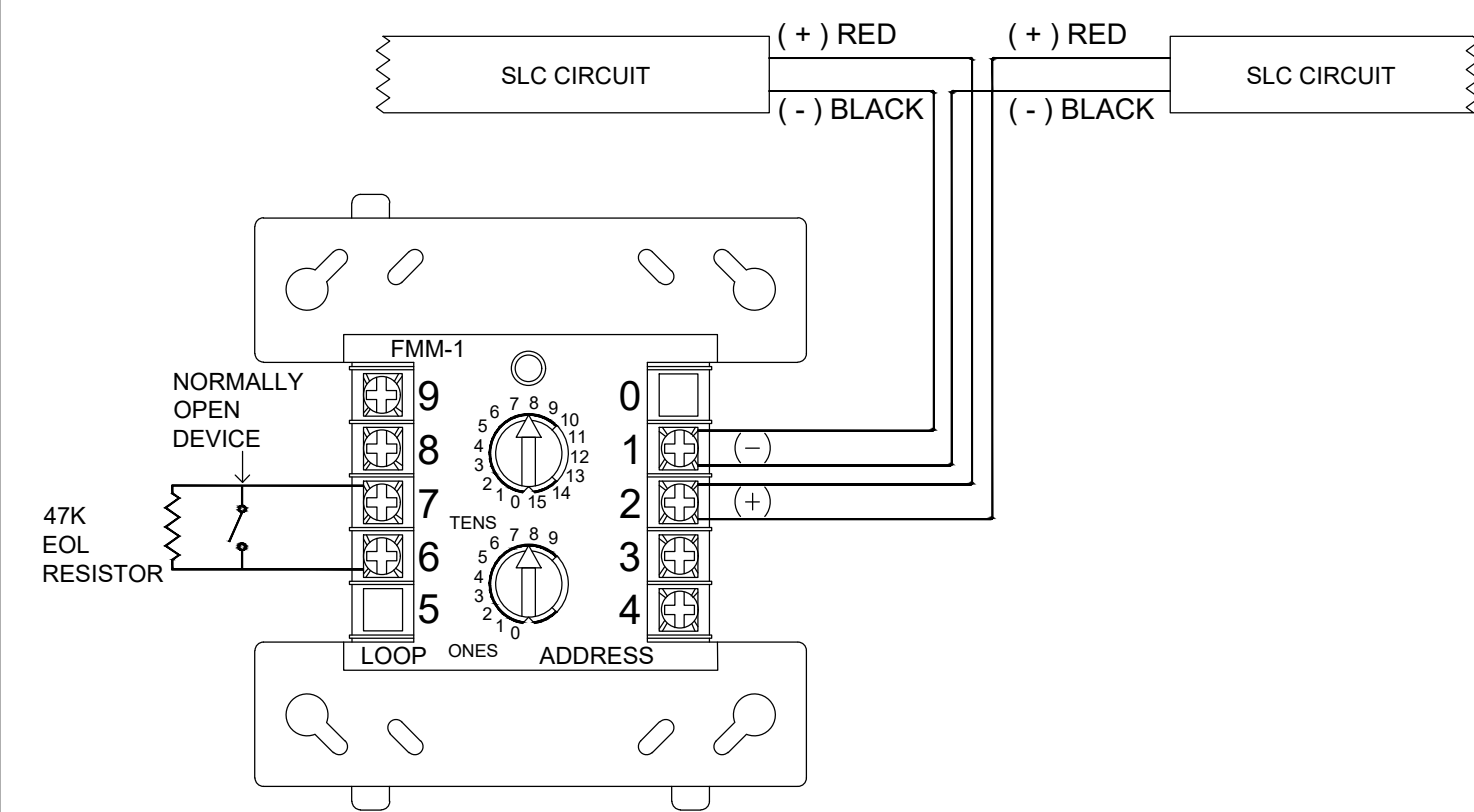
PLOT DATE: 05-14-26

DESIGNED BY: D.S.K.

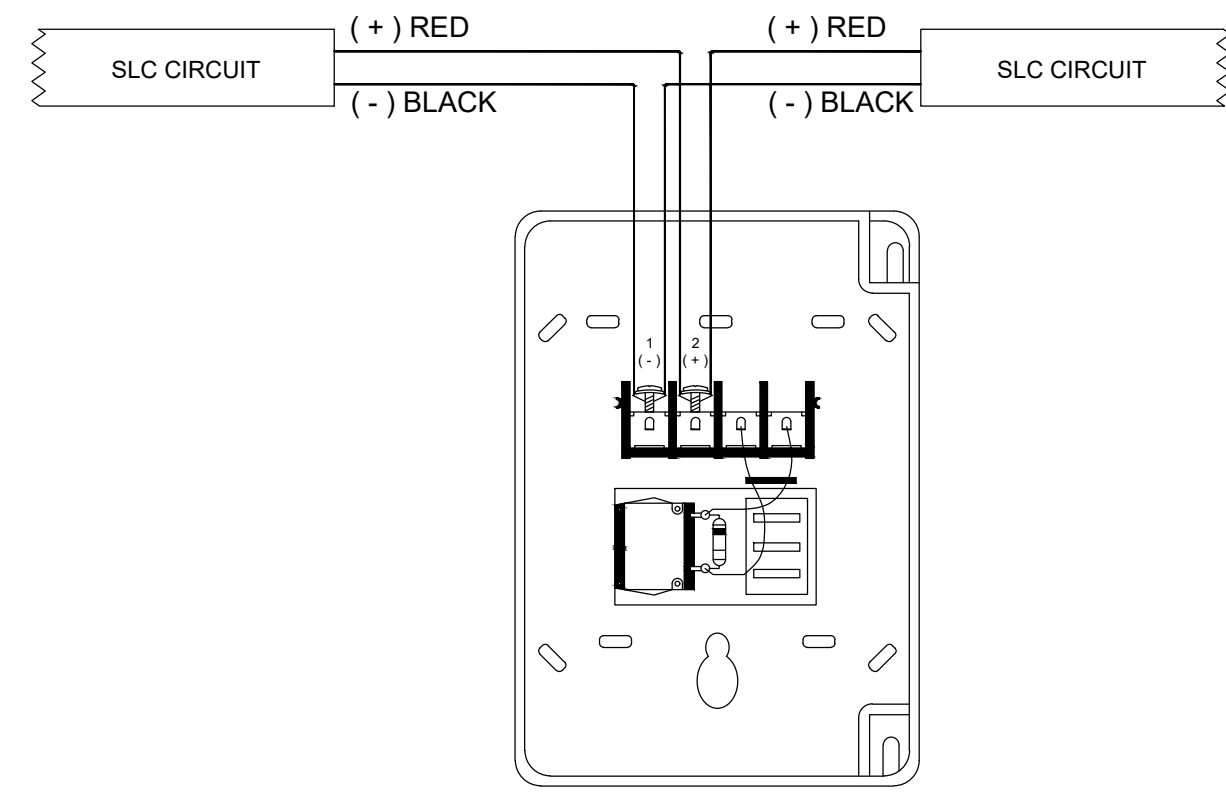
JOB NUMBER: 25-058

KIRBY
 4826 7th St NW • Suite 101 • Auburn, WA 98001
 P: (253) 859-2000 • F: (253) 859-2363
 www.kirbyelectric.com

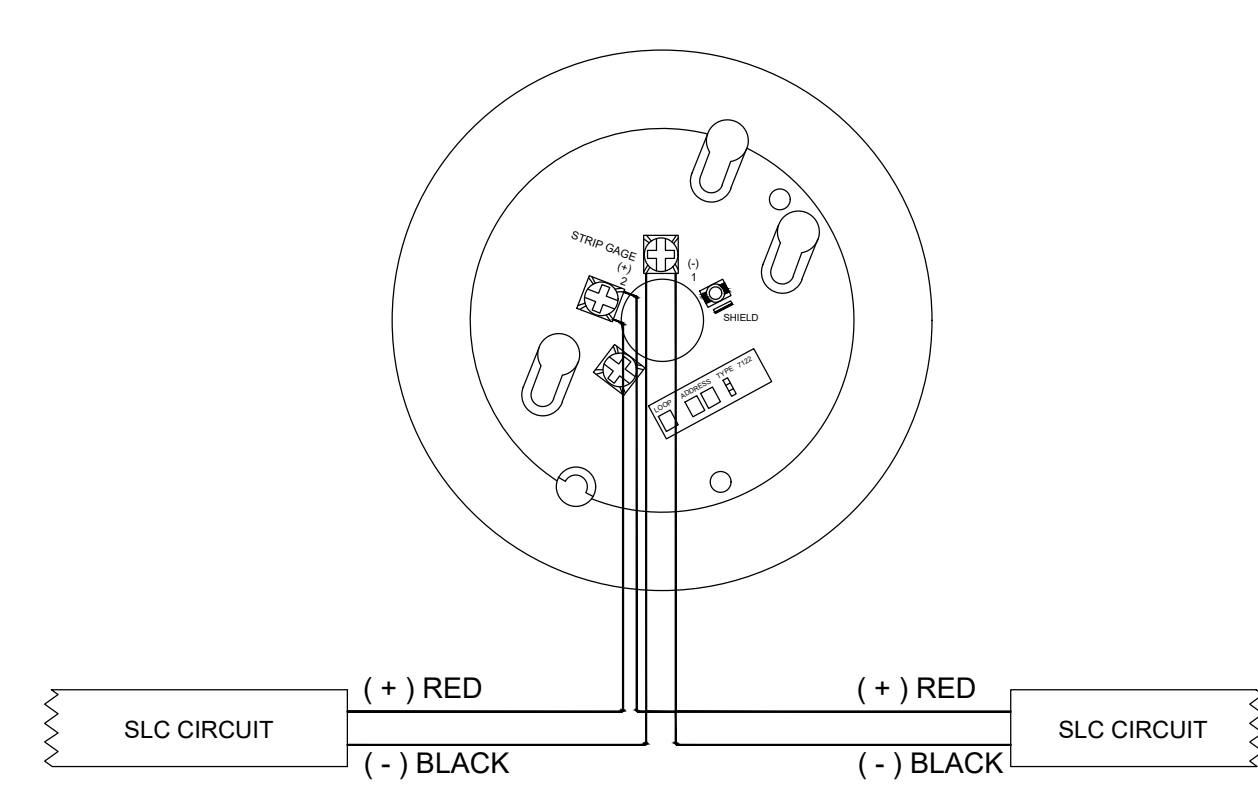
INPUT MODULE



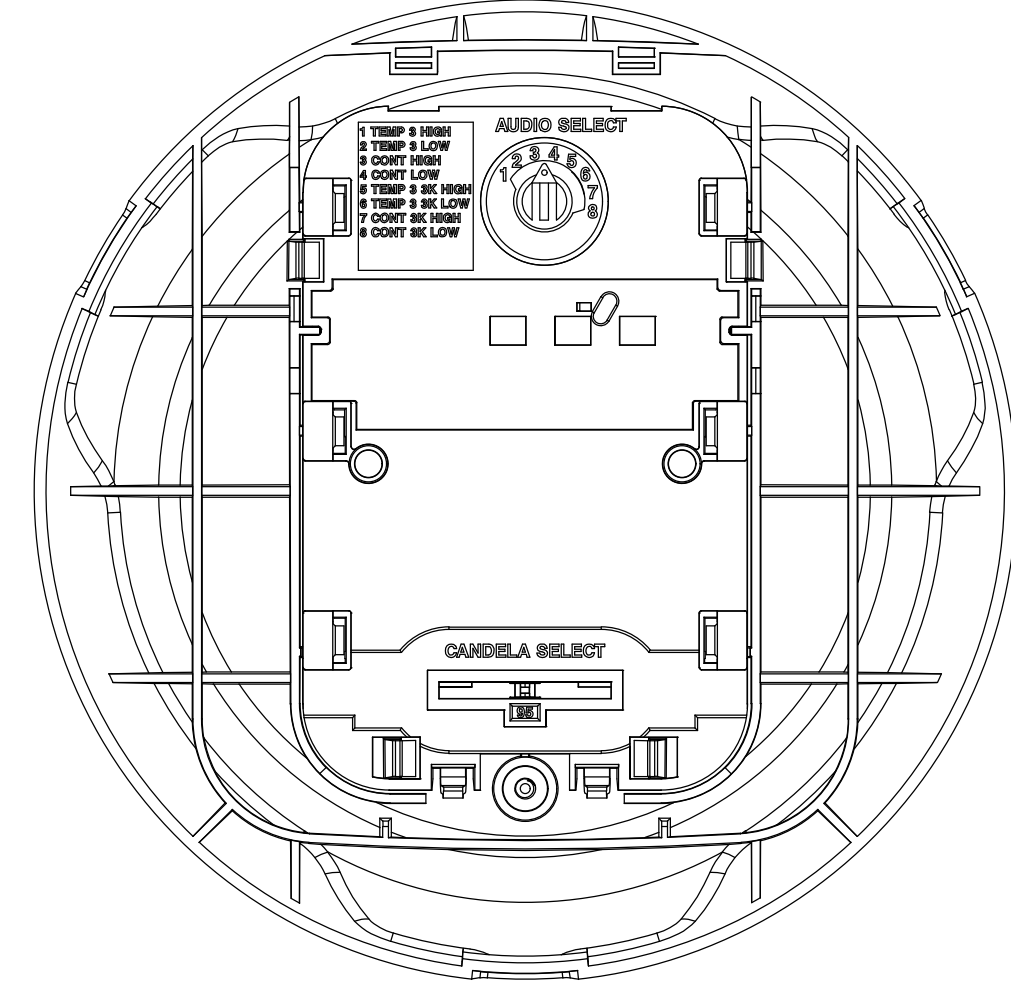
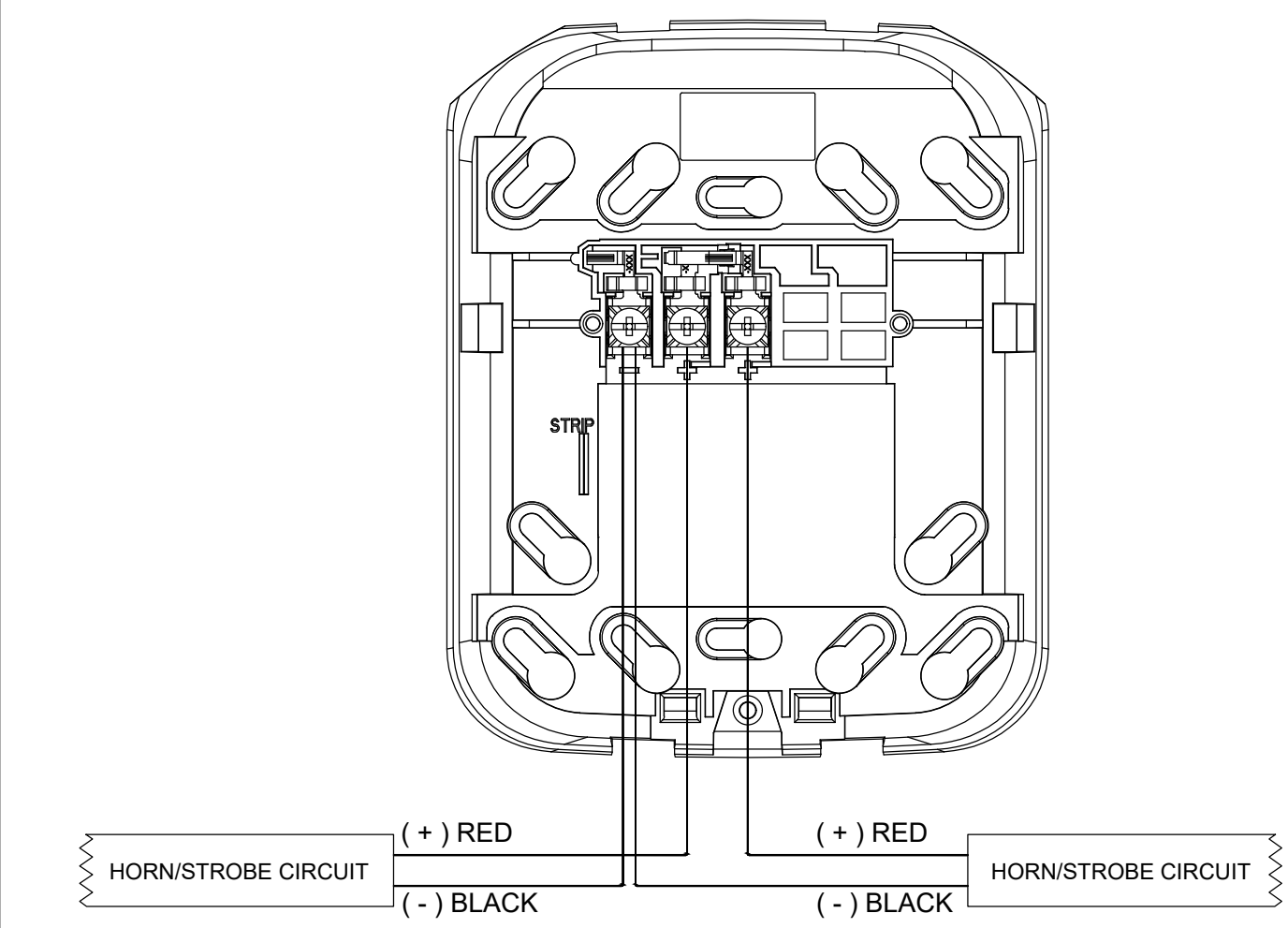
PULL STATION



SMOKE DETECTOR

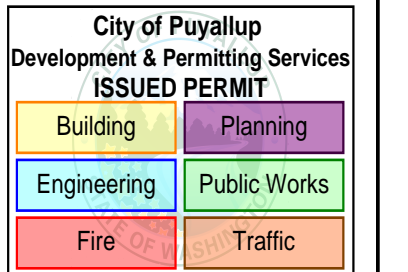


HORN/STROBE



BACKPLATE

DEVICE



BRADLEY HEIGHTS
BUILDING E

27TH AVE SE AND 5TH ST SE, PUYALLUP, WA 98374

REVISIONS:
 (2026-05-14)
 INITIAL SET

SHEET NUMBER: EF0.03

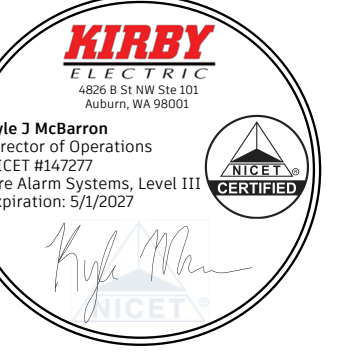
SHEET TITLE:
 DEVICE DETAILS

PLOT DATE: 05-14-26

DESIGNED BY: D.S.K.

JOB NUMBER: 25-058

KIRBY
 4826 15th St NW • Suite 101 • Auburn, WA 98001
 P: (253) 859-2000 • F: (253) 859-2363
 www.kirbyelectric.com

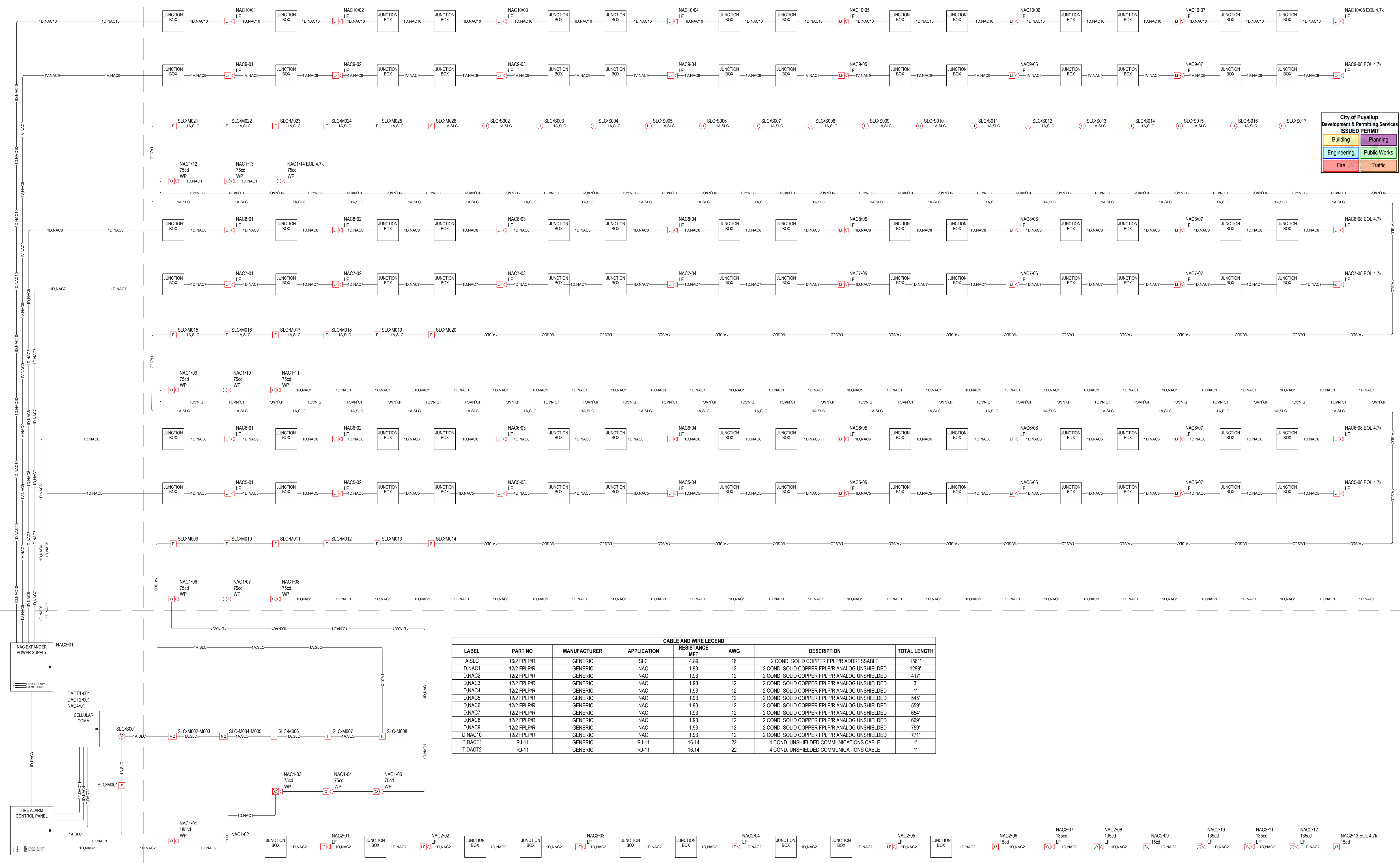


BRADLEY HEIGHTS BUILDING E

27TH AVE SE AND 5TH ST SE, PUYALLUP, WA 98374

City of Puyallup
 Development & Permitting Services
ISSUED PERMIT

Building	Planning
Engineering	Public Works
Fire	Traffic



CABLE AND WIRE LEGEND

LABEL	PART NO	MANUFACTURER	APPLICATION	RESISTANCE MF1	AWG	DESCRIPTION	TOTAL LENGTH
A.SLC	16/2 FPLPR	GENERIC	SLC	4.89	16	2 COND. SOLID COPPER FPLPR ADDRESSABLE	1581'
D.NAC1	12/2 FPLPR	GENERIC	NAC	1.93	12	2 COND. SOLID COPPER FPLPR ANALOG UNSHIELDED	1299'
D.NAC2	12/2 FPLPR	GENERIC	NAC	1.93	12	2 COND. SOLID COPPER FPLPR ANALOG UNSHIELDED	417'
D.NAC3	12/2 FPLPR	GENERIC	NAC	1.93	12	2 COND. SOLID COPPER FPLPR ANALOG UNSHIELDED	3'
D.NAC4	12/2 FPLPR	GENERIC	NAC	1.93	12	2 COND. SOLID COPPER FPLPR ANALOG UNSHIELDED	1'
D.NAC5	12/2 FPLPR	GENERIC	NAC	1.93	12	2 COND. SOLID COPPER FPLPR ANALOG UNSHIELDED	545'
D.NAC6	12/2 FPLPR	GENERIC	NAC	1.93	12	2 COND. SOLID COPPER FPLPR ANALOG UNSHIELDED	559'
D.NAC7	12/2 FPLPR	GENERIC	NAC	1.93	12	2 COND. SOLID COPPER FPLPR ANALOG UNSHIELDED	654'
D.NAC8	12/2 FPLPR	GENERIC	NAC	1.93	12	2 COND. SOLID COPPER FPLPR ANALOG UNSHIELDED	669'
D.NAC9	12/2 FPLPR	GENERIC	NAC	1.93	12	2 COND. SOLID COPPER FPLPR ANALOG UNSHIELDED	759'
D.NAC10	12/2 FPLPR	GENERIC	NAC	1.93	12	2 COND. SOLID COPPER FPLPR ANALOG UNSHIELDED	771'
T.DACT1	RJ-11	GENERIC	RJ-11	16.14	22	4 COND. UNSHIELDED COMMUNICATIONS CABLE	1'
T.DACT2	RJ-11	GENERIC	RJ-11	16.14	22	4 COND. UNSHIELDED COMMUNICATIONS CABLE	1'

REVISIONS:
 (2026-05-14)
 INITIAL SET

SHEET NUMBER: EF1.01

SHEET TITLE:
 ONE-LINE RISER DIAGRAM

PLOT DATE: 05-14-26

DESIGNED BY: D.S.K.

JOB NUMBER: 25-058

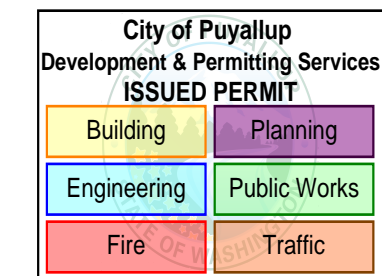
PANEL LOAD SUMMARY								STANDBY CURRENT (AMPS)		ALARM CURRENT (AMPS)					
PANEL COMPONENT SUMMARY		QTY	PART NO	DESCRIPTION				CURRENT DRAW (A)	TOTAL (A)	CURRENT DRAW (A)	TOTAL				
		1	6808 Main Board	Main Board				1 x 0.19	= 0.19	1 x 0.25	= 0.25				
CIRCUIT SUMMARY		CIRCUIT													
				DACT1			1 x 0	= 0	1 x 0	= 0					
				DACT2			1 x 0	= 0	1 x 0	= 0					
				NAC1			1 x 0	= 0	1 x 1.2875	= 1.2875					
				NAC2			1 x 0	= 0	1 x 2.364	= 2.364					
				NAC3			1 x 0.014	= 0.014	1 x 0.014	= 0.014					
				NAC4			1 x 0.06	= 0.06	1 x 0.2	= 0.2					
				SLC			1 x 0.0126	= 0.0126	1 x 0.0857	= 0.0857					
				TOTAL STANDBY CURRENT				0.2766		TOTAL ALARM CURRENT		4.2012			
CIRCUIT DETAILS AND CALCULATIONS								STANDBY CURRENT		ALARM CURRENT		POINT-TO-POINT VOLTAGE DROP CALCULATION SUMMARY			
SOURCE	CIRCUIT	AWG	SYMBOL	QTY	PART NO	DEVICE SETTING	CIRCUIT LENGTH	CIRCUIT RESISTANCE (Ω/ft)	CURRENT DRAW (A)	TOTAL (A)	CURRENT DRAW (A)	TOTAL (A)	STARTING CALCULATION VOLTAGE	END OF LINE VOLTAGE	VOLTAGE DROP
6808 Main Board	NAC1	12		12	P2GRKLED	75cd	1299'	0.00193	12 x 0	= 0	12 x 0.087	= 1.044	20.4v	17.27v	3.13v
				1	P2GRKLED	185cd			1 x 0	= 0	1 x 0.19	= -0.19			
				1	SSM24-10				1 x 0	= 0	1 x 0.0535	= -0.0535			
	NAC2	12		5	HW-LF		417'	0.00193	5 x 0	= 0	5 x 0.166	= -0.83	20.4v	17.89v	2.51v
				5	P2WH-LF	135cd			5 x 0	= 0	5 x 0.296	= 1.48			
				3	SWLED	15cd			3 x 0	= 0	3 x 0.018	= 0.054			
	NAC3	12		1	HPF-PS10		3'	0.00193	1 x 0.014	= 0.014	1 x 0.014	= 0.014	20.4v	20.4v	0v
	NAC4	12		1	HW-AV-LTE-M		1'	0.00193	1 x 0.06	= 0.06	1 x 0.2	= 0.2	20.4v	20.4v	0v
	SLC	16		2	SK-MONITOR-2		1561'	0.00489	2 x 0.00075	= 0.0015	2 x 0.00075	= 0.0015			
				22	SK-PULL-DA				22 x 0.00035	= 0.0077	22 x 0.00035	= 0.0077			
			16	SS-HEAT WB300-6		16 x 0.0002			= 0.0032	16 x 0.0045	= 0.072				
			1	SS-PHOTO WB300-6		1 x 0.0002			= 0.0002	1 x 0.0045	= 0.0045				
SECONDARY POWER SOURCE REQUIREMENTS															
						REQUIRED STANDBY TIME = 24 HOURS									
						REQUIRED ALARM TIME = 5 MINUTES									
						SECONDARY STANDBY LOAD						0.2766 x 24 = 6.64 AH			
						SECONDARY ALARM LOAD						4.2012 x 0.08 = 0.35 AH			
						STANDBY AND ALARM LOAD SUBTOTAL						6.99 AH			
						DERATING FACTOR						x 1.25			
						SECONDARY LOAD REQUIREMENTS (AMP HOURS)						8.74 AH			
												PROVIDE (2) 12V 12AH BATTERIES @ 24VDC			

PANEL FACP (6808) SUMMARY REPORT

PANEL PS10 (HPF-PS10) SUMMARY REPORT
PANEL POWER SUPPLY MAX CURRENT = 10A
TOTAL USED CAPACITY = 8.153A (81.53%)

PANEL LOAD SUMMARY								STANDBY CURRENT (AMPS)		ALARM CURRENT (AMPS)					
PANEL COMPONENT SUMMARY		QTY	PART NO	DESCRIPTION				CURRENT DRAW (A)	TOTAL (A)	CURRENT DRAW (A)	TOTAL				
		1	HPF-PS10 MAIN BOARD	Fire Alarm Power Supply Main Board				1 x 0.156	= 0.156	1 x 0.185	= 0.185				
CIRCUIT SUMMARY		CIRCUIT													
				NAC10			771'	0.00193	1 x 0	= 0	1 x 1.328	= 1.328			
				NAC5			545'	0.00193	1 x 0	= 0	1 x 1.328	= 1.328			
				NAC6			559'	0.00193	1 x 0	= 0	1 x 1.328	= 1.328			
				NAC7			654'	0.00193	1 x 0	= 0	1 x 1.328	= 1.328			
				NAC8			669'	0.00193	1 x 0	= 0	1 x 1.328	= 1.328			
				NAC9			759'	0.00193	1 x 0	= 0	1 x 1.328	= 1.328			
				TOTAL STANDBY CURRENT				0.156		TOTAL ALARM CURRENT		8.153			
CIRCUIT DETAILS AND CALCULATIONS								STANDBY CURRENT		ALARM CURRENT		POINT-TO-POINT VOLTAGE DROP CALCULATION SUMMARY			
SOURCE	CIRCUIT	AWG	SYMBOL	QTY	PART NO	DEVICE SETTING	CIRCUIT LENGTH	CIRCUIT RESISTANCE (Ω/ft)	CURRENT DRAW (A)	TOTAL (A)	CURRENT DRAW (A)	TOTAL (A)	STARTING CALCULATION VOLTAGE	END OF LINE VOLTAGE	VOLTAGE DROP
HPF-PS10 MAIN BOARD	NAC10	12		8	HW-LF		771'	0.00193	8 x 0	= 0	8 x 0.166	= 1.328	20.4v	17.46v	2.94v
	NAC5	12		8	HW-LF		545'	0.00193	8 x 0	= 0	8 x 0.166	= 1.328	20.4v	18.64v	1.76v
	NAC6	12		8	HW-LF		559'	0.00193	8 x 0	= 0	8 x 0.166	= 1.328	20.4v	18.56v	1.84v
	NAC7	12		8	HW-LF		654'	0.00193	8 x 0	= 0	8 x 0.166	= 1.328	20.4v	18.08v	2.32v
	NAC8	12		8	HW-LF		669'	0.00193	8 x 0	= 0	8 x 0.166	= 1.328	20.4v	18v	2.4v
	NAC9	12		8	HW-LF		759'	0.00193	8 x 0	= 0	8 x 0.166	= 1.328	20.4v	17.53v	2.87v
SECONDARY POWER SOURCE REQUIREMENTS															
						REQUIRED STANDBY TIME = 24 HOURS									
						REQUIRED ALARM TIME = 5 MINUTES									
						SECONDARY STANDBY LOAD						0.156 x 24 = 3.74 AH			
						SECONDARY ALARM LOAD						8.153 x 0.08 = 0.65 AH			
						STANDBY AND ALARM LOAD SUBTOTAL						4.42 AH			
						DERATING FACTOR						x 1.25			
						SECONDARY LOAD REQUIREMENTS (AMP HOURS)						5.53 AH			
												PROVIDE (2) 12V 7AH BATTERIES @ 24VDC			

PROVIDE (2) 12V 7AH BATTERIES @ 24VDC



BRADLEY HEIGHTS BUILDING E
 27TH AVE SE AND 5TH ST SE, PUYALLUP, WA 98374

REVISIONS:
 (2026-05-14) INITIAL SET

SHEET NUMBER: EF2.01

SHEET TITLE: FIRE ALARM PANEL CALCULATIONS

PLOT DATE: 05-14-26

DESIGNED BY: D.S.K.

JOB NUMBER: 25-058



City of Puyallup
 Development & Permitting Services
ISSUED PERMIT

Building	Planning
Engineering	Public Works
Fire	Traffic

BRADLEY HEIGHTS BUILDING E

27TH AVE SE AND 5TH ST SE, PUYALLUP, WA 98374

REVISIONS:
 (2026-05-14)
 INITIAL SET

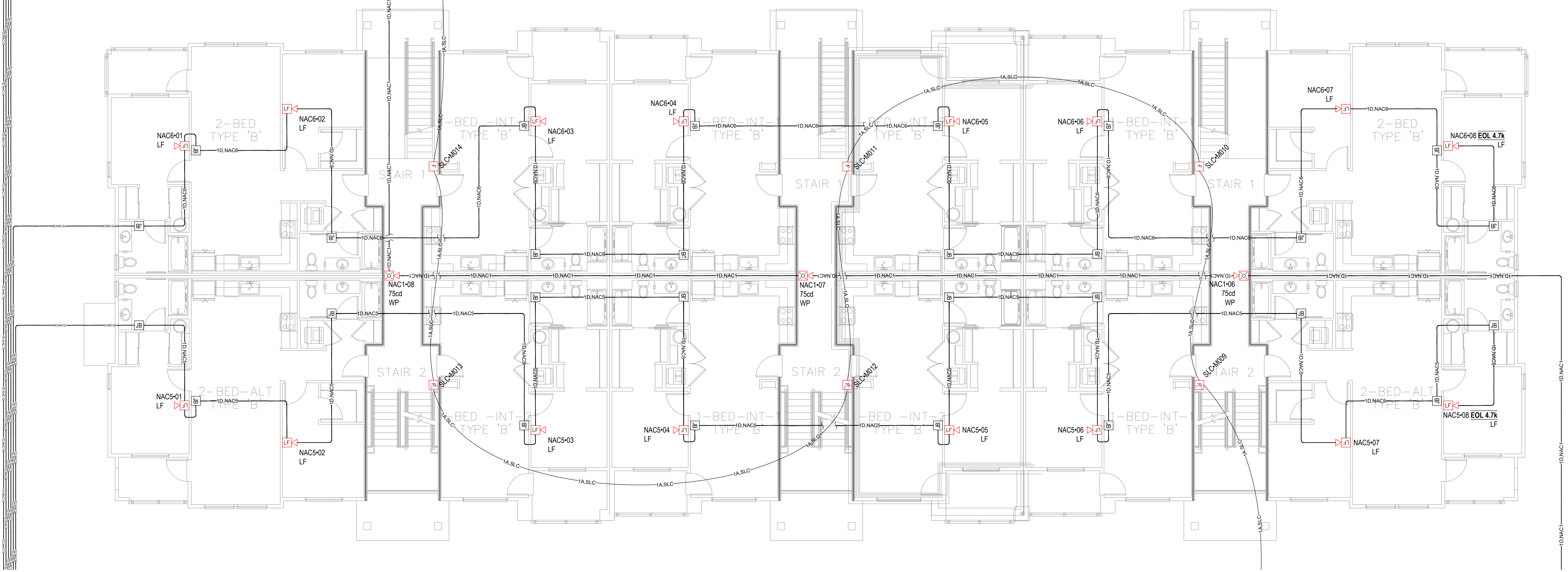
SHEET NUMBER: EF3.01

SHEET TITLE:
 BASEMENT &
 LEVEL 1 FIRE
 ALARM PLAN

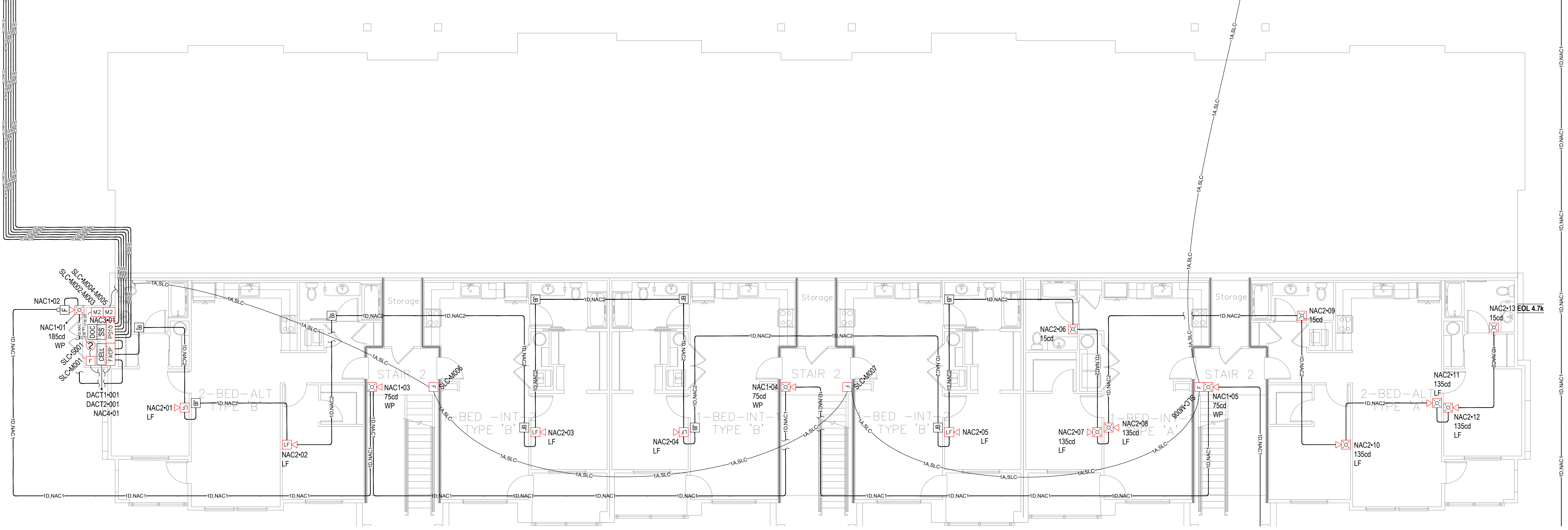
PLOT DATE: 05-14-26

DESIGNED BY: D.S.K.

JOB NUMBER: 25-058



1 LEVEL 1 FIRE ALARM PLAN
 SCALE: 1/8" = 1'-0"



1 BASEMENT FIRE ALARM PLAN
 SCALE: 1/8" = 1'-0"

City of Puyallup
 Development & Permitting Services
 ISSUED PERMIT

Building	Planning
Engineering	Public Works
Fire	Traffic

**BRADLEY HEIGHTS
 BUILDING E**

27TH AVE SE AND 5TH ST SE, PUYALLUP, WA 98374

REVISIONS:
 (2026-05-14)
 INITIAL SET

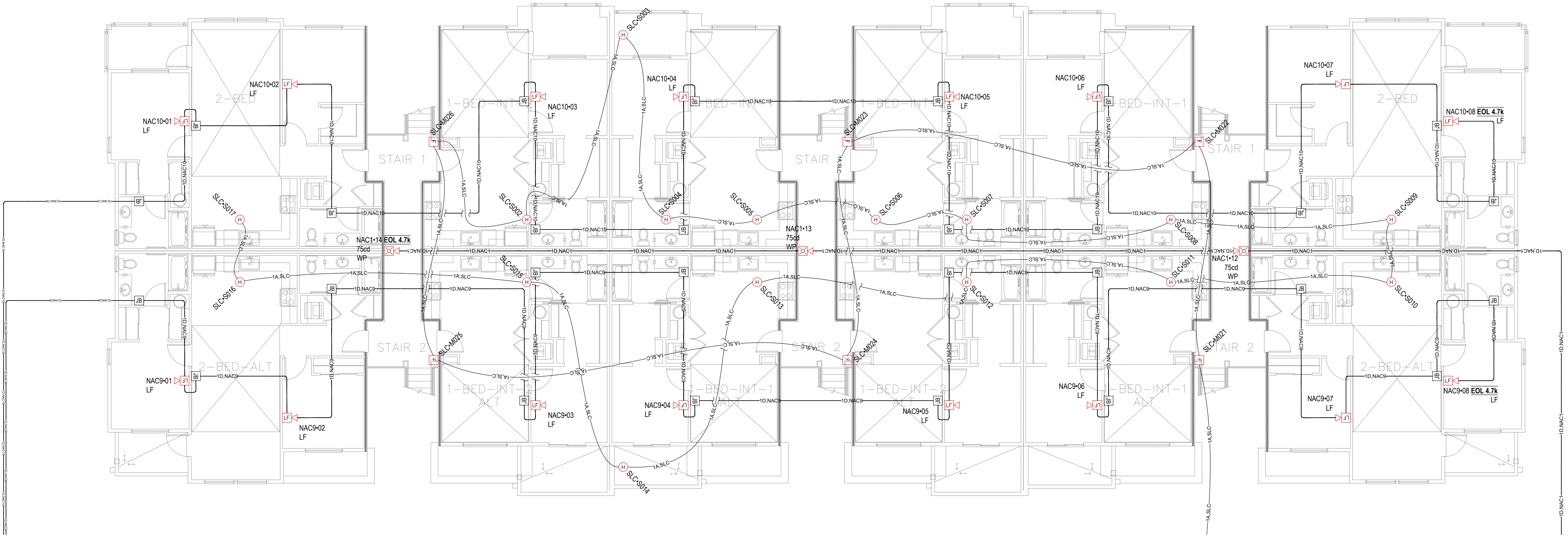
SHEET NUMBER: EF3.02

SHEET TITLE:
 LEVEL 2 & 3
 FIRE ALARM
 PLAN

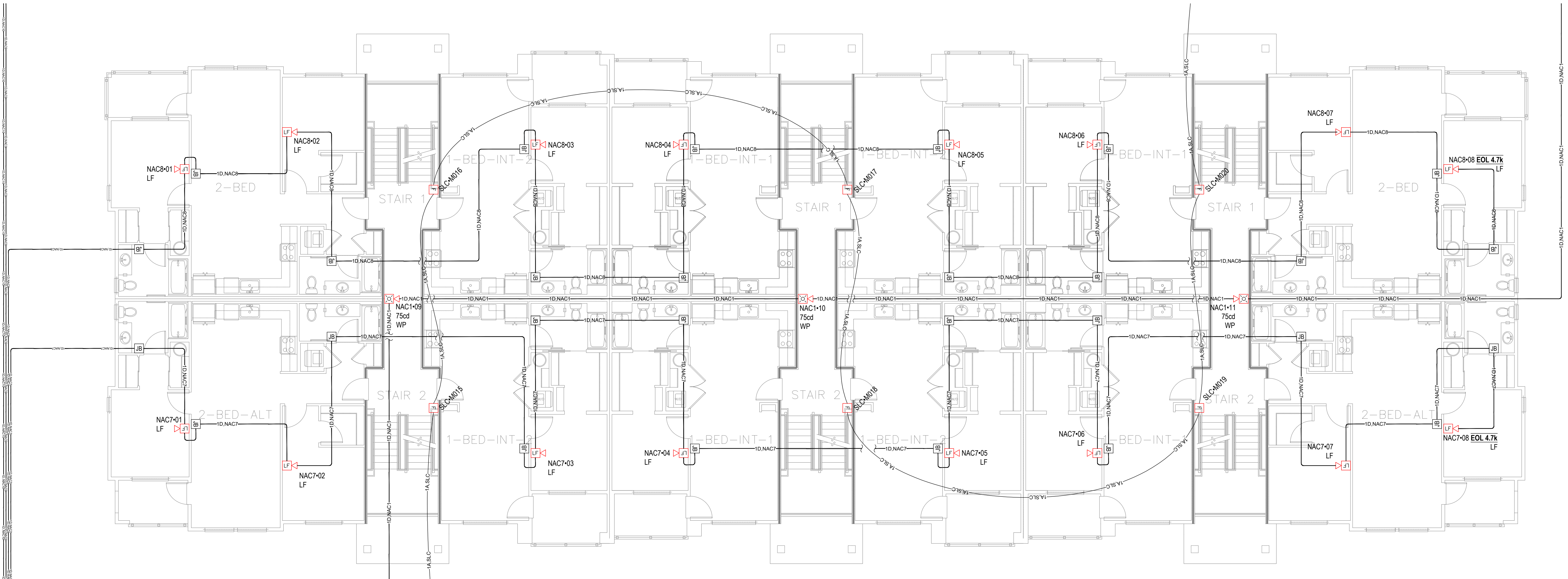
PLOT DATE: 05-14-26

DESIGNED BY: D.S.K.

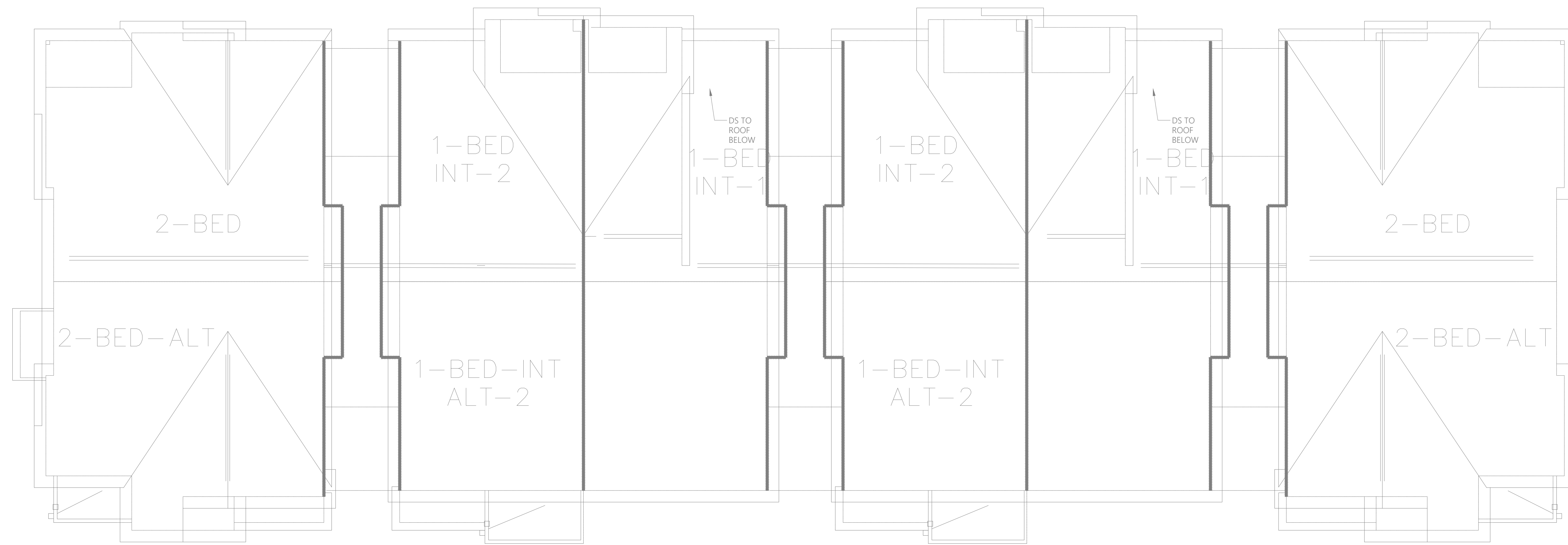
JOB NUMBER: 25-058



1 LEVEL 3 FIRE ALARM PLAN
 SCALE: 1/8" = 1'-0"



1 LEVEL 2 FIRE ALARM PLAN
 SCALE: 1/8" = 1'-0"



1 ROOF FIRE ALARM PLAN
SCALE: 1/8" = 1'-0"

City of Puyallup
Development & Permitting Services
ISSUED PERMIT

Building	Planning
Engineering	Public Works
Fire	Traffic



BRADLEY HEIGHTS
BUILDING E

27TH AVE SE AND 5TH ST SE, PUYALLUP, WA 98374

REVISIONS:
 (2026-05-14)
 INITIAL SET

SHEET NUMBER: EF3.03

SHEET TITLE:
 ROOF FIRE
 ALARM PLAN

PLOT DATE: 05-14-26

DESIGNED BY: D.S.K.

JOB NUMBER: 25-058