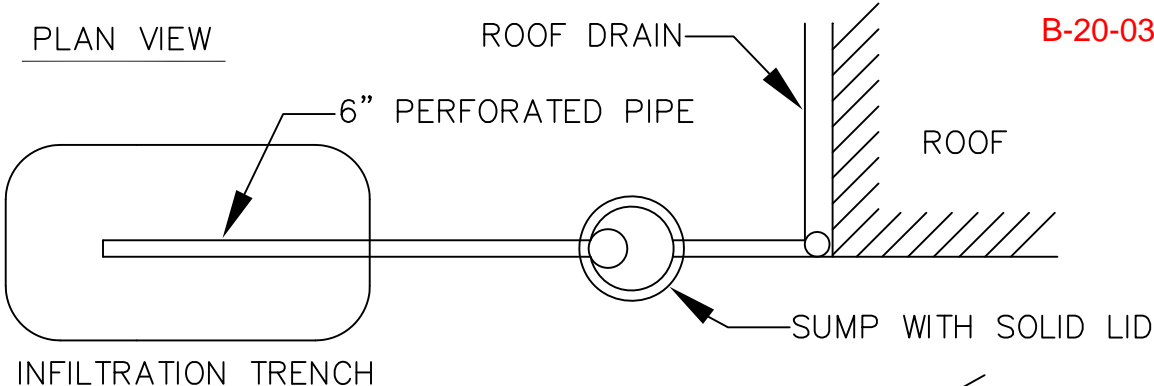
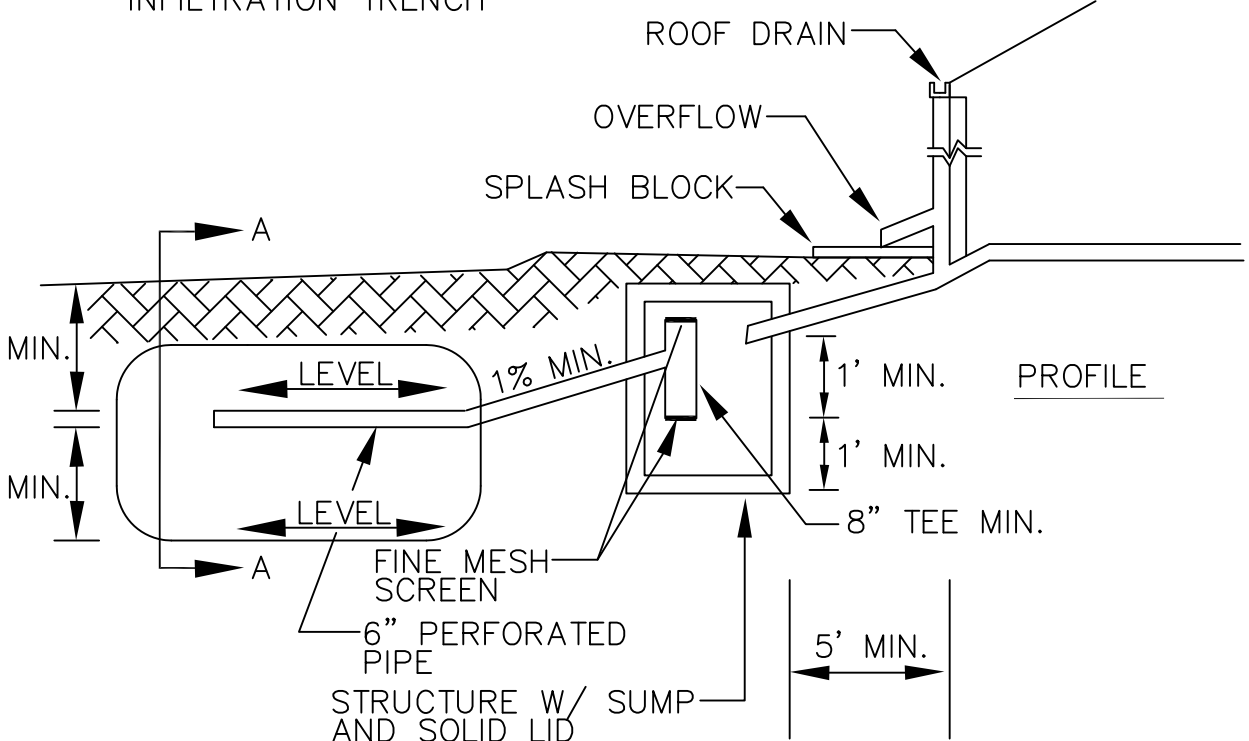


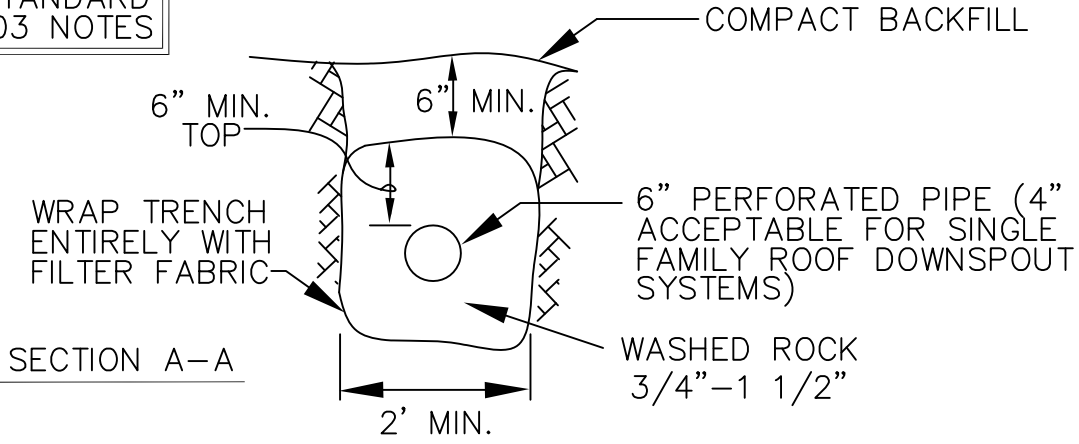
PLAN VIEW



PROFILE



SEE CITY STANDARD NO. 02.05.03 NOTES



CITY OF PUYALLUP

DEVELOPMENT ENGINEERING and PUBLIC WORKS DEPARTMENTS

INDIVIDUAL ROOF DOWNSPOUT SYSTEM

<small>DRAWN BY</small> LINDA LANSING	<small>CHECKED BY</small> LINDA LIAN	<small>APPROVED BY</small> COLLEEN HARRIS	<small>REVISED BY</small> LINDA LIAN	<small>CITY STANDARD</small>
<small>FILE NAME</small> F:\DWG\COMMON\STDS\CITY\2009\02_SD\02.05.01	<small>DATE APPROVED</small> 09/01/1992	<small>DATE REVISED</small> 02/19/2014	<small>SCALE</small> NTS	02.05.01

NOTE:

SOIL CONDITIONS, INFILTRATION RATES, AND TRENCH SIZING SHALL BE PERFORMED BY A LICENSED PROFESSIONAL ENGINEER.

GENERAL NOTES:

1. THE FOLLOWING MINIMUM LENGTHS (LINEAR FEET) PER 1,000 SQUARE FEET OF ROOF AREA BASED ON SOIL TYPE MAY BE USED FOR SIZING DOWNSPOUTS INFILTRATION TRENCHES.

COARSE SANDS AND COBBLES	20 LF
MEDIUM SAND	30 LF
FINE SAND, LOAMY SAND	75 LF
SANDY LOAM	125 LF
LOAM	190 LF

2. MAXIMUM LENGTH OF TRENCH SHALL NOT EXCEED 100 FEET FROM THE INLET SUMP.
3. MINIMUM SPACING BETWEEN TRENCH CENTER LINES SHALL BE 6 (SIX) FEET.



CITY OF PUYALLUP

DEVELOPMENT ENGINEERING and
PUBLIC WORKS DEPARTMENTS

INDIVIDUAL ROOF DOWNSPOUT SYSTEM NOTES

<small>DRAWN BY</small> LINDA LANSING	<small>CHECKED BY</small> LINDA LIAN	<small>APPROVED BY</small> COLLEEN HARRIS	<small>REVISED BY</small> XXXX	<small>CITY STANDARD</small>
<small>FILE NAME</small> F:\DWG\COMMON\STDS\CITY\2009\02_SD\02.05.03	<small>DATE APPROVED</small> 09/01/1992	<small>DATE REVISED</small> 06/01/2003	<small>SCALE</small> NTS	02.05.03