

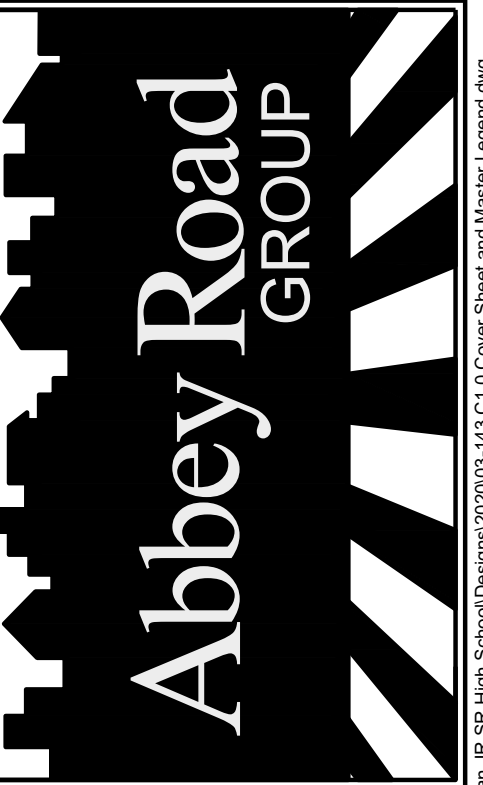
CASCADE CHRISTIAN SEC. 35\TWP. 20\RGE. 04, W.M. MASTER LEGEND

APPROVED
 BY: _____ CITY OF PUYALLUP
 ENGINEERING SERVICES
 DATE: _____
 NOTE: THIS APPROVAL IS VOID
 AFTER 1 YEAR FROM APPROVAL
 DATE.
 THE CITY WILL NOT BE
 RESPONSIBLE FOR ERRORS AND/OR
 OMISSIONS ON THESE PLANS.
 FIELD CONDITIONS MAY DICTATE
 CHANGES TO THESE PLANS AS
 DETERMINED BY THE
 ENGINEERING SERVICES
 MANAGER

Cascade Christian
 MASTER LEGEND
 Puyallup, WA

FOR: Cascade Christian School
 Don Johnson
 815 21st St. SE
 Puyallup, WA 98372

Abbey Road Group
 Land Development
 Services Company, LLC
 923 SHAW ROAD, SUITE A
 PUYALLUP, WA 98372
 P.O. Box 1224, Puyallup, WA 98371
 (253) 435-3699, Fax (253) 446-3199



CHANNELIZATION

SYMBOL	DESCRIPTION
	BIKE PATH
	HANDICAP SYMBOL
	H.O.V. LANE SYMBOL
	ONLY
	RAILROAD CROSSING
	SCHOOL
	STOP
	LANE CONTROL ARROWS: STRAIGHT ARROW
	LT, RT, STR. ARROW
	LEFT-RIGHT ARROW

CHANNELIZATION

SYMBOL	DESCRIPTION
	2-WAY LEFT TURN
	LEFT TURN ARROW
	RIGHT TURN ARROW
	LEFT-STRAIGHT ARROW
	RIGHT-STRAIGHT ARROW
	RAISED MARKERS: LANE MARKERS TYPE I
	LANE MARKERS TYPE II
	CONCRETE BARRIER*
	CONCRETE BARRIER TERMINAL END*

ABBREVIATIONS

AC = ASPHALTIC CONCRETE SURFACE	LPT = POINT
BRW = BOTTOM OF RETAINING WALL	PVC = POLY VINYL CHLORIDE
BR = BOTTOM OF ROCKERY	R = RADIUS
BS = BOTTOM OF SWALE	ROW = RIGHT OF WAY
CB = CATCH BASIN	SF = SQUARE FEET
CC = CONCRETE CURB	SL = SLOPE
CG = CONCRETE GUTTER	SS = SANITARY SEWER
CL = CENTERLINE	SSCO = SANITARY SEWER CLEANOUT
CONC = CONCRETE	SSMH = SANITARY SEWER MANHOLE
CTR = CENTER	SD = STORM DRAIN
DI = DUCTILE IRON	TA = TOP OF ASPHALT
EA = EDGE OF ASPHALT	TC = TOP OF CONCRETE
EX = EXISTING	TRW = TOP OF RETAINING WALL
FF = FINISH FLOOR	TR = TOP OF ROCKERY
FL = FLOW LINE	TW = TOP OF SIDEWALK
G = GAS MAIN	TYP = TYPICAL
HG = HANDICAP PARKING STALL	W = WATER
IE = INVERT ELEVATION	VP = VENT PIPE
LS = LANDSCAPE	(P) = PER PLAT UNDER RECORDING
OHP = OVERHEAD POWER	(M) = MEASURED DATA
P = PROPERTY LINE	(R) = RECORD DATA

SIGNALIZATION

SYMBOL	DESCRIPTION
	AERIAL: AERIAL DISCONNECT
	AERIAL TERMINAL COMPARTMENT
	DETECTORS: DETECTOR LOOP TYPE I
	DETECTOR LOOP TYPE II
	PEDESTRIAN DETECTOR
	EMERGENCY VEHICLE INDICATOR LIGHTS: FLASHING WARNING SYSTEM
	INDICATOR LIGHTS
	EVP SENSOR
	EVP SENSOR W/ INDICATOR LIGHTS
	J BOX/CONTROLLERS: JUNCTION BOX (TYPE I, II, III)
	CONTROL CABINET
	SERVICE CABINET
	NOTES: POLE NOTE
	WIRE NOTE

SIGNALIZATION

SYMBOL	DESCRIPTION
	POLES: PEDESTRIAN PUSHBUTTON POST W/ PUSHBUTTON
	SIGNAL POLE TYPE I *
	SIGNAL POLE TYPE II *
	SIGNAL POLE TYPE III *
	STREET LIGHT ASSEMBLY
	RAILROAD CROSSING: R/R CROSSING GATE
	R/R CROSSING SIGNAL
	SIGNAL HEADS: PEDESTRIAN SIGNAL HEAD
	VEHICLE SIGNAL HEAD
	TRAFFIC SIGNS: SIGN *
	BRIDGE
	CANTILEVERED
	DOUBLE POST
	SINGLE POST

SURFACES

	ASPHALT
	CLEARING LIMITS
	CONCRETE
	FILTER FABRIC FENCE
	INTERCEPTOR SWALE
	PARKING COUNT

WATER

SYMBOL	DESCRIPTION
	CAP/PLUG
	COUPLING
	GUARD POST
	REDUCER
	THRUST BLOCK
	SPRINKLER HEAD
	WATER METER
	FIRE HYDRANTS: 2-NOZZLE 3-NOZZLE
	JOINTS: FLANGE/BLIND FL
	MECHANICAL
	PUSH-ON/HUB
	THREAD
	VALVES: AIR RELIEF
	BLOW-OFF
	BUTTERFLY
	CHECK
	GATE/GENERAL
	PLUG VALVE
	ADAPTER, FL. x M.J.
	BENDS: 90 DEGREE BEND, FL.
	45 DEGREE BEND, FL.
	22.5 DEGREE BEND, FL.
	11.25 DEGREE BEND, FL.
	90 DEGREE BEND, M.J.
	45 DEGREE BEND, M.J.
	22.5 DEGREE BEND, M.J.
	11.25 DEGREE BEND, M.J.
	M.J. VERTICAL BEND, FL.
	VERTICAL BEND, M.J.
	REDUCERS: REDUCER, FL.
	REDUCER, M.J.
	REDUCER, M.J. x FL.
	REDUCER, M.J. x P.E.
	REDUCER, P.E. x M.J. FL. x M.J.
	TEES: TAPPING TEE & VALVE FL. x M.J.
	TEE, FL.
	TEE, M.J.
	TEE, M.J. x FL.
	VALVES: BUTTERFLY VALVE FL. x M.J.
	BUTTERFLY VALVE, M.J.
	GATE VALVE, FL. x M.J.
	GATE VALVE, M.J.

SURVEY

SYMBOL	DESCRIPTION
	ANGLE POINT
	BENCH MARK
	BLOCK CORNER
	IRON PIPE
	MONUMENT (IN CASE)
	MONUMENT (SURFACE)
	OWNERSHIP TIE
	SECTION DATA:
	SECTION CENTER
	QUARTER CORNER
	SIXTEENTH CORNER
	CLOSING CORNER
	MEANDER CORNER
	WITNESS CORNER
	SOIL BORING
	SPOT ELEVATION
	TAX LOT /
	ASSESSOR NUMBER

UTILITIES

SYMBOL	DESCRIPTION
	GAS METER
	GAS VALVE
	GAS VENT/BLOW-OFF
	PAD MOUNTED TRANSFORMER
	POWER VAULT
	TRANSMISSION TOWER
	UTILITY POLE
	UTILITY POLE ANCHOR
	TELEPHONE RISER
	TELEPHONE VAULT
	TELEPHONE BOOTH
	MISC UTIL BOX
	MISC UTIL MANHOLE
	CONDUIT
	GUY POLE

NOTES: EXISTING UTILITY COLORS CORRESPOND TO COLOR CODE SPECIFIED BY THE UTILITIES UNDERGROUND LOCATION CENTER AS FOLLOWS:
 ELECTRIC/POWER - RED (1)
 GAS & OIL - YELLOW (2)
 PHONE & CATV - ORANGE (30)
 WATER - BLUE (5)
 SEWER - GREEN (106)

SANITARY/STORM

SYMBOL	DESCRIPTION
	SAN. SEWER CLEAN OUT
	SAN. SEWER MANHOLE
	STORM DRAIN CATCH BASIN
	STORM DRAIN + CULVERT
	MANHOLE STORM DRAIN
	STORM DRAIN DRYWELL
	STORM DRAIN INLET
	SEPTIC TANK
	LOG WEIR
	STORM DRAINAGE RESTRICTOR/OIL POLLUTION CONTROL DEVICE

SURFACE FEATURES

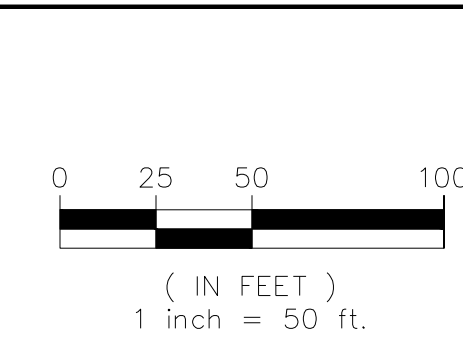
SYMBOL	DESCRIPTION
	BUS STOP
	EMBANKMENT
	MAIL BOX
	RIP RAP
	ROCKERY
	SHRUB
	SIGN
	TREE (Conifer)
	TREE (Deciduous)
	YARD LIGHT
	MARSH/WETLANDS

REVISIONS:	CHK:	APR:	DATE:	PER:

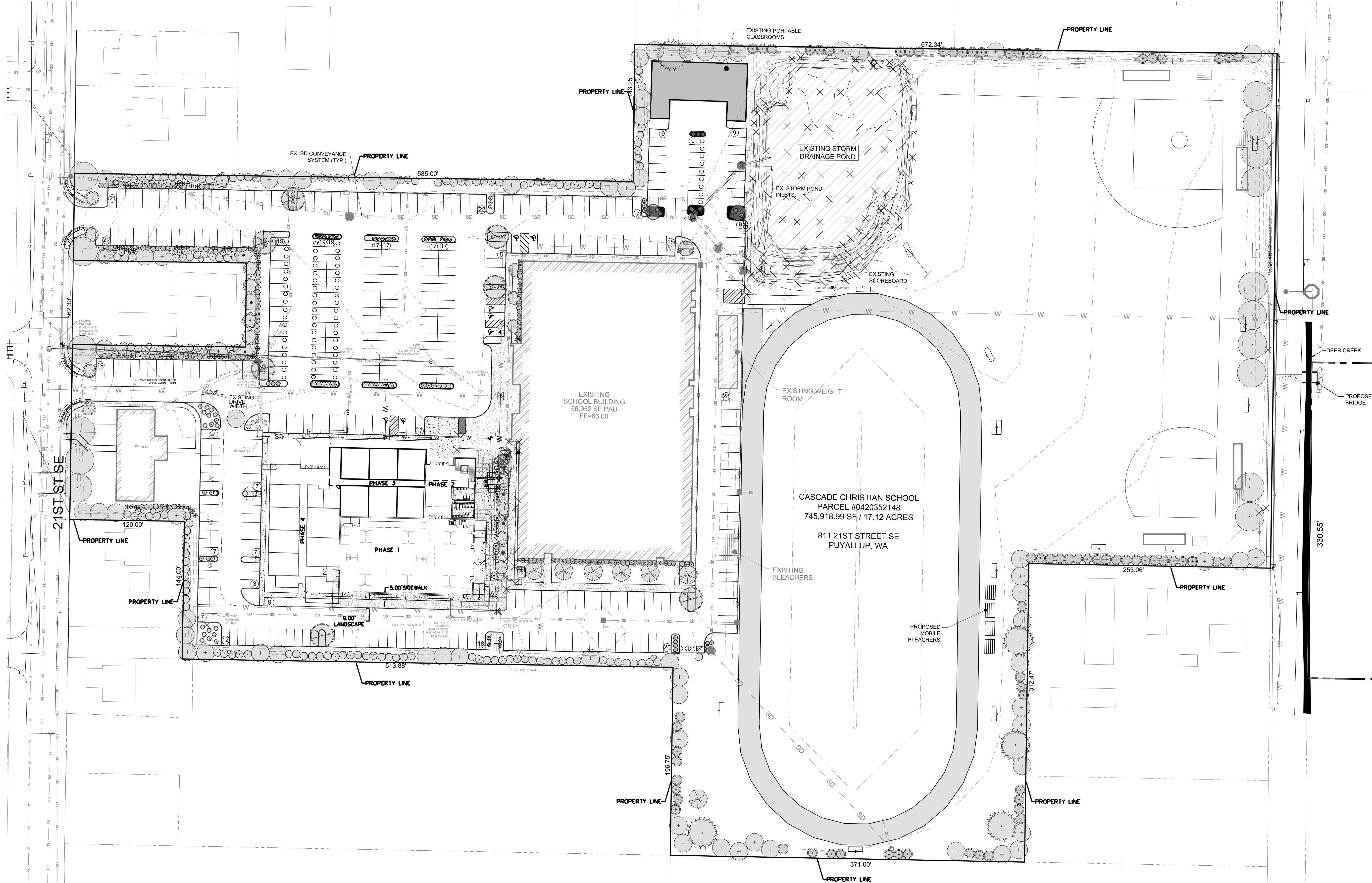
JOB # 03-143
DESIGNED BY: GIL HULSMANN
DEVELOPMENT REVIEW: PRB
APPROVED BY: GH
DRAFTED BY: AEG
DATE: 20 MAY 2020
SHEET: C1.1

© 2020 Abbey Road Group Land Development Services Company, LLC, Puyallup, WA All rights reserved.
 These drawings, plans, specifications and other documents, including those in electronic form, are owned by Abbey Road Group Land Development Services Company, LLC and it retains all common law, statutory and other reserved rights, including copyrights.
 These drawings, plans, specifications and other documents cannot be copied, distributed, submitted to others (including governmental agencies and lenders) without the express written consent of Abbey Road Group Land Development Services Company, LLC.

CASCADE CHRISTIAN SEC. 35\TWP. 20\RGE. 04, W.M. FULL SITE PLAN



APPROVED
 BY: CITY OF PUYALLUP
 ENGINEERING SERVICES
 DATE: _____
 NOTE: THIS APPROVAL IS VOID
 AFTER 1 YEAR FROM APPROVAL
 DATE.
 THE CITY WILL NOT BE
 RESPONSIBLE FOR ERRORS AND/OR
 OMISSIONS ON THESE PLANS.
 FIELD CONDITIONS MAY DICTATE
 CHANGES TO THESE PLANS AS
 DETERMINED BY THE
 ENGINEERING SERVICES
 MANAGER



JOB # 03-143	REVISIONS:	CHK: APR. DATE: PER:
DESIGNED BY: GIL HULLSMANN	BY: _____	CHK: APR. DATE: PER:
DEVELOPMENT REVIEW: PRB	BY: _____	CHK: APR. DATE: PER:
APPROVED BY: GH	BY: _____	CHK: APR. DATE: PER:
DRAFTED BY: AEG	BY: _____	CHK: APR. DATE: PER:
DATE: 20 MAY 2020	BY: _____	CHK: APR. DATE: PER:
SHEET: C1.2	BY: _____	CHK: APR. DATE: PER:

Cascade Christian
FULL SITE PLAN
 Puyallup, WA

FOR:
Cascade Christian School
 Don Johnson
 815 21st St. SE
 Puyallup, WA 98372

Abbey Road Group
 Land Development
 Services Company, LLC
 923 SHAW ROAD, SUITE A
 PUYALLUP, WA 98372
 P.O. Box 1224, Puyallup, WA 98371
 (253) 435-3699, Fax (253) 446-3159

Abbey Road GROUP

Abbey Road Group
 Land Development
 Services Company, LLC
 923 SHAW ROAD, SUITE A
 PUYALLUP, WA 98372
 P.O. Box 1224, Puyallup, WA 98371
 (253) 435-3699, Fax (253) 446-3159

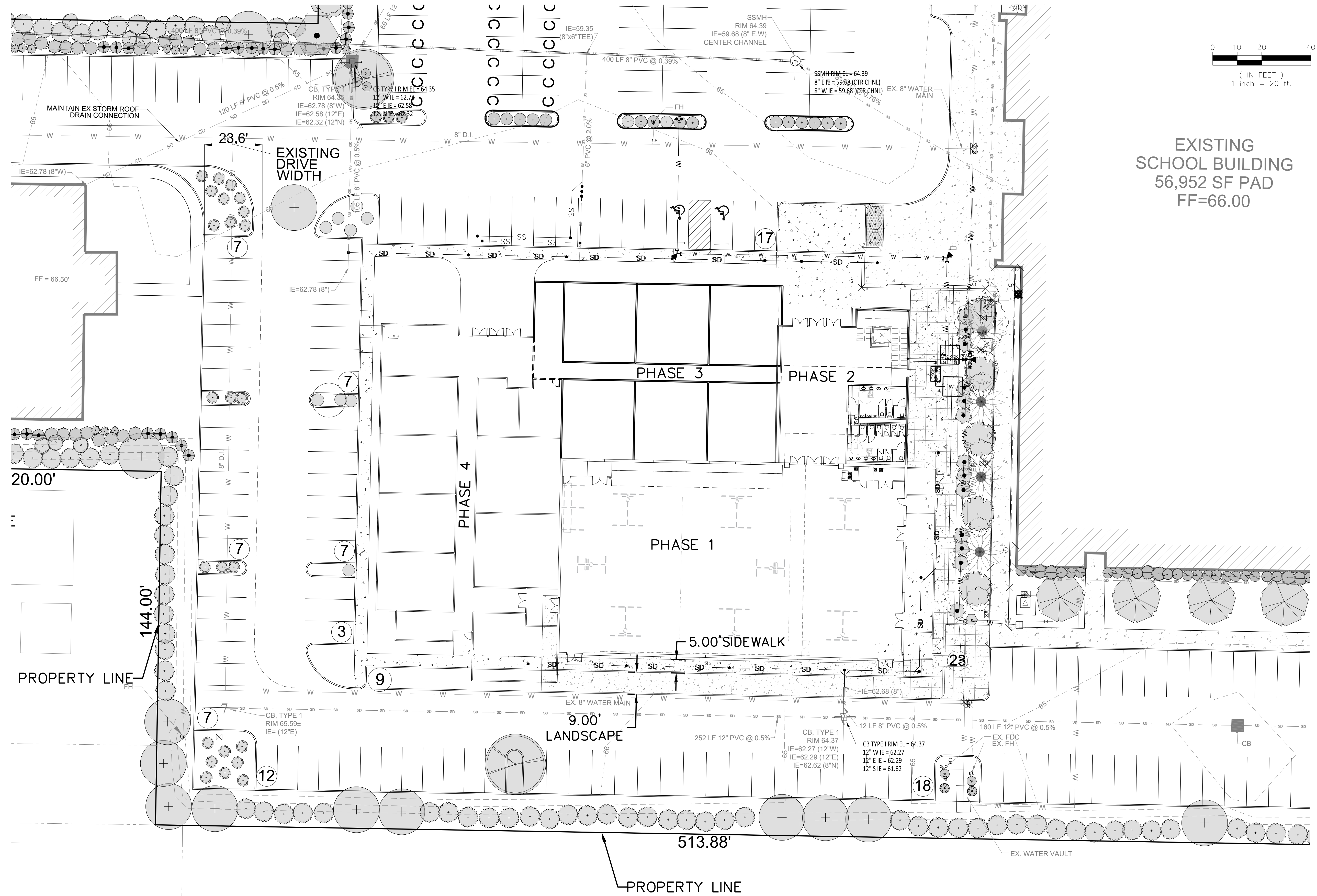
DESIGNED BY: GIL HULLSMANN
 DEVELOPMENT REVIEW: PRB
 APPROVED BY: GH
 DRAFTED BY: AEG
 DATE: 20 MAY 2020
 SHEET: C1.2

File: T:\PROJECTS\FILES\ACTIVE\03-143 Cascade Christian - SR High School\Design\2018\05-143 C2.0 Street Plan.dwg
 Plotted: 5/20/20 10:38 AM
 Plotted By: Ayla Graham

© 2020 Abbey Road Group Land Development Services Company, LLC, Puyallup, WA All rights reserved.
 These drawings, plans, specifications and other documents, including those in electronic form, are owned by Abbey Road Group Land Development Services Company, LLC and it retains all common law, statutory and other reserved rights, including copyrights.
 These drawings, plans, specifications and other documents cannot be copied, distributed, submitted to others (including governmental agencies and lenders) without the express written consent of Abbey Road Group Land Development Services Company, LLC.

CASCADE CHRISTIAN SEC. 35\TWP. 20\RGE. 04, W.M. MASTER SITE PLAN

APPROVED
 BY: CITY OF PUYALLUP
 ENGINEERING SERVICES
 DATE: _____
 NOTE: THIS APPROVAL IS VOID
 AFTER 1 YEAR FROM APPROVAL
 DATE.
 THE CITY WILL NOT BE
 RESPONSIBLE FOR ERRORS AND/OR
 OMISSIONS ON THESE PLANS.
 FIELD CONDITIONS MAY DICTATE
 CHANGES TO THESE PLANS AS
 DETERMINED BY THE
 ENGINEERING SERVICES
 MANAGER



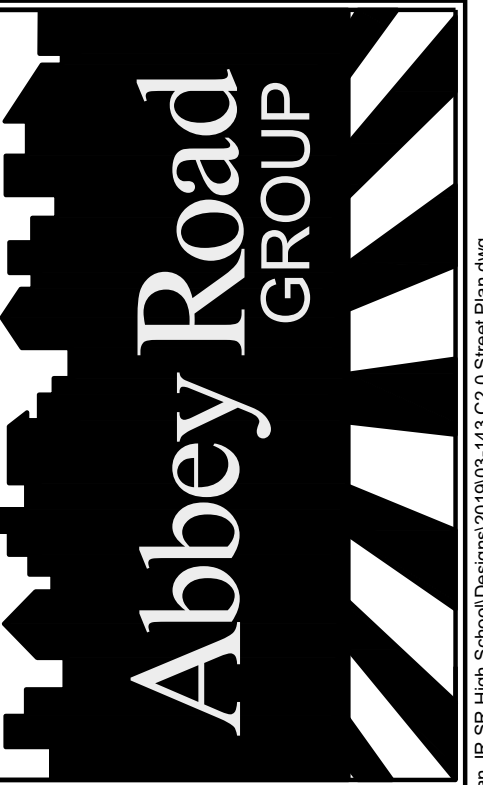
EXISTING
 SCHOOL BUILDING
 56,952 SF PAD
 FF=66.00

REVISIONS:	CHK:	APR:	DATE:	PER:

TITLE:
**Cascade Christian
 MASTER SITE
 PLAN**
 Puyallup, WA

FOR:
Cascade Christian School
 Don Johnson
 815 21st St. SE
 Puyallup, WA 98372

Abbey Road Group
 Land Development
 Services Company, LLC
 923 SHAW ROAD, SUITE A
 PUYALLUP, WA 98372
 P.O. Box 1224, Puyallup, WA 98371
 (253) 435-3699, Fax (253) 446-3159



JOB # 03-143
DESIGNED BY: GIL HULLSMANN
DEVELOPMENT REVIEW: PRB
APPROVED BY: GH
DRAFTED BY: AEG
DATE: 20 MAY 2020
SHEET: C2.0

File: T:\PROJECTS\FILES\ACTIVE\03-143 Cascade Christian - 26 SR High School\Design\2019\03-143 C2.0 Street Plan.dwg
 Plotted: 5/20/20 10:41 AM
 Plotted by: Aryn Graham

© 2020 Abbey Road Group Land Development Services Company, LLC, Puyallup, WA All rights reserved.
 These drawings, plans, specifications and other documents, including those in electronic form, are owned by Abbey Road Group Land Development Services Company, LLC and it retains all common law, statutory and other reserved rights, including copyrights.
 These drawings, plans, specifications and other documents cannot be copied, distributed, submitted to others (including governmental agencies and lenders) without the express written consent of Abbey Road Group Land Development Services Company, LLC.

CASCADE CHRISTIAN SEC. 35\TWP. 20\RGE. 04, W.M. SITE PHASING PLAN - PHASE 1

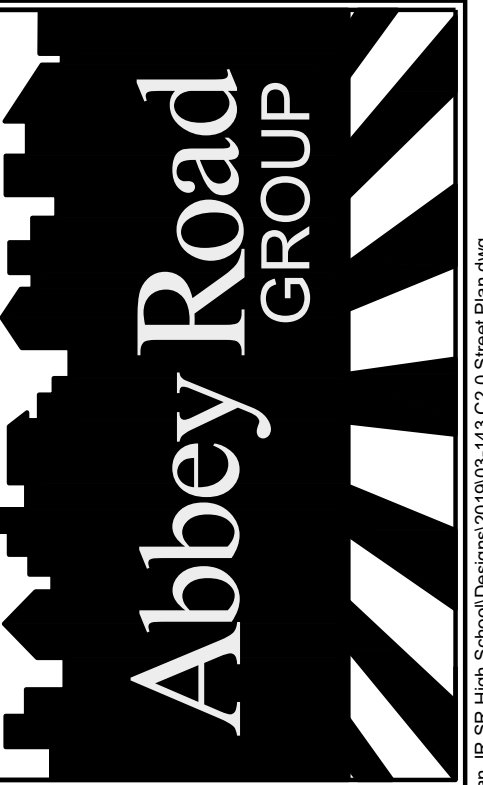
APPROVED
 BY: CITY OF PUYALLUP
 ENGINEERING SERVICES
 DATE: _____
 NOTE: THIS APPROVAL IS VOID
 AFTER 1 YEAR FROM APPROVAL
 DATE.
 THE CITY WILL NOT BE
 RESPONSIBLE FOR ERRORS AND/OR
 OMISSIONS ON THESE PLANS.
 FIELD CONDITIONS MAY DICTATE
 CHANGES TO THESE PLANS AS
 DETERMINED BY THE
 ENGINEERING SERVICES
 MANAGER

TITLE:
Cascade Christian

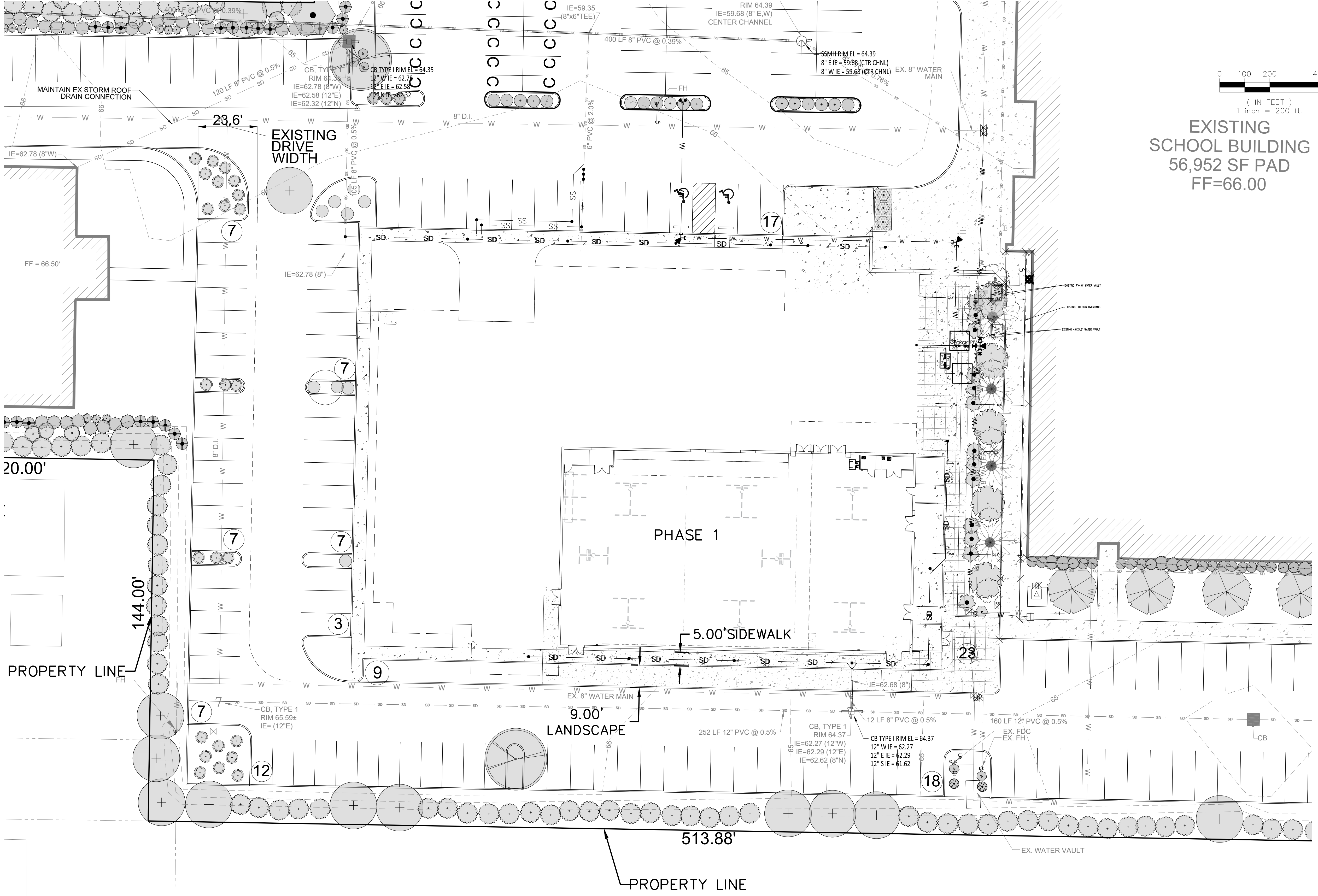
FOR:
Cascade Christian School
 Don Johnson
 815 21st St. SE
 Puyallup, WA 98372

DESIGNED BY: GIL HULLSMANN
 DEVELOPMENT REVIEW: PRB
 APPROVED BY: GH
 DRAFTED BY: AEG
 DATE: 20 MAY 2020
 SHEET: C2.1

Abbey Road Group
 Land Development
 Services Company, LLC
 923 SHAW ROAD, SUITE A
 PUYALLUP, WA 98372
 P.O. Box 1224, Puyallup, WA 98371
 (253) 435-3699, Fax (253) 446-3159



JOB #: 03-143
 DESIGNED BY: GIL HULLSMANN
 DEVELOPMENT REVIEW: PRB
 APPROVED BY: GH
 DRAFTED BY: AEG
 DATE: 20 MAY 2020
 SHEET: C2.1



EXISTING
 SCHOOL BUILDING
 56,952 SF PAD
 FF=66.00

REVISIONS:
 BY: _____
 CHK: _____
 APR: _____
 DATE: _____
 PER: _____

REVISIONS:
 BY: _____
 CHK: _____
 APR: _____
 DATE: _____
 PER: _____

File: T:\PROJECTS\FILES\ACTIVE\03-143 Cascade Christian - SR High School\Design\03-143 C2.0 Street Plan.dwg
 Plotted: 5/20/20 10:41 AM
 Plotted by: Aryn Graham

© 2020 Abbey Road Group Land Development Services Company, LLC, Puyallup, WA All rights reserved.
 These drawings, plans, specifications and other documents, including those in electronic form, are owned by Abbey Road Group Land Development Services Company, LLC and it retains all common law, statutory and other reserved rights, including copyrights.
 These drawings, plans, specifications and other documents cannot be copied, distributed, submitted to others (including governmental agencies and lenders) without the express written consent of Abbey Road Group Land Development Services Company, LLC.

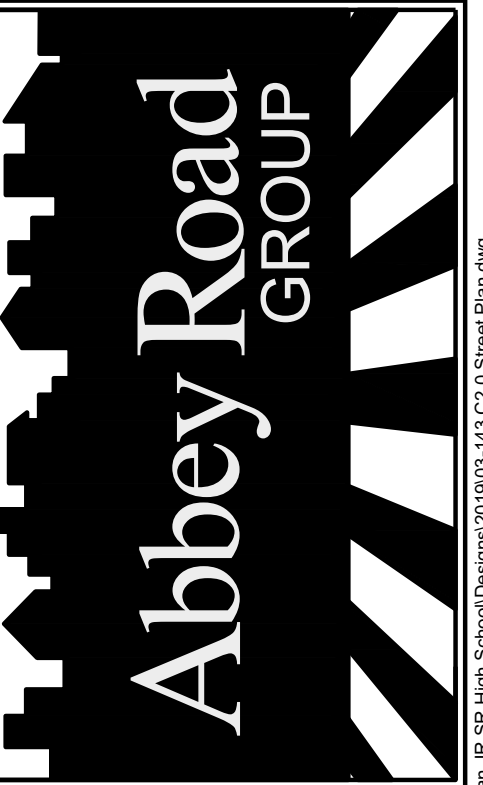
CASCADE CHRISTIAN SEC. 35\TWP. 20\RGE. 04, W.M. SITE PHASING PLAN - PHASE 2

APPROVED
 BY: CITY OF PUYALLUP
 ENGINEERING SERVICES
 DATE: _____
 NOTE: THIS APPROVAL IS VOID
 AFTER 1 YEAR FROM APPROVAL
 DATE.
 THE CITY WILL NOT BE
 RESPONSIBLE FOR ERRORS AND/OR
 OMISSIONS ON THESE PLANS.
 FIELD CONDITIONS MAY DICTATE
 CHANGES TO THESE PLANS AS
 DETERMINED BY THE
 ENGINEERING SERVICES
 MANAGER

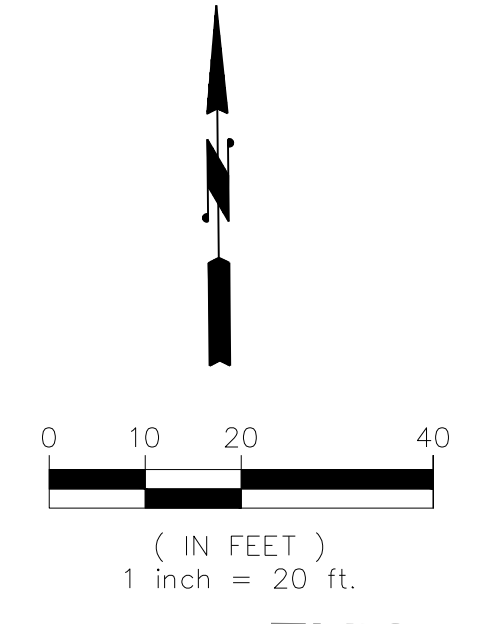
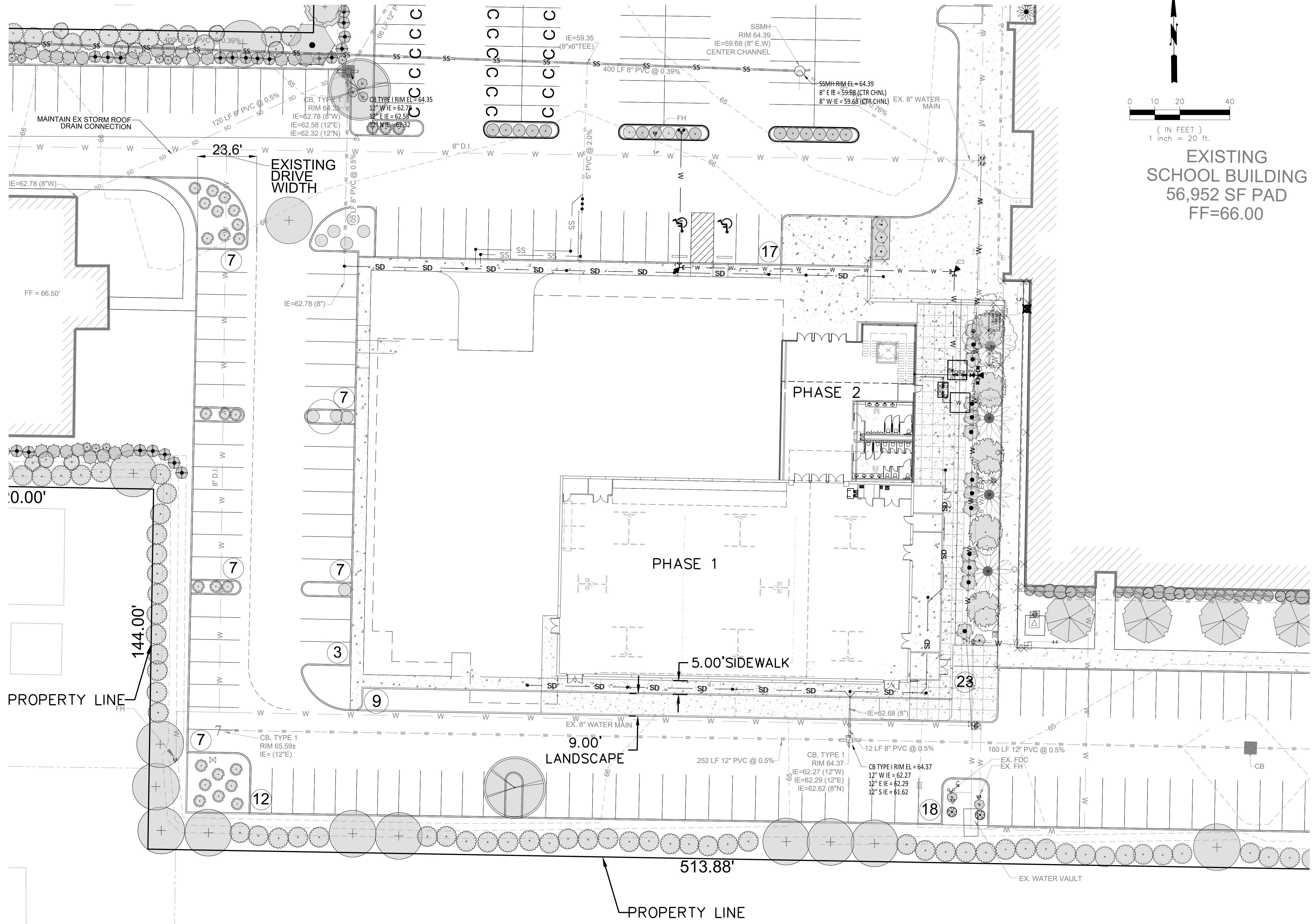
TITLE:
Cascade Christian

FOR:
Cascade Christian School
 Don Johnson
 815 21st St. SE
 Puyallup, WA 98372

Abbey Road Group
 Land Development
 Services Company, LLC
 923 SHAW ROAD, SUITE A
 PUYALLUP, WA 98372
 P.O. Box 1224, Puyallup, WA 98371
 (253) 435-3699, Fax (253) 446-3159



DESIGNED BY: GIL HULLSMANN
 DEVELOPMENT REVIEW: PRB
 APPROVED BY: GH
 DRAFTED BY: AEG
 DATE: 20 MAY 2020
 SHEET: C2.2



EXISTING
 SCHOOL BUILDING
 56,952 SF PAD
 FF=66.00

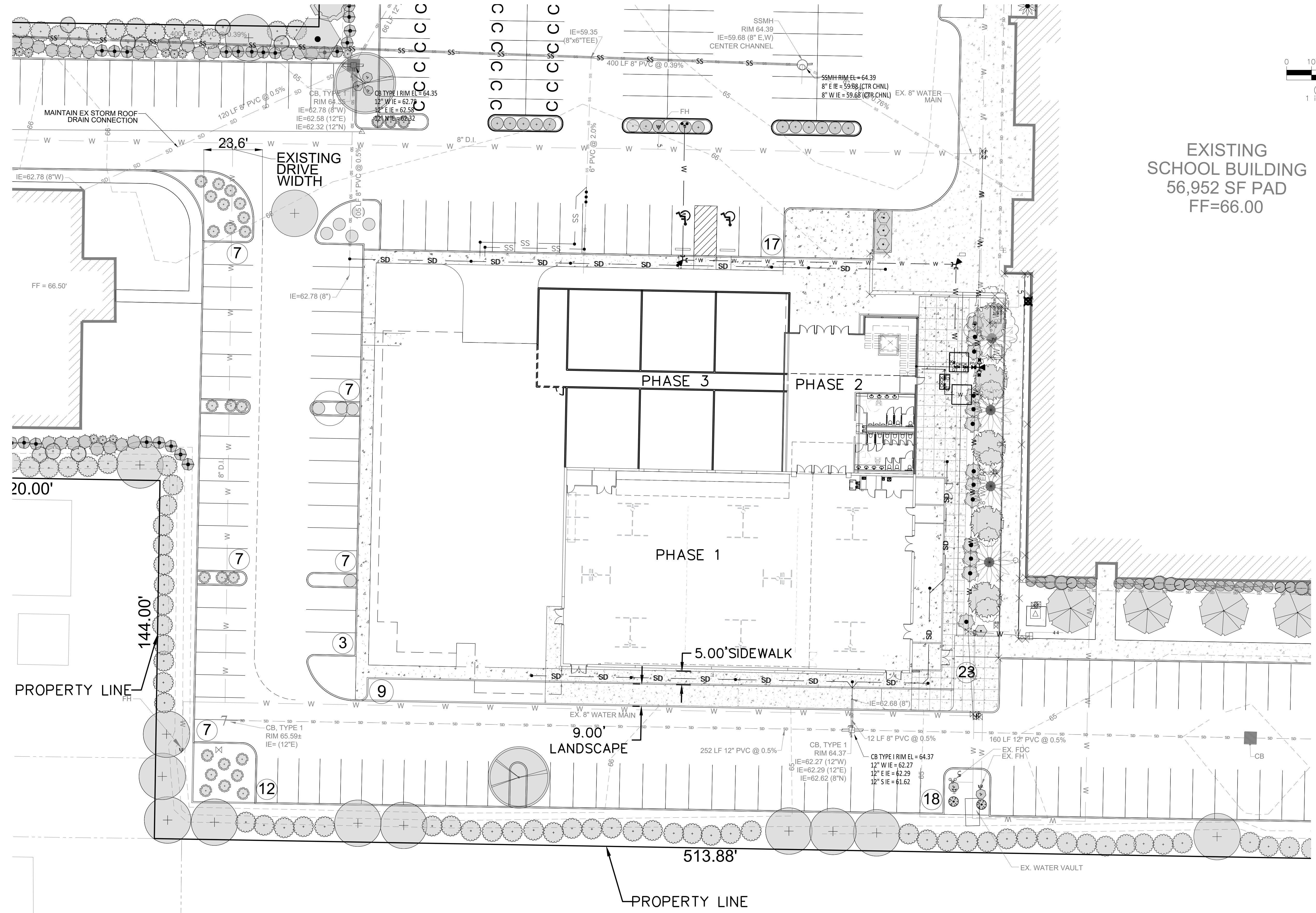
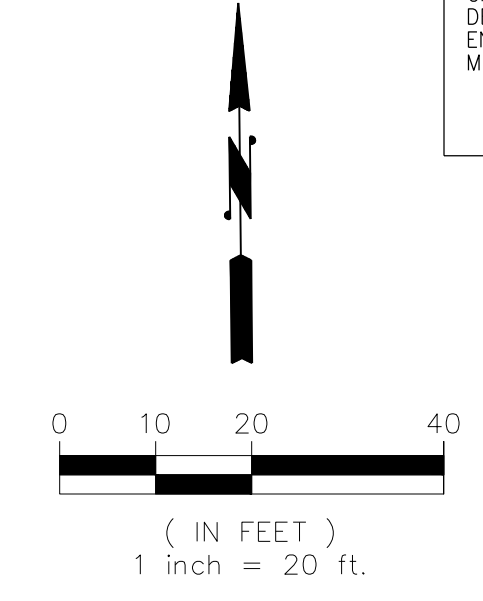
REVISIONS:	CHK:	APR:	DATE:	PER:
BY:	RJ	RJ	05/18/20	REVISED PER CITY COMMENTS DATED MAY 18, 2016
	RJ	RJ	04/27/16	REVISED PER CITY COMMENTS DATED APRIL 27, 2016
	RJ	RJ	02/09/16	REVISED PER CITY COMMENTS DATED FEBRUARY 09, 2016

File: T:\PROJECTS\FILES\ACTIVE\05143 Cascade Christian - 26 SR High School\Design\05143 C2.0 Street Plan.dwg
 Plotted By: Aryn Graham
 5/20/2020 10:41 AM

© 2020 Abbey Road Group Land Development Services Company, LLC, Puyallup, WA All rights reserved.
 These drawings, plans, specifications and other documents, including those in electronic form, are owned by Abbey Road Group Land Development Services Company, LLC and it retains all common law, statutory and other reserved rights, including copyrights.
 These drawings, plans, specifications and other documents cannot be copied, distributed, submitted to others (including governmental agencies and lenders) without the express written consent of Abbey Road Group Land Development Services Company, LLC.

CASCADE CHRISTIAN SEC. 35\TWP. 20\RGE. 04, W.M. SITE PHASING PLAN - PHASE 3

APPROVED
 BY: CITY OF PUYALLUP
 ENGINEERING SERVICES
 DATE: _____
 NOTE: THIS APPROVAL IS VOID
 AFTER 1 YEAR FROM APPROVAL
 DATE.
 THE CITY WILL NOT BE
 RESPONSIBLE FOR ERRORS AND/OR
 OMISSIONS ON THESE PLANS.
 FIELD CONDITIONS MAY DICTATE
 CHANGES TO THESE PLANS AS
 DETERMINED BY THE
 ENGINEERING SERVICES
 MANAGER



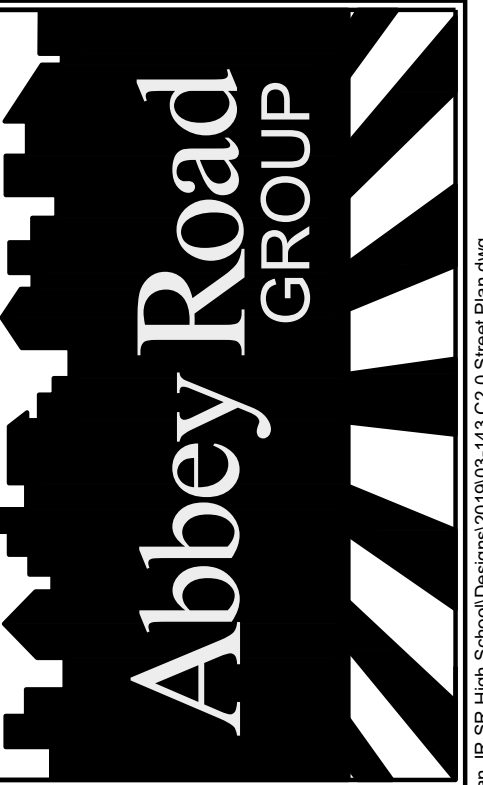
EXISTING
 SCHOOL BUILDING
 56,952 SF PAD
 FF=66.00

JOB # 03-143	REVISIONS:	BY:	CHK:	APR:	DATE:	PER:
DESIGNED BY: GIL HULLSMANN	BY: RJ	RJ	RJ	RJ	05/18/18	REVISED PER CITY COMMENTS DATED MAY 18, 2018
DEVELOPMENT REVIEW: PRB	BY: RJ	RJ	RJ	RJ	04/27/16	REVISED PER CITY COMMENTS DATED APRIL 27, 2016
APPROVED BY: GH	BY: RJ	RJ	RJ	RJ	03/29/16	REVISED PER CITY COMMENTS DATED MARCH 29, 2016
DRAFTED BY: AEG	BY: RJ	RJ	RJ	RJ	03/29/16	REVISED PER CITY COMMENTS DATED MARCH 29, 2016
DATE: 20 MAY 2020						
SHEET: C2.3						

TITLE:
Cascade Christian

FOR:
Cascade Christian School
 Don Johnson
 815 21st St. SE
 Puyallup, WA 98372

Abbey Road Group
 Land Development
 Services Company, LLC
 923 SHAW ROAD, SUITE A
 PUYALLUP, WA 98372
 P.O. Box 1224, Puyallup, WA 98371
 (253) 435-3699, Fax (253) 446-3159



File: T:\PROJECTS\FILES\ACTIVE\03-143 Cascade Christian - SR High School\Design\03-143 C2.0 Street Plan.dwg
 Plotted: 5/20/20 10:41 AM
 Plotted By: Aryn Graham

© 2020 Abbey Road Group Land Development Services Company, LLC, Puyallup, WA All rights reserved.
 These drawings, plans, specifications and other documents, including those in electronic form, are owned by Abbey Road Group Land Development Services Company, LLC and it retains all common law, statutory and other reserved rights, including copyrights.
 These drawings, plans, specifications and other documents cannot be copied, distributed, submitted to others (including governmental agencies and lenders) without the express written consent of Abbey Road Group Land Development Services Company, LLC.

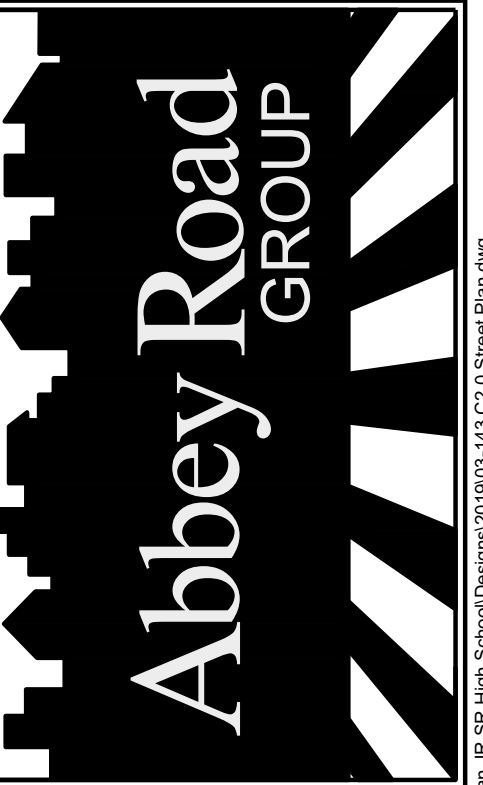
CASCADE CHRISTIAN SEC. 35\TWP. 20\RGE. 04, W.M. SITE PHASING PLAN - PHASE 4

APPROVED
 BY: CITY OF PUYALLUP
 ENGINEERING SERVICES
 DATE: _____
 NOTE: THIS APPROVAL IS VOID
 AFTER 1 YEAR FROM APPROVAL
 DATE.
 THE CITY WILL NOT BE
 RESPONSIBLE FOR ERRORS AND/OR
 OMISSIONS ON THESE PLANS.
 FIELD CONDITIONS MAY DICTATE
 CHANGES TO THESE PLANS AS
 DETERMINED BY THE
 ENGINEERING SERVICES
 MANAGER

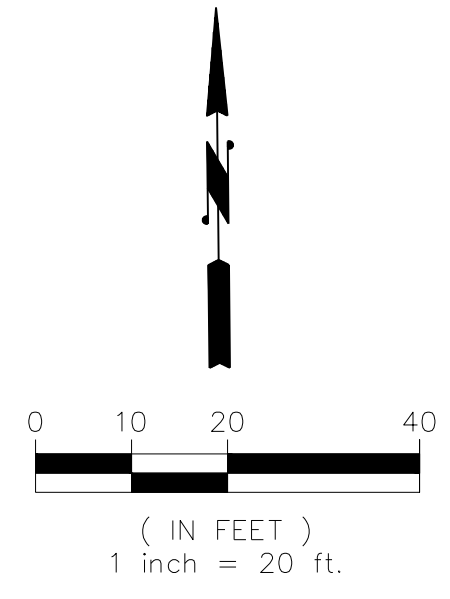
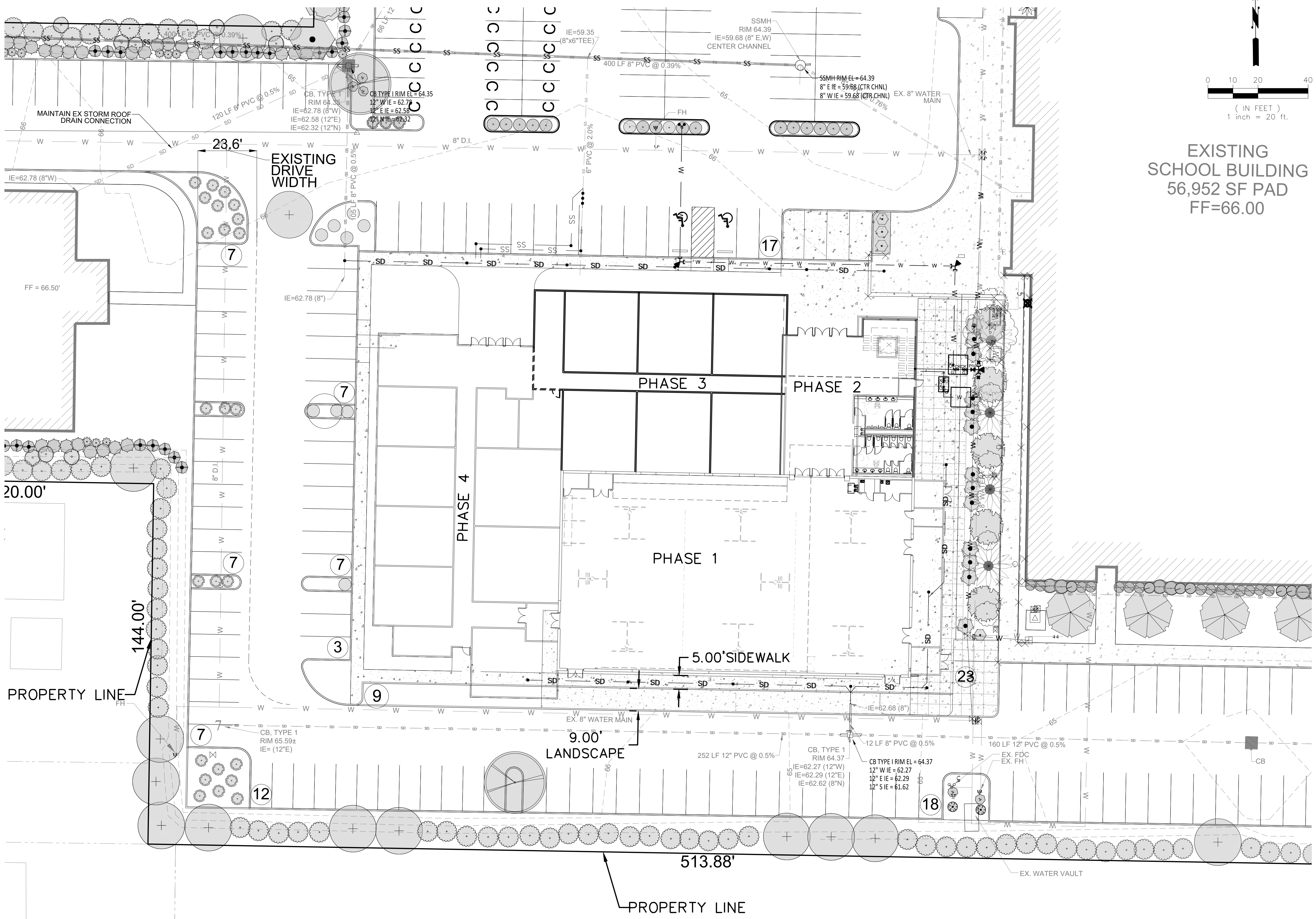
TITLE:
**Cascade Christian
 SITE PHASING
 PLAN - PHASE 4**
 Puyallup, WA

FOR:
**Cascade Christian School
 Don Johnson**
 815 21st St. SE
 Puyallup, WA 98372

Abbey Road Group
 Land Development
 Services Company, LLC
 923 SHAW ROAD, SUITE A
 PUYALLUP, WA 98372
 P.O. Box 1224, Puyallup, WA 98371
 (253) 435-3699, Fax (253) 446-3159



JOB #: 03-143
 DESIGNED BY: GIL HULLSMANN
 DEVELOPMENT REVIEW: PRB
 APPROVED BY: GH
 DRAFTED BY: AEG
 DATE: 20 MAY 2020
 SHEET: C2.4



EXISTING
 SCHOOL BUILDING
 56,952 SF PAD
 FF=66.00

REVISIONS:	CHK:	APR:	DATE:	PER:
BY:				

REVISIONS:	CHK:	APR:	DATE:	PER:
BY:				

File: T:\PROJECTS\FILES\ACTIVE\03-143 Cascade Christian - SR High School\Design\03-143 C2.0 Street Plan.dwg
 Plotted: 5/20/20 10:41 AM
 Plotted by: Aryn Graham