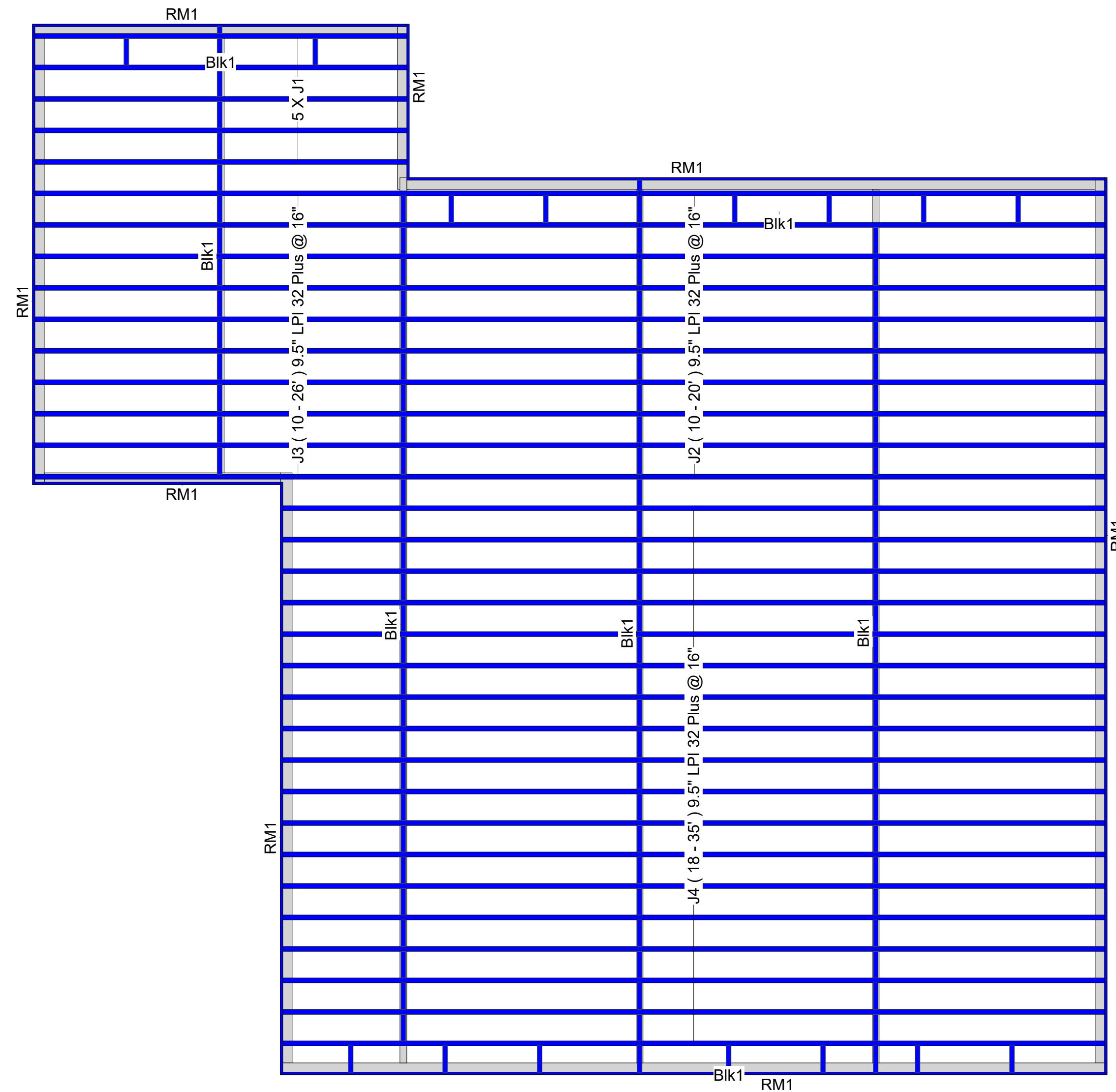


PRCA20220580

**\*CONTRACTOR SHALL VERIFY ALL NOTES, FRAMING CONDITIONS & MATERIALS PRIOR TO ORDER AND OR CONSTRUCTION\***  
**\*\*BBO (Beams By Others) are NOT INCLUDED in material list. Hangers required for BBO'S are NOT INCLUDED in material list\*\***



**MAIN FLOOR FRAMING**

**I Joist**

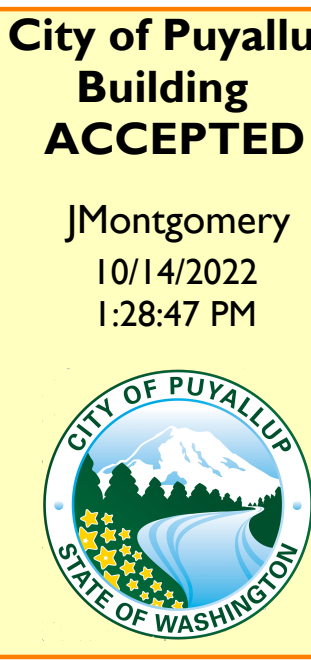
| Label | Description | Width | Depth | Qty | Plies | Pcs | Length |
|-------|-------------|-------|-------|-----|-------|-----|--------|
| J4    | LPI 32 Plus | 2.5   | 9.5   |     |       | 18  | 35-0-0 |
| J3    | LPI 32 Plus | 2.5   | 9.5   |     |       | 10  | 26-0-0 |
| J2    | LPI 32 Plus | 2.5   | 9.5   |     |       | 10  | 20-0-0 |
| J1    | LPI 32 Plus | 2.5   | 9.5   |     |       | 5   | 16-0-0 |

**Blocking**

| Label | Description | Width | Depth | Qty   | Plies | Pcs    | Length  |
|-------|-------------|-------|-------|-------|-------|--------|---------|
| Bik1  | LPI 32 Plus | 2.5   | 9.5   | LinFt |       | Varies | 126-0-0 |

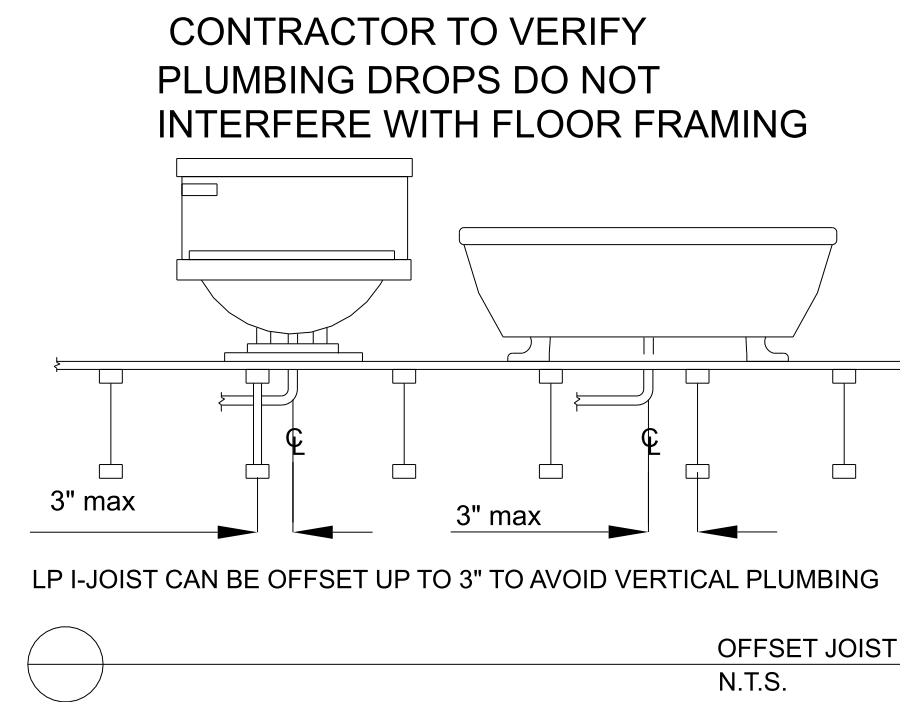
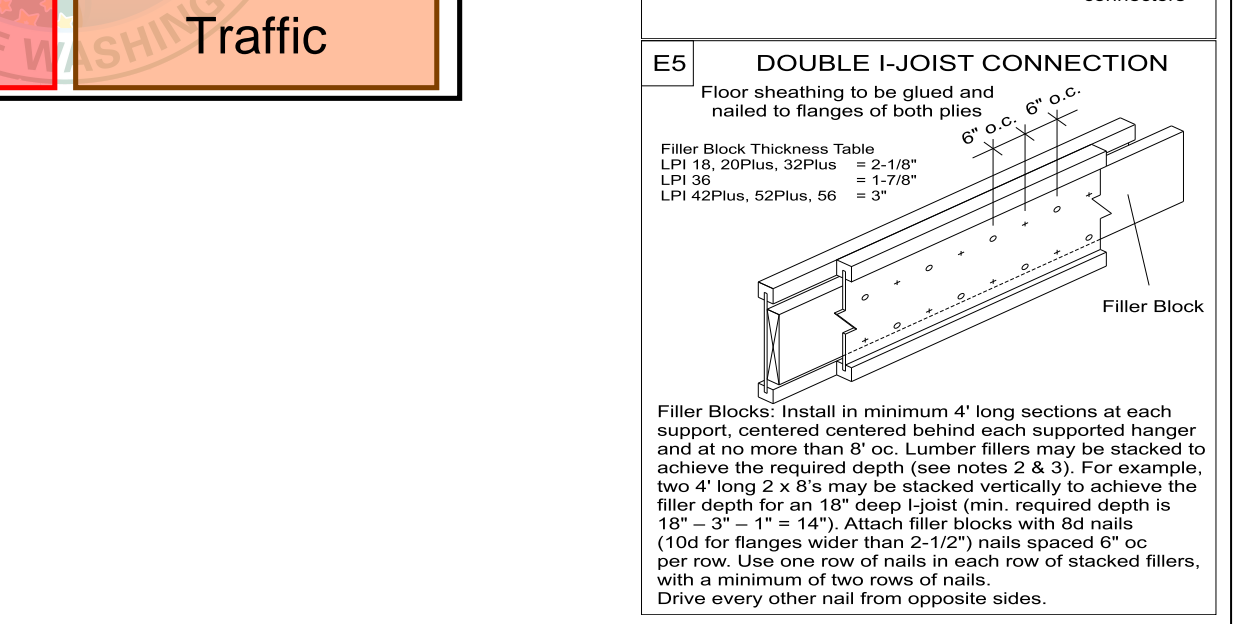
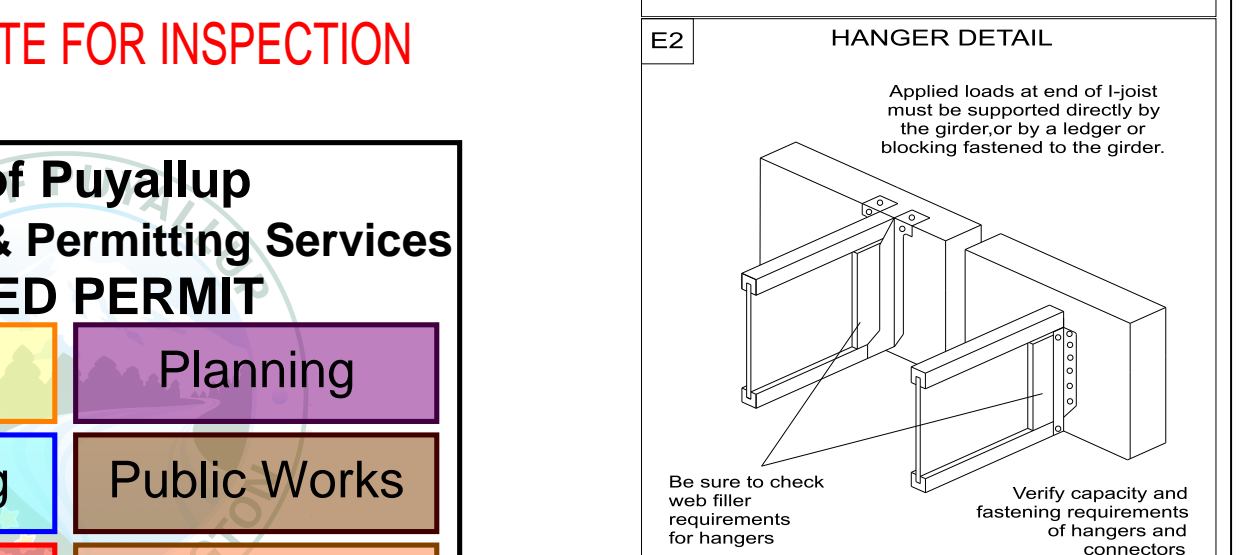
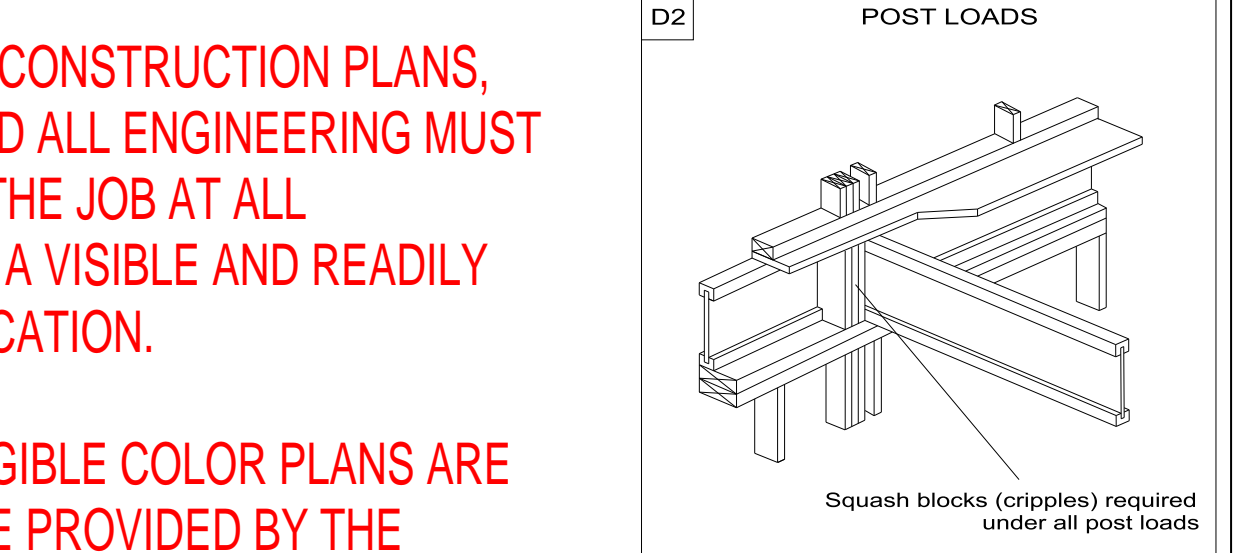
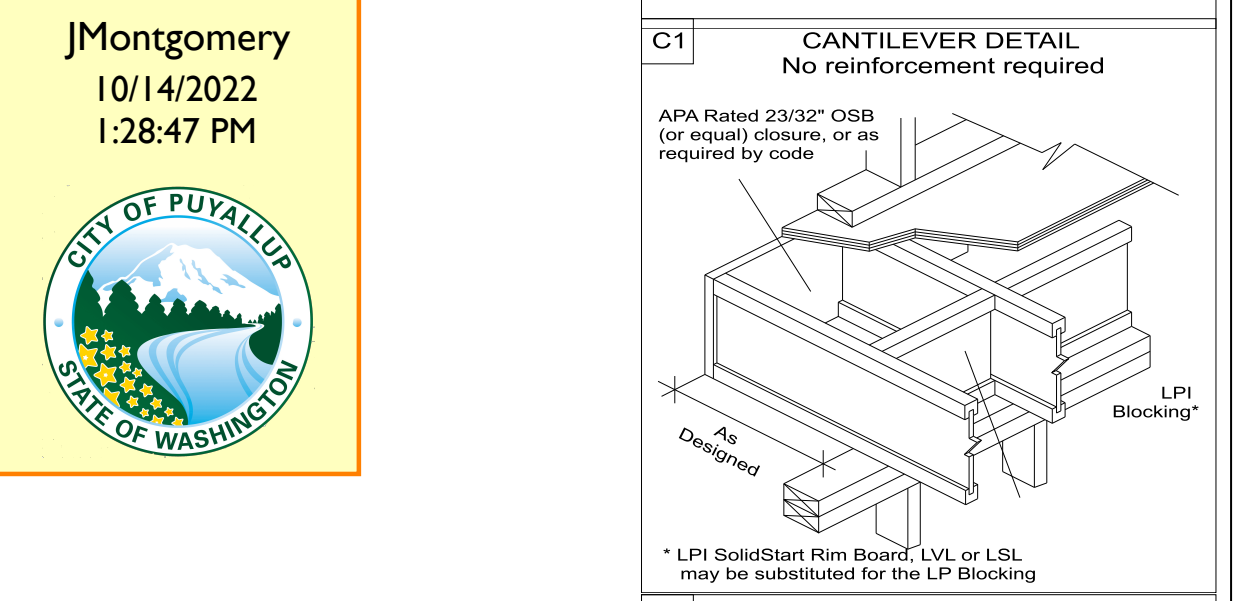
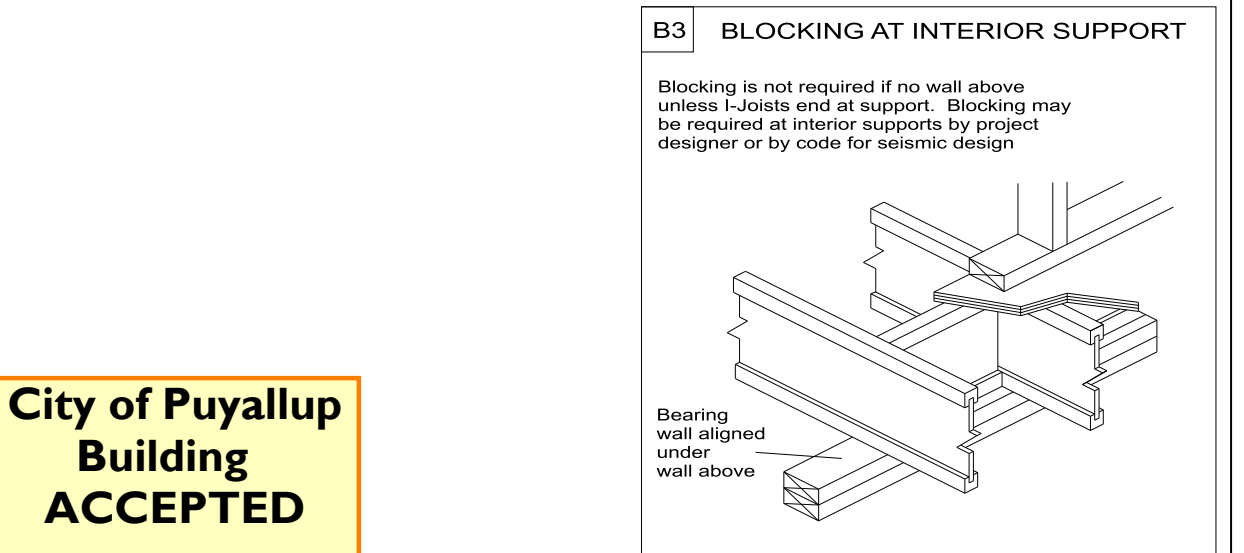
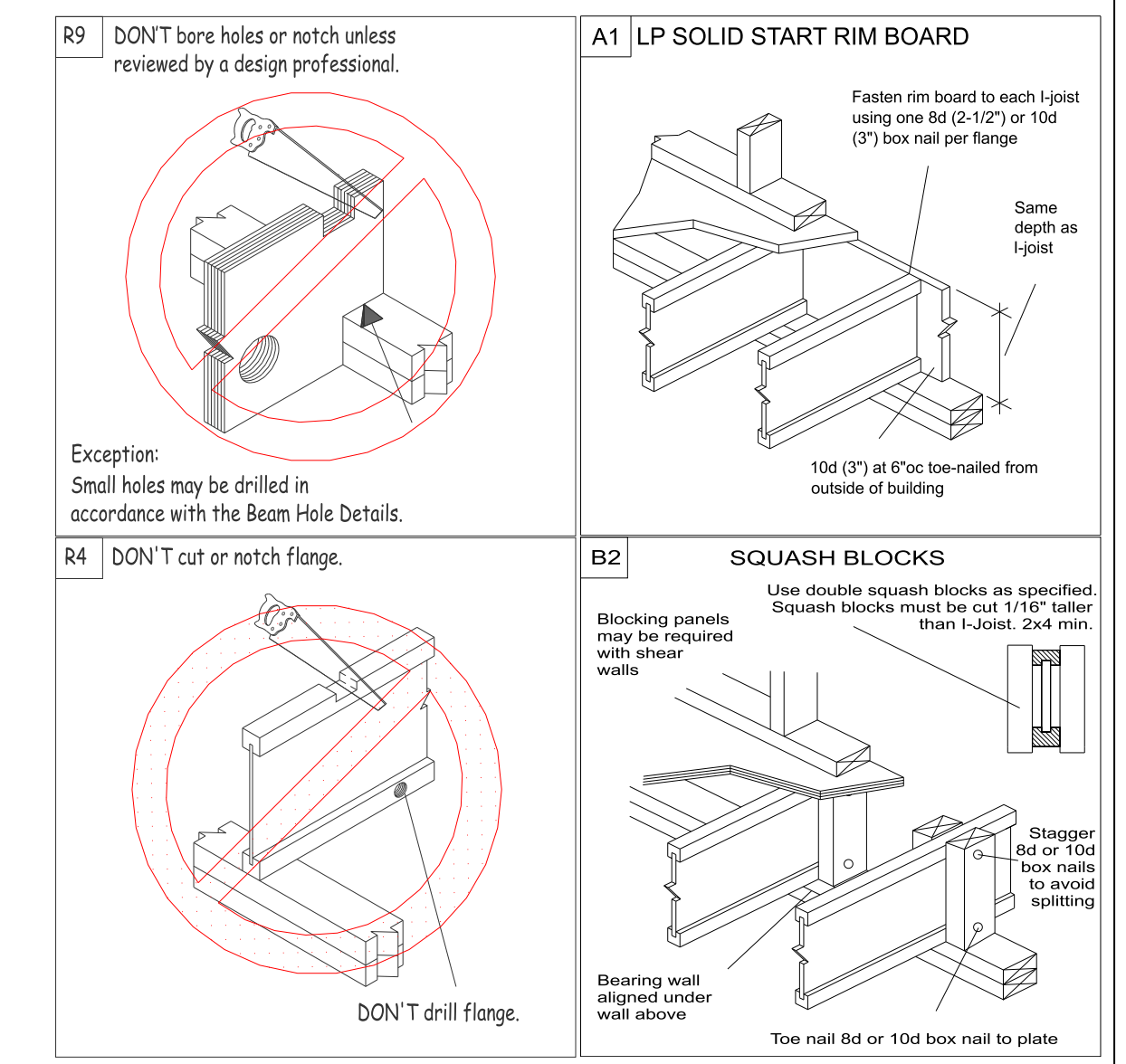
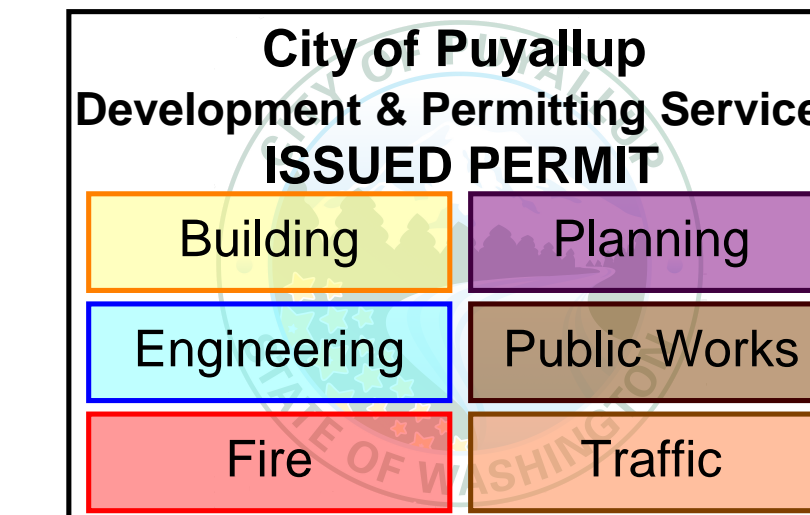
**Rim Board**

| Label | Description             | Width | Depth | Qty | Plies | Pcs | Length |
|-------|-------------------------|-------|-------|-----|-------|-----|--------|
| RM1   | LP 1.35E LSL 1.25 X 9.5 | 1.25  | 9.5   |     |       | 9   | 20-0-0 |



THE APPROVED CONSTRUCTION PLANS, DOCUMENTS AND ALL ENGINEERING MUST BE POSTED ON THE JOB AT ALL INSPECTIONS IN A VISIBLE AND READILY ACCESSIBLE LOCATION.

FULL SIZED LEDGIBLE COLOR PLANS ARE REQUIRED TO BE PROVIDED BY THE PERMITEE ON SITE FOR INSPECTION



INTERNATIONAL WOOD PRODUCTS  
 6277 CENTER ST SW  
 TUMWATER, WA 98561  
 877.830.9663

This drawing is a general interpretation of the construction drawings for this project and assumes the adequacy of the supporting structure. It is intended only as a general guide for the engineered wood products placement. All dimensions, quantities and details must be carefully checked, verified by comparison to the actual field conditions and are the responsibility of the client, architect/engineer and builder. Engineered floor system does not account for roof loading unless noted otherwise.

**Layout Name**  
BERGMAN\_CASCADE

**Dealer**  
GRAY LUMBER

**Sales Rep**  
MIKE MCFADDEN

**Project**  
2209037-01

**Designer**  
GW

**Created**  
September 20, 2022

**Important Notes**

Review Manufacturers' installation guide for additional structural details where necessary.

Do Not cut or notch top or bottom flanges of joists to provide clearance for plumbing fixtures. Offset and/or install additional joists to provide clearance.

All dimensional stock "Dropped headers" by others

All Steel beams, angles and columns by others

Version 21.80.417 Powered by Struct! Dataset: 22061001.1

This placement plan is to be used as an installation guide only. It is meant to be used in conjunction with the manufacturers installation guide, the architectural and structural drawings, and not to replace them.