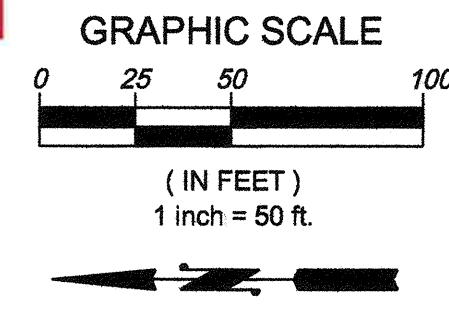


CASCADE CHRISTIAN
SEC. 35|TWP. 20|RGE. 04, W.M.
21ST ST ROAD IMPROVEMENT PLAN

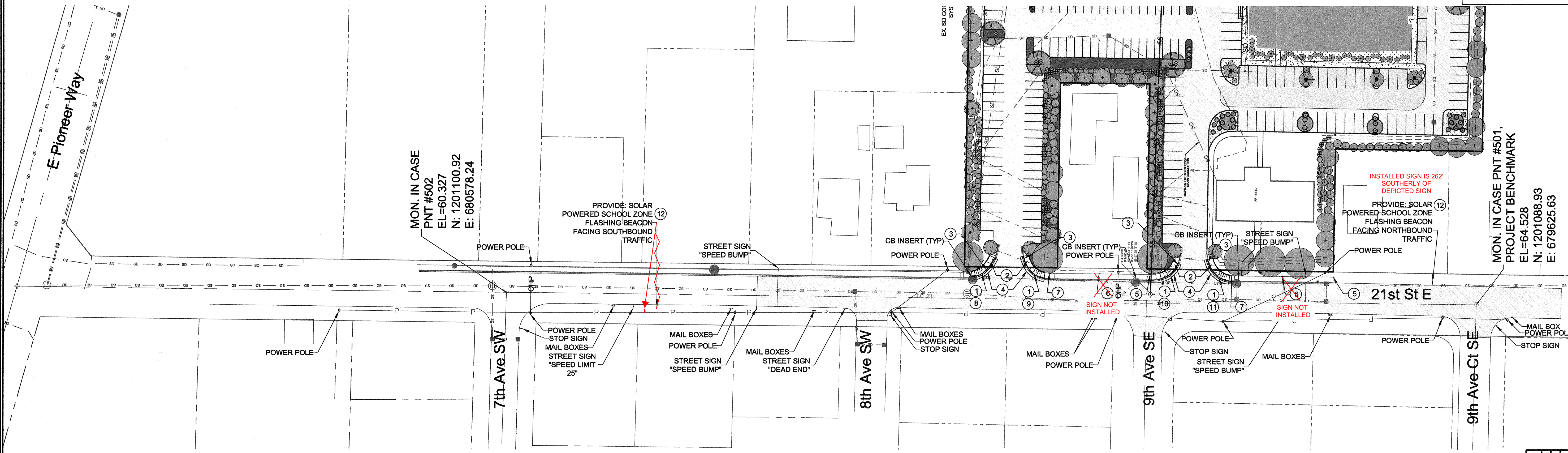
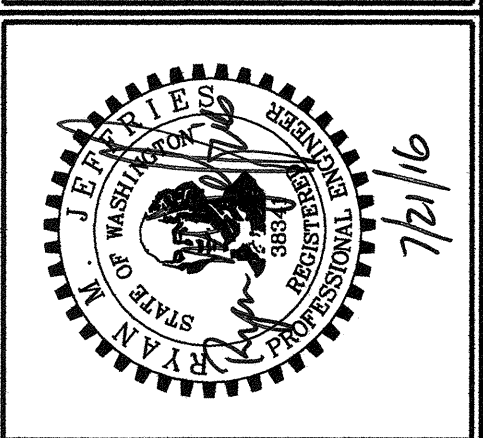
RECORD DRAWING
7/16/2021
ENGINEER/LAND SURVEYORS SIGNATURE DATE



APPROVED
BY: [Signature]
CITY OF PUYALLUP
ENGINEERING SERVICES
DATE: 8/4/2016
NOTE: THIS APPROVAL IS VOID AFTER 1 YEAR FROM APPROVAL DATE.
THE CITY WILL NOT BE RESPONSIBLE FOR ERRORS AND/OR OMISSIONS ON THESE PLANS. FIELD CONDITIONS MAY DICTATE CHANGES TO THESE PLANS AS DETERMINED BY THE ENGINEERING SERVICES MANAGER.

TITLE:
Cascade Christian
Off Site Improvement Set
21st St Road Improvement Plan
Puyallup, WA

FOR:
Cascade Christian School
Don Johnson
815 21st St. SE
Puyallup, WA 98372



NOTES:

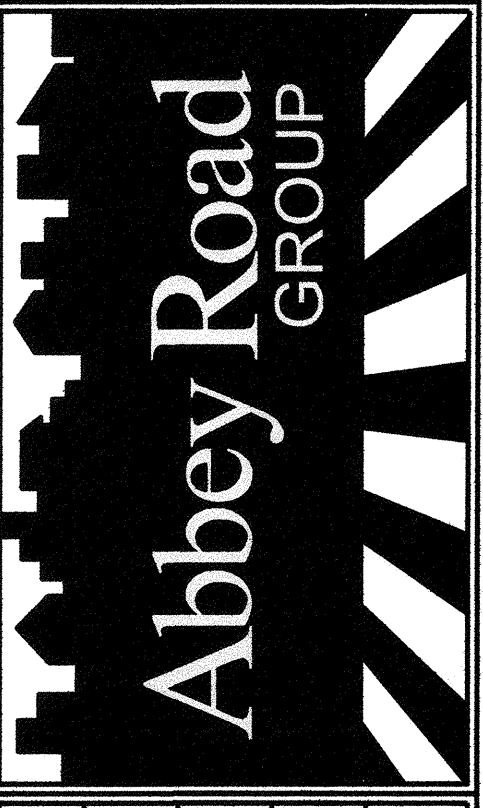
1. CONTRACTOR SHALL REPAIR OR RESTORE DAMAGED OR DEFACED CURBS OR SIDEWALKS TO CITY STANDARDS IF DAMAGED DURING CONSTRUCTION.
2. CONTRACTOR SHALL PROVIDE CATCH BASIN INSERTS PER DETAIL SHEET 7 ON EXISTING CATCH BASINS ADJACENT TO IMPROVEMENTS AT CURB RAMPS AS SHOWN.

CONSTRUCTION KEY NOTES:

1. CONSTRUCT ADA RAMPS PER WSDOT STD DETAIL F-40.12-02 TYPE PARALLEL A, SHEET 7. SEE ALSO RAMP GRADING DETAILS SHEET 4.
2. CONSTRUCT SIDEWALK WITHOUT PLANTING STRIP PER STD DETAIL 01.02.01 SHEET 7.
3. CONSTRUCT CURB AND GUTTER PER STD DETAIL 01.02.09 SHEET 7.
4. CONSTRUCT STREET PATCH PER STD DETAIL 01.01.20 SHEET 7.
5. CONSTRUCT NO PARKING SIGN NP-1 PER DETAIL SHEET 6.
6. CONSTRUCT NO PARKING SIGN NP-2 PER DETAIL SHEET 6.
7. CONSTRUCT NO PARKING SIGN NP-3 PER DETAIL SHEET 6.
8. SEE RAMP GRADING DETAIL # 1 SHEET 4.
9. SEE RAMP GRADING DETAIL # 2 SHEET 4.
10. SEE RAMP GRADING DETAIL # 3 SHEET 4.
11. SEE RAMP GRADING DETAIL # 4 SHEET 4.
12. SEE SOLAR POWERED SCHOOL ZONE FLASHING BEACON SYSTEM NOTES SHEET 6. FLASHING BEACON LOCATIONS SHALL BE FIELD VERIFIED WHILE INSTALLING. CONTACT CITY TO FIELD CHECK. CITY OF PUYALLUP WILL PROGRAM THE SCHOOL FLASHER OPERATION AND TIMING, BUT ARE TO BE MAINTAINED BY THE SCHOOL.

REVISIONS:	CHK:	APR:	DATE:	PER:
BY:	RAU	RAU	07/21/16	REVISED PER CITY COMMENTS DATED JULY 20, 2016

Abbey Road Group
Land Development
Services Company, LLC
923 SHAW ROAD, SUITE A
PUYALLUP, WA 98372
P.O. Box 1224, Puyallup, WA 98371
(253) 435-3699, Fax (253) 446-3159

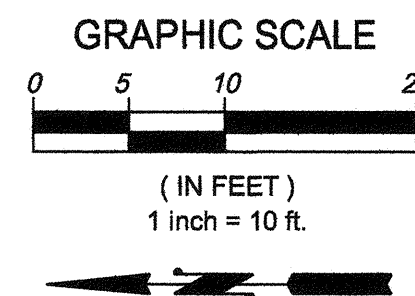


JOB #: 03-143
DESIGNED BY: Ryan Jeffries
DEVELOPMENT REVIEW: RJ
APPROVED BY: Ryan Jeffries
DRAFTED BY: Ryan Jeffries
DATE: 21 July 2016
SHEET: 03

File: S:\PROJECTS\FILES\ACTIVE\03-143 Cascade Christian - 21st St High School\Design\2016 Drawings\016 Off Site Improvement\03-143 Off Site Plans.dwg
Plotted By: Ryan Jeffries
Plotted: 7/21/2016 3:22 PM

CASCADE CHRISTIAN
SEC. 35|TWP. 20|RGE. 04, W.M.
21ST ST SITE ENTRANCE PLAN

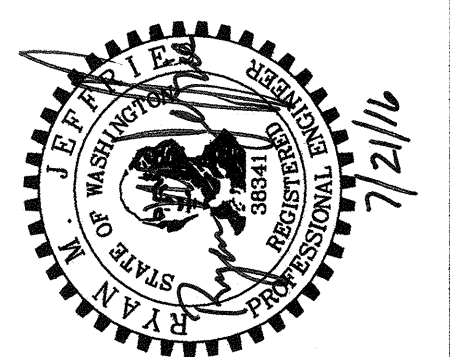
RECORD DRAWING
7/10/2021
ENGINEER/LAND SURVEYORS SIGNATURE DATE



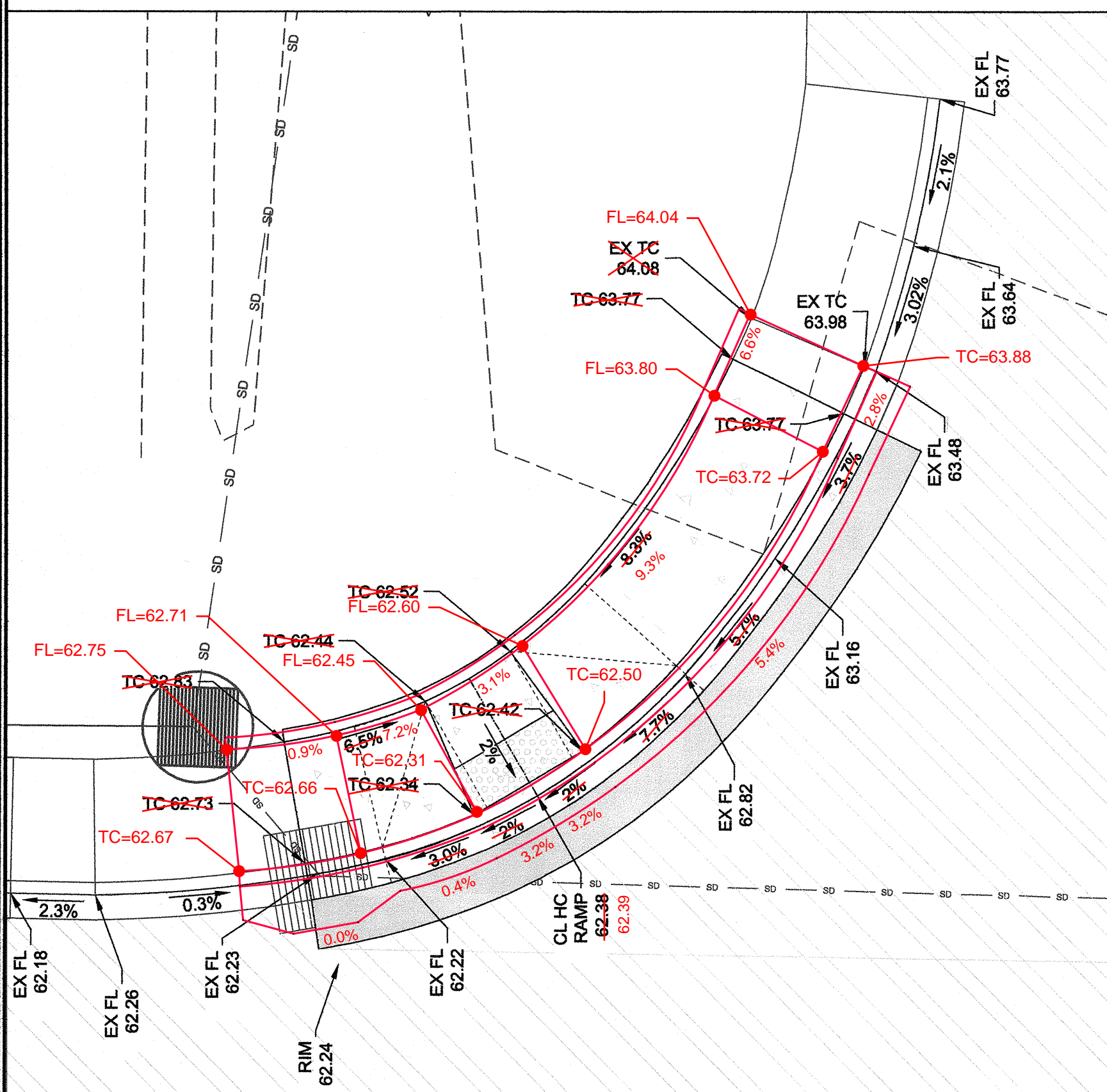
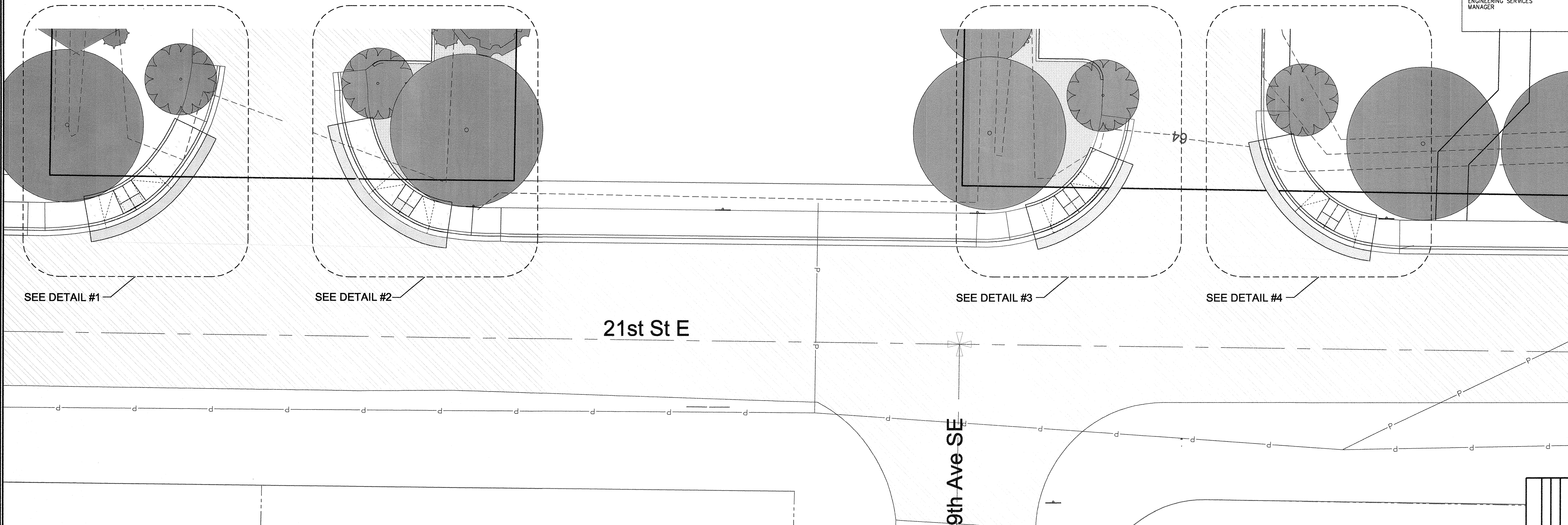
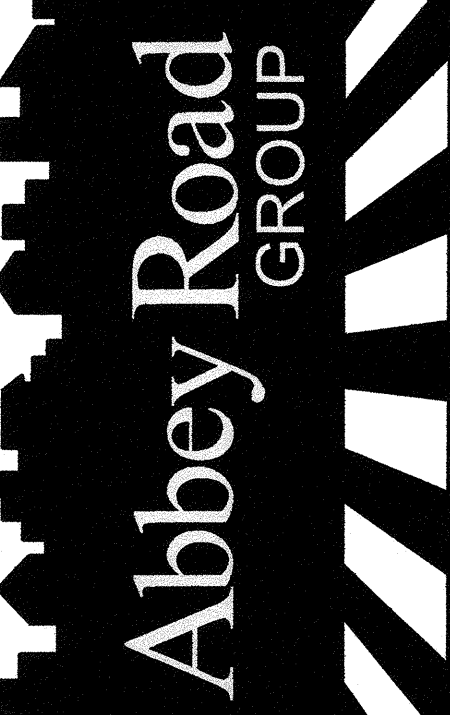
APPROVED
BY: [Signature]
CITY OF PUYALLUP
ENGINEERING SERVICES
DATE: 8/4/2016
NOTE: THIS APPROVAL IS VOID
AFTER 1 YEAR FROM APPROVAL
DATE.
THE CITY WILL NOT BE
RESPONSIBLE FOR ERRORS AND/OR
OMISSIONS ON THESE PLANS.
FIELD CONDITIONS MAY DICTATE
CHANGES TO THESE PLANS AS
DETERMINED BY THE
ENGINEERING SERVICES
MANAGER

Cascade Christian
Off Site Improvement Set
21st St Site Entrance Plan
Puyallup, WA

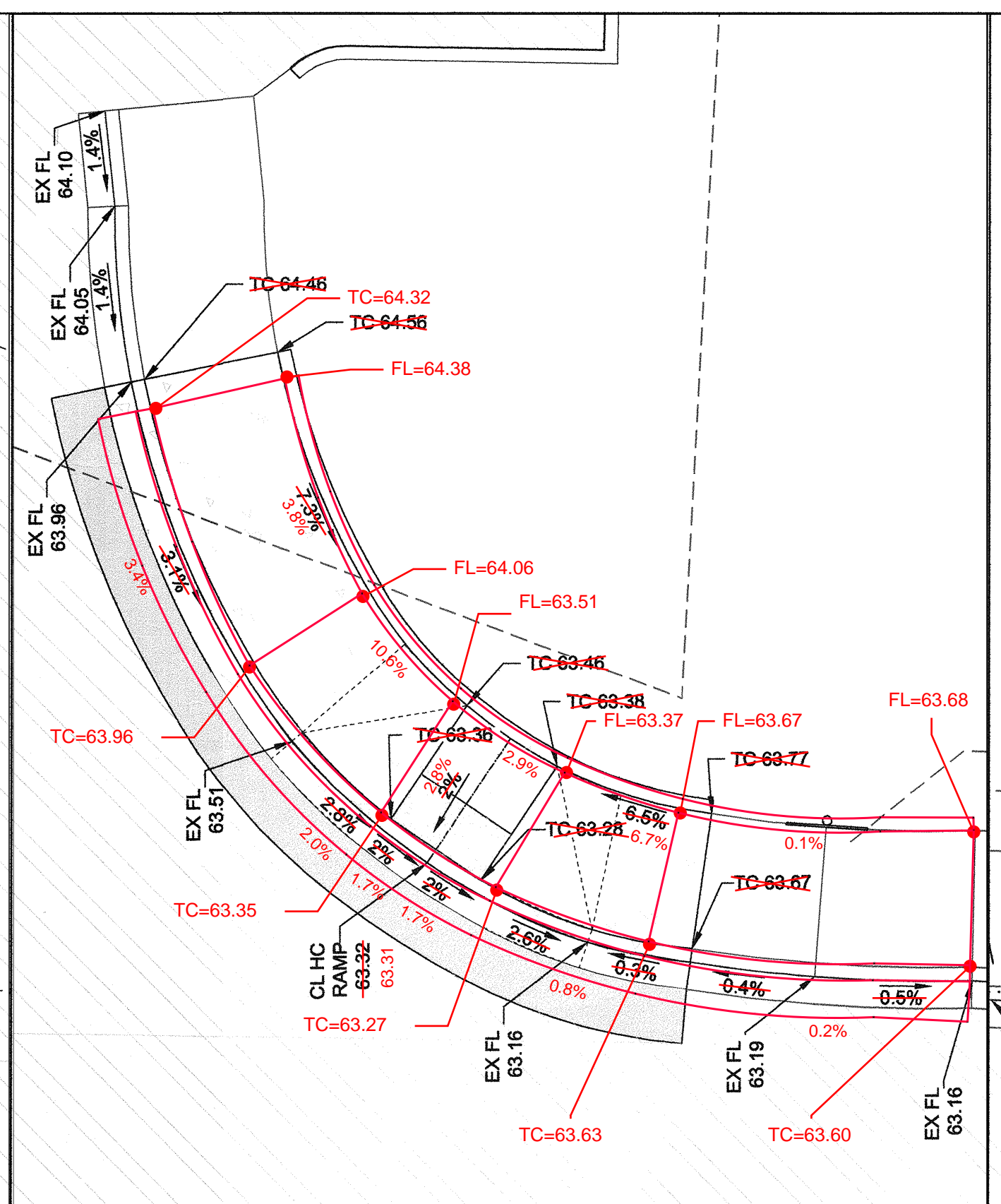
Cascade Christian School
Don Johnson
815 21st St. SE
Puyallup, WA 98372



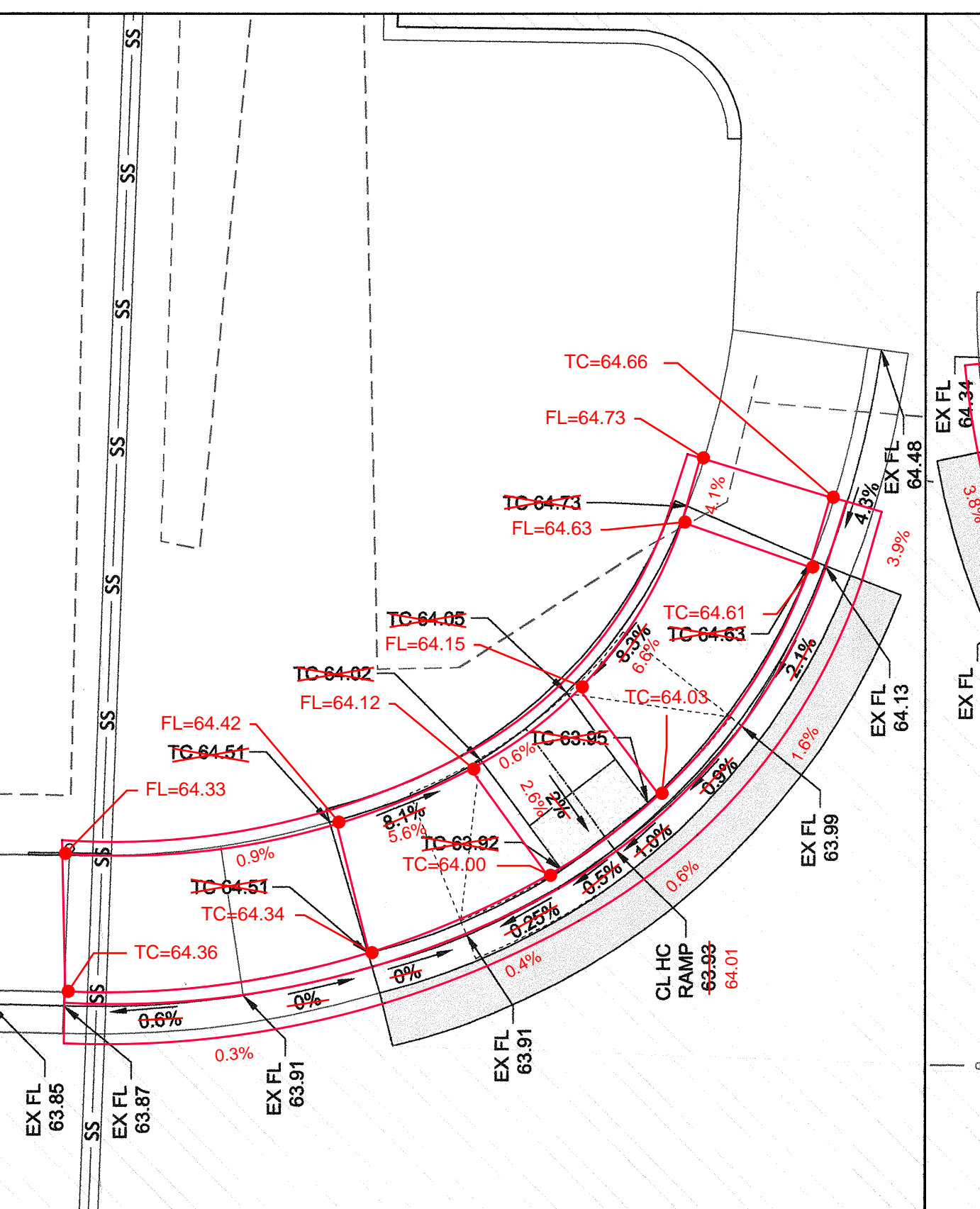
Abbey Road Group
Land Development
Services Company, LLC
923 SHAW ROAD, SUITE A
PUYALLUP, WA 98372
P.O. Box 1224, Puyallup, WA 98371
(253) 435-3699, Fax (253) 446-3159



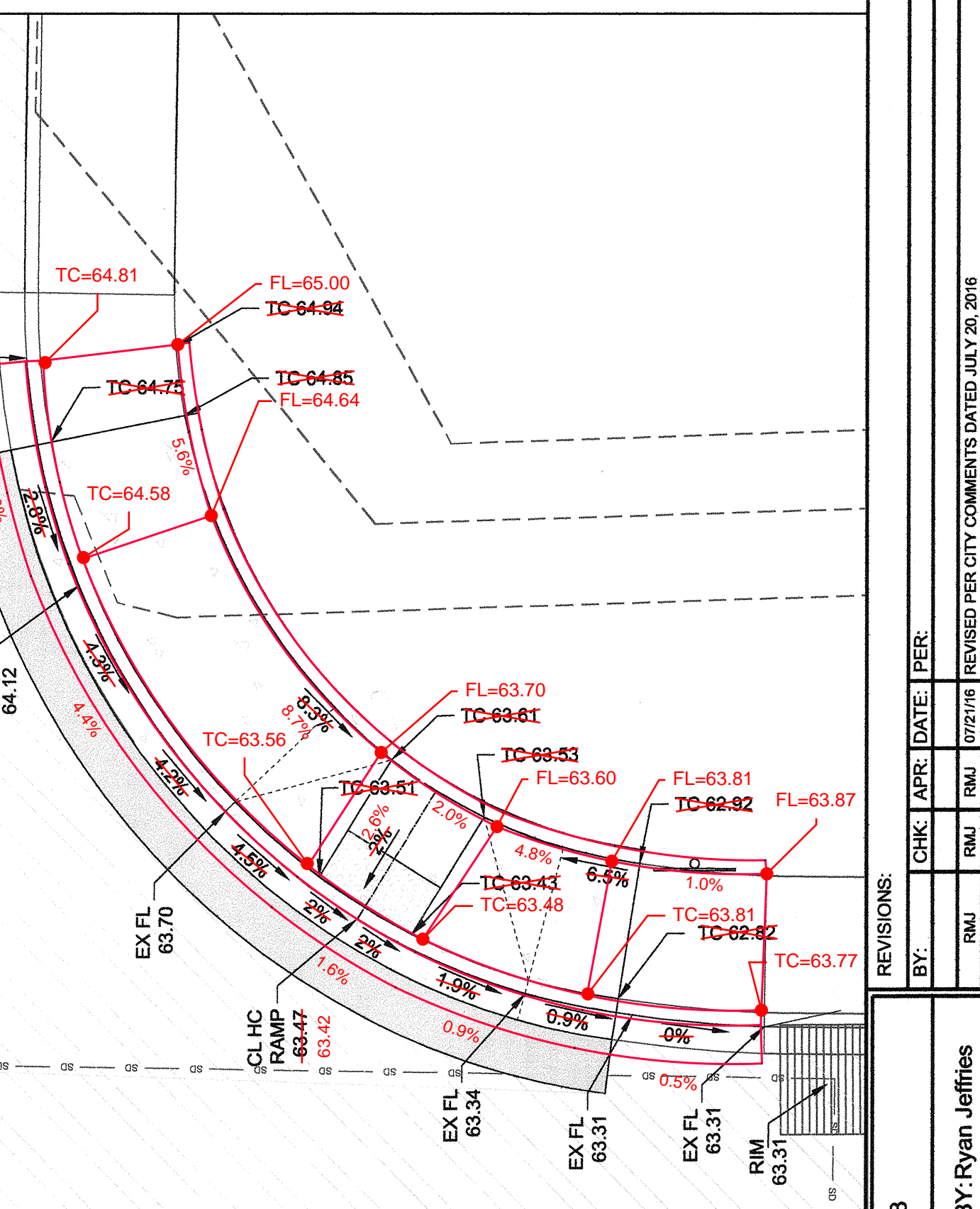
CURB RAMP DETAIL #1
SCALE: 1"=5'



CURB RAMP DETAIL #2
SCALE: 1"=5'



CURB RAMP DETAIL #3
SCALE: 1"=5'



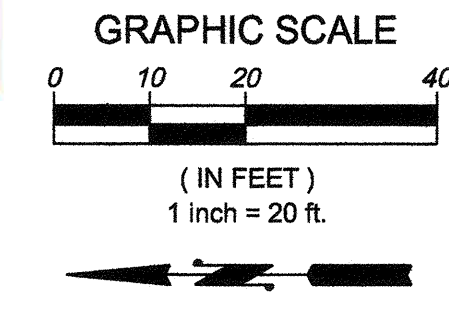
CURB RAMP DETAIL #4
SCALE: 1"=5'

REVISIONS:	BY:	CHK:	APP:	DATE:	PER:
	RAJ	RAJ	RAJ	07/21/16	REVISED PER CITY COMMENTS DATED JULY 20, 2016
JOB #: 03-143	DESIGNED BY: Ryan Jeffries	DEVELOPMENT REVIEW: RJ	APPROVED BY: Ryan Jeffries	DRAFTED BY: Ryan Jeffries	DATE: 21 July 2016
					SHEET: 04

File: S:\PROJECTS\FILES\ACTIVE\03-143 Cascade Christian, JR SR High School\Drawings\01016 Drawings\01016 Off Site Improvement\03-143 Off Site Plan.rvt
Printed: 7/21/2016 3:25 PM
Prepared by: Ryan Jeffries

CASCADE CHRISTIAN
SEC. 35\TWP. 20\RGE. 04, W.M.
25TH ST ROAD IMPROVEMENT PLAN

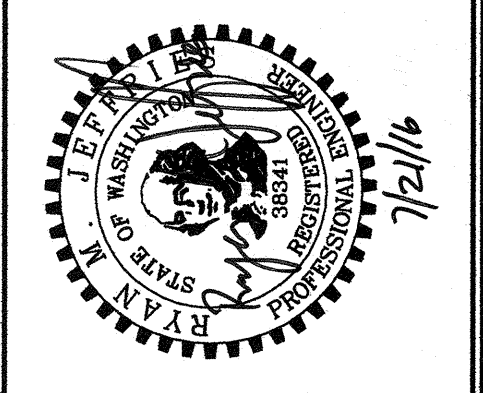
RECORD DRAWING
7/16/2021
ENGINEER/LAND SURVEYORS SIGNATURE DATE



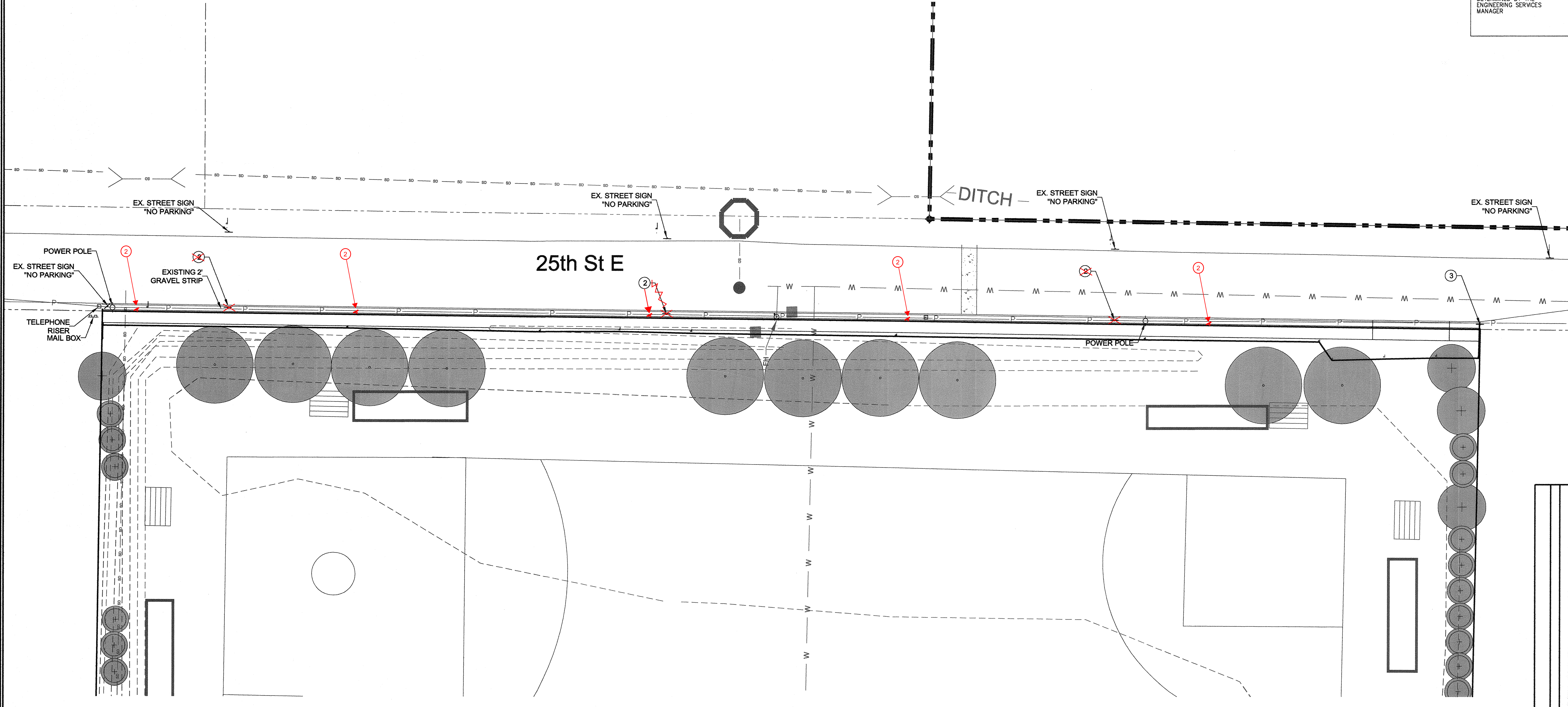
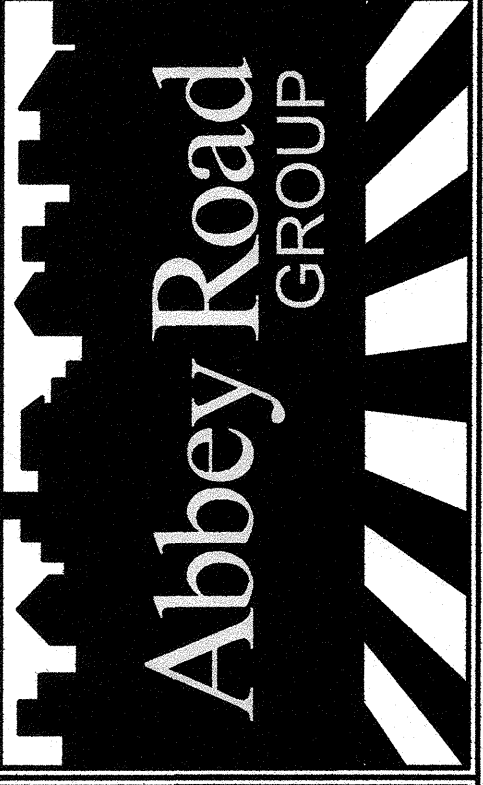
APPROVED
BY: [Signature]
CITY OF PUYALLUP
ENGINEERING SERVICES
DATE: 8/4/2016
NOTE: THIS APPROVAL IS VOID AFTER 1 YEAR FROM APPROVAL DATE.
THE CITY WILL NOT BE RESPONSIBLE FOR ERRORS AND/OR OMISSIONS ON THESE PLANS. FIELD CONDITIONS MAY DICTATE CHANGES TO THESE PLANS AS DETERMINED BY THE ENGINEERING SERVICES MANAGER.

TITLE:
Cascade Christian
Off Site Improvement Set
25th St Road Improvement Plan
Puyallup, WA

FOR:
Cascade Christian School
Don Johnson
815 21st St. SE
Puyallup, WA 98372



Abbey Road Group
Land Development
Services Company, LLC
923 SHAW ROAD, SUITE A
PUYALLUP, WA 98372
P.O. Box 1224, Puyallup, WA 98371
(253) 435-3699, Fax (253) 446-3159



NOTES:
1. CONTRACTOR SHALL REPAIR OR RESTORE DAMAGED OR DEFACED CURBS OR SIDEWALKS TO CITY STANDARDS IF DAMAGED DURING CONSTRUCTION.

- CONSTRUCTION KEY NOTES:
- ① CONSTRUCT NO PARKING SIGN NP-1 PER DETAIL SHEET 6.
 - ② CONSTRUCT NO PARKING SIGN NP-2 PER DETAIL SHEET 6.
 - ③ CONSTRUCT NO PARKING SIGN NP-3 PER DETAIL SHEET 6.

REVISIONS:	CHK:	APR:	DATE:	PER:
	RMJ	RMJ	07/21/16	REVISED PER CITY COMMENTS DATED JULY 20, 2016
	RMJ			
	RMJ			

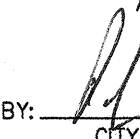
JOB #: 03-143
DESIGNED BY: Ryan Jeffries
DEVELOPMENT REVIEW: RJ
APPROVED BY: Ryan Jeffries
DRAFTED BY: Ryan Jeffries
DATE: 21 July 2016
SHEET: 05

File: S:\PROJECTS FILES (ACTIVE)\03-143 Cascade Christian - R SR 143\ School\Design\2016 Drawings\0216 Off Site Improvement\03-143 Off Site Plans.dwg
Plotted By: Ryan Jeffries
Plotted: 7/21/2016 3:22 PM

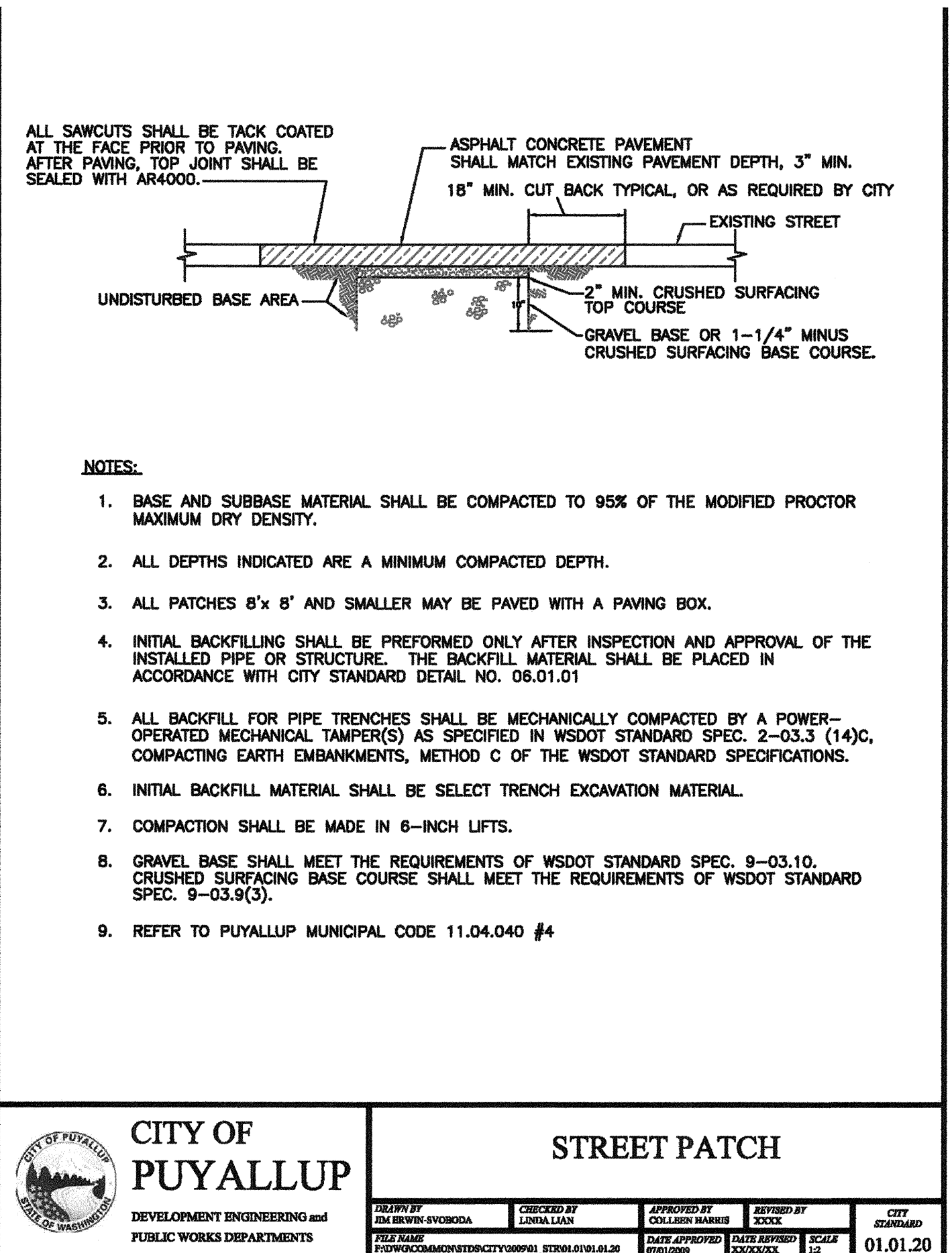
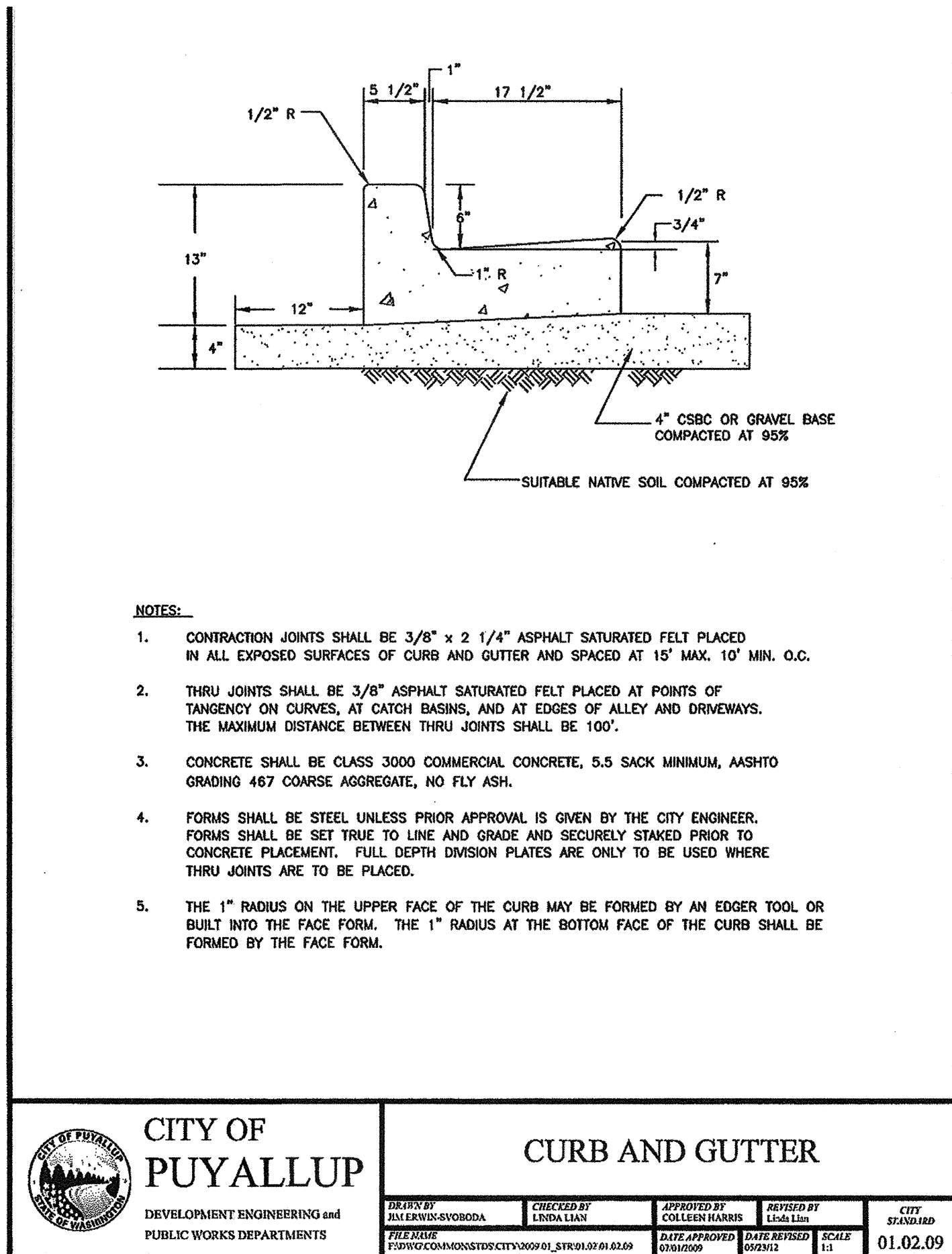
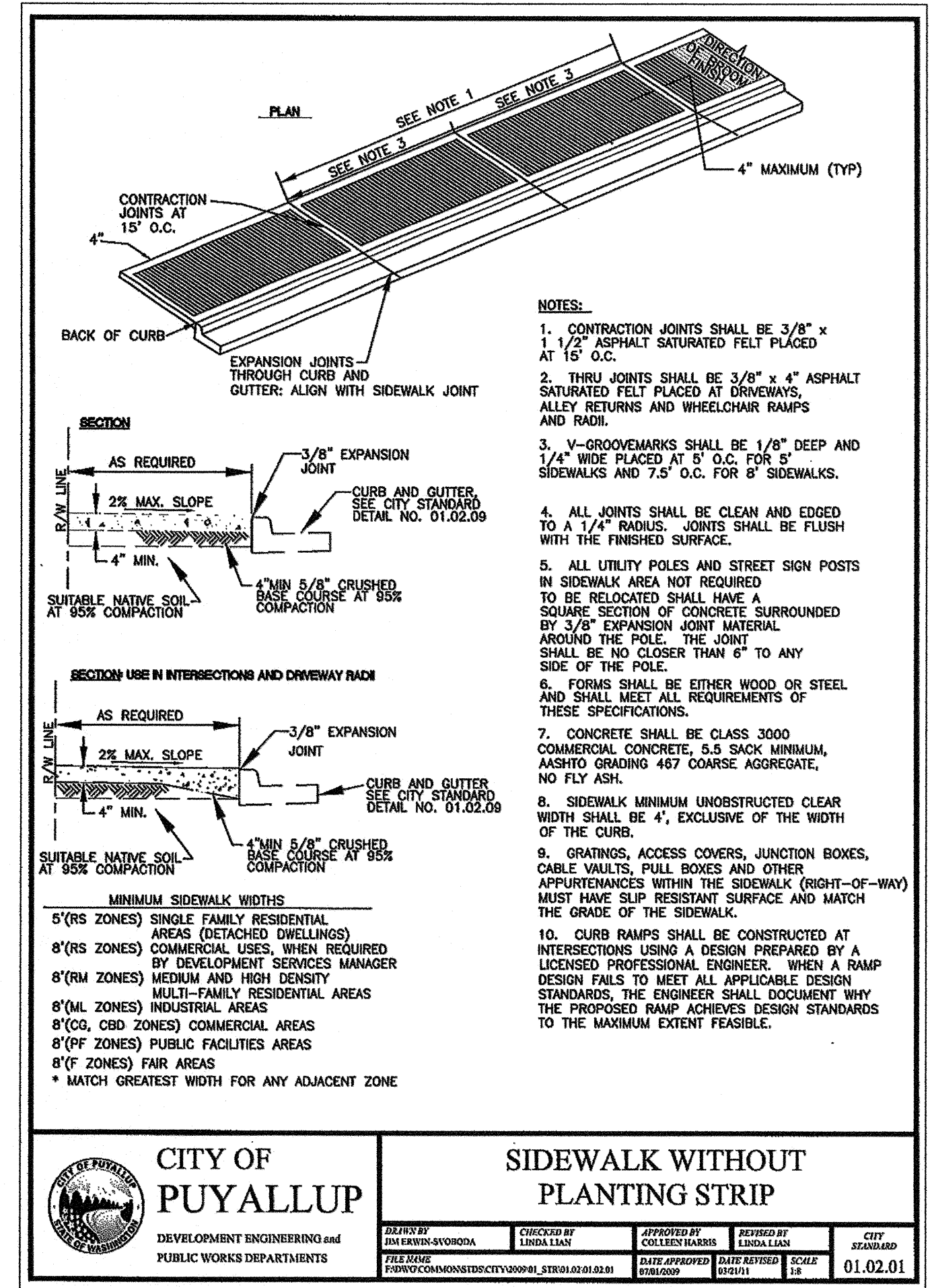
CASCADE CHRISTIAN SEC. 35\TWP. 20\RGE. 04, W.M. NOTES & DETAILS

RECORD DRAWING

 ENGINEER/LAND SURVEYORS SIGNATURE DATE 7/16/2021

APPROVED
 BY: 
 CITY OF PUYALLUP
 ENGINEERING SERVICES
 DATE 8/4/2016
 NOTE: THIS APPROVAL IS VOID AFTER 1 YEAR FROM APPROVAL DATE.
 THE CITY WILL NOT BE RESPONSIBLE FOR ERRORS AND/OR OMISSIONS ON THESE PLANS. FIELD CONDITIONS MAY DICTATE CHANGES TO THESE PLANS AS DETERMINED BY THE ENGINEERING SERVICES MANAGER.

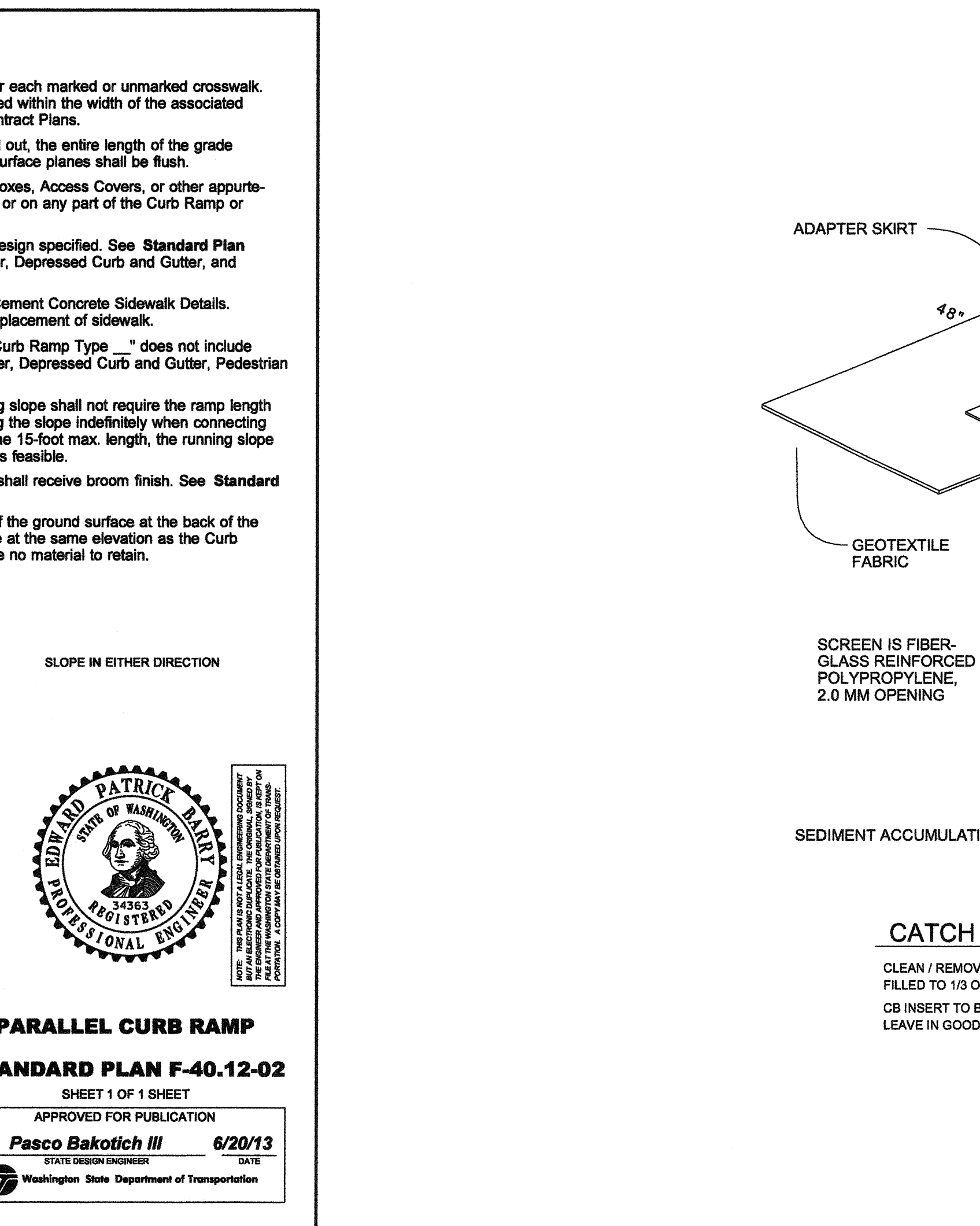
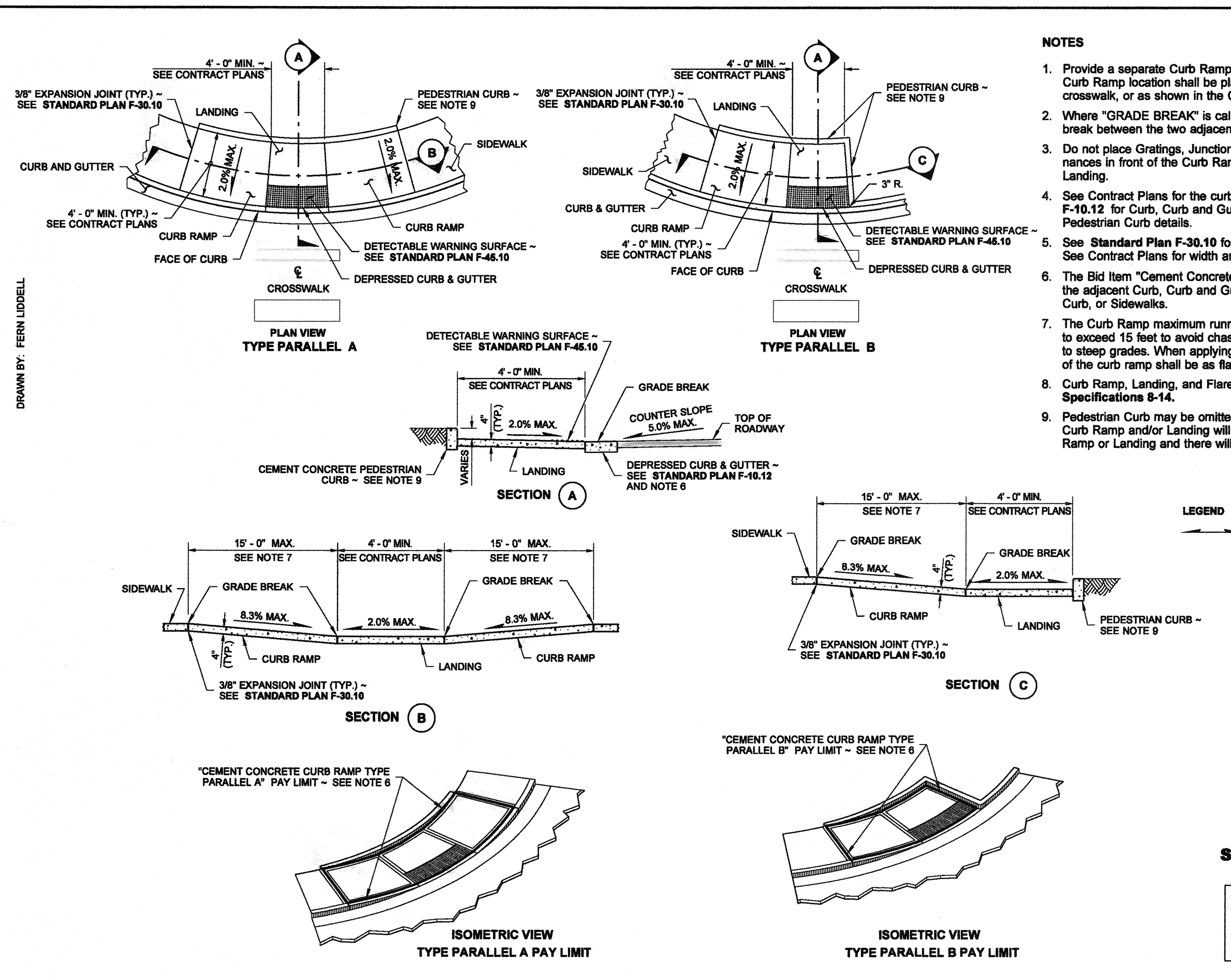
Cascade Christian
 Off Site Improvement Set
 Notes & Details
 TITLE: Cascade Christian School
 Don Johnson
 815 21st St. SE
 Puyallup, WA 98372



CITY OF PUYALLUP
 DEVELOPMENT ENGINEERING and PUBLIC WORKS DEPARTMENTS
 DRAWN BY: DIM/REVS/03/0000A
 CHECKED BY: LINDA LANE
 APPROVED BY: COLLEEN HANSEN
 DATE APPROVED: 01/02/09
 SCALE: 1" = 12'
 CITY STANDARD: 01.02.01

CITY OF PUYALLUP
 DEVELOPMENT ENGINEERING and PUBLIC WORKS DEPARTMENTS
 DRAWN BY: DIM/REVS/03/0000A
 CHECKED BY: LINDA LANE
 APPROVED BY: COLLEEN HANSEN
 DATE APPROVED: 01/02/09
 SCALE: 1" = 12'
 CITY STANDARD: 01.02.09

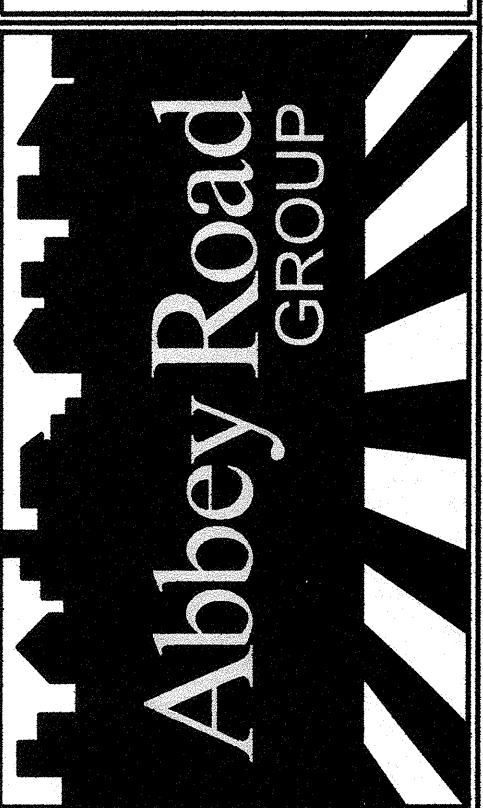
CITY OF PUYALLUP
 DEVELOPMENT ENGINEERING and PUBLIC WORKS DEPARTMENTS
 DRAWN BY: DIM/REVS/03/0000A
 CHECKED BY: LINDA LANE
 APPROVED BY: COLLEEN HANSEN
 DATE APPROVED: 01/02/09
 SCALE: 1" = 12'
 CITY STANDARD: 01.01.20



**PARALLEL CURB RAMP
 STANDARD PLAN F-40.12-02
 SHEET 1 OF 1 SHEET**
 APPROVED FOR PUBLICATION
 Pasco Bakotich III 6/20/13
 STATE DESIGN ENGINEER
 Washington State Department of Transportation



Abbey Road Group
 Land Development
 Services Company, LLC
 923 SHAW ROAD, SUITE A
 PUYALLUP, WA 98372
 P.O. Box 1224, Puyallup, WA 98371
 (253) 435-3699, Fax (253) 446-3159



REVISIONS:	CHK:	APR:	DATE:	PER:
BY:	RAJ	RAJ	07/27/16	REVISOR PER CITY COMMENTS DATED JULY 20, 2016
	RAJ	RAJ		
	RAJ	RAJ		
	RAJ	RAJ		

File: S:\PROJECTS\FILES\ACTIVE\2016-143 Cascade Christian - SR High School\Drawings\2016 Drawings\2016 Off Site Improvement\03-143_Notes & Details.dwg
 Plotted By: Ryan Jeffries
 7/27/2016 3:48 PM