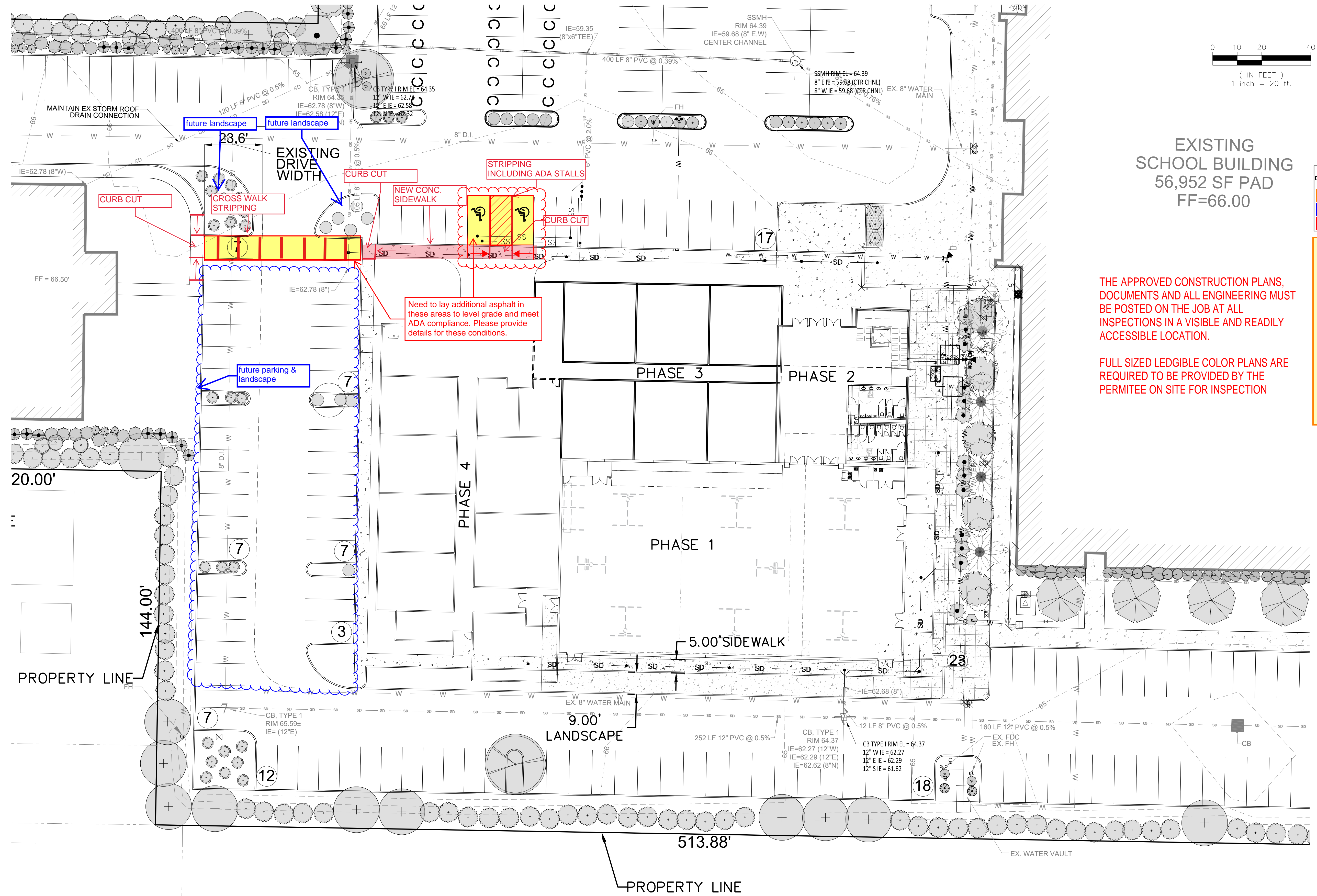


© 2020 Abbey Road Group Land Development Services Company, LLC, Puyallup, WA All rights reserved.
 These drawings, plans, specifications and other documents, including those in electronic form, are owned by Abbey Road Group Land Development Services Company, LLC and it retains all common law, statutory and other reserved rights, including copyrights.
 These drawings, plans, specifications and other documents cannot be copied, distributed, submitted to others (including governmental agencies and lenders) without the express written consent of Abbey Road Group Land Development Services Company, LLC.

CASCADE CHRISTIAN SEC. 35\TWP. 20\RGE. 04, W.M. MASTER SITE PLAN

REVISIONS TO MEET ADA REQUIREMENTS

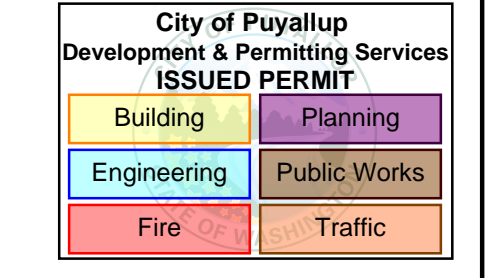
APPROVED
 BY: CITY OF PUYALLUP
 ENGINEERING SERVICES
 DATE: _____
 NOTE: THIS APPROVAL IS VOID
 AFTER 1 YEAR FROM APPROVAL
 DATE.
 THE CITY WILL NOT BE
 RESPONSIBLE FOR ERRORS AND/OR
 OMISSIONS ON THESE PLANS.
 FIELD CONDITIONS MAY DICTATE
 CHANGES TO THESE PLANS AS
 DETERMINED BY THE
 ENGINEERING SERVICES
 MANAGER



EXISTING
 SCHOOL BUILDING
 56,952 SF PAD
 FF=66.00

THE APPROVED CONSTRUCTION PLANS,
 DOCUMENTS AND ALL ENGINEERING MUST
 BE POSTED ON THE JOB AT ALL
 INSPECTIONS IN A VISIBLE AND READILY
 ACCESSIBLE LOCATION.

FULL SIZED LEDGIBLE COLOR PLANS ARE
 REQUIRED TO BE PROVIDED BY THE
 PERMITEE ON SITE FOR INSPECTION



**City of Puyallup
 Building & Permitting Services
 ISSUED PERMIT**

JMontgomery
 01/31/2023
 8:43:32 AM

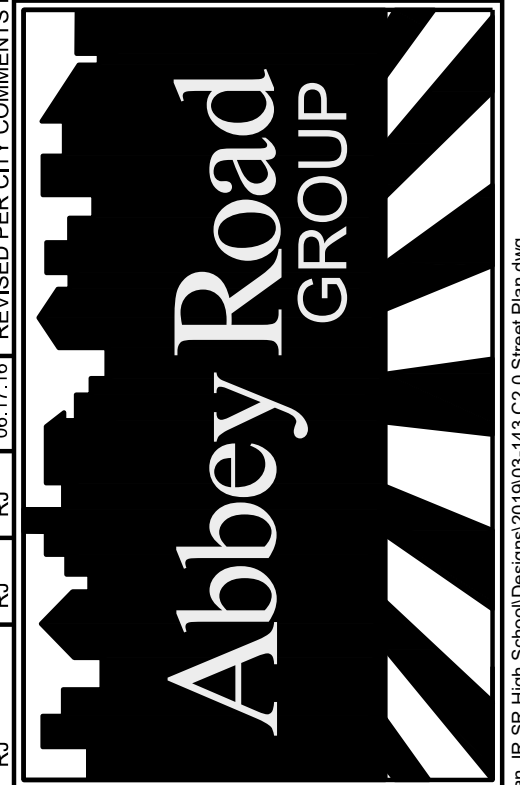
REVISIONS:	CHK:	APR:	DATE:	PER:
BY:				

TITLE:
**Cascade Christian
 MASTER SITE
 PLAN**
 Puyallup, WA

FOR:
Cascade Christian School
 Don Johnson
 815 21st St. SE
 Puyallup, WA 98372

Abbey Road Group
 Land Development
 Services Company, LLC
 923 SHAW ROAD, SUITE A
 PUYALLUP, WA 98372
 P.O. Box 1224, Puyallup, WA 98371
 (253) 435-3699, Fax (253) 446-3159

DESIGNED BY: GIL HULLSMANN
 DEVELOPMENT REVIEW: PRB
 APPROVED BY: GH
 DRAFTED BY: AEG
 DATE: 20 MAY 2020
 SHEET: C2.0



File: T:\PROJECTS\FILES\ACTIVE\03-143 Cascade Christian - 8th High School\Design\2019\03-143 C2.0 Street Plan.dwg
 Plotted By: Aryn Graham
 5/20/2020 10:41 AM