



Corner of 5th St SW & West Pioneer



Corner of West Meeker & 5th St SW



Corner of 4th St SW & West Meeker



Corner of West Pioneer & 4th St SW

# Bell Place Apartments

204 4th Street SW., PUYALLUP, WASHINGTON

10.3.2022

PERSPECTIVE

JMC

PR1.0

**R D + A**

ROSS DECKMAN & ASSOCIATES INC.

207 4th AVENUE SOUTHEAST,  
 PUYALLUP, WASHINGTON 98372  
 P. 253.840.9405  
 F. 253.840.9503





High Quality Materials	
W. Pioneer	71%
4th St SW	89%
W. Meeker	73%

**EAST ELEVATION - 4th Street SW**  
1/8" = 1'-0"



High Quality Materials	
W. Pioneer	71%
4th St SW	89%
W. Meeker	73%

Level	Top of Level (Elevation)
TOP OF ROOF	ROOF-L6: 409.83
	T.O.P.-L5: 408.83
	L5: 398.17
	T.O.P.-L4: 397.17
	L4: 388.25
	T.O.P.-L3: 387.25
	L3: 378.33
	T.O.P.-L2: 377.33
	L2: 366.67
	T.O.P.-L1: 365.67
	AVG. FINISH GRADE: 355

Vertical dimensions between levels:  
 L5 to L4: 8'-11"  
 L4 to L3: 8'-11"  
 L3 to L2: 8'-11"  
 L2 to L1: 10'-8"  
 L1 to Avg. Finish Grade: 11'-9"  
 Total height from Avg. Finish Grade to Top of Roof: 54'-10" (55'-0" total height including 50FT MAX ALLOWED + 5FT BONUS FOR GARAGE LEVEL)

**SOUTH ELEVATION - West Pioneer**  
1/8" = 1'-0"

# Bell Place Apartments

204 4th Street SW., PUYALLUP, WASHINGTON

10.3.2022

EXTERIOR ELEVATIONS South+East

JMC

PR1.1



**ROSS DECKMAN & ASSOCIATES INC.**

207 4th AVENUE SOUTHEAST,  
 PUYALLUP, WASHINGTON 98372  
 P. 253.840.9405  
 F. 253.840.9503





**WEST ELEVATION - Facing 5th St SW**  
1/8" = 1'-0"



**NORTH ELEVATION - West Meeker**  
1/8" = 1'-0"

High Quality Materials	
W. Pioneer	71%
4th St SW	89%
W. Meeker	73%

# Bell Place Apartments

204 4th Street SW., PUYALLUP, WASHINGTON

10.3.2022

EXTERIOR ELEVATIONS North+West

JMC

PR1.2

**R D + A**

**ROSS DECKMAN & ASSOCIATES INC.**

207 4th AVENUE SOUTHEAST,  
PUYALLUP, WASHINGTON 98372  
P. 253.840.9405  
F. 253.840.9503



WEST MEEKER

WEST PIONEER

5TH ST SW

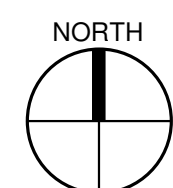
4TH ST SW

ADJACENT LOT



Building Plan - Level 1

3/32" = 1'-0"



# Bell Place Apartments

204 4th Street SW., PUYALLUP, WASHINGTON

10.3.2022

FLOOR PLAN-LEVEL 1

JMC

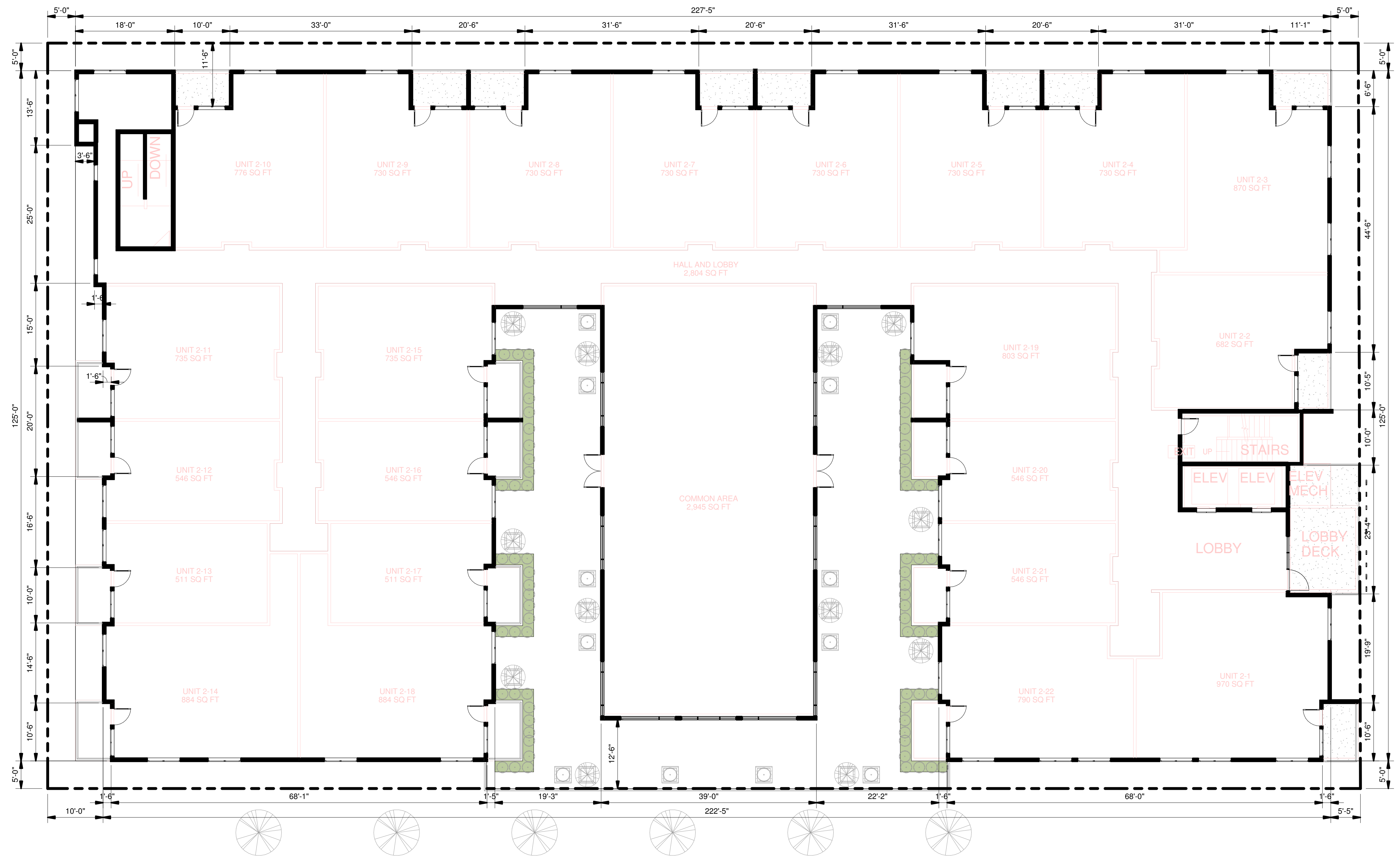
PR1.7

# R D + A

ROSS DECKMAN & ASSOCIATES INC.

207 4th AVENUE SOUTHEAST,  
 PUYALLUP, WASHINGTON 98372  
 P. 253.840.9405  
 F. 253.840.9503





**Building Plan - Level 2 / Courtyard**  
 3/32" = 1'-0"  
 NORTH

# Bell Place Apartments

204 4th Street SW., PUYALLUP, WASHINGTON

10.3.2022

FLOOR PLAN-LEVEL 2 / COURTYARD

JMC

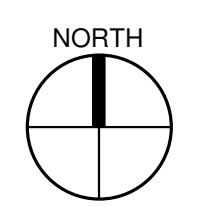
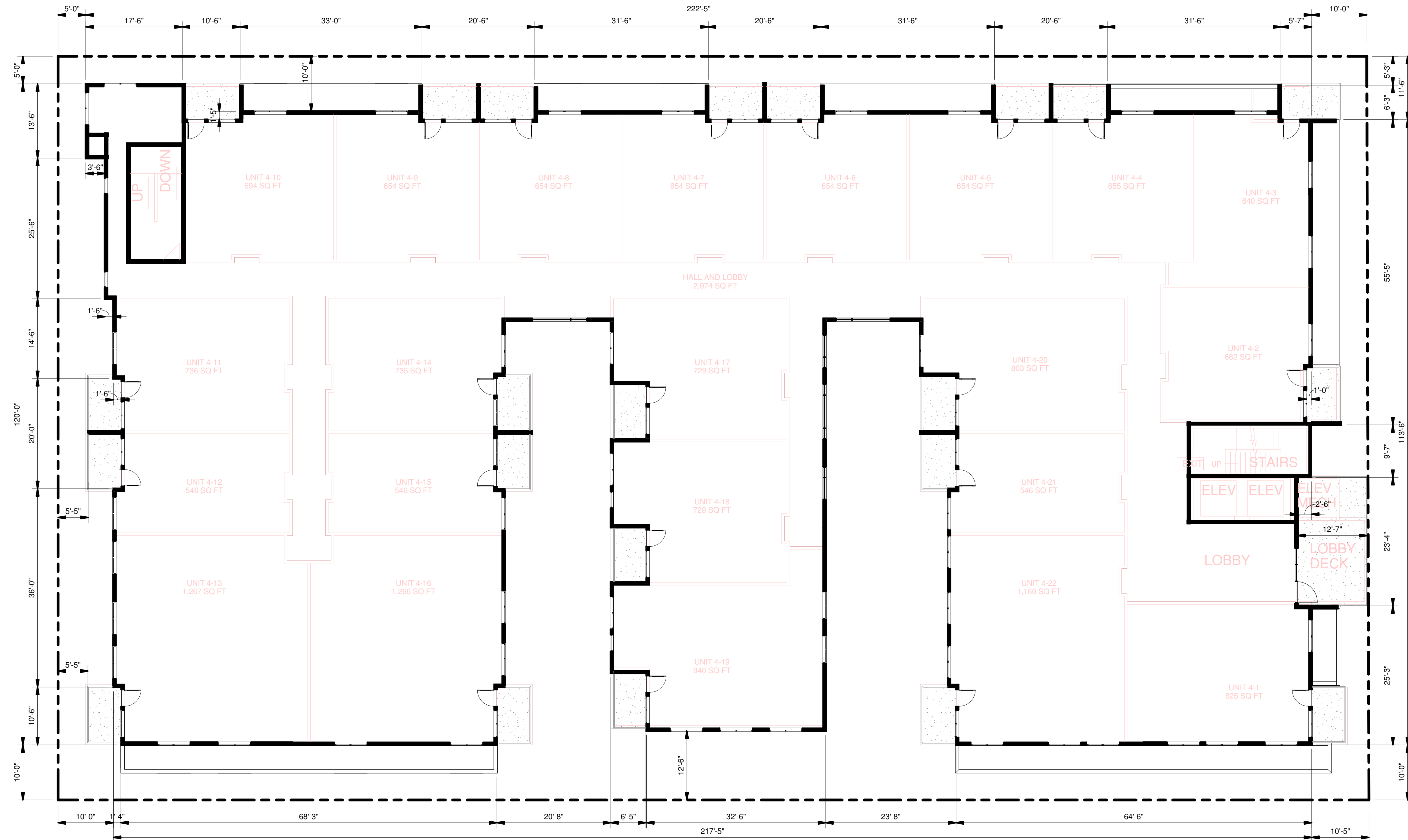
PR1.8



**ROSS DECKMAN & ASSOCIATES INC.**

207 4th AVENUE SOUTHEAST,  
 PUYALLUP, WASHINGTON 98372  
 P. 253.840.9405  
 F. 253.840.9503





# Bell Place Apartments

204 4th Street SW., PUYALLUP, WASHINGTON

10.3.2022

FLOOR PLAN-LEVEL 4-5

JMC

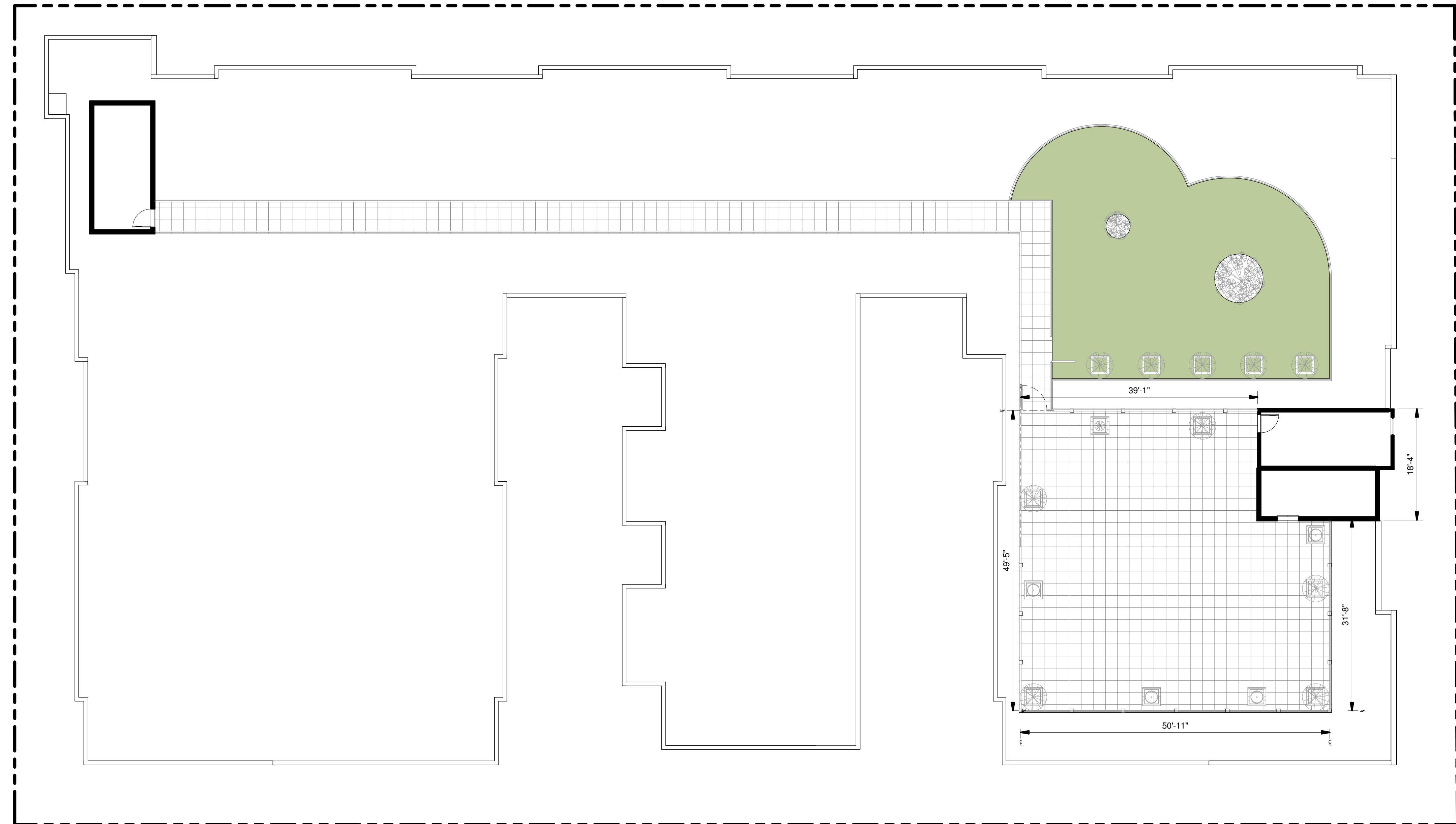
PR1.10

**R D + A**

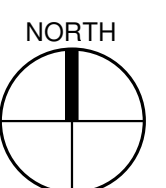
ROSS DECKMAN & ASSOCIATES INC.

207 4th AVENUE SOUTHEAST,  
 PUYALLUP, WASHINGTON 98372  
 P. 253.840.9405  
 F. 253.840.9503





**Building Plan - Level 6 / Roof Deck**  
 3/32" = 1'-0"



# Bell Place Apartments

204 4th Street SW., PUYALLUP, WASHINGTON

10.3.2022

FLOOR PLAN-LEVEL 6 / ROOF DECK

JMC

PR1.12

**R D + A**

ROSS DECKMAN & ASSOCIATES INC.

207 4th AVENUE SOUTHEAST,  
 PUYALLUP, WASHINGTON 98372  
 P. 253.840.9405  
 F. 253.840.9503



# MATERIALS LEGEND

	<b>S1</b> <b>MUTUAL MATERIALS</b> "COWINGTON" STANDARD BRICK COMMON BOND PATTERN		<b>S6</b> <b>JAMES HARDIE</b> "TIMBER BARK" LAP SIDING CEMENTITIOUS
	<b>S2</b> <b>LOCAL SUPPLIER</b> "NATURAL" POURED CONCRETE		
	<b>S3</b> <b>LOCAL SUPPLIER</b> "STAINED" CEDAR 6" EXPOSURE		
	<b>S4</b> <b>TAYLOR</b> PINE GREEN STANDING SEAM METAL SIDING 12" WIDE		
	<b>S5</b> <b>JAMES HARDIE</b> "ARTIC WHITE" SMOOTH LAP SIDING CEMENTITIOUS		
	<b>M1</b> <b>KAWNEER</b> "ANODIZED BLACK" TRIFAB 451UT ALUMINUM		<b>M9</b> <b>LOCAL SUPPLIER</b> "STAINED" TRELLIS ASSEMBLY WOOD
	<b>M2</b> <b>LOCAL SUPPLIER</b> "GREY" DOOR HALLOW METAL		<b>M10</b> <b>PELLA</b> "ANODIZED BLACK" DOOR INSULATED METAL
	<b>M3</b> <b>PELLA</b> "BLACK" WINDOW VINYL		<b>M11</b> <b>CYPRESS METALS</b> "ANODIZED DARK GREY" PARAPET CAP ALUMINUM
	<b>M4</b> <b>LOCAL SUPPLIER</b> "ANODIZED BLACK" OVERHEAD DOOR-OPEN GRATES METAL		
	<b>M5</b> <b>LOCAL SUPPLIER</b> "ANODIZED BLACK" AWNING METAL		
	<b>M6</b> <b>LOCAL SUPPLIER</b> "ANODIZED BLACK" RAILING HOLLOW METAL		
	<b>M7</b> <b>TAYLOR</b> "WHITE" TRIM FLASHING ALUMINUM		
	<b>M8</b> <b>CYPRESS METALS</b> "ANODIZED DARK GREY" PARAPET CAP ALUMINUM		



**Partial EAST ELEVATION - 4th Street SW**  
1/8" = 1'-0"

# Bell Place Apartments

204 4th Street SW., PUYALLUP, WASHINGTON

10.3.2022

FINISH MATERIALS

JMC

PR3



**ROSS DECKMAN & ASSOCIATES INC.**

207 4th AVENUE SOUTHEAST,  
PUYALLUP, WASHINGTON 98372  
P. 253.840.9405  
F. 253.840.9503