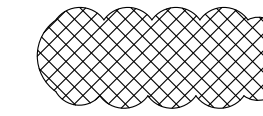
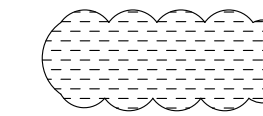
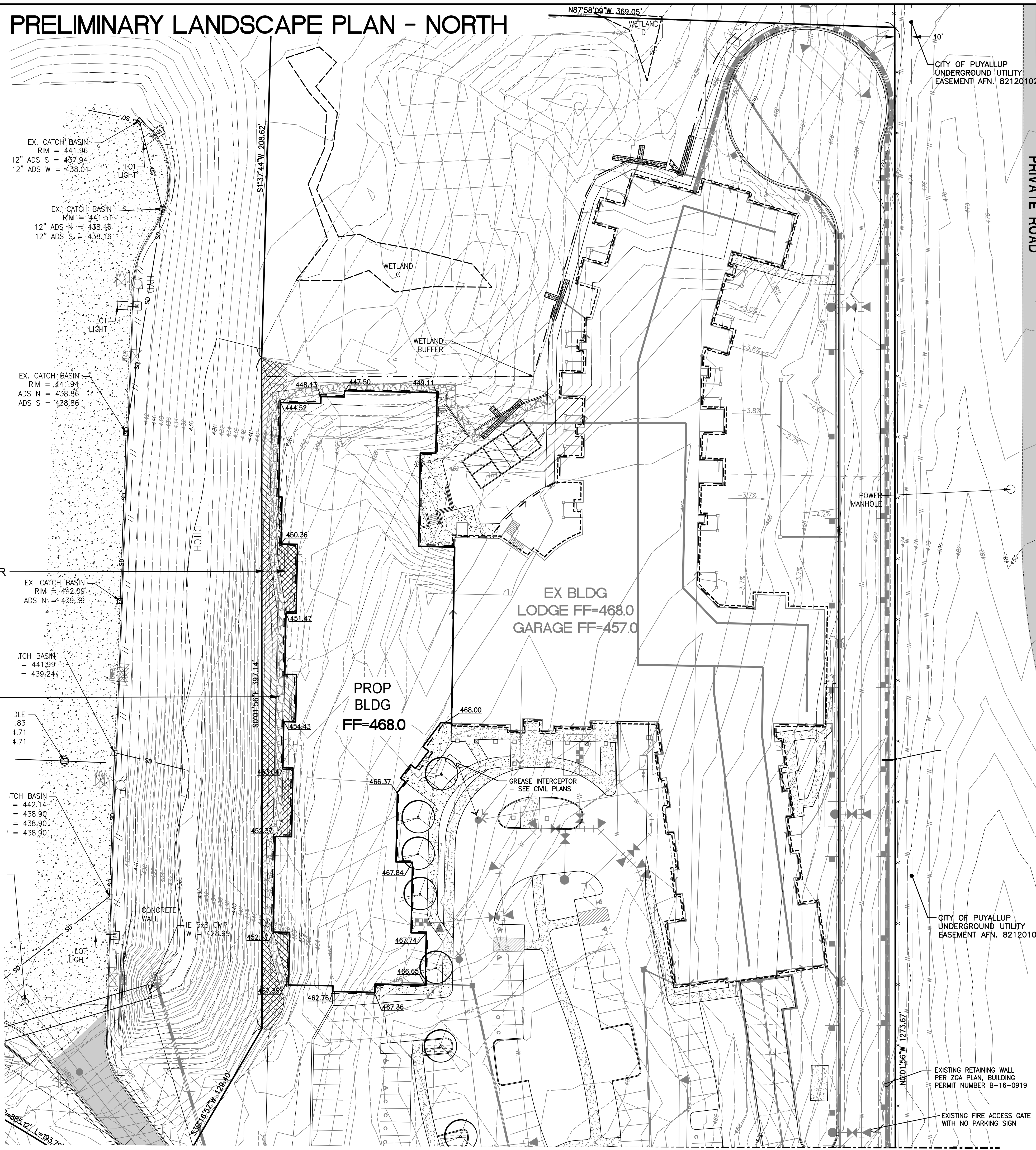


PRELIMINARY LANDSCAPE PLAN - NORTH

LEGEND

-  TYPE Ib LANDSCAPE BUFFER
(DIFFERING ZONING DESIGNATIONS ALONG INTERIOR PROPERTY LINES- RESIDENTIAL TO MEDICAL AND COMMERCIAL)
-  TYPE IV PARKING LOT LANDSCAPE
AREAS OVER 10,000 SQ FT SHALL HAVE 5% OF PAVED AREAS LANDSCAPED. AREAS TO RECEIVE IRRIGATION VIA PERMANENT IRRIGATION SYSTEM



APPROVED

BY _____ CITY OF PUYALLUP
ENGINEERING SERVICES

DATE _____

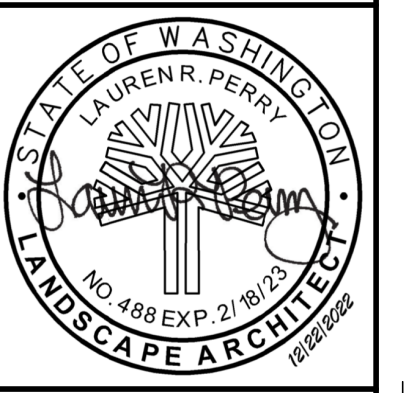
NOTE: THIS APPROVAL IS VOID AFTER 1 YEAR FROM APPROVAL DATE.
THE CITY WILL NOT BE RESPONSIBLE FOR ERRORS AND/OR OMISSIONS ON THESE PLANS.
FIELD CONDITIONS MAY DICTATE CHANGES TO THESE PLANS AS DETERMINED BY THE ENGINEERING SERVICES MANAGER.

No.	Date	By	Chd.	Appr.	Revision

For:
WESLEY HOMES
 815 SOUTH 216TH STREET
 DES MOINES, WA 98190
 (206) 870-1209

Title:
 PRELIMINARY LANDSCAPE PLAN - NORTH
 FOR
 WESLEY HOMES
 PUYALLUP, WA

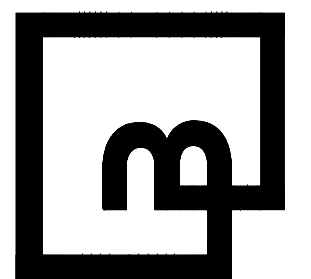
For:



Scale:
 Horizontal 1"=30'
 Vertical N/A

Designed: JV/LP
 Drawn: JV/LP
 Checked: JV/LP
 Approved: LRP
 Date: 12/22/22

Barghausen Consulting Engineers, Inc.
 18215 72nd Avenue South
 Kent, WA 98032
 425.251.6222 barghausen.com

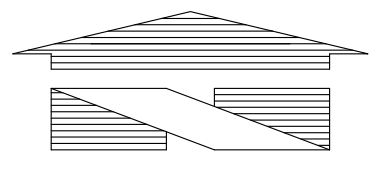


Job Number: 16718
 Sheet: L-1 of 2

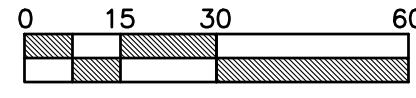
MATCH LINE SEE SHEET L-2

PRELIMINARY LANDSCAPE PLAN - SOUTH


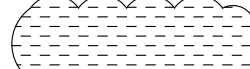
MATCH LINE SEE SHEET L-1

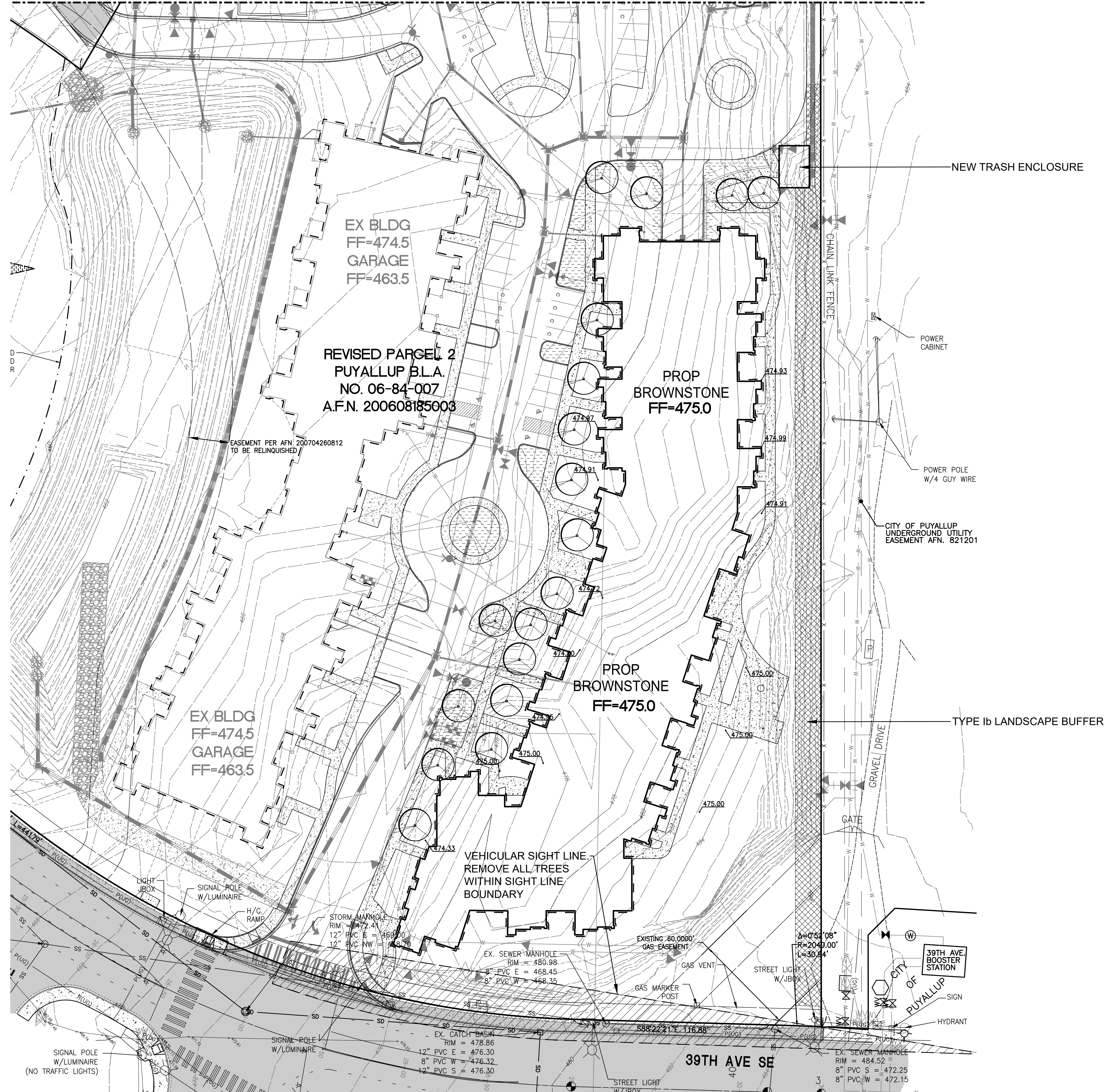


1"=30'



LEGEND

-  TYPE Ib LANDSCAPE BUFFER (DIFFERING ZONING DESIGNATIONS ALONG INTERIOR PROPERTY LINES- RESIDENTIAL TO MEDICAL AND COMMERCIAL)
-  TYPE IV PARKING LOT LANDSCAPE. AREAS OVER 10,000 SQ FT SHALL HAVE 5% OF PAVED AREAS LANDSCAPED. AREAS TO RECEIVE IRRIGATION VIA PERMANENT IRRIGATION SYSTEM



APPROVED

BY: CITY OF PUYALLUP
ENGINEERING SERVICES

DATE:

NOTE: THIS APPROVAL IS VOID AFTER 1 YEAR FROM APPROVAL DATE. THE CITY WILL NOT BE RESPONSIBLE FOR ERRORS AND/OR OMISSIONS ON THESE PLANS. FIELD CONDITIONS MAY DICTATE CHANGES TO THESE PLANS AS DETERMINED BY THE ENGINEERING SERVICES MANAGER.

No.	Date	By	Chd.	Appr.

Title: **PRELIMINARY LANDSCAPE PLAN - SOUTH**
FOR
WESLEY HOMES
PUYALLUP, WA

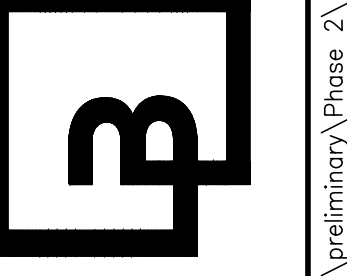
For: **WESLEY HOMES**
815 SOUTH 216TH STREET
DES MOINES, WA 98190
(206) 870-1209



Scale: Horizontal 1"=30' Vertical N/A

Designed: JV/LP
Drawn: JV/LP
Checked: JV/LP
Approved: LRP
Date: 12/22/22

Barghausen Consulting Engineers, Inc.
18215 72nd Avenue South
Kent, WA 98032
425.251.6222 barghausen.com



Job Number: **16718**
Sheet: **L-2 of 2**