



insite  
architects

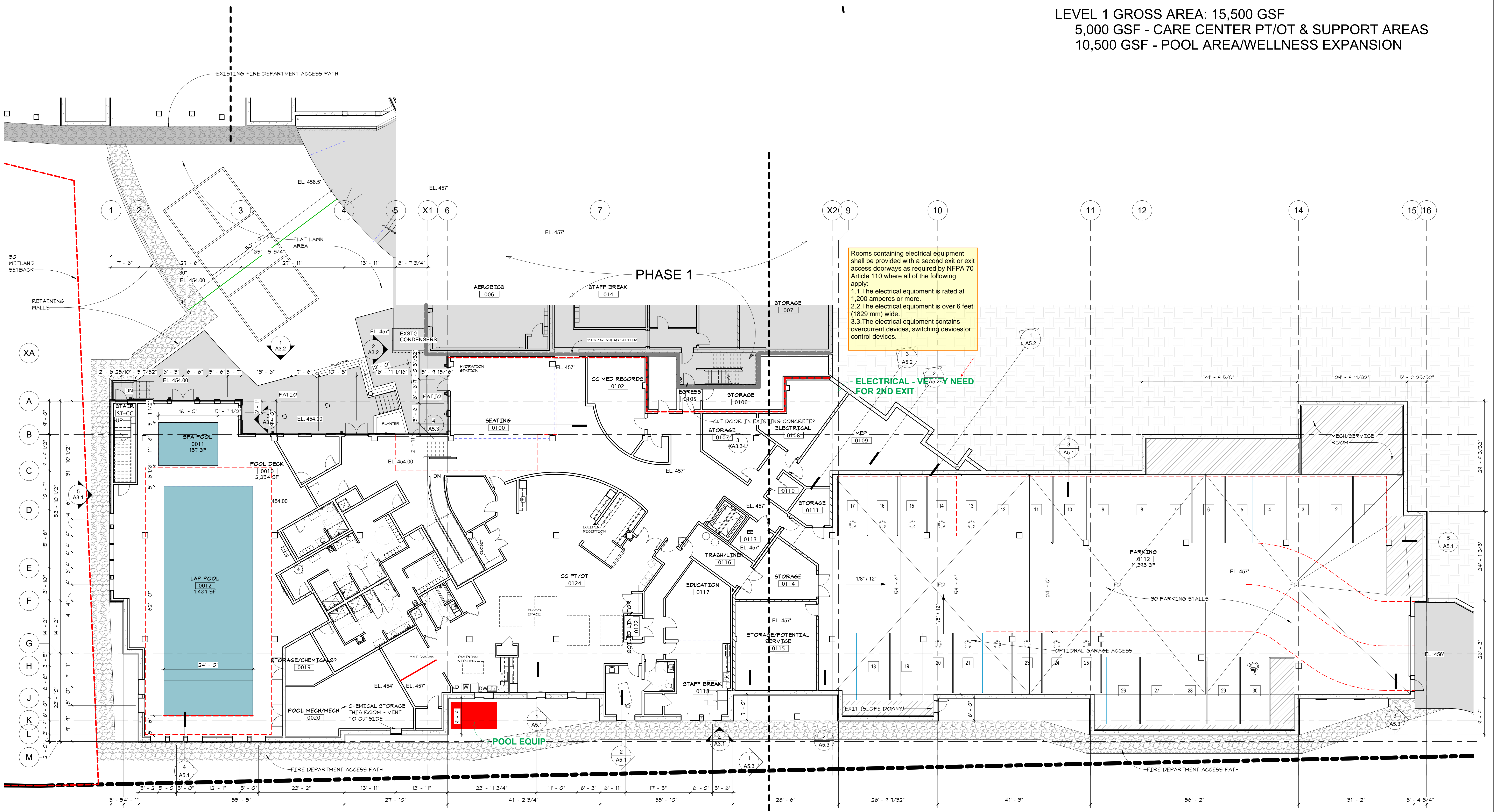
1000 university ave. w. # suite 130  
st. paul, minnesota 55104  
612-552-4820

I hereby certify that this document was prepared by me or under my direct supervision and that I am a duly licensed architect under the laws of the State of Washington

Dawn Wiczorek  
Typed or Printed Name

11192 X  
License # Date

LEVEL 1 GROSS AREA: 15,500 GSF  
5,000 GSF - CARE CENTER PT/OT & SUPPORT AREAS  
10,500 GSF - POOL AREA/WELLNESS EXPANSION



Rooms containing electrical equipment shall be provided with a second exit or exit access doorways as required by NFPA 70 Article 110 where all of the following apply:  
1.1. The electrical equipment is rated at 1,200 amperes or more.  
1.2. The electrical equipment is over 6 feet (1829 mm) wide.  
1.3. The electrical equipment contains overcurrent devices, switching devices or control devices.

ELECTRICAL - VEA5.2.1 NEED FOR 2ND EXIT

WESLEY BRADLEY PARK  
PHASE 2 - CARE CENTER  
707 39TH AVENUE SE  
PUYALLUP, WA 98374

LAND USE & MX-DRO REVIEW  
SUBMITTAL #2  
1/13/23

REVISIONS  
No. Description Date

2108  
PROJECT NUMBER  
Author \_\_\_\_\_ Checker \_\_\_\_\_  
DRAWN BY \_\_\_\_\_ CHECKED BY \_\_\_\_\_  
WESLEY BRADLEY PARK  
PHASE 2 - CARE CENTER

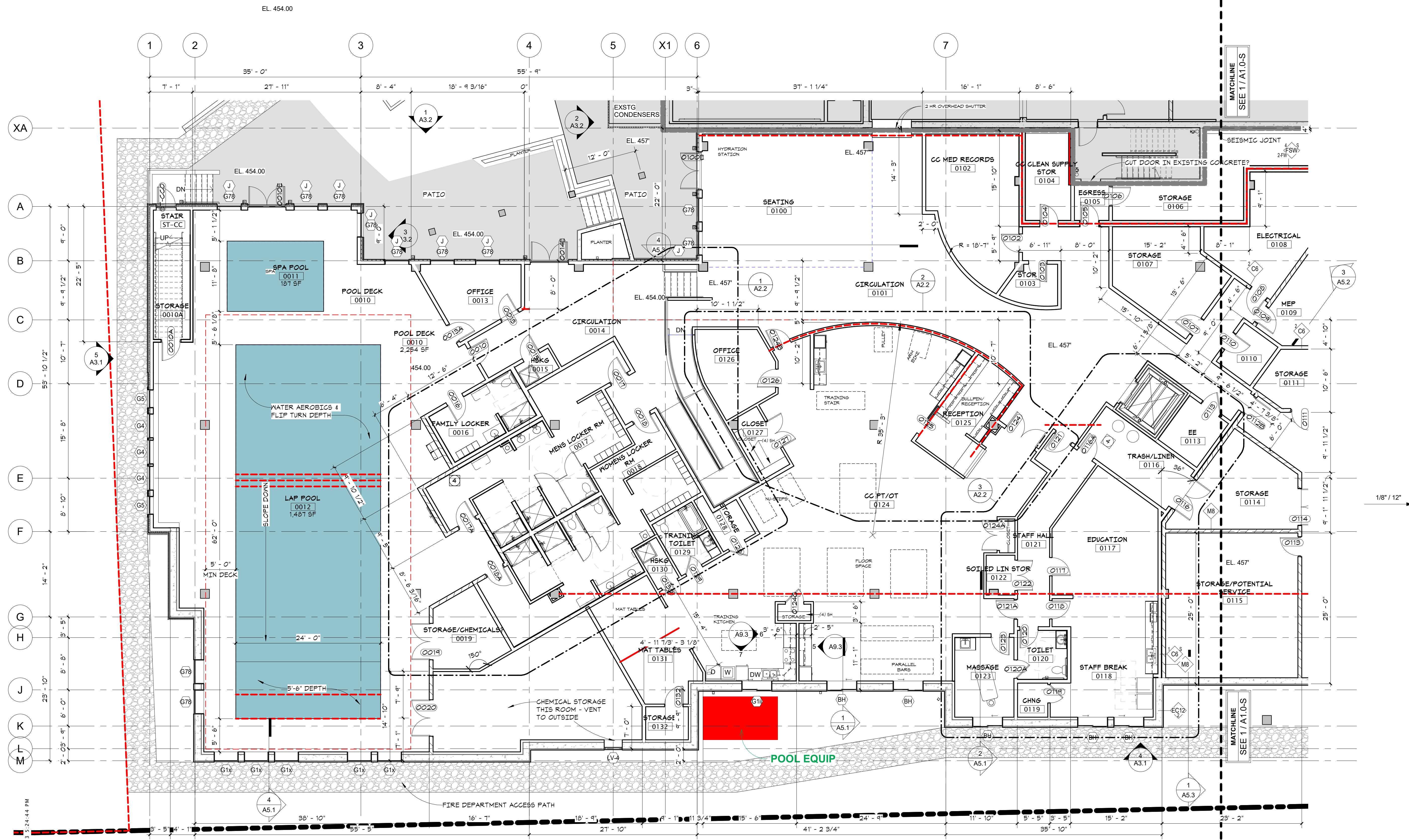
PHASE 2 LOWER LEVEL  
A1.0

1 PHASE 2 - LEVEL 0  
A1.0 3/32" = 1'-0"

1/13/2023 5:24:21 PM

LEVEL 00 - POOL LEVEL DOOR SCHEDULE															
REV	DR NO.	ROOM NAME	DOOR			FRAME			GLASS	HDWR	LABEL	Auto-Op	Mag Hold	COMMENTS	
			WIDT H	HT	THK	TYPE	MATL	FIN							TYPE
LEVEL 00															
	0010A	STORAGE	3'-0"	7'-0"	1 3/4"	FG	AL	AN	F1	AL	AN	IT		90	
	0010E	POOL DECK	6'-0"	7'-0"	1 3/4"	FG	AL	AN	F1	AL	AN	TG-3			
	0013	OFFICE	3'-0"	7'-0"	1 3/4"	FG	AL	AN	F1	AL	AN	IT			
	0013A	OFFICE	3'-0"	7'-0"	1 3/4"	FG	AL	AN	F1	AL	AN	IT			
	0014E	CIRCULATION	6'-0"	7'-0"	1 3/4"	FG	AL	AN	F1	AL	AN	TG-3			
	0015	HSKG	3'-0"	6'-8"	1 3/4"	AP	WD	ST	F1	DW	PREFIN				
	0016	FAMILY LOCKER	3'-0"	6'-8"	1 3/4"	AP	WD	ST	F1	DW	PREFIN				
	0017	MENS LOCKER RM	3'-0"	7'-0"	1 3/4"	FG	AL	AN	F1	AL	AN	IT	234E01	Yes	PROXIMITY READER
	0017A	MENS LOCKER RM	3'-0"	7'-0"	1 3/4"	FG	AL	AN	F1	AL	AN	IT	181.1		SANDBLASTED GLASS
	0018	WOMENS LOCKER RM	3'-0"	7'-0"	1 3/4"	FG	AL	AN	F1	AL	AN	IT	234E01	Yes	PROXIMITY READER
	0018A	WOMENS LOCKER RM	3'-0"	7'-0"	1 3/4"	FG	AL	AN	F1	AL	AN	IT	181.1		SANDBLASTED GLASS
	0019	STORAGE/CHEMICALS?	6'-0"	6'-8"	1 3/4"	FG	WD	PT	F1	DW	PREFIN				
	0020	POOL MECHMECH	6'-0"	6'-8"	1 3/4"	FG	WD	PT	F1	DW	PREFIN				

LEVEL 0 - DOOR SCHEDULE															
REV	DR NO.	ROOM NAME	DOOR			FRAME			GLASS	HDWR	LABEL	Auto-Op	Mag Hold	COMMENTS	
			WIDT H	HT	THK	TYPE	MATL	FIN							TYPE
	0100E	SEATING	6'-0"	7'-0"	1 3/4"	FG	AL	AN	F1	AL	AN	IT			
	0102	CC MED RECORDS	3'-0"	6'-8"	1 3/4"	AP	WD	ST	F1	DW	PREFIN				
	0103	STOR	3'-0"	6'-8"	1 3/4"	AP	WD	ST	F1	DW	PREFIN				
	0104	CC CLEAN SUPPLY STOR	3'-0"	6'-8"	1 3/4"	AP	WD	ST	F1	DW	PREFIN				
	0105	EGRESS	3'-0"	6'-8"	1 3/4"	AP	WD	ST	F1	DW	PREFIN				
	0106	STORAGE	3'-0"	6'-8"	1 3/4"	F	HM	PT	F1	HM	PT				
	0107	STORAGE	3'-0"	6'-8"	1 3/4"	F	HM	PT	F1	HM	PT				
	0108	ELECTRICAL	3'-0"	6'-8"	1 3/4"	F	HM	PT	F1	HM	PT				
	0109	MEP	3'-0"	6'-8"	1 3/4"	F	HM	PT	F1	HM	PT				
	0110	CIRCULATION	3'-0"	6'-8"	1 3/4"	F	HM	PT	F1	HM	PT				
	0111	STORAGE	3'-0"	6'-8"	1 3/4"	F	HM	PT	F1	HM	PT				
	0112	PARKING	16'-5"	0"	0"										
	0112A	PARKING	3'-0"	6'-8"	1 3/4"	F	HM	PT	F1	HM	PT				
	0112B	CIRCULATION	3'-0"	6'-8"	1 3/4"	F	HM	PT	F1	HM	PT				
	0113	EE	3'-6"	7'-0"	1 3/4"	F	HM	PT	F1	HM	PT				
	0113	STORAGE/POTENTIAL SERVICE	3'-0"	6'-8"	1 3/4"	F	HM	PT	F1	HM	PT				
	0114	STORAGE	6'-0"	7'-0"	1 3/4"	FG	HM	PT	F1A	HM	PREFIN	TG-3			
	0116	TRASH/LINEN	6'-0"	7'-0"	1 3/4"	FG	HM	PT	F1A	HM	PREFIN	TG-3			
	0116A	TRASH/LINEN	3'-0"	6'-8"	1 3/4"	AP	WD	ST	F1	DW	PREFIN				
	0117	EDUCATION	3'-0"	6'-8"	1 3/4"	NL	WD	ST	F1	DW	PREFIN				
	0118	STAFF BREAK	3'-0"	6'-8"	1 3/4"	NL	WD	ST	F1	DW	PREFIN				
	0119	CHNG	3'-0"	6'-8"	1 3/4"	AP	WD	ST	F1	DW	PREFIN				
	0120	TOILET	3'-0"	6'-8"	1 3/4"	AP	WD	ST	F1	DW	PREFIN				
	0120A	MASSAGE	3'-0"	6'-8"	1 3/4"	AP	WD	ST	F1	DW	PREFIN				
	0121	STAFF HALL	3'-0"	6'-8"	1 3/4"	F	HM	PT	F1	HM	PT				
	0121A	STAFF HALL	3'-0"	6'-8"	1 3/4"	F	HM	PT	F1	HM	PT				
	0122	SOILED LIN STOR	5'-0"	6'-8"	1 3/4"	AP	WD	ST	F1	DW	PREFIN				
	0123	MASSAGE	3'-0"	6'-8"	1 3/4"	AP	WD	ST	F1	DW	PREFIN				
	0123C	PARKING	3'-0"	6'-8"	1 3/4"	F	HM	PT	F1	HM	PT				
	0124	CC PT/OT	6'-0"	6'-8"	1 3/4"	FG	WD	ST	F1	DW	PREFIN	T			
	0124A	CC PT/OT	5'-0"	6'-8"	1 3/4"	AP	WD	ST	F1	DW	PREFIN				010
	0124B	CC PT/OT	3'-0"	6'-8"	1 3/4"	AP	WD	ST	F1	DW	PREFIN				
	0124C	CC PT/OT	3'-0"	6'-8"	1 3/4"	AP	WD	ST	F1	DW	PREFIN				014
	0126	OFFICE	3'-0"	6'-8"	1 3/4"	NL	WD	ST	F1	DW	PREFIN				
	0127	CLOSET	5'-0"	6'-8"	1 3/4"	AP	WD	ST	F1	DW	PREFIN				
	0128	STORAGE	3'-0"	6'-8"	1 3/4"	AP	WD	ST	F1	DW	PREFIN				012HK
	0129	TRAINING TOILET	3'-0"	6'-8"	1 3/4"	AP	WD	ST	F1	DW	PREFIN				012HK
	0130	HSKG	3'-0"	6'-8"	1 3/4"	AP	WD	ST	F1	DW	PREFIN				014
	0132	STORAGE	3'-0"	6'-8"	1 3/4"	AP	WD	ST	F1	DW	PREFIN				



- GENERAL PLAN NOTES**
1. TYPICAL INTERIOR DIMENSIONS FOR SINGLE STUD WALLS ARE TO CENTER OF STUD. FOR MULTIPLE STUD WALLS DIMENSIONS ARE TO CENTER OF WALL ASSEMBLY. FINISH DIMENSIONS ARE TO FINISH, AND MASONRY DIMENSIONS ARE TO FACE OF WALL.
  2. EXTERIOR DIMENSIONS ARE TO OUTSIDE FACE OF FOUNDATION & SHEATHING AND TO CENTERLINE OF WINDOWS.
  3. PROVIDE ACCESS PANELS WHEREVER REQUIRED FOR ACCESS TO MECHANICAL AND/OR ELECTRICAL ITEMS. VERIFY WITH MECHANICAL AND ELECTRICAL AND COORDINATE EXACT LOCATION WITH ARCHITECT IF LOCATED IN FINISHED SPACES.
  4. PRIME AND PAINT ALL EXPOSED EXTERIOR METALS, ETC. WHICH ARE NOT PREFINISHED, SUCH AS, BUT NOT LIMITED TO: STEEL LINTELS, BOLLARDS, ETC.
  5. ALL STRUCTURAL STEEL TO BE (1) HOUR FIRE RATED. SEE STRUCTURAL PLANS FOR LOCATIONS AND QUANTITY OF STEEL BEAMS AND COLUMNS.
  6. SEE SHEET A10.1 FOR WALL TYPES.
  7. SEE A10 SERIES SHEETS TYPICAL INTERIOR DETAILS.
  8. PAINT ALL ITEMS PENETRATING THE SLOPED ROOF TO MATCH ROOFING SUCH AS BUT NOT LIMITED TO VENT PIPES, FAN COVERS, ETC.
  9. PROVIDE AN AUTOMATIC DRY SPRINKLER SYSTEM IN THE SLOPED AND FLAT ROOF ATTIC INSTEAD OF DRAFTSTOPPING.
  10. SEE SHEETS A2 SERIES SHEETS FOR ENLARGED UNIT PLANS AND FLOOR PLANS.
  11. AT RESIDENTIAL FLOORS, PROVIDE HANDRAIL ON ONE SIDE OF CORRIDOR. PROVIDE BLOCKING FOR FUTURE RAILING AT OPPOSITE SIDE.
  12. SEE INTERIOR DESIGNER'S FINISH SCHEDULE FOR LECT 10 F CHAIR & PICTURE RAILS.
  13. FOR TYPICAL EXTERIOR AIR BARRIER INSTALLATION -

**in site architects**  
 1000 university ave. w. suite 130  
 st. paul, minnesota 55104  
 612-252-4820

I hereby certify that this document was prepared by me or under my direct supervision and that I am a duly licensed architect under the laws of the State of Washington.

Dawn Wiecezorek  
 Typed or Printed Name  
 11192 X  
 License # Date

**WESLEY BRADLEY PARK  
 PHASE 2 - CARE CENTER**  
 707 39TH AVENUE SE  
 PUYALLUP, WA 98374

**LAND USE & MX-DRO REVIEW  
 SUBMITTAL #2**  
 1/13/23

**REVISIONS**

No.	Description	Date

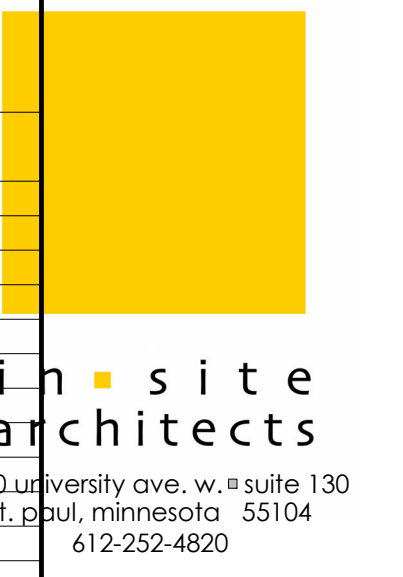
2108  
 PROJECT NUMBER

Author: \_\_\_\_\_ Checker: \_\_\_\_\_  
 DRAWN BY: \_\_\_\_\_ CHECKED BY: \_\_\_\_\_

WESLEY BRADLEY PARK  
 PHASE 2 - CARE CENTER

LEVEL 0 - NORTH  
**A1.0-N**

REV	DR NO.	ROOM NAME	DOOR						FRAME				GLASS	HDWR	LABEL	Auto-Op	FOB	Mag Hold	COMMENTS
			WIDT	HT	THK	TYPE	MATL	FIN	TYPE	MATL	FIN								
LEVEL 0																			
0100E		SEATING	6'-0"	7'-0"	1 3/4"	FG	AL	AN	F1	AL	AN	IT							
0102		CC MED RECORDS	3'-0"	6'-8"	1 3/4"	AP	WD	ST	F1	DW	PREFIN								
0103		STOR	3'-0"	6'-8"	1 3/4"	AP	WD	ST	F1	DW	PREFIN								
0104		CC CLEAN SUPPLY STOR	3'-0"	6'-8"	1 3/4"	AP	WD	ST	F1	DW	PREFIN								
0105		EGRESS	3'-0"	6'-8"	1 3/4"	AP	WD	ST	F1	DW	PREFIN								
0106		STORAGE	3'-0"	6'-8"	1 3/4"	F	HM	PT	F1	HM	PT								
0107		STORAGE	3'-0"	6'-8"	1 3/4"	F	WD	ST	F1	HM	PREFIN								
0108		ELECTRICAL	3'-0"	6'-8"	1 3/4"	F	WD	ST	F1	HM	PREFIN								
0109		MEP	3'-0"	6'-8"	1 3/4"	F	WD	ST	F1	HM	PREFIN								
0110		CIRCULATION	3'-0"	6'-8"	1 3/4"	F	WD	ST	F1	HM	PREFIN								
0111		STORAGE	3'-0"	6'-8"	1 3/4"	F	HM	PT	F1	HM	PT								
0112		PARKING	16'-5"	0"	0"														
0112A		PARKING	3'-0"	6'-8"	1 3/4"	F	HM	PT	F1	HM	PT								
0112B		CIRCULATION	3'-0"	6'-8"	1 3/4"	F	HM	PT	F1	HM	PT								
0113		EE	3'-6"	7'-0"	1 3/4"	F	HM	PT	F1	HM	PT								
0113		STORAGE/POTENTIAL SERVICE	3'-0"	6'-8"	1 3/4"	F	HM	PT	F1	HM	PT								
0114		STORAGE	6'-0"	7'-0"	1 3/4"	FG	HM	PT	F1A	HM	PREFIN	TG-3							
0116		TRASHLINEN	6'-0"	7'-0"	1 3/4"	FG	HM	PT	F1A	HM	PREFIN	TG-3							
0116A		TRASHLINEN	3'-0"	6'-8"	1 3/4"	AP	WD	ST	F1	DW	PREFIN								
0117		EDUCATION	3'-0"	6'-8"	1 3/4"	NL	WD	ST	F1	DW	PREFIN								
0118		STAFF BREAK	3'-0"	6'-8"	1 3/4"	NL	WD	ST	F1	DW	PREFIN								
0119		CHNG	3'-0"	6'-8"	1 3/4"	AP	WD	ST	F1	DW	PREFIN								
0120		TOILET	3'-0"	6'-8"	1 3/4"	AP	WD	ST	F1	DW	PREFIN								
0120A		MASSAGE	3'-0"	6'-8"	1 3/4"	AP	WD	ST	F1	DW	PREFIN		031110						
0121		STAFF HALL	3'-0"	6'-8"	1 3/4"	F	HM	PT	F1	HM	PT								
0121A		STAFF HALL	3'-0"	6'-8"	1 3/4"	F	HM	PT	F1	HM	PT								
0122		SOILED LIN STOR	5'-0"	6'-8"	1 3/4"	AP	WD	ST	F1	DW	PREFIN								
0123		MASSAGE	3'-0"	6'-8"	1 3/4"	AP	WD	ST	F1	DW	PREFIN								
0123C		PARKING	3'-0"	6'-8"	1 3/4"	F	HM	PT	F1	HM	PT								
0124		CC PT/OT	6'-0"	6'-8"	1 3/4"	FG	WD	ST	F1	DW	PREFIN	T							
0124A		CC PT/OT	5'-0"	6'-8"	1 3/4"	AP	WD	ST	F1	DW	PREFIN		010						
0124B		CC PT/OT	3'-0"	6'-8"	1 3/4"	AP	WD	ST	F1	DW	PREFIN								
0124C		CC PT/OT	3'-0"	6'-8"	1 3/4"	AP	WD	ST	F1	DW	PREFIN		014						
0126		OFFICE	3'-0"	6'-8"	1 3/4"	NL	WD	ST	F1	DW	PREFIN								
0127		CLOSET	5'-0"	6'-8"	1 3/4"	AP	WD	ST	F1	DW	PREFIN								
0128		STORAGE	3'-0"	6'-8"	1 3/4"	AP	WD	ST	F1	DW	PREFIN		012HK						
0129		TRAINING TOILET	3'-0"	6'-8"	1 3/4"	AP	WD	ST	F1	DW	PREFIN		012HK						
0130		HSKG	3'-0"	6'-8"	1 3/4"	AP	WD	ST	F1	DW	PREFIN		014						
0132		STORAGE	3'-0"	6'-8"	1 3/4"	AP	WD	ST	F1	DW	PREFIN								



I hereby certify that this document was prepared by me or under my direct supervision and that I am a duly licensed architect under the laws of the State of Washington.

Dawn Wiczorek  
 11192  
 License # X  
 Date

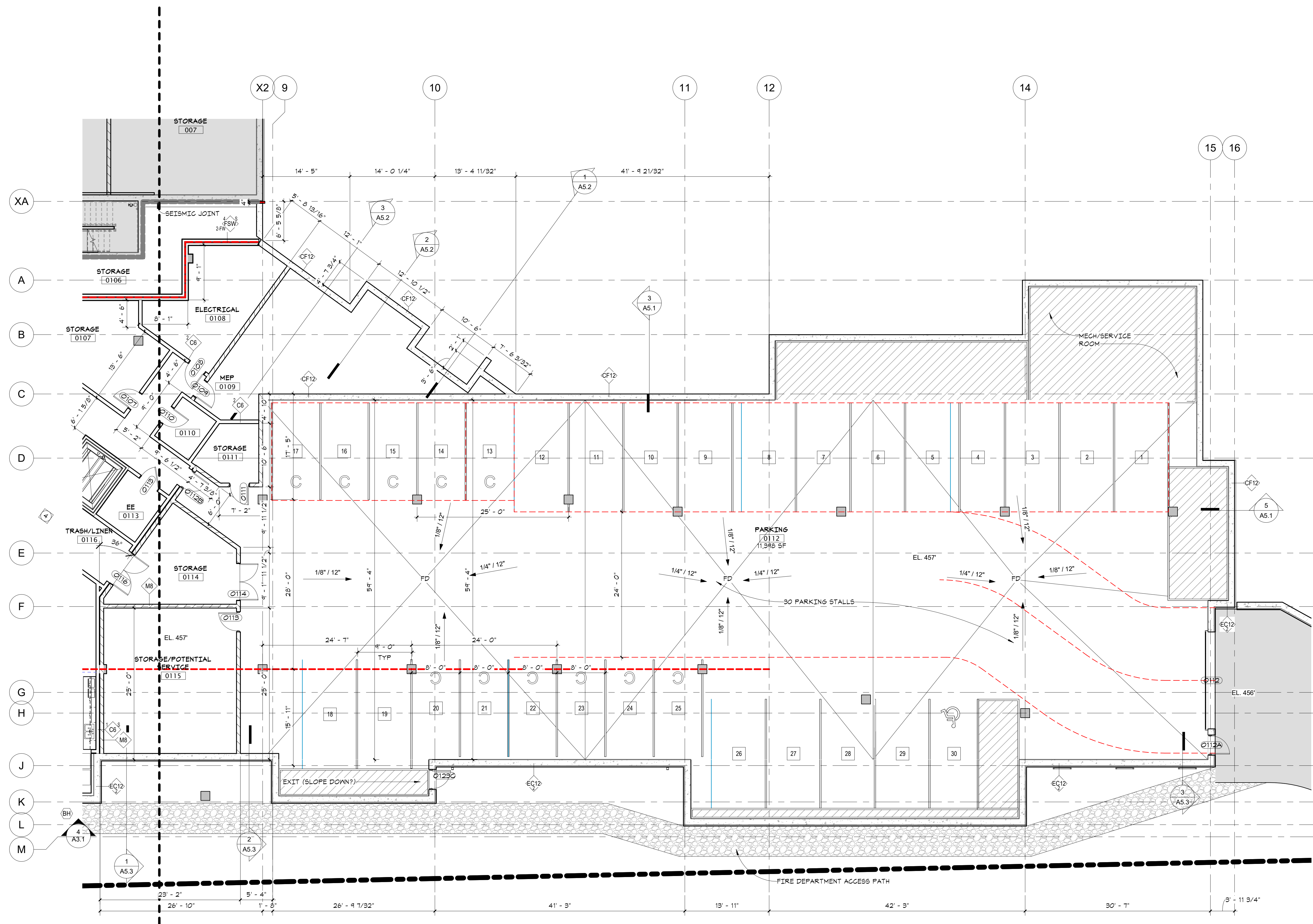
WESLEY BRADLEY PARK  
 PHASE 2 - CARE CENTER  
 707 39TH AVENUE SE  
 PUYALLUP, WA 98374

LAND USE & MX-DRO REVIEW  
 SUBMITTAL #2  
 1/13/23

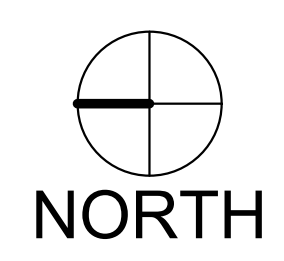
REVISIONS  
 No. Description Date

2108  
 PROJECT NUMBER  
 Author Checked by  
 DRAWN BY CHECKED BY  
 WESLEY BRADLEY PARK  
 PHASE 2 - CARE CENTER

LEVEL 0 - SOUTH  
 A1.0-S



- GENERAL PLAN NOTES**
- TYPICAL INTERIOR DIMENSIONS FOR SINGLE STUD WALLS ARE TO CENTER OF STUD. FOR MULTIPLE STUD WALLS DIMENSIONS ARE TO CENTER OF WALL ASSEMBLY. FINISH DIMENSIONS ARE TO FINISH, AND MASONRY DIMENSIONS ARE TO FACE OF WALL.
  - EXTERIOR DIMENSIONS ARE TO OUTSIDE FACE OF FOUNDATION & SHEATHING TO CENTERLINE OF WINDOWS.
  - PROVIDE ACCESS PANELS WHEREVER REQUIRED FOR ACCESS TO MECHANICAL AND/OR ELECTRICAL ITEMS. VERIFY WITH MECHANICAL AND ELECTRICAL AND COORDINATE EXACT LOCATION WITH ARCHITECT IF LOCATED IN FINISHED SPACES.
  - PRIME AND PAINT ALL EXPOSED EXTERIOR METALS, ETC. WHICH ARE NOT PREFINISHED, SUCH AS, BUT NOT LIMITED TO: STEEL LINTELS, BOLLARDS, ETC.
  - ALL STRUCTURAL STEEL TO BE (1) HOUR FIRE RATED. SEE STRUCTURAL PLANS FOR LOCATIONS AND QUANTITY OF STEEL BEAMS AND COLUMNS.
  - SEE SHEET A10.1 FOR WALL TYPES.
  - SEE A10 SERIES SHEETS TYPICAL INTERIOR DETAILS.
  - PAINT ALL ITEMS PENETRATING THE SLOPED ROOF TO MATCH ROOFING SUCH AS BUT NOT LIMITED TO VENT PIPES, FAN COVERS, ETC.
  - PROVIDE AN AUTOMATIC DRY SPRINKLER SYSTEM IN THE SLOPED AND FLAT ROOF ATTIC INSTEAD OF DRAFTSTOPPING.
  - SEE SHEETS A2 SERIES SHEETS FOR ENLARGED UNIT PLANS AND FLOOR PLANS.
  - AT RESIDENTIAL FLOORS, PROVIDE HANDRAIL ON ONE SIDE OF CORRIDOR. PROVIDE BLOCKING FOR FUTURE RAILING AT OPPOSITE SIDE.
  - SEE INTERIOR DESIGNER'S FINISH SCHEDULE FOR LIGHT FIXTURES, CHAIR & PICTURE RAILS.
  - FOR TYPICAL EXTERIOR AIR BARRIER INSTALLATION -



1/13/2023 3:24:55 PM

1 PHASE 2 - LEVEL 0 - SOUTH  
 A1.0-S 1/8" = 1'-0"



in site architects

1000 university ave. w. suite 130  
st. paul, minnesota 55104  
612-252-4820

I hereby certify that this document was prepared by me or under my direct supervision and that I am a duly licensed architect under the laws of the State of Washington

Dawn Wiczorek  
Typed or Printed Name

11192 X  
License # Date

# WESLEY BRADLEY PARK PHASE 2 - CARE CENTER 707 39TH AVENUE SE PUYALLUP, WA 98374

LAND USE & MX-DRO REVIEW  
SUBMITAL #2  
1/13/23

No.	Description	Date
3	REVISIONS	

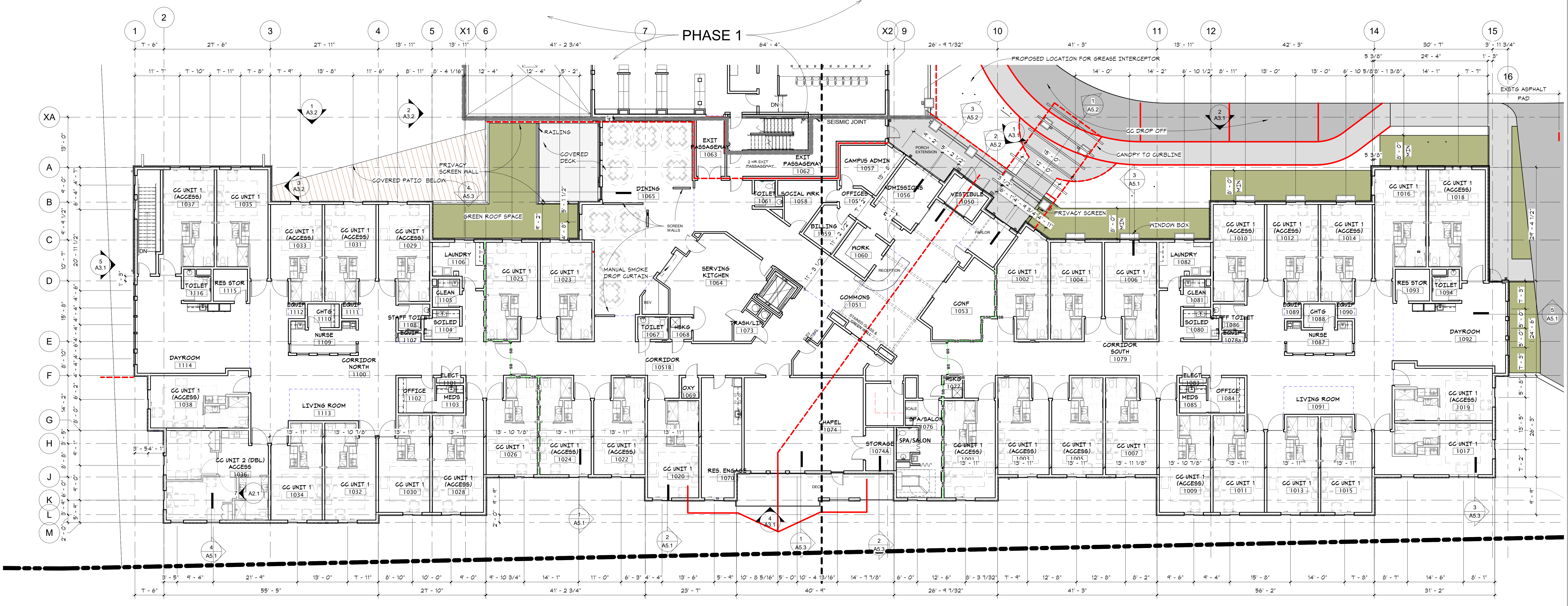
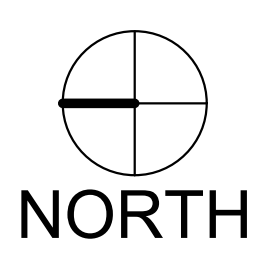
2108  
PROJECT NUMBER

Author \_\_\_\_\_ Checker \_\_\_\_\_  
DRAWN BY \_\_\_\_\_ CHECKED BY \_\_\_\_\_

WESLEY BRADLEY PARK  
PHASE 2 - CARE CENTER

PHASE 2 LEVEL 1

# A1.1



### PHASE 1

1 PHASE 2 - LEVEL 1  
A1.1 3/32" = 1'-0"

1/13/2023 5:25:24 PM

LEVEL 1 - DOOR SCHEDULE																		LEVEL 1 - DOOR SCHEDULE																						
REV	DOOR NO.	ROOM NAME	WIDTH	HT	THK	TYPE	MATL	FIN	TYPE	MATL	FIN	GLAS S	HDWR	LABEL	Auto-Op	FOB	Mag Hold	COMMENTS	DOOR NO.	ROOM NAME	WIDTH	HT	THK	TYPE	MATL	FIN	TYPE	MATL	FIN	GLAS S	HDWR	LABEL	Auto-Op	FOB	Mag Hold	COMMENTS				
	1050	COMMONS	6'-0"	7'-0"	1 3/4"	FG	AL	AN	F1	AL	AN	TG-3				Yes				1082	LAUNDRY	3'-0"	6'-8"	1 3/4"	EMB-2	SCHB	PT	F1	DW	PREFIN		034	60							
	1050E	VESTIBULE	6'-0"	7'-0"	1 3/4"	FG	AL	AN	F1	AL	AN	TG-3				Yes			1083	ELECT	5'-0"	6'-8"	1 3/4"	EMB-2	WD	ST	F1	DW	PREFIN		024F									
	1051A	CL	3'-0"	6'-8"	1 3/4"	F	WD	PT	F1	DW	PREFIN								1084	OFFICE	3'-0"	6'-8"	1 3/4"	NL	WD	ST	F1	DW	PREFIN		012HK									
	1053	COMMONS	5'-4"	6'-10"	1 1/2"	NL	WD	ST	F1	DW	PREFIN								1085	MEDS	3'-0"	6'-8"	1 3/4"	EMB-2	SCHB	PT	F1	DW	PREFIN		034E03									
	1055	COMMONS	3'-0"	6'-8"	1 3/4"	NL	WD	ST	F1	DW	PREFIN								1086	STAFF TOILET	3'-0"	6'-8"	1 3/4"	EMB-2	SCHB	PT	F1	DW	PREFIN		03101									
	1056	OFFICES	3'-0"	6'-8"	1 3/4"	NL	WD	ST	F1	DW	PREFIN								1088	CHTS	3'-0"	6'-8"	1 3/4"	EMB-2	SCHB	PT	F1	DW	PREFIN		012HK									
	1056A	ADMISSIONS	5'-4"	6'-10"	1 1/2"	NL	WD	ST	F1	DW	PREFIN								1089	CORRIDOR	3'-0"	6'-8"	1 3/4"	AP	WD	ST	F1	DW	PREFIN		T									
	1057	OFFICES	3'-0"	6'-8"	1 3/4"	NL	WD	ST	F1	DW	PREFIN								1093	RES STOR	3'-0"	6'-8"	1 3/4"	AP	WD	ST	F1	DW	PREFIN											
	1058	SOCIAL WRK	3'-0"	6'-8"	1 3/4"	NL	WD	ST	F1	DW	PREFIN								1094	DAYROOM	3'-0"	6'-8"	1 3/4"	EMB-2	SCHB	PT	F1	DW	PREFIN		03101									
	1058A	OFFICES	3'-0"	6'-8"	1 3/4"	NL	WD	ST	F1	DW	PREFIN								1100	CORRIDOR NORTH	8'-0"	7'-0"	1 3/4"	NL	HM	PT	F1	HM	PT		T									
	1059	OFFICES	3'-0"	6'-8"	1 3/4"	NL	WD	ST	F1	DW	PREFIN								1101	CORRIDOR NORTH	8'-0"	6'-8"	1 3/4"	EMB-2	WD	PT	F1	DW	PREFIN		024F									
	1060	WORK	3'-3"	6'-10"	1 1/2"	NL	WD	ST	F1	DW	PREFIN								1102	CORRIDOR NORTH	3'-0"	6'-8"	1 3/4"	NL	WD	ST	F1	DW	PREFIN		012HK									
	1060A	WORK	3'-3"	6'-10"	1 1/2"	NL	WD	ST	F1	DW	PREFIN								1103	OFFICE	3'-0"	6'-8"	1 3/4"	EMB-2	SCHB	PT	F1	DW	PREFIN		034E03									
	1061	COMMONS	3'-0"	6'-8"	1 3/4"	F	WD	PT	F1	DW	PREFIN								1104	CORRIDOR NORTH	3'-0"	6'-8"	1 3/4"	EMB-2	SCHB	PT	F1	DW	PREFIN		034									
	1062	EXIT PASSAGEWAY	3'-0"	7'-0"	1 3/4"	FG	AL	AN	F1	AL	AN	IT							1105	CORRIDOR NORTH	3'-0"	6'-8"	1 3/4"	EMB-2	SCHB	PT	F1	DW	PREFIN		034									
	1062E	EXIT PASSAGEWAY	3'-0"	7'-0"	1 3/4"	F	HM	PT	F1	HM	PT								1106	CORRIDOR NORTH	3'-0"	6'-8"	1 3/4"	EMB-2	SCHB	PT	F1	DW	PREFIN		034	45								
	1063	COMMONS	6'-0"	6'-8"	1 3/4"	AP	WD	ST	F1	DW	PREFIN								1108	CORRIDOR NORTH	3'-0"	6'-8"	1 3/4"	EMB-2	SCHB	PT	F1	DW	PREFIN		03101									
	1064	SERVING KITCHEN	3'-0"	7'-0"	1"	F	WD	PLAM	F1	HM	PT	ACRYLIC		S					1110	NURSE	3'-0"	6'-8"	1 3/4"	EMB-2	SCHB	PT	F1	DW	PREFIN		012HK									
	1064A	COMMONS	3'-0"	6'-8"	1 3/4"	F	WD	PT	F1	DW	PREFIN								1115	DAYROOM	3'-0"	6'-8"	1 3/4"	AP	WD	ST	F1	DW	PREFIN		03101									
	1064B	DINING	6'-0"	8'-0"		F	WD	PT	F1	DW	PREFIN								A1-1	STAIR A	3'-0"	6'-8"	1 3/4"	AP	WD	ST	F1	DW	PREFIN		050A02	90								
	1067	CORRIDOR	3'-0"	6'-8"	1 3/4"	AP	WD	ST	F1	DW	PREFIN								A1-2	STAIR A	3'-0"	6'-8"	1 3/4"	AP	WD	ST	F1	DW	PREFIN		054A01	90								
	1068	HSKG	3'-0"	6'-8"	1 3/4"	F	WD	PT	F1	DW	PREFIN								A1-3	STAIR A	3'-0"	7'-0"	1 3/4"	FG	AL	AN	F1	AL	AN	IT	254X82									
	1068A	HSKG	3'-0"	6'-8"	1 3/4"	F	HM	PT	F1	HM	PT								B1-1	STAIR B	3'-0"	6'-8"	1 3/4"	AP	WD	ST	F1	AL	AN	IT	300C11	90								
	1069	OXY	3'-0"	6'-8"	1 3/4"	F	WD	PT	F1	DW	PREFIN								B1-2	STAIR B	3'-0"	7'-0"	1 3/4"	FG	AL	AN	F1	AL	AN	IT	254X82									
	1070	RES ENGAGE	3'-0"	6'-8"	1 3/4"	NL	WD	ST	F1	DW	PREFIN								C1-1	STAIR C	3'-0"	6'-8"	1 3/4"	AP	WD	ST	F1	DW	PREFIN		300C11	90								
	1073	RASH/LIN	3'-0"	6'-8"	1 3/4"	F	WD	PT	F1	DW	PREFIN								C1-2	STAIR C	3'-0"	7'-0"	1 3/4"	FG	AL	AN	F1	AL	AN	IT	254X82									
	1073A	SERVING KITCHEN	3'-0"	6'-8"	1 3/4"	F	WD	PT	F1	DW	PREFIN								D1-1	STAIR D	3'-0"	7'-0"	1 3/4"	FG	AL	AN	F1	AL	AN	IT	254X82	45								
	1074	CHAPEL	6'-0"	7'-0"	1 3/4"	F	HM	PT	F1A	HM	PT								D1-2	STAIR D	3'-0"	6'-8"	1 3/4"	AP	WD	ST	F1	AL	AN	IT	254X82	45								
	1074A	CHAPEL	6'-0"	7'-0"	1 3/4"	F	HM	PT	F1A	HM	PT								GATE	GATE	6'-0"	7'-0"	1 3/4"	F	HM	PT	F1A	HM	PT		050A02	90								
	1075	COMMONS	3'-0"	6'-8"	1 3/4"	NL	WD	ST	F1	DW	PREFIN								MC-GATE	MC-GATE	3'-0"	6'-8"	1 3/4"	AP	WD	ST	F1	DW	PREFIN		001C									
	1077	HSKG	3'-0"	6'-8"	1 3/4"	F	WD	PT	F1	DW	PREFIN								ST-CC1	DAYROOM	3'-0"	6'-8"	1 3/4"	AP	WD	ST	F1	DW	PREFIN											
	1078	COMMONS	3'-0"	6'-8"	1 3/4"	AP	WD	ST	F1	DW	PREFIN																													
	1079	COMMONS	8'-0"	7'-0"	1 3/4"	NL	HM	PT	F1	HM	PT	T																												
	1080	SOLEID	3'-0"	6'-8"	1 3/4"	EMB-2	SCHB	PT	F1	DW	PREFIN																													
	1081	CLEAN	3'-0"	6'-8"	1 3/4"	EMB-2	SCHB	PT	F1	DW	PREFIN																													

**in site architects**  
 1100 university ave. w. suite 130  
 st. paul, minnesota 55104  
 612-252-4820

I hereby certify that this document was prepared by me or under my direct supervision and that I am a duly licensed architect under the laws of the State of Washington.

Dawn Wiecezorek  
 Licensed Architect  
 License # 11192 X  
 Date

**WESLEY BRADLEY PARK  
 PHASE 2 - CARE CENTER**  
 707 39TH AVENUE SE  
 PUYALLUP, WA 98374

**LAND USE &  
 MX-DRO REVIEW  
 SUBMITTAL #2**  
 1/13/23

**REVISIONS**

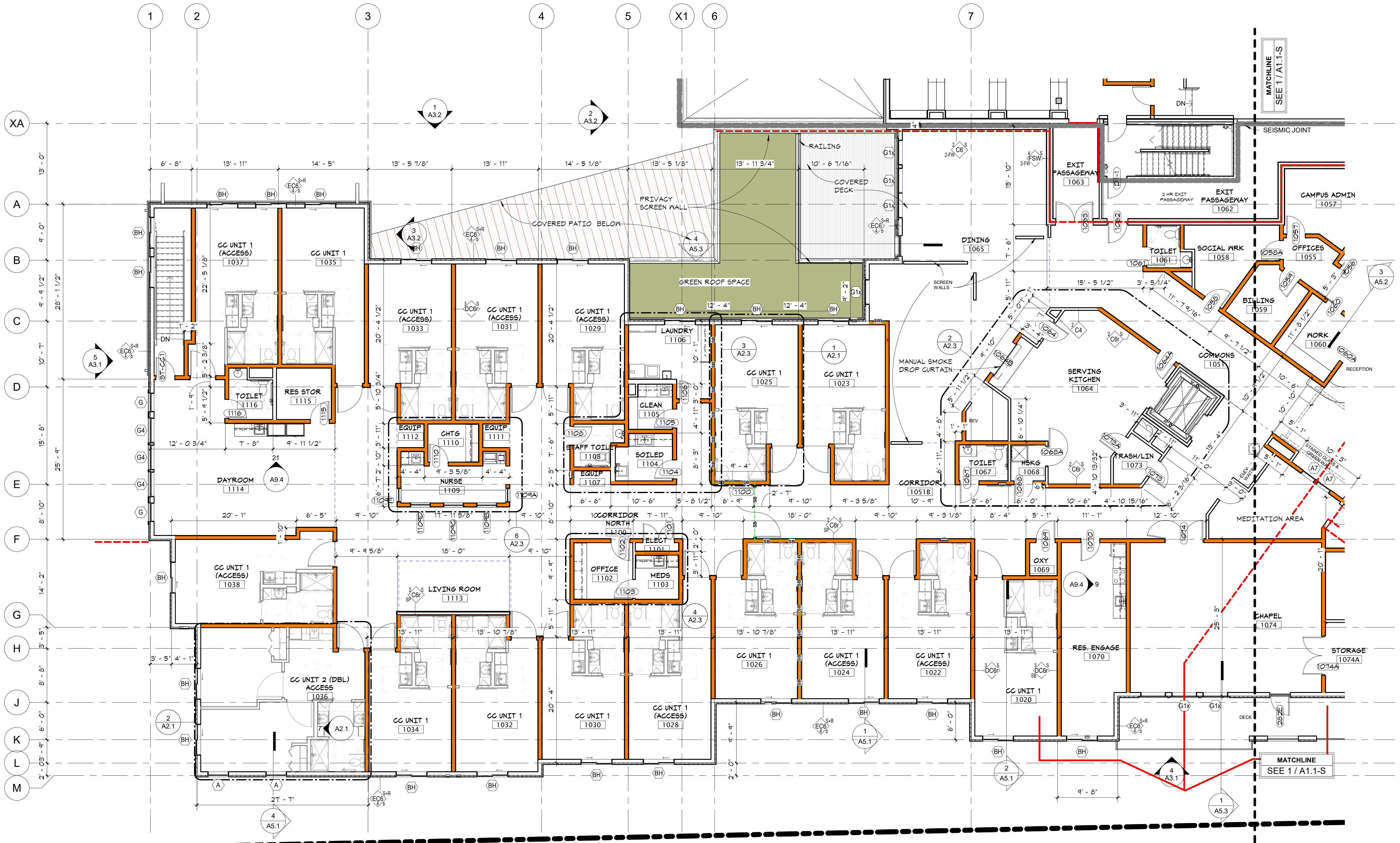
No.	Description	Date

2108  
 PROJECT NUMBER

Author \_\_\_\_\_ Checker \_\_\_\_\_  
 DRAWN BY \_\_\_\_\_ CHECKED BY \_\_\_\_\_

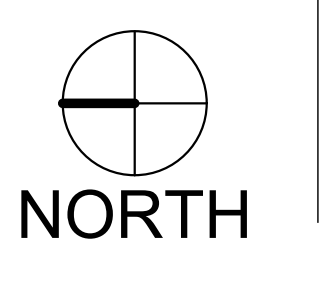
WESLEY BRADLEY PARK  
 PHASE 2 - CARE CENTER

LEVEL 1 - NORTH  
**A1.1-N**



- GENERAL PLAN NOTES**
- TYPICAL INTERIOR DIMENSIONS FOR SINGLE STUD WALLS ARE TO CENTER OF STUD. FOR MULTIPLE STUD WALLS DIMENSIONS ARE TO CENTER OF WALL ASSEMBLY. FURRING DIMENSIONS ARE TO FINISH, AND MASONRY DIMENSIONS ARE TO FACE OF WALL.
  - EXTERIOR DIMENSIONS ARE TO OUTSIDE FACE OF FOUNDATION & SHEATHING TO CENTERLINE OF WINDOWS.
  - PROVIDE ACCESS PANELS WHEREVER REQUIRED FOR ACCESS TO MECHANICAL AND/OR ELECTRICAL ITEMS. VERIFY WITH MECHANICAL AND ELECTRICAL AND COORDINATE EXACT LOCATION WITH ARCHITECT IF LOCATED IN FINISHED SPACES.
  - PRIME AND PAINT ALL EXPOSED EXTERIOR METALS, ETC. WHICH ARE NOT PREFINISHED, SUCH AS, BUT NOT LIMITED TO: STEEL LINTELS, BOLLARDS, ETC.
  - ALL STRUCTURAL STEEL TO BE (1) HOUR FIRE RATED. SEE STRUCTURAL PLANS FOR LOCATIONS AND QUANTITY OF STEEL BEAMS AND COLUMNS.
  - SEE SHEET A10.1 FOR WALL TYPES.
  - SEE A10 SERIES SHEETS TYPICAL INTERIOR DETAILS.
  - PAINT ALL ITEMS PENETRATING THE SLOPED ROOF TO MATCH ROOFING SUCH AS BUT NOT LIMITED TO VENT PIPES, FAN COVERS, ETC.
  - PROVIDE AN AUTOMATIC DRY SPRINKLER SYSTEM IN THE SLOPED AND FLAT ROOF ATTIC INSTEAD OF DRAFTSTOPPING.
  - SEE SHEETS A2 SERIES SHEETS FOR ENLARGED UNIT PLANS AND FLOOR PLANS.
  - AT RESIDENTIAL FLOORS, PROVIDE HANDRAIL ON ONE SIDE OF CORRIDOR. PROVIDE BLOCKING FOR FUTURE RAILING AT OPPOSITE SIDE.
  - SEE INTERIOR DESIGNER'S FINISH SCHEDULE FOR SEE 10 CHAIR & PICTURE RAILS.
  - FOR TYPICAL EXTERIOR AIR BARRIER INSTALLATION -

**1 PHASE 2 - LEVEL 1 - NORTH**  
 A1.1-N 1/8" = 1'-0"



1/13/2023 2:55:40 PM



- GENERAL ROOF NOTES**
1. ALL ROOF TOP MECHANICAL EQUIPMENT SHALL COMPLY WITH THE STANDARDS OF THE LOCAL MUNICIPAL CODE.
  2. SINGLE PLY ROOFING AREAS SHALL SLOPE A MINIMUM OF 1/4" PER FOOT.
  3. PROVIDE WALK PADS AROUND ALL MECH EQUIPMENT. SEE MECH FOR EQUIPMENT LAYOUT.
  4. SOFFIT DEPTHS VARY - SEE DETAILS.
  5. FOR SLOPES LESS THAN 4:12, FULL ICE & WATER SHIELD UNDERLAYMENT SHALL BE USED.



I hereby certify that this document was prepared by me or under my direct supervision and that I am a duly licensed architect under the laws of the State of Washington

Dawn Wieczorek  
Typed or Printed Name  
11192 X  
License # Date

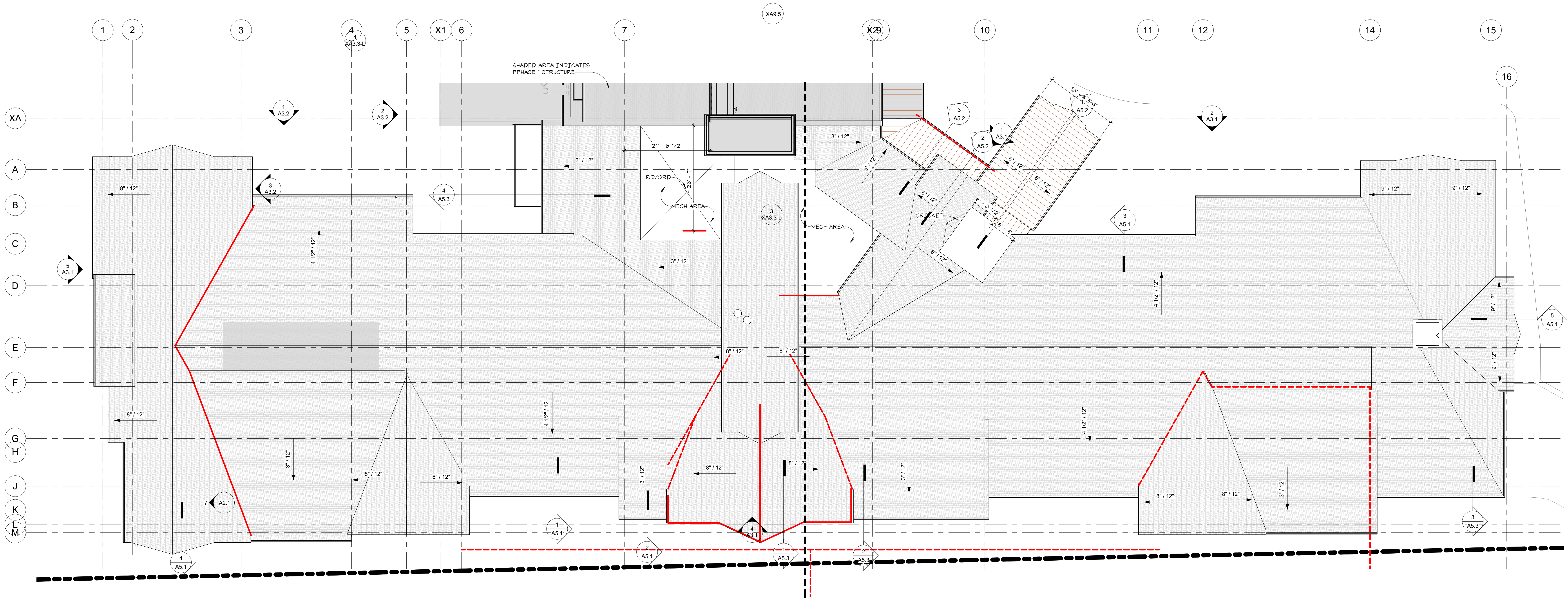
**WESLEY BRADLEY PARK  
PHASE 2 - CARE CENTER**  
707 39TH AVENUE SE  
PUYALLUP, WA 98374

LAND USE & MX-DRO REVIEW  
SUBMITTAL #2  
1/13/23

REVISIONS	Description	Date
3	A5.1	

2108  
PROJECT NUMBER  
Author \_\_\_\_\_ Checker \_\_\_\_\_  
DRAWN BY \_\_\_\_\_ CHECKED BY \_\_\_\_\_  
WESLEY BRADLEY PARK  
PHASE 2 - CARE CENTER

ROOF PLAN  
**A1.2**



**1 PHASE 2 - ROOF PLAN**  
A1.2 3/32" = 1'-0"

1/13/2023 5:26:18 PM



insite architects

1000 university ave. w. suite 130  
st. paul, minnesota 55104  
612-252-4820

I hereby certify that this document was prepared by me or under my direct supervision and that I am a duly licensed architect under the laws of the State of Washington

Dawn Wieczorek  
Typed or Printed Name  
11192 X  
License # Date

WESLEY BRADLEY PARK  
PHASE 2 - CARE CENTER  
707 39TH AVENUE SE  
PUYALLUP, WA 98374

LAND USE & MX-DRO REVIEW  
SUBMITTAL #2  
1/13/23

REVISIONS		
No.	Description	Date
1	xxx	xxx

2108  
PROJECT NUMBER  
Author \_\_\_\_\_ Checker \_\_\_\_\_  
DRAWN BY \_\_\_\_\_ CHECKED BY \_\_\_\_\_  
WESLEY BRADLEY PARK  
PHASE 2 - CARE CENTER

EXTERIOR ELEVATIONS

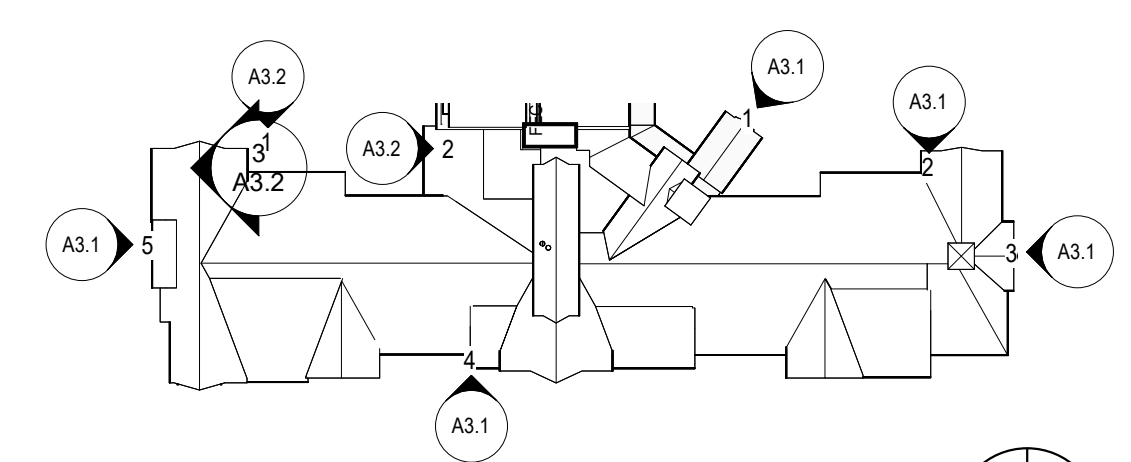
A3.1

KEYNOTE LEGEND	
Key Value	Keynote Text
1A	BRICK COLOR #1
2	CIP CONCRETE
3	MANUFACTURED STONE CAP/SILL/WATERTABLE
3A	MANUFACTURED STONE VENEER #1
4	FIBER CEMENT LAP SIDING
4B	FIBER CEMENT PANEL
4C	FIBER CEMENT PANEL-BOARD & BATTEN
4D	FIBER CEMENT TRIM
5A	PREFIN GUTTER
5B	PREFIN DOWNSPOUT
5D	KYNAR FINISH CUT METAL PANEL
5E	PREFIN CORRUGATED METAL

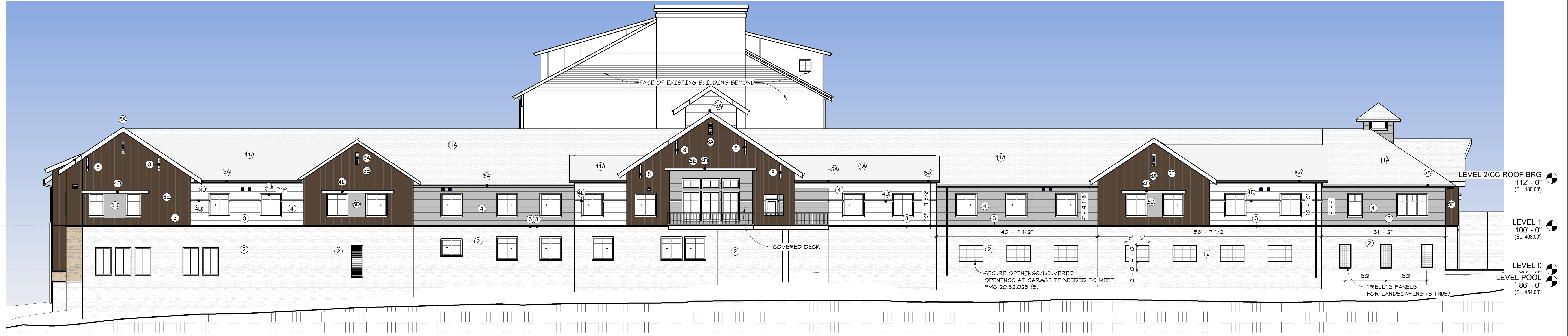
KEYNOTE LEGEND	
Key Value	Keynote Text
5F	PREFIN STANDING SEAM ROOF
5G	PREFIN METAL SOFFIT PANELS
5H	PREFIN METAL PANEL (STAINED WOOD LOOK)
6A	STUCCO COLOR #1
6B	STUCCO COLOR #2
7A	VINYL WINDOWS
7C	ALUMINUM ENTRANCE DOOR
8	DECORATIVE BRACKET - PAINTED
8A	WINDOW BOX
9	DECORATIVE WALL-MOUNTED LIGHT FIXTURE
10	FIBER CEMENT WRAPPED COLUMN W/TRIM
11	CLAY TILE SHINGLES
11A	ASPHALT SHINGLES

	LAP SIDING - 2 COLORS
	CORRUGATED METAL SIDING - VERTICAL RIBS
	MANUFACTURED VENEER STONE
	SHOTCRETE CAST STONE
	COPPER LOOK METAL PANEL

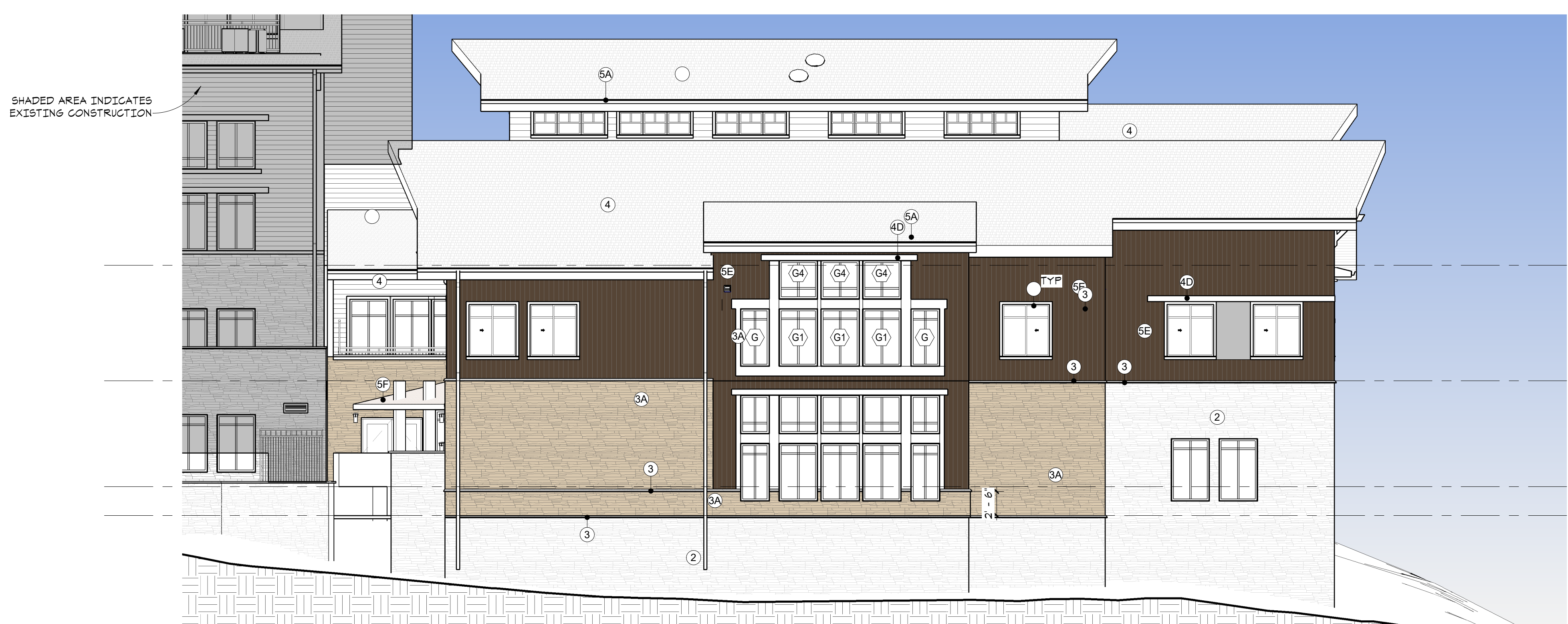
EXTERIOR FINISH KEY  
1/8" = 1'-0"



PHASE 2 - KEYPLAN A3.1  
1" = 80'-0"  
NORTH



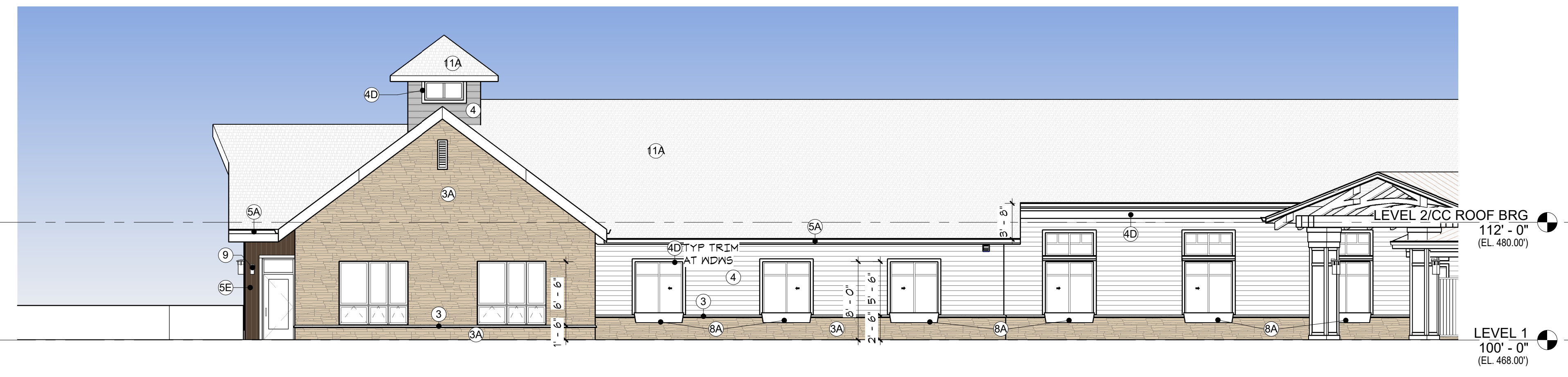
4 EXTERIOR ELEVATION - CC WEST  
A3.1 3/32" = 1'-0"



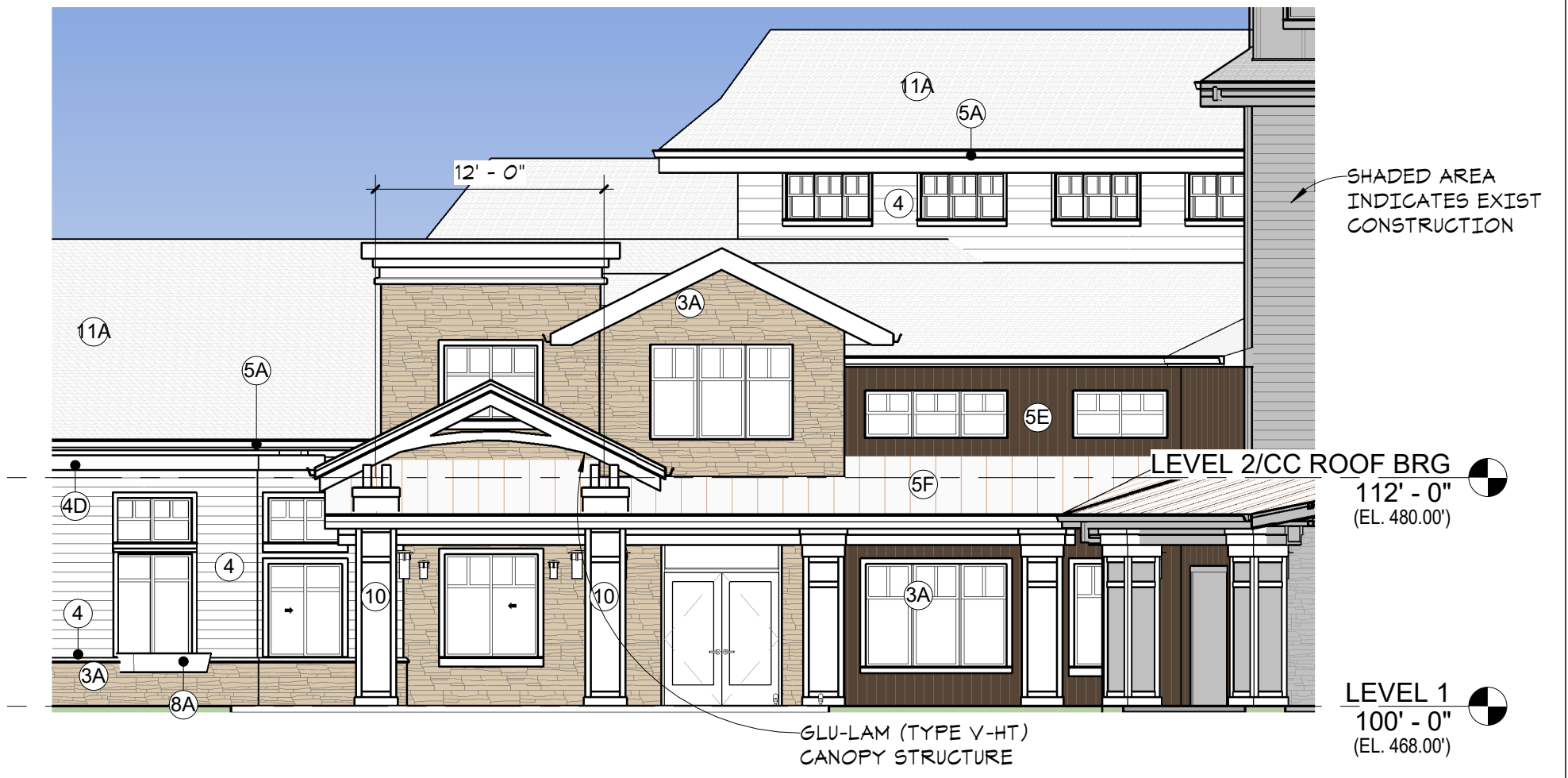
5 EXTERIOR ELEVATION - CC NORTH  
A3.1 1/8" = 1'-0"



3 EXTERIOR ELEVATION - CC SOUTH  
A3.1 1/8" = 1'-0"



2 EXTERIOR ELEVATION - CC EAST  
A3.1 1/8" = 1'-0"



1 EXTERIOR ELEVATION - CC ENTRY  
A3.1 1/8" = 1'-0"

1/13/2023 1:26:37 PM





in site architects

1000 university ave. w. # suite 130  
st. paul, minnesota 55104  
612-252-4820

I hereby certify that this document was prepared by me or under my direct supervision and that I am a duly licensed architect under the laws of the State of Washington

Dawn Wiczorek  
Typed or Printed Name  
11192 X  
License # Date

WESLEY BRADLEY PARK  
PHASE 2 - CARE CENTER  
707 39TH AVENUE SE  
PUYALLUP, WA 98374

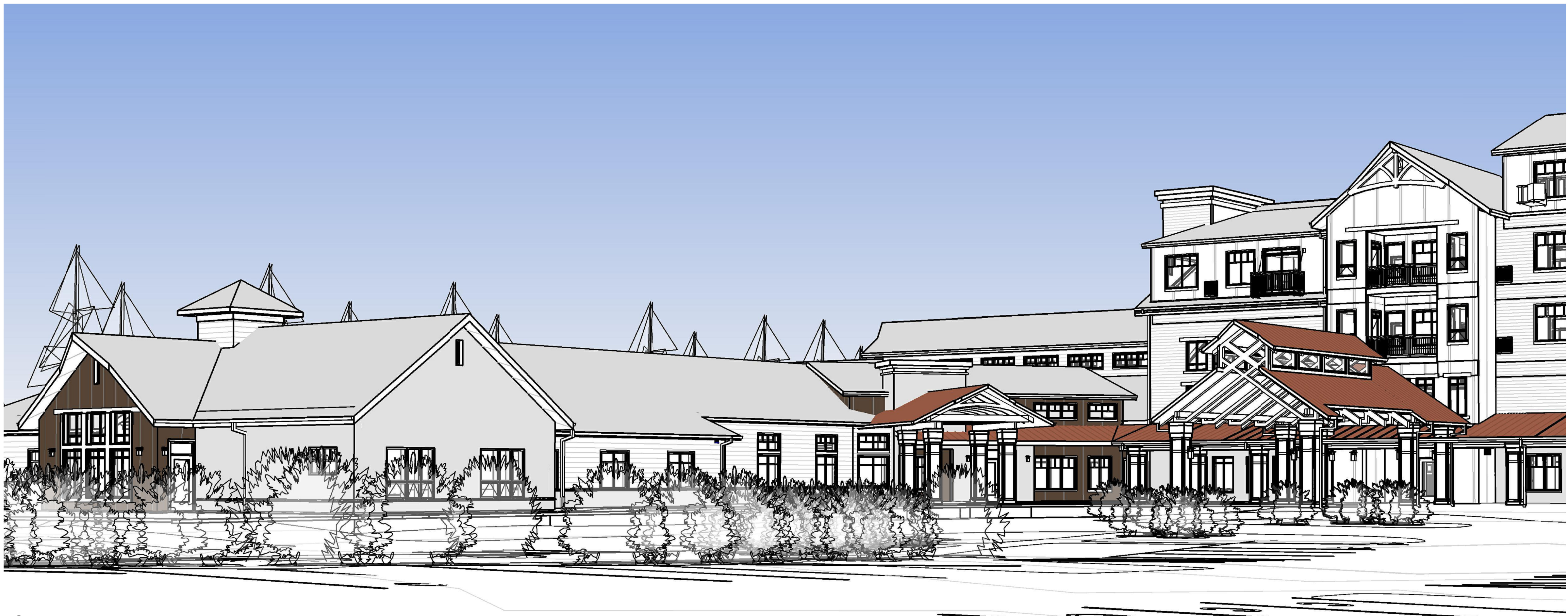
LAND USE & MX-DRO REVIEW  
SUBMITTAL #2  
1/13/23

REVISIONS  
No. Description Date

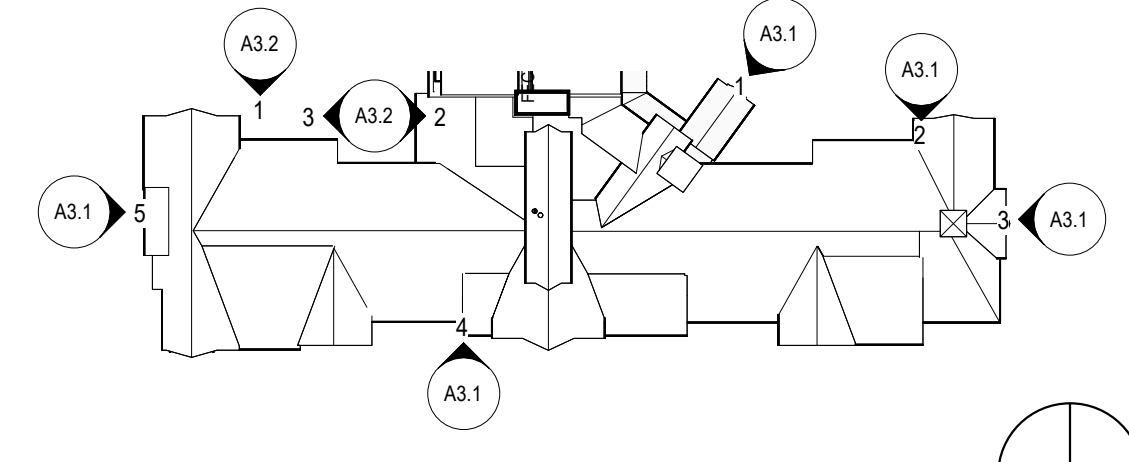
2108  
PROJECT NUMBER  
Author Checker  
DRAWN BY CHECKED BY  
WESLEY BRADLEY PARK  
PHASE 2 - CARE CENTER

EXTERIOR ELEVATIONS

A3.2



X PHASE 2 CARE CENTER - ENTRY  
A3.2



PHASE 2 - KEYPLAN A3.2  
1" = 80'-0"



Key Value	Keynote Text
1A	BRICK COLOR #1
2	CIP CONCRETE
3	MANUFACTURED STONE CAP/SILL/WATERTABLE
3A	MANUFACTURED STONE VENEER #1
4	FIBER CEMENT LAP SIDING
4B	FIBER CEMENT PANEL
4C	FIBER CEMENT PANEL-BOARD & BATTEN
4D	FIBER CEMENT TRIM
5A	PREFIN GUTTER
5B	PREFIN DOWNSPOUT
5D	KYNAR FINISH CUT METAL PANEL
5E	PREFIN CORRUGATED METAL
5F	PREFIN STANDING SEAM ROOF
5G	PREFIN METAL SOFFIT PANELS
5H	PREFIN METAL PANEL (STAINED WOOD LOOK)
6A	STUCCO COLOR #1
6B	STUCCO COLOR #2
7A	VINYL WINDOWS
7C	ALUMINUM ENTRANCE DOOR
8	DECORATIVE BRACKET - PAINTED
8A	WINDOW BOX
9	DECORATIVE WALL-MOUNTED LIGHT FIXTURE
10	FIBER CEMENT WRAPPED COLUMN W/TRIM
11	CLAY TILE SHINGLES
11A	ASPHALT SHINGLES

**EXTERIOR FINISH KEY**  
1/8" = 1'-0"

- LAP SIDING - 2 COLORS
- CORRUGATED METAL SIDING - VERTICAL RIBS
- MANUFACTURED VENEER STONE
- SHOTCRETE CAST STONE
- COPPER LOOK METAL PANEL

MAT'L TAKEOFF_WALLS	
Material: Name	Material: Area
Copper-Look Metal Panel	114
Metal - Corrugated	5,419
Siding - Clapboard	3,940
Stone - Ashlar Dry Stack-Natural Color-Warm(1)	3,314
Stone Textured Shotcrete	5,271
<b>18,058</b>	

TOTAL MATERIAL %	
METAL: 28%	
SIDING: 23%	
MANUFACTURED STONE: 16%	
CONCRETE: 33%	

MAT'L TAKEOFF_WALLS	
Material: Name	Material: Area
Copper-Look Metal Panel	0
Metal - Corrugated	731
Siding - Clapboard	0
Stone - Ashlar Dry Stack-Natural Color-Warm(1)	1,583
Stone Textured Shotcrete	5,271
<b>7,585</b>	

LEVEL 0 MATERIAL %	
METAL: 10%	
MANUFACTURED STONE: 20%	
CONCRETE: 10%	

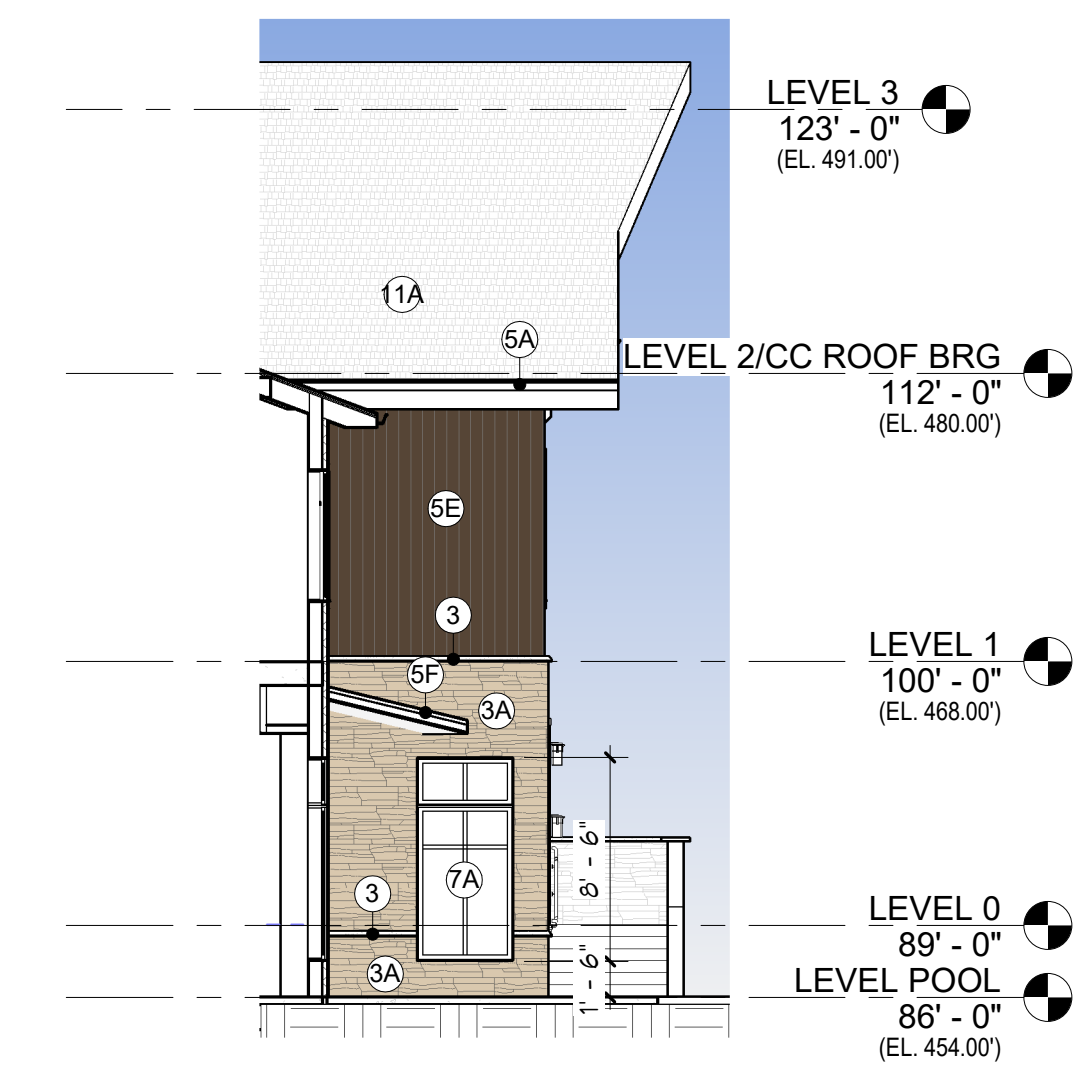
MIN 30% COVERAGE BY 2 MATERIALS - COMPLIANT PER PMC 25.52.025 (6)  
MIN 60% COVERAGE BY HIGH QUALITY (TEXTURED CONCRETE TO LOOK LIKE STONE) - COMPLIANT PER PMC 25.52.025 (6)

MAT'L TAKEOFF_WALLS	
Material: Name	Material: Area
Copper-Look Metal Panel	114
Metal - Corrugated	4,688
Siding - Clapboard	3,940
Stone - Ashlar Dry Stack-Natural Color-Warm(1)	1,731
Stone Textured Shotcrete	0
<b>10,473</b>	

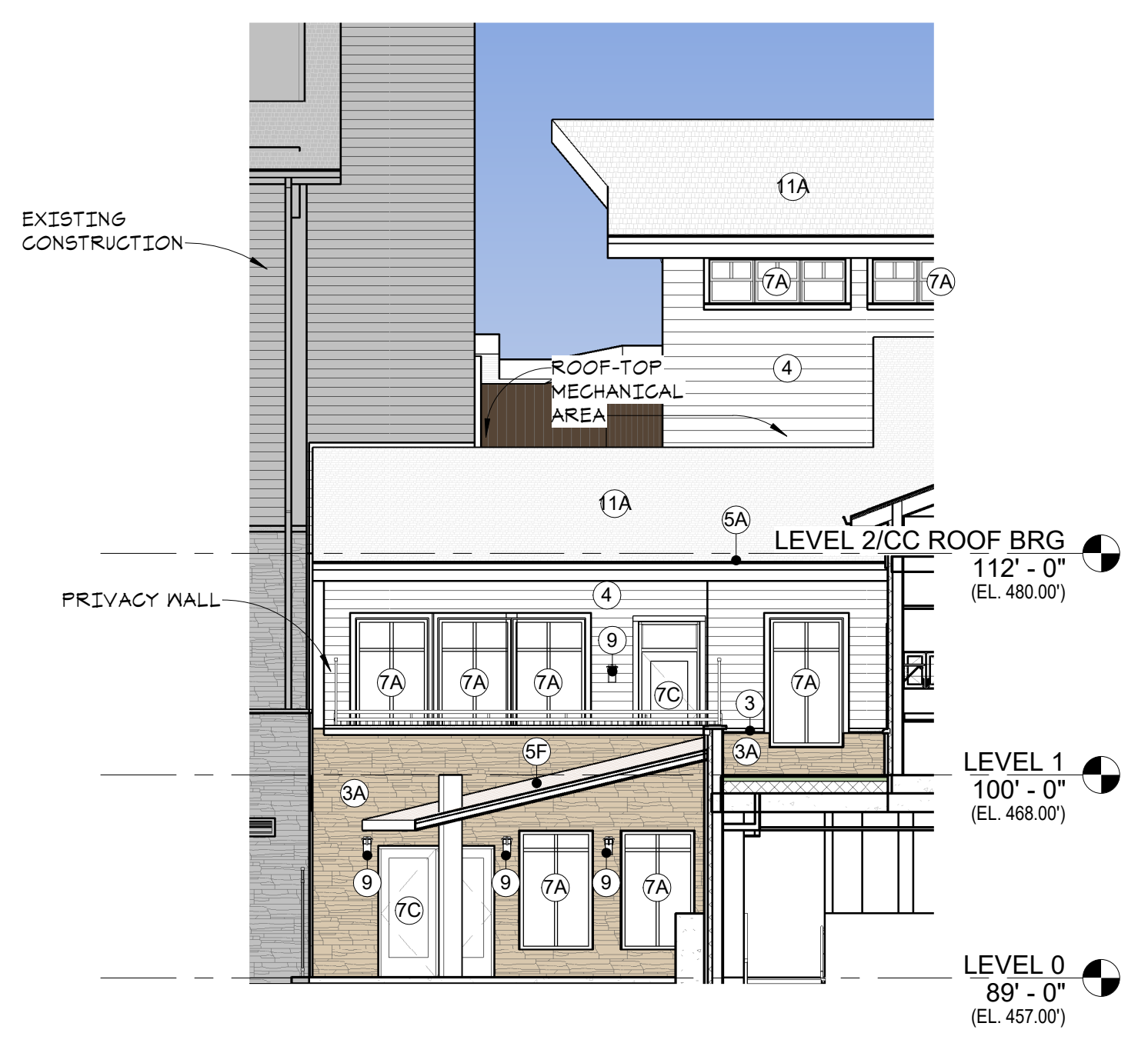
LEVEL 1 MATERIAL %	
METAL: 46%	
FIBER CEMENT: 31.5%	
MANUFACTURED STONE: 16.5%	
CONCRETE: 0%	

MIN 30% COVERAGE BY 2 MATERIALS - COMPLIANT PER PMC 25.52.025 (6)  
AND  
MIN 60% COVERAGE BY HIGH QUALITY MATERIALS - 62.5% PROVIDED/COMPLIANT PER PMC 25.52.025 (6)

NOTE: THIS BUILDING IS NOT LOCATED ON A PUBLIC STREET OR TRAIL, THEREFORE COMPLIANCE WITH PMC 20.52.025 (2) HAS NOT BEEN CALCULATED.



3 EXTERIOR ELEVATION - CC SOUTH RETURN  
A3.2 1/8" = 1'-0"



2 EXTERIOR ELEVATION - CC WELLNESS (NORTH)  
A3.2 1/8" = 1'-0"



1 EXTERIOR ELEVATION - CC WELLNESS (EAST)  
A3.2 1/8" = 1'-0"

1/13/2023 3:26:48 PM