



insite
architects

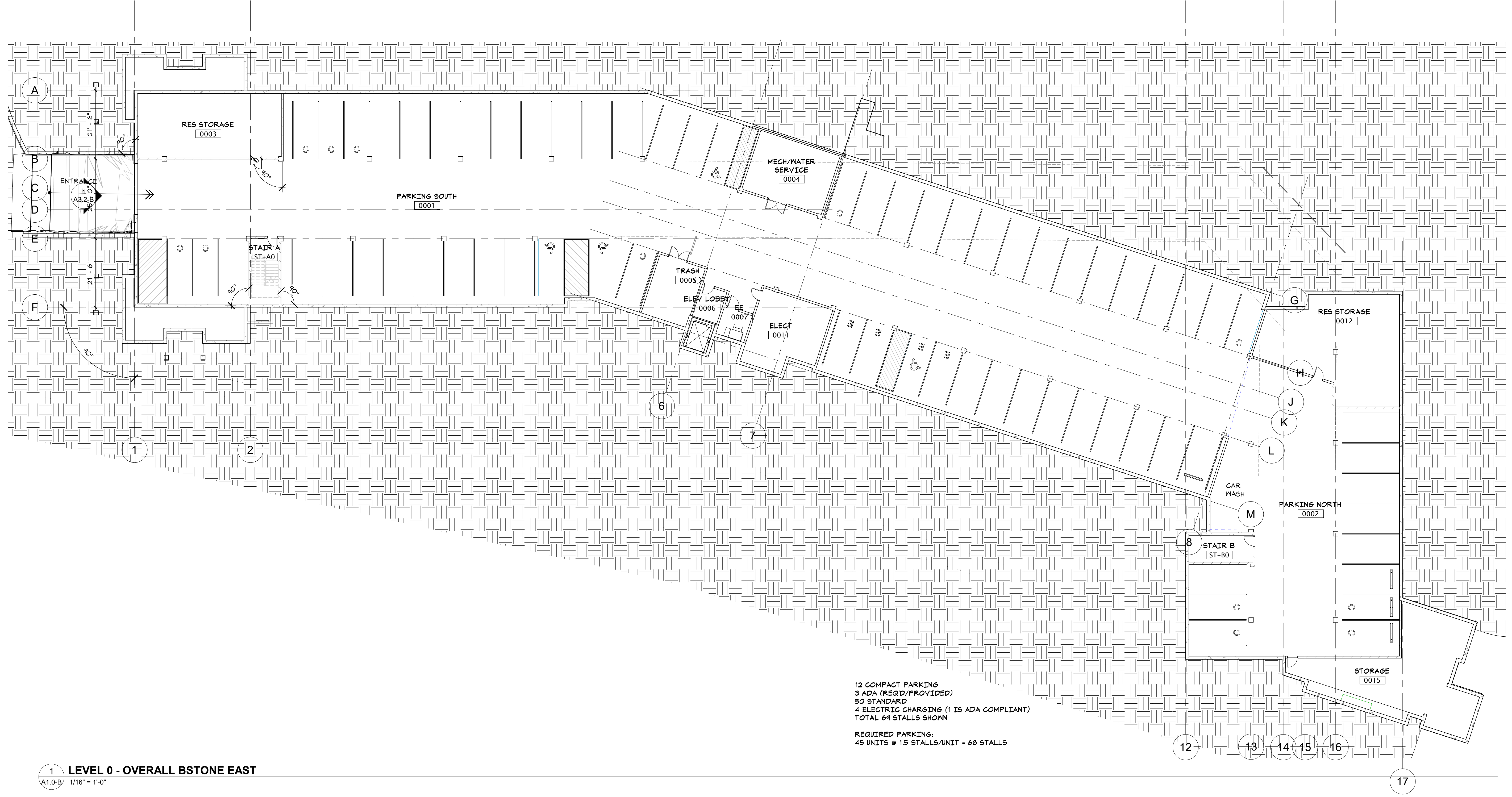
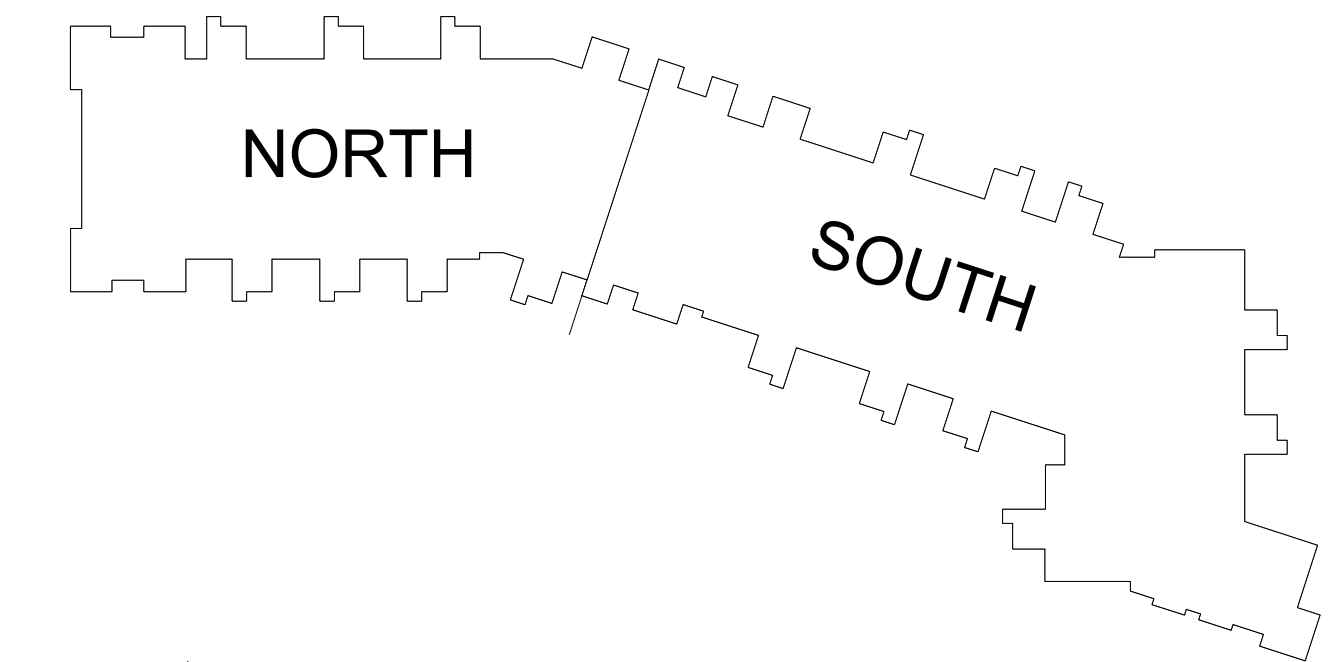
1000 university ave. w. # suite 130
st. paul, minnesota 55104
612-952-4820

I hereby certify that this document was prepared by me or under my direct supervision and that I am a duly licensed architect under the laws of the State of Washington

Dawn Wiczorek
Typed or Printed Name

11192 X
License # Date

- GENERAL PLAN NOTES**
1. TYPICAL INTERIOR DIMENSIONS FOR SINGLE STUD WALLS ARE TO FACE OF STUD, FOR MULTIPLE STUD WALLS DIMENSIONS ARE TO CENTER OF WALL ASSEMBLY, FURRING DIMENSIONS ARE TO FINISH, AND MASONRY DIMENSIONS ARE TO FACE OF WALL.
 2. EXTERIOR DIMENSIONS ARE TO OUTSIDE FACE OF CMU FOUNDATION & SHEATHING AND TO CENTERLINE OF WINDOWS.
 3. PROVIDE ACCESS PANELS WHEREVER REQUIRED FOR ACCESS TO MECHANICAL AND/OR ELECTRICAL ITEMS. VERIFY WITH MECHANICAL AND ELECTRICAL, AND COORDINATE EXACT LOCATION WITH ARCHITECT IF LOCATED IN FINISHED SPACES.
 4. PRIME AND PAINT ALL EXPOSED EXTERIOR METALS, ETC. WHICH ARE NOT PREFINISHED. SUCH AS, BUT NOT LIMITED TO: STEEL LINTELS, BOLLARDS, ETC.
 5. ALL STRUCTURAL STEEL TO BE (1) HOUR FIRE RATED. SEE STRUCTURAL PLANS FOR LOCATIONS AND QUANTITY OF STEEL BEAMS AND COLUMNS.
 6. SEE SHEET A10.1 FOR WALL TYPES.
 7. SEE A10 SERIES SHEETS FOR TYPICAL INTERIOR DETAILS.
 8. PAINT ALL ITEMS PENETRATING THE SLOPED ROOF TO MATCH ROOFING SUCH AS BUT NOT LIMITED TO VENT PIPES, FAN COVERS, ETC.
 9. PROVIDE AN AUTOMATIC DRY SPRINKLER SYSTEM IN THE ATTIC INSTEAD OF DRAFTSTOPPING.
 10. SEE SHEETS A2 SERIES SHEETS FOR ENLARGED UNIT PLANS AND FLOOR PLANS.
 11. AT RESIDENTIAL FLOORS, PROVIDE HANDRAIL ON ONE SIDE OF CORRIDOR. PROVIDE BLOCKING FOR FUTURE RAILING AT OPPOSITE SIDE.
 12. SEE INTERIOR DESIGNER'S FINISH SCHEDULE FOR LOCATION OF PICTURE & CHAIR RAILS.
 13. FOR TYPICAL AIR BARRIER INSTALLATION - 15 - 19/A6.2
 14. SEE SHEET A10.4 FOR TYPICAL FIRESTOPPING PENETRATION DETAILS.



12 COMPACT PARKING
3 ADA (REQ'D/PROVIDED)
50 STANDARD
4 ELECTRIC CHARGING (1 IS ADA COMPLIANT)
TOTAL 64 STALLS SHOWN

REQUIRED PARKING:
45 UNITS @ 1.5 STALLS/UNIT = 68 STALLS

1 LEVEL 0 - OVERALL BSTONE EAST
A1.0-B 1/16" = 1'-0"

WESLEY BRADLEY PARK 2
EAST BROWNSTONE
707 39TH AVENUE SE
PUYALLUP, WA 98374

LAND USE & MX-DRO REVIEW
SUBMITTAL #2
1/13/23

ORIGINAL ISSUE:
REVISIONS

No.	Description	Date

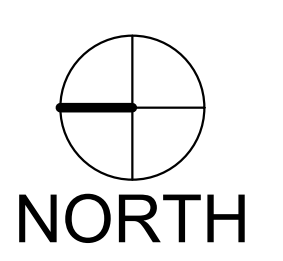
2108
PROJECT NUMBER

Author _____ Checker _____
DRAWN BY _____ CHECKED BY _____

WESLEY BRADLEY PARK 2
EAST BROWNSTONE

GARAGE LEVEL OVERALL
PLANS

A1.0-B



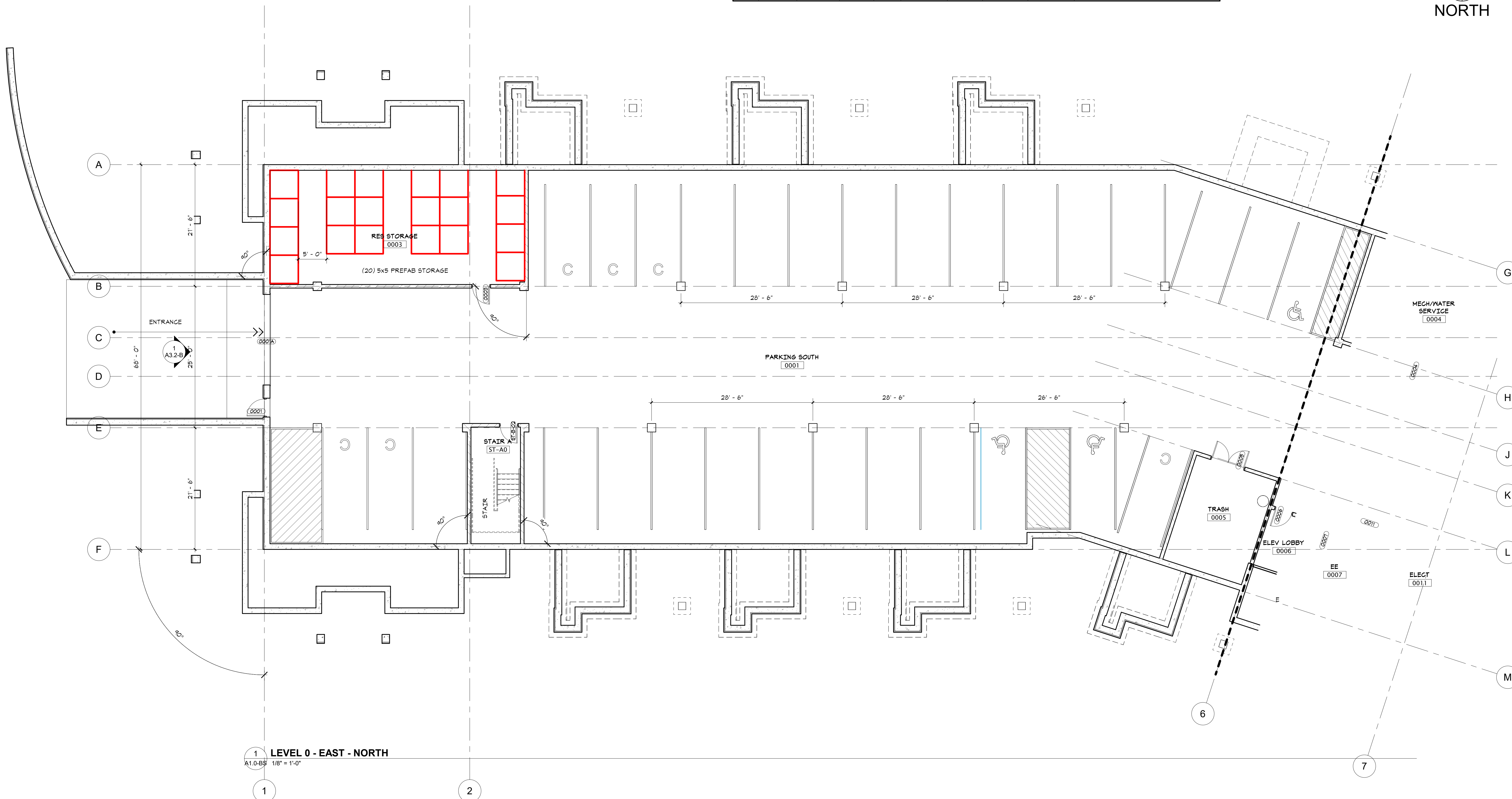
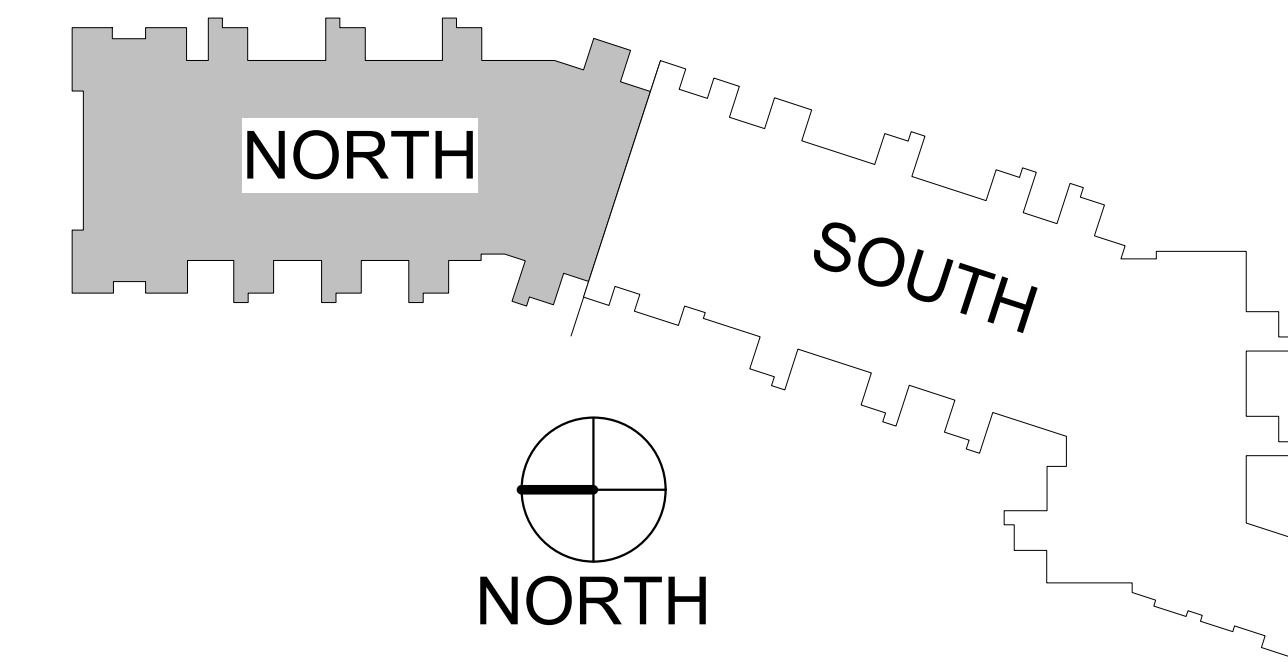
ROOM FINISH SCHEDULE NOTES			
1. CROWN MOULDING			
2. PICTURE RAIL - TOP @ 6" - 0" AFF.			
SEE INTERIOR DESIGNER'S FINISH SCHEDULE FOR LOCATION OF PICTURE & CHAIR RAILS			
ROOM FINISH ABBREVIATIONS			
ACT	ACOUSTICAL CEILING TILE ABOVE FINISHED FLOOR	INT	INTERIOR LUXURY VINYL TILE
BD	BOARD	MFR	MANUFACTURER MEMBRANE
CM	CULTURED MARBLE	MTL	METAL
CPT	CARPET	NC	NOT IN CONTRACT
CT	CERAMIC TILE	PT	PAINTED
CONC	CONCRETE	PNL	PANEL
CMU	CONCRETE MASONRY UNIT	PLAM	PLASTIC LAMINATE
DM	DIMENSION	RCP	REFLECTED CEILING PLAN
DR	DOOR	RM	ROOM
EPT	EPOXY PAINT	SCONC	SEALED CONCRETE
EXIST	EXISTING	SS	SOLID SURFACE
FRP	FIBER REINFORCED PLASTIC	SST	STAINLESS STEEL
FIN	FINISH	STN	STONE
FF	FINISH FLOOR	TV	TELEVISION
FFE	FURNITURE FIXTURES & EQUIPMENT	VB	VINYL BASE
GC	GENERAL CONTRACTOR	WC	WALL COVERING
GYP	GYPSUM	WD	WOOD
HT	HEIGHT		
HM	HOLLOW METAL		

DOOR AND WINDOW NOTES			
1. FIRE RATING LABELS ARE SHOWN IN MINUTES UNO.			
2. UNDERCUT AT ALL INTERIOR DOORS UNO.			
3. DOOR HARDWARE TO BE CENTERED ON RAIL OF PANEL DOORS.			
4. SEE A11.1 FOR DOOR TYPES			
5. REFER TO ELEVATIONS AND PLANS FOR WINDOWS LOCATIONS REQUIRING SAFETY GLAZING TO MEET IBC 2406.			
GLAZING TYPES			
IN 1" INSULATED NON-TEMPERED			
IT 1" INSULATED TEMPERED			
P 1/4" PLATE GLASS			
T 1/4" TEMPERED			
F 1/4" FROSTED GLASS			
W 1/4" WIRED GLASS			
DOOR AND WINDOW ABBREVIATIONS			
ALUM	ALUMINUM	NL	NARROW LITE
AP	FLUSH W/ APPLIED MLDG	OC	OVERHEAD COILING
CL	CHAIN LINK	OH	OVERHEAD SEGMENTAL
DW	DRYWALL	PLAM	PLASTIC LAMINATE
F	FLUSH	PREFIN	PRE-FINISHED
FG	FULL GLASS	PT	PAINT
FRP	FIBERGLASS	RP	RAISED PANEL
REINFORCED	PLASTIC	RP	SOLID CORE HARDBOARD
HCHB	HOLLOW CORE HARDBOARD	SCR	SCREEN
HCW	HOLLOW CORE WOOD	SCW	SOLID CORE WOOD
HM	HOLLOW METAL	ST	STAIN
HMKD	HOLLOW METAL KNOCKED DOWN	STL	STEEL
IF	INSULATED FIBERGLASS	TR	TRAFFIC DOOR (SOLID CORE)
IM	INSULATED METAL	CLWD	CLAD WOOD
		WD	WOOD

0-DOOR SCHEDULE - GARAGE LEVEL																
REV	DR #	Room Name	Width	HT	THK	TYPE	MATL	FIN	FRAME		HDWR	Label	GLASS		Comments	
									Type	MATL			FIN	Sideli		Auto-Op
LEVEL 0																
0005		TRASH	6' - 0"	7' - 0"	1 3/4"	F	HM	PT	F1A	HM	PREFIN			IT	Yes	Yes
0006		PARKING SOUTH	3' - 0"	6' - 8"	1 3/4"	NL	HM	PT	F1A	HM	PT			T		
0007		EE	3' - 0"	7' - 0"	1 3/4"	F	HM	PT	F1A	HM	PT					
0012		PARKING NORTH	3' - 0"	6' - 8"	1 3/4"	FG	WD	ST	F1	HM	PT					
0015		PARKING NORTH	3' - 0"	6' - 8"	1 3/4"	AP	HM	PT	F1	HM	PT					
ST-B0		PARKING NORTH	3' - 0"	6' - 8"	1 3/4"	AP	HM	PT	F1	HM	PT					

- | GENERAL PLAN NOTES |
|--|
| 1. TYPICAL INTERIOR DIMENSIONS FOR SINGLE STUD WALLS ARE TO FACE OF STUD. FOR MULTIPLE STUD WALLS DIMENSIONS ARE TO CENTER OF WALL ASSEMBLY. FURRING DIMENSIONS ARE TO FINISH, AND MASONRY DIMENSIONS ARE TO FACE OF WALL. |
| 2. EXTERIOR DIMENSIONS ARE TO OUTSIDE FACE OF CMU FOUNDATION & SHEATHING AND TO CENTERLINE OF WINDOWS. |
| 3. PROVIDE ACCESS PANELS WHEREVER REQUIRED FOR ACCESS TO MECHANICAL AND/OR ELECTRICAL ITEMS. VERIFY WITH MECHANICAL AND ELECTRICAL, AND COORDINATE EXACT LOCATION WITH ARCHITECT IF LOCATED IN FINISHED SPACES. |
| 4. PRIME AND PAINT ALL EXPOSED EXTERIOR METALS, ETC. WHICH ARE NOT PREFINISHED, SUCH AS, BUT NOT LIMITED TO: STEEL LINTELS, BOLLARDS, ETC. |
| 5. ALL STRUCTURAL STEEL TO BE (1) HOUR FIRE RATED. SEE STRUCTURAL PLANS FOR LOCATIONS AND QUANTITY OF STEEL BEAMS AND COLUMNS. |
| 6. SEE SHEET A10.1 FOR WALL TYPES. |
| 7. SEE A10 SERIES SHEETS FOR TYPICAL INTERIOR DETAILS. |
| 8. PAINT ALL ITEMS PENETRATING THE SLOPED ROOF TO MATCH ROOFING SUCH AS BUT NOT LIMITED TO VENT PIPES, FAN COVERS, ETC. |
| 9. PROVIDE AN AUTOMATIC DRY SPRINKLER SYSTEM IN THE ATTIC INSTEAD OF DRAFTSTOPPING. |
| 10. SEE SHEETS A2 SERIES SHEETS FOR ENLARGED UNIT PLANS AND FLOOR PLANS. |
| 11. AT RESIDENTIAL FLOORS, PROVIDE HANDRAIL ON ONE SIDE OF CORRIDOR. PROVIDE BLOCKING FOR FUTURE RAILING AT OPPOSITE SIDE. |
| 12. SEE INTERIOR DESIGNER'S FINISH SCHEDULE FOR LOCATION OF PICTURE & CHAIR RAILS. |
| 13. FOR TYPICAL AIR BARRIER INSTALLATION - 15 - 19/A6.2 |
| 14. SEE SHEET A10.4 FOR TYPICAL FIRESTOPPING PENETRATION DETAILS. |

ROOM FINISH SCHEDULE - GARAGE LEVEL									
REV	NUMBER	NAME	FLOOR FINISH	BASE	WALLS		CEILINGS		COMMENTS
					MATERIAL	FINISH	MATERIAL	FINISH	
LEVEL 0									
0001		PARKING SOUTH	SCONC		CONC		CONC	INSUL	
0002		STORAGE	SCONC	VB1	CONC	PT	CONC	INSUL	
0003		RES STORAGE	VCT	VB1	CONC	PT	CONC	INSUL	
0004		ELEV EQUIP	SCONC	VB1	CONC		CONC	INSUL	
0005		TRASH	SCONC	VB1	CONC	EPT	CONC	INSUL	
0006		STORAGE	SCONC	VB1	CONC	PT	CONC	INSUL	
0007		PHONE/DATA	SCONC	VB1	CONC	PT	CONC	INSUL	
0011		ELECT							
0012		RES STORAGE							
0015		STAIR A	CPT	WD		PT	CONC		
ST-A0		STAIR A	CPT	WD		PT	CONC		
ST-B0		STAIR B							



1 LEVEL 0 - EAST - NORTH
A1.0-BS 1/8" = 1'-0"



1000 university ave. w. suite 130
st. paul, minnesota 55104
612-252-4820

I hereby certify that this document was prepared by me or under my direct supervision and that I am a duly licensed architect under the laws of the State of Washington.

Dawn Wieczorek
Typed or Printed Name
11192 X
License # Date

WESLEY BRADLEY PARK 2
EAST BROWNSTONE
707 39TH AVENUE SE
PUYALLUP, WA 98374

LAND USE & MX-DRO REVIEW
SUBMITTAL #2
1/13/23

ORIGINAL ISSUE:
REVISIONS
No. Description Date

2108
PROJECT NUMBER
Author Checker
DRAWN BY CHECKED BY
WESLEY BRADLEY PARK 2
EAST BROWNSTONE

GARAGE LEVEL
BROWNSTONE B - SOUTH
A1.0-BS



in site
architects

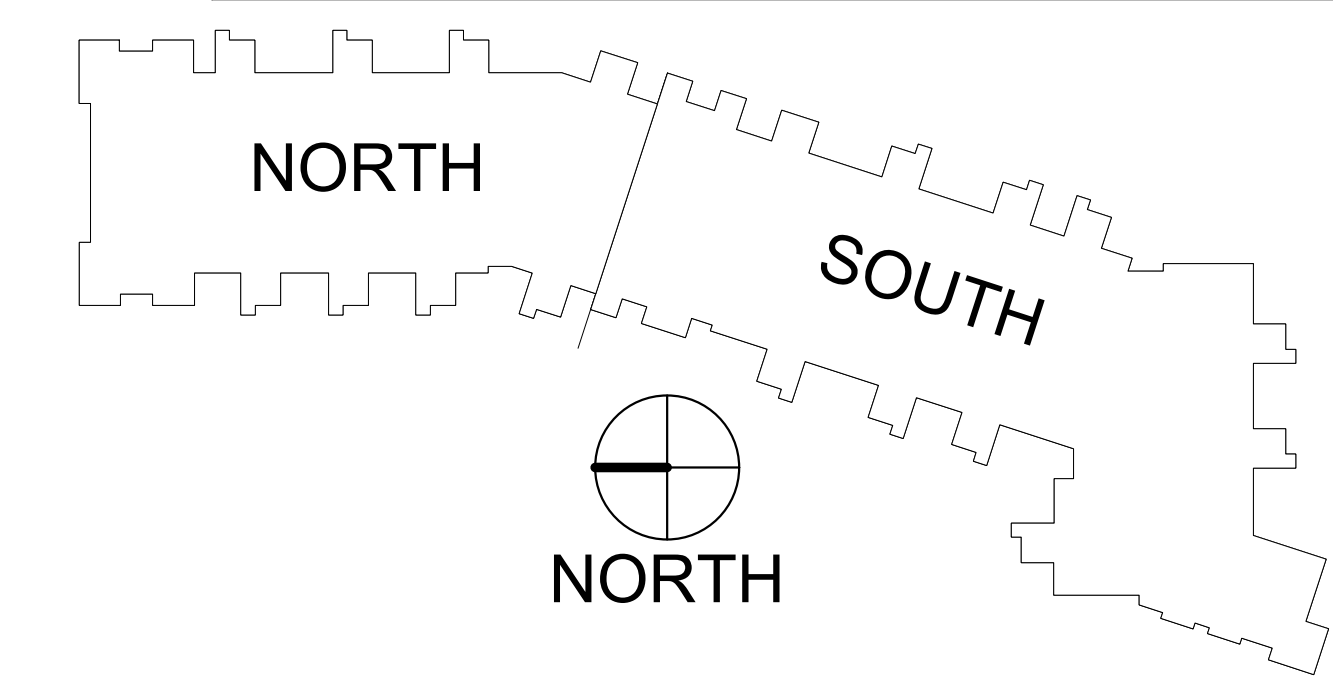
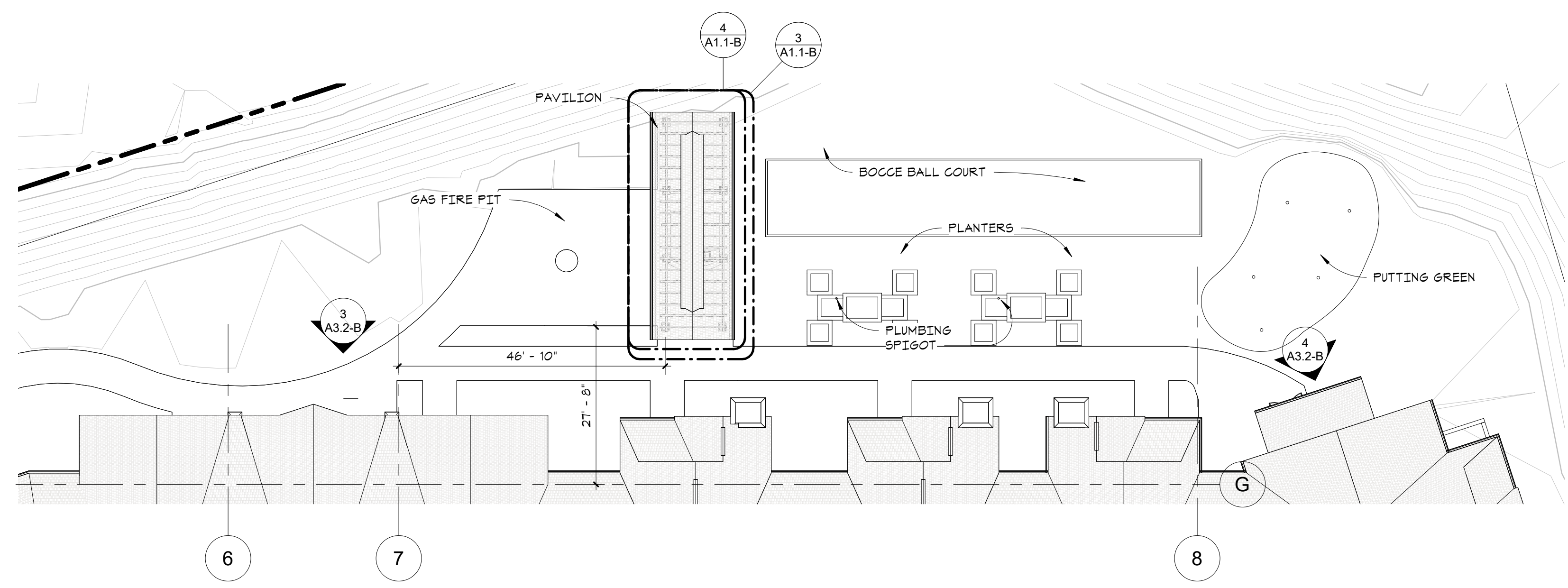
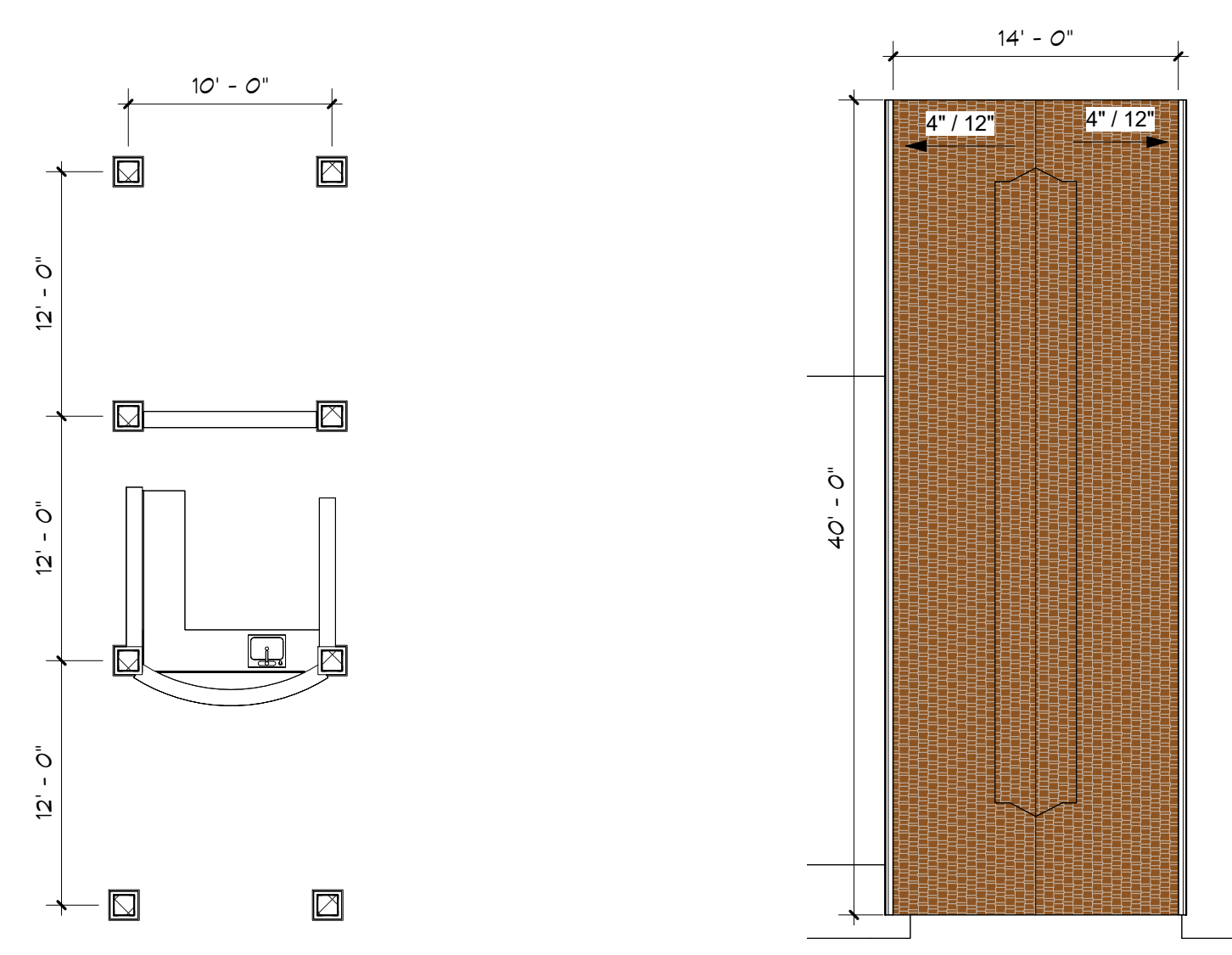
1000 university ave. w. suite 130
st. paul, minnesota 55104
612-252-4820

I hereby certify that this document was prepared by me or under my direct supervision and that I am a duly licensed architect under the laws of the State of Washington

Dawn Wiczorek
Typed or Printed Name

11192 X
License # Date

- GENERAL PLAN NOTES**
1. TYPICAL INTERIOR DIMENSIONS FOR SINGLE STUD WALLS ARE TO FACE OF STUD. FOR MULTIPLE STUD WALLS DIMENSIONS ARE TO CENTER OF WALL ASSEMBLY. FURRING DIMENSIONS ARE TO FINISH, AND MASONRY DIMENSIONS ARE TO FACE OF WALL.
 2. EXTERIOR DIMENSIONS ARE TO OUTSIDE FACE OF CMU FOUNDATION & SHEATHING AND TO CENTERLINE OF WINDOWS.
 3. PROVIDE ACCESS PANELS WHEREVER REQUIRED FOR ACCESS TO MECHANICAL AND/OR ELECTRICAL ITEMS. VERIFY WITH MECHANICAL AND ELECTRICAL, AND COORDINATE EXACT LOCATION WITH ARCHITECT IF LOCATED IN FINISHED SPACES.
 4. PRIME AND PAINT ALL EXPOSED EXTERIOR METALS, ETC. WHICH ARE NOT PREFINISHED, SUCH AS, BUT NOT LIMITED TO: STEEL LINTELS, BOLLARDS, ETC.
 5. ALL STRUCTURAL STEEL TO BE (1) HOUR FIRE RATED. SEE STRUCTURAL PLANS FOR LOCATIONS AND QUANTITY OF STEEL BEAMS AND COLUMNS.
 6. SEE SHEET A10.1 FOR WALL TYPES.
 7. SEE A10 SERIES SHEETS FOR TYPICAL INTERIOR DETAILS.
 8. PAINT ALL ITEMS PENETRATING THE SLOPED ROOF TO MATCH ROOFING SUCH AS BUT NOT LIMITED TO VENT PIPES, FAN COVERS, ETC.
 9. PROVIDE AN AUTOMATIC DRY SPRINKLER SYSTEM IN THE ATTIC INSTEAD OF DRAFTSTOPPING.
 10. SEE SHEETS A2 SERIES SHEETS FOR ENLARGED UNIT PLANS AND FLOOR PLANS.
 11. AT RESIDENTIAL FLOORS, PROVIDE HANDRAIL ON ONE SIDE OF CORRIDOR. PROVIDE BLOCKING FOR FUTURE RAILING AT OPPOSITE SIDE.
 12. SEE INTERIOR DESIGNER'S FINISH SCHEDULE FOR LOCATION OF PICTURE & CHAIR RAILS.
 13. FOR TYPICAL AIR BARRIER INSTALLATION - 15 - 19/A6.2
 14. SEE SHEET A10.4 FOR TYPICAL FIRESTOPPING PENETRATION DETAILS.



WESLEY BRADLEY PARK 2
EAST BROWNSTONE
707 39TH AVENUE SE
PUYALLUP, WA 98374

LAND USE & MX-DRO REVIEW
SUBMITAL #2
1/13/23

ORIGINAL ISSUE:

REVISIONS

No.	Description	Date

2108
PROJECT NUMBER

JDK Checker
DRAWN BY CHECKED BY

WESLEY BRADLEY PARK 2
EAST BROWNSTONE

FIRST LEVEL OVERALL
PLAN - BROWNSTONE B

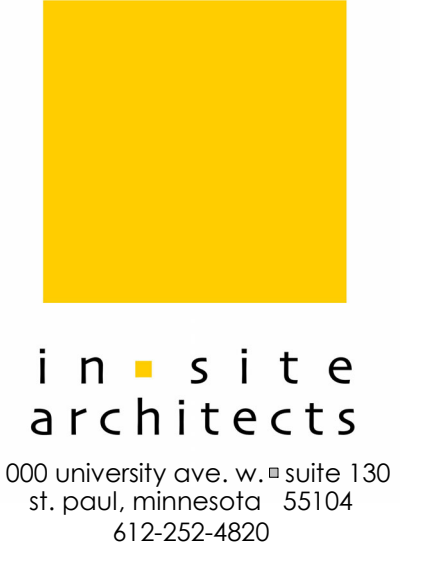
A1.1-B

ROOM FINISH SCHEDULE NOTES			
1. CROWN MOULDING			
2. PICTURE RAIL - TOP @ 6" - 0" AFF.			
SEE INTERIOR DESIGNER'S FINISH SCHEDULE FOR LOCATION OF PICTURE & CHAIR RAILS			
ROOM FINISH ABBREVIATIONS			
ACT	ACROUSTICAL CEILING TILE	INT	INTERIOR
AFB	ABOVE FINISHED FLOOR	LVT	LUXURY VINYL TILE
BD	BOARD	MFR	MANUFACTURER
CM	CULTURED MARBLE	MEMB	MEMBRANE
CPT	CARPET	MTL	METAL
CT	CERAMIC TILE	NIC	NOT IN CONTRACT
CONC	CONCRETE	PT	PAINT
CMU	CONCRETE MASONRY UNIT	PTD	PAINTED
DIM	DIMENSION	PNL	PANEL
DR	DOOR	PLAM	PLASTIC LAMINATE
EPT	EPOXY PAINT	RCP	REFLECTED CEILING PLAN
EXIST	EXISTING	RM	ROOM
FRP	FIBER REINFORCED PLASTIC	SS	SEALED CONCRETE
FIN	FINISH	SS	SOLID SURFACE
FF	FINISH FLOOR	SST	STAINLESS STEEL
FFE	FURNITURE FIXTURES & EQUIPMENT	STN	STONE
GC	GENERAL CONTRACTOR	TV	TELEVISION
GYP	GYPSONUM	VB	VINYL BASE
HT	HEIGHT	WC	WALL COVERING
HM	HOLLOW METAL	WD	WOOD

DOOR AND WINDOW NOTES			
1. FIRE RATING LABELS ARE SHOWN IN MINUTES UNO.			
2. UNDERCUT AT ALL INTERIOR DOORS UNO.			
3. DOOR HARDWARE TO BE CENTERED ON RAIL OF PANEL DOORS.			
4. SEE A11.1 FOR DOOR TYPES			
5. REFER TO ELEVATIONS AND PLANS FOR WINDOWS LOCATIONS REQUIRING SAFETY GLAZING TO MEET IBC 2406.			
GLAZING TYPES			
IN 1" INSULATED NON-TEMPERED			
IT 1" INSULATED TEMPERED			
P 1/4" PLATE GLASS			
T 1/4" TEMPERED			
F 1/4" FROSTED GLASS			
W 1/4" WIRED GLASS			
DOOR AND WINDOW ABBREVIATIONS			
ALUM	ALUMINUM	NL	NARROW LITE
AP	FLUSH W/ APPLIED MLDG	OC	OVERHEAD COILING
CL	CHAIN LINK	OH	OVERHEAD SEGMENTAL
DW	DRYWALL	PLAM	PLASTIC LAMINATE
F	FLUSH	PREFIN	PRE-FINISHED
FG	FULL GLASS	PT	PAINT
FRP	FIBERGLASS	RP	RAISED PANEL
REINFORCED	PLASTIC	SCR	SOLID CORE HARDBOARD
	HOLLOW CORE HARDBOARD	SCW	SOLID CORE WOOD
HCHB	HOLLOW CORE WOOD	ST	STAIN
HCW	HOLLOW CORE WOOD	STL	STEEL
HM	HOLLOW METAL	TR	TRAFFIC DOOR (SOLID CORE)
HMKD	HOLLOW METAL KNOCKED DOWN	CLWD	CLAD WOOD
IF	INSULATED FIBERGLASS	WD	WOOD
IM	INSULATED METAL		

1-DOOR SCHEDULE - FIRST FLOOR																			
REV	Door Number	To Room Name	DOOR		FRAME				GLASS				Mag Hold	Comments					
			Width	HT	THK	TYPE	MATL	FIN	Type	MATL	FIN	HDWR			Label	Door	Sidelite	Auto-Op	FOB
LEVEL 1 - EAST																			
643	OUTDOOR SHED		6'-0"	7'-0"	1 3/4"	F	HM	PT	F1	HM	PREFIN								
1030	LOBBY		6'-0"	7'-0"	1 3/4"	FG	AL	AN	F2	AL	AN		IT		Yes				
1036E	VESTIBULE		6'-0"	7'-0"	1 3/4"	FG	AL	AN	F2	AL	AN		IT		Yes				
1031A			3'-0"	6'-8"	1 3/4"	RP	SCHB	PT	DW	DW	PREFIN								
1033	STOR		3'-0"	6'-8"	1 3/4"	RP	SCHB	PT	DW	DW	PREFIN								
1034	TRASH		3'-0"	6'-8"	1 3/4"	RP	SCHB	PT	DW	DW	PREFIN								
1035	LOBBY		3'-0"	6'-8"	1 3/4"	RP	SCHB	PT	DW	DW	PREFIN								
1036E	GAME ROOM		6'-0"	7'-0"	1 3/4"	FG	AL	AN	F2	AL	AN		IT						
1036E	COMMONS		6'-0"	7'-0"	1 3/4"	FG	AL	AN	F2	AL	AN		IT	Yes	Yes				
1037	TOILET		3'-0"	6'-8"	1 3/4"	RP	SCHB	PT	DW	DW	PREFIN								
1039E	CORR S1		3'-0"	7'-0"	1 3/4"	FG	AL	AN	F1	AL	AN		IT		Yes	Yes			
1040	GAME ROOM		3'-0"	6'-8"	1 3/4"	RP	SCHB	PT	DW	DW	PREFIN								
1041	GAME ROOM		3'-0"	6'-8"	1 3/4"	RP	SCHB	PT	DW	DW	PREFIN								
1042	GAME ROOM		3'-0"	6'-8"	1 3/4"	FG	WD	ST	F1	HM	PT		T		Yes				
1042-1E	GAME ROOM		3'-0"	6'-8"	1 3/4"	FG	AL	AN	F1	AL	AN		T						
1042-2E	GAME ROOM		6'-0"	7'-0"	1 3/4"	FG	AL	AN	F2	AL	AN		IT						
1042-3E	GAME ROOM		3'-0"	6'-8"	1 3/4"	FG	AL	AN	F1	AL	AN		T						
C-S1W	OUTDOOR SHED		6'-0"	7'-0"	1 3/4"	F	HM	PT	F1	HM	PREFIN								
ST-A1	STAIR A1		3'-0"	6'-8"	1 3/4"	RP	SCHB	PT	DW	DW	PREFIN								
ST-A1E	STAIR A1		3'-0"	7'-0"	1 3/4"	FG	AL	AN	F1	AL	AN		IT		Yes				
ST-B1	STAIR B1		3'-0"	6'-8"	1 3/4"	RP	SCHB	PT	DW	DW	PREFIN								
ST-B1E	STAIR B1		3'-0"	7'-0"	1 3/4"	FG	AL	AN	F1	AL	AN		IT		Yes				

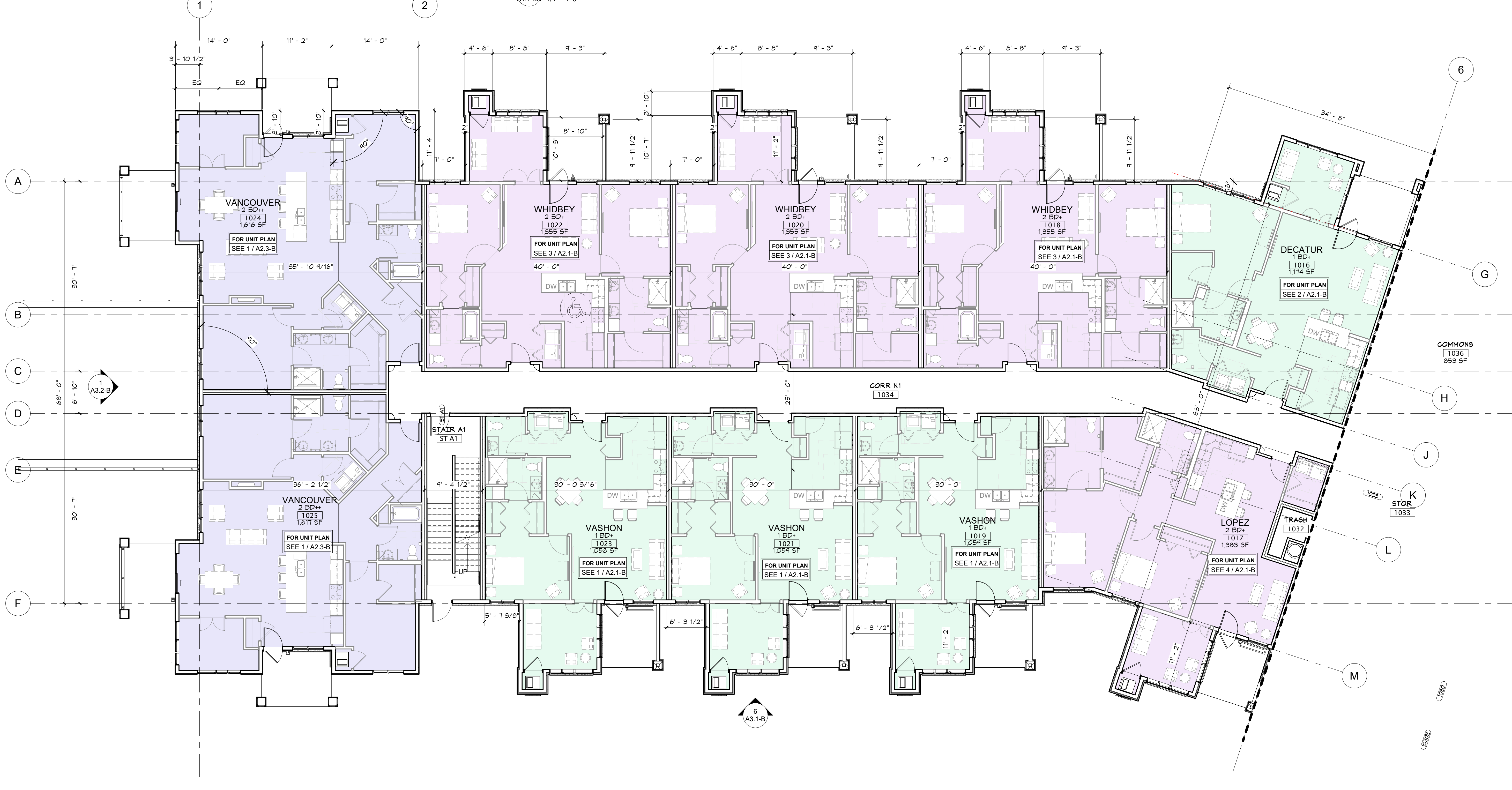
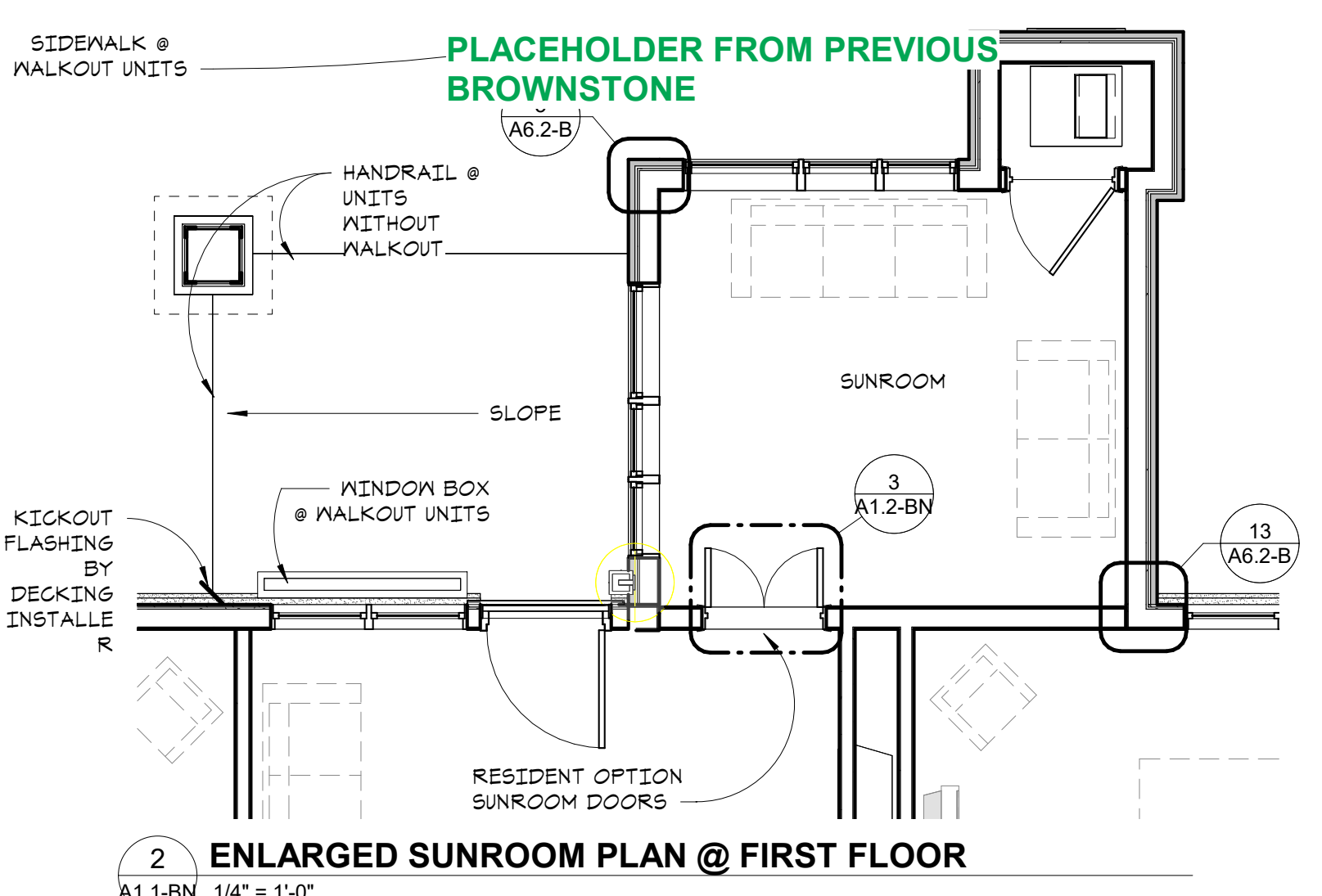
- GENERAL PLAN NOTES**
- TYPICAL INTERIOR DIMENSIONS FOR SINGLE STUD WALLS ARE TO FACE OF STUD. FOR MULTIPLE STUD WALLS DIMENSIONS ARE TO CENTER OF WALL ASSEMBLY. FURRING DIMENSIONS ARE TO FINISH. AND MASONRY DIMENSIONS ARE TO FACE OF WALL.
 - EXTERIOR DIMENSIONS ARE TO OUTSIDE FACE OF CMU FOUNDATION & SHEATHING AND TO CENTERLINE OF WINDOWS.
 - PROVIDE ACCESS PANELS WHEREVER REQUIRED FOR ACCESS TO MECHANICAL AND/OR ELECTRICAL ITEMS. VERIFY WITH MECHANICAL AND ELECTRICAL. AND COORDINATE EXACT LOCATION WITH ARCHITECT IF LOCATED IN FINISHED SPACES.
 - PRIME AND PAINT ALL EXPOSED EXTERIOR METALS, ETC. WHICH ARE NOT PREFINISHED, SUCH AS, BUT NOT LIMITED TO: STEEL LINTELS, BOLLARDS, ETC.
 - ALL STRUCTURAL STEEL TO BE (1) HOUR FIRE RATED. SEE STRUCTURAL PLANS FOR LOCATIONS AND QUANTITY OF STEEL BEAMS AND COLUMNS.
 - SEE SHEET A10.1 FOR WALL TYPES.
 - SEE A10 SERIES SHEETS FOR TYPICAL INTERIOR DETAILS.
 - PAINT ALL ITEMS PENETRATING THE SLOPED ROOF TO MATCH ROOFING SUCH AS BUT NOT LIMITED TO VENT PIPES, FAN COVERS, ETC.
 - PROVIDE AN AUTOMATIC DRY SPRINKLER SYSTEM IN THE ATTIC INSTEAD OF DRAFTSTOPPING.
 - SEE SHEETS A2 SERIES SHEETS FOR ENLARGED UNIT PLANS AND FLOOR PLANS.
 - AT RESIDENTIAL FLOORS, PROVIDE HANDRAIL ON ONE SIDE OF CORRIDOR. PROVIDE BLOCKING FOR FUTURE RAILING AT OPPOSITE SIDE.
 - SEE INTERIOR DESIGNER'S FINISH SCHEDULE FOR LOCATION OF PICTURE & CHAIR RAILS.
 - FOR TYPICAL AIR BARRIER INSTALLATION - 15 - 19/A6.2
 - SEE SHEET A10.4 FOR TYPICAL FIRESTOPPING PENETRATION DETAILS.



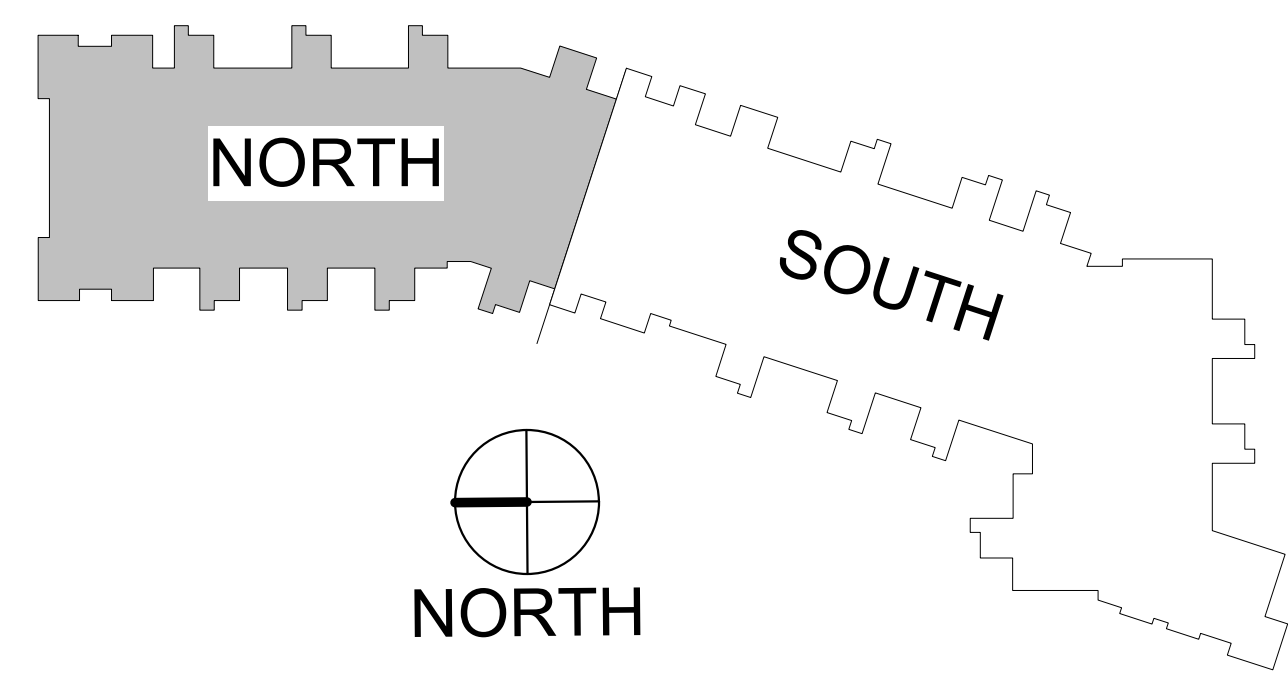
1000 university ave. w. suite 130
st. paul, minnesota 55104
612-252-4820

I hereby certify that this document was prepared by me or under my direct supervision and that I am a duly licensed architect under the laws of the State of Washington

Dawn Wiecezorek
Typed or Printed Name
11192 X
License # Date



1 LEVEL 1 - EAST - NORTH
A1.1-BN 1/8" = 1'-0"



WESLEY BRADLEY PARK 2
EAST BROWNSTONE
707 39TH AVENUE SE
PUYALLUP, WA 98374

LAND USE & MX-DRO REVIEW
SUBMITTAL #2
1/13/23

ORIGINAL ISSUE:
REVISIONS

No.	Description	Date

2108
PROJECT NUMBER

jdk Checker
DRAWN BY CHECKED BY

WESLEY BRADLEY PARK 2
EAST BROWNSTONE

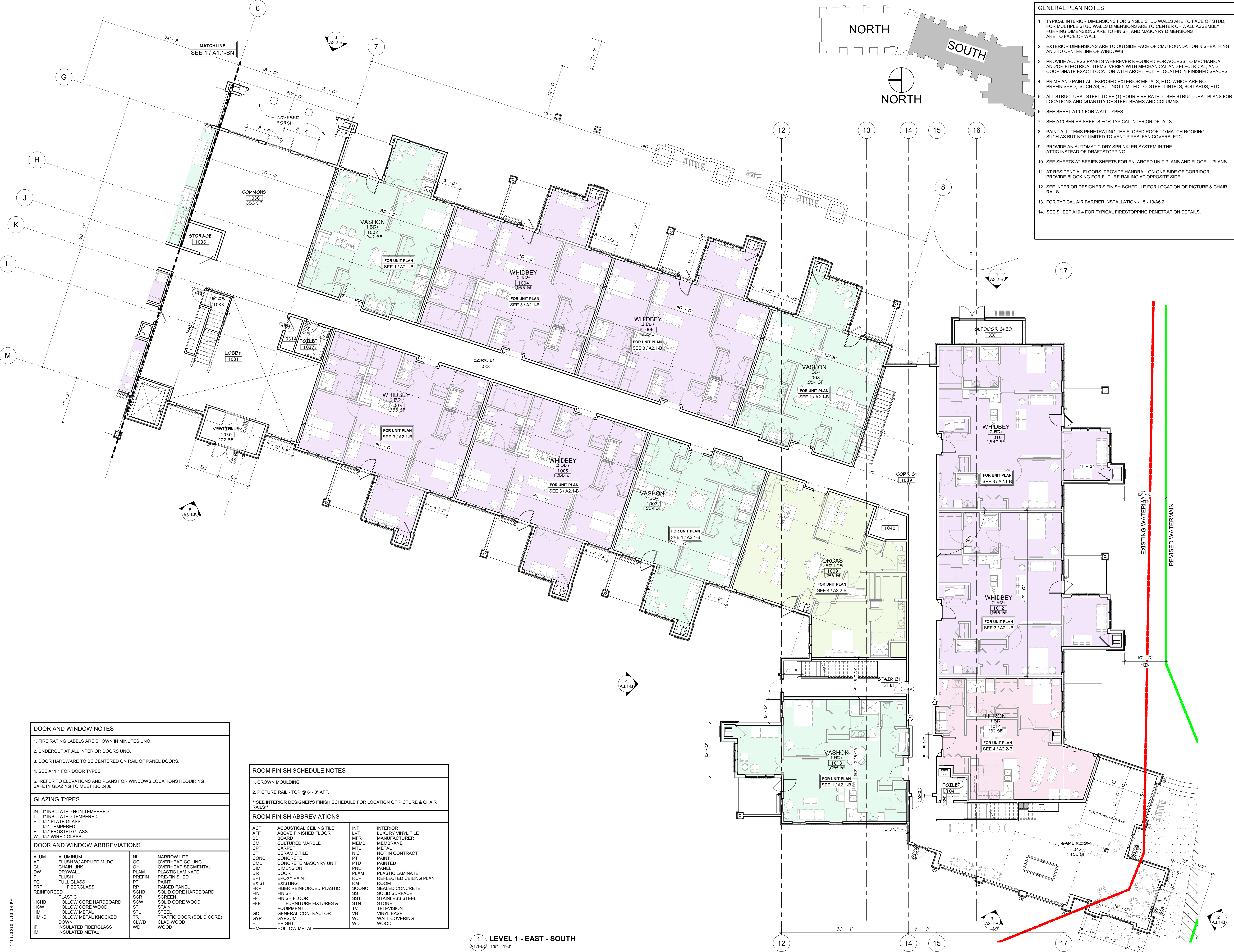
FIRST LEVEL BROWNSTONE
B PLAN - NORTH

A1.1-BN

I hereby certify that this document was prepared by me or under my direct supervision and that I am a duly licensed architect under the laws of the State of Washington

Dawn Wiczorek
 Type or Printed Name
 11192 X
 License # Date

- GENERAL PLAN NOTES**
- TYPICAL INTERIOR DIMENSIONS FOR SINGLE STUD WALLS ARE TO FACE OF STUD. FOR MULTIPLE STUD WALLS DIMENSIONS ARE TO CENTER OF WALL ASSEMBLY. FURRING DIMENSIONS ARE TO FINISH, AND MASONRY DIMENSIONS ARE TO FACE OF WALL.
 - EXTERIOR DIMENSIONS ARE TO OUTSIDE FACE OF CMU FOUNDATION & SHEATHING AND TO CENTERLINE OF WINDOWS.
 - PROVIDE ACCESS PANELS WHEREVER REQUIRED FOR ACCESS TO MECHANICAL AND/OR ELECTRICAL ITEMS. VERIFY WITH MECHANICAL AND ELECTRICAL AND COORDINATE EXACT LOCATION WITH ARCHITECT IF LOCATED IN FINISHED SPACES.
 - PRIME AND PAINT ALL EXPOSED EXTERIOR METALS, ETC. WHICH ARE NOT PREFINISHED, SUCH AS, BUT NOT LIMITED TO: STEEL LINTELS, BOLLARDS, ETC.
 - ALL STRUCTURAL STEEL TO BE (1) HOUR FIRE RATED. SEE STRUCTURAL PLANS FOR LOCATIONS AND QUANTITY OF STEEL BEAMS AND COLUMNS.
 - SEE SHEET A10.1 FOR WALL TYPES.
 - SEE A10 SERIES SHEETS FOR TYPICAL INTERIOR DETAILS.
 - PAINT ALL ITEMS PENETRATING THE SLOPED ROOF TO MATCH ROOFING SUCH AS BUT NOT LIMITED TO VENT PIPES, FAN COVERS, ETC.
 - PROVIDE AN AUTOMATIC DRY SPRINKLER SYSTEM IN THE ATTIC INSTEAD OF DRAFTSTOPPING.
 - SEE SHEETS A2 SERIES SHEETS FOR ENLARGED UNIT PLANS AND FLOOR PLANS.
 - AT RESIDENTIAL FLOORS, PROVIDE HANDRAIL ON ONE SIDE OF CORRIDOR. PROVIDE BLOCKING FOR FUTURE RAILING AT OPPOSITE SIDE.
 - SEE INTERIOR DESIGNER'S FINISH SCHEDULE FOR LOCATION OF PICTURE & CHAIR RAILS.
 - FOR TYPICAL AIR BARRIER INSTALLATION - 15 - 19/A6.2
 - SEE SHEET A10.4 FOR TYPICAL FIRESTOPPING PENETRATION DETAILS.



DOOR AND WINDOW NOTES

- FIRE RATING LABELS ARE SHOWN IN MINUTES UNO.
- UNDERCUT AT ALL INTERIOR DOORS UNO.
- DOOR HARDWARE TO BE CENTERED ON RAIL OF PANEL DOORS.
- SEE A11.1 FOR DOOR TYPES
- REFER TO ELEVATIONS AND PLANS FOR WINDOWS LOCATIONS REQUIRING SAFETY GLAZING TO MEET IBC 2406.

GLAZING TYPES

IN 1" INSULATED NON-TEMPERED
 IT 1" INSULATED TEMPERED
 P 1/4" PLATE GLASS
 T 1/4" TEMPERED
 F 1/4" FROSTED GLASS
 W 1/4" WIRED GLASS

DOOR AND WINDOW ABBREVIATIONS

ALUM	ALUMINUM	NL	NARROW LITE
AP	FLUSH W/ APPLIED MLDG	OC	OVERHEAD COILING
CL	CHAIN LINK	OH	OVERHEAD SEGMENTAL
DW	DRYWALL	PLAM	PLASTIC LAMINATE
F	FLUSH	PREFIN	PRE-FINISHED
FG	FULL GLASS	PT	PAINT
FRP	FIBERGLASS	RP	RAISED PANEL
FRP	REINFORCED	SCHB	SOLID CORE HARDBOARD
HCHB	HOLLOW CORE HARDBOARD	SCR	SCREEN
HCW	HOLLOW CORE WOOD	SCW	SOLID CORE WOOD
HM	HOLLOW METAL	ST	STAIN
HMKD	HOLLOW METAL KNOCKED DOWN	STL	STEEL
IM	INSULATED FIBERGLASS INSULATED METAL	TR	TRAFFIC DOOR (SOLID CORE)
		CLWD	CLAD WOOD
		WD	WOOD

ROOM FINISH SCHEDULE NOTES

- CROWN MOULDING
- PICTURE RAIL - TOP @ 6" - 0" AFF.
- **SEE INTERIOR DESIGNER'S FINISH SCHEDULE FOR LOCATION OF PICTURE & CHAIR RAILS**

ROOM FINISH ABBREVIATIONS

ACT	ACOUSTICAL CEILING TILE	INT	INTERIOR
AFF	ABOVE FINISHED FLOOR	LVT	LUXURY VINYL TILE
BD	BOARD	MFR	MANUFACTURER
CM	CULTURED MARBLE	MEMB	MEMBRANE
CPT	CARPET	MTL	METAL
CT	CERAMIC TILE	NIC	NOT IN CONTRACT
CONC	CONCRETE	PT	PAINT
CMU	CONCRETE MASONRY UNIT	PTD	PAINTED
DM	DIMENSION	PNL	PANEL
DR	DOOR	PLAM	PLASTIC LAMINATE
EPT	EPOXY PAINT	RCP	REFLECTED CEILING PLAN
EXIST	EXISTING	RM	ROOM
FRP	FIBER REINFORCED PLASTIC	SCONC	SEALED CONCRETE
FIN	FINISH	SS	SOLID SURFACE
FFE	FINISH FLOOR	SST	STAINLESS STEEL
FFN	FURNITURE FIXTURES & EQUIPMENT	STN	STONE
GC	GENERAL CONTRACTOR	TV	TELEVISION
GYP	GYPSONUM	VB	VINYL BASE
HT	HEIGHT	WC	WALL COVERING
HM	HOLLOW METAL	WD	WOOD

1 LEVEL 1 - EAST - SOUTH
 A1.1-BS 1/8" = 1'-0"

WESLEY BRADLEY PARK 2
EAST BROWNSTONE
 707 39TH AVENUE SE
 PUYALLUP, WA 98374

LAND USE & MX-DRO REVIEW
SUBMITTAL #2
 1/13/23

ORIGINAL ISSUE:
 REVISIONS
 No. Description Date

2108
 PROJECT NUMBER
 jdk _____ Checker
 DRAWN BY CHECKED BY
 WESLEY BRADLEY PARK 2
 EAST BROWNSTONE

FIRST LEVEL BROWNSTONE
 B PLAN - SOUTH
A1.1-BS

1/13/2023 5:18:34 PM



insite
architects

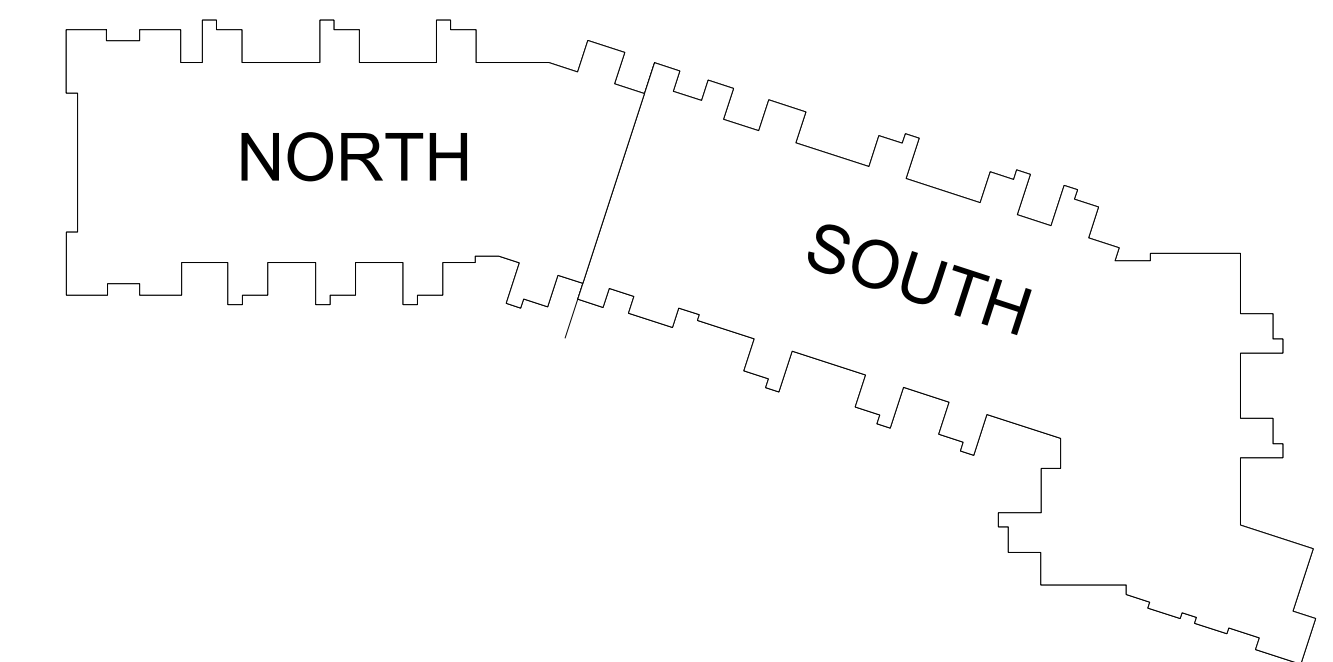
1000 university ave. w. suite 130
st. paul, minnesota 55104
612-252-4820

I hereby certify that this document was prepared by me or under my direct supervision and that I am a duly licensed architect under the laws of the State of Washington

Dawn Wiczorek
Typed or Printed Name

11192 X
License # Date

- GENERAL PLAN NOTES**
1. TYPICAL INTERIOR DIMENSIONS FOR SINGLE STUD WALLS ARE TO FACE OF STUD. FOR MULTIPLE STUD WALLS DIMENSIONS ARE TO CENTER OF WALL ASSEMBLY. FLOORING DIMENSIONS ARE TO FINISH, AND MASONRY DIMENSIONS ARE TO FACE OF WALL.
 2. EXTERIOR DIMENSIONS ARE TO OUTSIDE FACE OF CMU FOUNDATION & SHEATHING AND TO CENTERLINE OF WINDOWS.
 3. PROVIDE ACCESS PANELS WHEREVER REQUIRED FOR ACCESS TO MECHANICAL AND/OR ELECTRICAL ITEMS. VERIFY WITH MECHANICAL AND ELECTRICAL, AND COORDINATE EXACT LOCATION WITH ARCHITECT IF LOCATED IN FINISHED SPACES.
 4. PRIME AND PAINT ALL EXPOSED EXTERIOR METALS, ETC. WHICH ARE NOT PREFINISHED, SUCH AS, BUT NOT LIMITED TO, STEEL LINTELS, BOLLARDS, ETC.
 5. ALL STRUCTURAL STEEL TO BE (1) HOUR FIRE RATED. SEE STRUCTURAL PLANS FOR LOCATIONS AND QUANTITY OF STEEL BEAMS AND COLUMNS.
 6. SEE SHEET A10.1 FOR WALL TYPES.
 7. SEE A10 SERIES SHEETS FOR TYPICAL INTERIOR DETAILS.
 8. PAINT ALL ITEMS PENETRATING THE SLOPED ROOF TO MATCH ROOFING SUCH AS BUT NOT LIMITED TO, VENT PIPES, FAN COVERS, ETC.
 9. PROVIDE AN AUTOMATIC DRY SPRINKLER SYSTEM IN THE ATTIC INSTEAD OF DRAFTSTOPPING.
 10. SEE SHEETS A2 SERIES SHEETS FOR ENLARGED UNIT PLANS AND FLOOR PLANS.
 11. AT RESIDENTIAL FLOORS, PROVIDE HANDRAIL ON ONE SIDE OF CORRIDOR. PROVIDE BLOCKING FOR FUTURE RAILING AT OPPOSITE SIDE.
 12. SEE INTERIOR DESIGNER'S FINISH SCHEDULE FOR LOCATION OF PICTURE & CHAIR RAILS.
 13. FOR TYPICAL AIR BARRIER INSTALLATION - 15 - 19/A6.2
 14. SEE SHEET A10.4 FOR TYPICAL FIRESTOPPING PENETRATION DETAILS.



UNIT TYPE LEGEND

■	BROWNSTONE - 1 BD+
■	BROWNSTONE - 2 BD+
■	COMMONS

1 LEVEL 2 - OVERALL BSTONE EAST
A1.2-B / 1/16" = 1'-0"

WESLEY BRADLEY PARK 2
EAST BROWNSTONE
707 39TH AVENUE SE
PUYALLUP, WA 98374

LAND USE & MX-DRO REVIEW
SUBMITTAL #2
1/13/23

ORIGINAL ISSUE:

REVISIONS

No.	Description	Date

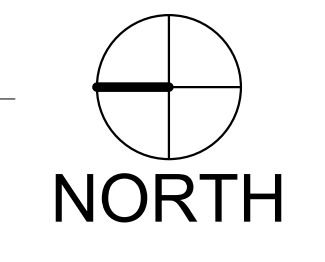
2108
PROJECT NUMBER

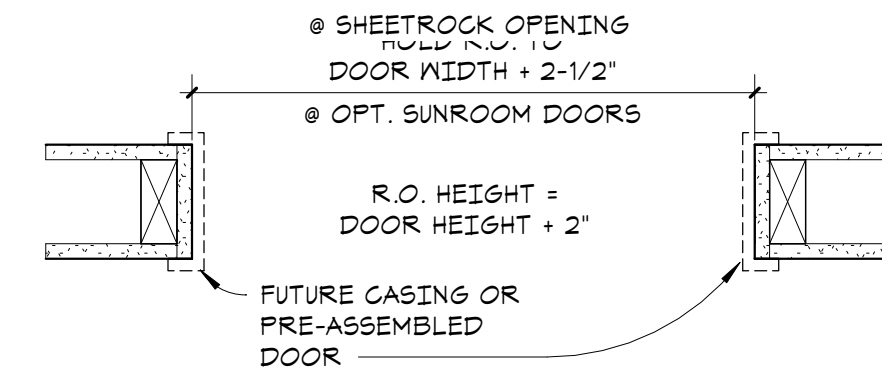
JDK Checker
DRAWN BY CHECKED BY

WESLEY BRADLEY PARK 2
EAST BROWNSTONE

SECOND LEVEL OVERALL
FLOOR PLANS

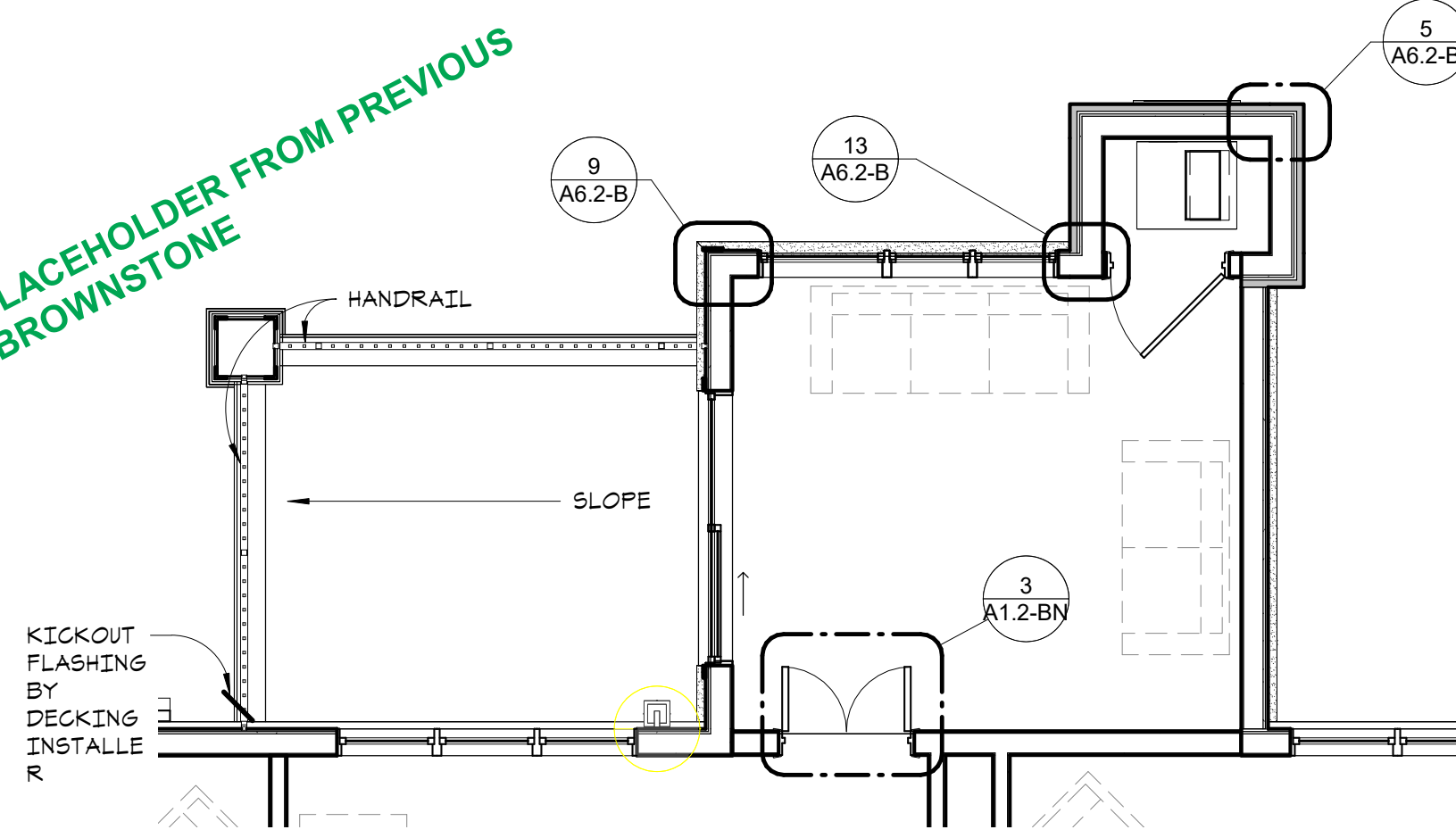
A1.2-B





3 OPTIONAL SUNROOM DOORS
A1.2-BN 1/12" = 1'-0"

PLACEHOLDER FROM PREVIOUS
BROWNSTONE



2 ENLARGED SUNROOM PLAN @ SECOND FLOOR
A1.2-BN 1/4" = 1'-0"

2-DOOR SCHEDULE - SECOND FLOOR														
Door Number	To Room Name	DOOR				FRAME				GLASS				Comments
		Width	HT	THK	MATL	FIN	Type	MATL	FIN	HDWR	Label	Door	Sidelite	
LEVEL 2 - EAST														
2032	CORR E2	3'-0"	6'-8"	1 3/4"										45
2033	DATA?	3'-0"	6'-8"	1 3/4"	RP	SCHB	PT	DW	DW	PREFIN				
2035	CORR S2	3'-0"	6'-8"	1 3/4"	RP	SCHB	PT	DW	DW	PREFIN				
2036	CLUBROOM	3'-0"	6'-8"	1 3/4"	FG	WD	ST	F1	HM	PT				T
2037	CLUBROOM	3'-0"	6'-8"	1 3/4"	RP	SCHB	PT	DW	DW	PREFIN				
ST. B. 2	CORR S2	3'-0"	6'-8"	1 3/4"	RP	SCHB	PT	DW	DW	PREFIN				

ROOM FINISH SCHEDULE NOTES

- CROWN MOULDING
- PICTURE RAIL - TOP @ 6' - 0" AFF.
- **SEE INTERIOR DESIGNER'S FINISH SCHEDULE FOR LOCATION OF PICTURE & CHAIR RAILS**

ROOM FINISH ABBREVIATIONS

ACT	ACOUSTICAL CEILING TILE	INT	INTERIOR
AFF	ABOVE FINISHED FLOOR	LVT	LUXURY VINYL TILE
BD	BOARD	MFR	MANUFACTURER
CM	CULTURED MARBLE	MEMB	MEMBRANE
CPT	CARPET	MTL	METAL
CT	CERAMIC TILE	NIC	NOT IN CONTRACT
CONC	CONCRETE	PT	PAINT
CMU	CONCRETE MASONRY UNIT	PTD	PAINTED
DIM	DIMENSION	PNL	PANEL
DR	DOOR	PLAM	PLASTIC LAMINATE
EPT	EPOXY PAINT	RCP	REFLECTED CEILING PLAN
EXIST	EXISTING	RM	ROOM
FRP	FIBER REINFORCED PLASTIC	SCONC	SEALED CONCRETE
FIN	FINISH	SS	SOLID SURFACE
FF	FINISH FLOOR	SST	STAINLESS STEEL
FFE	FURNITURE FIXTURES & EQUIPMENT	STN	STONE
GC	GENERAL CONTRACTOR	TV	TELEVISION
GYP	GYPSTRUM	VB	VINYL BASE
HT	HEIGHT	WC	WALL COVERING
HM	HOLLOW METAL	WD	WOOD

DOOR AND WINDOW NOTES

- FIRE RATING LABELS ARE SHOWN IN MINUTES UNO.
- UNDERCUT AT ALL INTERIOR DOORS UNO.
- DOOR HARDWARE TO BE CENTERED ON RAIL OF PANEL DOORS.
- SEE A11.1 FOR DOOR TYPES
- REFER TO ELEVATIONS AND PLANS FOR WINDOWS LOCATIONS REQUIRING SAFETY GLAZING TO MEET IBC 2406.

GLAZING TYPES

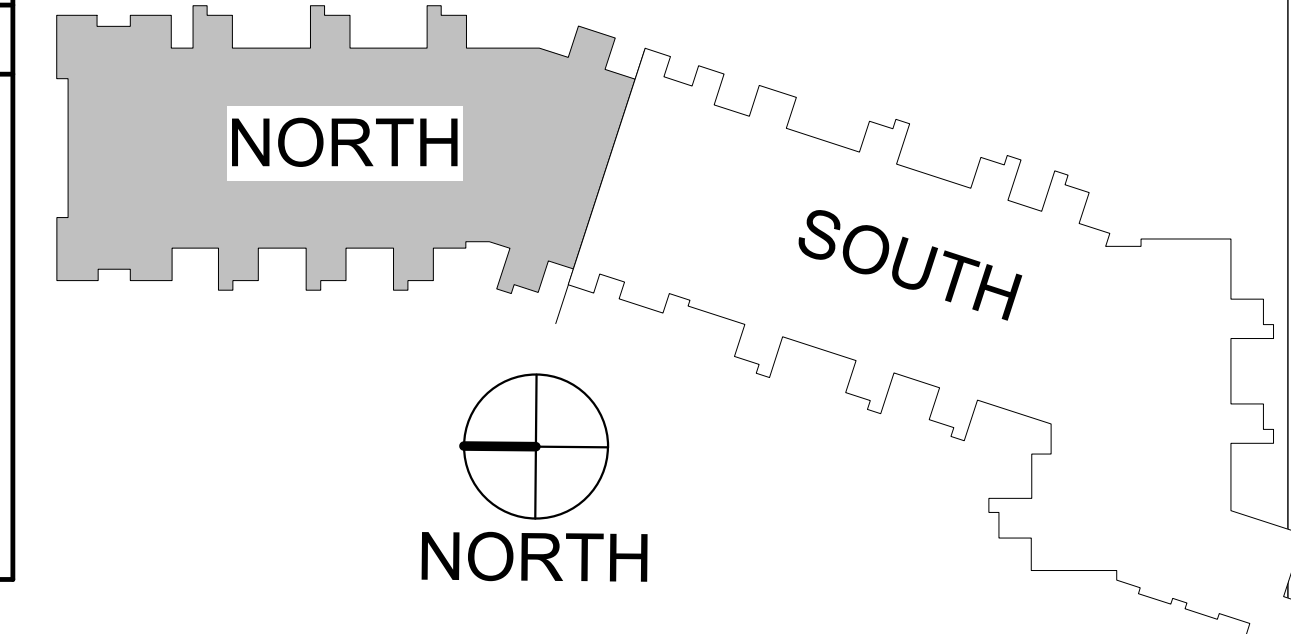
- IN 1" INSULATED NON-TEMPERED
- IT 1" INSULATED TEMPERED
- P 1/4" PLATE GLASS
- T 1/4" TEMPERED
- F 1/4" FROSTED GLASS
- W 1/4" WIRED GLASS

DOOR AND WINDOW ABBREVIATIONS

ALUM	ALUMINUM	NL	NARROW LITE
AP	FLUSH W/ APPLIED MLDG	OC	OVERHEAD COILING
CL	CHAIN LINK	OH	OVERHEAD SEGMENTAL
DW	DRYWALL	PLAM	PLASTIC LAMINATE
F	FLUSH	PREFIN	PRE-FINISHED
FG	FULL GLASS	PT	PAINT
FRP	FIBERGLASS	RP	RAISED PANEL
REINFORCED	PLASTIC	SCB	SOLID CORE HARDBOARD
HCHB	HOLLOW CORE HARDBOARD	SCR	SCREEN
HCW	HOLLOW CORE WOOD	SCW	SOLID CORE WOOD
HM	HOLLOW METAL	ST	STAIN
HMKD	HOLLOW METAL KNOCKED DOWN	STL	STEEL
IF	INSULATED FIBERGLASS	TR	TRAFFIC DOOR (SOLID CORE)
IM	INSULATED METAL	CLWD	CLAD WOOD
		WD	WOOD

GENERAL PLAN NOTES

- TYPICAL INTERIOR DIMENSIONS FOR SINGLE STUD WALLS ARE TO FACE OF STUD. FOR MULTIPLE STUD WALLS DIMENSIONS ARE TO CENTER OF WALL ASSEMBLY. FURRING DIMENSIONS ARE TO FINISH, AND MASONRY DIMENSIONS ARE TO FACE OF WALL.
- EXTERIOR DIMENSIONS ARE TO OUTSIDE FACE OF CMU FOUNDATION & SHEATHING AND TO CENTERLINE OF WINDOWS.
- PROVIDE ACCESS PANELS WHEREVER REQUIRED FOR ACCESS TO MECHANICAL AND/OR ELECTRICAL ITEMS. VERIFY WITH MECHANICAL AND ELECTRICAL, AND COORDINATE EXACT LOCATION WITH ARCHITECT IF LOCATED IN FINISHED SPACES.
- PRIME AND PAINT ALL EXPOSED EXTERIOR METALS, ETC. WHICH ARE NOT PREFINISHED, SUCH AS, BUT NOT LIMITED TO: STEEL LINTELS, BOLLARDS, ETC.
- ALL STRUCTURAL STEEL TO BE (1) HOUR FIRE RATED. SEE STRUCTURAL PLANS FOR LOCATIONS AND QUANTITY OF STEEL BEAMS AND COLUMNS.
- SEE SHEET A10.1 FOR WALL TYPES.
- SEE A10 SERIES SHEETS FOR TYPICAL INTERIOR DETAILS.
- PAINT ALL ITEMS PENETRATING THE SLOPED ROOF TO MATCH ROOFING SUCH AS BUT NOT LIMITED TO VENT PIPES, FAN COVERS, ETC.
- PROVIDE AN AUTOMATIC DRY SPRINKLER SYSTEM IN THE ATTIC INSTEAD OF DRAFTSTOPPING.
- SEE SHEETS A2 SERIES SHEETS FOR ENLARGED UNIT PLANS AND FLOOR PLANS.
- AT RESIDENTIAL FLOORS, PROVIDE HANDRAIL ON ONE SIDE OF CORRIDOR. PROVIDE BLOCKING FOR FUTURE RAILING AT OPPOSITE SIDE.
- SEE INTERIOR DESIGNER'S FINISH SCHEDULE FOR LOCATION OF PICTURE & CHAIR RAILS.
- FOR TYPICAL AIR BARRIER INSTALLATION - 15 - 19/A6.2
- SEE SHEET A10.4 FOR TYPICAL FIRESTOPPING PENETRATION DETAILS.



1 LEVEL 2 - EAST - NORTH
A1.2-BN 1/8" = 1'-0"



1000 university ave. w. suite 130
st. paul, minnesota 55104
612-252-4820

I hereby certify that this document was prepared by me or under my direct supervision and that I am a duly licensed architect under the laws of the State of Washington

Dawn Wiczorek
Typed or Printed Name
11192 X
License # Date

WESLEY BRADLEY PARK 2
EAST BROWNSTONE
707 39TH AVENUE SE
PUYALLUP, WA 98374

LAND USE & MX-DRO REVIEW
SUBMITTAL #2
1/13/23

ORIGINAL ISSUE:
REVISIONS
No. Description Date

2108
PROJECT NUMBER
Author Checker
DRAWN BY CHECKED BY
WESLEY BRADLEY PARK 2
EAST BROWNSTONE
SECOND LEVEL
BROWNSTONE B PLAN -
NORTH

A1.2-BN

I hereby certify that this document was prepared by me or under my direct supervision and that I am a duly licensed architect under the laws of the State of Washington

Dawn Wieczorek
 Typed or Printed Name
 11192 X
 License # Date

- GENERAL PLAN NOTES**
- TYPICAL INTERIOR DIMENSIONS FOR SINGLE STUD WALLS ARE TO FACE OF STUD. FOR MULTIPLE STUD WALLS DIMENSIONS ARE TO CENTER OF WALL ASSEMBLY. FURRING DIMENSIONS ARE TO FINISH, AND MASONRY DIMENSIONS ARE TO FACE OF WALL.
 - EXTERIOR DIMENSIONS ARE TO OUTSIDE FACE OF CMU FOUNDATION & SHEATHING AND TO CENTERLINE OF WINDOWS.
 - PROVIDE ACCESS PANELS WHEREVER REQUIRED FOR ACCESS TO MECHANICAL AND/OR ELECTRICAL ITEMS. VERIFY WITH MECHANICAL AND ELECTRICAL, AND COORDINATE EXACT LOCATION WITH ARCHITECT IF LOCATED IN FINISHED SPACES.
 - PRIME AND PAINT ALL EXPOSED EXTERIOR METALS, ETC. WHICH ARE NOT PREFINISHED, SUCH AS, BUT NOT LIMITED TO: STEEL LINTELS, BOLLARDS, ETC.
 - ALL STRUCTURAL STEEL TO BE (1) HOUR FIRE RATED. SEE STRUCTURAL PLANS FOR LOCATIONS AND QUANTITY OF STEEL BEAMS AND COLUMNS.
 - SEE SHEET A10.1 FOR WALL TYPES.
 - SEE A10 SERIES SHEETS FOR TYPICAL INTERIOR DETAILS.
 - PAINT ALL ITEMS PENETRATING THE SLOPED ROOF TO MATCH ROOFING SUCH AS BUT NOT LIMITED TO VENT PIPES, FAN COVERS, ETC.
 - PROVIDE AN AUTOMATIC DRY SPRINKLER SYSTEM IN THE ATTIC INSTEAD OF DRAFTSTOPPING.
 - SEE SHEETS A2 SERIES SHEETS FOR ENLARGED UNIT PLANS AND FLOOR PLANS.
 - AT RESIDENTIAL FLOORS, PROVIDE HANDRAIL ON ONE SIDE OF CORRIDOR. PROVIDE BLOCKING FOR FUTURE RAILING AT OPPOSITE SIDE.
 - SEE INTERIOR DESIGNER'S FINISH SCHEDULE FOR LOCATION OF PICTURE & CHAIR RAILS.
 - FOR TYPICAL AIR BARRIER INSTALLATION - 15 - 19/A6.2
 - SEE SHEET A10.4 FOR TYPICAL FIRESTOPPING PENETRATION DETAILS.

**WESLEY BRADLEY PARK 2
 EAST BROWNSTONE
 707 39TH AVENUE SE
 PUYALLUP, WA 98374**

**LAND USE & MX-DRO REVIEW
 SUBMITTAL #2
 1/13/23**

ORIGINAL ISSUE:
 REVISIONS
 No. Description Date

2108
 PROJECT NUMBER
 Author _____ Checker _____
 DRAWN BY _____ CHECKED BY _____
 WESLEY BRADLEY PARK 2
 EAST BROWNSTONE
 SECOND LEVEL
 BROWNSTONE B PLAN - SOUTH

A1.2-BS



DOOR AND WINDOW NOTES

- FIRE RATING LABELS ARE SHOWN IN MINUTES UNO.
- UNDERCUT AT ALL INTERIOR DOORS UNO.
- DOOR HARDWARE TO BE CENTERED ON RAIL OF PANEL DOORS.
- SEE A11.1 FOR DOOR TYPES
- REFER TO ELEVATIONS AND PLANS FOR WINDOWS LOCATIONS REQUIRING SAFETY GLAZING TO MEET IBC 2406.

GLAZING TYPES

IN 1" INSULATED NON-TEMPERED
 IT 1" INSULATED TEMPERED
 P 1/4" PLATE GLASS
 T 1/4" TEMPERED
 F 1/4" FROSTED GLASS
 W 1/4" WIRED GLASS

DOOR AND WINDOW ABBREVIATIONS

ALUM ALUMINUM	FLUSH W/ APPLIED MLDG	NL NARROW LITE	OC OVERHEAD COILING
CL CHAIN LINK	DW DRYWALL	OH OVERHEAD SEGMENTAL	PLAM PLASTIC LAMINATE
F FLUSH	PREFIN PRE-FINISHED	PT PAINT	RAISED PANEL
FG FULL GLASS	FRP FIBERGLASS	SCHB SOLID CORE HARDBOARD	SCR SOLID CORE WOOD
REINFORCED PLASTIC	HCHB HOLLOW CORE HARDBOARD	HCW HOLLOW CORE WOOD	HM HOLLOW METAL
IF INSULATED FIBERGLASS	IM INSULATED METAL	STL STEEL	TR TRAFFIC DOOR (SOLID CORE)
		CLWD CLAD WOOD	WD WOOD

ROOM FINISH SCHEDULE NOTES

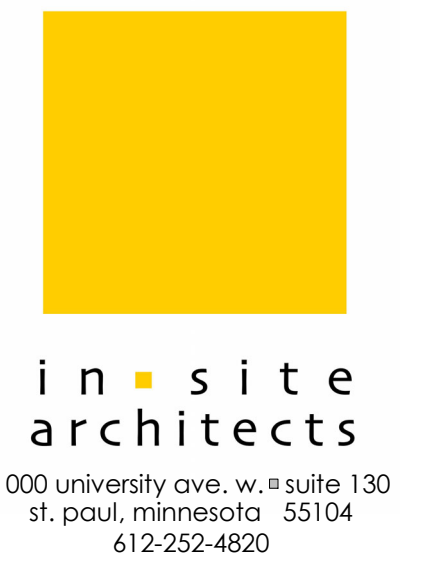
- CROWN MOULDING
- PICTURE RAIL - TOP @ 6" - 0" AFF.
- SEE INTERIOR DESIGNER'S FINISH SCHEDULE FOR LOCATION OF PICTURE & CHAIR RAILS**

ROOM FINISH ABBREVIATIONS

ACT ACOUSTICAL CEILING TILE	INT INTERIOR
AFF ABOVE FINISHED FLOOR	LVT LUXURY VINYL TILE
BD BOARD	MFR MANUFACTURER
CM CULTURED MARBLE	MEMB MEMBRANE
CPT CARPET	MTL METAL
CT CERAMIC TILE	NIC NOT IN CONTRACT
CONC CONCRETE	PAINT PAINT
CMU CONCRETE MASONRY UNIT	PTD PAINTED
DIM DIMENSION	PNL PANEL
DR DOOR	PLAM PLASTIC LAMINATE
EPT EPOXY PAINT	RCP REFLECTED CEILING PLAN
EXIST EXISTING	RM ROOM
FRP FIBER REINFORCED PLASTIC	SCONC SEALED CONCRETE
FIN FINISH	SS SOLID SURFACE
FF FINISH FLOOR	SST STAINLESS STEEL
FFE FURNITURE FIXTURES & EQUIPMENT	STN STONE
GC GENERAL CONTRACTOR	TV TELEVISION
GYP GYPSUM	VB VINYL BASE
HT HEIGHT	WC WALL COVERING
HM HOLLOW METAL	WD WOOD

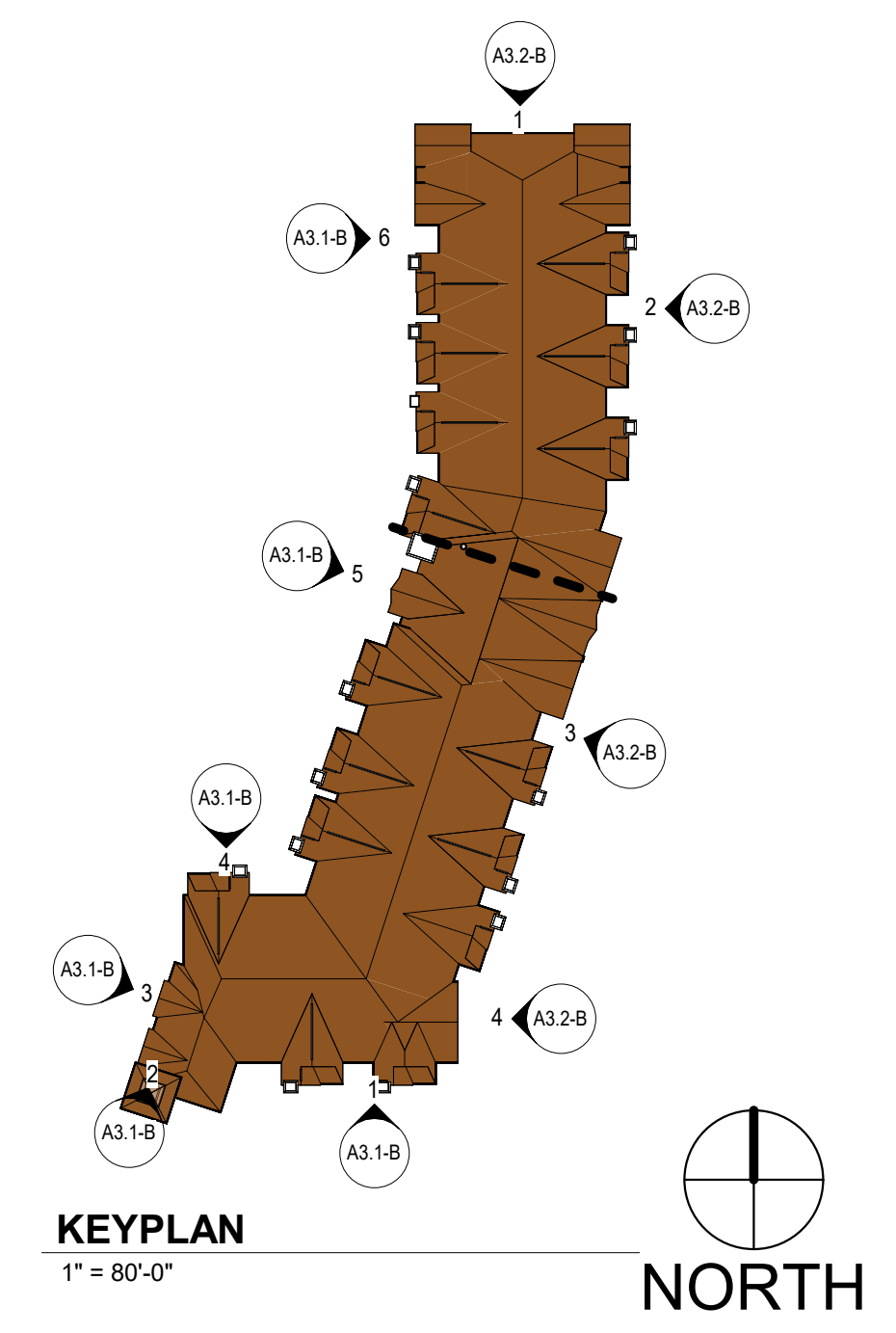
1 LEVEL 2 - EAST - SOUTH
 A1.2-BS 1/8" = 1'-0"

NOTE: COLORS SHOWN ARE TO INDICATE VARIATIONS IN EXTERIOR FINISHES ONLY AND DO NOT INDICATE FINAL COLOR SELECTION AT THIS TIME



I hereby certify that this document was prepared by me or under my direct supervision and that I am a duly licensed architect under the laws of the State of Washington

Dawn Wiczorek
Typed or Printed Name
11192 X
License # Date

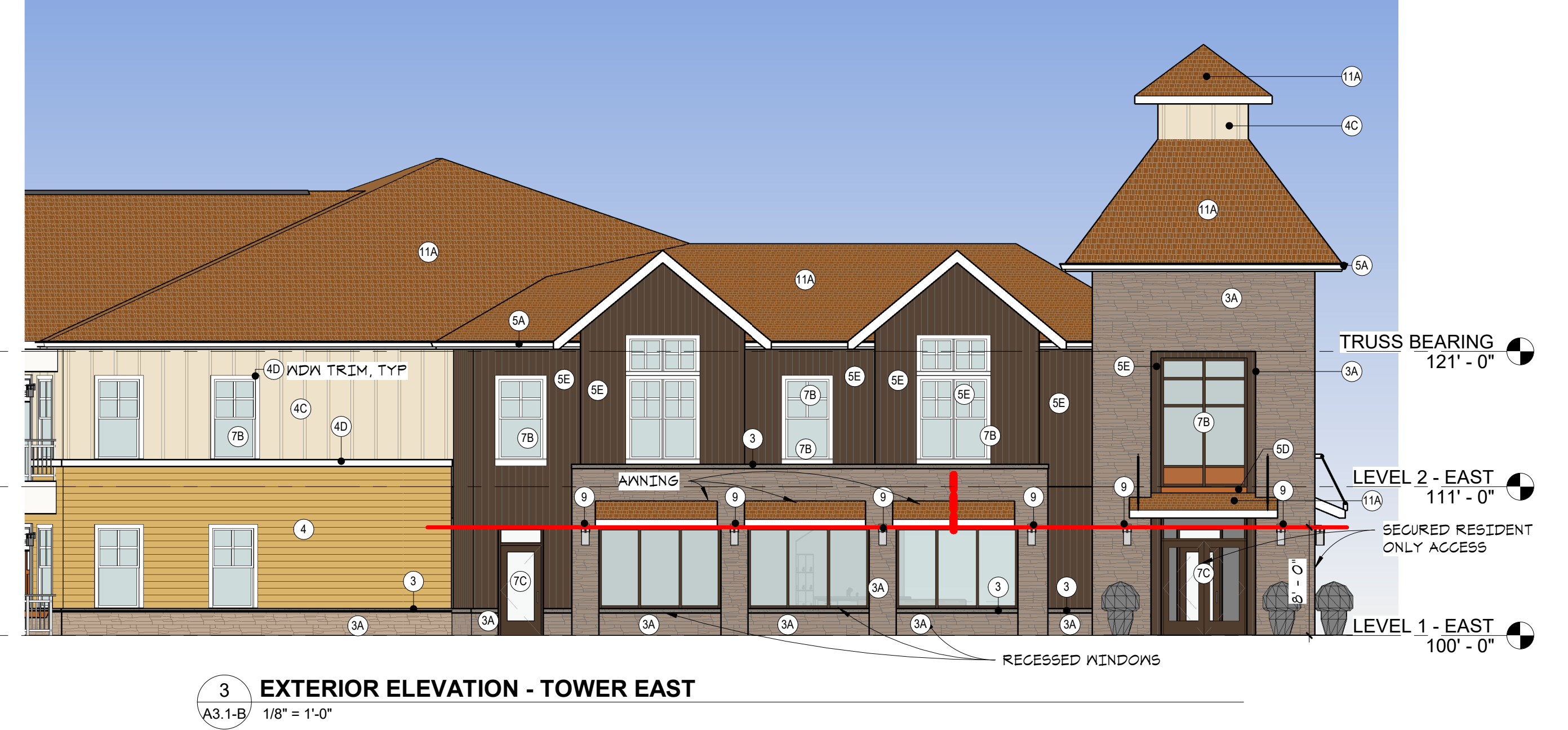
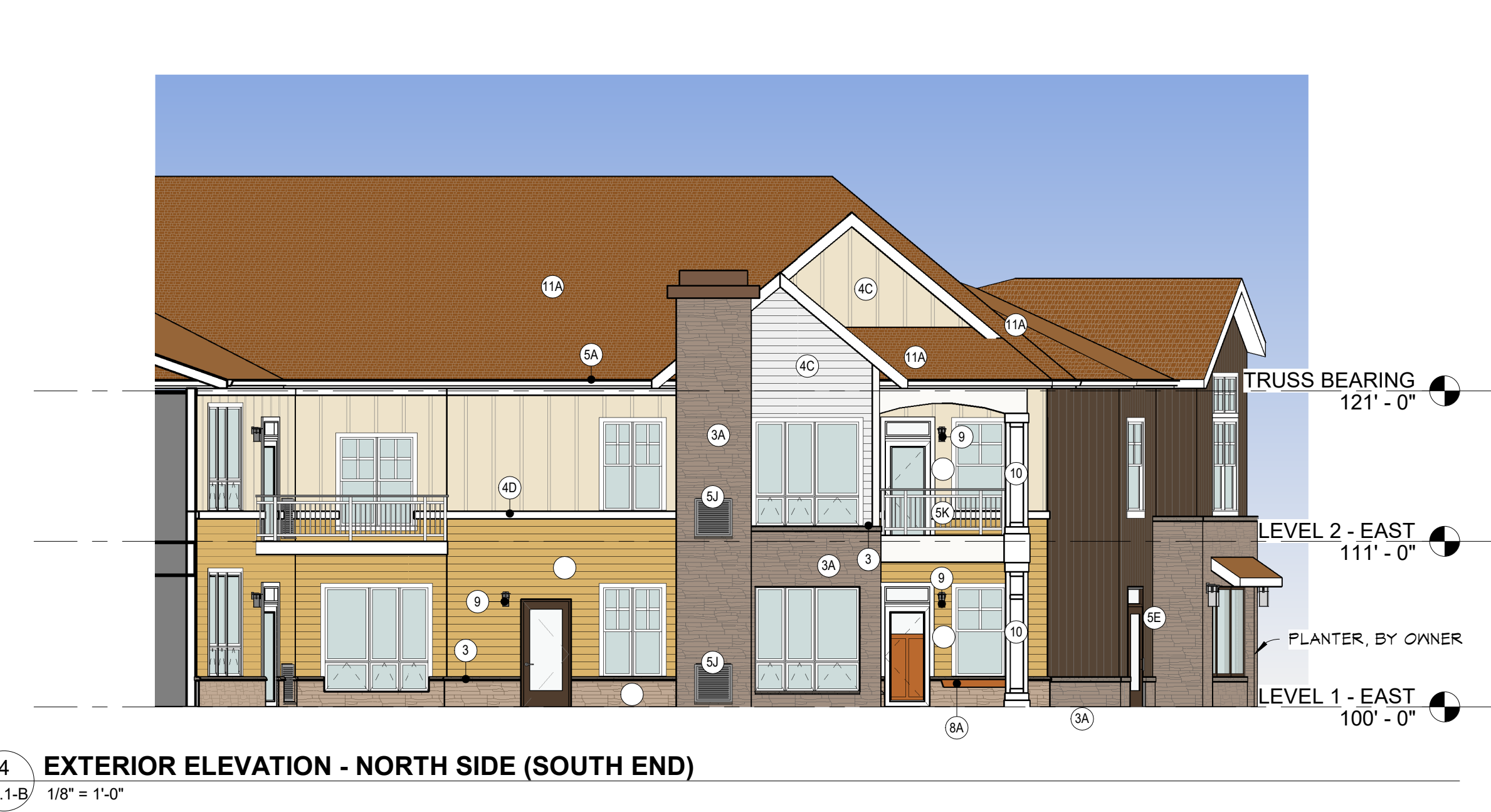


KEYNOTE LEGEND	
Key Value	Keynote Text
2	CIP CONCRETE
3	MANUFACTURED STONE CAP/SILL/WATERTABLE
3A	MANUFACTURED STONE VENEER #1
4	FIBER CEMENT LAP SIDING
4A	FIBER CEMENT SIDING (SWISS PEARL)
4C	FIBER CEMENT PANEL-BOARD & BATTEN
4D	FIBER CEMENT TRIM
5A	PREFIN GUTTER
5D	KYNAR FINISH CUT METAL PANEL
5E	PREFIN CORRUGATED METAL
5J	PREFINISHED LOUVER
5K	ALUMINUM RAILING SYSTEM
7A	VINYL WINDOWS
7B	ALUMINUM STOREFRONT SYSTEM
7C	ALUMINUM ENTRANCE DOOR
8A	WINDOW BOX
9	DECORATIVE WALL-MOUNTED LIGHT FIXTURE
10	FIBER CEMENT WRAPPED COLUMN W/TRIM
11A	ASPHALT SHINGLES

	CORRUGATED METAL (MATCH PHASE 1)
	LAP SIDING - FIBER CEMENT (HARDIE)
	LAP SIDING - FIBER CEMENT (SWISS PEARL)
	METAL PANEL
	BOARD-BATTEN/VERTICAL SIDING - FIBER CEMENT
	MANUFACTURED VENEER STONE

NOTE: ALL WINDOWS EXCEPT IN STONE AREAS RECEIVE 2" MIN TRIM

EXTERIOR FINISH KEY
1/4" = 1'-0"



WESLEY BRADLEY PARK 2
EAST BROWNSTONE
707 39TH AVENUE SE
PUYALLUP, WA 98374

LAND USE & MX-DRO REVIEW
SUBMITTAL #2
1/13/23

ORIGINAL ISSUE:
REVISIONS
No. Description Date

2108
PROJECT NUMBER
JDK Checker
DRAWN BY CHECKED BY
WESLEY BRADLEY PARK 2
EAST BROWNSTONE

EXTERIOR ELEVATIONS -
BROWNSTONE EAST

A3.1-B

1/13/2023 5:16:22 PM

NOTE: COLORS SHOWN ARE TO INDICATE VARIATIONS IN EXTERIOR FINISHES ONLY AND DO NOT INDICATE FINAL COLOR SELECTION AT THIS TIME



I hereby certify that this document was prepared by me or under my direct supervision and that I am a duly licensed architect under the laws of the State of Washington

Dawn Wiczorek
 11192 License #
 X Date

WESLEY BRADLEY PARK 2
EAST BROWNSTONE
 707 39TH AVENUE SE
 PUYALLUP, WA 98374

LAND USE & MX-DRO REVIEW
 SUBMITTAL #2
 1/13/23

ORIGINAL ISSUE:
 REVISIONS
 No. Description Date

2108 PROJECT NUMBER
 Author: _____ Checker: _____
 DRAWN BY: _____ CHECKED BY: _____
 WESLEY BRADLEY PARK 2
 EAST BROWNSTONE

EXTERIOR ELEVATIONS - BROWNSTONE EAST

A3.2-B

MAT'L TAKEOFF_WALLS		TOTAL MATERIAL %
Material Name	Material Area	
Copper-Look Metal Panel	138	METAL: 16.8%
Metal - Corrugated	4,749	
Siding - Board + Batten (Hardie)	3,656	
Siding - Lap Siding (Hardie)	5,399	
Siding - thru body fiber cement (Swiss Pearl)	3,024	
Stone - Ashlar Dry Stack-Natural Color-Warm(1)	12,168	FC (HARDIE): 31%
	29,131	
		FC (SWISS PEARL): 10.4%
		MANUFACTURED STONE: 41.8%

PMC 20.52.025 (2)a = NOT COMPLIANT DUE TO ALLOWED STANDALONE SENIOR HOUSING USE/NO RETAIL

PMC 20.52.025 (2)b = GROUND FLOOR TRANSPARENCY @ STREET:

305'-4" LF @ 39TH AVE (INCLUDES RETURN OF BUILDING AT ENTRY DUE TO MAJOR VISIBLE EXPOSURE FROM THE STREET)
 NOTE: ALL WINDOWS MEET THE 2' SILL AND 6' HEAD REQUIREMENT. THEREFORE CALCULATIONS ARE DONE AS LF IN LIEU OF SF.

WINDOW LF:
 WHIDBEY UNIT 1010: 27'-4"
 WHIDBEY UNIT 1012: 27'-4"
 HERON UNIT 1014: 11'-6"
 GAMEROOM (STOREFRONT W/DWS/DOORS): 54'
 TOTAL: 120'-2" LF (39.4% TRANSPARENCY)

MAT'L TAKEOFF_WALLS		LEVEL 1 MATERIAL %
Material Name	Material Area	
Copper-Look Metal Panel	138	METAL: 14%
Metal - Corrugated	1,633	
Siding - Board + Batten (Hardie)	194	
Siding - Lap Siding (Hardie)	4,326	
Siding - thru body fiber cement (Swiss Pearl)	0	
Stone - Ashlar Dry Stack-Natural Color-Warm(1)	7,625	FC (HARDIE): 32%
	14,114	
		FC (SWISS PEARL): 0%
		MANUFACTURED STONE: 54%

MIN 60% COVERAGE BY HIGH QUALITY (68%) - COMPLIANT PER PMC 25.52.025 (6)

MIN 30% COVERAGE BY 2 MATERIALS - COMPLIANT PER PMC 25.52.025 (6)

MAT'L TAKEOFF_WALLS		LEVEL 2 MATERIAL %
Material Name	Material Area	
Copper-Look Metal Panel	0	METAL: 20%
Metal - Corrugated	2,915	
Siding - Board + Batten (Hardie)	3,462	
Siding - Lap Siding (Hardie)	1,073	
Siding - thru body fiber cement (Swiss Pearl)	3,024	
Stone - Ashlar Dry Stack-Natural Color-Warm(1)	4,843	FC (HARDIE): 30%
	15,017	
		FC (SWISS PEARL): 20%
		MANUFACTURED STONE: 30%

MIN 60% COVERAGE BY HIGH QUALITY (10%) - COMPLIANT PER PMC 25.52.025 (6)

MIN 30% COVERAGE BY 2 MATERIALS - COMPLIANT PER PMC 25.52.025 (6)



5 CAMPUS ENTRY VIEW
 A3.2-B/ NTS

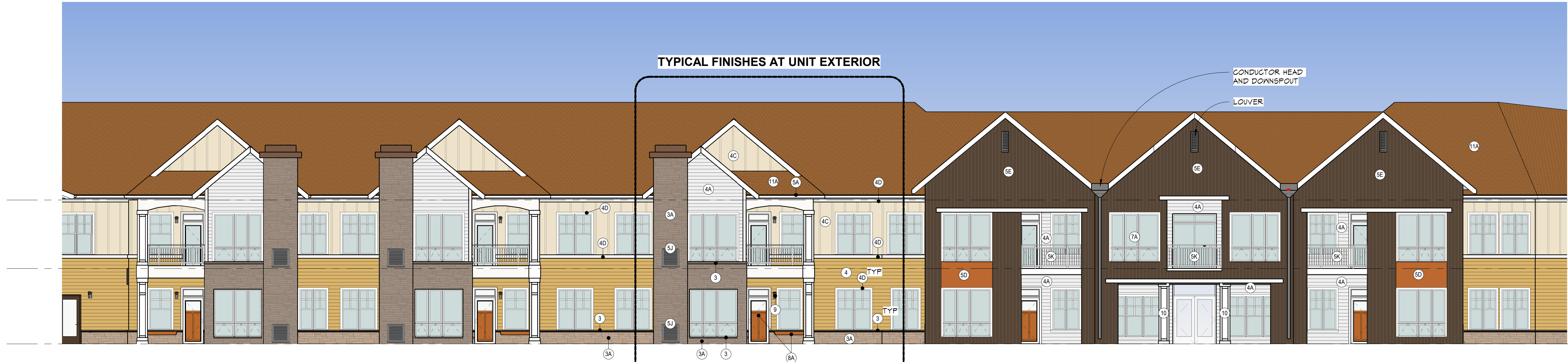


4 EXTERIOR ELEVATION - EAST SIDE (SOUTH END @ GRID 10)
 A3.2-B/ 1/8" = 1'-0"

KEYNOTE LEGEND	
Key Value	Keynote Text
2	CIP CONCRETE
3	MANUFACTURED STONE CAP/SILL/WATERTABLE
3A	MANUFACTURED STONE VENEER #1
4	FIBER CEMENT LAP SIDING
4A	FIBER CEMENT SIDING (SWISS PEARL)
4C	FIBER CEMENT PANEL-BOARD & BATTEN
4D	FIBER CEMENT TRIM
5A	PREFIN GUTTER
5D	KYNAR FINISH CUT METAL PANEL
5E	PREFIN CORRUGATED METAL
5J	PREFINISHED LOUVER
5K	ALUMINUM RAILING SYSTEM
7A	VINYL WINDOWS
7B	ALUMINUM STOREFRONT SYSTEM
7C	ALUMINUM ENTRANCE DOOR
8A	WINDOW BOX
9	DECORATIVE WALL-MOUNTED LIGHT FIXTURE
10	FIBER CEMENT WRAPPED COLUMN W/TRIM
11A	ASPHALT SHINGLES

	CORRUGATED METAL (MATCH PHASE 1)
	LAP SIDING - FIBER CEMENT (HARDIE)
	LAP SIDING - FIBER CEMENT (SWISS PEARL)
	METAL PANEL
	BOARD-BATTEN/VERTICAL SIDING - FIBER CEMENT
	MANUFACTURED VENEER STONE

NOTE: ALL WINDOWS EXCEPT IN STONE AREAS RECEIVE 2" MIN TRIM
EXTERIOR FINISH KEY
 1/4" = 1'-0"



3 EXTERIOR ELEVATION - EAST SIDE (SOUTH END)
 A3.2-B/ 1/8" = 1'-0"



2 EXTERIOR ELEVATION - EAST SIDE (NORTH END)
 A3.2-B/ 1/8" = 1'-0"



1 EXTERIOR ELEVATION - NORTH END
 A3.2-B/ 1/8" = 1'-0"

1/13/2023 5:16:33 PM