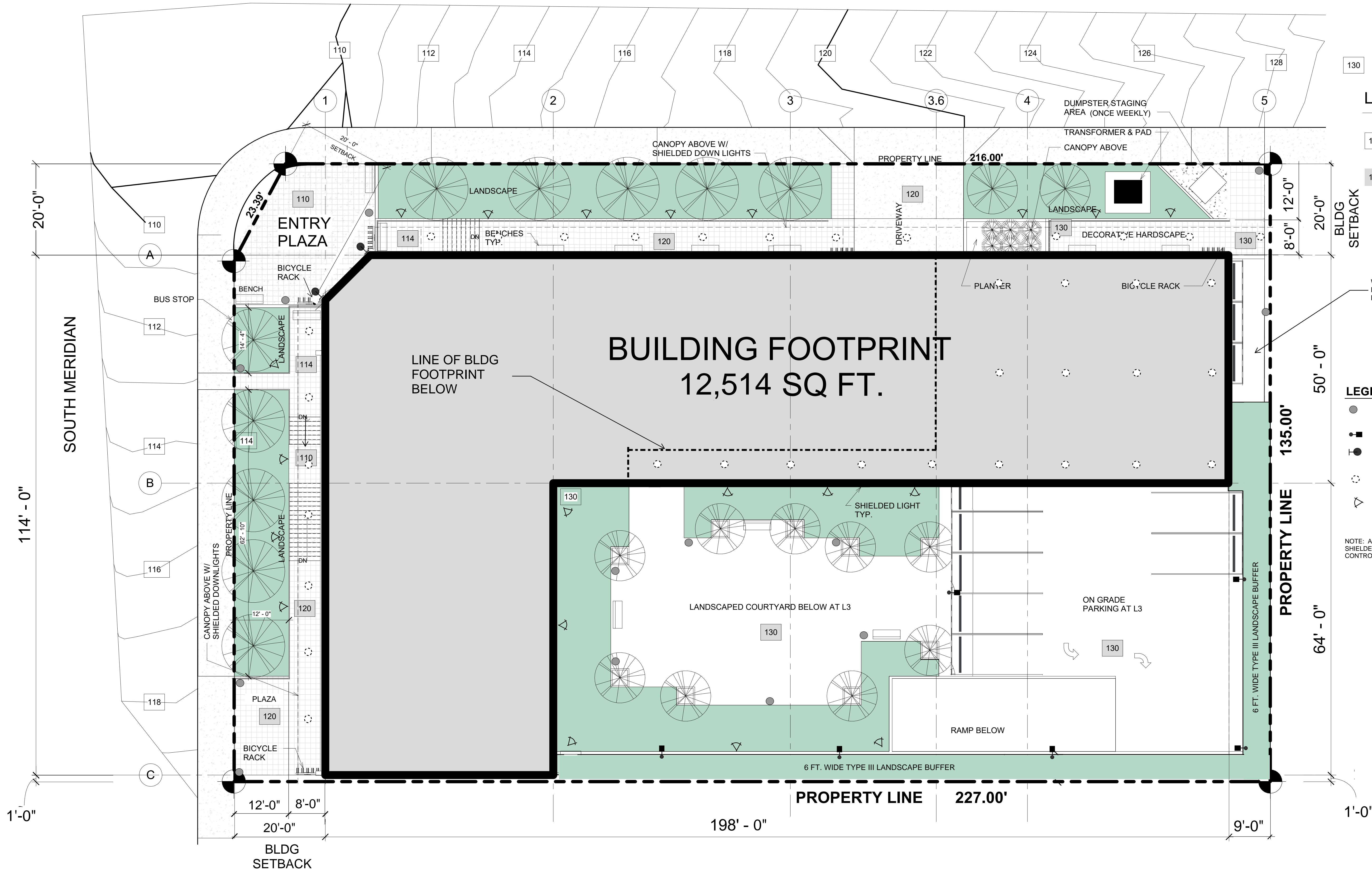


17TH AVE. SE



LEGEND

- 120 EXISTING COUNTOUR ELEVATION
- 120 PROPOSED SPOT ELEVATION

LEGEND

- BOLLARD LIGHTING
- ▮ 12' TALL PARKING LIGHT STANDARD
- WALL SCONCE AT LEVEL ADJACENT TO GRADE
- SURFACE MOUNTED SOFFIT LIGHT
- △ GROUND LEVEL LANDSCAPE LIGHT

NOTE: ALL LIGHT FIXTURES ARE SHIELDED FOR LIGHT POLLUTION CONTROL ONTO ADJACENT PARCELS



21620 84th Ave. S.  
Ste. 200  
Kent, WA 98032  
(253) 468-7696  
www.ihbarchitects.com

The drawings and plans set forth on this set as instrument of service are, and shall remain, the property of IHB Architects. Use of this drawing is limited to a specified project for persons named herein. Any use or reuse of said drawings is strictly prohibited without written permission of IHB Architects.

PUYALLUP MEDICAL OFFICES  
 1617 S. MERIDIAN, PUYALLUP, WA  
 PARCEL NO: 7470023540 / 7470023490

PRELIMINARY SITE  
 LIGHTING PLAN

REVISIONS:

DATE: MAY 28, 2023  
 DRAWN BY: Author  
 REVIEWED BY: IHB

PRELIMINARY SITE LIGHTING PLAN

SCALE: 1" = 10'-0"

