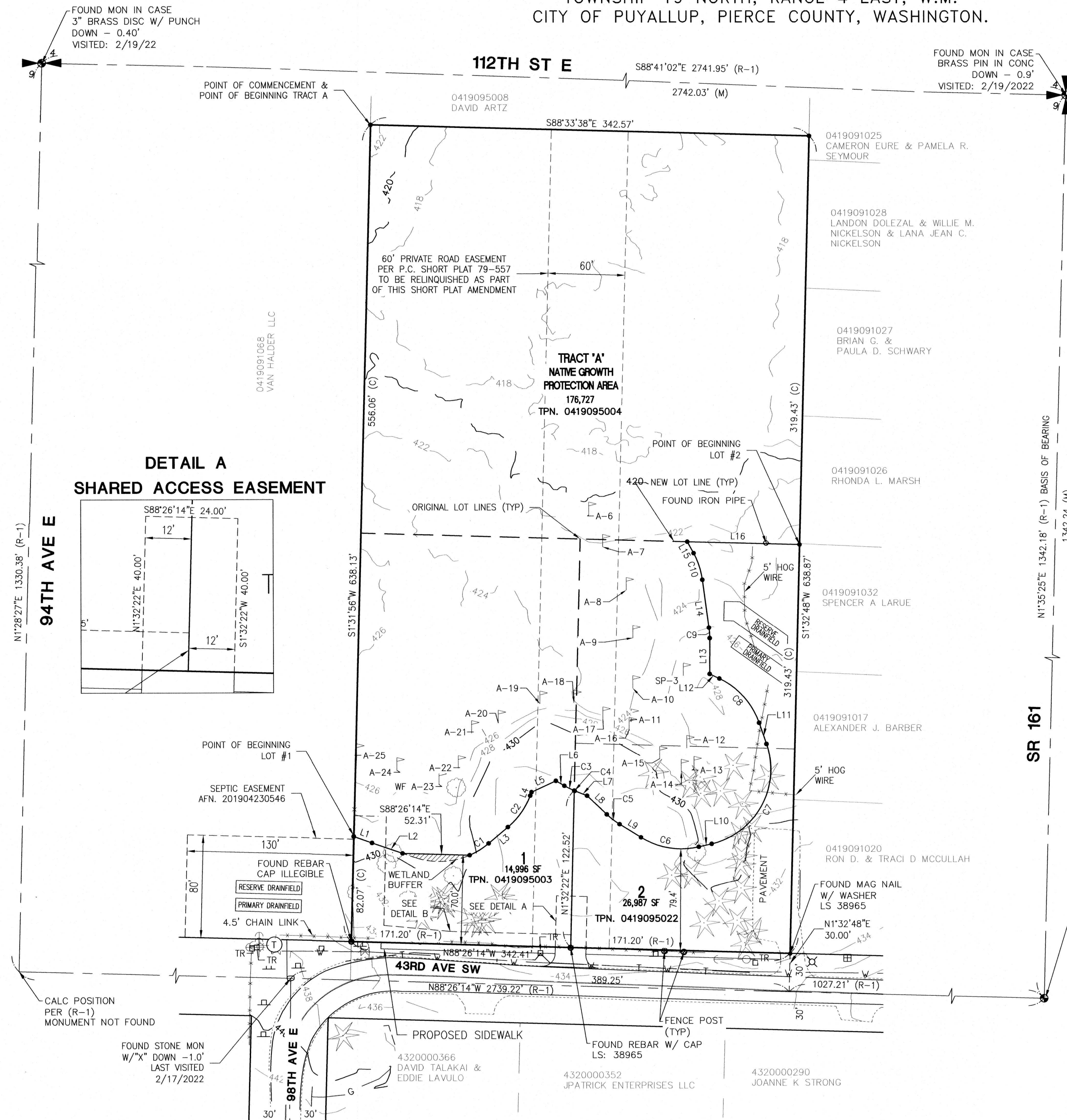
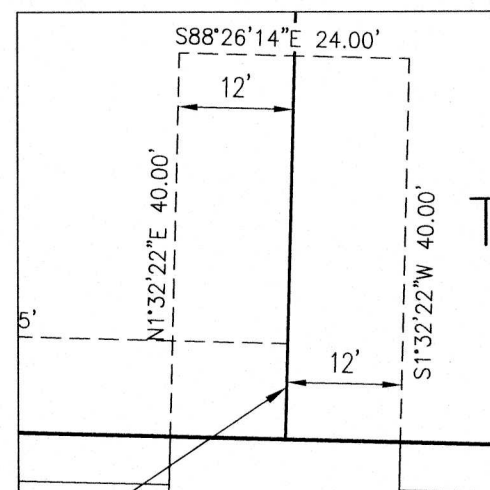


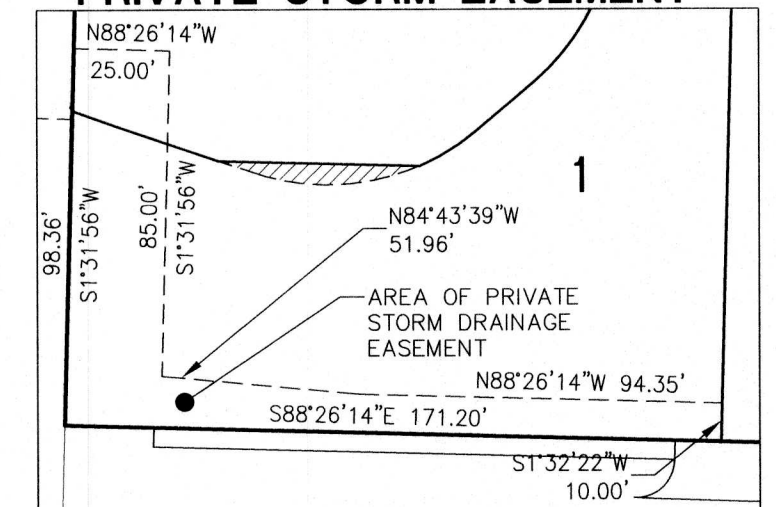
PIERCE COUNTY SHORT PLAT AMENDMENT
A PORTION OF THE NE QUARTER OF THE NE QUARTER, SECTION 9,
TOWNSHIP 19 NORTH, RANGE 4 EAST, W.M.
CITY OF PUYALLUP, PIERCE COUNTY, WASHINGTON.



DETAIL A
SHARED ACCESS EASEMENT

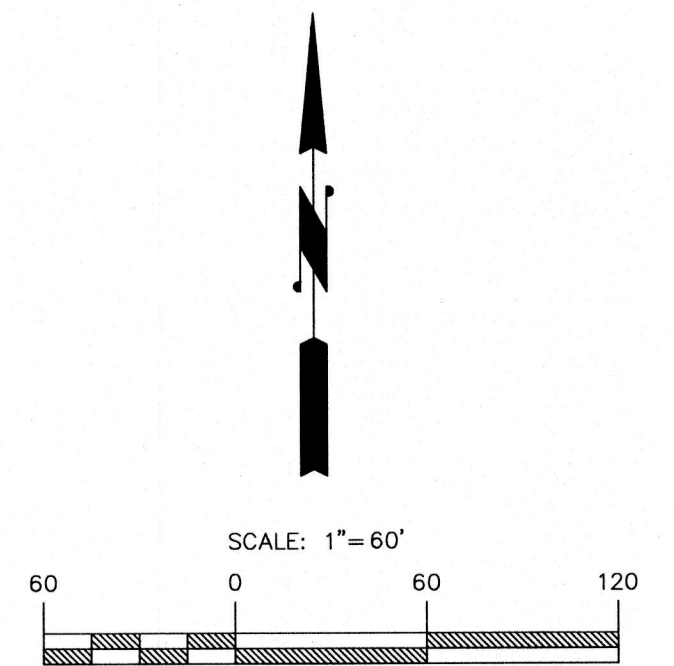


DETAIL B
PRIVATE STORM EASEMENT



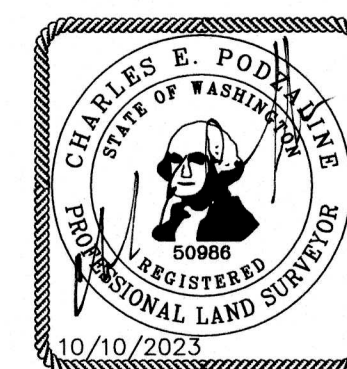
Line Table		
Line #	Length	Direction
L1	15.05	N70°37'29\"W
L2	25.22	N71°13'24\"W
L3	19.72	S49°52'29\"W
L4	2.96	S20°54'27\"W
L5	21.03	N65°18'51\"E
L6	7.61	S59°44'44\"E
L7	10.44	S68°19'55\"E
L8	21.15	S46°23'50\"E
L9	19.65	S58°20'18\"E
L10	10.31	N76°54'46\"E
L11	17.43	N19°01'54\"W
L12	8.40	N64°33'08\"W
L13	27.98	N0°11'44\"E
L14	37.74	S7°39'05\"E
L15	10.25	S28°36'05\"E
L16	87.65	S88°29'56\"E

Curve Table			
Curve #	Length	Radius	Delta
C1	17.59	60.00	16°48'05\"
C2	30.33	60.00	28°58'02\"
C3	8.64	60.00	8°14'45\"
C4	0.36	60.00	0°20'26\"
C5	12.50	60.00	11°56'28\"
C6	46.86	60.00	44°44'56\"
C7	100.47	60.00	95°56'41\"
C8	47.67	60.00	45°31'13\"
C9	8.22	60.00	7°50'49\"
C10	21.94	60.00	20°56'59\"



- LEGEND**
- (C) CALCULATED DIMENSION
 - (M) MEASURED DIMENSION
 - (R-1) RECORD DIMENSION
 - FOUND MON AS NOTED
 - FOUND REBAR/CAP AS NOTED
 - FOUND IRON PIPE AS NOTED
 - FOUND MAG NAIL AS NOTED
 - SET REBAR/CAP LS# 50986
 - DECIDUOUS TREE
 - EVERGREEN TREE
 - TELEPHONE RISER
 - STORM CATCH BASIN
 - POWER LIGHT POLE
 - POWER POLE
 - SIGN
 - WATER METER
 - WATER VALVE
 - FIRE HYDRANT
 - TELEPHONE MANHOLE
 - GUY ANCHOR
 - YARD LIGHT
 - FENCE POST
 - MONITORING WELL
 - WETLAND FLAG
 - POWER PLASTIC PIPE
 - ORIGINAL LOT LINE
 - NEW LOT LINE
 - MINOR CONTOUR
 - MAJOR CONTOUR
 - GAS PAINT LINE
 - WATER PAINT LINE
 - TELEPHONE PAINT LINE
 - FENCE AS NOTED

SHEET 2 OF 2



C.E.S. NW INC.
CIVIL ENGINEERING & SURVEYING
429 - 29TH ST. NE, SUITE D PUYALLUP, WA 98372
Bus: (253) 848-4282
ceservices@cesnwinco.com

JOB: 20069 APPLICATION NO. PLSHP20220104